



# Integrated Pest Control Solutions

County of San Diego, Department of Agriculture, Weights & Measures  
Integrated Pest Control Program  
Providing Safe and Effective Pest management using the least toxic methods  
[ipc.awm@sdcounty.ca.gov](mailto:ipc.awm@sdcounty.ca.gov)



## Mulch for the future: the eco-friendly way to garden!

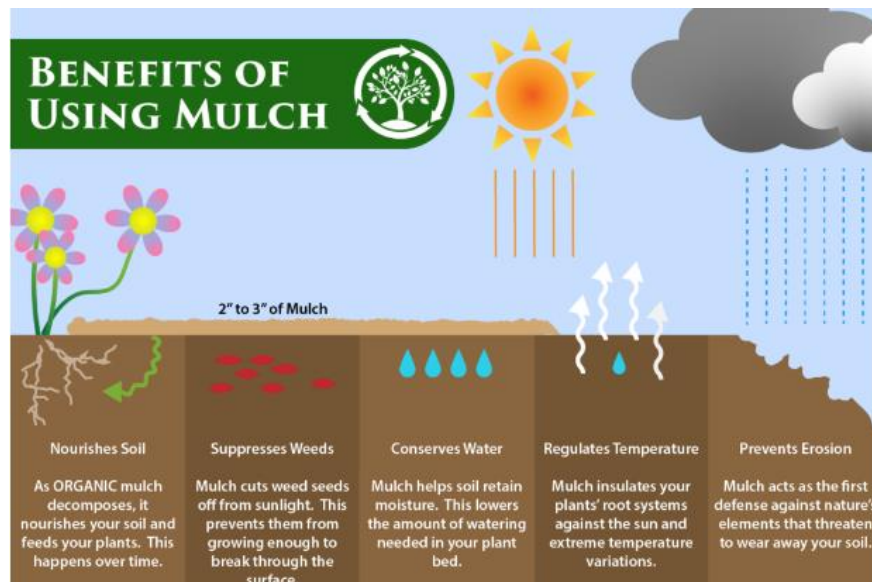
Mulching is one of the simplest and most beneficial practices you can use in your garden or landscape. Mulch is a protective layer of a material that is spread on top of the soil. Mulch benefits include conserving available water, protecting the soil from erosion, and reducing competition by suppressing weeds. Mulches can either be organic such as grass clippings, straw, bark chips, and similar materials, or inorganic such as stones or recycled rubber mulch.



Mulch should be limited to three to four inches deep. A mulch layer greater than three to four inches deep may threaten plant life by reducing the amount of oxygen and water available to the plant.

### Origin of the Word Mulch

It is believed that the word mulch originated from the German word *molsch*, which means soft or decaying. Since natural forms of mulch are designed to perform such a function - it is a fitting title.





# Integrated Pest Control Solutions

County of San Diego, Department of Agriculture, Weights & Measures  
 Integrated Pest Control Program  
 Providing Safe and Effective Pest management using the least toxic methods  
[ipc.awm@sdcounty.ca.gov](mailto:ipc.awm@sdcounty.ca.gov)



Want to learn more about mulch?



[University of California IPM](#)



[City of San Diego Mulch Program](#)

AWM’s Integrated Pest Control (IPC) Program performs several functions within the County of San Diego. IPC contributes to a safe and healthy work environment by providing safe and effective structural pest control at County facilities. IPC also controls weeds along County roads and rights-of-ways, and at County airports, sanitization and flood control conveyances, and parks. This work preserves road visibility and clearance, reduces fire danger, enhances drainage to prevent flooding, and helps protect the region’s biodiversity. We adhere to the Board of Supervisors’ Policy F-45, requiring the use of Integrated Pest Management techniques and an environmentally sound approach to reduce the use of chemical pest control methods.

FY 23/24	Quarter 1		Quarter 2		Quarter 3		Quarter 4	
Type of Pesticide	Quantity	Treatment Description	Quantity	Treatment Description	Quantity	Treatment Description	Quantity	Treatment Description
<b>Herbicides</b>								
	Dry	32 lbs.	1,110					
	Liquid	797 gallons	acres	118 lbs.	421.66			
				278 gallons	acres			
<b>Insecticides</b>								
	Dry	16 lbs.	348	17.7 lbs.	181			
	Liquid	7 gallons	applications	3.9 gallons	applications			
<b>Rodenticide</b>								
	Dry	656 lbs.	637	613.2 lbs.	566			
			stations		stations			
<b>Non-Chemical</b>								
	Traps	2,002	136	1,896	131			
			facilities		facilities			

Table 1. Amount of pesticides applied by IPC per quarter.