



Limited Service Charitable Feeding Operations Registration Guide

Effective January 1, 2019, the California Retail Food Code is amended to include Limited Service Charitable Feeding Operations (LSCFO). A LSCFO is not a food facility but is required to register with the Department of Environmental Health (DEH). Food preparation beyond what is permissible for a LSCFO will require a health permit for a retail food facility.

What is a Limited Service Charitable Feeding Operation?

A LSCFO is a non-profit organization that provides food to a consumer solely for the purpose of providing charity. These operations typically consist of food pantries and faith based organizations.

Registration Requirements for Limited Service Charitable Feeding Operations

LSCFO that store and distribute only 100% pre-packaged non-perishable foods are **exempted** from registration requirements. **Category 1**

LSCFO that store and distribute only 100% pre-packaged foods that are either non-perishable and/or perishable are **not** required to register with DEH if the operation is a partner agency of a permitted Food Bank.

LSCFO that store and distribute only 100% pre-packaged foods that are either non-perishable and/or perishable and are not a partner agency with a Food Bank **are** required to register with DEH. **Category 2**

LSCFO that handle unpackaged foods limited to the following: heating, portioning, assembly of a small volume of commercially prepared foods/ingredients, or re-heating and/or portioning of commercially prepared foods with no further processing to hot-hold for same day service **are** required to register with DEH. **Categories 3 4**

Charitable organizations that conduct full food preparation do not qualify for registration as a LSCFO and must obtain a health permit for a food facility.

How to Register with DEH

A representative of a LSCFO may register in person during the hours of 8:00 am - 4:30 pm Monday - Friday at the Department of Environmental Health headquarters located at:

5500 Overland Ave, Suite 170, San Diego, CA 92123.

Proof of a current non-profit charitable organization status must be provided at the time of application submittal. The application can be found at: <https://www.sandiegocounty.gov/content/dam/sdc/deh/fhd/food/lscfo/registration.pdf>

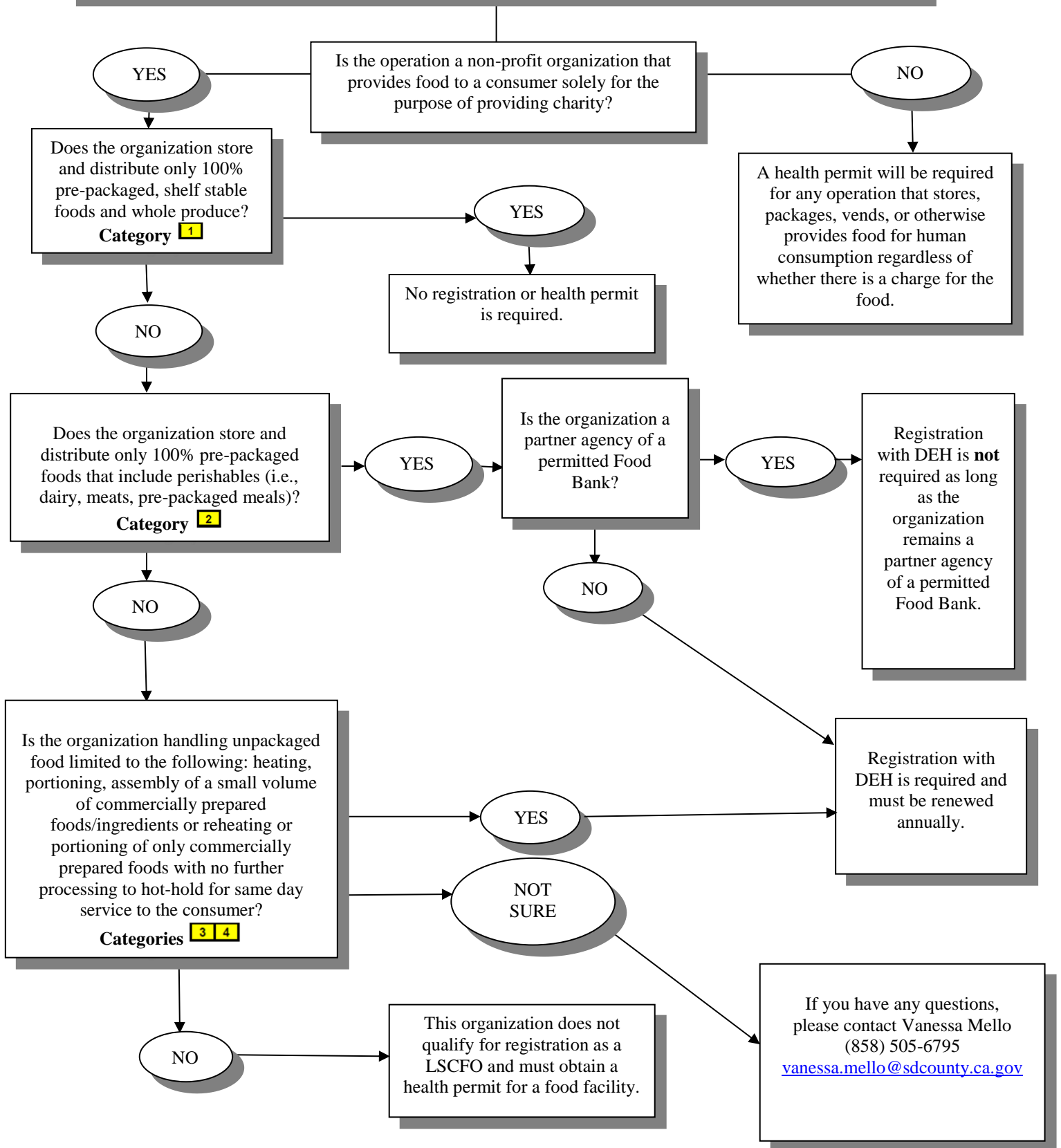
Any questions, please contact us at (858) 505-6803 or DEHFoodSafety@sdcounty.ca.gov.

For more information, please visit: <https://www.sandiegocounty.gov/content/sdc/deh/fhd/food/charitablefeedings.html>

LSCFO Category Legend:

- 1 = Storage and distribution of whole, uncut produce or pre-packaged, non PHFs in their original manufacturer's packaging (grocery only, no perishable foods)
- 2 = Storage or distribution of commercially prepared and commercially packaged potentially hazardous cold or frozen foods (grocery only, including perishable foods)
- 3 = Reheat or portion commercially prepared foods with no further processing
- 4 = Heat, portion, or assemble a small volume of commercially prepared foods or ingredients that are not prepackaged

Limited Service Charitable Feeding Operations (LSCFO)



LSCFO Category Legend:

- 1 = Storage and distribution of whole, uncut produce or pre-packaged, non PHFs in their original manufacturer's packaging (grocery only, no perishable foods)
- 2 = Storage or distribution of commercially prepared and commercially packaged potentially hazardous cold or frozen foods (grocery only, including perishable foods)
- 3 = Reheat or portion commercially prepared foods with no further processing
- 4 = Heat, portion, or assemble a small volume of commercially prepared foods or ingredients that are not prepackaged