

BMS San Diego

2024 San Diego County Dept of Environment EPIC+

Industry Perspective

June 2024

Paul Ryan, Director, EHSS Business Partner R&D CA



Bristol Myers Squibb is a global biopharma company committed to harnessing the power of science to address some of the world's most challenging diseases.

Building a better future

Our day begins...

With a sense of urgency.

Our patients need us.

Our communities need us.

The planet needs us.

Our recent progress in advancing patient access, expanding the boundaries of science, and fostering an inclusive global workplace reinforces our commitment to building a better future for all.

Agenda

Topics covered:

- Background - Bristol Myers Squibb
- San Diego Sites
- EPIC+ Program Benefits!!
- Inspection Preparations
 - Site Preparations
 - Documentation
- Lessons Learned



BMS San Diego

- Center for discovery and early development of both small molecule drugs & biologics for cancer and immunologic diseases with research focused on protein homeostasis, epigenetics and immune-oncology as potential targets for innovative therapies. Leader in protein degradation technology.



10300 Campus Point Drive

- West half of building
- 71K sf lab, 49K sf office
- Medicinal Chemistry, Cancer Biology, DMPK, IT and Administrative functions



3033 Science Park Rd

- 1st and 3rd floors
- 7K sf lab, 31K sf office
- Neuroscience
- Capital Projects Team



4242 Campus Point Ct

- 3rd and 7th floors
- 10K sf lab, 11K sf office
- Houses Biotherapeutics, and IT



4224 Campus Point Ct

- 205 Suite
- ~7K sf lab, ~3K sf office
- Biotherapeutics

BMS San Diego Future Site



- Scheduled to move in early 2026 the Alexandria Real Estate / Bristol Myers Squibb Future Site will be a 5 story 425,000 RSF building / ~175,000 SF Laboratory
- Sustainability is a core value for Bristol Myers Squibb
 - Designed water and energy savings from hybrid CUP
 - Intent is LEED Gold minimum

Benefits: EPIC+ Industry Perspective - Why bother???

- Tangible benefits:
 - Financial
 - 25% off SD County Fees can add up depending on # Permit fees at a site
 - Time
 - Inspection frequency for Hazardous Materials is every three years instead of annually! (Medical Waste Inspections still annually by statute)
 - Enhanced reputation
 - By voluntarily participating in the EPIC+ program, it helps build trust between the company and the CUPA
- Less Tangible Benefits:
 - Increased recognition by Sr. Management within your organization!
 - Raise awareness with employees as to the importance of proper hazardous materials and hazardous waste management
 - Proactive Risk Management - find and address issues before becoming a problem
 - Contribute to overall Sustainability and Environmental Stewardship goals by proactively seeking additional training and adopt practices beyond regulatory compliance - demonstrating commitment!

How to be Inspection Ready?

Align internal resources & assign responsibilities:

- Senior Management
- Scientists
- Lab Services Team
- Facilities
- EHS
- Vendors/Contractors

Set the tone / provide resources

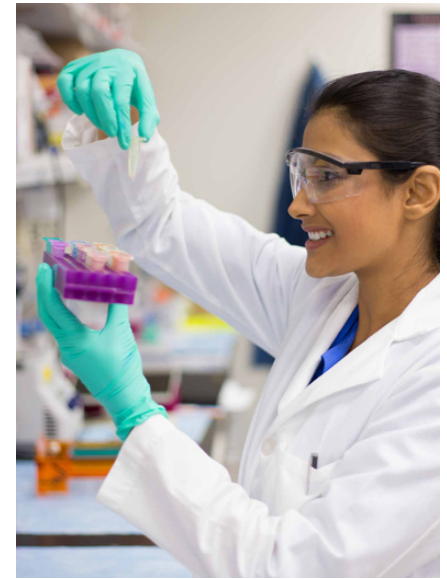
Take responsibility - proper waste management

Eyes and ears - support initiatives

Manage waste from building operations

Write SOPs, provide training, & documentation

Waste consolidation, transportation, and disposal



Inspection Ready

- Communicate, Emphasis and Repeat the Basics:
 - Housekeeping
 - Hazard Communication Labeling
 - Waste Management
 - Emergency Equipment



Inspection Ready

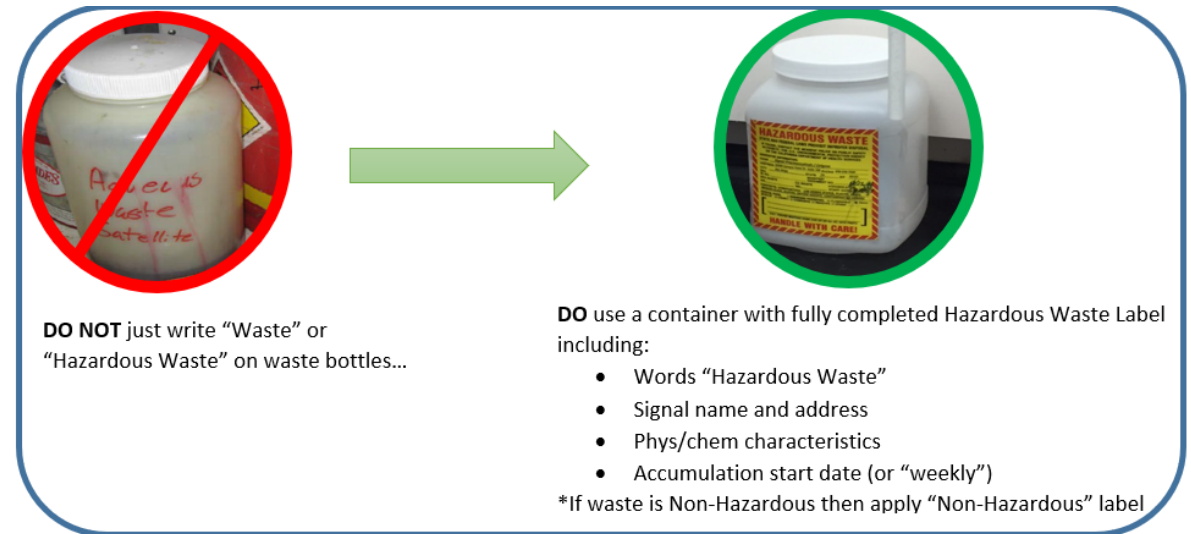
- Communicate, Emphasis and Repeat the Basics:

– Housekeeping

– Hazard Communication Labeling

– Waste Management

– Emergency Equipment



DO NOT just write “Waste” or “Hazardous Waste” on waste bottles...

DO use a container with fully completed Hazardous Waste Label including:

- Words “Hazardous Waste”
- Signal name and address
- Phys/chem characteristics
- Accumulation start date (or “weekly”)

*If waste is Non-Hazardous then apply “Non-Hazardous” label

SD County Dept. of Env. Health Hazardous Materials/Waste
Inspection Guide

Inspection Ready

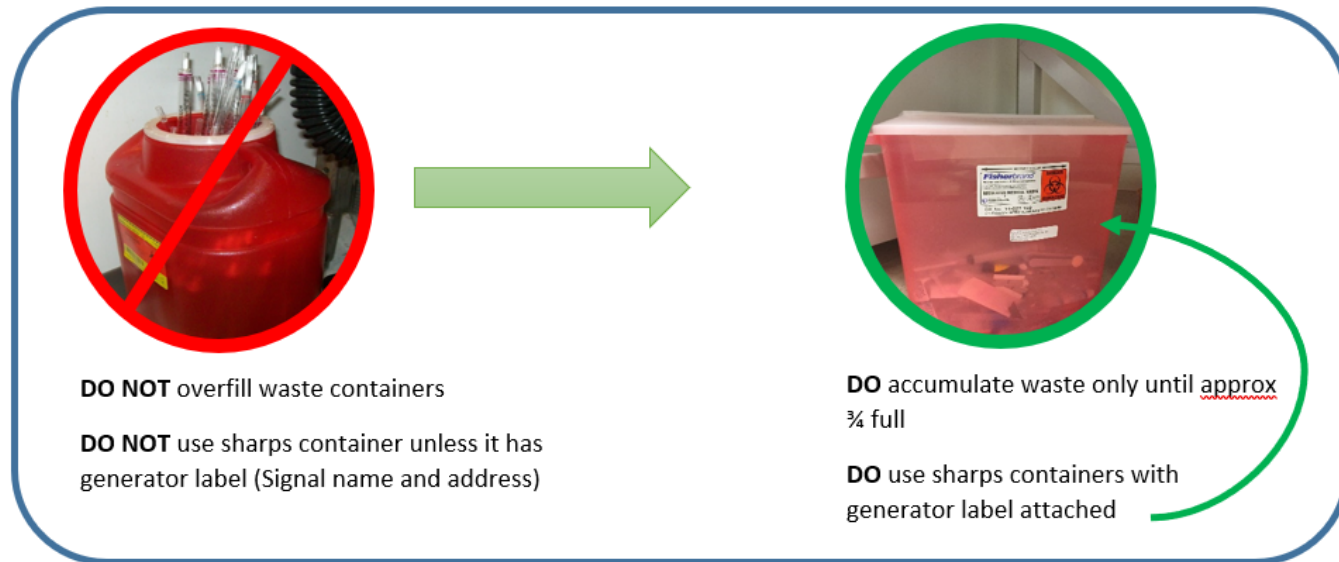
- Communicate / Emphasis and Repeat the Basics:

– Housekeeping

– Hazard Communication Labeling

– Waste Management

– Emergency Equipment

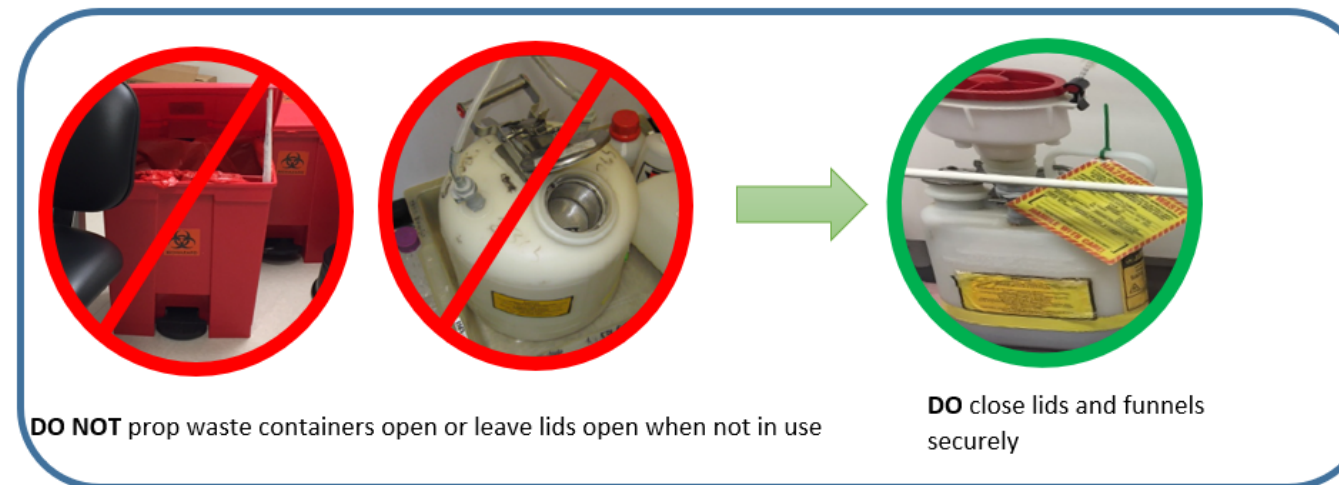


DO NOT overfill waste containers

DO NOT use sharps container unless it has generator label (Signal name and address)

DO accumulate waste only until approx $\frac{3}{4}$ full

DO use sharps containers with generator label attached



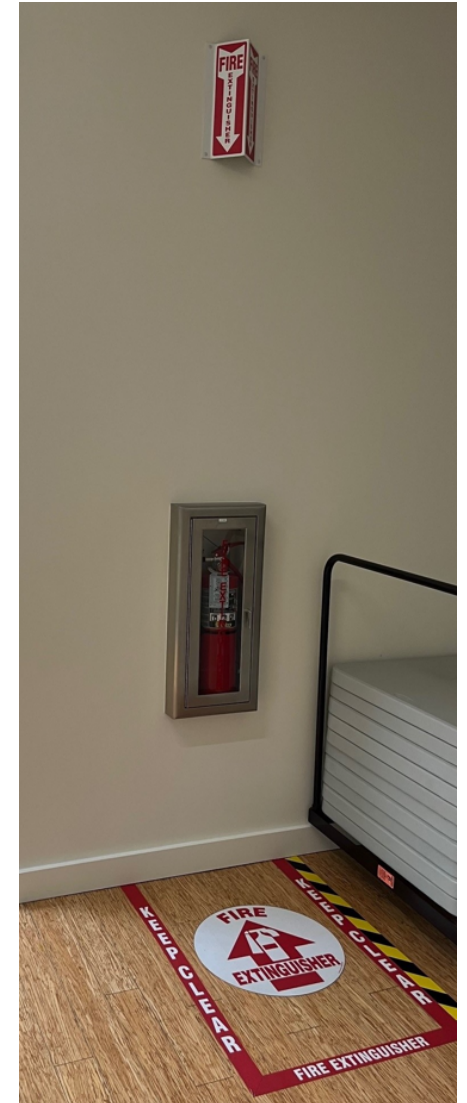
DO NOT prop waste containers open or leave lids open when not in use

DO close lids and funnels securely

SD County Dept. of Env. Health Hazardous Materials/Waste
Inspection Guide

Inspection Ready

- Communicate / Emphasis and Repeat the Basics:
 - Housekeeping
 - Hazard Communication Labeling
 - Waste Management
 - **Emergency Equipment**



Inspection Ready

- Documentation:
 - Hazardous Materials Business Plan (HMBP)
 - Medical Waste Management Plan
 - Waste Profiles and Manifests: Hazardous and Medical
 - Spill Prevention, Control & Countermeasure Plan (SPCC)



County of San Diego
DEPARTMENT OF ENVIRONMENTAL HEALTH AND QUALITY
HAZARDOUS MATERIALS DIVISION
P.O. BOX 129261, SAN DIEGO, CA 92112-9261
Phone: (858) 505-6700 or (800) 253-9933 Fax: (858) 505-6786
www.sdcdeh.org



HAZARDOUS MATERIALS BUSINESS PLAN



County of San Diego
DEPARTMENT OF ENVIRONMENTAL HEALTH & QUALITY
HAZARDOUS MATERIALS DIVISION
P.O. BOX 129261, SAN DIEGO, CA 92112-9261
(858) 505-6880 FAX (858) 505-6848
<http://www.sdcdeh.org>



Medical Waste Management Plan

RCRA Subtitle C Reporting Instructions and Forms

EPA Forms 8700-12, 8700-13 A/B, 8700-23



What are the SPCC criteria?

- Facilities that store > 1,320 gallons of oil

Training Records

Learning management software can be helpful to store, document, and track employee training records:

ComplianceWire, SuccessFactors, Qmetis, Veeva,

EMS Management System Software:

**Regulatory Management
Compliance Reminders**

Regular Site Inspections

Incident Management

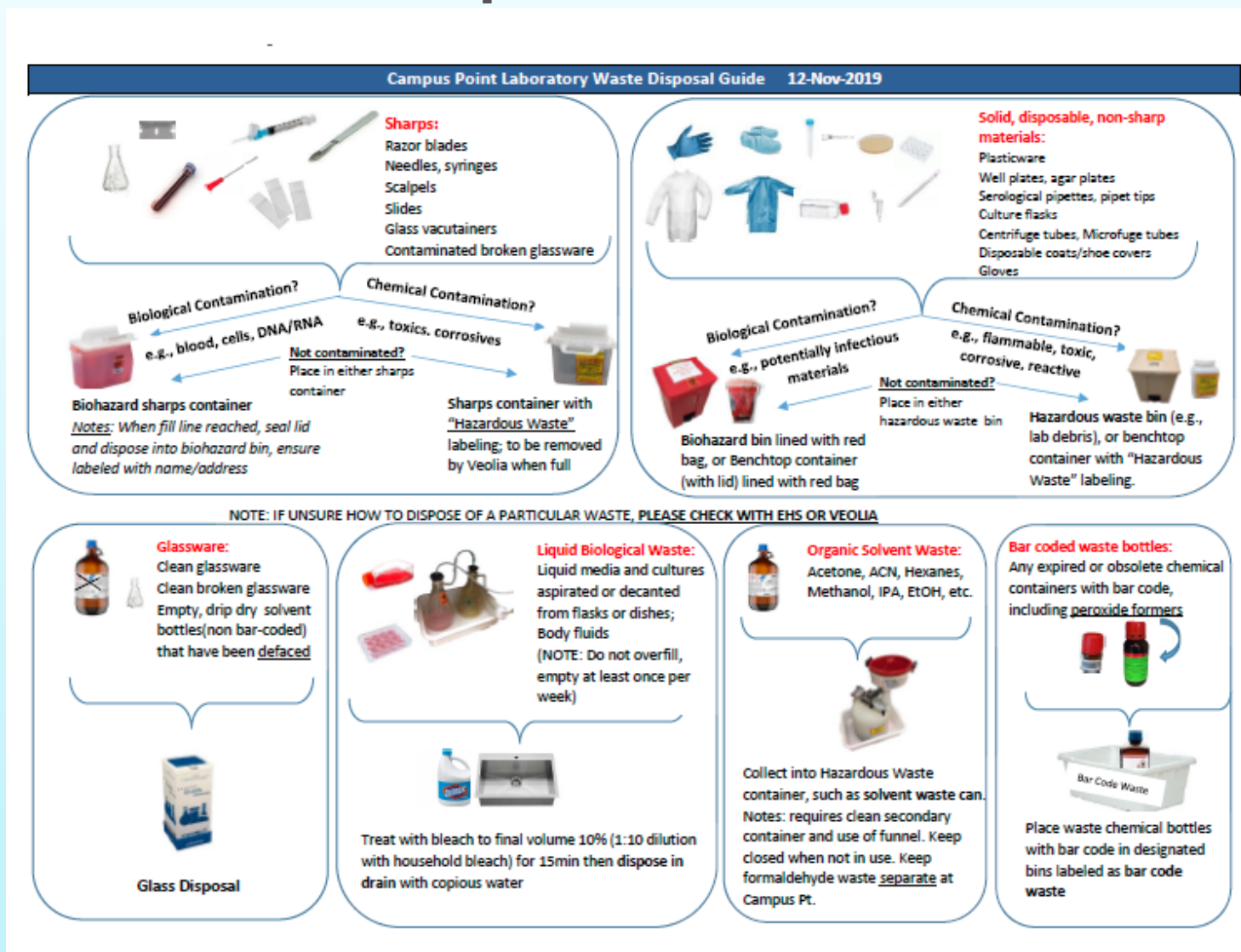
Corporate Audits

Some Examples include:

- EHS Insight
- CloudApper Safety
- Intelex
- Wolters Kluwer (Enablon)
- Ideagen
- SiteDocs
- Intellect
- HIS Donesafe
- VelocityEHS

Lessons Learned: Provide Waste Disposal Guidance

Train on Waste Disposal Procedures and create guidance documents



Lessons Learned:

Change Management

Be sure to review & update your Hazardous Materials Business Plan if changes to:

Key personnel
Hazardous materials
Hazardous waste generation
Site Operations

- Remember to go back to the California Environmental Reporting System to make the changes:
- <https://cersbusiness.calepa.ca.gov/Account/SignIn?ReturnUrl=%2f>

Thank you

Paul.ryan@bms.com