

## MILITARY OPERATIONS AT AGUA CALIENTE SPRINGS, JACUMBA, AND OCOTILLO

### FOR FLIGHT CREWS

After receiving approval to conduct operations at Agua Caliente, Jacumba, or Ocotillo, please ensure each flight crew reviews the particulars for the applicable airport which are contained in this document. In addition, each crew should be aware of and adhere to the following:

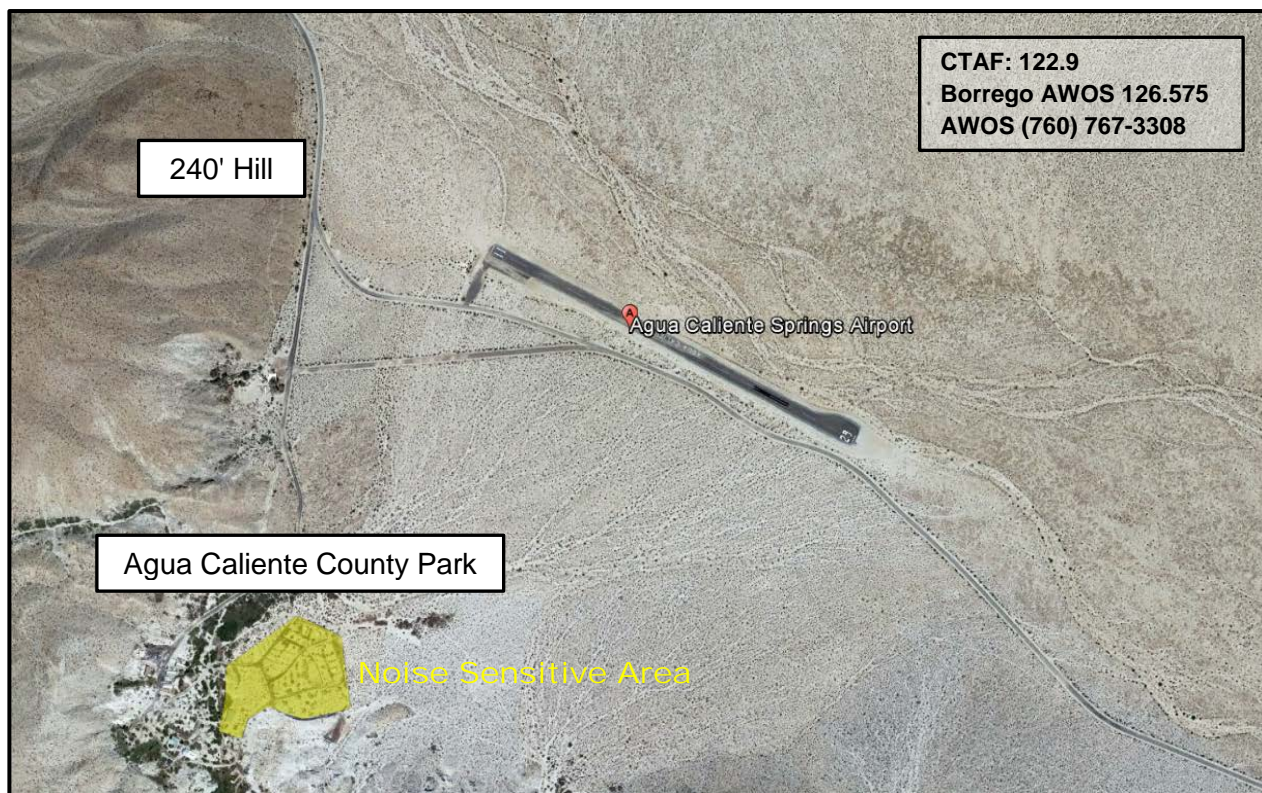
- All of these airports runway(s) are closed sunset to sunrise, as they are unlit
- Skid/run-on landings and departures are prohibited on all runways and taxiways
- Comply with recommended noise abatement and dust recommendations
- Check airport NOTAMs prior to departing for a particular airport at [FAA NOTAMs](#)
- Check temporary flight restrictions when applicable at [FAA TFRs](#)
- Review Airport Facility Directory at FAA Chart Supplements, [L54](#) [L78](#) [L90](#)
- Monitor and broadcast operations on the CTAF 122.9 (if able) for traffic in the vicinity
- Report any of the following to Airport Administration; M-F, 8 AM to 5 PM at (619) 956-4800, other times (888) 802-2244.
  - Any deteriorating field condition(s)
  - Any incidents/accidents/disabled aircraft, which may trigger the issuance of a NOTAM(s)
  - Any fuel or oil spill
- Ground crews/vehicles are not authorized without prior approval
- When authorized, ground crews are responsible for debris/trash created

**For general questions and information contact airport administration at (619) 956-4800 or via e-mail at [airports@sdcounty.ca.gov](mailto:airports@sdcounty.ca.gov)**

## AGUA CALIENTE AIRPORT- L54

Agua Caliente is a public use airport owned and operated by the County of San Diego. The airport is unattended and is managed by Gillespie Field Airport staff in El Cajon. Runway 11/29 is open sunrise to sunset and is closed sunset to sunrise per California regulations due to that it is unlit. Wind permitting, use of Rwy 29 for landing and Rwy 11 for departure is recommended due to 460' hill 1/2 mile west of airport. Aircraft shall self-announce on the CTAF (122.9) prior to landing or departing. Pilots should be alert for occasional wildlife on or in the vicinity of the airport. PPR is required for all military aircraft and rotorcraft skid/run-on landings and departures are prohibited.

There is a County Park containing hot spring pools and camping sites located just south of the airport. The park has quiet hours from 10 PM to 8 AM. The Park Rangers request the military to avoid overflights over the area during these hours whenever possible.



## JACUMBA AIRPORT- L78

Jacumba is a public use airport owned and operated by the County of San Diego. The airport is unattended and is managed by Gillespie Field Airport staff in El Cajon. Runway 07/25 is open sunrise to sunset and is closed sunset to sunrise per California regulations due to that it is unlit.

Wind permitting it is recommended to land RWY 07 and depart RWY 25 due to a 480' hill 1 mile east of the airport. Pilots should be alert for occasional wildlife on or in the vicinity of the airport. There is frequent glider activity during weekends, launching from the field and operating on and in the vicinity of the airport from the surface up to 18,000' MSL. There is also a contiguous ADIZ along the international border located approximately 650' south of RWY 07/25. Aircraft shall self-announce on the CTAF (122.9) prior to landing or departing. PPR is required for all military aircraft and rotorcraft, skid/run-on landings and departures are prohibited.

There is a small community located ½ mile west of the airport, for noise abatement please avoid overflight.



## OCOTILLO AIRPORT- L90

Ocotillo Airport is a public use airport owned and operated by the County of San Diego. The airport is unattended and is managed by Gillespie Field Airport staff in El Cajon. The airport is situated on a dry lake bed and subject to flooding which renders the field unusable when wet.

Both runways are open sunrise to sunset and are closed sunset to sunrise per California regulations due to that they are unlit. Aircraft shall self-announce on the CTAF (122.9) prior to landing or departing. PPR is required for all military aircraft.

Pilots should be alert for:

- Occasional wildlife on or in the vicinity of the airport
- Unauthorized off-road (OHV) vehicles
- High speed military tilt rotor and ultralight operations on and in vicinity of the field

The helicopter and tilt-rotor practice area is located on the NW side of the field and is highlighted in red. Helicopters and tilt-rotor aircraft should not use the runways; this is to protect them from skid and tire imprints which pose a significant risk to light general aviation aircraft. Pilots should also be alert for ultralights operating on or in the vicinity and from the field.

Located just south of the airport and across HWY 78 there is a small community. For noise abatement please avoid overflight of this community which is highlighted in yellow and cease rotorcraft operations when the wind is out of the north to prevent dust and sand from being blown into the community.

