

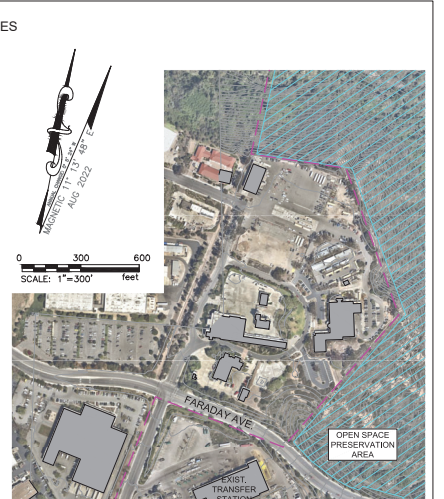
LEGEND		
DESCRIPTION	EXIST.	FUTURE
AIRPORT PROPERTY LINE (PL)	---	NO CHANGE
AIRPORT REFERENCE POINT (ARP)	NOT SHOWN	NO CHANGE
BUILDING RESTRICTION LINE (BRL)	---	NO CHANGE
RUNWAY OBSTACLE FREE AREA (ROFA)	---	---
RUNWAY OBSTACLE FREE ZONE (ROFZ)	---	---
RUNWAY SAFETY AREA (RSA)	---	---
APPROACH RUNWAY PROTECTION ZONE (RPZ)	---	---
DEPARTURE RUNWAY PROTECTION ZONE (RPZ)	---	---
APPROACH SURFACES	---	---
TAXIWAY OBJECT FREE AREA (TOFA)	---	---
TAXIWAY SAFETY AREA (TSA)	---	---
NAVAID CRITICAL AREA	---	---
PRECISION OBSTACLE FREE ZONE (POFZ)	---	---
RUNWAY THRESHOLD LIGHTS	---	---
DISPLACED THRESHOLD LIGHTS	---	---
RUNWAY END INDICATOR LIGHTS (REIL)	---	---
SEGMENTED CIRCLE	---	---
VEHICLE SERVICE ROAD	---	---
ENGINEERED MATERIAL ARRESTING SYSTEM (EMAS)	N/A	---
OPEN SPACE PRESERVATION AREA	---	---
MALS LIGHTS	---	---
PRECISION APPROACH PATH INDICATOR (PAPI)	---	---
RUNWAY PAVEMENT	---	---
TAXIWAY PAVEMENT	---	---
AIRCRAFT PARKING DEVELOPMENT	N/A	---
BUILDINGS	---	---
AIRPORT PROPERTY FENCE	---	---
AVIATION EASEMENT	---	---

FACILITY LEGEND		
ID	DESCRIPTION	NOTES
1	EXIST. ATC TOWER BUILDING/BEACON	
2	FUTURE SEGMENTED CIR./WIND CONE/ASOS	
3	EXIST. GLIDE SLOPE ANTENNA	
4	EXIST. LOCALIZER	
5	EXIST. ADMINISTRATION BUILDING	
6	EXIST. AIRPORT MAINTENANCE BUILDING	
7	EXIST. TERMINAL	
8	EXIST. AIRLINE APRON	
9	EXIST. AUTO PARKING	
10	EXIST. WEST APRON	
11	EXIST. NORTH APRON	TO BE REMOVED
12	EXIST. EAST TRANSIENT APRON	
13	EXIST. HELIPAD PARKING	
14	EXIST. ARFF BUILDING	TO BE REMOVED
15	FUTURE ARFF BUILDING	
16	EXIST. HELIPAD	
17	EXIST. JET BLAST FENCE	
18	FUTURE WINDING VAULT	
19	EXIST. BUILDING #2002	
20	EXIST. BUILDING #2010	
21	EXIST. BUILDING #2012	
22	EXIST. BUILDING #2014	
23	EXIST. BUILDING #2018	
24	EXIST. BUILDING #2008	
25	EXIST. BUILDING #2008	

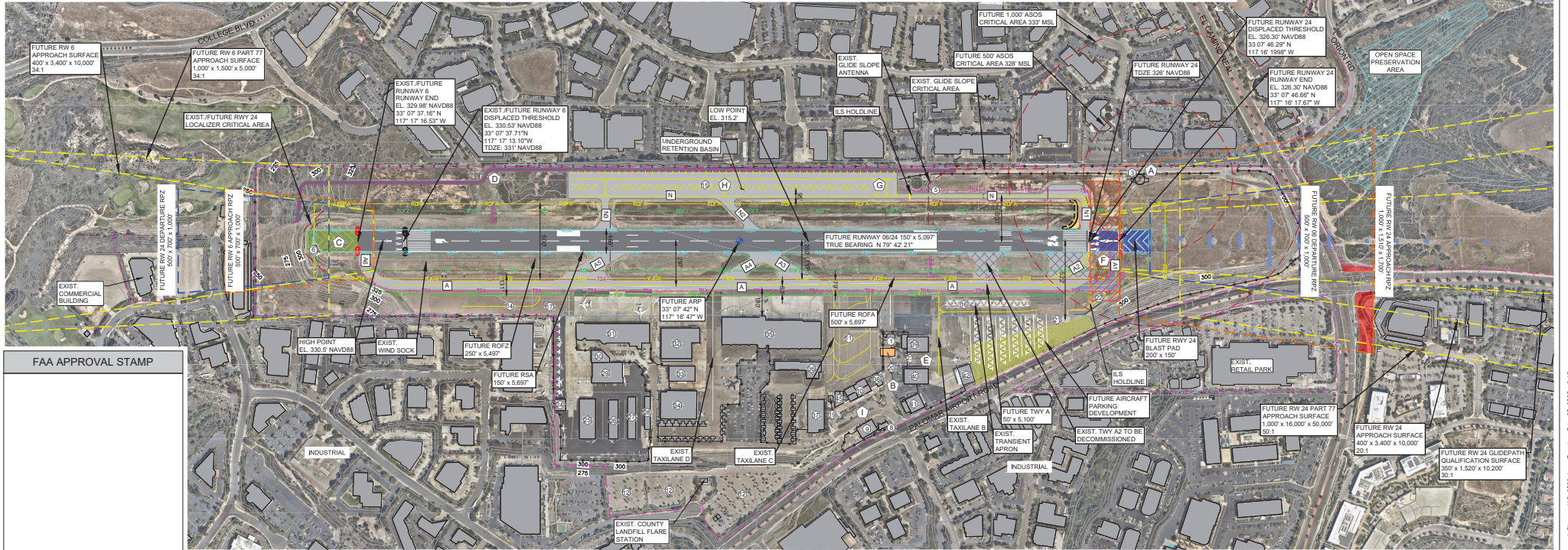
FACILITY LEGEND CONT.		
ID	DESCRIPTION	NOTES
26	EXIST. CARLSBAD JET CENTER	
27	EXIST. ATLANTIC AVIATION	
28	EXIST. BUILDING #2038	
29	EXIST. BUILDING #2028	
30	EXIST. ATLANTIC AVIATION	
31	EXIST. BUILDING 2150	
32	EXIST. AIRPORT OWNED HANGAR	
33	EXIST. RESTAURANT	
34	EXIST. WESTERN FLIGHT	
35	EXIST. BUILDING #2208	
36	EXIST. CIVIC HELICOPTER	
37	EXIST. ROYAL JET	
38	EXIST. CBP / RENTAL CAR	

FUTURE PROJECT PLAN		
Ⓐ	RELOCATE SEGMENTED CIRCLE AND WINDING EQUIPMENT	
Ⓑ	RELOCATE ARFF BUILDING	
Ⓒ	RELOCATE THE VEHICLE SERVICE ROAD	
Ⓓ	RELOCATE LIGHTING VAULT	
Ⓔ	200' EXTENSION OF RW 06-24 AND TWY A	
Ⓕ	REMOVE FUEL FARM ON NORTH APRON	
Ⓖ	REMOVE NORTH APRON AND TWY N	
Ⓗ	PASSENGER/ADM/PARKING FACILITY IMPROVEMENTS	

- ### NOTES
- SEE THE AIRPORT DATA SHEET 02 FOR AIRPORT AND RUNWAY DATA, WIND DATA, AND CURRENT AND FUTURE DEVIATIONS FROM FAA DESIGN STANDARDS.
  - SEE THE "EXISTING AIRSPACE PLAN" SHEETS 11 AND 12 AND "INNER APPROACH - OFZ DRAWING" SHEETS 09 AND 10 FOR REPRESENTATIVE PENETRATIONS TO FAR PART 77 AND APPROACH SURFACES.
  - OBSTRUCTION MAPPING SOURCE IS FAA DIGITAL OBSTACLE FILE DATED FEBRUARY 2016. REFER TO SHEETS 11 THROUGH 16 FOR EXTENSIVE AIRSPACE OBSTRUCTIONS.
  - AIRFIELD TOPOGRAPHY SOURCE IS THE COUNTY OF SAN DIEGO SURVEY DATED FEBRUARY 2012.
  - ALL COORDINATES ARE BASED ON NAD83 AND NAVD88.
  - THERE ARE NO SECTION CORNERS OR PERMANENT MONUMENTS WITHIN THE ALP MAP COVERAGE FOR COORDINATE REFERENCE.
  - AIRPORT LAND USES AND AIRPORT ZONING ARE DEPICTED ON SAN DIEGO COUNTY REGIONAL AIRPORT AUTHORITY PLANS.
  - THE AIRPORT IS NOT SUBJECT TO FLOODING.
  - ALL AIRFIELD PAVEMENTS ARE ASPHALTIC CONCRETE. SOME PRIVATE APRONS ARE CONCRETE.
  - SITING OF NAVAIDS AND LIGHTING IS SUBJECT TO FAA REVIEW AND DESIGN.
  - THIS SET OF DRAWINGS IS FOR FACILITY PLANNING PURPOSES ONLY, AND SHALL NOT BE USED FOR FLIGHT PLANNING, FLIGHT OBSTRUCTION ANALYSIS, FLIGHT OPERATIONS TAKEOFF OR LANDING OR FOR NAVIGATION.
  - TO ENHANCE READABILITY, ONLY THE FUTURE CONDITION IS SHOWN. EXISTING FACILITIES/NAVAIDS THAT ARE RETAINED IN THE FUTURE CONDITION ARE DEPICTED IN THE FUTURE SYMBOL. FOR EXISTING CONDITIONS, REFER TO SHEET 04.
  - RSA DETERMINATION WILL BE DONE PRIOR TO DESIGN OF EMAS AND RUNWAY EXTENSION.
  - SPONSOR TO REMBURSE FAA FOR ANY PROJECT THAT DOES NOT MEET USEFUL LIFE EXPECTANCY, AS DEFINED BY THE FAA.
  - ON DECEMBER 8, 2021, THE COUNTY BOARD OF SUPERVISORS APPROVED A RUNWAY EXTENSION OF 200 FEET WITH A VARIANCE OF UP TO 10%, IF NEEDED.
  - RUNWAY 06 END EMAS PROVIDE JET BLAST SOIL EROSION PROTECTION



THE CONTENTS OF THIS DOCUMENT DO NOT NECESSARILY REFLECT THE OFFICIAL VIEWS OR POLICY OF THE FAA. ACCEPTANCE OF THIS PLAN BY THE FAA DOES NOT IN ANY WAY CONSTITUTE A COMMITMENT ON THE PART OF THE UNITED STATES TO PARTICIPATE IN ANY DEVELOPMENT DEPICTED THEREIN NOR DOES IT INDICATE THAT THE PROPOSED DEVELOPMENT IS ENVIRONMENTALLY ACCEPTABLE IN ACCORDANCE WITH APPROPRIATE PUBLIC LAWS.



**COUNTY OF SAN DIEGO**  
**DEPARTMENT OF PUBLIC WORKS**  
 5500 OVERLAND AVENUE, SAN DIEGO, CA 92123-1295



AIRPORTS ENGINEER	JASON FORGA	DATE:	
AIRPORT MANAGER	JOHN OTTO	DATE:	
DIRECTOR OF AIRPORTS	JAMIE ABBOTT	DATE:	

Conditionally approved: Subject to Environmental Review

REVISIONS	BY	APPROVED	DATE
OCTOBER 2021 MASTER PLAN UPDATE	BC		02/23

COORDINATE INDEX	N _____ E
CONST. COMPL.	
FIELD REVISIONS	

**MCCLELLAN-PALOMAR AIRPORT**  
 A COUNTY OF SAN DIEGO AVIATION FACILITY - CARLSBAD CALIFORNIA  
**AIRPORT LAYOUT PLAN DRAWINGS**  
**FUTURE AIRPORT LAYOUT PLAN**

SCALE: HOR. AS SHOWN VERT. NONE  
 W.A. \_\_\_\_\_ R.S. \_\_\_\_\_

SHEET 5 OF 18 SHEETS

C004-Future Airport Layout Plan - ALP 2022.dwg Tuesday, Feb. 28, 2023, 2:10pm