

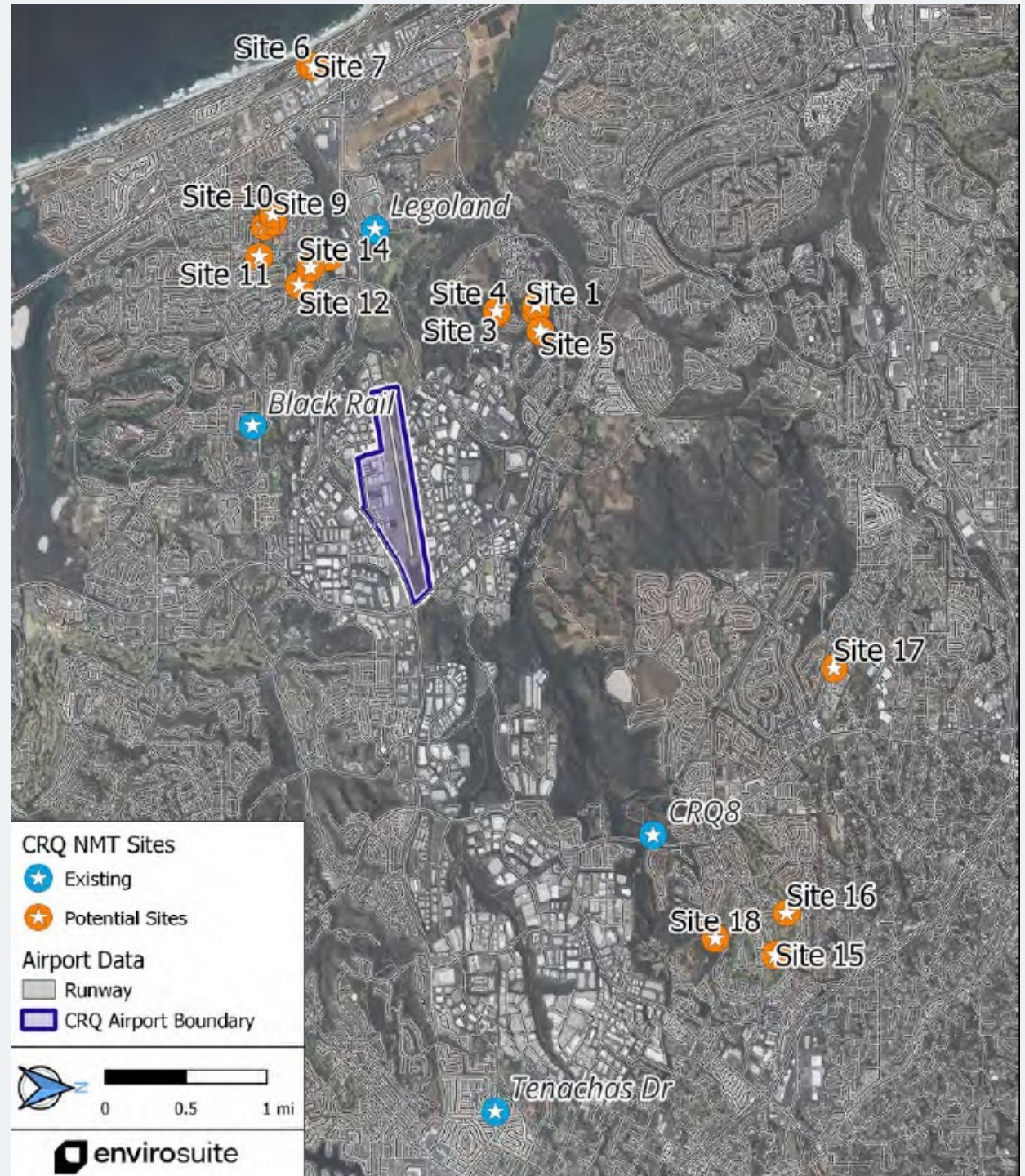


County of San Diego

# McCLELLAN-PALOMAR AIRPORT

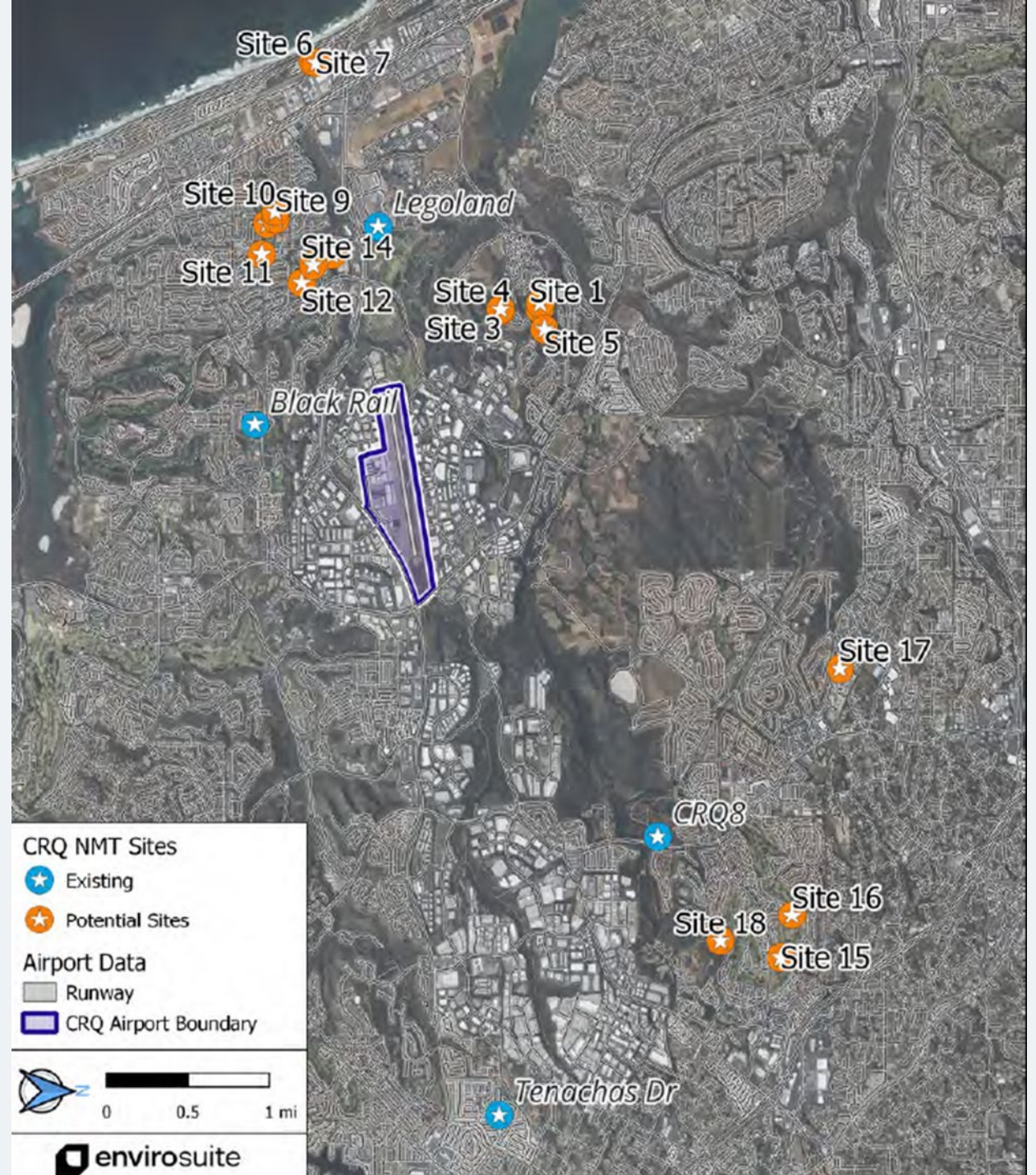


# Agenda Item 8 – New Noise Monitor Update





- The Airport received input from the community regarding 31 potential locations to site the New NMT
- Envirosuite performed a Noise Monitoring Terminal (NMT) Site Survey Report
- The report looked at the viability of 18 possible locations located in the Cities of Carlsbad, Vista and Oceanside.
- Site 1 has been chosen for site placement of a New NMT
- Site 11 has been chosen for site placement of our second new NMT.






# QUESTIONS on Item 8



# Agenda Item 9 – Update To DASHBOARD


The screenshot shows a web dashboard for the County of San Diego. At the top left is the County of San Diego logo. To its right is a navigation menu with links for Home, Operation, Noise, Complaint, and Performance. The main header features a large image of an airplane's nose and engines against a sunset sky. The text 'Interactive Monthly Reports' is centered over this image, with a subtext explaining that the website publishes monthly reports on key airport metrics such as operations, noise, complaints, and overall performance at McClellan-Palomar Airport. Below the header are four report cards: 'Operations report' with a bar chart icon, 'Noise report' with a waveform icon, 'Complaints report' with a speech bubble icon, and 'Performance report' with a bar chart icon. Each card includes a brief description of the report's content and a 'View monthly report >' link.

 [Home](#) [Operation](#) [Noise](#) [Complaint](#) [Performance](#)

## Interactive Monthly Reports

This website publishes monthly reports on key airport metrics such as operations, noise, complaints, and overall performance at McClellan-Palomar Airport.


### Operations report



Detailed analysis of aircraft activity including breakdown by runways usage, procedure compliance, aircraft categories, and more.

[View monthly report >](#)


### Noise report



This report provides data such as average noise levels by day, runway, and aircraft type by Noise Monitoring Terminals.

[View monthly report >](#)


### Complaints report



An in-depth look at noise complaints categorized by disturbance-type, time of day, analysis on the Top 10 most frequent complainants, and more.

[View monthly report >](#)

### Performance report





# UPDATE ON DASHBOARD – Palomar Website

<https://airport-metrics.anoms.aero/crq123ddafy61>

## McClellan-Palomar Airport



**Airport Terminal**

American Airlines will be starting February 13, 2025 **NEW Service** from Carlsbad (CLD) to Phoenix (PHX).



**FLIGHTS**

**About**      **Pilot Information**

**Resources**      **Opportunities**

**Dashboard**

**I want to report...**

McClellan-Palomar Airport in Carlsbad is a gateway to and from San Diego's North County. It serves the general aviation community, corporate aircraft and commercial services.

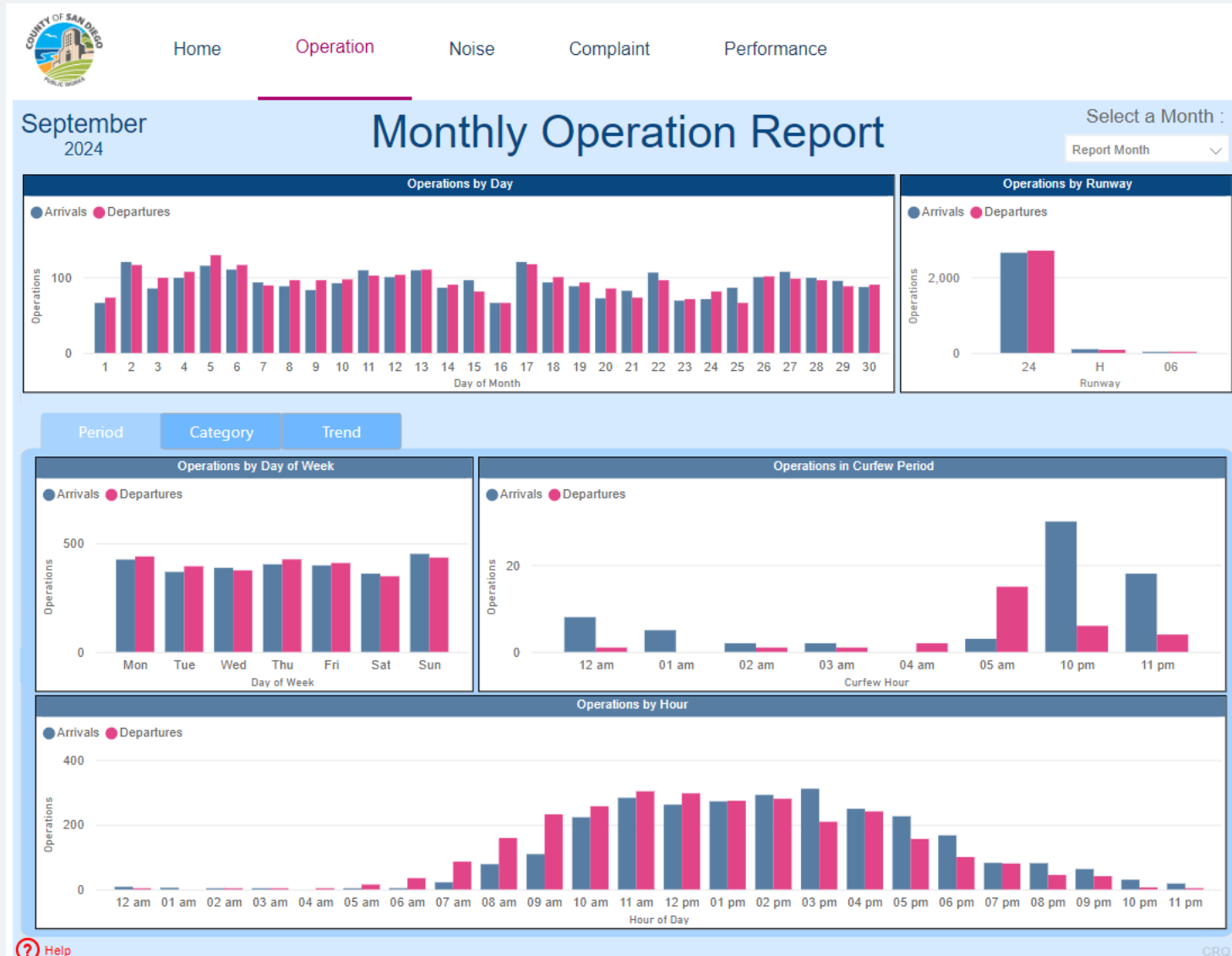
What makes this airport so popular is its proximity to business and recreation. Major corporations and world-class resorts are just minutes from McClellan-Palomar. Some of the finest beaches in San Diego County are close to the airport and offer surfers, swimmers and sun worshippers balmy weather and

Select Language  
Powered by Google Translate




- Popular Services**
- Air Taxi & Charter Services
  - Flight Tracker
  - Master Plan Update
  - Rental Car Companies
  - Taxi-Shuttle Services
  - Airports Homepage
  - More Services

# UPDATE ON DASHBOARD – Operations Tab



# UPDATE ON DASHBOARD – Noise Tab - Location Tab


Home
Operation
Noise
Complaint
Performance

September 2024

## Monthly Noise Report

Select a Month  
Report Month ▼

Monitor Locations

- Black Rail Rd
- Camino Del Parque (Porta...)
- Easy St. (Portable)
- El Pato Ct
- Legoland Parking Structure
- Tenachas Dr
- Vista Fire Dept 5

Aircraft Noise by Day

Day of Month	Aircraft Noise
1	2
2	7
3	17
4	12
5	21
6	4
7	18
8	7
9	6
10	13
11	6
12	7
13	6
14	5
15	0
16	8
17	4
18	4
19	10
20	8
21	11
22	9
23	9
24	9
25	7
26	13
27	5
28	4
29	11
30	16

Detail

Daily Average

9

---

Flights exceeding the 70dB noise limit each day

4

Location
Period
Category
Trend

Total Noise by Class

259

Aircraft

---

46

Community

Microsoft Bing
© 2024 TomTom, © 2024 Microsoft Corporation [Terms](#)



# UPDATE ON DASHBOARD – Complaint Tab – Period Tab



# Questions on Agenda Item 9

