

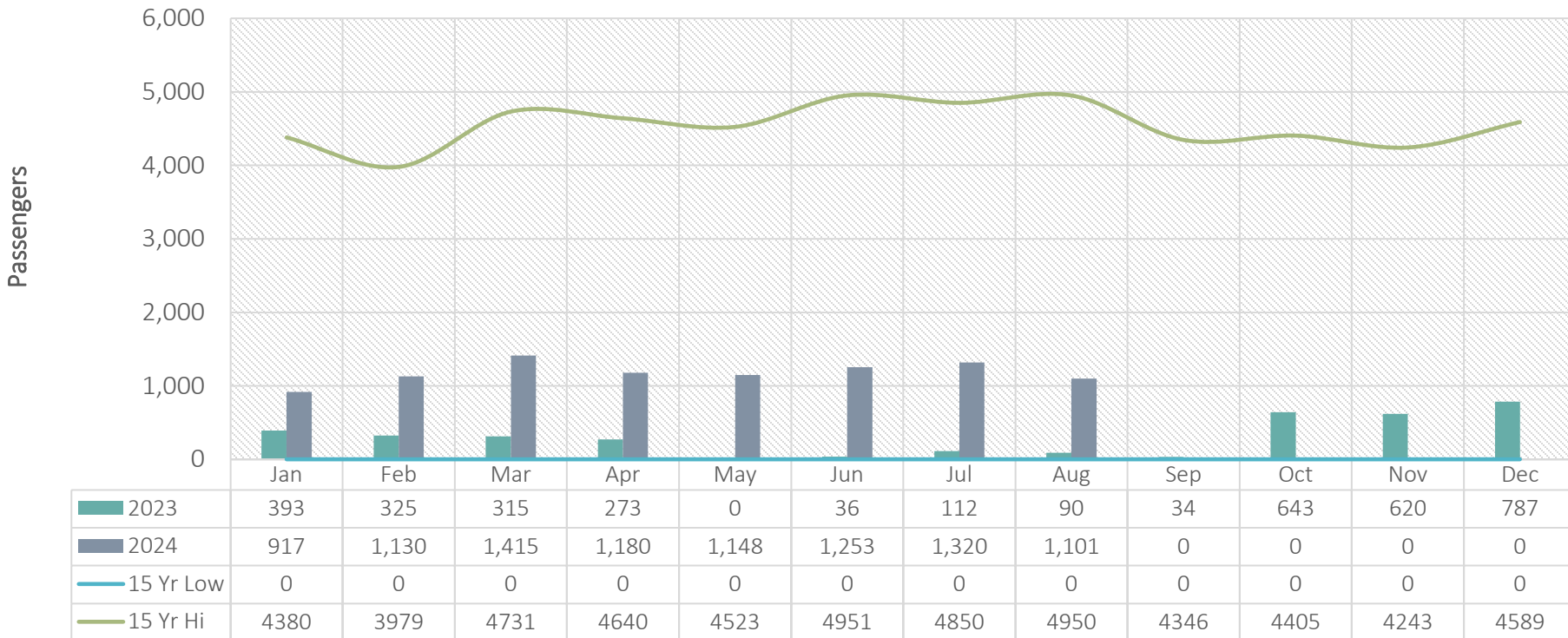
McClellan-Palomar Airport Monthly Airport Performance Report



August 2024



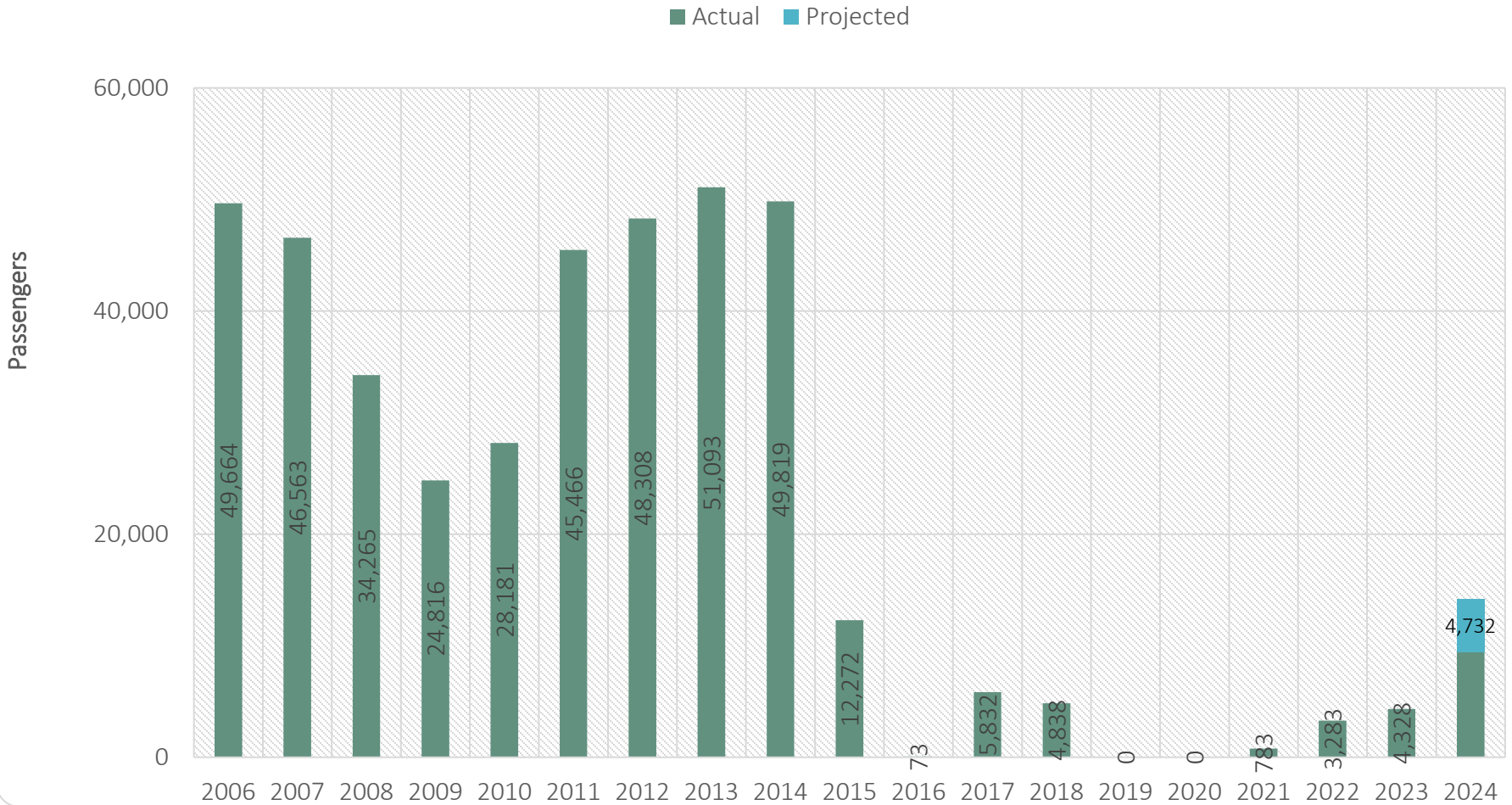
Monthly Enplanements



■ 2023
 ■ 2024
 — 15 Yr Low
 — 15 Yr Hi



Annual Enplanements



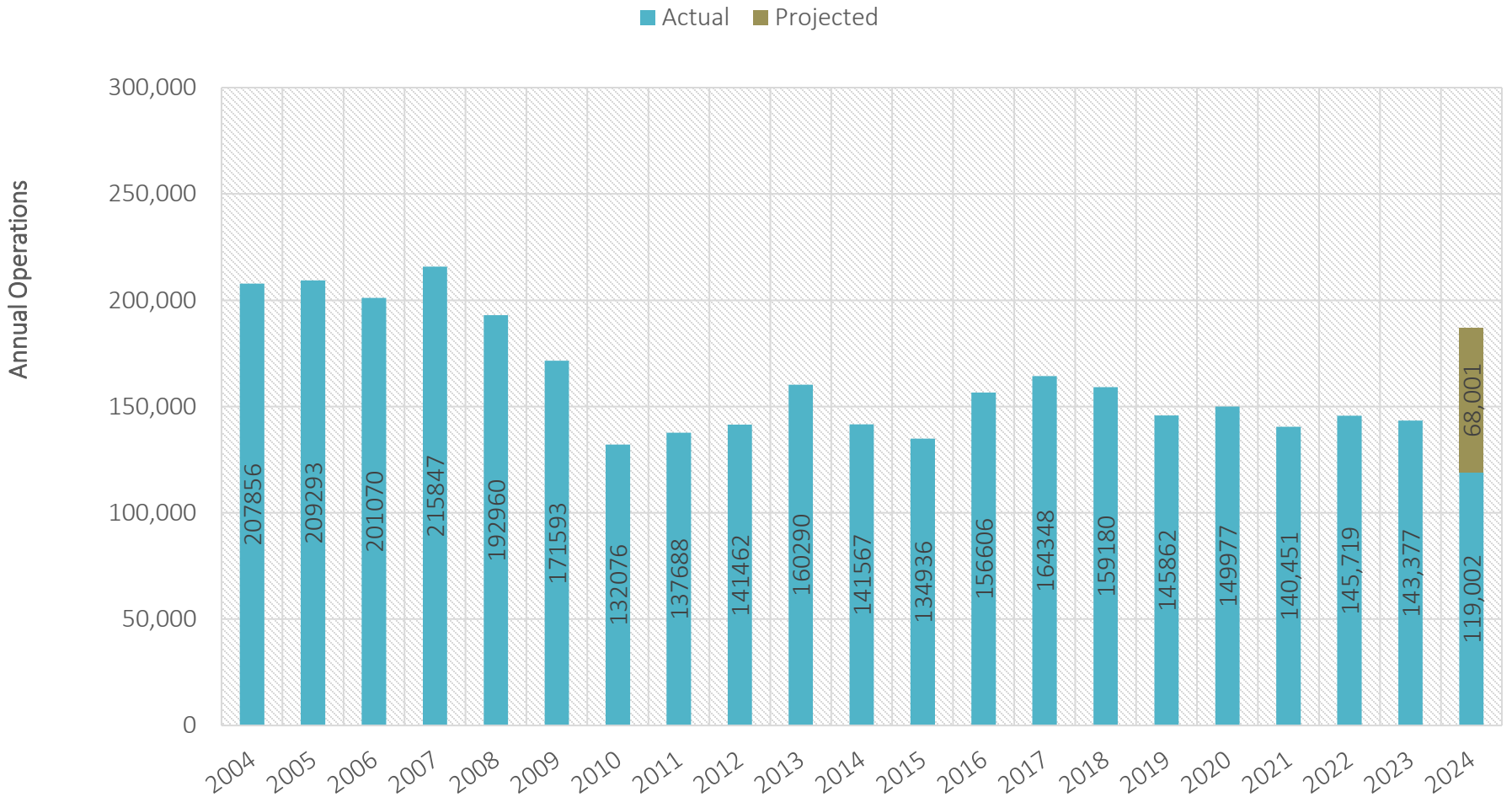


Monthly Take-Off & Landing Count



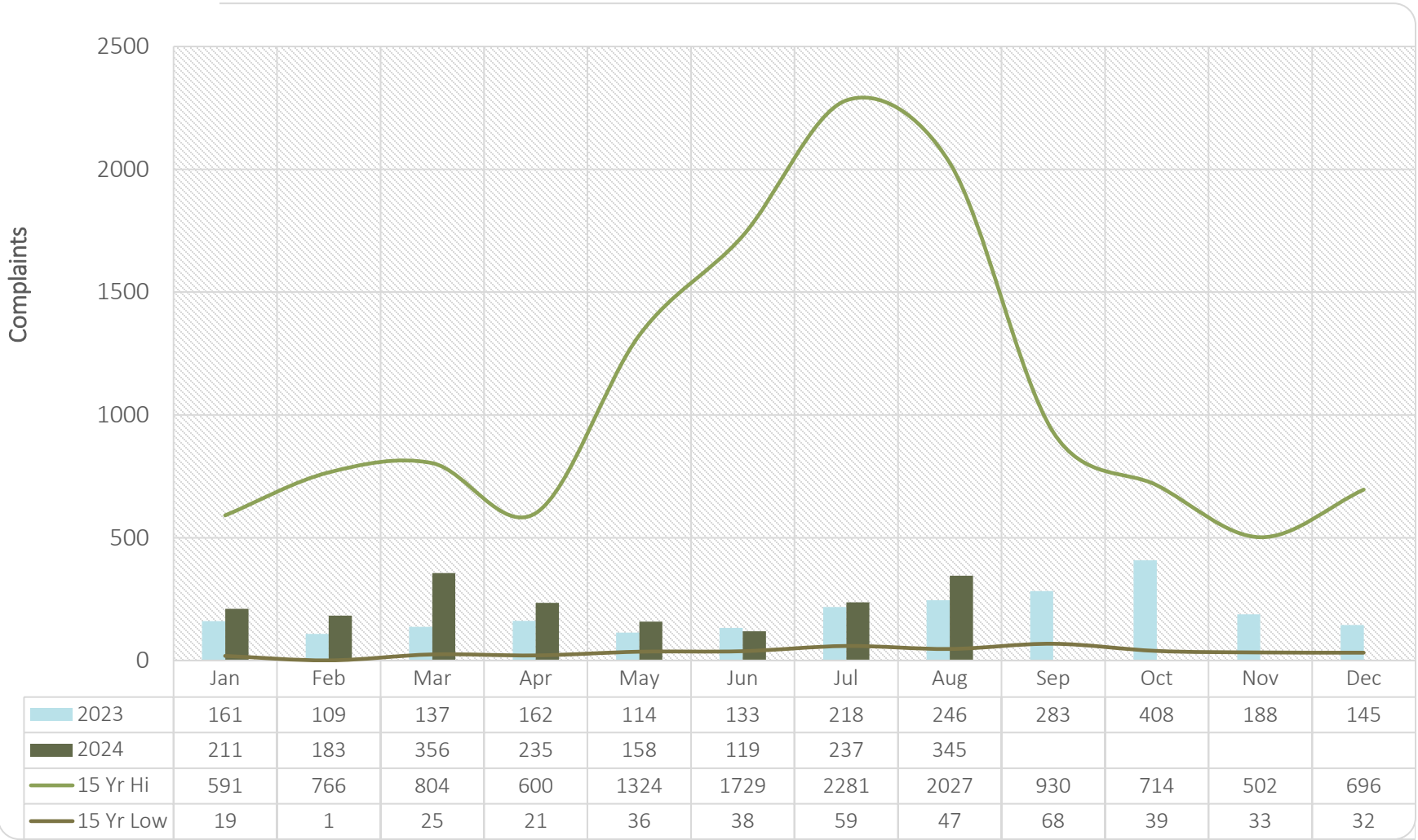


Annual Take-Off & Landing Count



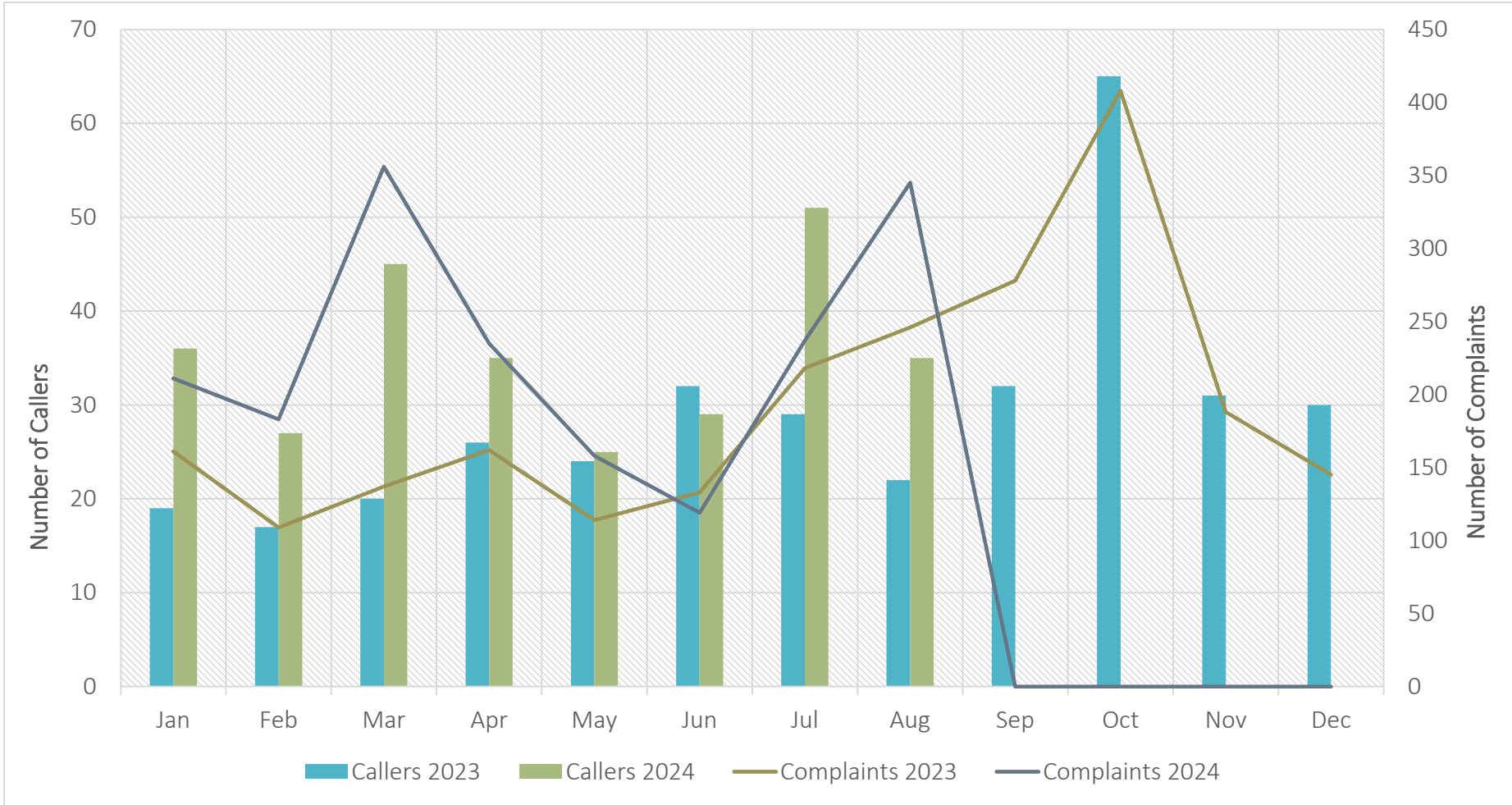


Total Monthly Complaints





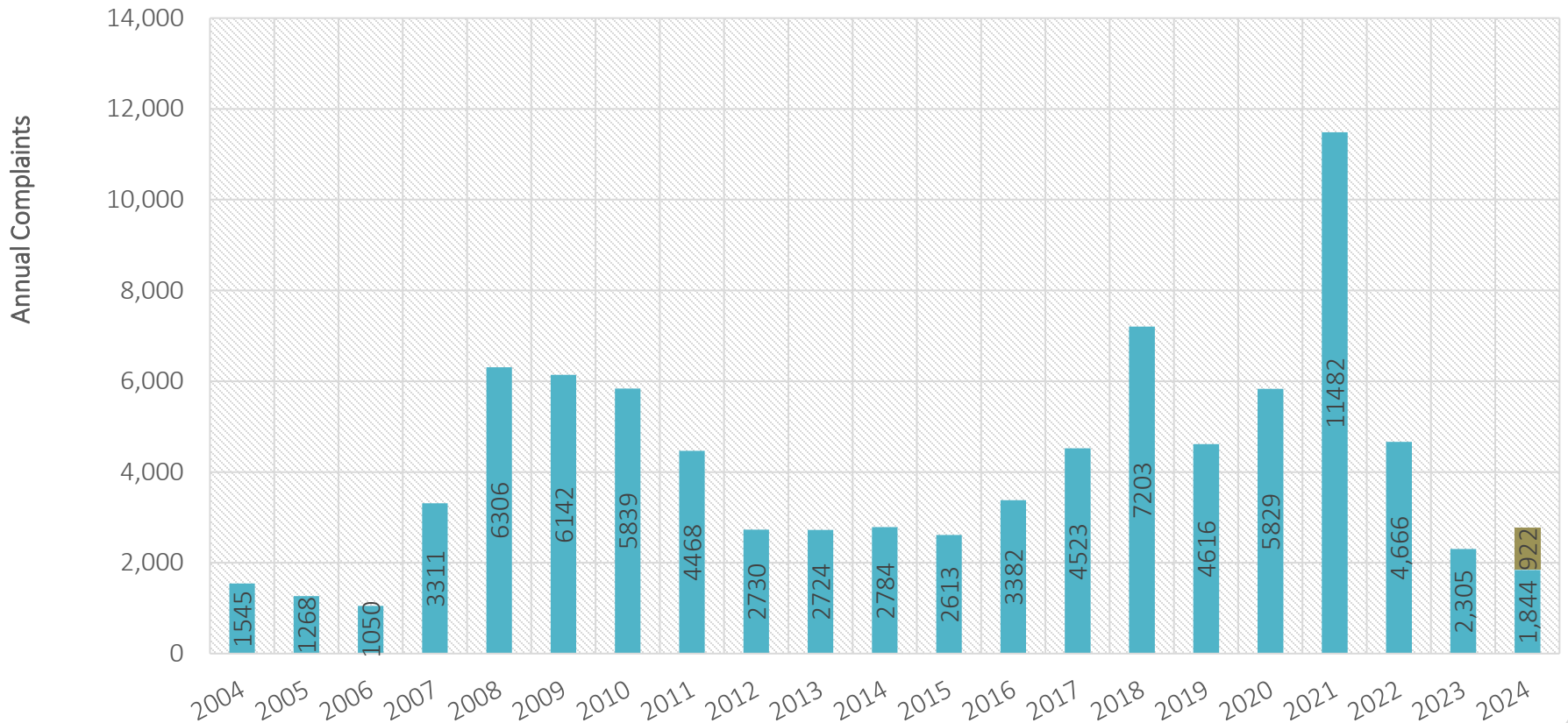
Callers & Complaints





Annual Complaints

Actual Projected





Complaints by Quadrant

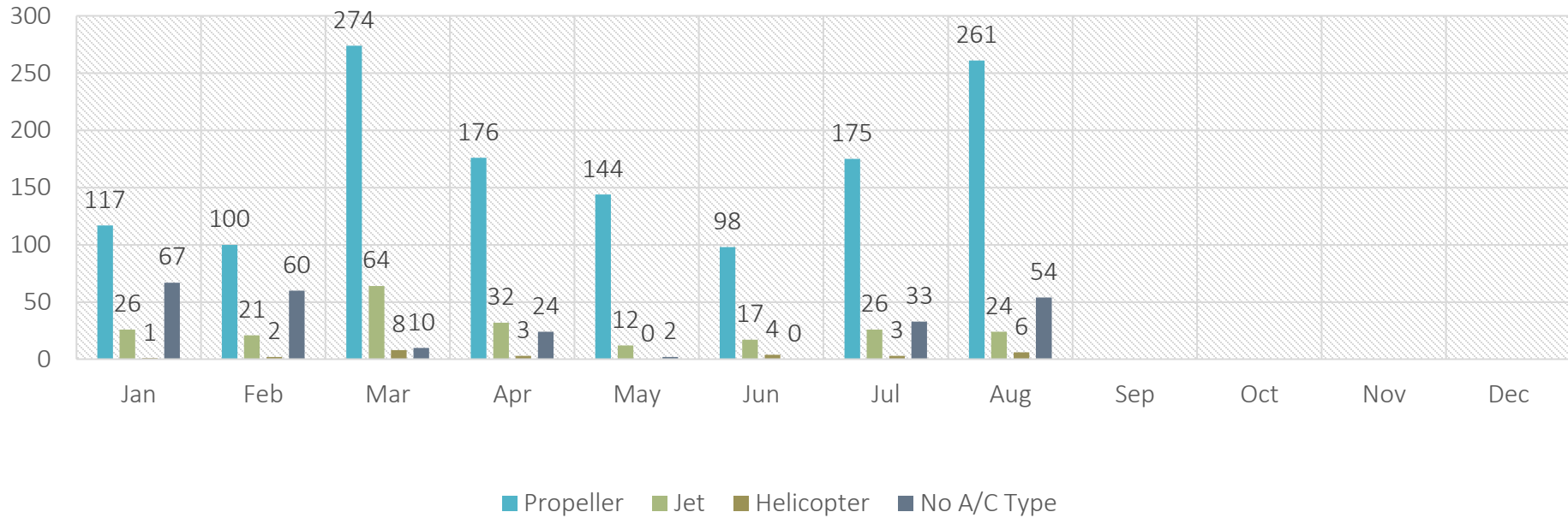
	Total Callers	Total Complaints	Filtered* Complaints
NW	7	259	18
SW	17	65	65
SE	8	15	15
NE	3	6	6
Total	35	345	104

72% of complaints were from 3 callers.

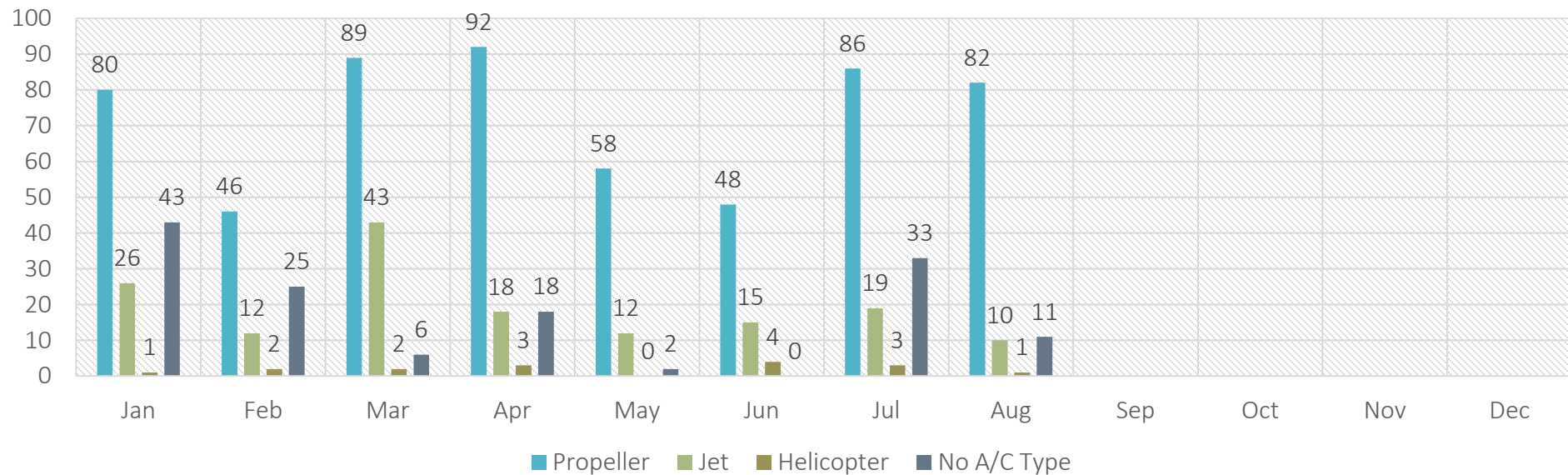
*In the filtered data set, the top 3 caller's complaints were reduced to the average number of complaints reported by the other callers.

** 0 complaints from 0 caller was not included. **

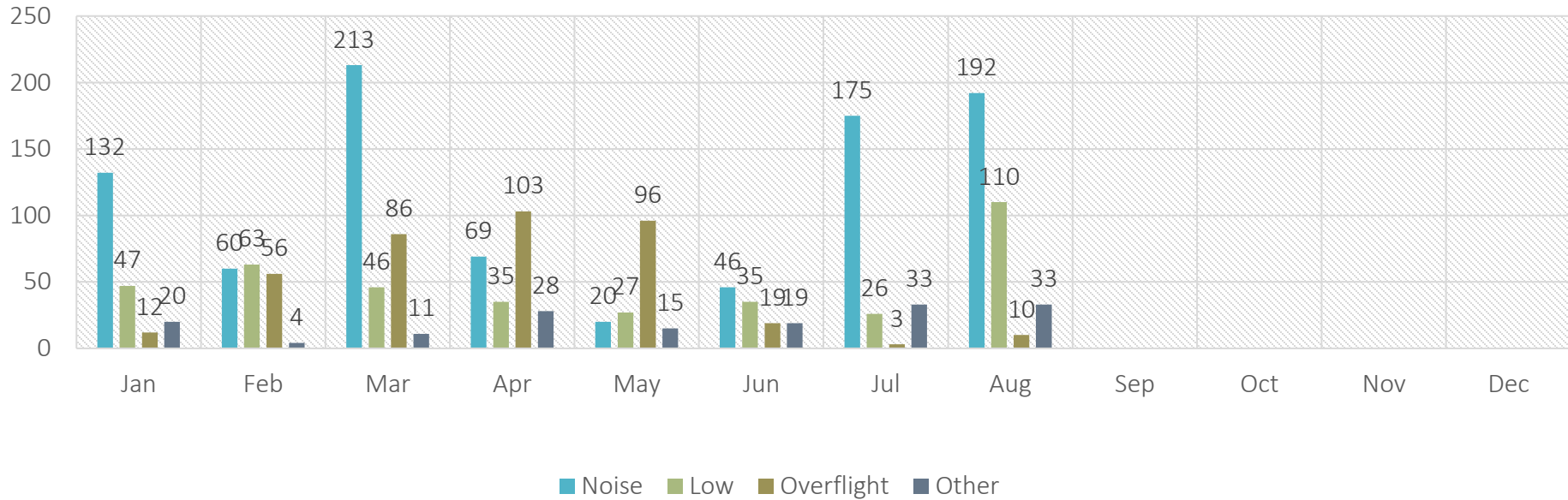
Complaints by Aircraft Type - All Data



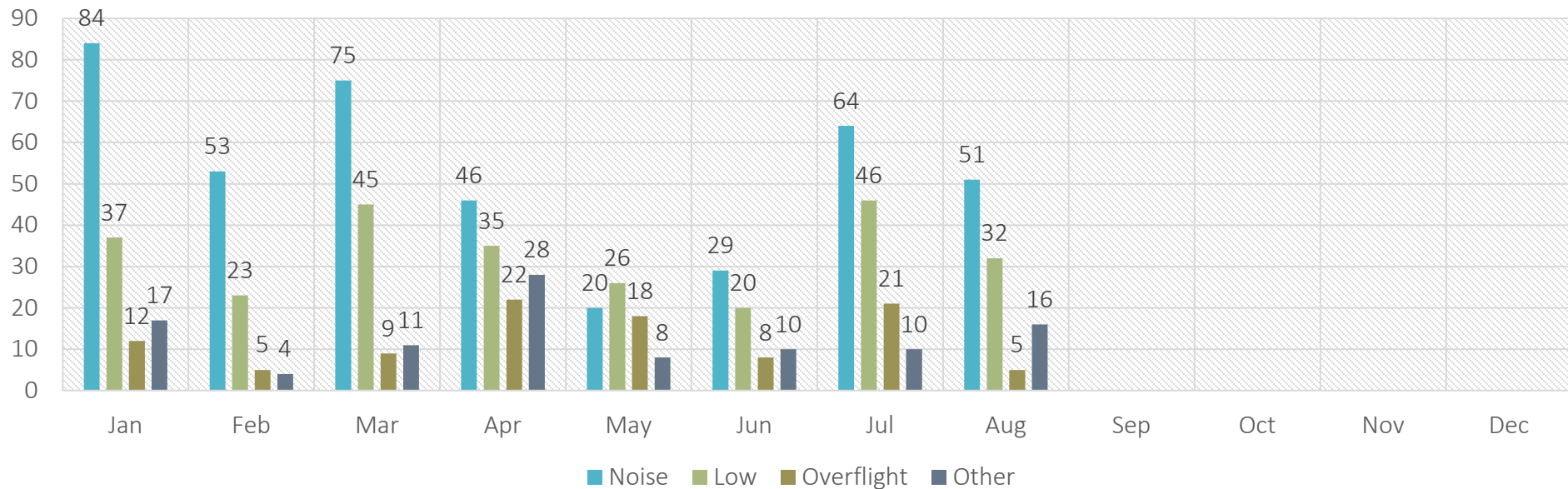
Complaints by Aircraft Type - Filtered Data



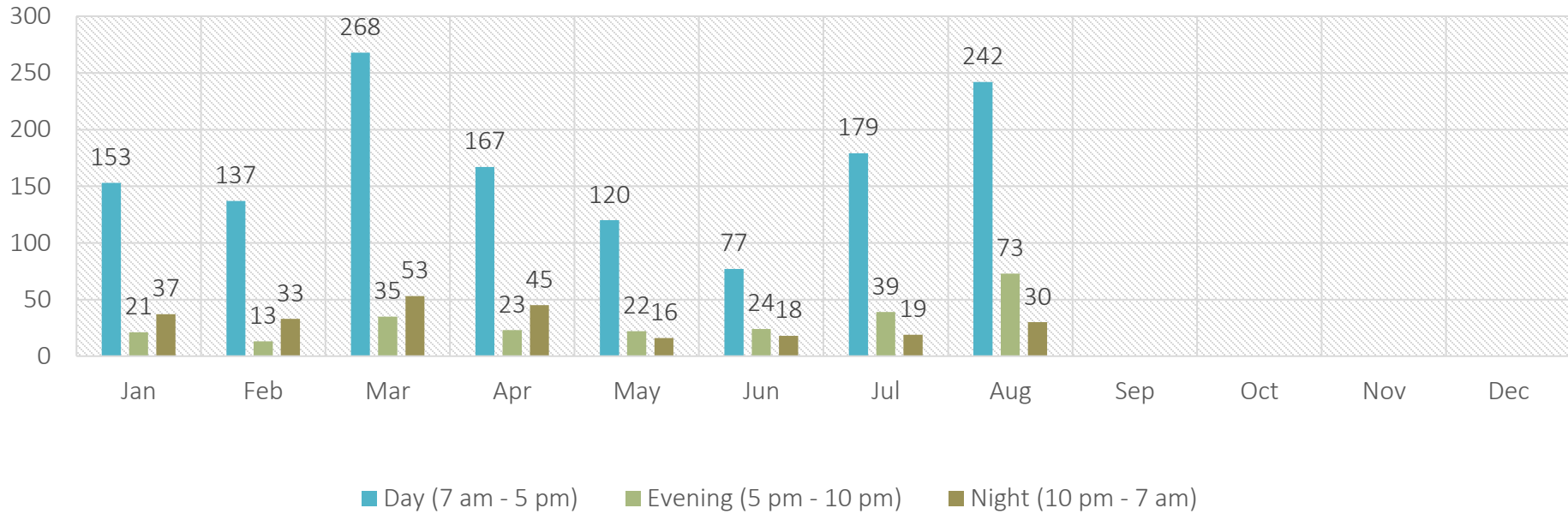
Complaints by Category - All Data



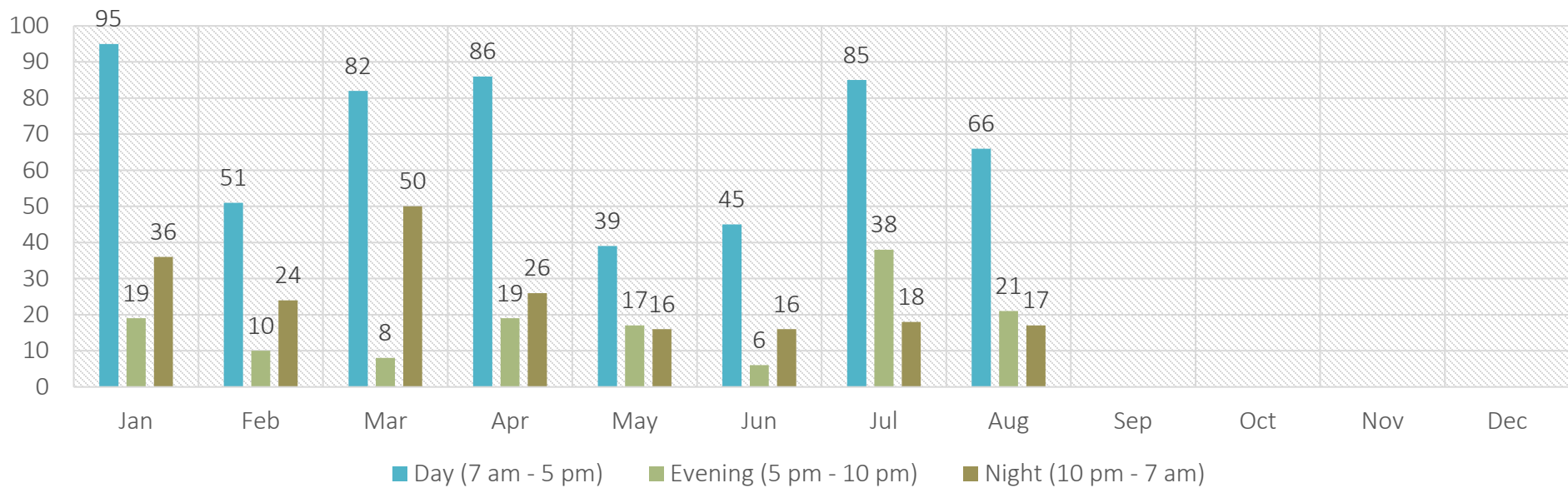
Complaints by Category - Filtered Data



Complaints by Time of Day - All Data



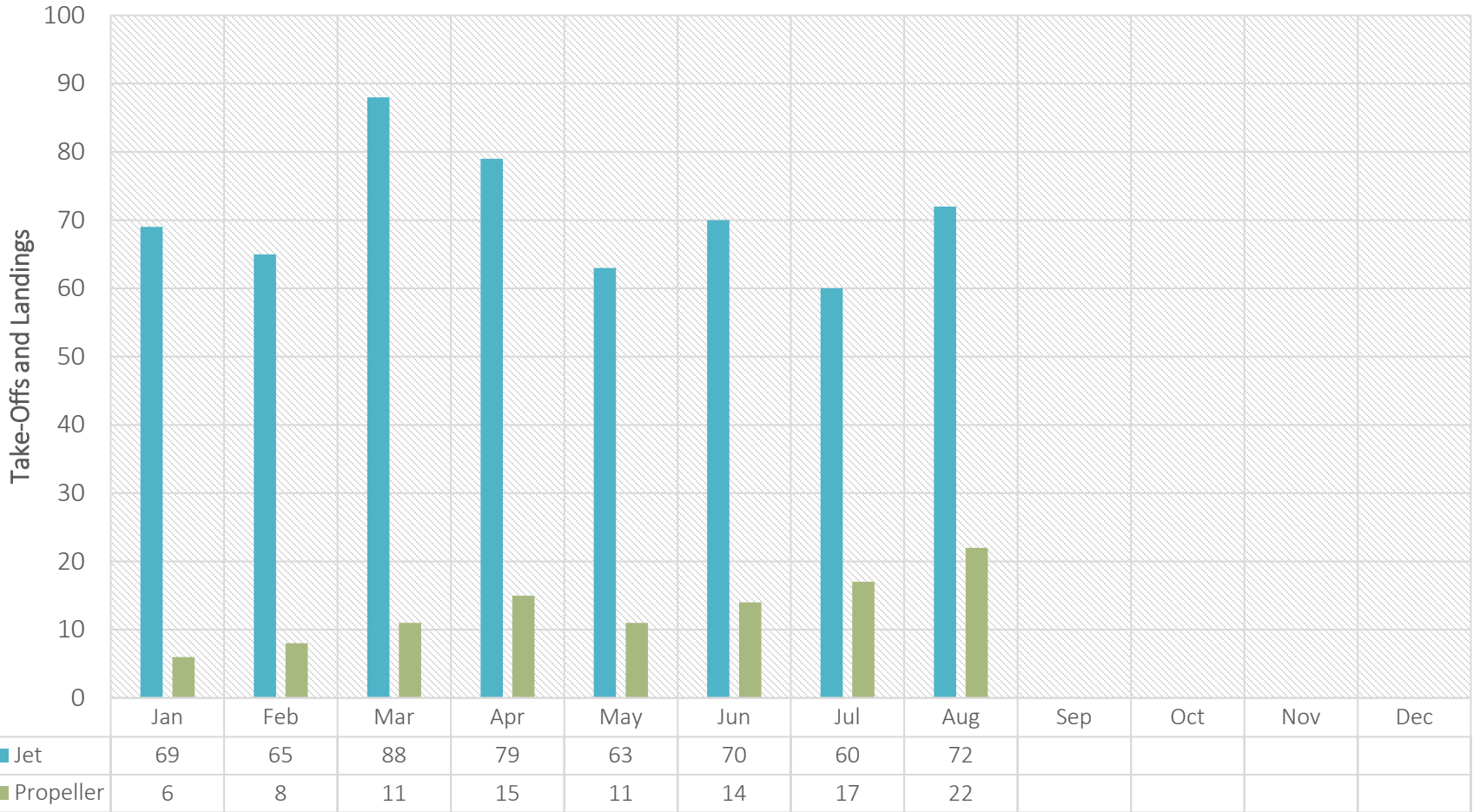
Complaints by Time of Day - Filtered Data





Flights During Voluntary Quiet Hours

Jets 10:00pm-7:00am, Props 12:00am-6:00am



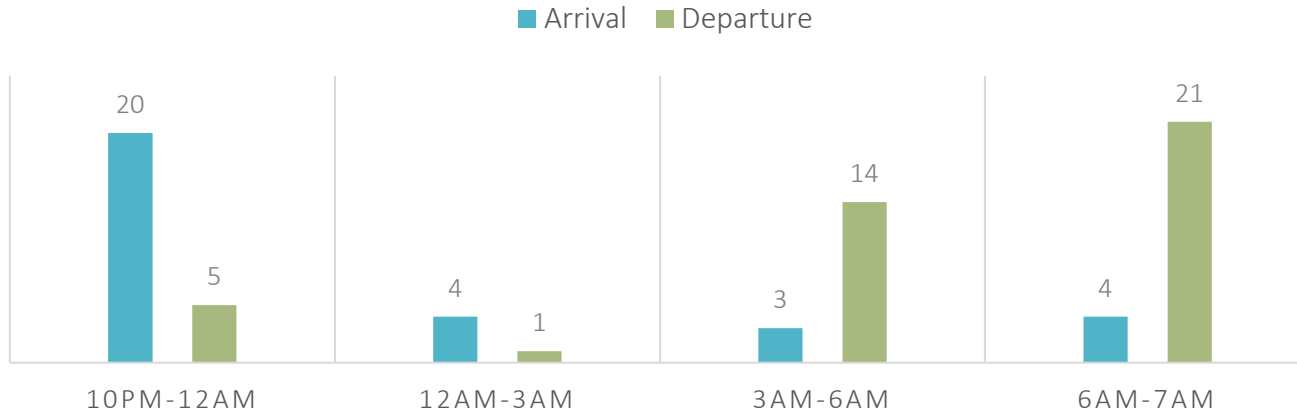
■ Jet ■ Propeller



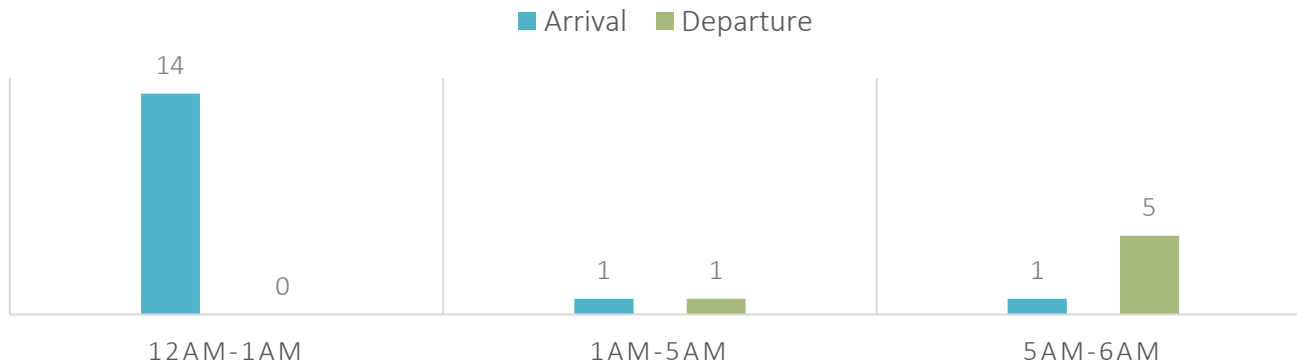
Flights During Voluntary Quiet Hours Breakdown

Jets 10:00pm-7:00am, Props 12:00am-6:00am

AUGUST QUIET HOURS: JETS (72)

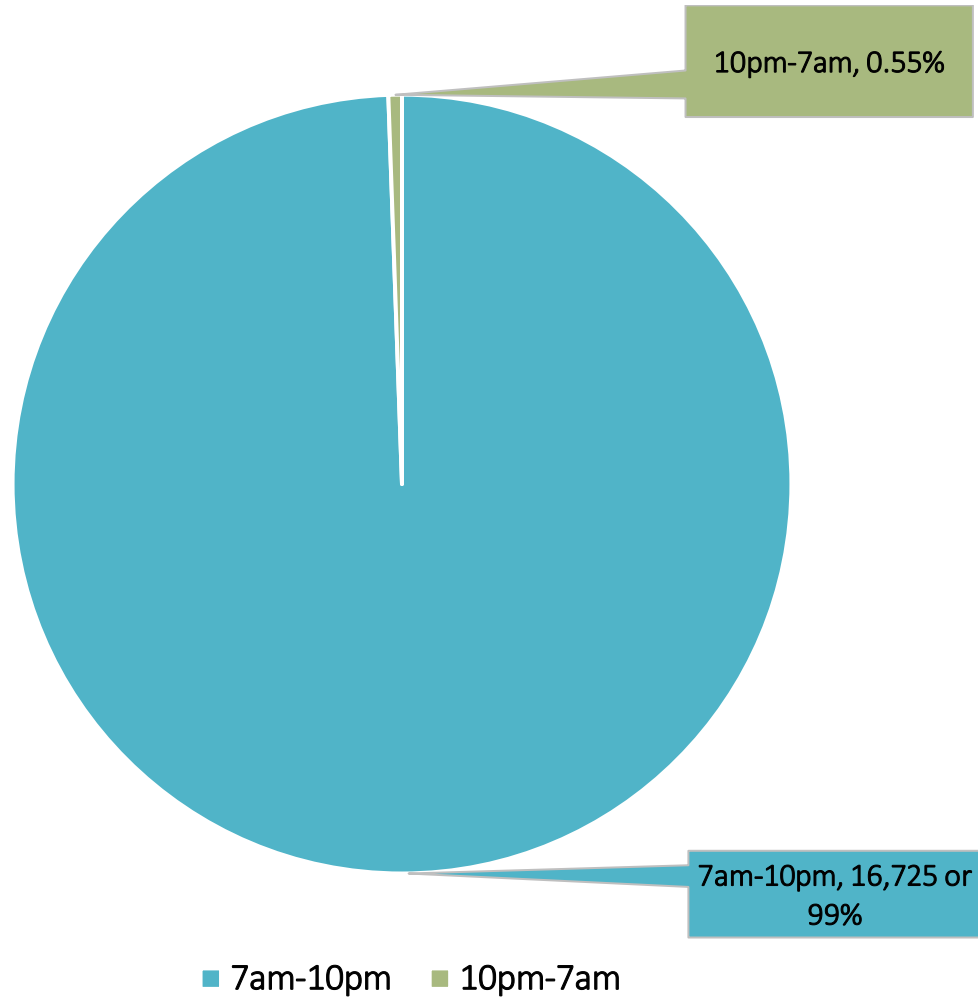


AUGUST QUIET HOURS: PROPS (22)



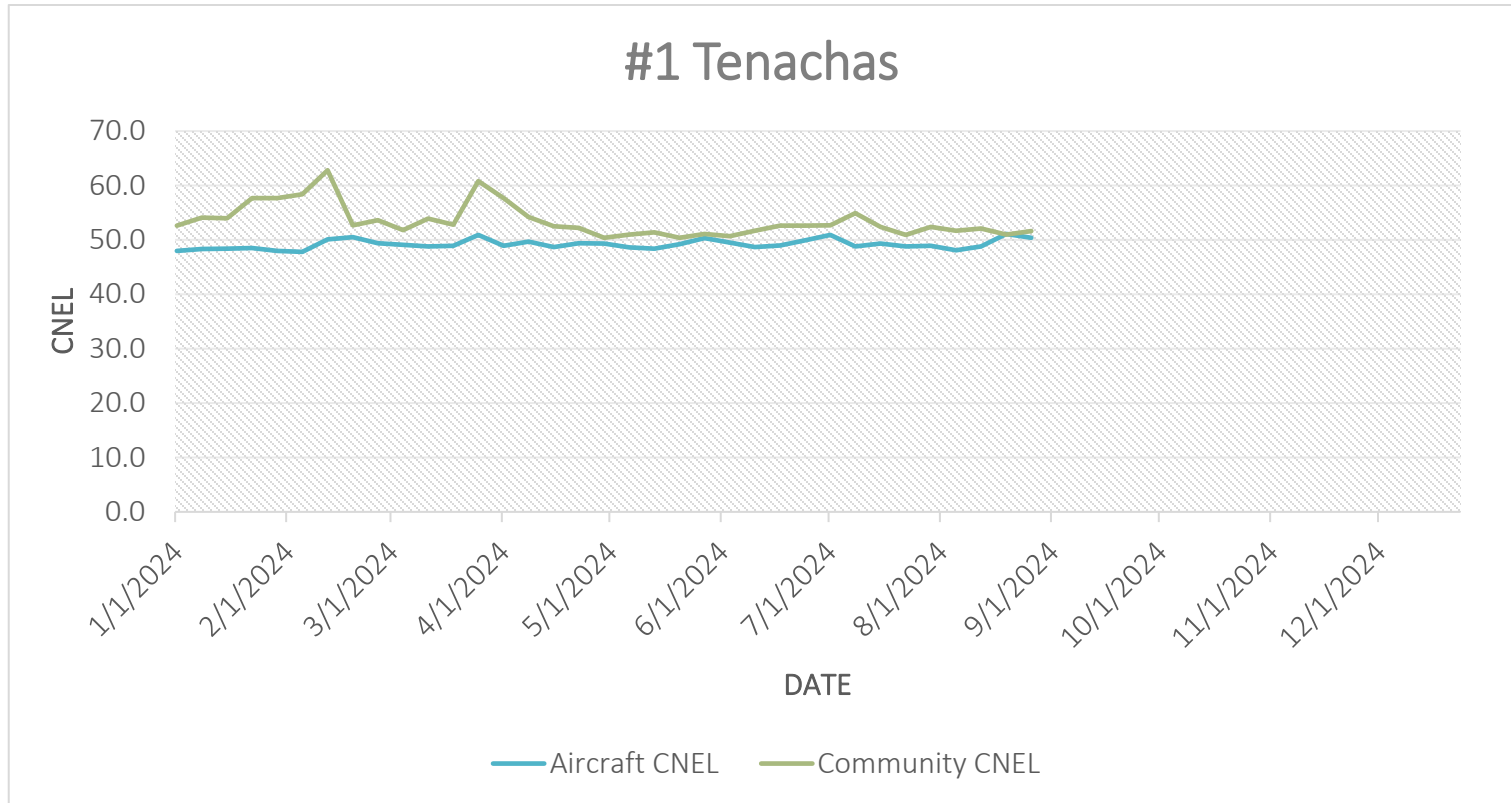


Daytime Operations vs Quiet Hours Operations



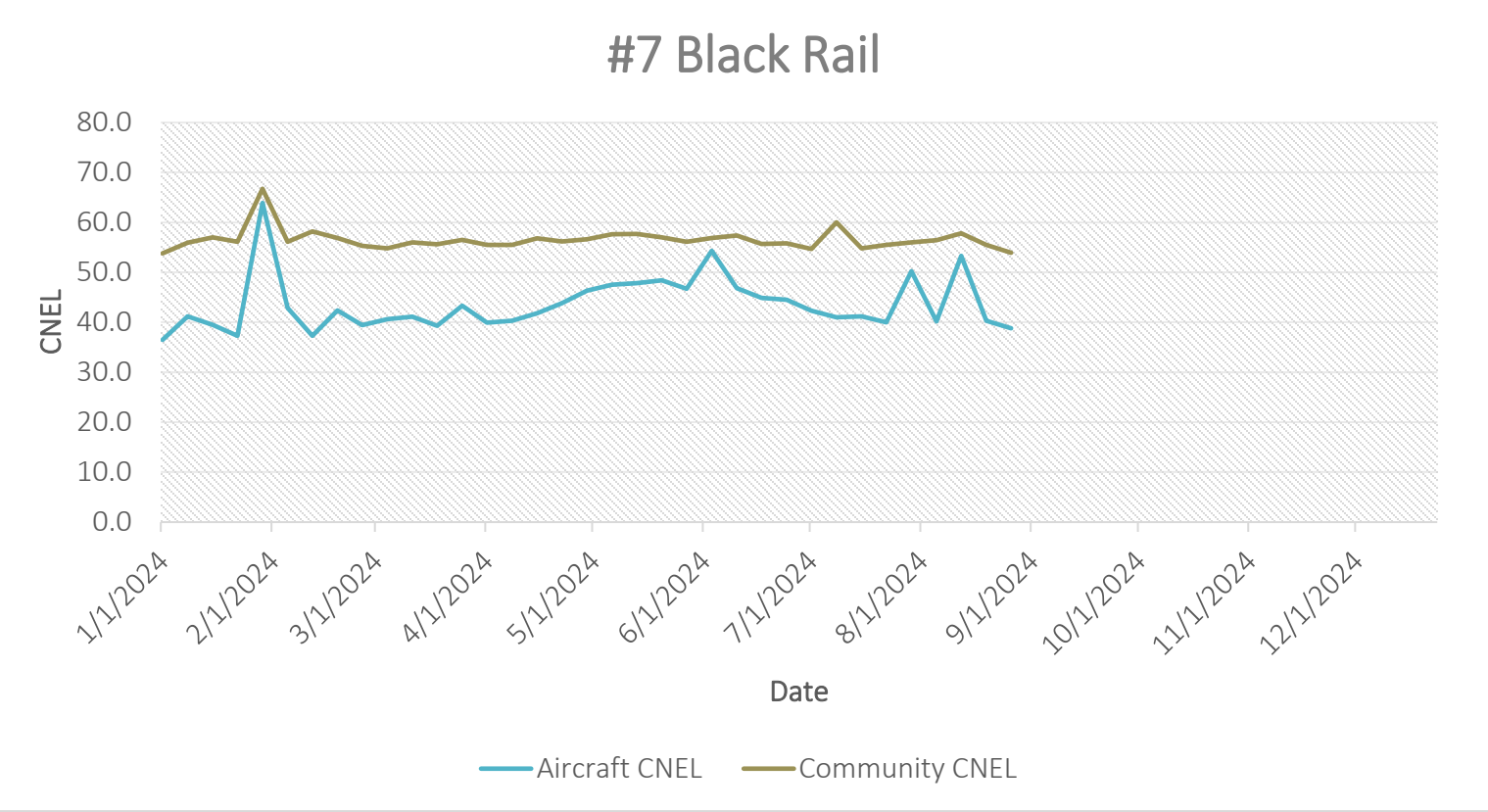


ANNUAL REVIEW OF NOISE MIC DATA



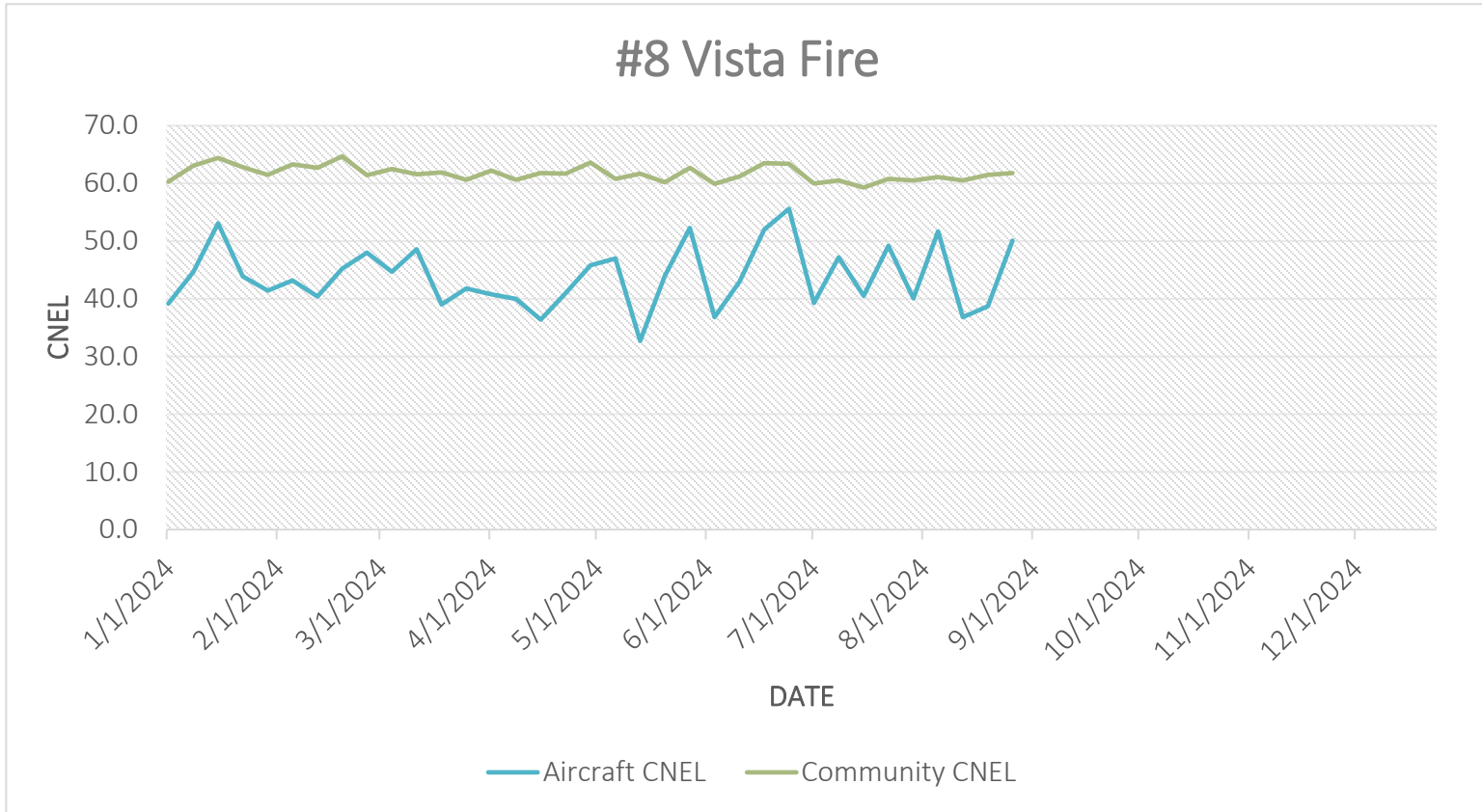


ANNUAL REVIEW OF NOISE MIC DATA



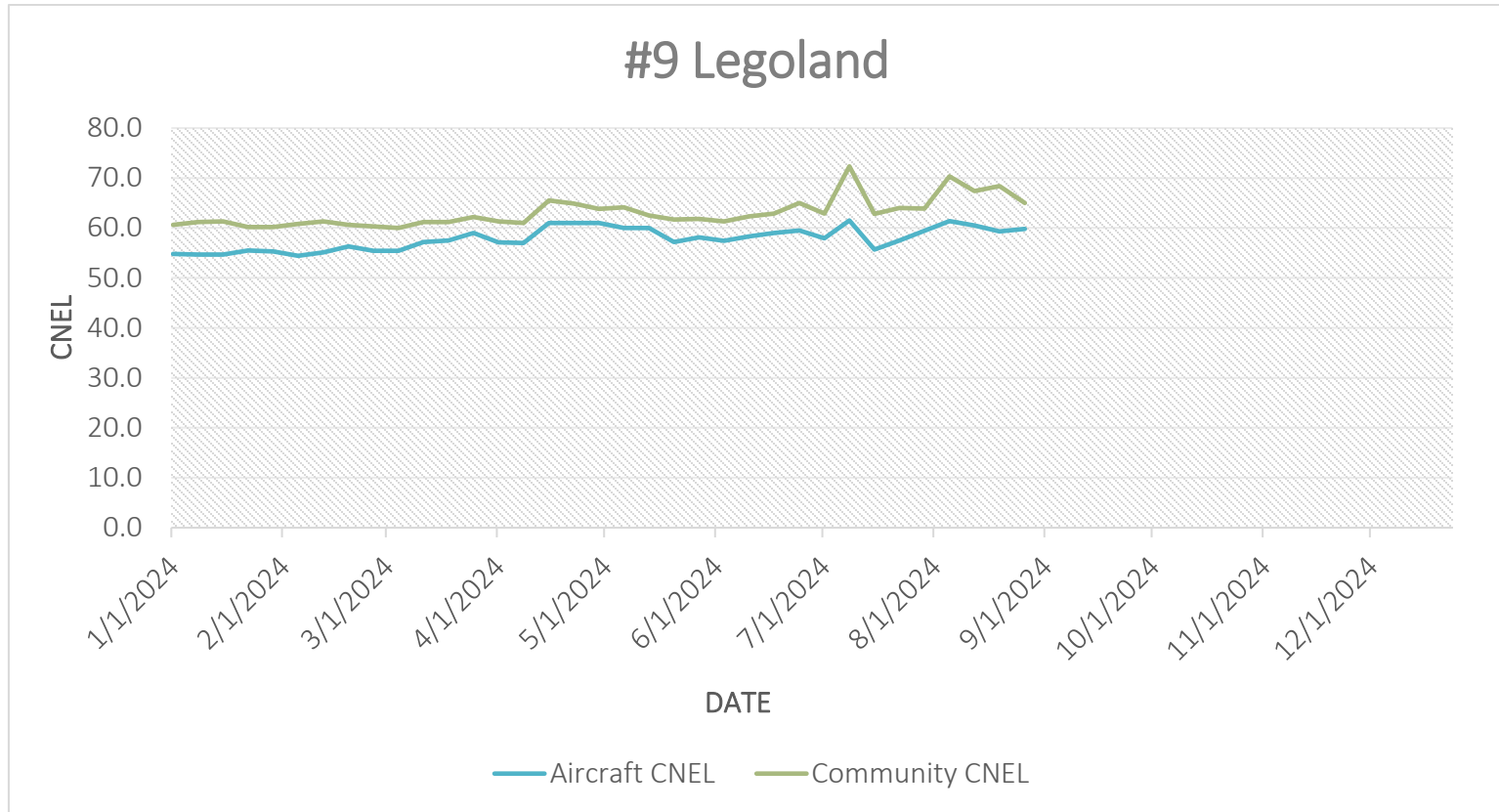


ANNUAL REVIEW OF NOISE MIC DATA





ANNUAL REVIEW OF NOISE MIC DATA



August 2024



Questions or Comments?