

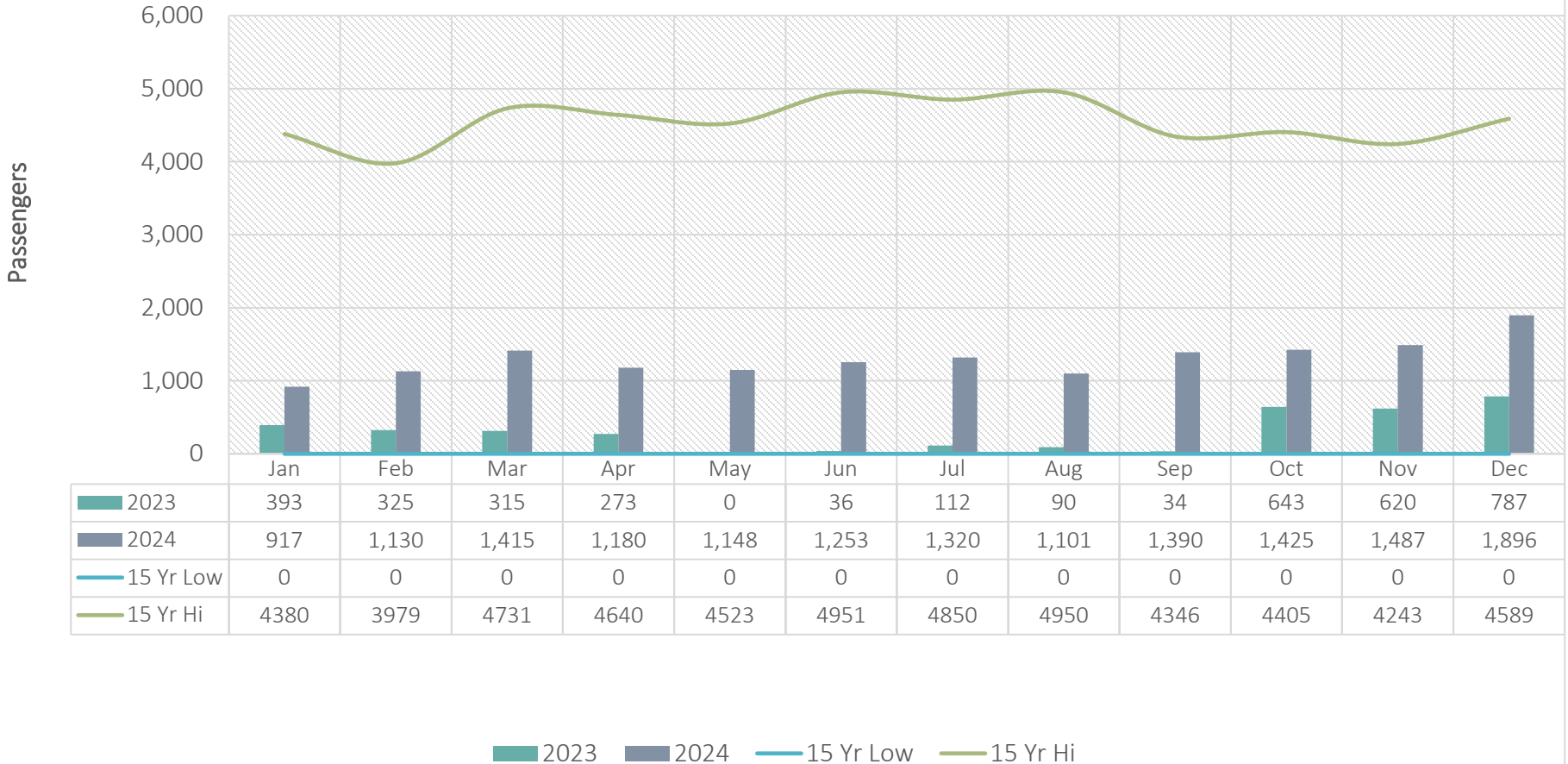
# McClellan-Palomar Airport Monthly Airport Performance Report



December 2024

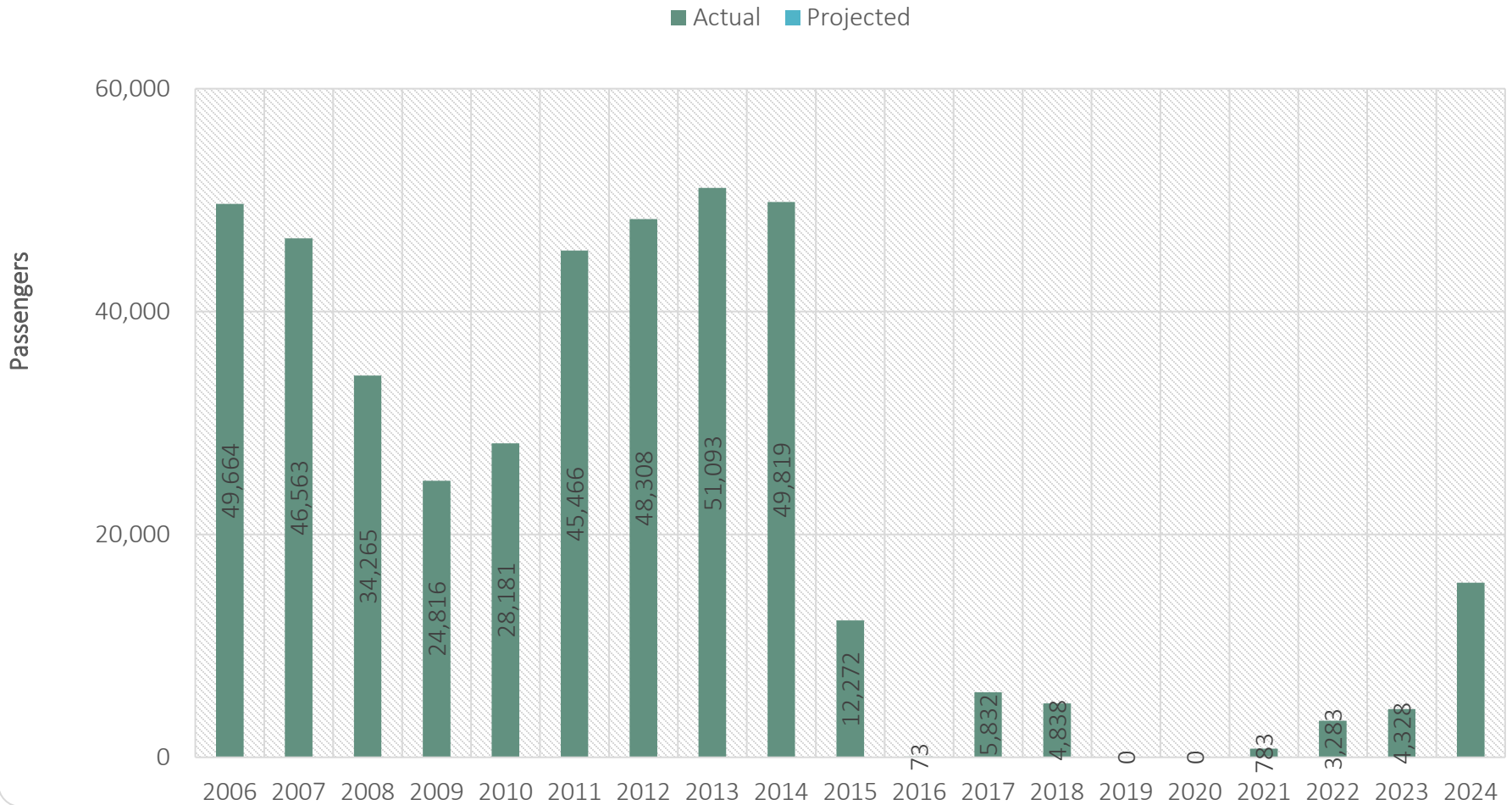


# Monthly Enplanements



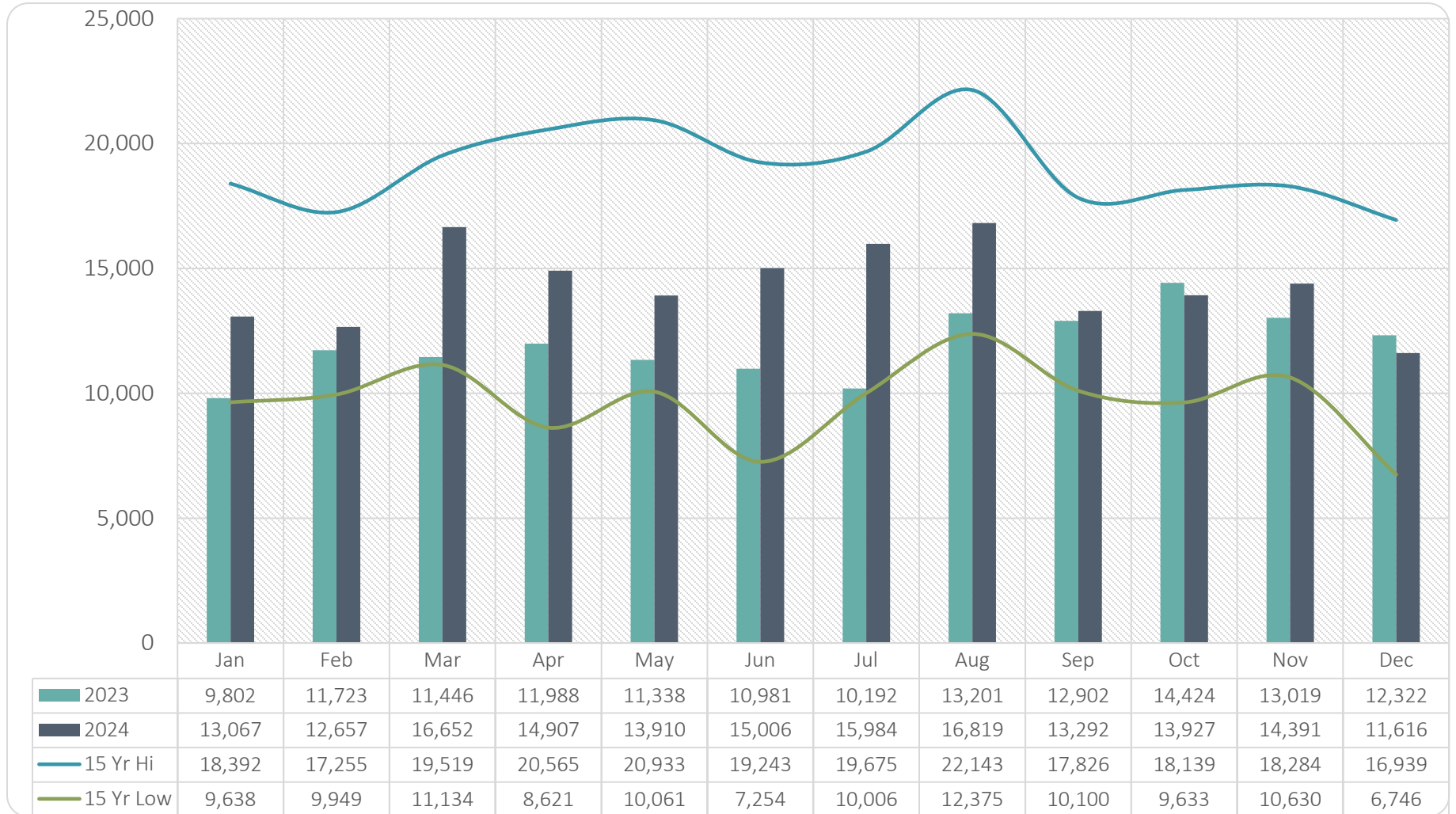


# Annual Enplanements



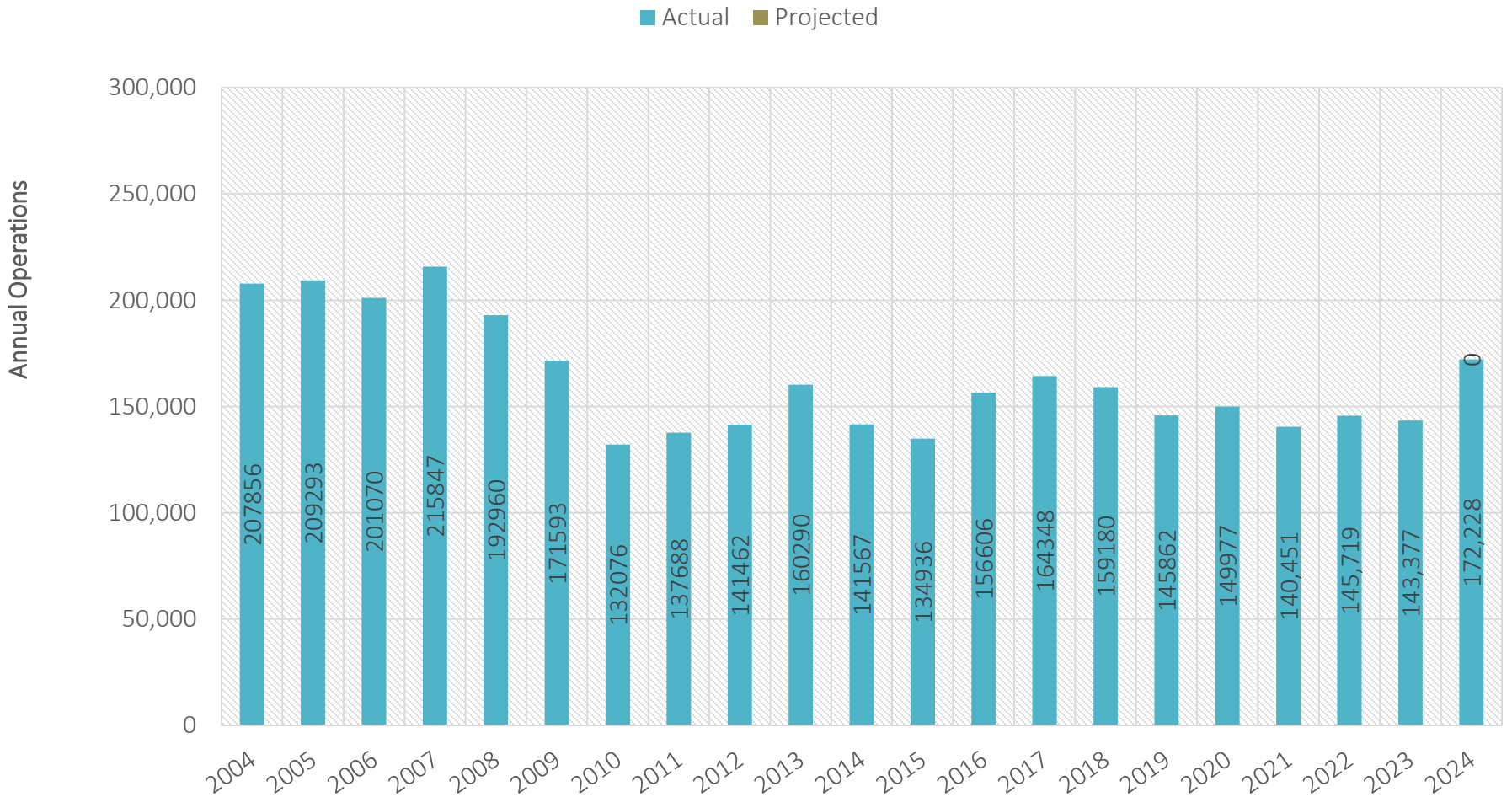


# Monthly Take-Off & Landing Count



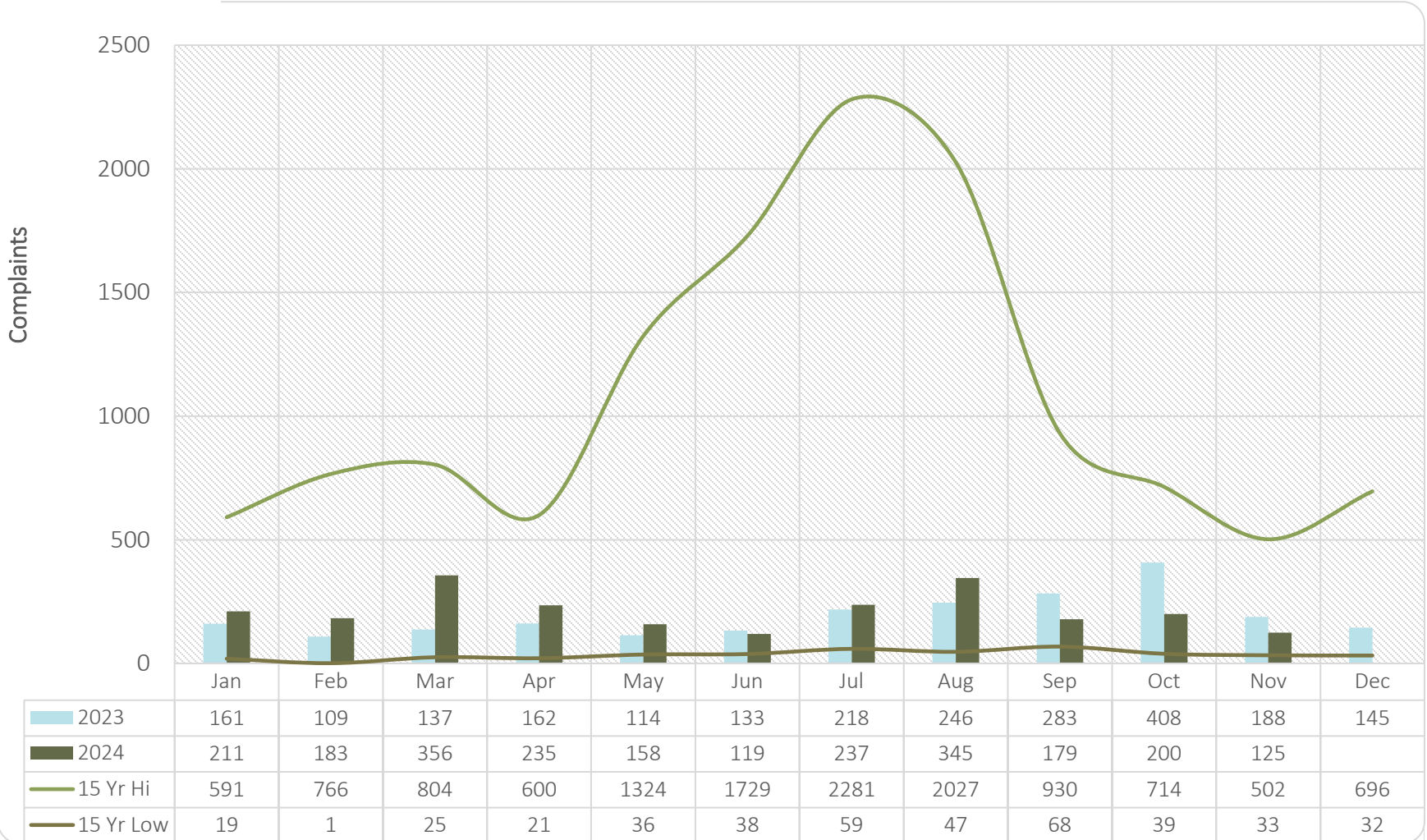


# Annual Take-Off & Landing Count



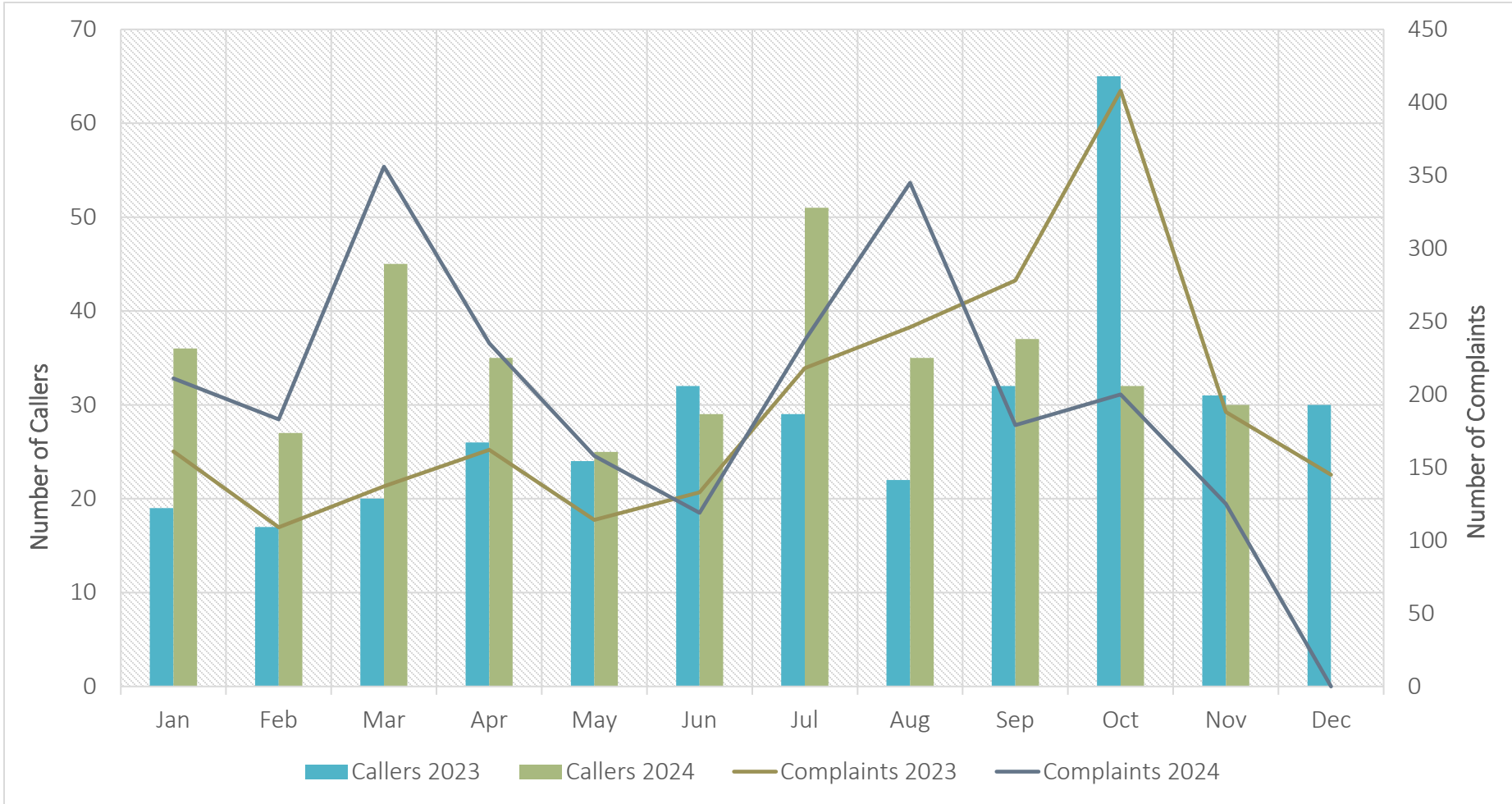


# Total Monthly Complaints





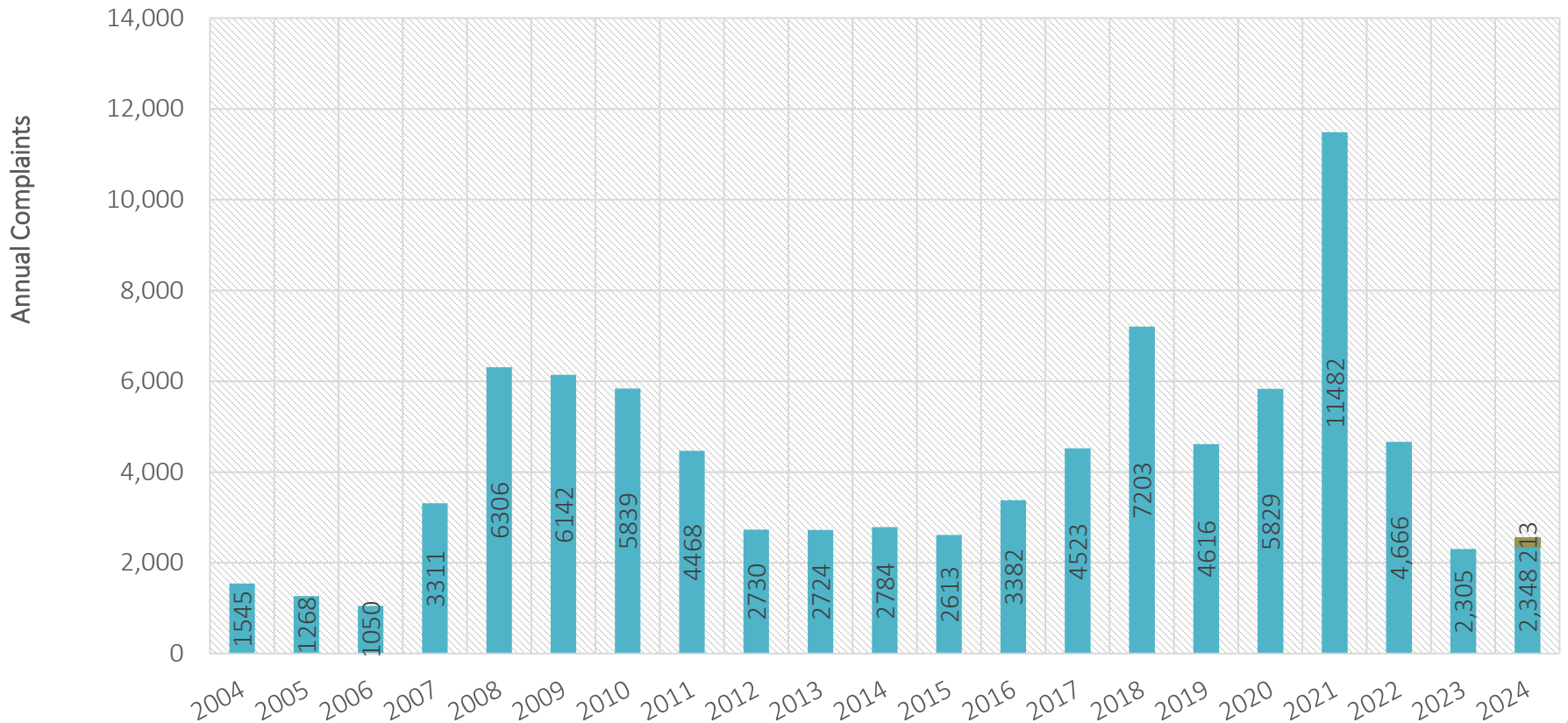
# Callers & Complaints





# Annual Complaints

Actual Projected







# Complaints by Quadrant

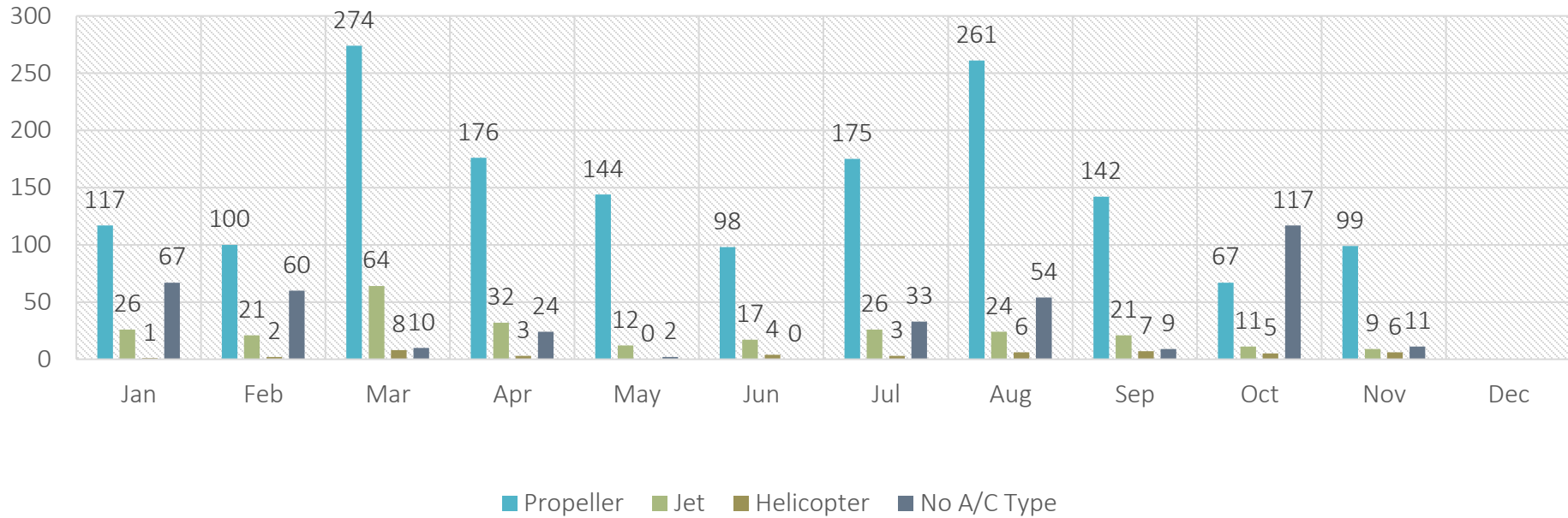
	Total Callers	Total Complaints	Filtered* Complaints
NW	8	60	12
SW	10	30	30
SE	8	15	15
NE	4	20	20
Total	30	125	77

43% of complaints were from 3 callers.

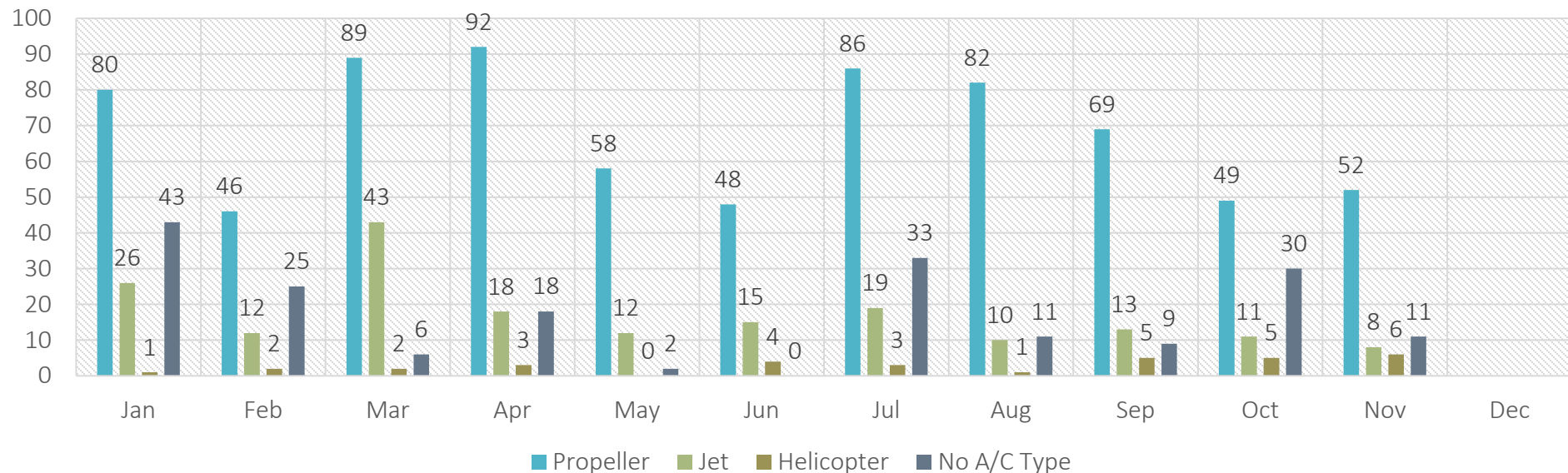
\*In the filtered data set, the top 3 caller's complaints were reduced to the average number of complaints reported by the other callers.

\*\* 0 complaints from 0 caller was not included. \*\*

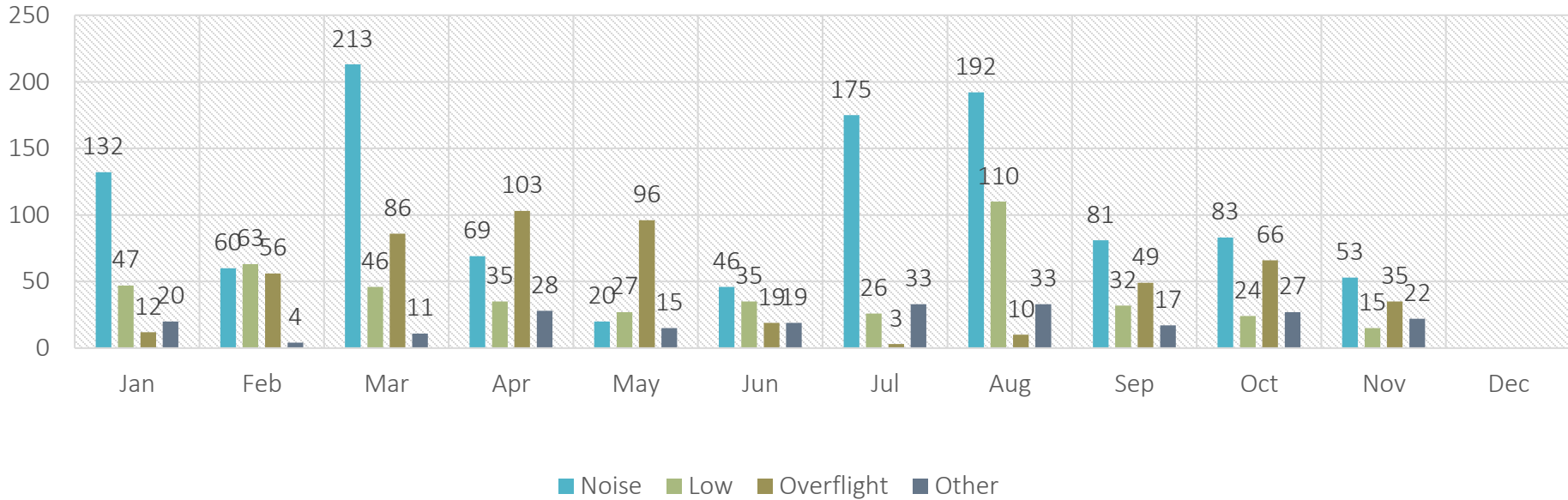
## Complaints by Aircraft Type - All Data



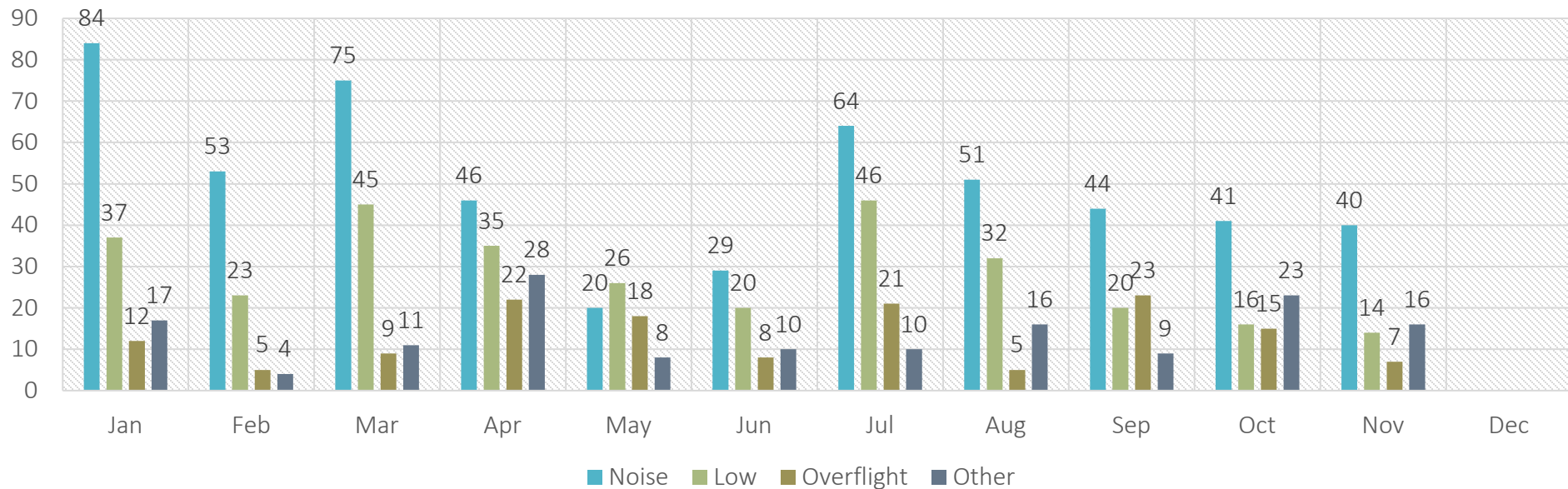
## Complaints by Aircraft Type - Filtered Data



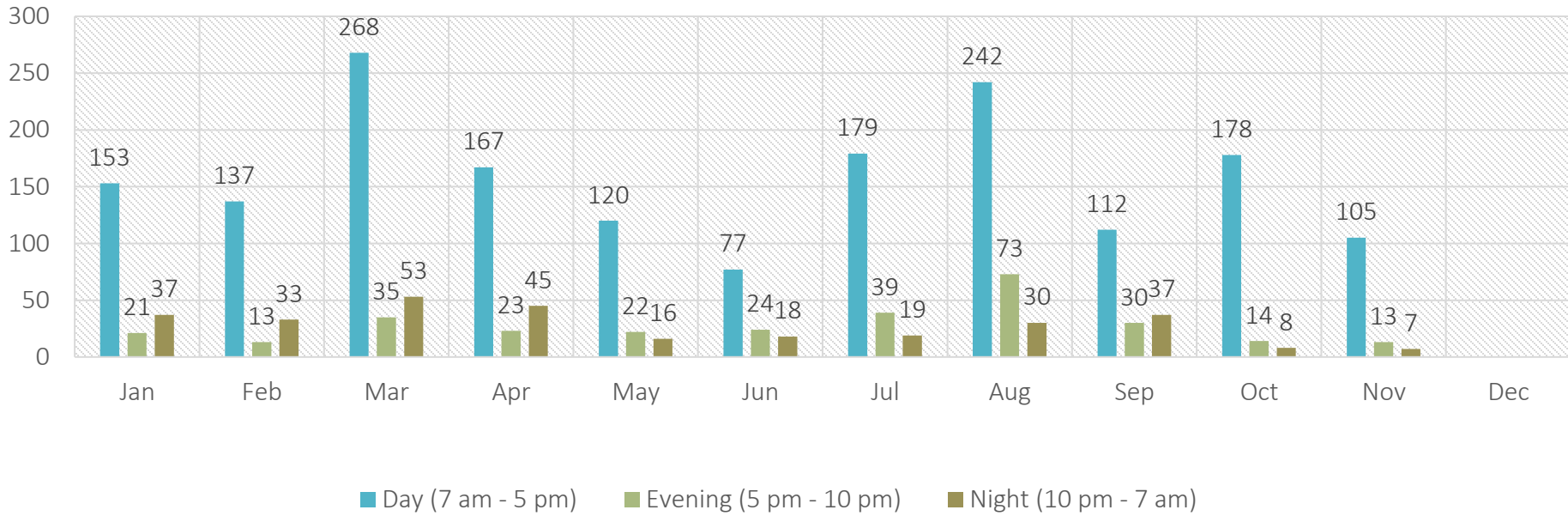
## Complaints by Category - All Data



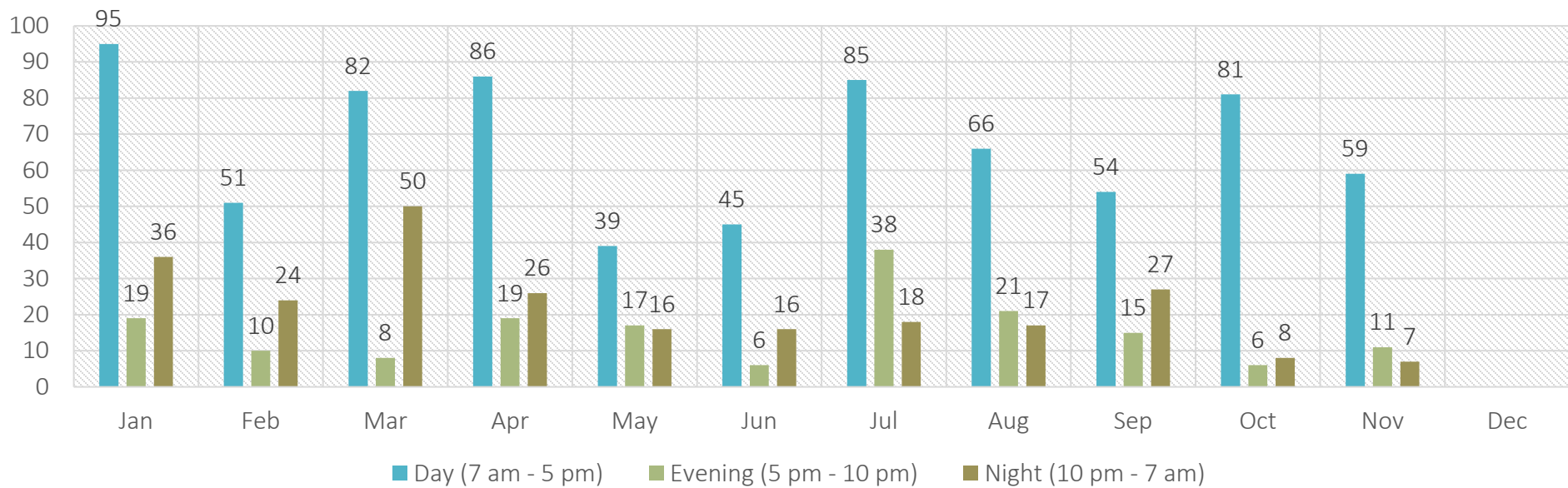
## Complaints by Category - Filtered Data



# Complaints by Time of Day - All Data



# Complaints by Time of Day - Filtered Data





# Flights During Voluntary Quiet Hours

Jets 10:00pm-7:00am, Props 12:00am-6:00am



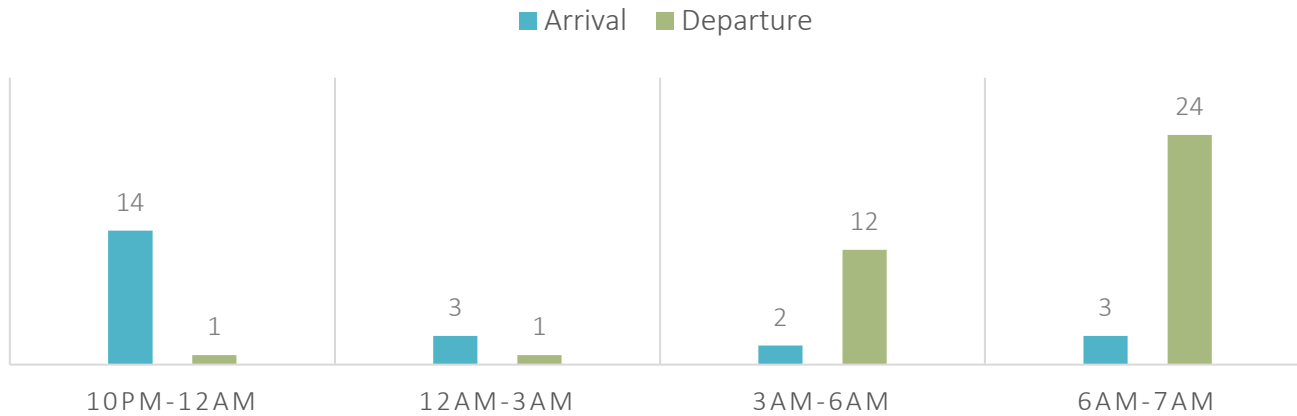
■ Jet ■ Propeller



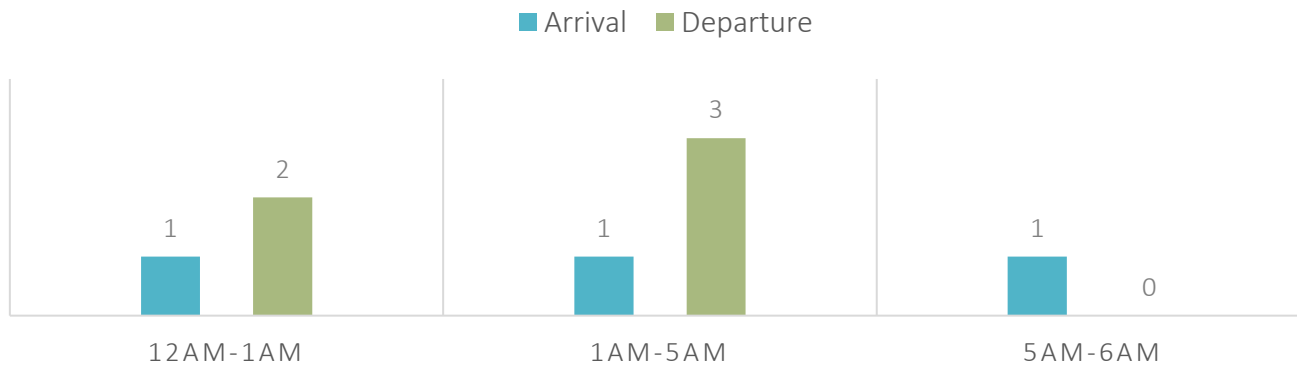
# Flights During Voluntary Quiet Hours Breakdown

Jets 10:00pm-7:00am, Props 12:00am-6:00am

DECEMBER QUIET HOURS: JETS (60)

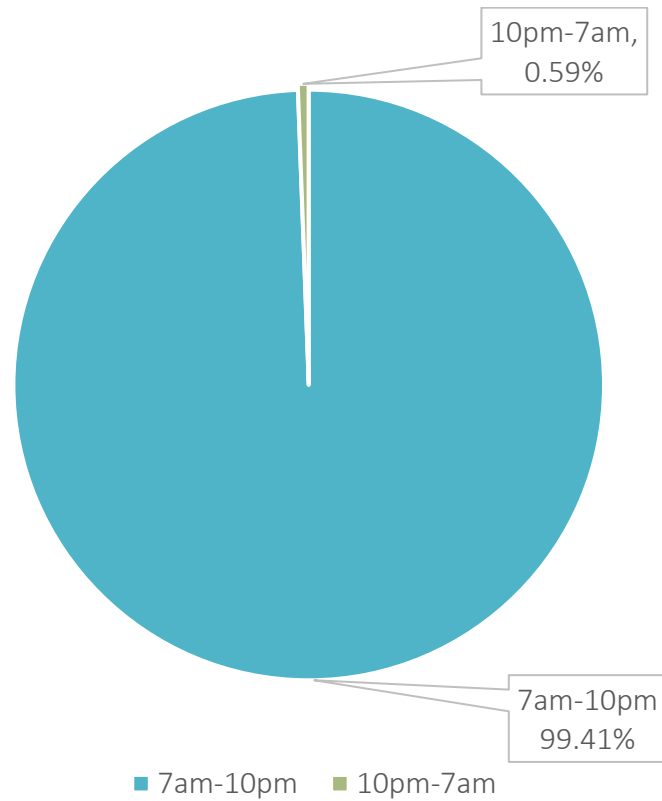


DECEMBER QUIET HOURS: PROPS (8)



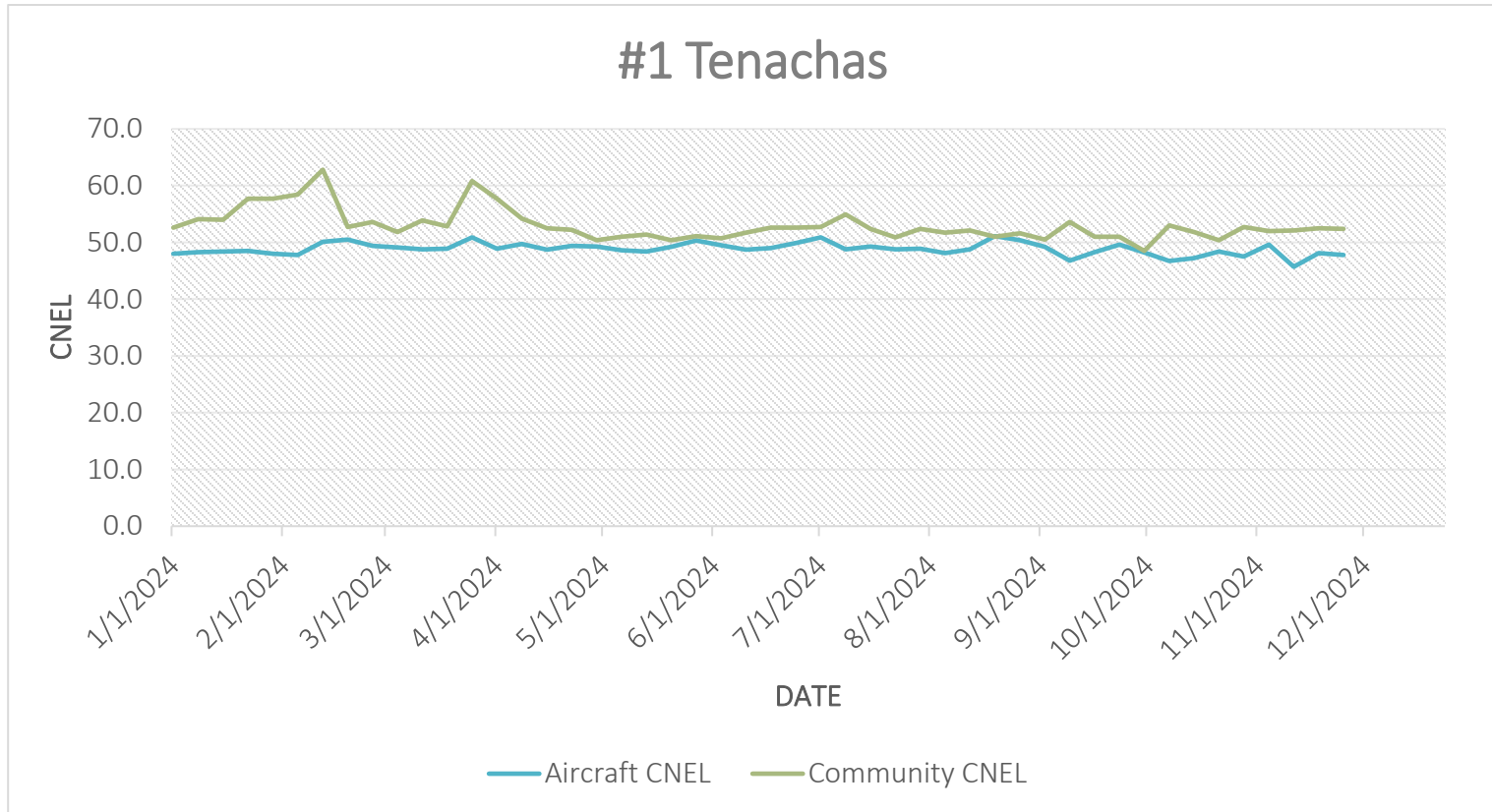


# Daytime Operations vs Quiet Hours Operations





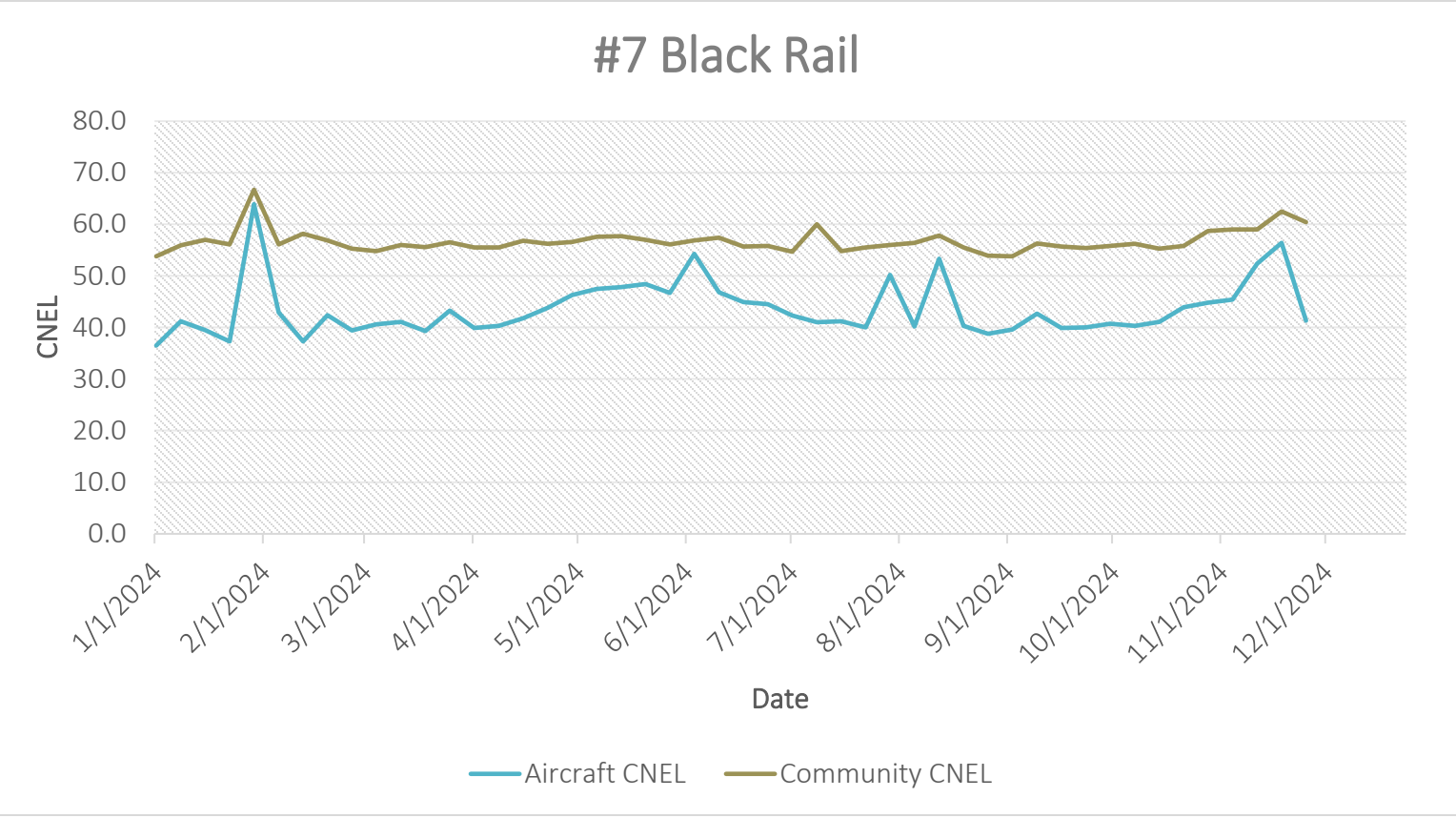
# ANNUAL REVIEW OF NOISE MIC DATA





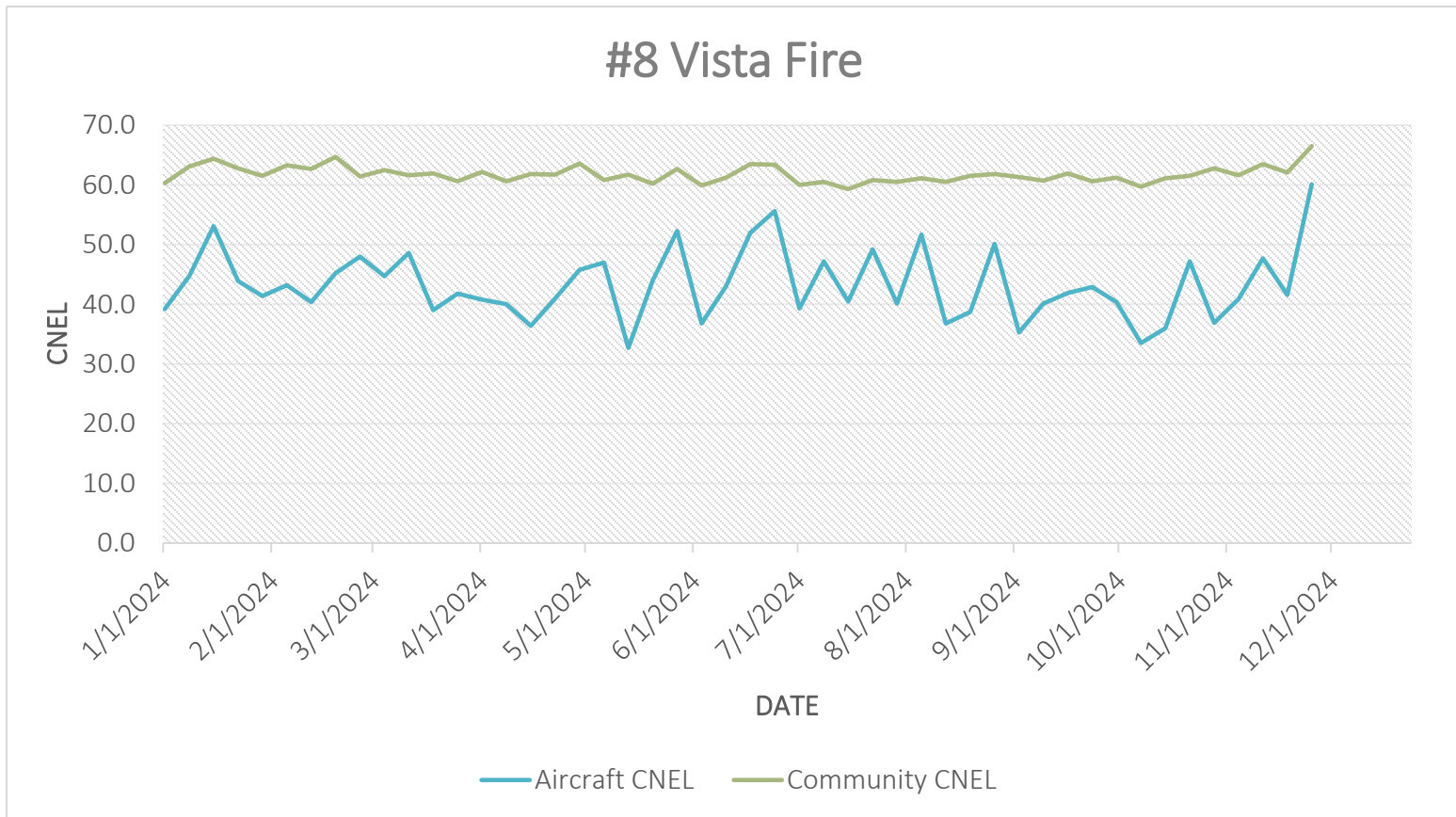


# ANNUAL REVIEW OF NOISE MIC DATA



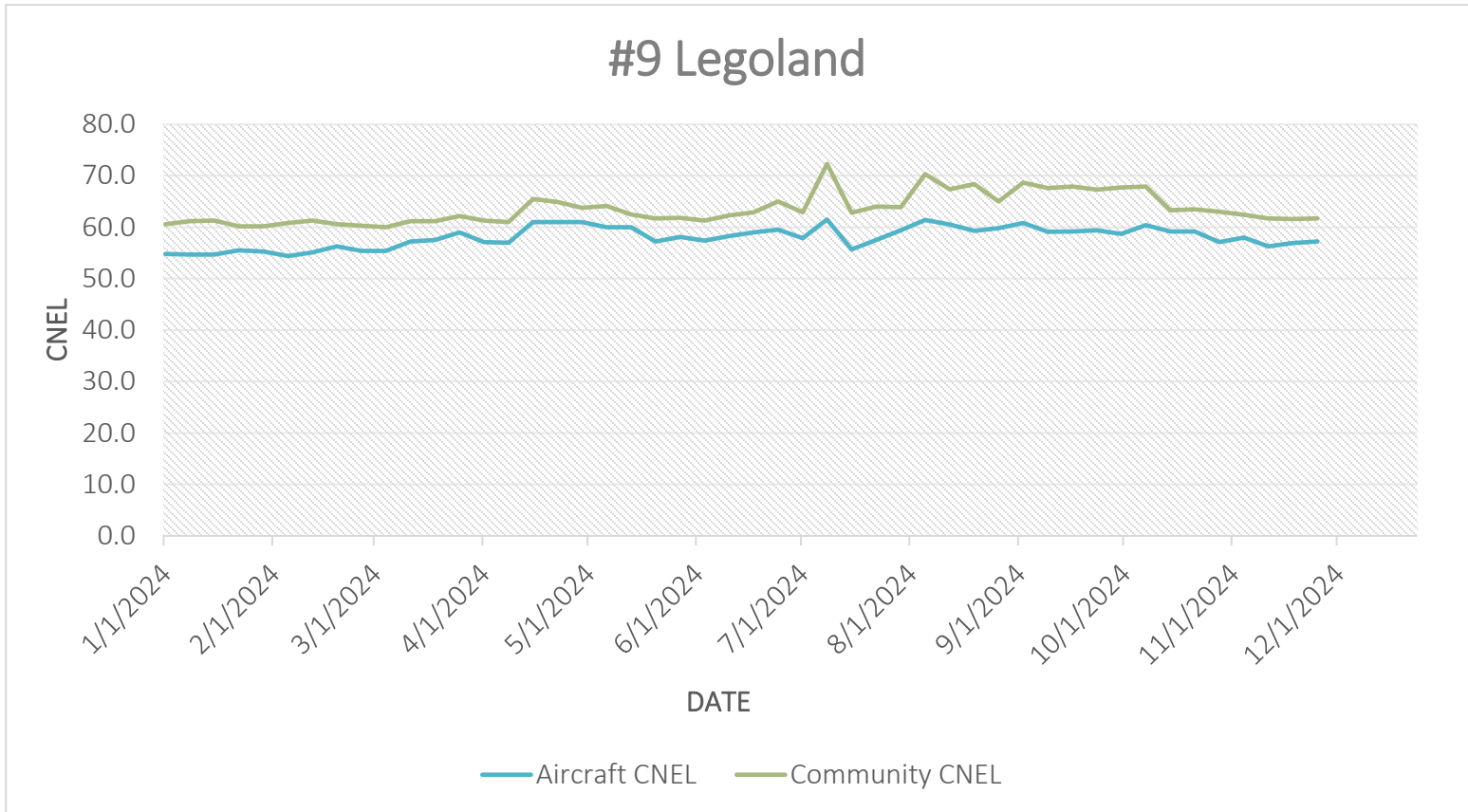


# ANNUAL REVIEW OF NOISE MIC DATA





# ANNUAL REVIEW OF NOISE MIC DATA



# December 2024



Questions or Comments?