

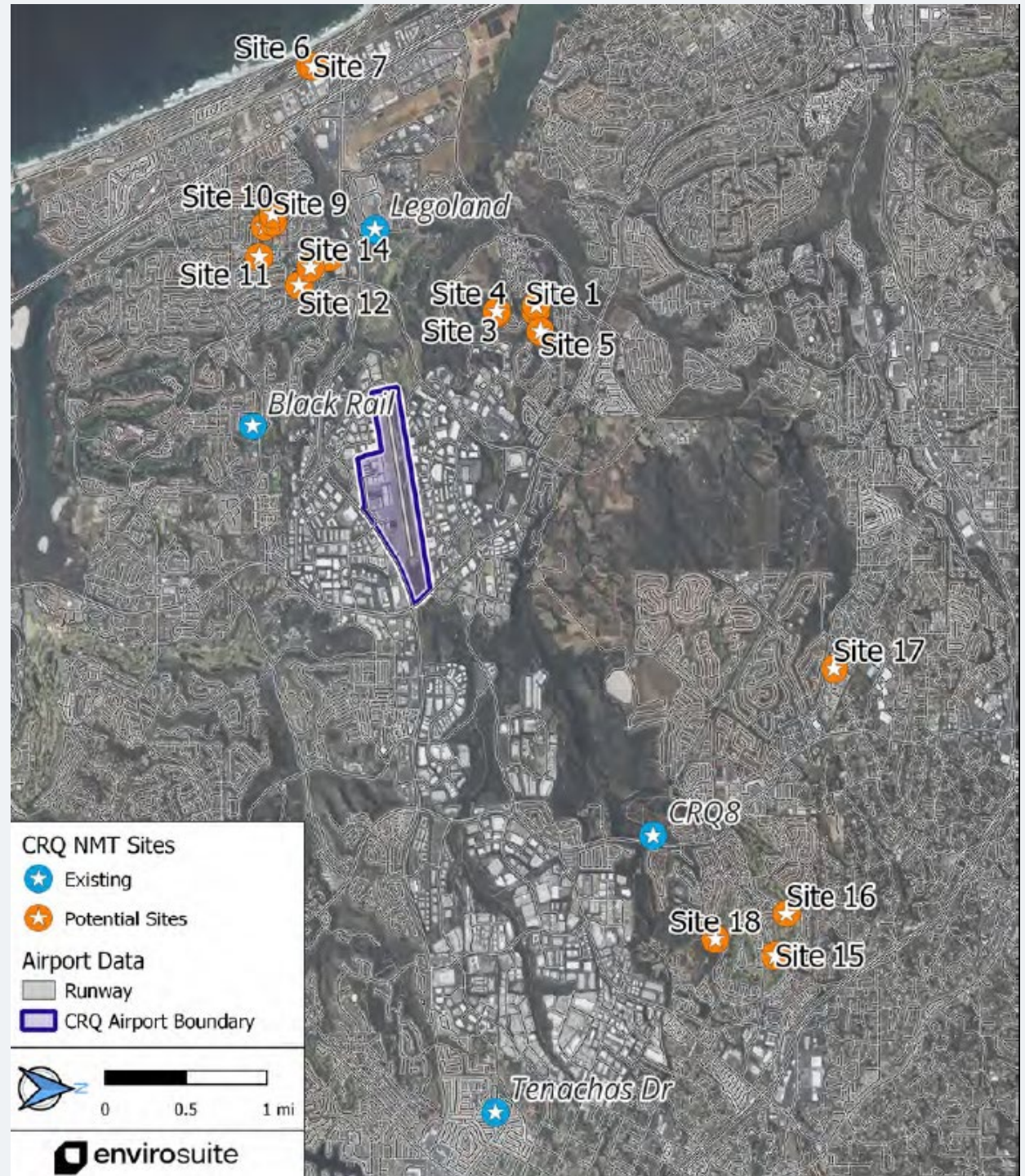


County of San Diego

# McCLELLAN-PALOMAR AIRPORT

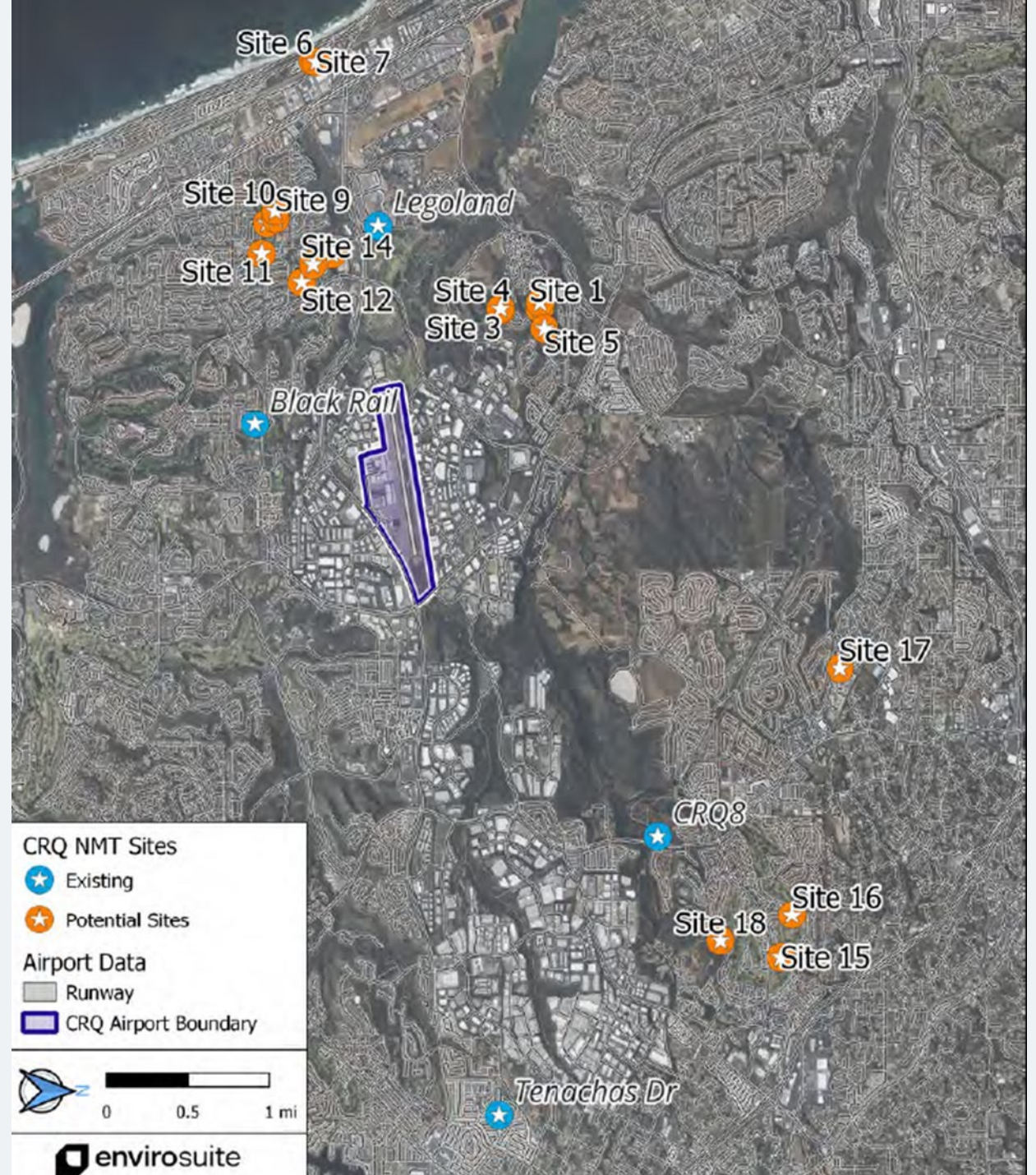


# Agenda Item 8 – New Noise Monitor Update



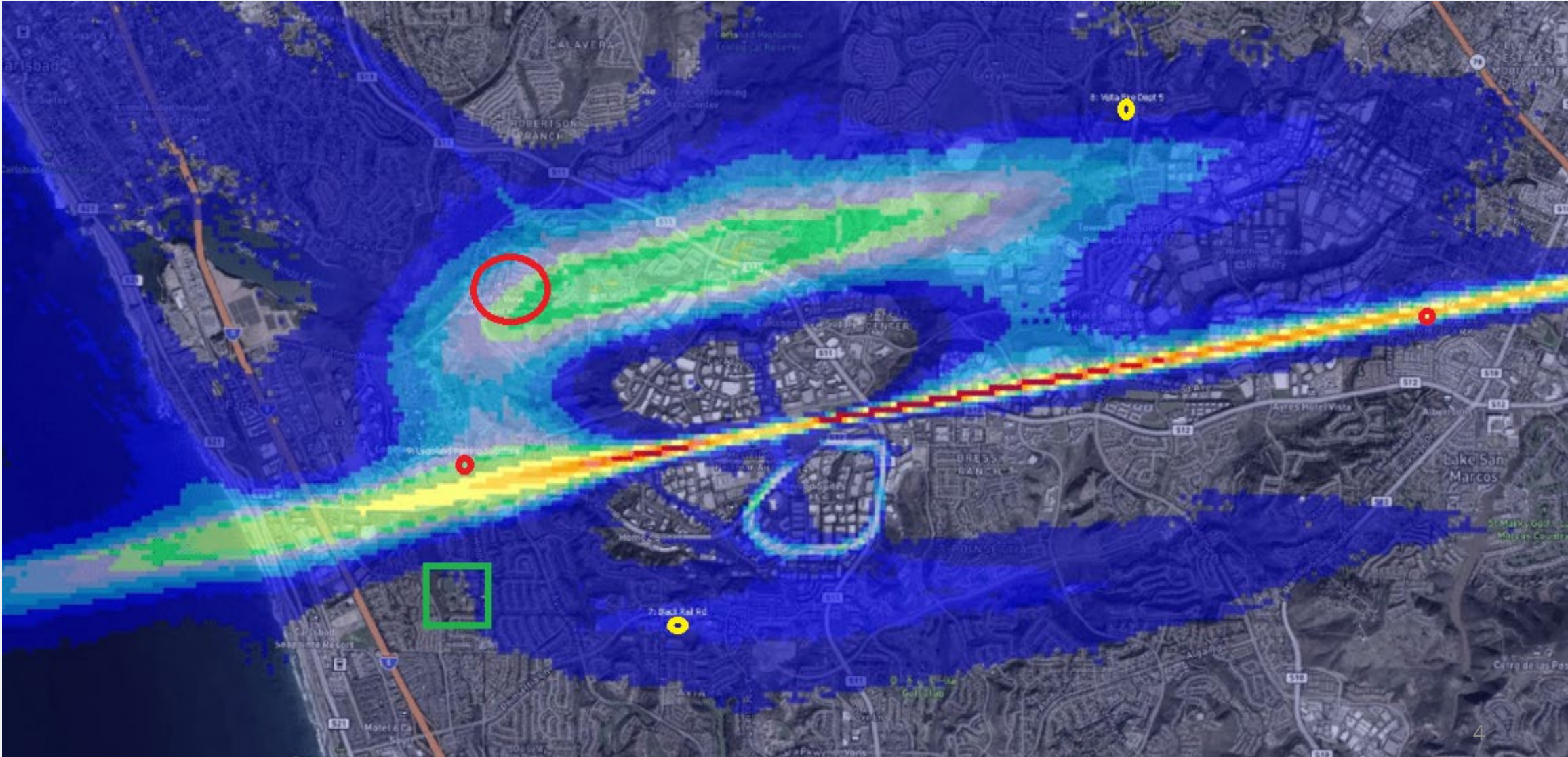


- The Airport received input from the community regarding 31 potential locations to site the New NMT
- Envirosuite performed a Noise Monitoring Terminal (NMT) Site Survey Report
- The report looked at the viability of 18 possible locations located in the Cities of Carlsbad, Vista and Oceanside.
- Site 1 or 2 has been chosen for site placement of NMT#1
- Placement of NMT's #2 has not been decided at this point.





# Track Density Map





# QUESTIONS on Item 8



# Agenda Item 9 – Update To DASHBOARD


The screenshot shows a web dashboard for the County of San Diego. At the top left is the County of San Diego logo. To its right are navigation links: Home, Operation, Noise, and Complaint. Below the navigation is a large banner image featuring a close-up of a circular structure and an airplane in flight. The banner text reads: "Noise & operation reports" and "My airport continuously monitors aircraft noise and operations. Interactive reports are published monthly on this website." Below the banner are three main content cards: "Operation report" with a bar chart icon, "Noise report" with a waveform icon, and "Complaint report" with a speech bubble icon. Each card includes a brief description and a "View monthly report >" link. The footer contains copyright information: "© 2024 Envirosuite | Privacy | Contact" and "ANOMS Airport Metrics powered by envirosuite".

**County of San Diego** | Home | Operation | Noise | Complaint

## Noise & operation reports

My airport continuously monitors aircraft noise and operations. Interactive reports are published monthly on this website.


### Operation report



View a breakdown of last month's flights and the percentage of them that complied with operating requirements.

[View monthly report >](#)


### Noise report



A presentation of the data collected at our noise monitoring locations in the last month.

[View monthly report >](#)


### Complaint report



A breakdown of complaints received from the public last month about aircraft noise and airport operations.

[View monthly report >](#)

© 2024 Envirosuite | Privacy | Contact

ANOMS Airport Metrics powered by  envirosuite

# UPDATE ON DASHBOARD – Operations Tab – Trend Tab



Home

Operation

Noise

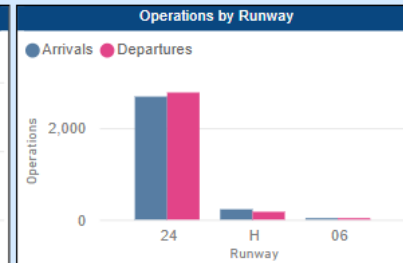
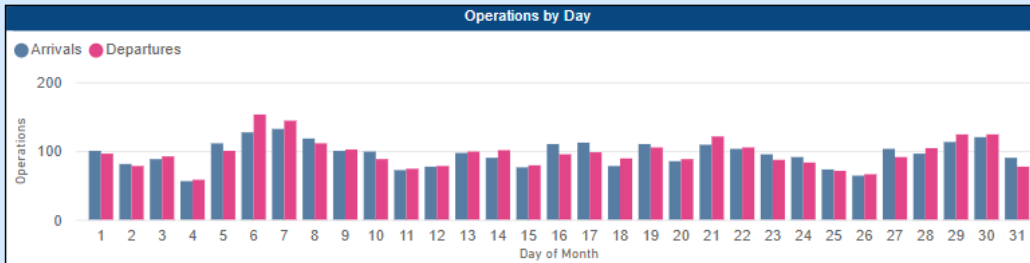
Complaint

May  
2024

## Monthly Operation Report

Select a Month :

May-24

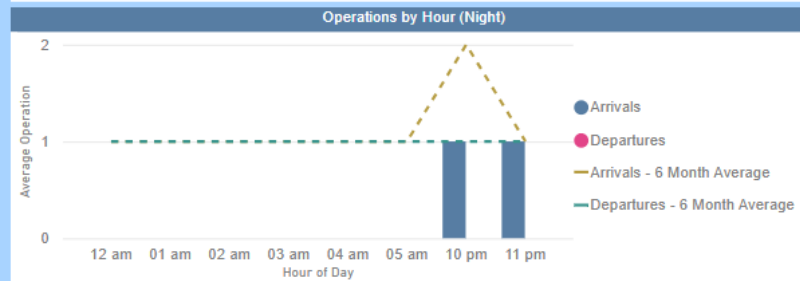
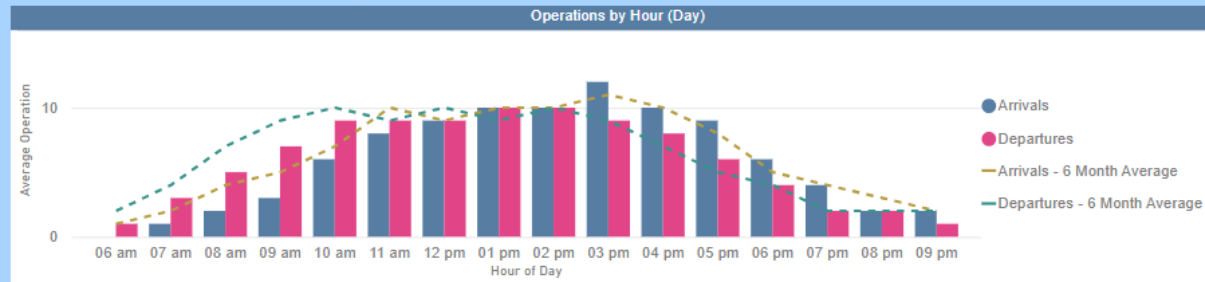


Procedure Compliance

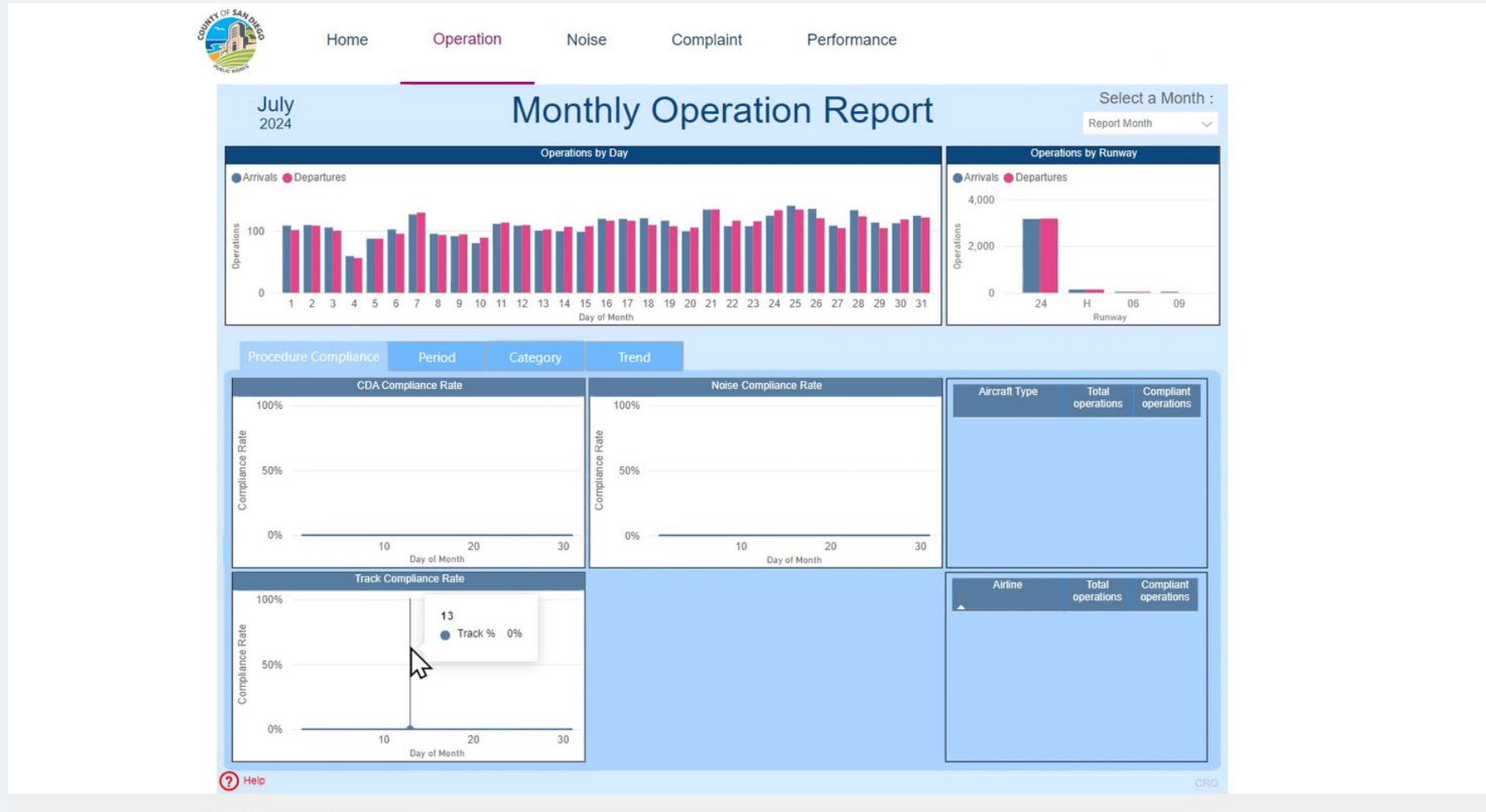
Period

Category

Trend

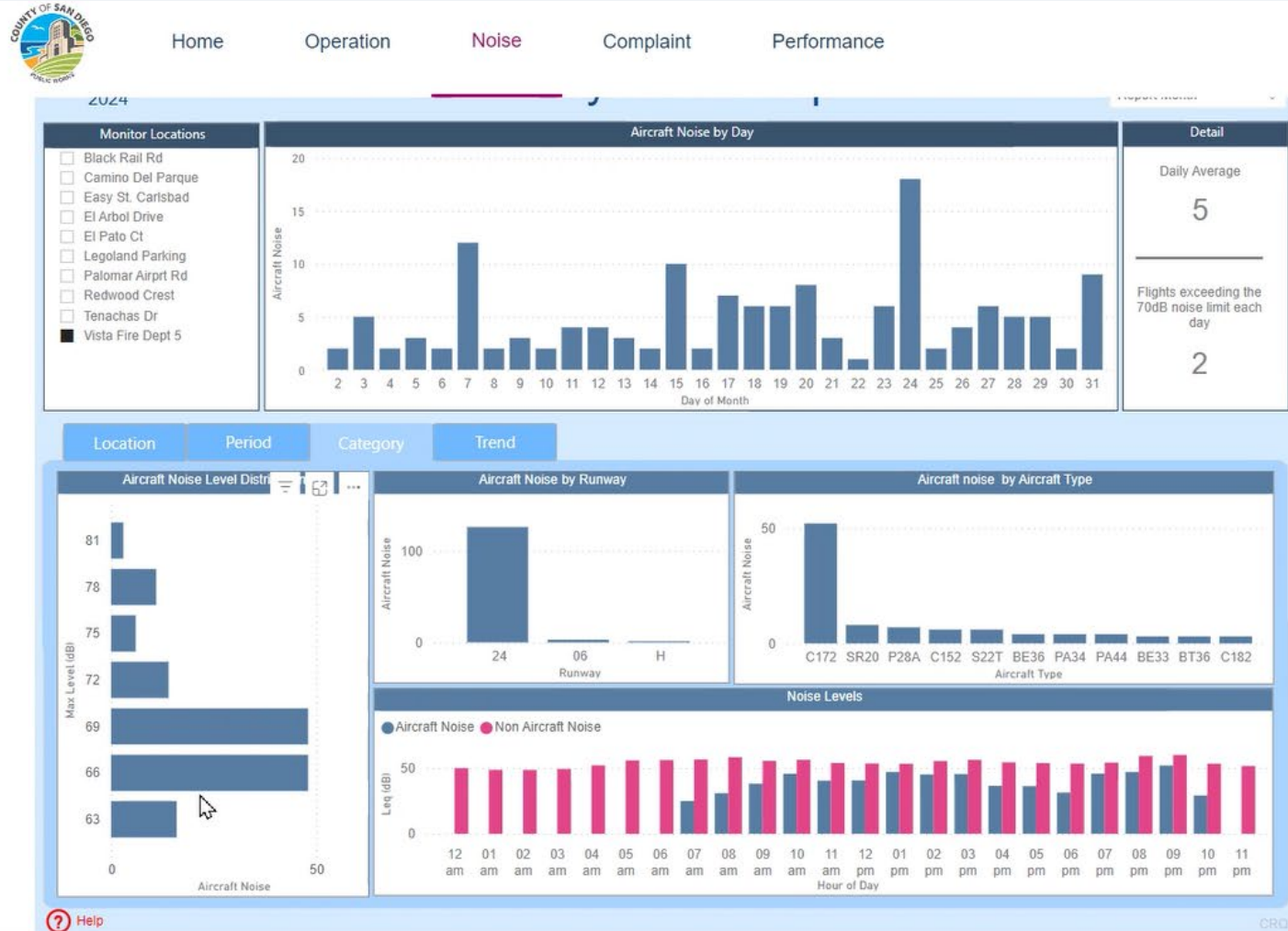


# UPDATE ON DASHBOARD – Operations Tab – Procedure Compliance Tab






# UPDATE ON DASHBOARD – Noise Tab - Category Tab



# UPDATE ON DASHBOARD – Noise Tab - Location Tab



Home
Operation
Noise
Complaint

**April 2024**

Select a Noise Monitor

## Monthly Noise Report

Select a Month

Apr-24 ▼

Monitor Locations

- Black Rail Rd
- Camino Del Parque
- El Arbol Drive
- El Pato Ct
- Legoland Parking
- Palomar Airprt Rd
- Redwood Crest
- Tenachas Dr
- Vista Fire Dept 5

Aircraft Noise by Day

Day	Count
1	250
2	220
3	250
4	250
5	150
6	240
7	220
8	320
9	340
10	280
11	230
12	180
13	170
14	170
15	290
16	310
17	340
18	270
19	280
20	160
21	140
22	140
23	270
24	330
25	330
26	290
27	260
28	240
29	330
30	260

Detail

Daily Average

251

---

Flights exceeding the 70dB noise limit each day

171

Location
Period
Category
Trend

Total Noise by Class

7,531

Aircraft

---

4,648

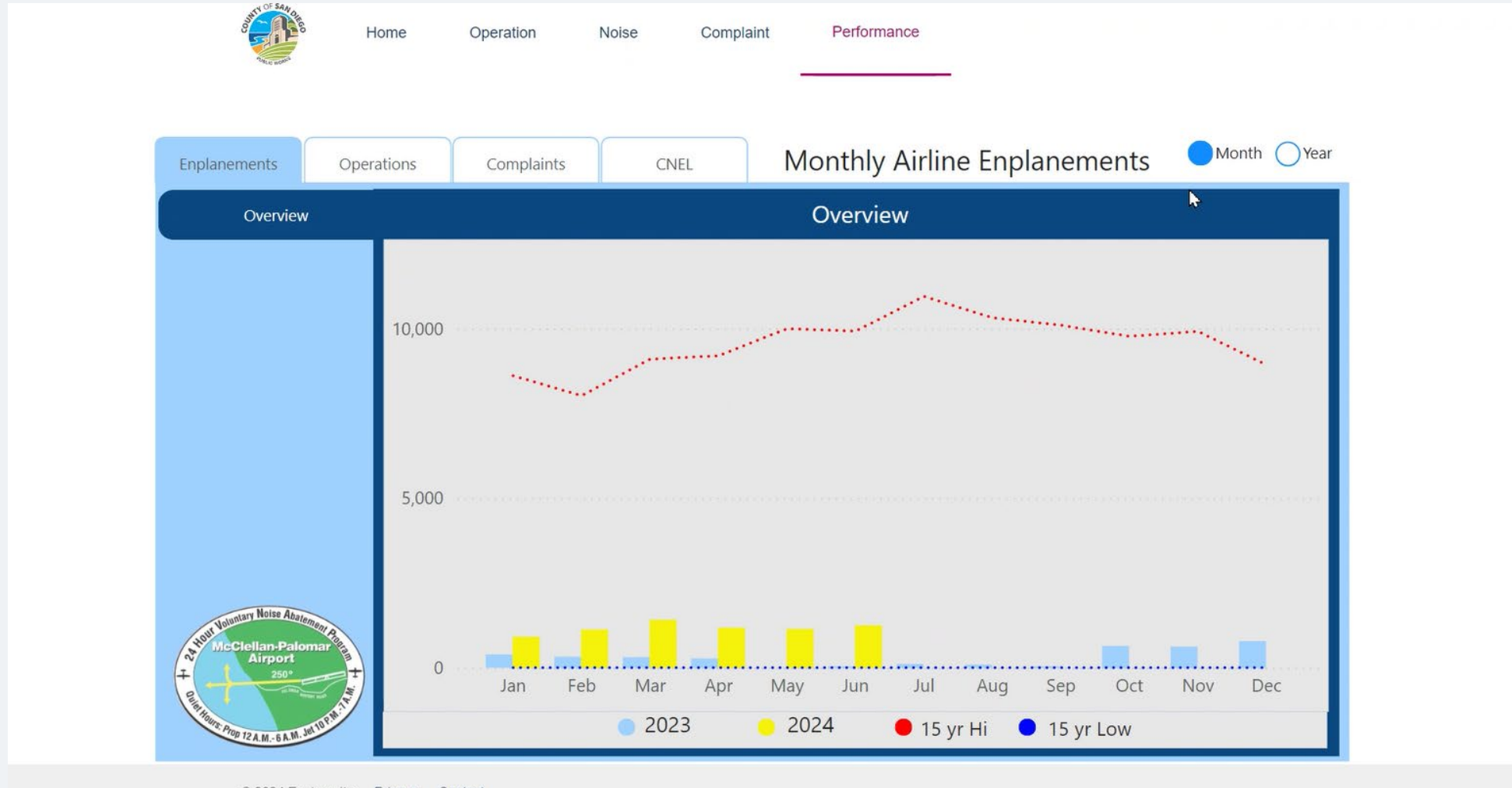
Community



# UPDATE ON DASHBOARD – Complaint Tab – Period Tab

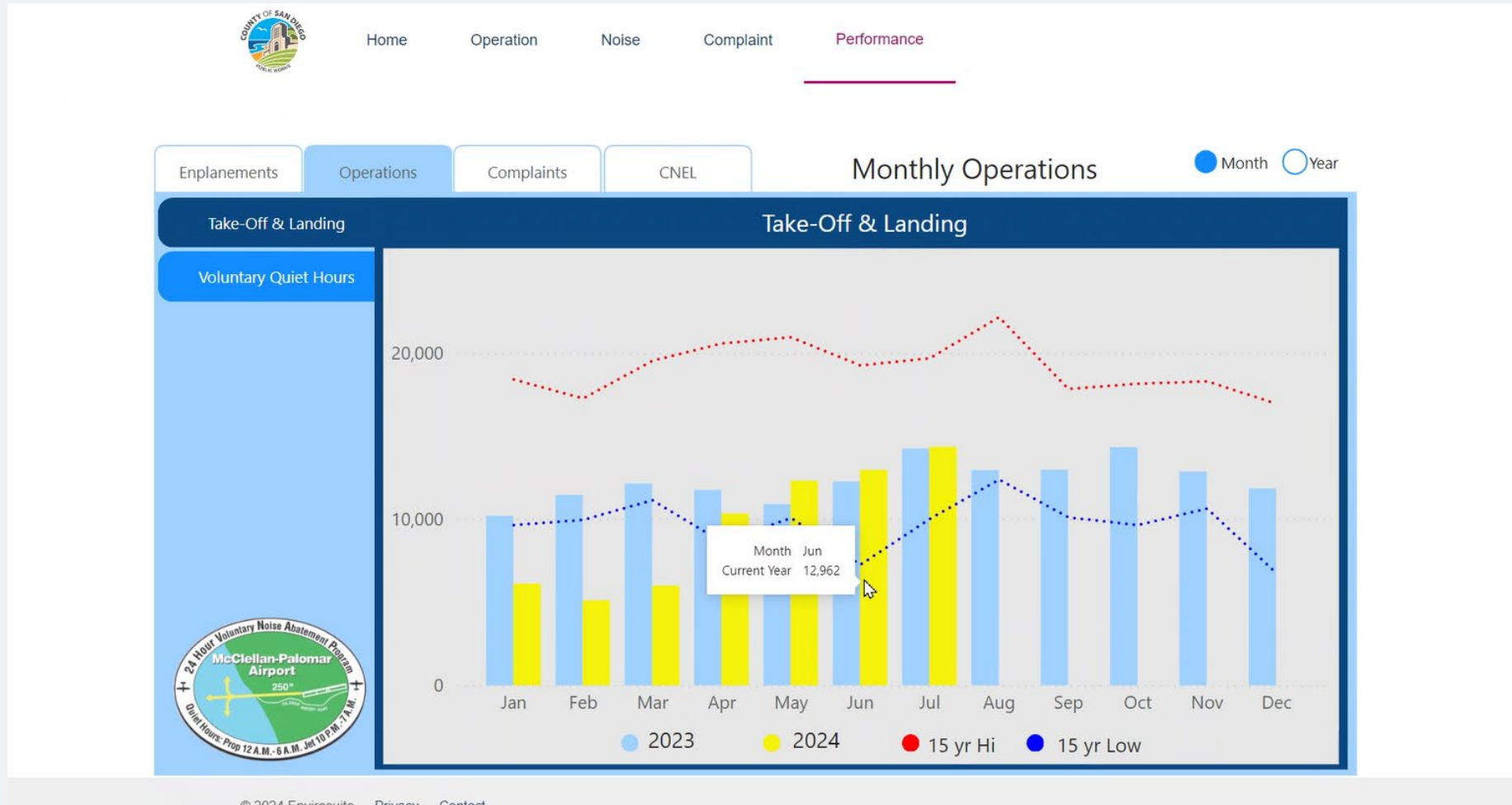


# UPDATE ON DASHBOARD – Performance Tab – Enplanement Tab





# UPDATE ON DASHBOARD – Performance Tab – Operations Tab



# Questions on Agenda Item 9

