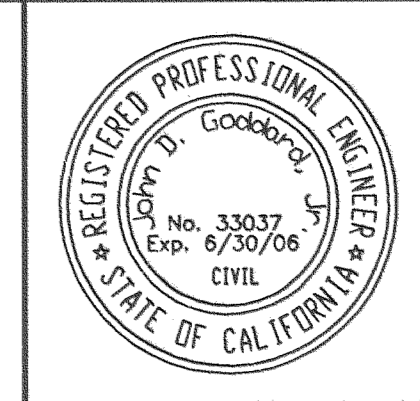


-1 0 1 2 3 4 5 6 7 8 9 10

FOR REDUCED PLANS
ORIGINAL SCALE IS IN INCHES

COUNTY OF SAN DIEGO, CALIFORNIA
DEPARTMENT OF PUBLIC WORKS



PLANS	BY	DATE
DESIGNED	BRENDAN HASTIE	
CHECKED	CARL HEWINGS	
DELINEATED		

RICK ENGINEERING
5620 FRIARS RD.
SAN DIEGO, CA. 92110
619-291-0707

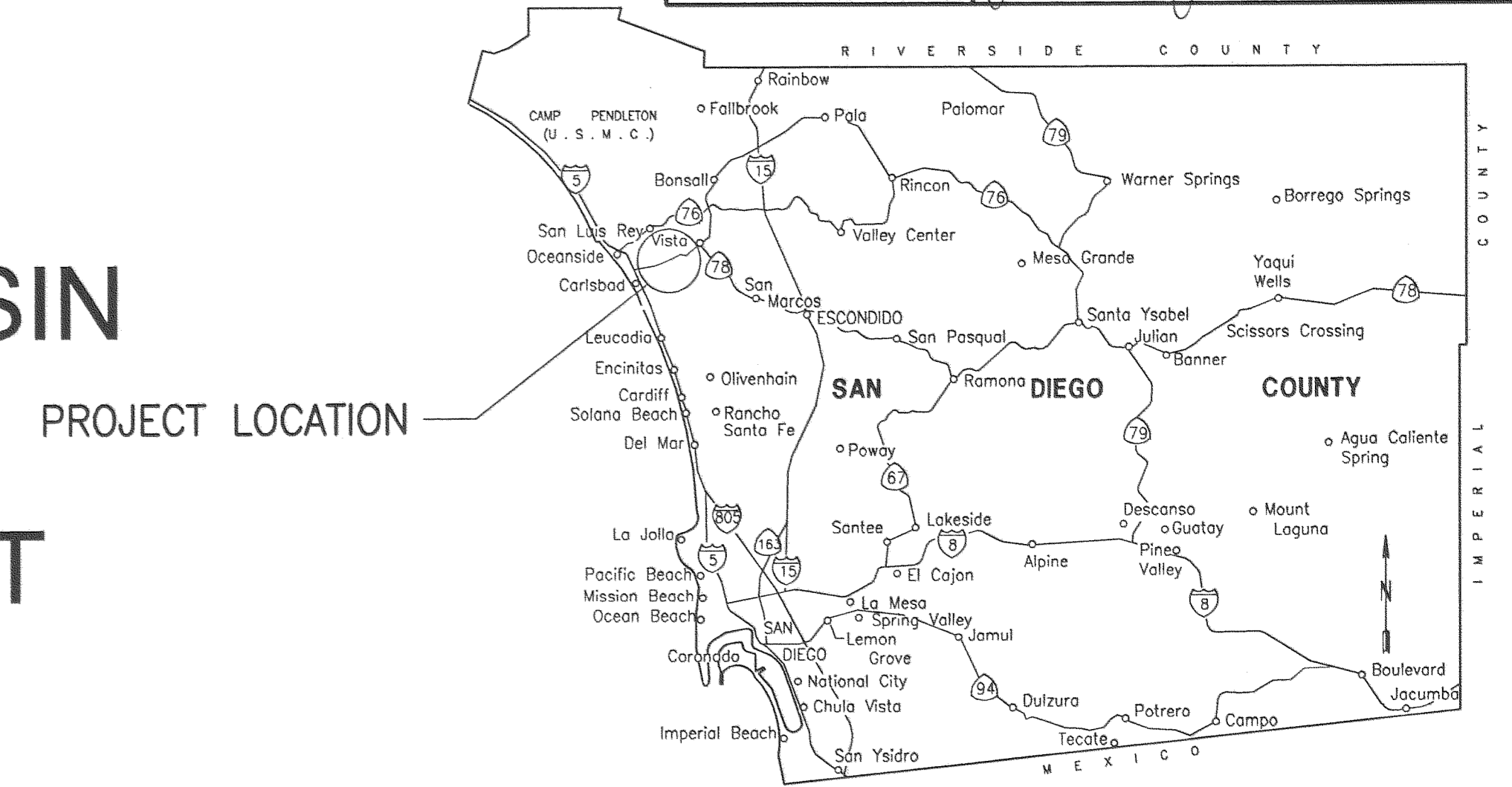
[Signature]
REGISTERED CIVIL ENGINEER

4-17-06
DATE

INDEX OF SHEETS

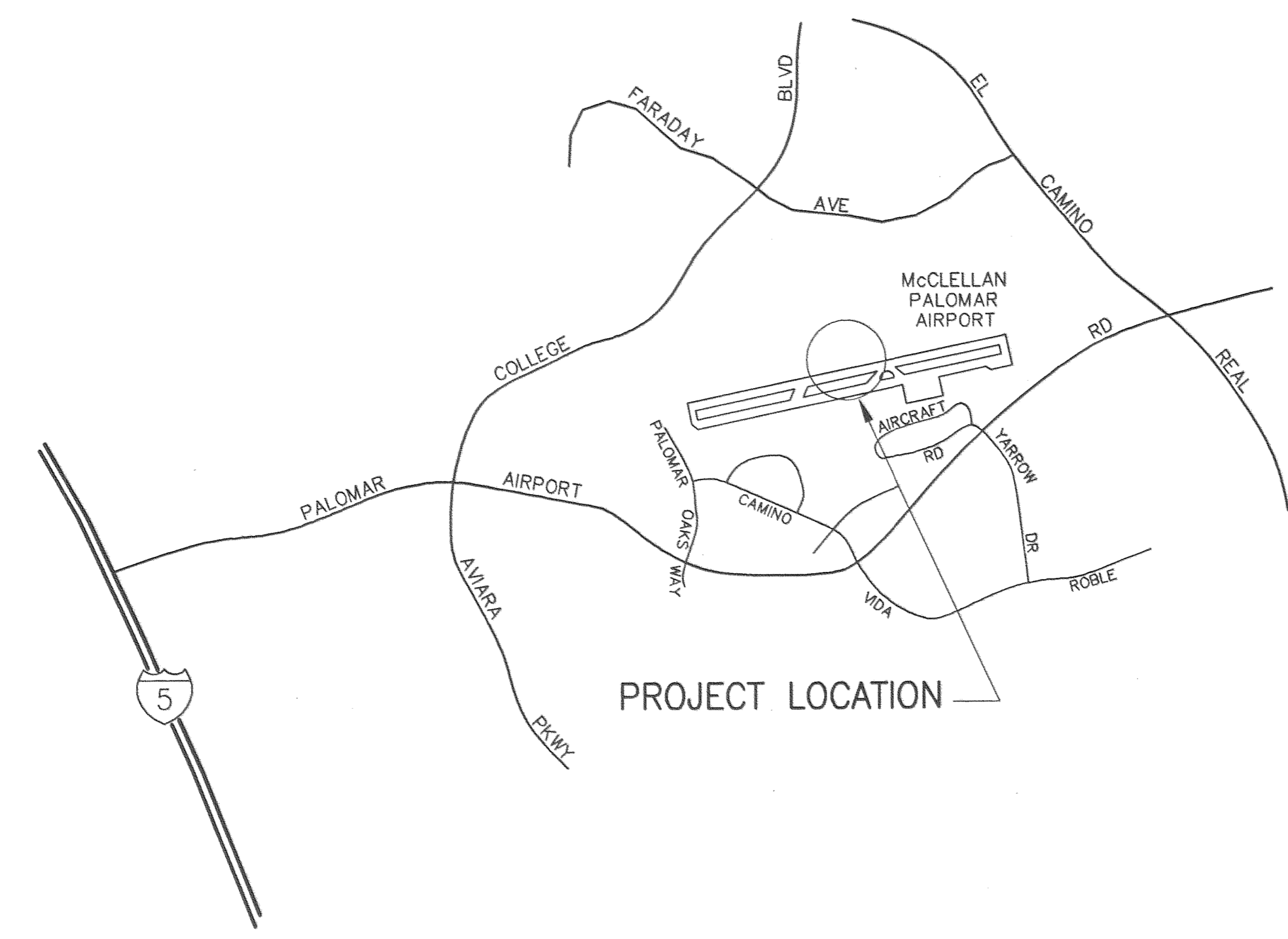
No.	Description
1	TITLE SHEET
2	TYPICAL SECTIONS/ABBREVIATIONS
3	EX. CONDITIONS/CONSTRAINTS
4	PLAN & PROFILE
5	DETENTION VAULT DETAILS / NOTES
6	DETENTION VAULT DETAILS / NOTES
7	DETENTION VAULT DETAILS / NOTES
8	HYDRODYNAMIC SEPARATOR DETAILS / NOTES

PLANS FOR
CONSTRUCTION OF
UNDERGROUND DETENTION BASIN
AT
McCLELLAN-PALOMAR AIRPORT
In The Vicinity of Carlsbad



REGIONAL STANDARD DRAWINGS, April 2003

- D-9
- D-11A
- D-11B
- D-60
- D-61
- M-1
- M-3
- M-4
- S-4
- S-8



VICINITY MAP
NO SCALE

Basis of Bearings
Coordinate System Zone 6
NAD 83
California

GENERAL NOTES:

ATTENTION IS DIRECTED TO THE POSSIBLE EXISTENCE OF UNDERGROUND UTILITY FACILITIES NOT KNOWN OR IN A LOCATION DIFFERENT FROM THAT WHICH IS SHOWN ON THE PLANS OR IN THE SPECIAL PROVISIONS. THE CONTRACTOR SHALL TAKE STEPS TO ASCERTAIN THE EXACT LOCATION OF ALL UNDERGROUND FACILITIES PRIOR TO PERFORMING WORK THAT MAY DAMAGE SUCH FACILITIES OR INTERFERE WITH THEIR SERVICE. FORTY-EIGHT HOURS BEFORE EXCAVATING, THE CONTRACTOR SHALL VERIFY THE LOCATION OF UNDERGROUND FACILITIES BY CONTACTING UNDERGROUND SERVICE ALERT AT TELEPHONE 1-800-422-4133.

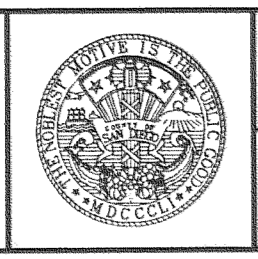
OPERATORS OF GRAVITY SEWER SYSTEMS AND CERTAIN OTHER UTILITIES, WHO ARE NOT MEMBERS OF UNDERGROUND SERVICE ALERT, MUST BE INDIVIDUALLY CONTACTED.

RECORD DRAWINGS

S.M.L. 04/28/06
SARITA LEMONS, P.E. DATE
RCE 63255 EXP 06/30/06

THESE RECORD DRAWINGS HAVE BEEN PREPARED, IN PART, BASED UPON INFORMATION FURNISHED BY OTHERS.

COUNTY OF SAN DIEGO
DEPARTMENT OF PUBLIC WORKS
5555 OVERLAND AVENUE, SAN DIEGO, CA 92123-1295



RECOMMENDED BY:	<i>M. Khoury</i>	DATE	4/20/06
	<i>[Signature]</i>	DATE	4/20/06
APPROVED BY:	<i>[Signature]</i>	DATE	4/24/06
	MOHAMAD FAKHRIDDINE, COUNTY ENGINEER		

REVISIONS	BY	APPROVED	DATE
	RLG	SML	4-06

COORDINATE INDEX	350 N. 1683 E.
CONST. COMPL.	
FIELD REVISIONS	

UNDERGROUND DETENTION BASIN AT McCLELLAN-PALOMAR AIRPORT In the Vicinity of Carlsbad	SCALE: HOR. N/A VERT. N/A
TITLE SHEET	W.A. - R.S. -
	SHEET 1 OF 8

ABBREVIATIONS

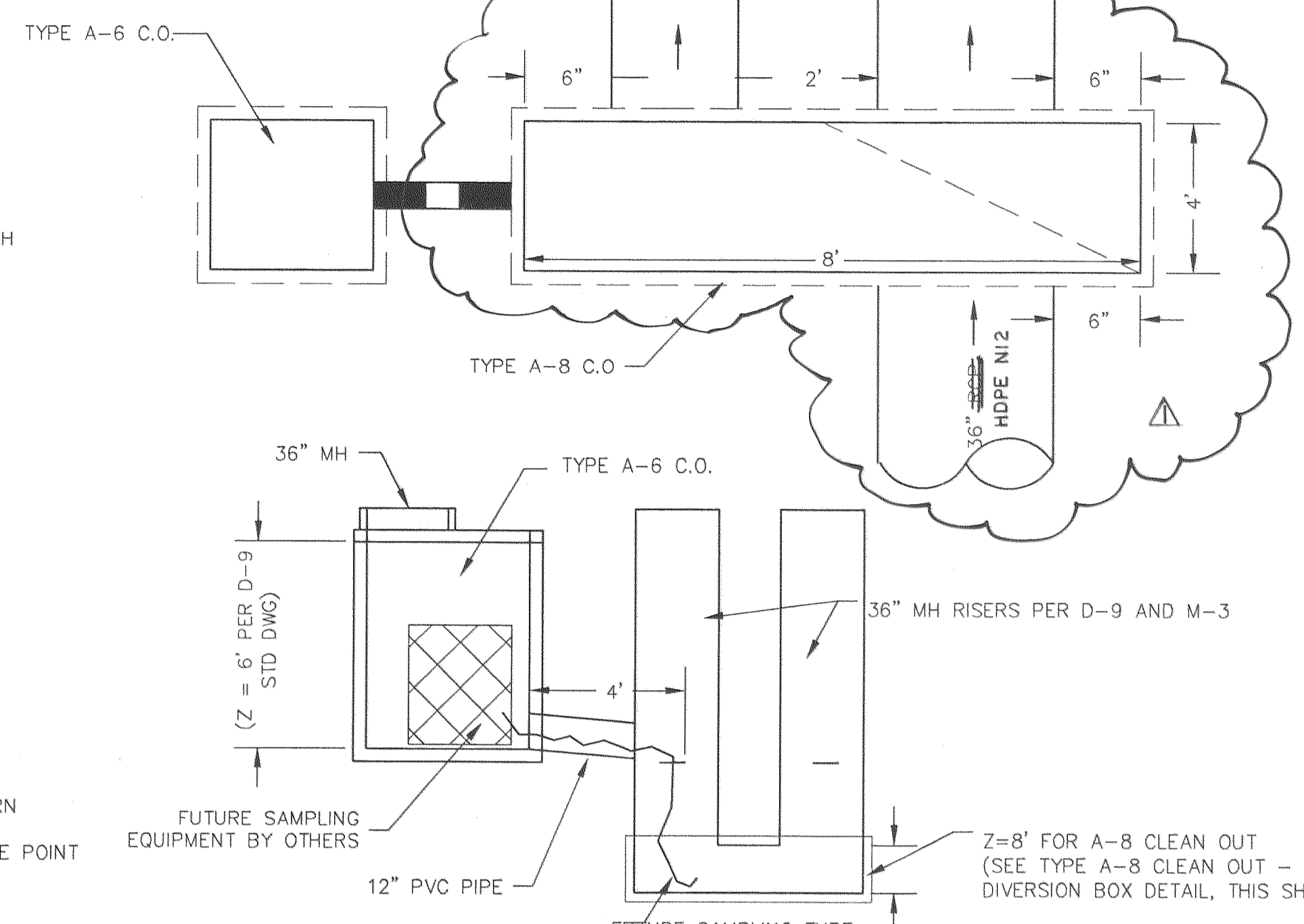
ABBREVIATION	DESCRIPTION
&	AND
AB	AGGREGATE BASE
AC	ASPHALT CONCRETE
ACP	ASBESTOS CEMENT PIPE
BC	BEGINNING OF CURVE
BVC	BEGINNING OF VERTICAL CURVE
C&G	CURB AND GUTTER
CFS	CUBIC FEET PER SECOND
CI	CAST IRON PIPE
CIP	CAST-IN-PLACE
C	CENTERLINE
CL	CLASS
CO	CLEANOUT
CONC	CONCRETE
CONST	CONSTRUCT
CONST'N	CONSTRUCTION
CSP	CORRUGATED STEEL PIPE
CSPA	CORRUGATED STEEL PIPE ARCH
CTSP	CALTRANS STANDARD PLANS
DE	DEAD END
Δ	DELTA
DRAIN	DRAINAGE
DWY	DRIVEWAY
EC	END OF CURVE
ELEV	ELEVATION
EP	EDGE OF PAVEMENT
EVC	END OF VERTICAL CURVE
EXIST	EXISTING
FG	FINISH GRADE
FH	FIRE HYDRANT
FL	FLOW LINE
HH	HANDHOLE
HWY	HIGHWAY
IE	INVERT ELEVATION
L	ARC LENGTH
LF	LINEAR FOOT
LT	LEFT
MH	MANHOLE
MIN	MINIMUM
NAD	NORTH AMERICAN DATUM
OG	ORIGINAL GROUND
OHD	OVERHEAD
PCC	PORTLAND CEMENT CONCRETE
PCR	POINT OF CURB/CURVE RETURN
PED	PEDESTRIAN
PI	POINT OF INTERSECTION/ANGLE POINT
PL	PLACE
P	PROPERTY LINE
PROF	PROFILE
PVI	POINT OF VERTICAL INTERSECTION
PVMT	PAVEMENT
Q	RATE OF FLOW
R	RADIUS
RCB	REINFORCED CONCRETE BOX
RCP	REINFORCED CONCRETE PIPE
RD	ROAD
RS	ROAD SURVEY
RSD	REGIONAL STANDARD DRAWING
RT	RIGHT
R/W	RIGHT-OF-WAY
SD	STORM DRAIN
SDDCS	SAN DIEGO COUNTY DESIGN STANDARD
S/W	SIDEWALK
S	SLOPE
ST	STREET
STA	STATION
SWR	SANITARY SEWER
T	TANGENT LENGTH
TC	TOP OF CURB
TELE	TELEPHONE
TW	TOP OF WALL
USC&GS	UNITED STATES COASTAL & GEODETIC SURVEY
VC	VERTICAL CURVE LENGTH
VCP	VITRIFIED CLAY PIPE
WTR	WATER
HDPE	HIGH DENSITY POLYETHYLENE

HORIZONTAL CONTROL & BENCHMARKS

FOR HORIZONTAL CONTROL AND BENCHMARK INFORMATION, REFER TO SHEET 4 OF 63 ON THE McCLELLAN-PALOMAR AIRPORT RUNWAY SAFETY AREA - PHASE 1 PLANS.

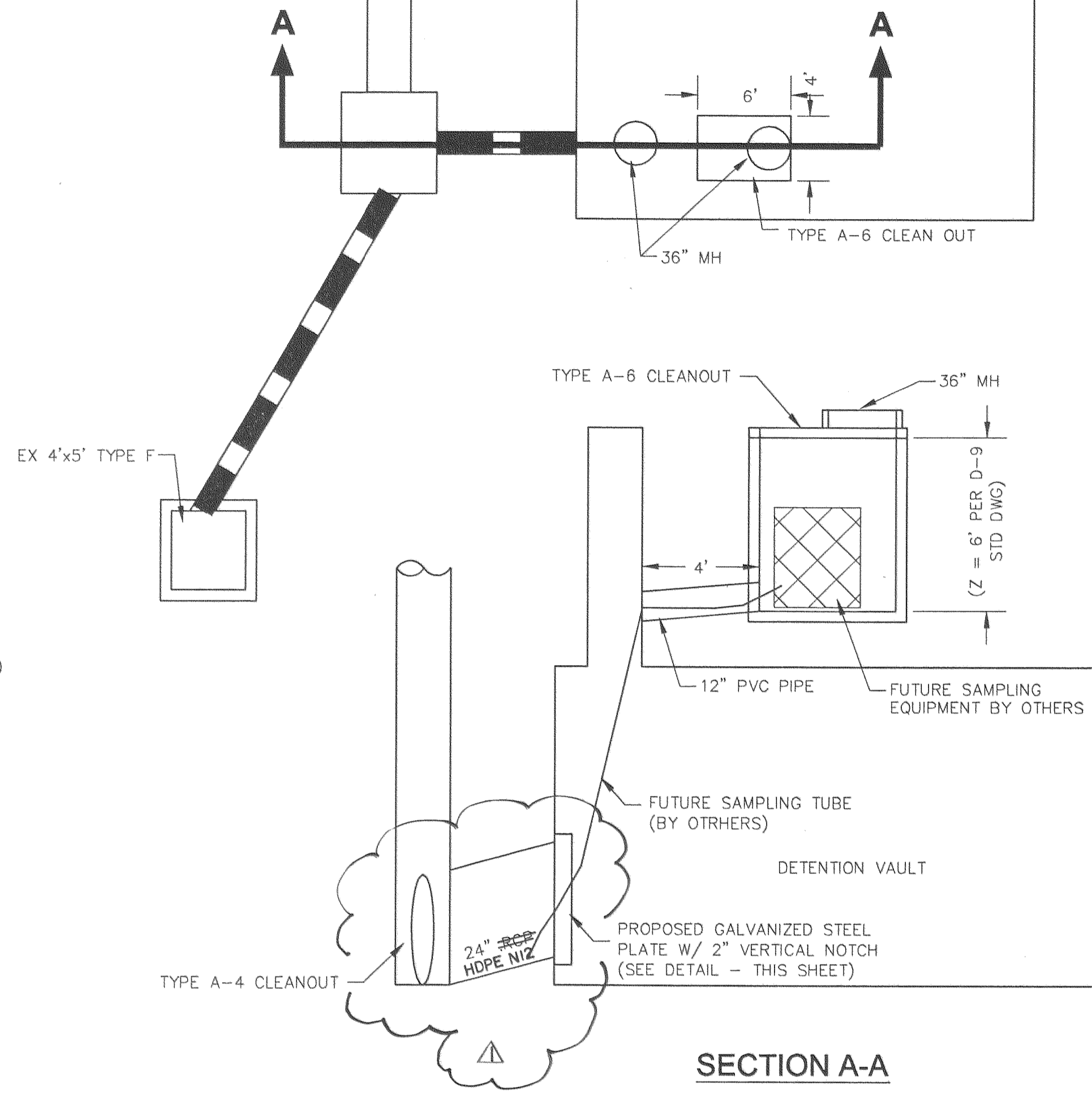
FOR REDUCED PLANS
ORIGINAL SCALE IS IN INCHES

	PLANS	BY	DATE
	DESIGNED	BRENDAN HASTIE	
	CHECKED	CARL HEWINGS	
RICK ENGINEERING 5620 FRIARS RD. SAN DIEGO, CA. 92110 619-291-0707 REGISTERED CIVIL ENGINEER		4-17-06 DATE	



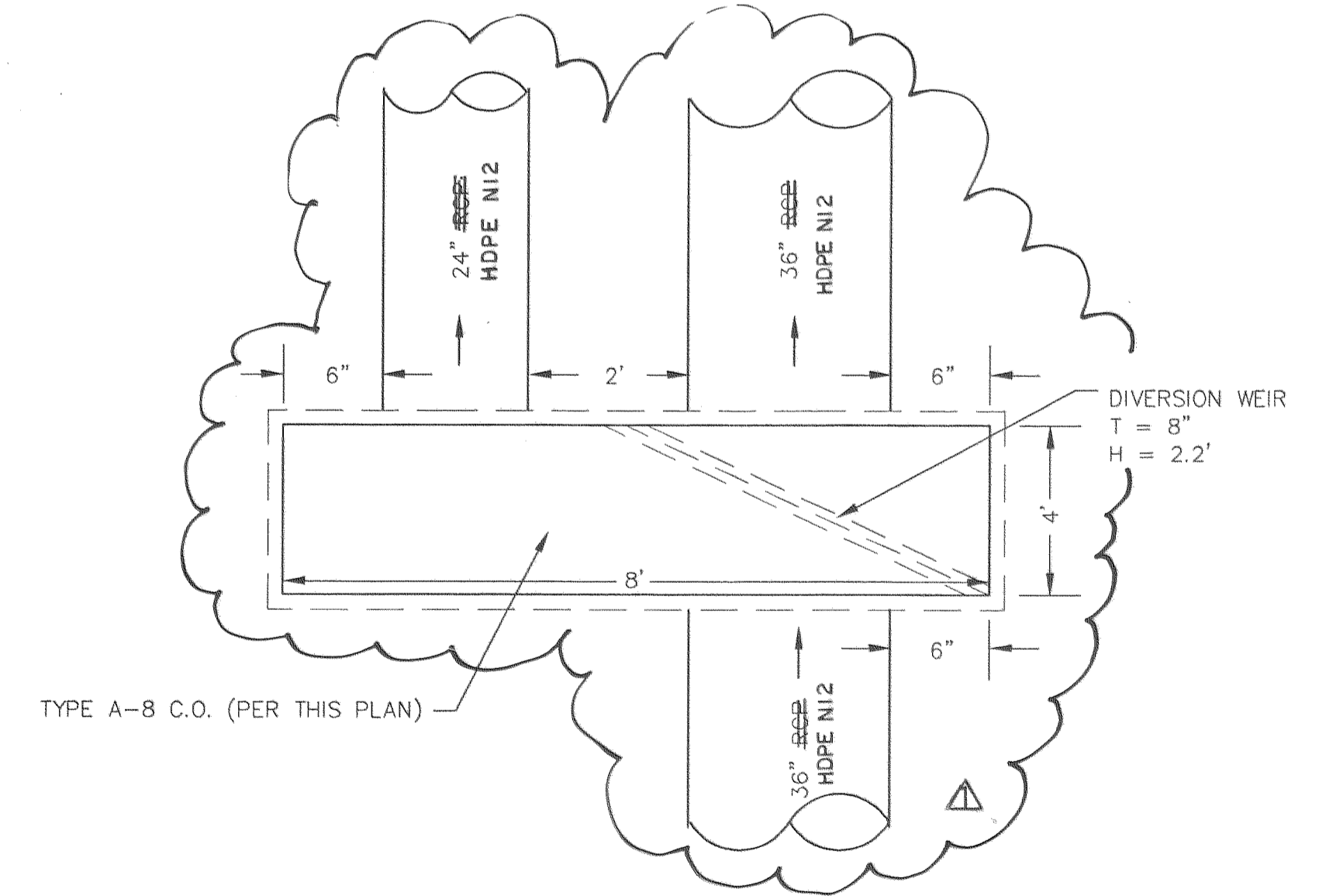
STORMWATER SAMPLING INFLOW LOCATION - TYPE A6 CLEAN OUT

(NO SCALE)



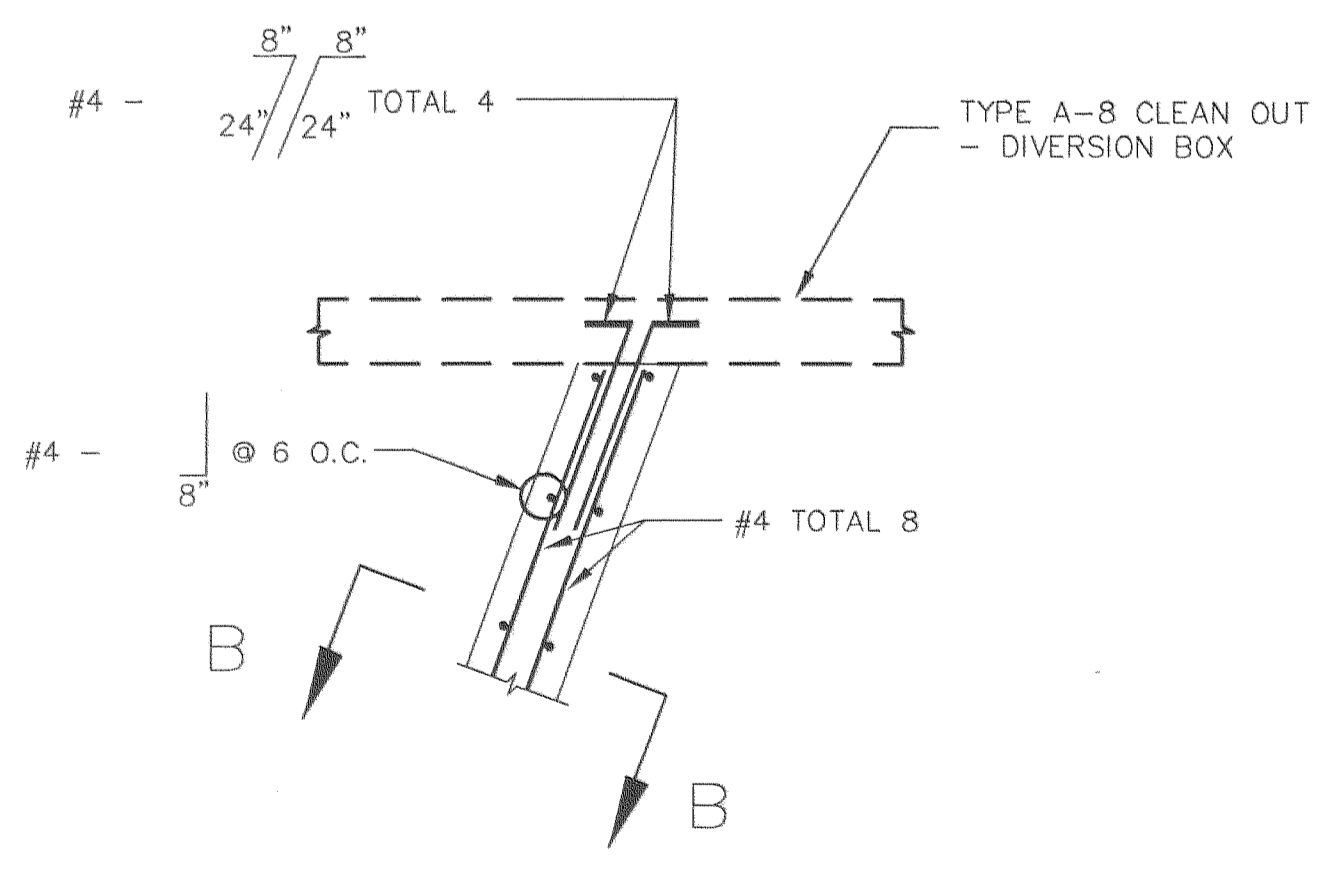
STORMWATER SAMPLING OUTFLOW LOCATION - TYPE A6 CLEAN OUT

(NO SCALE)



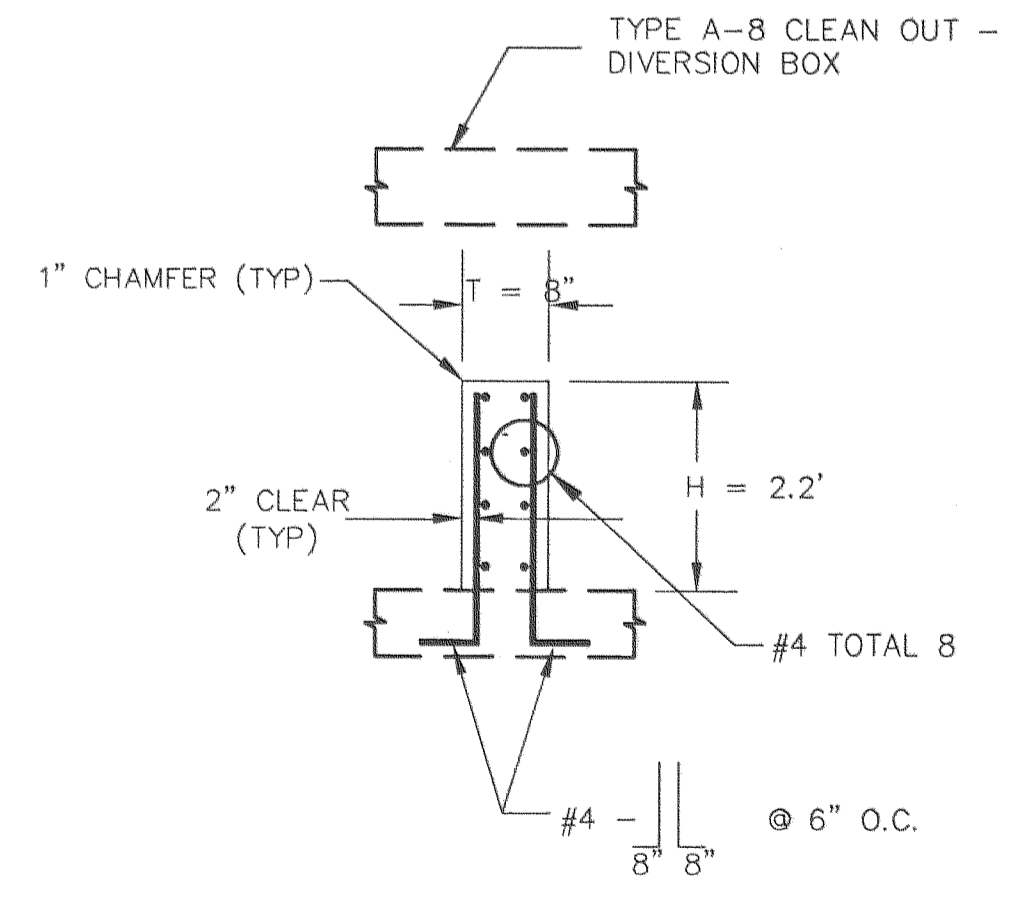
TYPE A-8 CLEAN OUT - DIVERSION BOX DETAIL

(NO SCALE)



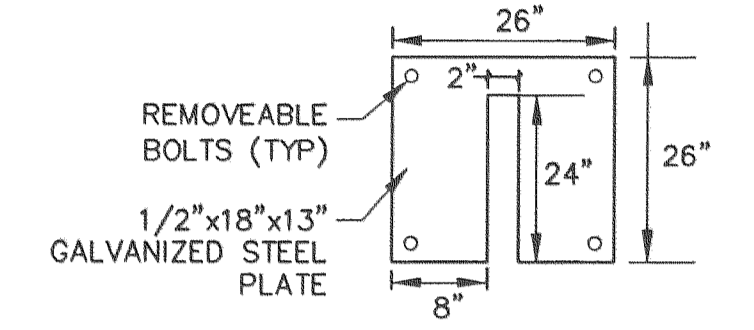
DIVERSION WEIR DETAIL

(NO SCALE)



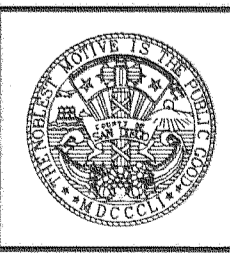
SECTION B-B

(NO SCALE)



LOW-FLOW RESTRICTOR PLATE (GALVANIZED STEEL PLATE)

COUNTY OF SAN DIEGO
DEPARTMENT OF PUBLIC WORKS
 5555 OVERLAND AVENUE, SAN DIEGO, CA 92123-1295



RICK ENGINEERING COMPANY
 5620 FRIARS ROAD
 SAN DIEGO, CA 92110
 619.291.0707
 (FAX) 619.291.4165
 rickengineering.com
 San Diego Riverside Sacramento Orange Phoenix Tucson

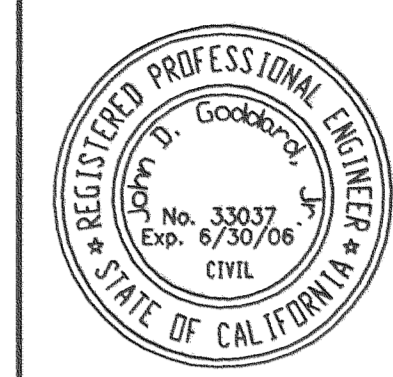
REVISIONS	BY	APPROVED	DATE	COORDINATE INDEX
				350 N 1683 E
				CONST. COMPL.
				FIELD REVISIONS

UNDERGROUND DETENTION BASIN AT
 McCLELLAN-PALOMAR AIRPORT
 In the Vicinity of Carlsbad

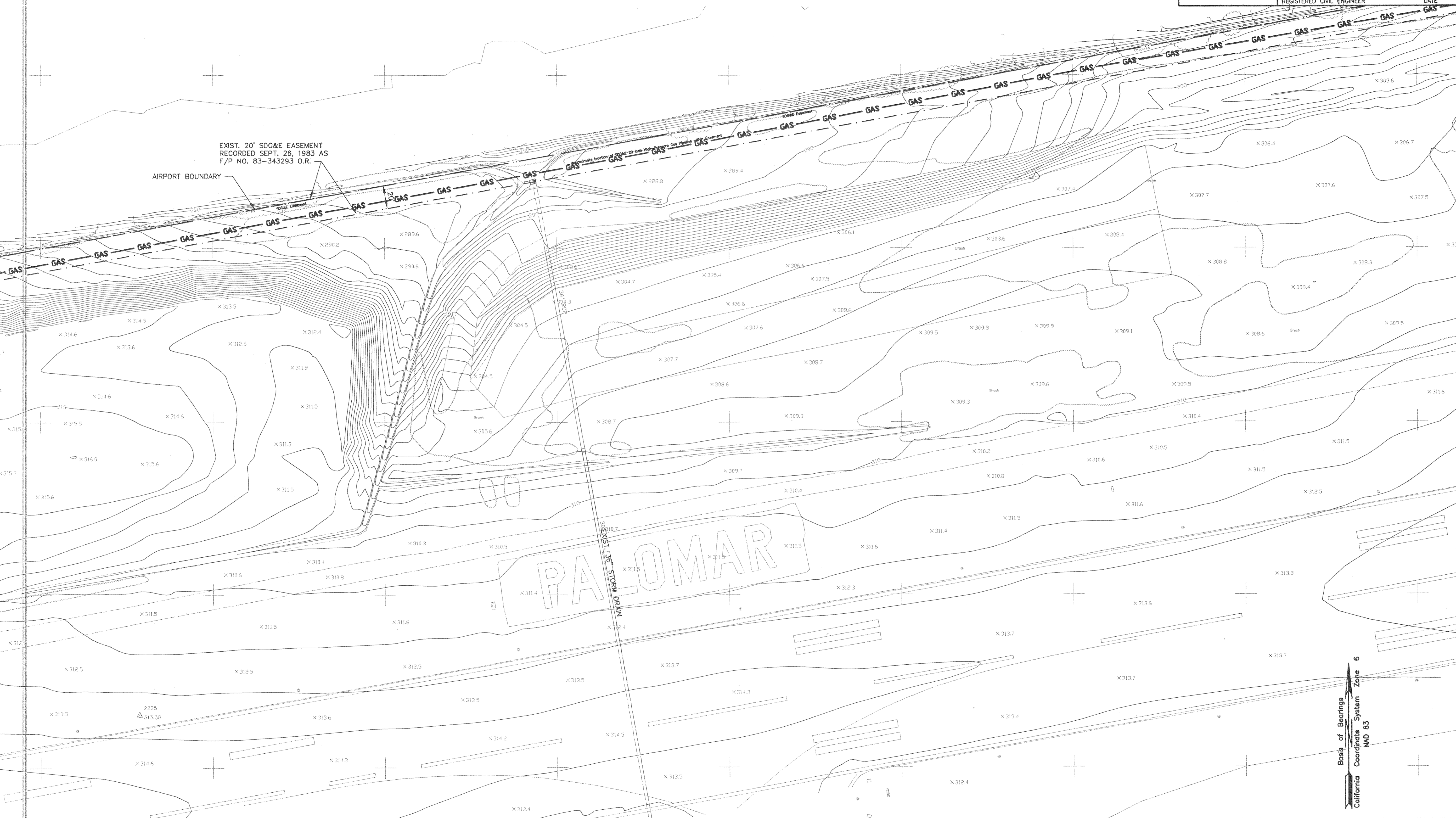
SCALE: HOR. N/A	VERT. N/A
W.A. ---	R.S. ---
SHEET 2 OF 8	

-1 0 1 2 3 4 5 6 7 8 9 10

FOR REDUCED PLANS
ORIGINAL SCALE IS IN INCHES

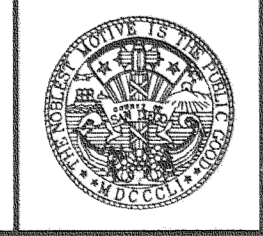


PLANS	BY	DATE
DESIGNED	BRENDAN HASTIE	
CHECKED	CARL HEWINGS	
DELINEATED		
RICK ENGINEERING 5620 FRIARS RD. SAN DIEGO, CA. 92110 619-291-0707		4-17-06 DATE
REGISTERED CIVIL ENGINEER		



Basis of Bearings
 California
 Coordinate System
 Zone 6
 NAD 83

COUNTY OF SAN DIEGO
DEPARTMENT OF PUBLIC WORKS
 5555 OVERLAND AVENUE, SAN DIEGO, CA 92123-1295



RICK
 ENGINEERING COMPANY
 5620 FRIARS ROAD
 SAN DIEGO, CA 92110
 619.291.0707
 (FAX) 619.291.4165
 rickengineering.com
 San Diego Riverside Sacramento Orange Phoenix Tucson

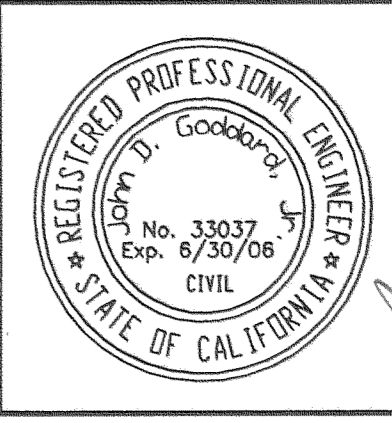
REVISIONS	BY	APPROVED	DATE
RECORD DRAWINGS	RLG	SML	4-06

COORDINATE INDEX	
350 N.	1683 E.
CONST. COMPL.	
FIELD REVISIONS	

UNDERGROUND DETENTION BASIN AT
 McCLELLAN-PALOMAR AIRPORT
 In the Vicinity of Carlsbad
EX. CONDITIONS / CONSTRAINTS

SCALE: HOR. 1"=40'	VERT. N/A
W.A. -	R.S. -
SHEET 3 OF 8	

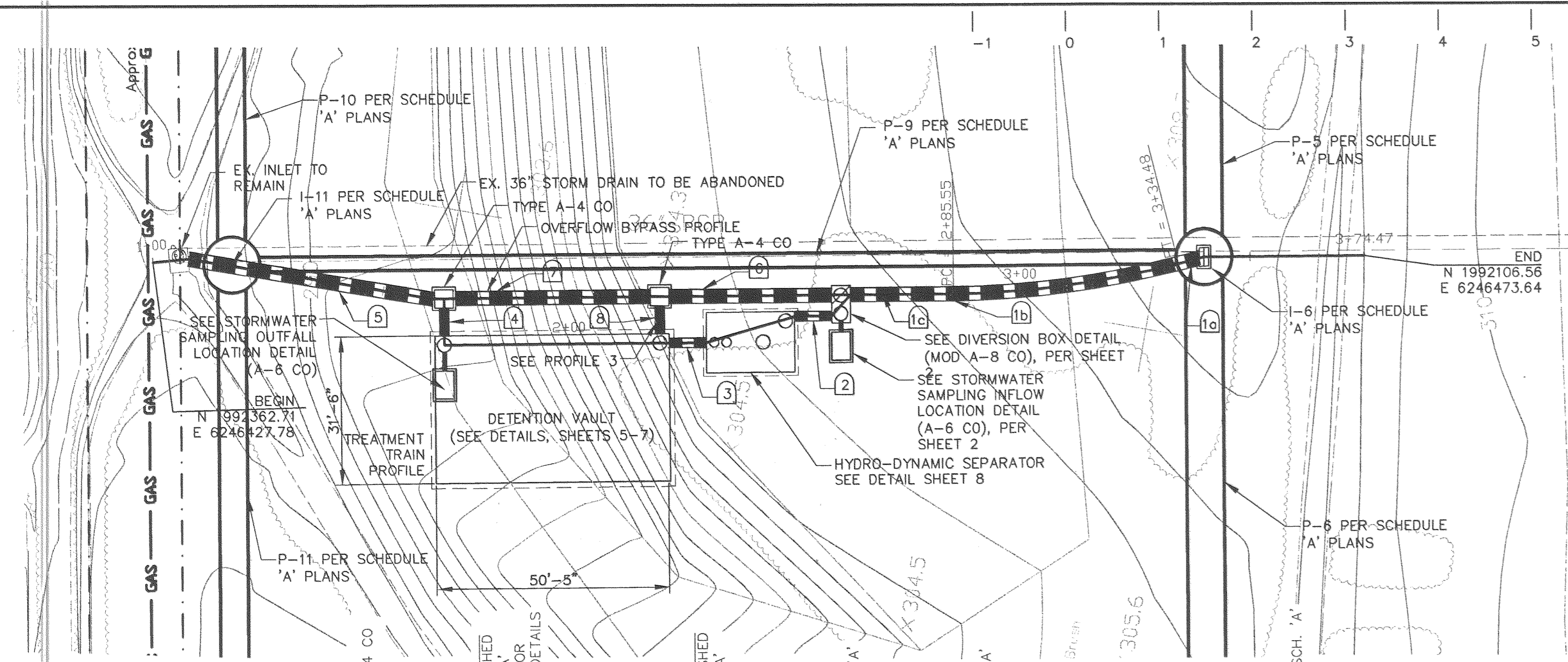
FOR REDUCED PLANS
ORIGINAL SCALE IS IN INCHES



PLANS	BY	DATE
DESIGNED	BRENDAN HASTIE	
CHECKED	CARL HEWINGS	
DELIMITED		

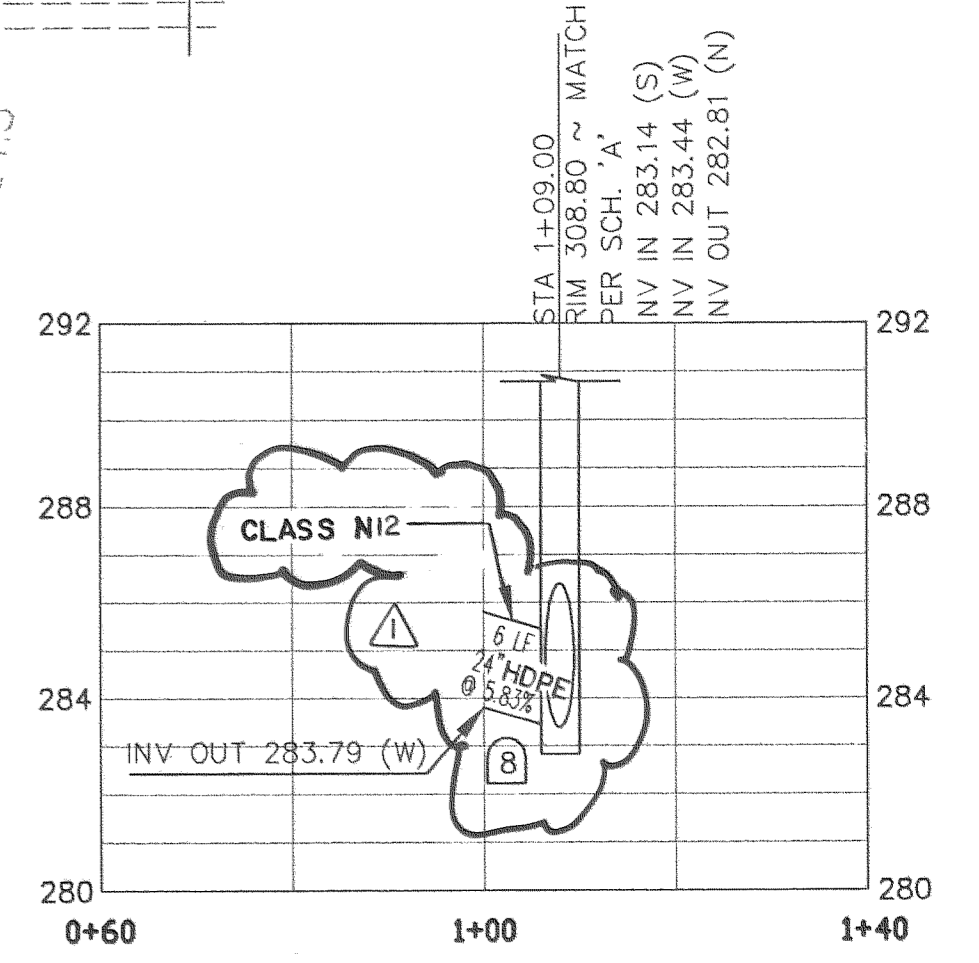
RICK ENGINEERING
5620 FRIARS RD.
SAN DIEGO, CA. 92110
619-291-0707

REGISTERED CIVIL ENGINEER
4-17-06
DATE

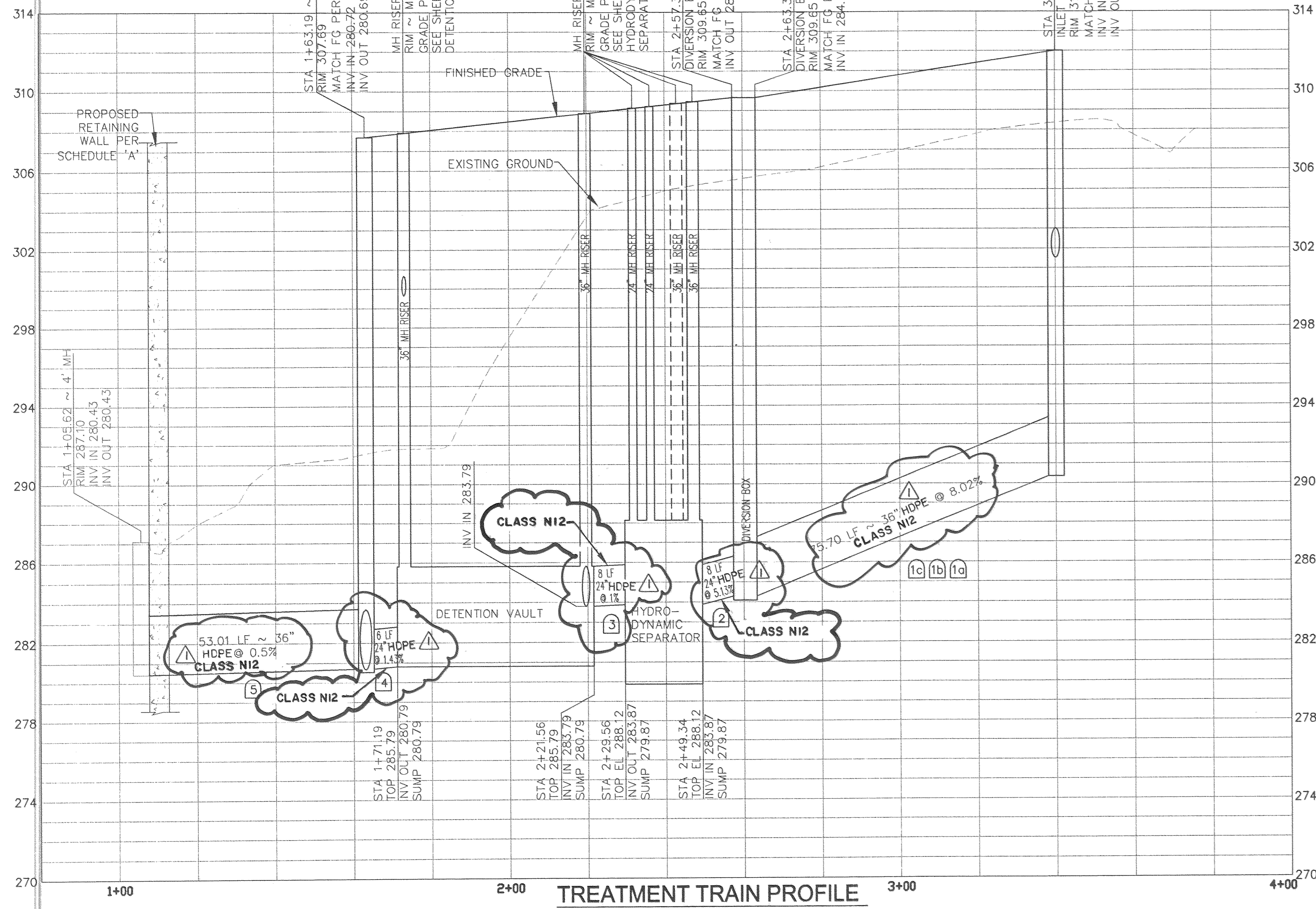


PLAN VIEW
SCALE: HORZ 1" = 20'

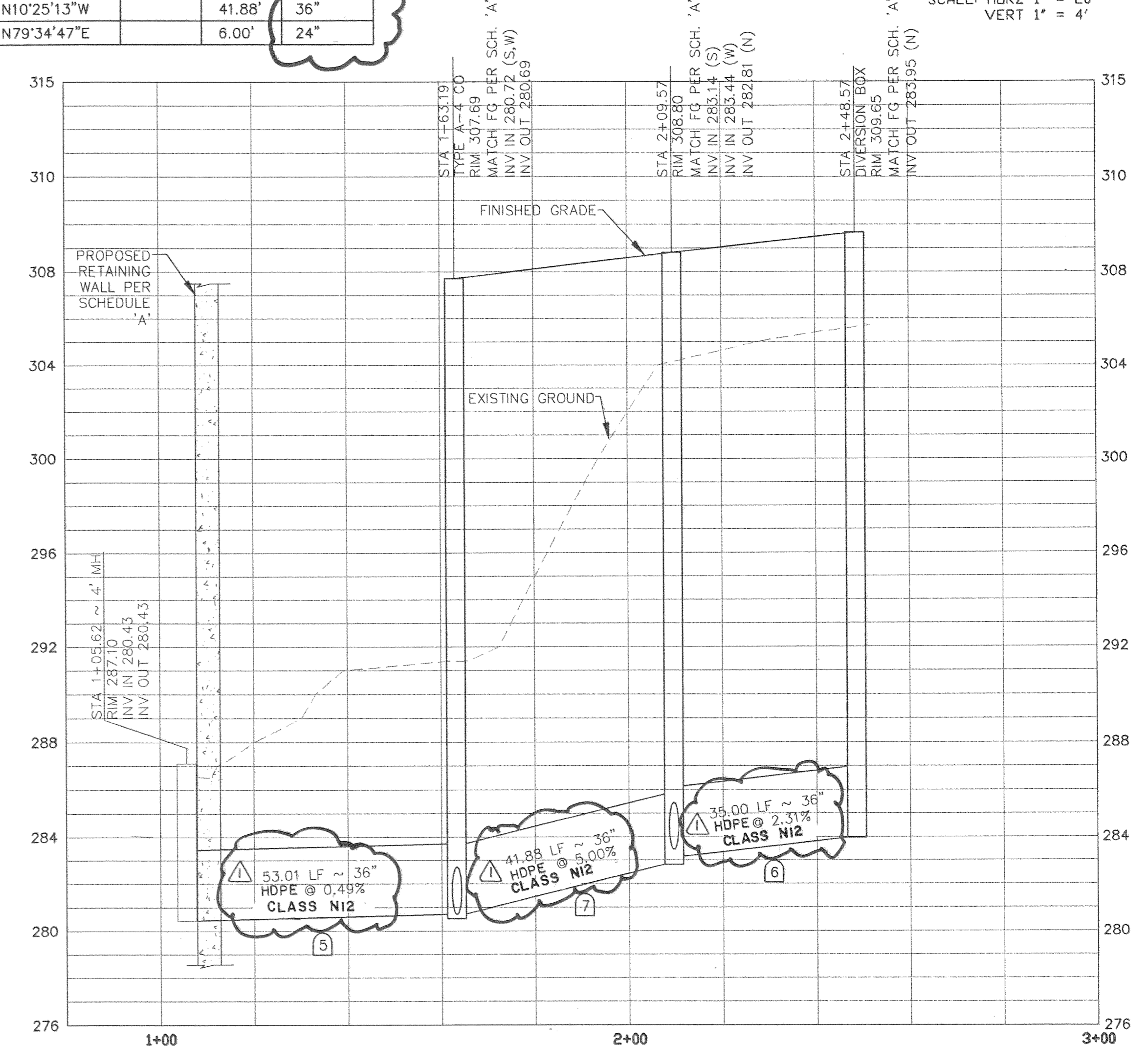
NO.	DELTA OR BRG.	RADIUS	LENGTH	REMARKS
(1a)	N24°26'10"W		4.59'	36" HDPE N12
(1b)	Δ14°00'55"	200.00'	48.92'	36"
(1c)	N10°25'15"W		22.19'	36"
(2)	N10°25'13"W		8.00'	24"
(3)	N10°25'13"W		8.00'	24"
(4)	N79°34'47"E	53.01'	6.00'	24"
(5)	N00°32'22"W		53.01'	36"
(6)	N10°25'13"W	41.88'	35.00'	36"
(7)	N10°25'13"W		41.88'	36"
(8)	N79°34'47"E		6.00'	24"



PROFILE 3
SCALE: HORZ 1" = 20'
VERT 1" = 4'

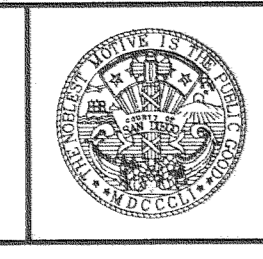


TREATMENT TRAIN PROFILE
SCALE: HORZ 1" = 20'
VERT 1" = 4'



OVERFLOW BYPASS PROFILE
SCALE: HORZ 1" = 20'
VERT 1" = 4'

COUNTY OF SAN DIEGO
DEPARTMENT OF PUBLIC WORKS
5555 OVERLAND AVENUE, SAN DIEGO, CA 92123-1295



RICK
ENGINEERING COMPANY
5620 FRIARS ROAD
SAN DIEGO, CA 92110
619.291.0707
(FAX) 619.291.4165
San Diego Riverside Sacramento Orange Phoenix Tucson


REVISIONS	BY	APPROVED	DATE
	RLG	SML	4-06

COORDINATE INDEX
350 N, 1683 E
CONST. COMPL.
FIELD REVISIONS

UNDERGROUND DETENTION BASIN AT
McCLELLAN-PALOMAR AIRPORT
In the Vicinity of Carlsbad
PLAN & PROFILE

SCALE: HOR.	1"=20'	VERT.	1"=4'
W.A.		R.S.	
SHEET 4 OF 8			

PLANS	BY	DATE
DESIGNED	BRENDAN HASTIE	
CHECKED	CARL HEWINGS	
DELINEATED		

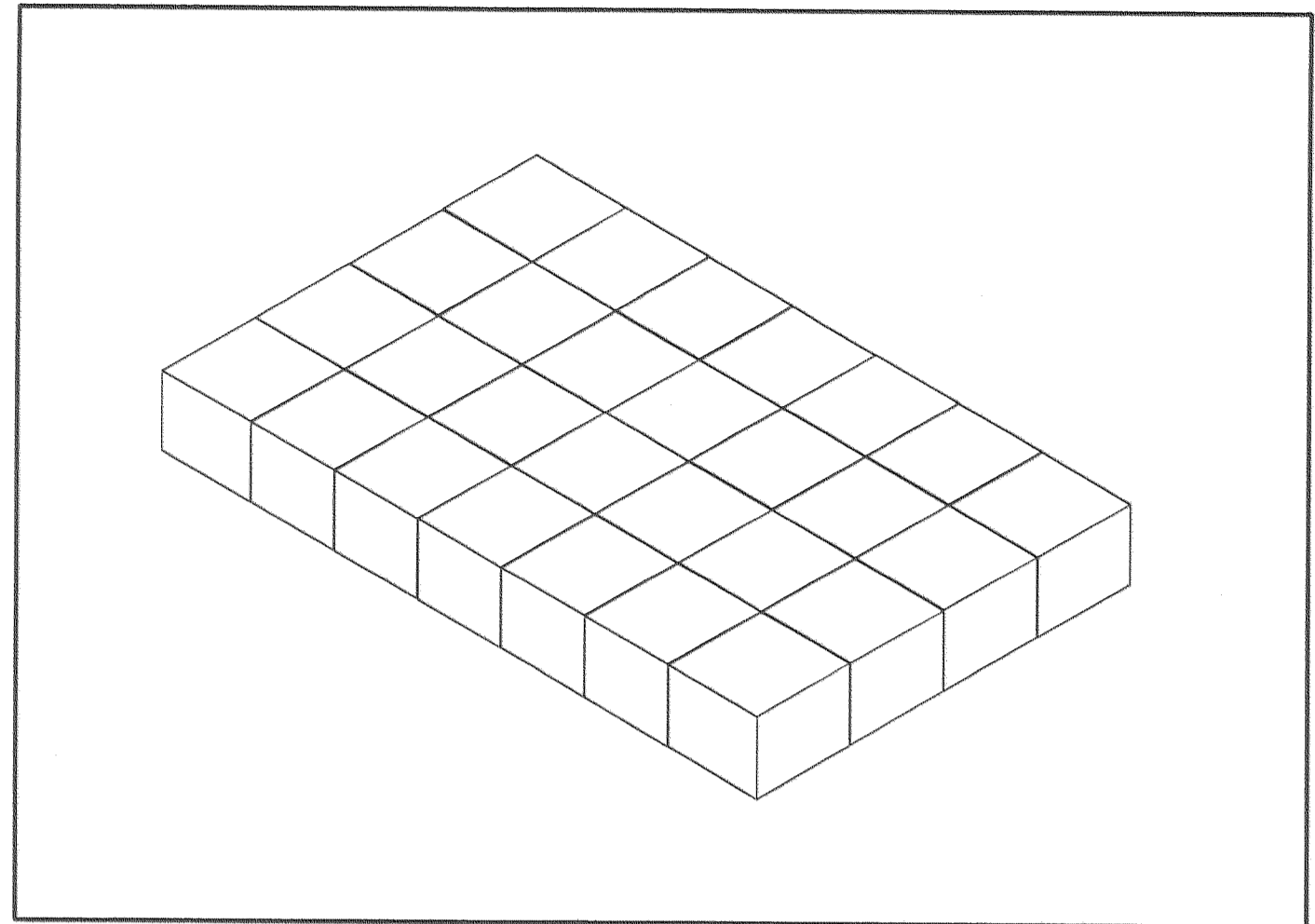


RICK ENGINEERING
5620 FRIARS RD.
SAN DIEGO, CA. 92110
619-291-0707

1-17-06
DATE

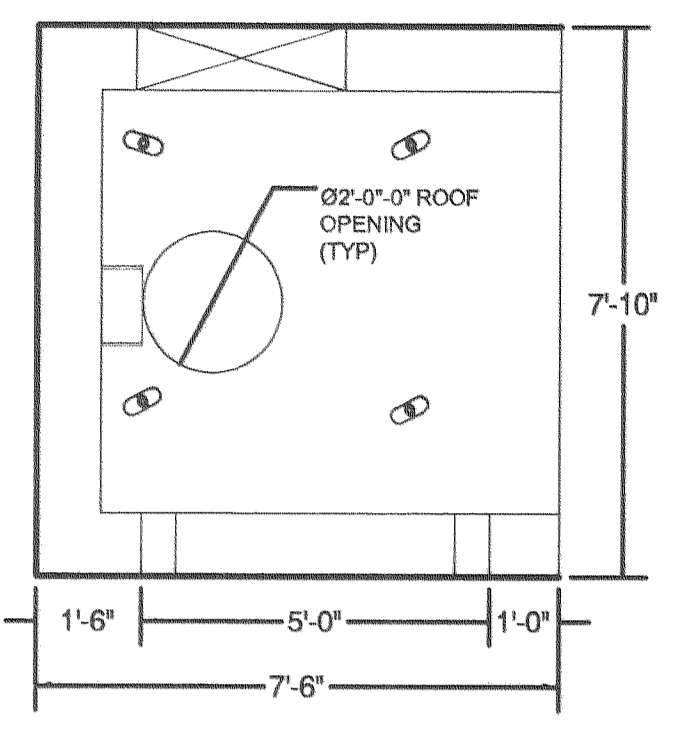
REGISTERED CIVIL ENGINEER

NOTE:
THIS SHEET IS PROVIDED BY THE VENDOR FOR INFORMATION ONLY. CONTRACTOR SHALL PROVIDE SHOP DRAWINGS SIGNED AND STAMPED BY A CALIFORNIA REGISTERED CIVIL ENGINEER.

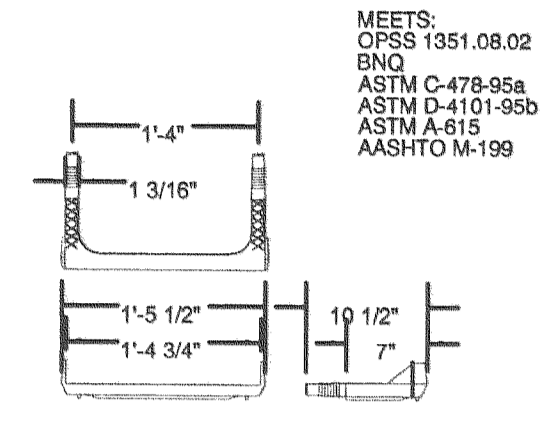


SHEET 1

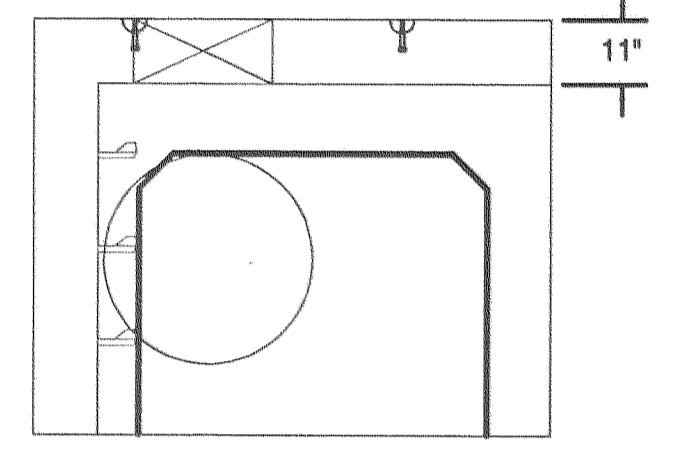
- RECOMMENDED ACCESS OPENING SPECIFICATION**
- A TYPICAL ACCESS OPENING FOR THE STORMTRAP SYSTEM RANGES FROM 2'-0" TO 3'-0" IN DIAMETER. HOWEVER, STORMTRAP IS CAPABLE OF HAVING OPENINGS LARGER THAN 3'-0" IN DIAMETER.
 - PLASTIC COATED STEEL STEPS PRODUCED BY M.A. INDUSTRIES PART #PSS-PFC (SEE DETAIL TO THE RIGHT) ARE TO BE PLACED INSIDE ANY UNIT WHERE DEEMED NECESSARY. THE HIGHEST STEP IN THE UNIT IS TO BE PLACED A DISTANCE OF 1'-0" FROM THE INSIDE EDGE OF THE STORMTRAP UNITS. ALL ENSUING STEPS SHALL BE PLACED WITH A MINIMUM DISTANCE OF 1'-4" BETWEEN THEM. STEPS MAY BE MOVED OR ALTERED TO AVOID OPENINGS OR OTHER IRREGULARITIES IN THE UNIT.
 - STORMTRAP LIFTING INSERTS MAY BE RELOCATED TO COINCIDE WITH THE ACCESS OPENING OR THE CENTER OF GRAVITY OF THE UNIT AS NEEDED.
 - STORMTRAP ACCESS OPENINGS MAY NOT INTERFERE WITH WITH INLET AND/OR OUTLET OPENINGS.
 - STORMTRAP ACCESS OPENINGS MAY NOT EXCEED A DISTANCE OF 50'-0" BETWEEN WITHOUT A CONSECUTIVE CORRESPONDING ACCESS OPENING.



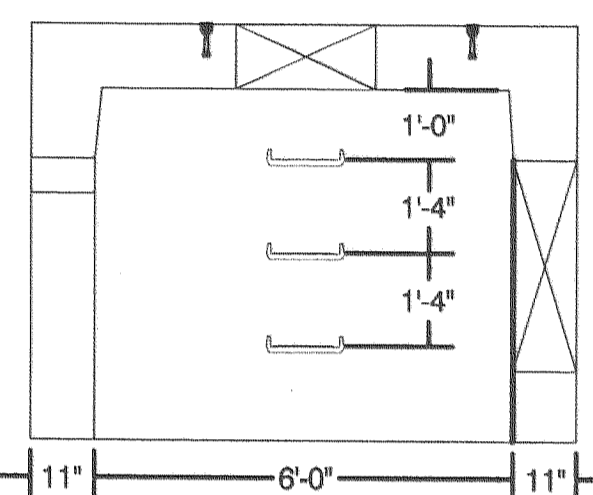
PLAN VIEW



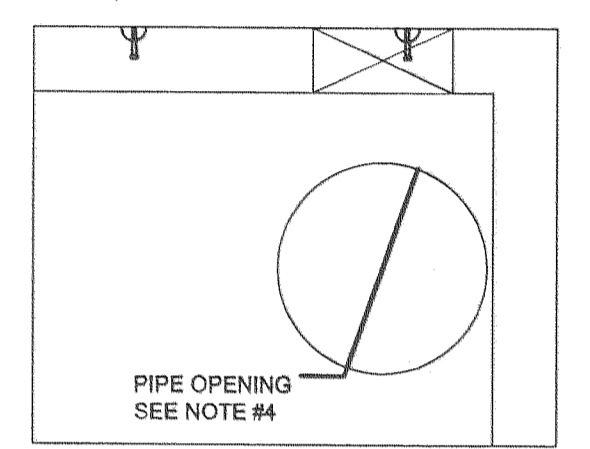
STAIR DETAIL



ELEVATION VIEW



SIDE VIEW

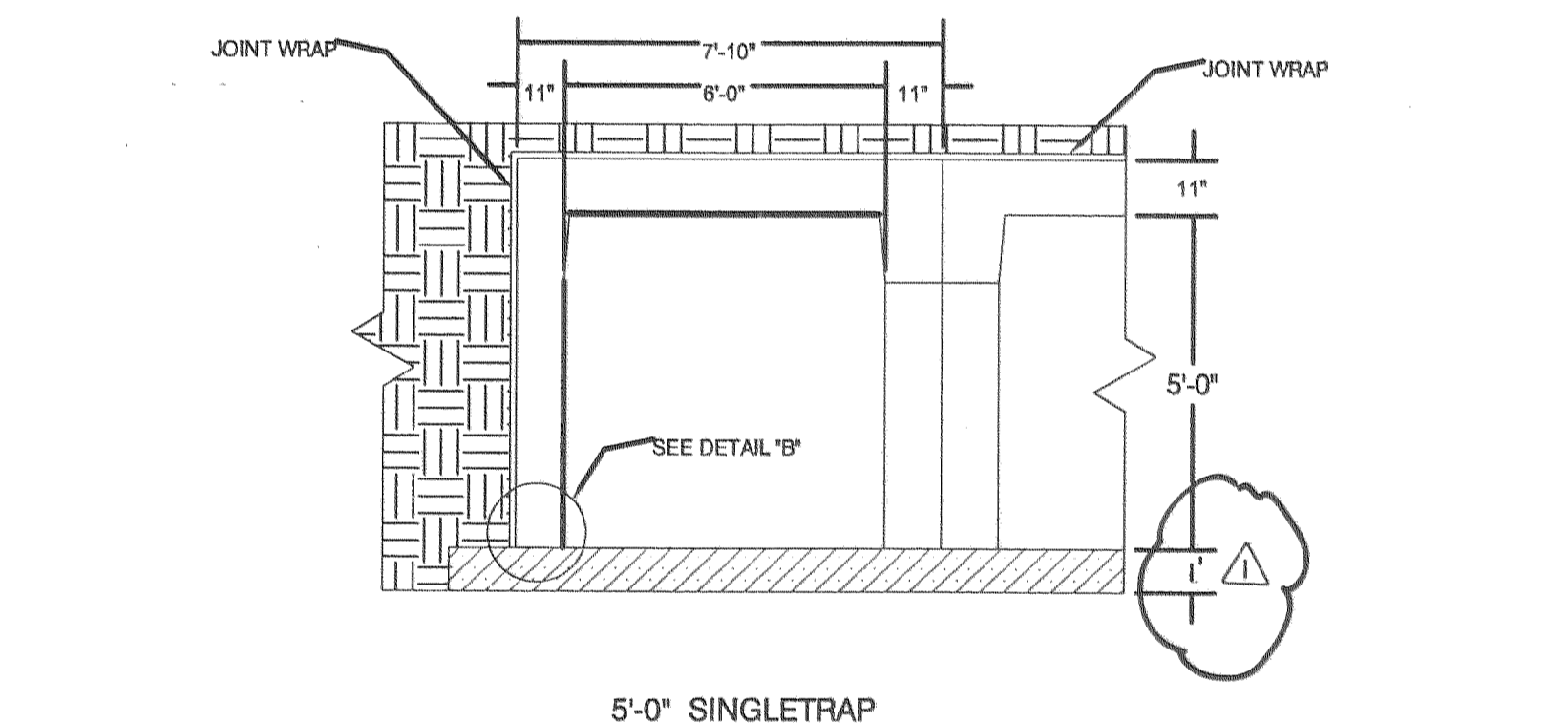


OUTSIDE WALL

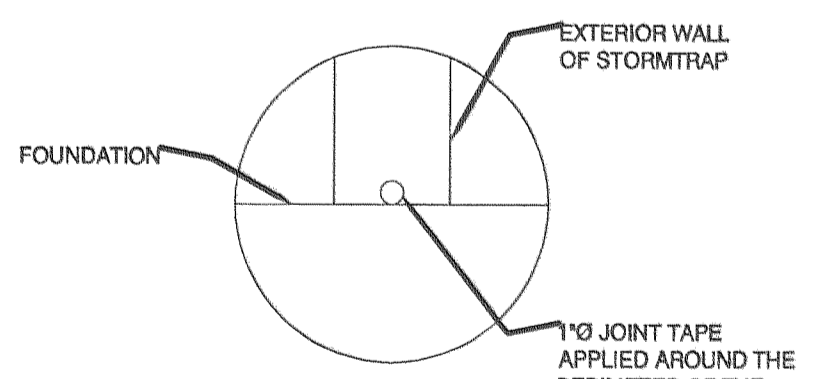
- RECOMMENDED PIPE OPENING SPECIFICATION**
- MINIMUM EDGE DISTANCE FOR AN OPENING ON THE OUTSIDE WALL SHALL BE NO LESS THAN 1'-0".
 - MINIMUM DISTANCE FROM THE BASE OF THE ROOF SLAB SHALL BE NO LESS THAN 1'-0".
 - ALL OPENINGS MUST RETAIN AT LEAST 1'-0" OF CLEARANCE IN ALL DIRECTIONS FROM THE EDGE OF THE STORMTRAP UNITS.
 - OPENING SIZE SHALL NOT EXCEED 02" OR 1'-8" LESS THEN THE INSIDE HEIGHT OF THE UNIT. EXAMPLE: 0'-0" UNIT MAXIMUM OPENING = 0'-0".
 - OPENINGS ARE NOT LIMITED TO THE ABOVE PARAMETERS BUT ARE RECOMMENDED. ANY OPENING NEEDED THAT DOES NOT FIT THE CRITERIA SHALL BE BROUGHT TO THE ATTENTION OF STORMTRAP FOR REVIEW.

SHEET 2.2

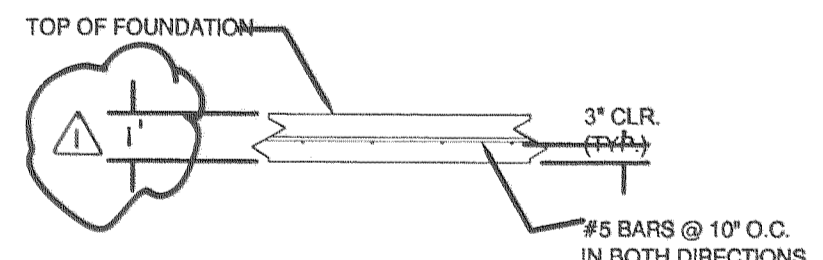
- STORMTRAP INSTALLATION SPECIFICATION**
- STORMTRAP MODULES SHALL BE MANUFACTURED ACCORDING TO SHOP DRAWINGS APPROVED BY THE INSTALLING CONTRACTOR AND ENGINEER. THE SHOP DRAWINGS SHALL INDICATE SIZE AND LOCATION OF ROOF OPENINGS AND INLET/OUTLET PIPE OPENINGS.
 - STORMTRAP SHALL BE INSTALLED IN ACCORDANCE WITH ASTM C891-90, STANDARD PRACTICE FOR INSTALLATION OF UNDERGROUND PRE-CAST CONCRETE UTILITY STRUCTURES. THE FOLLOWING ADDITIONS AND/OR EXCEPTIONS SHALL APPLY:
 - SPECIFICATIONS ON THE ENGINEERS DRAWINGS SHALL TAKE PRECEDENT.
 - STORMTRAP MODULES SHALL BE PLACED ON LEVEL FOUNDATION (SEE DETAIL "A") WITH A 1'-0" OVERHANG ON ALL SIDES THAT SHALL BE POURED IN A PLACE BY INSTALLING CONTRACTOR.
 - THE STORMTRAP MODULES SHALL BE PLACED SUCH THAT THE MAXIMUM SPACE BETWEEN ADJACENT MODULES DOES NOT EXCEED 3/4". IF THE SPACE EXCEEDS 3/4", THE MODULES SHALL BE RESET WITH APPROPRIATE ADJUSTMENT MADE TO LINE AND GRADE TO BRING THE SPACE INTO SPECIFICATION.
 - THE PERIMETER HORIZONTAL JOINT OF THE STORMTRAP MODULES SHALL BE SEALED TO THE FOOTINGS WITH PREFORMED MASTIC JOINT SEALER ACCORDING TO ASTM C891-90, 8.8 AND 8.12.
 - ALL EXTERIOR JOINTS BETWEEN ADJACENT STORMTRAP MODULES SHALL BE SEALED WITH 1'-0" EXTERNAL SEALING BANDS CONFORMING TO ASTM C891-90 AND SHALL BE 1'-0" RUBBER BUTYL SEALANT AS APPROVED BY STORMTRAP. THE JOINT WRAP BUTYL EXTERIOR WRAP SHALL BE INSTALLED ACCORDING TO THE FOLLOWING INSTALLATION INSTRUCTIONS:
 - USE A BRUSH OR WET CLOTH TO THOROUGHLY CLEAN THE OUTSIDE SURFACE AT THE POINT WHERE THE JOINT WRAP IS TO BE APPLIED.
 - A RELEASE PAPER PROTECTS THE BUTYL SEALANT SIDE OF THE JOINT WRAP. WRAP THE BUTYL TAPE (BUTYL SIDE DOWN) AROUND THE STRUCTURE, REMOVING THE RELEASE PAPER AS YOU GO. PRESS THE JOINT WRAP FIRMLY AGAINST THE STORMTRAP MODULE SURFACE WHEN APPLYING.
 - THE FILL PLACED AROUND THE STORMTRAP UNITS MUST BE DEPOSITED ON BOTH SIDES AT THE SAME TIME AND TO APPROXIMATELY THE SAME ELEVATION. AT NO TIME SHALL THE FILL BEHIND ONE SIDE BE MORE THAN 2'-0" HIGHER THAN THE FILL ON THE OPPOSITE SIDE. CARE SHALL BE TAKEN TO PREVENT ANY WEDGING ACTION AGAINST THE STRUCTURE. AND ALL SLOPES BOUNDING OR WITHIN THE AREA TO BE BACK FILLED MUST BE STEPPED OR SERRATED TO PREVENT WEDGE ACTION. (REFERENCE ARTICLE 502.10 I.D.O.T. S.S.(R.B.C.) CARE SHALL ALSO BE TAKEN AS NOT TO DISRUPT THE JOINT WRAP FROM THE JOINT DURING THE BACK FILL PROCESS.



5'-0" SINGLETRAP



DETAIL "B"
JOINT TAPE INSTALLATION

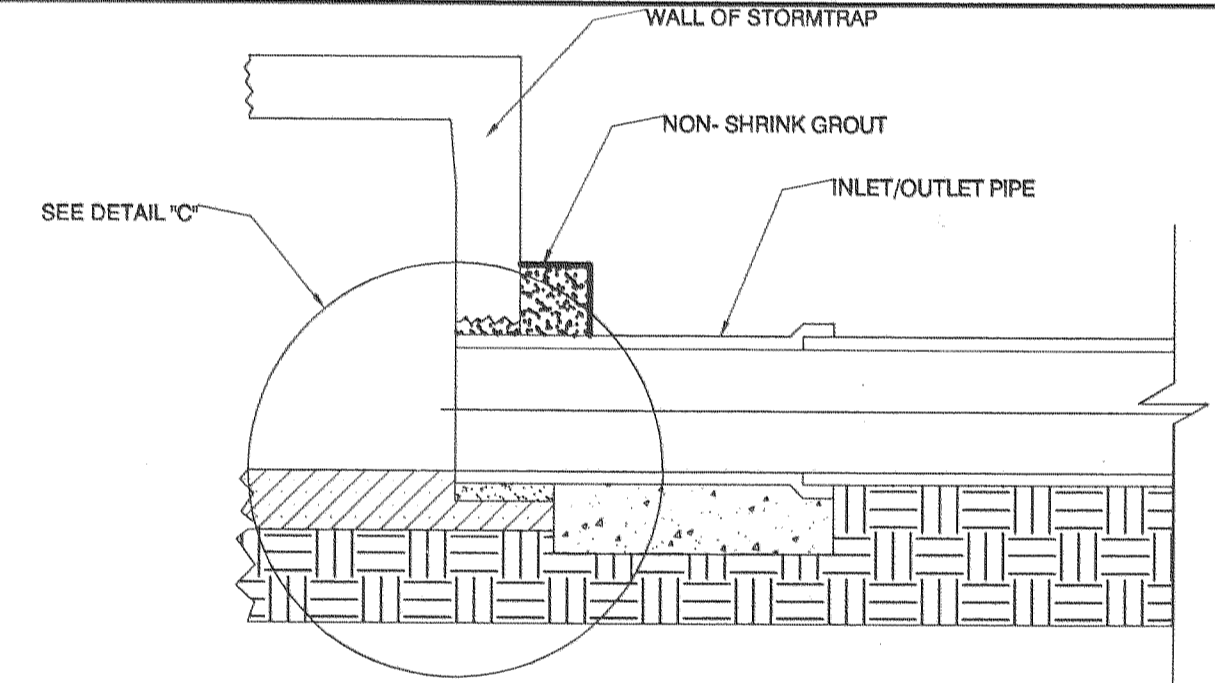


DETAIL "A"
STORM TRAP FOUNDATION

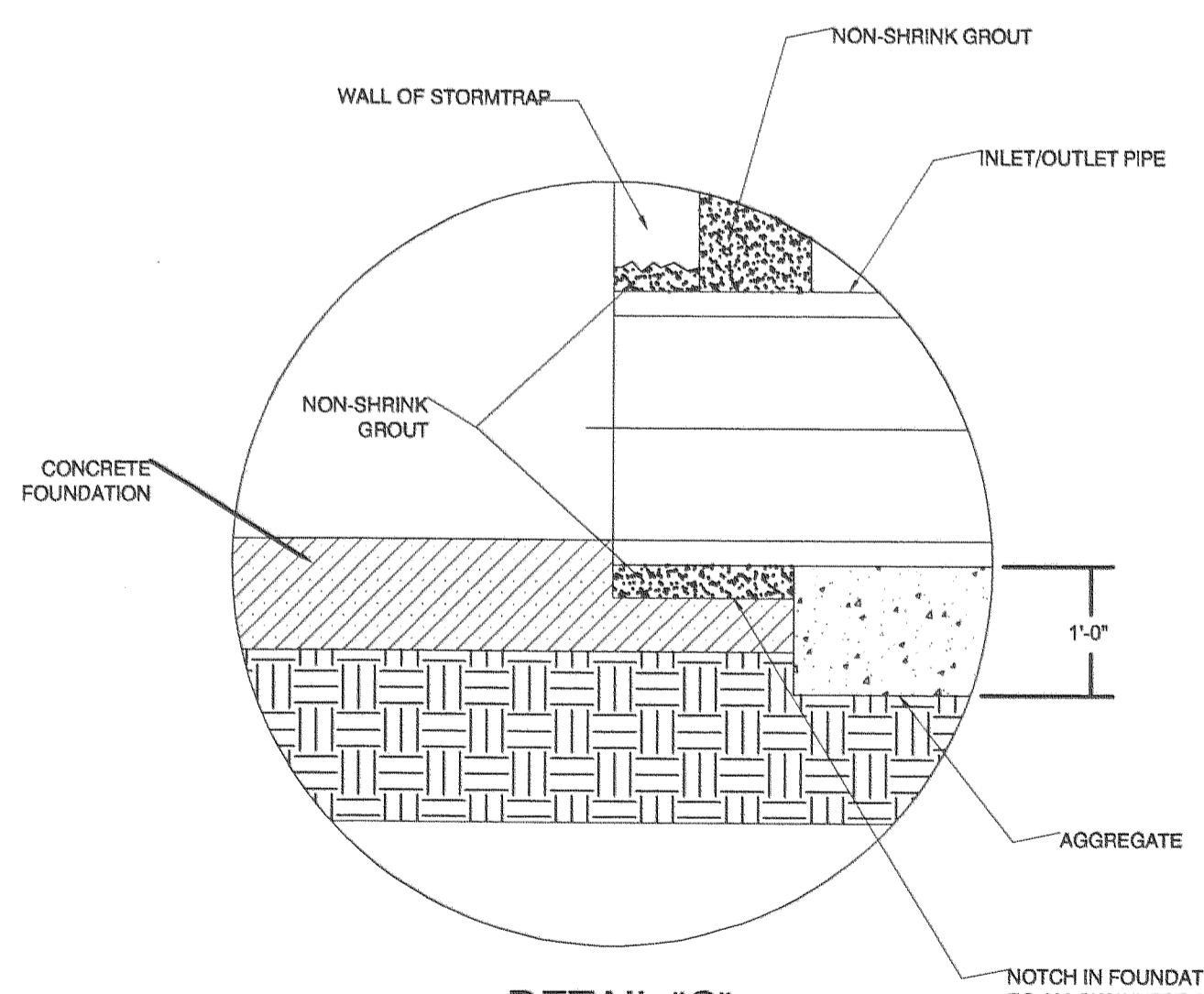
- STORMTRAP SPECIFICATION**
- CONCRETE: 6,000 p.s.i. @ 28 DAYS, 5%-8% ENTRAINED AIR, 4" MAX. SLUMP.
 - REBAR: ASTM A-615 GRADE 60.
 - DESIGN CRITERIA:
 - ASTM C898
 - LOADING PER ASTM C897, INCLUDING:
 - TOTAL COVER: MIN. 0" MAX. 20"
 - CONCRETE CHAMBER DESIGNED FOR AASHTO HS-20 WHEEL LOAD & APPLICABLE IMPACT.
 - VERTICAL & LATERAL SOIL PRESSURES DETERMINED USING:
 - GROUNDWATER AT 3'-0" BELOW GRADE.
 - REINFORCING COVER PER ACI 318.
 - WATERTIGHT SOLUTION: MEMBRANE PLACED IN PCC SLAB AND WRAPPED AROUND ENTIRE UNIT.

SHEET 2

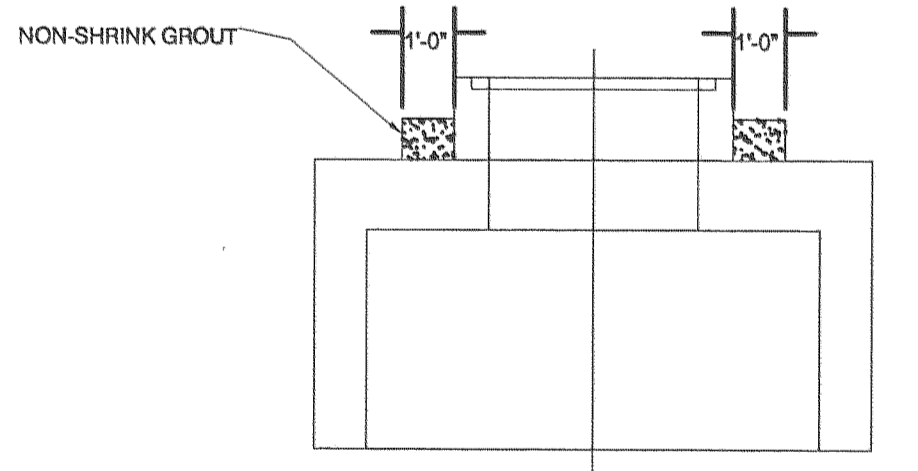
- RECOMMENDED PIPE/RISER SPECIFICATION**
- CONNECTING PIPES SHALL BE INSTALLED WITH A 1'-0" CONCRETE COLLAR, AND A CONCRETE CRADLE FOR AT LEAST ONE PIPE LENGTH, AS SHOWN. A STRUCTURAL GRADE CONCRETE OR GROUT WITH A MINIMUM 28 DAY COMPRESSIVE STRENGTH OF 3000 p.s.i. SHALL BE USED.
 - THE ANNULAR SPACE BETWEEN THE PIPE AND THE HOLE SHALL BE FILLED WITH NON-SHRINK GROUT.
- RECOMMENDED INSTALLATION INSTRUCTIONS**
- CLEAN AND LIGHTLY LUBRICATE ALL OF PIPE TO BE INSERTED INTO STORMTRAP.
 - IF PIPE IS CUT, CARE SHOULD BE TAKEN TO ALLOW NO SHARP EDGES. BEVEL AND LUBRICATE LEAD END OF PIPE.
 - ALIGN CENTER OF PIPE TO CORRECT ELEVATION AND INSERT INTO OPENING.



FOUNDATION PIPE CONNECTION



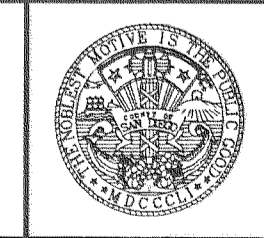
DETAIL "C"
CONNECTION DETAIL (NOT TO SCALE)



RISER DETAIL

SHEET 2.1

COUNTY OF SAN DIEGO
DEPARTMENT OF PUBLIC WORKS
5555 OVERLAND AVENUE, SAN DIEGO, CA 92123-1295



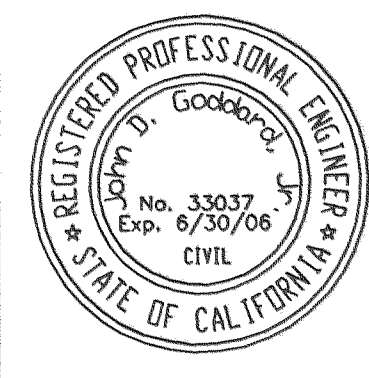
RICK ENGINEERING COMPANY
San Diego Riverside Sacramento Orange Phoenix Tucson
5620 FRIARS ROAD
SAN DIEGO, CA 92110
619.291.0707
(FAX) 619.291.4165
rickengineering.com

REVISIONS	BY	APPROVED	DATE	COORDINATE INDEX
				350 N, 1683 E
				CONST. COMPL.
				FIELD REVISIONS

RECORD DRAWINGS

UNDERGROUND DETENTION BASIN AT
McCLELLAN-PALOMAR AIRPORT
In the Vicinity of Carlsbad
DETENTION VAULT DETAILS & NOTES

SCALE: HOR. N/A	VERT. N/A
W.A. -	R.S. -
SHEET 5 OF 8	

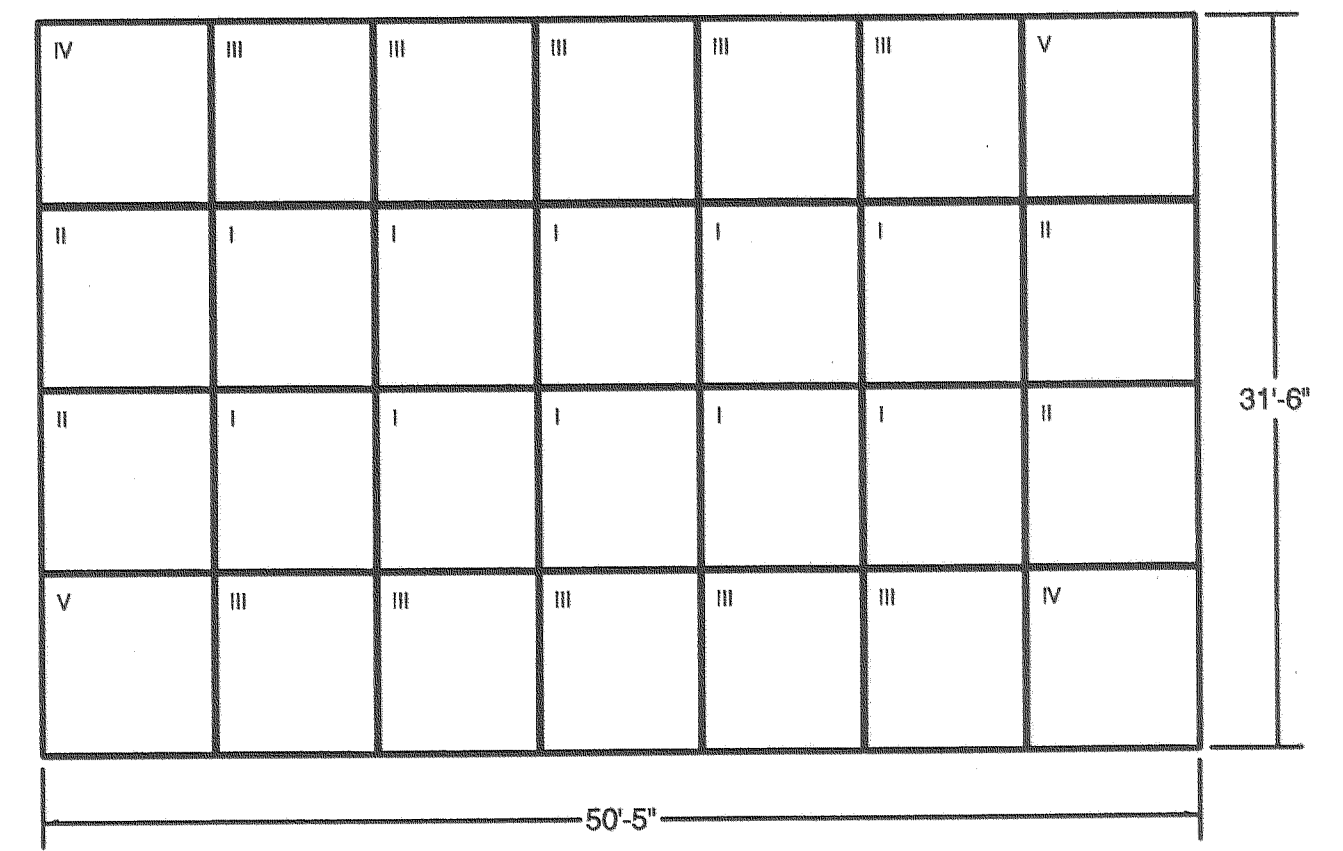


PLANS	BY	DATE
DESIGNED	BRENDAN HASTIE	
CHECKED	CARL HEWINGS	
DELINEATED		

RICK ENGINEERING
5620 FRIARS RD.
SAN DIEGO, CA. 92110
619-291-0707

REGISTERED CIVIL ENGINEER
DATE: 4-17-06

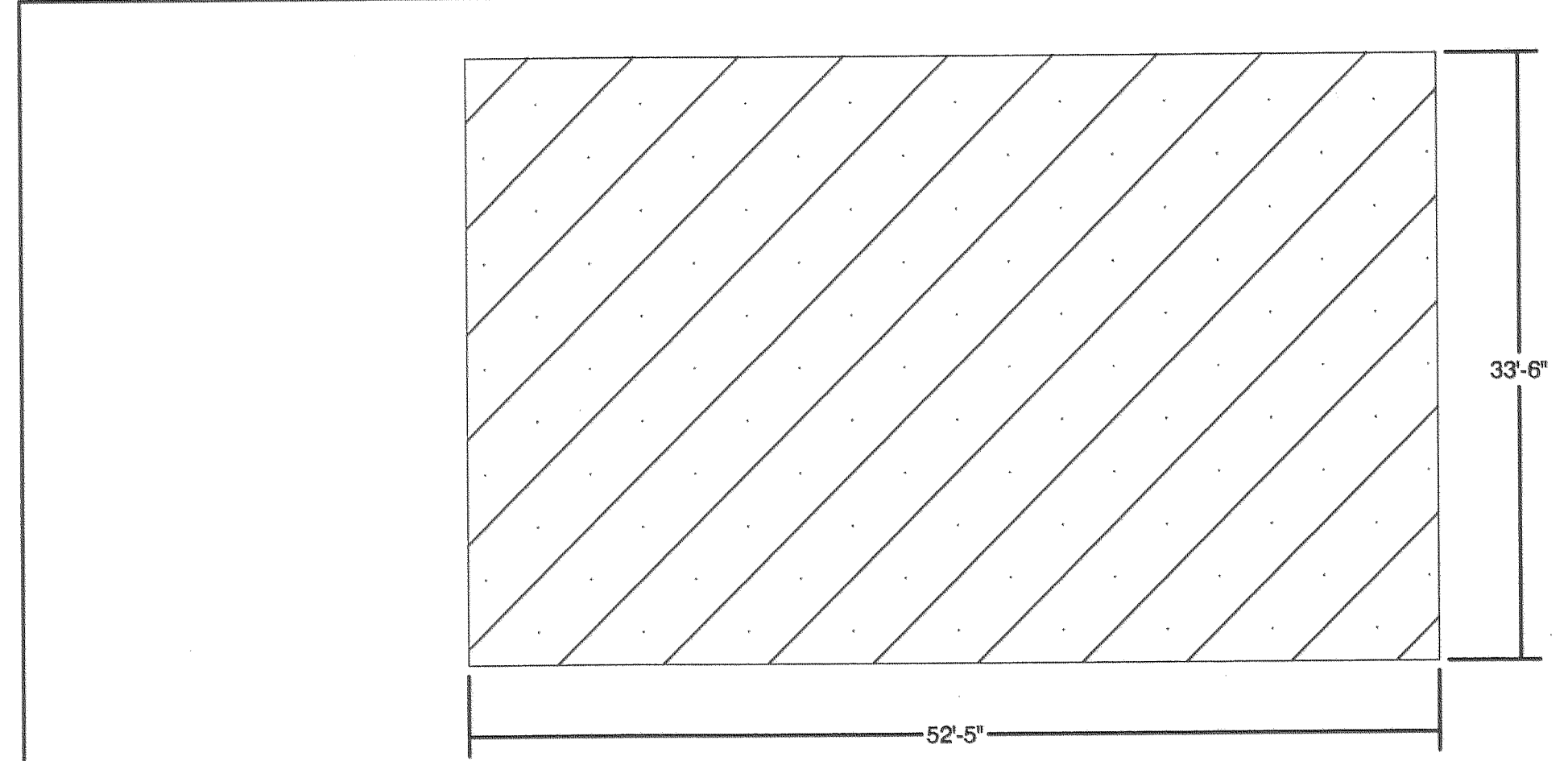
BILL OF MATERIALS		
QTY.	PART NO.	DESCRIPTION
10	TYPE I	5'-0" SINGLETRAP TYPE I
4	TYPE II	5'-0" SINGLETRAP TYPE II
10	TYPE III	5'-0" SINGLETRAP TYPE III
2	TYPE IV	5'-0" SINGLETRAP TYPE IV
2	TYPE V	5'-0" SINGLETRAP TYPE V
15	JOINT TAPE	JOINT TAPE - 14.8' PER ROLL
5	JOINT WRAP	JOINT WRAP - 150' PER ROLL



LAYOUT DETAIL

5'-0" SINGLETRAP UNITS
6523 C.F. OF STORAGE
SEE SHEET 2 FOR INSTALLATION SPECIFICATIONS

- NOTES:
- DIMENSION OF STORMTRAP SYSTEM ALLOW FOR A 3/4" GAP BETWEEN EACH UNIT.
 - ALL DIMENSIONS TO BE VERIFIED IN THE FIELD BY OTHERS.



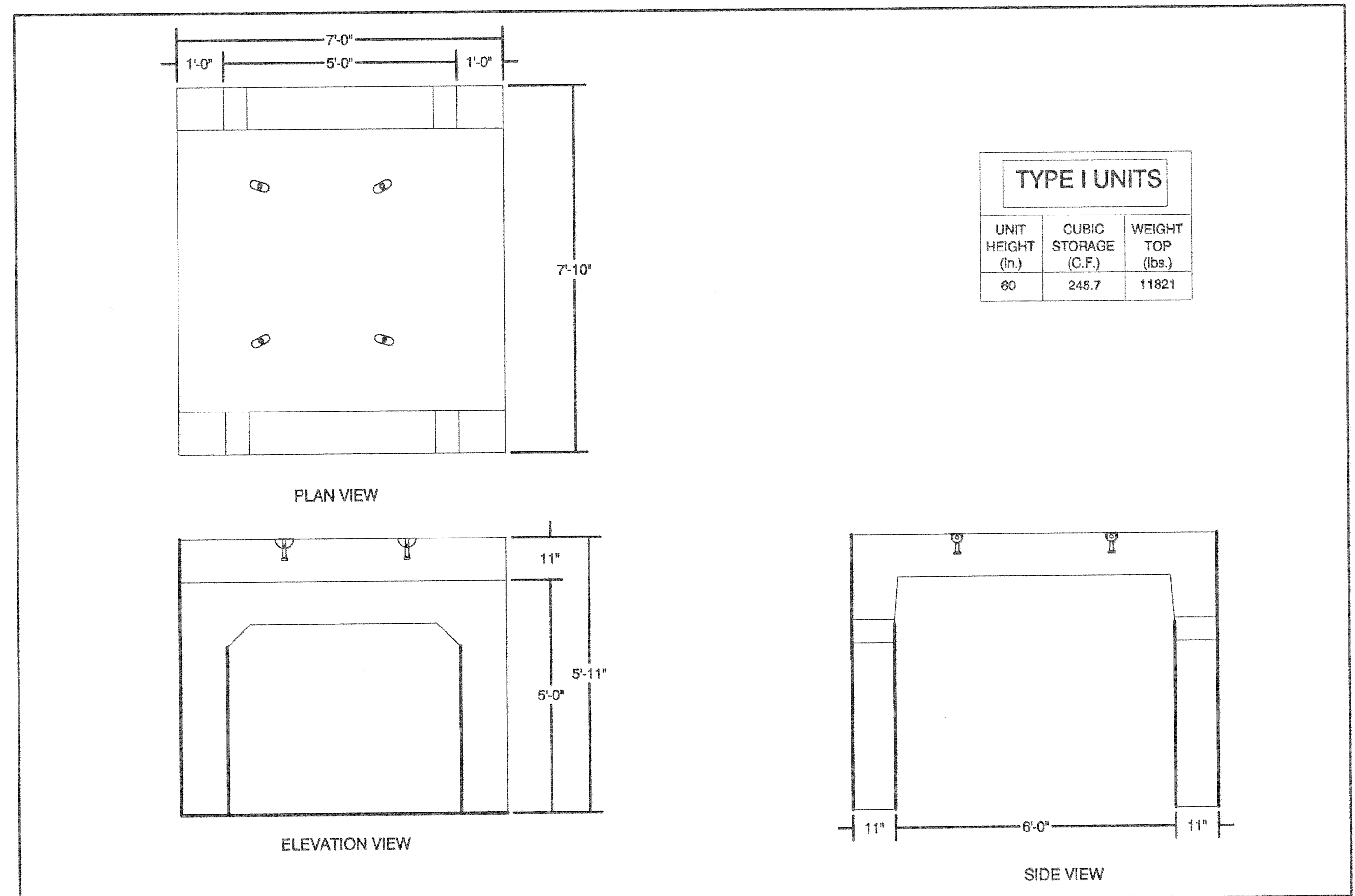
CONCRETE FOUNDATION PLAN

- NOTES:
- DIMENSION OF FOUNDATION MUST HAVE 1/2" OVERHANG BEYOND EXTERNAL FACE OF UNITS.
 - DIMENSION OF STORMTRAP SYSTEM ALLOW FOR A 3/4" GAP BETWEEN EACH UNIT.
 - ALL DIMENSIONS TO BE VERIFIED IN THE FIELD BY OTHERS.
 - SEE SHEET 2 FOR INSTALLATION SPECIFICATIONS.

NOTE:
THIS SHEET IS PROVIDED BY THE VENDOR FOR INFORMATION ONLY. CONTRACTOR SHALL PROVIDE SHOP DRAWINGS SIGNED AND STAMPED BY A CALIFORNIA REGISTERED CIVIL ENGINEER.

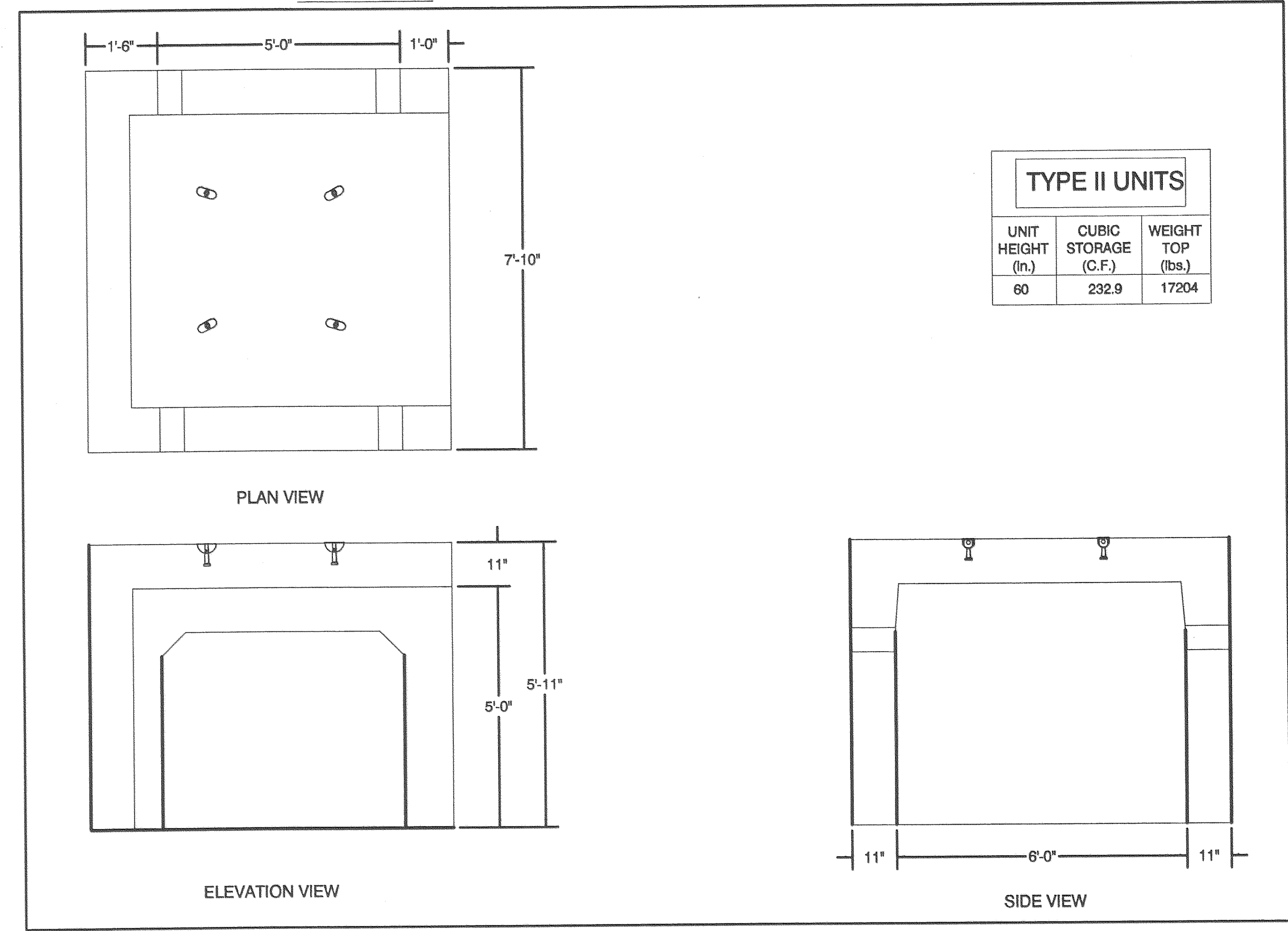
SHEET 3

SHEET 3.1



TYPE I UNITS		
UNIT HEIGHT (in.)	CUBIC STORAGE (C.F.)	WEIGHT TOP (lbs.)
60	245.7	11821

SHEET 4



TYPE II UNITS		
UNIT HEIGHT (in.)	CUBIC STORAGE (C.F.)	WEIGHT TOP (lbs.)
60	232.9	17204

SHEET 5

COUNTY OF SAN DIEGO
DEPARTMENT OF PUBLIC WORKS
5555 OVERLAND AVENUE, SAN DIEGO, CA 92123-1295



RICK ENGINEERING COMPANY
5620 FRIARS ROAD
SAN DIEGO, CA 92110
619.291.0707
(FAX) 619.291.4165
rickengineering.com

REVISIONS	BY	APPROVED	DATE
	RLG	SML	4-06

COORDINATE INDEX	
350 N.	1683 E.
CONST. COMPL.	
FIELD REVISIONS	

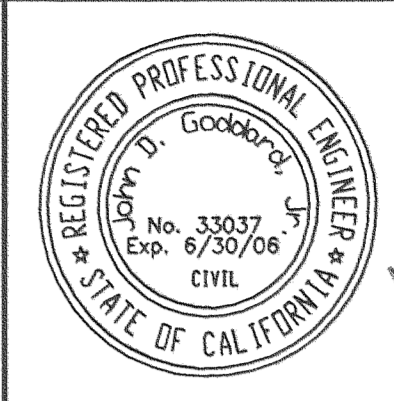
UNDERGROUND DETENTION BASIN AT
McCLELLAN-PALOMAR AIRPORT
In the Vicinity of Carlsbad
DETENTION VAULT DETAILS & NOTES

SCALE: HOR. N/A	VERT. N/A
W.A. -	R.S. -
SHEET 6 OF 8	

RECORD DRAWINGS

-1 0 1 2 3 4 5 6 7 8 9 10

FOR REDUCED PLANS
ORIGINAL SCALE IS IN INCHES



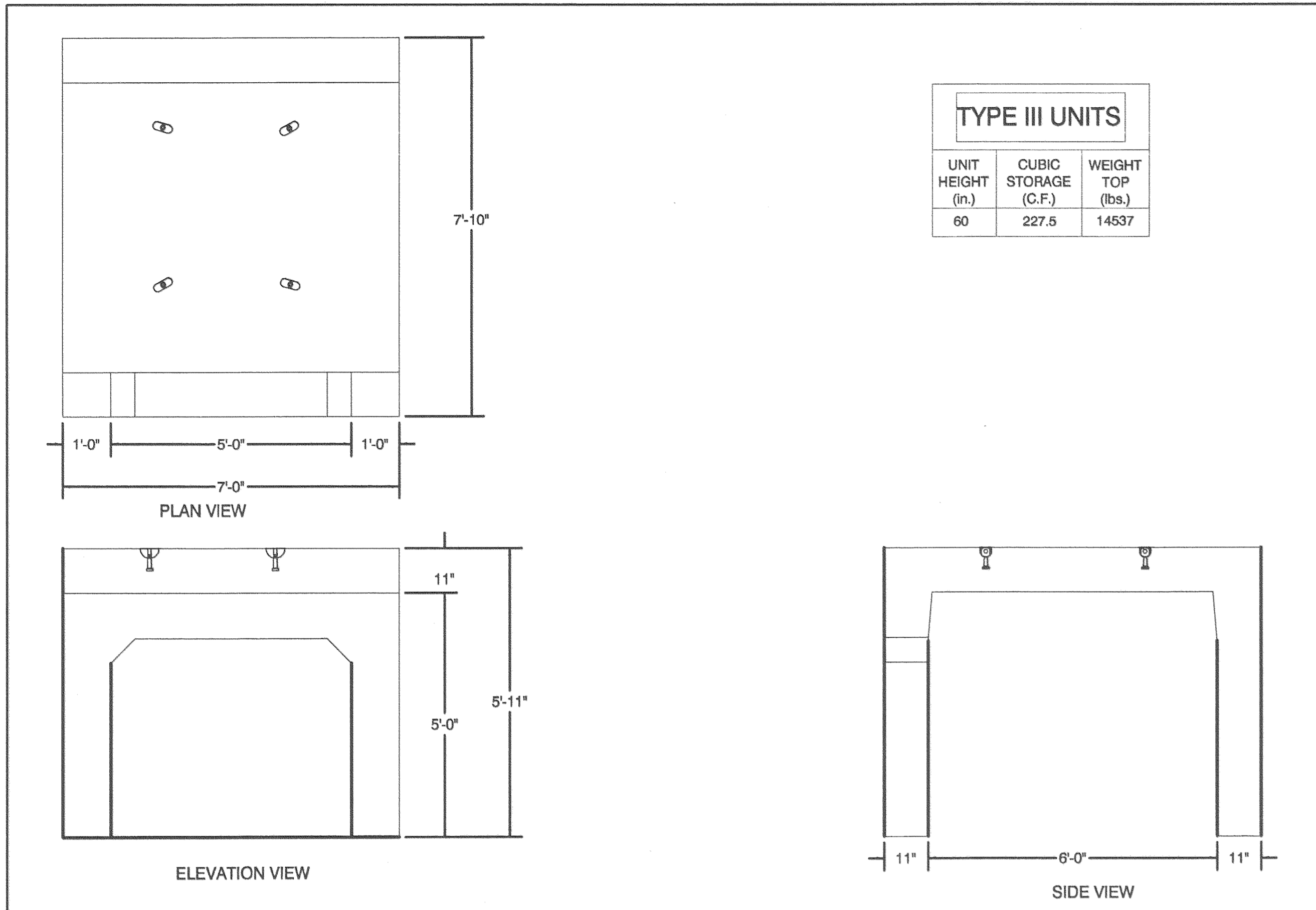
PLANS	BY	DATE
DESIGNED	BRENDAN HASTIE	
CHECKED	CARL HEWINGS	
DELINEATED		

RICK ENGINEERING
5620 FRIARS RD.
SAN DIEGO, CA. 92110
619-291-0707

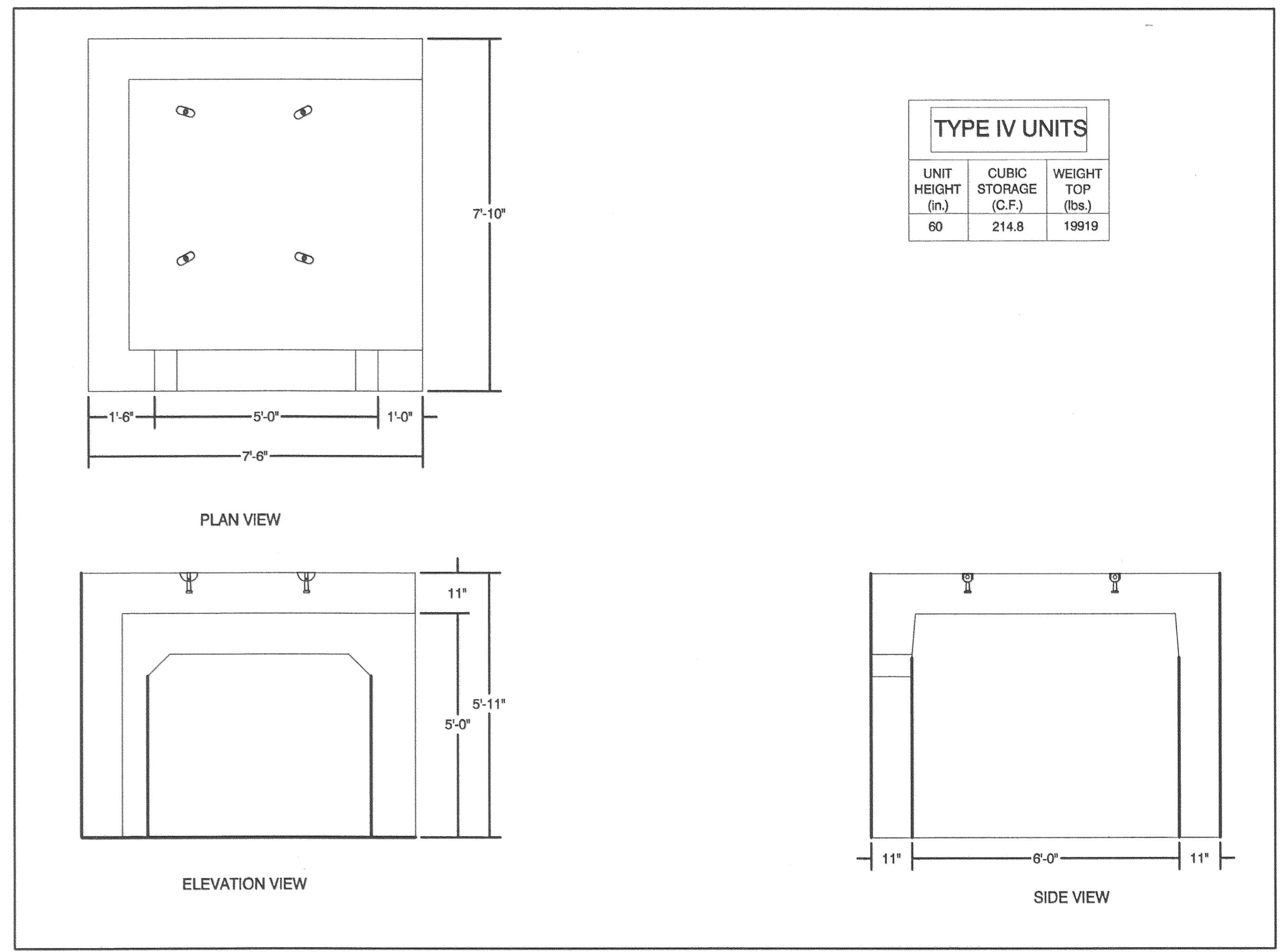
[Signature]
REGISTERED CIVIL ENGINEER

1-17-06
DATE

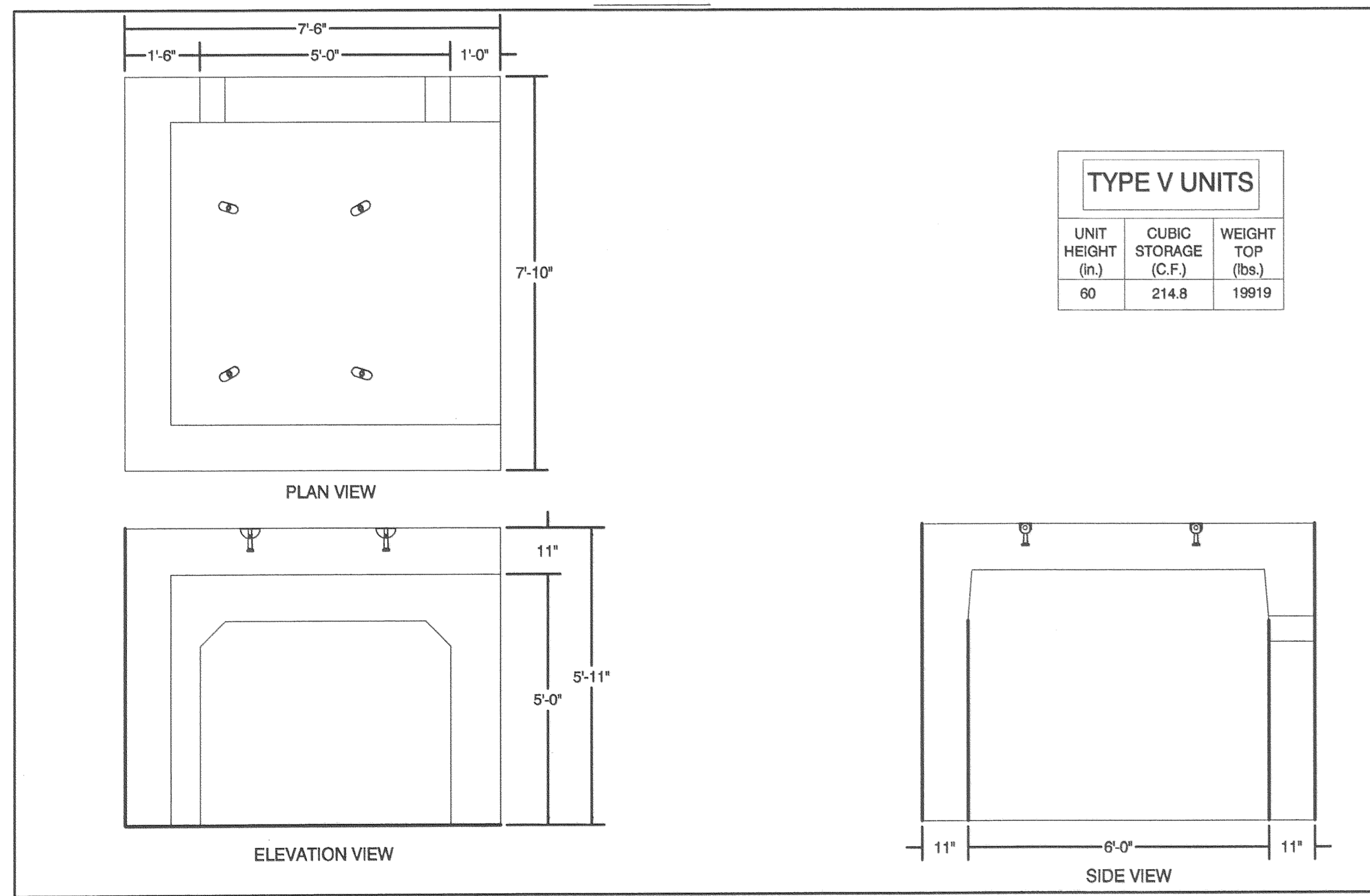
NOTE:
THIS SHEET IS PROVIDED BY THE VENDOR FOR INFORMATION ONLY. CONTRACTOR SHALL PROVIDE SHOP DRAWINGS SIGNED AND STAMPED BY A CALIFORNIA REGISTERED CIVIL ENGINEER.



SHEET 6

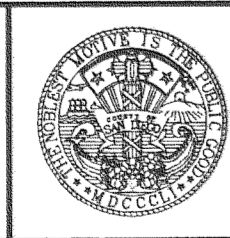


SHEET 7



SHEET 8

COUNTY OF SAN DIEGO
DEPARTMENT OF PUBLIC WORKS
5555 OVERLAND AVENUE, SAN DIEGO, CA 92123-1295



RICK ENGINEERING COMPANY
5620 FRIARS ROAD
SAN DIEGO, CA 92110
619.291.0707
FAX 619.291.4165
rickengineering.com

San Diego Riverside Sacramento Orange Phoenix Tucson

REVISIONS	BY	APPROVED	DATE	COORDINATE INDEX
				350 N, 1683 E.
				CONST. COMPL.
				FIELD REVISIONS

UNDERGROUND DETENTION BASIN AT
McCLELLAN-PALOMAR AIRPORT
In the Vicinity of Carlsbad
DETENTION VAULT DETAILS & NOTES

SCALE: HOR. <u>N/A</u> VERT. <u>N/A</u>
W.A. <u>-</u> R.S. <u>-</u>
SHEET <u>7</u> OF <u>8</u>

RECORD DRAWINGS

RLG SML 4-06

