

# Permanent Road Division Program



**Presented by:**

**Jen Winfrey, Unit Manager  
Department of Public Works  
County of San Diego**

**[Jen.Winfrey@SDCounty.ca.gov](mailto:Jen.Winfrey@SDCounty.ca.gov)**

**858-495-5470**

# Objectives



- **To ensure property owners within existing PRD Zones have the knowledge and opportunity to provide input and make decisions about their private road maintenance.**
- Basic understanding about the PRD Program
- County staff and road committee contact information

# Permanent Road Division (PRD) Zones

---

- PRD Zones are special districts formed at the request of property owners or as a condition of development
- Provide private road maintenance services
- Funded by property owner paid assessments or special taxes
- Some PRD Zones, formed before 1978, receive a portion of the countywide property tax revenue
- PRD Zone revenues are kept in individual funds



# Permanent Road Division Program

5,700 Parcels &  
16,500 Residents  
Served by PRD Program



2023 Overall Pavement  
Condition is "Good"  
PCI: 59



68 PRD Zones  
100 Miles of Road  
& 400 Culvert



FY 2023-24 Budget \$8.5M  
Annual Revenues of \$1.7M  
from Assessments, Special  
Taxes & Property Tax  
Revenue



<https://tinyurl.com/COSD-PRDZones>

# Permanent Road Division Program

Governed by:

- California Streets and Highways Code
- County Policy J-16 – County specific guidance for PRDs
- PRD Ordinance includes authorized services, maximum rate, and how to calculate each parcels charge
  - Rates approved by voters during formation
  - Board can increase rates within voter approved maximum rate





# PRD Maintenance

---

- Road Replacement
- Surface Seals
- Crack Filling and Sealing
- Drainage Culvert Repair/Replacement
- Roadside Berms
- Striping & Legends
- Road Sign Replacements
- Optional additional services:
  - Street Sweeping
  - Roadside Vegetation Trimming
  - Snow Plowing



# Why use a PRD Zone for road maintenance?

## Advantages

- Each Property Pays Fair Share of Maintenance Costs
- Collected Annually on Tax Roll
- Does Not Rely on Volunteers to Collect Funds or Manage Road Work
- Road Work Oversight by Experienced County Staff
- Road Work is Under Warranty for One Year
- Qualify for Emergency Repair Cost Reimbursements
- Loans Available for Emergency Repairs

## Disadvantages

- Formation Costs
- Administration Costs
- Maintenance Costs (Prevailing Wage, Public Procurement Requirements)



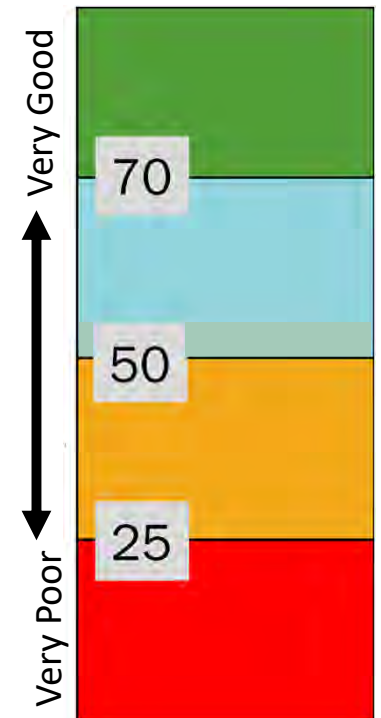
# Evaluating PRD Roads: Inspections & Pavement Condition Index

## PRD Road are evaluated by

- Periodic Staff Inspections
- Pavement Condition Index (PCI)

## What is PCI?

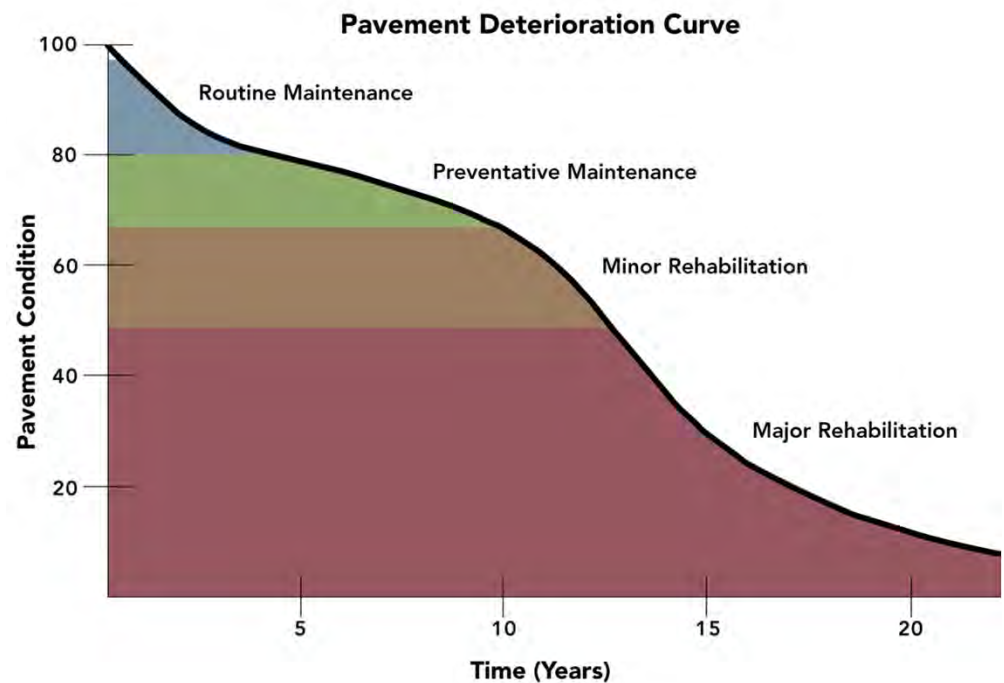
- Measures Road Smoothness & Pavement Surface Distress
- Scores Range Between 0 to 100
  - In the County of San Diego PCI levels above 70 indicate a road in "very good" condition, while PCI levels below 25 indicate a road in "very poor condition"





# Evaluating PRD Roads: Inspections & Pavement Condition Index

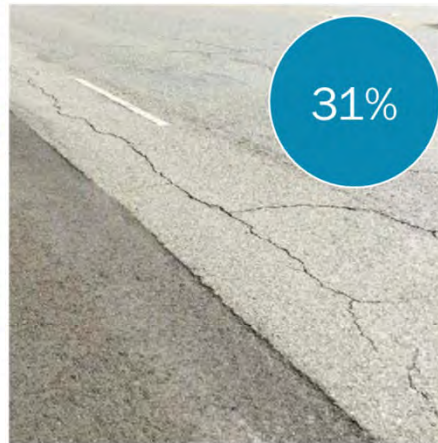
- As roads deteriorate, safety decreases and repair costs increase and the PCI drops significantly when maintenance is delayed.
- Routine maintenance for roads is almost four times less expensive than major road rehabilitation.



# Pavement Condition Index Level (PCI): 2023 PRD Zones PCI Levels



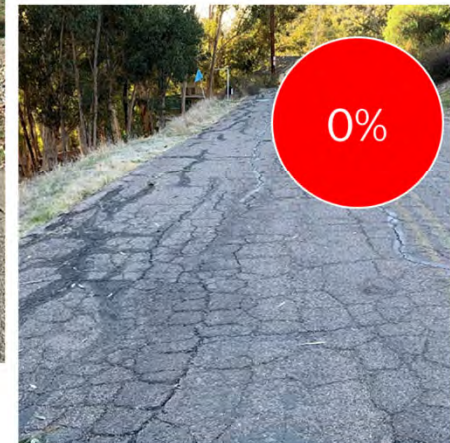
**Very Good**  
70 - 100



**Good**  
50 - 70



**Poor**  
25 - 50



**Very Poor**  
0 - 25

# Permanent Road Division Program

<https://tinyurl.com/COSD-PRDZones>

On our website you can find information on:

- Your property's Special Assessments/Taxes: [WebPayments \(sdttc.com\)](https://sdttc.com)
- Which roads in your community are maintained by DPW, including PRD maintained roads and Roads in the County Maintained Road System: [Interactive GIS Map of Roads Maintained by the County of San Diego](#)
- Your PRD Zone's current information including road committee members, miles of road and culverts maintained by the PRD Program, boundary maps, annual budget information, pavement condition index (PCI) data, and public meetings.

# Permanent Road Division Program



Managed by the Department of Public Works

- Jen Winfrey, Unit Manager
  - [Jennifer.Winfrey@SDCounty.ca.gov](mailto:Jennifer.Winfrey@SDCounty.ca.gov) or 858-495-5470
- Veronica Bateson, Land Use & Environmental Planner
  - [Veronica.Bateson@SDCounty.ca.gov](mailto:Veronica.Bateson@SDCounty.ca.gov) or 858-694-2691
- Service or Information Requests:
  - [SPDIST.LUEG@sdcounty.ca.gov](mailto:SPDIST.LUEG@sdcounty.ca.gov) or 858-694-2691
  - Requests will be routed to the correct Administration, Engineering or Field Staff including:
    - Administration: Veronica Bateson
    - Engineering: Iliana Peeva
    - Preventative Maintenance Coordinators: Jeff Stoffel, Dominic Anson, and Mike Anderson

# Permanent Road Division Program



Thank you for watching our presentation. If you have any questions, please visit our website or contact us.

[SPDIST.LUEG@sdcounty.ca.gov](mailto:SPDIST.LUEG@sdcounty.ca.gov)

858-694-2691