

Community Paramedicine Updates

COMMUNITY PARAMEDICINE / TAD STEERING COMMITTEE

BRIAN CHRISTISON, JESSICA GALL, TYLER MEICK, CHRISTIAN BEY,
AMANDA KEATING, NATE BURGER

WHERE WE'VE BEEN



2014
OSHPD Pilots

2019
OSHPD Pilot extension

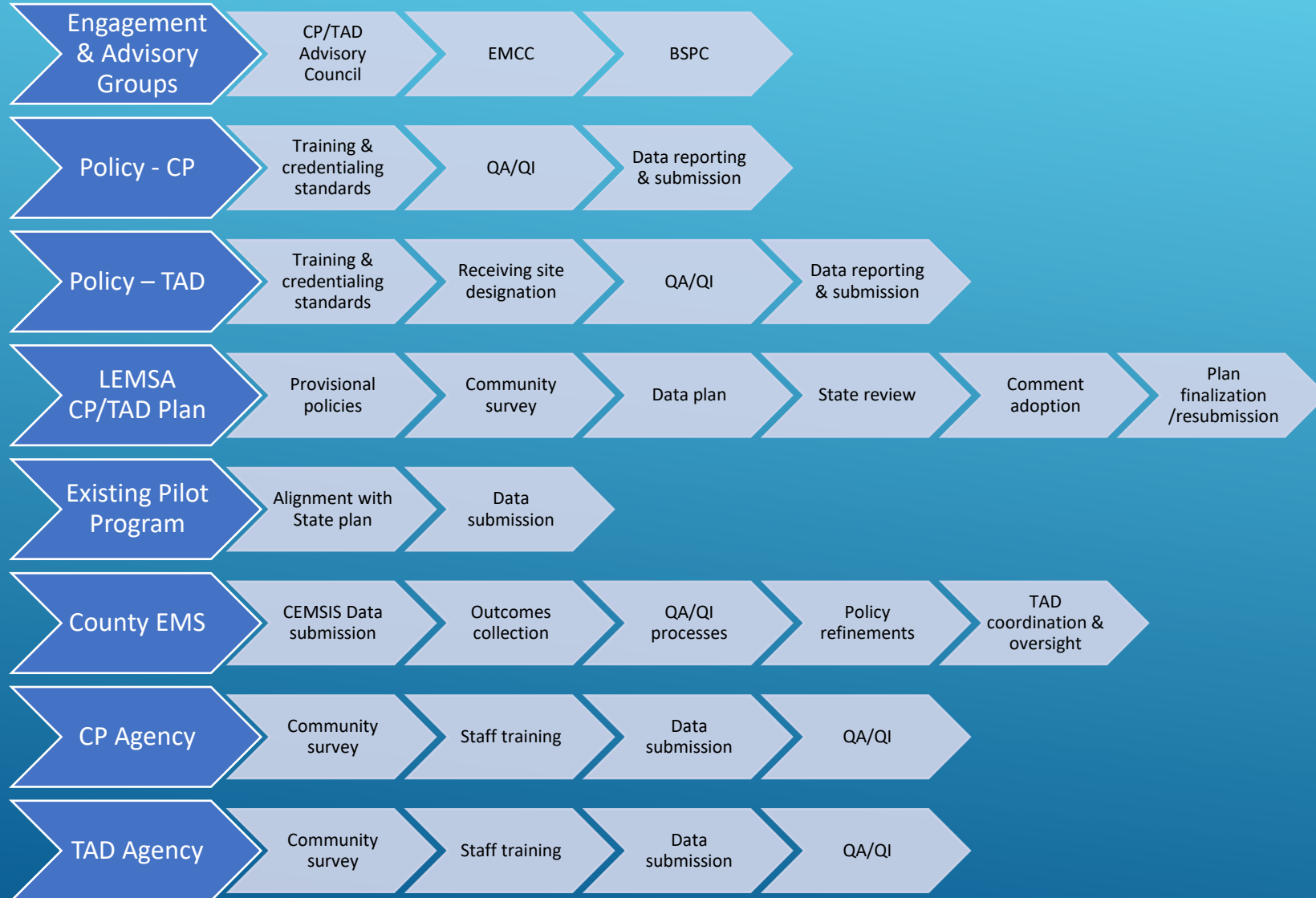
2022
EMSA Chapter 5 Regulations

2015
CEMSIS Established
AB-1129/ HSC
1797.227

2020
CP/TAD Authority
AB-1544/HSC
1797.259 & .273

2023
LEMSA CP Advisory Council

WHERE WE ARE



WHERE WE'RE GOING

2023 - Fall

- Provisional policies
- State plan review
- CEMSIS data

2024 – Spring

- Provisional policy refinements
- EMCC/BSPC updates
- TAD site designation

2024 – Fall

- Provisional policy refinements
- EMCC/BSPC updates

2023 - Winter

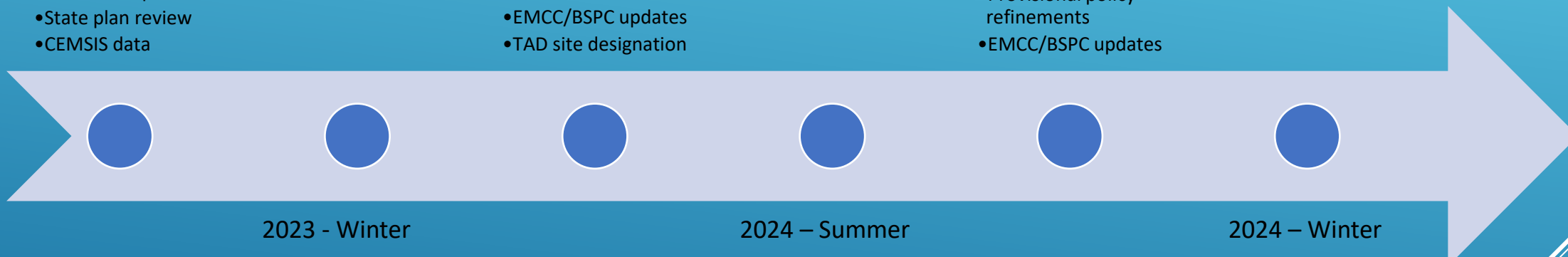
- Ongoing community surveys
- Pilot program transition to standing program
- EMCC/BSPC updates

2024 – Summer

- Provisional policy refinements
- EMCC/BSPC updates

2024 – Winter

- Provisional policy conversion to standing



CURRENT POLICY UNDER REVIEW

- TAD-908 Triage to Alternate Destination Paramedic Initial Accreditation, Reaccreditation and Reinstatement
- CP-907 Community Paramedic Initial Eligibility Renewal and Reinstatement
- CP-906 Community Paramedic Training Program Requirements and Procedures for Approval Reapproval
- CP-906a Community Paramedicine Training Program Application
- CP-906b Community Paramedicine Training Program Student Eligibility
- TAD-919 Triage to Alternate Destination Paramedic Training Program Requirements and Procedures for Approval Reapproval
- TAD-919a Triage to Alternate Destination Training Program Application
- TAD-919b Triage to Alternate Destination Paramedic Training Program Student Eligibility
- TAD-912 Triage to Alternate Destination
- TAD-1006 Medical Clearance Criteria Screening Tool For Transport to VA ED
- CP-910 Directly Observed Therapy for Tuberculosis
- CP-1002 Directly Observed Therapy for Tuberculosis Adult
- CP-1002 Directly Observed Therapy for Tuberculosis Pediatric