

Cardiac Arrest Outcomes & Bystander CPR

Emergency Medical Care Committee (EMCC)

November 21, 2024

Colin King, Epidemiologist II
San Diego County EMS Office
colin.king@sdcounty.ca.gov



COUNTY OF
SAN DIEGO

County of San Diego CARES Data, 2019-2023



Non-Traumatic Etiology Survival Rates

Overall

n = 10464

9.1%

Bystander Wit'd

n = 2920

16.0%

Unwitnessed

n = 6547

4.9%

Utstein (1)

n = 859

35.6%

Utstein Bystander (2)

n = 618

38.2%

Bystander Intervention Rates (3)

CPR

n = 8125

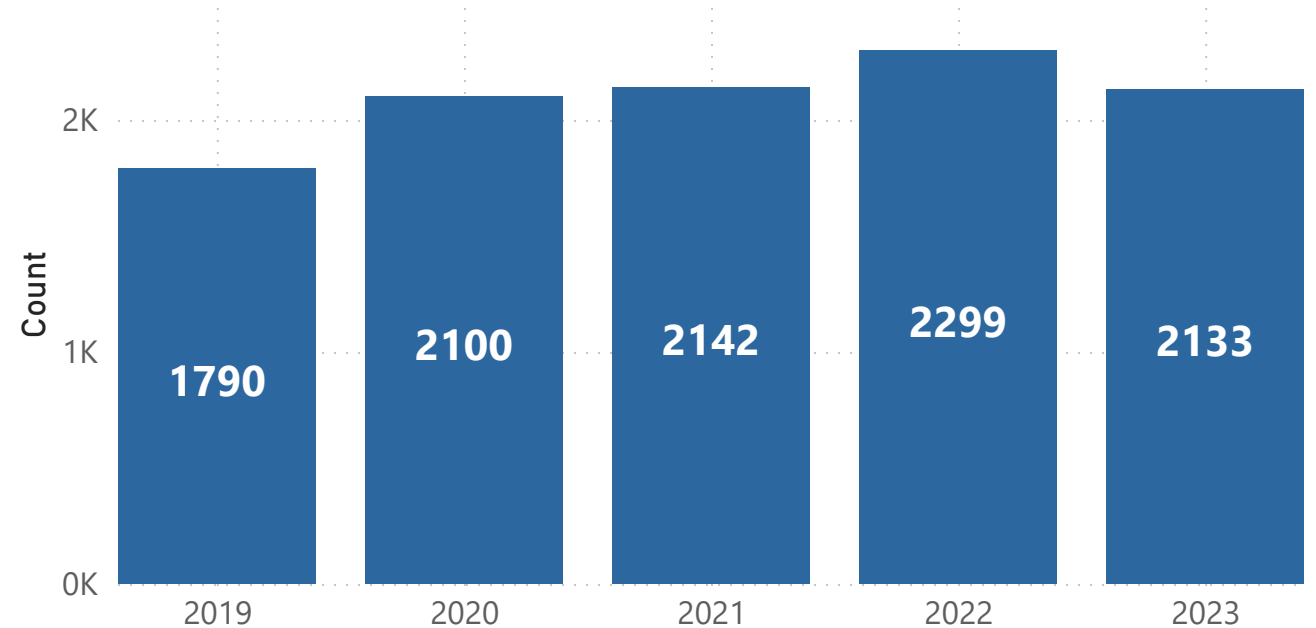
49.4%

Public AED Use

n = 1709

8.4%

Non-Traumatic Cardiac Arrests (2019-2023)



Source: Cardiac Arrest Registry to Enhance Survival (CARES), 2019-2023

¹Utstein: Witnessed by bystander and found in shockable rhythm.

²Utstein Bystander: Witnessed by bystander, found in shockable rhythm, and received some bystander intervention (CPR and/or AED application).

³Bystander CPR rate excludes 911 Responder Witnessed, Nursing Home, and Healthcare Facility arrests. Public AED Use rate excludes 911 Responder Witnessed, Home/Residence, Nursing Home, and Healthcare Facility arrests.

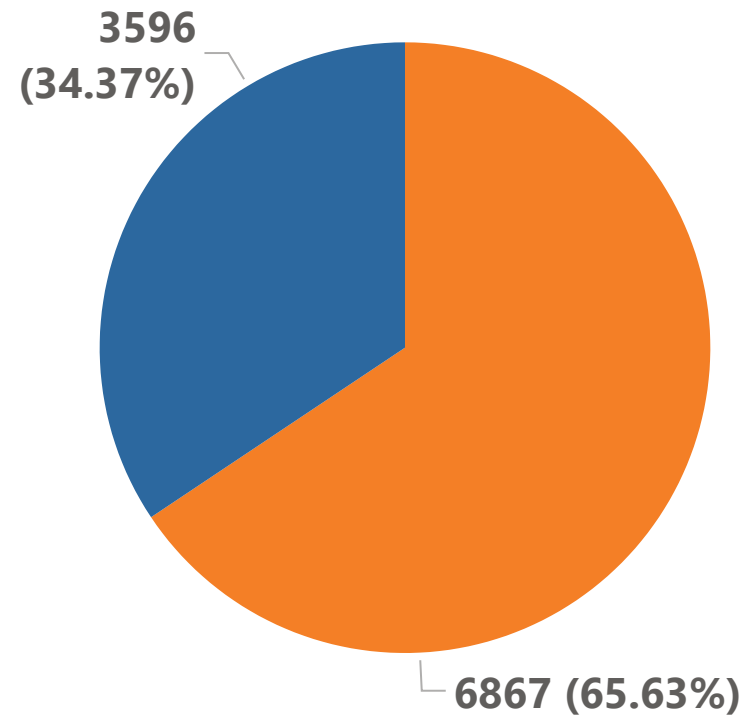
Note: Data excludes Chula Vista, Coronado, and Escondido Fire Departments
2023 data excludes Mercy Medical

Cardiac Arrest Demographics, 2019-2023



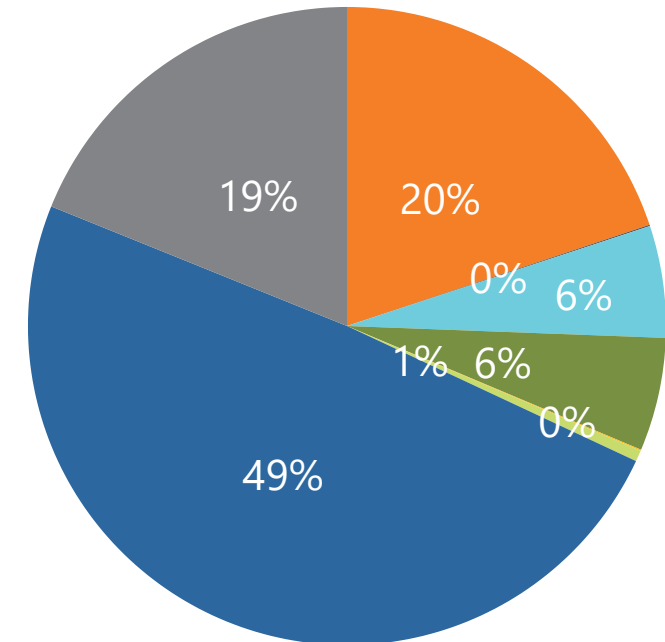
Cardiac Arrests by Gender

● Male ● Female



Cardiac Arrests by Race

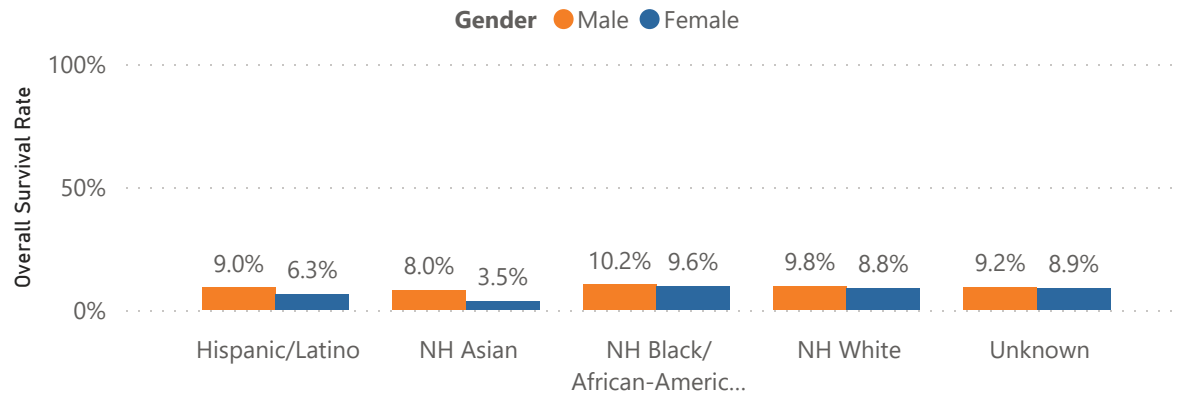
- Hispanic/Latino
- NH American-Indian/ Alaska N...
- NH Asian
- NH Black/ African-American
- NH Multi-Racial (Other)
- NH Native Hawaiian/ Pacific Isl...
- NH White
- Unknown



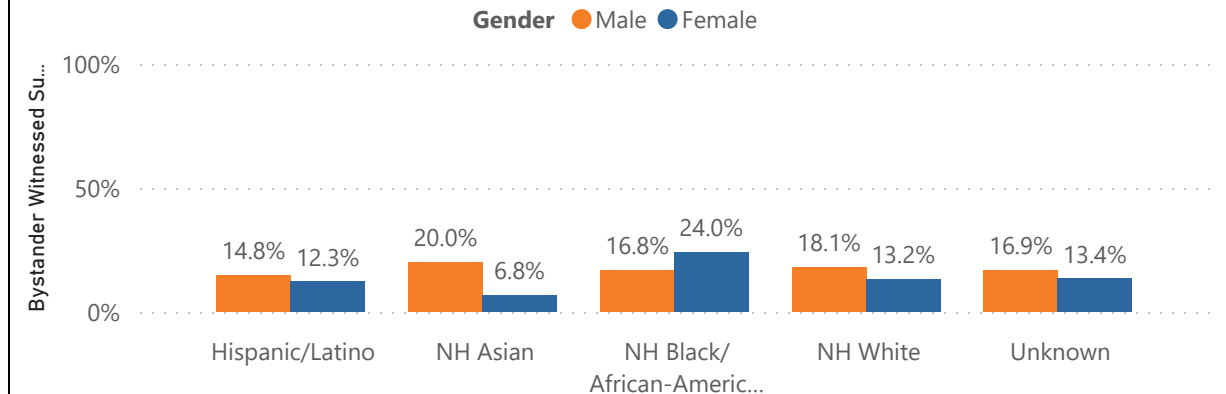
Non-Traumatic Etiology Survival Rates by Demographic



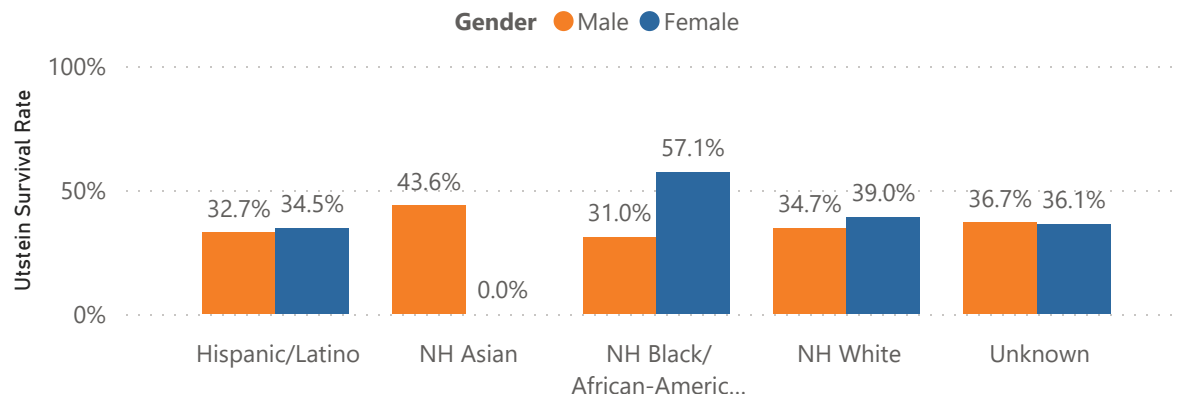
Overall Survival Rate by Race and Gender



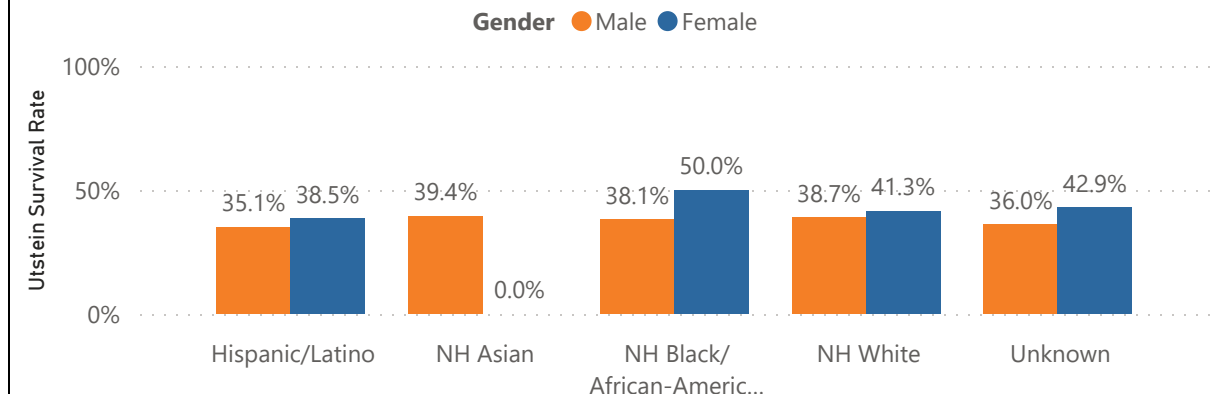
Bystander Witnessed Survival Rate by Race and Gender



Utstein Survival Rate by Race and Gender



Utstein Bystander Survival Rate by Race and Gender

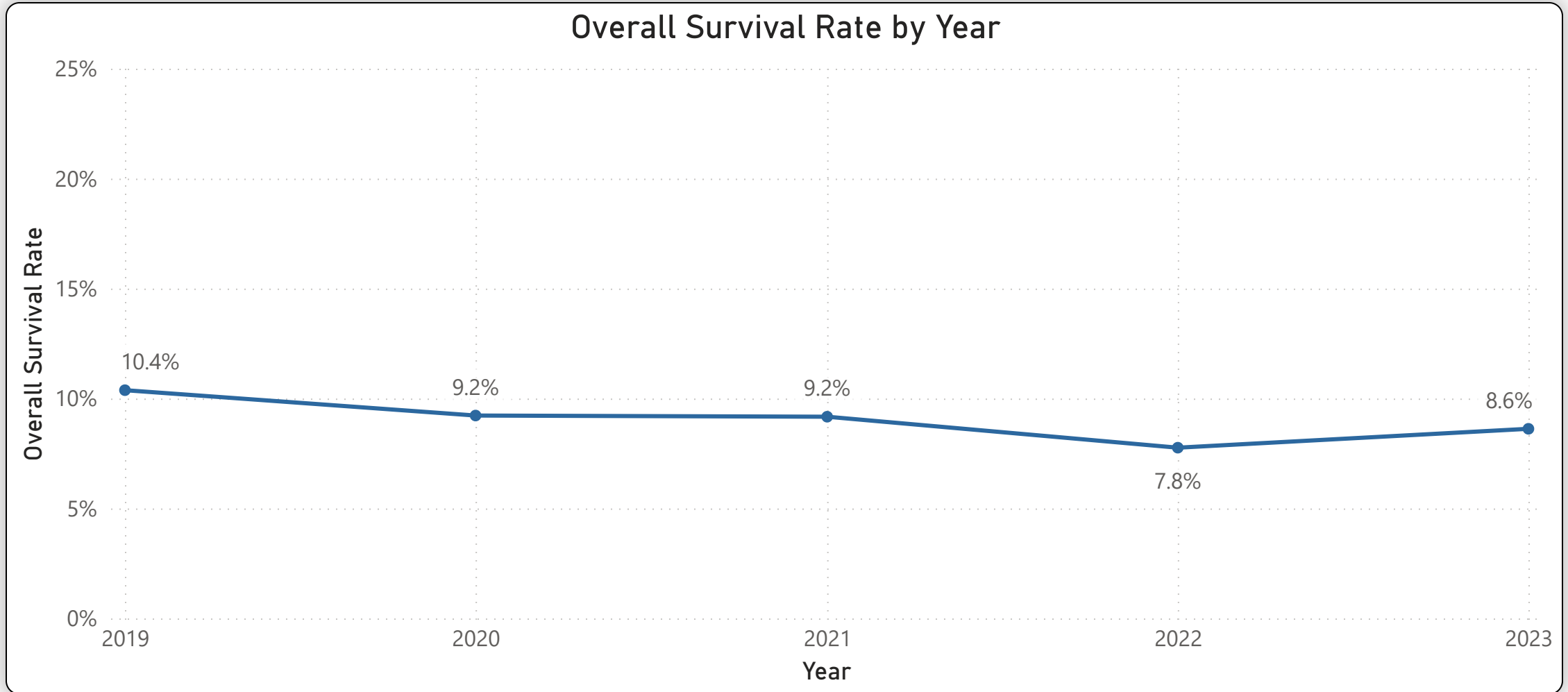


Source: Cardiac Arrest Registry to Enhance Survival (CARES), 2019-2023

NH = Non-Hispanic

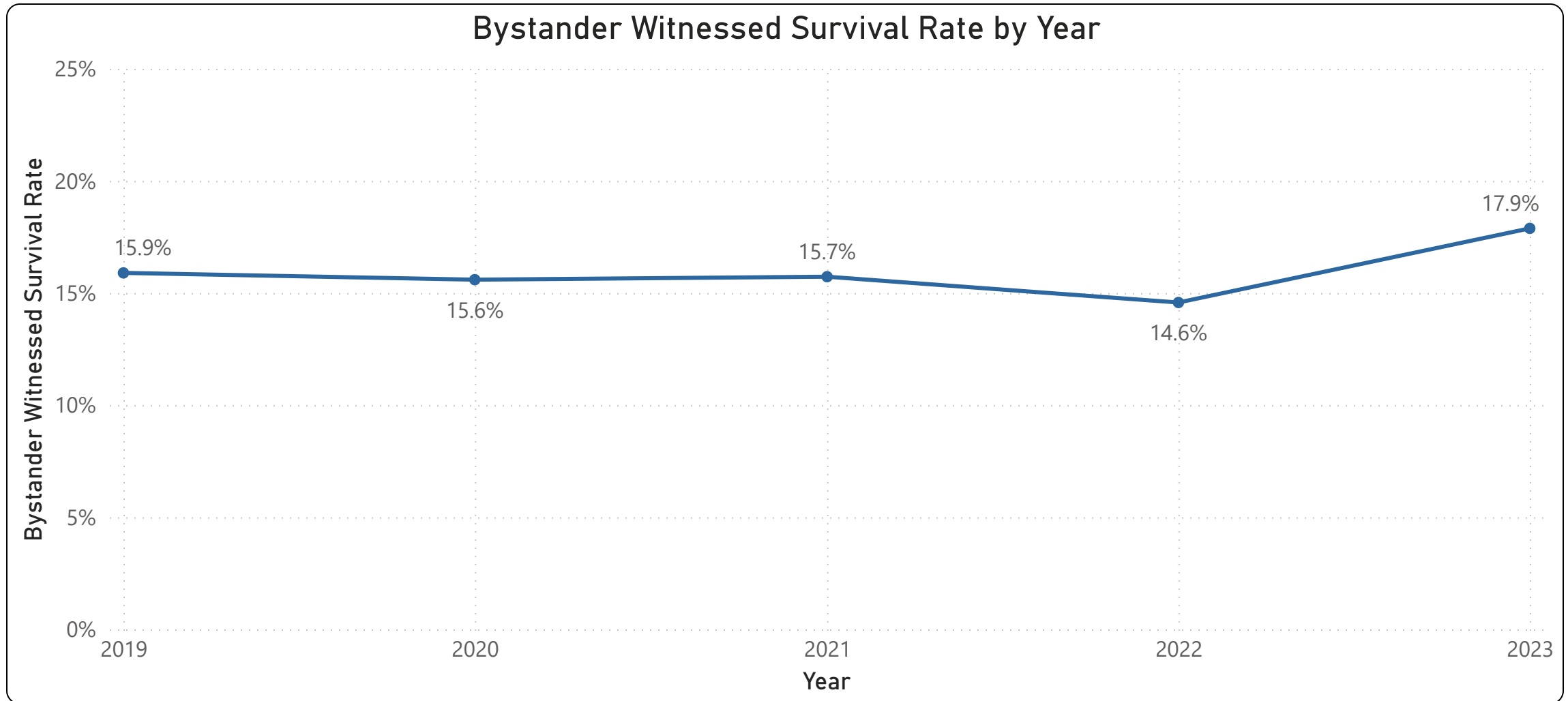
NH American-Indian/Alaska Native, NH Native Hawaiian/Pacific Islander, and NH Multi-Racial excluded due to n < 5

County of San Diego Overall Cardiac Arrest Survival Rates



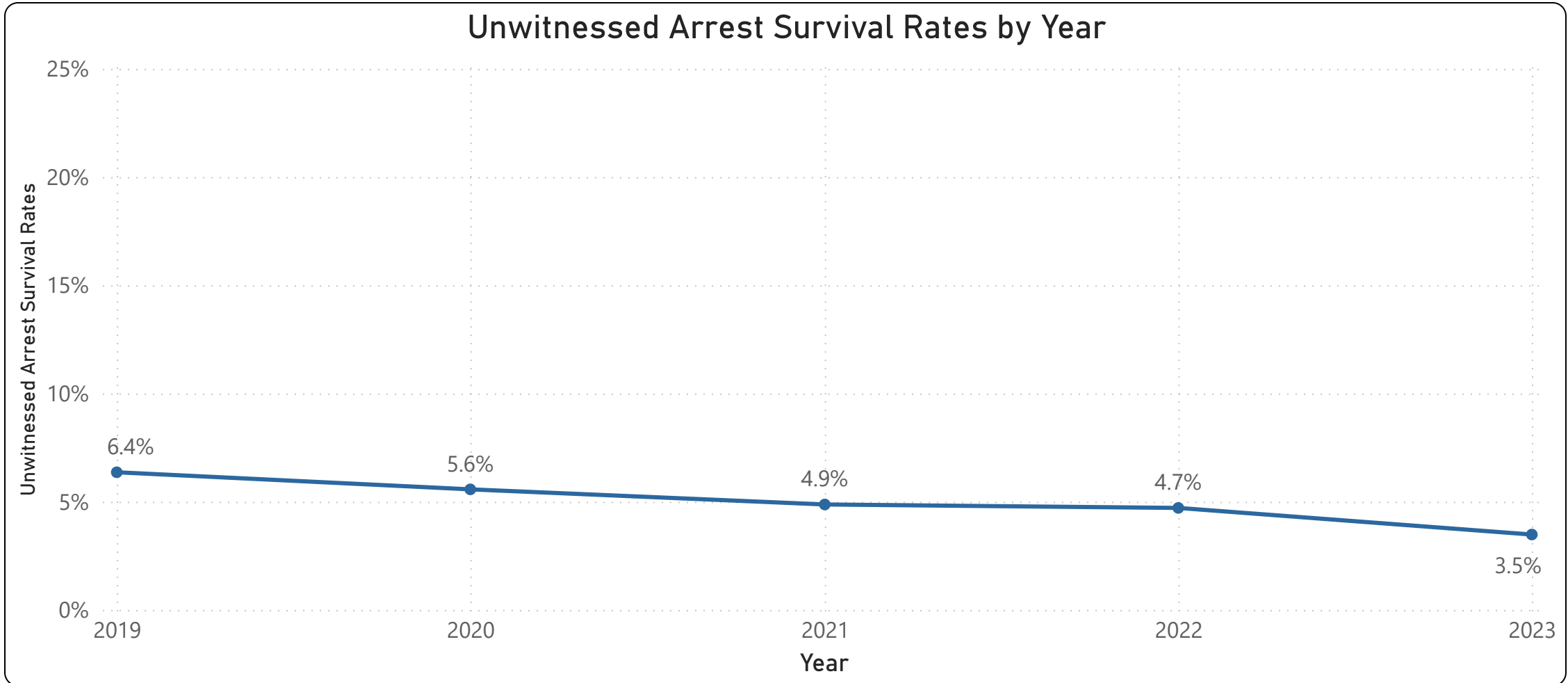
Source: Cardiac Arrest Registry to Enhance Survival (CARES), 2019-2023

County of San Diego Bystander Witnessed Survival Rates



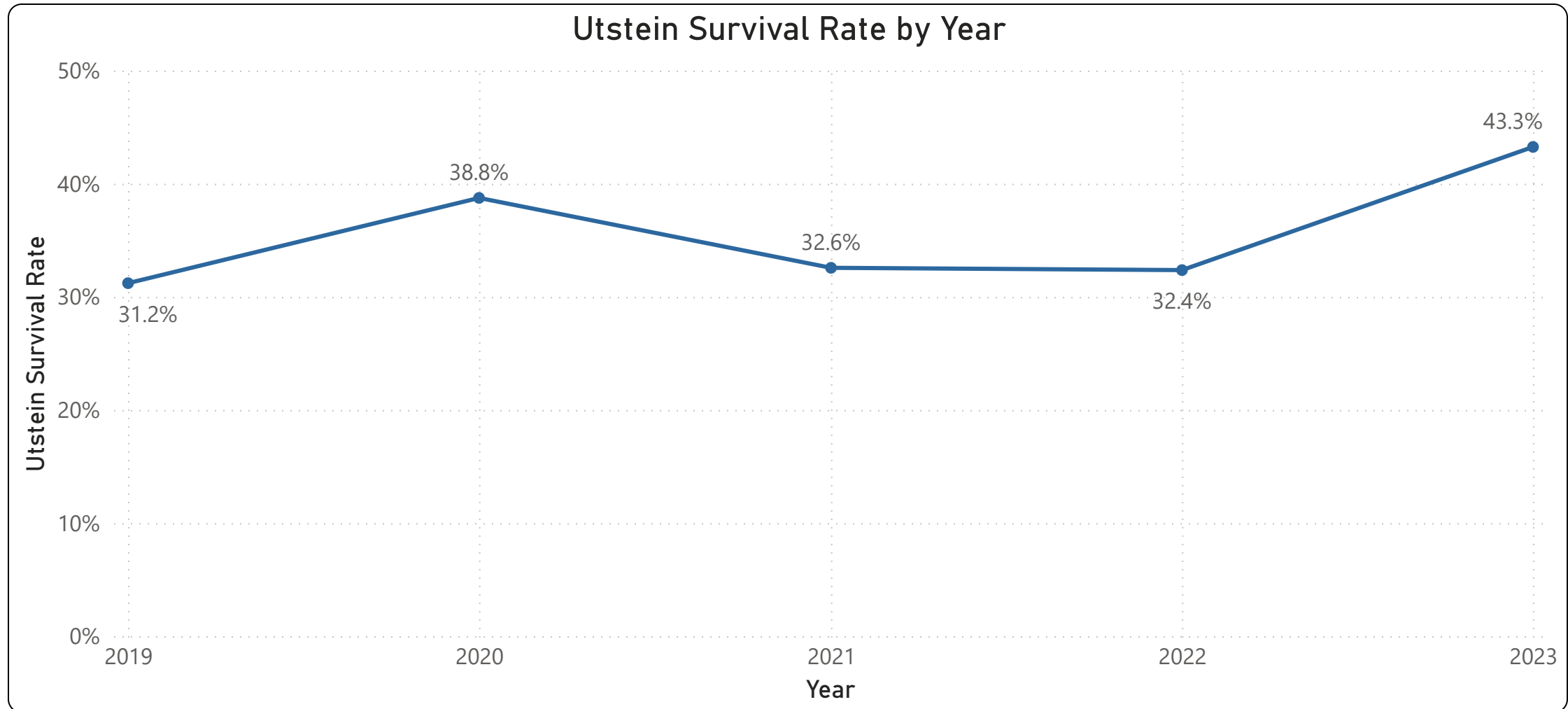
Source: Cardiac Arrest Registry to Enhance Survival (CARES), 2019-2023

County of San Diego Unwitnessed Arrest Survival Rates



Source: Cardiac Arrest Registry to Enhance Survival (CARES), 2019-2023

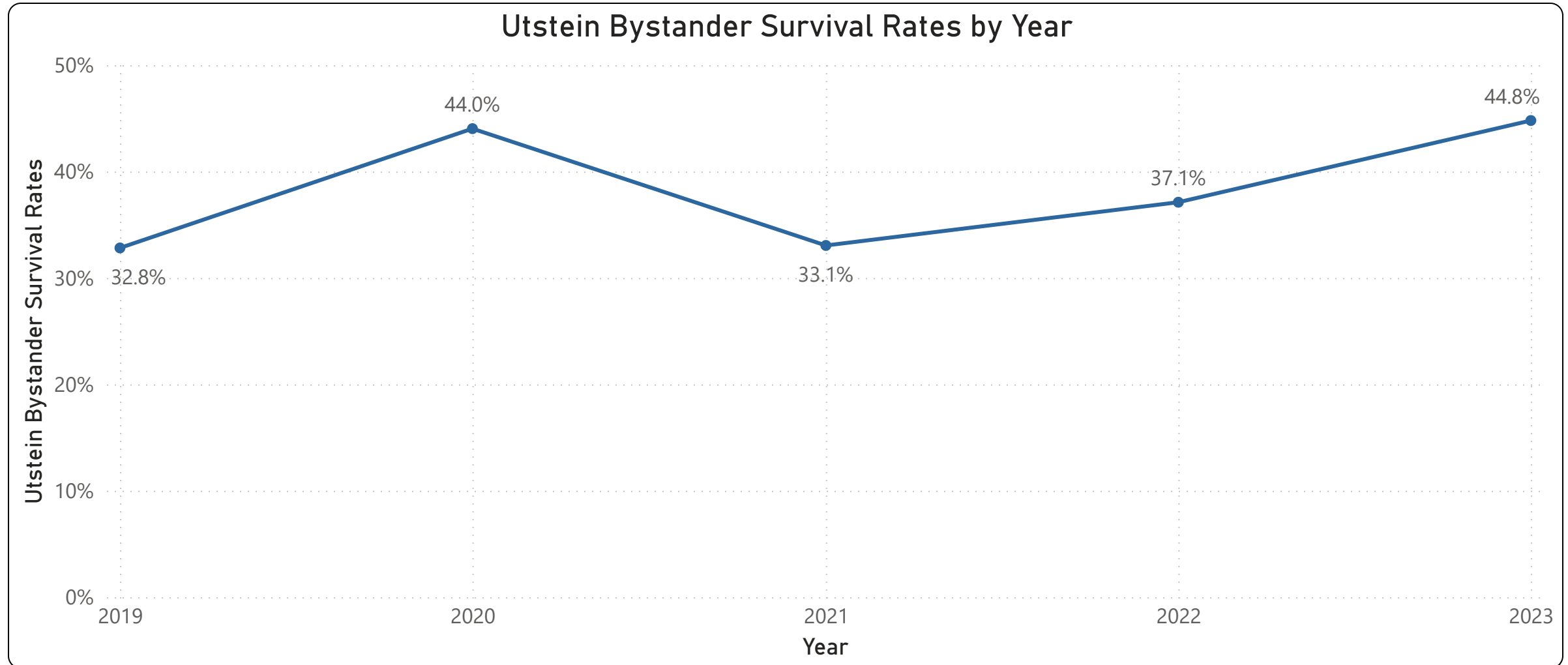
County of San Diego Utstein Survival Rates



Source: [Cardiac Arrest Registry to Enhance Survival \(CARES\), 2019-2023](#)

Utstein: Witnessed by bystander and found in shockable rhythm.

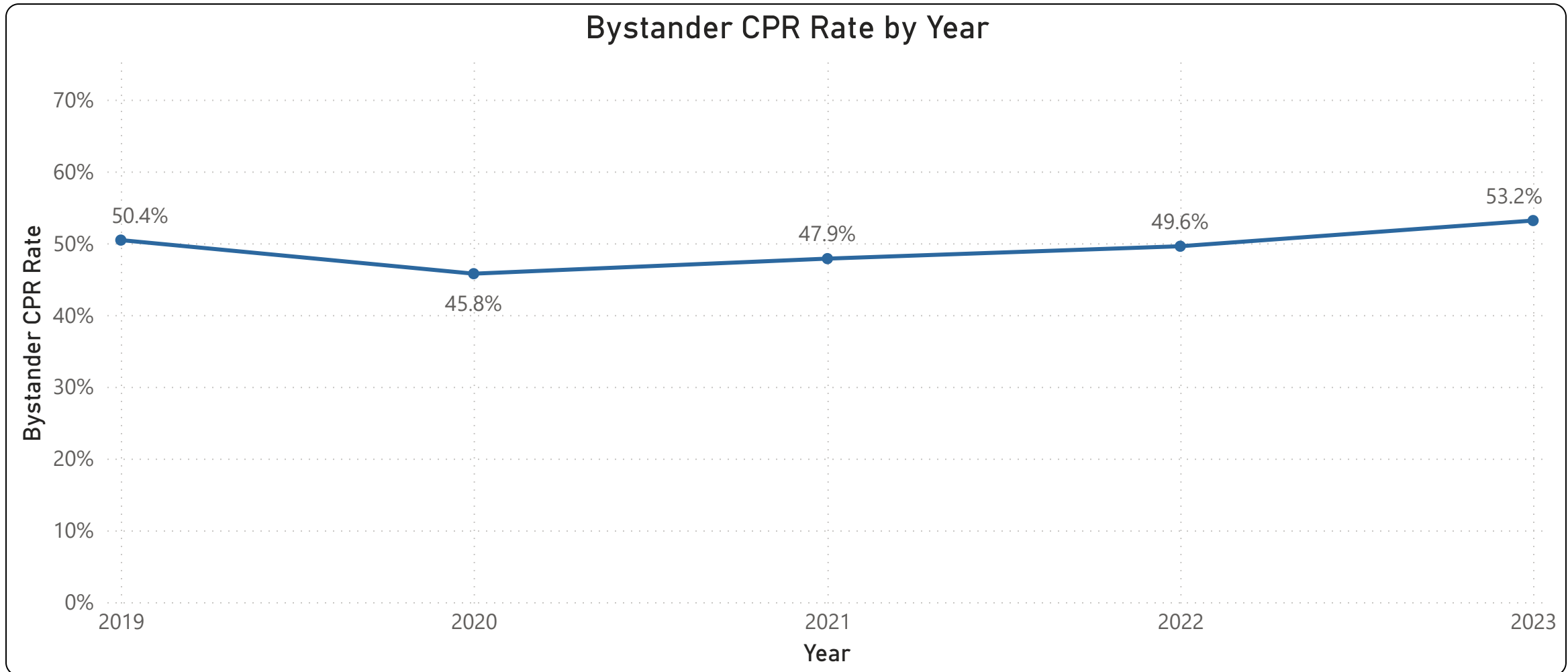
County of San Diego Utstein Bystander Survival Rates



Source: [Cardiac Arrest Registry to Enhance Survival \(CARES\), 2019-2023](#)

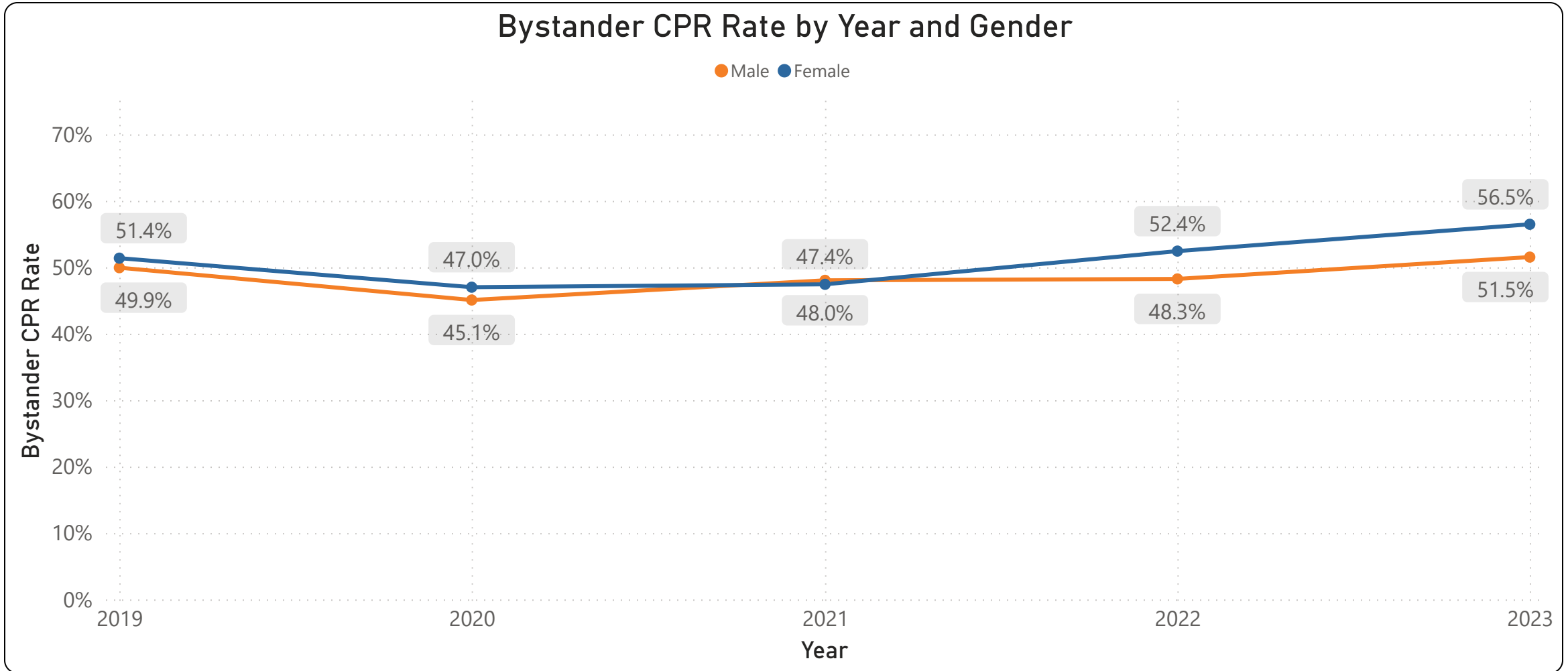
Utstein Bystander: Witnessed by bystander, found in shockable rhythm, and received some bystander intervention (CPR and/or AED application).

County of San Diego Bystander CPR Rates



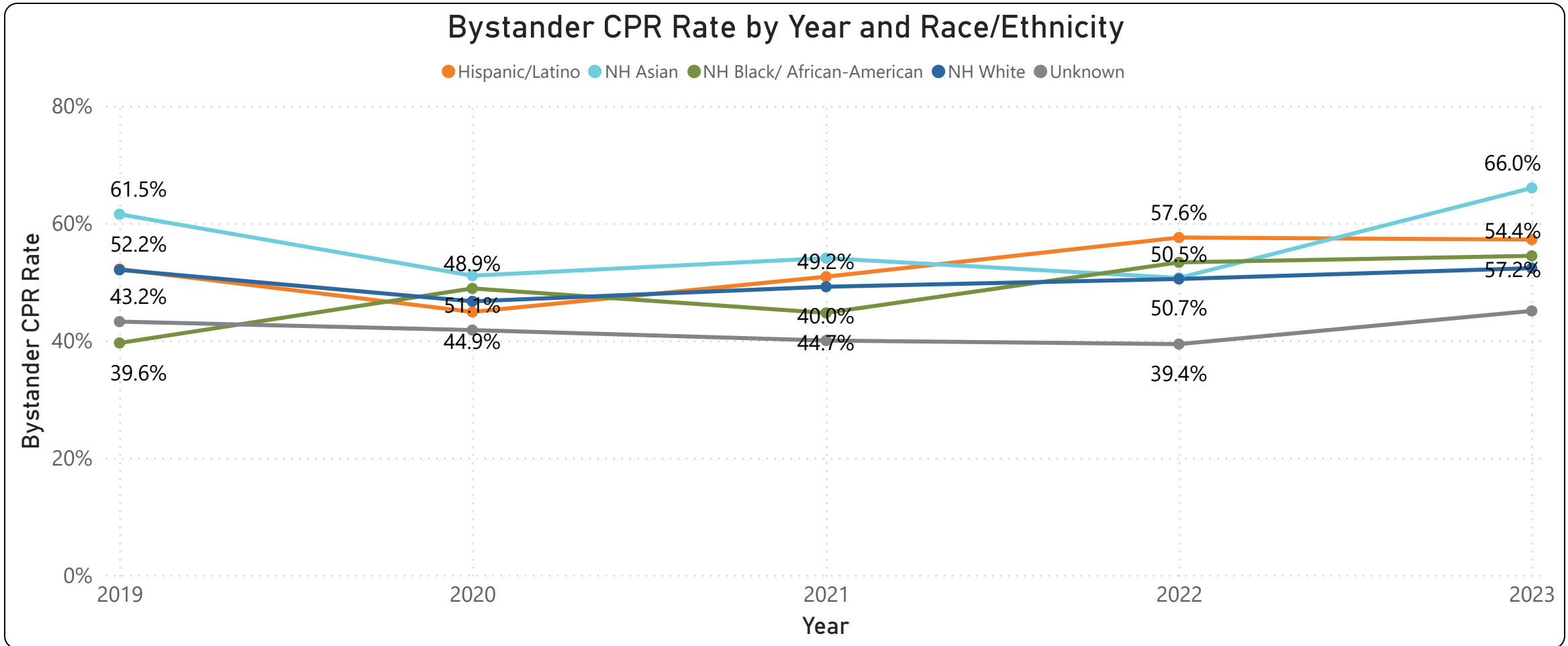
Source: [Cardiac Arrest Registry to Enhance Survival \(CARES\), 2019-2023](#)
Bystander CPR rate excludes 911 Responder Witnessed, Nursing Home, and Healthcare Facility arrests.

County of San Diego Bystander CPR Rates by Gender



Source: [Cardiac Arrest Registry to Enhance Survival \(CARES\), 2019-2023](#)
Bystander CPR rate excludes 911 Responder Witnessed, Nursing Home, and Healthcare Facility arrests.

County of San Diego Bystander CPR Rates by Race/Ethnicity



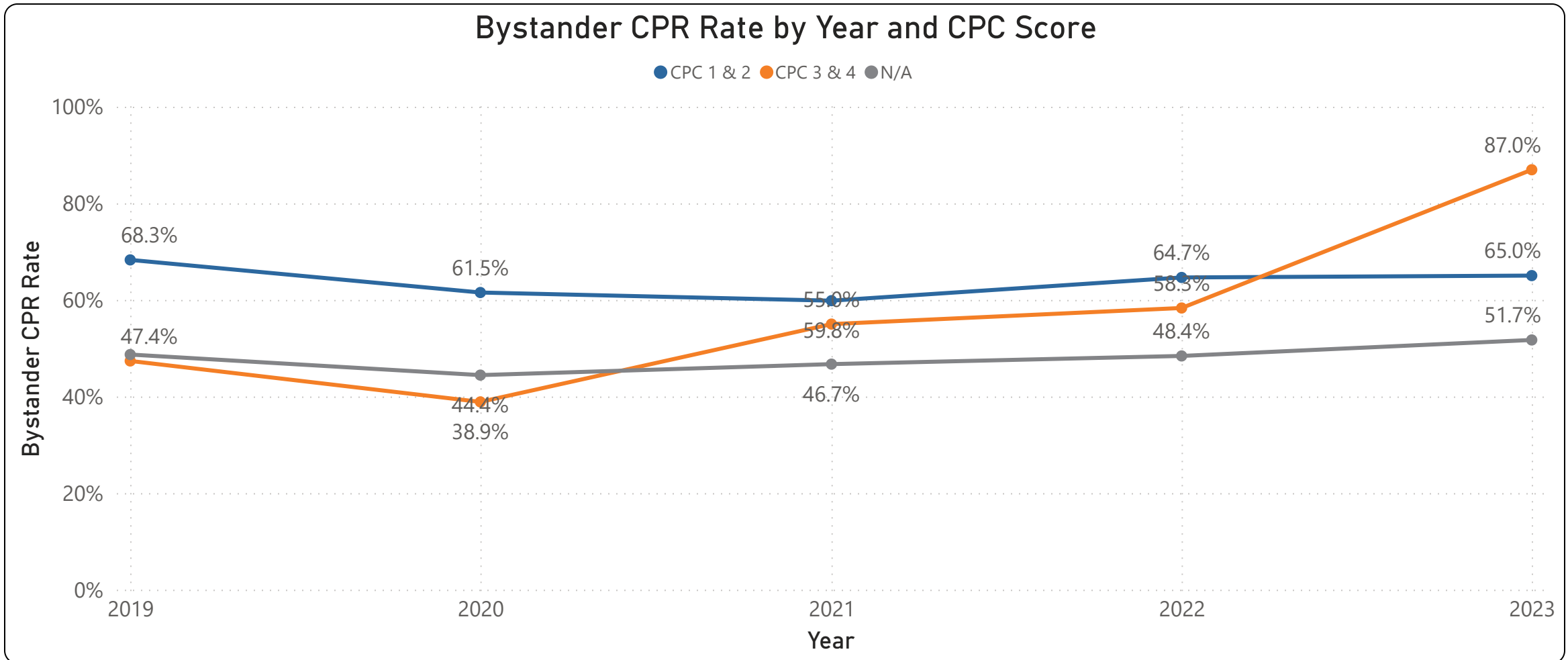
Source: [Cardiac Arrest Registry to Enhance Survival \(CARES\), 2019-2023](#)

Bystander CPR rate excludes 911 Responder Witnessed, Nursing Home, and Healthcare Facility arrests.

NH = Non-Hispanic

NH American-Indian/Alaska Native, NH Native Hawaiian/Pacific Islander, and NH Multi-Racial excluded due to n < 5

County of San Diego Bystander CPR Rates by CPC Score

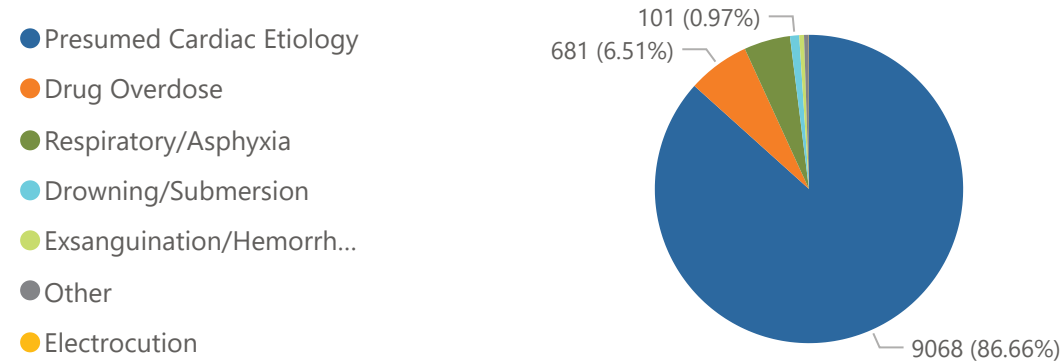


Source: [Cardiac Arrest Registry to Enhance Survival \(CARES\), 2019-2023](#)
Bystander CPR rate excludes 911 Responder Witnessed, Nursing Home, and Healthcare Facility arrests.

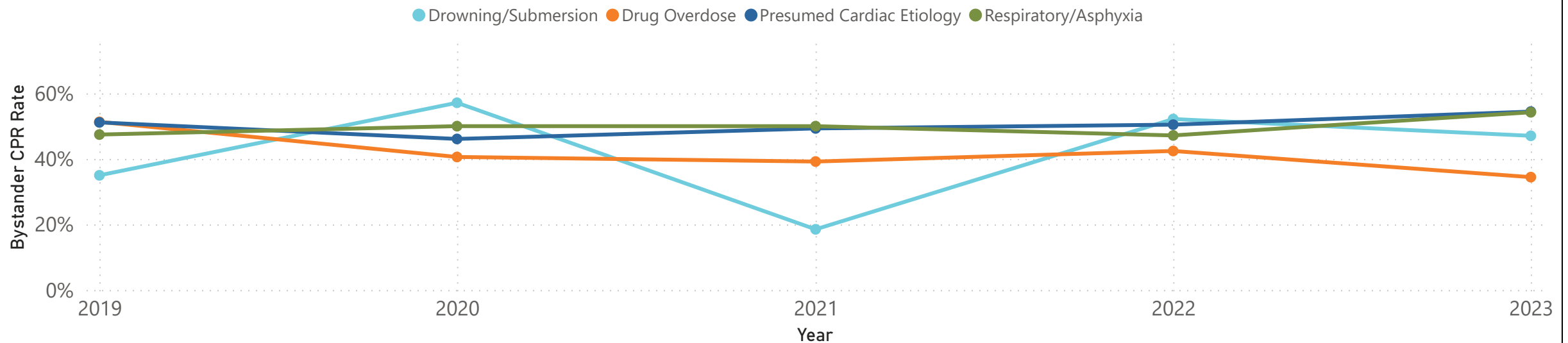
County of San Diego Bystander CPR Rates by Etiology



Presumed Cardiac Arrest Etiology (2019-2023)



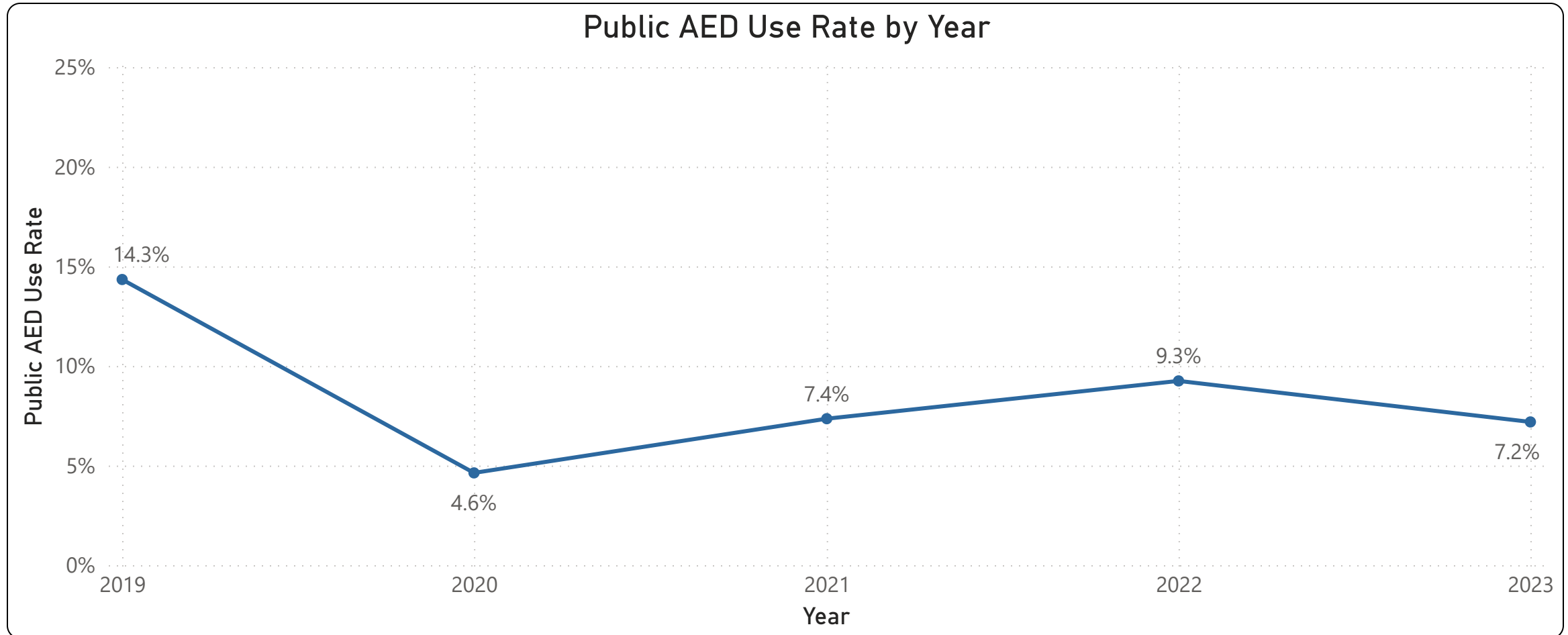
Bystander CPR Rate by Year and Cardiac Arrest Etiology



Source: Cardiac Arrest Registry to Enhance Survival (CARES), 2019-2023

Bystander CPR rate excludes 911 Responder Witnessed, Nursing Home, and Healthcare Facility arrests.
Electrocutation, Exsanguination/Hemorrhage, and Other Cardiac Arrest Etiology excluded.

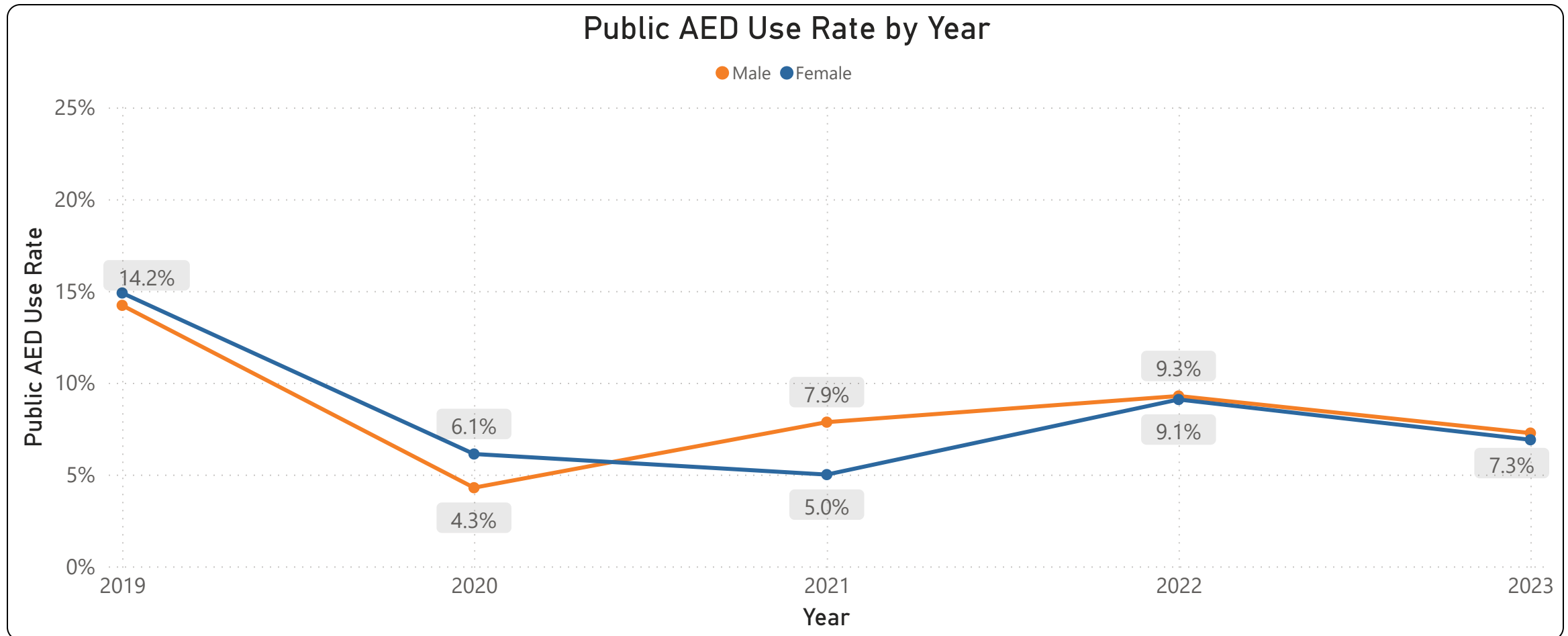
County of San Diego Public AED Use Rate



Source: [Cardiac Arrest Registry to Enhance Survival \(CARES\), 2019-2023](#)

Public AED Use rate excludes 911 Responder Witnessed, Home/Residence, Nursing Home, and Healthcare Facility arrests.

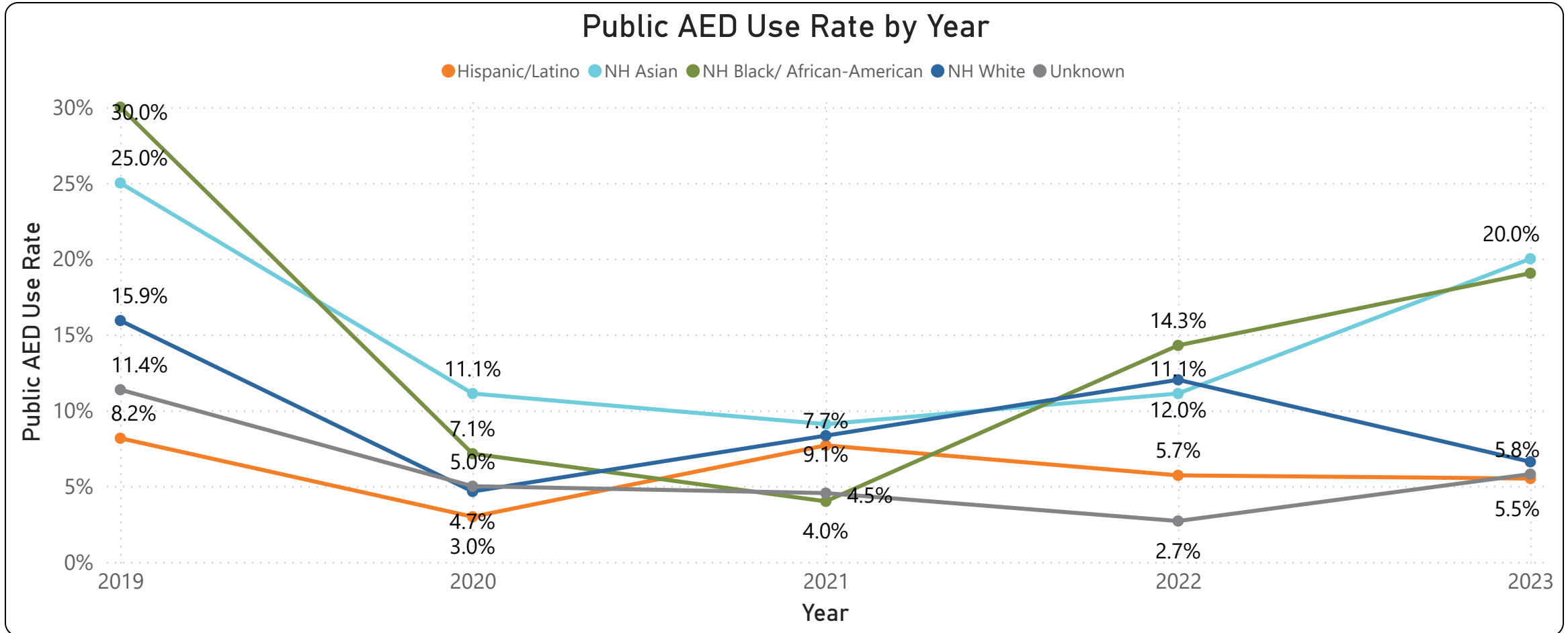
County of San Diego Public AED Use Rate



Source: [Cardiac Arrest Registry to Enhance Survival \(CARES\), 2019-2023](#)

Public AED Use rate excludes 911 Responder Witnessed, Home/Residence, Nursing Home, and Healthcare Facility arrests.

County of San Diego Public AED Use Rate



Source: [Cardiac Arrest Registry to Enhance Survival \(CARES\), 2019-2023](#)

Public AED Use rate excludes 911 Responder Witnessed, Home/Residence, Nursing Home, and Healthcare Facility arrests.

NH = Non-Hispanic

NH American-Indian/Alaska Native, NH Native Hawaiian/Pacific Islander, and NH Multi-Racial excluded due to n < 5

UC San Diego
HERBERT WERTHEIM
SCHOOL OF PUBLIC HEALTH AND
HUMAN LONGEVITY SCIENCE



Become a Training Partner!



Report a Training!



More information at ReviveSurvive.ucsd.edu