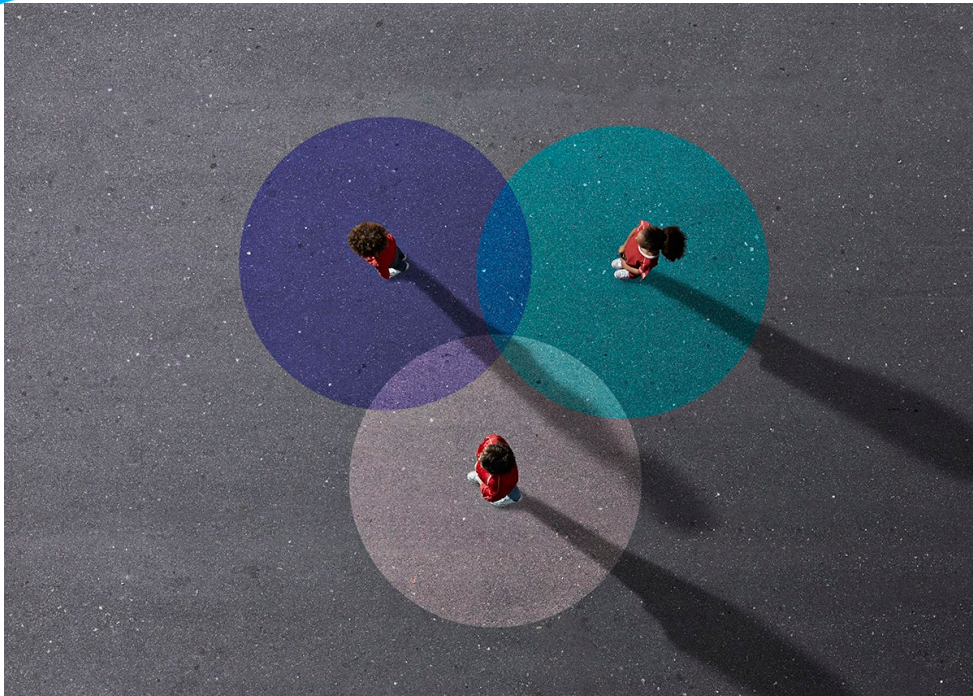


# EMCC Subcommittees

January 23, 2025



# EMCC Subcommittees



- Subcommittees established in bylaws:
  1. Prehospital/Hospital
  2. Education and Research
  3. Disaster Planning





# EMCC Subcommittees

There are three EMCC subcommittees and each EMCC member serves on at least one subcommittee. Subcommittee membership is appointed at the first EMCC meeting of the calendar year. Each of three subcommittees consists of at least five members.

## Prehospital/Hospital

- SD County Ambulance Association
- SD County Fire Chiefs Association
- SD County Medical Society
- County Paramedic Agencies Committee
- District 2
- Base Hospital Nurse Coordinators Committee

## Education and Research

- Emergency Nurses Association
- Military Agencies
- District 1
- District 3
- District 4
- District 5

## Disaster Planning

- American Red Cross
- Hospital Association of SD and Imperial Counties
- Law Enforcement Agencies
- SD County Fire Districts Association
- SD County Paramedic Association

# Subcommittee Membership

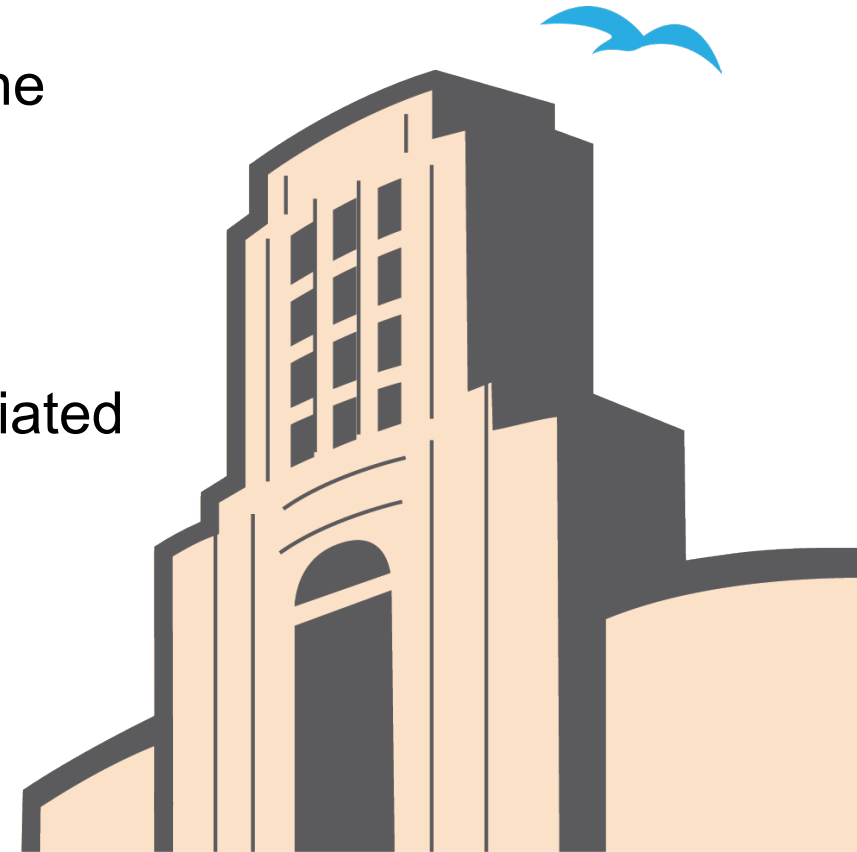
- Each Member of EMCC shall serve on at least one Subcommittee
- Membership is appointed at the first EMCC meeting of the calendar year
- Each of the three subcommittees shall consist of at least five members





# Prehospital/Hospital Subcommittee

- Prehospital/Hospital (Membership/Liaison with Other Subcommittees)
  - Reviews issues and/or policies that bridge between the prehospital/hospital environment
  - Serves as a liaison to other committees in healthcare
  - Makes recommendations as needed on issues associated with membership on EMCC





# Education and Research Subcommittee

- Education and Research (Budget/Legislation)
  - Reviews EMS training institutions, special training requirements, special study/research documents and pilot programs
  - Considers items of budget and/or if any pending or passed legislation impacts the EMS delivery system





# Disaster Planning Subcommittee

- Disaster Planning (Bylaws)
  - Reviews emergency planning, exercises, the coordination of emergency activities in healthcare institutions, and interaction with the Medical Health Operational Area Coordinator (MHOAC)
  - Serves as the Bylaws Committee for EMCC and makes recommendations on any pending bylaw changes before EMCC



# Officers Service and Selection

- Chair and Vice Chair of each Subcommittee is elected at its first meeting (only appointed members)
- Vice Chairperson may substitute in the absence of the Chairperson
- In the event of removal or resignation of Chairperson, Vice Chairperson takes their place
  - Subcommittee will then elect a new Vice Chairperson





# Questions?

