

Community Program Planning (CPP) 2022 & 2023 Community Feedback



Recommendations from the community to improve BHS' CE efforts

(Previously noted in April 2024 BHAB Director's Report)

- Align locations of event and health promotion/education programming as much as possible to communities with highest needs based on available data and community input
- Connect with community and faith-based organizations, Community Health Workers (CHWs), peers, and others with lived experience and partner with them for health promotion planning and programming
- Host more events and activities where youth and families go, including outdoor spaces and places of worship
- Coordinate more activities that focus on enhancing individuals' and families' behavioral health knowledge and mental wellness, and have more events focused on empathy and building up socio-emotional competence
- Host a higher volume of smaller-scale, tailored activities throughout the year in addition to larger events/discussions
- Include food and other giveaways for participants and adjust activity times to occur in the late afternoon or early evening
- Provide more frequent "report backs" and timelines so participants know when and how their community input is being considered and/or implemented
- Seek additional opportunities to connect and support Black, Indigenous, and People of Color (BIPOC) to behavioral health resources and services
- Encourage pre-registration mechanisms for activities to support planning, coordination, and identification of participant language needs to ensure accessibility
- Schedule community opportunities far enough in advance to support a minimum of two weeks of marketing efforts across multiple communication platforms

BHS Communication & Engagement (C&E) Community Engagement (CE)



Key Functions of Team Members

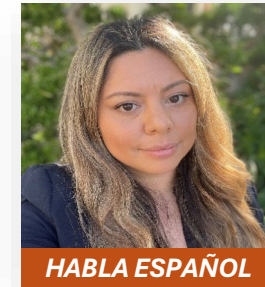
- Attend and/or coordinate and lead events and meetings with the community
- Complete outreach and presentation activities to share about the department and related facilities, services, resources, and initiatives
- Collaborate with peers and partners internally and externally to learn about countywide activities, support BHS priorities, and augment and upscale efforts
- Develop, implement, and manage tailored health promotion/education programming based on input received from the community
- Document and report learnings from community engagement throughout the year
- Assess and optimize input gathering and bi-directional information sharing
- Design, order, inventory, and distribute community engagement outreach/education and promotional materials
- Oversee related contracts and/or special projects



Danny Romero

Manager

Agency Prog and Operations Manager
**Health Promotion Programming;
Community Experience Partnership;
Opioid Settlement Budgeted Activities**



Maria Molina

Supervisor

Administrative Analyst III



Dania Barroso-Conde

Manager

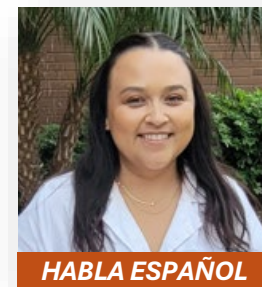
Program Coordinator
**Behavioral Health Advisory Board
Coordination; MHSA/BHSA
Community Program Planning
Activities; Planning for Leg/Policy**



Evan Hodges

Supervisor

Administrative Analyst III



Lilly Payton

Manager

Program Coordinator
**Specialized Outreach and Education;
Unit Ordering & Reporting Activities;
Cultural Competence and Quality
Review**



Ran Tao

Supervisor

Administrative Analyst III

BHS Communication & Engagement (C&E) Community Engagement (CE)



Full-Time Team Members (as of 06/27/24)

- Staff work across the county, but have primary regional assignments and key topics and/or stakeholders they engage
- Community Health Workers (CHWs) outstationed with HSEA Department of Homeless Solutions and Equitable Communities (HSEC) integrated beginning February 2024



Erica Calderon-Vargas
Administrative Analyst I

North; Health Promotion;
Outreach/Education (O&E)



Muquxi La
Administrative Analyst II

North; Health Promotion;
O&E



A'Yanna Hatton
Community Health Worker

North; O&E
HSEC Outstation: N. Inland



Michelle Espinoza
Community Health Worker

North; O&E
HSEC Outstation: N. Coastal



Maya Shahar
Administrative Analyst II

East & Central; Health
Promotion; O&E



Oscar Rendon
Community Health Worker

East & Central; O&E
HSEC Outstation: East



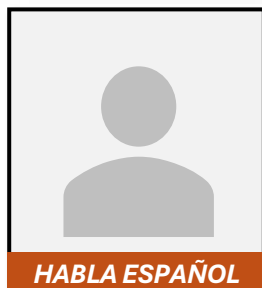
Skylar Weatherford
Administrative Analyst I

BHAB; Leg/Policy Planning
Central O&E (ad-hoc)



Vivien Bernardo
Administrative Analyst I

Specialized O&E; Reporting
East & Central O&E (ad-hoc)



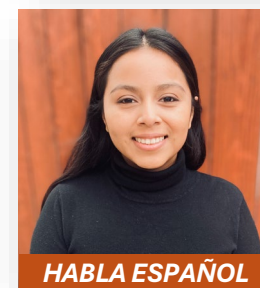
IN BACKGROUND
Community Health Worker

Central (0.5FTE); O&E
HSEC Outstation: Central



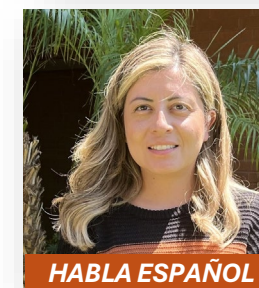
Annika Manlutac
Administrative Analyst I

Specialized O&E; Reporting
Central & South O&E (ad-hoc)



Vilma Poroj
Administrative Analyst II

Central & South; Health
Promotion; O&E



Gabriela Ochoa
Community Health Worker

South; O&E
Outstation: HSEC-South

BHS Communication & Engagement (C&E) Student Ambassador/Liaison Program



Pilot program launched Winter 2022 following creation of C&E Unit

- Provides college students with experiential learning and on-the-job training opportunities specific to C&E's day-to-day operations
- Students paid to perform hybrid, non-clinical work, 20 hours a week, over the course of approximately one year (10-12 months, dependent on student's academic/vocational program)



BHS Communication & Engagement (C&E) Student Ambassador/Liaison Program

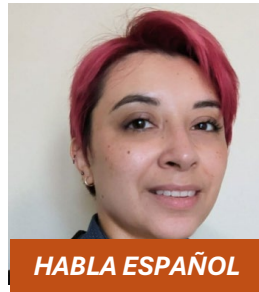


Part-Time Student Team Members (as of 06/27/24)

- Students support a variety of outreach, education, and engagement activities with the community and/or with department's employees
- Next cohort (Cohort #4) anticipated to start early September 2024 following background/hiring clearances



**C&E SAL
Program**



Bricia Iriarte-Cortez

*SAL (Graduate)
Spring 2024*

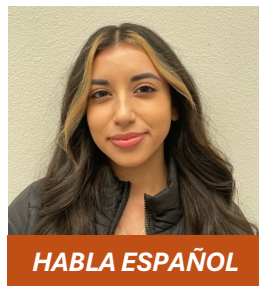
Health Promotion; O&E



Mimi Ngo

*SAL (Graduate)
Winter 2024*

Health Promotion; O&E



Cristina Rios Vega

*SAL (Graduate)
Summer 2024*

Health Promotion; O&E



Cristen Balignot

*SAL (Undergraduate)
Spring 2025*

Specialized O&E; Reporting



Jasmine Garcia

*SAL (Graduate)
Spring 2025*

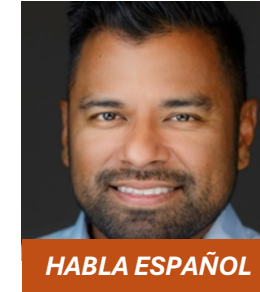
Health Promotion; O&E



Brianna Victoria

*SAL (Undergraduate)
Spring 2025*

BHAB; Leg/Policy Planning



Edgar Vargas, Jr.

*SAL (Graduate)
Spring 2025*

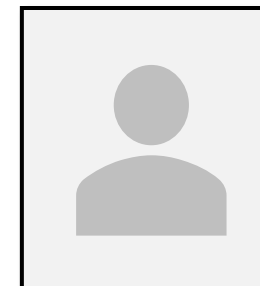
Specialized O&E; Reporting



Intera Suadprathon

*SAL (Undergraduate)
Anticipated Graduation-TBD*

BHS Employee Engagement



(5) HIRING/IN BACKGROUND

SEPTEMBER 2024 (Tentative start)