



# 3-4-50: Chronic Disease Deaths in San Diego County Short Brief – Central Region, 2000-2022

[\(Click Here for Detailed Brief\)](#)

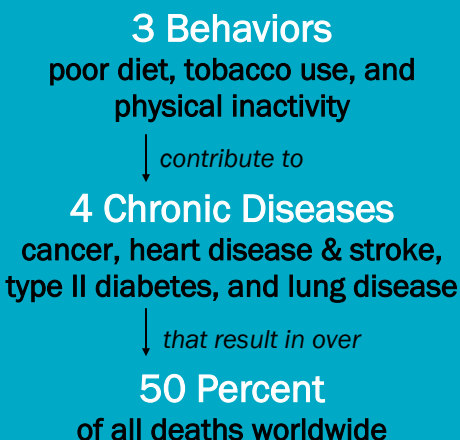


Figure 1: 3-4-50 Death Percentages

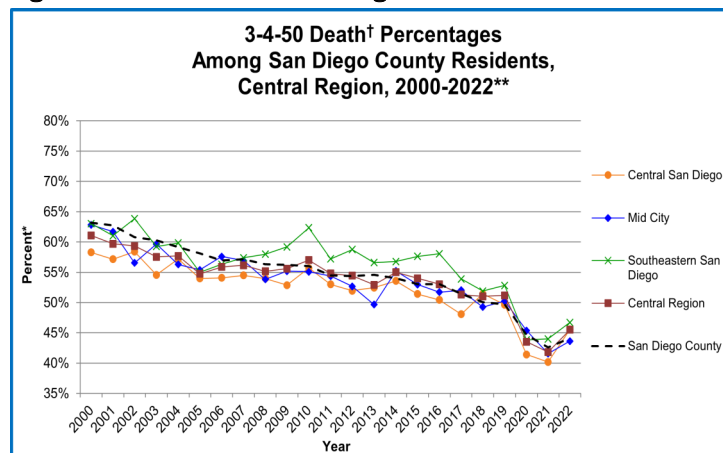
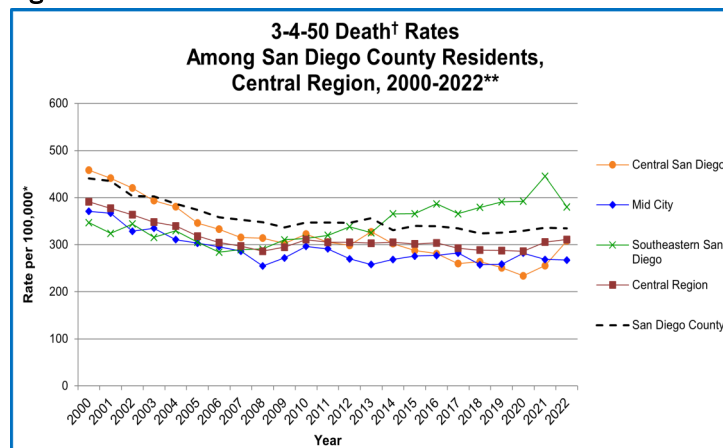


Figure 2: 3-4-50 Death Rates



\*3-4-50 deaths as a percentage of all cause deaths. Rates per 100,000 population.  
 †3-4-50 deaths include stroke, coronary heart disease (CHD), diabetes, COPD, asthma, and cancer.  
 Beginning with 2017, COPD includes chronic lower respiratory diseases (COPD/chronic lower respiratory diseases).  
 §Rates and percentages not calculated for fewer than 5 events for the years 2000 to 2019. Rates and percentages not calculated for fewer than 11 events for the years 2020-2022. Rates and percentages not calculated in cases where zip code is unknown.  
 \*\*The COVID-19 pandemic was associated with increases in all-cause mortality. COVID-19 deaths have affected the patterns of mortality including those of 3-4-50 chronic diseases.  
 Source: California Department of Public Health, 2000-2013 Death Statistical Master Files, 2014-2022 California Vital Records Business Intelligence System (VRBIS). SANDAG, Current Population Estimates. Population estimates for 2020 and 2021 were derived using the 2010 decennial census and data should be considered preliminary. 2022 population estimates were derived from the 2020 decennial census.

Prepared by County of San Diego (CoSD), Health and Human Services Agency (HHS), Public Health Services (PHS), Community Health Statistics Unit, January 2024.

## What is 3-4-50?

Three-four-fifty refers to three behaviors that contribute to four chronic diseases and result in 50% or more deaths worldwide.<sup>1</sup> These chronic diseases are potentially preventable through modifying diet, physical activity, and smoking behaviors. In San Diego County 44% of all deaths are due to these four chronic diseases.

## 3-4-50 in San Diego County—Central Region

- From 2000-2022, the overall percent of all deaths due to 3-4-50 chronic diseases decreased in the Central Region and its subregional areas (SRAs) (Figure 1).
- Overall, 3-4-50 chronic disease death rates have decreased in the Central Region and its SRAs from 2000-2022 with the exception of the Southeastern San Diego SRA which increased by 9.6% (Figure 2).
- Among the Central Region SRAs, Southeastern San Diego had the highest percentage of deaths due to 3-4-50 chronic diseases in 2022.
- Among the Central Region SRAs, Southeastern San Diego had the highest death rate due to 3-4-50 chronic diseases in 2022.
- Despite a decrease, 3-4-50 chronic diseases still accounted for 45% of all deaths in the Central Region in 2022.

For more information and data, go to  
[www.SDHealthStatistics.com](http://www.SDHealthStatistics.com)



<sup>1</sup>World Health Organization (WHO). "WHO reveals leading causes of death and disability worldwide: 2000-2019", <https://www.who.int/news/item/09-12-2020-who-reveals-leading-causes-of-death-and-disability-worldwide-2000-2019> (Accessed February 8, 2024).

# What does 3-4-50 look like in Central Region?



In Central Region,  
3-4-50 is actually 3-4-45

In San Diego County,  
3-4-50 is actually 3-4-44

## 3 BEHAVIORS

### TOBACCO USE

- In 2022, 8.7% of adults in Central Region reported being current smokers.

### LACK OF PHYSICAL ACTIVITY\*~

- In 2020, nearly 1 in 3 children in Central Region spent 5 or more hours on sedentary activities on typical weekend days.

### POOR NUTRITION\*

- In 2020, 68.8% of children in Central Region ate less than 5 servings of fruits/vegetables daily.

### TOBACCO USE

- In 2022, 4.6% of adults in San Diego County reported being current smokers.

### LACK OF PHYSICAL ACTIVITY~

- In 2020, over 1 in 3 children in San Diego County spent 5 or more hours on sedentary activities on typical weekend days.

### POOR NUTRITION

- In 2020, 62.8% of children in San Diego County ate less than 5 servings of fruits/vegetables daily.

## 4 CHRONIC DISEASES

### CANCER

- In 2022, cancer was the second leading cause of death in Central Region.

### HEART DISEASE & STROKE\*

- In 2022, 6.6% of adults in Central Region had ever been diagnosed with heart disease.

### DIABETES\*

- In 2022, 5.1% of adults in Central Region had ever been diagnosed with diabetes.

### LUNG DISEASE

- In 2022, 14.6% of residents (ages 1 year and older) in Central Region had ever been diagnosed with asthma.

### CANCER

- In 2022, cancer was the leading cause of death in San Diego County.

### HEART DISEASE & STROKE

- In 2022, 7.2% of adults in San Diego County had ever been diagnosed with heart disease.

### DIABETES

- In 2022, 7.9% of adults in San Diego County had ever been diagnosed with diabetes.

### LUNG DISEASE

- In 2022, 15.2% of residents (ages 1 year and older) in San Diego County had ever been diagnosed with asthma.

## CAUSE OVER 50% OF DEATHS

In 2022, cancer, heart disease and stroke, diabetes, and lung disease caused 45% of all deaths in the Central Region.

In 2022, cancer, heart disease and stroke, diabetes, and lung disease caused 44% of all deaths in San Diego County.



\*Indicates a statistically unstable estimate. Proceed with caution. Estimate is included for trending purposes.

~Includes "5 to less than 8 hours" and "8 or more hours" spent on sedentary activities on typical weekend days.

Data Sources: UCLA Center for Health Policy Research, Los Angeles, CA. AskCHIS. Available at <http://ask.chis.ucla.edu>. Most recent data available presented. County of San Diego, Health and Human Services Agency, Public Health Services, Community Health Statistics Unit, Leading Causes of Death Tables by HHS Region, 2011-2022. Available at [https://www.sandiegocounty.gov/content/sdc/hhsa/programs/phs/community\\_health\\_statistics/CHSU\\_Mortality.html#leading](https://www.sandiegocounty.gov/content/sdc/hhsa/programs/phs/community_health_statistics/CHSU_Mortality.html#leading).