



POVERTY

in San Diego County



Accredited on May 17, 2016
Reaccredited on August 21, 2023



More than **1 in 10 San Diegans** were living in poverty in 2022.



More than **2 in 5 households** spent > 30% of their household income on housing in 2021*.



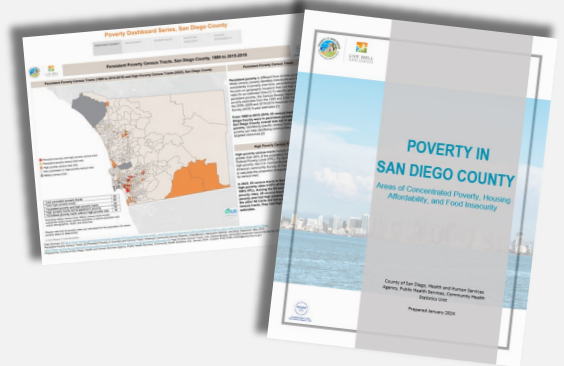
Nearly **1 in 7 children** under 18 were living in poverty in 2021*.

*2022 data coming soon.

Poverty is an important social determinant of health (SDOH) because it frequently interacts with various other SDOH which, together, influence health behaviors and outcomes. Communities with high rates of poverty have higher rates of morbidity and mortality. These health inequities increase as poverty rates increase.

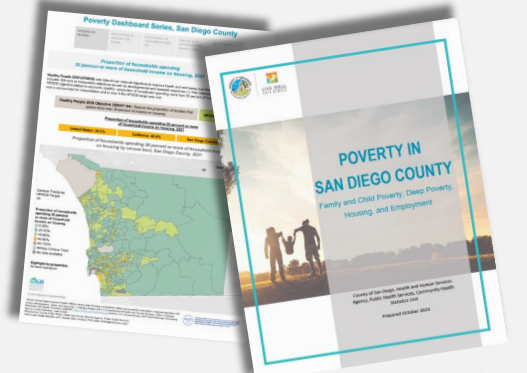
Poverty Dashboard Series 1

Areas of Concentrated Poverty, Housing Affordability, and Food Insecurity



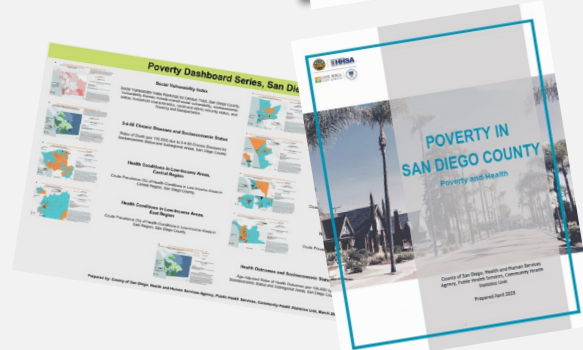
Poverty Dashboard Series 2

Family and Child Poverty, Deep Poverty, Housing, and Employment



Poverty Dashboard Series 3

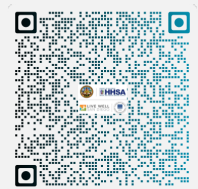
Poverty and Health



Check out the **Poverty Brief and Dashboard Series** in the Health Equity section of our website!

County of San Diego, Health and Human Services Agency, Public Health Services, Community Health Statistics Unit

www.sdhealthstatistics.com



SCAN or CLICK