



MAP ATLAS

Chronic Obstructive Pulmonary Disease (COPD)/Chronic Lower Respiratory Disease San Diego County, 2019



County of San Diego | Health and Human Services Agency
Public Health Services | Community Health Statistics Unit

Prepared January 2022

Data Sources - San Diego County, 2019

Death* is based on underlying cause of death among San Diego County residents. Rates calculated per 100,000 residents. Rates not calculated for < 5 cases. Maps not produced for conditions/outcomes with no SRA-level rates. Some sections may have no maps.

Sources: Death data from Vital Records Business Intelligence System (VRBIS), 2019.

Population estimates from San Diego Association of Governments (SANDAG), 2019 v5/2020.

*For substance/drug overdoses, death rate is based on the multiple/contributing cause of death among San Diego County residents.

Hospitalization refers to treatment at a general acute care facility in San Diego County. Rates calculated per 100,000 residents. Rates not calculated for < 5 cases. Maps not produced for conditions/outcomes with no SRA-level rates. Some sections may have no maps.

Sources: California Office of Statewide Health Planning and Development (OSHPD), 2019 Patient Discharge Database.

Population estimates from San Diego Association of Governments (SANDAG), 2019 v5/2020.

Emergency Department (ED) Discharge refers to treatment at an ED facility in San Diego County.

Rates calculated per 100,000 residents. Rates not calculated for < 5 cases. Maps not produced for conditions/outcomes with no SRA-level rates. Some sections may have no maps.

Sources: California Office of Statewide Health Planning and Development (OSHPD), 2019 Emergency Department Discharge database.

Population estimates from San Diego Association of Governments (SANDAG), 2019 v5/2020.

In-Patient Treatment (IPT) refers to treatment at a psychiatric care or chemical rehabilitation facility in San Diego County. Rates calculated per 100,000 residents. Rates not calculated for < 5 cases. Maps not produced for conditions/outcomes with no SRA-level rates. Some sections may have no maps.

Sources: California Office of Statewide Health Planning and Development (OSHPD), 2019 Patient Discharge Database.

Population estimates from San Diego Association of Governments (SANDAG), 2019 v5/2020.

Maps & Analysis by County of San Diego, Health and Human Services Agency, Public Health Services, Community Health Statistics Unit. Contact 619.692.6672. January 2022.

https://www.sandiegocounty.gov/hhsa/programs/phs/community_health_statistics/
LiveWellSD.org.

Contact Information:

Community Health Statistics Unit

3851 Rosecrans Street

San Diego, CA 92110

619.692.6667

Isabel.Corcoc@sdcounty.ca.gov

(Epidemiologist II for CHSU)

Niki.Quach1@sdcounty.ca.gov

(Epidemiology Analyst Intern for CHSU)

Christopher.OMalley@sdcounty.ca.gov

(Senior Epidemiologist for CHSU)

For more detailed explanation of geography, methods, and sources, see online Community Profile at

<http://www.SDHealthStatistics.com/>

Contents

Section 1: Deaths	4
Section 2: Hospitalizations.....	12
Section 3: Emergency Department (ED) Discharges.....	20
Section 4: In-Patient Treatments (IPT).....	29

Section 1

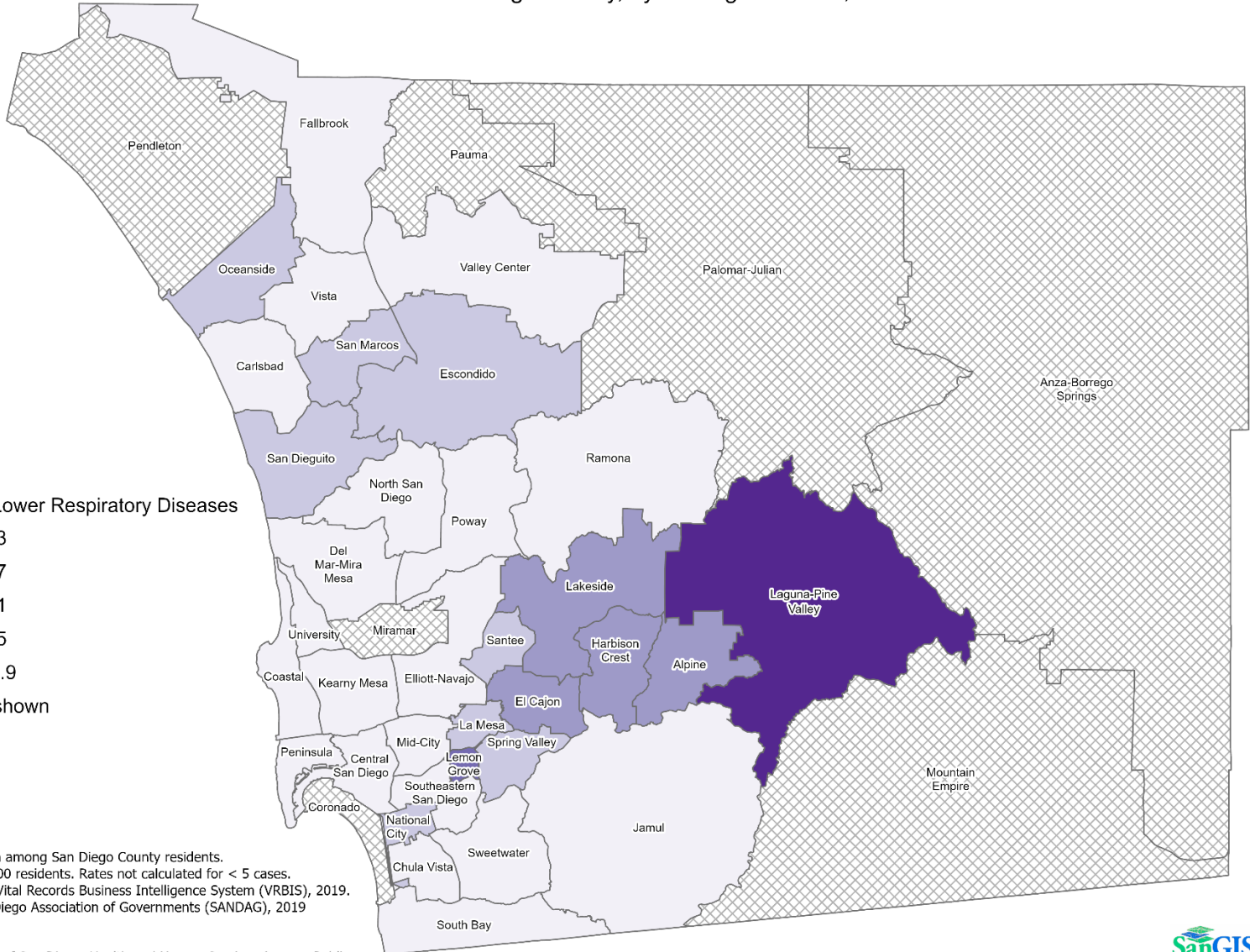
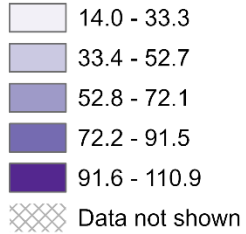
Death Rates Among San Diego County Residents by Demographics, 2019:

- Total Rate
- Race/Ethnicity
 - Asian/Pacific Islander (API)
 - Black
 - Hispanic
 - White
- Age
 - 0-14
 - 15-24
 - 25-44
 - 45-64
 - 65+

Total Death Rates* San Diego County, by Subregional Area, 2019

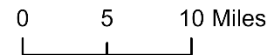


COPD/Chronic Lower Respiratory Diseases



*Underlying cause of death among San Diego County residents.
 Rates calculated per 100,000 residents. Rates not calculated for < 5 cases.
 Sources: Death data from Vital Records Business Intelligence System (VRBIS), 2019.
 Population estimates San Diego Association of Governments (SANDAG), 2019 v5/2020.

Maps & Analysis by County of San Diego, Health and Human Services Agency, Public Health Services, Community Health Statistics Unit. Contact 619.692.6672. https://www.sandiegocounty.gov/hhsa/programs/phs/community_health_statistics/.
 December, 2021.
LiveWellSD.org.

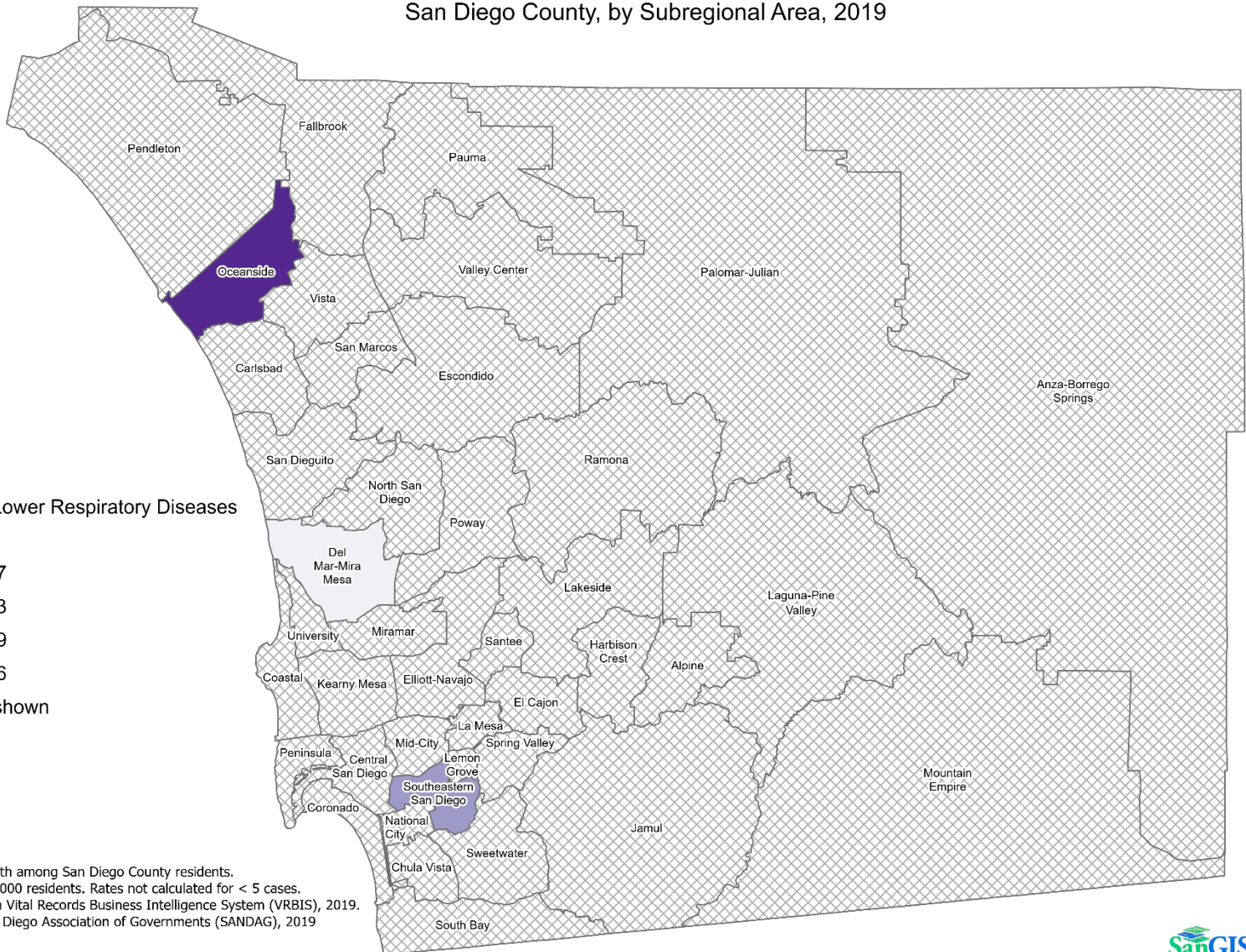
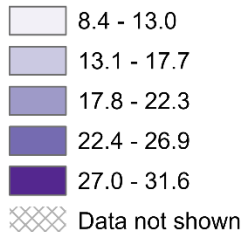




Death Rates Among Asian/Pacific Islander Residents* San Diego County, by Subregional Area, 2019

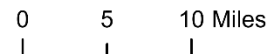


COPD/Chronic Lower Respiratory Diseases



*Underlying cause of death among San Diego County residents.
Rates calculated per 100,000 residents. Rates not calculated for < 5 cases.
Sources: Death data from Vital Records Business Intelligence System (VRBIS), 2019.
Population estimates San Diego Association of Governments (SANDAG), 2019 v5/2020.

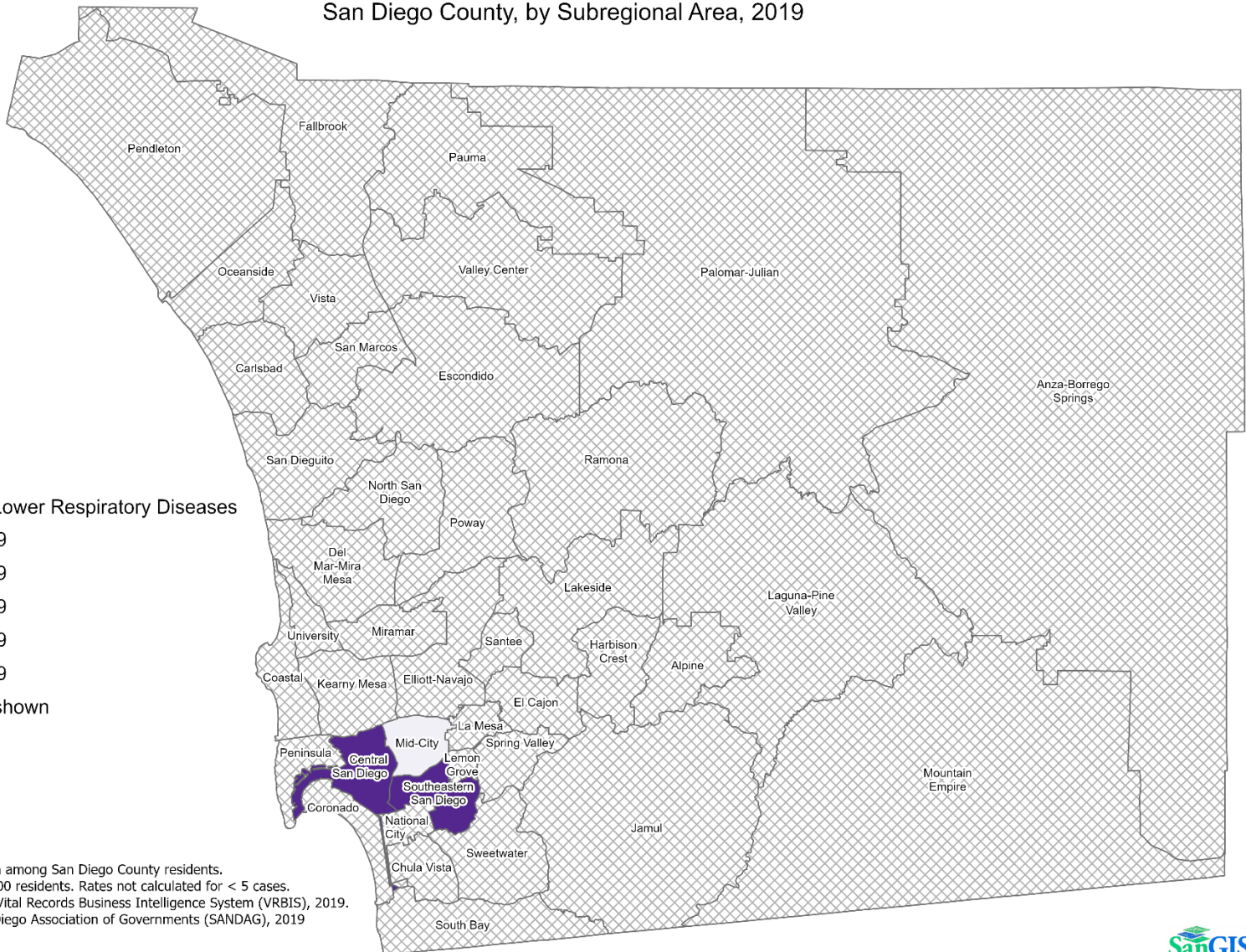
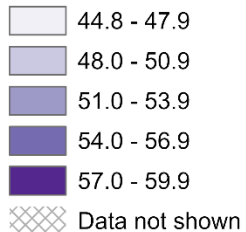
Maps & Analysis by County of San Diego, Health and Human Services Agency, Public Health Services, Community Health Statistics Unit. Contact 619.692.6672. https://www.sandiegocounty.gov/hhsa/programs/phs/community_health_statistics/.
December, 2021.
LiveWellSD.org.



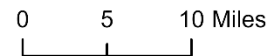
Death Rates Among Black Residents* San Diego County, by Subregional Area, 2019



COPD/Chronic Lower Respiratory Diseases



*Underlying cause of death among San Diego County residents.
Rates calculated per 100,000 residents. Rates not calculated for < 5 cases.
Sources: Death data from Vital Records Business Intelligence System (VRBIS), 2019.
Population estimates San Diego Association of Governments (SANDAG), 2019 v5/2020.

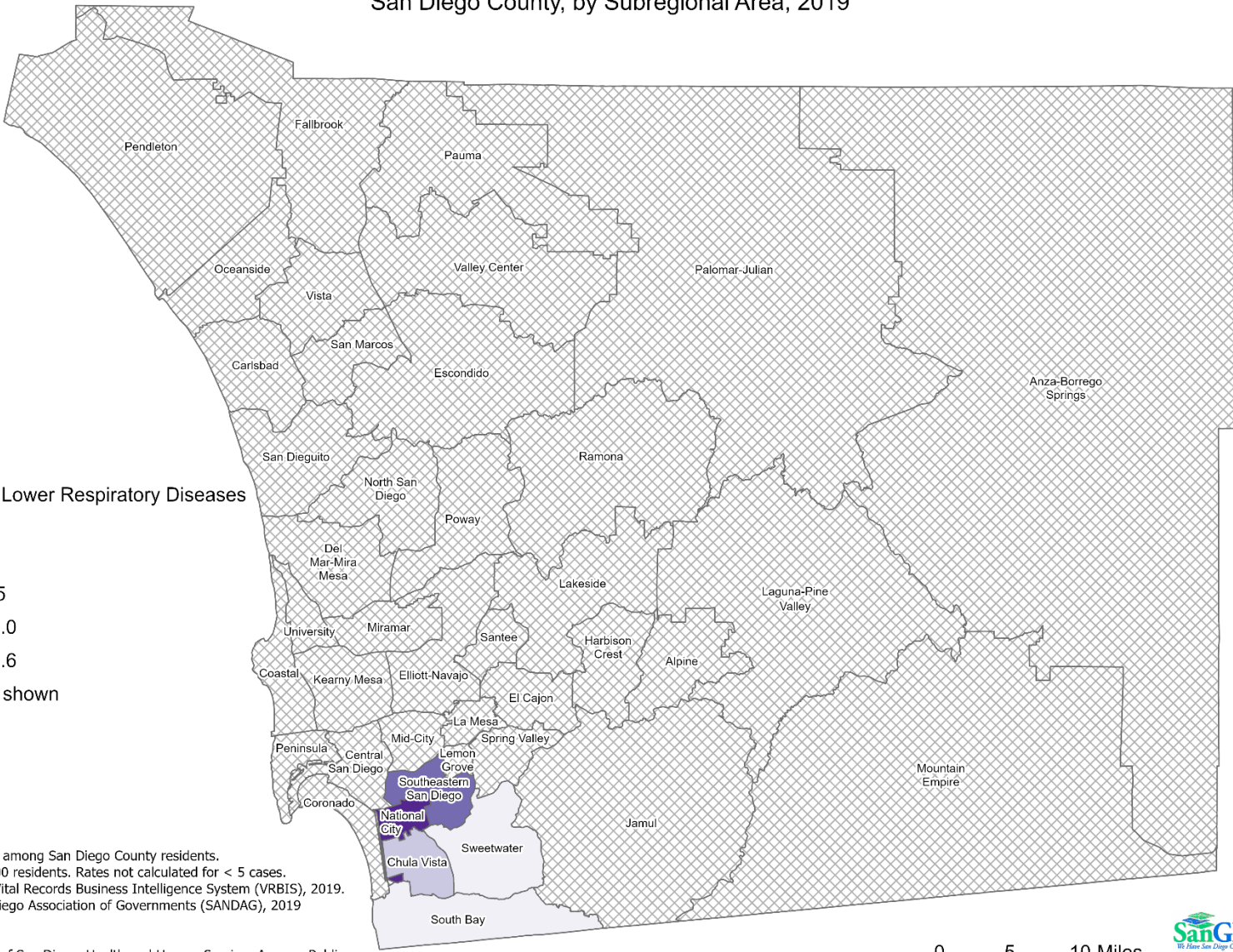
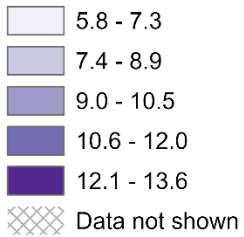




Death Rates Among Hispanic Residents* San Diego County, by Subregional Area, 2019

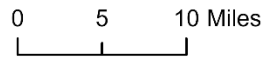


COPD/Chronic Lower Respiratory Diseases

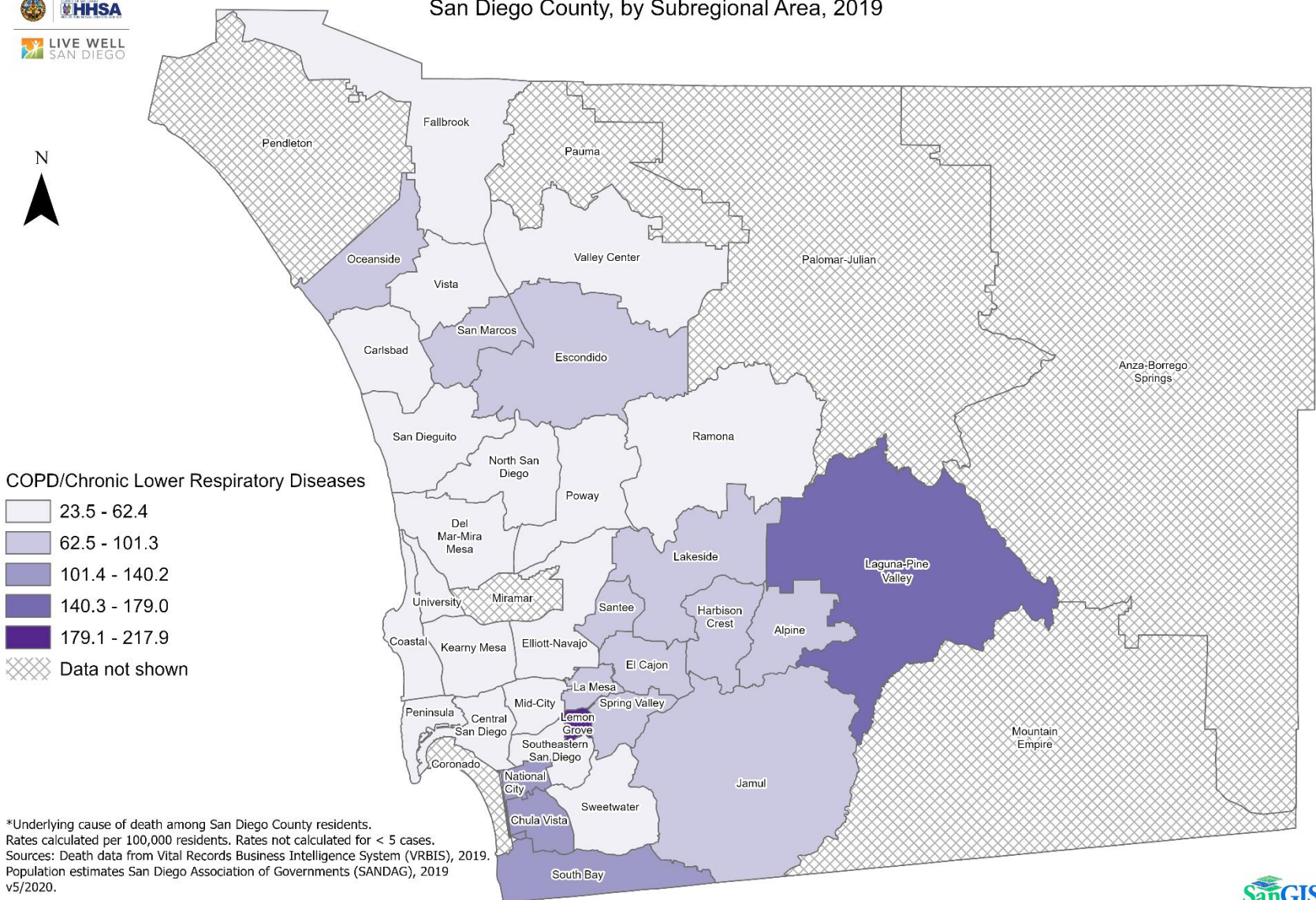


*Underlying cause of death among San Diego County residents. Rates calculated per 100,000 residents. Rates not calculated for < 5 cases. Sources: Death data from Vital Records Business Intelligence System (VRBIS), 2019. Population estimates San Diego Association of Governments (SANDAG), 2019 v5/2020.

Maps & Analysis by County of San Diego, Health and Human Services Agency, Public Health Services, Community Health Statistics Unit. Contact 619.692.6672. https://www.sandiegocounty.gov/hhsa/programs/phs/community_health_statistics/. December, 2021. LiveWellSD.org.



Death Rates Among White Residents* San Diego County, by Subregional Area, 2019



*Underlying cause of death among San Diego County residents.
Rates calculated per 100,000 residents. Rates not calculated for < 5 cases.
Sources: Death data from Vital Records Business Intelligence System (VRBIS), 2019.
Population estimates San Diego Association of Governments (SANDAG), 2019 v5/2020.



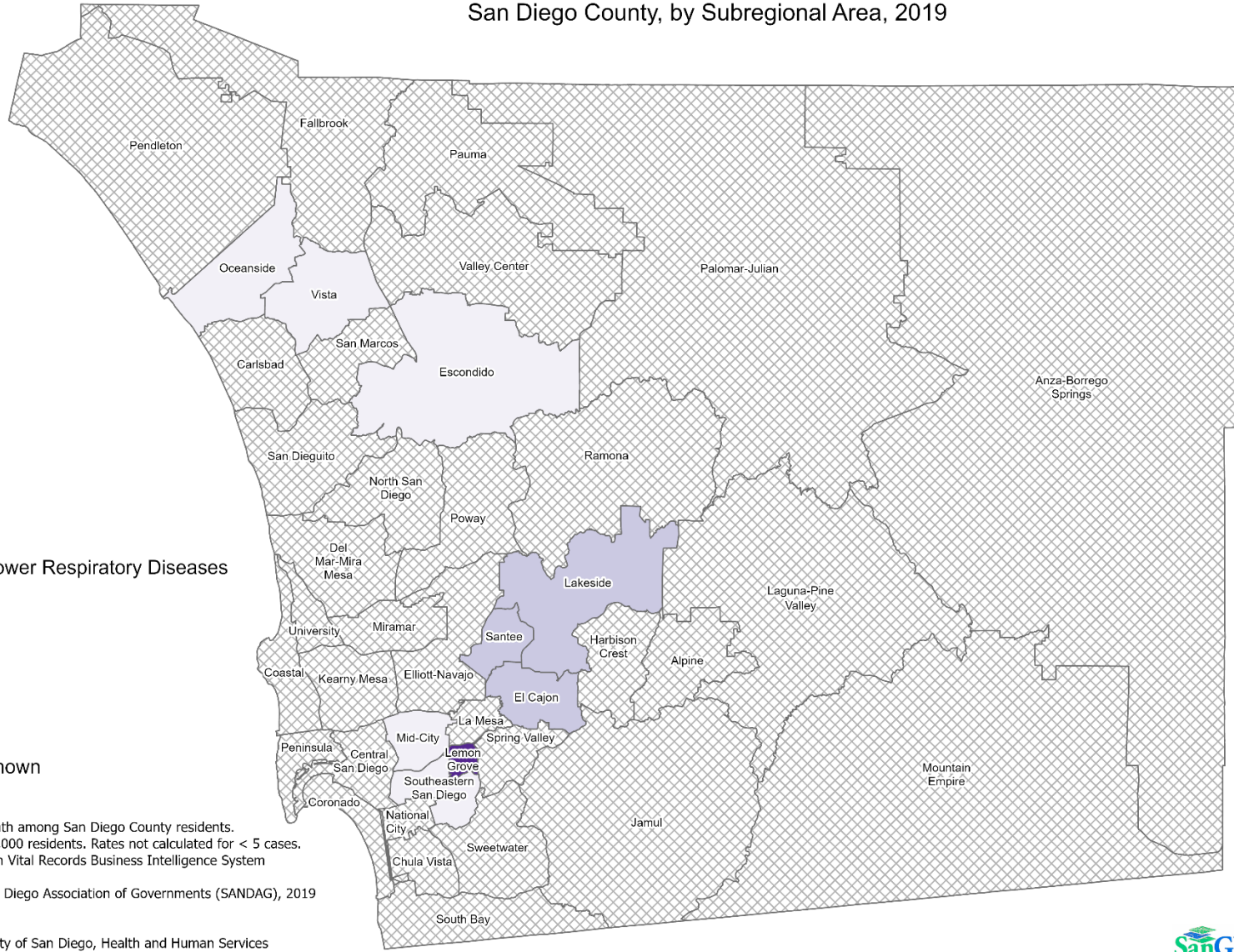
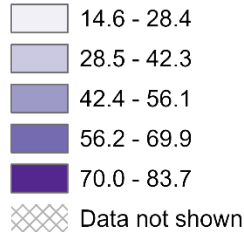


LIVE WELL SAN DIEGO

Death Rates Among Residents, Ages 45-64* San Diego County, by Subregional Area, 2019

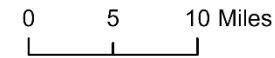


COPD/Chronic Lower Respiratory Diseases

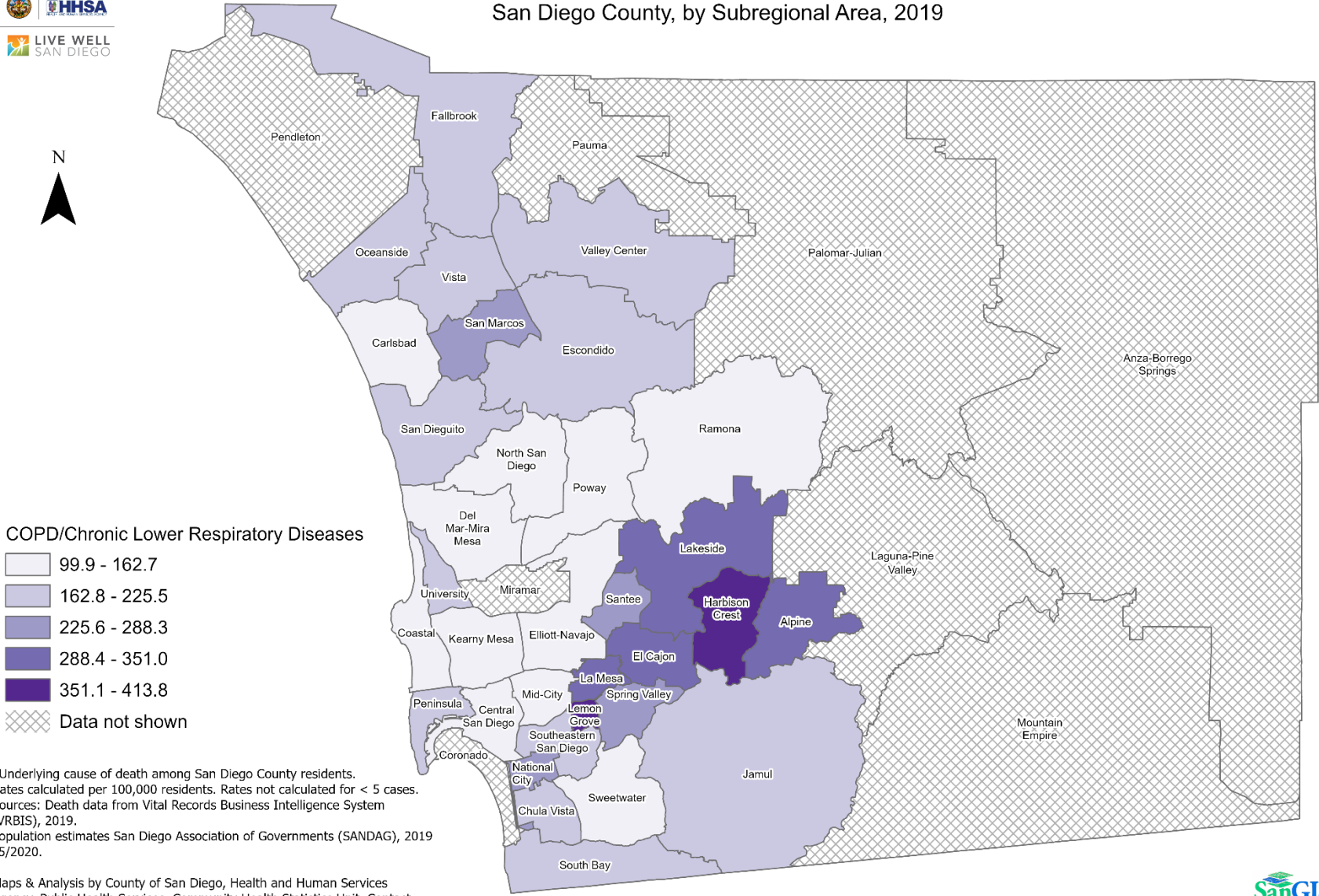


*Underlying cause of death among San Diego County residents. Rates calculated per 100,000 residents. Rates not calculated for < 5 cases. Sources: Death data from Vital Records Business Intelligence System (VRBIS), 2019. Population estimates San Diego Association of Governments (SANDAG), 2019 v5/2020.

Maps & Analysis by County of San Diego, Health and Human Services Agency, Public Health Services, Community Health Statistics Unit. Contact 619.692.6672. https://www.sandiegocounty.gov/hhsa/programs/phs/community_health_statistics/. December, 2021. LiveWellSD.org.



Death Rates Among Residents, Ages 65+* San Diego County, by Subregional Area, 2019



*Underlying cause of death among San Diego County residents. Rates calculated per 100,000 residents. Rates not calculated for < 5 cases. Sources: Death data from Vital Records Business Intelligence System (VRBIS), 2019. Population estimates San Diego Association of Governments (SANDAG), 2019 v5/2020.

Section 2

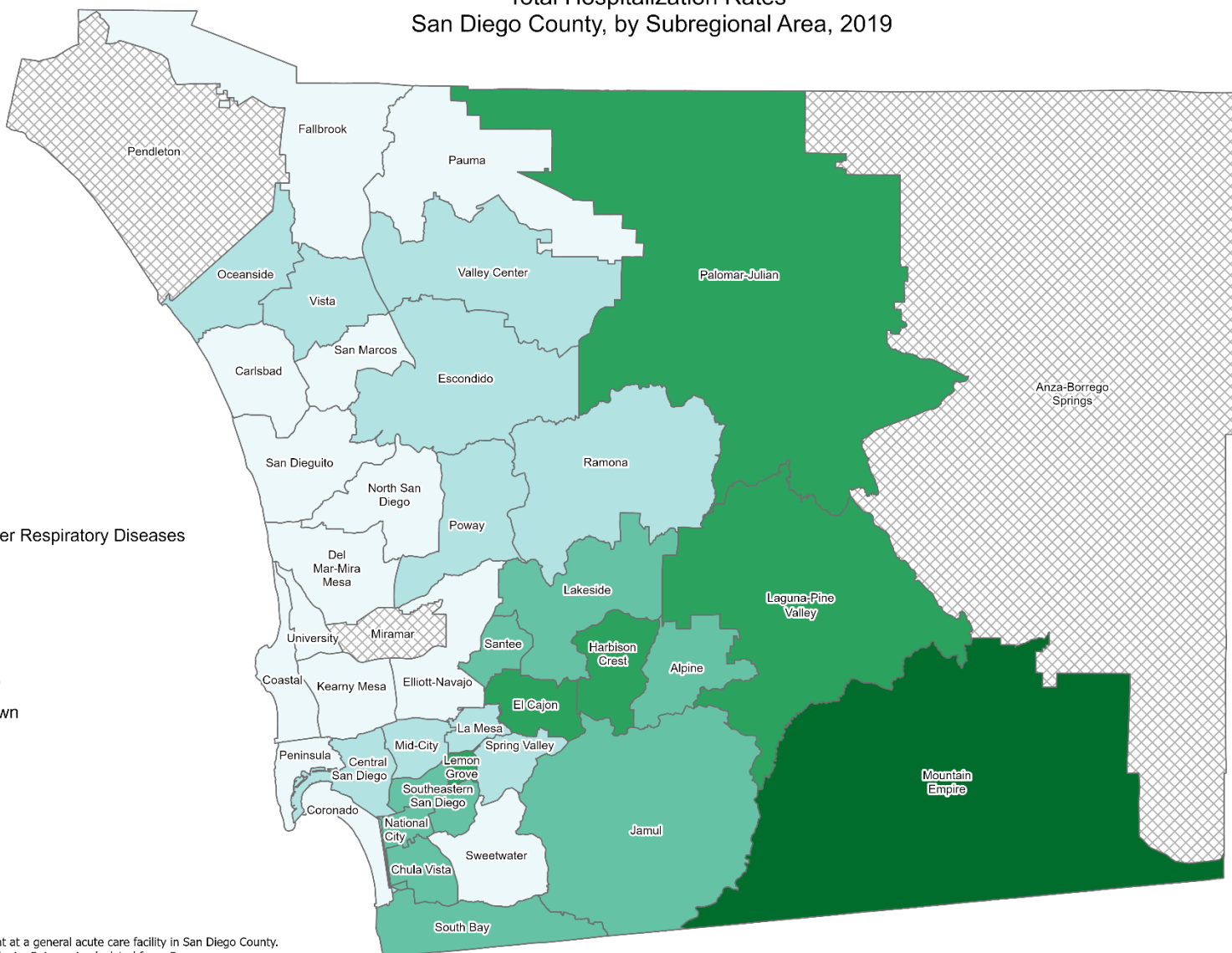
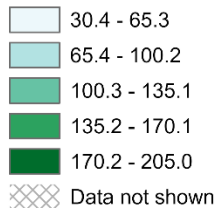
Hospitalization Rates Among San Diego County Residents by Demographics, 2019:

- Total Rate
- Race/Ethnicity
 - Asian/Pacific Islander (API)
 - Black
 - Hispanic
 - White
- Age
 - 0-14
 - 15-24
 - 25-44
 - 45-64
 - 65+

Total Hospitalization Rates* San Diego County, by Subregional Area, 2019

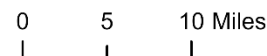


COPD/Chronic Lower Respiratory Diseases



*Hospitalization refers to treatment at a general acute care facility in San Diego County. Rates calculated per 100,000 residents. Rates not calculated for < 5 cases.
Sources: California Office of Statewide Health Planning and Development (OSHPD), 2019 Patient Discharge Database.
Population estimates San Diego Association of Governments (SANDAG), 2019 v5/2020.

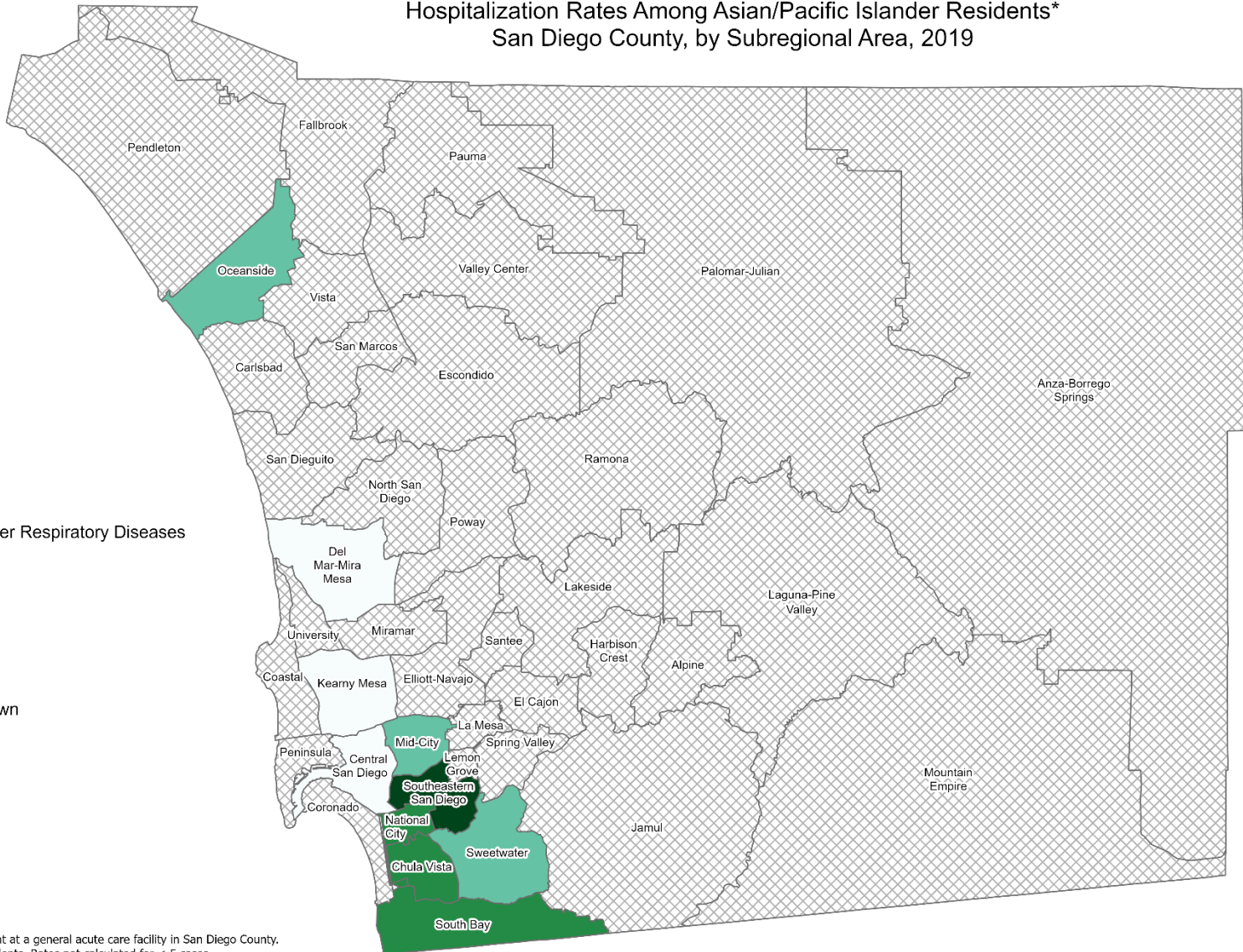
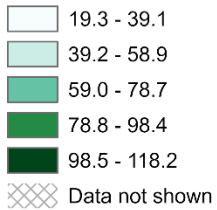
Maps & Analysis by County of San Diego, Health and Human Services Agency, Public Health Services, Community Health Statistics Unit. Contact 619.692.6672. https://www.sandiegocounty.gov/hhsa/programs/phs/community_health_statistics/. December 2021.
LiveWellSD.org.



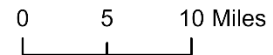
Hospitalization Rates Among Asian/Pacific Islander Residents* San Diego County, by Subregional Area, 2019



COPD/Chronic Lower Respiratory Diseases



*Hospitalization refers to treatment at a general acute care facility in San Diego County. Rates calculated per 100,000 residents. Rates not calculated for < 5 cases.
Sources: California Office of Statewide Health Planning and Development (OSHPD), 2019 Patient Discharge Database.
Population estimates San Diego Association of Governments (SANDAG), 2019 v5/2020.



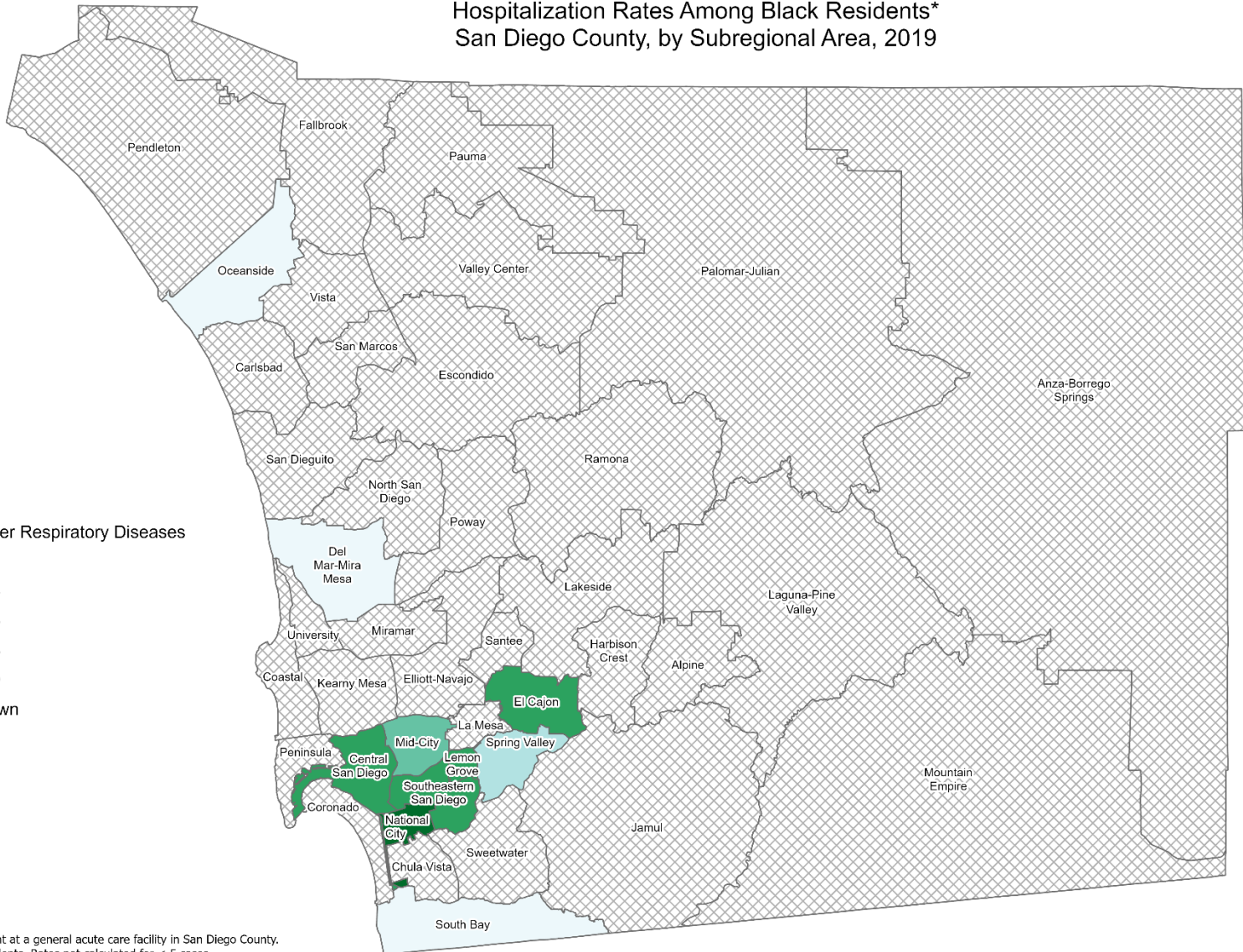


Hospitalization Rates Among Black Residents* San Diego County, by Subregional Area, 2019



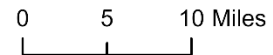
COPD/Chronic Lower Respiratory Diseases

- 93.0 - 145.2
- 145.3 - 197.4
- 197.5 - 249.6
- 249.7 - 301.8
- 301.9 - 354.0
- Data not shown



*Hospitalization refers to treatment at a general acute care facility in San Diego County. Rates calculated per 100,000 residents. Rates not calculated for < 5 cases.
Sources: California Office of Statewide Health Planning and Development (OSHPD), 2019 Patient Discharge Database.
Population estimates San Diego Association of Governments (SANDAG), 2019 v5/2020.

Maps & Analysis by County of San Diego, Health and Human Services Agency, Public Health Services, Community Health Statistics Unit. Contact 619.692.6672. https://www.sandiegocounty.gov/hhsa/programs/phs/community_health_statistics/. December 2021.
LiveWellSD.org.

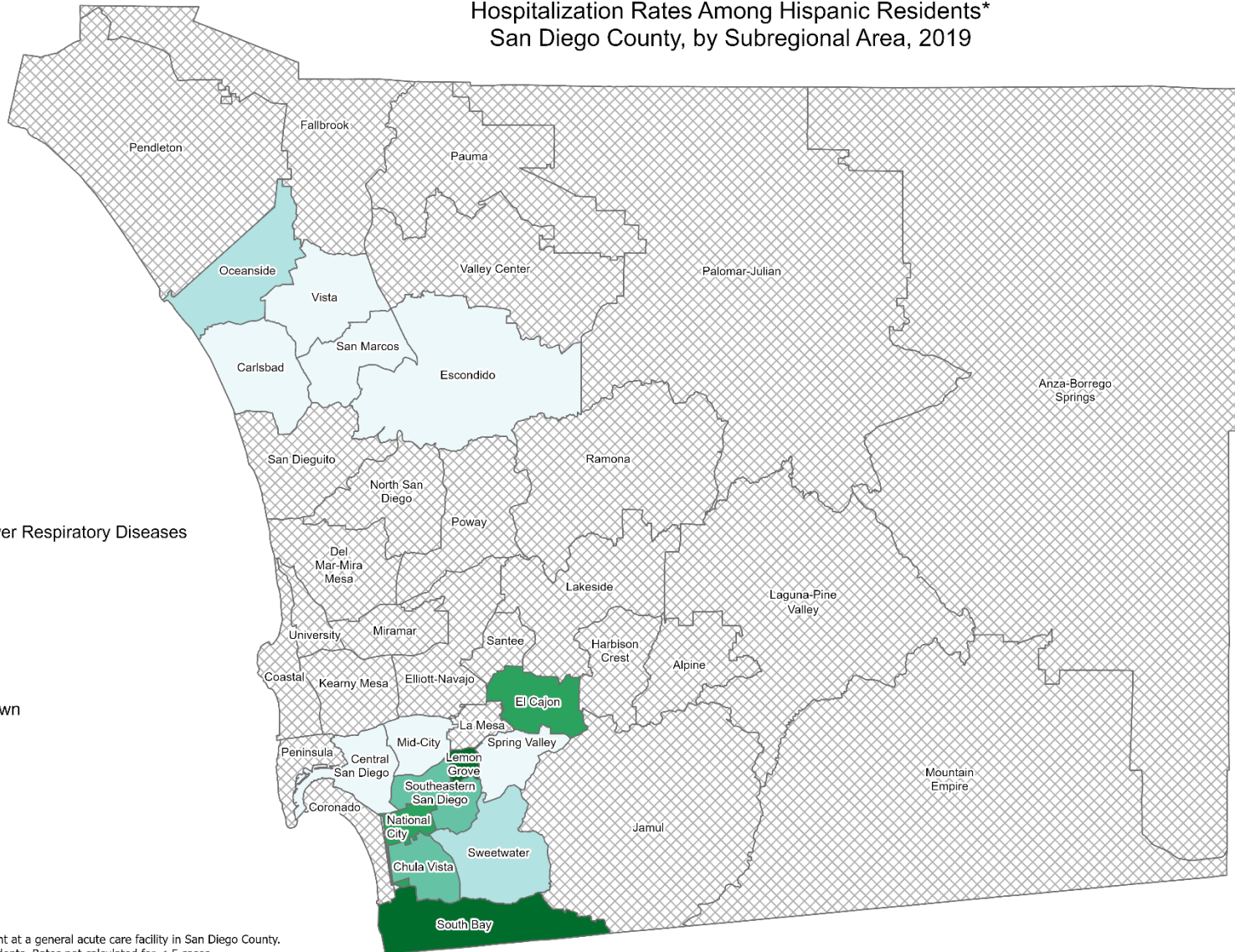
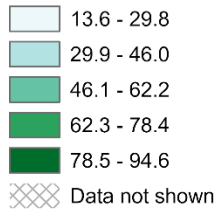




Hospitalization Rates Among Hispanic Residents* San Diego County, by Subregional Area, 2019



COPD/Chronic Lower Respiratory Diseases



*Hospitalization refers to treatment at a general acute care facility in San Diego County. Rates calculated per 100,000 residents. Rates not calculated for < 5 cases.
Sources: California Office of Statewide Health Planning and Development (OSHPD), 2019 Patient Discharge Database.
Population estimates San Diego Association of Governments (SANDAG), 2019 v5/2020.

Maps & Analysis by County of San Diego, Health and Human Services Agency, Public Health Services, Community Health Statistics Unit. Contact 619.692.6672. https://www.sandiegocounty.gov/hhsa/programs/phs/community_health_statistics/. December 2021.
LiveWellSD.org.

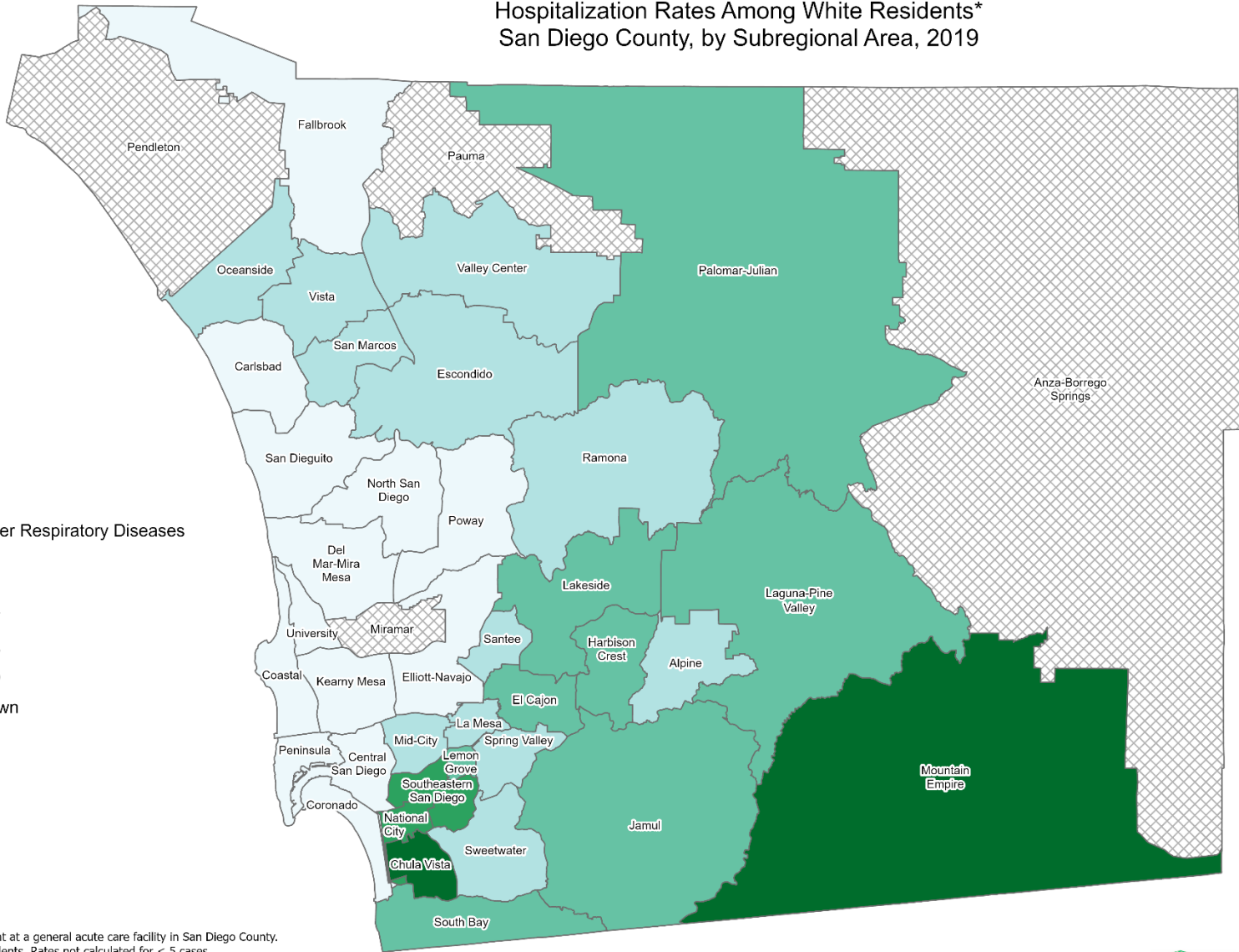


Hospitalization Rates Among White Residents* San Diego County, by Subregional Area, 2019

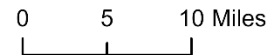


COPD/Chronic Lower Respiratory Diseases

- 26.4 - 96.5
- 96.6 - 166.6
- 166.7 - 236.7
- 236.8 - 306.8
- 306.9 - 376.9
- Data not shown



*Hospitalization refers to treatment at a general acute care facility in San Diego County. Rates calculated per 100,000 residents. Rates not calculated for < 5 cases. Sources: California Office of Statewide Health Planning and Development (OSHPD), 2019 Patient Discharge Database. Population estimates San Diego Association of Governments (SANDAG), 2019 v5/2020.

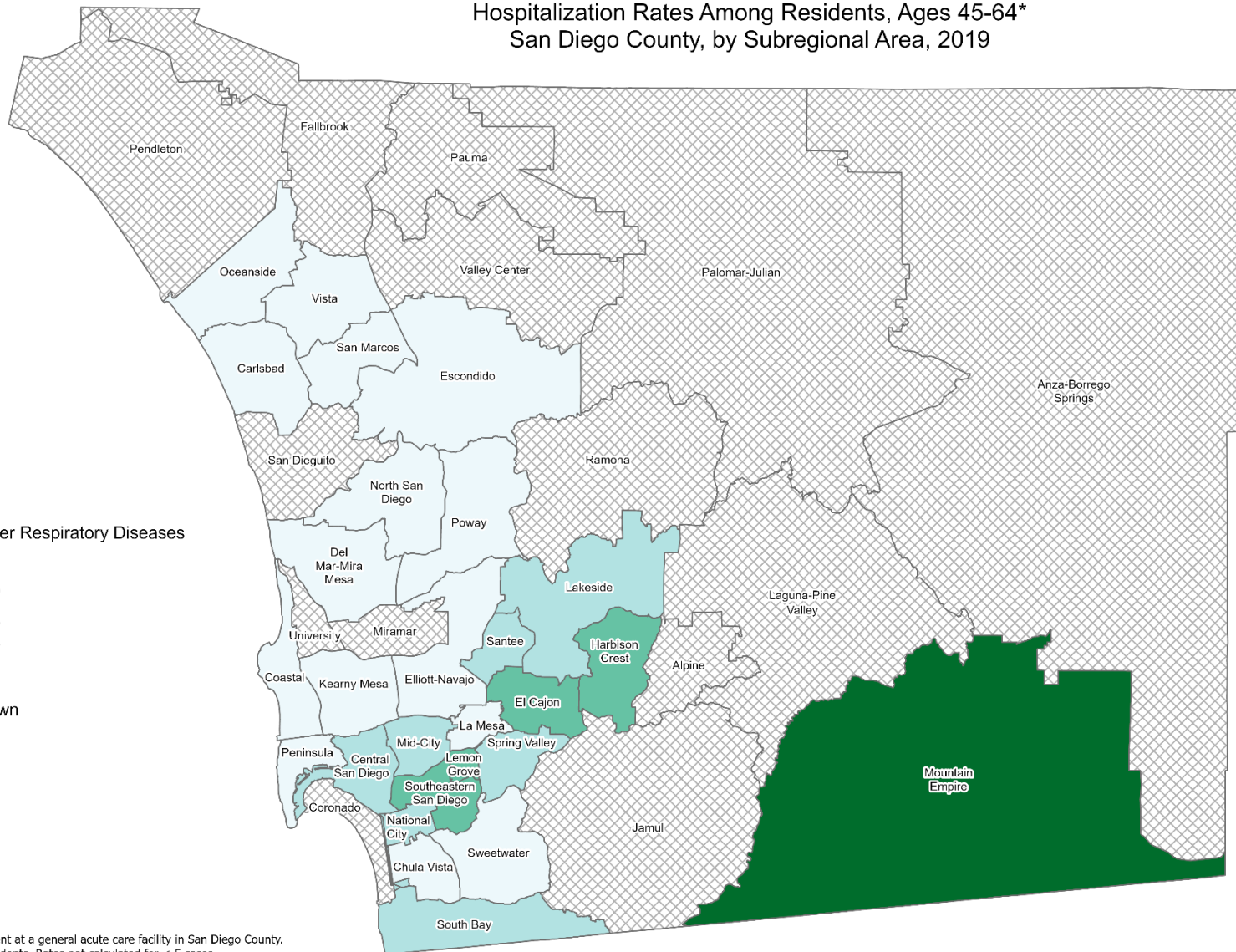
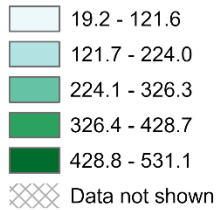




Hospitalization Rates Among Residents, Ages 45-64* San Diego County, by Subregional Area, 2019

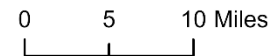


COPD/Chronic Lower Respiratory Diseases



*Hospitalization refers to treatment at a general acute care facility in San Diego County. Rates calculated per 100,000 residents. Rates not calculated for < 5 cases.
Sources: California Office of Statewide Health Planning and Development (OSHPD), 2019 Patient Discharge Database.
Population estimates San Diego Association of Governments (SANDAG), 2019 v5/2020.

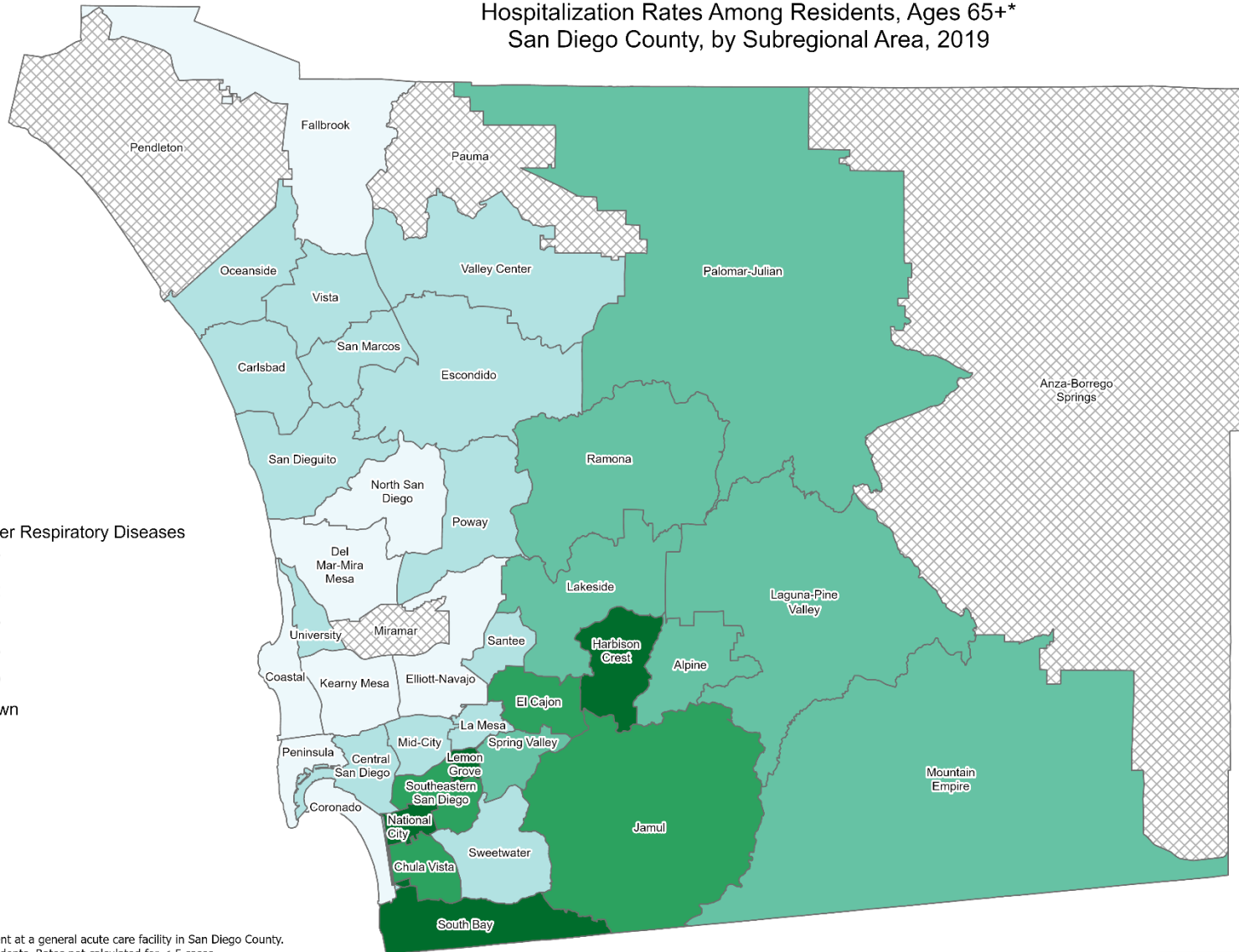
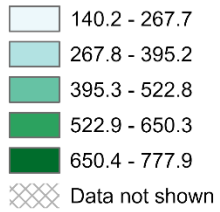
Maps & Analysis by County of San Diego, Health and Human Services Agency, Public Health Services, Community Health Statistics Unit. Contact 619.692.6672. https://www.sandiegocounty.gov/hhsa/programs/phs/community_health_statistics/. December 2021.
LiveWellSD.org.



Hospitalization Rates Among Residents, Ages 65+* San Diego County, by Subregional Area, 2019



COPD/Chronic Lower Respiratory Diseases



*Hospitalization refers to treatment at a general acute care facility in San Diego County. Rates calculated per 100,000 residents. Rates not calculated for < 5 cases.
 Sources: California Office of Statewide Health Planning and Development (OSHPD), 2019 Patient Discharge Database.
 Population estimates San Diego Association of Governments (SANDAG), 2019 v5/2020.



Section 3

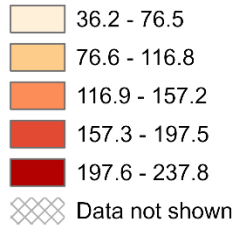
Emergency Department (ED) Discharge Rates Among San Diego County Residents by Demographics, 2019:

- Total Rate
- Race/Ethnicity
 - Asian/Pacific Islander (API)
 - Black
 - Hispanic
 - White
- Age
 - 0-14
 - 15-24
 - 25-44
 - 45-64
 - 65+

Total Emergency Department Discharge Rates* San Diego County, by Subregional Area, 2019

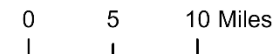
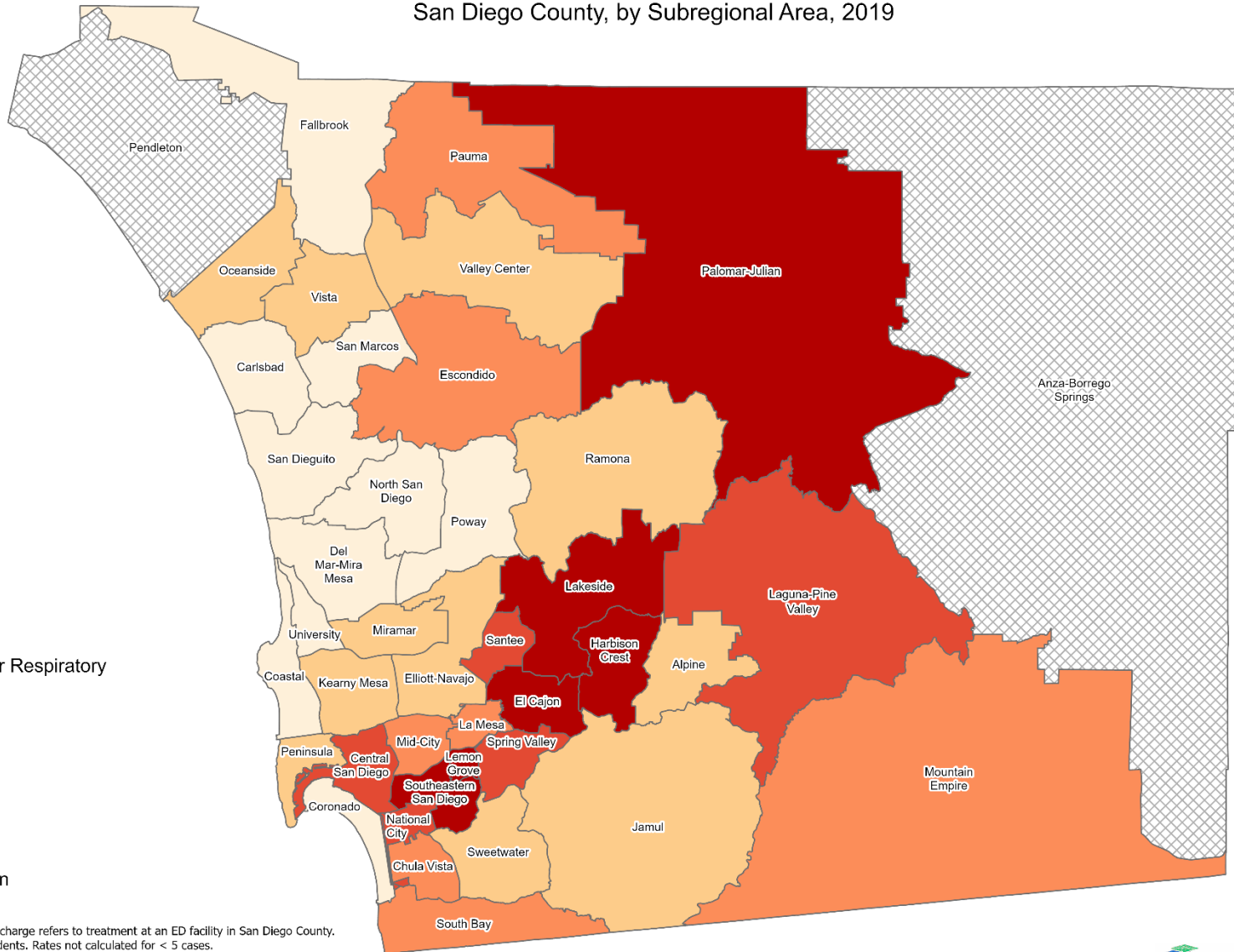


COPD/Chronic Lower Respiratory Diseases



*Emergency Department (ED) Discharge refers to treatment at an ED facility in San Diego County. Rates calculated per 100,000 residents. Rates not calculated for < 5 cases.
Sources: California Office of Statewide Health Planning and Development (OSHPD), 2019 Emergency Department Discharge database. Population estimates San Diego Association of Governments (SANDAG), 2019 v5/2020.

Maps & Analysis by County of San Diego, Health and Human Services Agency, Public Health Services, Community Health Statistics Unit. Contact 619.692.6672. https://www.sandiegocounty.gov/hhsa/programs/phs/community_health_statistics/. December, 2021. LiveWellSD.org.

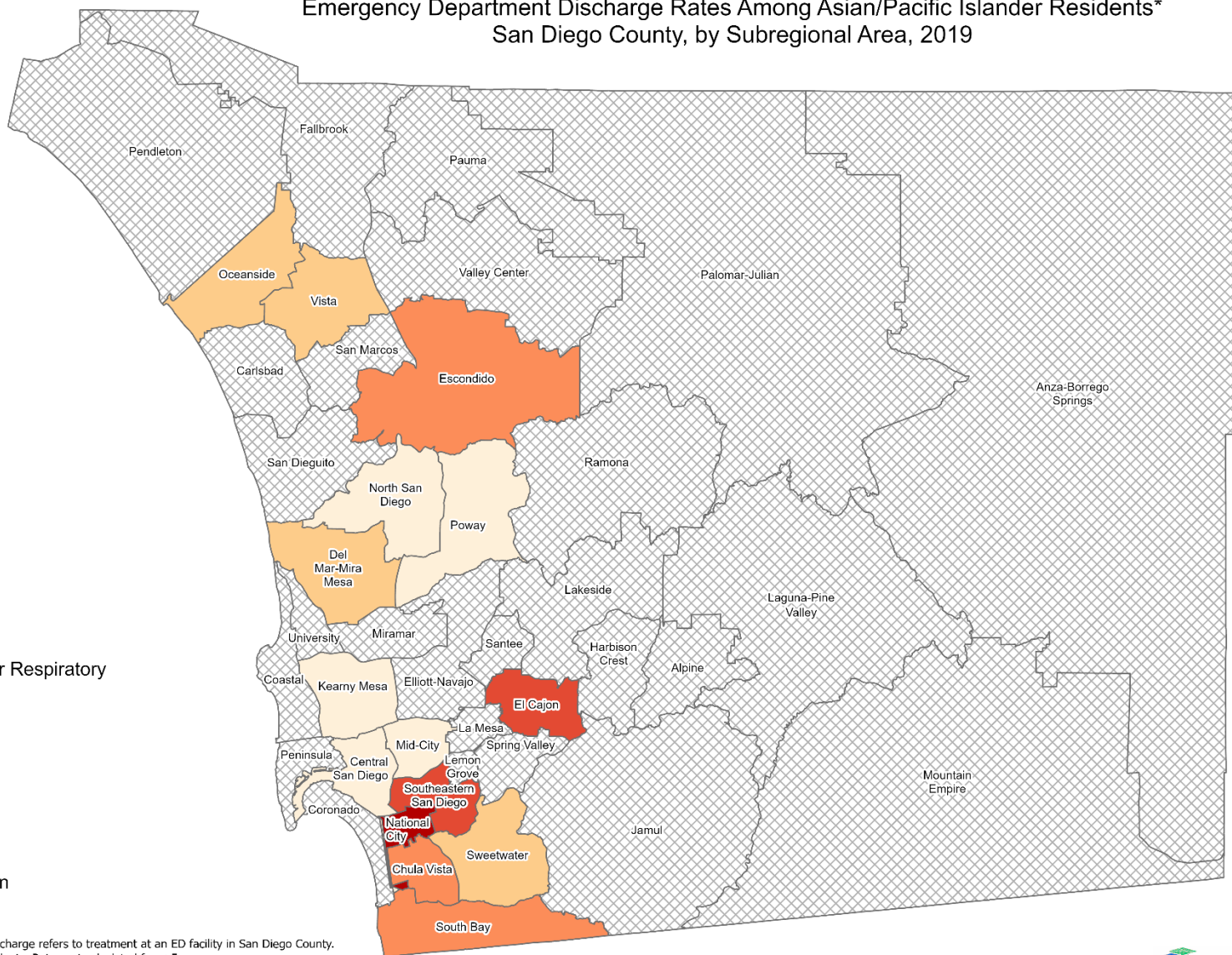
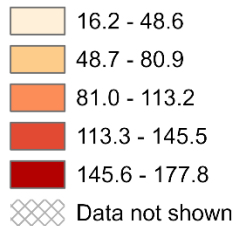




Emergency Department Discharge Rates Among Asian/Pacific Islander Residents* San Diego County, by Subregional Area, 2019

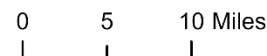


COPD/Chronic Lower Respiratory Diseases



*Emergency Department (ED) Discharge refers to treatment at an ED facility in San Diego County. Rates calculated per 100,000 residents. Rates not calculated for < 5 cases.
Sources: California Office of Statewide Health Planning and Development (OSHPD), 2019 Emergency Department Discharge database. Population estimates San Diego Association of Governments (SANDAG), 2019 v5/2020.

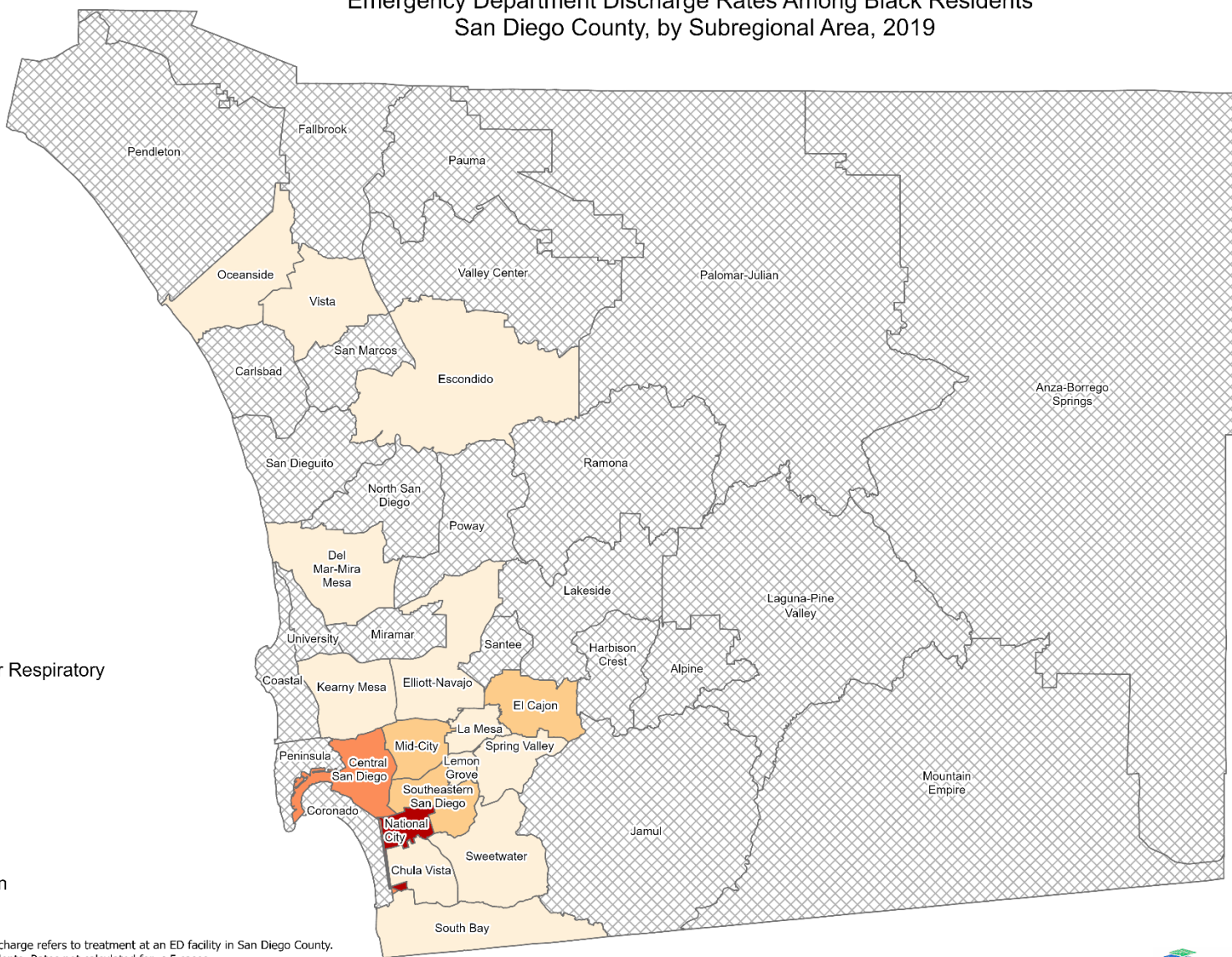
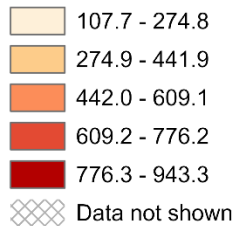
Maps & Analysis by County of San Diego, Health and Human Services Agency, Public Health Services, Community Health Statistics Unit. Contact 619.692.6672. https://www.sandiegocounty.gov/hhsa/programs/phs/community_health_statistics/. December, 2021. LiveWellSD.org.



Emergency Department Discharge Rates Among Black Residents* San Diego County, by Subregional Area, 2019

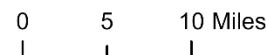


COPD/Chronic Lower Respiratory Diseases



*Emergency Department (ED) Discharge refers to treatment at an ED facility in San Diego County. Rates calculated per 100,000 residents. Rates not calculated for < 5 cases.
Sources: California Office of Statewide Health Planning and Development (OSHPD), 2019 Emergency Department Discharge database. Population estimates San Diego Association of Governments (SANDAG), 2019 v5/2020.

Maps & Analysis by County of San Diego, Health and Human Services Agency, Public Health Services, Community Health Statistics Unit. Contact 619.692.6672. https://www.sandiegocounty.gov/hhsa/programs/phs/community_health_statistics/. December, 2021. LiveWellSD.org.

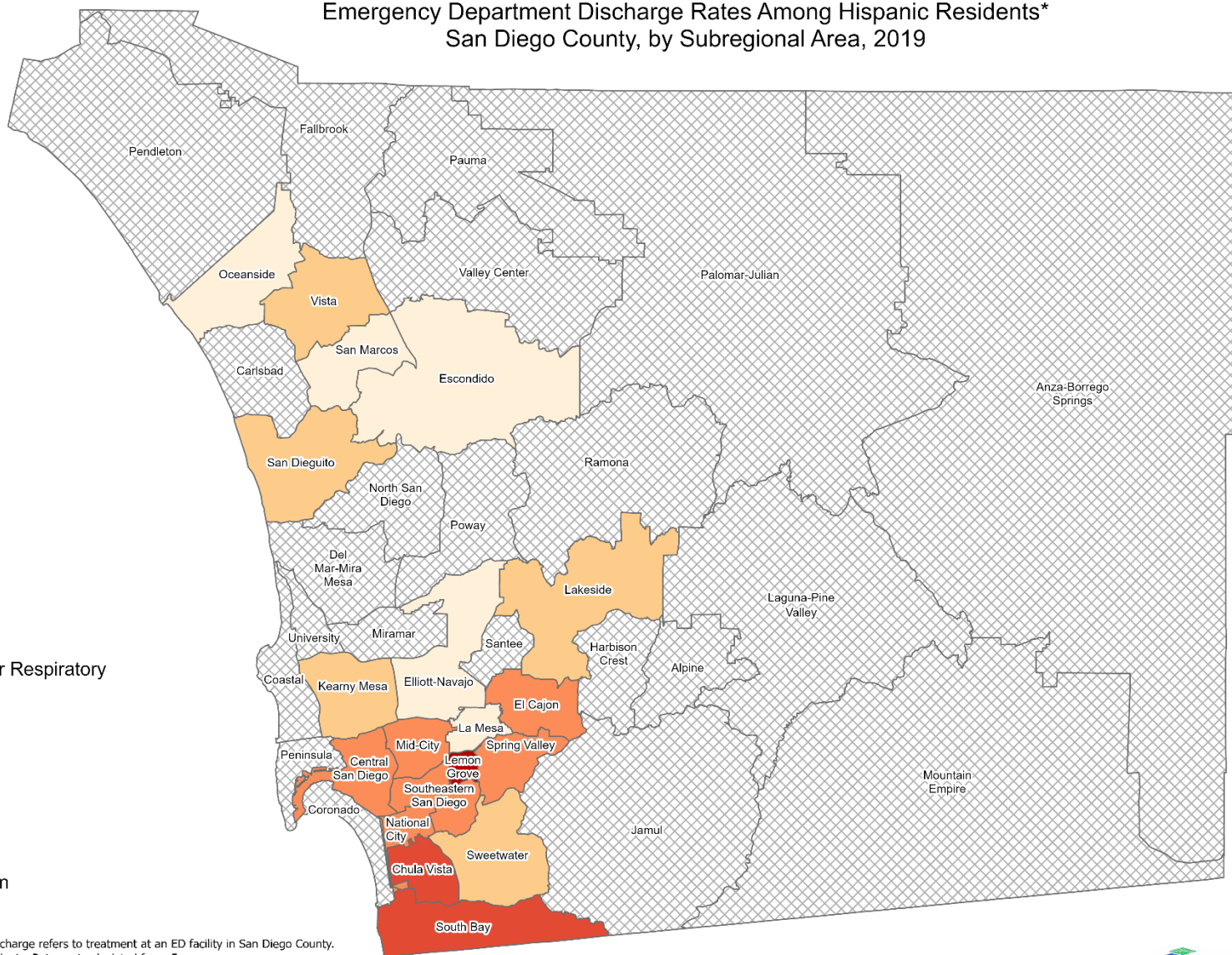
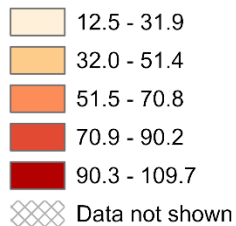




Emergency Department Discharge Rates Among Hispanic Residents* San Diego County, by Subregional Area, 2019

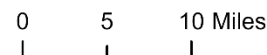


COPD/Chronic Lower Respiratory Diseases



*Emergency Department (ED) Discharge refers to treatment at an ED facility in San Diego County. Rates calculated per 100,000 residents. Rates not calculated for < 5 cases. Sources: California Office of Statewide Health Planning and Development (OSHPD), 2019 Emergency Department Discharge database. Population estimates San Diego Association of Governments (SANDAG), 2019 v5/2020.

Maps & Analysis by County of San Diego, Health and Human Services Agency, Public Health Services, Community Health Statistics Unit. Contact 619.692.6672. https://www.sandiegocounty.gov/hhsa/programs/phs/community_health_statistics/. December, 2021. LiveWellSD.org.

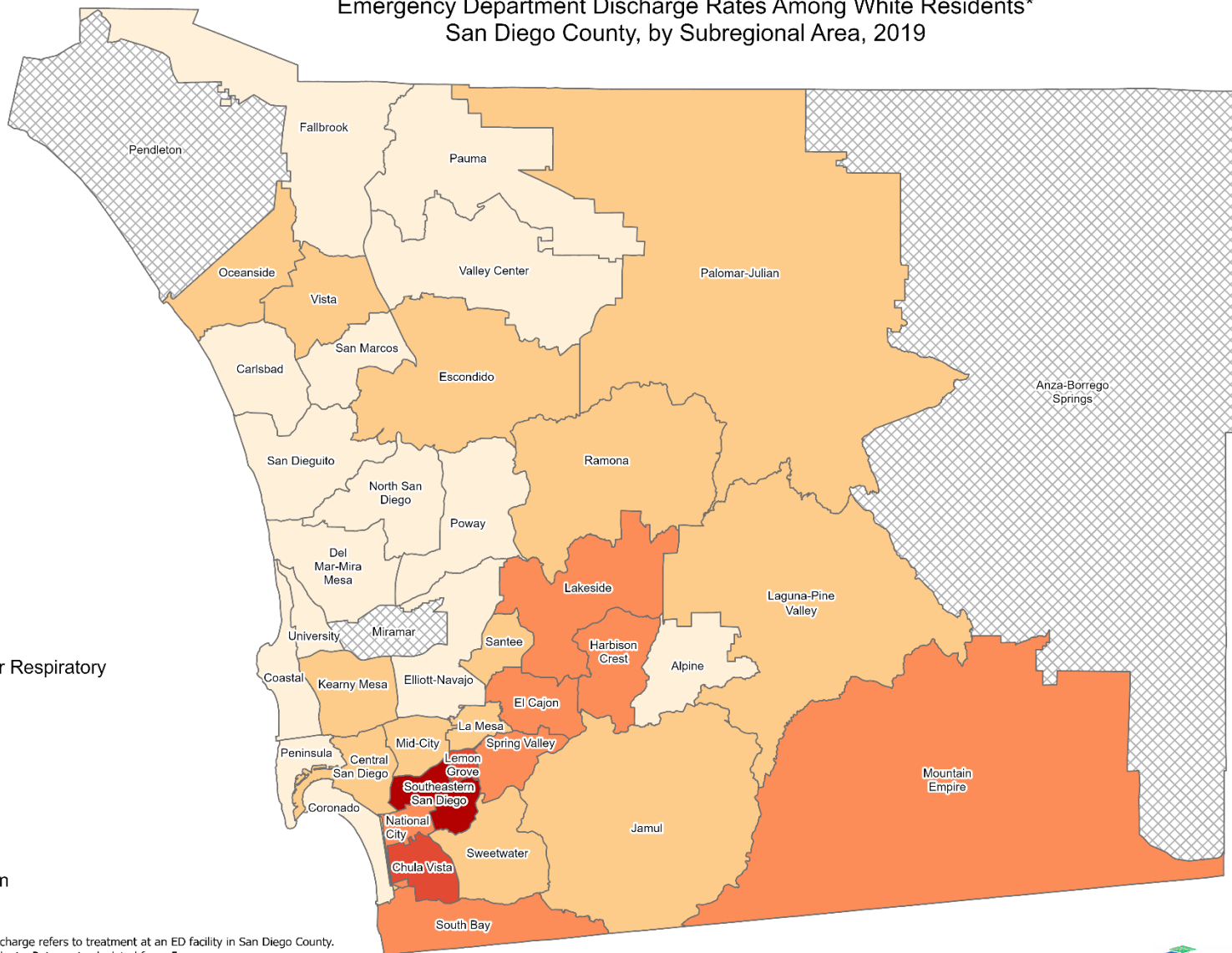
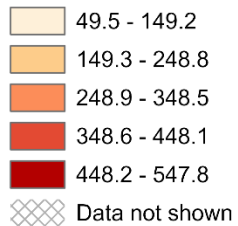




Emergency Department Discharge Rates Among White Residents* San Diego County, by Subregional Area, 2019

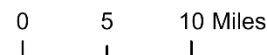


COPD/Chronic Lower Respiratory Diseases



*Emergency Department (ED) Discharge refers to treatment at an ED facility in San Diego County. Rates calculated per 100,000 residents. Rates not calculated for < 5 cases.
Sources: California Office of Statewide Health Planning and Development (OSHPD), 2019 Emergency Department Discharge database. Population estimates San Diego Association of Governments (SANDAG), 2019 v5/2020.

Maps & Analysis by County of San Diego, Health and Human Services Agency, Public Health Services, Community Health Statistics Unit. Contact 619.692.6672. https://www.sandiegocounty.gov/hhsa/programs/phs/community_health_statistics/. December, 2021. LiveWellSD.org.

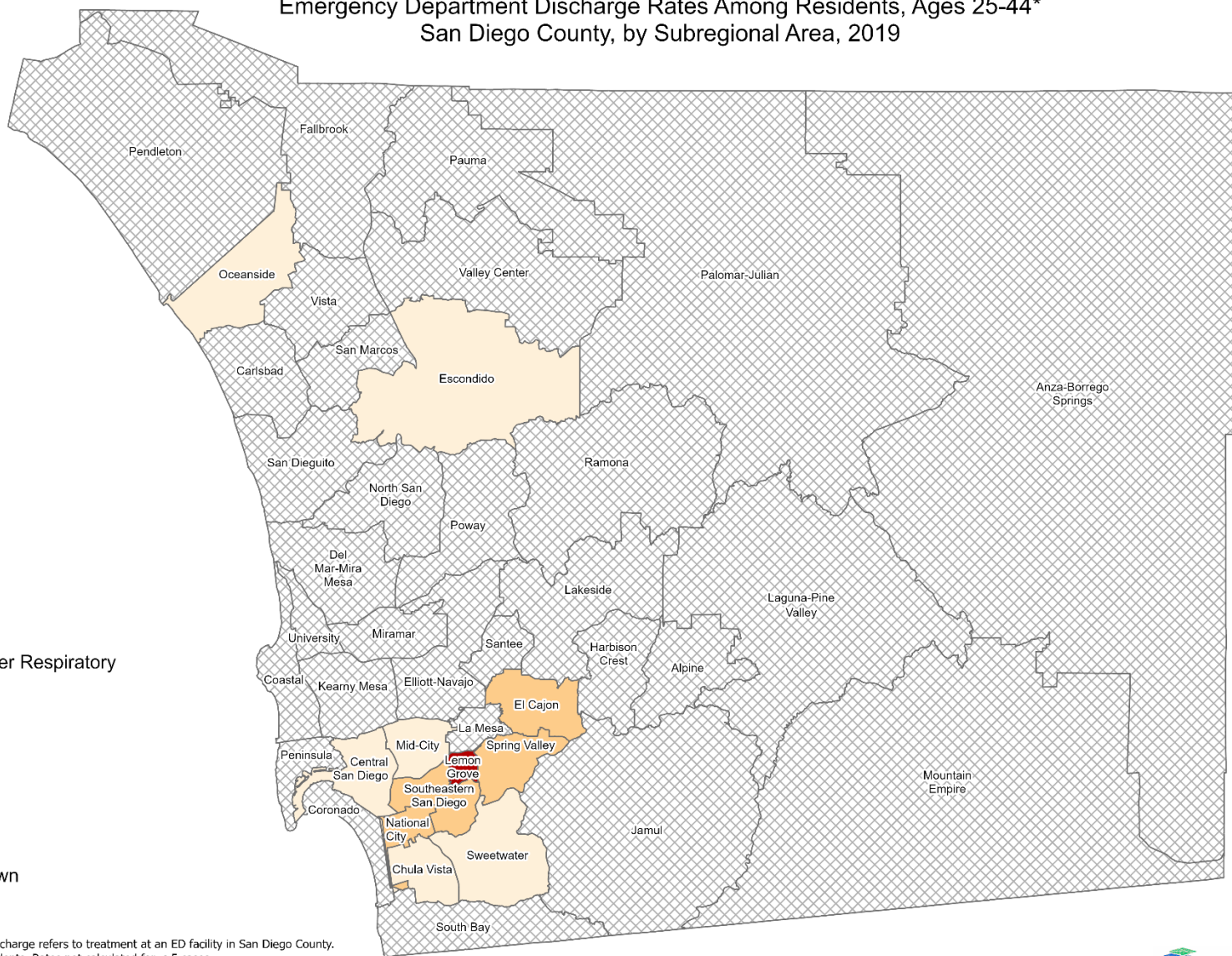
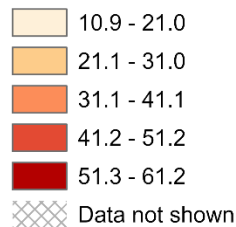




Emergency Department Discharge Rates Among Residents, Ages 25-44* San Diego County, by Subregional Area, 2019

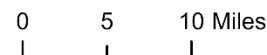


COPD/Chronic Lower Respiratory Diseases



*Emergency Department (ED) Discharge refers to treatment at an ED facility in San Diego County. Rates calculated per 100,000 residents. Rates not calculated for < 5 cases.
Sources: California Office of Statewide Health Planning and Development (OSHPD), 2019 Emergency Department Discharge database. Population estimates San Diego Association of Governments (SANDAG), 2019 v5/2020.

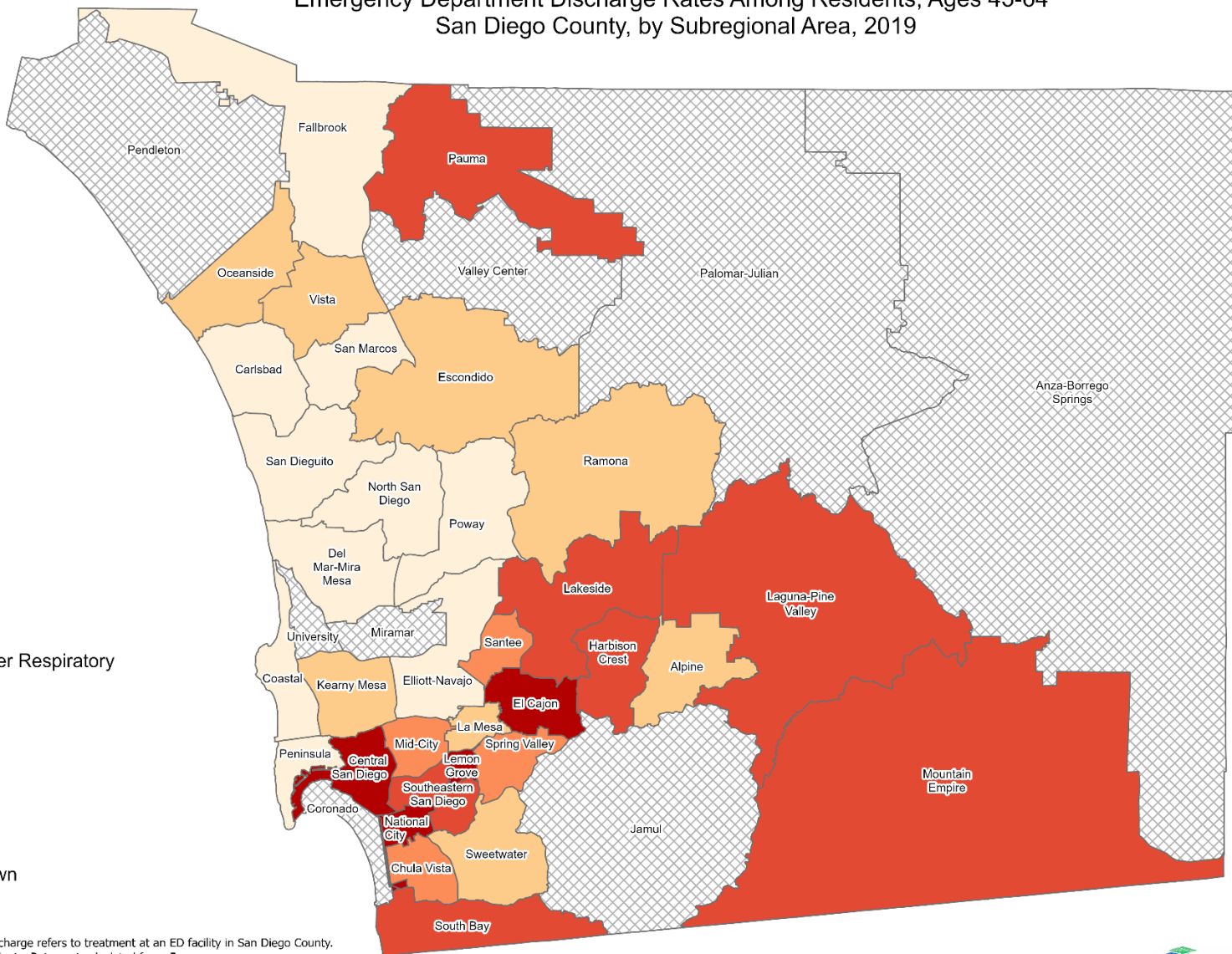
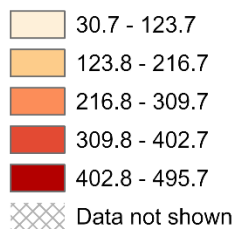
Maps & Analysis by County of San Diego, Health and Human Services Agency, Public Health Services, Community Health Statistics Unit. Contact 619.692.6672. https://www.sandiegocounty.gov/hhsa/programs/phs/community_health_statistics/. December, 2021. LiveWellSD.org.



Emergency Department Discharge Rates Among Residents, Ages 45-64* San Diego County, by Subregional Area, 2019

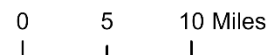


COPD/Chronic Lower Respiratory Diseases



*Emergency Department (ED) Discharge refers to treatment at an ED facility in San Diego County. Rates calculated per 100,000 residents. Rates not calculated for < 5 cases.
Sources: California Office of Statewide Health Planning and Development (OSHPD), 2019 Emergency Department Discharge database. Population estimates San Diego Association of Governments (SANDAG), 2019 v5/2020.

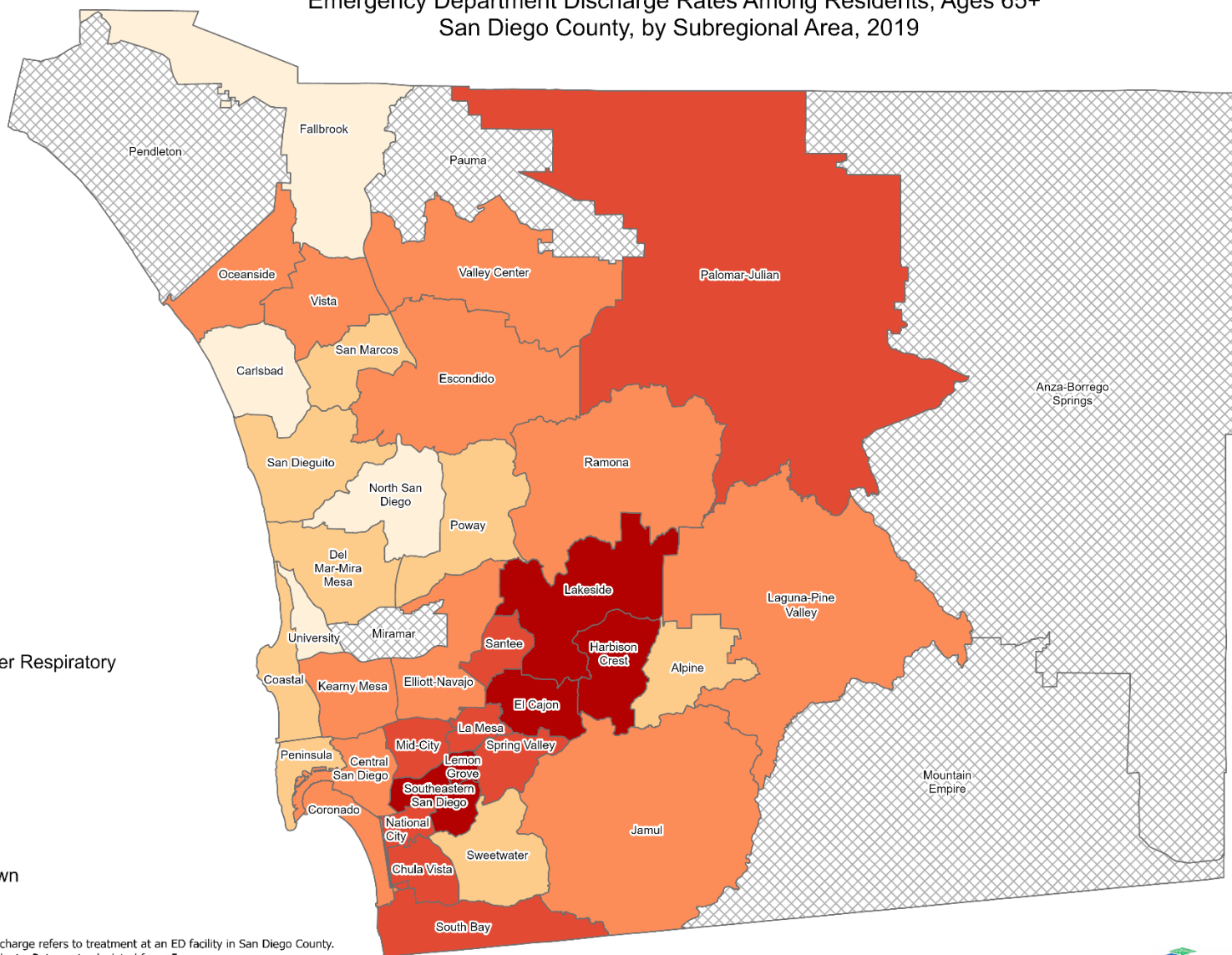
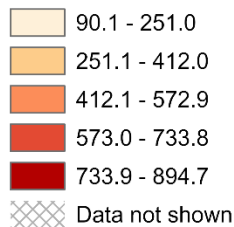
Maps & Analysis by County of San Diego, Health and Human Services Agency, Public Health Services, Community Health Statistics Unit. Contact 619.692.6672. https://www.sandiegocounty.gov/hhsa/programs/phs/community_health_statistics/. December, 2021. LiveWellSD.org.



Emergency Department Discharge Rates Among Residents, Ages 65+* San Diego County, by Subregional Area, 2019

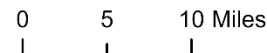


COPD/Chronic Lower Respiratory Diseases



*Emergency Department (ED) Discharge refers to treatment at an ED facility in San Diego County. Rates calculated per 100,000 residents. Rates not calculated for < 5 cases.
Sources: California Office of Statewide Health Planning and Development (OSHPD), 2019 Emergency Department Discharge database. Population estimates San Diego Association of Governments (SANDAG), 2019 v5/2020.

Maps & Analysis by County of San Diego, Health and Human Services Agency, Public Health Services, Community Health Statistics Unit. Contact 619.692.6672. https://www.sandiegocounty.gov/hhsa/programs/phs/community_health_statistics/. December, 2021. LiveWellSD.org.



Section 4

In-Patient Treatment (IPT) Rates Among San Diego County Residents by Demographics, 2019:

- Total Rate
- Race/Ethnicity
 - Asian/Pacific Islander (API)
 - Black
 - Hispanic
 - White
- Age
 - 0-14
 - 15-24
 - 25-44
 - 45-64
 - 65+

No SRA-level rate data available for this section