



MAP ATLAS

Non-Hodgkin's Lymphoma San Diego County, 2019



County of San Diego | Health and Human Services Agency |
Public Health Services | Community Health Statistics Unit

Prepared March 2022

Data Sources - San Diego County, 2019

Death* is based on underlying cause of death among San Diego County residents. Rates calculated per 100,000 residents. Rates not calculated for < 5 cases. Maps not produced for conditions/outcomes with no SRA-level rates. Some sections may have no maps.

Sources: Death data from Vital Records Business Intelligence System (VRBIS), 2019.

Population estimates from San Diego Association of Governments (SANDAG), 2019 v5/2020.

*For substance/drug overdoses, death rate is based on the multiple/contributing cause of death among San Diego County residents.

Hospitalization refers to treatment at a general acute care facility in San Diego County. Rates calculated per 100,000 residents. Rates not calculated for < 5 cases. Maps not produced for conditions/outcomes with no SRA-level rates. Some sections may have no maps.

Sources: California Office of Statewide Health Planning and Development (OSHPD), 2019 Patient Discharge Database.

Population estimates from San Diego Association of Governments (SANDAG), 2019 v5/2020.

Emergency Department (ED) Discharge refers to treatment at an ED facility in San Diego County.

Rates calculated per 100,000 residents. Rates not calculated for < 5 cases. Maps not produced for conditions/outcomes with no SRA-level rates. Some sections may have no maps.

Sources: California Office of Statewide Health Planning and Development (OSHPD), 2019 Emergency Department Discharge database.

Population estimates from San Diego Association of Governments (SANDAG), 2019 v5/2020.

In-Patient Treatment (IPT) refers to treatment at a psychiatric care or chemical rehabilitation facility in San Diego County. Rates calculated per 100,000 residents. Rates not calculated for < 5 cases. Maps not produced for conditions/outcomes with no SRA-level rates. Some sections may have no maps.

Sources: California Office of Statewide Health Planning and Development (OSHPD), 2019 Patient Discharge Database.

Population estimates from San Diego Association of Governments (SANDAG), 2019 v5/2020.

Maps & Analysis by County of San Diego, Health and Human Services Agency, Public Health Services, Community Health Statistics Unit. Contact 619.692.6672. January 2022.

https://www.sandiegocounty.gov/hhsa/programs/phs/community_health_statistics/

LiveWellSD.org.

Contact Information:

Community Health Statistics Unit

3851 Rosecrans Street

San Diego, CA 92110

619.692.6667

Isabel.Corcus@sdcounty.ca.gov

(Epidemiologist II for CHSU)

Niki.Quach1@sdcounty.ca.gov

(Graduate Student Worker for CHSU)

Christopher.OMalley@sdcounty.ca.gov

(Senior Epidemiologist for CHSU)

For more detailed explanation of geography, methods, and sources, see online Community Profile at

<http://www.SDHealthStatistics.com/>

Contents

Section 1: Deaths	4
Section 2: Hospitalizations.....	8
Section 3: Emergency Department (ED) Discharges.....	16
Section 4: In-Patient Treatments (IPT).....	18

Section 1

Death Rates Among San Diego County Residents by Demographics, 2019:

- Total Rate
- Race/Ethnicity
 - Asian/Pacific Islander (API)
 - Black
 - Hispanic
 - White
- Age
 - 0-14
 - 15-24
 - 25-44
 - 45-64
 - 65+

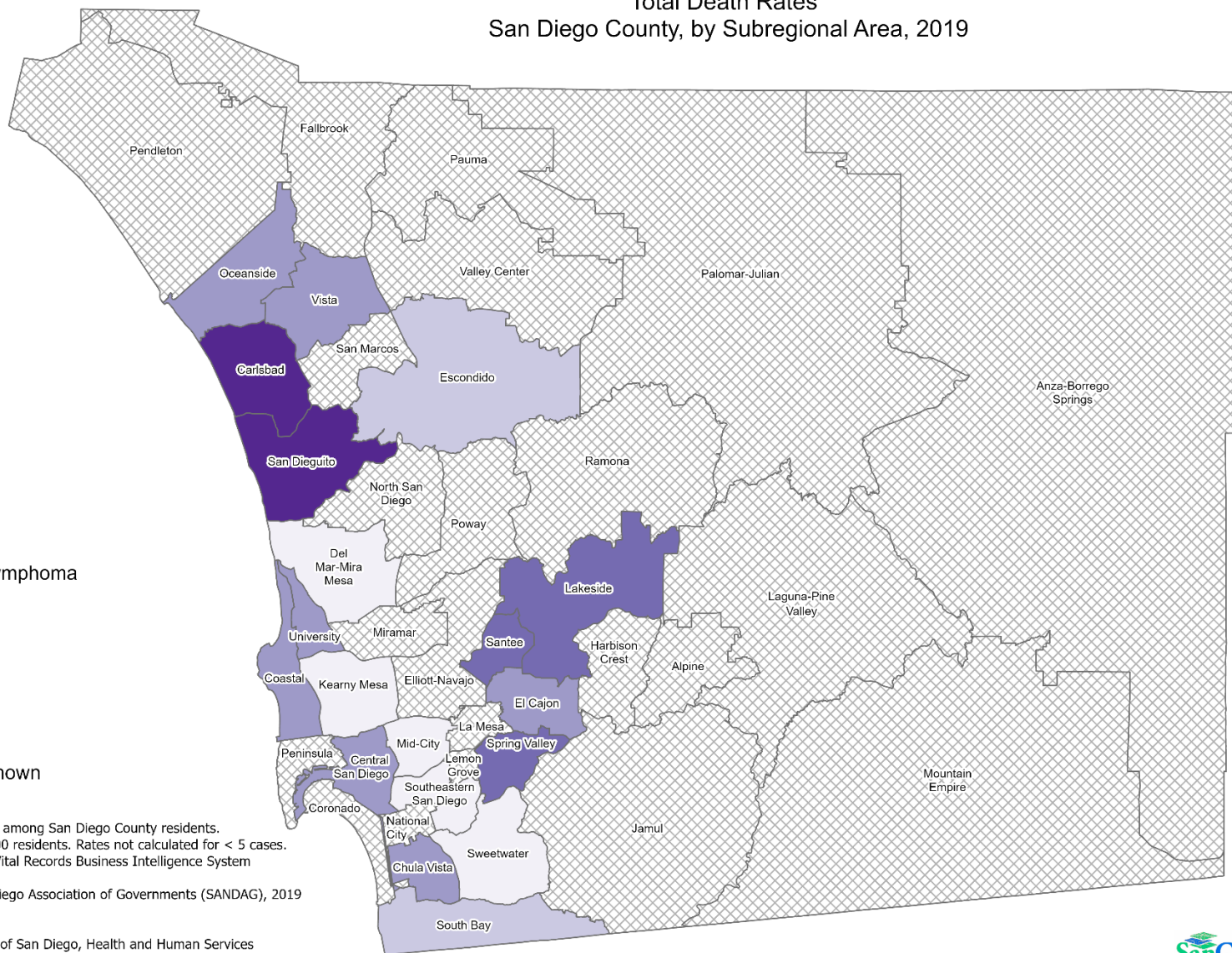
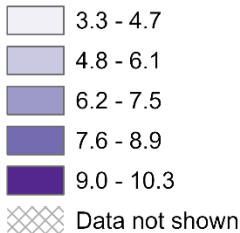


LIVE WELL
SAN DIEGO

Total Death Rates* San Diego County, by Subregional Area, 2019



Non-Hodgkin's Lymphoma

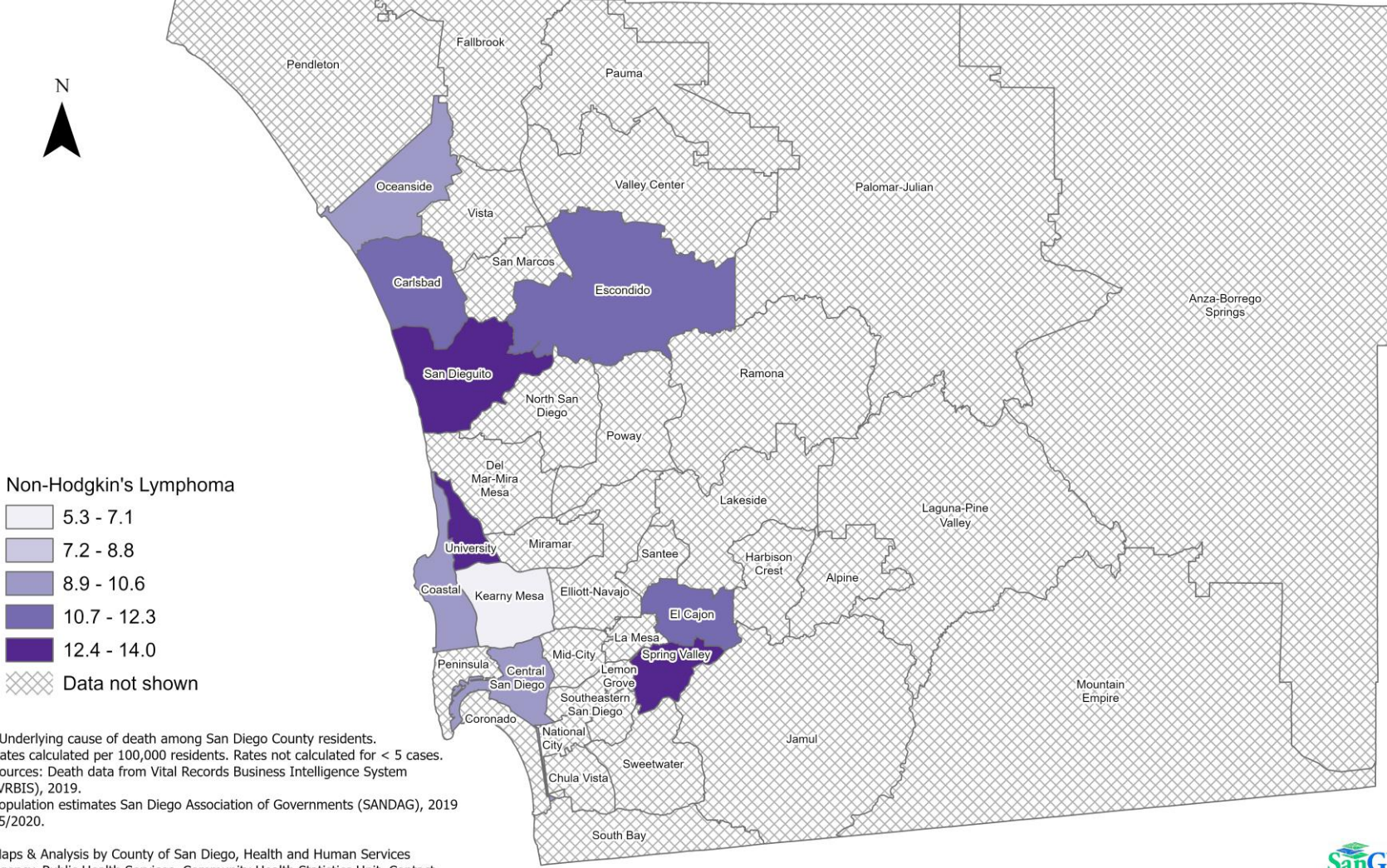


*Underlying cause of death among San Diego County residents.
 Rates calculated per 100,000 residents. Rates not calculated for < 5 cases.
 Sources: Death data from Vital Records Business Intelligence System (VRBIS), 2019.
 Population estimates San Diego Association of Governments (SANDAG), 2019 v5/2020.

Maps & Analysis by County of San Diego, Health and Human Services Agency, Public Health Services, Community Health Statistics Unit. Contact 619.692.6672. https://www.sandiegocounty.gov/hhsa/programs/phs/community_health_statistics/. December, 2021. LiveWellSD.org.



Death Rates Among White Residents* San Diego County, by Subregional Area, 2019

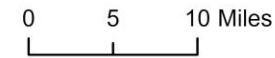


Non-Hodgkin's Lymphoma

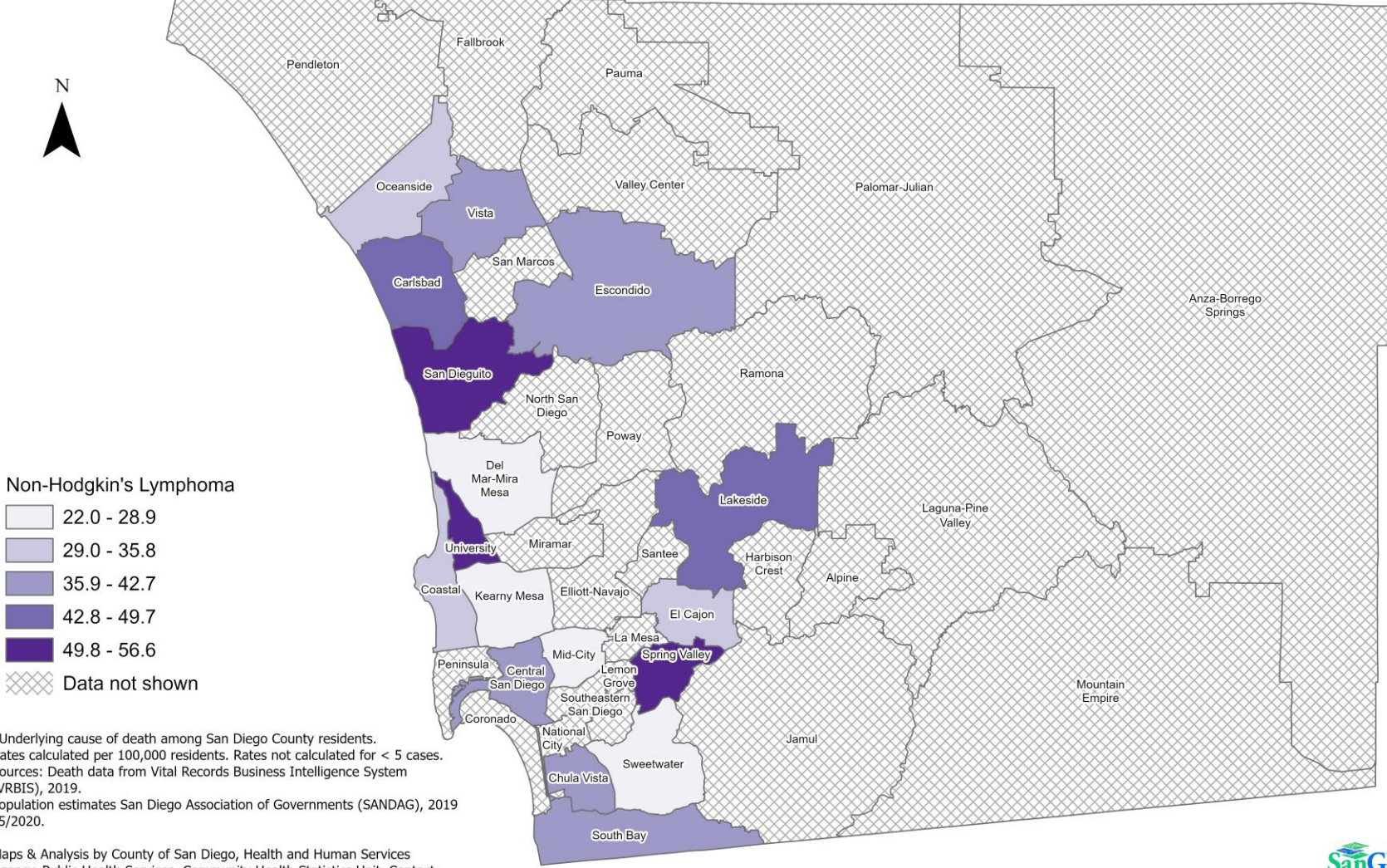
- 5.3 - 7.1
- 7.2 - 8.8
- 8.9 - 10.6
- 10.7 - 12.3
- 12.4 - 14.0
- Data not shown

*Underlying cause of death among San Diego County residents. Rates calculated per 100,000 residents. Rates not calculated for < 5 cases. Sources: Death data from Vital Records Business Intelligence System (VRBIS), 2019. Population estimates San Diego Association of Governments (SANDAG), 2019 v5/2020.

Maps & Analysis by County of San Diego, Health and Human Services Agency, Public Health Services, Community Health Statistics Unit. Contact 619.692.6672. https://www.sandiegocounty.gov/hhsa/programs/phs/community_health_statistics/. December, 2021. LiveWellSD.org.



Death Rates Among Residents, Ages 65+* San Diego County, by Subregional Area, 2019

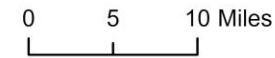


Non-Hodgkin's Lymphoma

- 22.0 - 28.9
- 29.0 - 35.8
- 35.9 - 42.7
- 42.8 - 49.7
- 49.8 - 56.6
- Data not shown

*Underlying cause of death among San Diego County residents. Rates calculated per 100,000 residents. Rates not calculated for < 5 cases. Sources: Death data from Vital Records Business Intelligence System (VRBIS), 2019. Population estimates San Diego Association of Governments (SANDAG), 2019 v5/2020.

Maps & Analysis by County of San Diego, Health and Human Services Agency, Public Health Services, Community Health Statistics Unit. Contact 619.692.6672. https://www.sandiegocounty.gov/hhsa/programs/phs/community_health_statistics/. December, 2021. LiveWellSD.org.

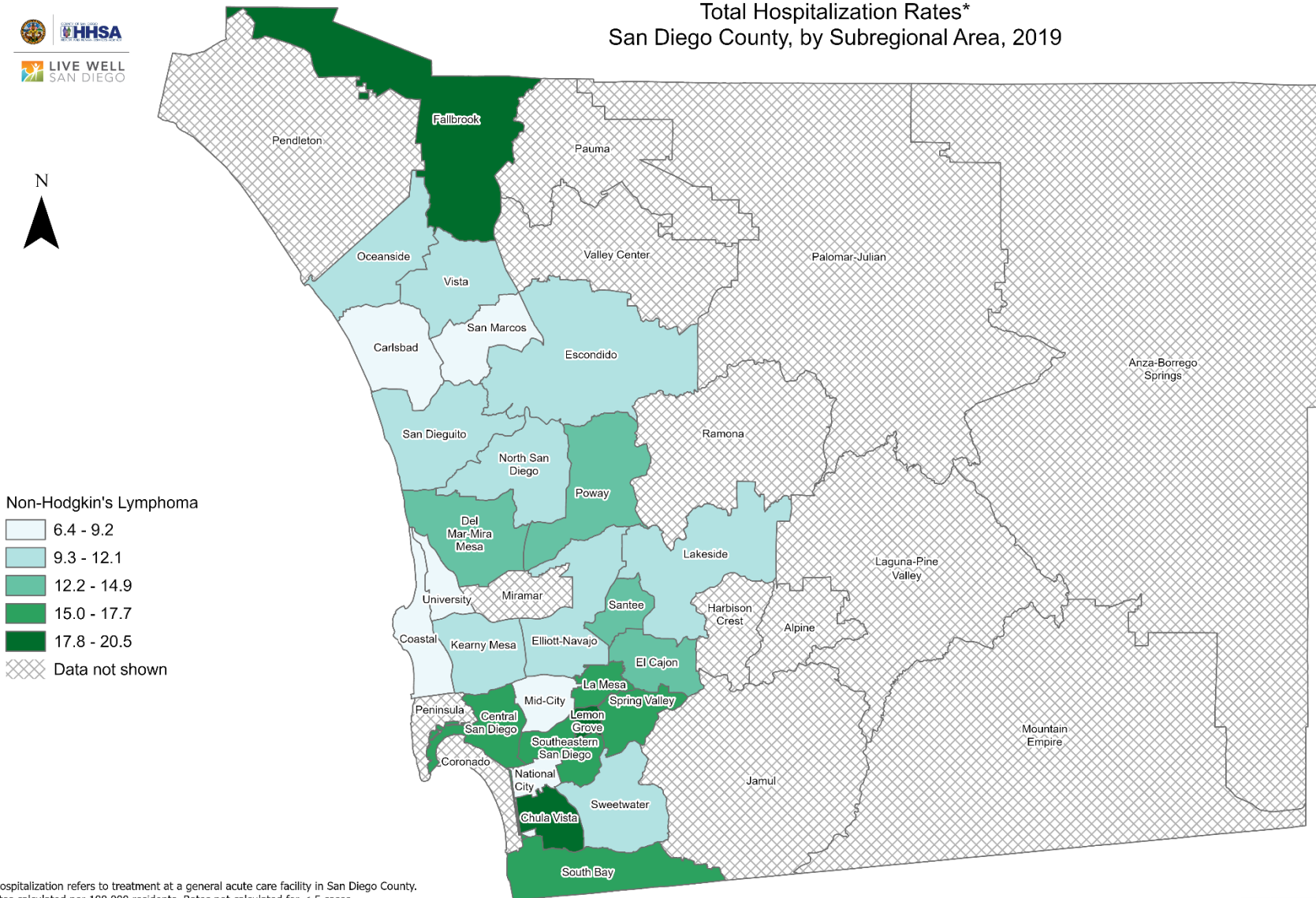


Section 2

Hospitalization Rates Among San Diego County Residents by Demographics, 2019:

- Total Rate
- Race/Ethnicity
 - Asian/Pacific Islander (API)
 - Black
 - Hispanic
 - White
- Age
 - 0-14
 - 15-24
 - 25-44
 - 45-64
 - 65+

Total Hospitalization Rates* San Diego County, by Subregional Area, 2019



*Hospitalization refers to treatment at a general acute care facility in San Diego County. Rates calculated per 100,000 residents. Rates not calculated for < 5 cases.
Sources: California Office of Statewide Health Planning and Development (OSHPD), 2019 Patient Discharge Database.
Population estimates San Diego Association of Governments (SANDAG), 2019 v5/2020.

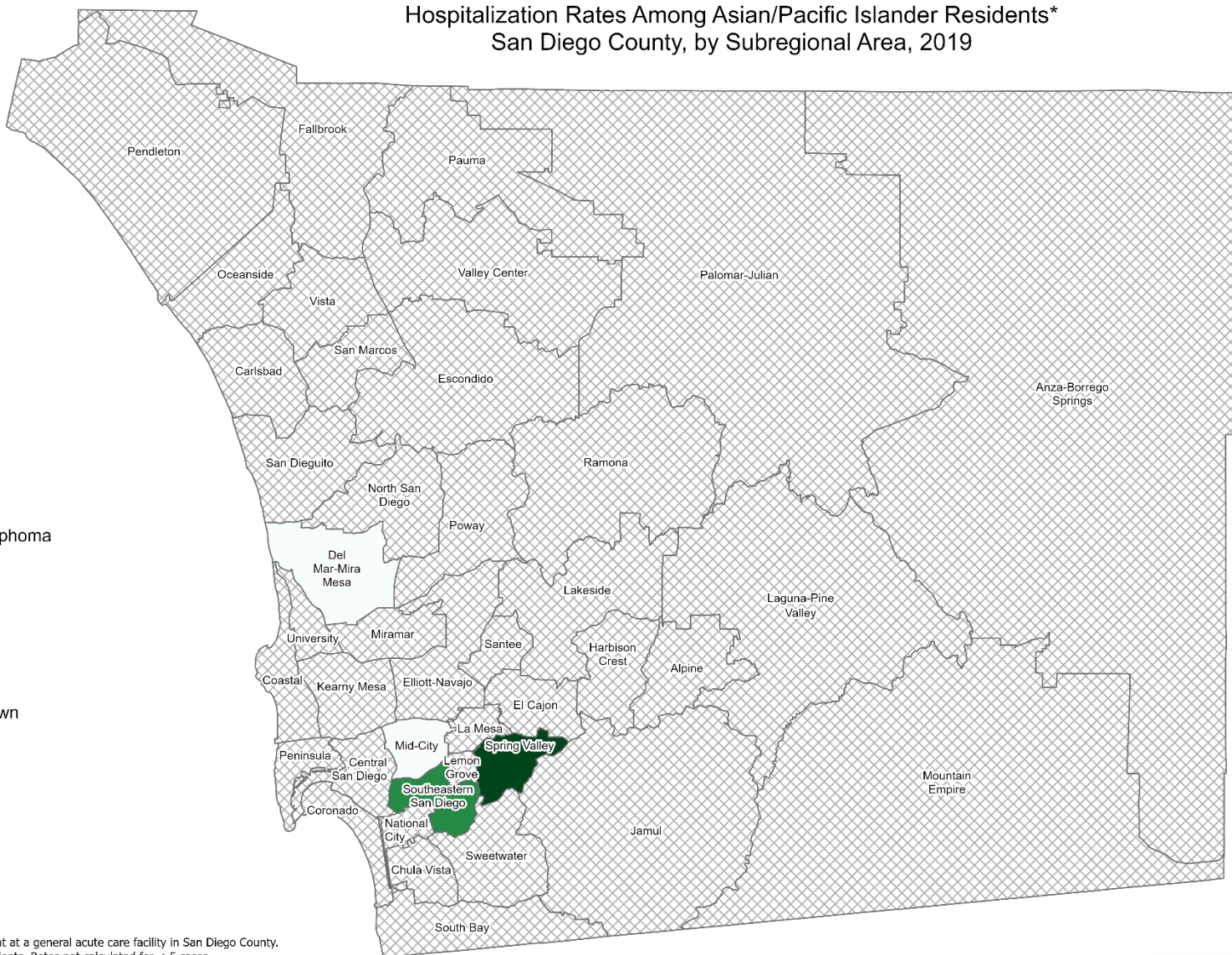
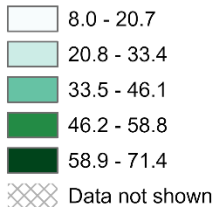




Hospitalization Rates Among Asian/Pacific Islander Residents* San Diego County, by Subregional Area, 2019

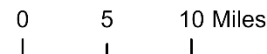


Non-Hodgkin's Lymphoma



*Hospitalization refers to treatment at a general acute care facility in San Diego County. Rates calculated per 100,000 residents. Rates not calculated for < 5 cases.
Sources: California Office of Statewide Health Planning and Development (OSHPD), 2019 Patient Discharge Database.
Population estimates San Diego Association of Governments (SANDAG), 2019 v5/2020.

Maps & Analysis by County of San Diego, Health and Human Services Agency, Public Health Services, Community Health Statistics Unit. Contact 619.692.6672. https://www.sandiegocounty.gov/hhsa/programs/phs/community_health_statistics/. December 2021. LiveWellSD.org.

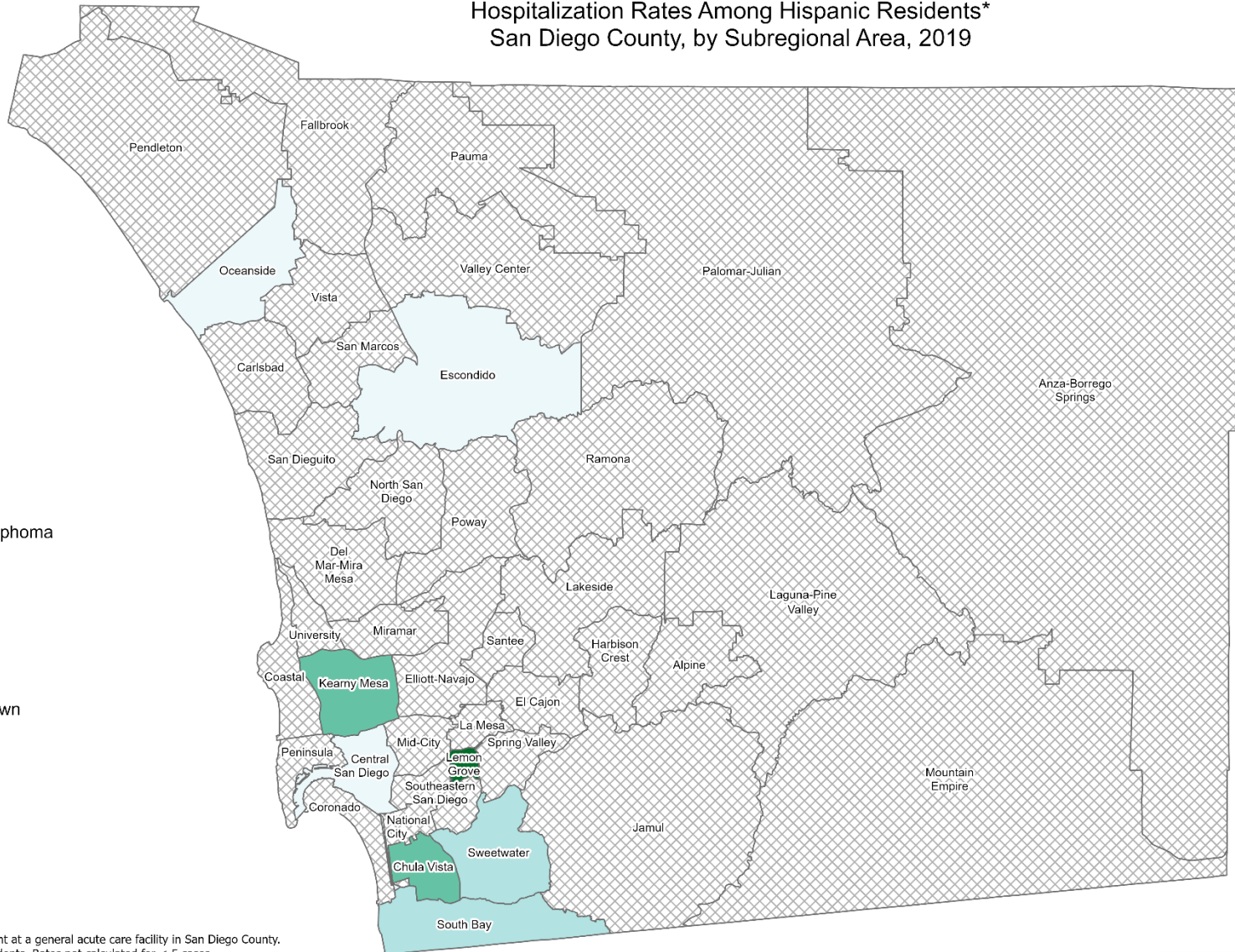
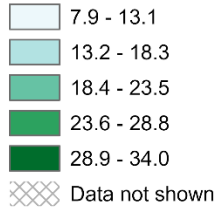




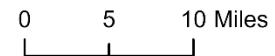
Hospitalization Rates Among Hispanic Residents* San Diego County, by Subregional Area, 2019



Non-Hodgkin's Lymphoma



*Hospitalization refers to treatment at a general acute care facility in San Diego County. Rates calculated per 100,000 residents. Rates not calculated for < 5 cases.
Sources: California Office of Statewide Health Planning and Development (OSHPD), 2019 Patient Discharge Database.
Population estimates San Diego Association of Governments (SANDAG), 2019 v5/2020.



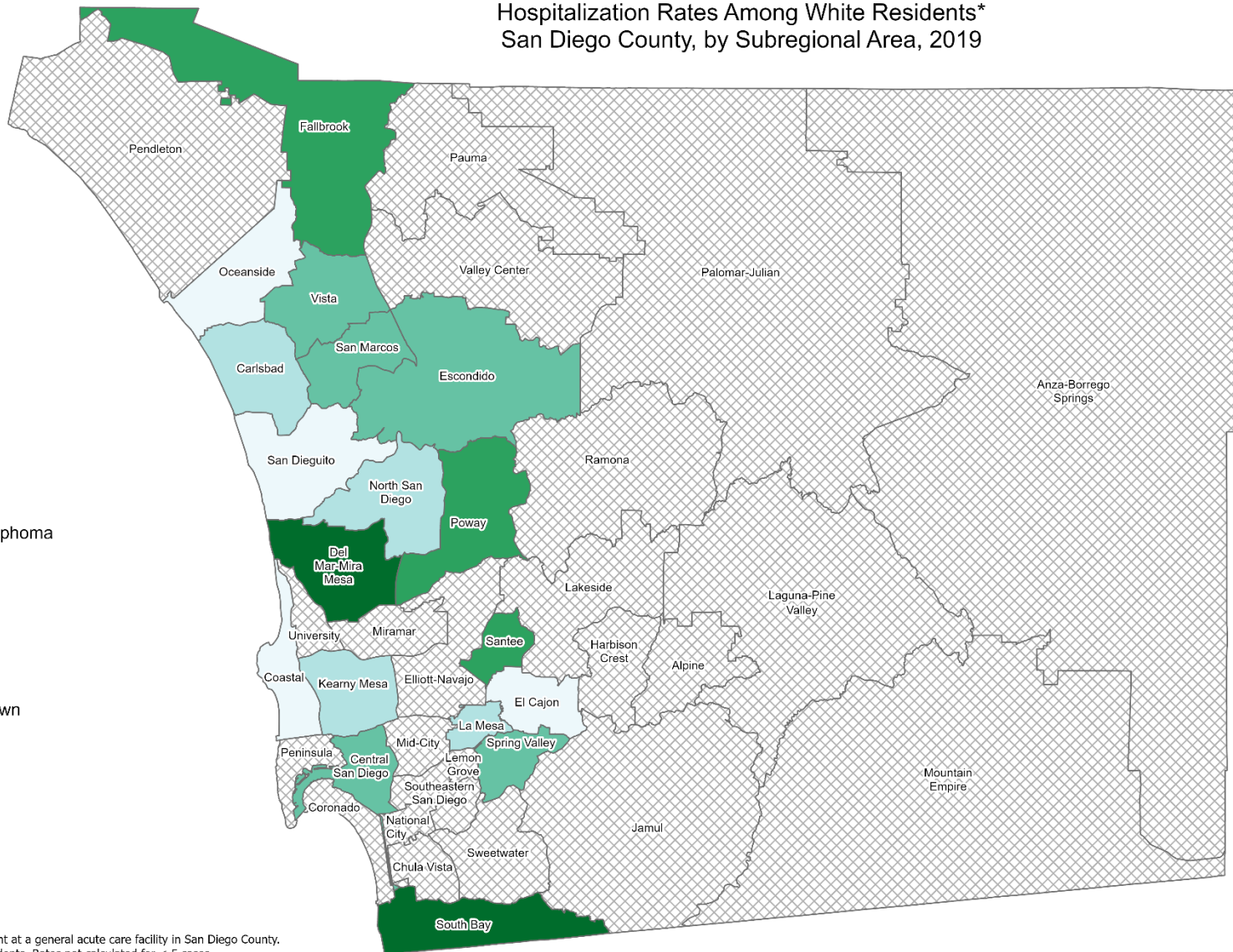
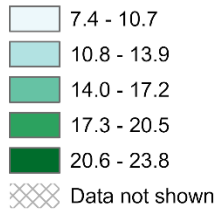
Maps & Analysis by County of San Diego, Health and Human Services Agency, Public Health Services, Community Health Statistics Unit. Contact 619.692.6672. https://www.sandiegocounty.gov/hhsa/programs/phs/community_health_statistics/. December 2021.
LiveWellSD.org.



Hospitalization Rates Among White Residents* San Diego County, by Subregional Area, 2019



Non-Hodgkin's Lymphoma



*Hospitalization refers to treatment at a general acute care facility in San Diego County. Rates calculated per 100,000 residents. Rates not calculated for < 5 cases.
Sources: California Office of Statewide Health Planning and Development (OSHPD), 2019 Patient Discharge Database.
Population estimates San Diego Association of Governments (SANDAG), 2019 v5/2020.

Maps & Analysis by County of San Diego, Health and Human Services Agency, Public Health Services, Community Health Statistics Unit. Contact 619.692.6672. https://www.sandiegocounty.gov/hhsa/programs/phs/community_health_statistics/. December 2021.
LiveWellSD.org.

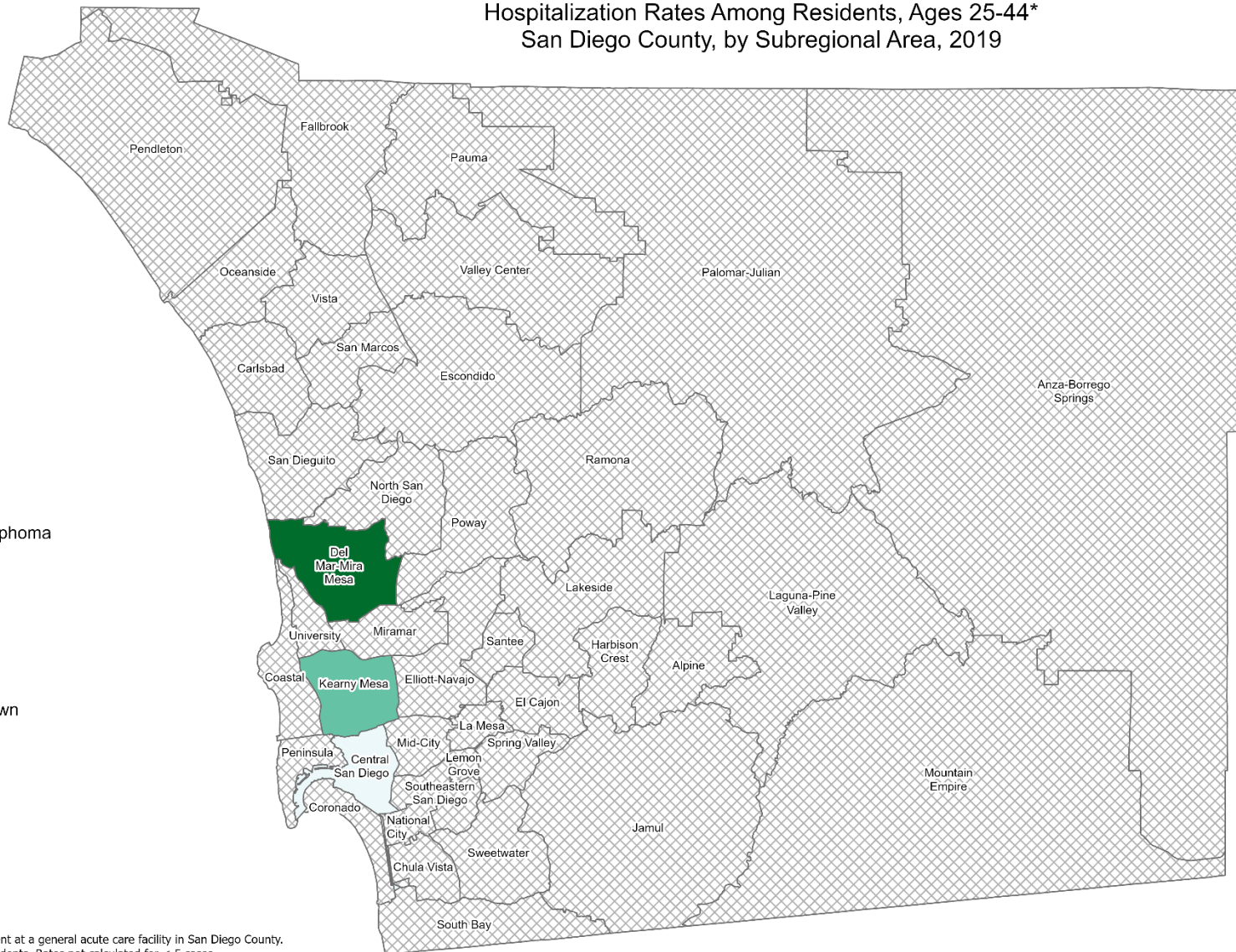
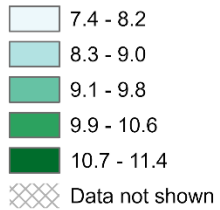




Hospitalization Rates Among Residents, Ages 25-44* San Diego County, by Subregional Area, 2019



Non-Hodgkin's Lymphoma



*Hospitalization refers to treatment at a general acute care facility in San Diego County. Rates calculated per 100,000 residents. Rates not calculated for < 5 cases.
Sources: California Office of Statewide Health Planning and Development (OSHPD), 2019 Patient Discharge Database.
Population estimates San Diego Association of Governments (SANDAG), 2019 v5/2020.

Maps & Analysis by County of San Diego, Health and Human Services Agency, Public Health Services, Community Health Statistics Unit. Contact 619.692.6672. https://www.sandiegocounty.gov/hhsa/programs/phs/community_health_statistics/. December 2021.
LiveWellSD.org.

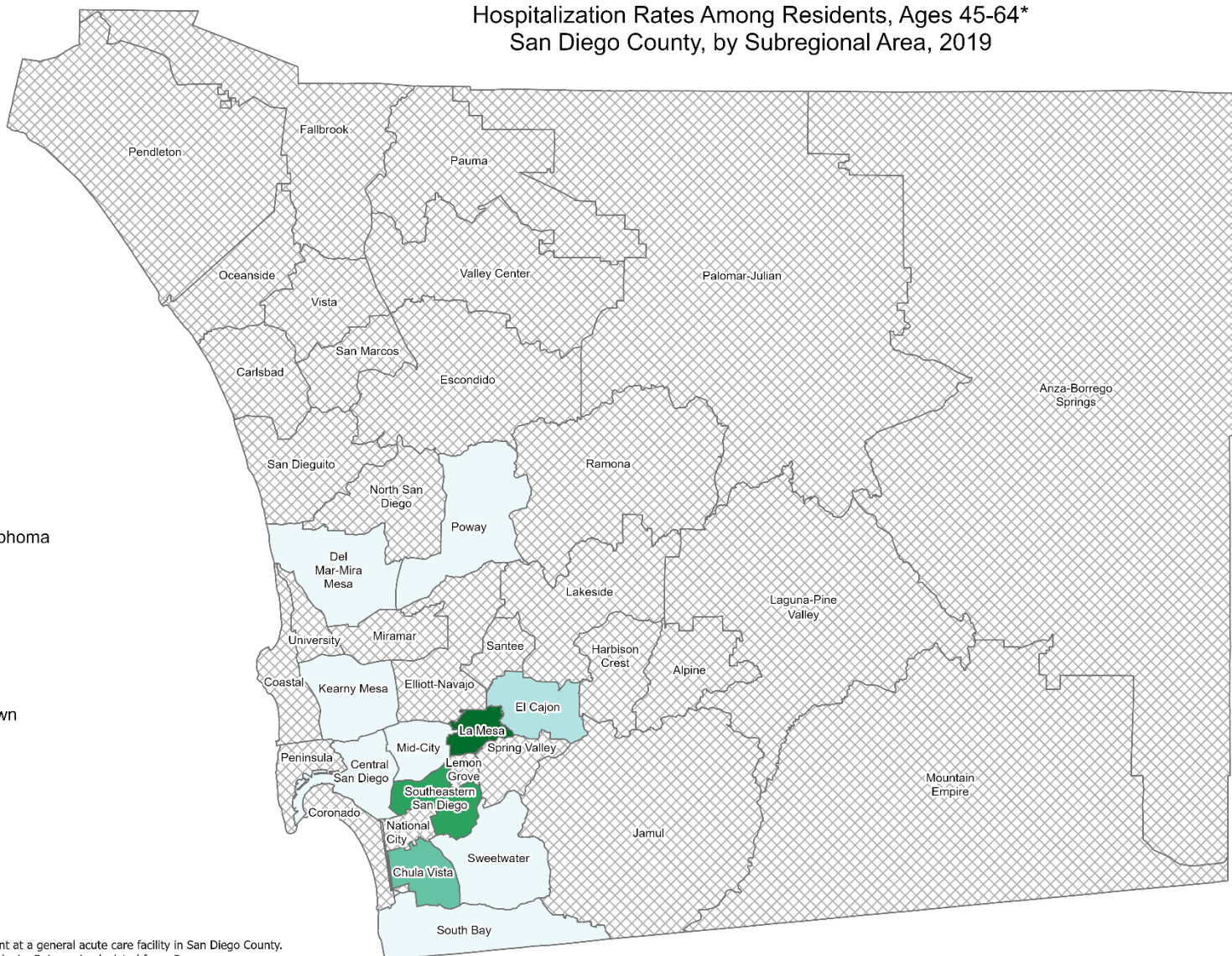
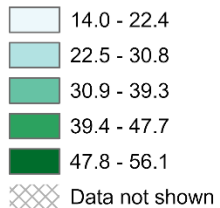




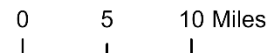
Hospitalization Rates Among Residents, Ages 45-64* San Diego County, by Subregional Area, 2019



Non-Hodgkin's Lymphoma



*Hospitalization refers to treatment at a general acute care facility in San Diego County. Rates calculated per 100,000 residents. Rates not calculated for < 5 cases.
Sources: California Office of Statewide Health Planning and Development (OSHPD), 2019 Patient Discharge Database.
Population estimates San Diego Association of Governments (SANDAG), 2019 v5/2020.

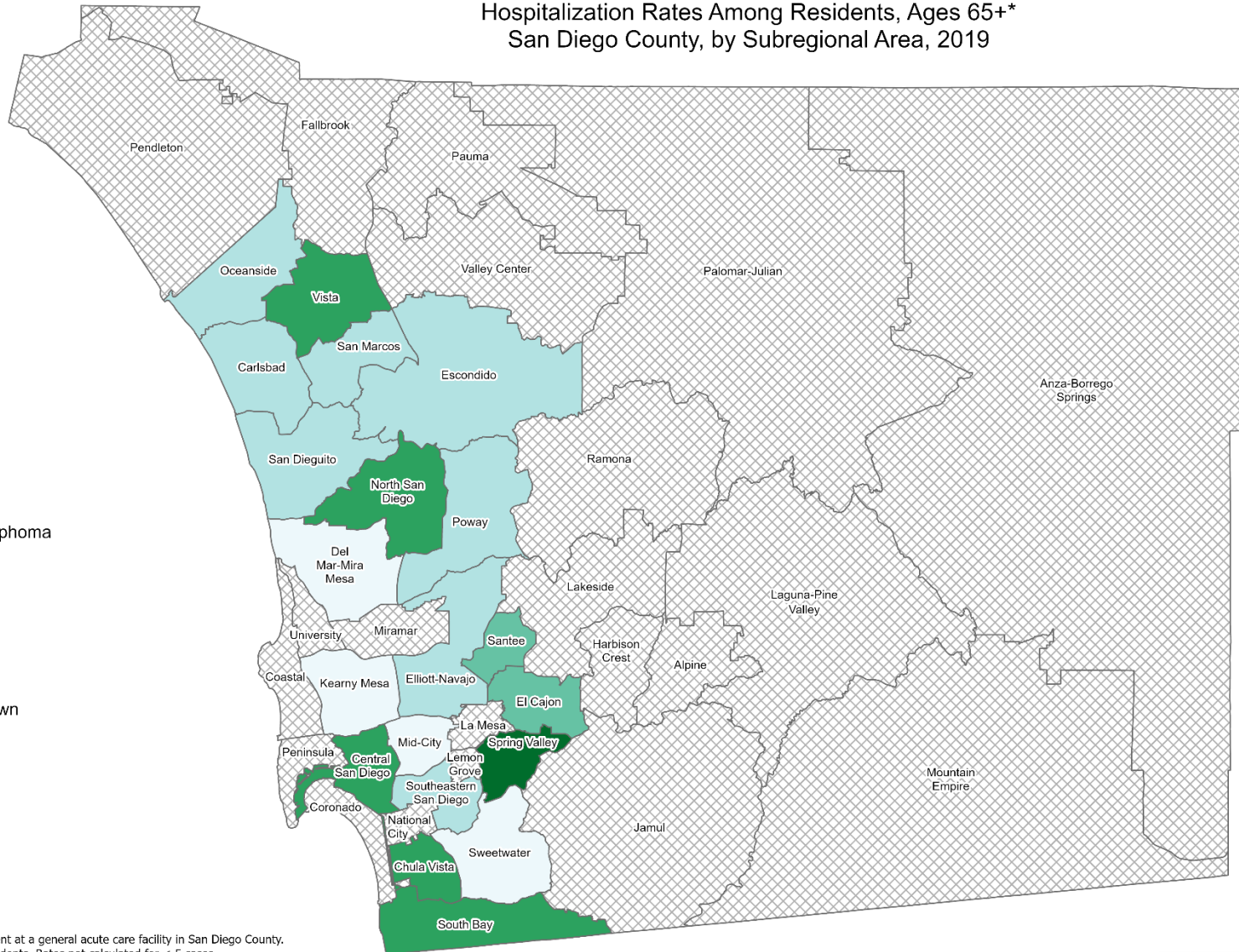
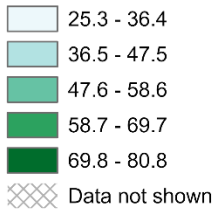


Maps & Analysis by County of San Diego, Health and Human Services Agency, Public Health Services, Community Health Statistics Unit. Contact 619.692.6672. https://www.sandiegocounty.gov/hhsa/programs/phs/community_health_statistics/. December 2021.
LiveWellSD.org.

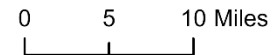
Hospitalization Rates Among Residents, Ages 65+* San Diego County, by Subregional Area, 2019



Non-Hodgkin's Lymphoma



*Hospitalization refers to treatment at a general acute care facility in San Diego County. Rates calculated per 100,000 residents. Rates not calculated for < 5 cases.
Sources: California Office of Statewide Health Planning and Development (OSHPD), 2019 Patient Discharge Database.
Population estimates San Diego Association of Governments (SANDAG), 2019 v5/2020.



Section 3

Emergency Department (ED) Discharge Rates Among San Diego County Residents by Demographics, 2019:

- Total Rate
- Race/Ethnicity
 - Asian/Pacific Islander (API)
 - Black
 - Hispanic
 - White
- Age
 - 0-14
 - 15-24
 - 25-44
 - 45-64
 - 65+

No SRA-level rate data available for this section

Section 4

In-Patient Treatment (IPT) Rates Among San Diego County Residents by Demographics, 2019:

- Total Rate
- Race/Ethnicity
 - Asian/Pacific Islander (API)
 - Black
 - Hispanic
 - White
- Age
 - 0-14
 - 15-24
 - 25-44
 - 45-64
 - 65+

No SRA-level rate data available for this section