



# MAP ATLAS

## Opioid Overdoses San Diego County, 2019



County of San Diego | Health and Human Services Agency  
Public Health Services | Community Health Statistics Unit

Prepared January 2022

## Data Sources - San Diego County, 2019

**Death\*** is based on underlying cause of death among San Diego County residents. Rates calculated per 100,000 residents. Rates not calculated for < 5 cases. Maps not produced for conditions/outcomes with no SRA-level rates. Some sections may have no maps.

Sources: Death data from Vital Records Business Intelligence System (VRBIS), 2019.

Population estimates from San Diego Association of Governments (SANDAG), 2019 v5/2020.

\*For substance/drug overdoses, death rate is based on the multiple/contributing cause of death among San Diego County residents.

**Hospitalization** refers to treatment at a general acute care facility in San Diego County. Rates calculated per 100,000 residents. Rates not calculated for < 5 cases. Maps not produced for conditions/outcomes with no SRA-level rates. Some sections may have no maps.

Sources: California Office of Statewide Health Planning and Development (OSHPD), 2019 Patient Discharge Database.

Population estimates from San Diego Association of Governments (SANDAG), 2019 v5/2020.

**Emergency Department (ED) Discharge** refers to treatment at an ED facility in San Diego County.

Rates calculated per 100,000 residents. Rates not calculated for < 5 cases. Maps not produced for conditions/outcomes with no SRA-level rates. Some sections may have no maps.

Sources: California Office of Statewide Health Planning and Development (OSHPD), 2019 Emergency Department Discharge database.

Population estimates from San Diego Association of Governments (SANDAG), 2019 v5/2020.

**In-Patient Treatment (IPT)** refers to treatment at a psychiatric care or chemical rehabilitation facility in San Diego County. Rates calculated per 100,000 residents. Rates not calculated for < 5 cases. Maps not produced for conditions/outcomes with no SRA-level rates. Some sections may have no maps.

Sources: California Office of Statewide Health Planning and Development (OSHPD), 2019 Patient Discharge Database.

Population estimates from San Diego Association of Governments (SANDAG), 2019 v5/2020.

Maps & Analysis by County of San Diego, Health and Human Services Agency, Public Health Services, Community Health Statistics Unit. Contact 619.692.6672. January 2022.

[https://www.sandiegocounty.gov/hhsa/programs/phs/community\\_health\\_statistics/](https://www.sandiegocounty.gov/hhsa/programs/phs/community_health_statistics/)

LiveWellSD.org.

### Contact Information:

Community Health Statistics Unit

3851 Rosecrans Street

San Diego, CA 92110

619.692.6667

[Isabel.Corcoc@sdcounty.ca.gov](mailto:Isabel.Corcoc@sdcounty.ca.gov)

(Epidemiologist II for CHSU)

[Niki.Quach1@sdcounty.ca.gov](mailto:Niki.Quach1@sdcounty.ca.gov)

(Epidemiology Analyst Intern for CHSU)

[Christopher.OMalley@sdcounty.ca.gov](mailto:Christopher.OMalley@sdcounty.ca.gov)

(Senior Epidemiologist for CHSU)

For more detailed explanation of geography, methods, and sources, see online Community Profile at

<http://www.SDHealthStatistics.com/>

# Contents

Section 1: Deaths .....	4
Section 2: Hospitalizations.....	10
Section 3: Emergency Department (ED) Discharges.....	18
Section 4: In-Patient Treatments (IPT).....	27

# Section 1

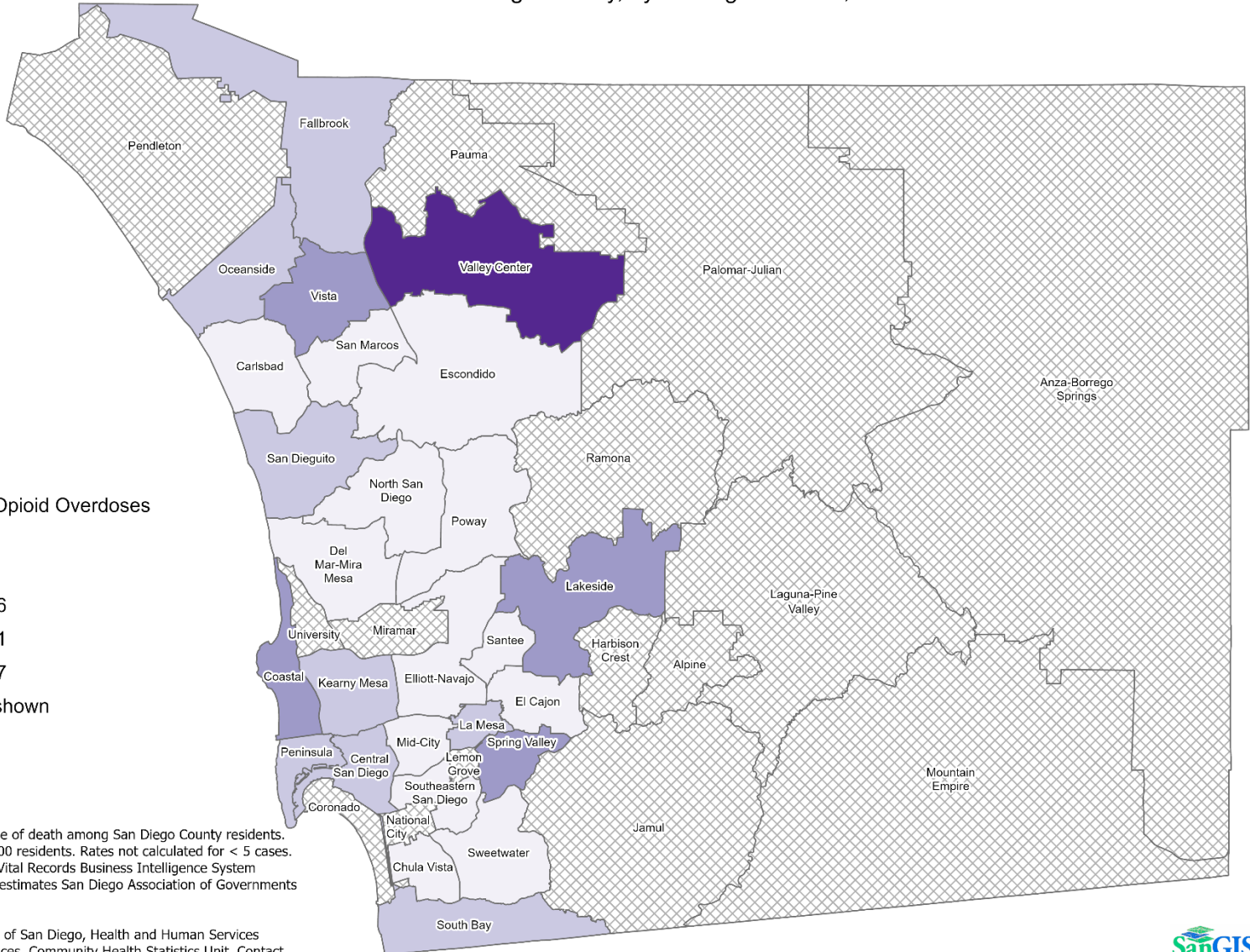
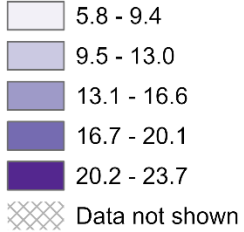
## **Death Rates Among San Diego County Residents by Demographics, 2019:**

- Total Rate
- Race/Ethnicity
  - Asian/Pacific Islander (API)
  - Black
  - Hispanic
  - White
- Age
  - 0-14
  - 15-24
  - 25-44
  - 45-64
  - 65+

## Total Death Rates\* San Diego County, by Subregional Area, 2019

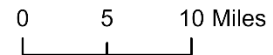


### Any Mention of Opioid Overdoses



\*Multiple/contributing cause of death among San Diego County residents. Rates calculated per 100,000 residents. Rates not calculated for < 5 cases. Sources: Death data from Vital Records Business Intelligence System (VRBIS), 2019. Population estimates San Diego Association of Governments (SANDAG), 2019 v5/2020.

Maps & Analysis by County of San Diego, Health and Human Services Agency, Public Health Services, Community Health Statistics Unit. Contact 619.692.6672. [https://www.sandiegocounty.gov/hhsa/programs/phs/community\\_health\\_statistics/](https://www.sandiegocounty.gov/hhsa/programs/phs/community_health_statistics/). December, 2021. LiveWellSD.org.

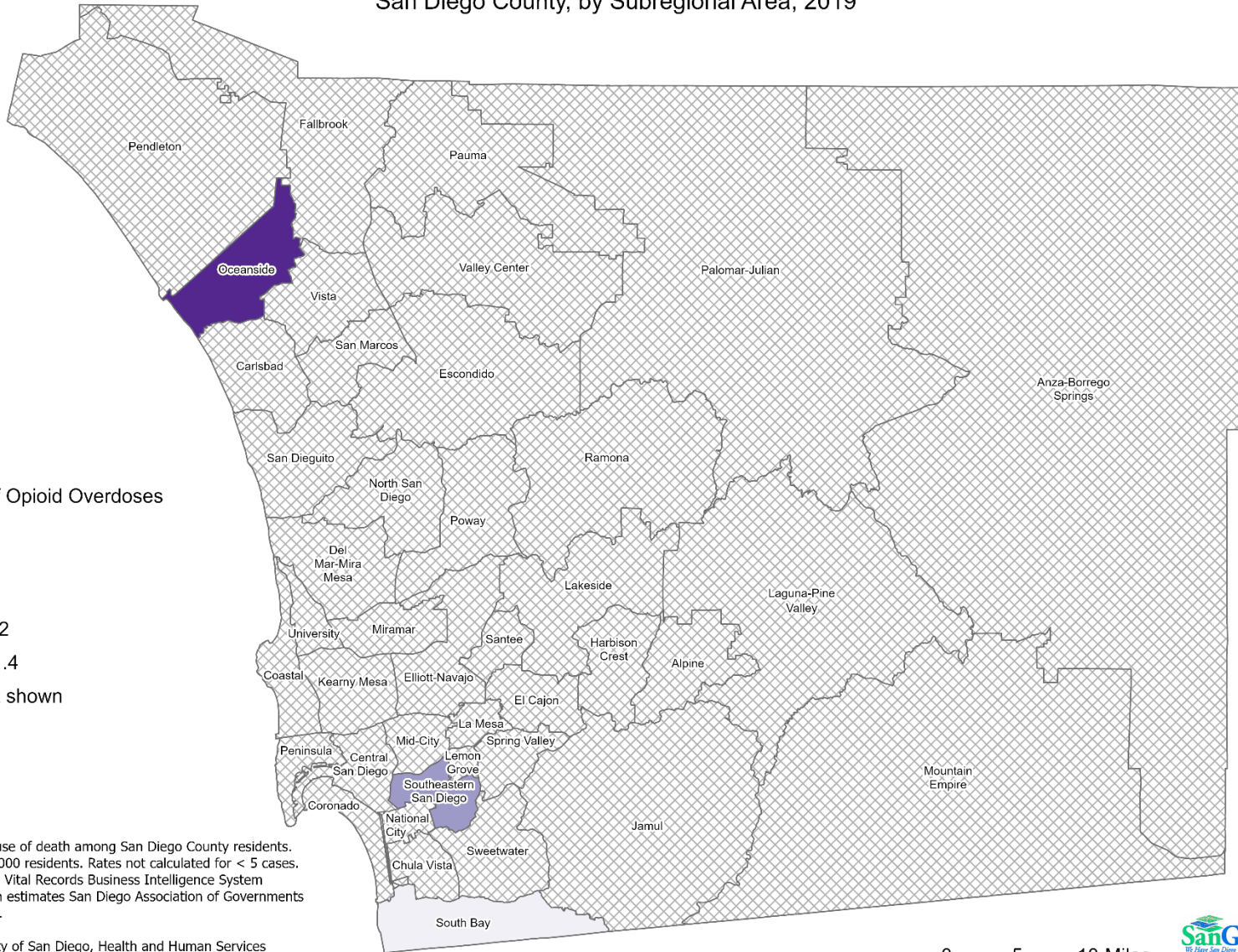
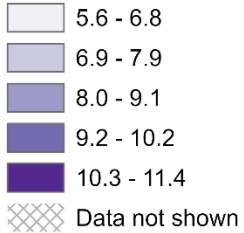




## Death Rates Among Hispanic Residents\* San Diego County, by Subregional Area, 2019

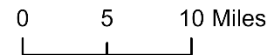


### Any Mention of Opioid Overdoses



\*Multiple/contributing cause of death among San Diego County residents. Rates calculated per 100,000 residents. Rates not calculated for < 5 cases. Sources: Death data from Vital Records Business Intelligence System (VRBIS), 2019. Population estimates San Diego Association of Governments (SANDAG), 2019 v5/2020.

Maps & Analysis by County of San Diego, Health and Human Services Agency, Public Health Services, Community Health Statistics Unit. Contact 619.692.6672. [https://www.sandiegocounty.gov/hhsa/programs/phs/community\\_health\\_statistics/](https://www.sandiegocounty.gov/hhsa/programs/phs/community_health_statistics/). December, 2021. LiveWellSD.org.

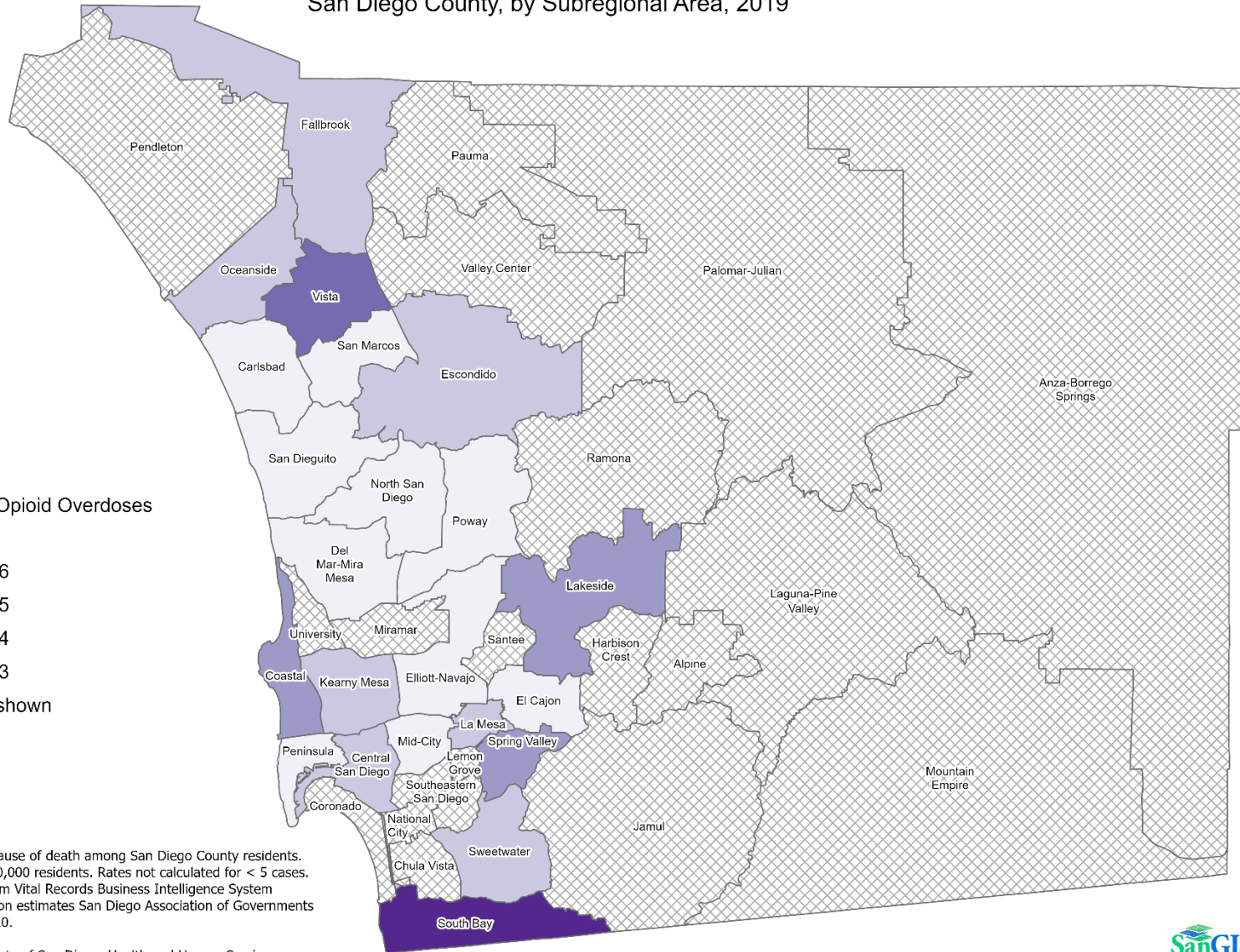
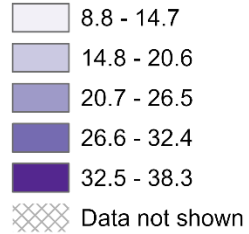




### Death Rates Among White Residents\* San Diego County, by Subregional Area, 2019



#### Any Mention of Opioid Overdoses



\*Multiple/contributing cause of death among San Diego County residents. Rates calculated per 100,000 residents. Rates not calculated for < 5 cases. Sources: Death data from Vital Records Business Intelligence System (VRBIS), 2019. Population estimates San Diego Association of Governments (SANDAG), 2019 v5/2020.

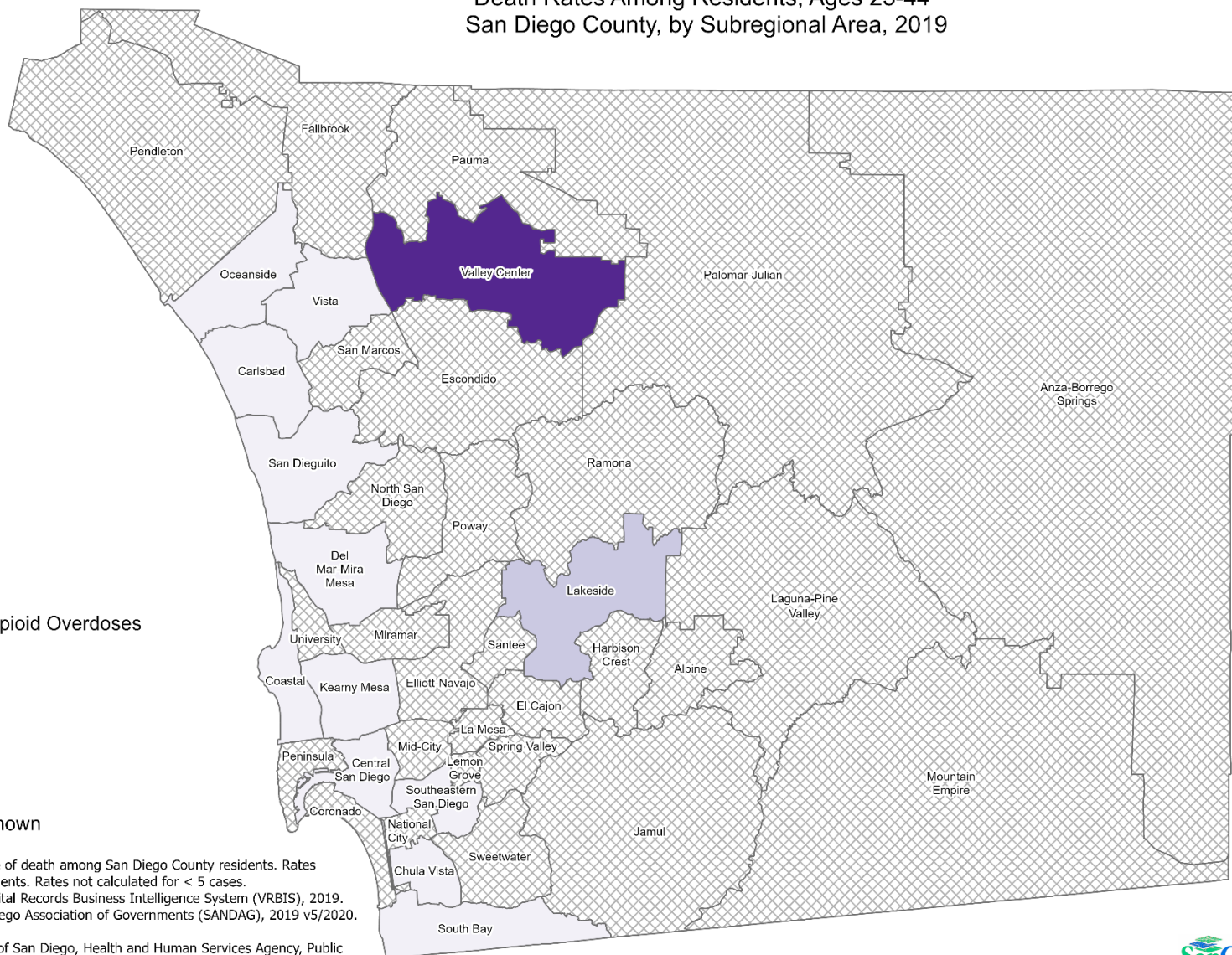
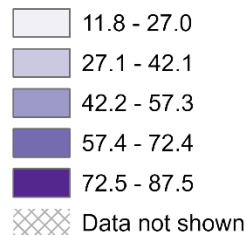
Maps & Analysis by County of San Diego, Health and Human Services Agency, Public Health Services, Community Health Statistics Unit. Contact 619.692.6672. [https://www.sandiegocounty.gov/hhsa/programs/phs/community\\_health\\_statistics/](https://www.sandiegocounty.gov/hhsa/programs/phs/community_health_statistics/). December, 2021. LiveWellSD.org.



## Death Rates Among Residents, Ages 25-44\* San Diego County, by Subregional Area, 2019

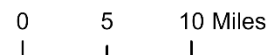


### Any Mention of Opioid Overdoses



\*Multiple/contributing cause of death among San Diego County residents. Rates calculated per 100,000 residents. Rates not calculated for < 5 cases.  
Sources: Death data from Vital Records Business Intelligence System (VRBIS), 2019. Population estimates San Diego Association of Governments (SANDAG), 2019 v5/2020.

Maps & Analysis by County of San Diego, Health and Human Services Agency, Public Health Services, Community Health Statistics Unit. Contact 619.692.6672. [https://www.sandiegocounty.gov/hhsa/programs/phs/community\\_health\\_statistics/](https://www.sandiegocounty.gov/hhsa/programs/phs/community_health_statistics/). December, 2021.  
LiveWellSD.org.



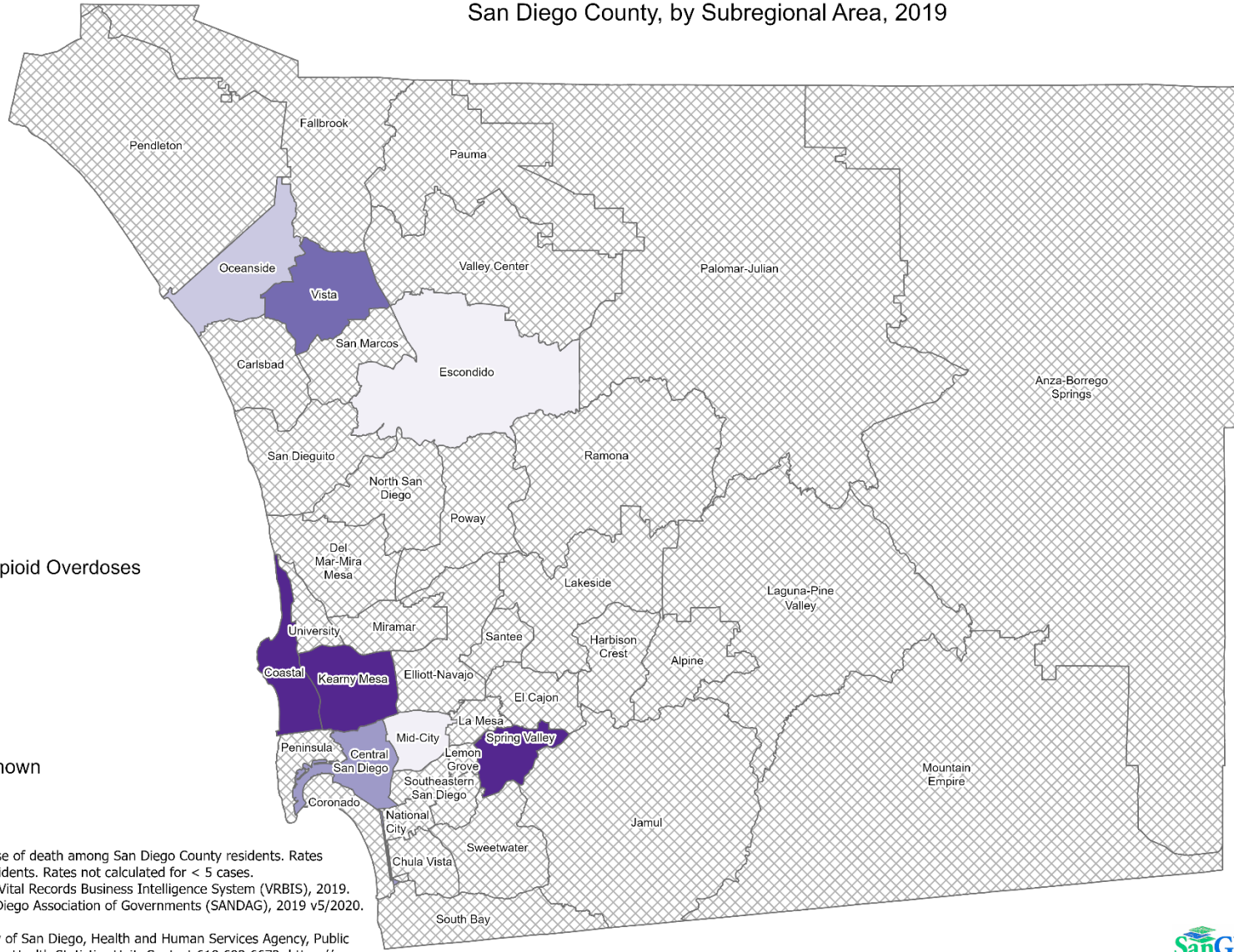
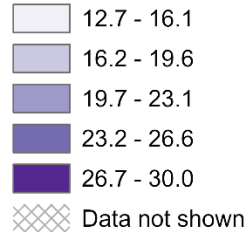




## Death Rates Among Residents, Ages 45-64\* San Diego County, by Subregional Area, 2019



### Any Mention of Opioid Overdoses



\*Multiple/contributing cause of death among San Diego County residents. Rates calculated per 100,000 residents. Rates not calculated for < 5 cases.  
Sources: Death data from Vital Records Business Intelligence System (VRBIS), 2019. Population estimates San Diego Association of Governments (SANDAG), 2019 v5/2020.

Maps & Analysis by County of San Diego, Health and Human Services Agency, Public Health Services, Community Health Statistics Unit. Contact 619.692.6672. [https://www.sandiegocounty.gov/hhsa/programs/phs/community\\_health\\_statistics/](https://www.sandiegocounty.gov/hhsa/programs/phs/community_health_statistics/). December, 2021.  
LiveWellSD.org.



# Section 2

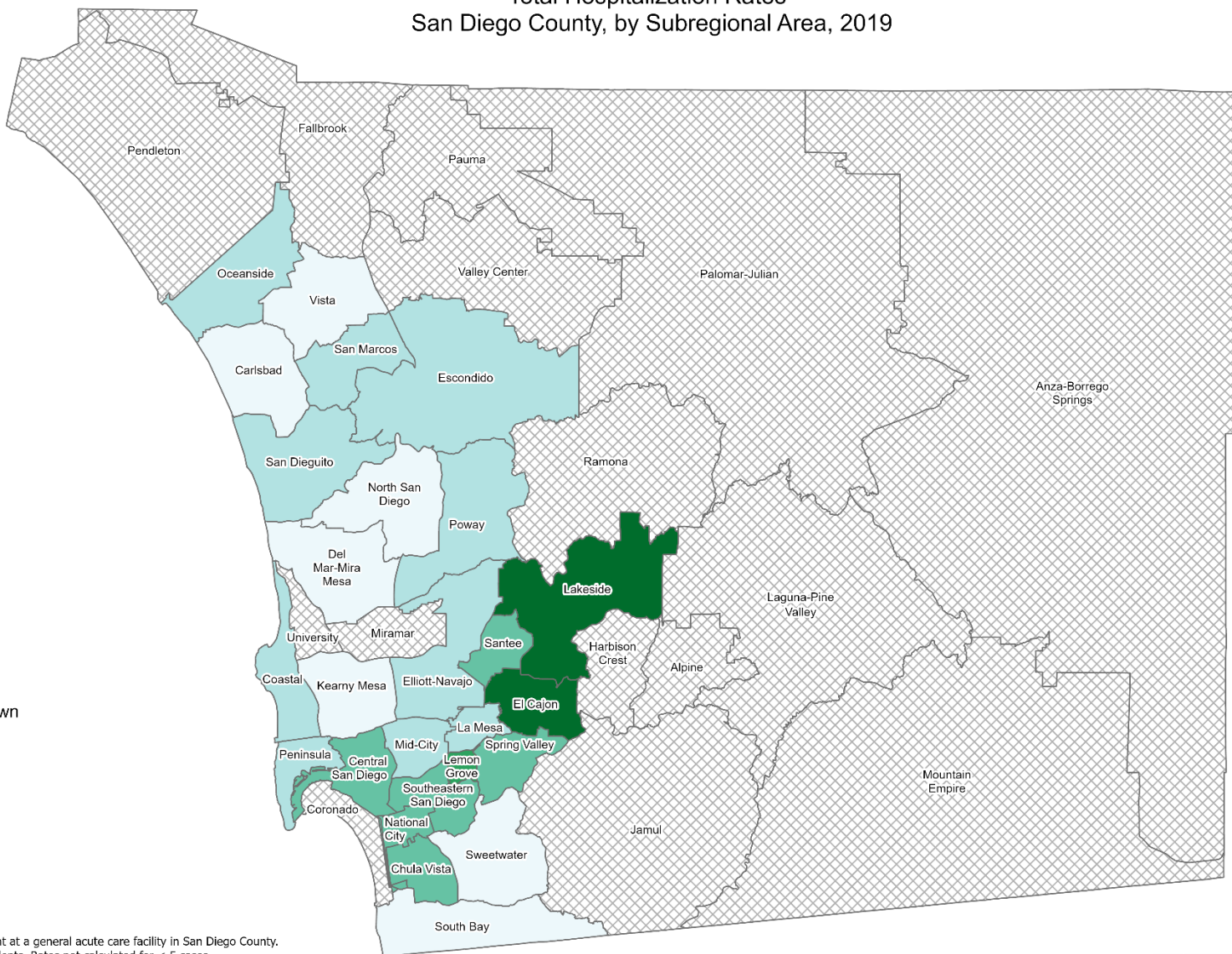
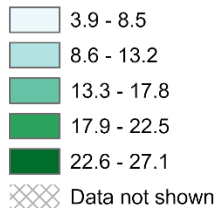
## **Hospitalization Rates Among San Diego County Residents by Demographics, 2019:**

- Total Rate
- Race/Ethnicity
  - Asian/Pacific Islander (API)
  - Black
  - Hispanic
  - White
- Age
  - 0-14
  - 15-24
  - 25-44
  - 45-64
  - 65+

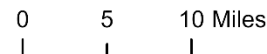
## Total Hospitalization Rates\* San Diego County, by Subregional Area, 2019



### Opioid Overdoses



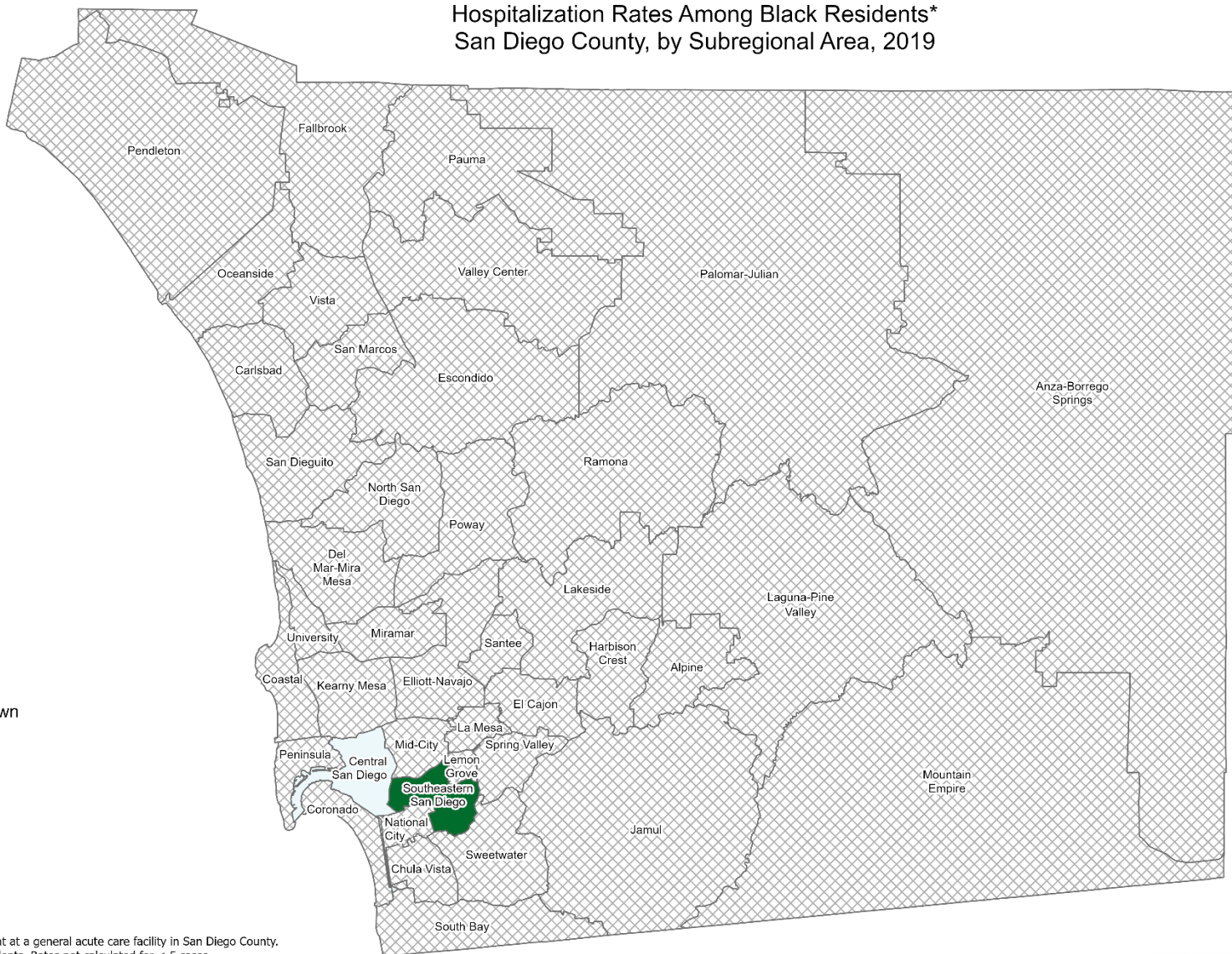
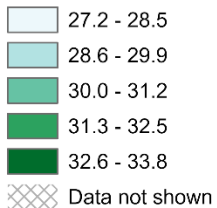
\*Hospitalization refers to treatment at a general acute care facility in San Diego County. Rates calculated per 100,000 residents. Rates not calculated for < 5 cases.  
Sources: California Office of Statewide Health Planning and Development (OSHPD), 2019 Patient Discharge Database.  
Population estimates San Diego Association of Governments (SANDAG), 2019 v5/2020.



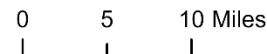
### Hospitalization Rates Among Black Residents\* San Diego County, by Subregional Area, 2019



**Opioid Overdoses**



\*Hospitalization refers to treatment at a general acute care facility in San Diego County. Rates calculated per 100,000 residents. Rates not calculated for < 5 cases.  
Sources: California Office of Statewide Health Planning and Development (OSHPD), 2019 Patient Discharge Database.  
Population estimates San Diego Association of Governments (SANDAG), 2019 v5/2020.

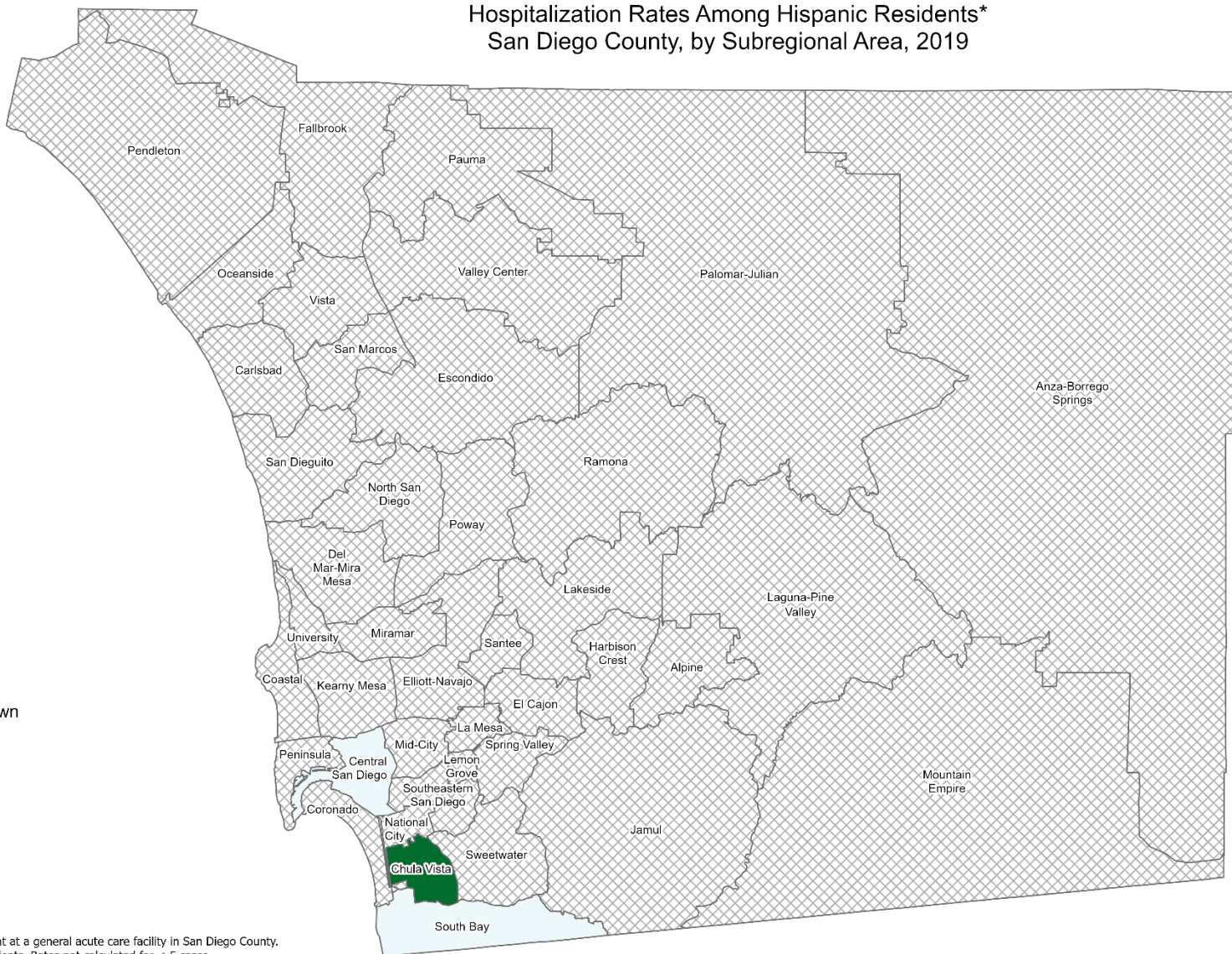
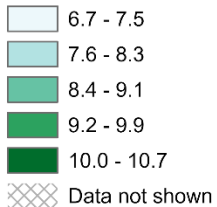




### Hospitalization Rates Among Hispanic Residents\* San Diego County, by Subregional Area, 2019

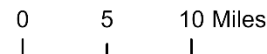


**Opioid Overdoses**



\*Hospitalization refers to treatment at a general acute care facility in San Diego County. Rates calculated per 100,000 residents. Rates not calculated for < 5 cases.  
Sources: California Office of Statewide Health Planning and Development (OSHPD), 2019 Patient Discharge Database.  
Population estimates San Diego Association of Governments (SANDAG), 2019 v5/2020.

Maps & Analysis by County of San Diego, Health and Human Services Agency, Public Health Services, Community Health Statistics Unit. Contact 619.692.6672. [https://www.sandiegocounty.gov/hhsa/programs/phs/community\\_health\\_statistics/](https://www.sandiegocounty.gov/hhsa/programs/phs/community_health_statistics/). December 2021.  
LiveWellSD.org.

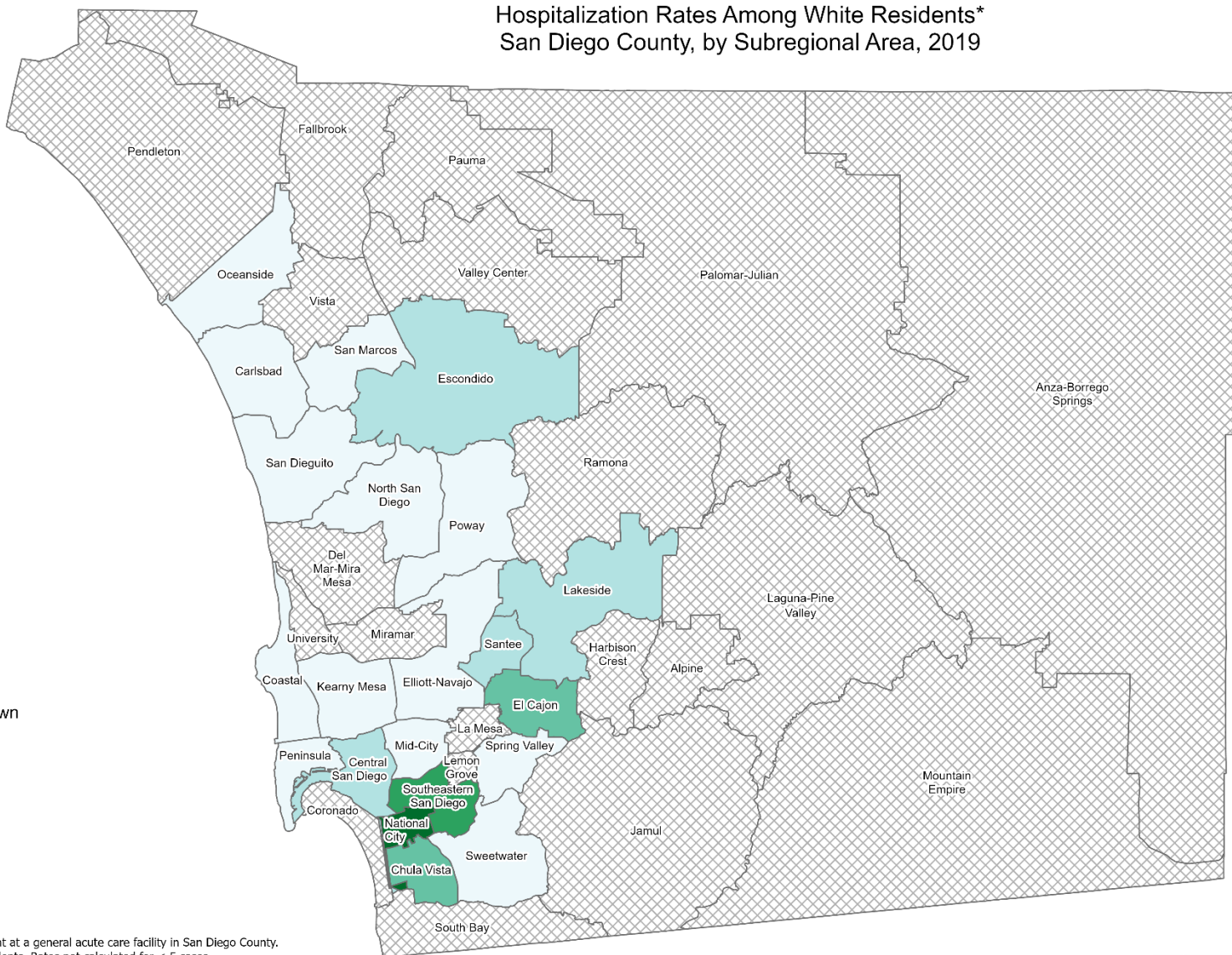
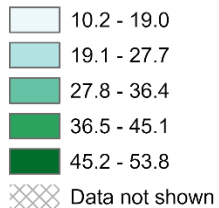




### Hospitalization Rates Among White Residents\* San Diego County, by Subregional Area, 2019

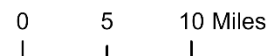


**Opioid Overdoses**



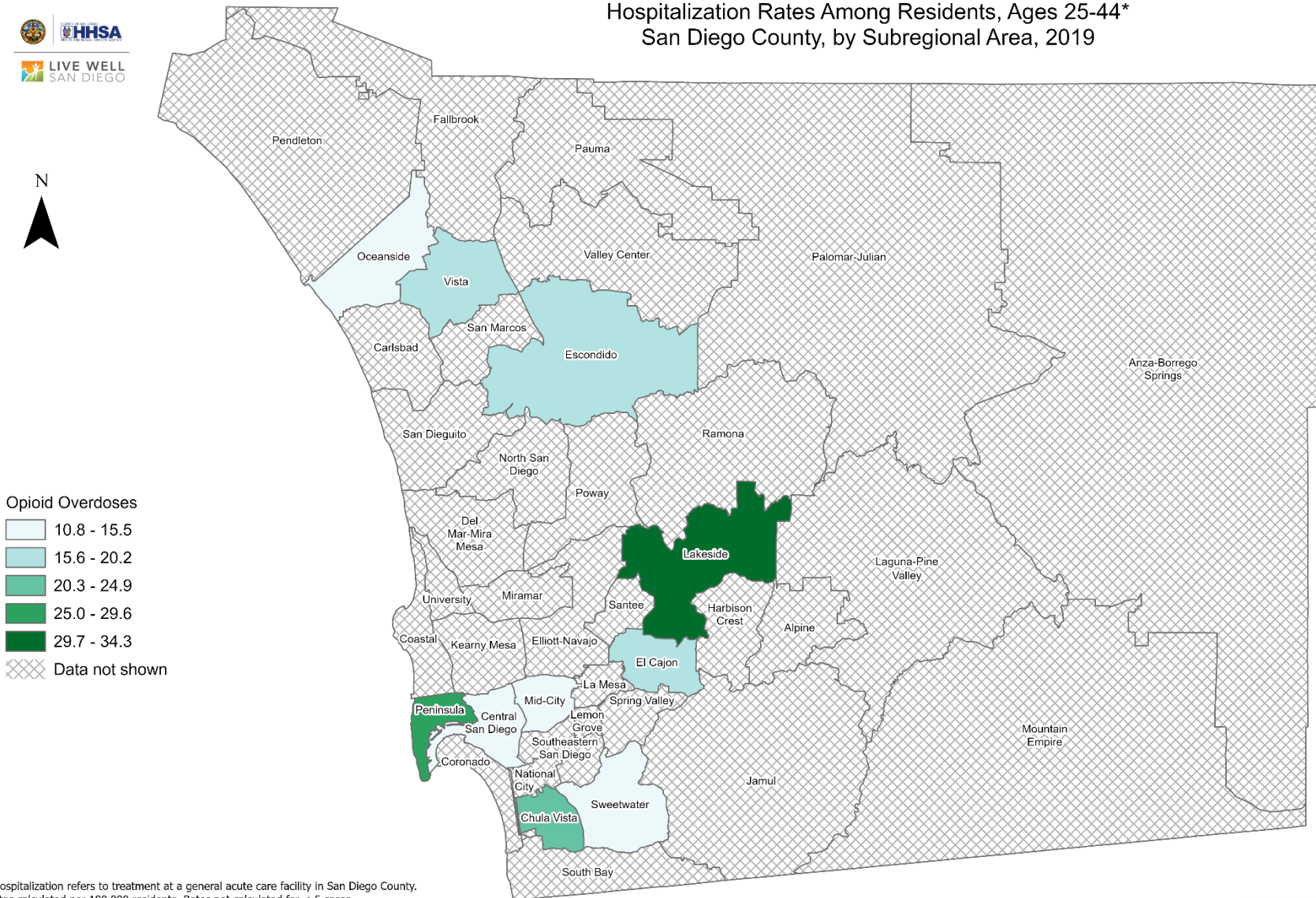
\*Hospitalization refers to treatment at a general acute care facility in San Diego County. Rates calculated per 100,000 residents. Rates not calculated for < 5 cases.  
Sources: California Office of Statewide Health Planning and Development (OSHPD), 2019 Patient Discharge Database.  
Population estimates San Diego Association of Governments (SANDAG), 2019 v5/2020.

Maps & Analysis by County of San Diego, Health and Human Services Agency, Public Health Services, Community Health Statistics Unit. Contact 619.692.6672. [https://www.sandiegocounty.gov/hhsa/programs/phs/community\\_health\\_statistics/](https://www.sandiegocounty.gov/hhsa/programs/phs/community_health_statistics/). December 2021.  
LiveWellSD.org.



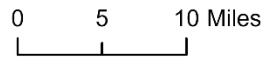


## Hospitalization Rates Among Residents, Ages 25-44\* San Diego County, by Subregional Area, 2019



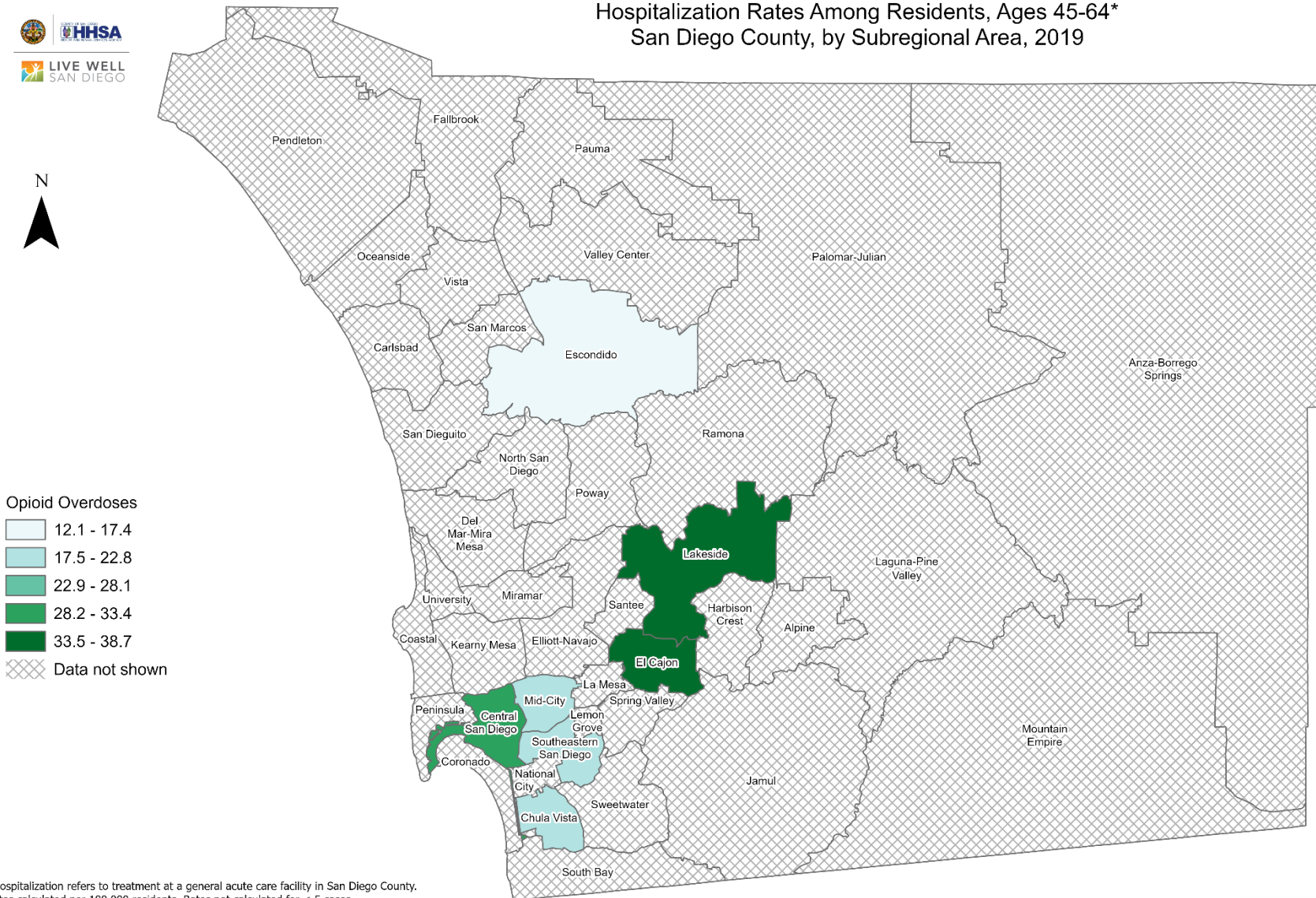
\*Hospitalization refers to treatment at a general acute care facility in San Diego County. Rates calculated per 100,000 residents. Rates not calculated for < 5 cases.  
Sources: California Office of Statewide Health Planning and Development (OSHPD), 2019 Patient Discharge Database.  
Population estimates San Diego Association of Governments (SANDAG), 2019 v5/2020.

Maps & Analysis by County of San Diego, Health and Human Services Agency, Public Health Services, Community Health Statistics Unit. Contact 619.692.6672. [https://www.sandiegocounty.gov/hhsa/programs/phs/community\\_health\\_statistics/](https://www.sandiegocounty.gov/hhsa/programs/phs/community_health_statistics/). December 2021.  
LiveWellSD.org.



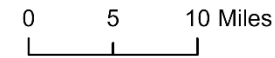


## Hospitalization Rates Among Residents, Ages 45-64\* San Diego County, by Subregional Area, 2019



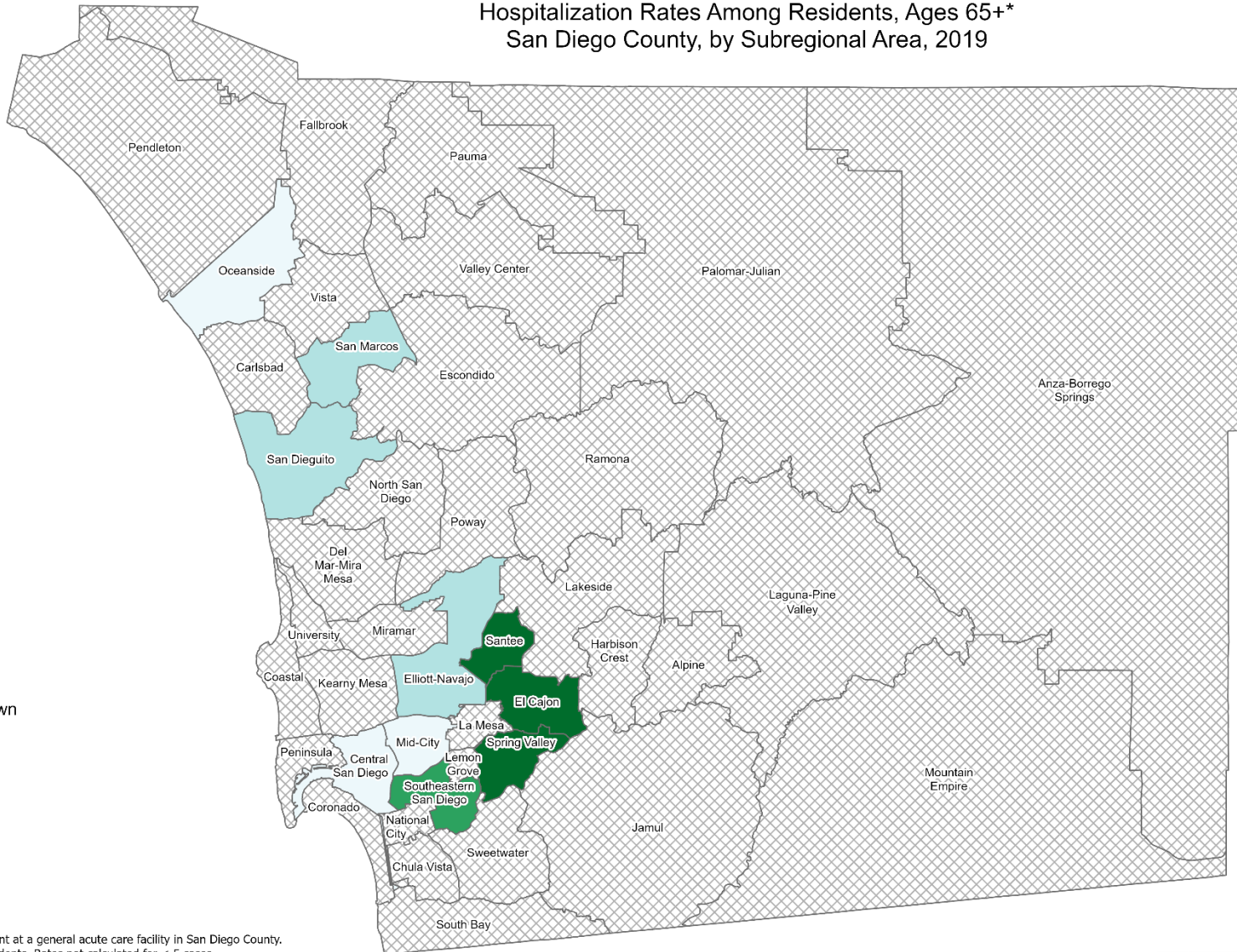
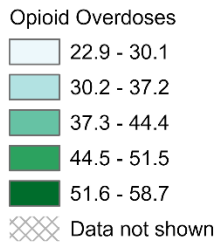
\*Hospitalization refers to treatment at a general acute care facility in San Diego County. Rates calculated per 100,000 residents. Rates not calculated for < 5 cases.  
Sources: California Office of Statewide Health Planning and Development (OSHPD), 2019 Patient Discharge Database.  
Population estimates San Diego Association of Governments (SANDAG), 2019 v5/2020.

Maps & Analysis by County of San Diego, Health and Human Services Agency, Public Health Services, Community Health Statistics Unit. Contact 619.692.6672. [https://www.sandiegocounty.gov/hhsa/programs/phs/community\\_health\\_statistics/](https://www.sandiegocounty.gov/hhsa/programs/phs/community_health_statistics/). December 2021.  
LiveWellSD.org.

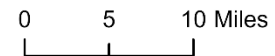




### Hospitalization Rates Among Residents, Ages 65+\* San Diego County, by Subregional Area, 2019



\*Hospitalization refers to treatment at a general acute care facility in San Diego County. Rates calculated per 100,000 residents. Rates not calculated for < 5 cases.  
Sources: California Office of Statewide Health Planning and Development (OSHPD), 2019 Patient Discharge Database.  
Population estimates San Diego Association of Governments (SANDAG), 2019 v5/2020.



# Section 3

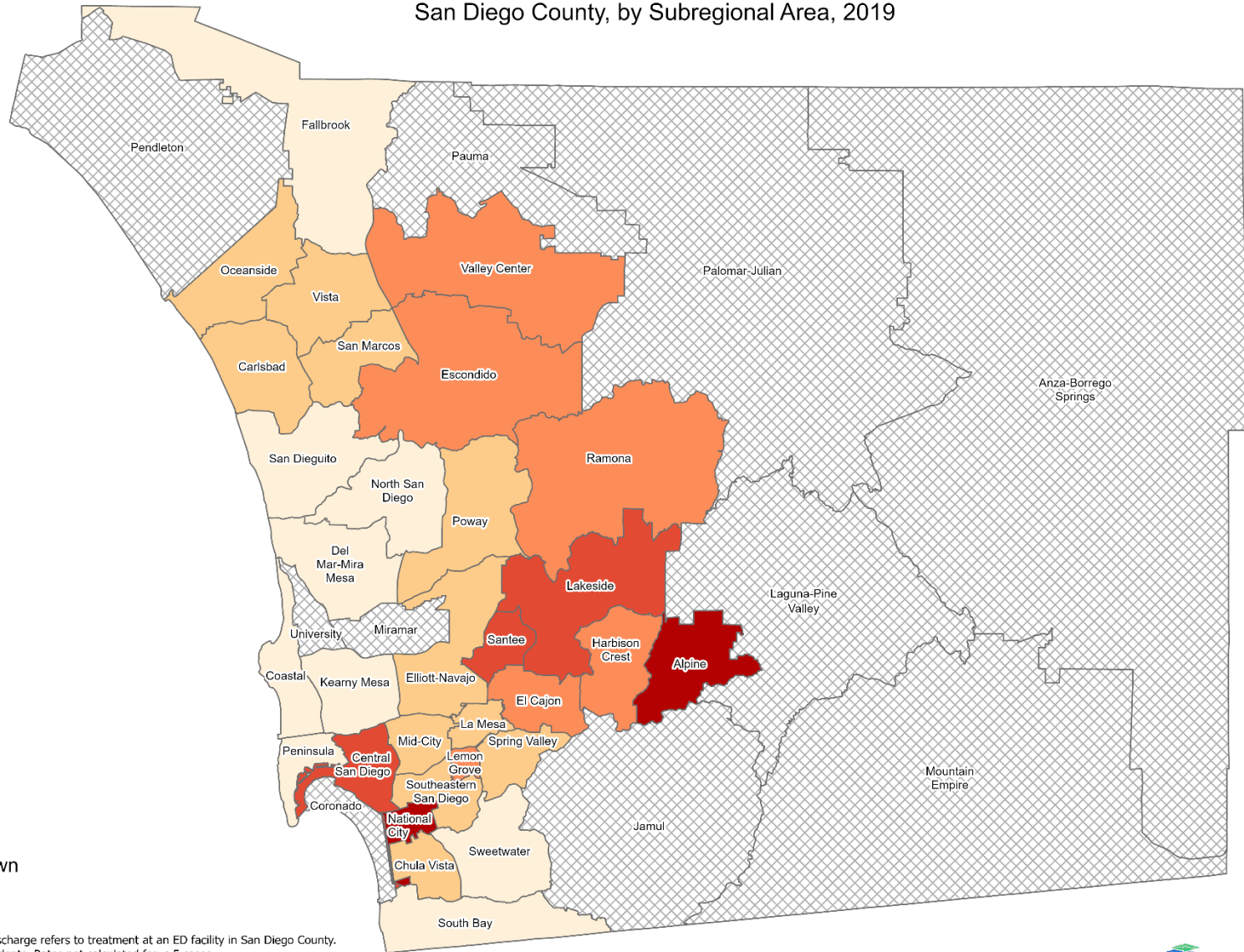
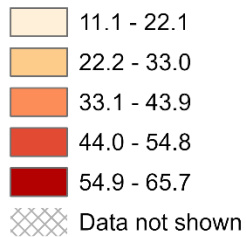
## **Emergency Department (ED) Discharge Rates Among San Diego County Residents by Demographics, 2019:**

- Total Rate
- Race/Ethnicity
  - Asian/Pacific Islander (API)
  - Black
  - Hispanic
  - White
- Age
  - 0-14
  - 15-24
  - 25-44
  - 45-64
  - 65+

## Total Emergency Department Discharge Rates\* San Diego County, by Subregional Area, 2019



### Opioid Overdoses

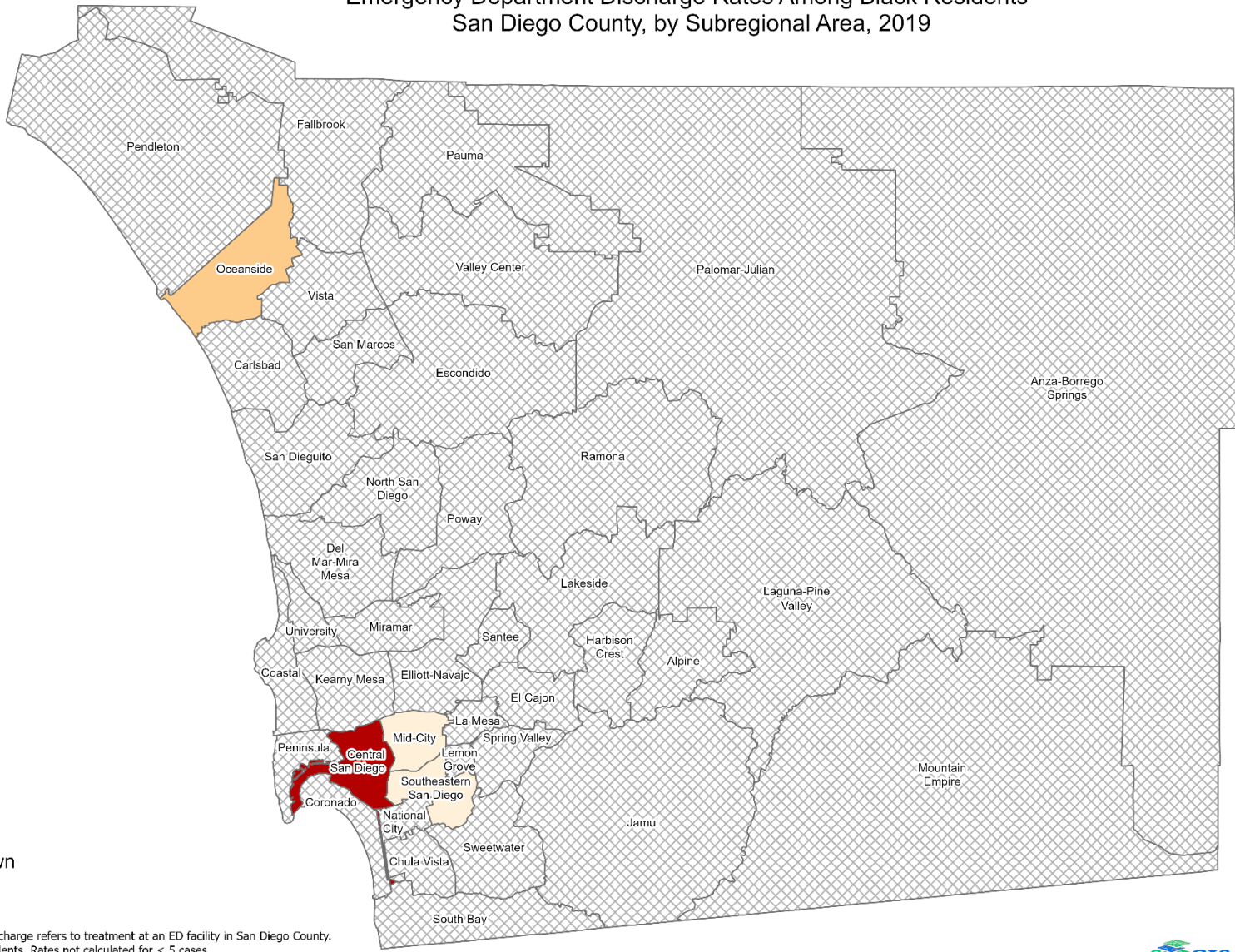
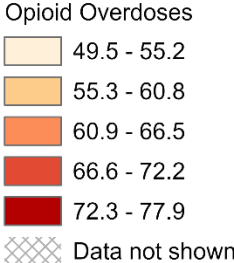


\*Emergency Department (ED) Discharge refers to treatment at an ED facility in San Diego County. Rates calculated per 100,000 residents. Rates not calculated for < 5 cases.  
Sources: California Office of Statewide Health Planning and Development (OSHPD), 2019 Emergency Department Discharge database. Population estimates San Diego Association of Governments (SANDAG), 2019 v5/2020.

Maps & Analysis by County of San Diego, Health and Human Services Agency, Public Health Services, Community Health Statistics Unit. Contact 619.692.6672. [https://www.sandiegocounty.gov/hhsa/programs/phs/community\\_health\\_statistics/](https://www.sandiegocounty.gov/hhsa/programs/phs/community_health_statistics/). December, 2021. LiveWellSD.org.



## Emergency Department Discharge Rates Among Black Residents\* San Diego County, by Subregional Area, 2019



\*Emergency Department (ED) Discharge refers to treatment at an ED facility in San Diego County. Rates calculated per 100,000 residents. Rates not calculated for < 5 cases. Sources: California Office of Statewide Health Planning and Development (OSHPD), 2019 Emergency Department Discharge database. Population estimates San Diego Association of Governments (SANDAG), 2019 v5/2020.

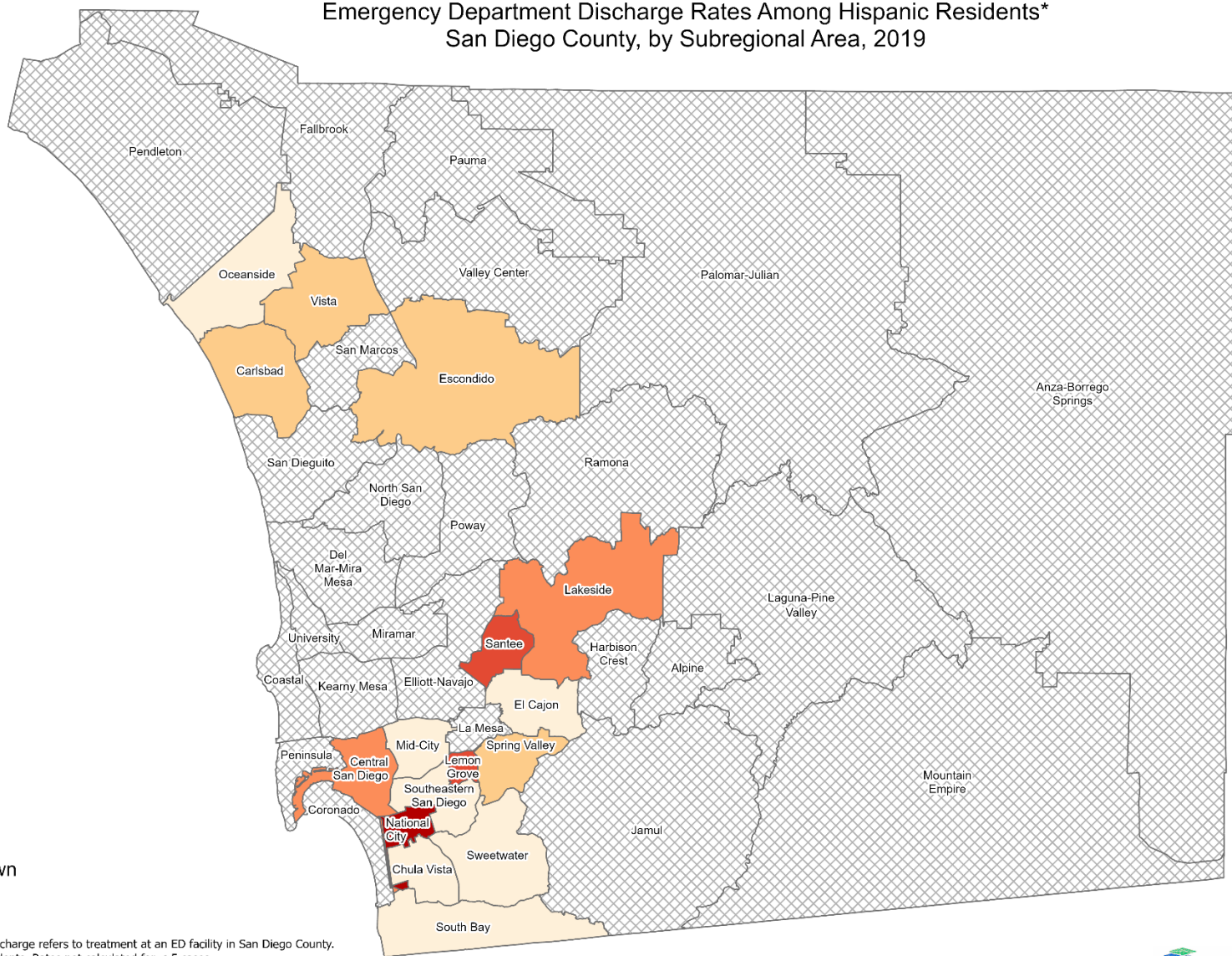
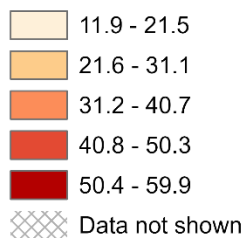
Maps & Analysis by County of San Diego, Health and Human Services Agency, Public Health Services, Community Health Statistics Unit. Contact 619.692.6672. [https://www.sandiegocounty.gov/hhsa/programs/phs/community\\_health\\_statistics/](https://www.sandiegocounty.gov/hhsa/programs/phs/community_health_statistics/). December, 2021. LiveWellSD.org.



### Emergency Department Discharge Rates Among Hispanic Residents\* San Diego County, by Subregional Area, 2019

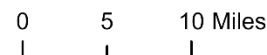


#### Opioid Overdoses



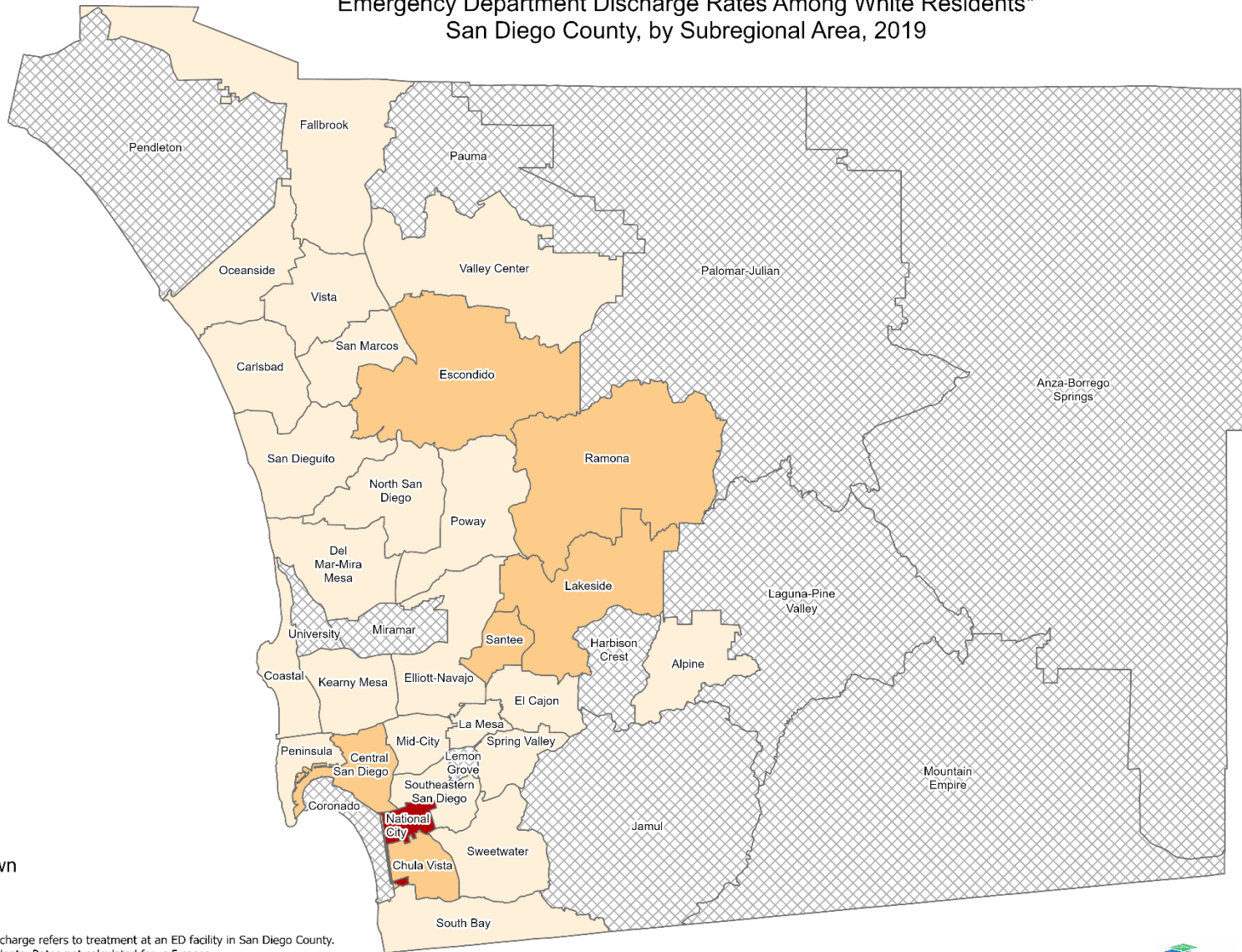
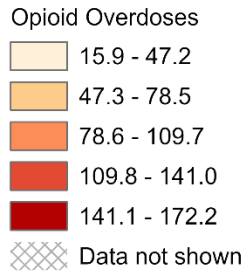
\*Emergency Department (ED) Discharge refers to treatment at an ED facility in San Diego County. Rates calculated per 100,000 residents. Rates not calculated for < 5 cases.  
Sources: California Office of Statewide Health Planning and Development (OSHPD), 2019 Emergency Department Discharge database. Population estimates San Diego Association of Governments (SANDAG), 2019 v5/2020.

Maps & Analysis by County of San Diego, Health and Human Services Agency, Public Health Services, Community Health Statistics Unit. Contact 619.692.6672. [https://www.sandiegocounty.gov/hhsa/programs/phs/community\\_health\\_statistics/](https://www.sandiegocounty.gov/hhsa/programs/phs/community_health_statistics/). December, 2021. LiveWellSD.org.



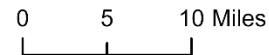


### Emergency Department Discharge Rates Among White Residents\* San Diego County, by Subregional Area, 2019



\*Emergency Department (ED) Discharge refers to treatment at an ED facility in San Diego County. Rates calculated per 100,000 residents. Rates not calculated for < 5 cases.  
Sources: California Office of Statewide Health Planning and Development (OSHPD), 2019 Emergency Department Discharge database. Population estimates San Diego Association of Governments (SANDAG), 2019 v5/2020.

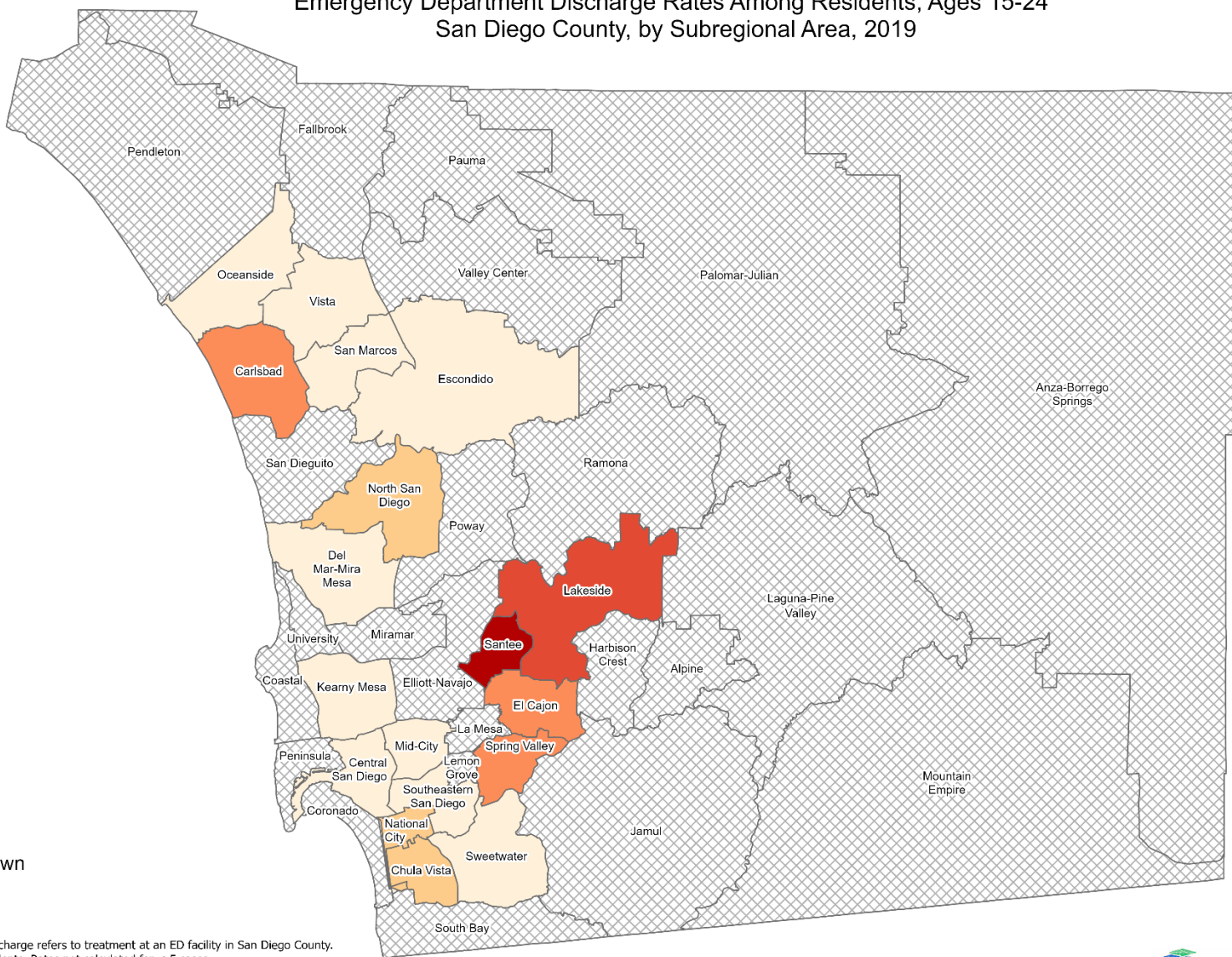
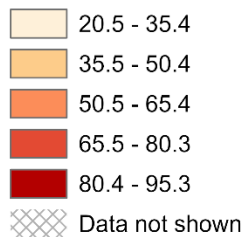
Maps & Analysis by County of San Diego, Health and Human Services Agency, Public Health Services, Community Health Statistics Unit. Contact 619.692.6672. [https://www.sandiegocounty.gov/hhsa/programs/phs/community\\_health\\_statistics/](https://www.sandiegocounty.gov/hhsa/programs/phs/community_health_statistics/). December, 2021. LiveWellSD.org.



## Emergency Department Discharge Rates Among Residents, Ages 15-24\* San Diego County, by Subregional Area, 2019

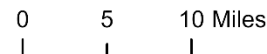


### Opioid Overdoses



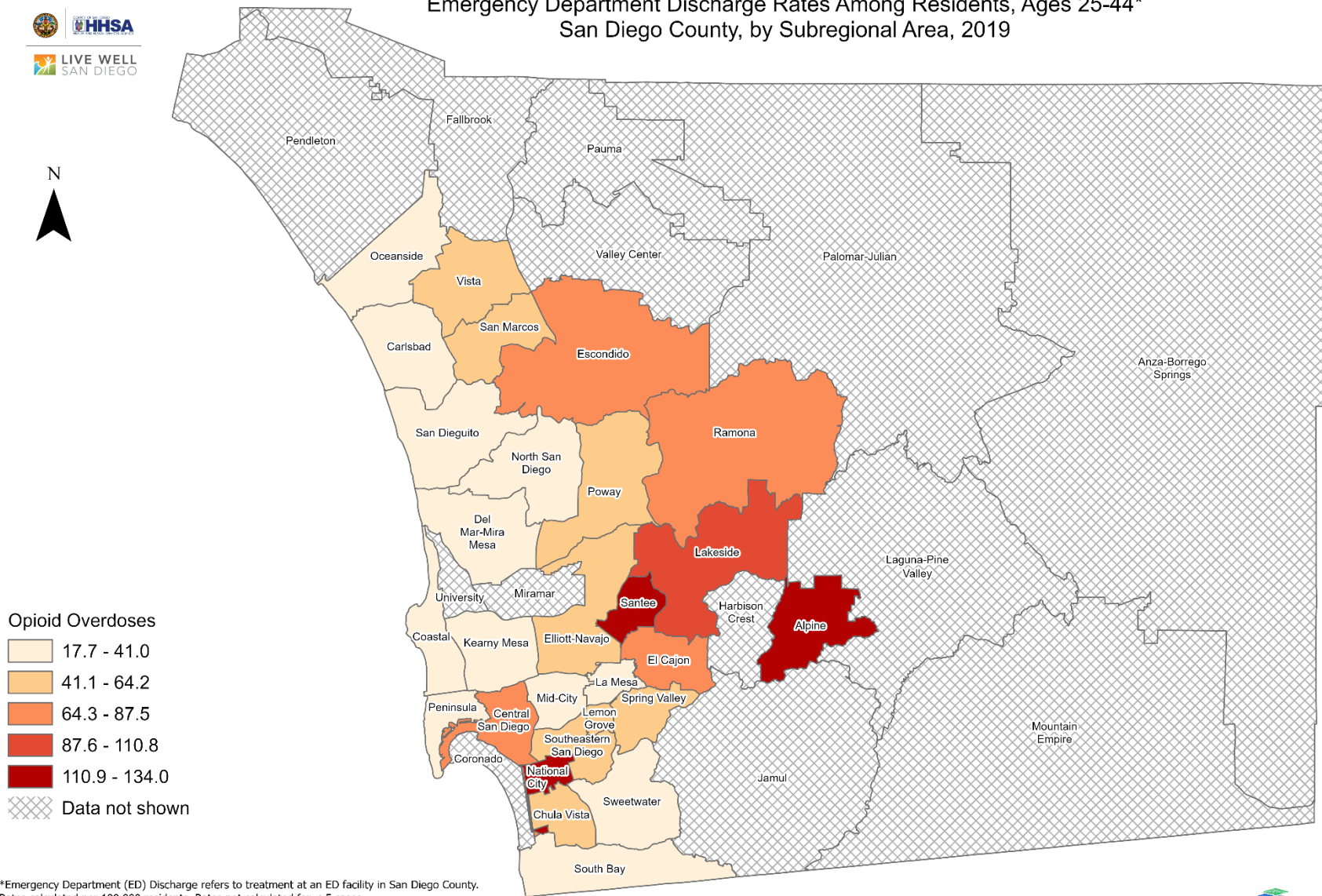
\*Emergency Department (ED) Discharge refers to treatment at an ED facility in San Diego County. Rates calculated per 100,000 residents. Rates not calculated for < 5 cases.  
Sources: California Office of Statewide Health Planning and Development (OSHPD), 2019 Emergency Department Discharge database. Population estimates San Diego Association of Governments (SANDAG), 2019 v5/2020.

Maps & Analysis by County of San Diego, Health and Human Services Agency, Public Health Services, Community Health Statistics Unit. Contact 619.692.6672. [https://www.sandiegocounty.gov/hhsa/programs/phs/community\\_health\\_statistics/](https://www.sandiegocounty.gov/hhsa/programs/phs/community_health_statistics/). December, 2021. LiveWellSD.org.



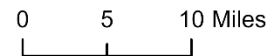


## Emergency Department Discharge Rates Among Residents, Ages 25-44\* San Diego County, by Subregional Area, 2019



\*Emergency Department (ED) Discharge refers to treatment at an ED facility in San Diego County. Rates calculated per 100,000 residents. Rates not calculated for < 5 cases.  
Sources: California Office of Statewide Health Planning and Development (OSHPD), 2019 Emergency Department Discharge database. Population estimates San Diego Association of Governments (SANDAG), 2019 v5/2020.

Maps & Analysis by County of San Diego, Health and Human Services Agency, Public Health Services, Community Health Statistics Unit. Contact 619.692.6672. [https://www.sandiegocounty.gov/hhsa/programs/phs/community\\_health\\_statistics/](https://www.sandiegocounty.gov/hhsa/programs/phs/community_health_statistics/). December, 2021. LiveWellSD.org.

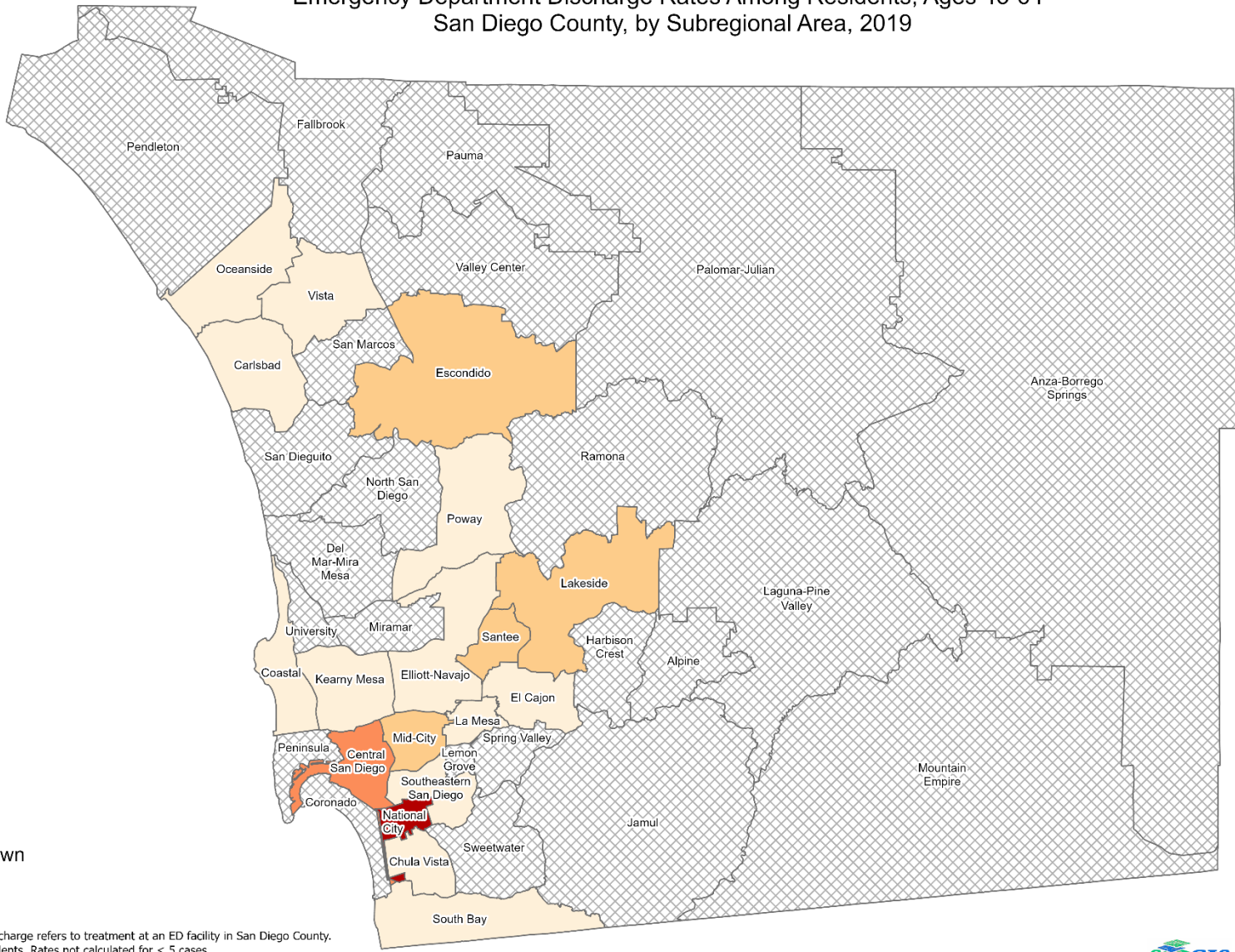
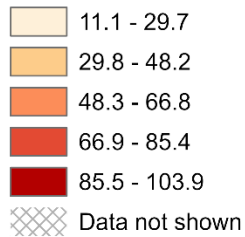




# Emergency Department Discharge Rates Among Residents, Ages 45-64\* San Diego County, by Subregional Area, 2019



**Opioid Overdoses**



\*Emergency Department (ED) Discharge refers to treatment at an ED facility in San Diego County. Rates calculated per 100,000 residents. Rates not calculated for < 5 cases. Sources: California Office of Statewide Health Planning and Development (OSHPD), 2019 Emergency Department Discharge database. Population estimates San Diego Association of Governments (SANDAG), 2019 v5/2020.

Maps & Analysis by County of San Diego, Health and Human Services Agency, Public Health Services, Community Health Statistics Unit. Contact 619.692.6672. [https://www.sandiegocounty.gov/hhsa/programs/phs/community\\_health\\_statistics/](https://www.sandiegocounty.gov/hhsa/programs/phs/community_health_statistics/). December, 2021. LiveWellSD.org.

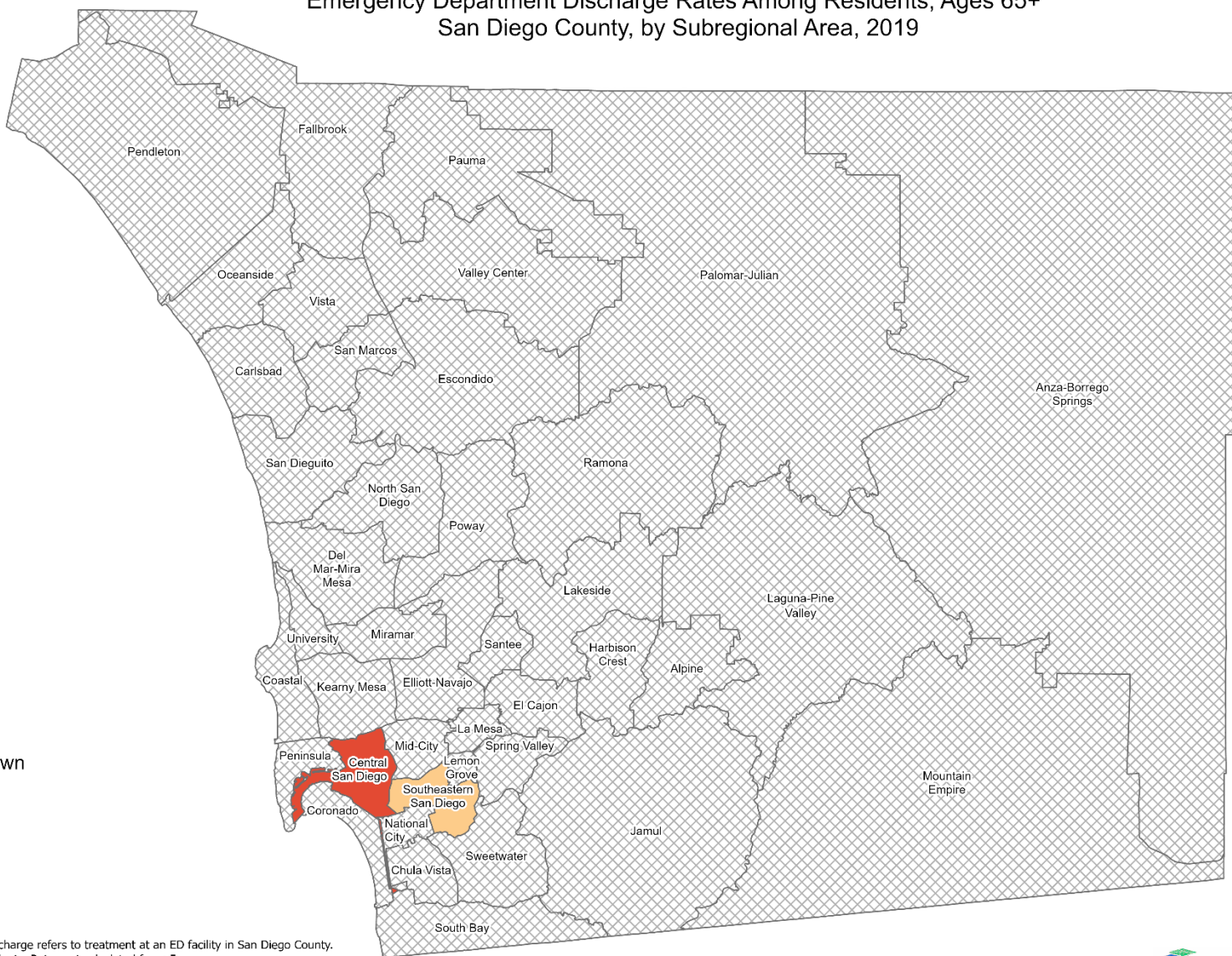


## Emergency Department Discharge Rates Among Residents, Ages 65+\* San Diego County, by Subregional Area, 2019



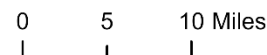
### Opioid Overdoses

- 28.2 - 33.4
- 33.5 - 38.6
- Data not shown



\*Emergency Department (ED) Discharge refers to treatment at an ED facility in San Diego County. Rates calculated per 100,000 residents. Rates not calculated for < 5 cases.  
Sources: California Office of Statewide Health Planning and Development (OSHPD), 2019 Emergency Department Discharge database. Population estimates San Diego Association of Governments (SANDAG), 2019 v5/2020.

Maps & Analysis by County of San Diego, Health and Human Services Agency, Public Health Services, Community Health Statistics Unit. Contact 619.692.6672. [https://www.sandiegocounty.gov/hhsa/programs/phs/community\\_health\\_statistics/](https://www.sandiegocounty.gov/hhsa/programs/phs/community_health_statistics/). December, 2021. LiveWellSD.org.



# Section 4

## **In-Patient Treatment (IPT) Rates Among San Diego County Residents by Demographics, 2019:**

- Total Rate
- Race/Ethnicity
  - Asian/Pacific Islander (API)
  - Black
  - Hispanic
  - White
- Age
  - 0-14
  - 15-24
  - 25-44
  - 45-64
  - 65+

**No SRA-level rate data available for this section**