



MAP ATLAS

Trauma and Stressor Related Disorders San Diego County, 2019



County of San Diego | Health and Human Services Agency |
Public Health Services | Community Health Statistics Unit

Prepared March 2022

Data Sources - San Diego County, 2019

Death* is based on underlying cause of death among San Diego County residents. Rates calculated per 100,000 residents. Rates not calculated for < 5 cases. Maps not produced for conditions/outcomes with no SRA-level rates. Some sections may have no maps.

Sources: Death data from Vital Records Business Intelligence System (VRBIS), 2019.

Population estimates from San Diego Association of Governments (SANDAG), 2019 v5/2020.

*For substance/drug overdoses, death rate is based on the multiple/contributing cause of death among San Diego County residents.

Hospitalization refers to treatment at a general acute care facility in San Diego County. Rates calculated per 100,000 residents. Rates not calculated for < 5 cases. Maps not produced for conditions/outcomes with no SRA-level rates. Some sections may have no maps.

Sources: California Office of Statewide Health Planning and Development (OSHPD), 2019 Patient Discharge Database.

Population estimates from San Diego Association of Governments (SANDAG), 2019 v5/2020.

Emergency Department (ED) Discharge refers to treatment at an ED facility in San Diego County.

Rates calculated per 100,000 residents. Rates not calculated for < 5 cases. Maps not produced for conditions/outcomes with no SRA-level rates. Some sections may have no maps.

Sources: California Office of Statewide Health Planning and Development (OSHPD), 2019 Emergency Department Discharge database.

Population estimates from San Diego Association of Governments (SANDAG), 2019 v5/2020.

In-Patient Treatment (IPT) refers to treatment at a psychiatric care or chemical rehabilitation facility in San Diego County. Rates calculated per 100,000 residents. Rates not calculated for < 5 cases. Maps not produced for conditions/outcomes with no SRA-level rates. Some sections may have no maps.

Sources: California Office of Statewide Health Planning and Development (OSHPD), 2019 Patient Discharge Database.

Population estimates from San Diego Association of Governments (SANDAG), 2019 v5/2020.

Maps & Analysis by County of San Diego, Health and Human Services Agency, Public Health Services, Community Health Statistics Unit. Contact 619.692.6672. January 2022.

https://www.sandiegocounty.gov/hhsa/programs/phs/community_health_statistics/

LiveWellSD.org.

Contact Information:

Community Health Statistics Unit

3851 Rosecrans Street

San Diego, CA 92110

619.692.6667

Isabel.Corcoc@sdcounty.ca.gov

(Epidemiologist II for CHSU)

Niki.Quach1@sdcounty.ca.gov

(Graduate Student Worker for CHSU)

Christopher.OMalley@sdcounty.ca.gov

(Senior Epidemiologist for CHSU)

For more detailed explanation of geography, methods, and sources, see online Community Profile at

<http://www.SDHealthStatistics.com/>

Contents

Section 1: Deaths	4
Section 2: Hospitalizations.....	6
Section 3: Emergency Department (ED) Discharges.....	10
Section 4: In-Patient Treatments (IPT).....	19

Section 1

Death Rates Among San Diego County Residents by Demographics, 2019:

- Total Rate
- Race/Ethnicity
 - Asian/Pacific Islander (API)
 - Black
 - Hispanic
 - White
- Age
 - 0-14
 - 15-24
 - 25-44
 - 45-64
 - 65+

No SRA-level rate data available for this section

Section 2

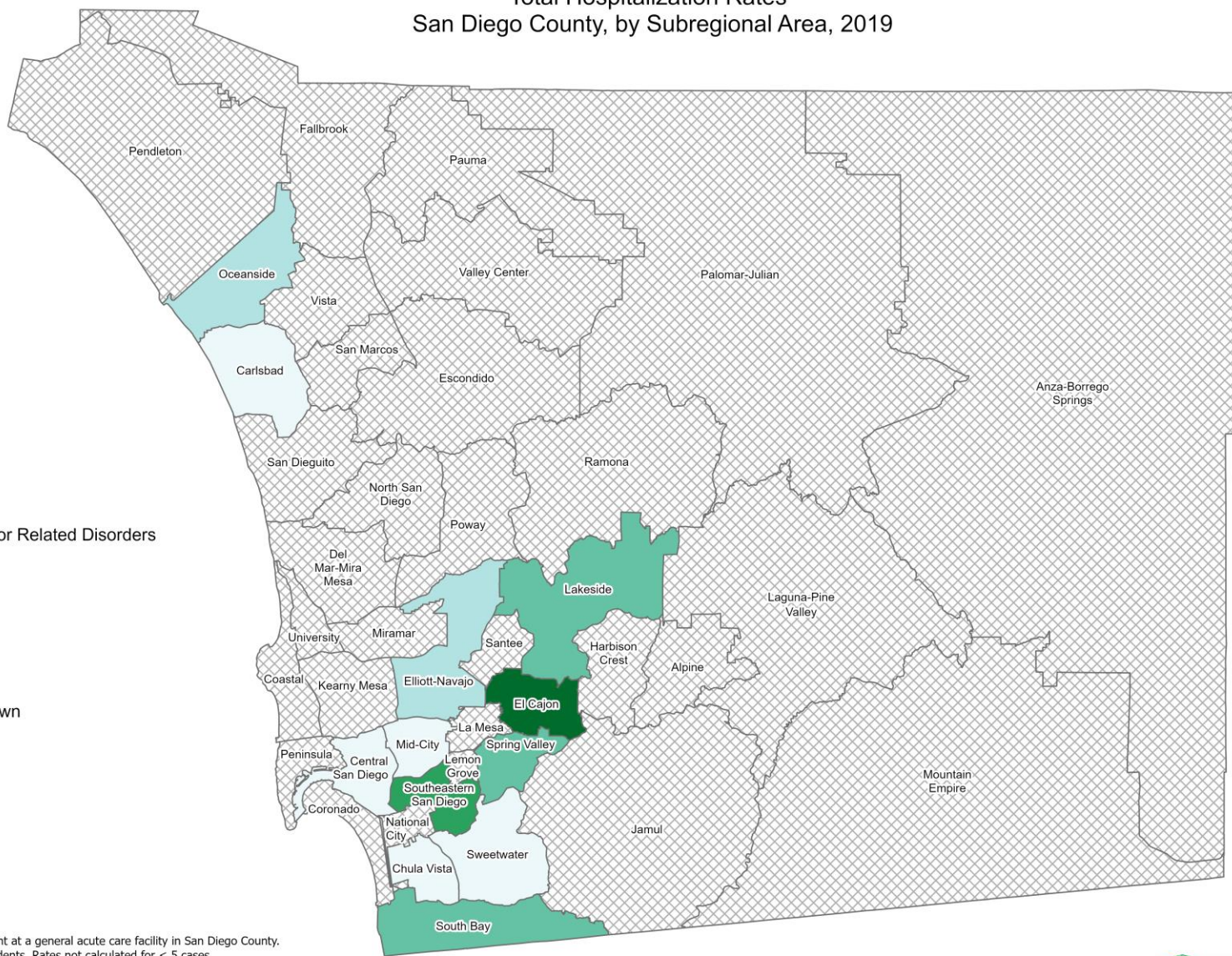
Hospitalization Rates Among San Diego County Residents by Demographics, 2019:

- Total Rate
- Race/Ethnicity
 - Asian/Pacific Islander (API)
 - Black
 - Hispanic
 - White
- Age
 - 0-14
 - 15-24
 - 25-44
 - 45-64
 - 65+

Total Hospitalization Rates* San Diego County, by Subregional Area, 2019



Trauma and Stressor Related Disorders



*Hospitalization refers to treatment at a general acute care facility in San Diego County. Rates calculated per 100,000 residents. Rates not calculated for < 5 cases.
Sources: California Office of Statewide Health Planning and Development (OSHPD), 2019 Patient Discharge Database.
Population estimates San Diego Association of Governments (SANDAG), 2019 v5/2020.

Maps & Analysis by County of San Diego, Health and Human Services Agency, Public Health Services, Community Health Statistics Unit. Contact 619.692.6672. https://www.sandiegocounty.gov/hhsa/programs/phs/community_health_statistics/. December 2021.
LiveWellSD.org.

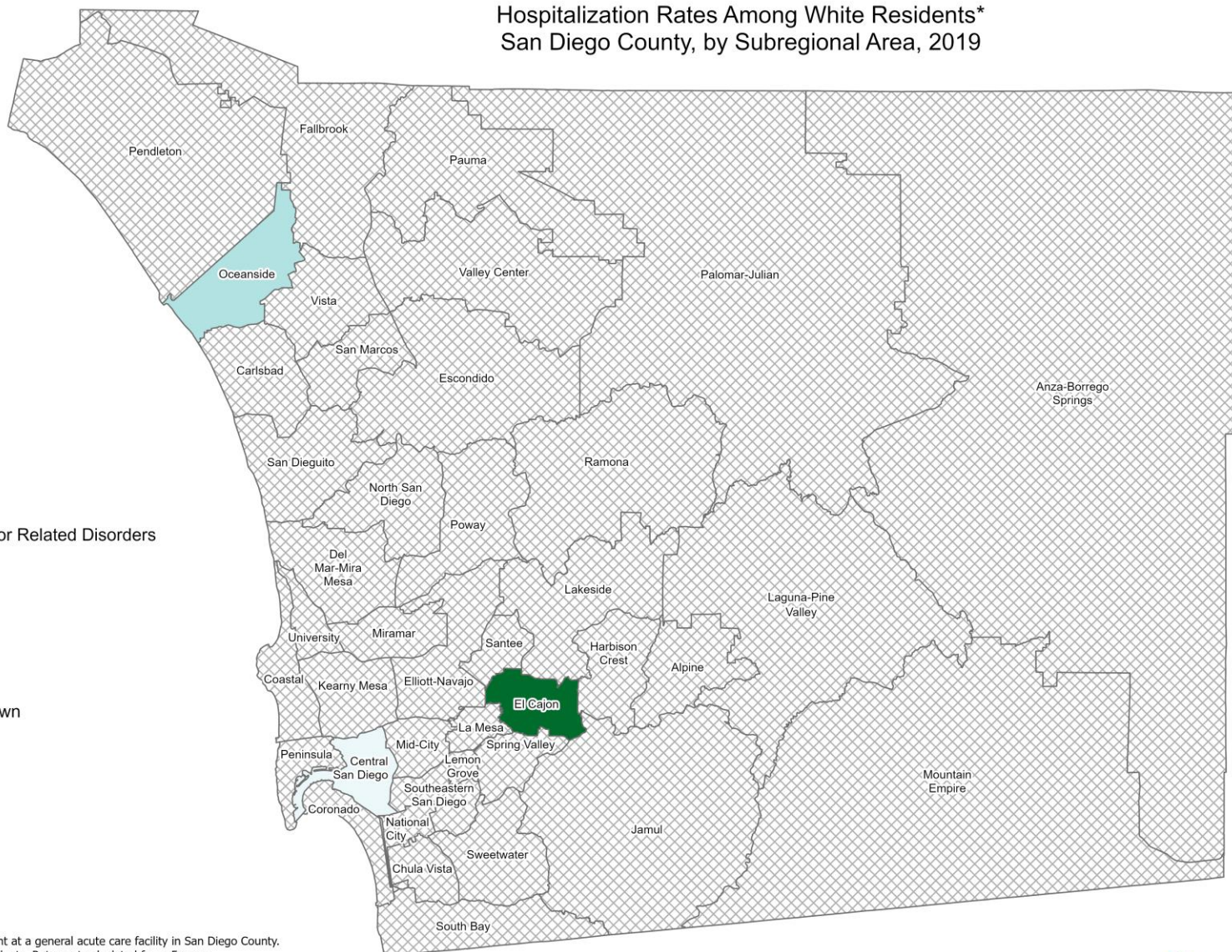
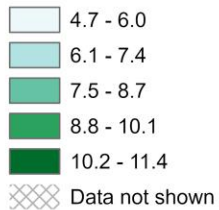




Hospitalization Rates Among White Residents* San Diego County, by Subregional Area, 2019



Trauma and Stressor Related Disorders



*Hospitalization refers to treatment at a general acute care facility in San Diego County. Rates calculated per 100,000 residents. Rates not calculated for < 5 cases.
Sources: California Office of Statewide Health Planning and Development (OSHPD), 2019 Patient Discharge Database.
Population estimates San Diego Association of Governments (SANDAG), 2019 v5/2020.

Maps & Analysis by County of San Diego, Health and Human Services Agency, Public Health Services, Community Health Statistics Unit. Contact 619.692.6672. https://www.sandiegocounty.gov/hhsa/programs/phs/community_health_statistics/. December 2021.
LiveWellSD.org.

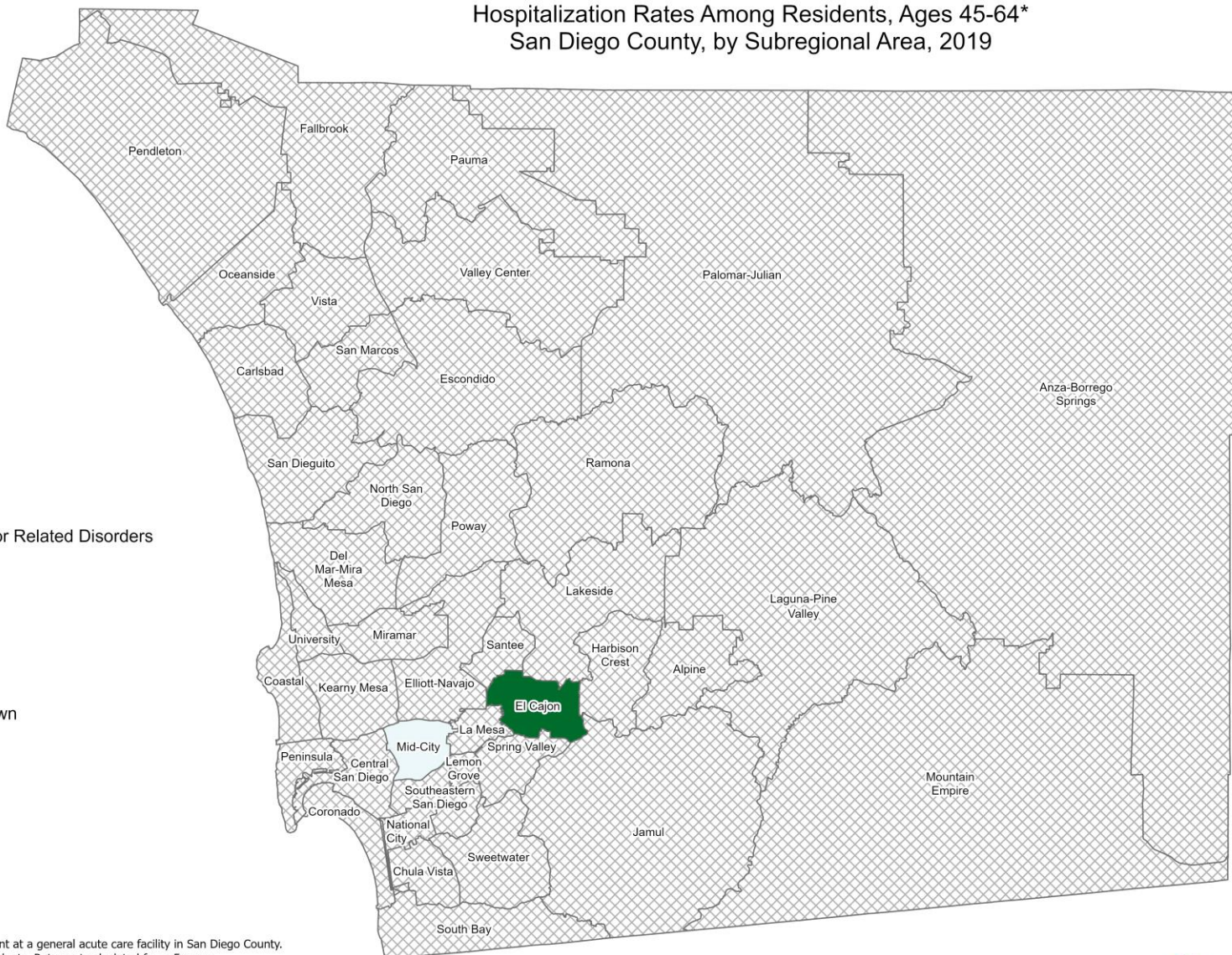
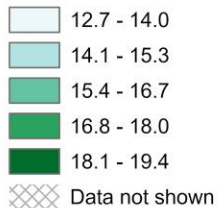




Hospitalization Rates Among Residents, Ages 45-64* San Diego County, by Subregional Area, 2019



Trauma and Stressor Related Disorders



*Hospitalization refers to treatment at a general acute care facility in San Diego County. Rates calculated per 100,000 residents. Rates not calculated for < 5 cases.
Sources: California Office of Statewide Health Planning and Development (OSHPD), 2019 Patient Discharge Database.
Population estimates San Diego Association of Governments (SANDAG), 2019 v5/2020.

Maps & Analysis by County of San Diego, Health and Human Services Agency, Public Health Services, Community Health Statistics Unit. Contact 619.692.6672. https://www.sandiegocounty.gov/hhsa/programs/phs/community_health_statistics/. December 2021.
LiveWellSD.org.

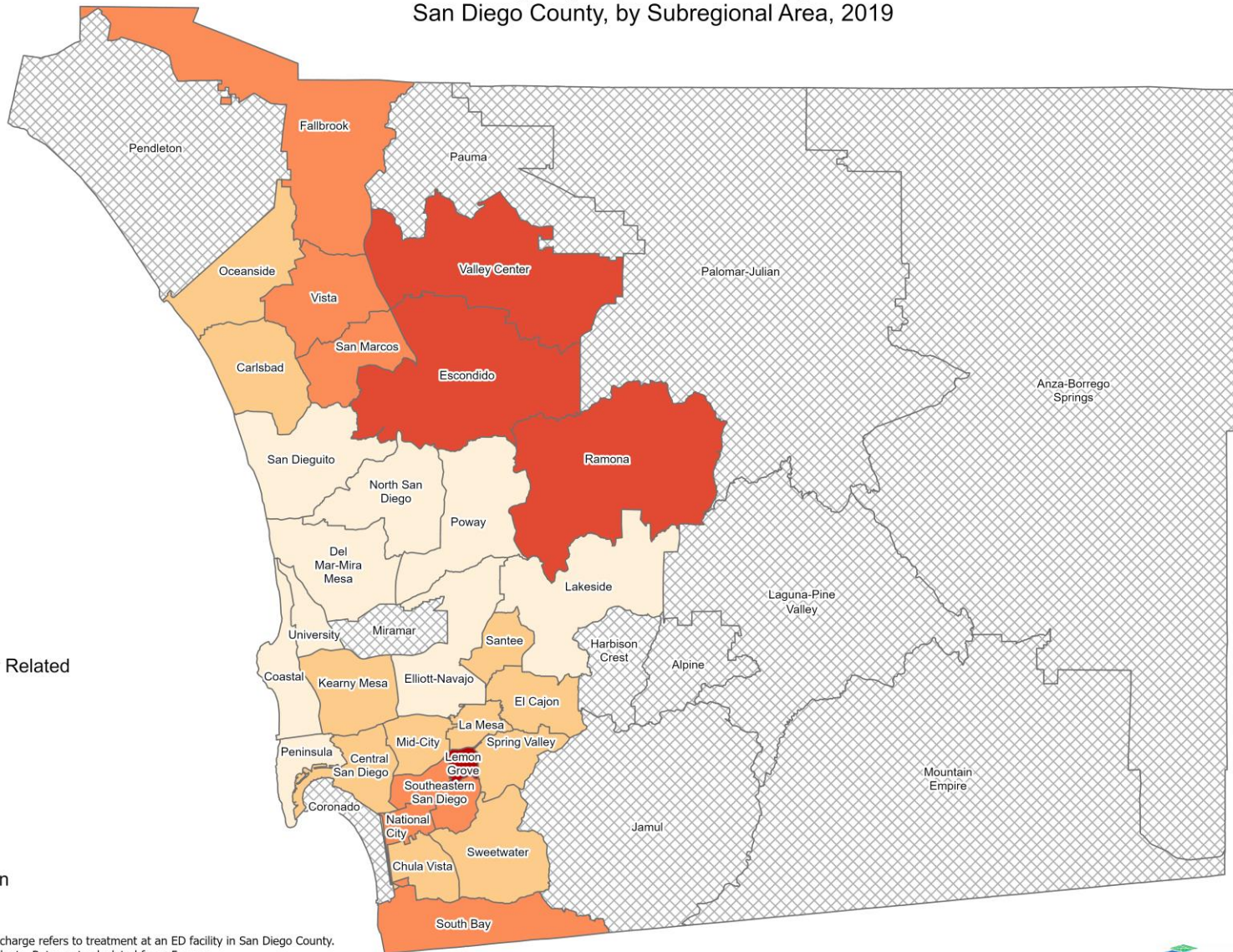


Section 3

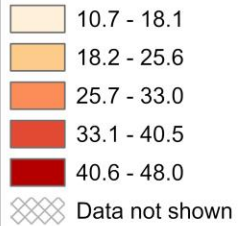
Emergency Department (ED) Discharge Rates Among San Diego County Residents by Demographics, 2019:

- Total Rate
- Race/Ethnicity
 - Asian/Pacific Islander (API)
 - Black
 - Hispanic
 - White
- Age
 - 0-14
 - 15-24
 - 25-44
 - 45-64
 - 65+

Total Emergency Department Discharge Rates* San Diego County, by Subregional Area, 2019



Trauma and Stressor Related Disorders



*Emergency Department (ED) Discharge refers to treatment at an ED facility in San Diego County. Rates calculated per 100,000 residents. Rates not calculated for < 5 cases.
Sources: California Office of Statewide Health Planning and Development (OSHPD), 2019 Emergency Department Discharge database. Population estimates San Diego Association of Governments (SANDAG), 2019 v5/2020.

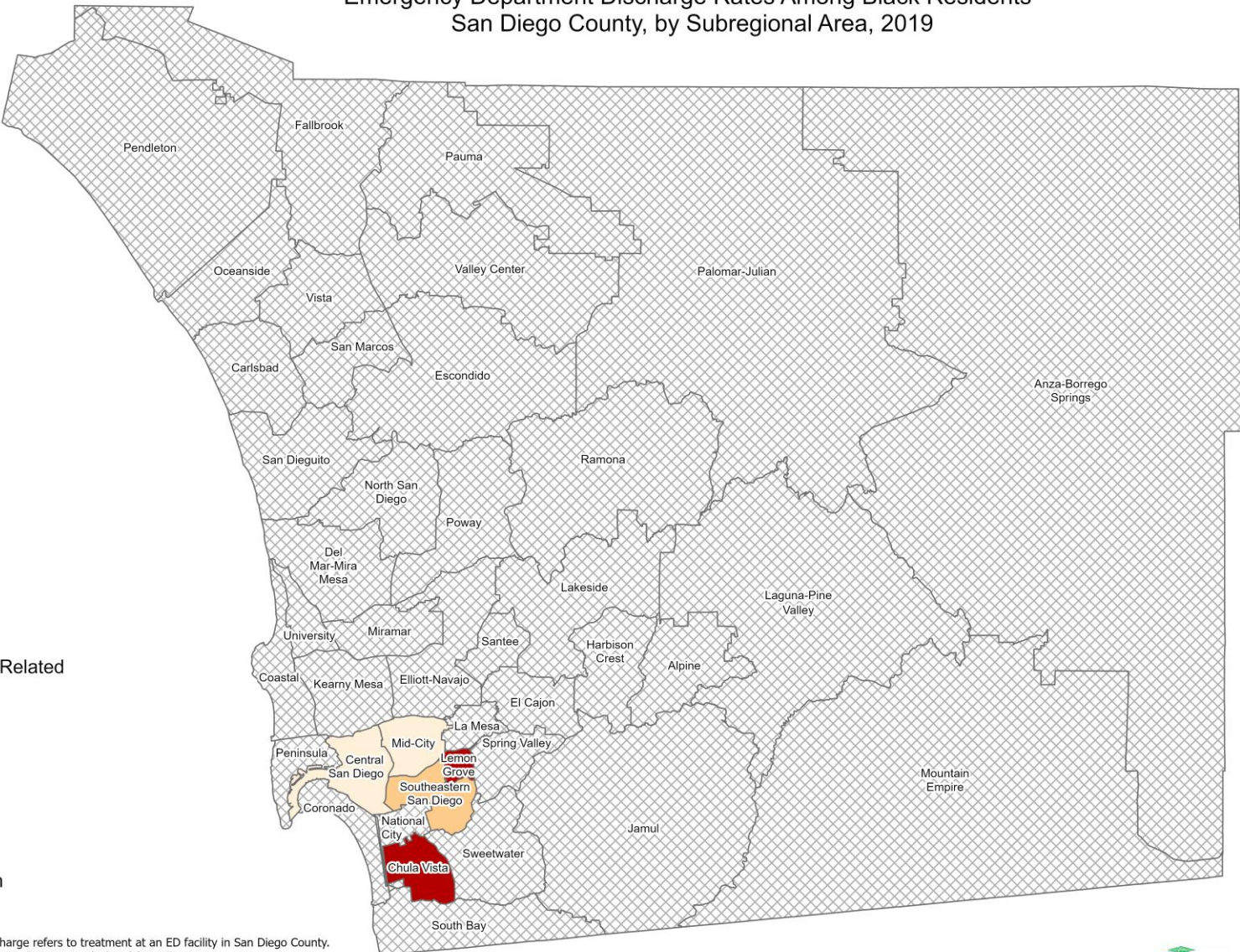
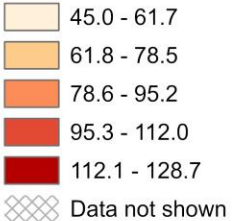
Maps & Analysis by County of San Diego, Health and Human Services Agency, Public Health Services, Community Health Statistics Unit. Contact 619.692.6672. https://www.sandiegocounty.gov/hhsa/programs/phs/community_health_statistics/. December, 2021. LiveWellSD.org.



Emergency Department Discharge Rates Among Black Residents* San Diego County, by Subregional Area, 2019

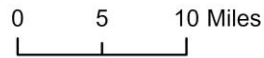


Trauma and Stressor Related Disorders

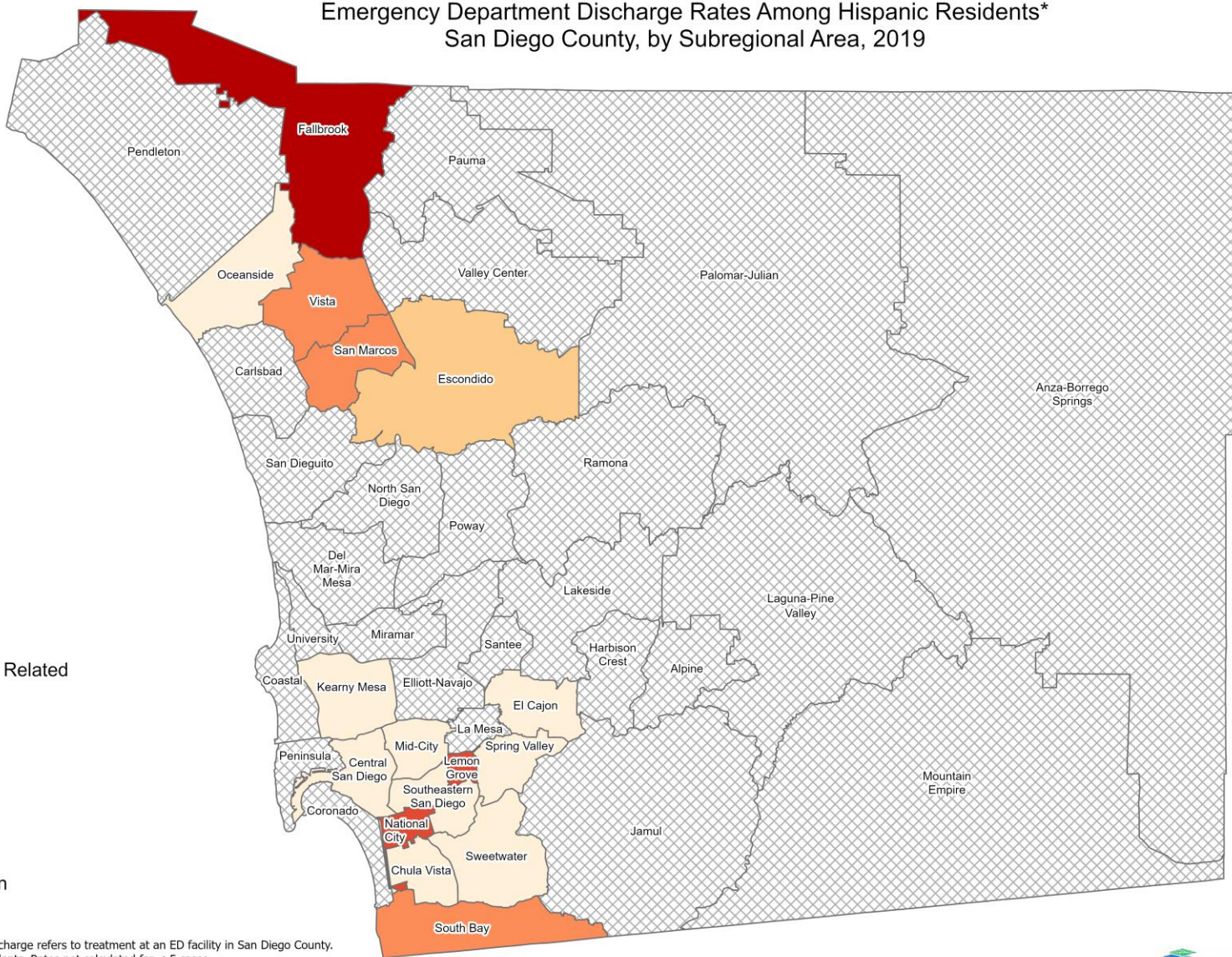


*Emergency Department (ED) Discharge refers to treatment at an ED facility in San Diego County. Rates calculated per 100,000 residents. Rates not calculated for < 5 cases.
Sources: California Office of Statewide Health Planning and Development (OSHPD), 2019 Emergency Department Discharge database. Population estimates San Diego Association of Governments (SANDAG), 2019 v5/2020.

Maps & Analysis by County of San Diego, Health and Human Services Agency, Public Health Services, Community Health Statistics Unit. Contact 619.692.6672. https://www.sandiegocounty.gov/hhsa/programs/phs/community_health_statistics/. December, 2021. LiveWellSD.org.



Emergency Department Discharge Rates Among Hispanic Residents* San Diego County, by Subregional Area, 2019



Trauma and Stressor Related Disorders

- 15.2 - 21.5
- 21.6 - 27.9
- 28.0 - 34.3
- 34.4 - 40.6
- 40.7 - 47.0
- Data not shown

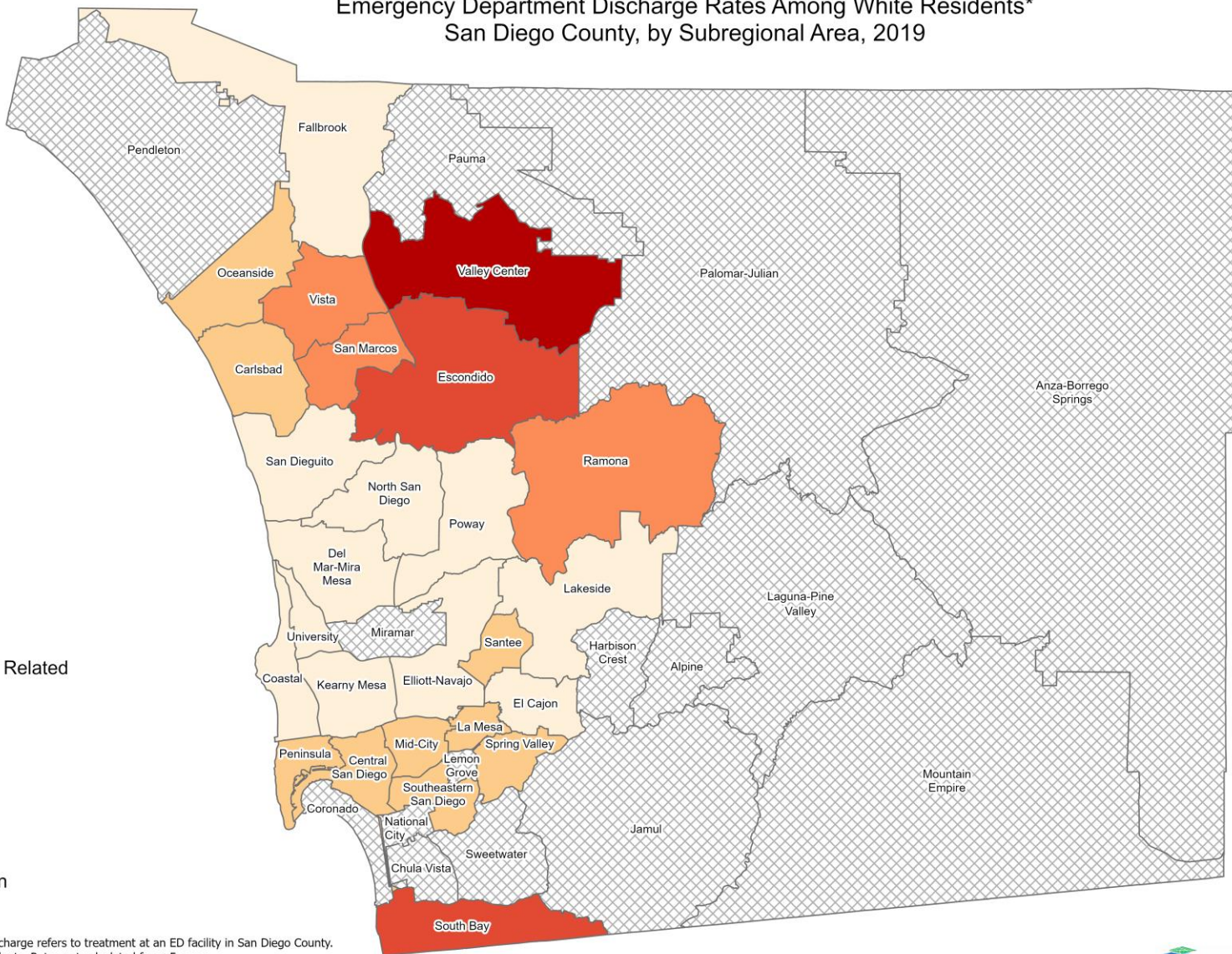
*Emergency Department (ED) Discharge refers to treatment at an ED facility in San Diego County. Rates calculated per 100,000 residents. Rates not calculated for < 5 cases.
Sources: California Office of Statewide Health Planning and Development (OSHPD), 2019 Emergency Department Discharge database. Population estimates San Diego Association of Governments (SANDAG), 2019 v5/2020.

Maps & Analysis by County of San Diego, Health and Human Services Agency, Public Health Services, Community Health Statistics Unit. Contact 619.692.6672. https://www.sandiegocounty.gov/hhsa/programs/phs/community_health_statistics/. December, 2021. LiveWellSD.org.





Emergency Department Discharge Rates Among White Residents* San Diego County, by Subregional Area, 2019



Trauma and Stressor Related Disorders

- 9.1 - 19.8
- 19.9 - 30.5
- 30.6 - 41.2
- 41.3 - 51.9
- 52.0 - 62.6
- Data not shown

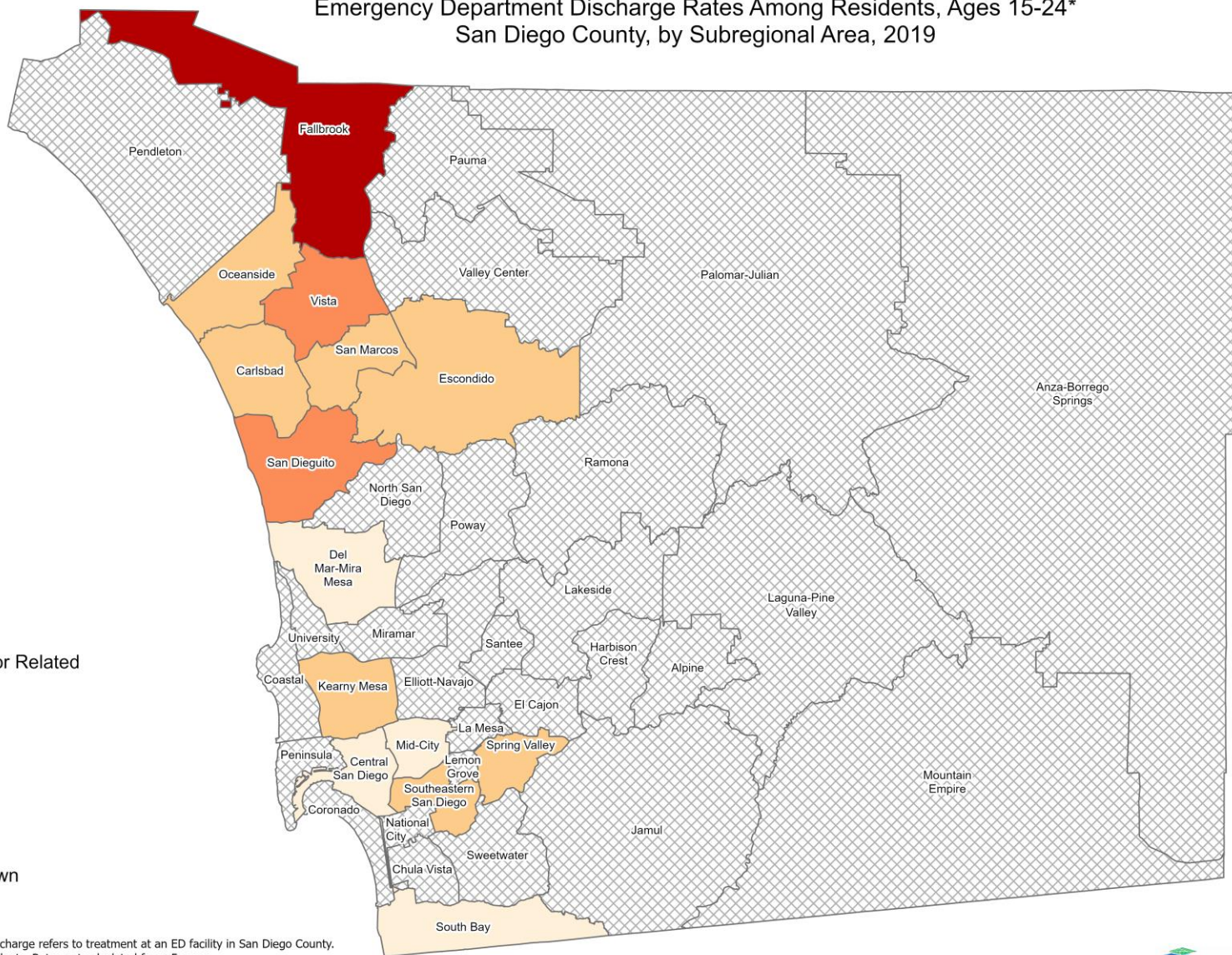
*Emergency Department (ED) Discharge refers to treatment at an ED facility in San Diego County. Rates calculated per 100,000 residents. Rates not calculated for < 5 cases.
Sources: California Office of Statewide Health Planning and Development (OSHPD), 2019 Emergency Department Discharge database. Population estimates San Diego Association of Governments (SANDAG), 2019 v5/2020.

Maps & Analysis by County of San Diego, Health and Human Services Agency, Public Health Services, Community Health Statistics Unit. Contact 619.692.6672. https://www.sandiegocounty.gov/hhsa/programs/phs/community_health_statistics/. December, 2021. LiveWellSD.org.





Emergency Department Discharge Rates Among Residents, Ages 15-24* San Diego County, by Subregional Area, 2019



Trauma and Stressor Related Disorders

- 17.5 - 32.6
- 32.7 - 47.7
- 47.8 - 62.8
- 62.9 - 77.9
- 78.0 - 93.0
- Data not shown

*Emergency Department (ED) Discharge refers to treatment at an ED facility in San Diego County. Rates calculated per 100,000 residents. Rates not calculated for < 5 cases.
Sources: California Office of Statewide Health Planning and Development (OSHPD), 2019 Emergency Department Discharge database. Population estimates San Diego Association of Governments (SANDAG), 2019 v5/2020.

Maps & Analysis by County of San Diego, Health and Human Services Agency, Public Health Services, Community Health Statistics Unit. Contact 619.692.6672. https://www.sandiegocounty.gov/hhsa/programs/phs/community_health_statistics/. December, 2021. LiveWellSD.org.

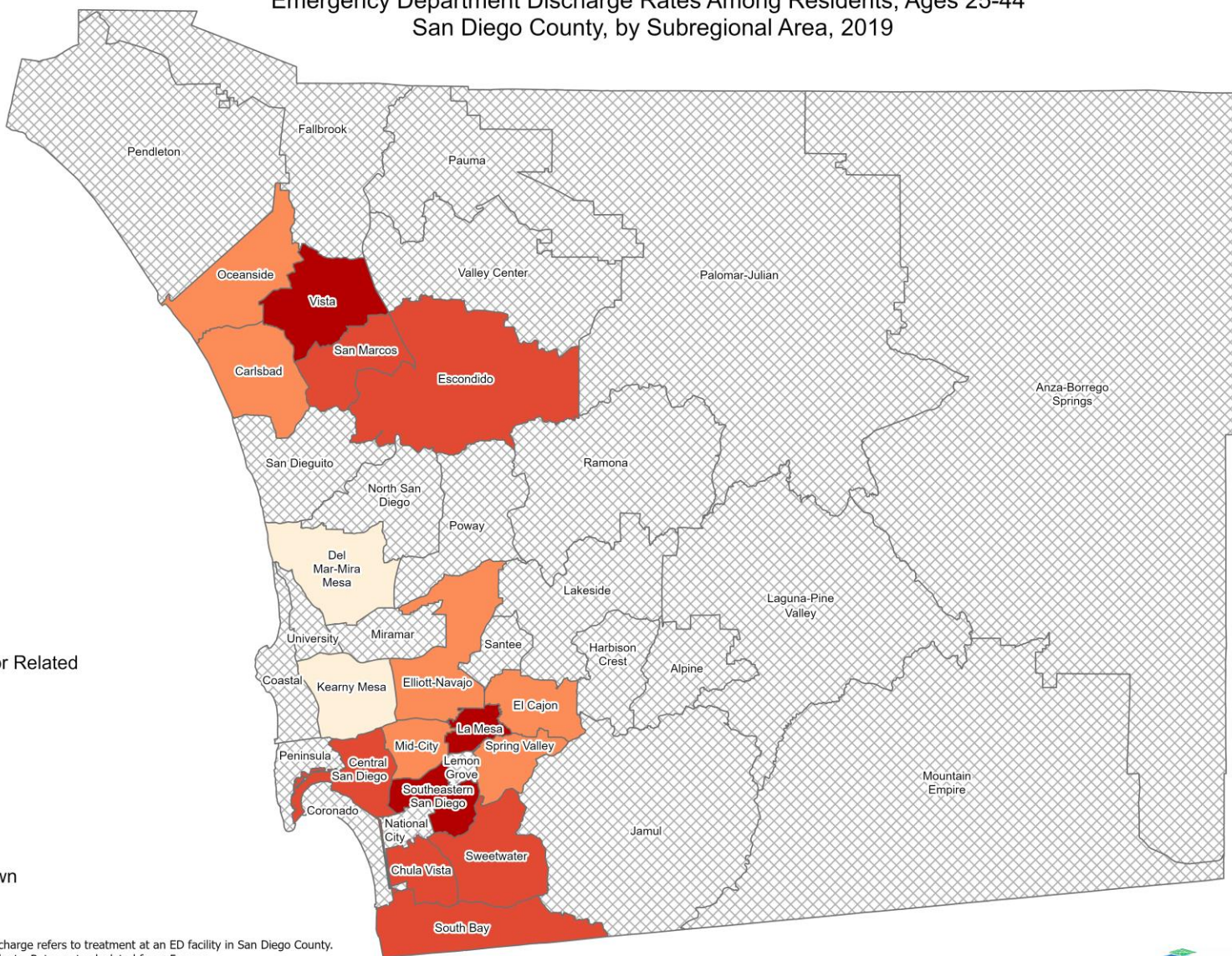
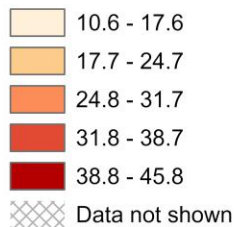




Emergency Department Discharge Rates Among Residents, Ages 25-44* San Diego County, by Subregional Area, 2019



Trauma and Stressor Related Disorders



*Emergency Department (ED) Discharge refers to treatment at an ED facility in San Diego County. Rates calculated per 100,000 residents. Rates not calculated for < 5 cases.
Sources: California Office of Statewide Health Planning and Development (OSHPD), 2019 Emergency Department Discharge database. Population estimates San Diego Association of Governments (SANDAG), 2019 v5/2020.

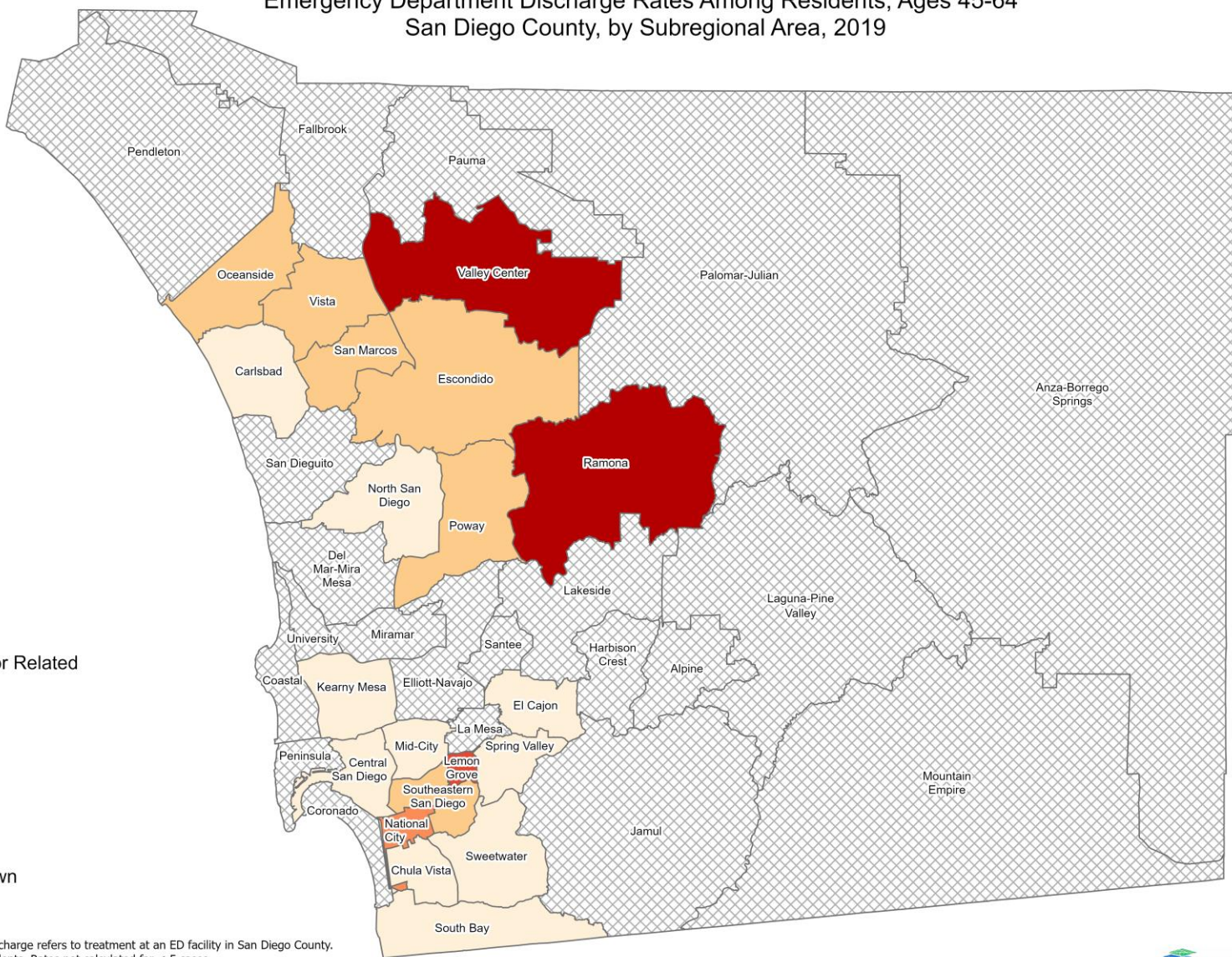
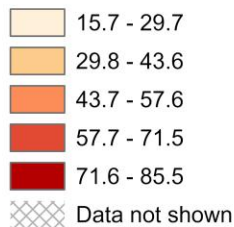
Maps & Analysis by County of San Diego, Health and Human Services Agency, Public Health Services, Community Health Statistics Unit. Contact 619.692.6672. https://www.sandiegocounty.gov/hhsa/programs/phs/community_health_statistics/. December, 2021. LiveWellSD.org.



Emergency Department Discharge Rates Among Residents, Ages 45-64* San Diego County, by Subregional Area, 2019



Trauma and Stressor Related Disorders

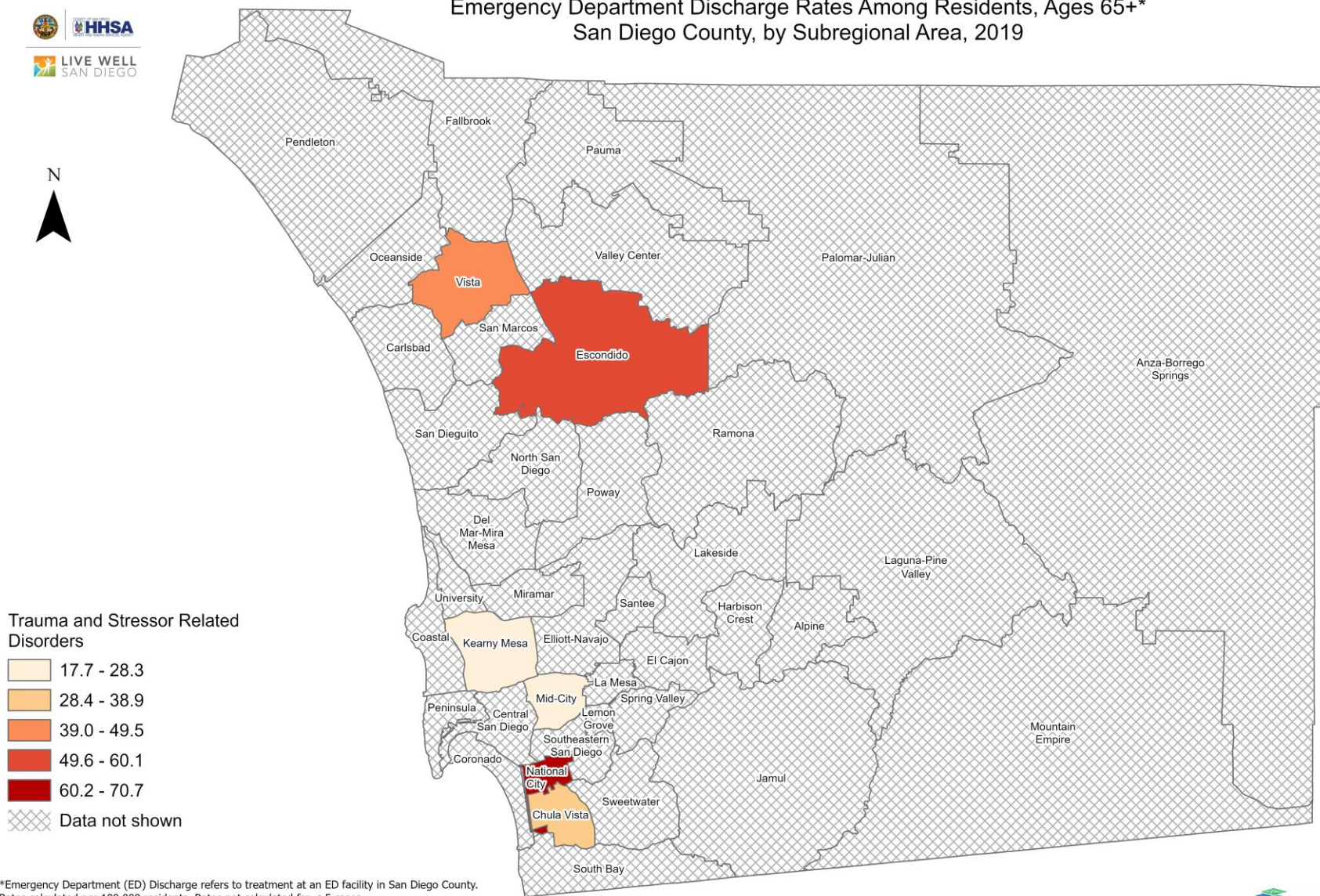


*Emergency Department (ED) Discharge refers to treatment at an ED facility in San Diego County. Rates calculated per 100,000 residents. Rates not calculated for < 5 cases.
Sources: California Office of Statewide Health Planning and Development (OSHPD), 2019 Emergency Department Discharge database. Population estimates San Diego Association of Governments (SANDAG), 2019 v5/2020.

Maps & Analysis by County of San Diego, Health and Human Services Agency, Public Health Services, Community Health Statistics Unit. Contact 619.692.6672. https://www.sandiegocounty.gov/hhsa/programs/phs/community_health_statistics/. December, 2021. LiveWellSD.org.



Emergency Department Discharge Rates Among Residents, Ages 65+* San Diego County, by Subregional Area, 2019



*Emergency Department (ED) Discharge refers to treatment at an ED facility in San Diego County. Rates calculated per 100,000 residents. Rates not calculated for < 5 cases. Sources: California Office of Statewide Health Planning and Development (OSHPD), 2019 Emergency Department Discharge database. Population estimates San Diego Association of Governments (SANDAG), 2019 v5/2020.

Maps & Analysis by County of San Diego, Health and Human Services Agency, Public Health Services, Community Health Statistics Unit. Contact 619.692.6672. https://www.sandiegocounty.gov/hhsa/programs/phs/community_health_statistics/. December, 2021. LiveWellSD.org.

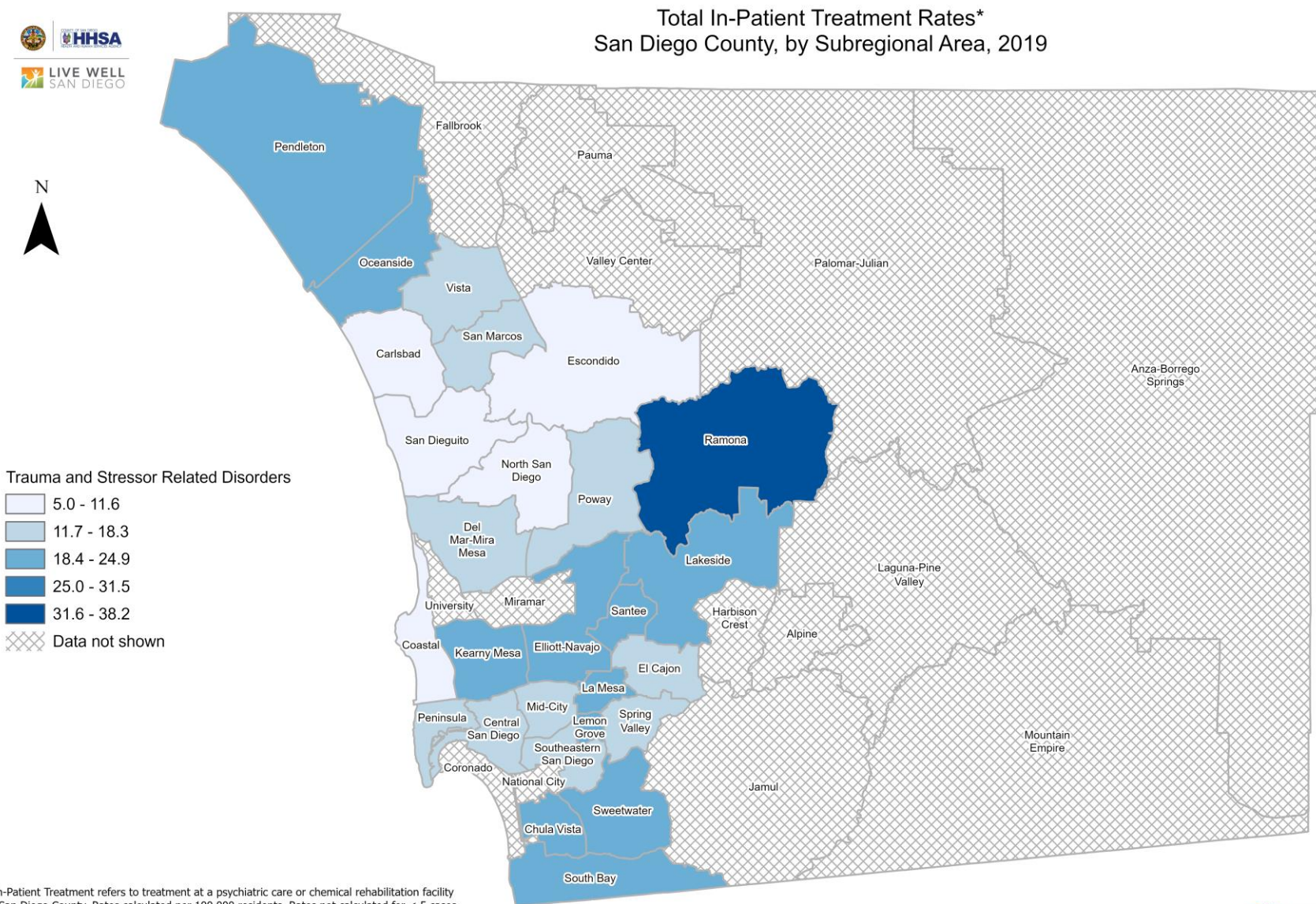


Section 4

In-Patient Treatment (IPT) Rates Among San Diego County Residents by Demographics, 2019:

- Total Rate
- Race/Ethnicity
 - Asian/Pacific Islander (API)
 - Black
 - Hispanic
 - White
- Age
 - 0-14
 - 15-24
 - 25-44
 - 45-64
 - 65+

Total In-Patient Treatment Rates* San Diego County, by Subregional Area, 2019



Trauma and Stressor Related Disorders

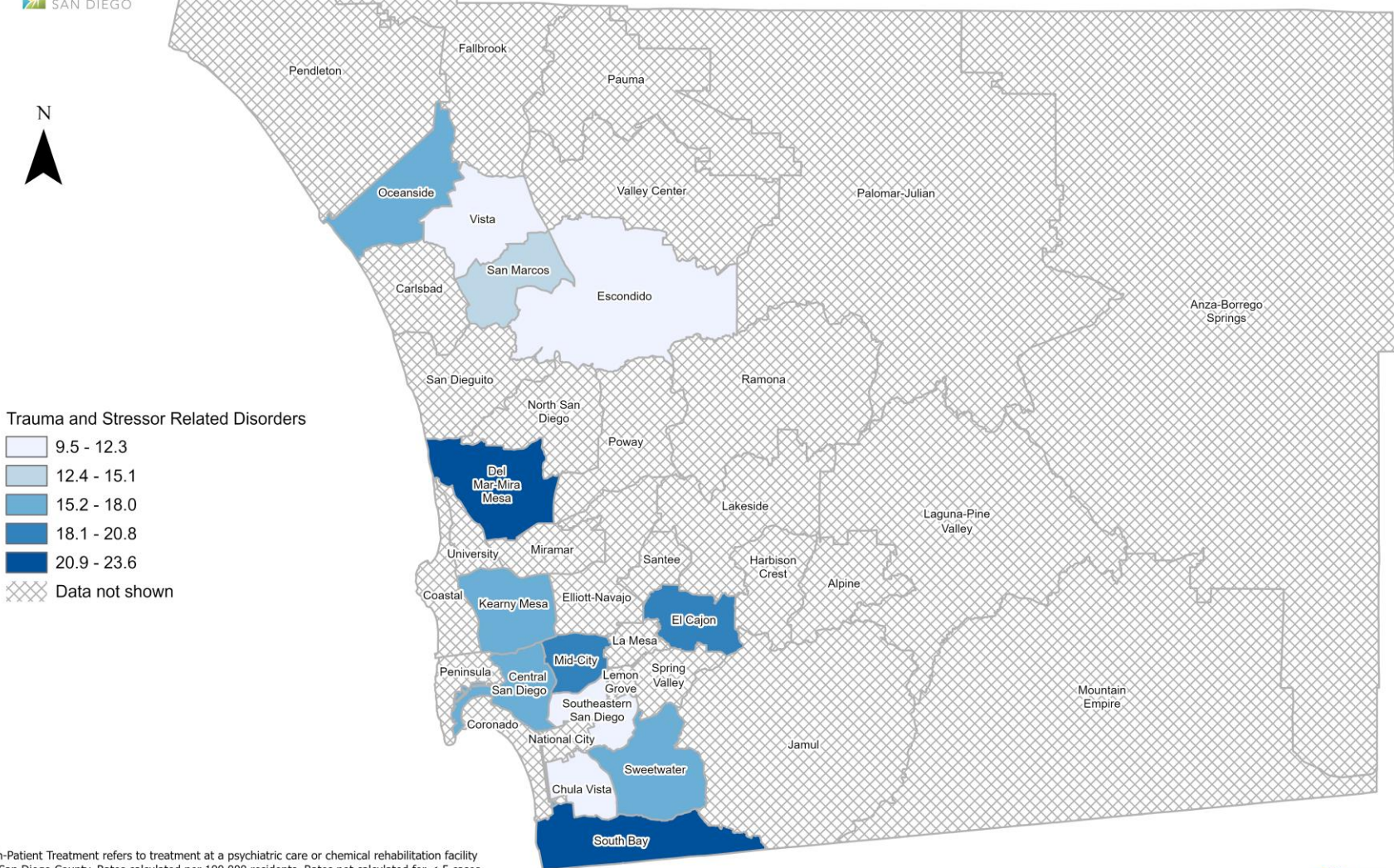
- 5.0 - 11.6
- 11.7 - 18.3
- 18.4 - 24.9
- 25.0 - 31.5
- 31.6 - 38.2
- Data not shown

*In-Patient Treatment refers to treatment at a psychiatric care or chemical rehabilitation facility in San Diego County. Rates calculated per 100,000 residents. Rates not calculated for < 5 cases. Sources: California Office of Statewide Health Planning and Development (OSHPD), 2019 Patient Discharge Database. Population estimates San Diego Association of Governments (SANDAG), 2019 v5/2020.

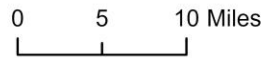
0 5 10 Miles



In-Patient Treatment Rates Among Hispanic Residents* San Diego County, by Subregional Area, 2019



*In-Patient Treatment refers to treatment at a psychiatric care or chemical rehabilitation facility in San Diego County. Rates calculated per 100,000 residents. Rates not calculated for < 5 cases. Sources: California Office of Statewide Health Planning and Development (OSHPD), 2019 Patient Discharge Database. Population estimates San Diego Association of Governments (SANDAG), 2019 v5/2020.



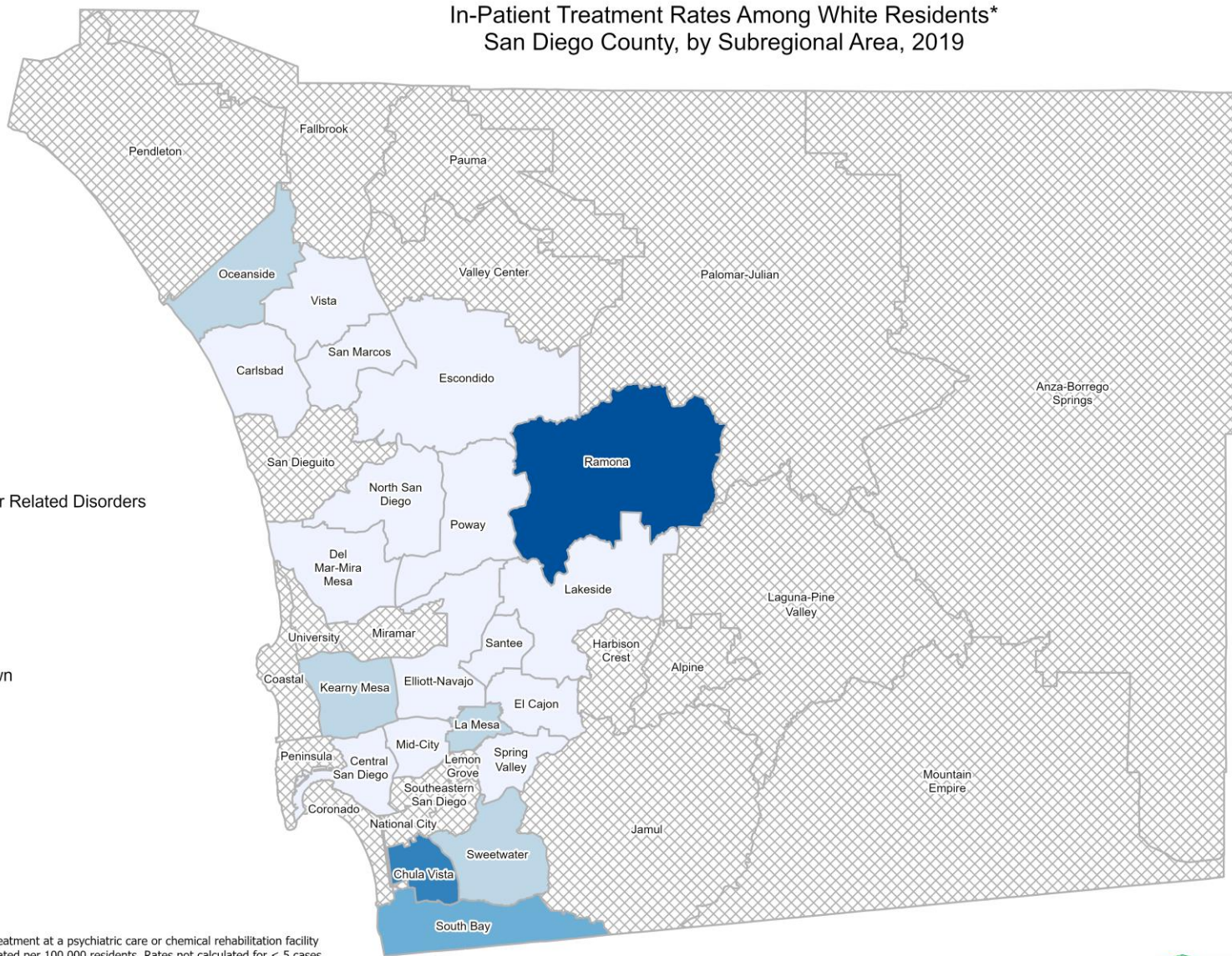


In-Patient Treatment Rates Among White Residents* San Diego County, by Subregional Area, 2019



Trauma and Stressor Related Disorders

- 7.9 - 18.4
- 18.5 - 28.9
- 29.0 - 39.3
- 39.4 - 49.8
- 49.9 - 60.3
- Data not shown

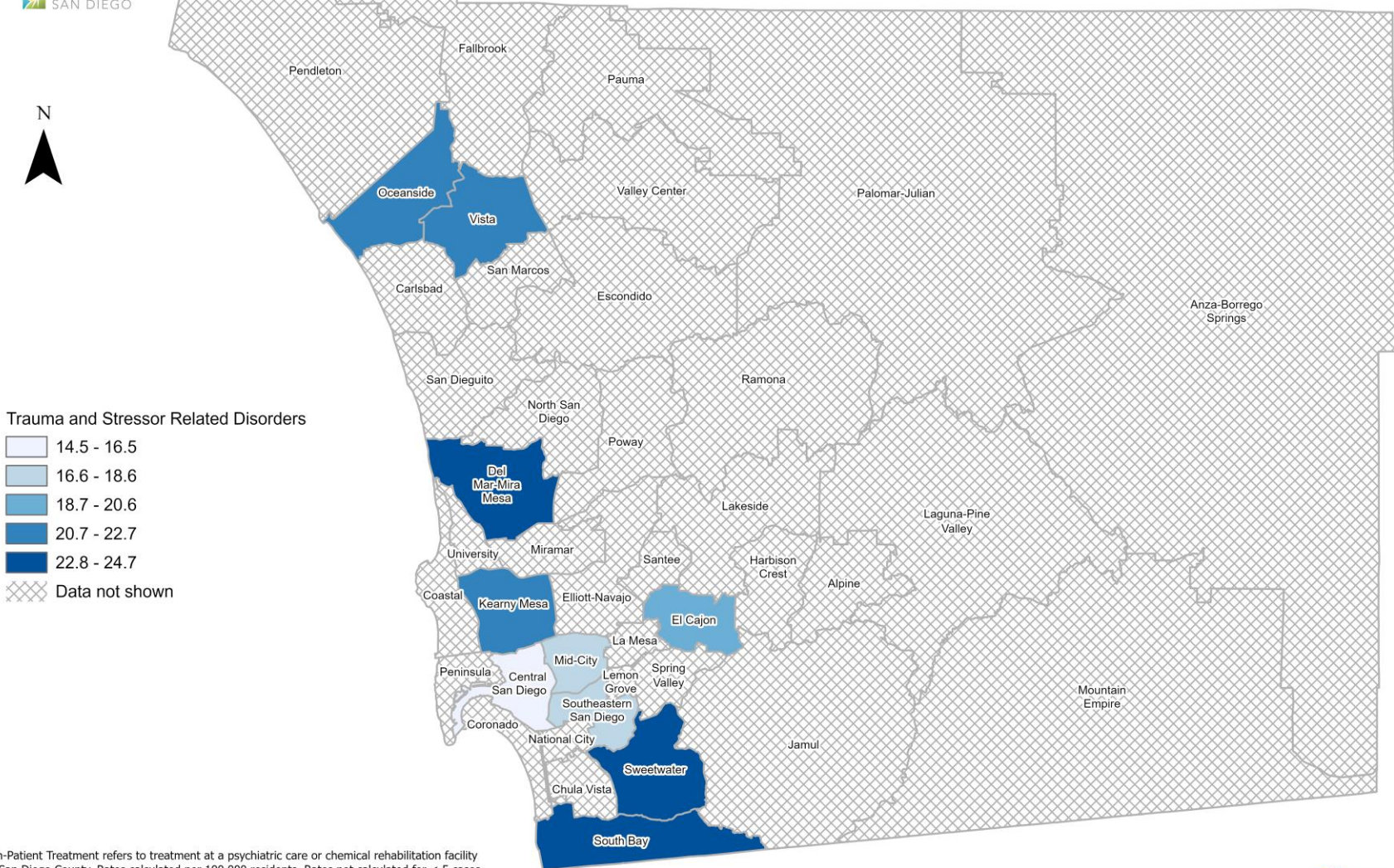


*In-Patient Treatment refers to treatment at a psychiatric care or chemical rehabilitation facility in San Diego County. Rates calculated per 100,000 residents. Rates not calculated for < 5 cases. Sources: California Office of Statewide Health Planning and Development (OSHPD), 2019 Patient Discharge Database. Population estimates San Diego Association of Governments (SANDAG), 2019 v5/2020.

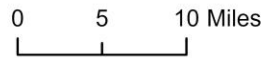




In-Patient Treatment Rates Among Residents, Ages 0-14* San Diego County, by Subregional Area, 2019



*In-Patient Treatment refers to treatment at a psychiatric care or chemical rehabilitation facility in San Diego County. Rates calculated per 100,000 residents. Rates not calculated for < 5 cases.
Sources: California Office of Statewide Health Planning and Development (OSHPD), 2019 Patient Discharge Database.
Population estimates San Diego Association of Governments (SANDAG), 2019 v5/2020.



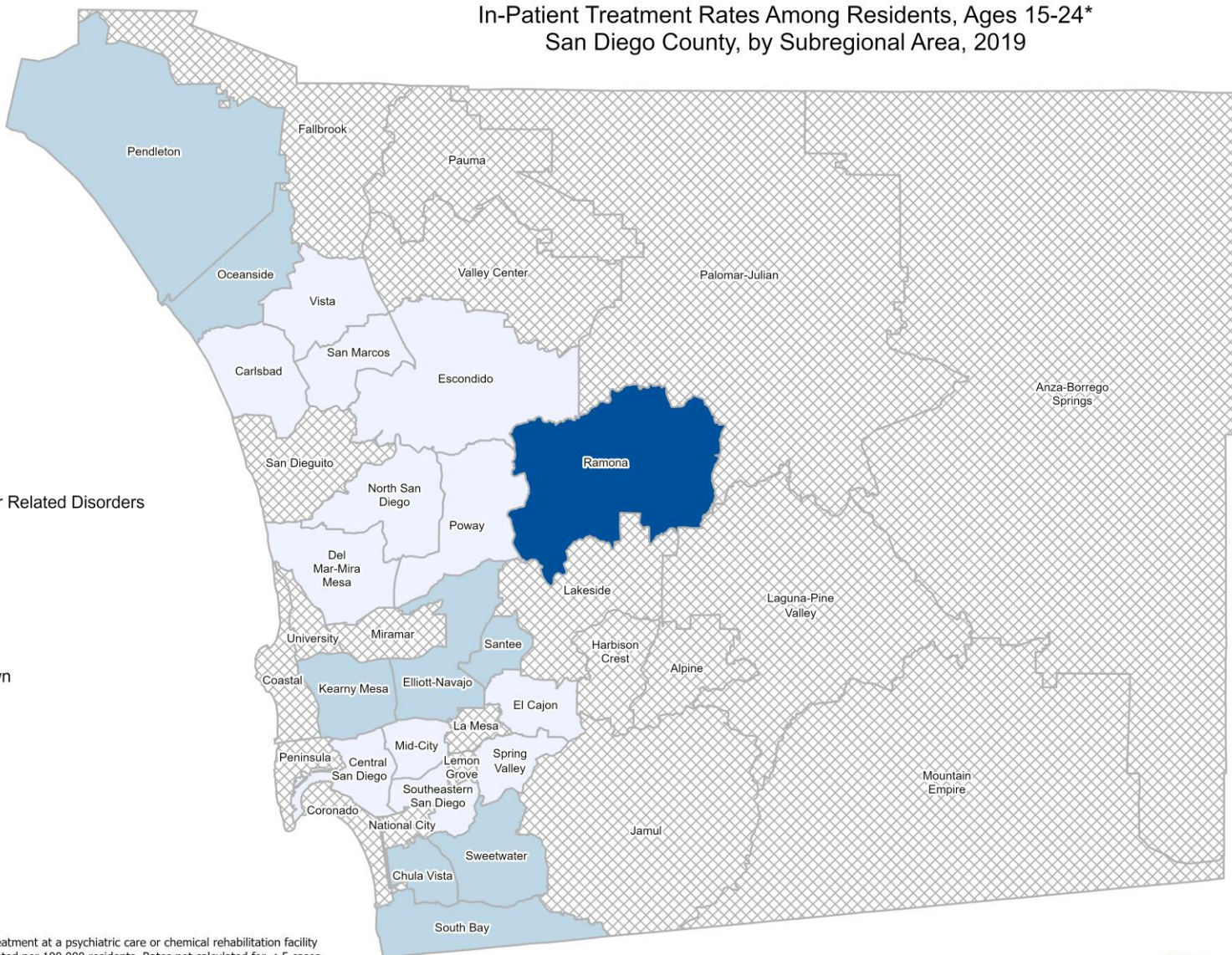


In-Patient Treatment Rates Among Residents, Ages 15-24* San Diego County, by Subregional Area, 2019



Trauma and Stressor Related Disorders

- 26.3 - 50.4
- 50.5 - 74.5
- 74.6 - 98.7
- 98.8 - 122.8
- 122.9 - 146.9
- Data not shown

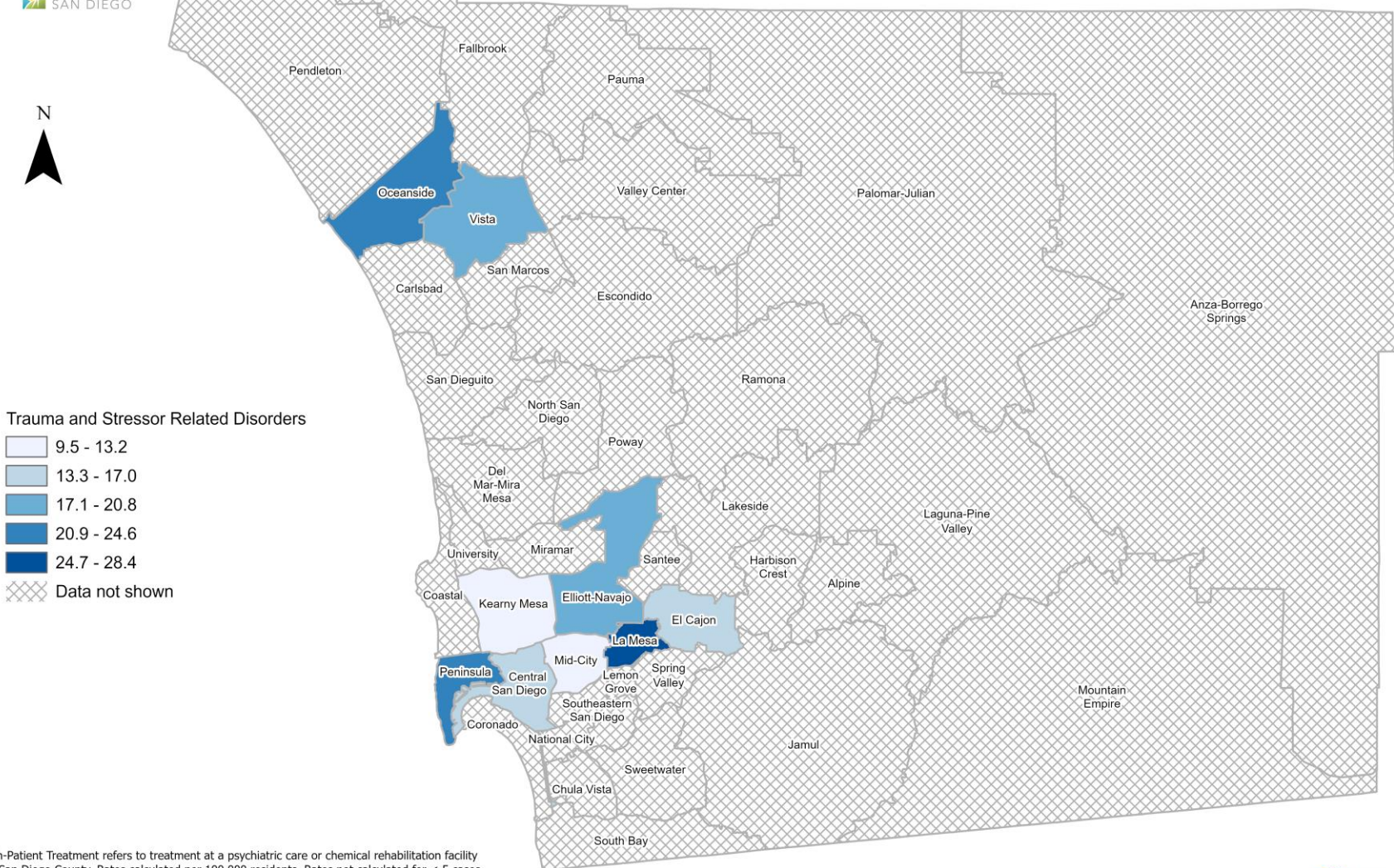


*In-Patient Treatment refers to treatment at a psychiatric care or chemical rehabilitation facility in San Diego County. Rates calculated per 100,000 residents. Rates not calculated for < 5 cases.
Sources: California Office of Statewide Health Planning and Development (OSHPD), 2019 Patient Discharge Database.
Population estimates San Diego Association of Governments (SANDAG), 2019 v5/2020.

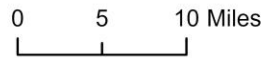




In-Patient Treatment Rates Among Residents, Ages 25-44* San Diego County, by Subregional Area, 2019



*In-Patient Treatment refers to treatment at a psychiatric care or chemical rehabilitation facility in San Diego County. Rates calculated per 100,000 residents. Rates not calculated for < 5 cases. Sources: California Office of Statewide Health Planning and Development (OSHPD), 2019 Patient Discharge Database. Population estimates San Diego Association of Governments (SANDAG), 2019 v5/2020.

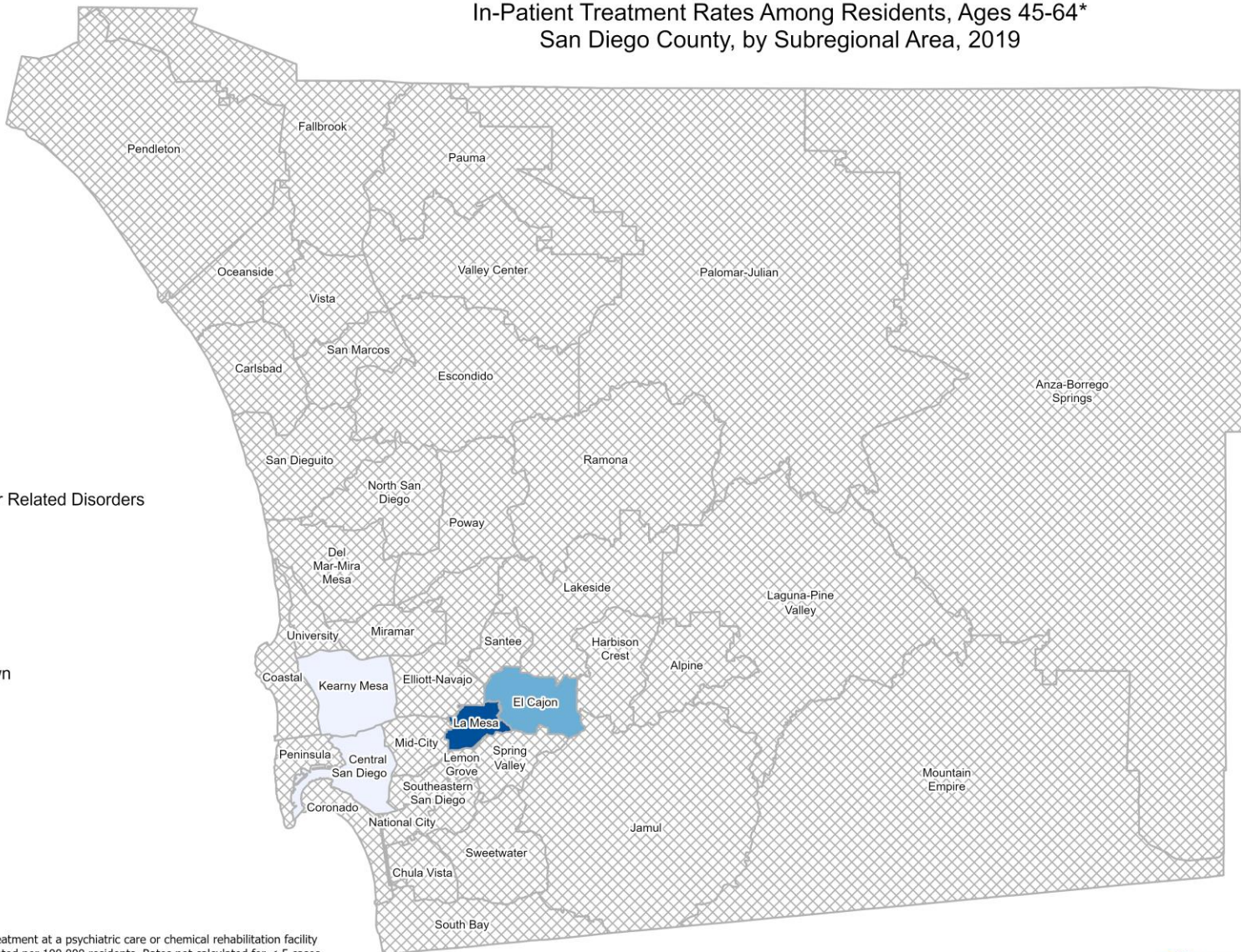
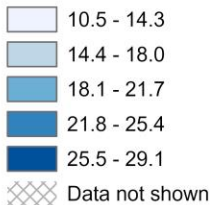




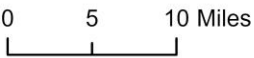
In-Patient Treatment Rates Among Residents, Ages 45-64* San Diego County, by Subregional Area, 2019



Trauma and Stressor Related Disorders



*In-Patient Treatment refers to treatment at a psychiatric care or chemical rehabilitation facility in San Diego County. Rates calculated per 100,000 residents. Rates not calculated for < 5 cases. Sources: California Office of Statewide Health Planning and Development (OSHPD), 2019 Patient Discharge Database. Population estimates San Diego Association of Governments (SANDAG), 2019 v5/2020.



Maps & Analysis by County of San Diego, Health and Human Services Agency, Public Health Services, Community Health Statistics Unit. Contact 619.692.6672. https://www.sandiegocounty.gov/hhsa/programs/phs/community_health_statistics/. December 2021.