



2022 MAP ATLAS

Lung Cancer

County of San Diego | Health and Human Services Agency | Public Health Services | Community Health Statistics Unit

September 2024

Data Sources

Death* is based on underlying cause of death among San Diego County residents.

Rates per 100,000 residents and rounded to integer. Starting with data year 2022, all rates based on events <20 are suppressed due to statistical instability. Maps not produced for conditions/outcomes with no SRA-level rates. Some sections may have no maps.

Sources: California Department of Public Health, Center for Health Statistics, Office of Health Information and Research, Vital Records Business Intelligence System (VRBIS), 2022. San Diego Association of Governments (SANDAG) Population Estimates, 2022 (v11/2023). 2022 population estimates were derived from the 2020 decennial census. The COVID-19 pandemic was associated with increases in all-cause mortality. COVID-19 deaths have affected the patterns of mortality including death rates.

*For all opioid overdoses, chronic kidney disease, heat illness/injury, and traumatic brain injuries, death rate is based on the multiple/contributing cause of death among San Diego County residents.

Hospitalization refers to treatment at a general acute care facility in San Diego County.

Rates per 100,000 residents and rounded to integer. Starting with data year 2022, all rates based on events <20 are suppressed due to statistical instability. Maps not produced for conditions/outcomes with no SRA-level rates. Some sections may have no maps.

Sources: California Department of Healthcare Access and Information (HCAI), 2022 Patient Discharge Database. San Diego Association of Governments (SANDAG) Population Estimates, 2022 (v11/2023). 2022 population estimates were derived from the 2020 decennial census.

Emergency Department (ED) Discharge refers to treatment at an ED facility in San Diego County.

Rates per 100,000 residents and rounded to integer. Starting with data year 2022, all rates based on events <20 are suppressed due to statistical instability. Maps not produced for conditions/outcomes with no SRA-level rates. Some sections may have no maps.

Sources: California Department of Healthcare Access and Information (HCAI), 2022 Emergency Department Discharge Database. San Diego Association of Governments (SANDAG) Population Estimates, 2022 (v11/2023). 2022 population estimates were derived from the 2020 decennial census.

In-Patient Treatment refers to treatment at a psychiatric care or chemical rehabilitation facility in San Diego County.

Rates per 100,000 residents and rounded to integer. Starting with data year 2022, all rates based on events <20 are suppressed due to statistical instability. Maps not produced for conditions/outcomes with no SRA-level rates. Some sections may have no maps.

Sources: California Department of Healthcare Access and Information (HCAI), 2022 Patient Discharge Database. San Diego Association of Governments (SANDAG) Population Estimates, 2022 (v11/2023). 2022 population estimates were derived from the 2020 decennial census.

Maps & Analysis by County of San Diego, Health and Human Services Agency, Public Health Services, Community Health Statistics Unit. Contact 619.692.6672. September 2024.

https://www.sandiegocounty.gov/hhsa/programs/phs/community_health_statistics/LiveWellSD.org.

For more detailed explanation of geography, methods, and sources, please refer to CHSU's [2022 Community Profiles Data Guide and Data Dictionary Dashboards](#).

Table of Contents

Section 1: Deaths	1
Section 2: Hospitalizations.....	4
Section 3: Emergency Department (ED) Discharges	7
Section 4: In-Patient Treatments (IPT).....	9



Section 1: Deaths

Death Rates Among San Diego County Residents by Demographic, 2022:

- Total Rate
- Race/Ethnicity
 - Asian/Pacific Islander (API)
 - Black
 - Hispanic
 - White
- Age Group
 - 0-9 Years
 - 10-19 Years
 - 20-29 Years
 - 30-39 Years
 - 40-49 Years
 - 50-59 Years
 - 60-69 Years
 - 70-79 Years
 - 80+ Years

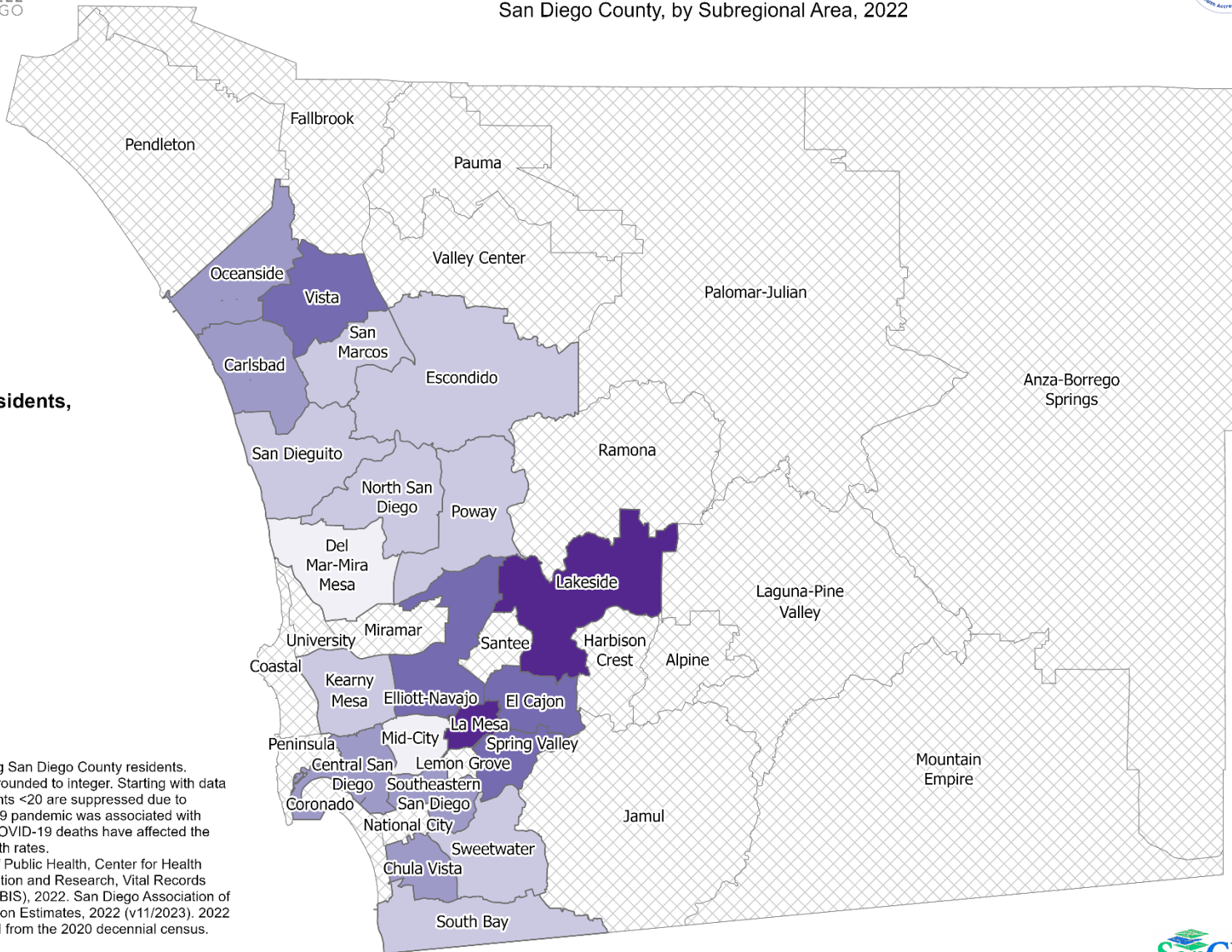
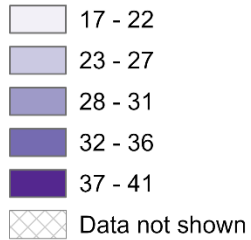


Total Death Rates* San Diego County, by Subregional Area, 2022



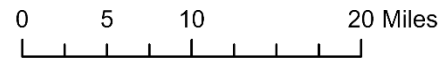
Rates per 100,000 residents, rounded to integer

Lung Cancer



*Underlying cause of death among San Diego County residents. Rates per 100,000 residents and rounded to integer. Starting with data year 2022, all rates based on events <20 are suppressed due to statistical instability. The COVID-19 pandemic was associated with increases in all-cause mortality. COVID-19 deaths have affected the patterns of mortality including death rates.
Sources: California Department of Public Health, Center for Health Statistics, Office of Health Information and Research, Vital Records Business Intelligence System (VRBIS), 2022. San Diego Association of Governments (SANDAG) Population Estimates, 2022 (v11/2023). 2022 population estimates were derived from the 2020 decennial census.

Maps & Analysis by County of San Diego, Health and Human Services Agency, Public Health Services, Community Health Statistics Unit. Contact 619.692.6672. https://www.sandiegocounty.gov/hhsa/programs/phs/community_health_statistics/. LiveWellSD.org. August 2024.



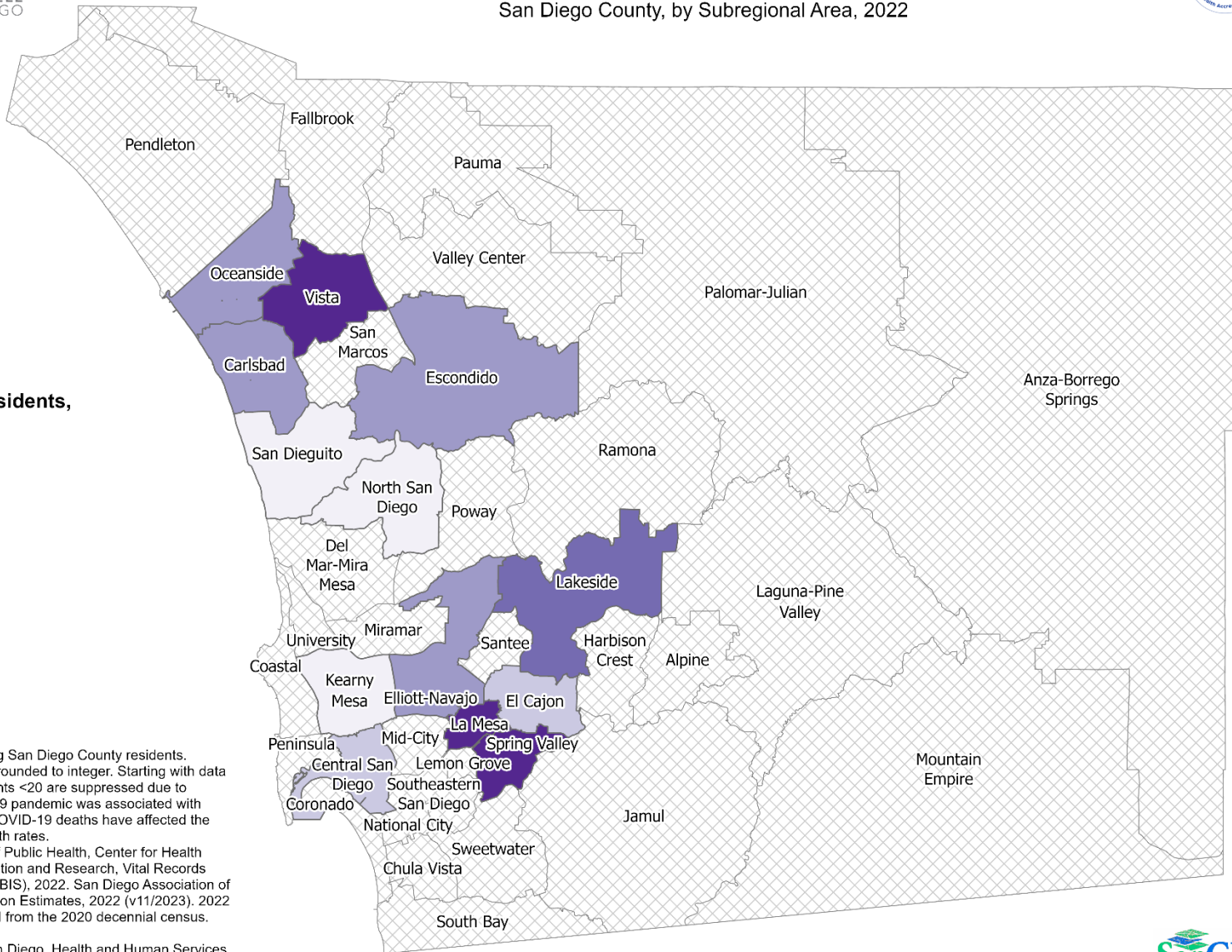
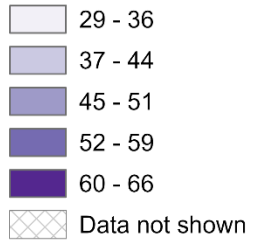


Death Rates Among White Residents* San Diego County, by Subregional Area, 2022



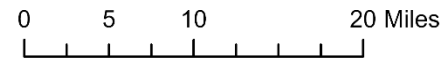
Rates per 100,000 residents, rounded to integer

Lung Cancer



*Underlying cause of death among San Diego County residents. Rates per 100,000 residents and rounded to integer. Starting with data year 2022, all rates based on events <20 are suppressed due to statistical instability. The COVID-19 pandemic was associated with increases in all-cause mortality. COVID-19 deaths have affected the patterns of mortality including death rates.
Sources: California Department of Public Health, Center for Health Statistics, Office of Health Information and Research, Vital Records Business Intelligence System (VRBIS), 2022. San Diego Association of Governments (SANDAG) Population Estimates, 2022 (v11/2023). 2022 population estimates were derived from the 2020 decennial census.

Maps & Analysis by County of San Diego, Health and Human Services Agency, Public Health Services, Community Health Statistics Unit. Contact 619.692.6672. https://www.sandiegocounty.gov/hhsa/programs/phs/community_health_statistics/. LiveWellSD.org. August 2024.





Section 2: Hospitalizations

Hospitalization Rates Among San Diego County Residents by Demographic, 2022:

- Total Rate
- Race/Ethnicity
 - Asian/Pacific Islander (API)
 - Black
 - Hispanic
 - White
- Age Group
 - 0-9 Years
 - 10-19 Years
 - 20-29 Years
 - 30-39 Years
 - 40-49 Years
 - 50-59 Years
 - 60-69 Years
 - 70-79 Years
 - 80+ Years

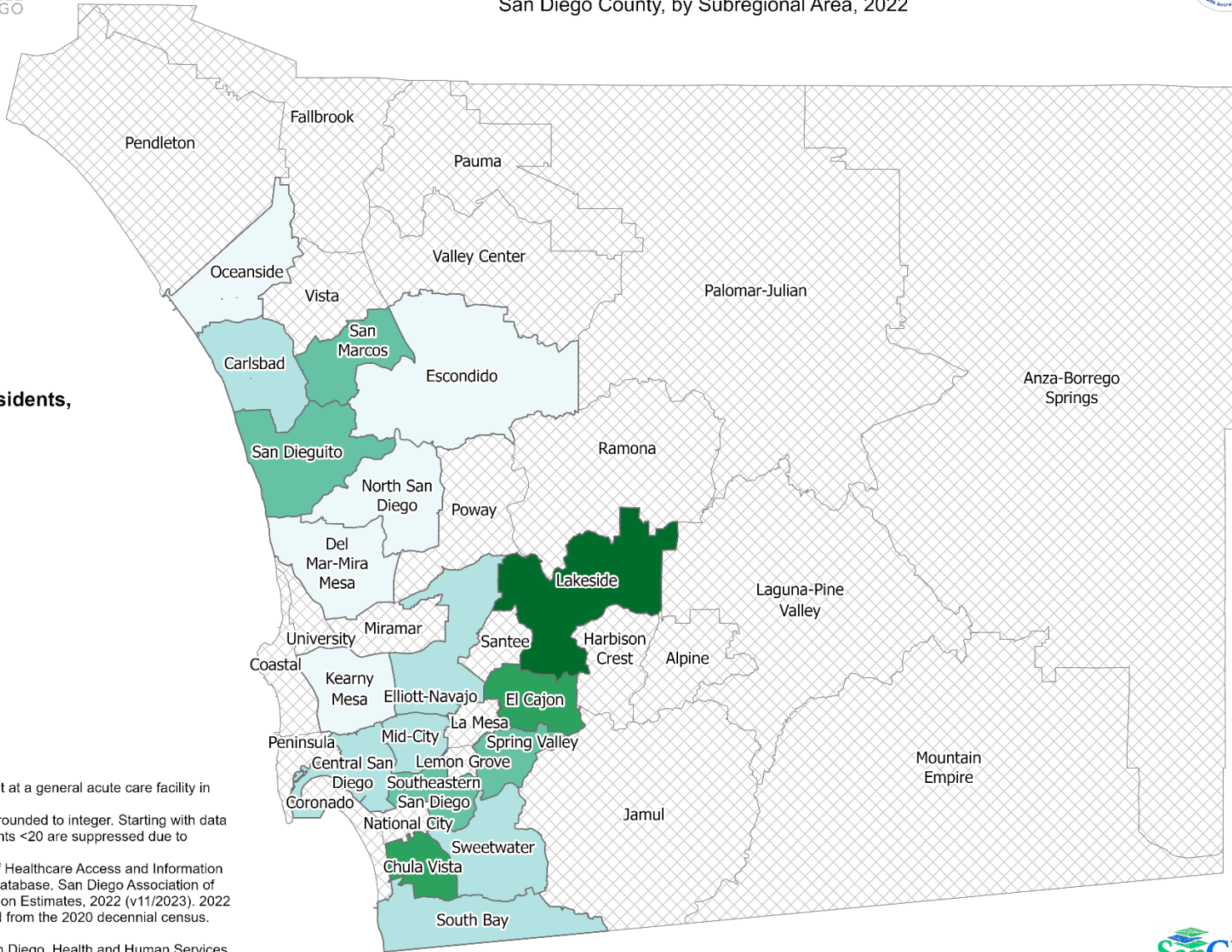
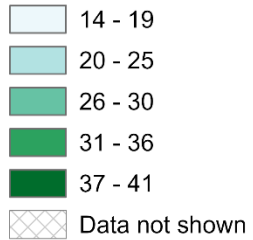


Total Hospitalization Rates* San Diego County, by Subregional Area, 2022



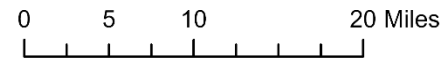
**Rates per 100,000 residents,
rounded to integer**

Lung Cancer



*Hospitalization refers to treatment at a general acute care facility in San Diego County.
Rates per 100,000 residents and rounded to integer. Starting with data year 2022, all rates based on events <20 are suppressed due to statistical instability.
Sources: California Department of Healthcare Access and Information (HCAI), 2022 Patient Discharge Database. San Diego Association of Governments (SANDAG) Population Estimates, 2022 (v11/2023). 2022 population estimates were derived from the 2020 decennial census.

Maps & Analysis by County of San Diego, Health and Human Services Agency, Public Health Services, Community Health Statistics Unit.
Contact 619.692.6672. https://www.sandiegocounty.gov/hhsa/programs/phs/community_health_statistics/
LiveWellSD.org.
August 2024.



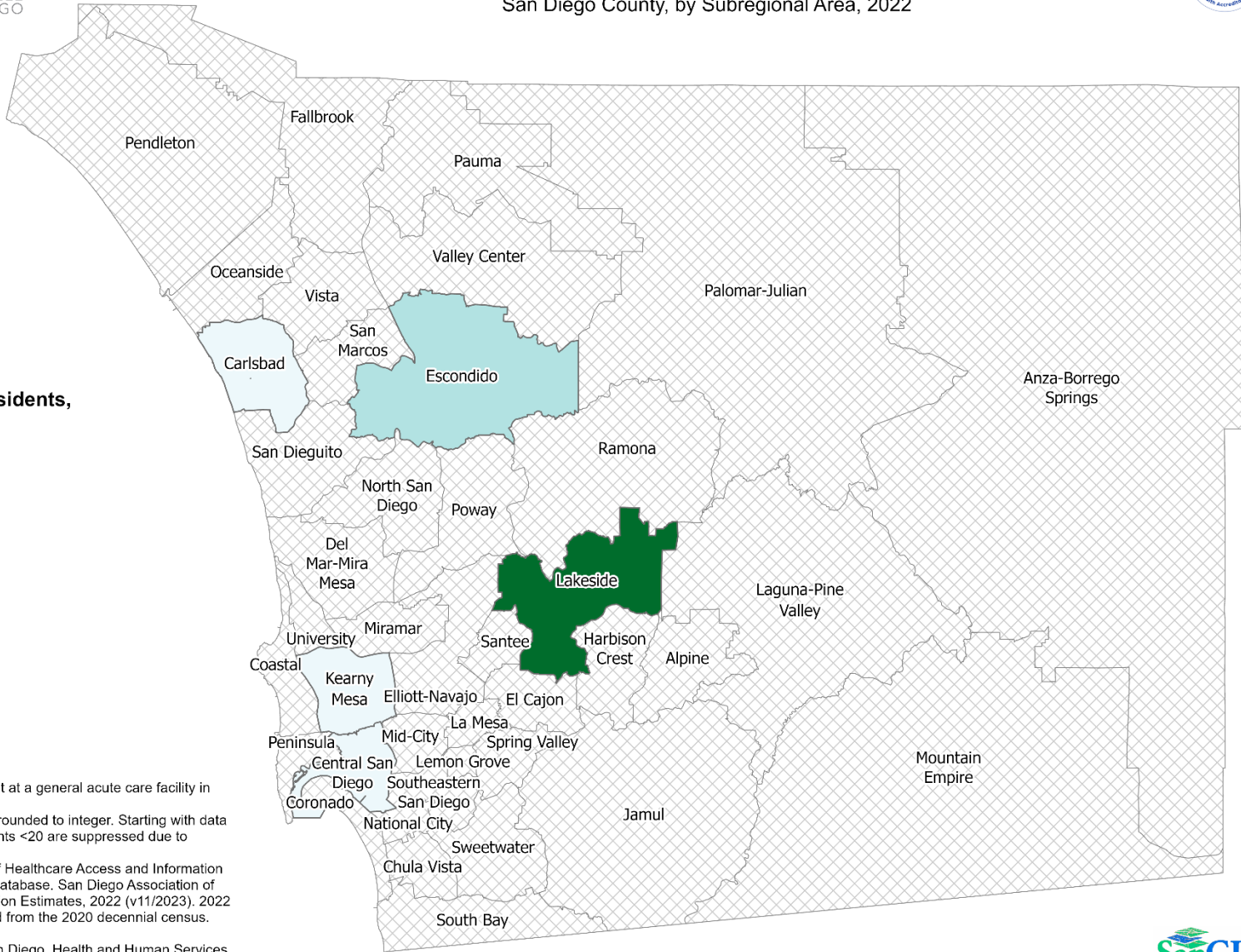
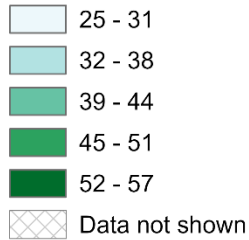


Hospitalization Rates Among White Residents* San Diego County, by Subregional Area, 2022



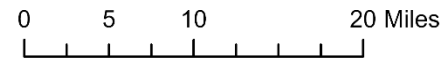
**Rates per 100,000 residents,
rounded to integer**

Lung Cancer



*Hospitalization refers to treatment at a general acute care facility in San Diego County. Rates per 100,000 residents and rounded to integer. Starting with data year 2022, all rates based on events <20 are suppressed due to statistical instability. Sources: California Department of Healthcare Access and Information (HCAI), 2022 Patient Discharge Database. San Diego Association of Governments (SANDAG) Population Estimates, 2022 (v11/2023). 2022 population estimates were derived from the 2020 decennial census.

Maps & Analysis by County of San Diego, Health and Human Services Agency, Public Health Services, Community Health Statistics Unit. Contact 619.692.6672. https://www.sandiegocounty.gov/hhsa/programs/phs/community_health_statistics/ LiveWellSD.org. August 2024.



Section 3: Emergency Department Discharges

Emergency Department (ED) Discharge Rates Among San Diego County Residents by Demographic, 2022:

- Total Rate
- Race/Ethnicity
 - Asian/Pacific Islander (API)
 - Black
 - Hispanic
 - White
- Age Group
 - 0-9 Years
 - 10-19 Years
 - 20-29 Years
 - 30-39 Years
 - 40-49 Years
 - 50-59 Years
 - 60-69 Years
 - 70-79 Years
 - 80+ Years



No SRA-level rate data
available for this section.



Section 4: In-Patient Treatment

In-Patient Treatment (IPT) Rates Among San Diego County Residents by Demographic, 2022:

- Total Rate
- Race/Ethnicity
 - Asian/Pacific Islander (API)
 - Black
 - Hispanic
 - White
- Age Group
 - 0-9 Years
 - 10-19 Years
 - 20-29 Years
 - 30-39 Years
 - 40-49 Years
 - 50-59 Years
 - 60-69 Years
 - 70-79 Years
 - 80+ Years

No SRA-level rate data
available for this section.