

# MAP ATLAS

## Acute Myocardial Infarction San Diego County, 2020

---

APRIL 2023

---

County of San Diego | Health and Human  
Services Agency | Public Health Services |  
Community Health Statistics Unit



## Data Sources - San Diego County, 2020

**Death\*** is based on underlying cause of death among San Diego County residents. Rates calculated per 100,000 residents. Rates not calculated for < 11 cases. Maps not produced for conditions/outcomes with no SRA-level rates. Some sections may have no maps.

Sources: California Department of Public Health, Center for Health Statistics, Office of Health Information and Research, Vital Records Business Intelligence System (VRBIS), 2020. ***The COVID-19 pandemic was associated with increases in all-cause mortality. COVID-19 deaths have affected the patterns of mortality including age-adjusted measures.*** SANDAG: San Diego Association of Governments (SANDAG) Population Estimates, 2020 (v09/2022). ***Population estimates for 2020 were derived using the 2010 Census and data should be considered preliminary.***

\*For substance/drug overdoses, death rate is based on the multiple/contributing cause of death among San Diego County residents.

**Hospitalization** refers to treatment at a general acute care facility in San Diego County. Rates calculated per 100,000 residents. Rates not calculated for < 11 cases. Maps not produced for conditions/outcomes with no SRA-level rates. Some sections may have no maps.

Sources: California Department of Health Care Access and Information (HCAI), Patient Discharge Database, 2020. San Diego Association of Governments (SANDAG) Population Estimates, 2020 (v09/2022). ***Population estimates for 2020 were derived using the 2010 Census and data should be considered preliminary.***

**Emergency Department (ED) Discharge** refers to treatment at an ED facility in San Diego County.

Rates calculated per 100,000 residents. Rates not calculated for < 11 cases. Maps not produced for conditions/outcomes with no SRA-level rates. Some sections may have no maps.

Sources: California Department of Health Care Access and Information (HCAI), Emergency Department Discharge Database, 2020. San Diego Association of Governments (SANDAG) Population Estimates, 2020 (v09/2022). ***Population estimates for 2020 were derived using the 2010 Census and data should be considered preliminary.***

**In-Patient Treatment (IPT)** refers to treatment at a psychiatric care or chemical rehabilitation facility in San Diego County. Rates calculated per 100,000 residents. Rates not calculated for < 11 cases. Maps not produced for conditions/outcomes with no SRA-level rates. Some sections may have no maps.

Sources: California Department of Health Care Access and Information (HCAI), Patient Discharge Database, 2020. San Diego Association of Governments (SANDAG) Population Estimates, 2020 (v09/2022). ***Population estimates for 2020 were derived using the 2010 Census and data should be considered preliminary.***

Maps & Analysis by County of San Diego, Health and Human Services Agency, Public Health Services, Community Health Statistics Unit. Contact 619.692.6672. March 2023.

[https://www.sandiegocounty.gov/hhsa/programs/phs/community\\_health\\_statistics/LiveWellSD.org](https://www.sandiegocounty.gov/hhsa/programs/phs/community_health_statistics/LiveWellSD.org).

For more detailed explanation of geography, methods, and sources, please refer to CHSU's [2020 Community Profiles Data Guide and Data Dictionary Dashboards](#).

# Table of Contents

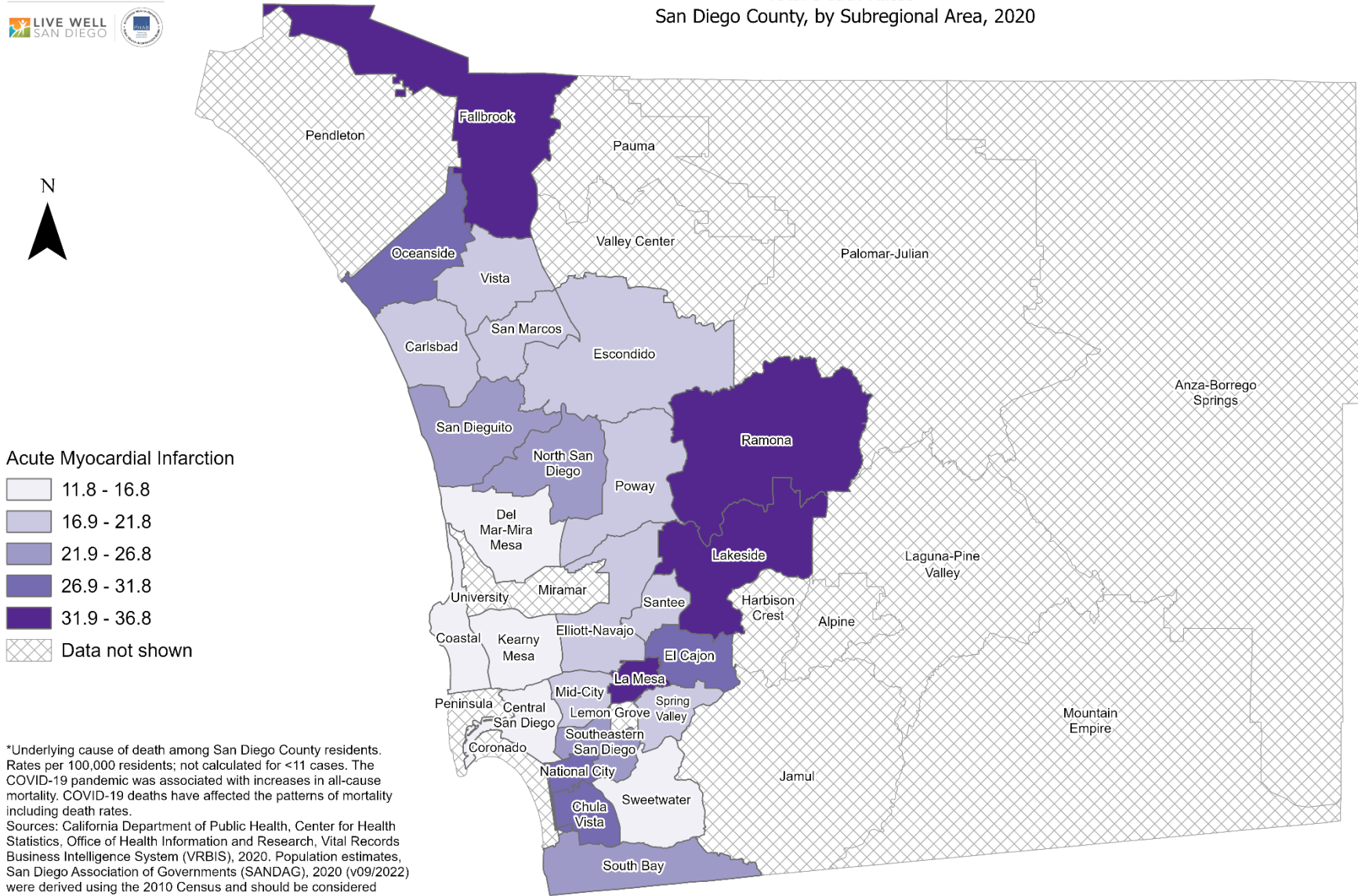
Section 1: Deaths .....	1
Section 2: Hospitalizations .....	7
Section 3: Emergency Department (ED) Discharges.....	18
Section 4: In-Patient Treatments (IPT).....	23

# SECTION 1

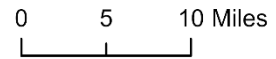
## **Death Rates Among San Diego County Residents by Demographics, 2020:**

- Total Rate
- Race/Ethnicity
  - Asian/Pacific Islander (API)
  - Black
  - Hispanic
  - White
- Age Group
  - 0-9 Years
  - 10-19 Years
  - 20-29 Years
  - 30-39 Years
  - 40-49 Years
  - 50-59 Years
  - 60-69 Years
  - 70-79 Years
  - 80+ Years

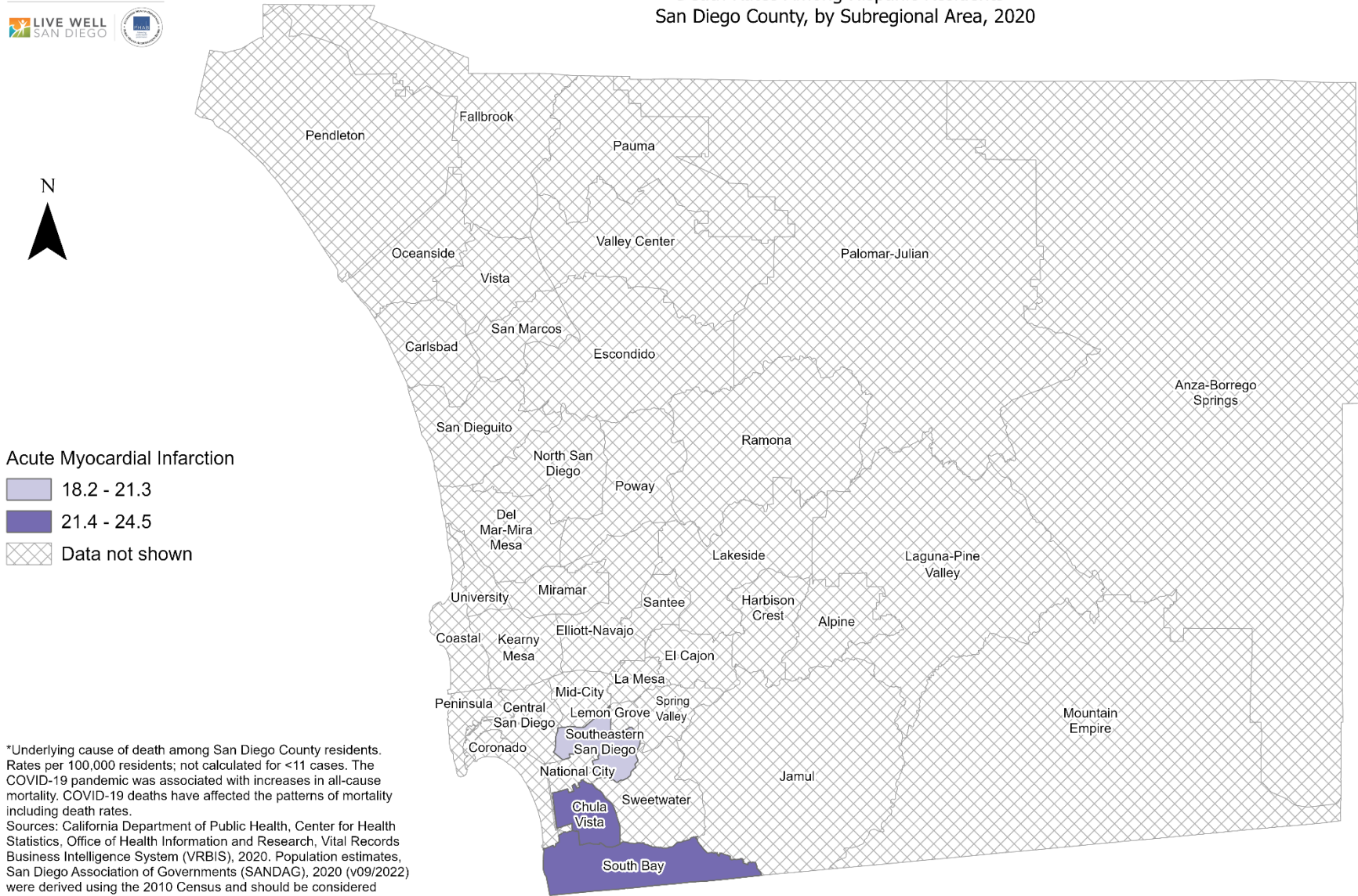
### Total Death Rates\* San Diego County, by Subregional Area, 2020



\*Underlying cause of death among San Diego County residents. Rates per 100,000 residents; not calculated for <11 cases. The COVID-19 pandemic was associated with increases in all-cause mortality. COVID-19 deaths have affected the patterns of mortality including death rates.  
Sources: California Department of Public Health, Center for Health Statistics, Office of Health Information and Research, Vital Records Business Intelligence System (VRBIS), 2020. Population estimates, San Diego Association of Governments (SANDAG), 2020 (v09/2022) were derived using the 2010 Census and should be considered preliminary.



### Death Rates Among Hispanic Residents\* San Diego County, by Subregional Area, 2020

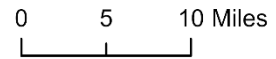


**Acute Myocardial Infarction**

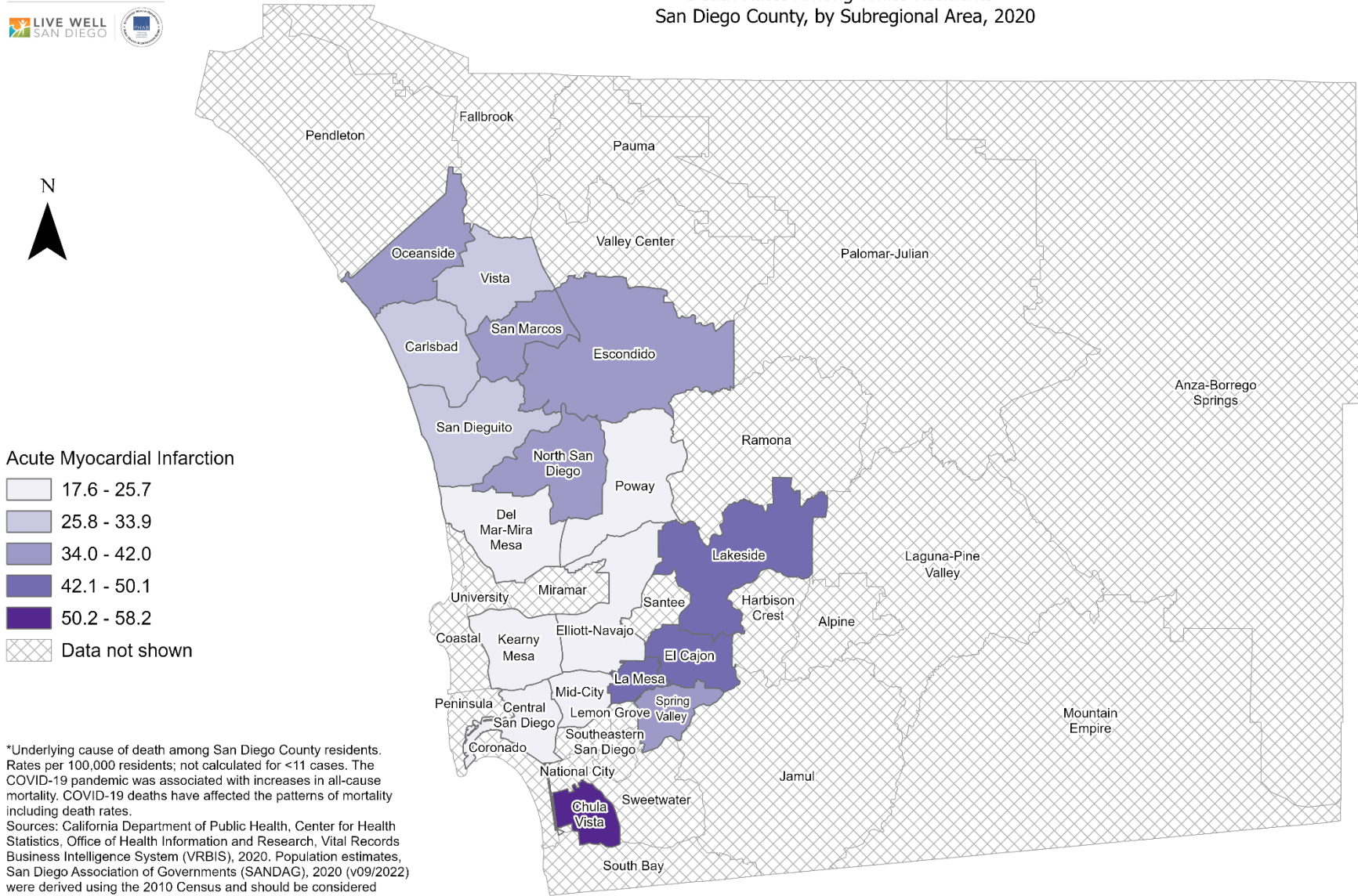
- 18.2 - 21.3
- 21.4 - 24.5
- Data not shown

\*Underlying cause of death among San Diego County residents. Rates per 100,000 residents; not calculated for <11 cases. The COVID-19 pandemic was associated with increases in all-cause mortality. COVID-19 deaths have affected the patterns of mortality including death rates.  
Sources: California Department of Public Health, Center for Health Statistics, Office of Health Information and Research, Vital Records Business Intelligence System (VRBIS), 2020. Population estimates, San Diego Association of Governments (SANDAG), 2020 (v09/2022) were derived using the 2010 Census and should be considered preliminary.

Maps & Analysis by County of San Diego, Health and Human Services Agency, Public Health Services, Community Health Statistics Unit. Contact 619.692.6672. [https://www.sandiegocounty.gov/hhsa/programs/phs/community\\_health\\_statistics/](https://www.sandiegocounty.gov/hhsa/programs/phs/community_health_statistics/). March, 2023. LiveWellSD.org.

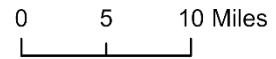


### Death Rates Among White Residents\* San Diego County, by Subregional Area, 2020



\*Underlying cause of death among San Diego County residents. Rates per 100,000 residents; not calculated for <11 cases. The COVID-19 pandemic was associated with increases in all-cause mortality. COVID-19 deaths have affected the patterns of mortality including death rates.  
Sources: California Department of Public Health, Center for Health Statistics, Office of Health Information and Research, Vital Records Business Intelligence System (VRBIS), 2020. Population estimates, San Diego Association of Governments (SANDAG), 2020 (v09/2022) were derived using the 2010 Census and should be considered preliminary.

Maps & Analysis by County of San Diego, Health and Human Services Agency, Public Health Services, Community Health Statistics Unit. Contact 619.692.6672. [https://www.sandiegocounty.gov/hhsa/programs/phs/community\\_health\\_statistics/](https://www.sandiegocounty.gov/hhsa/programs/phs/community_health_statistics/). March, 2023. LiveWellSD.org.

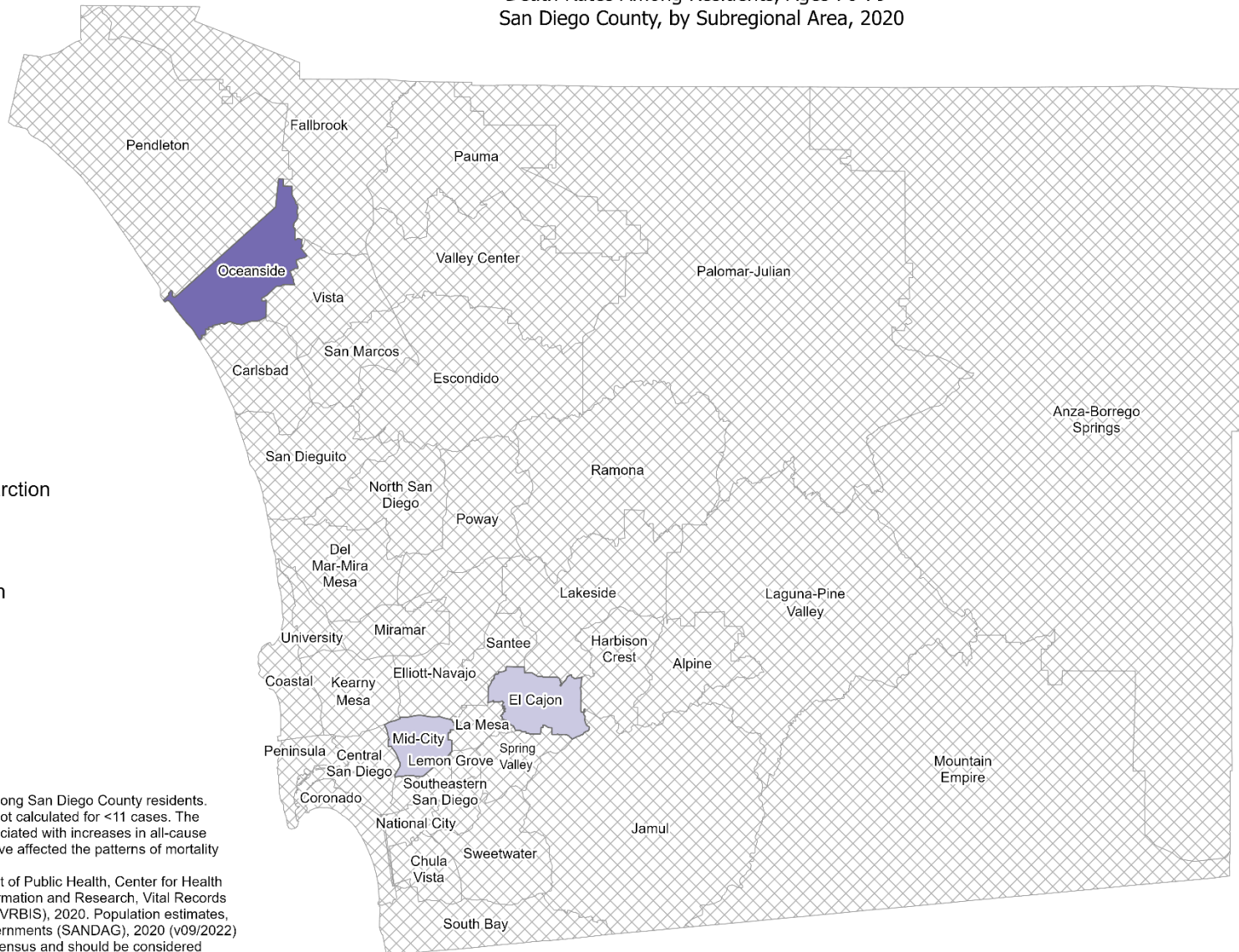


### Death Rates Among Residents, Ages 70-79\* San Diego County, by Subregional Area, 2020



#### Acute Myocardial Infarction

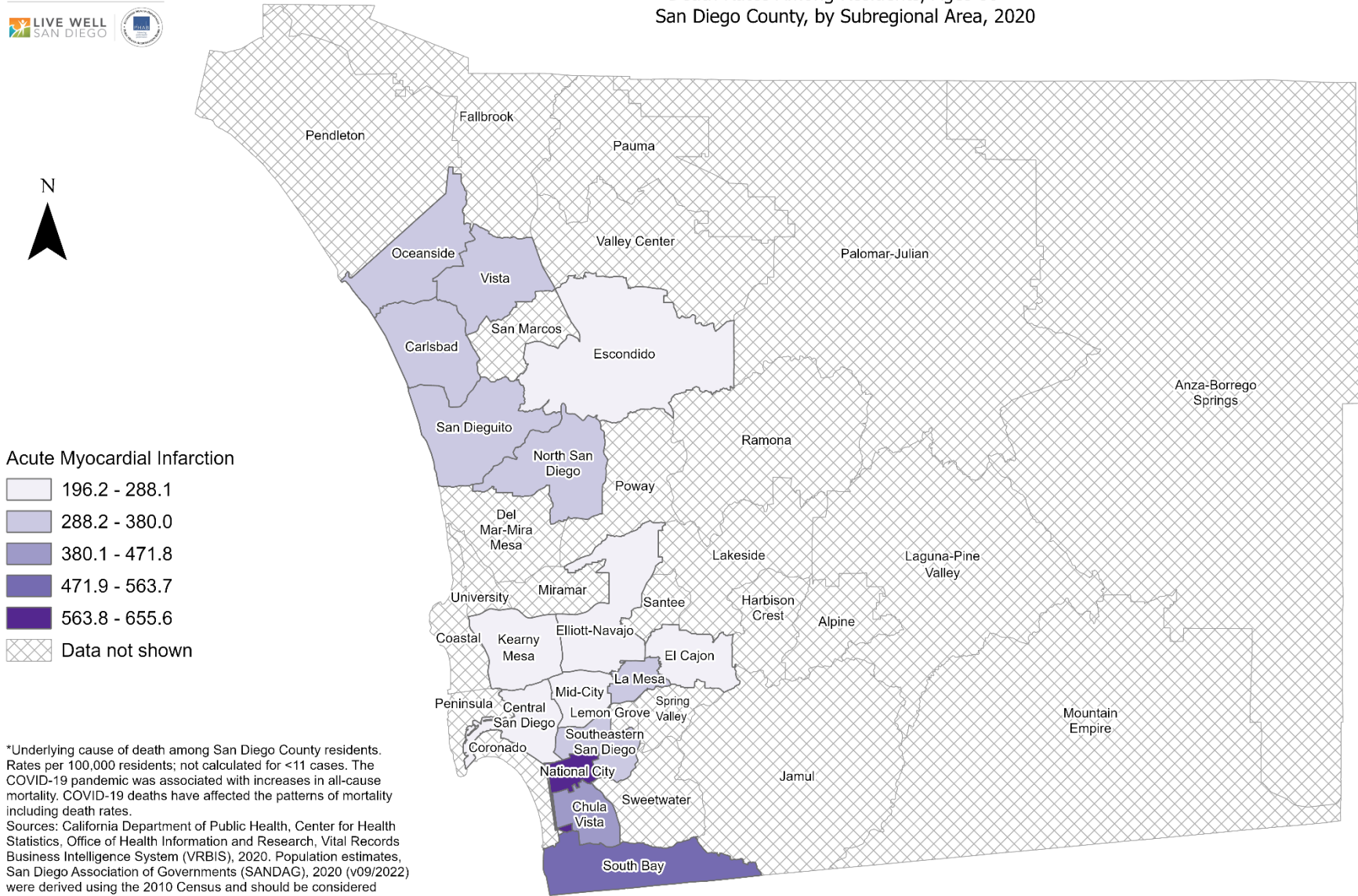
- 115.9 - 123.7
- 123.8 - 131.5
- Data not shown



\*Underlying cause of death among San Diego County residents. Rates per 100,000 residents; not calculated for <11 cases. The COVID-19 pandemic was associated with increases in all-cause mortality. COVID-19 deaths have affected the patterns of mortality including death rates.  
Sources: California Department of Public Health, Center for Health Statistics, Office of Health Information and Research, Vital Records Business Intelligence System (VRBIS), 2020. Population estimates, San Diego Association of Governments (SANDAG), 2020 (v09/2022) were derived using the 2010 Census and should be considered preliminary.

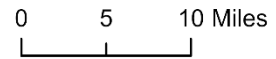


### Death Rates Among Residents, Ages 80+\* San Diego County, by Subregional Area, 2020



\*Underlying cause of death among San Diego County residents. Rates per 100,000 residents; not calculated for <11 cases. The COVID-19 pandemic was associated with increases in all-cause mortality. COVID-19 deaths have affected the patterns of mortality including death rates.  
Sources: California Department of Public Health, Center for Health Statistics, Office of Health Information and Research, Vital Records Business Intelligence System (VRBIS), 2020. Population estimates, San Diego Association of Governments (SANDAG), 2020 (v09/2022) were derived using the 2010 Census and should be considered preliminary.

Maps & Analysis by County of San Diego, Health and Human Services Agency, Public Health Services, Community Health Statistics Unit. Contact 619.692.6672. [https://www.sandiegocounty.gov/hhsa/programs/phs/community\\_health\\_statistics/](https://www.sandiegocounty.gov/hhsa/programs/phs/community_health_statistics/). March, 2023. LiveWellSD.org.

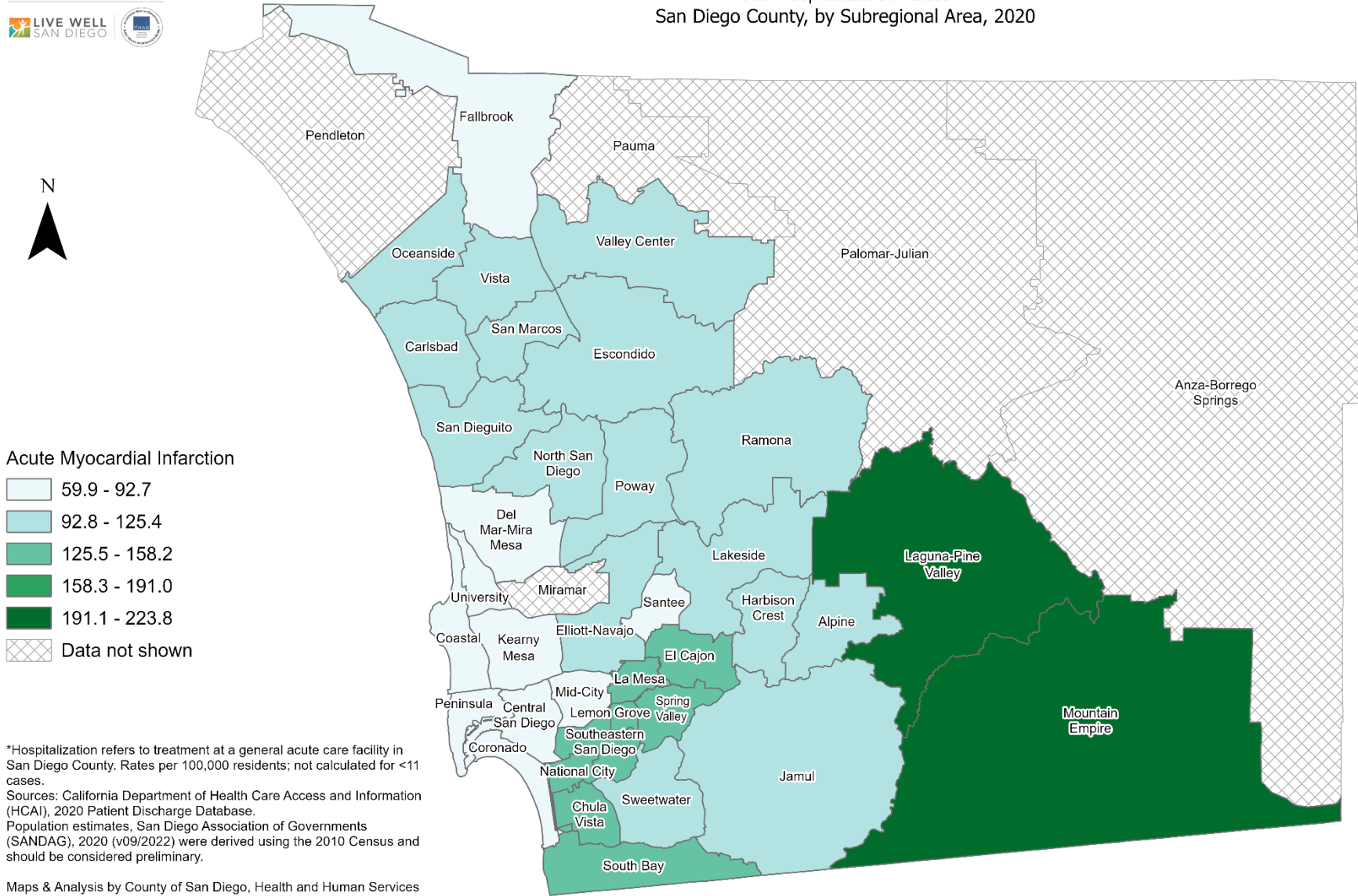


# SECTION 2

## **Hospitalization Rates Among San Diego County Residents by Demographics, 2020:**

- Total Rate
- Race/Ethnicity
  - Asian/Pacific Islander (API)
  - Black
  - Hispanic
  - White
- Age Group
  - 0-9 Years
  - 10-19 Years
  - 20-29 Years
  - 30-39 Years
  - 40-49 Years
  - 50-59 Years
  - 60-69 Years
  - 70-79 Years
  - 80+ Years

### Total Hospitalization Rates\* San Diego County, by Subregional Area, 2020

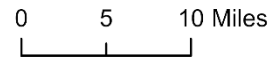


**Acute Myocardial Infarction**

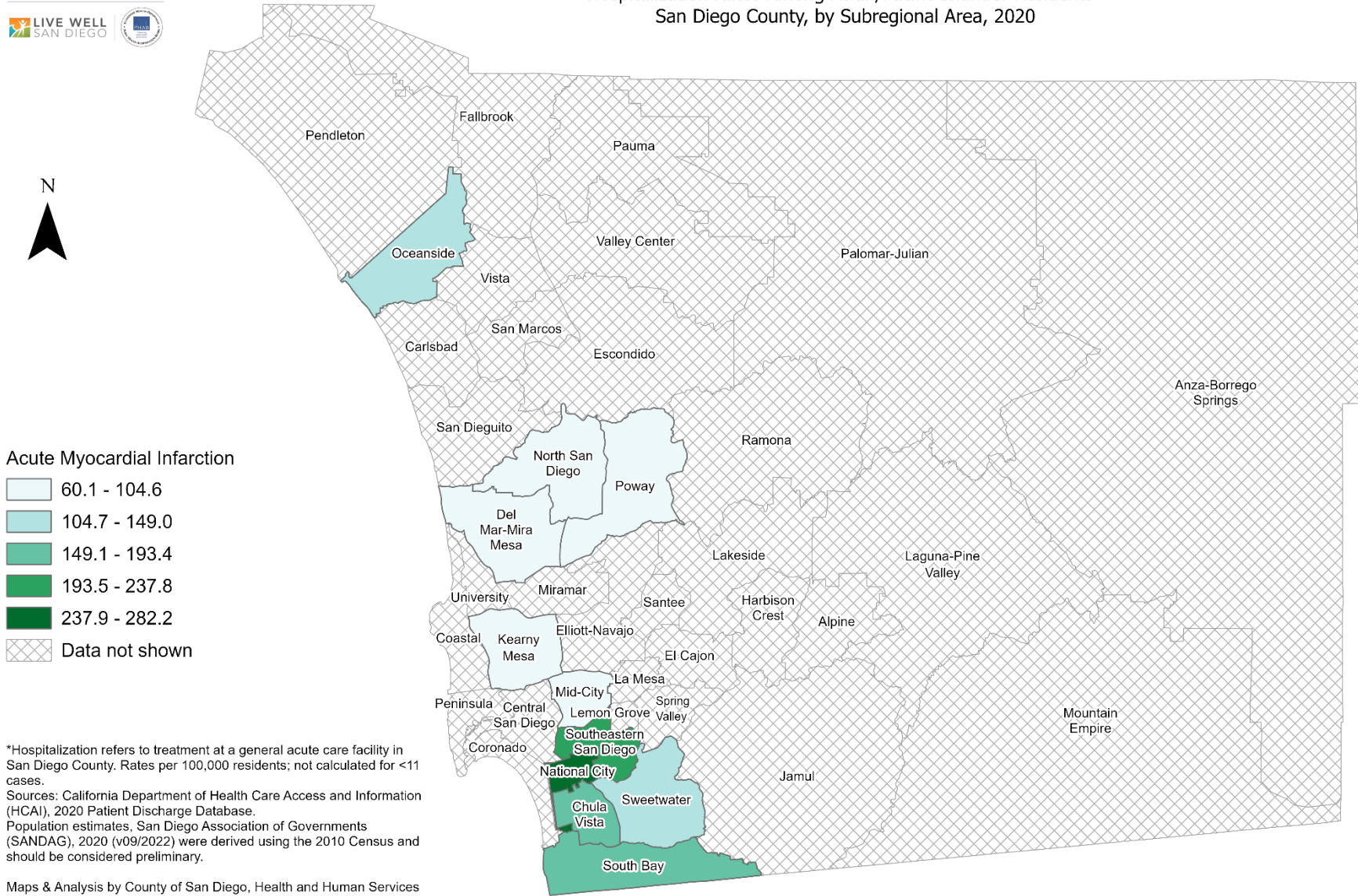
- 59.9 - 92.7
- 92.8 - 125.4
- 125.5 - 158.2
- 158.3 - 191.0
- 191.1 - 223.8
- Data not shown

\*Hospitalization refers to treatment at a general acute care facility in San Diego County. Rates per 100,000 residents; not calculated for <11 cases.  
Sources: California Department of Health Care Access and Information (HCAI), 2020 Patient Discharge Database.  
Population estimates, San Diego Association of Governments (SANDAG), 2020 (v09/2022) were derived using the 2010 Census and should be considered preliminary.

Maps & Analysis by County of San Diego, Health and Human Services Agency, Public Health Services, Community Health Statistics Unit.  
Contact 619.692.6672. [https://www.sandiegocounty.gov/hhsa/programs/phs/community\\_health\\_statistics/](https://www.sandiegocounty.gov/hhsa/programs/phs/community_health_statistics/).  
March, 2023.  
LiveWellSD.org.



### Hospitalization Rates Among Asian/Pacific Islander Residents\* San Diego County, by Subregional Area, 2020

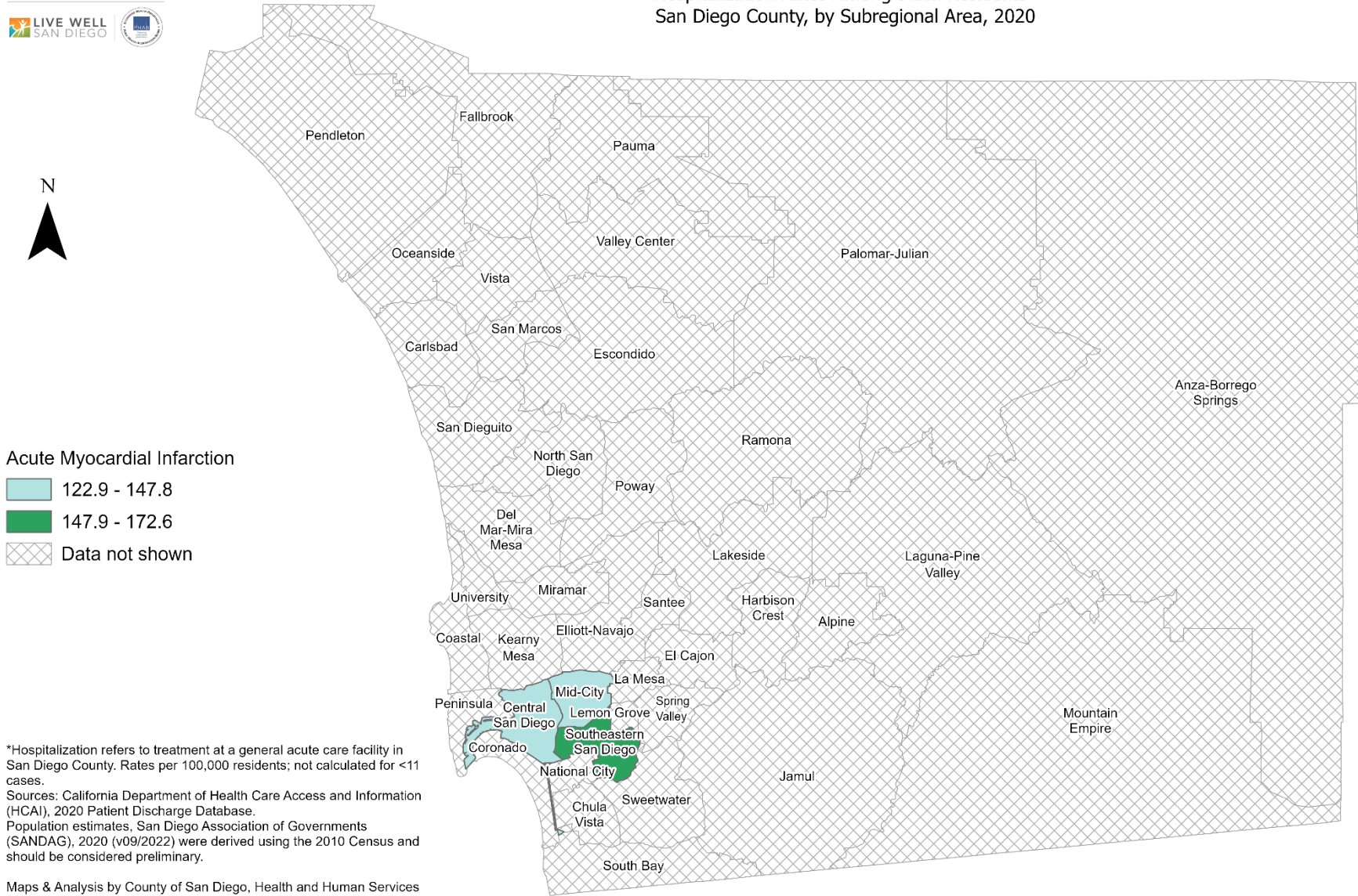


\*Hospitalization refers to treatment at a general acute care facility in San Diego County. Rates per 100,000 residents; not calculated for <11 cases.  
Sources: California Department of Health Care Access and Information (HCAI), 2020 Patient Discharge Database.  
Population estimates, San Diego Association of Governments (SANDAG), 2020 (v09/2022) were derived using the 2010 Census and should be considered preliminary.

Maps & Analysis by County of San Diego, Health and Human Services Agency, Public Health Services, Community Health Statistics Unit.  
Contact 619.692.6672. [https://www.sandiegocounty.gov/hhsa/programs/phs/community\\_health\\_statistics/](https://www.sandiegocounty.gov/hhsa/programs/phs/community_health_statistics/).  
March, 2023.  
LiveWellSD.org.



### Hospitalization Rates Among Black Residents\* San Diego County, by Subregional Area, 2020

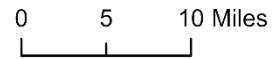


**Acute Myocardial Infarction**

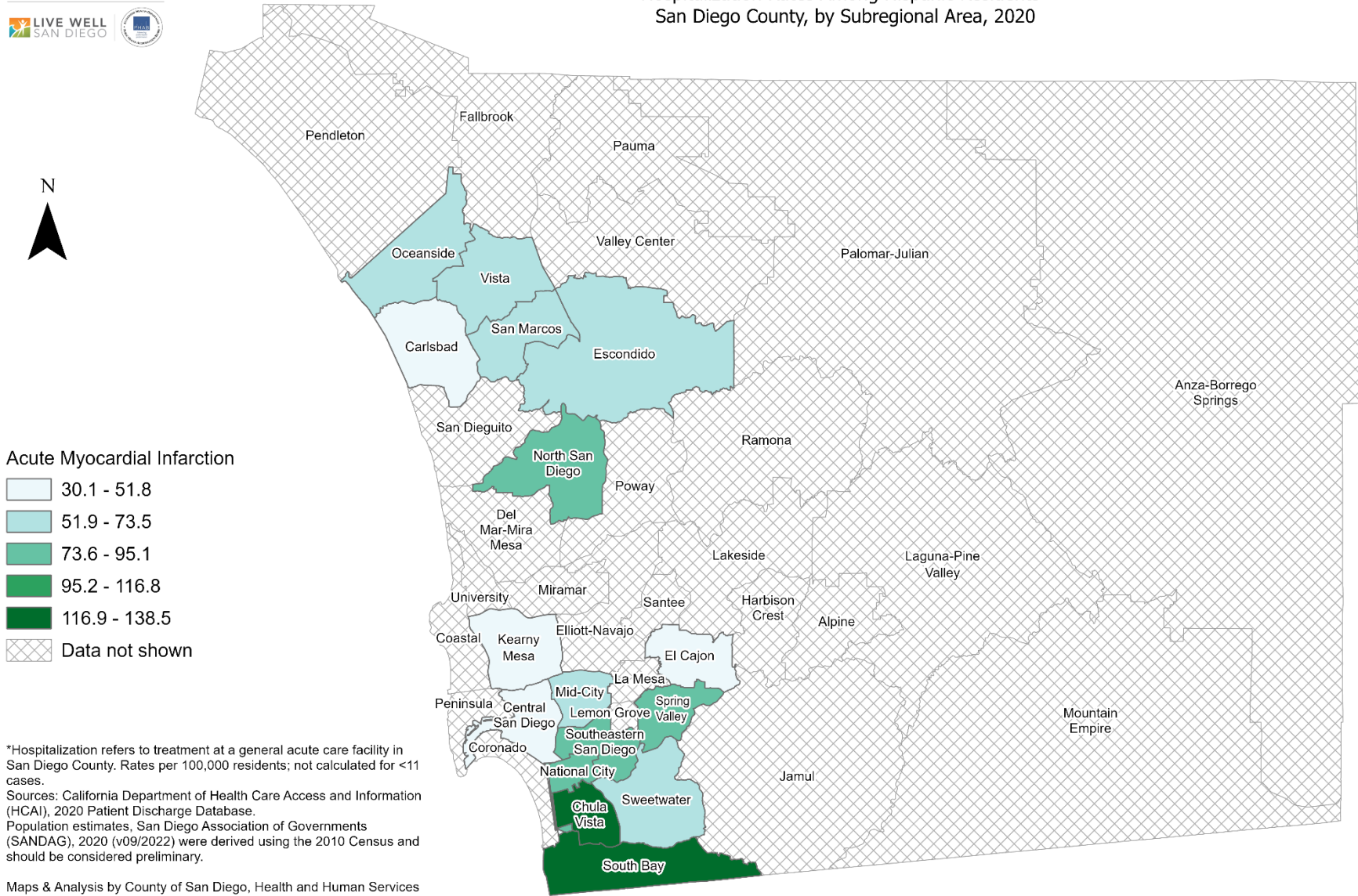
- 122.9 - 147.8
- 147.9 - 172.6
- Data not shown

\*Hospitalization refers to treatment at a general acute care facility in San Diego County. Rates per 100,000 residents; not calculated for <11 cases.  
Sources: California Department of Health Care Access and Information (HCAI), 2020 Patient Discharge Database.  
Population estimates, San Diego Association of Governments (SANDAG), 2020 (v09/2022) were derived using the 2010 Census and should be considered preliminary.

Maps & Analysis by County of San Diego, Health and Human Services Agency, Public Health Services, Community Health Statistics Unit.  
Contact 619.692.6672. [https://www.sandiegocounty.gov/hhsa/programs/phs/community\\_health\\_statistics/](https://www.sandiegocounty.gov/hhsa/programs/phs/community_health_statistics/).  
March, 2023.  
LiveWellSD.org.



### Hospitalization Rates Among Hispanic Residents\* San Diego County, by Subregional Area, 2020

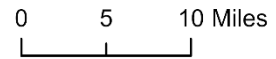


**Acute Myocardial Infarction**

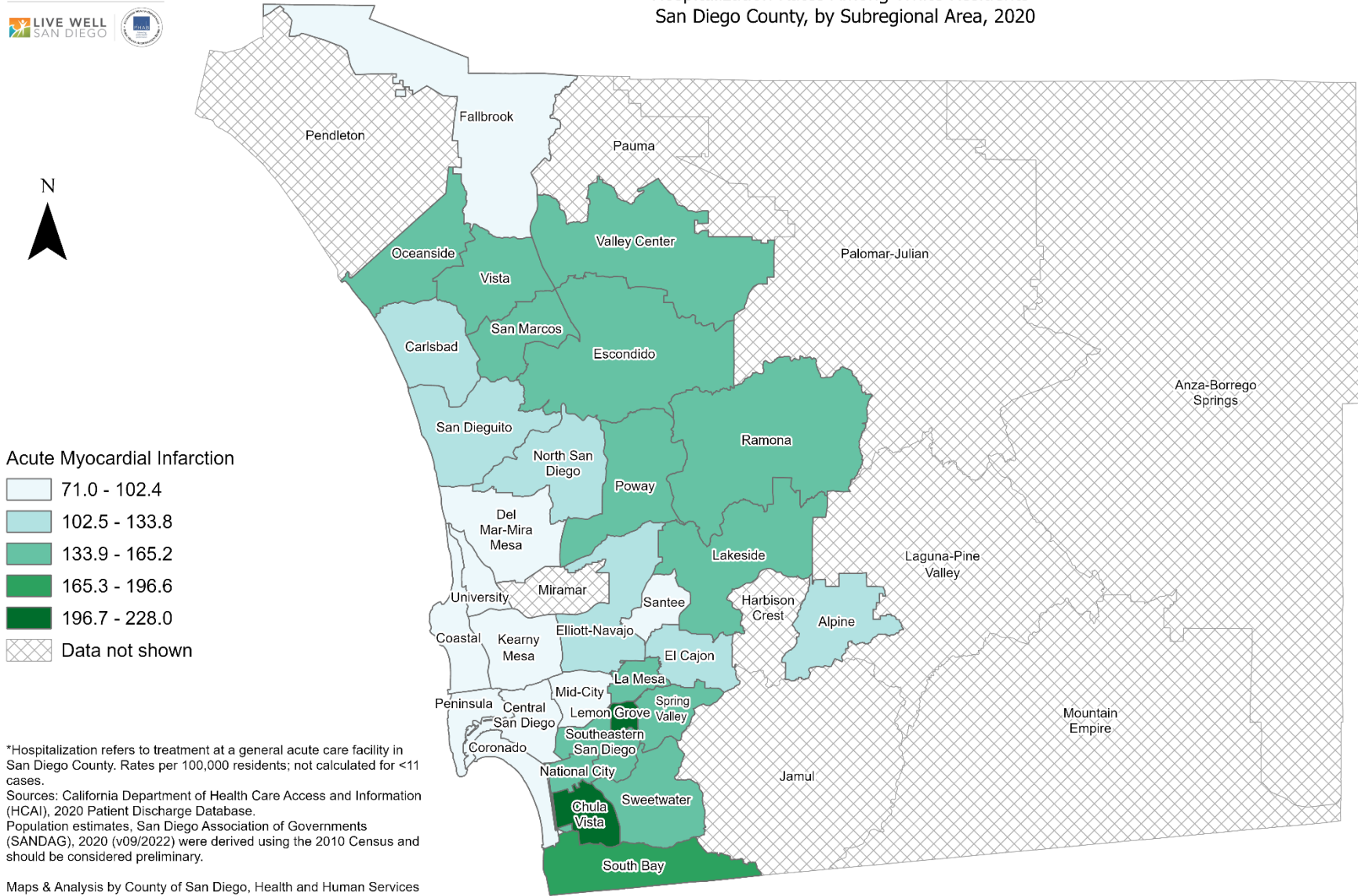
- 30.1 - 51.8
- 51.9 - 73.5
- 73.6 - 95.1
- 95.2 - 116.8
- 116.9 - 138.5
- Data not shown

\*Hospitalization refers to treatment at a general acute care facility in San Diego County. Rates per 100,000 residents; not calculated for <11 cases.  
Sources: California Department of Health Care Access and Information (HCAI), 2020 Patient Discharge Database.  
Population estimates, San Diego Association of Governments (SANDAG), 2020 (v09/2022) were derived using the 2010 Census and should be considered preliminary.

Maps & Analysis by County of San Diego, Health and Human Services Agency, Public Health Services, Community Health Statistics Unit.  
Contact 619.692.6672. [https://www.sandiegocounty.gov/hhsa/programs/phs/community\\_health\\_statistics/](https://www.sandiegocounty.gov/hhsa/programs/phs/community_health_statistics/).  
March, 2023.  
[LiveWellSD.org](http://LiveWellSD.org).



### Hospitalization Rates Among White Residents\* San Diego County, by Subregional Area, 2020

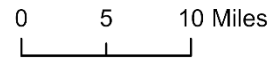


**Acute Myocardial Infarction**

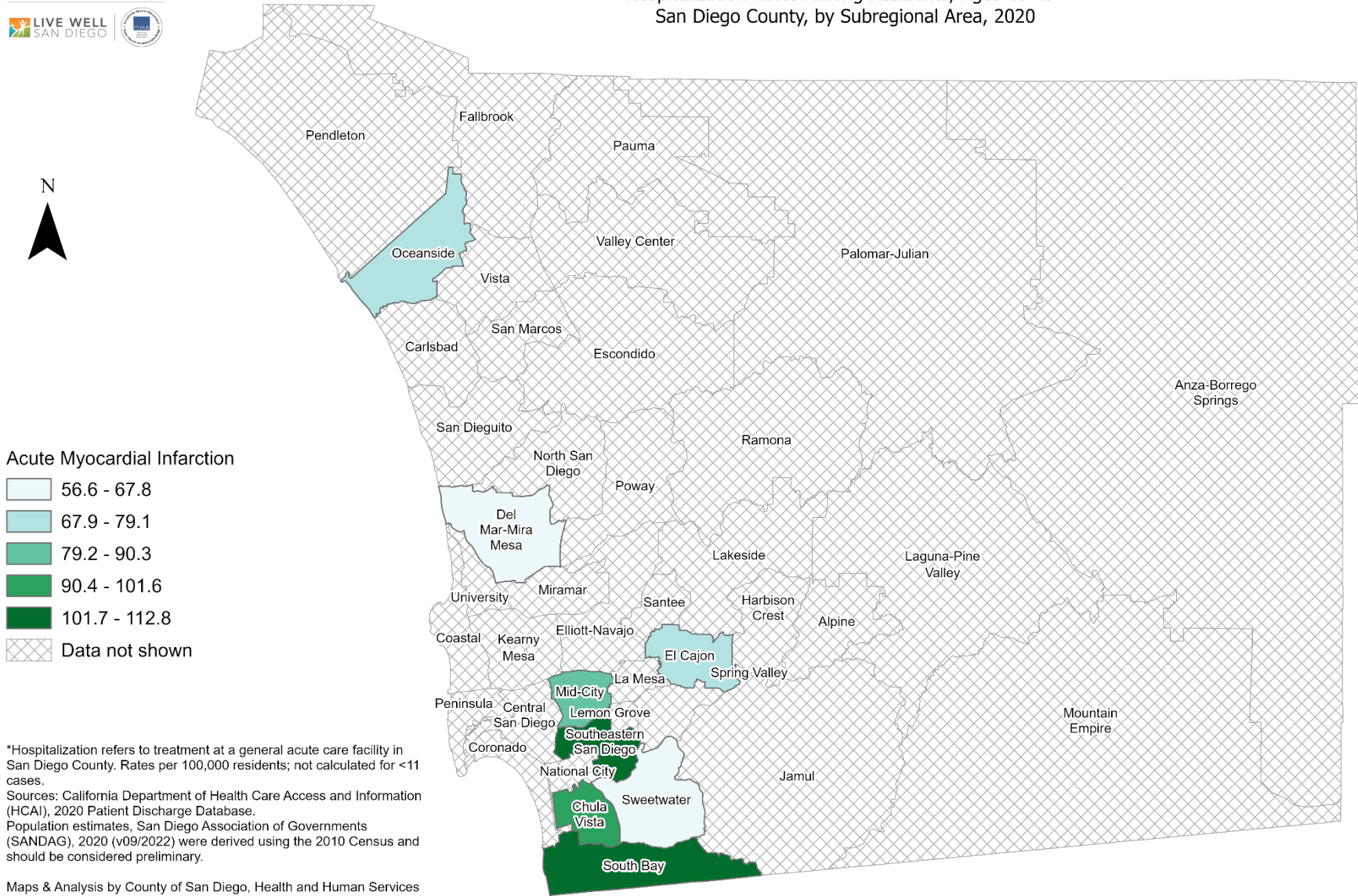
- 71.0 - 102.4
- 102.5 - 133.8
- 133.9 - 165.2
- 165.3 - 196.6
- 196.7 - 228.0
- Data not shown

\*Hospitalization refers to treatment at a general acute care facility in San Diego County. Rates per 100,000 residents; not calculated for <11 cases.  
Sources: California Department of Health Care Access and Information (HCAI), 2020 Patient Discharge Database.  
Population estimates, San Diego Association of Governments (SANDAG), 2020 (v09/2022) were derived using the 2010 Census and should be considered preliminary.

Maps & Analysis by County of San Diego, Health and Human Services Agency, Public Health Services, Community Health Statistics Unit.  
Contact 619.692.6672. [https://www.sandiegocounty.gov/hhsa/programs/phs/community\\_health\\_statistics/](https://www.sandiegocounty.gov/hhsa/programs/phs/community_health_statistics/).  
March, 2023.  
[LiveWellSD.org](http://LiveWellSD.org).



### Hospitalization Rates Among Residents, Ages 40-49\* San Diego County, by Subregional Area, 2020

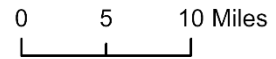


**Acute Myocardial Infarction**

- 56.6 - 67.8
- 67.9 - 79.1
- 79.2 - 90.3
- 90.4 - 101.6
- 101.7 - 112.8
- Data not shown

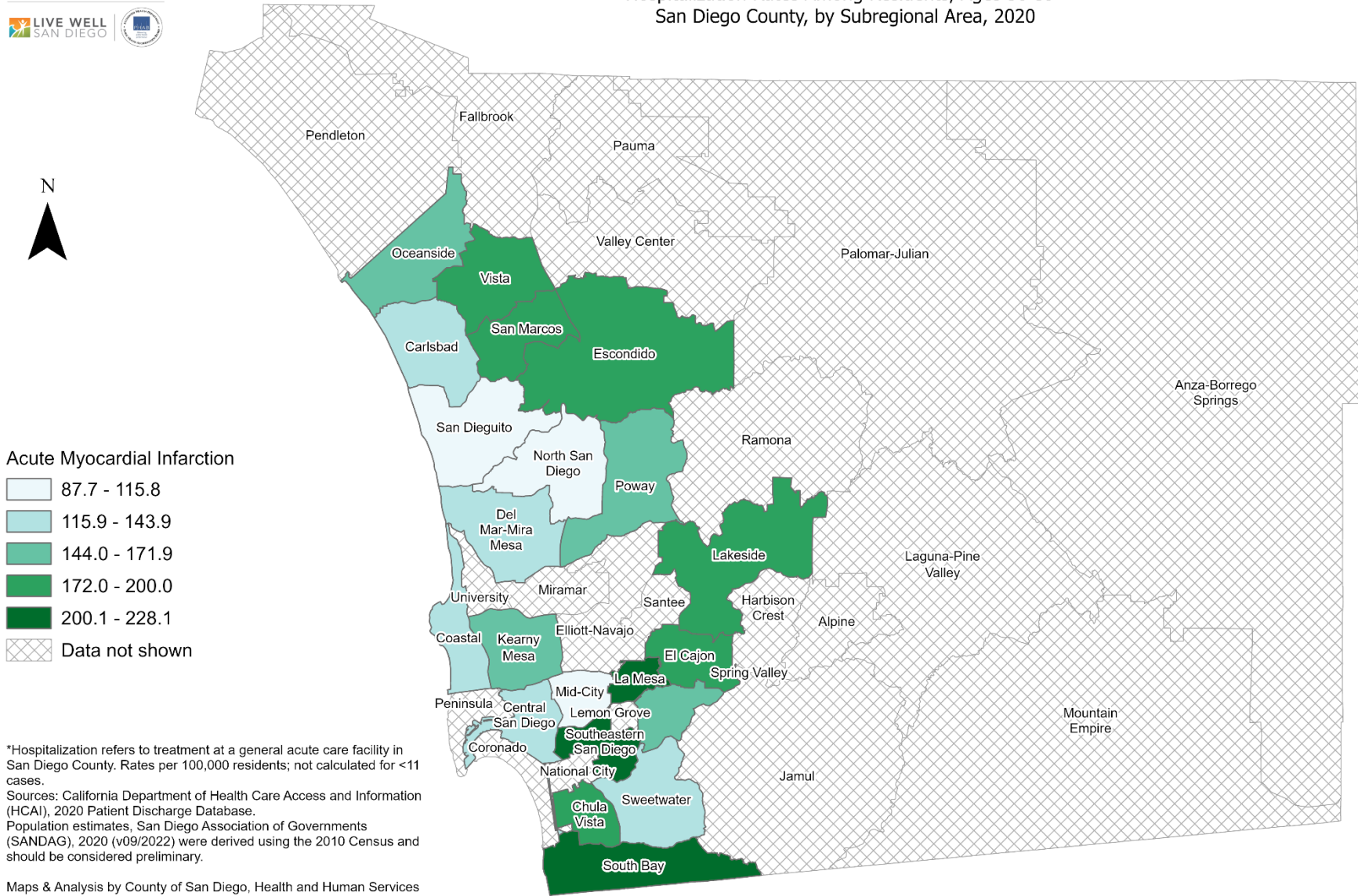
\*Hospitalization refers to treatment at a general acute care facility in San Diego County. Rates per 100,000 residents; not calculated for <11 cases.  
Sources: California Department of Health Care Access and Information (HCAI), 2020 Patient Discharge Database.  
Population estimates, San Diego Association of Governments (SANDAG), 2020 (v09/2022) were derived using the 2010 Census and should be considered preliminary.

Maps & Analysis by County of San Diego, Health and Human Services Agency, Public Health Services, Community Health Statistics Unit.  
Contact 619.692.6672. [https://www.sandiegocounty.gov/hhsa/programs/phs/community\\_health\\_statistics/](https://www.sandiegocounty.gov/hhsa/programs/phs/community_health_statistics/).  
March, 2023.  
LiveWellSD.org.





### Hospitalization Rates Among Residents, Ages 50-59\* San Diego County, by Subregional Area, 2020

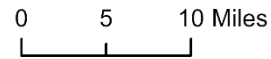


**Acute Myocardial Infarction**

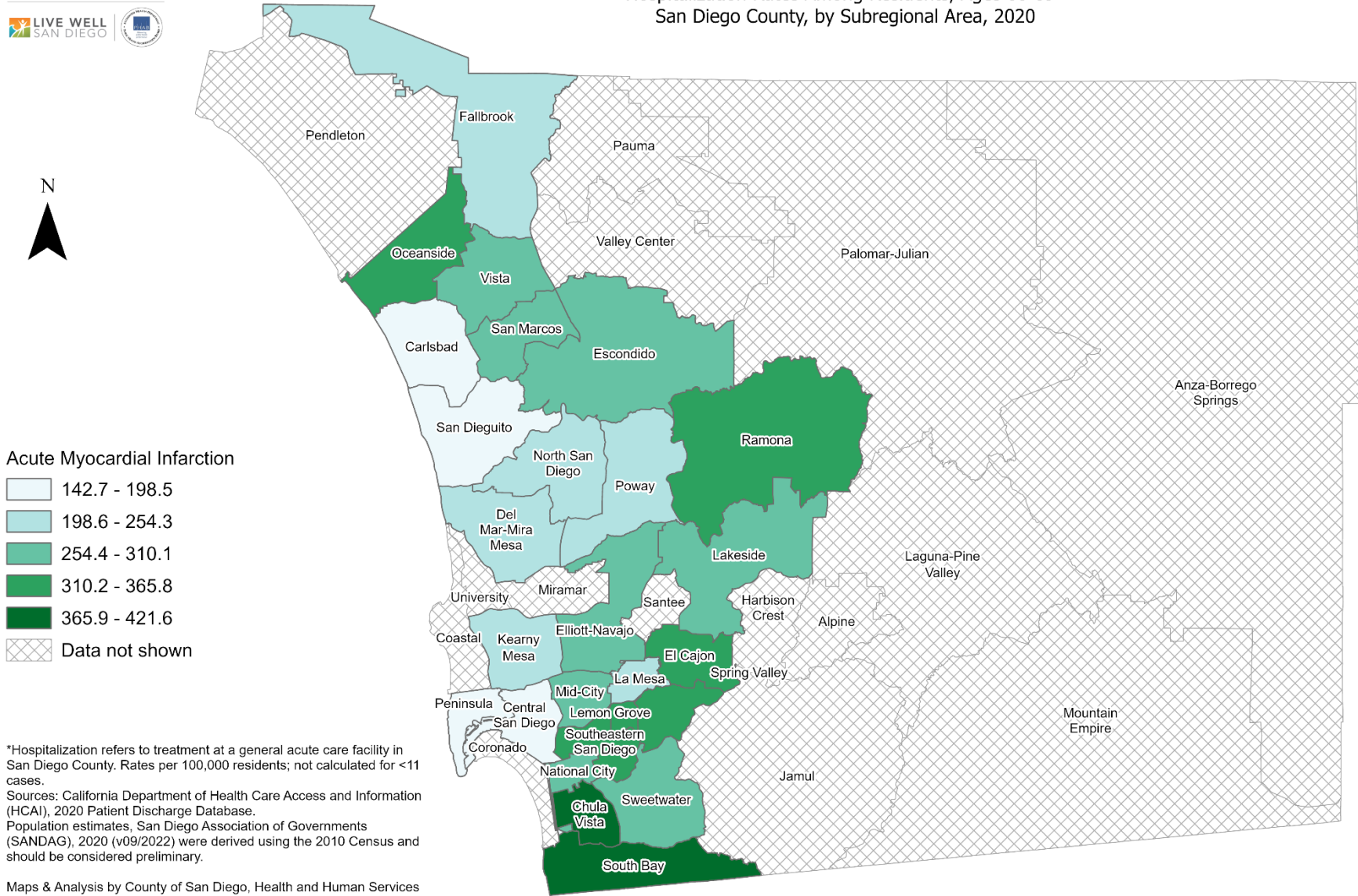
- 87.7 - 115.8
- 115.9 - 143.9
- 144.0 - 171.9
- 172.0 - 200.0
- 200.1 - 228.1
- Data not shown

\*Hospitalization refers to treatment at a general acute care facility in San Diego County. Rates per 100,000 residents; not calculated for <11 cases.  
Sources: California Department of Health Care Access and Information (HCAI), 2020 Patient Discharge Database.  
Population estimates, San Diego Association of Governments (SANDAG), 2020 (v09/2022) were derived using the 2010 Census and should be considered preliminary.

Maps & Analysis by County of San Diego, Health and Human Services Agency, Public Health Services, Community Health Statistics Unit.  
Contact 619.692.6672. [https://www.sandiegocounty.gov/hhsa/programs/phs/community\\_health\\_statistics/](https://www.sandiegocounty.gov/hhsa/programs/phs/community_health_statistics/).  
March, 2023.  
[LiveWellSD.org](http://LiveWellSD.org).



### Hospitalization Rates Among Residents, Ages 60-69\* San Diego County, by Subregional Area, 2020

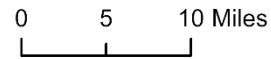


**Acute Myocardial Infarction**

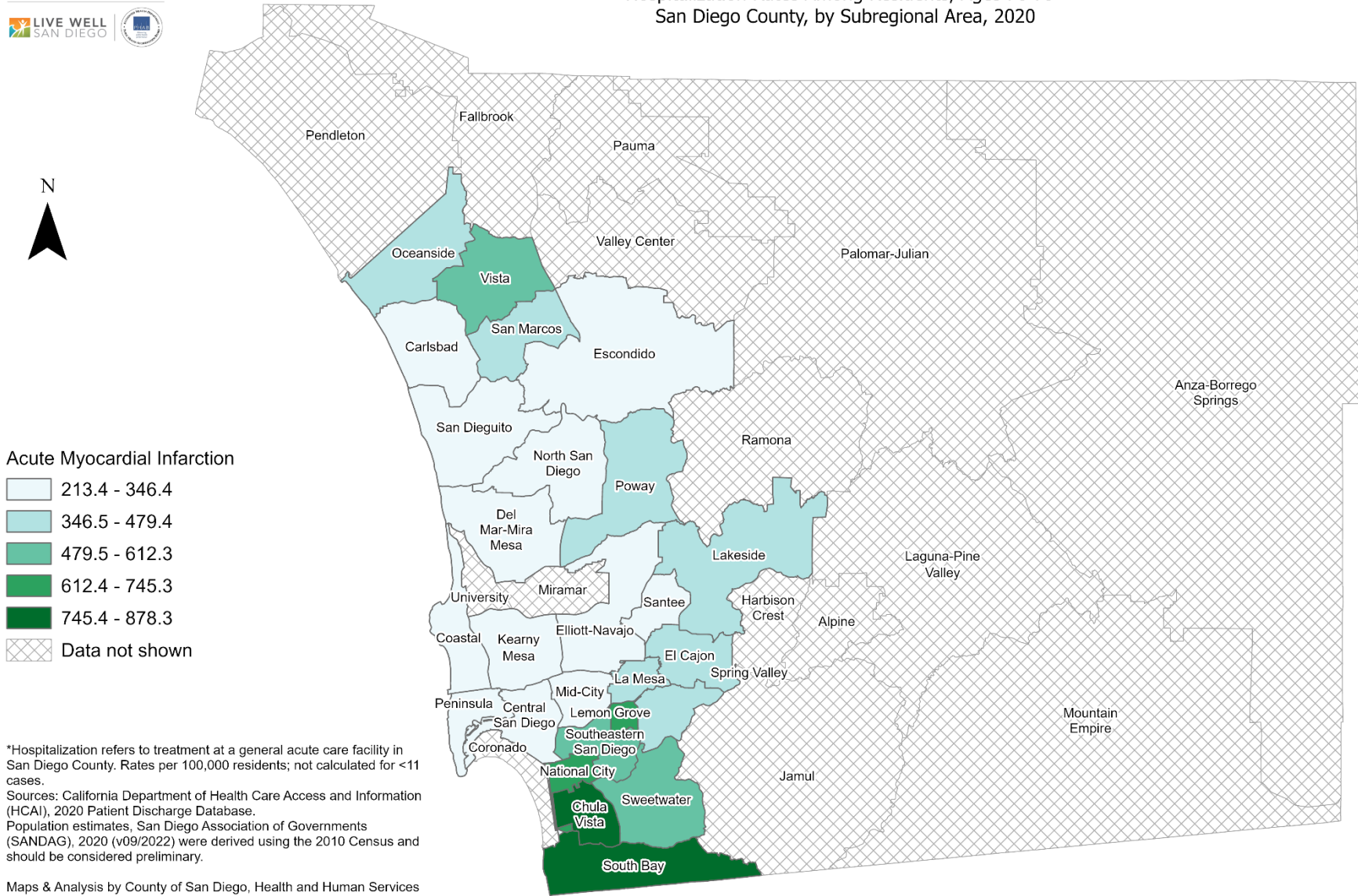
- 142.7 - 198.5
- 198.6 - 254.3
- 254.4 - 310.1
- 310.2 - 365.8
- 365.9 - 421.6
- Data not shown

\*Hospitalization refers to treatment at a general acute care facility in San Diego County. Rates per 100,000 residents; not calculated for <11 cases.  
Sources: California Department of Health Care Access and Information (HCAI), 2020 Patient Discharge Database.  
Population estimates, San Diego Association of Governments (SANDAG), 2020 (v09/2022) were derived using the 2010 Census and should be considered preliminary.

Maps & Analysis by County of San Diego, Health and Human Services Agency, Public Health Services, Community Health Statistics Unit.  
Contact 619.692.6672. [https://www.sandiegocounty.gov/hhsa/programs/phs/community\\_health\\_statistics/](https://www.sandiegocounty.gov/hhsa/programs/phs/community_health_statistics/).  
March, 2023.  
[LiveWellSD.org](http://LiveWellSD.org).



### Hospitalization Rates Among Residents, Ages 70-79\* San Diego County, by Subregional Area, 2020

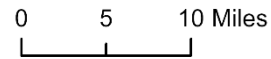


**Acute Myocardial Infarction**

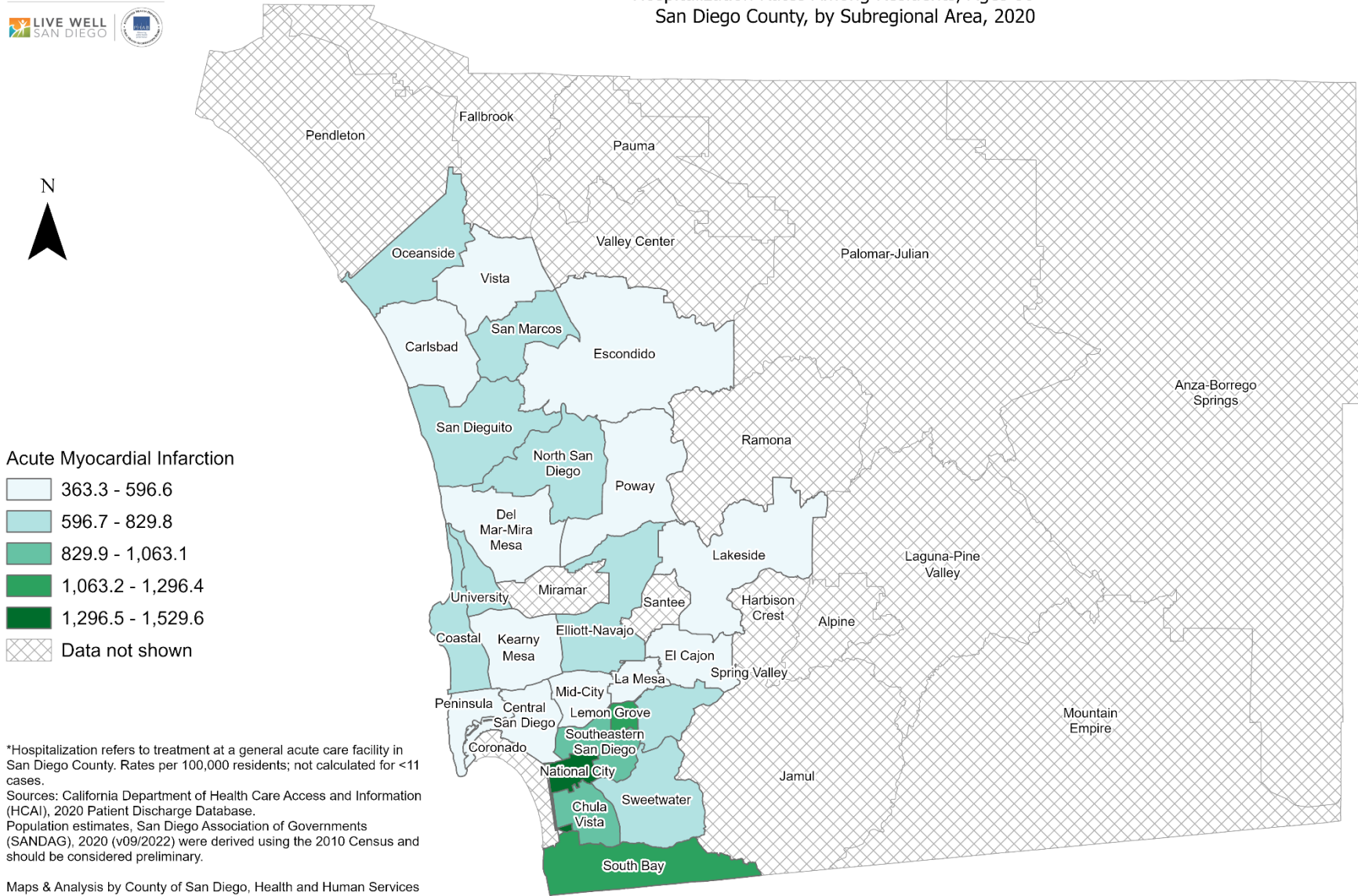
- 213.4 - 346.4
- 346.5 - 479.4
- 479.5 - 612.3
- 612.4 - 745.3
- 745.4 - 878.3
- Data not shown

\*Hospitalization refers to treatment at a general acute care facility in San Diego County. Rates per 100,000 residents; not calculated for <11 cases.  
Sources: California Department of Health Care Access and Information (HCAI), 2020 Patient Discharge Database.  
Population estimates, San Diego Association of Governments (SANDAG), 2020 (v09/2022) were derived using the 2010 Census and should be considered preliminary.

Maps & Analysis by County of San Diego, Health and Human Services Agency, Public Health Services, Community Health Statistics Unit.  
Contact 619.692.6672. [https://www.sandiegocounty.gov/hhsa/programs/phs/community\\_health\\_statistics/](https://www.sandiegocounty.gov/hhsa/programs/phs/community_health_statistics/).  
March, 2023.  
[LiveWellSD.org](http://LiveWellSD.org).



### Hospitalization Rates Among Residents, Ages 80+\* San Diego County, by Subregional Area, 2020

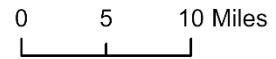


**Acute Myocardial Infarction**

- 363.3 - 596.6
- 596.7 - 829.8
- 829.9 - 1,063.1
- 1,063.2 - 1,296.4
- 1,296.5 - 1,529.6
- Data not shown

\*Hospitalization refers to treatment at a general acute care facility in San Diego County. Rates per 100,000 residents; not calculated for <11 cases.  
Sources: California Department of Health Care Access and Information (HCAI), 2020 Patient Discharge Database.  
Population estimates, San Diego Association of Governments (SANDAG), 2020 (v09/2022) were derived using the 2010 Census and should be considered preliminary.

Maps & Analysis by County of San Diego, Health and Human Services Agency, Public Health Services, Community Health Statistics Unit.  
Contact 619.692.6672. [https://www.sandiegocounty.gov/hhsa/programs/phs/community\\_health\\_statistics/](https://www.sandiegocounty.gov/hhsa/programs/phs/community_health_statistics/).  
March, 2023.  
LiveWellSD.org.

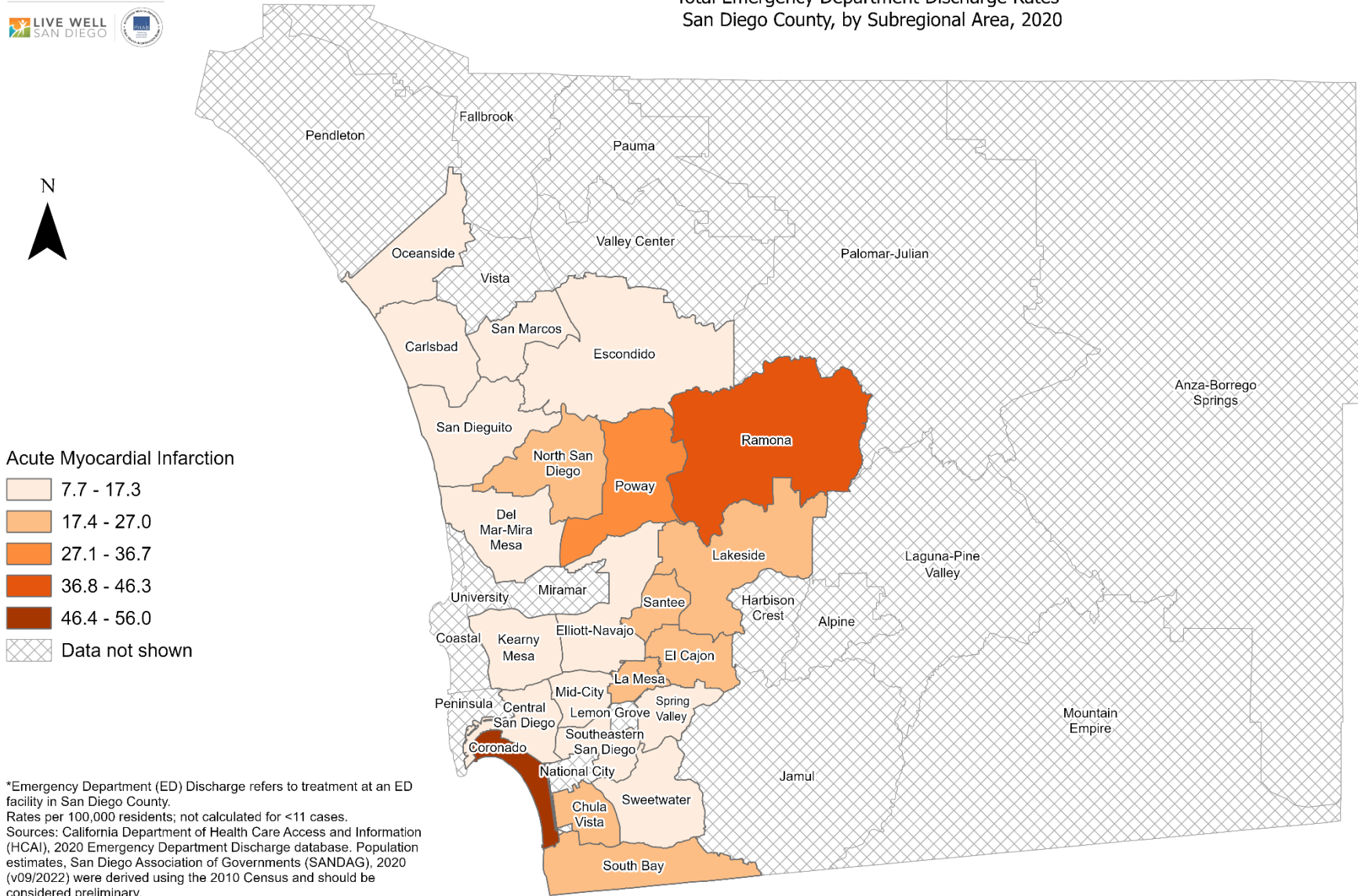


# SECTION 3

## **Emergency Department (ED) Discharge Rates Among San Diego County Residents by Demographics, 2020:**

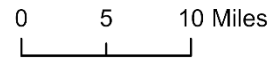
- Total Rate
- Race/Ethnicity
  - Asian/Pacific Islander (API)
  - Black
  - Hispanic
  - White
- Age Group
  - 0-9 Years
  - 10-19 Years
  - 20-29 Years
  - 30-39 Years
  - 40-49 Years
  - 50-59 Years
  - 60-69 Years
  - 70-79 Years
  - 80+ Years

### Total Emergency Department Discharge Rates\* San Diego County, by Subregional Area, 2020



\*Emergency Department (ED) Discharge refers to treatment at an ED facility in San Diego County. Rates per 100,000 residents; not calculated for <11 cases. Sources: California Department of Health Care Access and Information (HCAI), 2020 Emergency Department Discharge database. Population estimates, San Diego Association of Governments (SANDAG), 2020 (v09/2022) were derived using the 2010 Census and should be considered preliminary.

Maps & Analysis by County of San Diego, Health and Human Services Agency, Public Health Services, Community Health Statistics Unit. Contact 619.692.6672. [https://www.sandiegocounty.gov/hhsa/programs/phs/community\\_health\\_statistics/](https://www.sandiegocounty.gov/hhsa/programs/phs/community_health_statistics/). March, 2023. LiveWellSD.org.







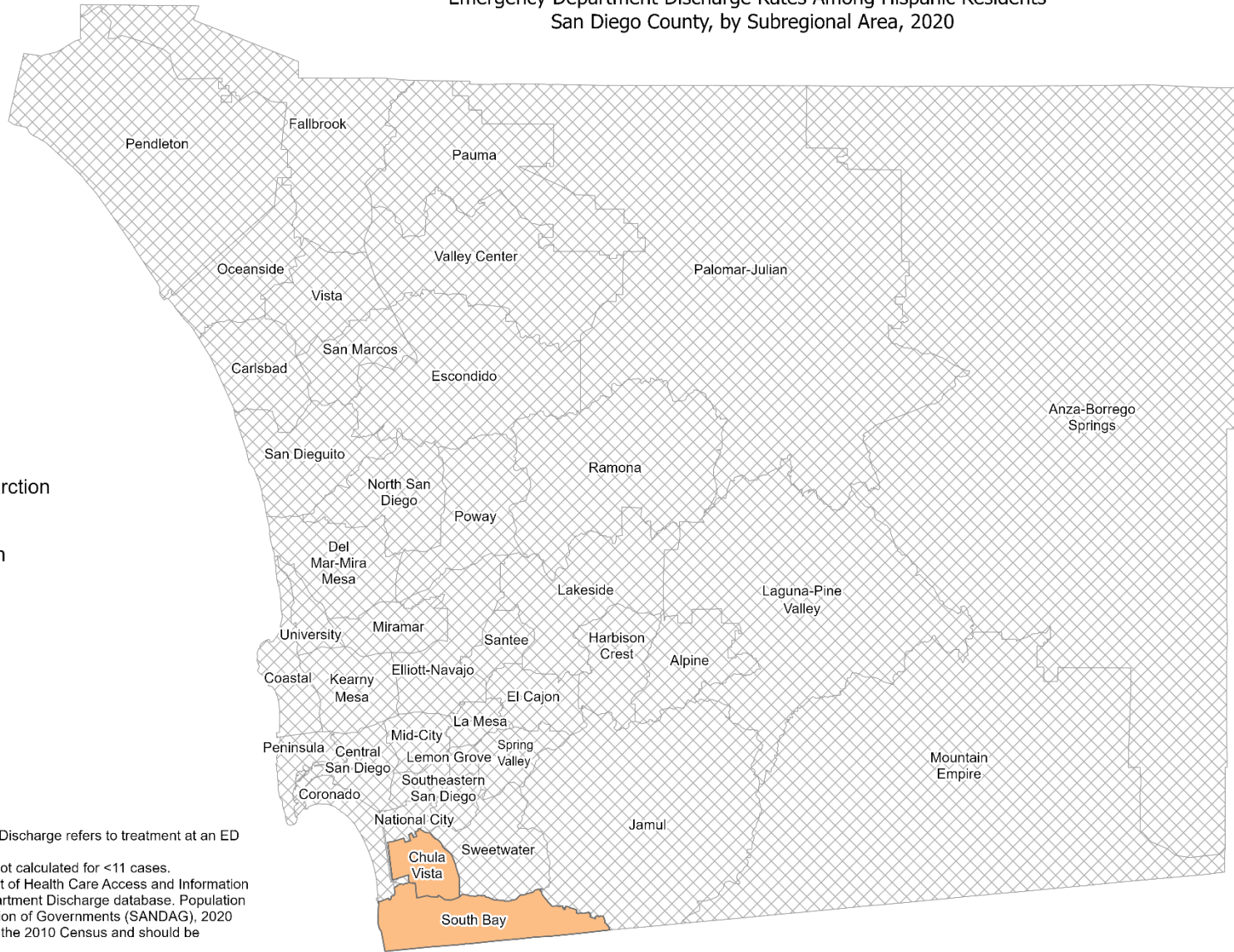
### Emergency Department Discharge Rates Among Hispanic Residents\* San Diego County, by Subregional Area, 2020



#### Acute Myocardial Infarction

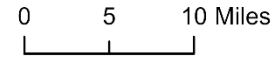
 14.3 - 22.7

 Data not shown

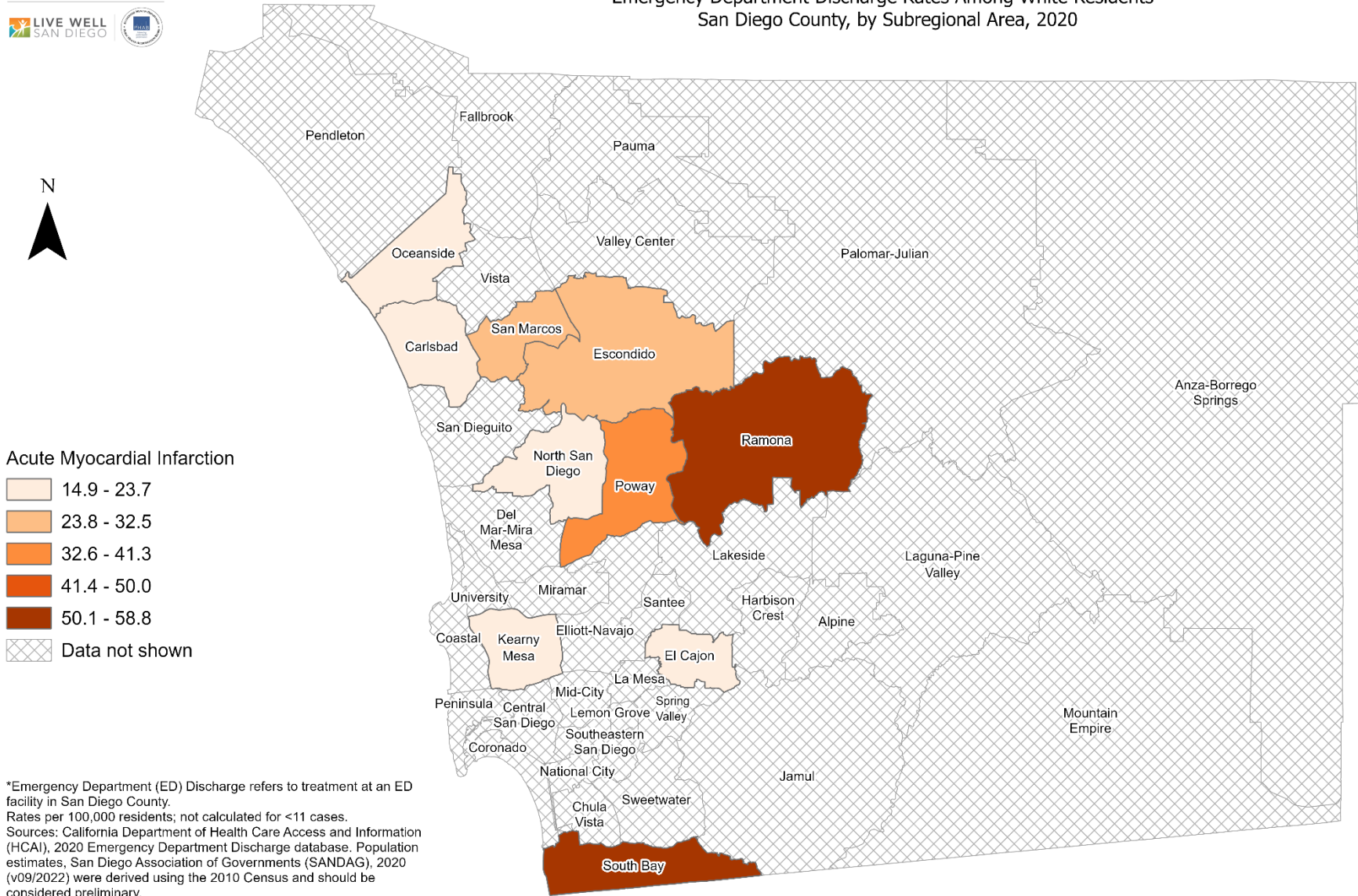


\*Emergency Department (ED) Discharge refers to treatment at an ED facility in San Diego County.  
Rates per 100,000 residents; not calculated for <11 cases.  
Sources: California Department of Health Care Access and Information (HCAI), 2020 Emergency Department Discharge database. Population estimates, San Diego Association of Governments (SANDAG), 2020 (v09/2022) were derived using the 2010 Census and should be considered preliminary.

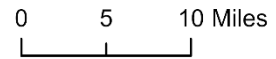
Maps & Analysis by County of San Diego, Health and Human Services Agency, Public Health Services, Community Health Statistics Unit.  
Contact 619.692.6672. [https://www.sandiegocounty.gov/hhsa/programs/phs/community\\_health\\_statistics/](https://www.sandiegocounty.gov/hhsa/programs/phs/community_health_statistics/).  
March, 2023.  
LiveWellSD.org.



### Emergency Department Discharge Rates Among White Residents\* San Diego County, by Subregional Area, 2020

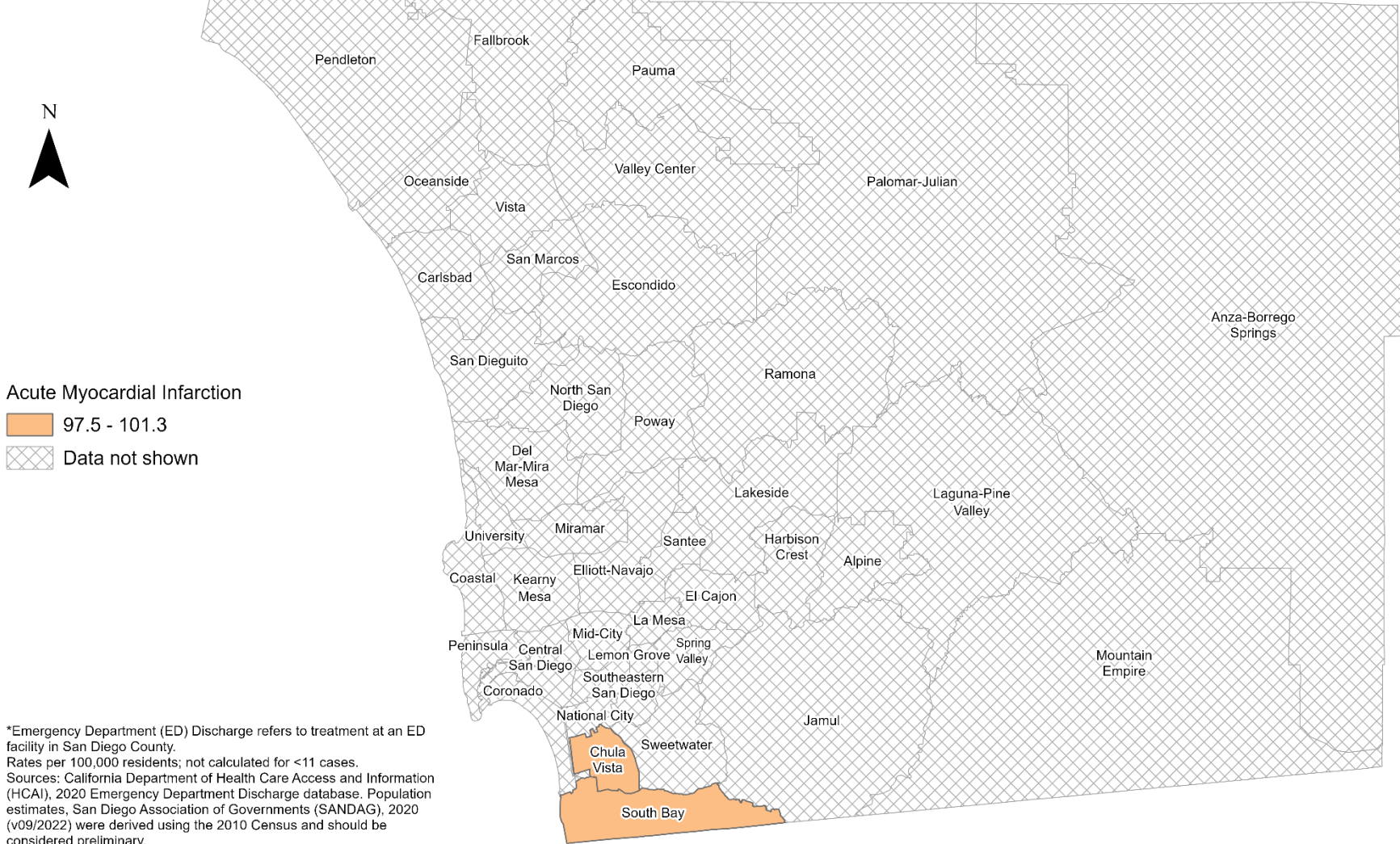


\*Emergency Department (ED) Discharge refers to treatment at an ED facility in San Diego County.  
Rates per 100,000 residents; not calculated for <11 cases.  
Sources: California Department of Health Care Access and Information (HCAI), 2020 Emergency Department Discharge database. Population estimates, San Diego Association of Governments (SANDAG), 2020 (v09/2022) were derived using the 2010 Census and should be considered preliminary.

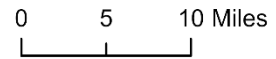




### Emergency Department Discharge Rates Among Residents, Ages 60-69\* San Diego County, by Subregional Area, 2020



\*Emergency Department (ED) Discharge refers to treatment at an ED facility in San Diego County.  
Rates per 100,000 residents; not calculated for <11 cases.  
Sources: California Department of Health Care Access and Information (HCAI), 2020 Emergency Department Discharge database. Population estimates, San Diego Association of Governments (SANDAG), 2020 (v09/2022) were derived using the 2010 Census and should be considered preliminary.



# SECTION 4

## **In-Patient Treatment (IPT) Rates Among San Diego County Residents by Demographics, 2020:**

- Total Rate
- Race/Ethnicity
  - Asian/Pacific Islander (API)
  - Black
  - Hispanic
  - White
- Age Group
  - 0-9 Years
  - 10-19 Years
  - 20-29 Years
  - 30-39 Years
  - 40-49 Years
  - 50-59 Years
  - 60-69 Years
  - 70-79 Years
  - 80+ Years

**No SRA-level rate data  
available for this section.**