

MAP ATLAS

Depression San Diego County, 2020

APRIL 2023

County of San Diego | Health and Human
Services Agency | Public Health Services |
Community Health Statistics Unit



Data Sources - San Diego County, 2020

Death* is based on underlying cause of death among San Diego County residents. Rates calculated per 100,000 residents. Rates not calculated for < 11 cases. Maps not produced for conditions/outcomes with no SRA-level rates. Some sections may have no maps.

Sources: California Department of Public Health, Center for Health Statistics, Office of Health Information and Research, Vital Records Business Intelligence System (VRBIS), 2020. ***The COVID-19 pandemic was associated with increases in all-cause mortality. COVID-19 deaths have affected the patterns of mortality including age-adjusted measures.*** SANDAG: San Diego Association of Governments (SANDAG) Population Estimates, 2020 (v09/2022). ***Population estimates for 2020 were derived using the 2010 Census and data should be considered preliminary.***

*For substance/drug overdoses, death rate is based on the multiple/contributing cause of death among San Diego County residents.

Hospitalization refers to treatment at a general acute care facility in San Diego County. Rates calculated per 100,000 residents. Rates not calculated for < 11 cases. Maps not produced for conditions/outcomes with no SRA-level rates. Some sections may have no maps.

Sources: California Department of Health Care Access and Information (HCAI), Patient Discharge Database, 2020. San Diego Association of Governments (SANDAG) Population Estimates, 2020 (v09/2022). ***Population estimates for 2020 were derived using the 2010 Census and data should be considered preliminary.***

Emergency Department (ED) Discharge refers to treatment at an ED facility in San Diego County.

Rates calculated per 100,000 residents. Rates not calculated for < 11 cases. Maps not produced for conditions/outcomes with no SRA-level rates. Some sections may have no maps.

Sources: California Department of Health Care Access and Information (HCAI), Emergency Department Discharge Database, 2020. San Diego Association of Governments (SANDAG) Population Estimates, 2020 (v09/2022). ***Population estimates for 2020 were derived using the 2010 Census and data should be considered preliminary.***

In-Patient Treatment (IPT) refers to treatment at a psychiatric care or chemical rehabilitation facility in San Diego County. Rates calculated per 100,000 residents. Rates not calculated for < 11 cases. Maps not produced for conditions/outcomes with no SRA-level rates. Some sections may have no maps.

Sources: California Department of Health Care Access and Information (HCAI), Patient Discharge Database, 2020. San Diego Association of Governments (SANDAG) Population Estimates, 2020 (v09/2022). ***Population estimates for 2020 were derived using the 2010 Census and data should be considered preliminary.***

Maps & Analysis by County of San Diego, Health and Human Services Agency, Public Health Services, Community Health Statistics Unit. Contact 619.692.6672. March 2023.

https://www.sandiegocounty.gov/hhsa/programs/phs/community_health_statistics/

LiveWellSD.org.

For more detailed explanation of geography, methods, and sources, please refer to CHSU's [2020 Community Profiles Data Guide and Data Dictionary Dashboards](#).

Table of Contents

Section 1: Deaths	1
Section 2: Hospitalizations	3
Section 3: Emergency Department (ED) Discharges	6
Section 4: In-Patient Treatments (IPT).....	17

SECTION 1

Death Rates Among San Diego County Residents by Demographics, 2020:

- Total Rate
- Race/Ethnicity
 - Asian/Pacific Islander (API)
 - Black
 - Hispanic
 - White
- Age Group
 - 0-9 Years
 - 10-19 Years
 - 20-29 Years
 - 30-39 Years
 - 40-49 Years
 - 50-59 Years
 - 60-69 Years
 - 70-79 Years
 - 80+ Years

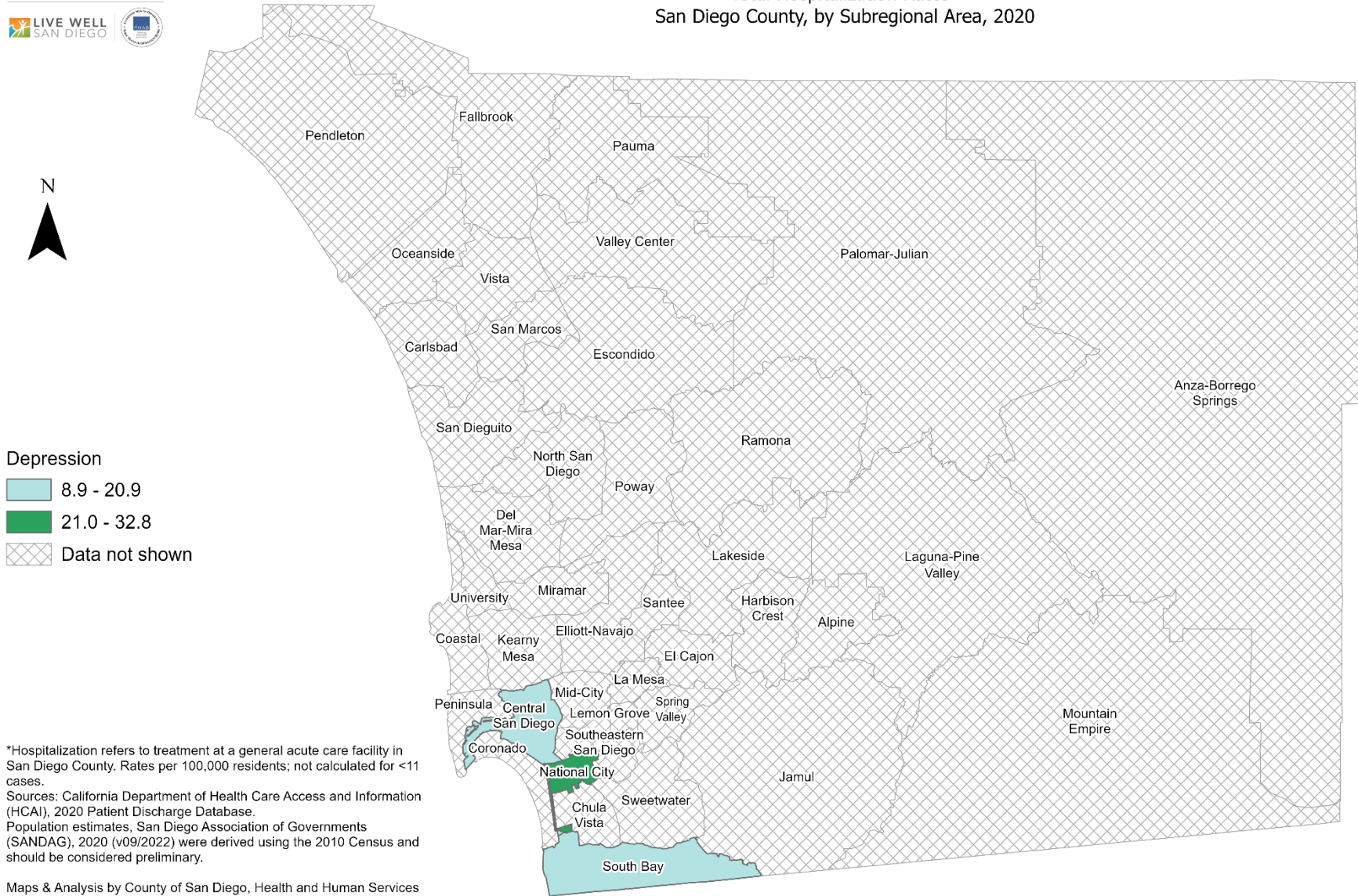
**No SRA-level rate data
available for this section.**

SECTION 2

Hospitalization Rates Among San Diego County Residents by Demographics, 2020:

- Total Rate
- Race/Ethnicity
 - Asian/Pacific Islander (API)
 - Black
 - Hispanic
 - White
- Age Group
 - 0-9 Years
 - 10-19 Years
 - 20-29 Years
 - 30-39 Years
 - 40-49 Years
 - 50-59 Years
 - 60-69 Years
 - 70-79 Years
 - 80+ Years

Total Hospitalization Rates* San Diego County, by Subregional Area, 2020

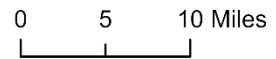


Depression

- 8.9 - 20.9
- 21.0 - 32.8
- Data not shown

*Hospitalization refers to treatment at a general acute care facility in San Diego County. Rates per 100,000 residents; not calculated for <11 cases.
 Sources: California Department of Health Care Access and Information (HCAI), 2020 Patient Discharge Database.
 Population estimates, San Diego Association of Governments (SANDAG), 2020 (v09/2022) were derived using the 2010 Census and should be considered preliminary.

Maps & Analysis by County of San Diego, Health and Human Services Agency, Public Health Services, Community Health Statistics Unit.
 Contact 619.692.6672. https://www.sandiegocounty.gov/hhsa/programs/phs/community_health_statistics/.
 March, 2023.
 LiveWellSD.org.



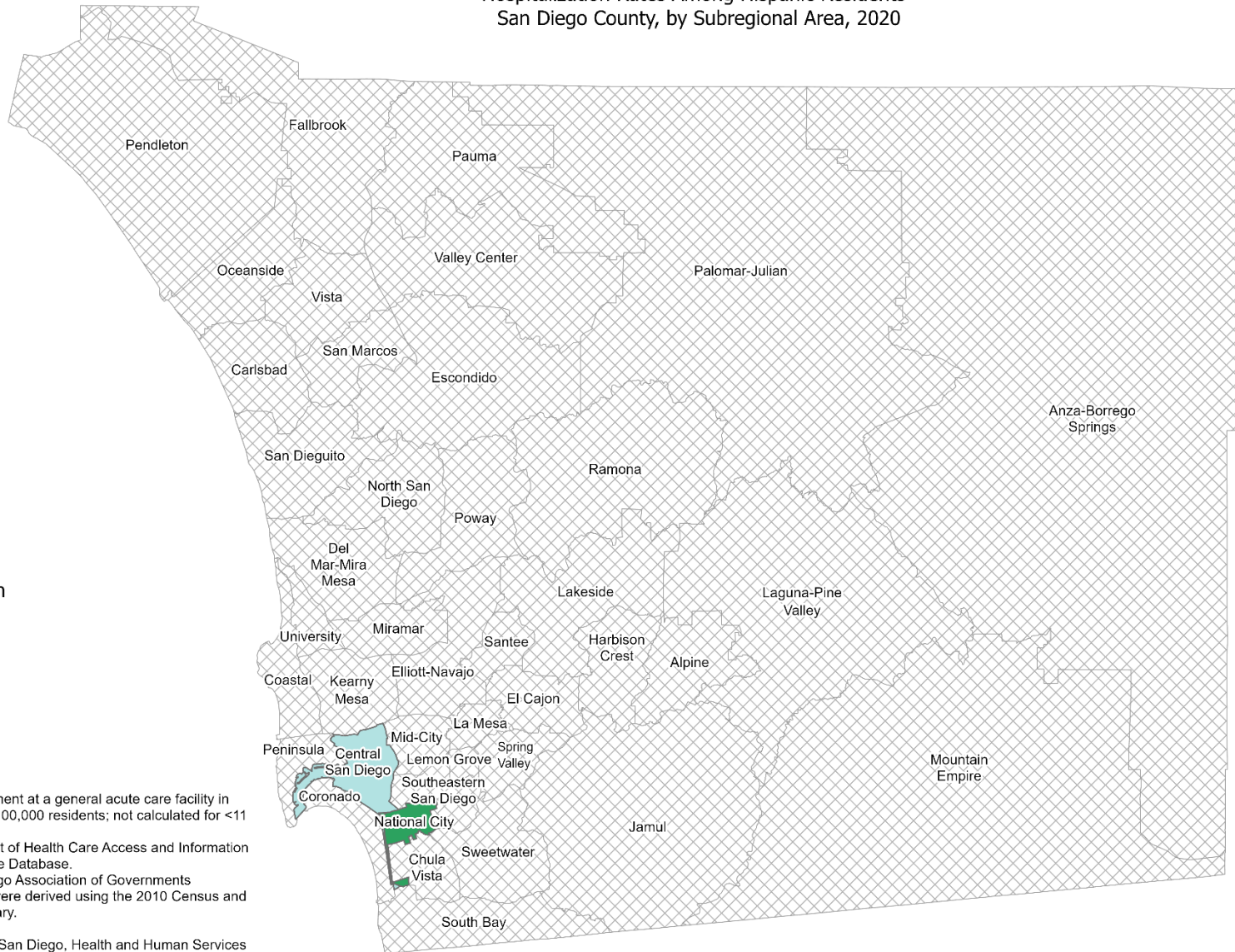


Hospitalization Rates Among Hispanic Residents* San Diego County, by Subregional Area, 2020



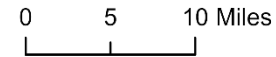
Depression

- 15.6 - 26.1
- 26.2 - 36.6
- Data not shown



*Hospitalization refers to treatment at a general acute care facility in San Diego County. Rates per 100,000 residents; not calculated for <11 cases.
 Sources: California Department of Health Care Access and Information (HCAI), 2020 Patient Discharge Database.
 Population estimates, San Diego Association of Governments (SANDAG), 2020 (v09/2022) were derived using the 2010 Census and should be considered preliminary.

Maps & Analysis by County of San Diego, Health and Human Services Agency, Public Health Services, Community Health Statistics Unit.
 Contact 619.692.6672. https://www.sandiegocounty.gov/hhsa/programs/phs/community_health_statistics/.
 March, 2023.
 LiveWellSD.org.

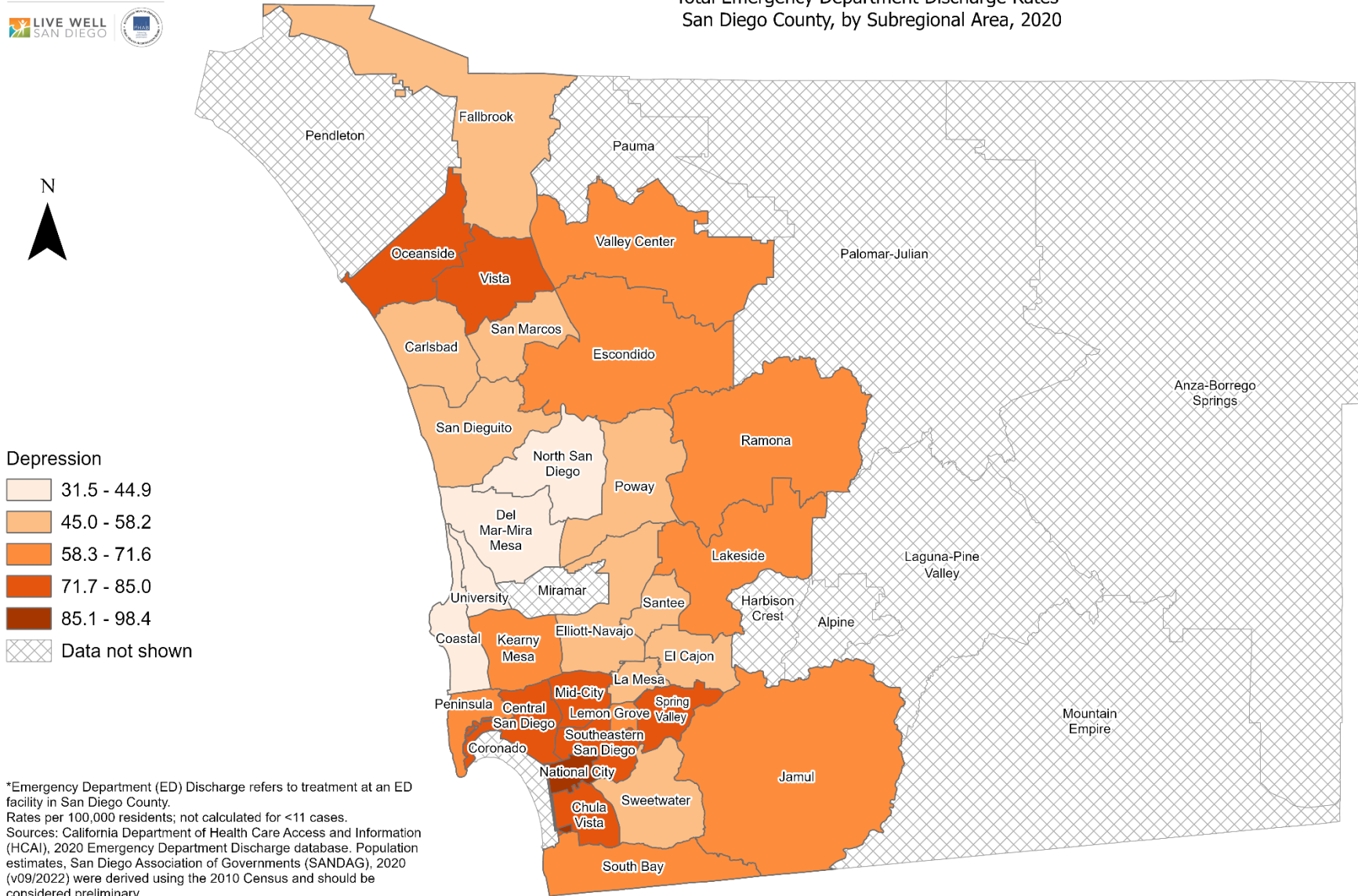


SECTION 3

Emergency Department (ED) Discharge Rates Among San Diego County Residents by Demographics, 2020:

- Total Rate
- Race/Ethnicity
 - Asian/Pacific Islander (API)
 - Black
 - Hispanic
 - White
- Age Group
 - 0-9 Years
 - 10-19 Years
 - 20-29 Years
 - 30-39 Years
 - 40-49 Years
 - 50-59 Years
 - 60-69 Years
 - 70-79 Years
 - 80+ Years

Total Emergency Department Discharge Rates* San Diego County, by Subregional Area, 2020

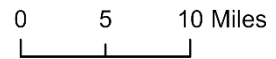


Depression

- 31.5 - 44.9
- 45.0 - 58.2
- 58.3 - 71.6
- 71.7 - 85.0
- 85.1 - 98.4
- Data not shown

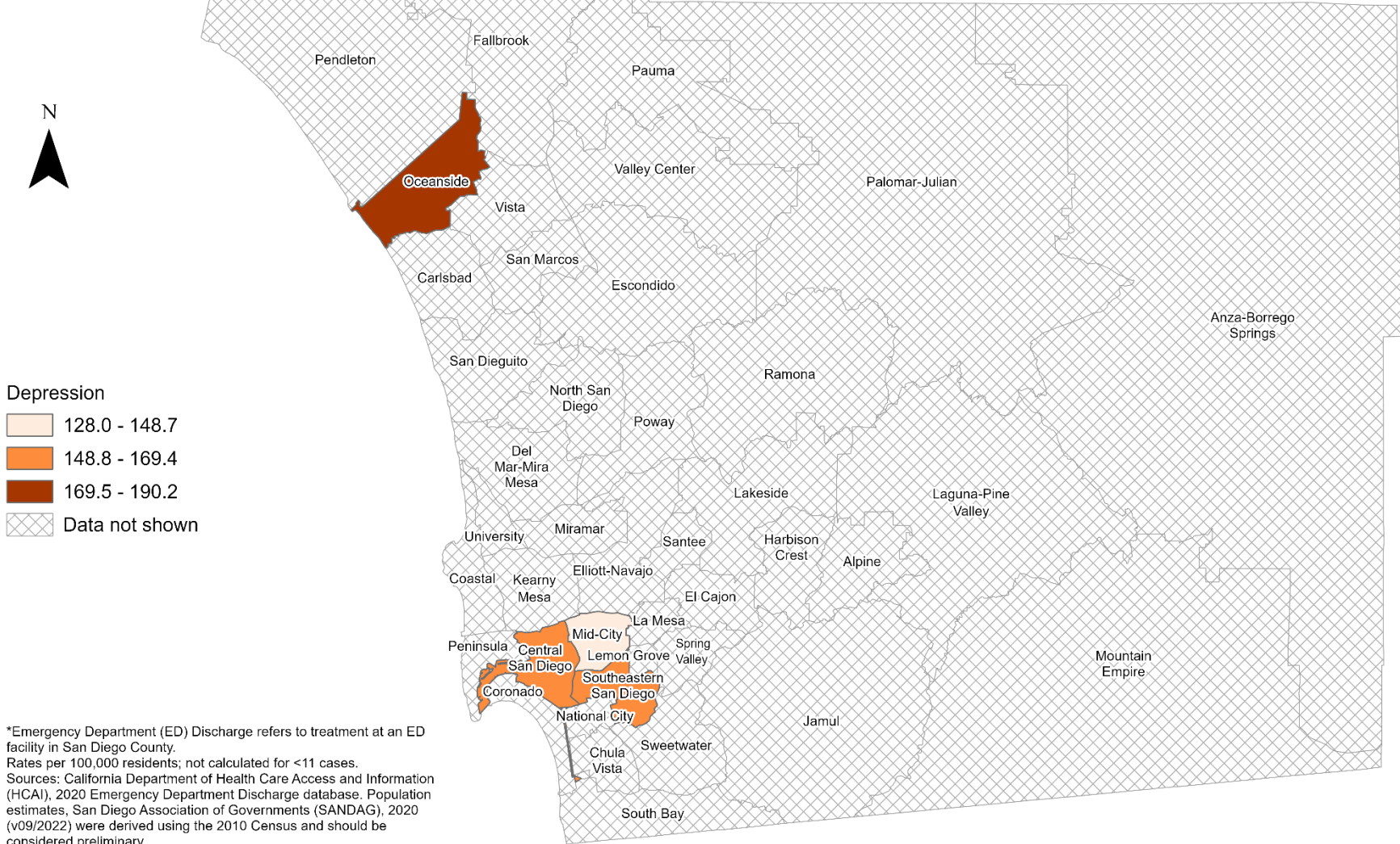
*Emergency Department (ED) Discharge refers to treatment at an ED facility in San Diego County. Rates per 100,000 residents; not calculated for <11 cases. Sources: California Department of Health Care Access and Information (HCAI), 2020 Emergency Department Discharge database. Population estimates, San Diego Association of Governments (SANDAG), 2020 (v09/2022) were derived using the 2010 Census and should be considered preliminary.

Maps & Analysis by County of San Diego, Health and Human Services Agency, Public Health Services, Community Health Statistics Unit. Contact 619.692.6672. https://www.sandiegocounty.gov/hhsa/programs/phs/community_health_statistics/. March, 2023. LiveWellSD.org.





Emergency Department Discharge Rates Among Black Residents* San Diego County, by Subregional Area, 2020

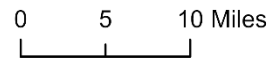


Depression

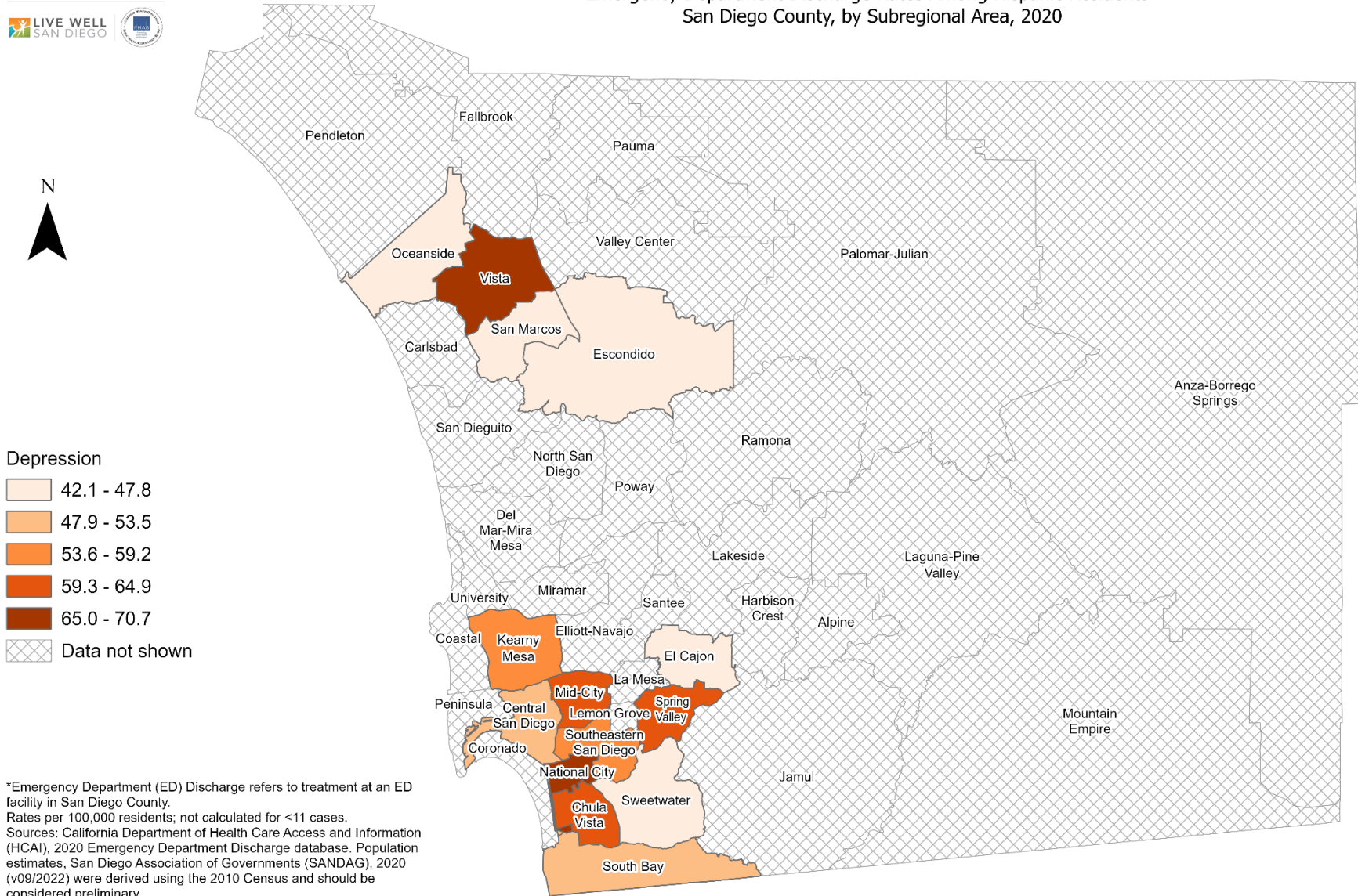
- 128.0 - 148.7
- 148.8 - 169.4
- 169.5 - 190.2
- Data not shown

*Emergency Department (ED) Discharge refers to treatment at an ED facility in San Diego County. Rates per 100,000 residents; not calculated for <11 cases. Sources: California Department of Health Care Access and Information (HCAI), 2020 Emergency Department Discharge database. Population estimates, San Diego Association of Governments (SANDAG), 2020 (v09/2022) were derived using the 2010 Census and should be considered preliminary.

Maps & Analysis by County of San Diego, Health and Human Services Agency, Public Health Services, Community Health Statistics Unit. Contact 619.692.6672. https://www.sandiegocounty.gov/hhsa/programs/phs/community_health_statistics/. March, 2023. LiveWellSD.org.



Emergency Department Discharge Rates Among Hispanic Residents* San Diego County, by Subregional Area, 2020

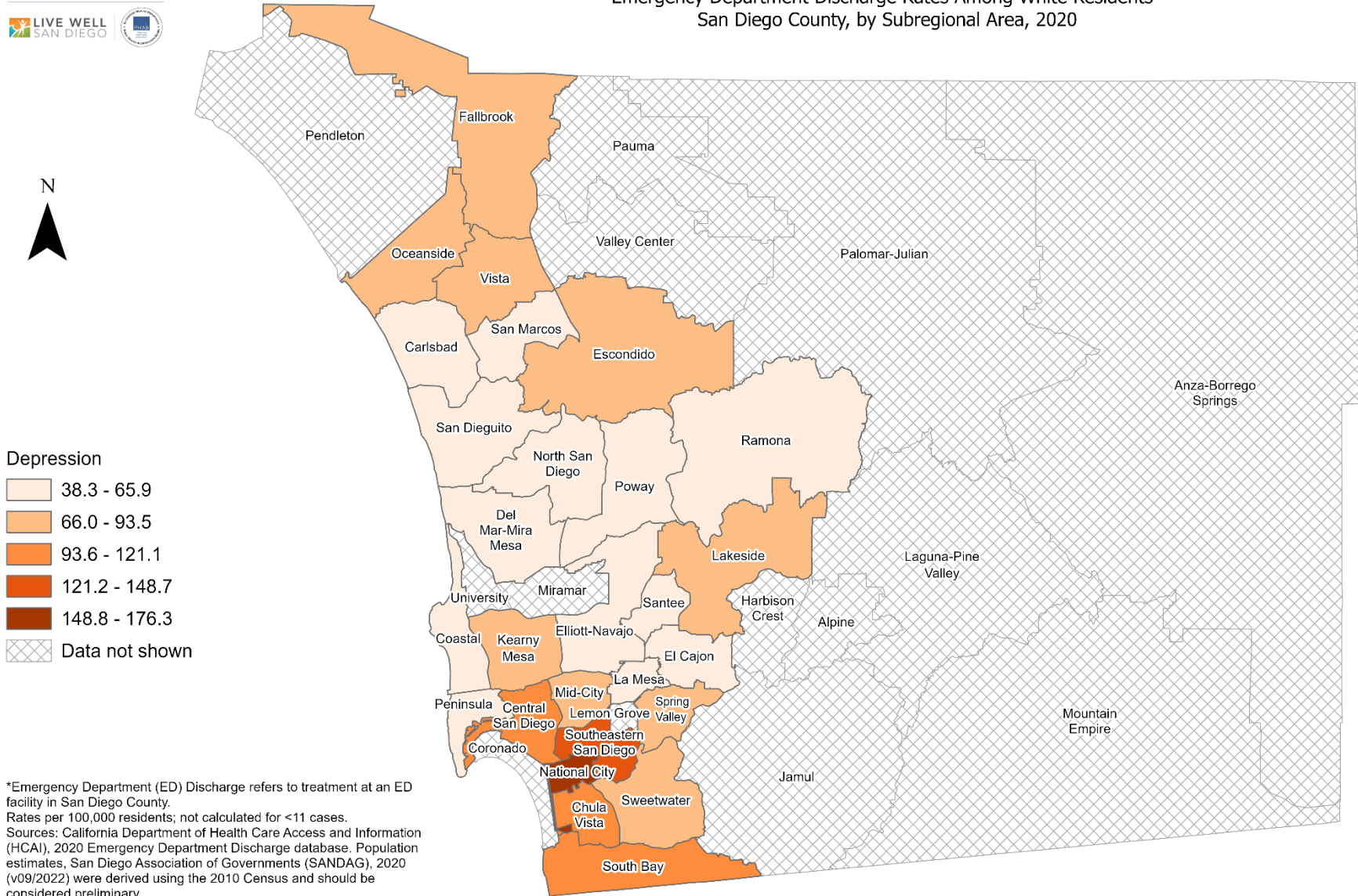


Depression

- 42.1 - 47.8
- 47.9 - 53.5
- 53.6 - 59.2
- 59.3 - 64.9
- 65.0 - 70.7
- Data not shown

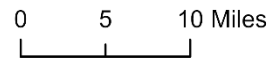
*Emergency Department (ED) Discharge refers to treatment at an ED facility in San Diego County. Rates per 100,000 residents; not calculated for <11 cases. Sources: California Department of Health Care Access and Information (HCAI), 2020 Emergency Department Discharge database. Population estimates, San Diego Association of Governments (SANDAG), 2020 (v09/2022) were derived using the 2010 Census and should be considered preliminary.

Emergency Department Discharge Rates Among White Residents* San Diego County, by Subregional Area, 2020

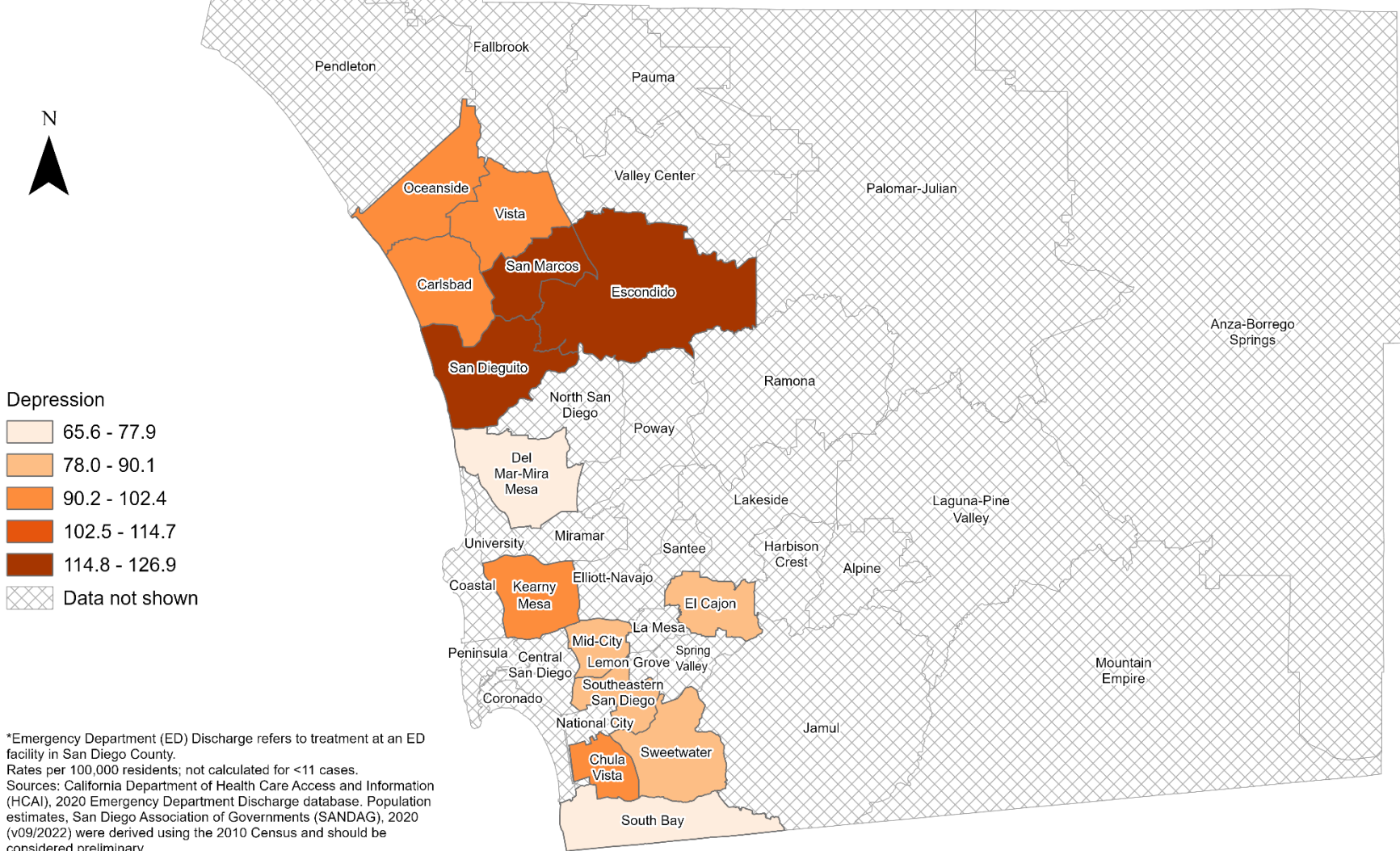


*Emergency Department (ED) Discharge refers to treatment at an ED facility in San Diego County. Rates per 100,000 residents; not calculated for <11 cases. Sources: California Department of Health Care Access and Information (HCAI), 2020 Emergency Department Discharge database. Population estimates, San Diego Association of Governments (SANDAG), 2020 (v09/2022) were derived using the 2010 Census and should be considered preliminary.

Maps & Analysis by County of San Diego, Health and Human Services Agency, Public Health Services, Community Health Statistics Unit. Contact 619.692.6672. https://www.sandiegocounty.gov/hhsa/programs/phs/community_health_statistics/. March, 2023. LiveWellSD.org.



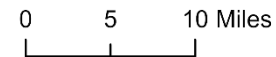
Emergency Department Discharge Rates Among Residents, Ages 10-19* San Diego County, by Subregional Area, 2020



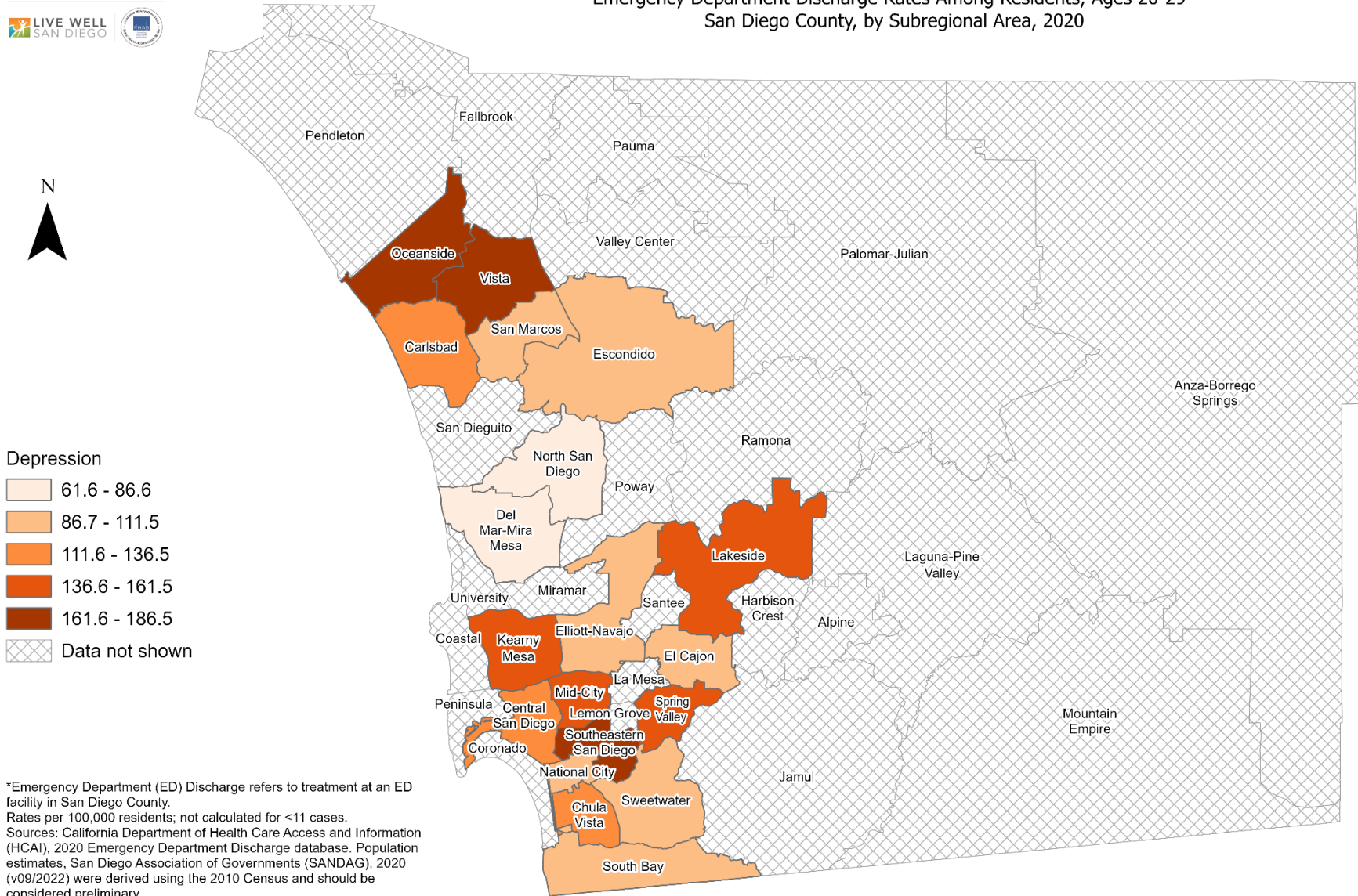
Depression

- 65.6 - 77.9
- 78.0 - 90.1
- 90.2 - 102.4
- 102.5 - 114.7
- 114.8 - 126.9
- Data not shown

*Emergency Department (ED) Discharge refers to treatment at an ED facility in San Diego County. Rates per 100,000 residents; not calculated for <11 cases. Sources: California Department of Health Care Access and Information (HCAI), 2020 Emergency Department Discharge database. Population estimates, San Diego Association of Governments (SANDAG), 2020 (v09/2022) were derived using the 2010 Census and should be considered preliminary.



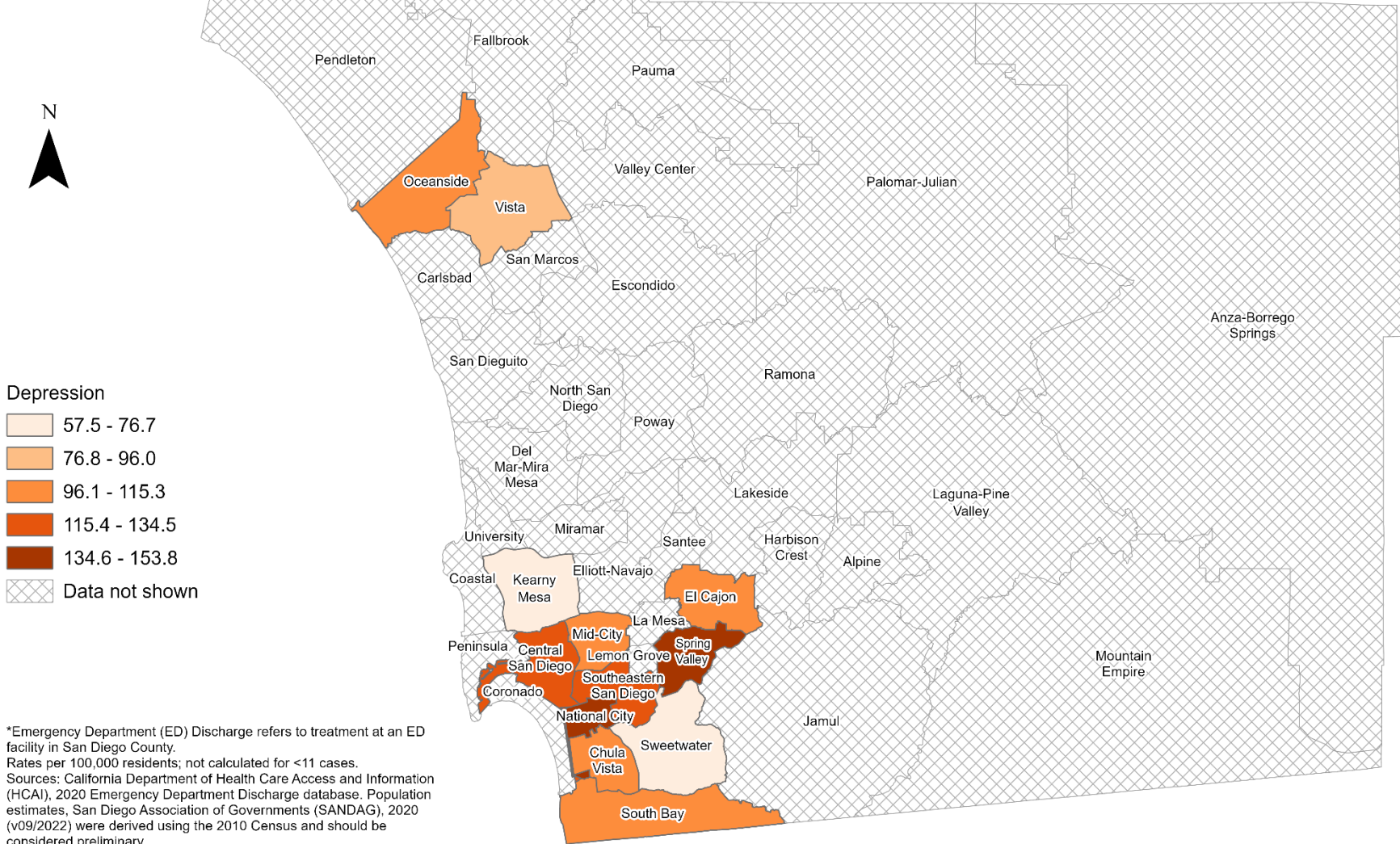
Emergency Department Discharge Rates Among Residents, Ages 20-29* San Diego County, by Subregional Area, 2020



*Emergency Department (ED) Discharge refers to treatment at an ED facility in San Diego County. Rates per 100,000 residents; not calculated for <11 cases. Sources: California Department of Health Care Access and Information (HCAI), 2020 Emergency Department Discharge database. Population estimates, San Diego Association of Governments (SANDAG), 2020 (v09/2022) were derived using the 2010 Census and should be considered preliminary.



Emergency Department Discharge Rates Among Residents, Ages 30-39* San Diego County, by Subregional Area, 2020

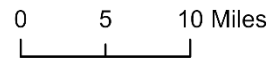


Depression

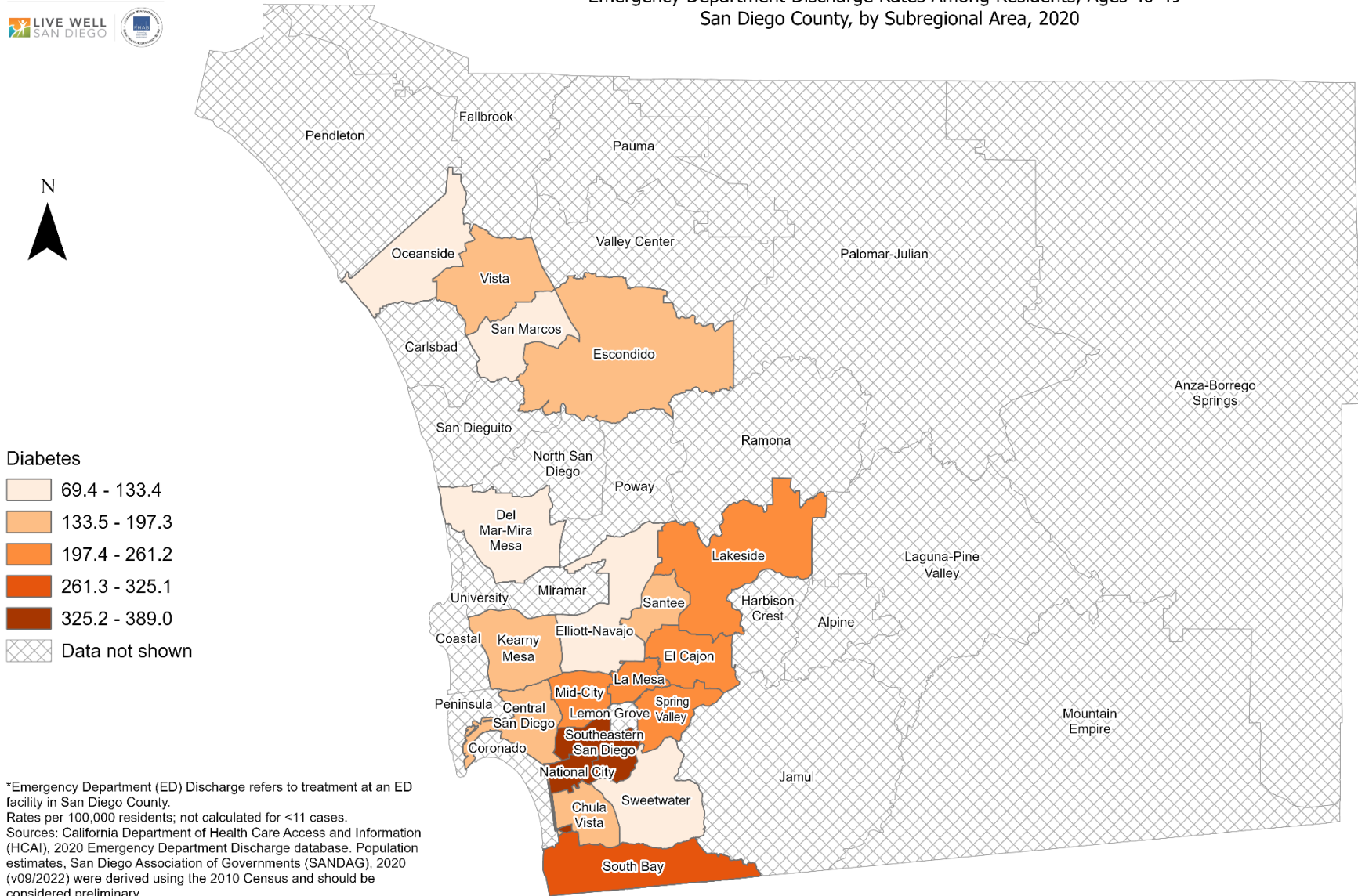
- 57.5 - 76.7
- 76.8 - 96.0
- 96.1 - 115.3
- 115.4 - 134.5
- 134.6 - 153.8
- Data not shown

*Emergency Department (ED) Discharge refers to treatment at an ED facility in San Diego County. Rates per 100,000 residents; not calculated for <11 cases. Sources: California Department of Health Care Access and Information (HCAI), 2020 Emergency Department Discharge database. Population estimates, San Diego Association of Governments (SANDAG), 2020 (v09/2022) were derived using the 2010 Census and should be considered preliminary.

Maps & Analysis by County of San Diego, Health and Human Services Agency, Public Health Services, Community Health Statistics Unit. Contact 619.692.6672. https://www.sandiegocounty.gov/hhsa/programs/phs/community_health_statistics/. March, 2023. LiveWellSD.org.



Emergency Department Discharge Rates Among Residents, Ages 40-49* San Diego County, by Subregional Area, 2020

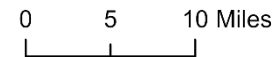


Diabetes

- 69.4 - 133.4
- 133.5 - 197.3
- 197.4 - 261.2
- 261.3 - 325.1
- 325.2 - 389.0
- Data not shown

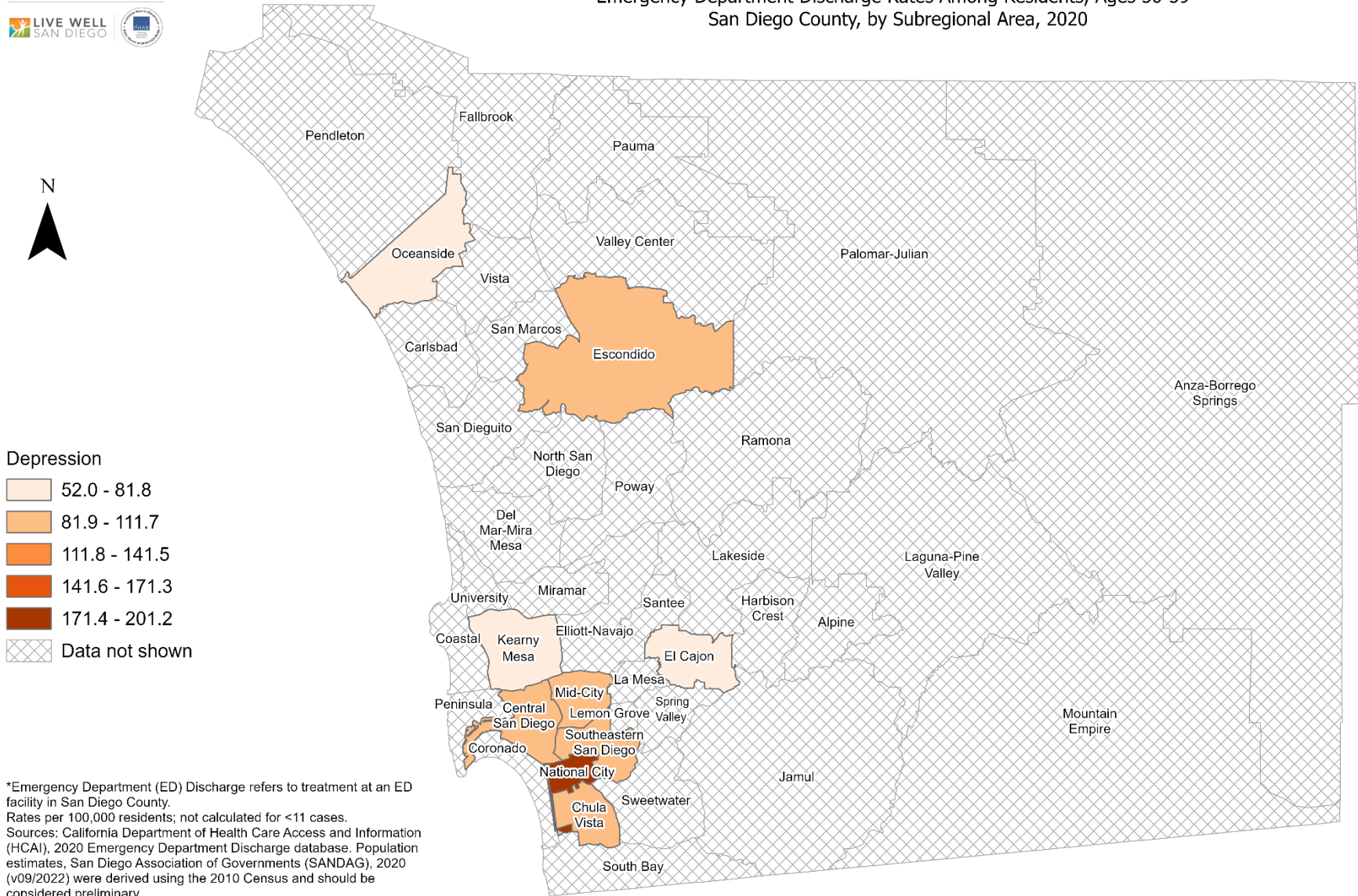
*Emergency Department (ED) Discharge refers to treatment at an ED facility in San Diego County. Rates per 100,000 residents; not calculated for <11 cases. Sources: California Department of Health Care Access and Information (HCAI), 2020 Emergency Department Discharge database. Population estimates, San Diego Association of Governments (SANDAG), 2020 (v09/2022) were derived using the 2010 Census and should be considered preliminary.

Maps & Analysis by County of San Diego, Health and Human Services Agency, Public Health Services, Community Health Statistics Unit. Contact 619.692.6672. https://www.sandiegocounty.gov/hhsa/programs/phs/community_health_statistics/. March, 2023. LiveWellSD.org.





Emergency Department Discharge Rates Among Residents, Ages 50-59* San Diego County, by Subregional Area, 2020

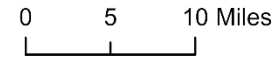


Depression

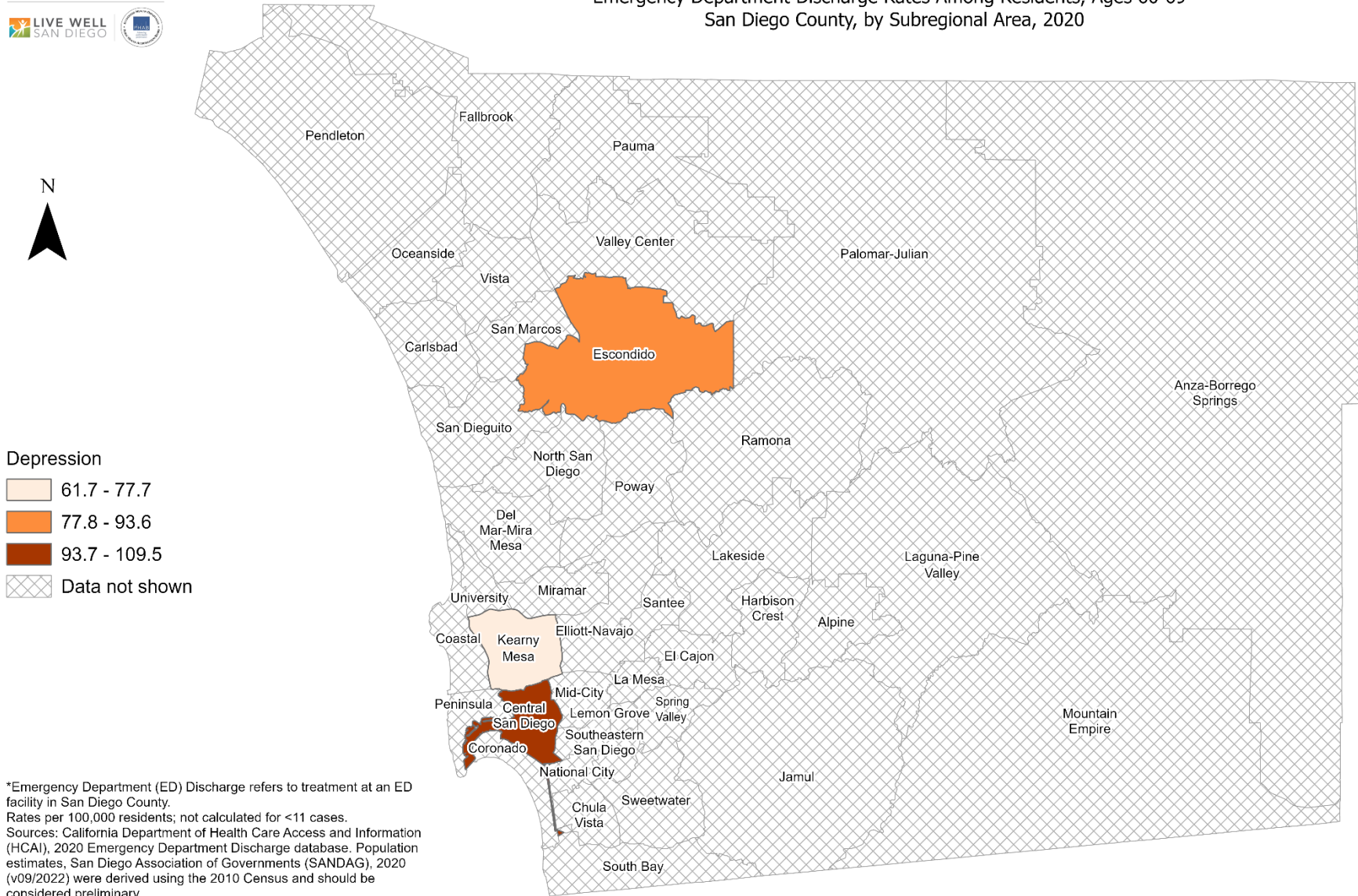
- 52.0 - 81.8
- 81.9 - 111.7
- 111.8 - 141.5
- 141.6 - 171.3
- 171.4 - 201.2
- Data not shown

*Emergency Department (ED) Discharge refers to treatment at an ED facility in San Diego County. Rates per 100,000 residents; not calculated for <11 cases. Sources: California Department of Health Care Access and Information (HCAI), 2020 Emergency Department Discharge database. Population estimates, San Diego Association of Governments (SANDAG), 2020 (v09/2022) were derived using the 2010 Census and should be considered preliminary.

Maps & Analysis by County of San Diego, Health and Human Services Agency, Public Health Services, Community Health Statistics Unit. Contact 619.692.6672. https://www.sandiegocounty.gov/hhsa/programs/phs/community_health_statistics/. March, 2023. LiveWellSD.org.



Emergency Department Discharge Rates Among Residents, Ages 60-69* San Diego County, by Subregional Area, 2020

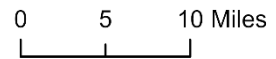


Depression

- 61.7 - 77.7
- 77.8 - 93.6
- 93.7 - 109.5
- Data not shown

*Emergency Department (ED) Discharge refers to treatment at an ED facility in San Diego County. Rates per 100,000 residents; not calculated for <11 cases. Sources: California Department of Health Care Access and Information (HCAI), 2020 Emergency Department Discharge database. Population estimates, San Diego Association of Governments (SANDAG), 2020 (v09/2022) were derived using the 2010 Census and should be considered preliminary.

Maps & Analysis by County of San Diego, Health and Human Services Agency, Public Health Services, Community Health Statistics Unit. Contact 619.692.6672. https://www.sandiegocounty.gov/hhsa/programs/phs/community_health_statistics/. March, 2023. LiveWellSD.org.

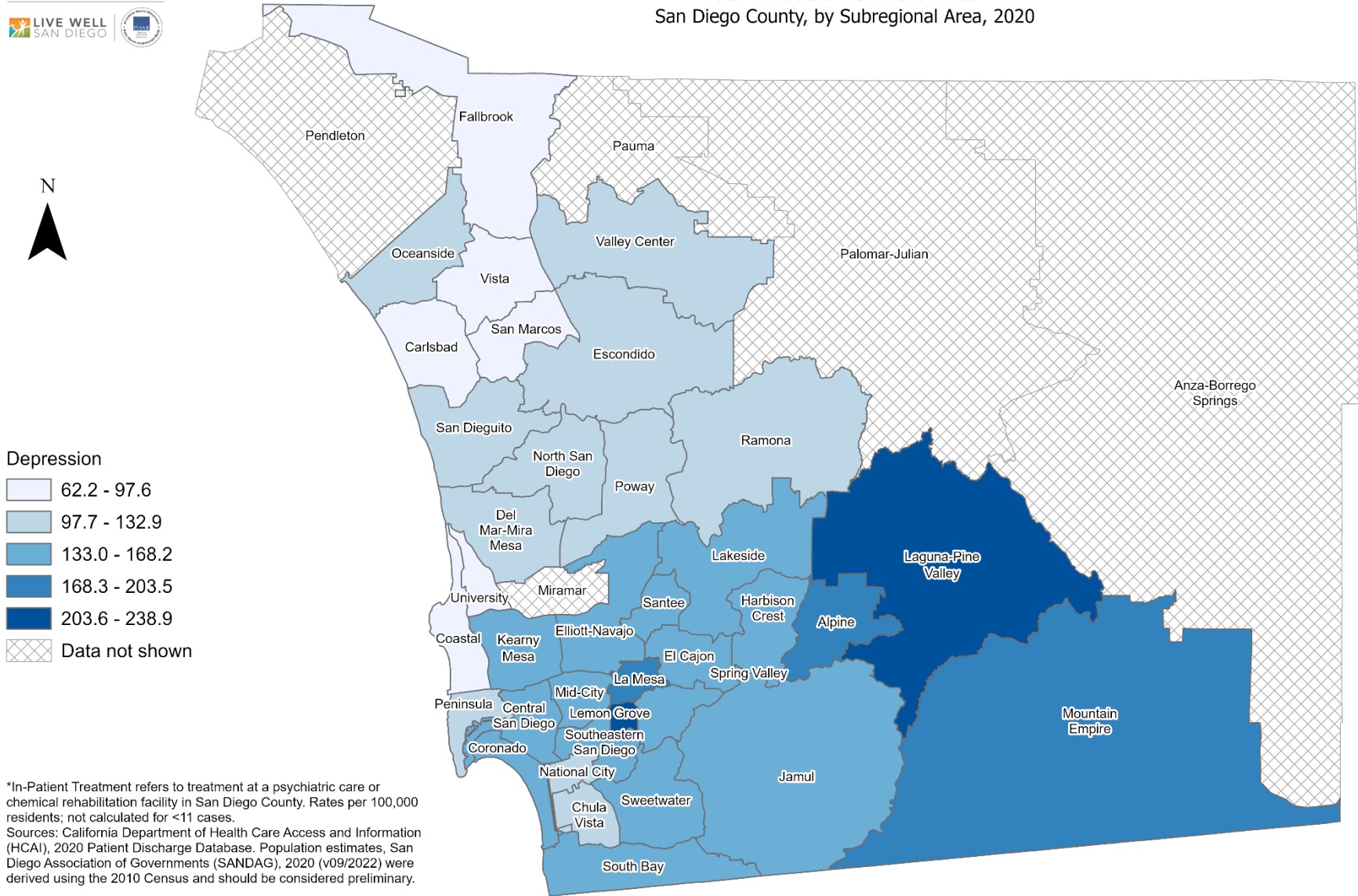


SECTION 4

In-Patient Treatment (IPT) Rates Among San Diego County Residents by Demographics, 2020:

- Total Rate
- Race/Ethnicity
 - Asian/Pacific Islander (API)
 - Black
 - Hispanic
 - White
- Age Group
 - 0-9 Years
 - 10-19 Years
 - 20-29 Years
 - 30-39 Years
 - 40-49 Years
 - 50-59 Years
 - 60-69 Years
 - 70-79 Years
 - 80+ Years

Total In-Patient Treatment Rates* San Diego County, by Subregional Area, 2020

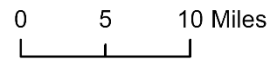


Depression

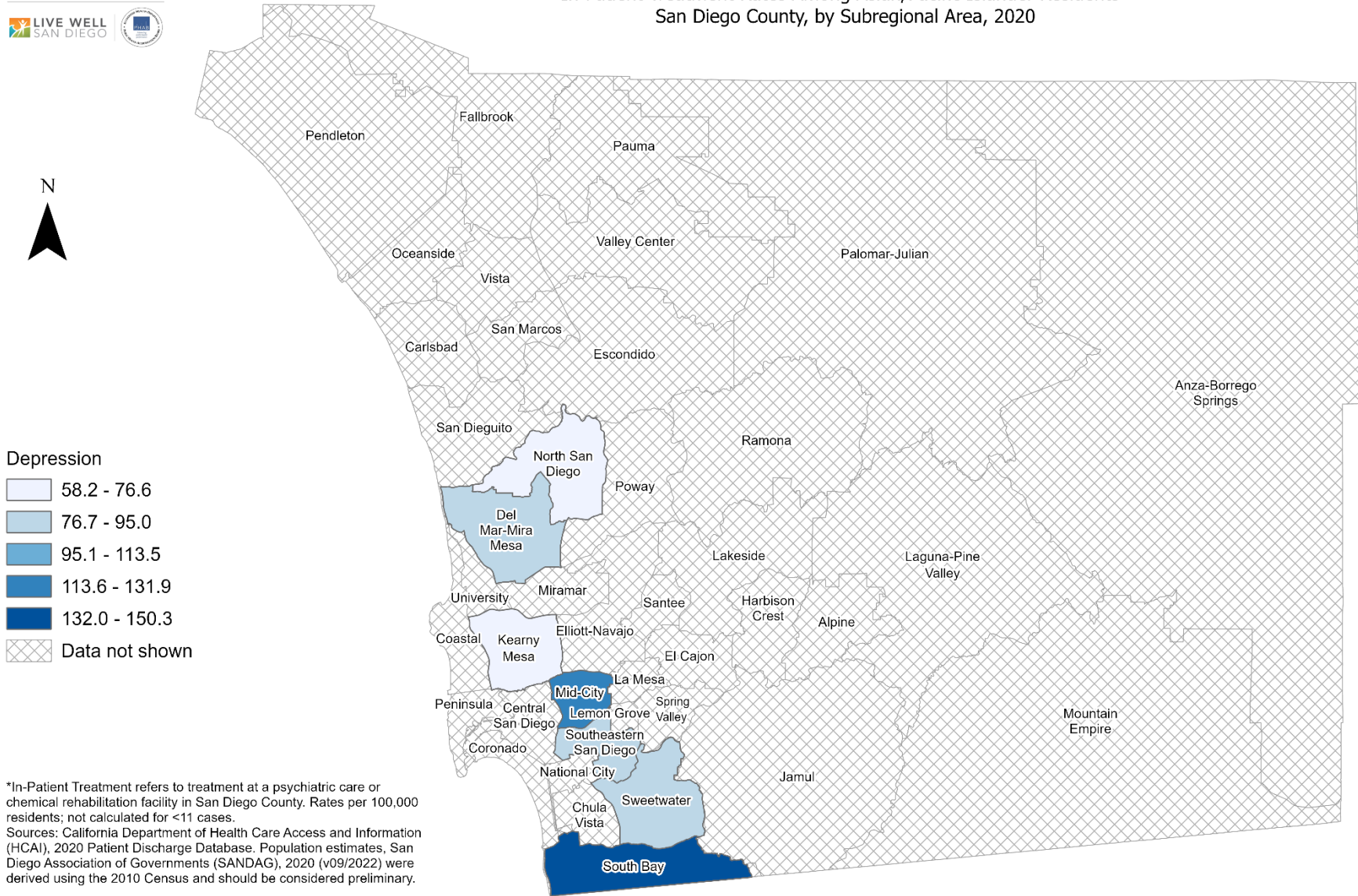
- 62.2 - 97.6
- 97.7 - 132.9
- 133.0 - 168.2
- 168.3 - 203.5
- 203.6 - 238.9
- Data not shown

*In-Patient Treatment refers to treatment at a psychiatric care or chemical rehabilitation facility in San Diego County. Rates per 100,000 residents; not calculated for <11 cases.
Sources: California Department of Health Care Access and Information (HCAI), 2020 Patient Discharge Database. Population estimates, San Diego Association of Governments (SANDAG), 2020 (v09/2022) were derived using the 2010 Census and should be considered preliminary.

Maps & Analysis by County of San Diego, Health and Human Services Agency, Public Health Services, Community Health Statistics Unit.
Contact 619.692.6672. https://www.sandiegocounty.gov/hhsa/programs/phs/community_health_statistics/
March, 2023.
LiveWellSD.org.



In-Patient Treatment Rates Among Asian/Pacific Islander Residents* San Diego County, by Subregional Area, 2020

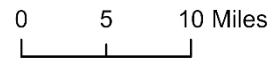


Depression

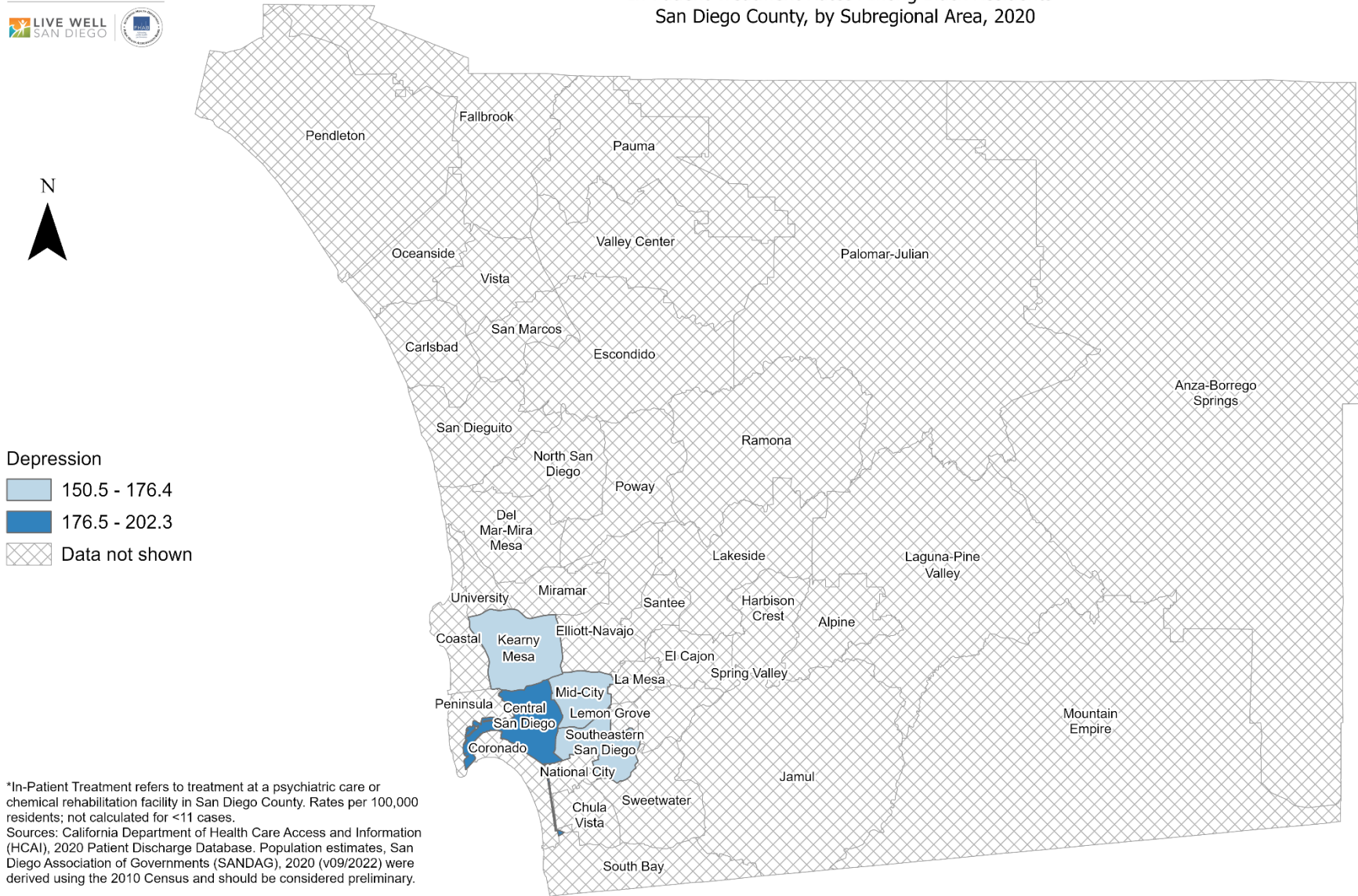
- 58.2 - 76.6
- 76.7 - 95.0
- 95.1 - 113.5
- 113.6 - 131.9
- 132.0 - 150.3
- Data not shown

*In-Patient Treatment refers to treatment at a psychiatric care or chemical rehabilitation facility in San Diego County. Rates per 100,000 residents; not calculated for <11 cases.
Sources: California Department of Health Care Access and Information (HCAI), 2020 Patient Discharge Database. Population estimates, San Diego Association of Governments (SANDAG), 2020 (v09/2022) were derived using the 2010 Census and should be considered preliminary.

Maps & Analysis by County of San Diego, Health and Human Services Agency, Public Health Services, Community Health Statistics Unit.
Contact 619.692.6672. https://www.sandiegocounty.gov/hhsa/programs/phs/community_health_statistics/
March, 2023.
LiveWellSD.org.

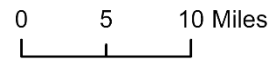


In-Patient Treatment Rates Among Black Residents* San Diego County, by Subregional Area, 2020

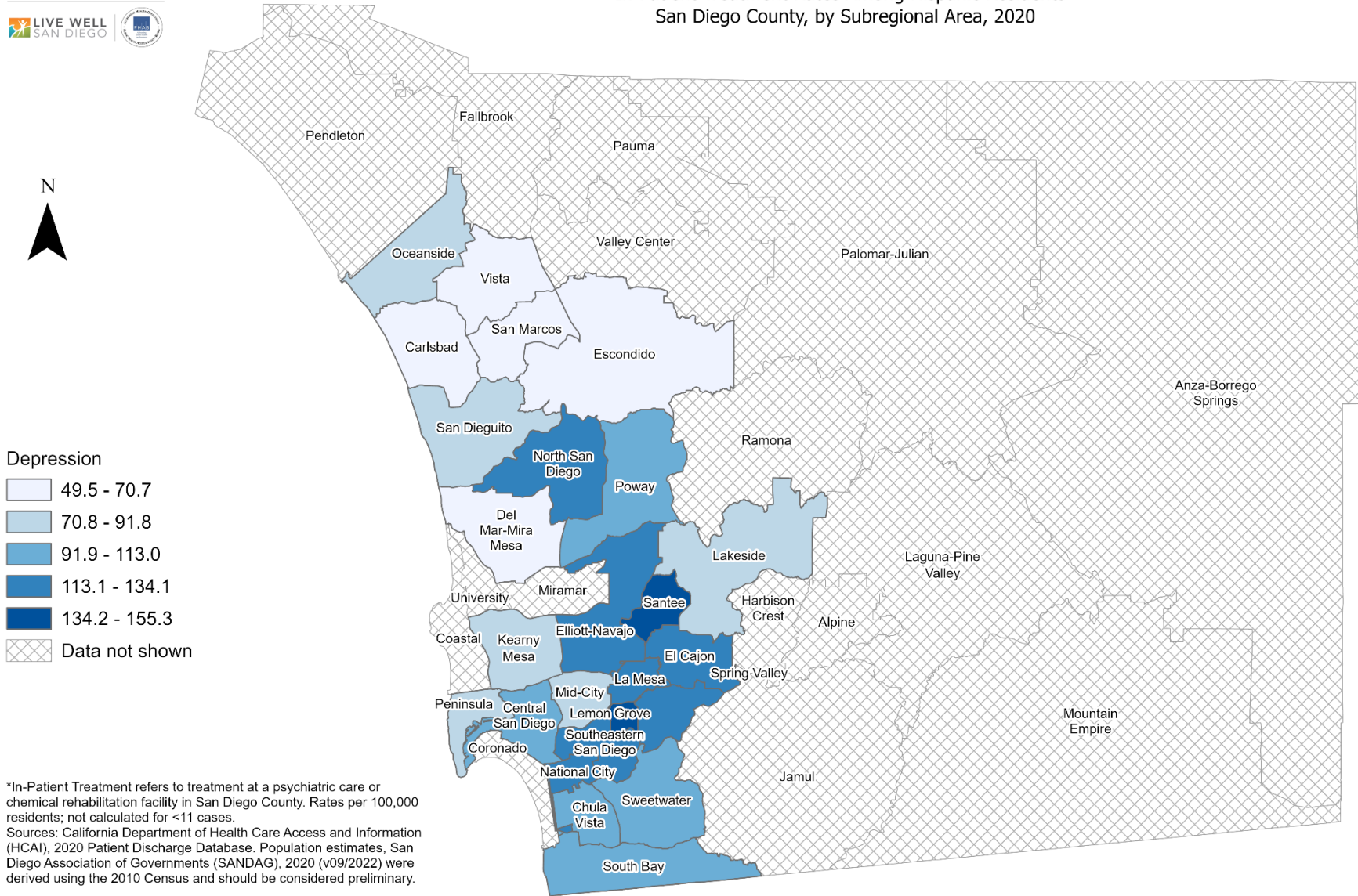


*In-Patient Treatment refers to treatment at a psychiatric care or chemical rehabilitation facility in San Diego County. Rates per 100,000 residents; not calculated for <11 cases.
Sources: California Department of Health Care Access and Information (HCAI), 2020 Patient Discharge Database. Population estimates, San Diego Association of Governments (SANDAG), 2020 (v09/2022) were derived using the 2010 Census and should be considered preliminary.

Maps & Analysis by County of San Diego, Health and Human Services Agency, Public Health Services, Community Health Statistics Unit.
Contact 619.692.6672. https://www.sandiegocounty.gov/hhsa/programs/phs/community_health_statistics/.
March, 2023.
LiveWellSD.org.



In-Patient Treatment Rates Among Hispanic Residents* San Diego County, by Subregional Area, 2020

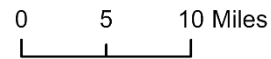


Depression

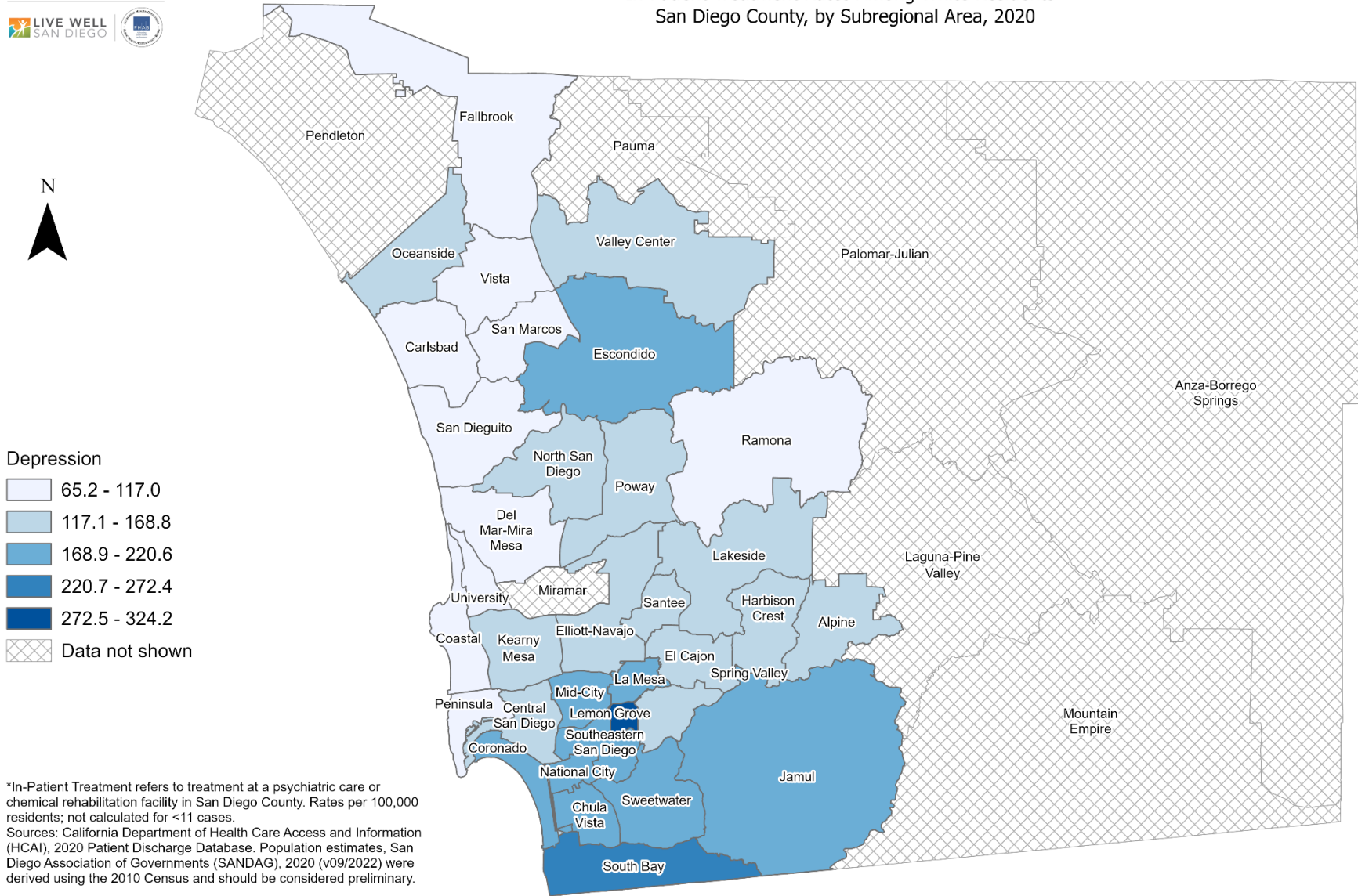
- 49.5 - 70.7
- 70.8 - 91.8
- 91.9 - 113.0
- 113.1 - 134.1
- 134.2 - 155.3
- Data not shown

*In-Patient Treatment refers to treatment at a psychiatric care or chemical rehabilitation facility in San Diego County. Rates per 100,000 residents; not calculated for <11 cases.
Sources: California Department of Health Care Access and Information (HCAI), 2020 Patient Discharge Database. Population estimates, San Diego Association of Governments (SANDAG), 2020 (v09/2022) were derived using the 2010 Census and should be considered preliminary.

Maps & Analysis by County of San Diego, Health and Human Services Agency, Public Health Services, Community Health Statistics Unit.
Contact 619.692.6672. https://www.sandiegocounty.gov/hhsa/programs/phs/community_health_statistics/
March, 2023.
LiveWellSD.org.

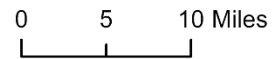


In-Patient Treatment Rates Among White Residents* San Diego County, by Subregional Area, 2020

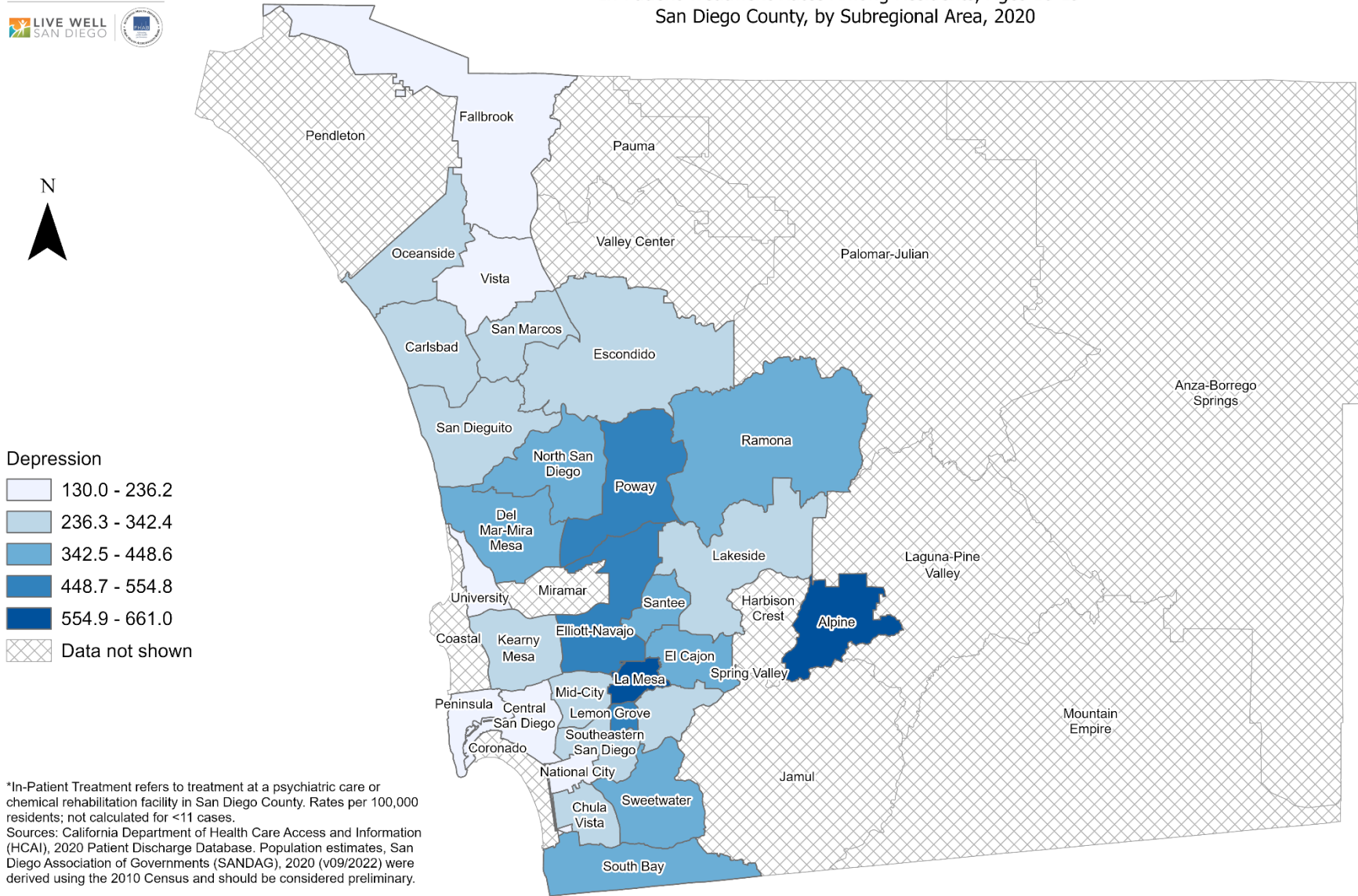


*In-Patient Treatment refers to treatment at a psychiatric care or chemical rehabilitation facility in San Diego County. Rates per 100,000 residents; not calculated for <11 cases.
Sources: California Department of Health Care Access and Information (HCAI), 2020 Patient Discharge Database. Population estimates, San Diego Association of Governments (SANDAG), 2020 (v09/2022) were derived using the 2010 Census and should be considered preliminary.

Maps & Analysis by County of San Diego, Health and Human Services Agency, Public Health Services, Community Health Statistics Unit.
Contact 619.692.6672. https://www.sandiegocounty.gov/hhsa/programs/phs/community_health_statistics/
March, 2023.
LiveWellSD.org.



In-Patient Treatment Rates Among Residents, Ages 10-19* San Diego County, by Subregional Area, 2020



Depression

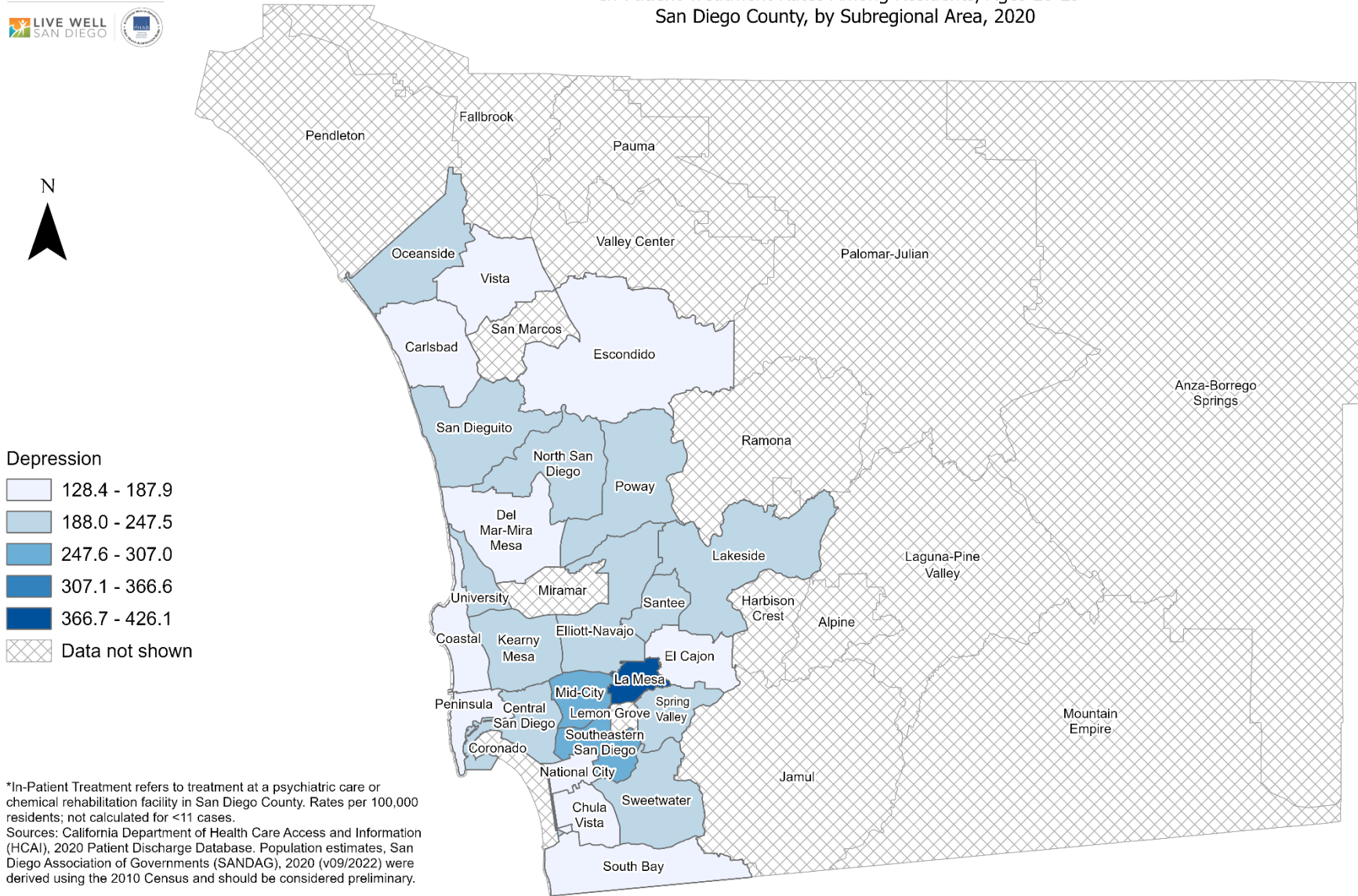
- 130.0 - 236.2
- 236.3 - 342.4
- 342.5 - 448.6
- 448.7 - 554.8
- 554.9 - 661.0
- Data not shown

*In-Patient Treatment refers to treatment at a psychiatric care or chemical rehabilitation facility in San Diego County. Rates per 100,000 residents; not calculated for <11 cases.
Sources: California Department of Health Care Access and Information (HCAI), 2020 Patient Discharge Database. Population estimates, San Diego Association of Governments (SANDAG), 2020 (v09/2022) were derived using the 2010 Census and should be considered preliminary.

Maps & Analysis by County of San Diego, Health and Human Services Agency, Public Health Services, Community Health Statistics Unit.
Contact 619.692.6672. https://www.sandiegocounty.gov/hhsa/programs/phs/community_health_statistics/
March, 2023.
LiveWellSD.org.



In-Patient Treatment Rates Among Residents, Ages 20-29* San Diego County, by Subregional Area, 2020

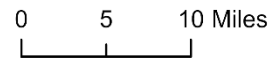


Depression

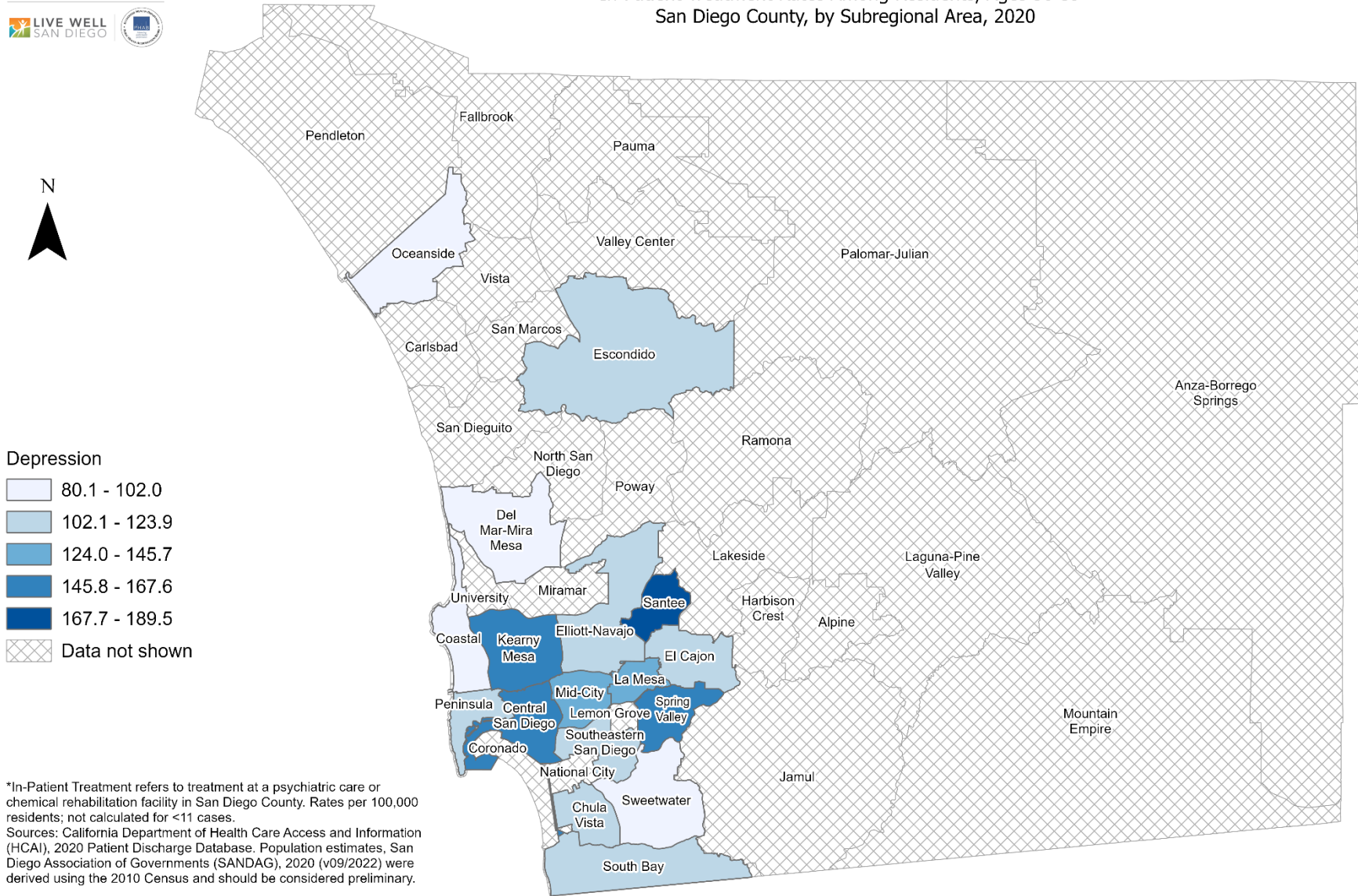
- 128.4 - 187.9
- 188.0 - 247.5
- 247.6 - 307.0
- 307.1 - 366.6
- 366.7 - 426.1
- Data not shown

*In-Patient Treatment refers to treatment at a psychiatric care or chemical rehabilitation facility in San Diego County. Rates per 100,000 residents; not calculated for <11 cases.
Sources: California Department of Health Care Access and Information (HCAI), 2020 Patient Discharge Database. Population estimates, San Diego Association of Governments (SANDAG), 2020 (v09/2022) were derived using the 2010 Census and should be considered preliminary.

Maps & Analysis by County of San Diego, Health and Human Services Agency, Public Health Services, Community Health Statistics Unit.
Contact 619.692.6672. https://www.sandiegocounty.gov/hhsa/programs/phs/community_health_statistics/
March, 2023.
LiveWellSD.org.



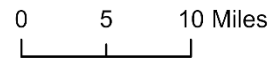
In-Patient Treatment Rates Among Residents, Ages 30-39* San Diego County, by Subregional Area, 2020



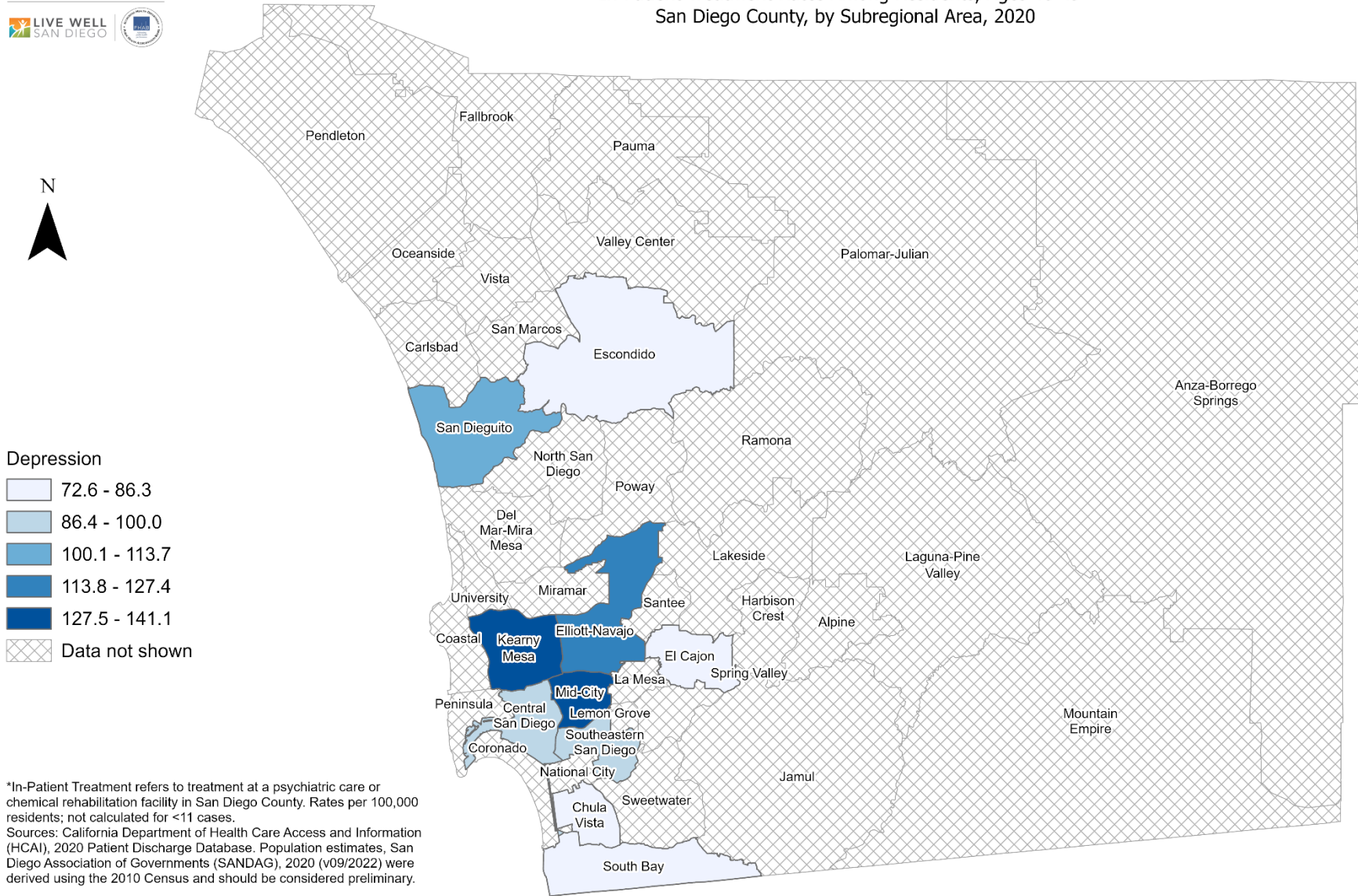
- Depression**
- 80.1 - 102.0
 - 102.1 - 123.9
 - 124.0 - 145.7
 - 145.8 - 167.6
 - 167.7 - 189.5
 - Data not shown

*In-Patient Treatment refers to treatment at a psychiatric care or chemical rehabilitation facility in San Diego County. Rates per 100,000 residents; not calculated for <11 cases.
Sources: California Department of Health Care Access and Information (HCAI), 2020 Patient Discharge Database. Population estimates, San Diego Association of Governments (SANDAG), 2020 (v09/2022) were derived using the 2010 Census and should be considered preliminary.

Maps & Analysis by County of San Diego, Health and Human Services Agency, Public Health Services, Community Health Statistics Unit.
Contact 619.692.6672. https://www.sandiegocounty.gov/hhsa/programs/phs/community_health_statistics/
March, 2023.
LiveWellSD.org.



In-Patient Treatment Rates Among Residents, Ages 40-49* San Diego County, by Subregional Area, 2020

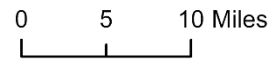


Depression

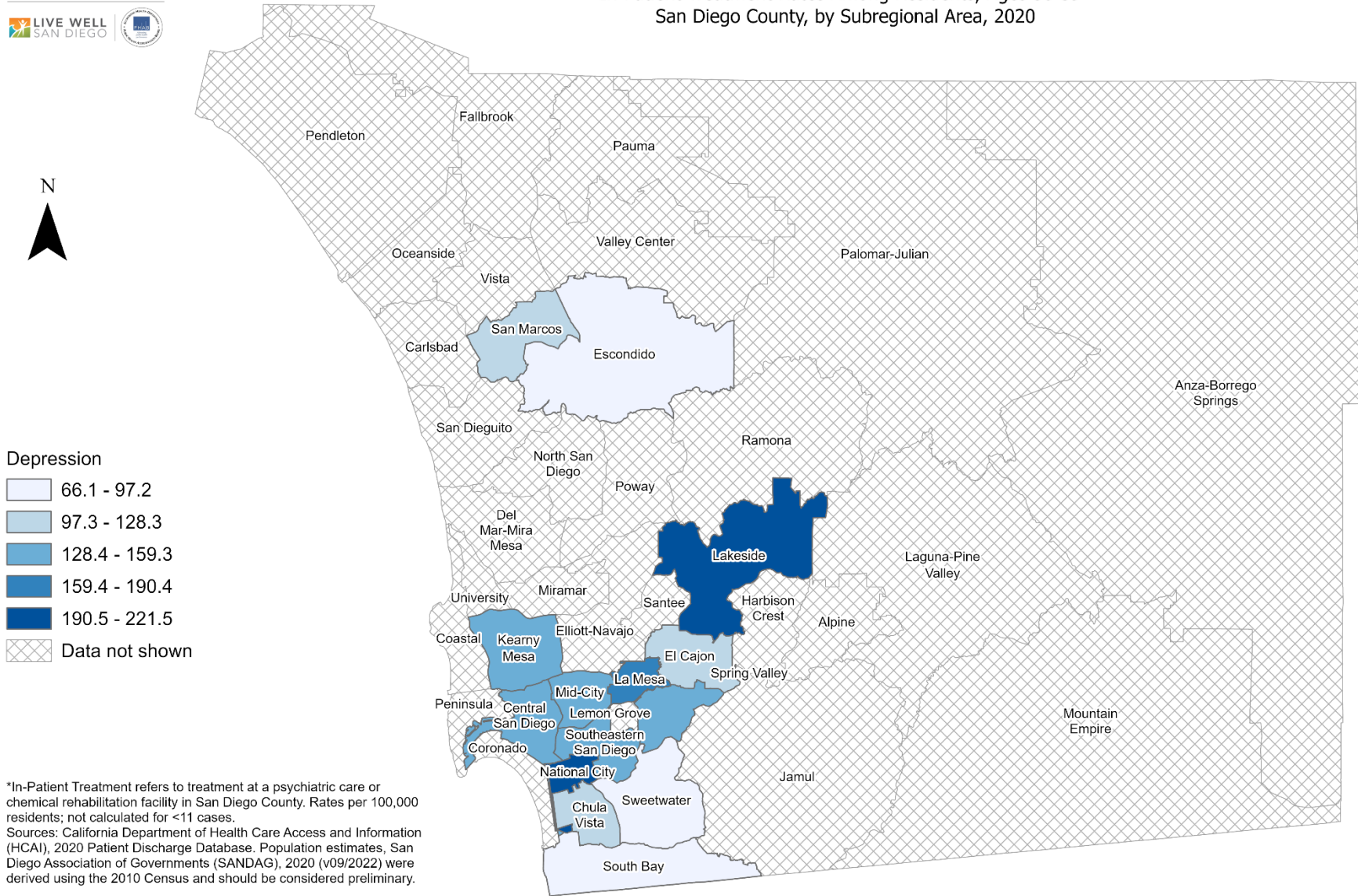
- 72.6 - 86.3
- 86.4 - 100.0
- 100.1 - 113.7
- 113.8 - 127.4
- 127.5 - 141.1
- Data not shown

*In-Patient Treatment refers to treatment at a psychiatric care or chemical rehabilitation facility in San Diego County. Rates per 100,000 residents; not calculated for <11 cases.
Sources: California Department of Health Care Access and Information (HCAI), 2020 Patient Discharge Database. Population estimates, San Diego Association of Governments (SANDAG), 2020 (v09/2022) were derived using the 2010 Census and should be considered preliminary.

Maps & Analysis by County of San Diego, Health and Human Services Agency, Public Health Services, Community Health Statistics Unit.
Contact 619.692.6672. https://www.sandiegocounty.gov/hhsa/programs/phs/community_health_statistics/.
March, 2023.
LiveWellSD.org.



In-Patient Treatment Rates Among Residents, Ages 50-59* San Diego County, by Subregional Area, 2020

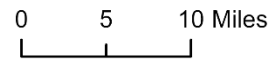


Depression

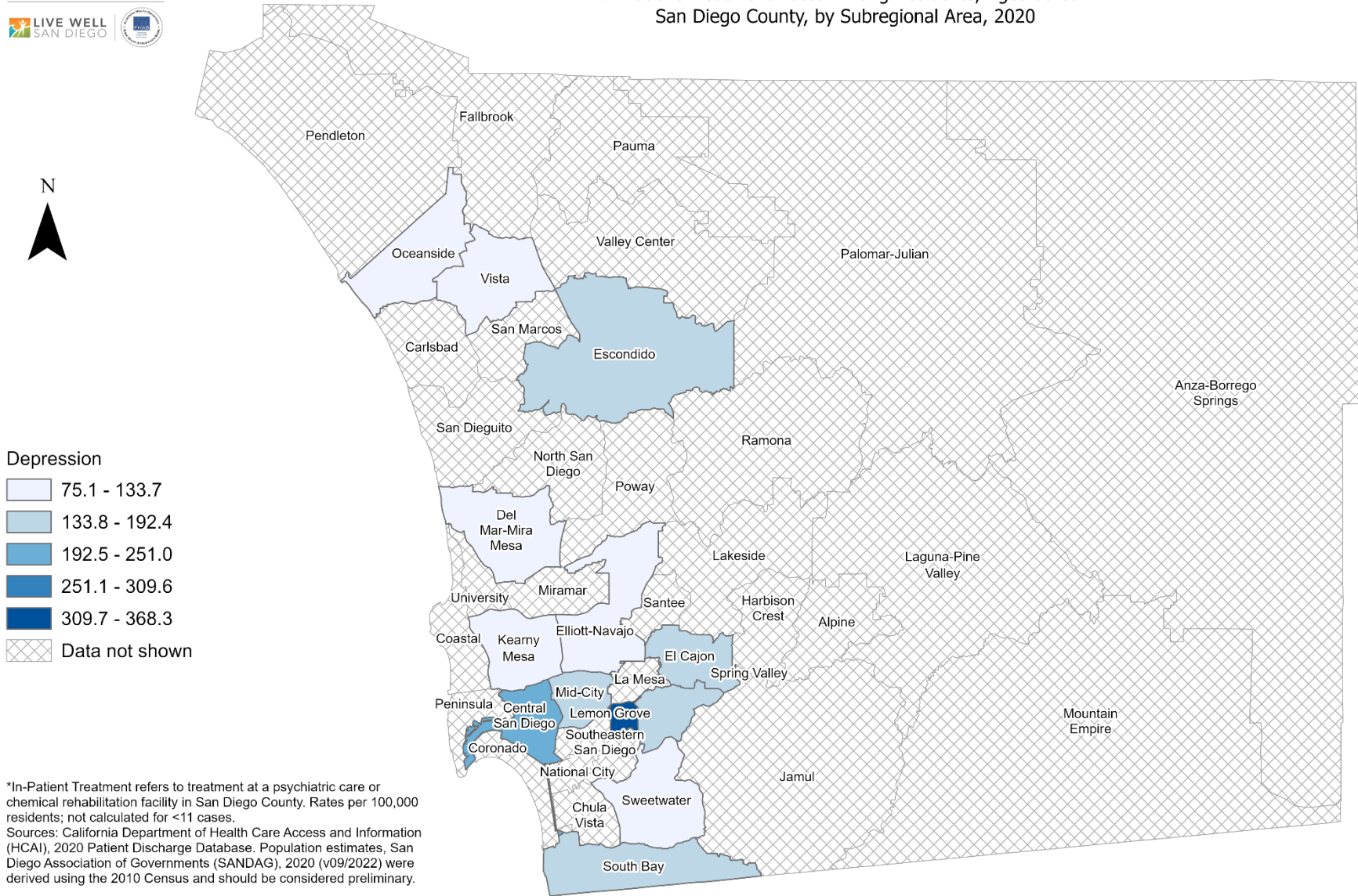
- 66.1 - 97.2
- 97.3 - 128.3
- 128.4 - 159.3
- 159.4 - 190.4
- 190.5 - 221.5
- Data not shown

*In-Patient Treatment refers to treatment at a psychiatric care or chemical rehabilitation facility in San Diego County. Rates per 100,000 residents; not calculated for <11 cases.
Sources: California Department of Health Care Access and Information (HCAI), 2020 Patient Discharge Database. Population estimates, San Diego Association of Governments (SANDAG), 2020 (v09/2022) were derived using the 2010 Census and should be considered preliminary.

Maps & Analysis by County of San Diego, Health and Human Services Agency, Public Health Services, Community Health Statistics Unit.
Contact 619.692.6672. https://www.sandiegocounty.gov/hhsa/programs/phs/community_health_statistics/.
March, 2023.
LiveWellSD.org.



In-Patient Treatment Rates Among Residents, Ages 60-69* San Diego County, by Subregional Area, 2020



Depression

- 75.1 - 133.7
- 133.8 - 192.4
- 192.5 - 251.0
- 251.1 - 309.6
- 309.7 - 368.3
- Data not shown

*In-Patient Treatment refers to treatment at a psychiatric care or chemical rehabilitation facility in San Diego County. Rates per 100,000 residents; not calculated for <11 cases.
Sources: California Department of Health Care Access and Information (HCAI), 2020 Patient Discharge Database. Population estimates, San Diego Association of Governments (SANDAG), 2020 (v09/2022) were derived using the 2010 Census and should be considered preliminary.

Maps & Analysis by County of San Diego, Health and Human Services Agency, Public Health Services, Community Health Statistics Unit.
Contact 619.692.6672. https://www.sandiegocounty.gov/hhsa/programs/phs/community_health_statistics/.
March, 2023.
LiveWellSD.org.

