

# MAP ATLAS

## Hip Fractures San Diego County, 2020

---

APRIL 2023

---

County of San Diego | Health and Human  
Services Agency | Public Health Services |  
Community Health Statistics Unit



## Data Sources - San Diego County, 2020

**Death\*** is based on underlying cause of death among San Diego County residents. Rates calculated per 100,000 residents. Rates not calculated for < 11 cases. Maps not produced for conditions/outcomes with no SRA-level rates. Some sections may have no maps.

Sources: California Department of Public Health, Center for Health Statistics, Office of Health Information and Research, Vital Records Business Intelligence System (VRBIS), 2020. ***The COVID-19 pandemic was associated with increases in all-cause mortality. COVID-19 deaths have affected the patterns of mortality including age-adjusted measures.*** SANDAG: San Diego Association of Governments (SANDAG) Population Estimates, 2020 (v09/2022). ***Population estimates for 2020 were derived using the 2010 Census and data should be considered preliminary.***

\*For substance/drug overdoses, death rate is based on the multiple/contributing cause of death among San Diego County residents.

**Hospitalization** refers to treatment at a general acute care facility in San Diego County. Rates calculated per 100,000 residents. Rates not calculated for < 11 cases. Maps not produced for conditions/outcomes with no SRA-level rates. Some sections may have no maps.

Sources: California Department of Health Care Access and Information (HCAI), Patient Discharge Database, 2020. San Diego Association of Governments (SANDAG) Population Estimates, 2020 (v09/2022). ***Population estimates for 2020 were derived using the 2010 Census and data should be considered preliminary.***

**Emergency Department (ED) Discharge** refers to treatment at an ED facility in San Diego County.

Rates calculated per 100,000 residents. Rates not calculated for < 11 cases. Maps not produced for conditions/outcomes with no SRA-level rates. Some sections may have no maps.

Sources: California Department of Health Care Access and Information (HCAI), Emergency Department Discharge Database, 2020. San Diego Association of Governments (SANDAG) Population Estimates, 2020 (v09/2022). ***Population estimates for 2020 were derived using the 2010 Census and data should be considered preliminary.***

**In-Patient Treatment (IPT)** refers to treatment at a psychiatric care or chemical rehabilitation facility in San Diego County. Rates calculated per 100,000 residents. Rates not calculated for < 11 cases. Maps not produced for conditions/outcomes with no SRA-level rates. Some sections may have no maps.

Sources: California Department of Health Care Access and Information (HCAI), Patient Discharge Database, 2020. San Diego Association of Governments (SANDAG) Population Estimates, 2020 (v09/2022). ***Population estimates for 2020 were derived using the 2010 Census and data should be considered preliminary.***

Maps & Analysis by County of San Diego, Health and Human Services Agency, Public Health Services, Community Health Statistics Unit. Contact 619.692.6672. March 2023.

[https://www.sandiegocounty.gov/hhsa/programs/phs/community\\_health\\_statistics/](https://www.sandiegocounty.gov/hhsa/programs/phs/community_health_statistics/)

LiveWellSD.org.

For more detailed explanation of geography, methods, and sources, please refer to CHSU's [2020 Community Profiles Data Guide and Data Dictionary Dashboards](#).

# Table of Contents

Section 1: Deaths .....	1
Section 2: Hospitalizations .....	3
Section 3: Emergency Department (ED) Discharges .....	10
Section 4: In-Patient Treatments (IPT).....	15

# SECTION 1

## **Death Rates Among San Diego County Residents by Demographics, 2020:**

- Total Rate
- Race/Ethnicity
  - Asian/Pacific Islander (API)
  - Black
  - Hispanic
  - White
- Age Group
  - 0-9 Years
  - 10-19 Years
  - 20-29 Years
  - 30-39 Years
  - 40-49 Years
  - 50-59 Years
  - 60-69 Years
  - 70-79 Years
  - 80+ Years



**No SRA-level rate data  
available for this section.**

# SECTION 2

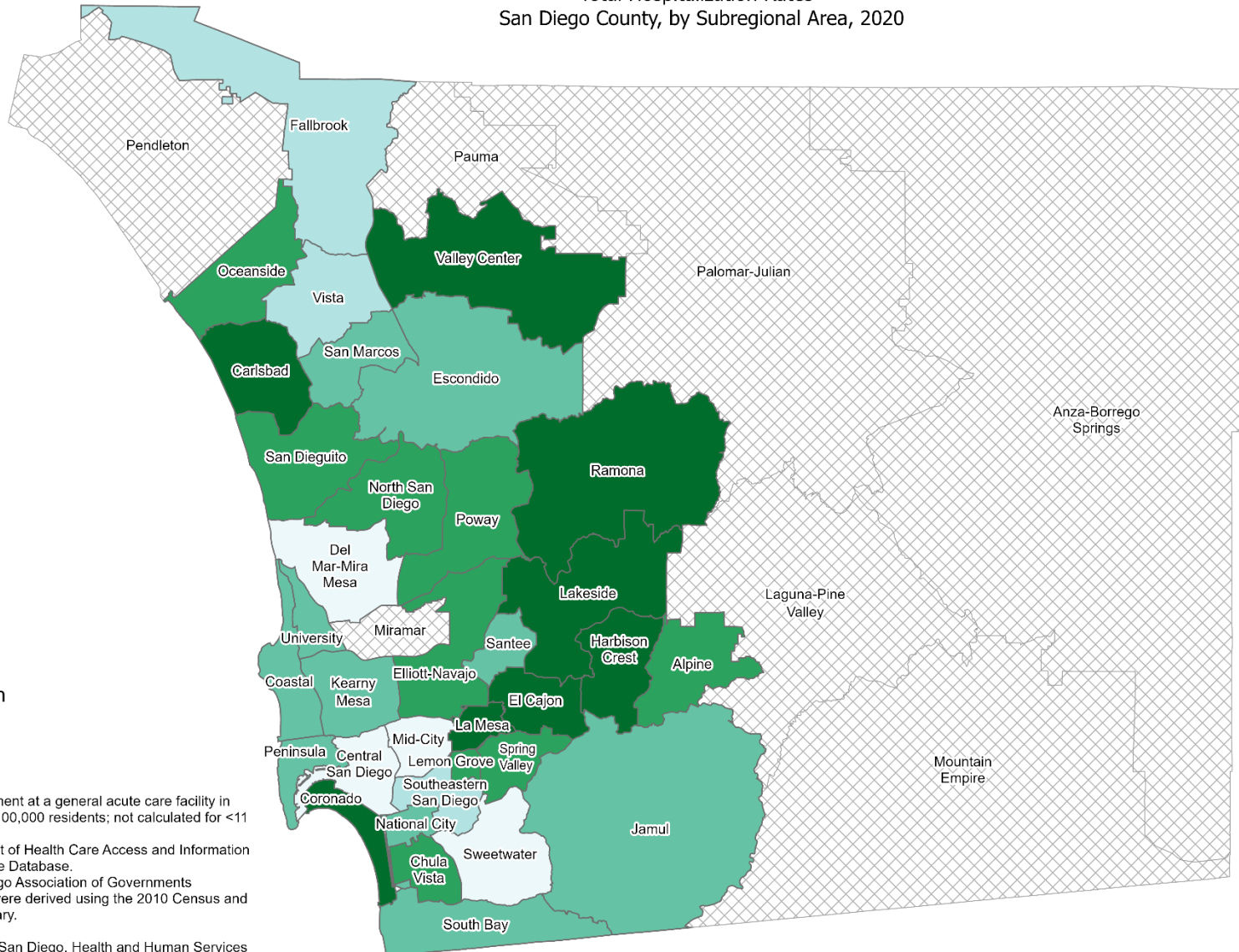
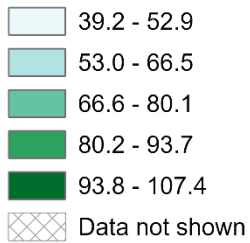
## **Hospitalization Rates Among San Diego County Residents by Demographics, 2020:**

- Total Rate
- Race/Ethnicity
  - Asian/Pacific Islander (API)
  - Black
  - Hispanic
  - White
- Age Group
  - 0-9 Years
  - 10-19 Years
  - 20-29 Years
  - 30-39 Years
  - 40-49 Years
  - 50-59 Years
  - 60-69 Years
  - 70-79 Years
  - 80+ Years

### Total Hospitalization Rates\* San Diego County, by Subregional Area, 2020



#### Hip Fractures

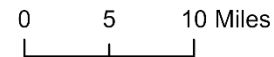


\*Hospitalization refers to treatment at a general acute care facility in San Diego County. Rates per 100,000 residents; not calculated for <11 cases.

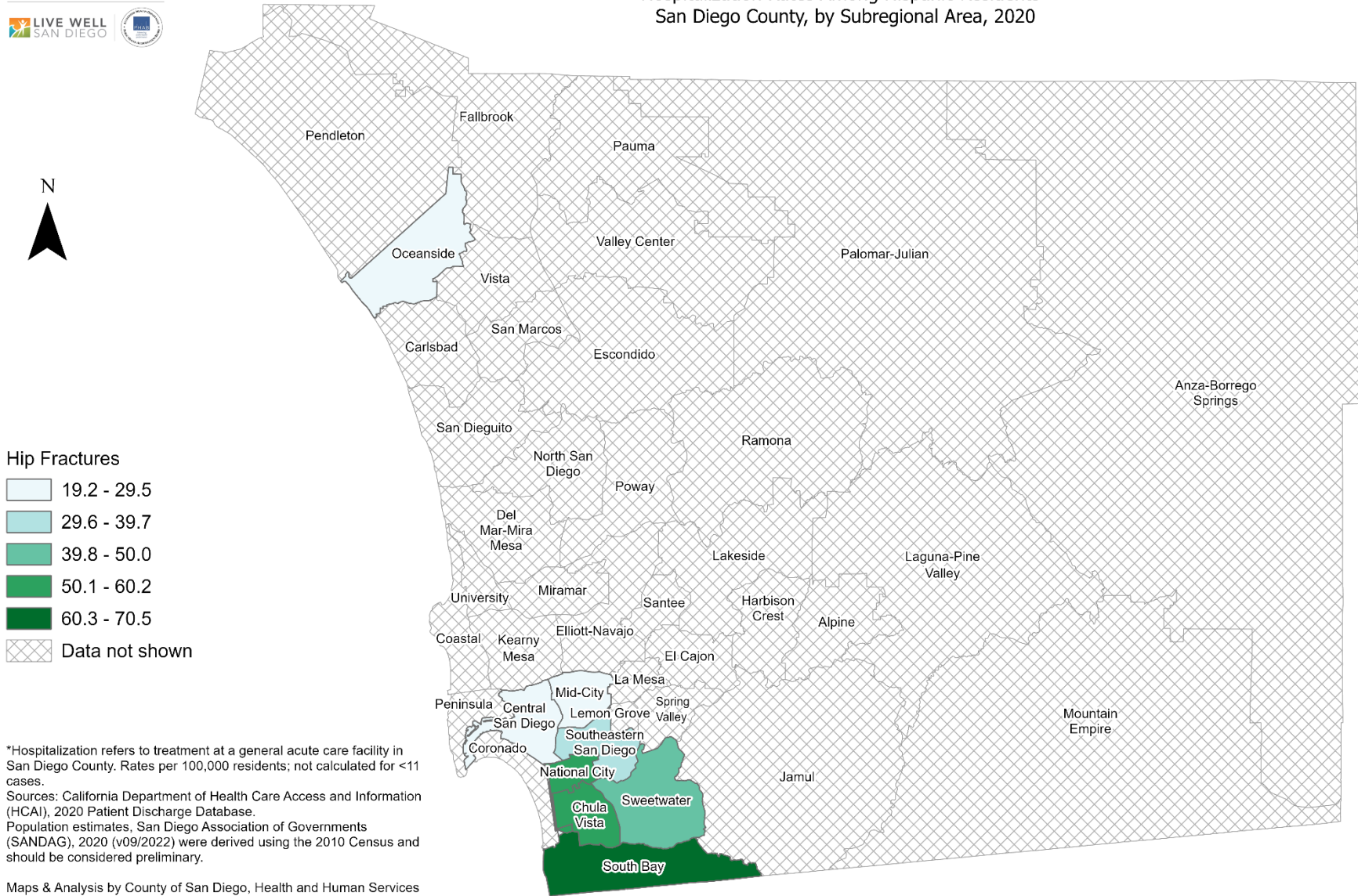
Sources: California Department of Health Care Access and Information (HCAI), 2020 Patient Discharge Database.

Population estimates, San Diego Association of Governments (SANDAG), 2020 (v09/2022) were derived using the 2010 Census and should be considered preliminary.

Maps & Analysis by County of San Diego, Health and Human Services Agency, Public Health Services, Community Health Statistics Unit.  
Contact 619.692.6672. [https://www.sandiegocounty.gov/hhsa/programs/phs/community\\_health\\_statistics/](https://www.sandiegocounty.gov/hhsa/programs/phs/community_health_statistics/).  
March, 2023.  
LiveWellSD.org.



### Hospitalization Rates Among Hispanic Residents\* San Diego County, by Subregional Area, 2020

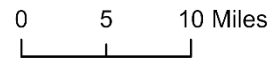


**Hip Fractures**

- 19.2 - 29.5
- 29.6 - 39.7
- 39.8 - 50.0
- 50.1 - 60.2
- 60.3 - 70.5
- Data not shown

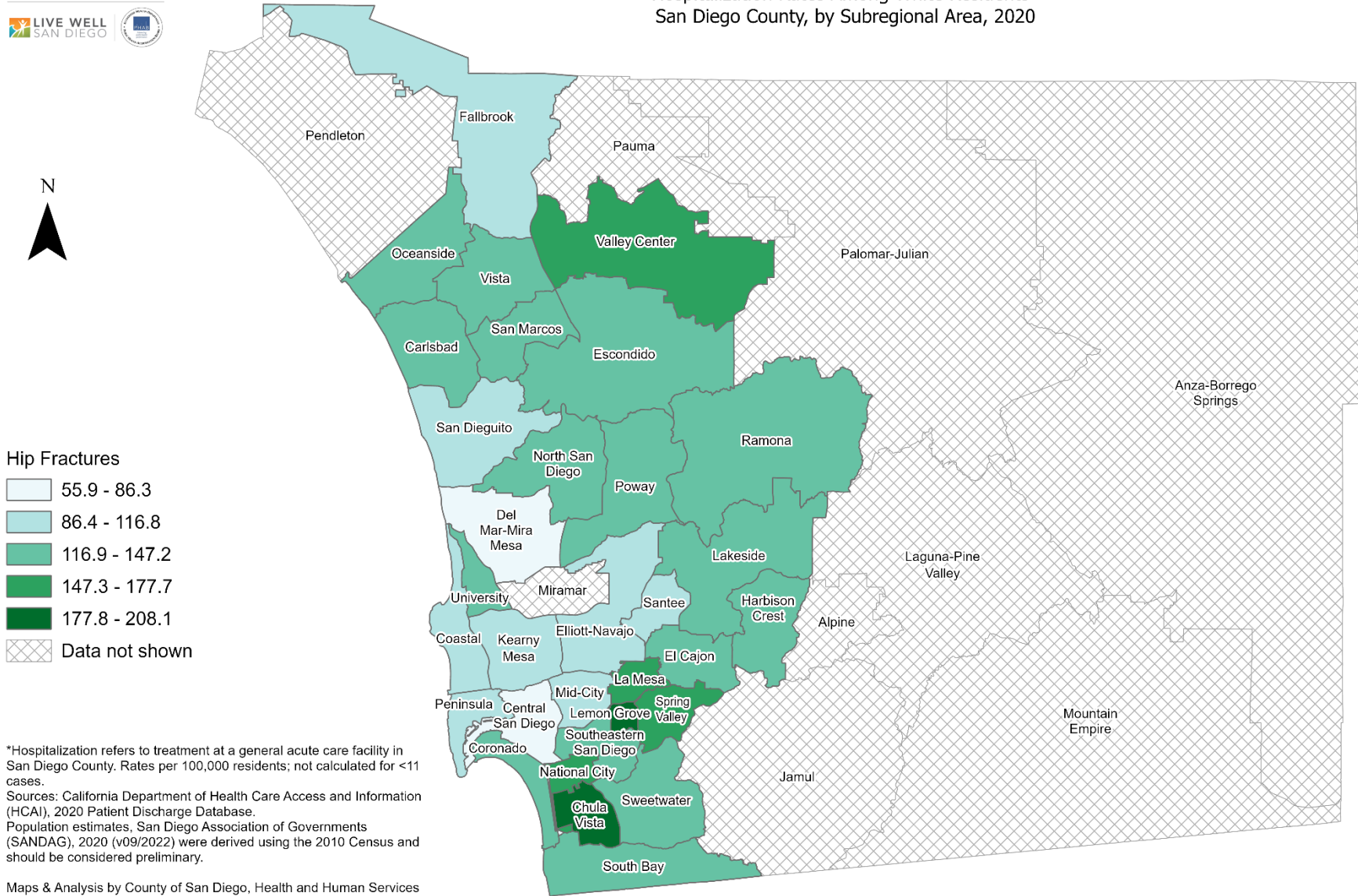
\*Hospitalization refers to treatment at a general acute care facility in San Diego County. Rates per 100,000 residents; not calculated for <11 cases.  
Sources: California Department of Health Care Access and Information (HCAI), 2020 Patient Discharge Database.  
Population estimates, San Diego Association of Governments (SANDAG), 2020 (v09/2022) were derived using the 2010 Census and should be considered preliminary.

Maps & Analysis by County of San Diego, Health and Human Services Agency, Public Health Services, Community Health Statistics Unit.  
Contact 619.692.6672. [https://www.sandiegocounty.gov/hhsa/programs/phs/community\\_health\\_statistics/](https://www.sandiegocounty.gov/hhsa/programs/phs/community_health_statistics/).  
March, 2023.  
LiveWellSD.org.





### Hospitalization Rates Among White Residents\* San Diego County, by Subregional Area, 2020

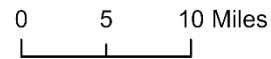


**Hip Fractures**

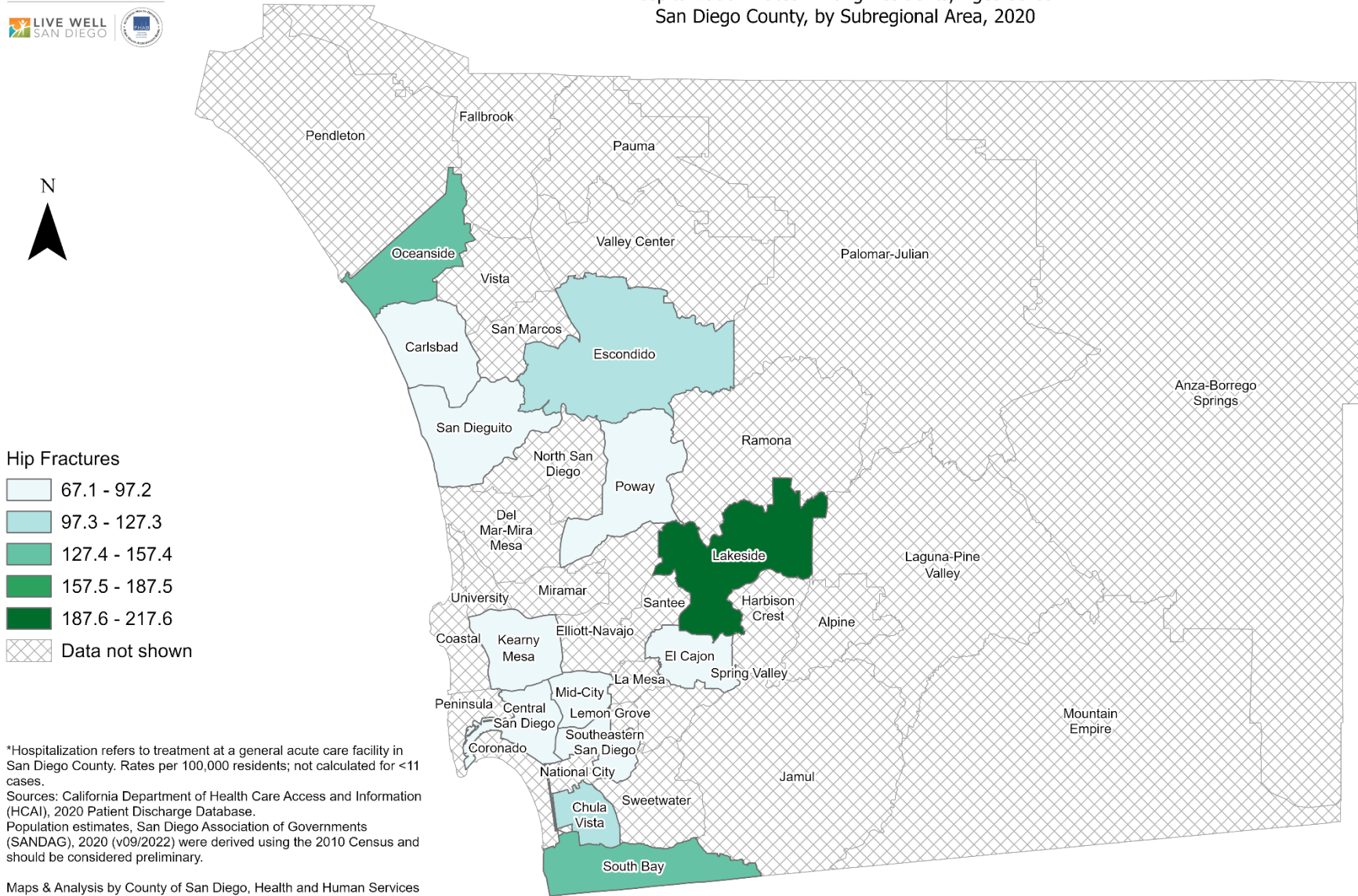
- 55.9 - 86.3
- 86.4 - 116.8
- 116.9 - 147.2
- 147.3 - 177.7
- 177.8 - 208.1
- Data not shown

\*Hospitalization refers to treatment at a general acute care facility in San Diego County. Rates per 100,000 residents; not calculated for <11 cases.  
Sources: California Department of Health Care Access and Information (HCAI), 2020 Patient Discharge Database.  
Population estimates, San Diego Association of Governments (SANDAG), 2020 (v09/2022) were derived using the 2010 Census and should be considered preliminary.

Maps & Analysis by County of San Diego, Health and Human Services Agency, Public Health Services, Community Health Statistics Unit.  
Contact 619.692.6672. [https://www.sandiegocounty.gov/hhsa/programs/phs/community\\_health\\_statistics/](https://www.sandiegocounty.gov/hhsa/programs/phs/community_health_statistics/).  
March, 2023.  
LiveWellSD.org.



### Hospitalization Rates Among Residents, Ages 60-69\* San Diego County, by Subregional Area, 2020

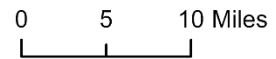


**Hip Fractures**

- 67.1 - 97.2
- 97.3 - 127.3
- 127.4 - 157.4
- 157.5 - 187.5
- 187.6 - 217.6
- Data not shown

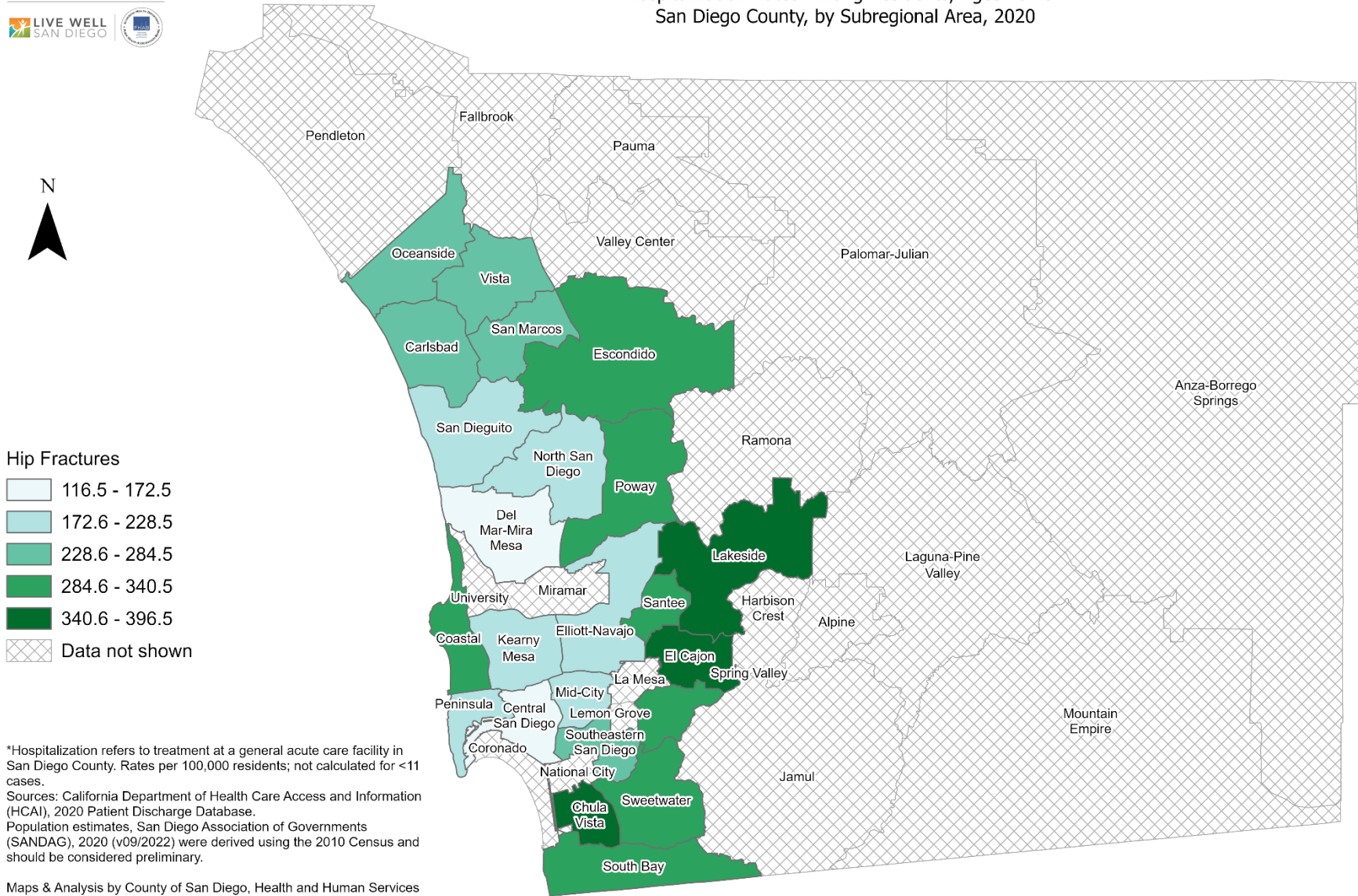
\*Hospitalization refers to treatment at a general acute care facility in San Diego County. Rates per 100,000 residents; not calculated for <11 cases.  
Sources: California Department of Health Care Access and Information (HCAI), 2020 Patient Discharge Database.  
Population estimates, San Diego Association of Governments (SANDAG), 2020 (v09/2022) were derived using the 2010 Census and should be considered preliminary.

Maps & Analysis by County of San Diego, Health and Human Services Agency, Public Health Services, Community Health Statistics Unit.  
Contact 619.692.6672. [https://www.sandiegocounty.gov/hhsa/programs/phs/community\\_health\\_statistics/](https://www.sandiegocounty.gov/hhsa/programs/phs/community_health_statistics/).  
March, 2023.  
LiveWellSD.org.



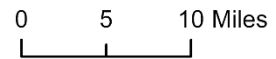


### Hospitalization Rates Among Residents, Ages 70-79\* San Diego County, by Subregional Area, 2020



\*Hospitalization refers to treatment at a general acute care facility in San Diego County. Rates per 100,000 residents; not calculated for <11 cases.  
Sources: California Department of Health Care Access and Information (HCAI), 2020 Patient Discharge Database.  
Population estimates, San Diego Association of Governments (SANDAG), 2020 (v09/2022) were derived using the 2010 Census and should be considered preliminary.

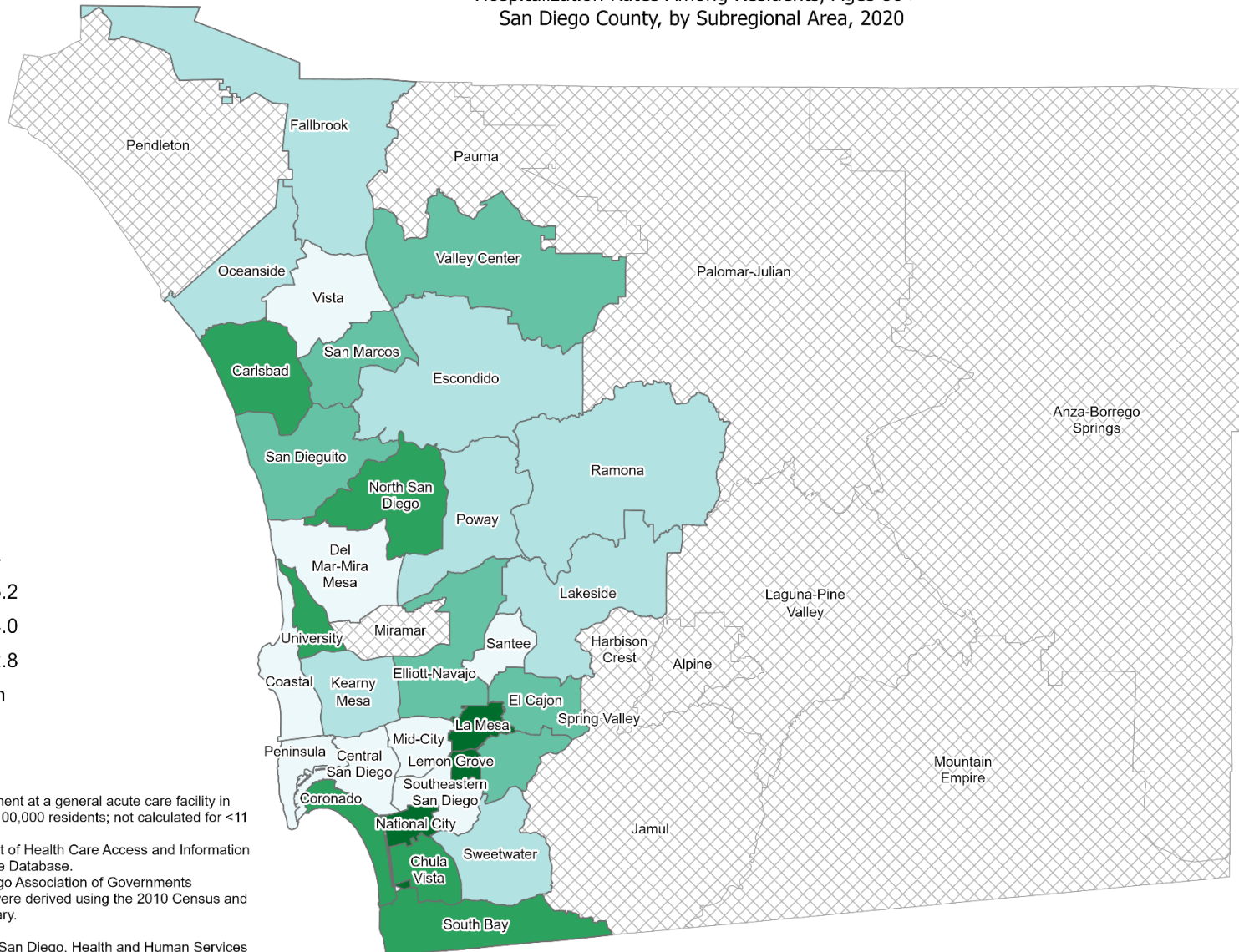
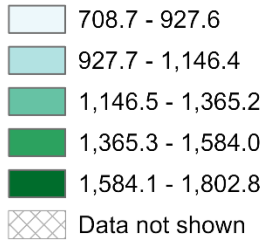
Maps & Analysis by County of San Diego, Health and Human Services Agency, Public Health Services, Community Health Statistics Unit.  
Contact 619.692.6672. [https://www.sandiegocounty.gov/hhsa/programs/phs/community\\_health\\_statistics/](https://www.sandiegocounty.gov/hhsa/programs/phs/community_health_statistics/).  
March, 2023.  
LiveWellSD.org.



### Hospitalization Rates Among Residents, Ages 80+\* San Diego County, by Subregional Area, 2020

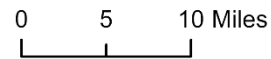


#### Hip Fractures



\*Hospitalization refers to treatment at a general acute care facility in San Diego County. Rates per 100,000 residents; not calculated for <11 cases.  
Sources: California Department of Health Care Access and Information (HCAI), 2020 Patient Discharge Database.  
Population estimates, San Diego Association of Governments (SANDAG), 2020 (v09/2022) were derived using the 2010 Census and should be considered preliminary.

Maps & Analysis by County of San Diego, Health and Human Services Agency, Public Health Services, Community Health Statistics Unit.  
Contact 619.692.6672. [https://www.sandiegocounty.gov/hhsa/programs/phs/community\\_health\\_statistics/](https://www.sandiegocounty.gov/hhsa/programs/phs/community_health_statistics/).  
March, 2023.  
LiveWellSD.org.



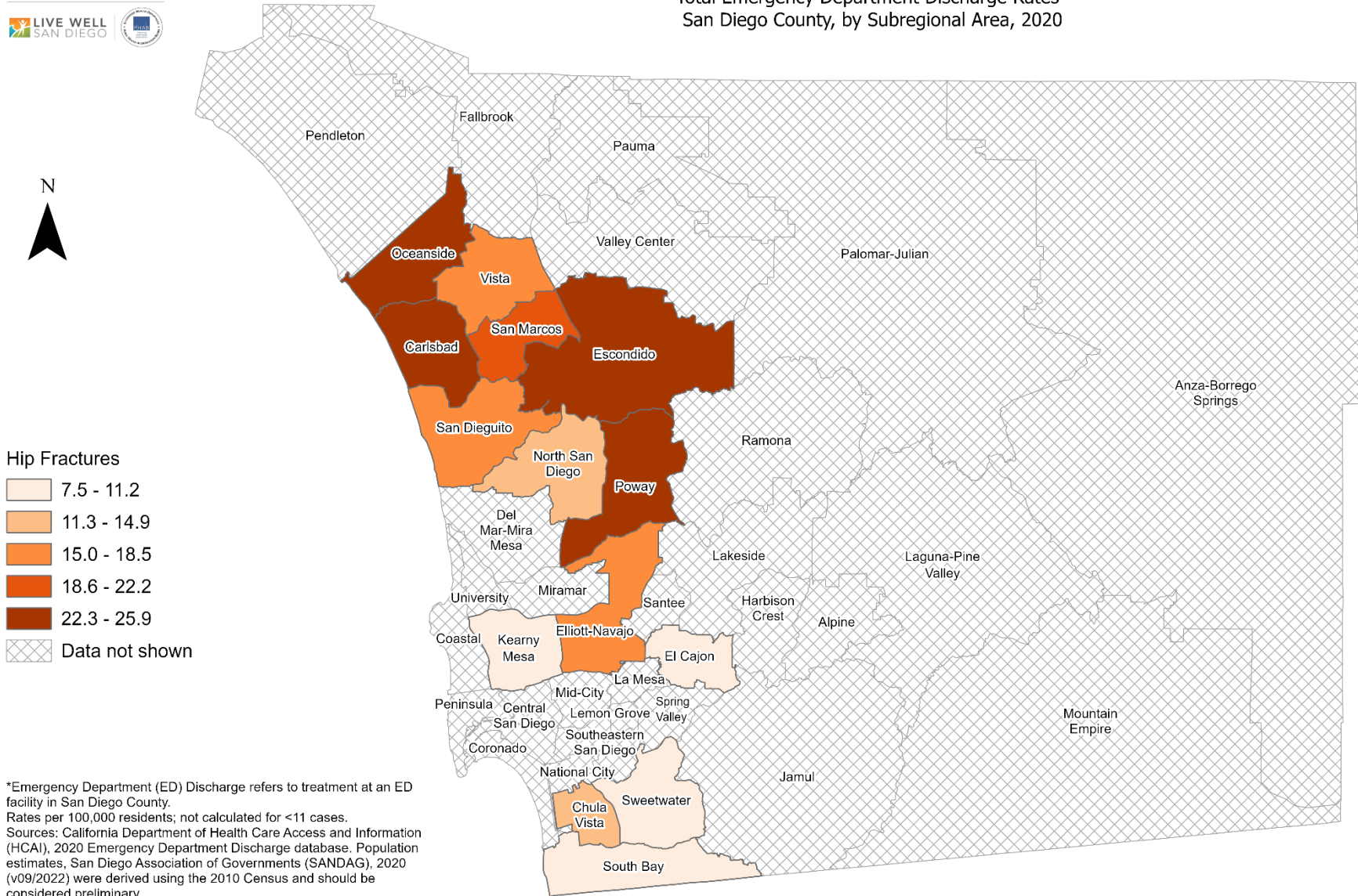


# SECTION 3

## **Emergency Department (ED) Discharge Rates Among San Diego County Residents by Demographics, 2020:**

- Total Rate
- Race/Ethnicity
  - Asian/Pacific Islander (API)
  - Black
  - Hispanic
  - White
- Age Group
  - 0-9 Years
  - 10-19 Years
  - 20-29 Years
  - 30-39 Years
  - 40-49 Years
  - 50-59 Years
  - 60-69 Years
  - 70-79 Years
  - 80+ Years

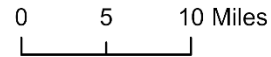
### Total Emergency Department Discharge Rates\* San Diego County, by Subregional Area, 2020



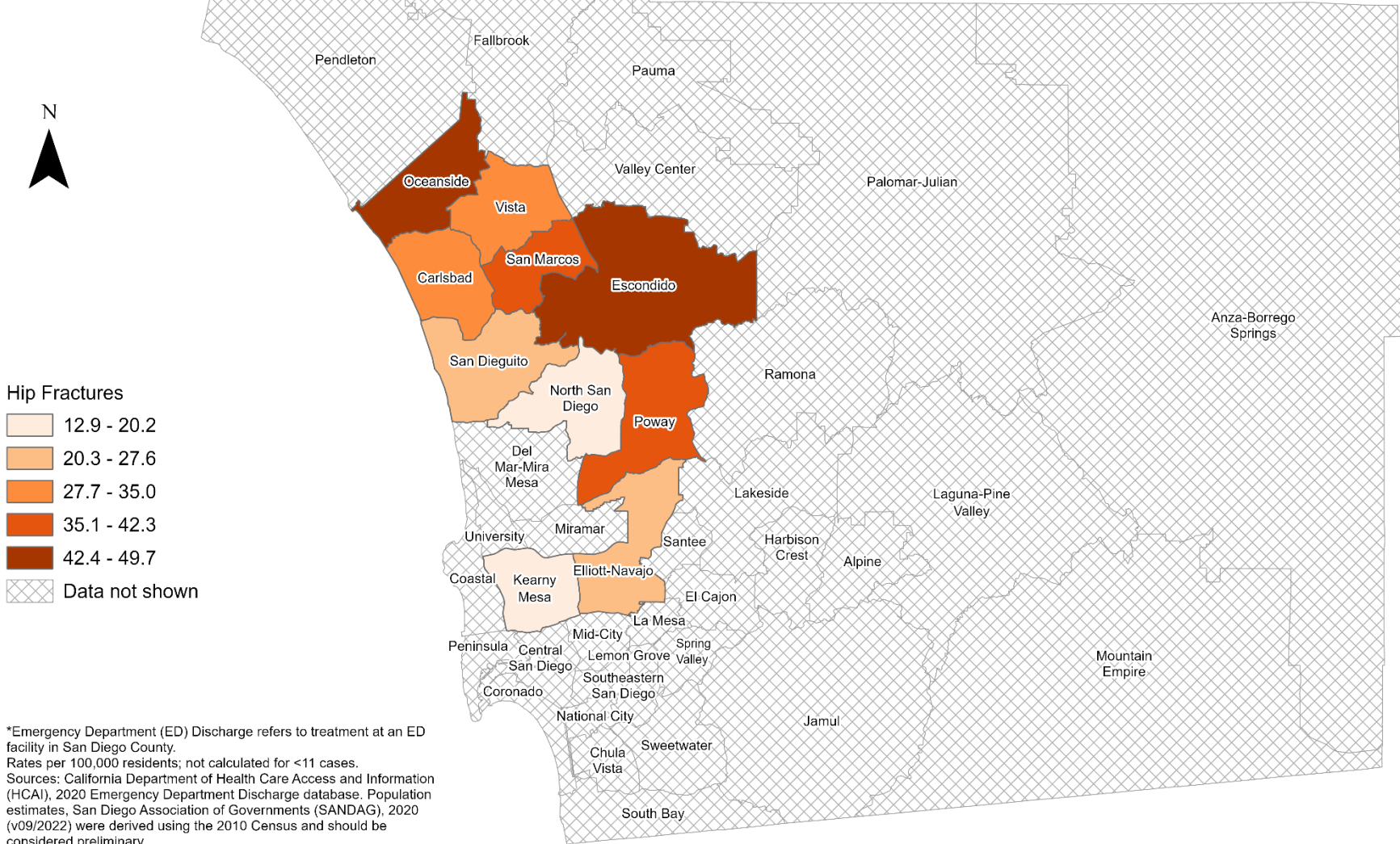
**Hip Fractures**

- 7.5 - 11.2
- 11.3 - 14.9
- 15.0 - 18.5
- 18.6 - 22.2
- 22.3 - 25.9
- Data not shown

\*Emergency Department (ED) Discharge refers to treatment at an ED facility in San Diego County. Rates per 100,000 residents; not calculated for <11 cases. Sources: California Department of Health Care Access and Information (HCAI), 2020 Emergency Department Discharge database. Population estimates, San Diego Association of Governments (SANDAG), 2020 (v09/2022) were derived using the 2010 Census and should be considered preliminary.



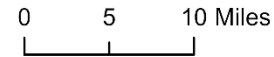
### Emergency Department Discharge Rates Among White Residents\* San Diego County, by Subregional Area, 2020



**Hip Fractures**

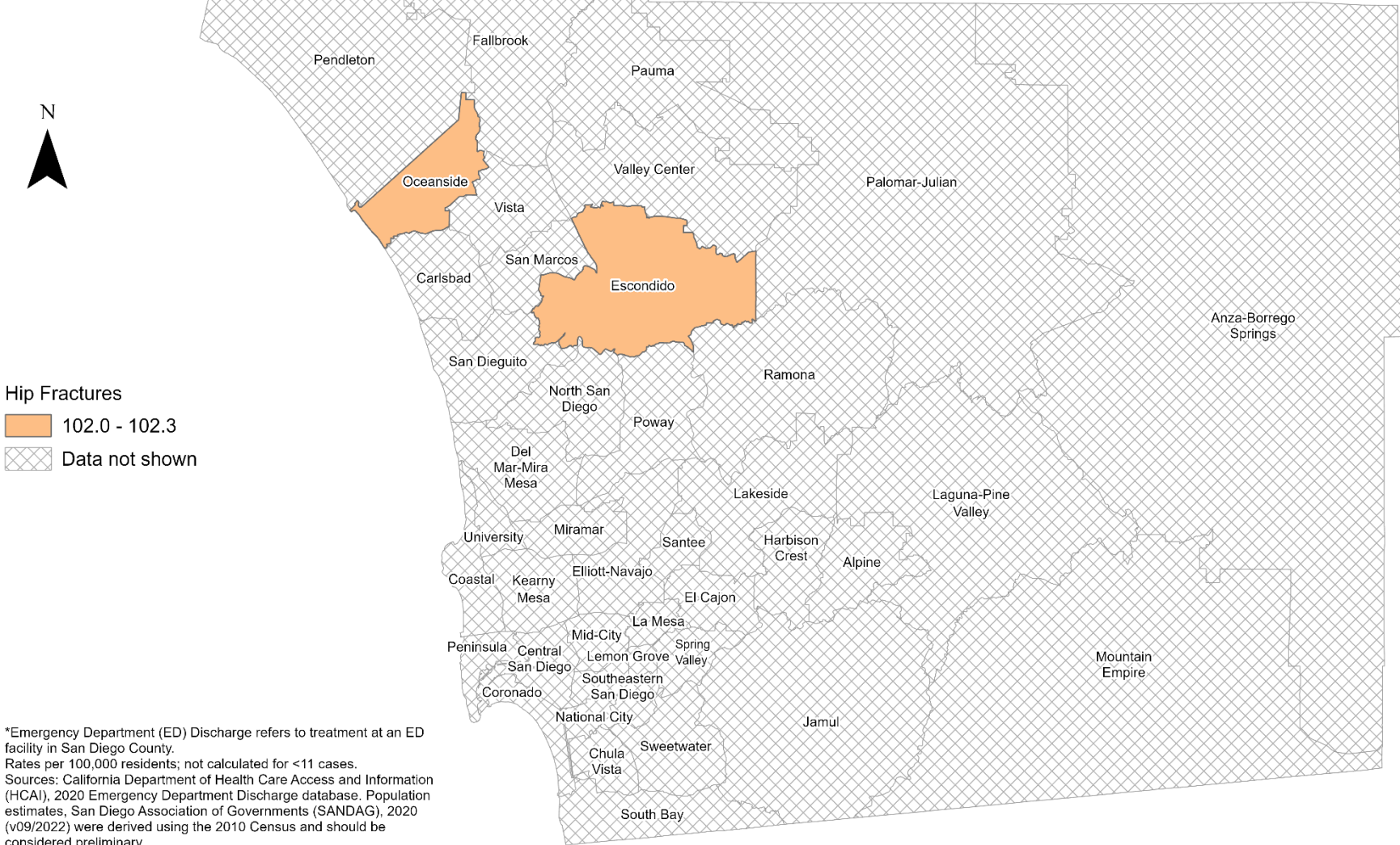
- 12.9 - 20.2
- 20.3 - 27.6
- 27.7 - 35.0
- 35.1 - 42.3
- 42.4 - 49.7
- Data not shown

\*Emergency Department (ED) Discharge refers to treatment at an ED facility in San Diego County. Rates per 100,000 residents; not calculated for <11 cases. Sources: California Department of Health Care Access and Information (HCAI), 2020 Emergency Department Discharge database. Population estimates, San Diego Association of Governments (SANDAG), 2020 (v09/2022) were derived using the 2010 Census and should be considered preliminary.



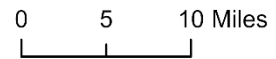


### Emergency Department Discharge Rates Among Residents, Ages 70-79\* San Diego County, by Subregional Area, 2020

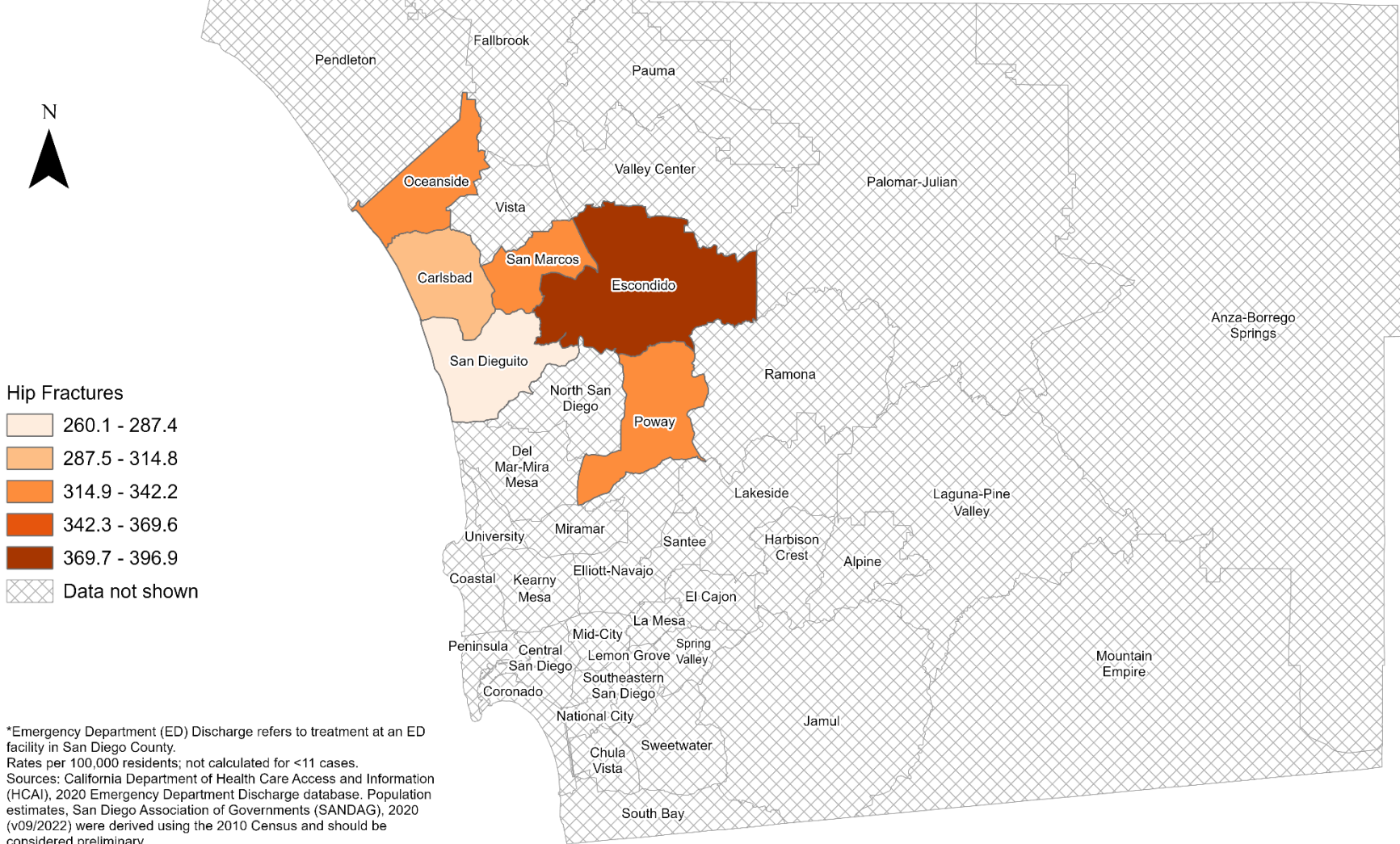


\*Emergency Department (ED) Discharge refers to treatment at an ED facility in San Diego County. Rates per 100,000 residents; not calculated for <11 cases. Sources: California Department of Health Care Access and Information (HCAI), 2020 Emergency Department Discharge database. Population estimates, San Diego Association of Governments (SANDAG), 2020 (v09/2022) were derived using the 2010 Census and should be considered preliminary.

Maps & Analysis by County of San Diego, Health and Human Services Agency, Public Health Services, Community Health Statistics Unit. Contact 619.692.6672. [https://www.sandiegocounty.gov/hhsa/programs/phs/community\\_health\\_statistics/](https://www.sandiegocounty.gov/hhsa/programs/phs/community_health_statistics/). March, 2023. LiveWellSD.org.



### Emergency Department Discharge Rates Among Residents, Ages 80+\* San Diego County, by Subregional Area, 2020

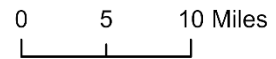


**Hip Fractures**

- 260.1 - 287.4
- 287.5 - 314.8
- 314.9 - 342.2
- 342.3 - 369.6
- Data not shown

\*Emergency Department (ED) Discharge refers to treatment at an ED facility in San Diego County. Rates per 100,000 residents; not calculated for <11 cases. Sources: California Department of Health Care Access and Information (HCAI), 2020 Emergency Department Discharge database. Population estimates, San Diego Association of Governments (SANDAG), 2020 (v09/2022) were derived using the 2010 Census and should be considered preliminary.

Maps & Analysis by County of San Diego, Health and Human Services Agency, Public Health Services, Community Health Statistics Unit. Contact 619.692.6672. [https://www.sandiegocounty.gov/hhsa/programs/phs/community\\_health\\_statistics/](https://www.sandiegocounty.gov/hhsa/programs/phs/community_health_statistics/). March, 2023. LiveWellSD.org.



# SECTION 4

## **In-Patient Treatment (IPT) Rates Among San Diego County Residents by Demographics, 2020:**

- Total Rate
- Race/Ethnicity
  - Asian/Pacific Islander (API)
  - Black
  - Hispanic
  - White
- Age Group
  - 0-9 Years
  - 10-19 Years
  - 20-29 Years
  - 30-39 Years
  - 40-49 Years
  - 50-59 Years
  - 60-69 Years
  - 70-79 Years
  - 80+ Years

**No SRA-level rate data  
available for this section.**