

# MAP ATLAS

## Mood Disorders San Diego County, 2020

---

APRIL 2023

---

County of San Diego | Health and Human  
Services Agency | Public Health Services |  
Community Health Statistics Unit



## Data Sources - San Diego County, 2020

**Death\*** is based on underlying cause of death among San Diego County residents. Rates calculated per 100,000 residents. Rates not calculated for < 11 cases. Maps not produced for conditions/outcomes with no SRA-level rates. Some sections may have no maps.

Sources: California Department of Public Health, Center for Health Statistics, Office of Health Information and Research, Vital Records Business Intelligence System (VRBIS), 2020. ***The COVID-19 pandemic was associated with increases in all-cause mortality. COVID-19 deaths have affected the patterns of mortality including age-adjusted measures.*** SANDAG: San Diego Association of Governments (SANDAG) Population Estimates, 2020 (v09/2022). ***Population estimates for 2020 were derived using the 2010 Census and data should be considered preliminary.***

\*For substance/drug overdoses, death rate is based on the multiple/contributing cause of death among San Diego County residents.

**Hospitalization** refers to treatment at a general acute care facility in San Diego County. Rates calculated per 100,000 residents. Rates not calculated for < 11 cases. Maps not produced for conditions/outcomes with no SRA-level rates. Some sections may have no maps.

Sources: California Department of Health Care Access and Information (HCAI), Patient Discharge Database, 2020. San Diego Association of Governments (SANDAG) Population Estimates, 2020 (v09/2022). ***Population estimates for 2020 were derived using the 2010 Census and data should be considered preliminary.***

**Emergency Department (ED) Discharge** refers to treatment at an ED facility in San Diego County.

Rates calculated per 100,000 residents. Rates not calculated for < 11 cases. Maps not produced for conditions/outcomes with no SRA-level rates. Some sections may have no maps.

Sources: California Department of Health Care Access and Information (HCAI), Emergency Department Discharge Database, 2020. San Diego Association of Governments (SANDAG) Population Estimates, 2020 (v09/2022). ***Population estimates for 2020 were derived using the 2010 Census and data should be considered preliminary.***

**In-Patient Treatment (IPT)** refers to treatment at a psychiatric care or chemical rehabilitation facility in San Diego County. Rates calculated per 100,000 residents. Rates not calculated for < 11 cases. Maps not produced for conditions/outcomes with no SRA-level rates. Some sections may have no maps.

Sources: California Department of Health Care Access and Information (HCAI), Patient Discharge Database, 2020. San Diego Association of Governments (SANDAG) Population Estimates, 2020 (v09/2022). ***Population estimates for 2020 were derived using the 2010 Census and data should be considered preliminary.***

Maps & Analysis by County of San Diego, Health and Human Services Agency, Public Health Services, Community Health Statistics Unit. Contact 619.692.6672. March 2023.

[https://www.sandiegocounty.gov/hhsa/programs/phs/community\\_health\\_statistics/](https://www.sandiegocounty.gov/hhsa/programs/phs/community_health_statistics/)

LiveWellSD.org.

For more detailed explanation of geography, methods, and sources, please refer to CHSU's [2020 Community Profiles Data Guide and Data Dictionary Dashboards](#).

# Table of Contents

Section 1: Deaths .....	1
Section 2: Hospitalizations .....	3
Section 3: Emergency Department (ED) Discharges .....	6
Section 4: In-Patient Treatments (IPT).....	18

# SECTION 1

## **Death Rates Among San Diego County Residents by Demographics, 2020:**

- Total Rate
- Race/Ethnicity
  - Asian/Pacific Islander (API)
  - Black
  - Hispanic
  - White
- Age Group
  - 0-9 Years
  - 10-19 Years
  - 20-29 Years
  - 30-39 Years
  - 40-49 Years
  - 50-59 Years
  - 60-69 Years
  - 70-79 Years
  - 80+ Years

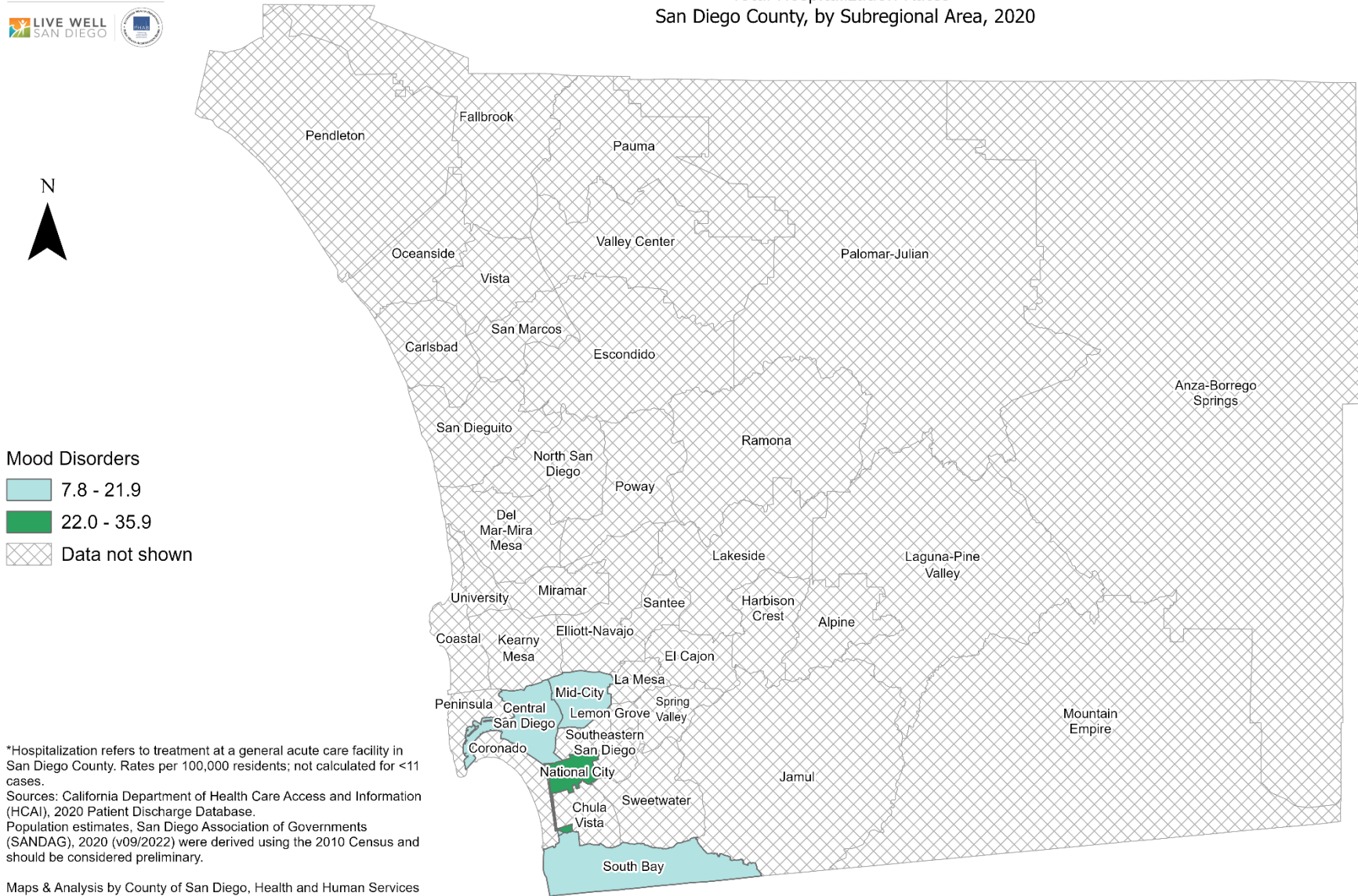
**No SRA-level rate data  
available for this section.**

# SECTION 2

## **Hospitalization Rates Among San Diego County Residents by Demographics, 2020:**

- Total Rate
- Race/Ethnicity
  - Asian/Pacific Islander (API)
  - Black
  - Hispanic
  - White
- Age Group
  - 0-9 Years
  - 10-19 Years
  - 20-29 Years
  - 30-39 Years
  - 40-49 Years
  - 50-59 Years
  - 60-69 Years
  - 70-79 Years
  - 80+ Years

### Total Hospitalization Rates\* San Diego County, by Subregional Area, 2020

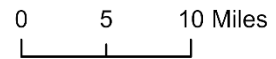


**Mood Disorders**

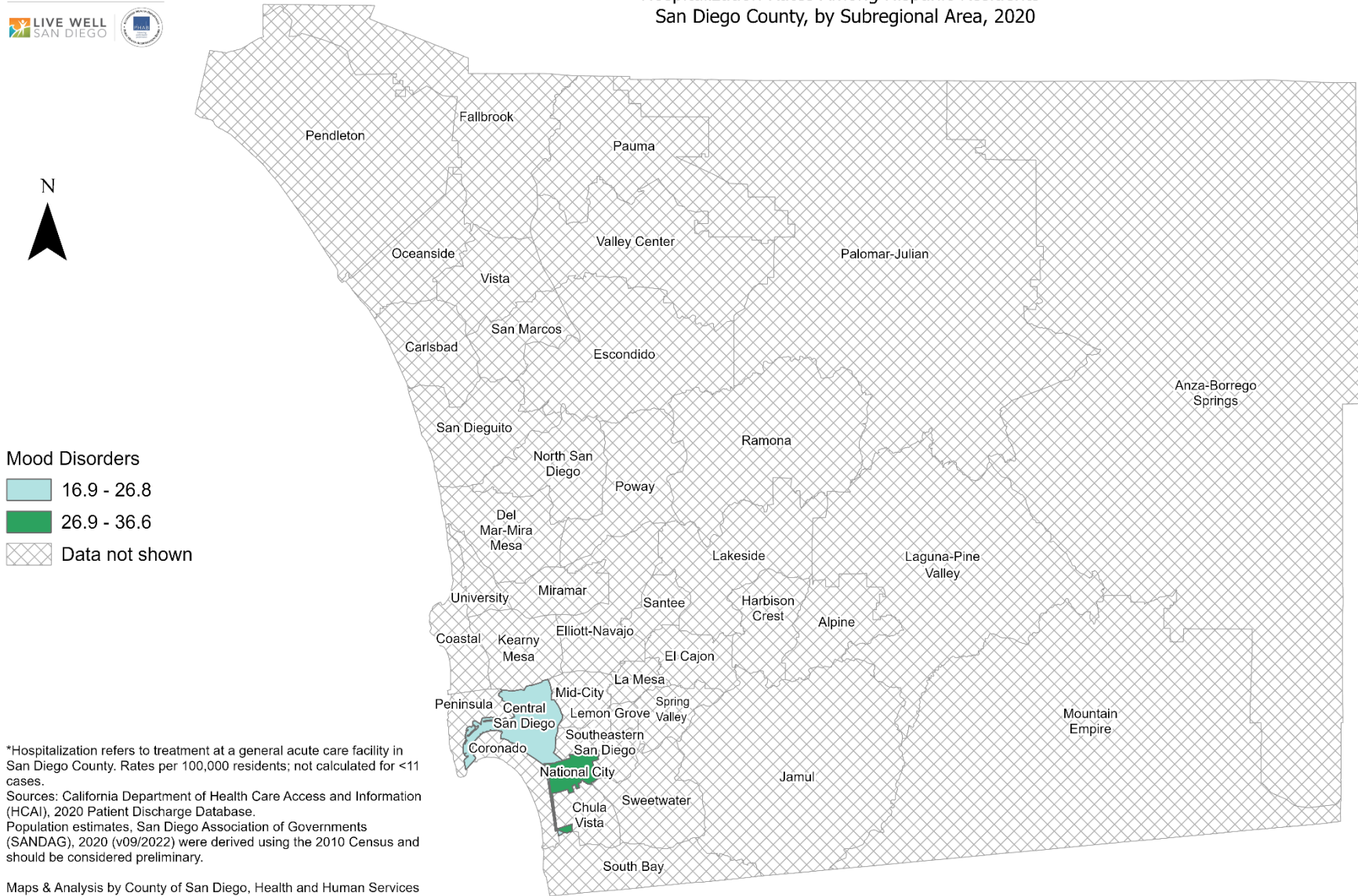
- 7.8 - 21.9
- 22.0 - 35.9
- Data not shown

\*Hospitalization refers to treatment at a general acute care facility in San Diego County. Rates per 100,000 residents; not calculated for <11 cases.  
 Sources: California Department of Health Care Access and Information (HCAI), 2020 Patient Discharge Database.  
 Population estimates, San Diego Association of Governments (SANDAG), 2020 (v09/2022) were derived using the 2010 Census and should be considered preliminary.

Maps & Analysis by County of San Diego, Health and Human Services Agency, Public Health Services, Community Health Statistics Unit.  
 Contact 619.692.6672. [https://www.sandiegocounty.gov/hhsa/programs/phs/community\\_health\\_statistics/](https://www.sandiegocounty.gov/hhsa/programs/phs/community_health_statistics/).  
 March, 2023.  
 LiveWellSD.org.



### Hospitalization Rates Among Hispanic Residents\* San Diego County, by Subregional Area, 2020

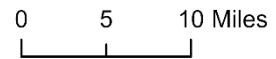


**Mood Disorders**

- 16.9 - 26.8
- 26.9 - 36.6
- Data not shown

\*Hospitalization refers to treatment at a general acute care facility in San Diego County. Rates per 100,000 residents; not calculated for <11 cases.  
Sources: California Department of Health Care Access and Information (HCAI), 2020 Patient Discharge Database.  
Population estimates, San Diego Association of Governments (SANDAG), 2020 (v09/2022) were derived using the 2010 Census and should be considered preliminary.

Maps & Analysis by County of San Diego, Health and Human Services Agency, Public Health Services, Community Health Statistics Unit.  
Contact 619.692.6672. [https://www.sandiegocounty.gov/hhsa/programs/phs/community\\_health\\_statistics/](https://www.sandiegocounty.gov/hhsa/programs/phs/community_health_statistics/).  
March, 2023.  
LiveWellSD.org.



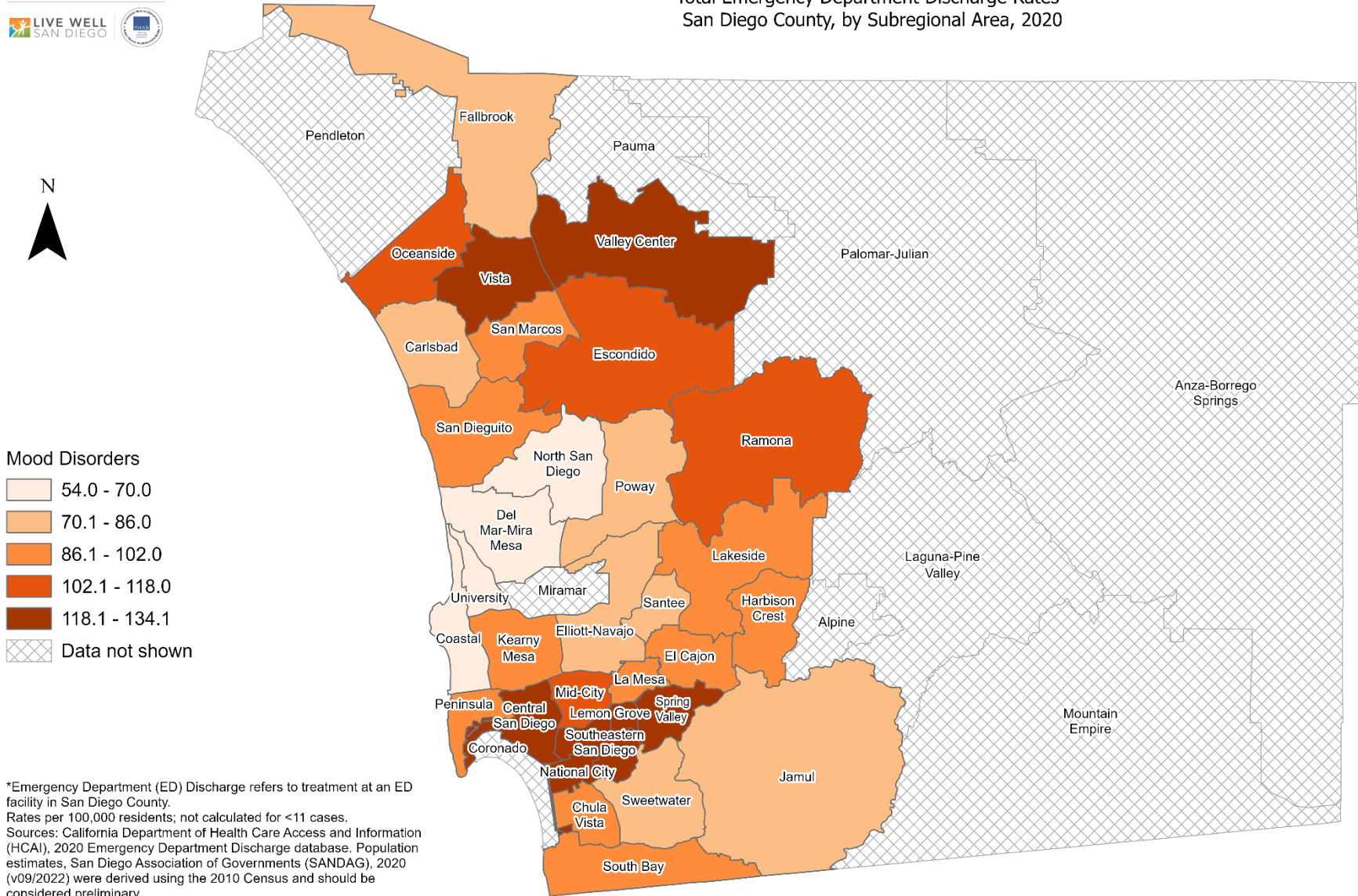


# SECTION 3

## **Emergency Department (ED) Discharge Rates Among San Diego County Residents by Demographics, 2020:**

- Total Rate
- Race/Ethnicity
  - Asian/Pacific Islander (API)
  - Black
  - Hispanic
  - White
- Age Group
  - 0-9 Years
  - 10-19 Years
  - 20-29 Years
  - 30-39 Years
  - 40-49 Years
  - 50-59 Years
  - 60-69 Years
  - 70-79 Years
  - 80+ Years

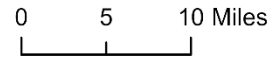
### Total Emergency Department Discharge Rates\* San Diego County, by Subregional Area, 2020



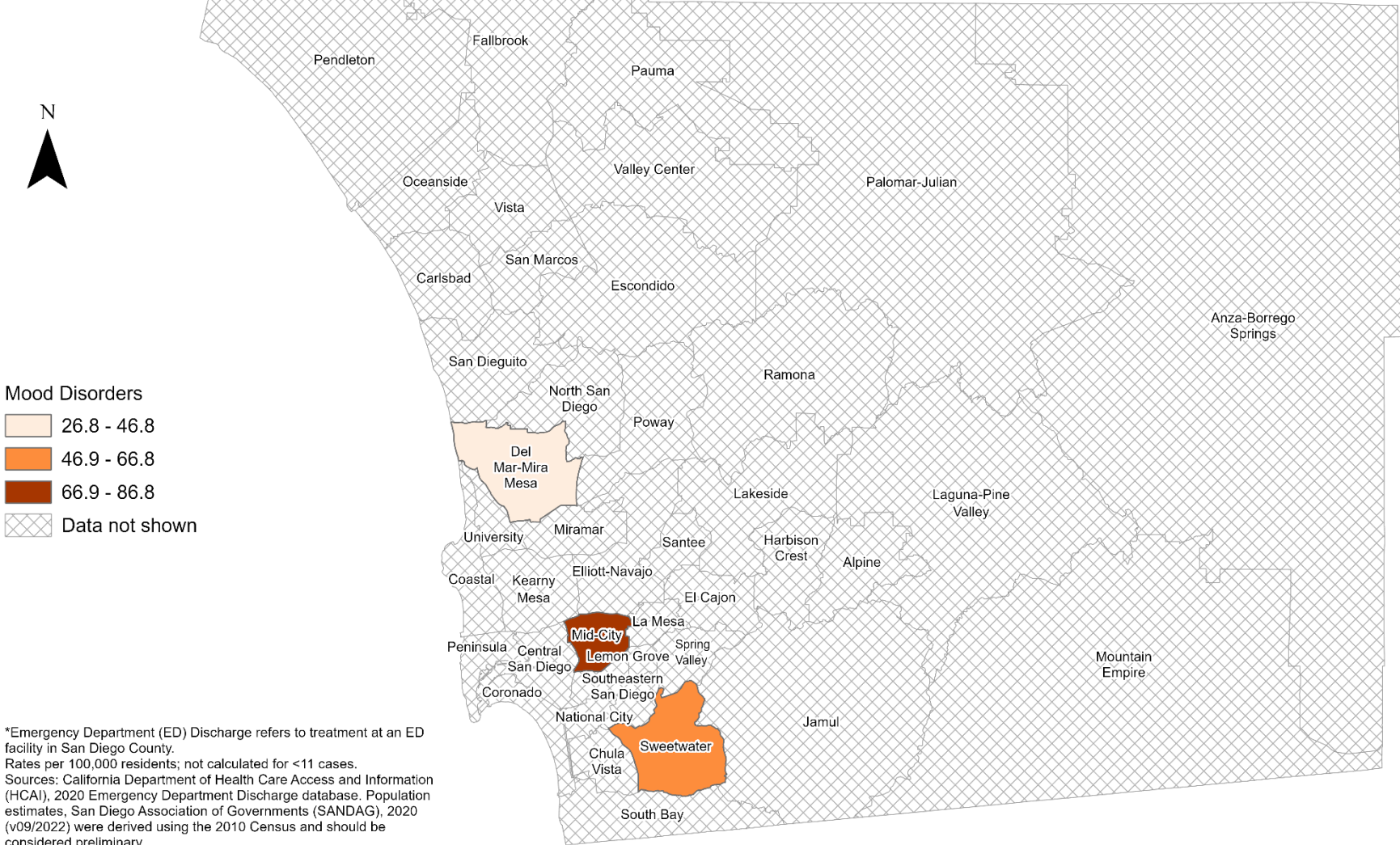
**Mood Disorders**

- 54.0 - 70.0
- 70.1 - 86.0
- 86.1 - 102.0
- 102.1 - 118.0
- 118.1 - 134.1
- Data not shown

\*Emergency Department (ED) Discharge refers to treatment at an ED facility in San Diego County. Rates per 100,000 residents; not calculated for <11 cases. Sources: California Department of Health Care Access and Information (HCAI), 2020 Emergency Department Discharge database. Population estimates, San Diego Association of Governments (SANDAG), 2020 (v09/2022) were derived using the 2010 Census and should be considered preliminary.



### Emergency Department Discharge Rates Among Asian/Pacific Islander Residents\* San Diego County, by Subregional Area, 2020

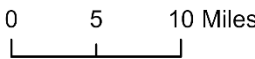


**Mood Disorders**

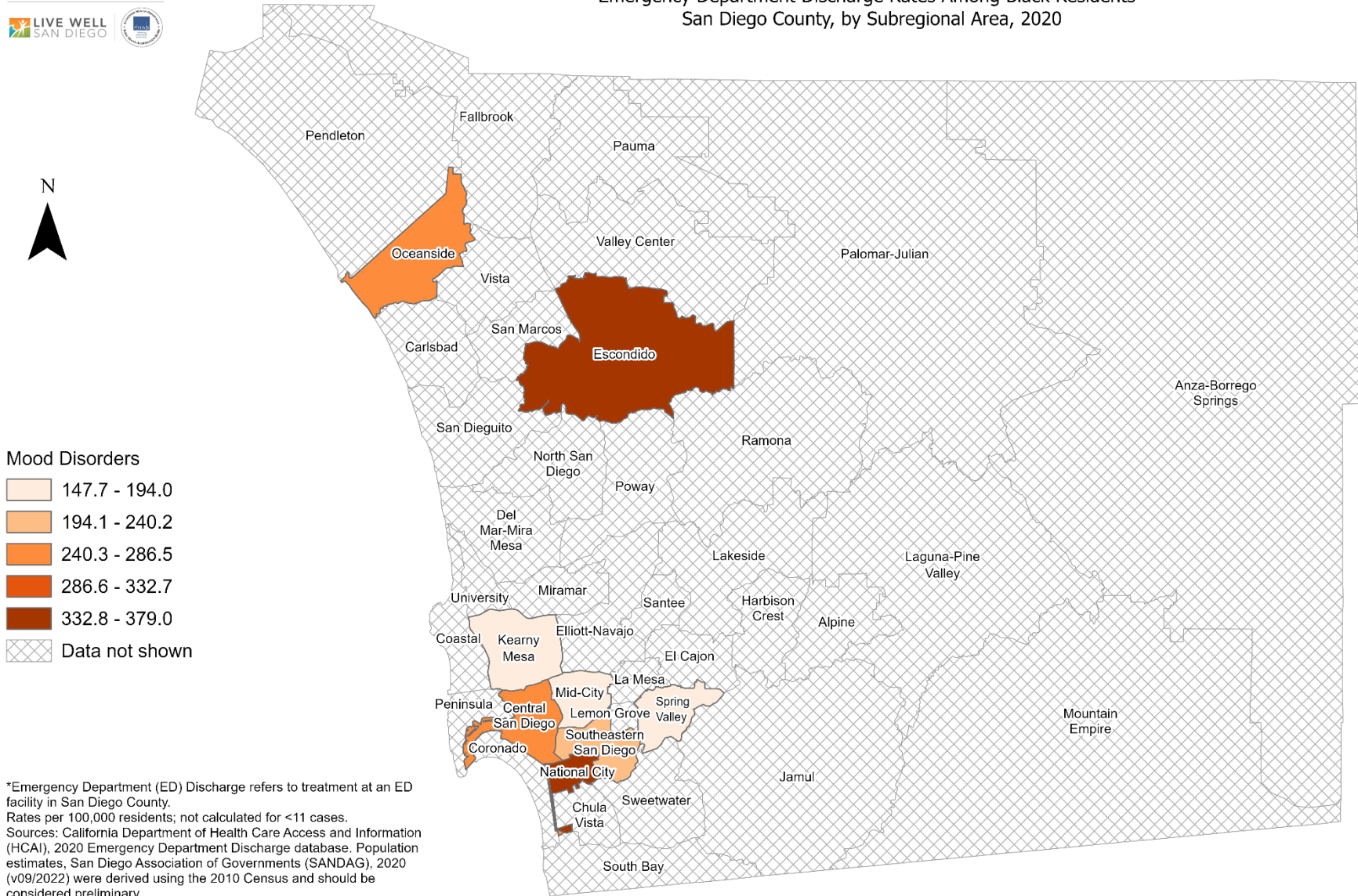
- 26.8 - 46.8
- 46.9 - 66.8
- 66.9 - 86.8
- Data not shown

\*Emergency Department (ED) Discharge refers to treatment at an ED facility in San Diego County. Rates per 100,000 residents; not calculated for <11 cases. Sources: California Department of Health Care Access and Information (HCAI), 2020 Emergency Department Discharge database. Population estimates, San Diego Association of Governments (SANDAG), 2020 (v09/2022) were derived using the 2010 Census and should be considered preliminary.

Maps & Analysis by County of San Diego, Health and Human Services Agency, Public Health Services, Community Health Statistics Unit. Contact 619.692.6672. [https://www.sandiegocounty.gov/hhsa/programs/phs/community\\_health\\_statistics/](https://www.sandiegocounty.gov/hhsa/programs/phs/community_health_statistics/). March, 2023. LiveWellSD.org.

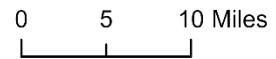


### Emergency Department Discharge Rates Among Black Residents\* San Diego County, by Subregional Area, 2020

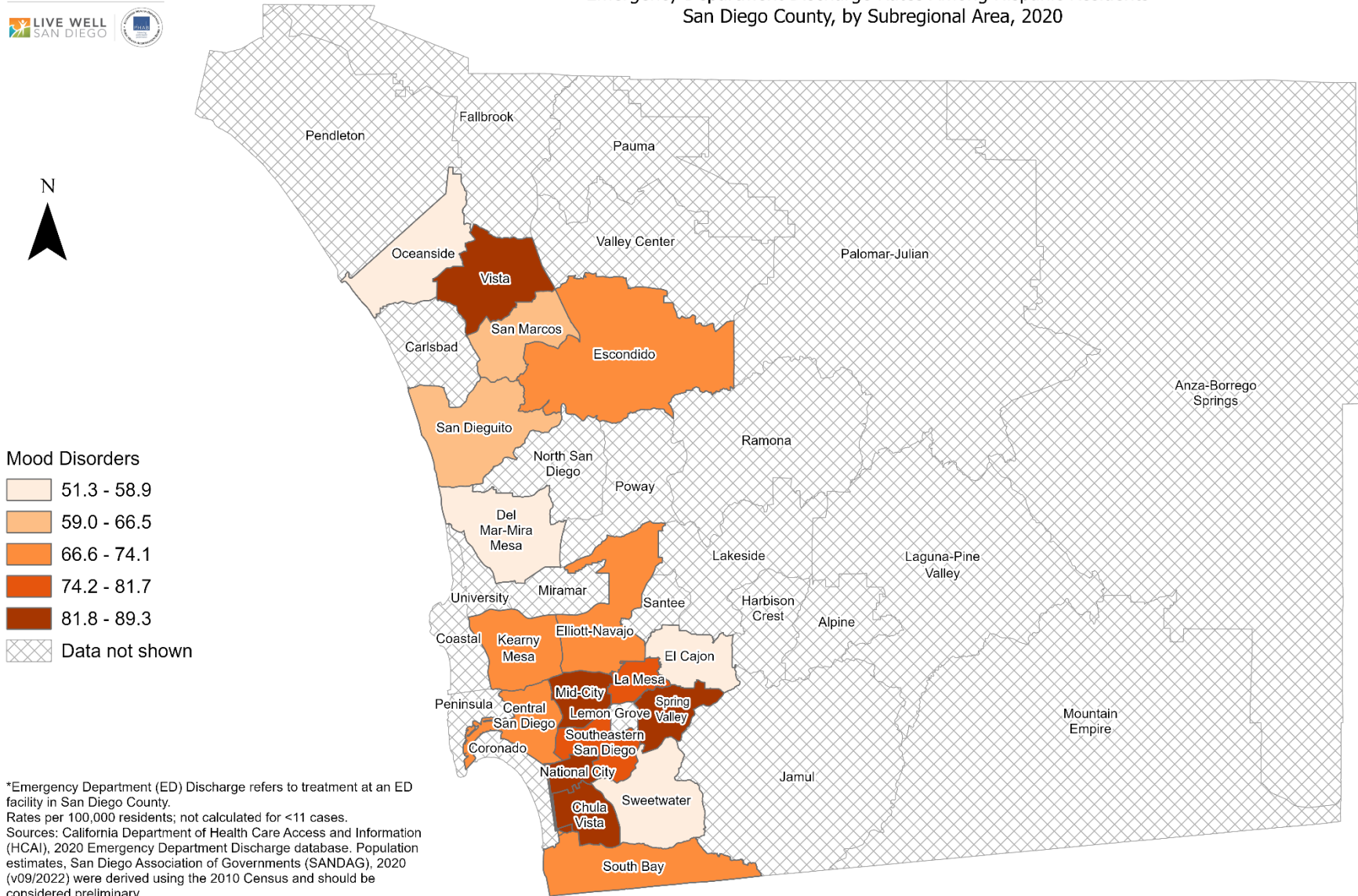


\*Emergency Department (ED) Discharge refers to treatment at an ED facility in San Diego County. Rates per 100,000 residents; not calculated for <11 cases. Sources: California Department of Health Care Access and Information (HCAI), 2020 Emergency Department Discharge database. Population estimates, San Diego Association of Governments (SANDAG), 2020 (v09/2022) were derived using the 2010 Census and should be considered preliminary.

Maps & Analysis by County of San Diego, Health and Human Services Agency, Public Health Services, Community Health Statistics Unit. Contact 619.692.6672. [https://www.sandiegocounty.gov/hhsa/programs/phs/community\\_health\\_statistics/](https://www.sandiegocounty.gov/hhsa/programs/phs/community_health_statistics/). March, 2023. LiveWellSD.org.



### Emergency Department Discharge Rates Among Hispanic Residents\* San Diego County, by Subregional Area, 2020



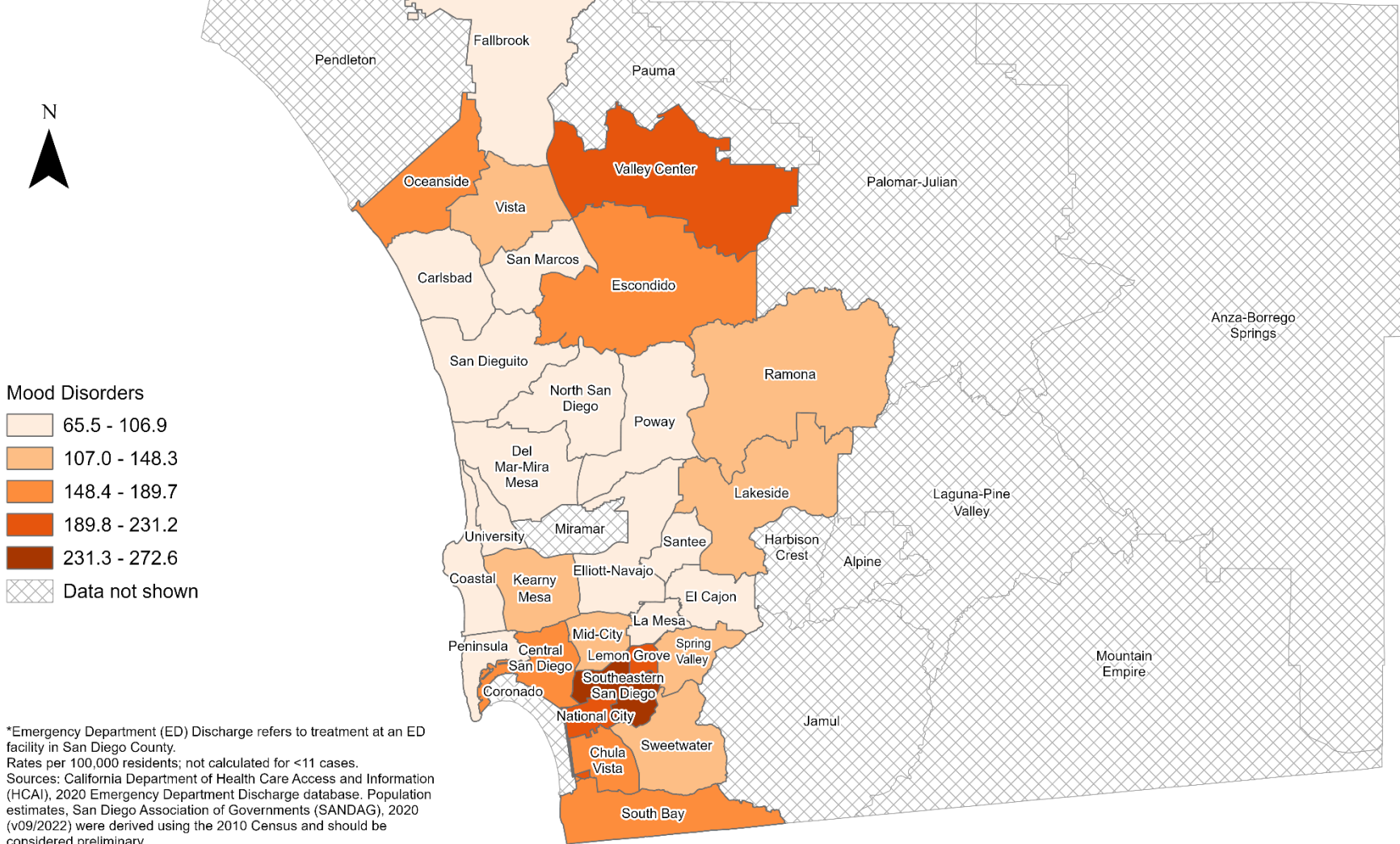
\*Emergency Department (ED) Discharge refers to treatment at an ED facility in San Diego County. Rates per 100,000 residents; not calculated for <11 cases. Sources: California Department of Health Care Access and Information (HCAI), 2020 Emergency Department Discharge database. Population estimates, San Diego Association of Governments (SANDAG), 2020 (v09/2022) were derived using the 2010 Census and should be considered preliminary.

Maps & Analysis by County of San Diego, Health and Human Services Agency, Public Health Services, Community Health Statistics Unit. Contact 619.692.6672. [https://www.sandiegocounty.gov/hhsa/programs/phs/community\\_health\\_statistics/](https://www.sandiegocounty.gov/hhsa/programs/phs/community_health_statistics/). March, 2023. LiveWellSD.org.

0 5 10 Miles



### Emergency Department Discharge Rates Among White Residents\* San Diego County, by Subregional Area, 2020

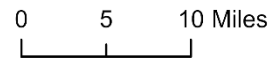


**Mood Disorders**

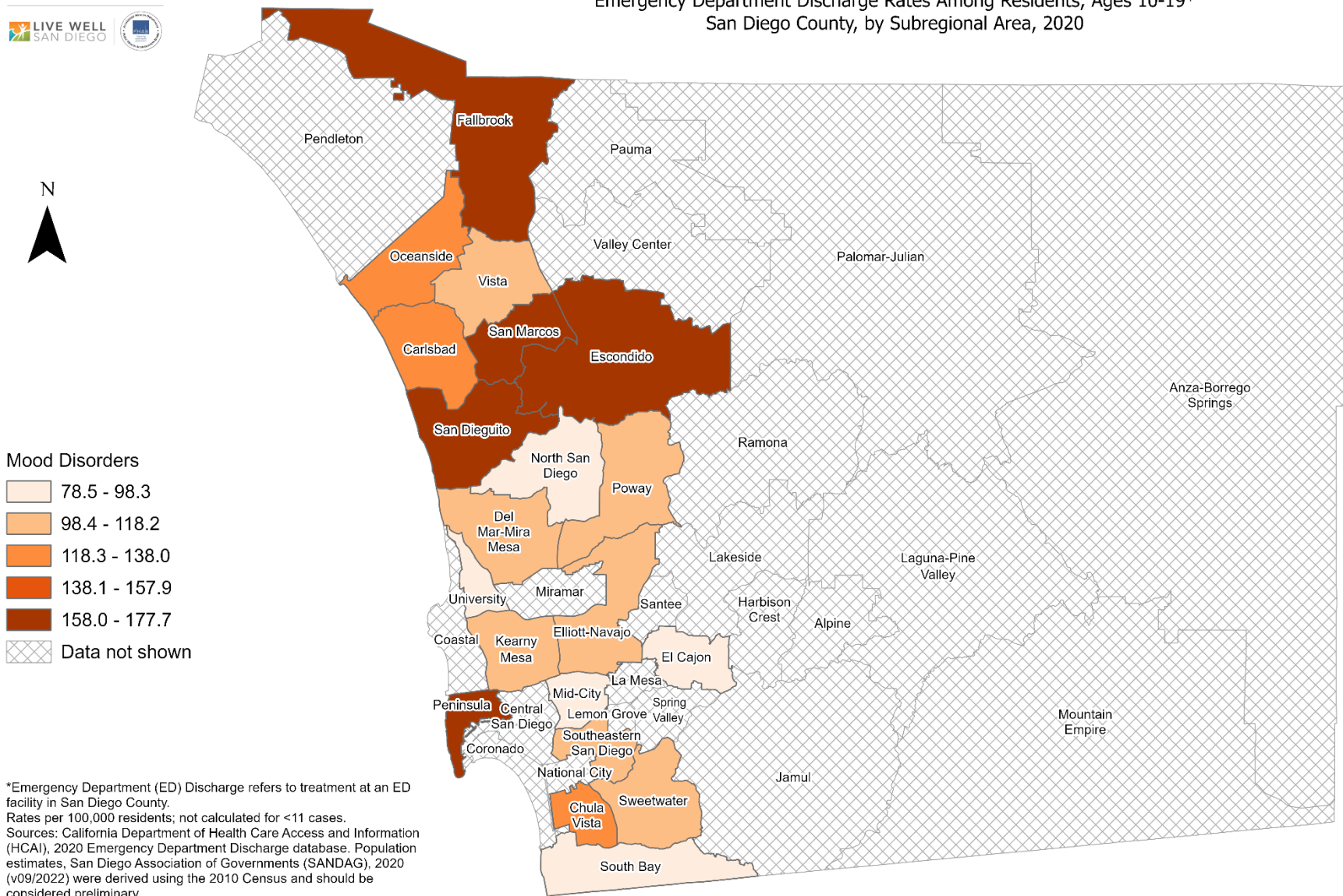
- 65.5 - 106.9
- 107.0 - 148.3
- 148.4 - 189.7
- 189.8 - 231.2
- 231.3 - 272.6
- Data not shown

\*Emergency Department (ED) Discharge refers to treatment at an ED facility in San Diego County. Rates per 100,000 residents; not calculated for <11 cases. Sources: California Department of Health Care Access and Information (HCAI), 2020 Emergency Department Discharge database. Population estimates, San Diego Association of Governments (SANDAG), 2020 (v09/2022) were derived using the 2010 Census and should be considered preliminary.

Maps & Analysis by County of San Diego, Health and Human Services Agency, Public Health Services, Community Health Statistics Unit. Contact 619.692.6672. [https://www.sandiegocounty.gov/hhsa/programs/phs/community\\_health\\_statistics/](https://www.sandiegocounty.gov/hhsa/programs/phs/community_health_statistics/). March, 2023. LiveWellSD.org.



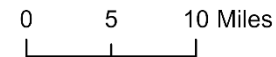
### Emergency Department Discharge Rates Among Residents, Ages 10-19\* San Diego County, by Subregional Area, 2020



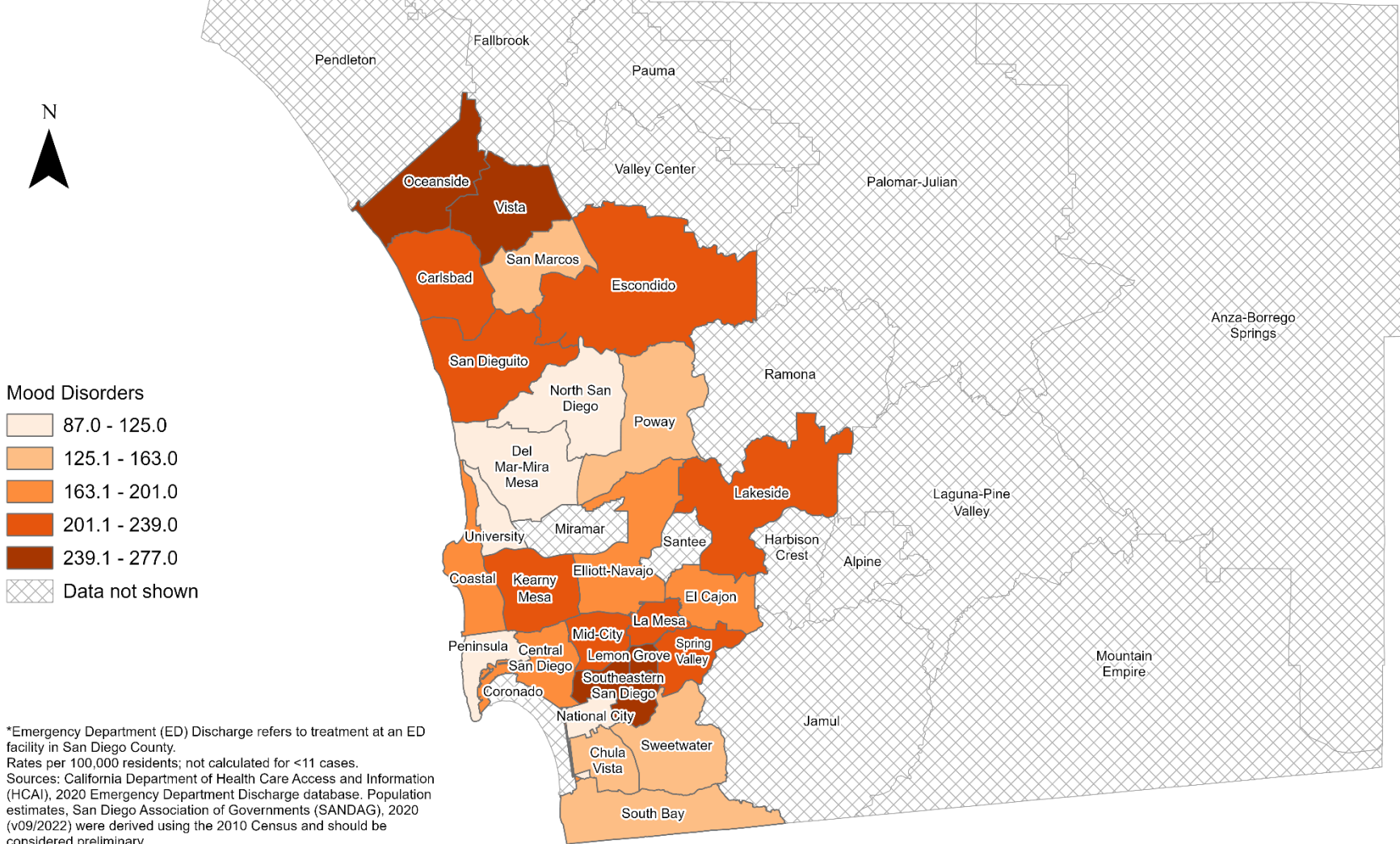
**Mood Disorders**

- 78.5 - 98.3
- 98.4 - 118.2
- 118.3 - 138.0
- 138.1 - 157.9
- 158.0 - 177.7
- Data not shown

\*Emergency Department (ED) Discharge refers to treatment at an ED facility in San Diego County. Rates per 100,000 residents; not calculated for <11 cases. Sources: California Department of Health Care Access and Information (HCAI), 2020 Emergency Department Discharge database. Population estimates, San Diego Association of Governments (SANDAG), 2020 (v09/2022) were derived using the 2010 Census and should be considered preliminary.



### Emergency Department Discharge Rates Among Residents, Ages 20-29\* San Diego County, by Subregional Area, 2020

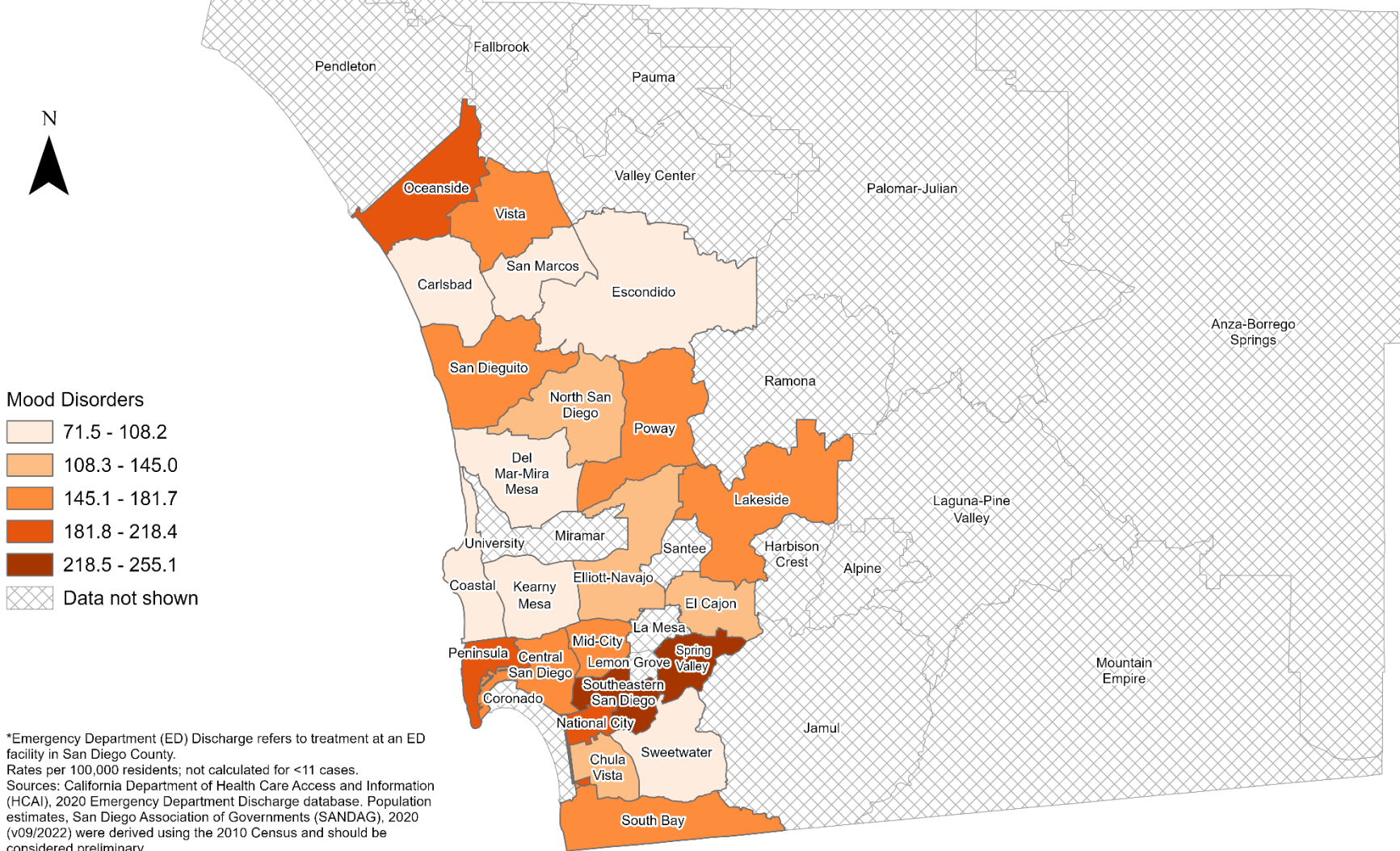


\*Emergency Department (ED) Discharge refers to treatment at an ED facility in San Diego County. Rates per 100,000 residents; not calculated for <11 cases. Sources: California Department of Health Care Access and Information (HCAI), 2020 Emergency Department Discharge database. Population estimates, San Diego Association of Governments (SANDAG), 2020 (v09/2022) were derived using the 2010 Census and should be considered preliminary.





### Emergency Department Discharge Rates Among Residents, Ages 30-39\* San Diego County, by Subregional Area, 2020

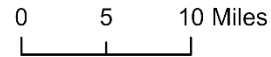


**Mood Disorders**

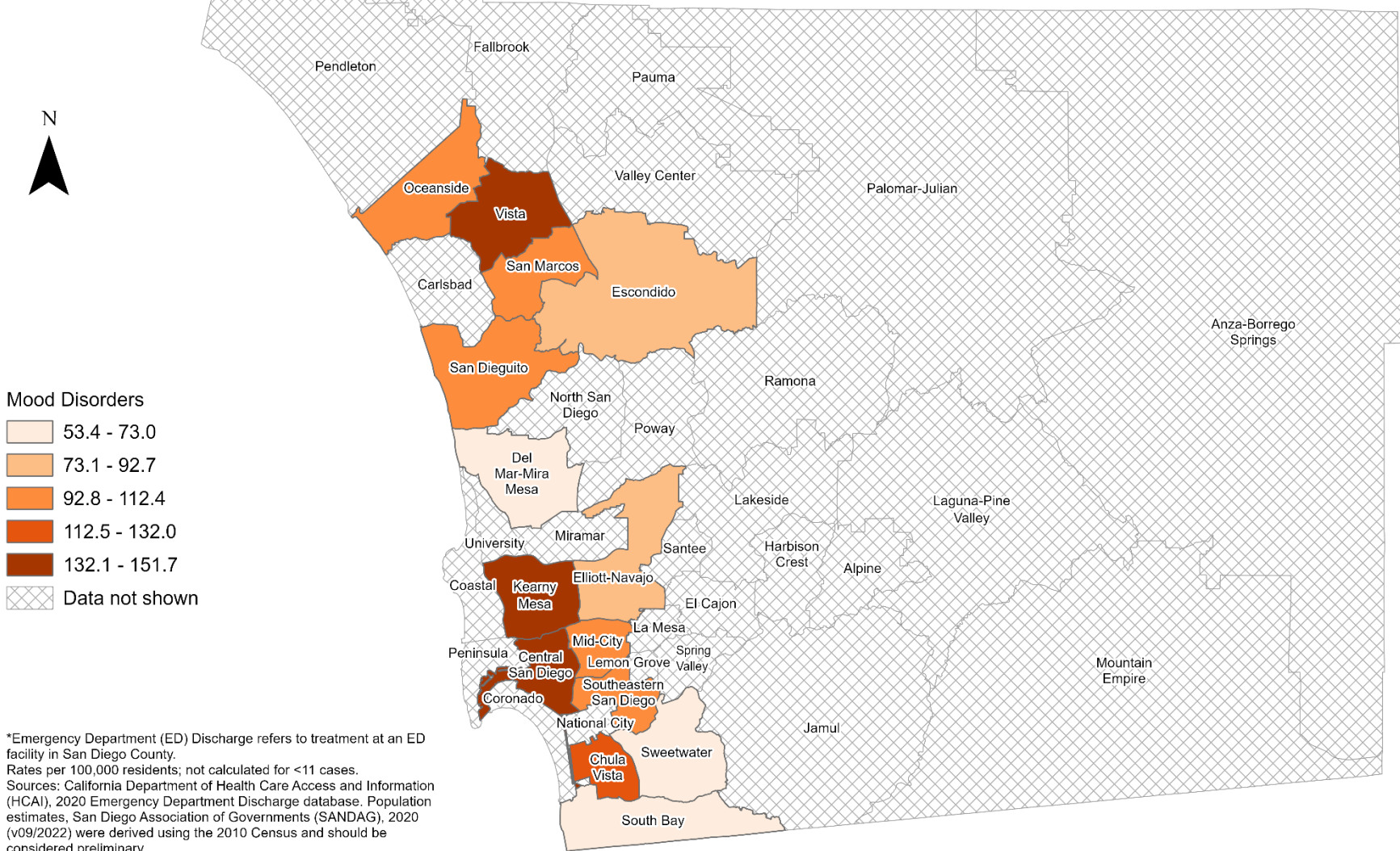
- 71.5 - 108.2
- 108.3 - 145.0
- 145.1 - 181.7
- 181.8 - 218.4
- 218.5 - 255.1
- Data not shown

\*Emergency Department (ED) Discharge refers to treatment at an ED facility in San Diego County. Rates per 100,000 residents; not calculated for <11 cases. Sources: California Department of Health Care Access and Information (HCAI), 2020 Emergency Department Discharge database. Population estimates, San Diego Association of Governments (SANDAG), 2020 (v09/2022) were derived using the 2010 Census and should be considered preliminary.

Maps & Analysis by County of San Diego, Health and Human Services Agency, Public Health Services, Community Health Statistics Unit. Contact 619.692.6672. [https://www.sandiegocounty.gov/hhsa/programs/phs/community\\_health\\_statistics/](https://www.sandiegocounty.gov/hhsa/programs/phs/community_health_statistics/). March, 2023. LiveWellSD.org.



### Emergency Department Discharge Rates Among Residents, Ages 40-49\* San Diego County, by Subregional Area, 2020

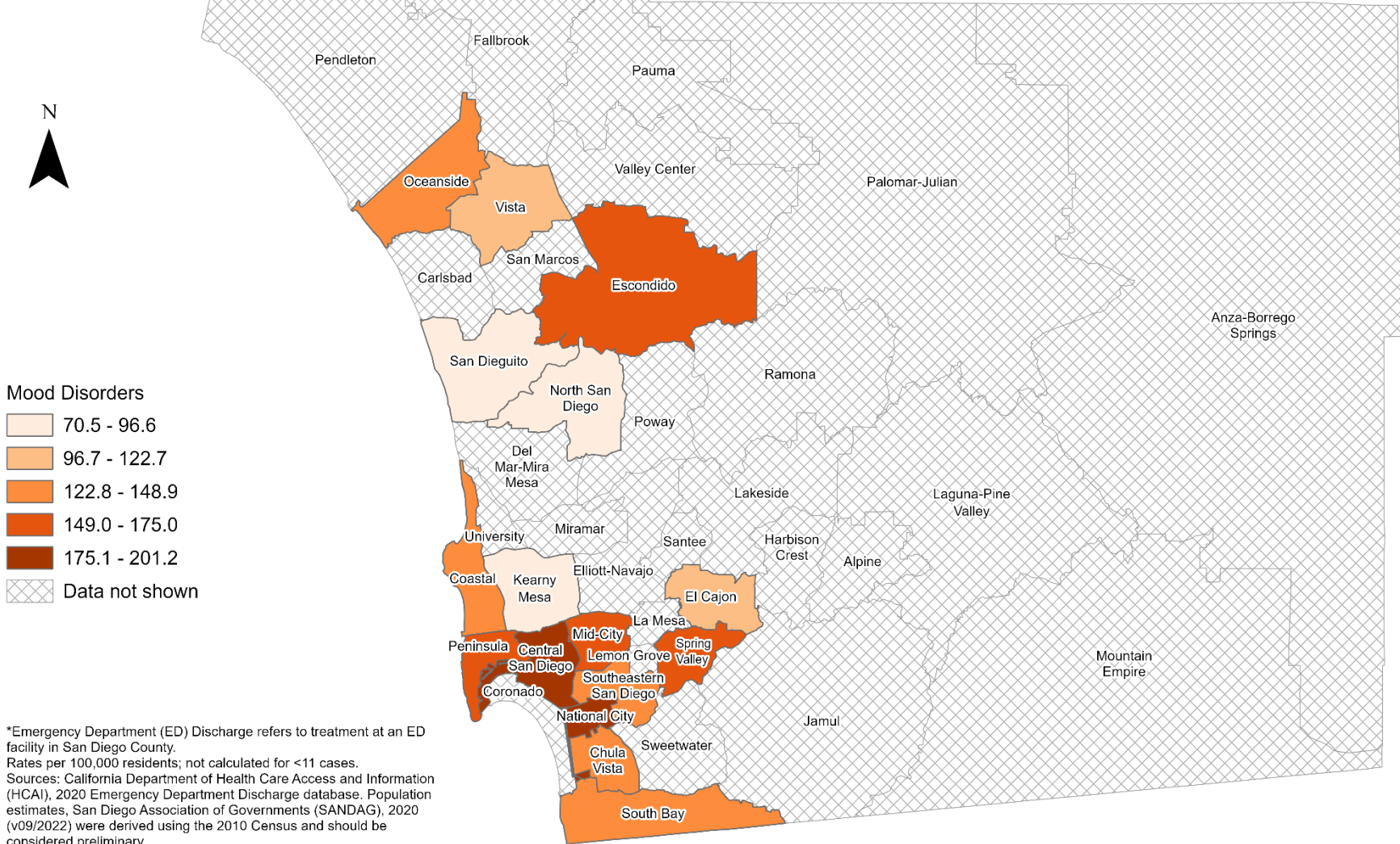


\*Emergency Department (ED) Discharge refers to treatment at an ED facility in San Diego County. Rates per 100,000 residents; not calculated for <11 cases. Sources: California Department of Health Care Access and Information (HCAI), 2020 Emergency Department Discharge database. Population estimates, San Diego Association of Governments (SANDAG), 2020 (v09/2022) were derived using the 2010 Census and should be considered preliminary.

Maps & Analysis by County of San Diego, Health and Human Services Agency, Public Health Services, Community Health Statistics Unit. Contact 619.692.6672. [https://www.sandiegocounty.gov/hhsa/programs/phs/community\\_health\\_statistics/](https://www.sandiegocounty.gov/hhsa/programs/phs/community_health_statistics/). March, 2023. LiveWellSD.org.



### Emergency Department Discharge Rates Among Residents, Ages 50-59\* San Diego County, by Subregional Area, 2020

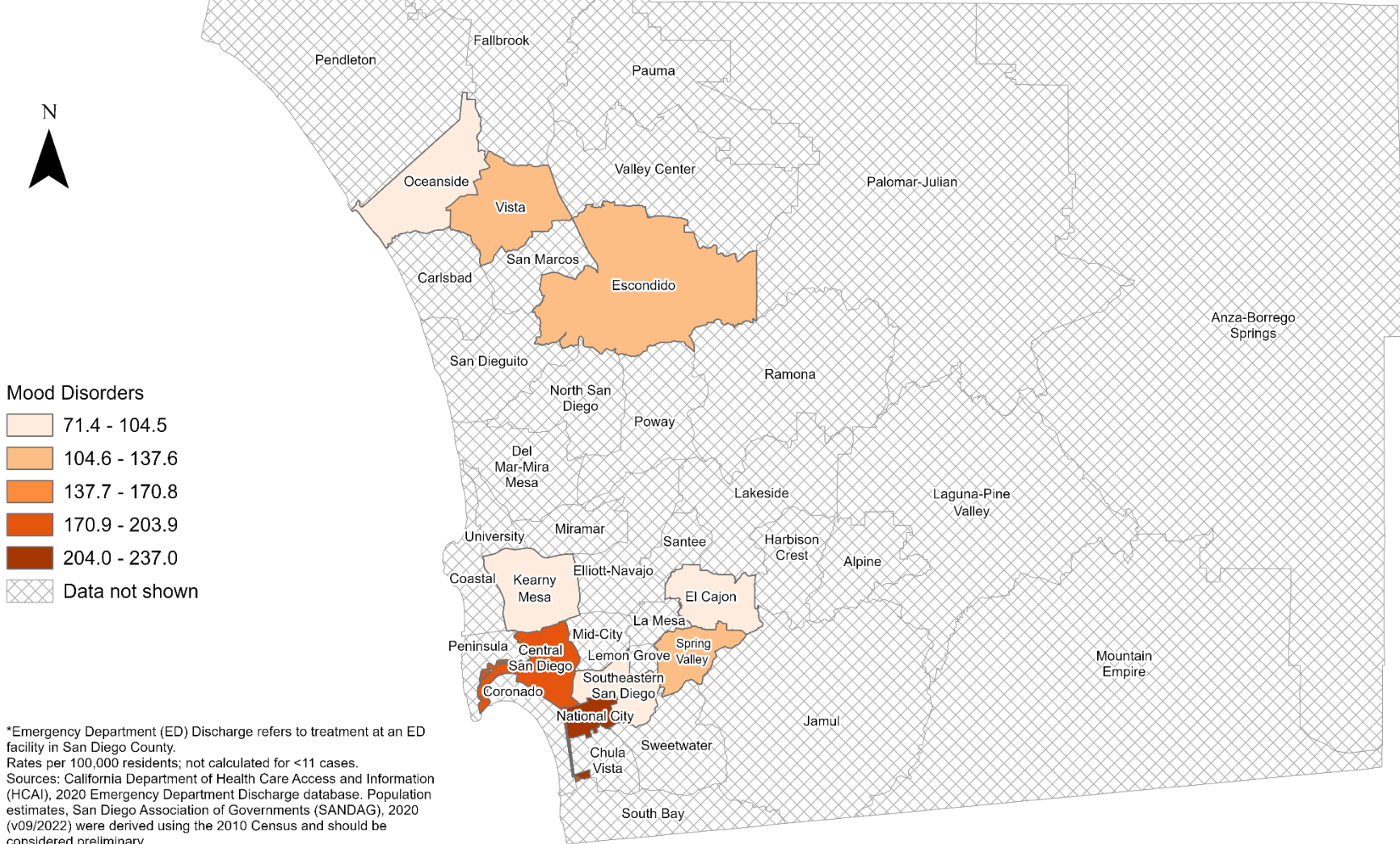


\*Emergency Department (ED) Discharge refers to treatment at an ED facility in San Diego County. Rates per 100,000 residents; not calculated for <11 cases. Sources: California Department of Health Care Access and Information (HCAI), 2020 Emergency Department Discharge database. Population estimates, San Diego Association of Governments (SANDAG), 2020 (v09/2022) were derived using the 2010 Census and should be considered preliminary.

Maps & Analysis by County of San Diego, Health and Human Services Agency, Public Health Services, Community Health Statistics Unit. Contact 619.692.6672. [https://www.sandiegocounty.gov/hhsa/programs/phs/community\\_health\\_statistics/](https://www.sandiegocounty.gov/hhsa/programs/phs/community_health_statistics/). March, 2023. LiveWellSD.org.

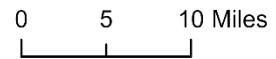


### Emergency Department Discharge Rates Among Residents, Ages 60-69\* San Diego County, by Subregional Area, 2020



\*Emergency Department (ED) Discharge refers to treatment at an ED facility in San Diego County. Rates per 100,000 residents; not calculated for <11 cases. Sources: California Department of Health Care Access and Information (HCAI), 2020 Emergency Department Discharge database. Population estimates, San Diego Association of Governments (SANDAG), 2020 (v09/2022) were derived using the 2010 Census and should be considered preliminary.

Maps & Analysis by County of San Diego, Health and Human Services Agency, Public Health Services, Community Health Statistics Unit. Contact 619.692.6672. [https://www.sandiegocounty.gov/hhsa/programs/phs/community\\_health\\_statistics/](https://www.sandiegocounty.gov/hhsa/programs/phs/community_health_statistics/). March, 2023. LiveWellSD.org.

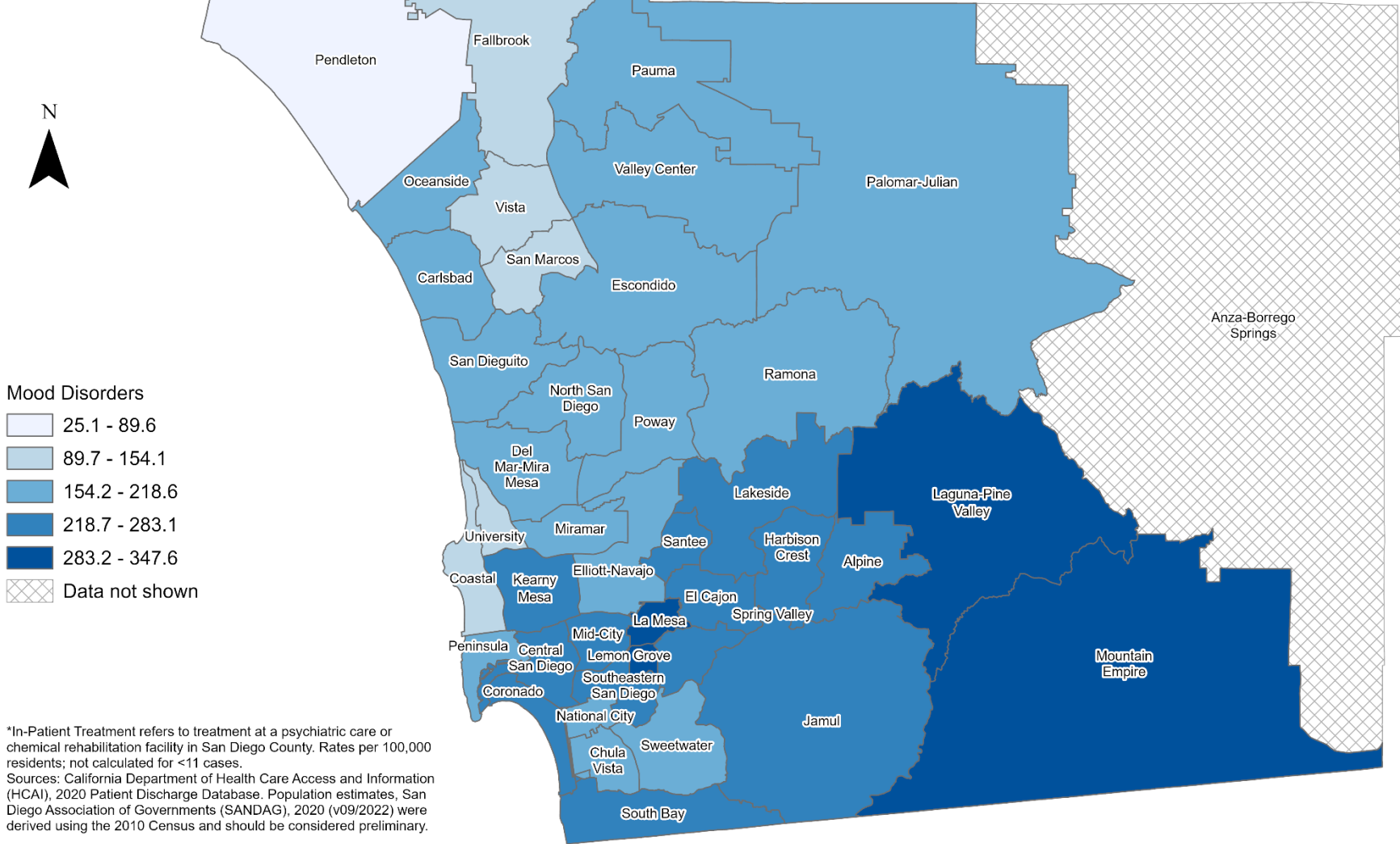


# SECTION 4

## **In-Patient Treatment (IPT) Rates Among San Diego County Residents by Demographics, 2020:**

- Total Rate
- Race/Ethnicity
  - Asian/Pacific Islander (API)
  - Black
  - Hispanic
  - White
- Age Group
  - 0-9 Years
  - 10-19 Years
  - 20-29 Years
  - 30-39 Years
  - 40-49 Years
  - 50-59 Years
  - 60-69 Years
  - 70-79 Years
  - 80+ Years

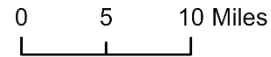
### Total In-Patient Treatment Rates\* San Diego County, by Subregional Area, 2020



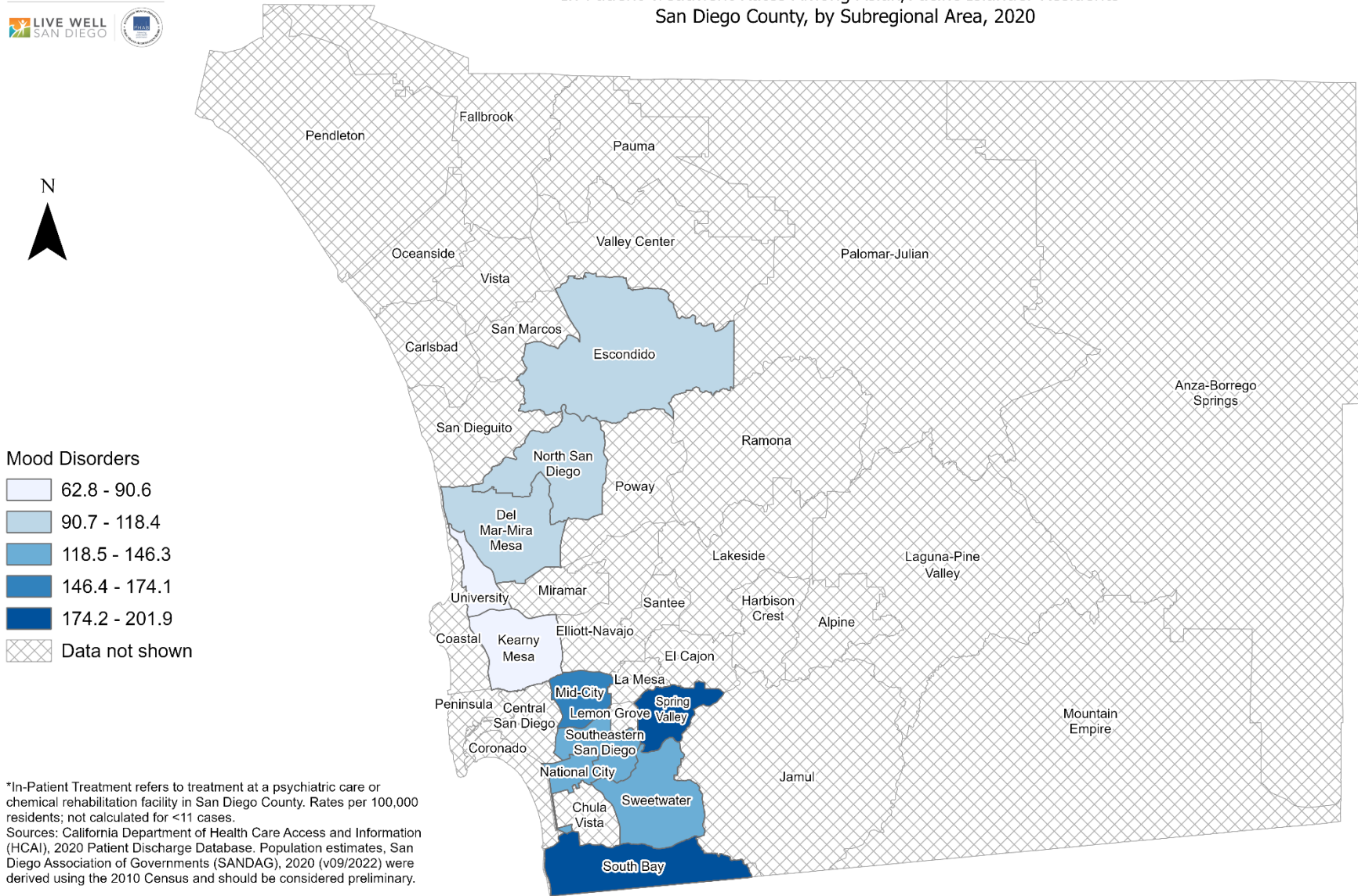
- Mood Disorders**
- 25.1 - 89.6
  - 89.7 - 154.1
  - 154.2 - 218.6
  - 218.7 - 283.1
  - 283.2 - 347.6
  - Data not shown

\*In-Patient Treatment refers to treatment at a psychiatric care or chemical rehabilitation facility in San Diego County. Rates per 100,000 residents; not calculated for <11 cases.  
Sources: California Department of Health Care Access and Information (HCAI), 2020 Patient Discharge Database. Population estimates, San Diego Association of Governments (SANDAG), 2020 (v09/2022) were derived using the 2010 Census and should be considered preliminary.

Maps & Analysis by County of San Diego, Health and Human Services Agency, Public Health Services, Community Health Statistics Unit.  
Contact 619.692.6672. [https://www.sandiegocounty.gov/hhsa/programs/phs/community\\_health\\_statistics/](https://www.sandiegocounty.gov/hhsa/programs/phs/community_health_statistics/).  
March, 2023.  
LiveWellSD.org.



### In-Patient Treatment Rates Among Asian/Pacific Islander Residents\* San Diego County, by Subregional Area, 2020



**Mood Disorders**

- 62.8 - 90.6
- 90.7 - 118.4
- 118.5 - 146.3
- 146.4 - 174.1
- 174.2 - 201.9
- Data not shown

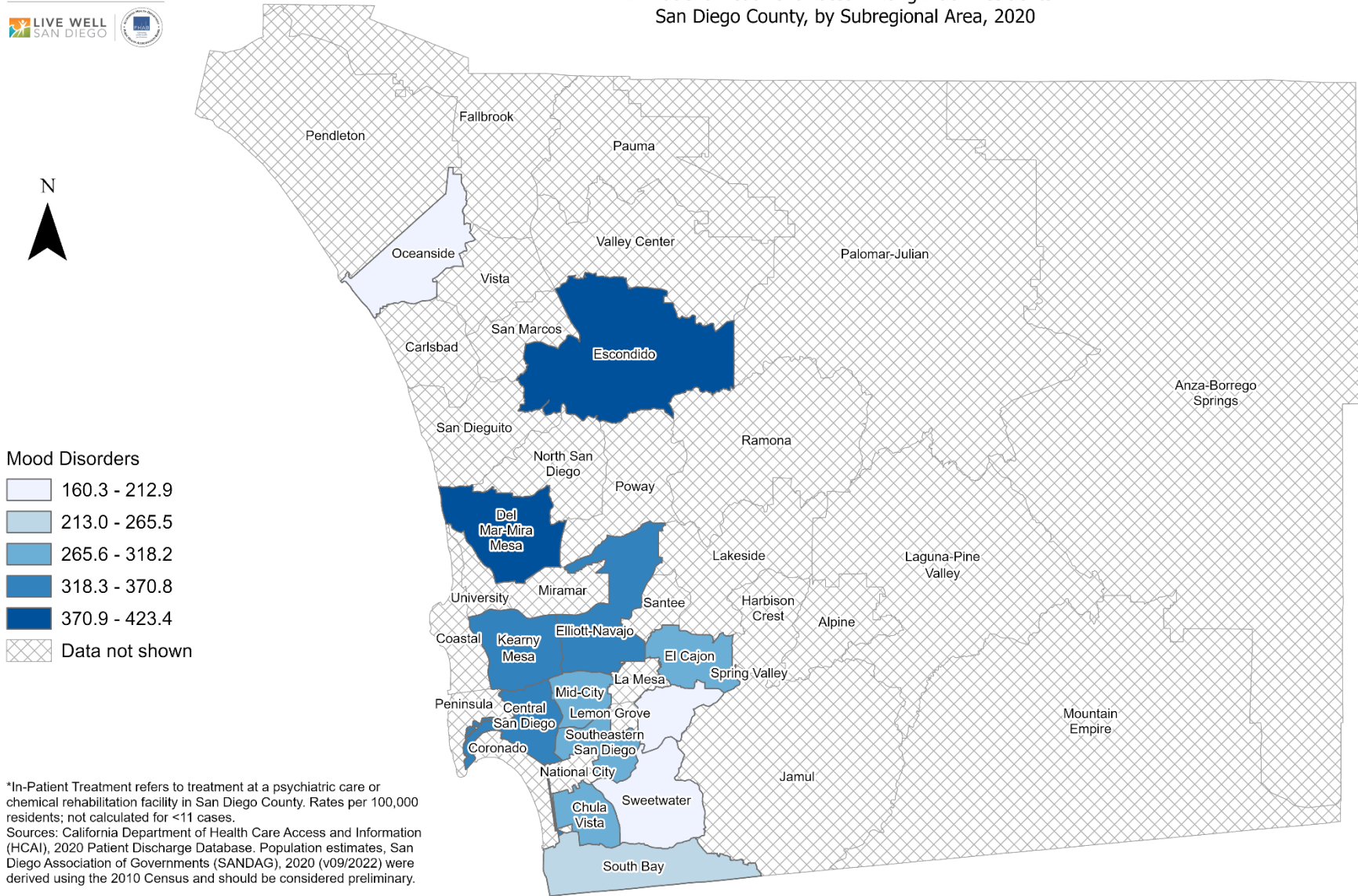
\*In-Patient Treatment refers to treatment at a psychiatric care or chemical rehabilitation facility in San Diego County. Rates per 100,000 residents; not calculated for <11 cases.  
Sources: California Department of Health Care Access and Information (HCAI), 2020 Patient Discharge Database. Population estimates, San Diego Association of Governments (SANDAG), 2020 (v09/2022) were derived using the 2010 Census and should be considered preliminary.

Maps & Analysis by County of San Diego, Health and Human Services Agency, Public Health Services, Community Health Statistics Unit.  
Contact 619.692.6672. [https://www.sandiegocounty.gov/hhsa/programs/phs/community\\_health\\_statistics/](https://www.sandiegocounty.gov/hhsa/programs/phs/community_health_statistics/)  
March, 2023.  
[LiveWellSD.org](http://LiveWellSD.org).

0 5 10 Miles



### In-Patient Treatment Rates Among Black Residents\* San Diego County, by Subregional Area, 2020

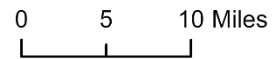


**Mood Disorders**

- 160.3 - 212.9
- 213.0 - 265.5
- 265.6 - 318.2
- 318.3 - 370.8
- 370.9 - 423.4
- Data not shown

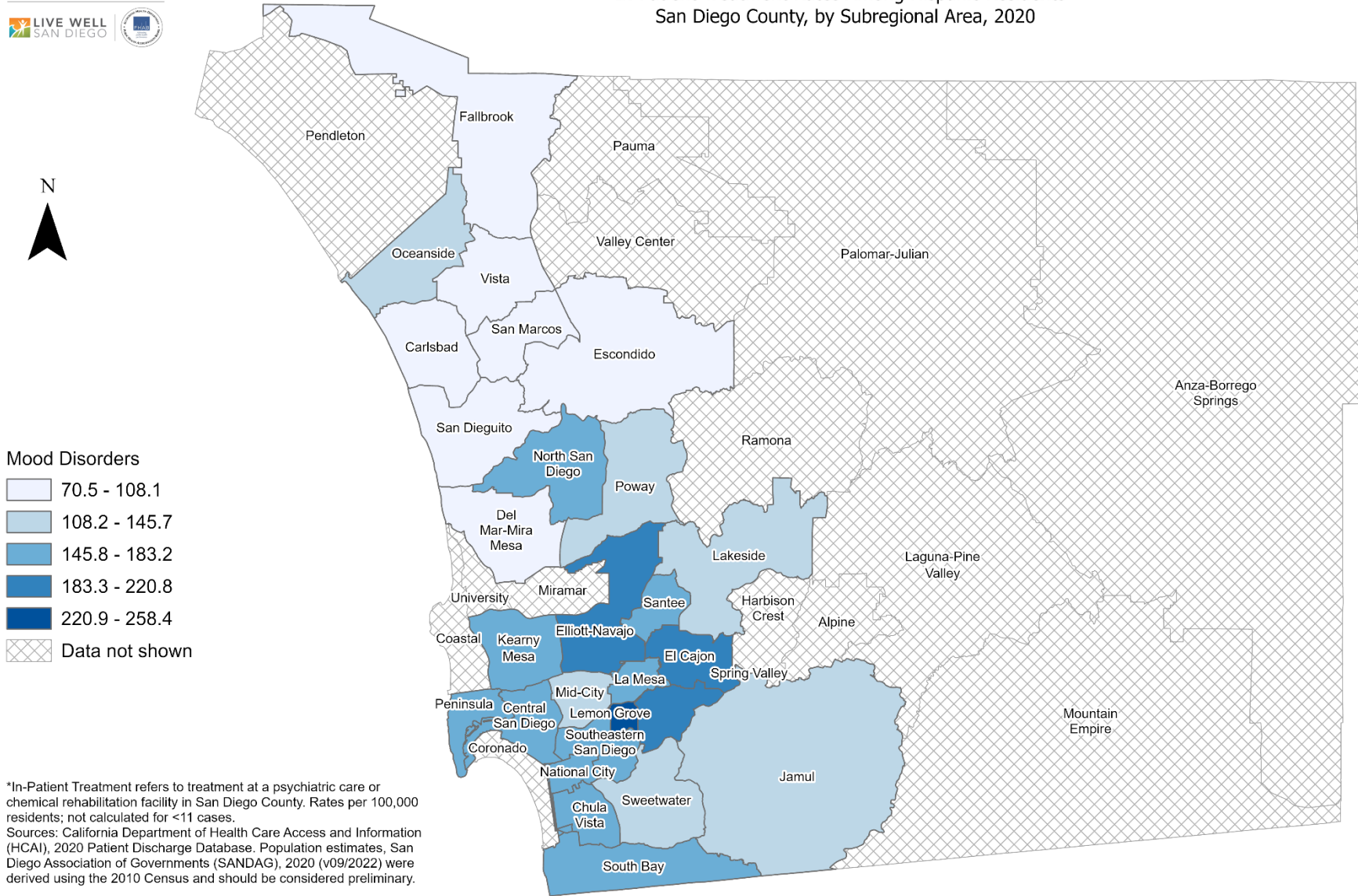
\*In-Patient Treatment refers to treatment at a psychiatric care or chemical rehabilitation facility in San Diego County. Rates per 100,000 residents; not calculated for <11 cases.  
Sources: California Department of Health Care Access and Information (HCAI), 2020 Patient Discharge Database. Population estimates, San Diego Association of Governments (SANDAG), 2020 (v09/2022) were derived using the 2010 Census and should be considered preliminary.

Maps & Analysis by County of San Diego, Health and Human Services Agency, Public Health Services, Community Health Statistics Unit.  
Contact 619.692.6672. [https://www.sandiegocounty.gov/hhsa/programs/phs/community\\_health\\_statistics/](https://www.sandiegocounty.gov/hhsa/programs/phs/community_health_statistics/).  
March, 2023.  
[LiveWellSD.org](http://LiveWellSD.org).





### In-Patient Treatment Rates Among Hispanic Residents\* San Diego County, by Subregional Area, 2020



**Mood Disorders**

- 70.5 - 108.1
- 108.2 - 145.7
- 145.8 - 183.2
- 183.3 - 220.8
- 220.9 - 258.4
- Data not shown

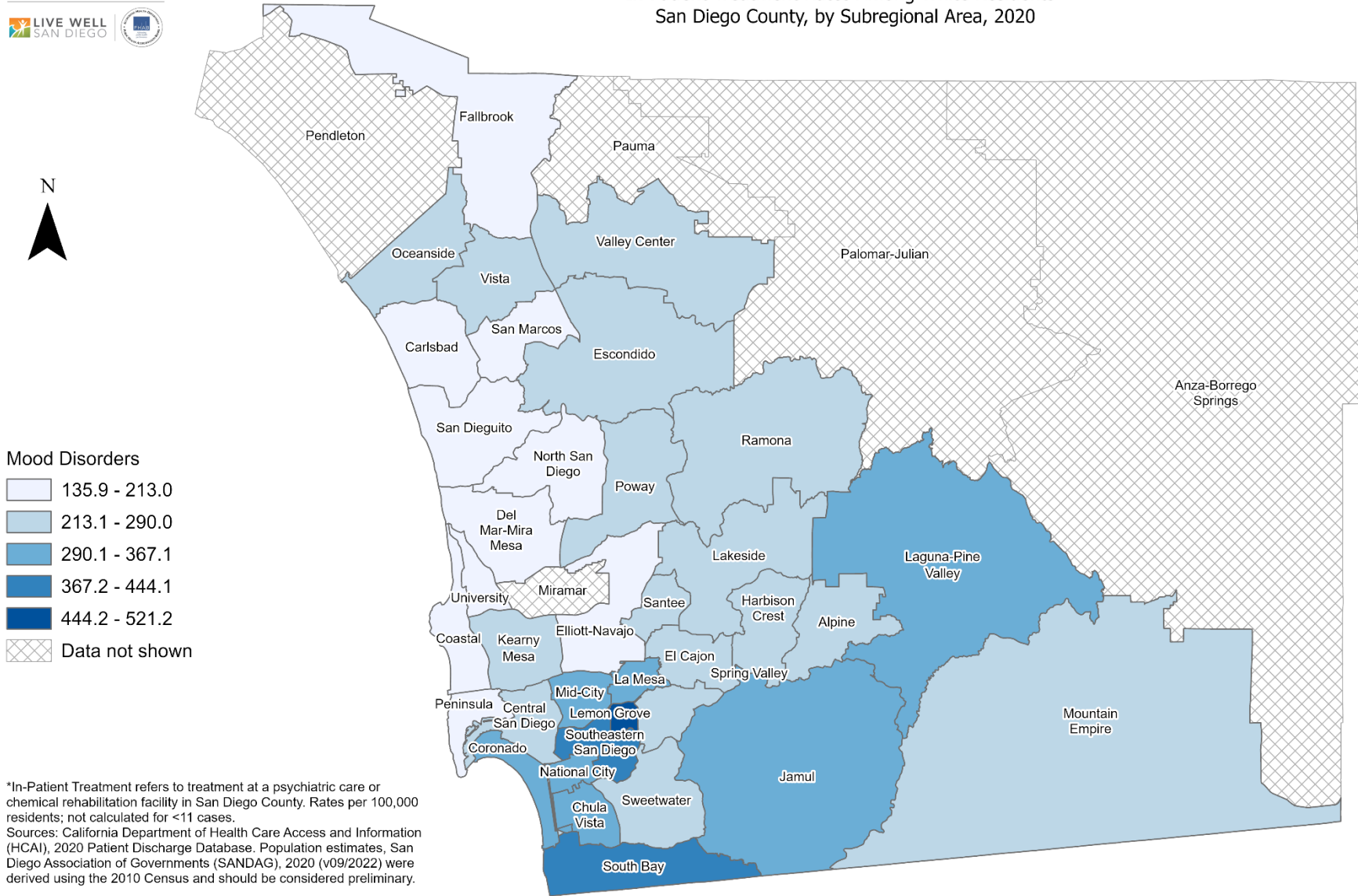
\*In-Patient Treatment refers to treatment at a psychiatric care or chemical rehabilitation facility in San Diego County. Rates per 100,000 residents; not calculated for <11 cases.  
Sources: California Department of Health Care Access and Information (HCAI), 2020 Patient Discharge Database. Population estimates, San Diego Association of Governments (SANDAG), 2020 (v09/2022) were derived using the 2010 Census and should be considered preliminary.

Maps & Analysis by County of San Diego, Health and Human Services Agency, Public Health Services, Community Health Statistics Unit.  
Contact 619.692.6672. [https://www.sandiegocounty.gov/hhsa/programs/phs/community\\_health\\_statistics/](https://www.sandiegocounty.gov/hhsa/programs/phs/community_health_statistics/)  
March, 2023.  
LiveWellSD.org.

0 5 10 Miles



### In-Patient Treatment Rates Among White Residents\* San Diego County, by Subregional Area, 2020

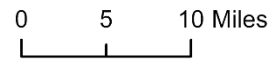


**Mood Disorders**

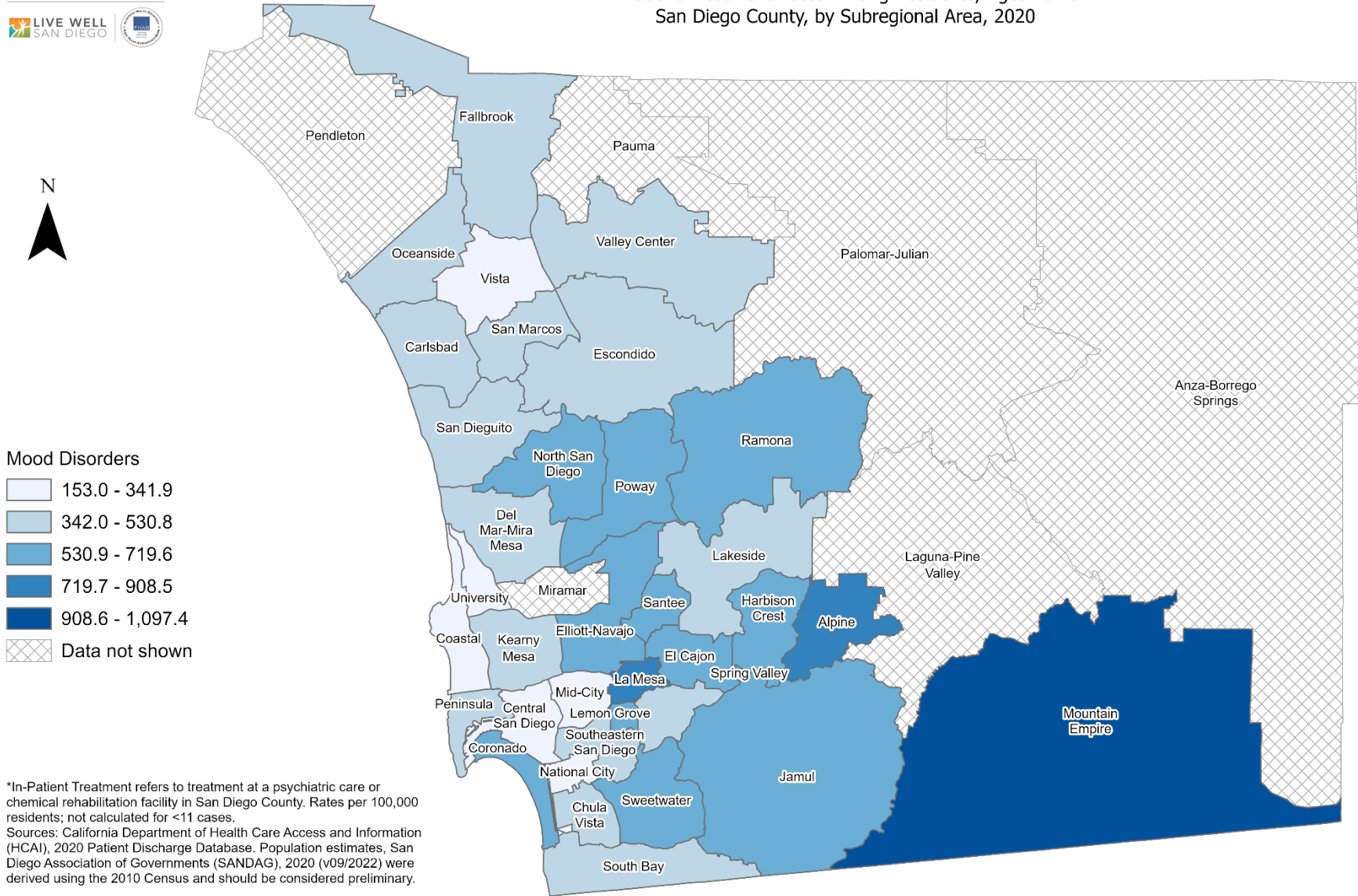
- 135.9 - 213.0
- 213.1 - 290.0
- 290.1 - 367.1
- 367.2 - 444.1
- 444.2 - 521.2
- Data not shown

\*In-Patient Treatment refers to treatment at a psychiatric care or chemical rehabilitation facility in San Diego County. Rates per 100,000 residents; not calculated for <11 cases.  
Sources: California Department of Health Care Access and Information (HCAI), 2020 Patient Discharge Database. Population estimates, San Diego Association of Governments (SANDAG), 2020 (v09/2022) were derived using the 2010 Census and should be considered preliminary.

Maps & Analysis by County of San Diego, Health and Human Services Agency, Public Health Services, Community Health Statistics Unit.  
Contact 619.692.6672. [https://www.sandiegocounty.gov/hhsa/programs/phs/community\\_health\\_statistics/](https://www.sandiegocounty.gov/hhsa/programs/phs/community_health_statistics/)  
March, 2023.  
LiveWellSD.org.

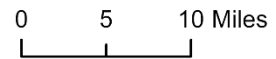


### In-Patient Treatment Rates Among Residents, Ages 10-19\* San Diego County, by Subregional Area, 2020

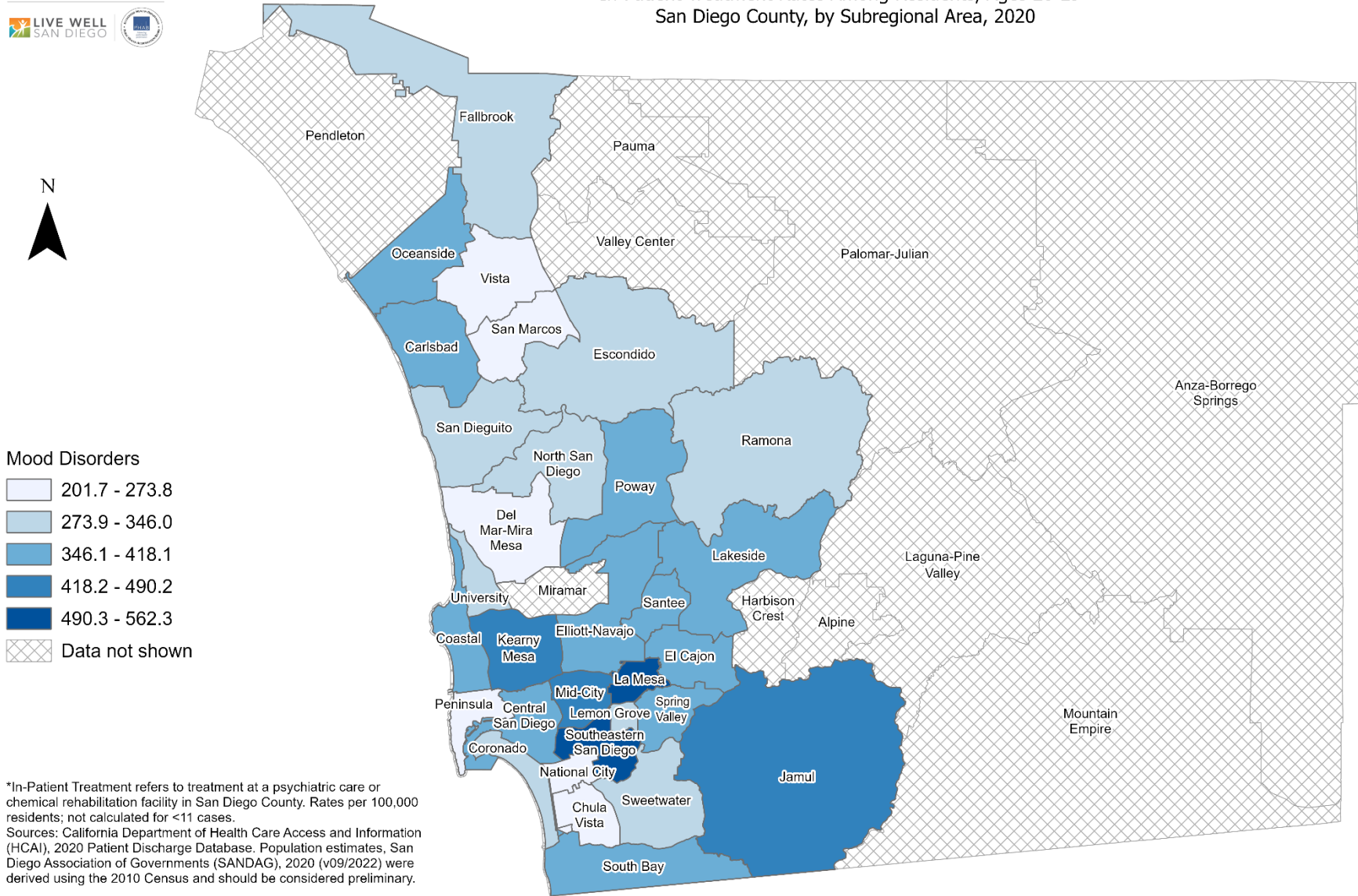


\*In-Patient Treatment refers to treatment at a psychiatric care or chemical rehabilitation facility in San Diego County. Rates per 100,000 residents; not calculated for <11 cases.  
Sources: California Department of Health Care Access and Information (HCAI), 2020 Patient Discharge Database. Population estimates, San Diego Association of Governments (SANDAG), 2020 (v09/2022) were derived using the 2010 Census and should be considered preliminary.

Maps & Analysis by County of San Diego, Health and Human Services Agency, Public Health Services, Community Health Statistics Unit.  
Contact 619.692.6672. [https://www.sandiegocounty.gov/hhsa/programs/phs/community\\_health\\_statistics/](https://www.sandiegocounty.gov/hhsa/programs/phs/community_health_statistics/)  
March, 2023.  
LiveWellSD.org.



### In-Patient Treatment Rates Among Residents, Ages 20-29\* San Diego County, by Subregional Area, 2020

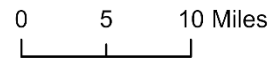


**Mood Disorders**

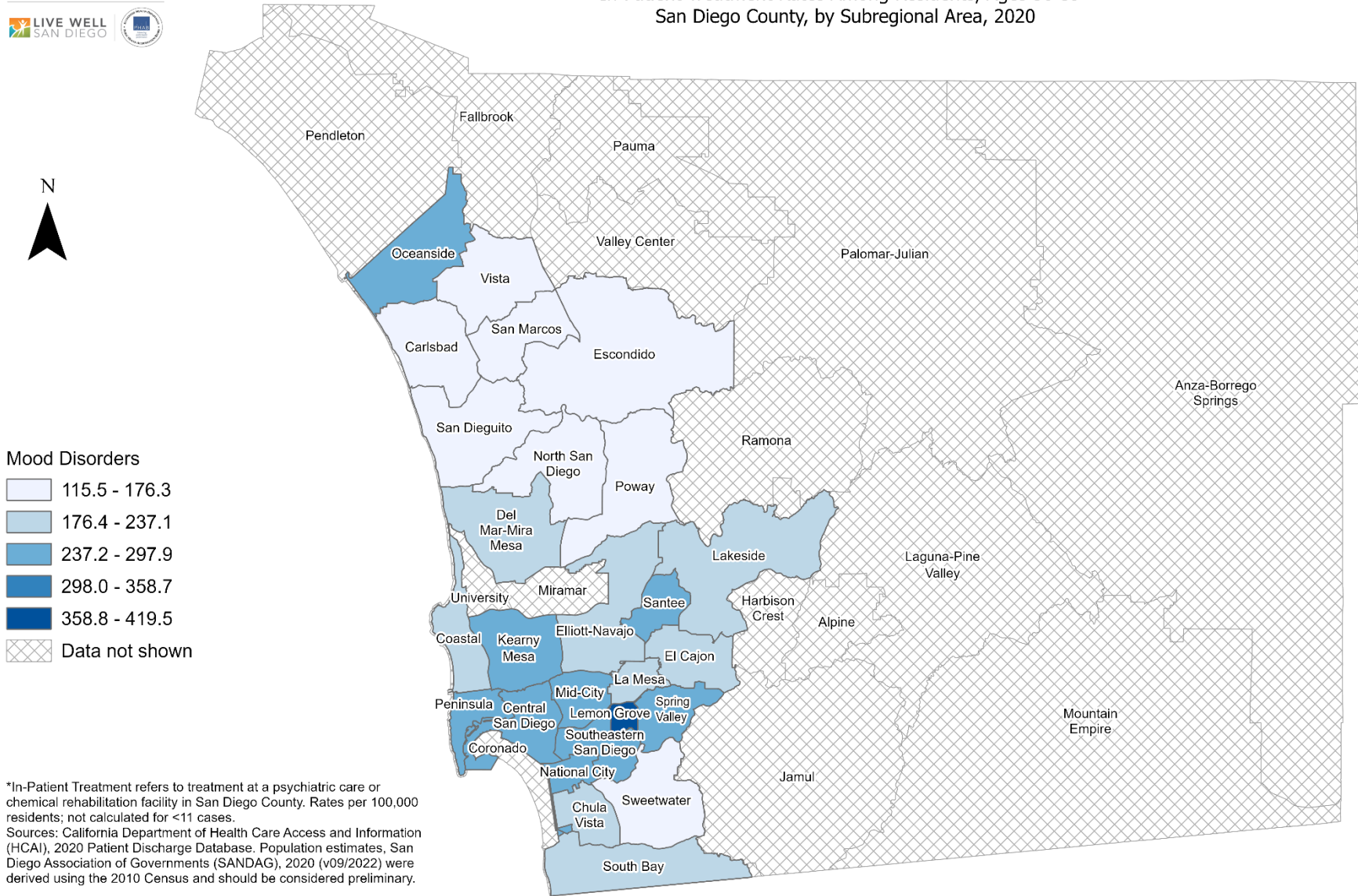
- 201.7 - 273.8
- 273.9 - 346.0
- 346.1 - 418.1
- 418.2 - 490.2
- 490.3 - 562.3
- Data not shown

\*In-Patient Treatment refers to treatment at a psychiatric care or chemical rehabilitation facility in San Diego County. Rates per 100,000 residents; not calculated for <11 cases.  
Sources: California Department of Health Care Access and Information (HCAI), 2020 Patient Discharge Database. Population estimates, San Diego Association of Governments (SANDAG), 2020 (v09/2022) were derived using the 2010 Census and should be considered preliminary.

Maps & Analysis by County of San Diego, Health and Human Services Agency, Public Health Services, Community Health Statistics Unit.  
Contact 619.692.6672. [https://www.sandiegocounty.gov/hhsa/programs/phs/community\\_health\\_statistics/](https://www.sandiegocounty.gov/hhsa/programs/phs/community_health_statistics/)  
March, 2023.  
LiveWellSD.org.



### In-Patient Treatment Rates Among Residents, Ages 30-39\* San Diego County, by Subregional Area, 2020

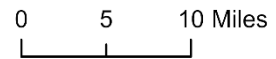


**Mood Disorders**

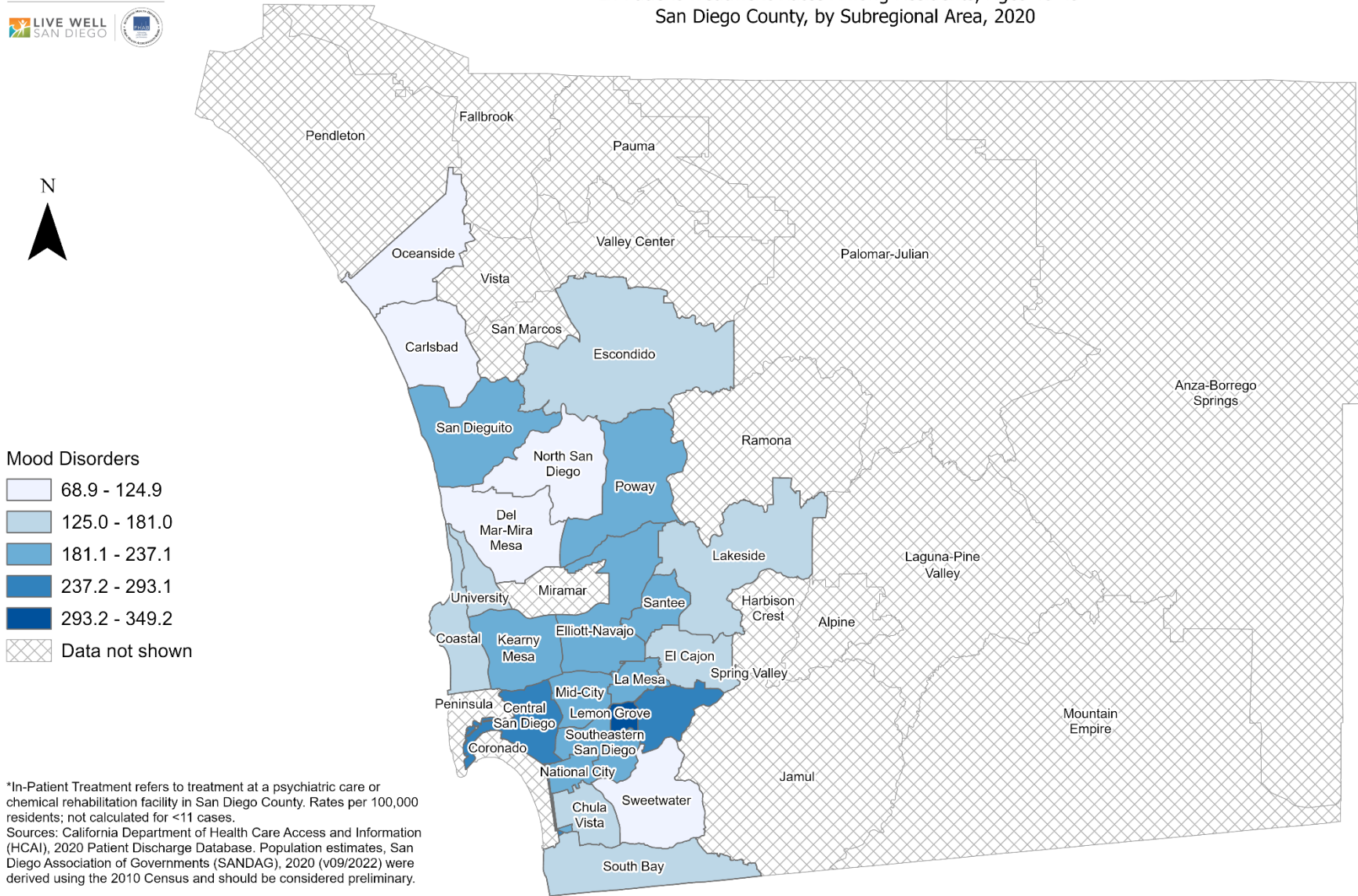
- 115.5 - 176.3
- 176.4 - 237.1
- 237.2 - 297.9
- 298.0 - 358.7
- 358.8 - 419.5
- Data not shown

\*In-Patient Treatment refers to treatment at a psychiatric care or chemical rehabilitation facility in San Diego County. Rates per 100,000 residents; not calculated for <11 cases.  
Sources: California Department of Health Care Access and Information (HCAI), 2020 Patient Discharge Database. Population estimates, San Diego Association of Governments (SANDAG), 2020 (v09/2022) were derived using the 2010 Census and should be considered preliminary.

Maps & Analysis by County of San Diego, Health and Human Services Agency, Public Health Services, Community Health Statistics Unit.  
Contact 619.692.6672. [https://www.sandiegocounty.gov/hhsa/programs/phs/community\\_health\\_statistics/](https://www.sandiegocounty.gov/hhsa/programs/phs/community_health_statistics/)  
March, 2023.  
LiveWellSD.org.



### In-Patient Treatment Rates Among Residents, Ages 40-49\* San Diego County, by Subregional Area, 2020

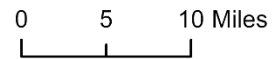


**Mood Disorders**

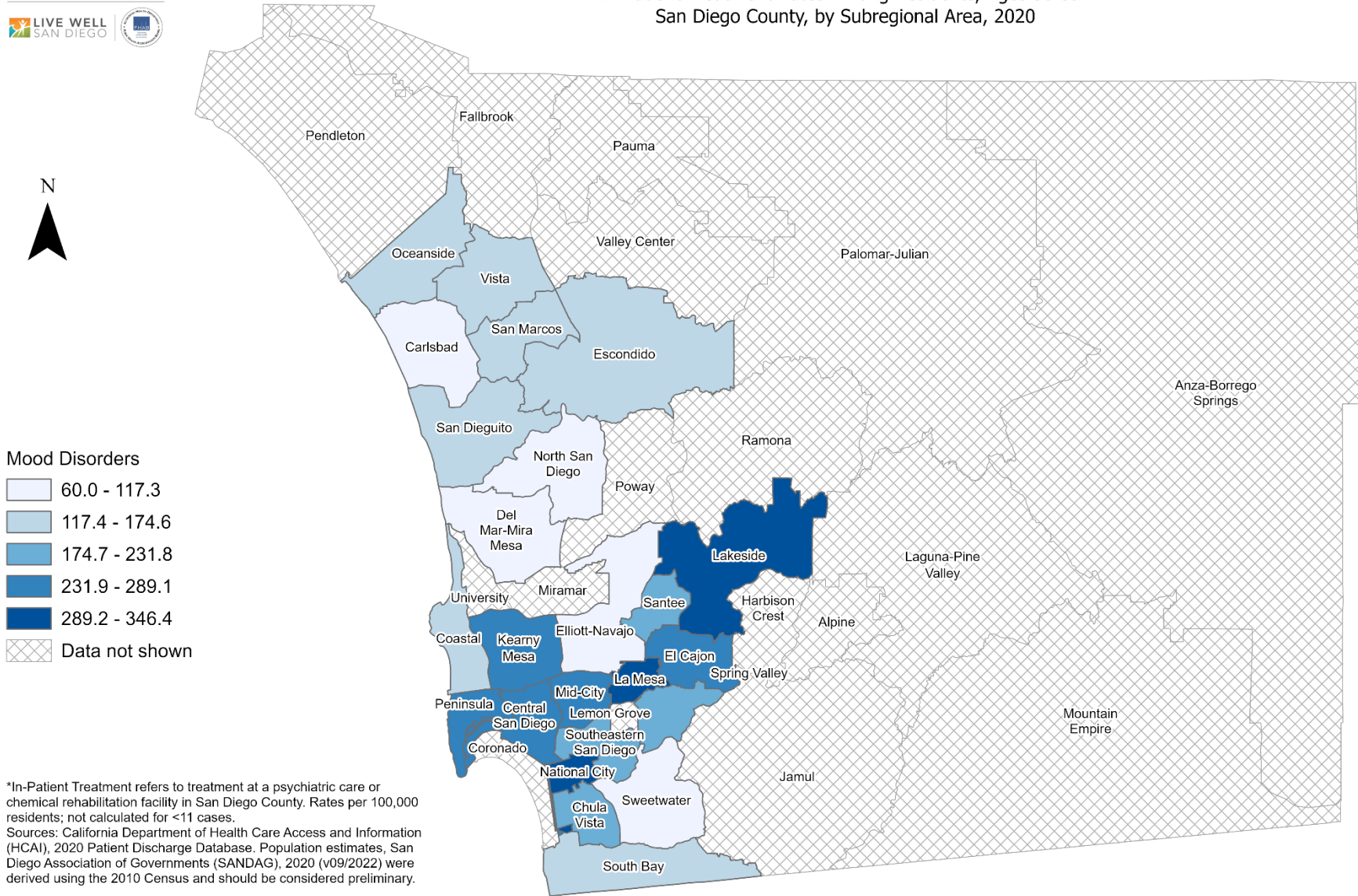
- 68.9 - 124.9
- 125.0 - 181.0
- 181.1 - 237.1
- 237.2 - 293.1
- 293.2 - 349.2
- Data not shown

\*In-Patient Treatment refers to treatment at a psychiatric care or chemical rehabilitation facility in San Diego County. Rates per 100,000 residents; not calculated for <11 cases.  
Sources: California Department of Health Care Access and Information (HCAI), 2020 Patient Discharge Database. Population estimates, San Diego Association of Governments (SANDAG), 2020 (v09/2022) were derived using the 2010 Census and should be considered preliminary.

Maps & Analysis by County of San Diego, Health and Human Services Agency, Public Health Services, Community Health Statistics Unit.  
Contact 619.692.6672. [https://www.sandiegocounty.gov/hhsa/programs/phs/community\\_health\\_statistics/](https://www.sandiegocounty.gov/hhsa/programs/phs/community_health_statistics/)  
March, 2023.  
LiveWellSD.org.



### In-Patient Treatment Rates Among Residents, Ages 50-59\* San Diego County, by Subregional Area, 2020

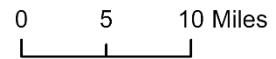


**Mood Disorders**

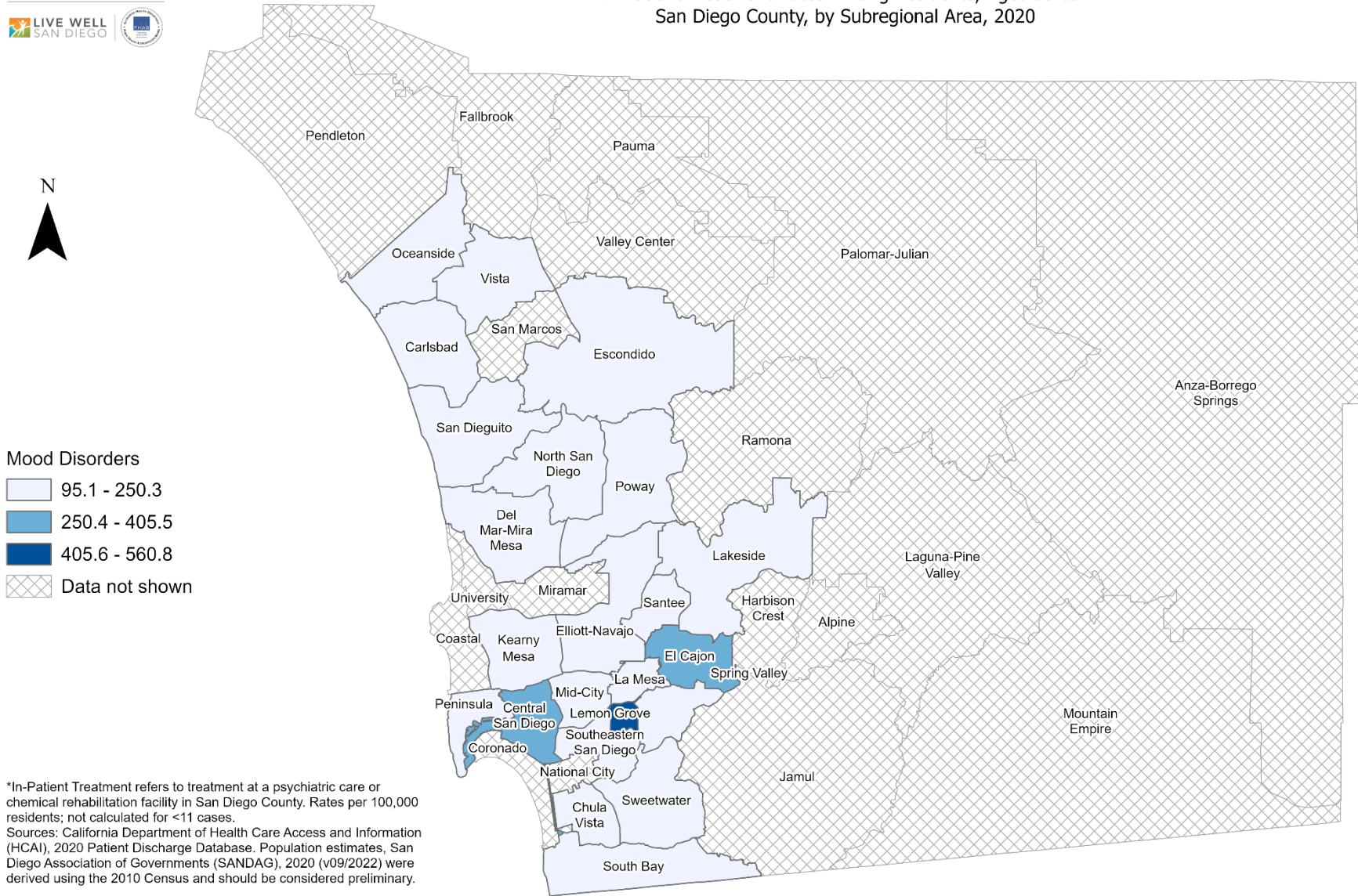
- 60.0 - 117.3
- 117.4 - 174.6
- 174.7 - 231.8
- 231.9 - 289.1
- 289.2 - 346.4
- Data not shown

\*In-Patient Treatment refers to treatment at a psychiatric care or chemical rehabilitation facility in San Diego County. Rates per 100,000 residents; not calculated for <11 cases.  
Sources: California Department of Health Care Access and Information (HCAI), 2020 Patient Discharge Database. Population estimates, San Diego Association of Governments (SANDAG), 2020 (v09/2022) were derived using the 2010 Census and should be considered preliminary.

Maps & Analysis by County of San Diego, Health and Human Services Agency, Public Health Services, Community Health Statistics Unit.  
Contact 619.692.6672. [https://www.sandiegocounty.gov/hhsa/programs/phs/community\\_health\\_statistics/](https://www.sandiegocounty.gov/hhsa/programs/phs/community_health_statistics/).  
March, 2023.  
[LiveWellSD.org](http://LiveWellSD.org).



### In-Patient Treatment Rates Among Residents, Ages 60-69\* San Diego County, by Subregional Area, 2020

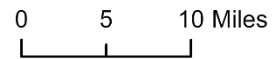


**Mood Disorders**

- 95.1 - 250.3
- 250.4 - 405.5
- 405.6 - 560.8
- Data not shown

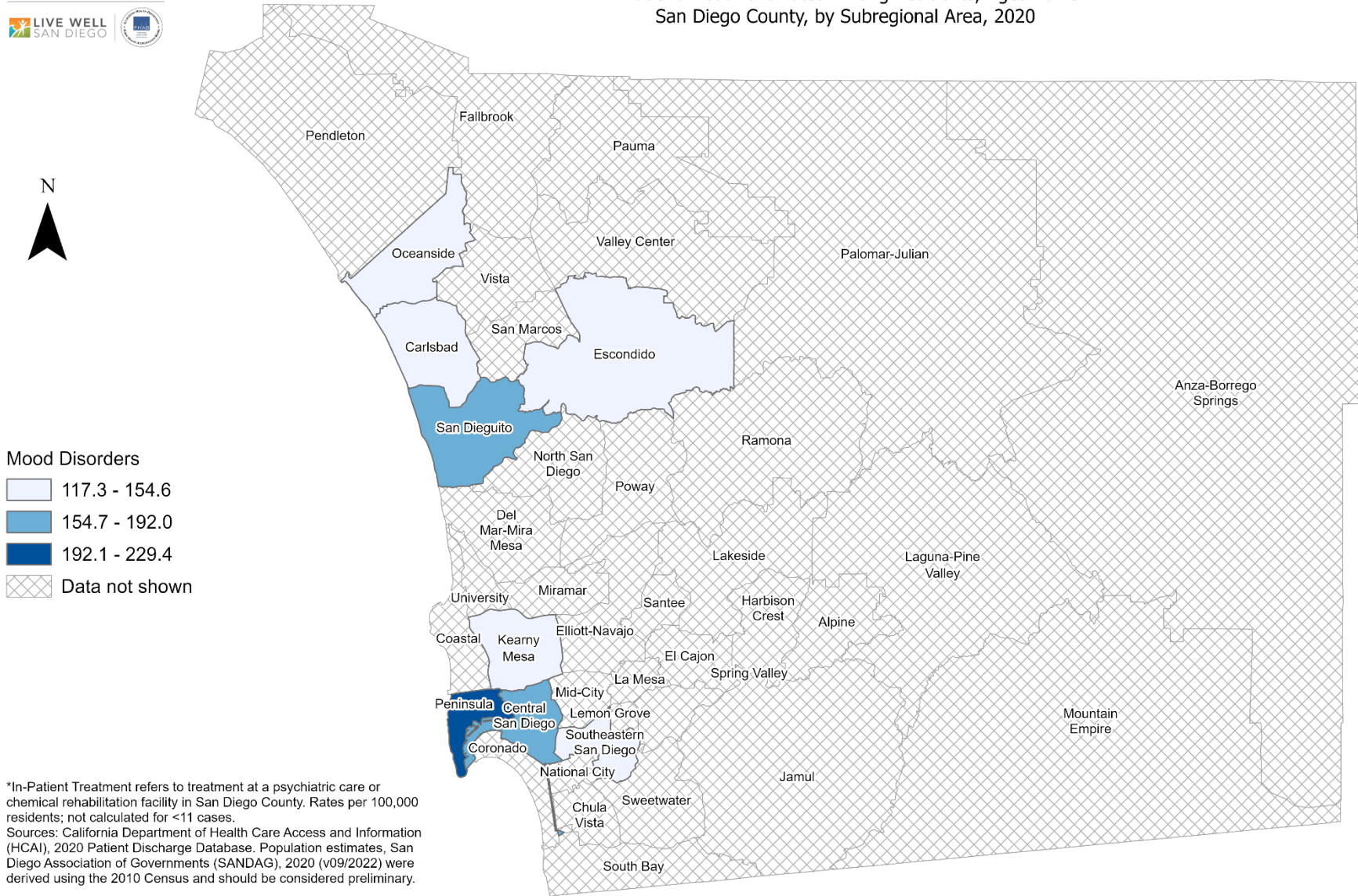
\*In-Patient Treatment refers to treatment at a psychiatric care or chemical rehabilitation facility in San Diego County. Rates per 100,000 residents; not calculated for <11 cases.  
Sources: California Department of Health Care Access and Information (HCAI), 2020 Patient Discharge Database. Population estimates, San Diego Association of Governments (SANDAG), 2020 (v09/2022) were derived using the 2010 Census and should be considered preliminary.

Maps & Analysis by County of San Diego, Health and Human Services Agency, Public Health Services, Community Health Statistics Unit.  
Contact 619.692.6672. [https://www.sandiegocounty.gov/hhsa/programs/phs/community\\_health\\_statistics/](https://www.sandiegocounty.gov/hhsa/programs/phs/community_health_statistics/).  
March, 2023.  
[LiveWellSD.org](http://LiveWellSD.org).





### In-Patient Treatment Rates Among Residents, Ages 70-79\* San Diego County, by Subregional Area, 2020



\*In-Patient Treatment refers to treatment at a psychiatric care or chemical rehabilitation facility in San Diego County. Rates per 100,000 residents; not calculated for <11 cases.  
Sources: California Department of Health Care Access and Information (HCAI), 2020 Patient Discharge Database. Population estimates, San Diego Association of Governments (SANDAG), 2020 (v09/2022) were derived using the 2010 Census and should be considered preliminary.

Maps & Analysis by County of San Diego, Health and Human Services Agency, Public Health Services, Community Health Statistics Unit.  
Contact 619.692.6672. [https://www.sandiegocounty.gov/hhsa/programs/phs/community\\_health\\_statistics/](https://www.sandiegocounty.gov/hhsa/programs/phs/community_health_statistics/).  
March, 2023.  
LiveWellSD.org.

