

MAP ATLAS

Substance Related Disorders San Diego County, 2020

APRIL 2023

County of San Diego | Health and Human
Services Agency | Public Health Services |
Community Health Statistics Unit



Data Sources - San Diego County, 2020

Death* is based on underlying cause of death among San Diego County residents. Rates calculated per 100,000 residents. Rates not calculated for < 11 cases. Maps not produced for conditions/outcomes with no SRA-level rates. Some sections may have no maps.

Sources: California Department of Public Health, Center for Health Statistics, Office of Health Information and Research, Vital Records Business Intelligence System (VRBIS), 2020. ***The COVID-19 pandemic was associated with increases in all-cause mortality. COVID-19 deaths have affected the patterns of mortality including age-adjusted measures.*** SANDAG: San Diego Association of Governments (SANDAG) Population Estimates, 2020 (v09/2022). ***Population estimates for 2020 were derived using the 2010 Census and data should be considered preliminary.***

*For substance/drug overdoses, death rate is based on the multiple/contributing cause of death among San Diego County residents.

Hospitalization refers to treatment at a general acute care facility in San Diego County. Rates calculated per 100,000 residents. Rates not calculated for < 11 cases. Maps not produced for conditions/outcomes with no SRA-level rates. Some sections may have no maps.

Sources: California Department of Health Care Access and Information (HCAI), Patient Discharge Database, 2020. San Diego Association of Governments (SANDAG) Population Estimates, 2020 (v09/2022). ***Population estimates for 2020 were derived using the 2010 Census and data should be considered preliminary.***

Emergency Department (ED) Discharge refers to treatment at an ED facility in San Diego County.

Rates calculated per 100,000 residents. Rates not calculated for < 11 cases. Maps not produced for conditions/outcomes with no SRA-level rates. Some sections may have no maps.

Sources: California Department of Health Care Access and Information (HCAI), Emergency Department Discharge Database, 2020. San Diego Association of Governments (SANDAG) Population Estimates, 2020 (v09/2022). ***Population estimates for 2020 were derived using the 2010 Census and data should be considered preliminary.***

In-Patient Treatment (IPT) refers to treatment at a psychiatric care or chemical rehabilitation facility in San Diego County. Rates calculated per 100,000 residents. Rates not calculated for < 11 cases. Maps not produced for conditions/outcomes with no SRA-level rates. Some sections may have no maps.

Sources: California Department of Health Care Access and Information (HCAI), Patient Discharge Database, 2020. San Diego Association of Governments (SANDAG) Population Estimates, 2020 (v09/2022). ***Population estimates for 2020 were derived using the 2010 Census and data should be considered preliminary.***

Maps & Analysis by County of San Diego, Health and Human Services Agency, Public Health Services, Community Health Statistics Unit. Contact 619.692.6672. March 2023.

https://www.sandiegocounty.gov/hhsa/programs/phs/community_health_statistics/
LiveWellSD.org.

For more detailed explanation of geography, methods, and sources, please refer to CHSU's [2020 Community Profiles Data Guide and Data Dictionary Dashboards](#).

Table of Contents

Section 1: Deaths	1
Section 2: Hospitalizations	3
Section 3: Emergency Department (ED) Discharges	6
Section 4: In-Patient Treatments (IPT).....	18

SECTION 1

Death Rates Among San Diego County Residents by Demographics, 2020:

- Total Rate
- Race/Ethnicity
 - Asian/Pacific Islander (API)
 - Black
 - Hispanic
 - White
- Age Group
 - 0-9 Years
 - 10-19 Years
 - 20-29 Years
 - 30-39 Years
 - 40-49 Years
 - 50-59 Years
 - 60-69 Years
 - 70-79 Years
 - 80+ Years

**No SRA-level rate data
available for this section.**

SECTION 2

Hospitalization Rates Among San Diego County Residents by Demographics, 2020:

- Total Rate
- Race/Ethnicity
 - Asian/Pacific Islander (API)
 - Black
 - Hispanic
 - White
- Age Group
 - 0-9 Years
 - 10-19 Years
 - 20-29 Years
 - 30-39 Years
 - 40-49 Years
 - 50-59 Years
 - 60-69 Years
 - 70-79 Years
 - 80+ Years

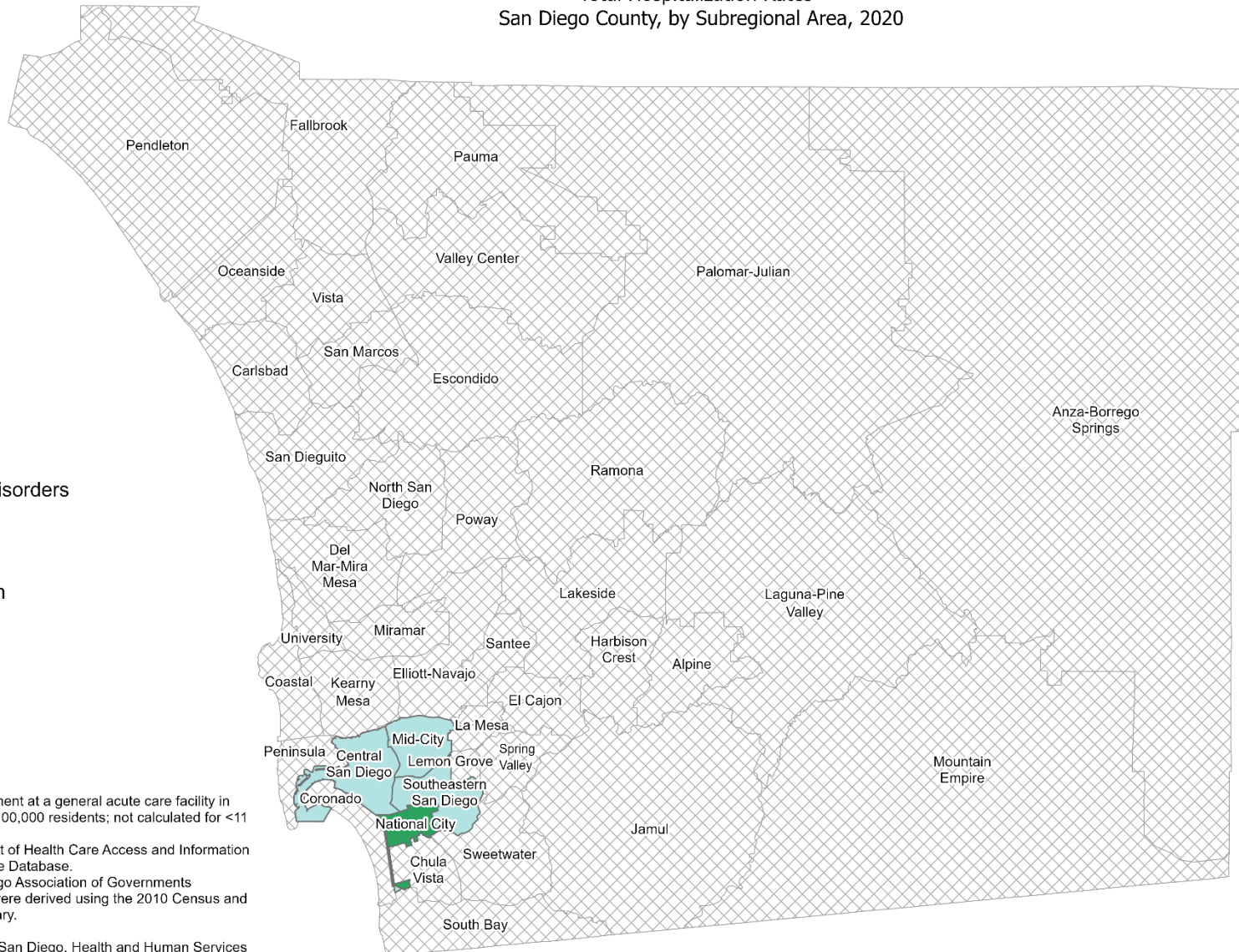


Total Hospitalization Rates* San Diego County, by Subregional Area, 2020



Substance Related Disorders

- 9.8 - 23.7
- 23.8 - 37.5
- Data not shown

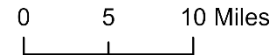


*Hospitalization refers to treatment at a general acute care facility in San Diego County. Rates per 100,000 residents; not calculated for <11 cases.

Sources: California Department of Health Care Access and Information (HCAI), 2020 Patient Discharge Database.

Population estimates, San Diego Association of Governments (SANDAG), 2020 (v09/2022) were derived using the 2010 Census and should be considered preliminary.

Maps & Analysis by County of San Diego, Health and Human Services Agency, Public Health Services, Community Health Statistics Unit.
 Contact 619.692.6672. https://www.sandiegocounty.gov/hhsa/programs/phs/community_health_statistics/.
 March, 2023.
 LiveWellSD.org.



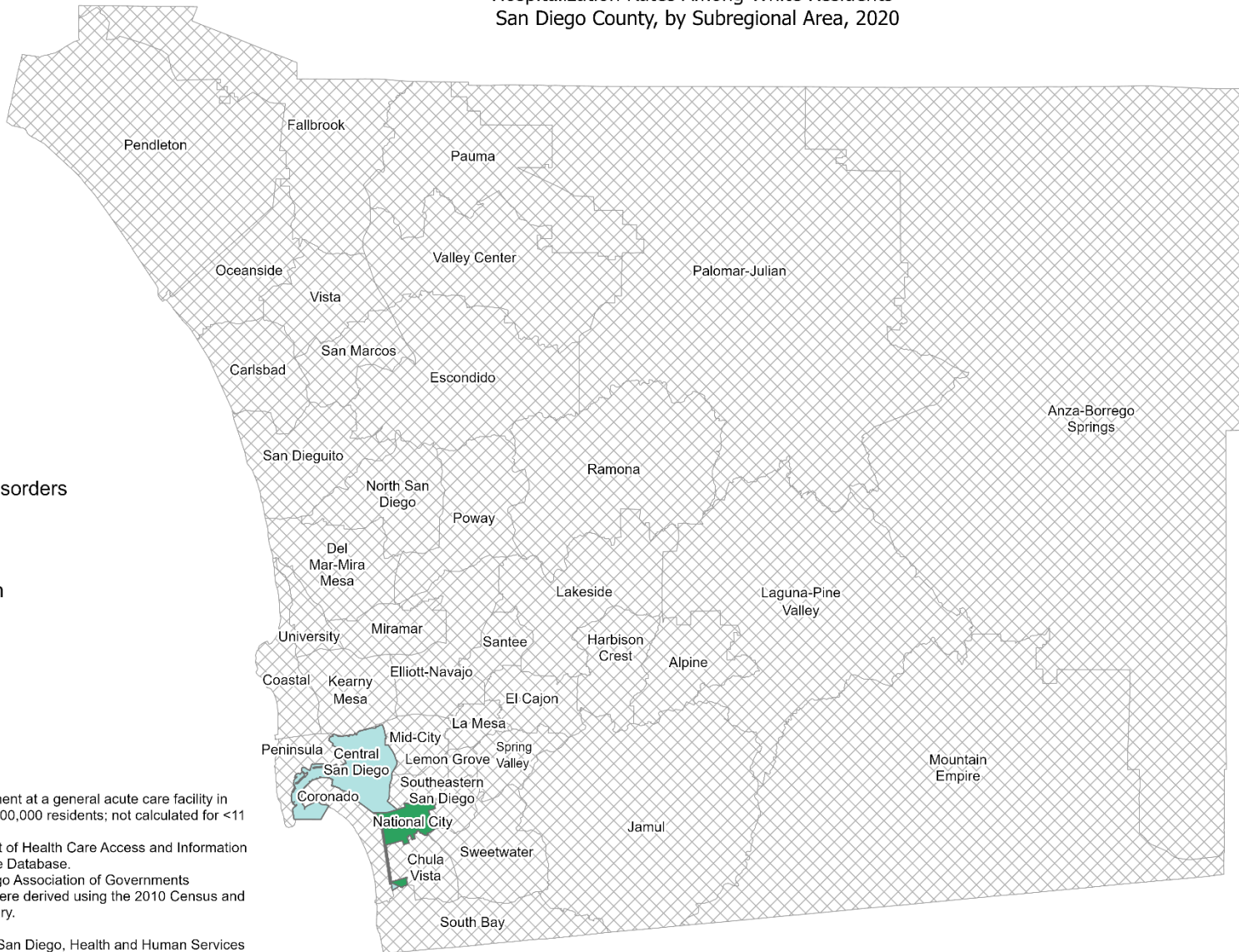


Hospitalization Rates Among White Residents* San Diego County, by Subregional Area, 2020



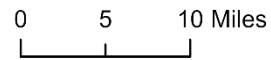
Substance Related Disorders

- 16.7 - 64.0
- 64.1 - 111.4
- Data not shown



*Hospitalization refers to treatment at a general acute care facility in San Diego County. Rates per 100,000 residents; not calculated for <11 cases.
 Sources: California Department of Health Care Access and Information (HCAI), 2020 Patient Discharge Database.
 Population estimates, San Diego Association of Governments (SANDAG), 2020 (v09/2022) were derived using the 2010 Census and should be considered preliminary.

Maps & Analysis by County of San Diego, Health and Human Services Agency, Public Health Services, Community Health Statistics Unit.
 Contact 619.692.6672. https://www.sandiegocounty.gov/hhsa/programs/phs/community_health_statistics/.
 March, 2023.
 LiveWellSD.org.

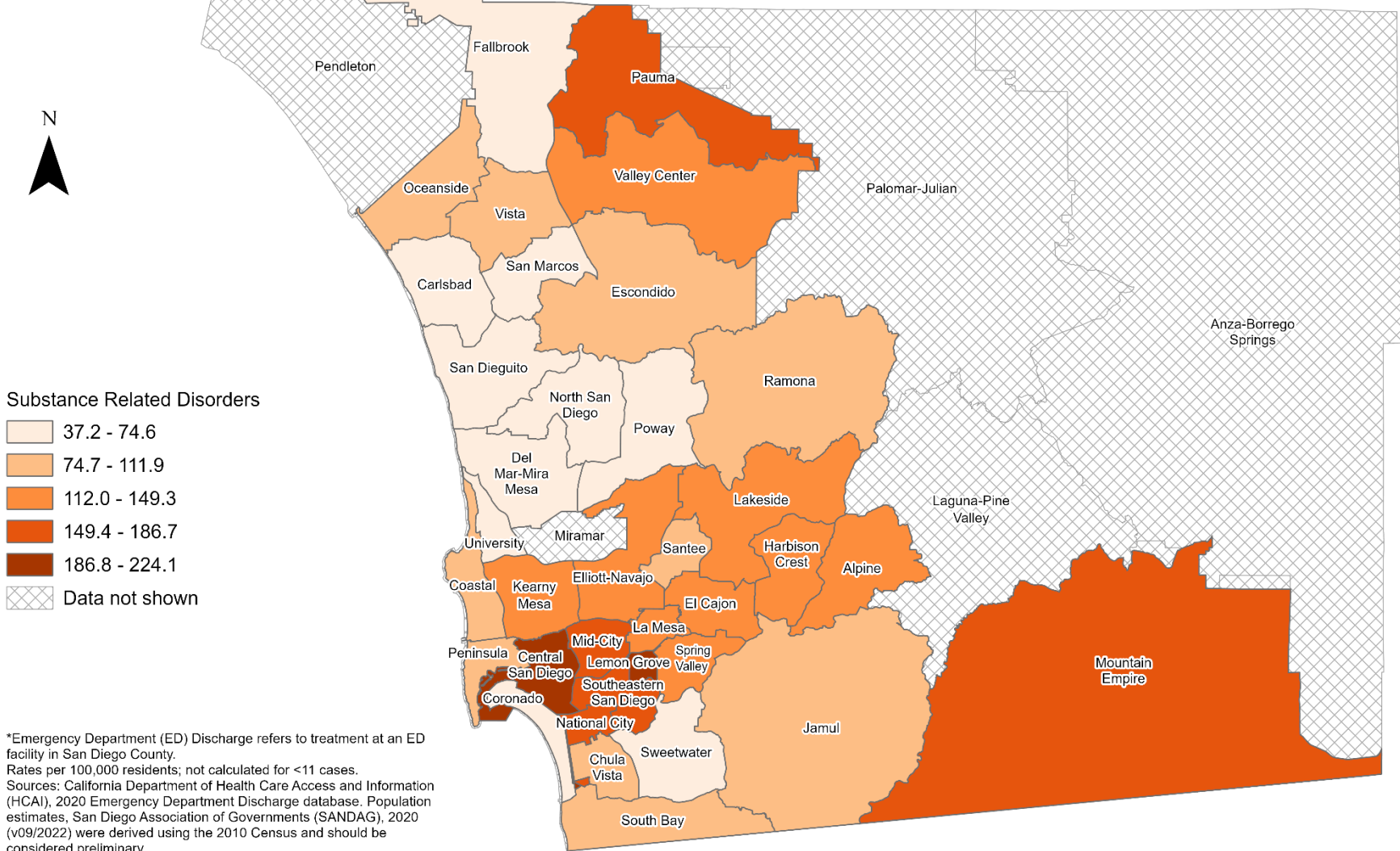


SECTION 3

Emergency Department (ED) Discharge Rates Among San Diego County Residents by Demographics, 2020:

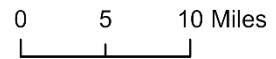
- Total Rate
- Race/Ethnicity
 - Asian/Pacific Islander (API)
 - Black
 - Hispanic
 - White
- Age Group
 - 0-9 Years
 - 10-19 Years
 - 20-29 Years
 - 30-39 Years
 - 40-49 Years
 - 50-59 Years
 - 60-69 Years
 - 70-79 Years
 - 80+ Years

Total Emergency Department Discharge Rates* San Diego County, by Subregional Area, 2020



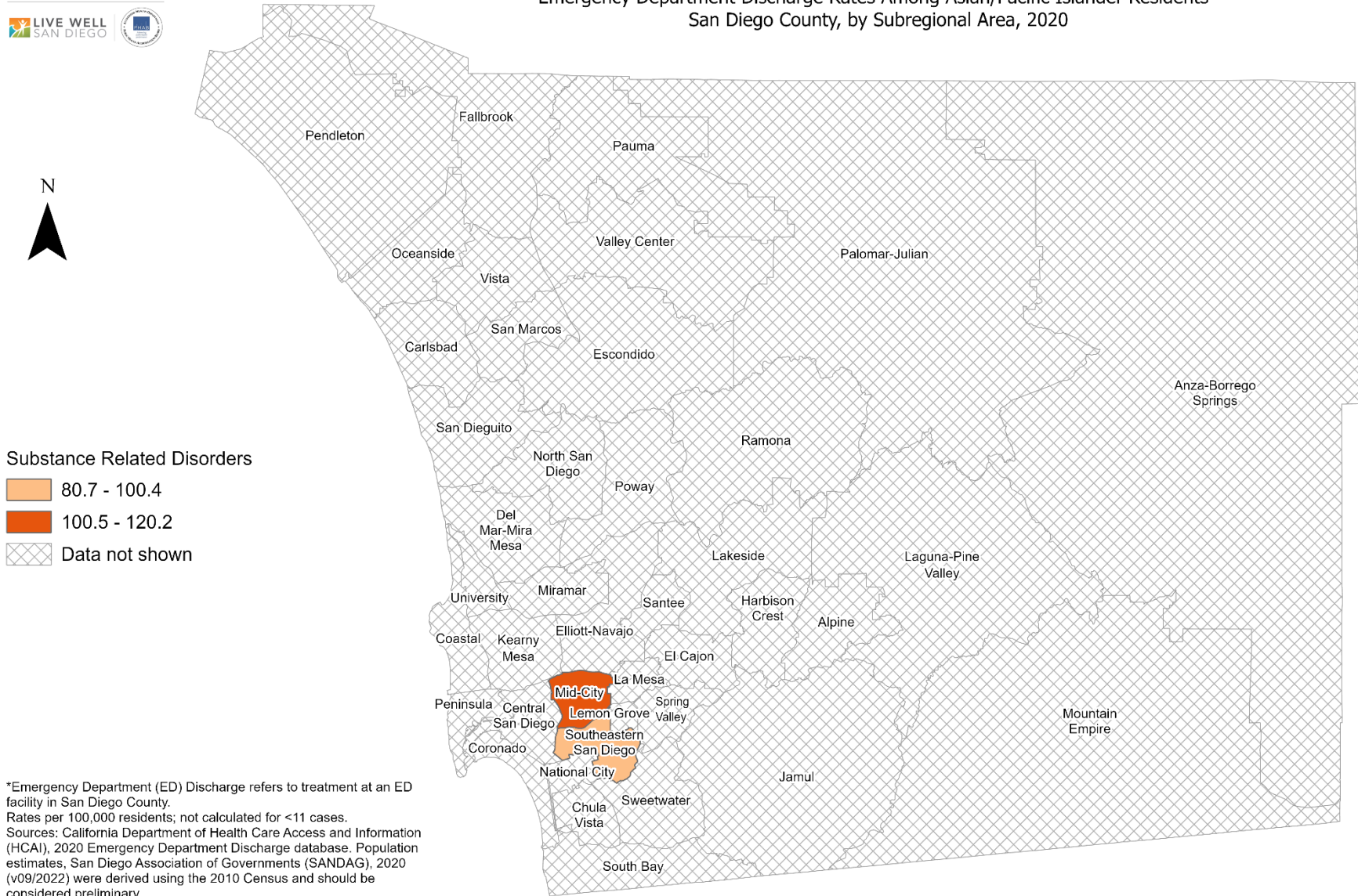
*Emergency Department (ED) Discharge refers to treatment at an ED facility in San Diego County. Rates per 100,000 residents; not calculated for <11 cases. Sources: California Department of Health Care Access and Information (HCAI), 2020 Emergency Department Discharge database. Population estimates, San Diego Association of Governments (SANDAG), 2020 (v09/2022) were derived using the 2010 Census and should be considered preliminary.

Maps & Analysis by County of San Diego, Health and Human Services Agency, Public Health Services, Community Health Statistics Unit. Contact 619.692.6672. https://www.sandiegocounty.gov/hhsa/programs/phs/community_health_statistics/. March, 2023. LiveWellSD.org.



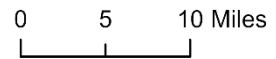


Emergency Department Discharge Rates Among Asian/Pacific Islander Residents* San Diego County, by Subregional Area, 2020

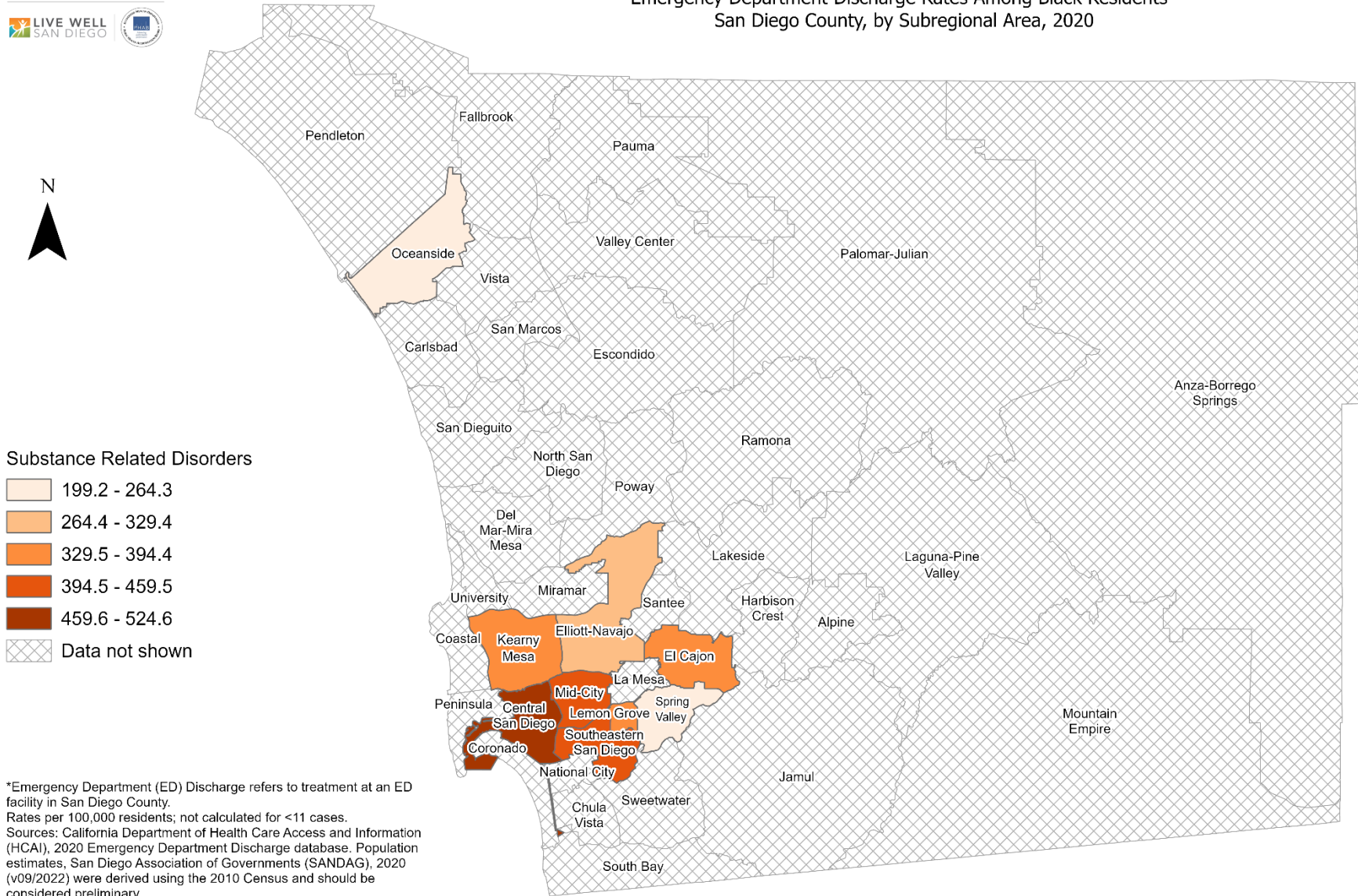


*Emergency Department (ED) Discharge refers to treatment at an ED facility in San Diego County. Rates per 100,000 residents; not calculated for <11 cases. Sources: California Department of Health Care Access and Information (HCAI), 2020 Emergency Department Discharge database. Population estimates, San Diego Association of Governments (SANDAG), 2020 (v09/2022) were derived using the 2010 Census and should be considered preliminary.

Maps & Analysis by County of San Diego, Health and Human Services Agency, Public Health Services, Community Health Statistics Unit. Contact 619.692.6672. https://www.sandiegocounty.gov/hhsa/programs/phs/community_health_statistics/. March, 2023. LiveWellSD.org.

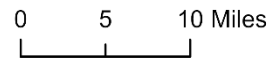


Emergency Department Discharge Rates Among Black Residents* San Diego County, by Subregional Area, 2020

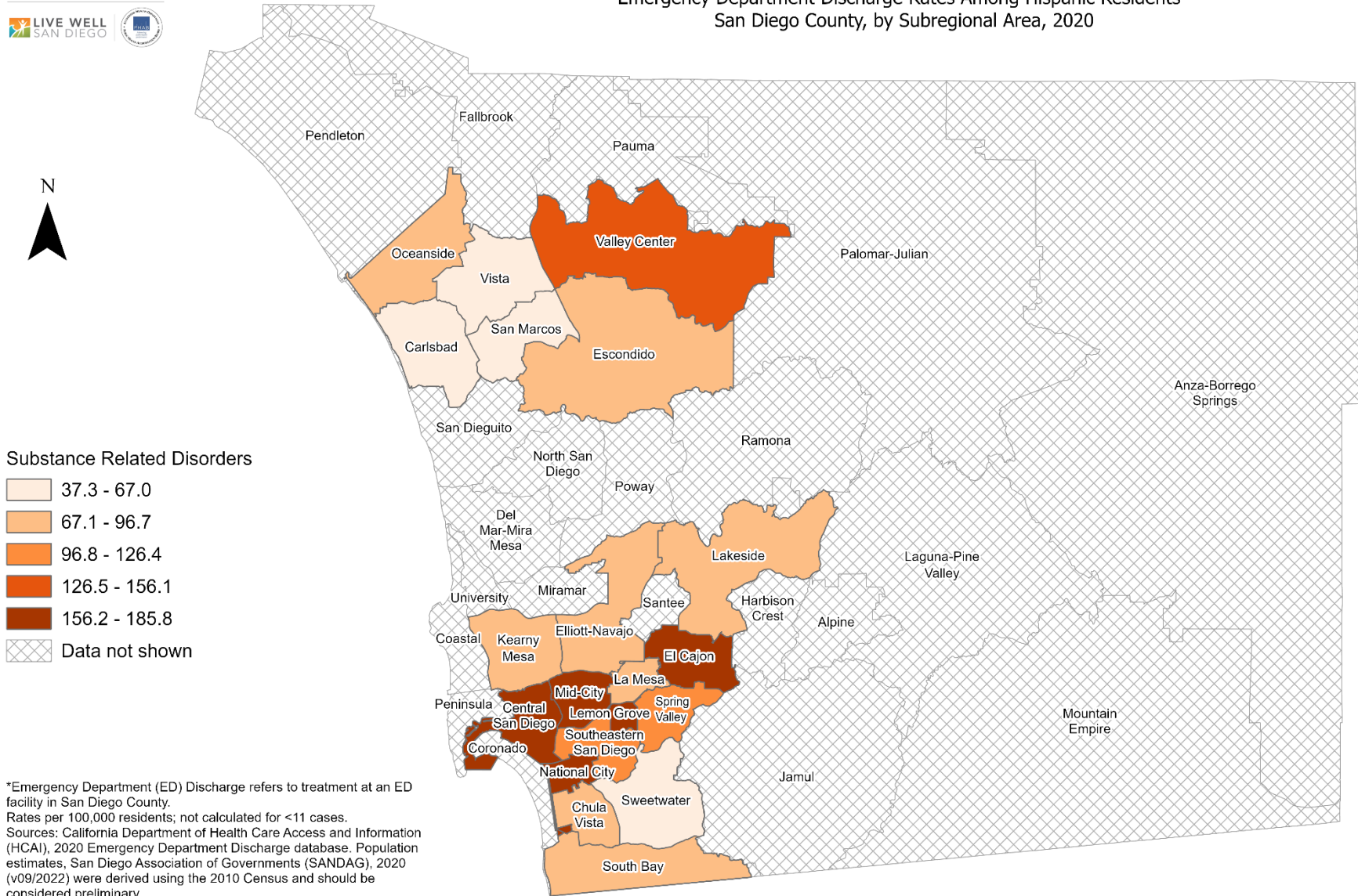


*Emergency Department (ED) Discharge refers to treatment at an ED facility in San Diego County. Rates per 100,000 residents; not calculated for <11 cases. Sources: California Department of Health Care Access and Information (HCAI), 2020 Emergency Department Discharge database. Population estimates, San Diego Association of Governments (SANDAG), 2020 (v09/2022) were derived using the 2010 Census and should be considered preliminary.

Maps & Analysis by County of San Diego, Health and Human Services Agency, Public Health Services, Community Health Statistics Unit. Contact 619.692.6672. https://www.sandiegocounty.gov/hhsa/programs/phs/community_health_statistics/. March, 2023. LiveWellSD.org.



Emergency Department Discharge Rates Among Hispanic Residents* San Diego County, by Subregional Area, 2020

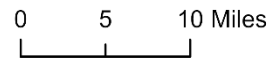


Substance Related Disorders

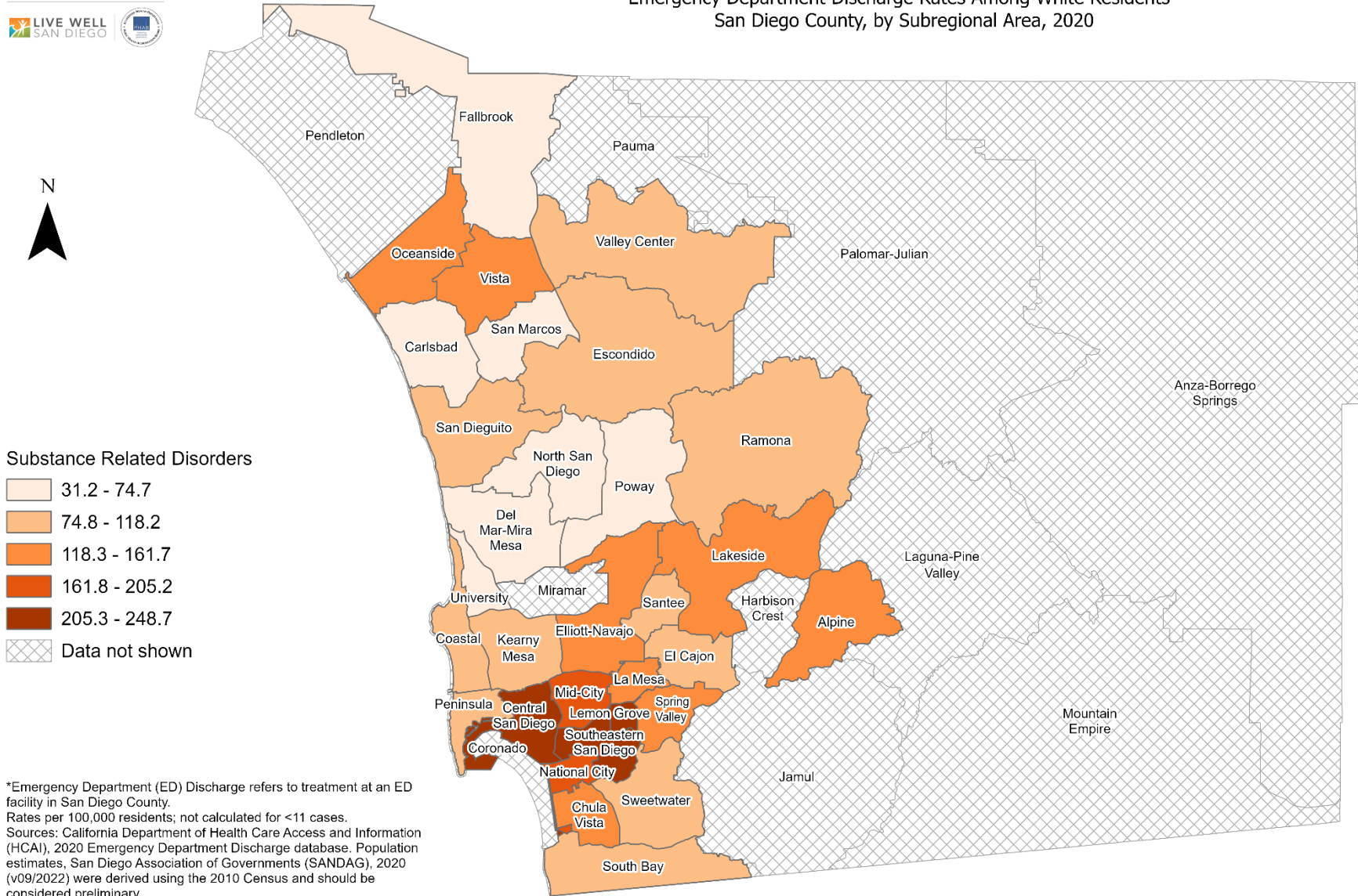
- 37.3 - 67.0
- 67.1 - 96.7
- 96.8 - 126.4
- 126.5 - 156.1
- 156.2 - 185.8
- Data not shown

*Emergency Department (ED) Discharge refers to treatment at an ED facility in San Diego County. Rates per 100,000 residents; not calculated for <11 cases. Sources: California Department of Health Care Access and Information (HCAI), 2020 Emergency Department Discharge database. Population estimates, San Diego Association of Governments (SANDAG), 2020 (v09/2022) were derived using the 2010 Census and should be considered preliminary.

Maps & Analysis by County of San Diego, Health and Human Services Agency, Public Health Services, Community Health Statistics Unit. Contact 619.692.6672. https://www.sandiegocounty.gov/hhsa/programs/phs/community_health_statistics/. March, 2023. LiveWellSD.org.



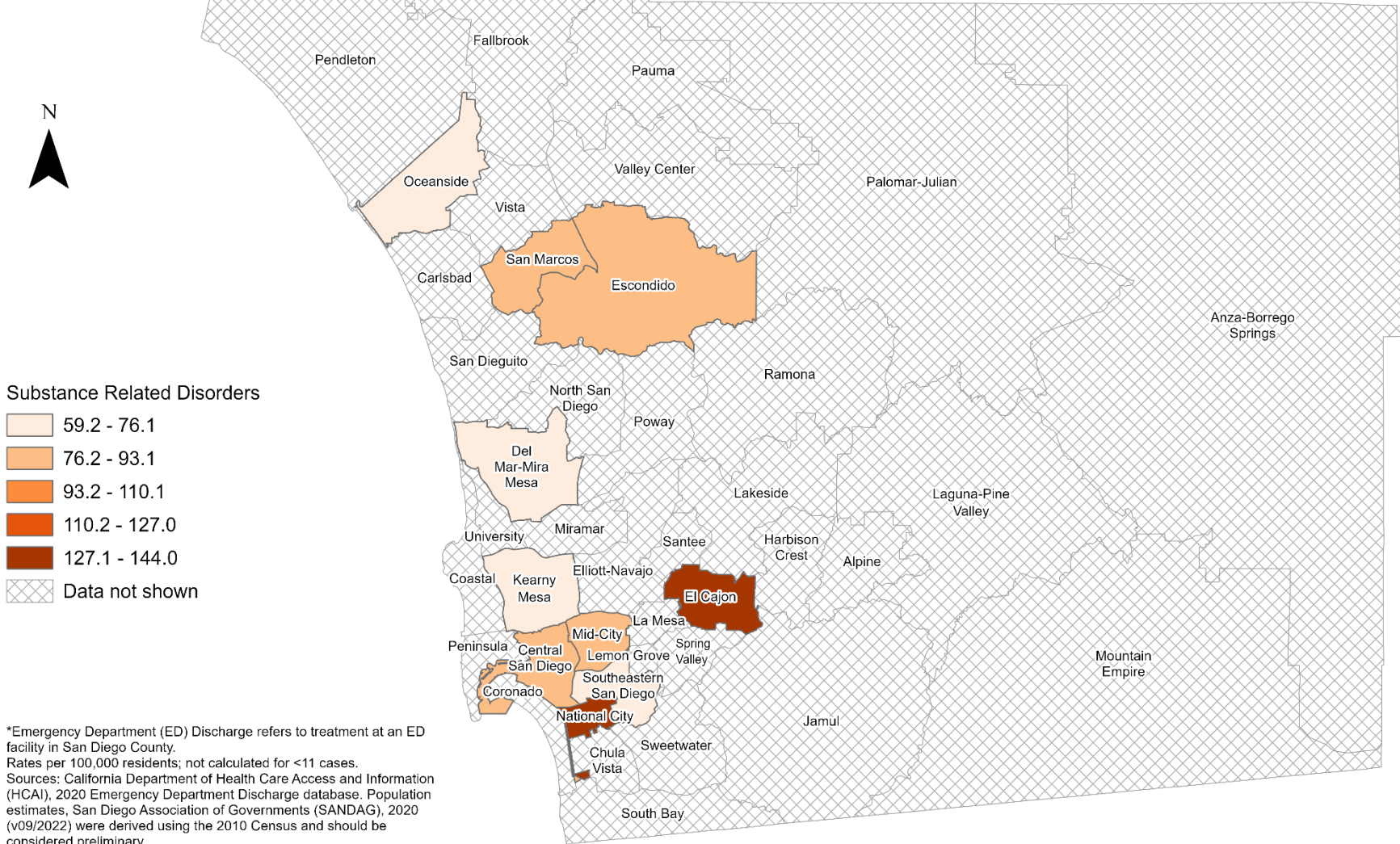
Emergency Department Discharge Rates Among White Residents* San Diego County, by Subregional Area, 2020



*Emergency Department (ED) Discharge refers to treatment at an ED facility in San Diego County. Rates per 100,000 residents; not calculated for <11 cases. Sources: California Department of Health Care Access and Information (HCAI), 2020 Emergency Department Discharge database. Population estimates, San Diego Association of Governments (SANDAG), 2020 (v09/2022) were derived using the 2010 Census and should be considered preliminary.

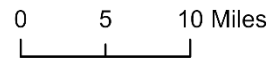


Emergency Department Discharge Rates Among Residents, Ages 10-19* San Diego County, by Subregional Area, 2020

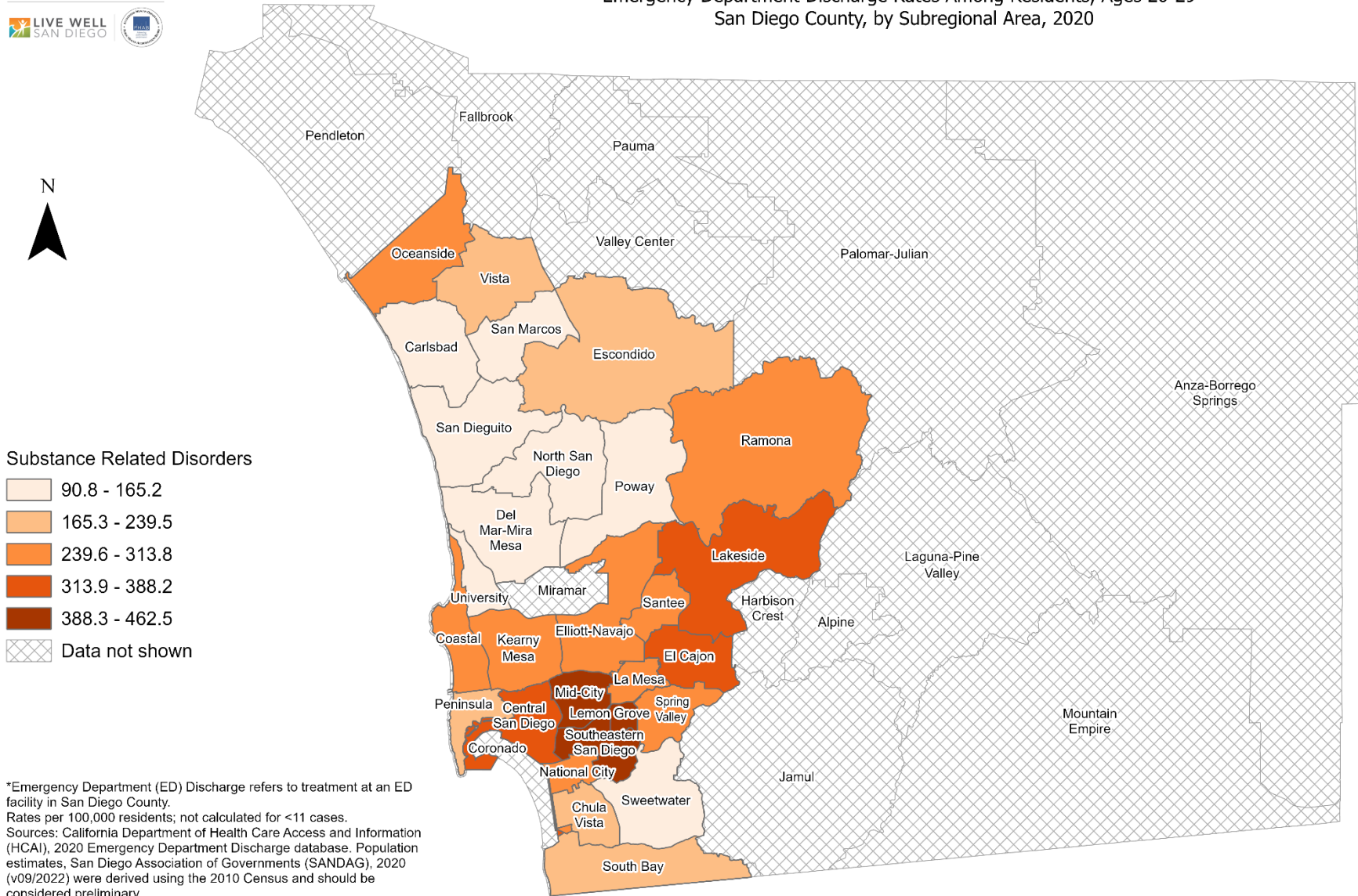


*Emergency Department (ED) Discharge refers to treatment at an ED facility in San Diego County. Rates per 100,000 residents; not calculated for <11 cases. Sources: California Department of Health Care Access and Information (HCAI), 2020 Emergency Department Discharge database. Population estimates, San Diego Association of Governments (SANDAG), 2020 (v09/2022) were derived using the 2010 Census and should be considered preliminary.

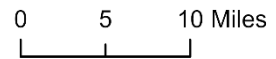
Maps & Analysis by County of San Diego, Health and Human Services Agency, Public Health Services, Community Health Statistics Unit. Contact 619.692.6672. https://www.sandiegocounty.gov/hhsa/programs/phs/community_health_statistics/. March, 2023. LiveWellSD.org.



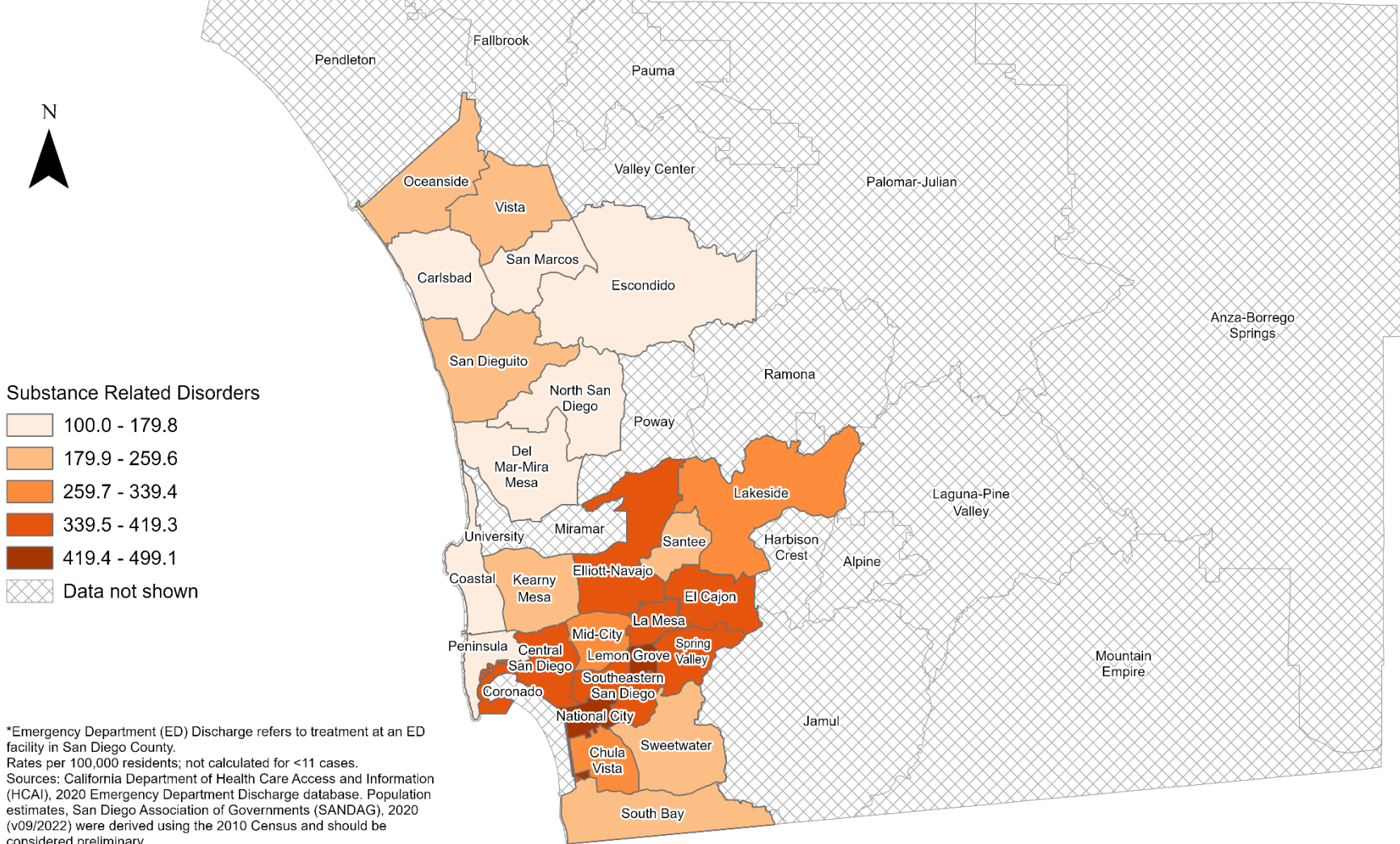
Emergency Department Discharge Rates Among Residents, Ages 20-29* San Diego County, by Subregional Area, 2020



*Emergency Department (ED) Discharge refers to treatment at an ED facility in San Diego County. Rates per 100,000 residents; not calculated for <11 cases. Sources: California Department of Health Care Access and Information (HCAI), 2020 Emergency Department Discharge database. Population estimates, San Diego Association of Governments (SANDAG), 2020 (v09/2022) were derived using the 2010 Census and should be considered preliminary.

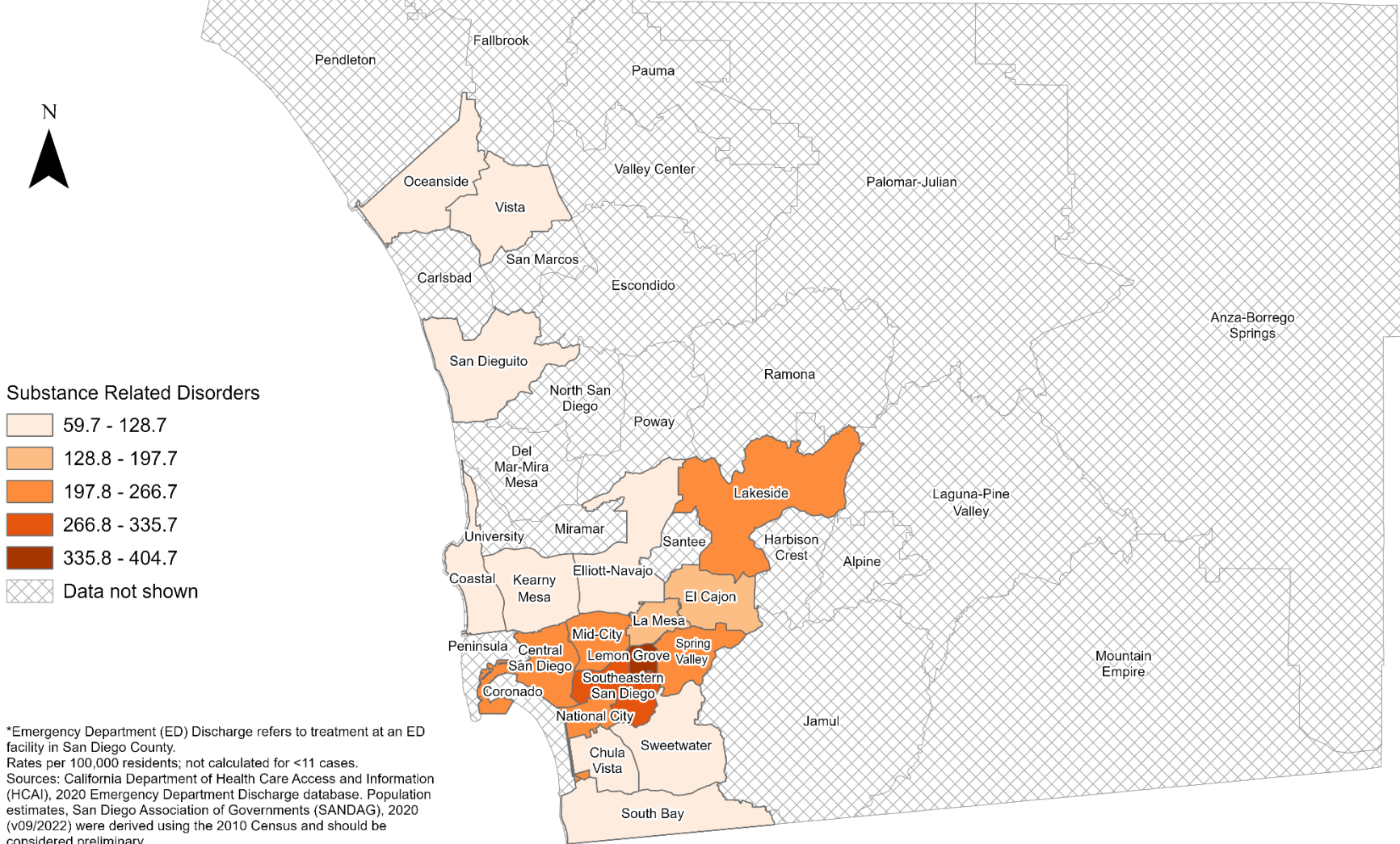


Emergency Department Discharge Rates Among Residents, Ages 30-39* San Diego County, by Subregional Area, 2020



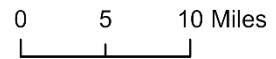
*Emergency Department (ED) Discharge refers to treatment at an ED facility in San Diego County. Rates per 100,000 residents; not calculated for <11 cases. Sources: California Department of Health Care Access and Information (HCAI), 2020 Emergency Department Discharge database. Population estimates, San Diego Association of Governments (SANDAG), 2020 (v09/2022) were derived using the 2010 Census and should be considered preliminary.

Emergency Department Discharge Rates Among Residents, Ages 40-49* San Diego County, by Subregional Area, 2020

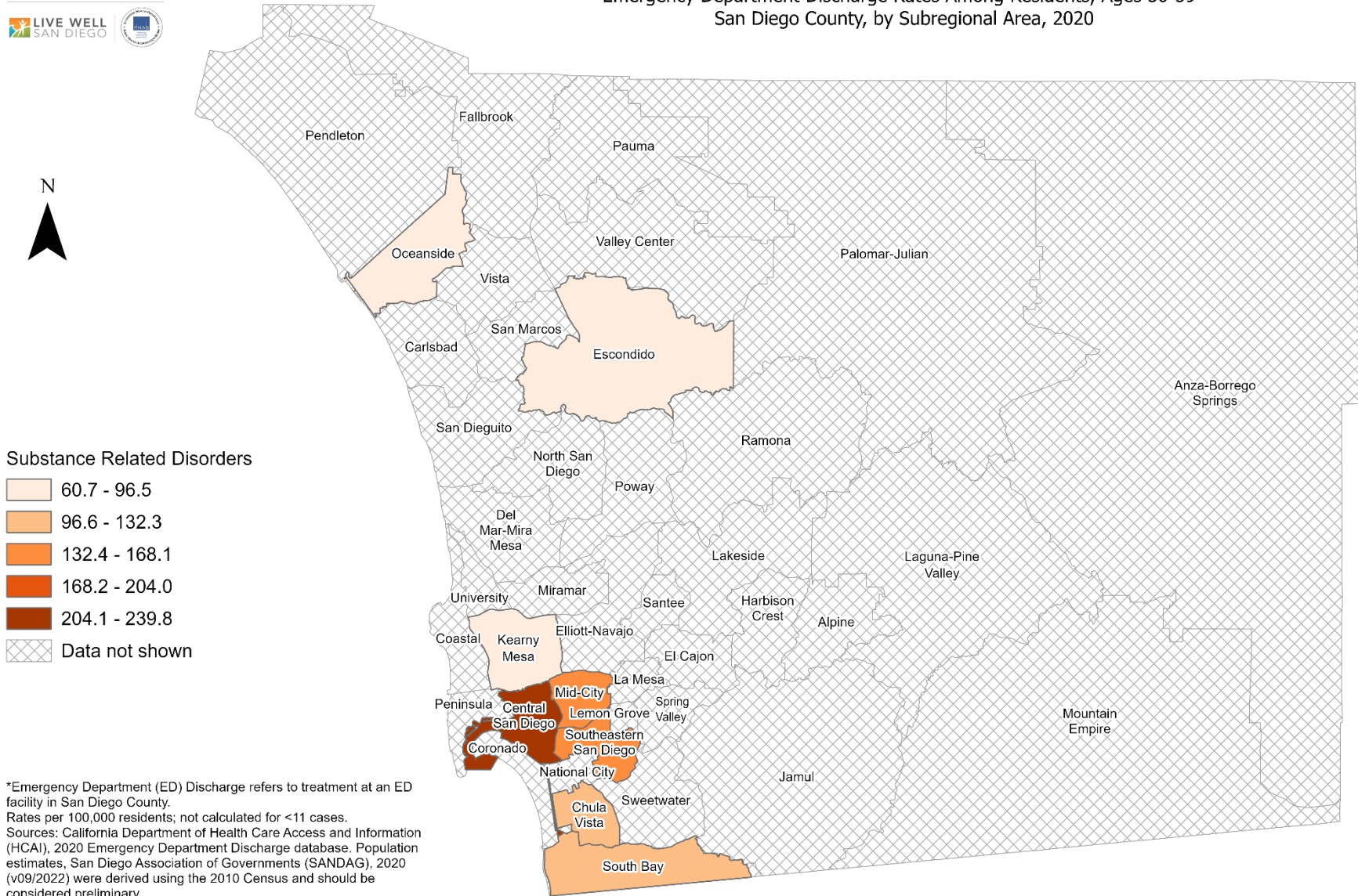


*Emergency Department (ED) Discharge refers to treatment at an ED facility in San Diego County. Rates per 100,000 residents; not calculated for <11 cases. Sources: California Department of Health Care Access and Information (HCAI), 2020 Emergency Department Discharge database. Population estimates, San Diego Association of Governments (SANDAG), 2020 (v09/2022) were derived using the 2010 Census and should be considered preliminary.

Maps & Analysis by County of San Diego, Health and Human Services Agency, Public Health Services, Community Health Statistics Unit. Contact 619.692.6672. https://www.sandiegocounty.gov/hhsa/programs/phs/community_health_statistics/. March, 2023. LiveWellSD.org.



Emergency Department Discharge Rates Among Residents, Ages 50-59* San Diego County, by Subregional Area, 2020



*Emergency Department (ED) Discharge refers to treatment at an ED facility in San Diego County. Rates per 100,000 residents; not calculated for <11 cases. Sources: California Department of Health Care Access and Information (HCAI), 2020 Emergency Department Discharge database. Population estimates, San Diego Association of Governments (SANDAG), 2020 (v09/2022) were derived using the 2010 Census and should be considered preliminary.

Maps & Analysis by County of San Diego, Health and Human Services Agency, Public Health Services, Community Health Statistics Unit. Contact 619.692.6672. https://www.sandiegocounty.gov/hhsa/programs/phs/community_health_statistics/. March, 2023. LiveWellSD.org.

0 5 10 Miles



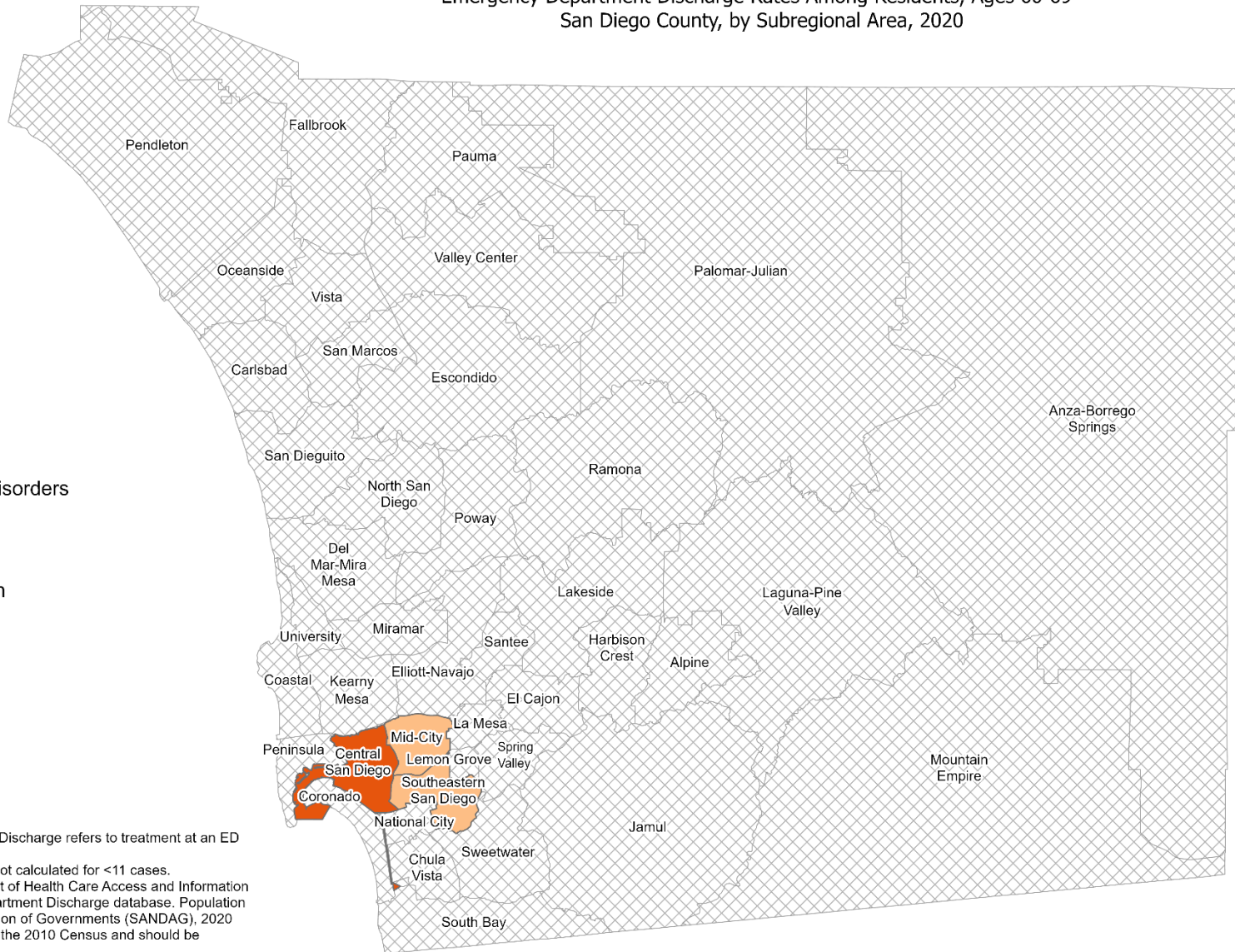


Emergency Department Discharge Rates Among Residents, Ages 60-69* San Diego County, by Subregional Area, 2020



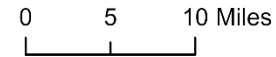
Substance Related Disorders

- 69.4 - 131.5
- 131.6 - 193.7
- Data not shown



*Emergency Department (ED) Discharge refers to treatment at an ED facility in San Diego County.
 Rates per 100,000 residents; not calculated for <11 cases.
 Sources: California Department of Health Care Access and Information (HCAI), 2020 Emergency Department Discharge database. Population estimates, San Diego Association of Governments (SANDAG), 2020 (v09/2022) were derived using the 2010 Census and should be considered preliminary.

Maps & Analysis by County of San Diego, Health and Human Services Agency, Public Health Services, Community Health Statistics Unit.
 Contact 619.692.6672. https://www.sandiegocounty.gov/hhsa/programs/phs/community_health_statistics/.
 March, 2023.
 LiveWellSD.org.

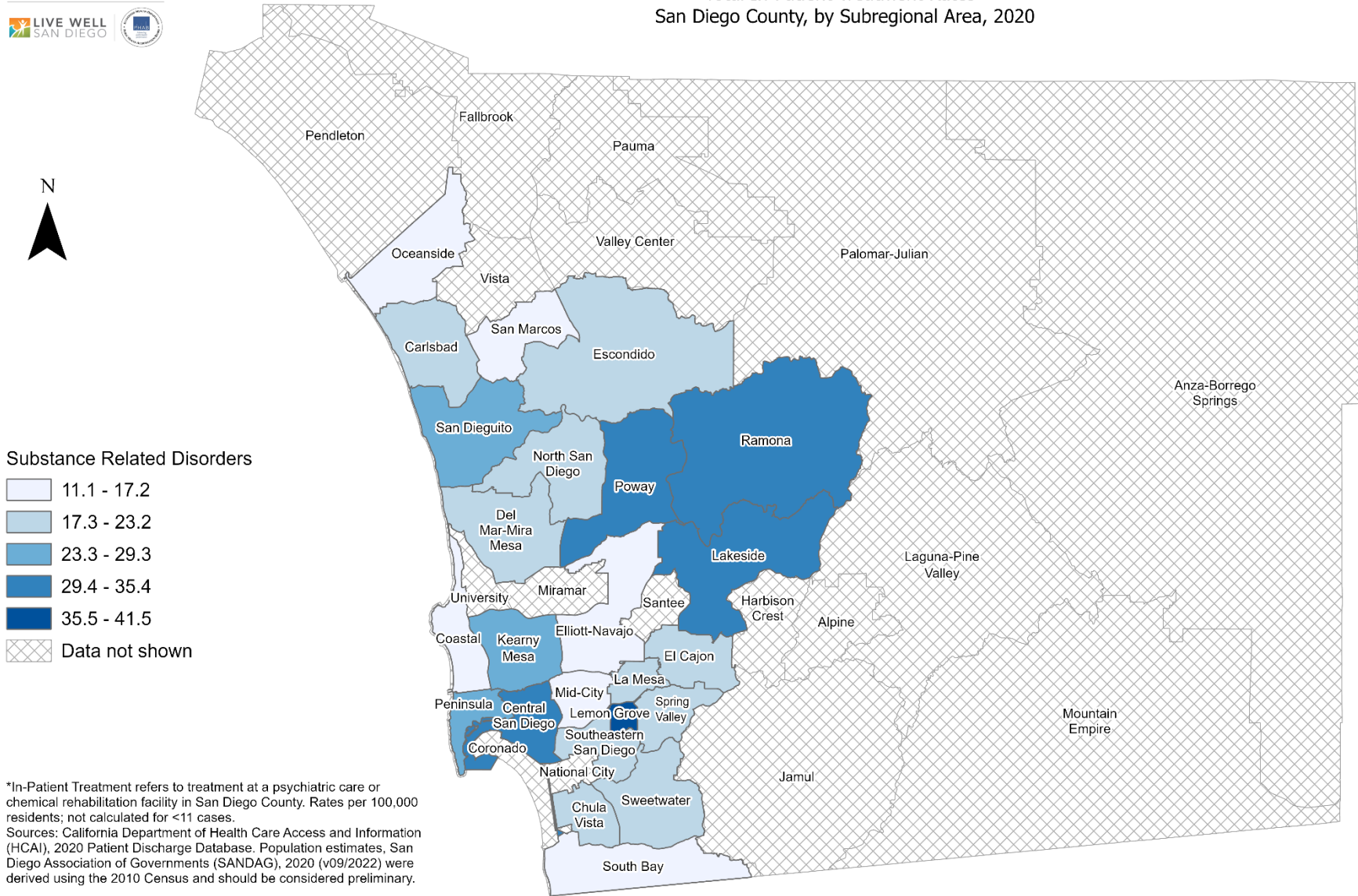


SECTION 4

In-Patient Treatment (IPT) Rates Among San Diego County Residents by Demographics, 2020:

- Total Rate
- Race/Ethnicity
 - Asian/Pacific Islander (API)
 - Black
 - Hispanic
 - White
- Age Group
 - 0-9 Years
 - 10-19 Years
 - 20-29 Years
 - 30-39 Years
 - 40-49 Years
 - 50-59 Years
 - 60-69 Years
 - 70-79 Years
 - 80+ Years

Total In-Patient Treatment Rates* San Diego County, by Subregional Area, 2020

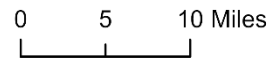


Substance Related Disorders

- 11.1 - 17.2
- 17.3 - 23.2
- 23.3 - 29.3
- 29.4 - 35.4
- 35.5 - 41.5
- Data not shown

*In-Patient Treatment refers to treatment at a psychiatric care or chemical rehabilitation facility in San Diego County. Rates per 100,000 residents; not calculated for <11 cases.
Sources: California Department of Health Care Access and Information (HCAI), 2020 Patient Discharge Database. Population estimates, San Diego Association of Governments (SANDAG), 2020 (v09/2022) were derived using the 2010 Census and should be considered preliminary.

Maps & Analysis by County of San Diego, Health and Human Services Agency, Public Health Services, Community Health Statistics Unit.
Contact 619.692.6672. https://www.sandiegocounty.gov/hhsa/programs/phs/community_health_statistics/
March, 2023.
LiveWellSD.org.





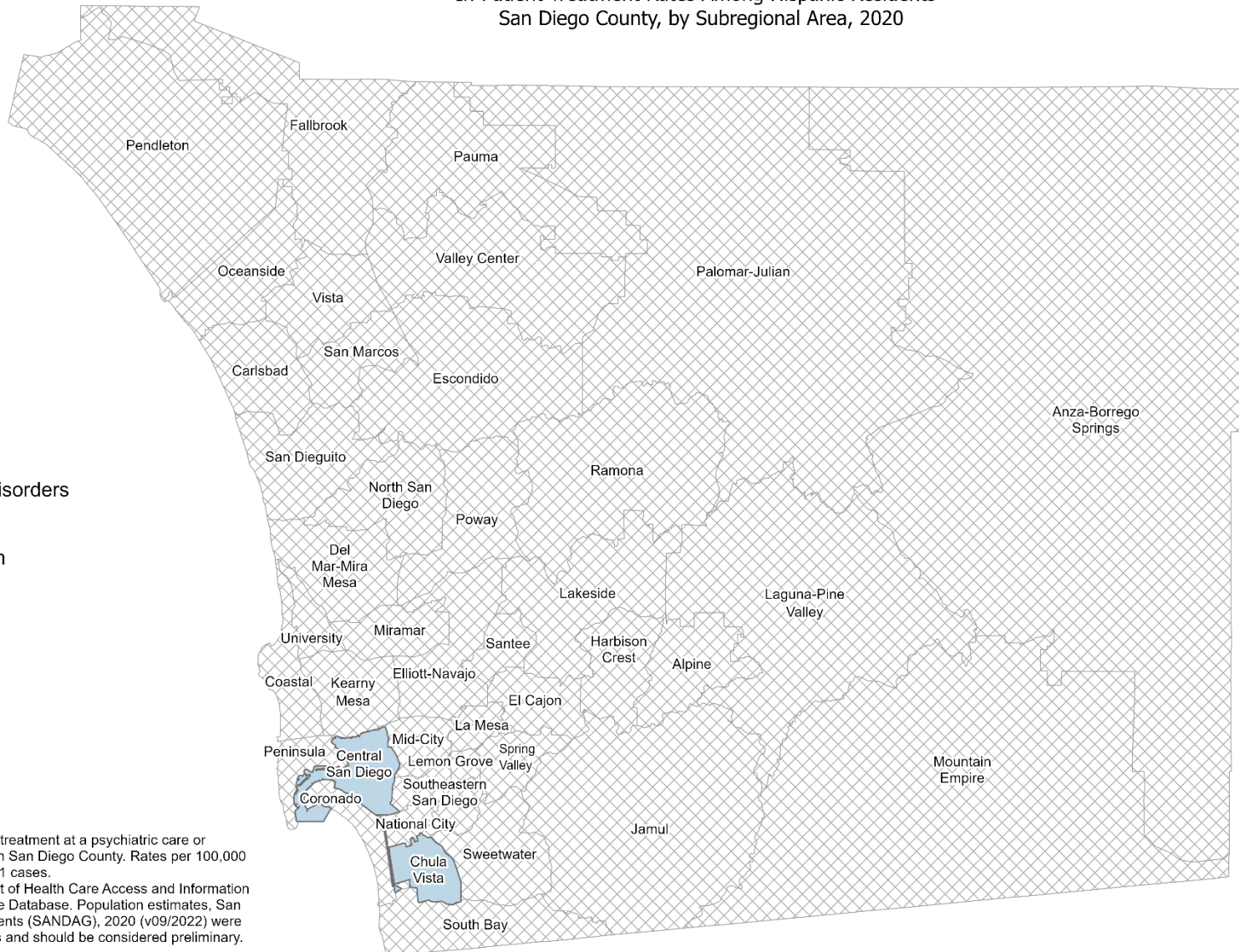
In-Patient Treatment Rates Among Hispanic Residents* San Diego County, by Subregional Area, 2020



Substance Related Disorders

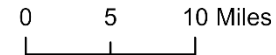
17.2 - 18.5

Data not shown

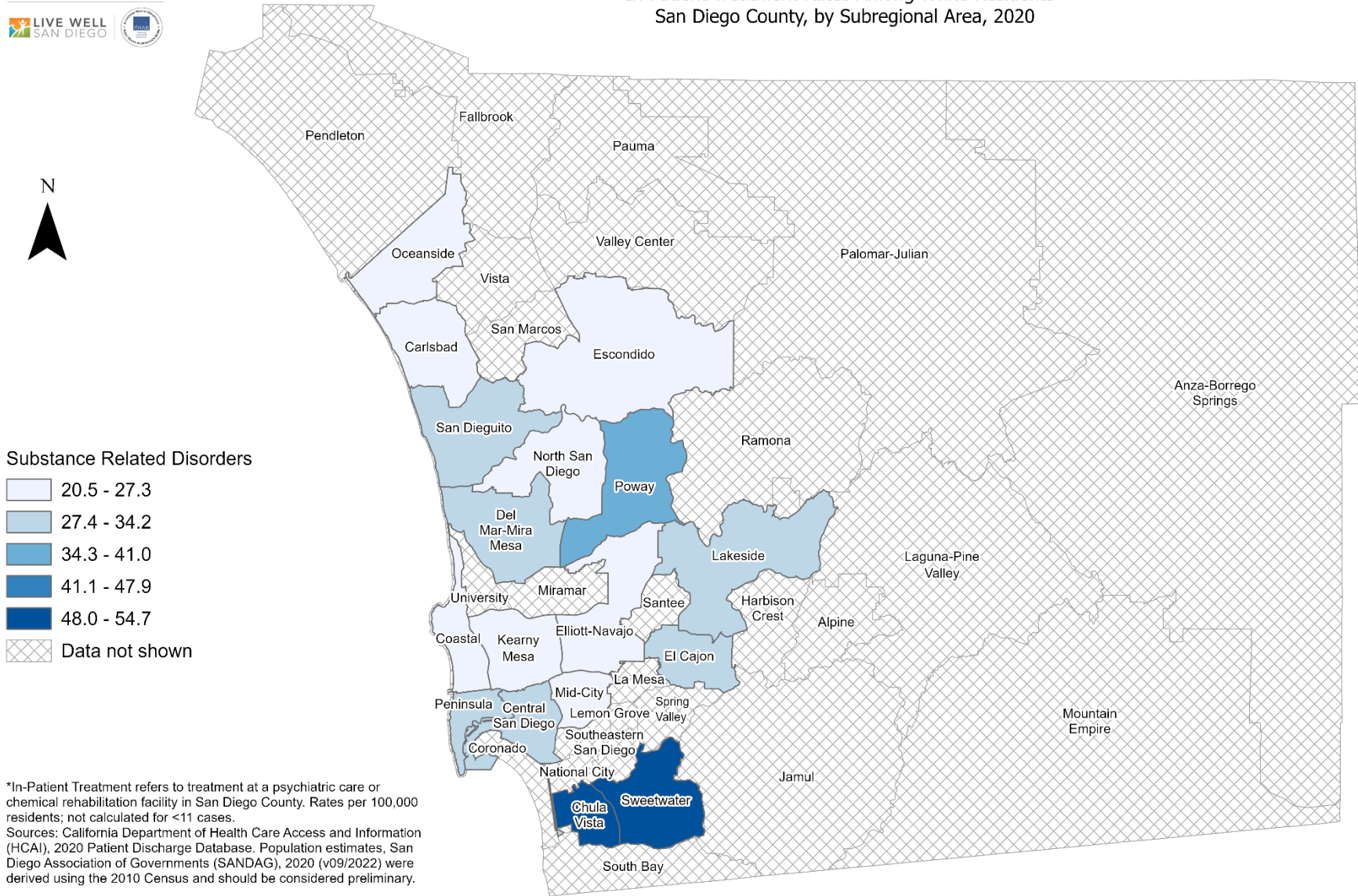


*In-Patient Treatment refers to treatment at a psychiatric care or chemical rehabilitation facility in San Diego County. Rates per 100,000 residents; not calculated for <11 cases.
Sources: California Department of Health Care Access and Information (HCAI), 2020 Patient Discharge Database. Population estimates, San Diego Association of Governments (SANDAG), 2020 (v09/2022) were derived using the 2010 Census and should be considered preliminary.

Maps & Analysis by County of San Diego, Health and Human Services Agency, Public Health Services, Community Health Statistics Unit.
Contact 619.692.6672. https://www.sandiegocounty.gov/hhsa/programs/phs/community_health_statistics/.
March, 2023.
LiveWellSD.org.

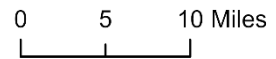


In-Patient Treatment Rates Among White Residents* San Diego County, by Subregional Area, 2020

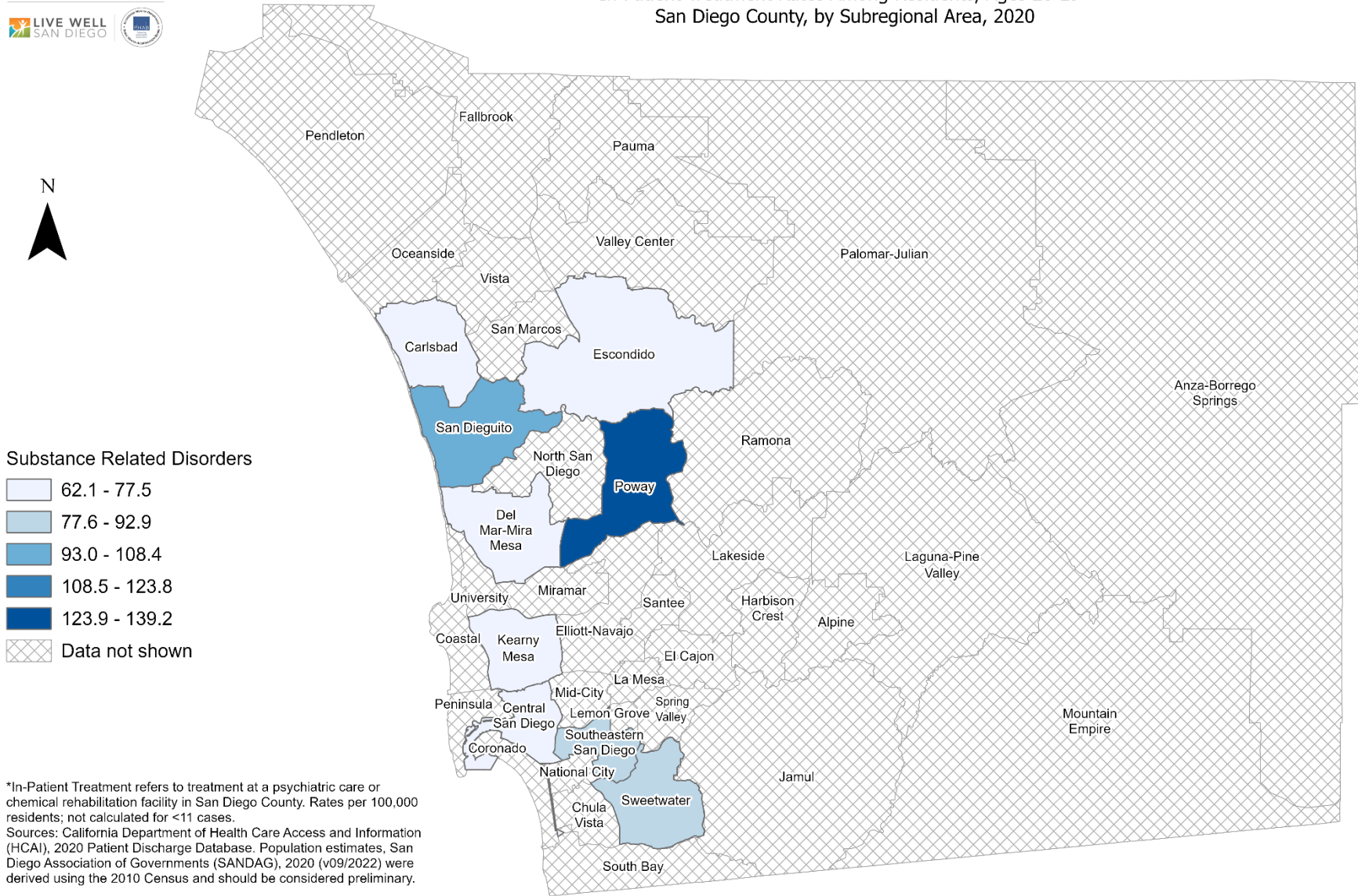


*In-Patient Treatment refers to treatment at a psychiatric care or chemical rehabilitation facility in San Diego County. Rates per 100,000 residents; not calculated for <11 cases.
Sources: California Department of Health Care Access and Information (HCAI), 2020 Patient Discharge Database. Population estimates, San Diego Association of Governments (SANDAG), 2020 (v09/2022) were derived using the 2010 Census and should be considered preliminary.

Maps & Analysis by County of San Diego, Health and Human Services Agency, Public Health Services, Community Health Statistics Unit.
Contact 619.692.6672. https://www.sandiegocounty.gov/hhsa/programs/phs/community_health_statistics/
March, 2023.
LiveWellSD.org.



In-Patient Treatment Rates Among Residents, Ages 20-29* San Diego County, by Subregional Area, 2020



Substance Related Disorders

- 62.1 - 77.5
- 77.6 - 92.9
- 93.0 - 108.4
- 108.5 - 123.8
- 123.9 - 139.2
- Data not shown

*In-Patient Treatment refers to treatment at a psychiatric care or chemical rehabilitation facility in San Diego County. Rates per 100,000 residents; not calculated for <11 cases.
Sources: California Department of Health Care Access and Information (HCAI), 2020 Patient Discharge Database. Population estimates, San Diego Association of Governments (SANDAG), 2020 (v09/2022) were derived using the 2010 Census and should be considered preliminary.

Maps & Analysis by County of San Diego, Health and Human Services Agency, Public Health Services, Community Health Statistics Unit.
Contact 619.692.6672. https://www.sandiegocounty.gov/hhsa/programs/phs/community_health_statistics/.
March, 2023.
LiveWellSD.org.

