



2021 MAP ATLAS

Brain Cancer

AUGUST 2023



County of San Diego | Health and Human
Services Agency | Public Health Services |
Community Health Statistics Unit



Data Sources

Death* is based on underlying cause of death among San Diego County residents. Rates calculated per 100,000 residents. Rates not calculated for < 11 cases. Maps not produced for conditions/outcomes with no SRA-level rates. Some sections may have no maps.

Sources: California Department of Public Health, Center for Health Statistics, Office of Health Information and Research, Vital Records Business Intelligence System (VRBIS), 2021. ***The COVID-19 pandemic was associated with increases in all-cause mortality. COVID-19 deaths have affected the patterns of mortality.*** SANDAG: San Diego Association of Governments (SANDAG) Population Estimates, 2021 (v09/2022). ***Population estimates for 2021 were derived using the 2010 Census and data should be considered preliminary.***

*For substance/drug overdoses, death rate is based on the multiple/contributing cause of death among San Diego County residents.

Hospitalization refers to treatment at a general acute care facility in San Diego County. Rates calculated per 100,000 residents. Rates not calculated for < 11 cases. Maps not produced for conditions/outcomes with no SRA-level rates. Some sections may have no maps.

Sources: California Department of Health Care Access and Information (HCAI), Patient Discharge Database, 2021. San Diego Association of Governments (SANDAG) Population Estimates, 2021 (v09/2022). ***Population estimates for 2021 were derived using the 2010 Census and data should be considered preliminary.***

Emergency Department (ED) Discharge refers to treatment at an ED facility in San Diego County.

Rates calculated per 100,000 residents. Rates not calculated for < 11 cases. Maps not produced for conditions/outcomes with no SRA-level rates. Some sections may have no maps.

Sources: California Department of Health Care Access and Information (HCAI), Emergency Department Discharge Database, 2021. San Diego Association of Governments (SANDAG) Population Estimates, 2021 (v09/2022). ***Population estimates for 2021 were derived using the 2010 Census and data should be considered preliminary.***

In-Patient Treatment (IPT) refers to treatment at a psychiatric care or chemical rehabilitation facility in San Diego County. Rates calculated per 100,000 residents. Rates not calculated for < 11 cases. Maps not produced for conditions/outcomes with no SRA-level rates. Some sections may have no maps.

Sources: California Department of Health Care Access and Information (HCAI), Patient Discharge Database, 2021. San Diego Association of Governments (SANDAG) Population Estimates, 2021 (v09/2022). ***Population estimates for 2021 were derived using the 2010 Census and data should be considered preliminary.***

Maps & Analysis by County of San Diego, Health and Human Services Agency, Public Health Services, Community Health Statistics Unit. Contact 619.692.6672. August 2023.

https://www.sandiegocounty.gov/hhsa/programs/phs/community_health_statistics/
LiveWellSD.org.

For more detailed explanation of geography, methods, and sources, please refer to CHSU's [2020 Community Profiles Data Guide and Data Dictionary Dashboards](#).

Table of Contents

Section 1: Deaths	1
Section 2: Hospitalizations	3
Section 3: Emergency Department (ED) Discharges	6
Section 4: In-Patient Treatments (IPT).....	8

SECTION 1



Death Rates Among San Diego County Residents by Demographics, 2021:

- Total Rate
 - Race/Ethnicity
 - Asian/Pacific Islander (API)
 - Black
 - Hispanic
 - White
 - Age Group
 - 0-9 Years
 - 10-19 Years
 - 20-29 Years
 - 30-39 Years
 - 40-49 Years
 - 50-59 Years
 - 60-69 Years
 - 70-79 Years
 - 80+ Years

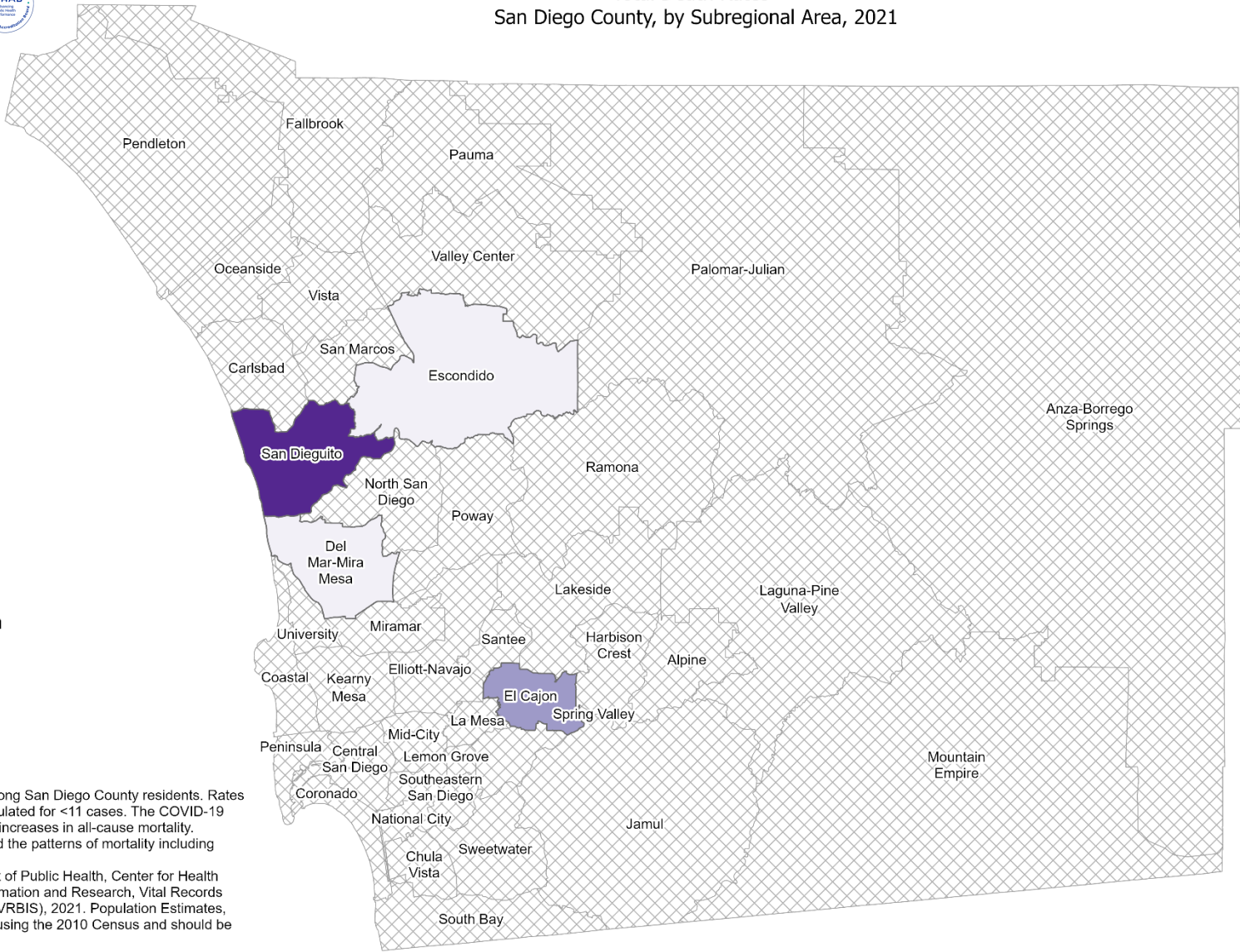




Total Death Rates* San Diego County, by Subregional Area, 2021

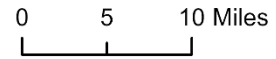


Brain Cancer



*Underlying cause of death among San Diego County residents. Rates per 100,000 residents; not calculated for <11 cases. The COVID-19 pandemic was associated with increases in all-cause mortality. COVID-19 deaths have affected the patterns of mortality including death rates.
 Sources: California Department of Public Health, Center for Health Statistics, Office of Health Information and Research, Vital Records Business Intelligence System (VRBIS), 2021. Population Estimates, 2021 (v09/2022) were derived using the 2010 Census and should be considered preliminary.

Maps & Analysis by County of San Diego, Health and Human Services Agency, Public Health Services, Community Health Statistics Unit.
 Contact 619.692.6672.
https://www.sandiegocounty.gov/hhsa/programs/phs/community_health_statistics/
 August, 2023.
 LiveWellSD.org.



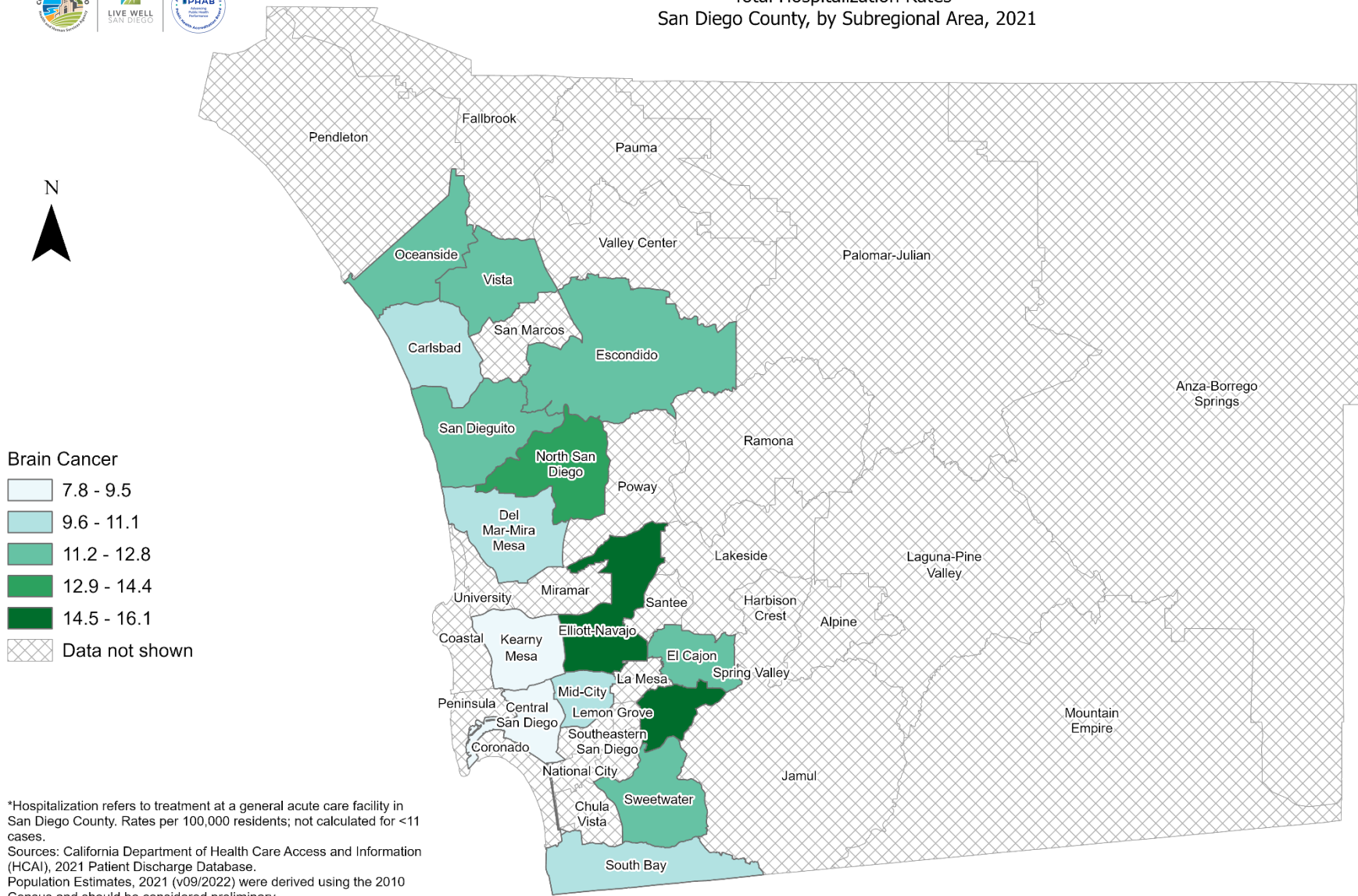
SECTION 2

Hospitalization Rates Among San Diego County Residents by Demographics, 2021:

- ● ● ● ●
 - Total Rate
 - Race/Ethnicity
 - Asian/Pacific Islander (API)
 - Black
 - Hispanic
 - White
 - Age Group
 - 0-9 Years
 - 10-19 Years
 - 20-29 Years
 - 30-39 Years
 - 40-49 Years
 - 50-59 Years
 - 60-69 Years
 - 70-79 Years
 - 80+ Years

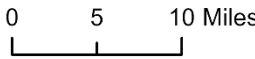


Total Hospitalization Rates* San Diego County, by Subregional Area, 2021



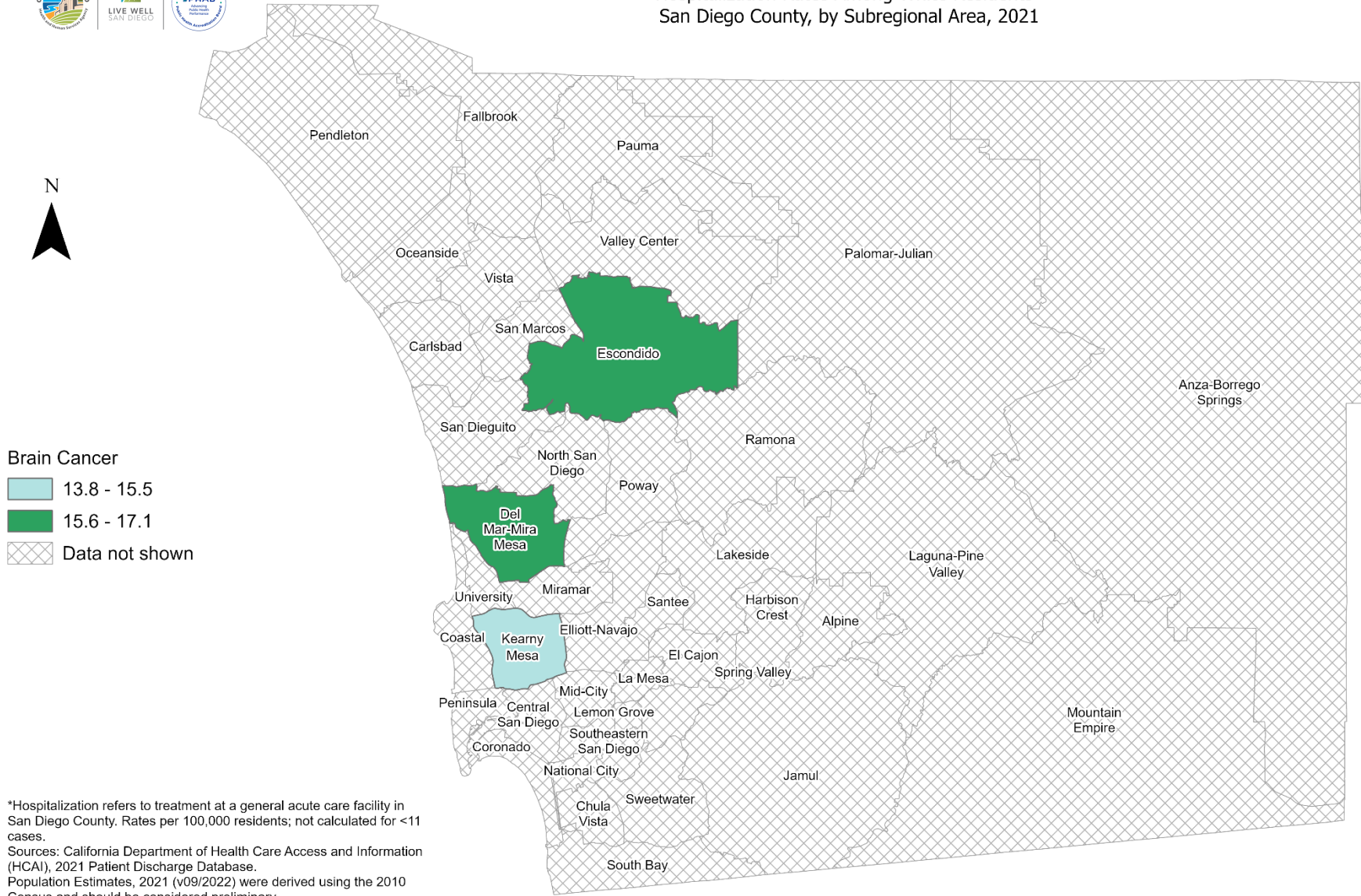
*Hospitalization refers to treatment at a general acute care facility in San Diego County. Rates per 100,000 residents; not calculated for <11 cases.
Sources: California Department of Health Care Access and Information (HCAI), 2021 Patient Discharge Database.
Population Estimates, 2021 (v09/2022) were derived using the 2010 Census and should be considered preliminary.

Maps & Analysis by County of San Diego, Health and Human Services Agency, Public Health Services, Community Health Statistics Unit.
Contact 619.692.6672. https://www.sandiegocounty.gov/hhsa/programs/phs/community_health_statistics/.
August, 2023.
LiveWellSD.org.



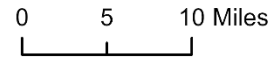


Hospitalization Rates Among White Residents* San Diego County, by Subregional Area, 2021



Brain Cancer

- 13.8 - 15.5
- 15.6 - 17.1
- Data not shown



*Hospitalization refers to treatment at a general acute care facility in San Diego County. Rates per 100,000 residents; not calculated for <11 cases.
Sources: California Department of Health Care Access and Information (HCAI), 2021 Patient Discharge Database.
Population Estimates, 2021 (v09/2022) were derived using the 2010 Census and should be considered preliminary.

Maps & Analysis by County of San Diego, Health and Human Services Agency, Public Health Services, Community Health Statistics Unit.
Contact 619.692.6672. https://www.sandiegocounty.gov/hhsa/programs/phs/community_health_statistics/.
August, 2023.
LiveWellSD.org.



SECTION 3

Emergency Department (ED) Rates Among San Diego County Residents by Demographics, 2021:

- Total Rate
 - Race/Ethnicity
 - Asian/Pacific Islander (API)
 - Black
 - Hispanic
 - White
 - Age Group
 - 0-9 Years
 - 10-19 Years
 - 20-29 Years
 - 30-39 Years
 - 40-49 Years
 - 50-59 Years
 - 60-69 Years
 - 70-79 Years
 - 80+ Years

**No SRA-level rate data
available for this section.**

SECTION 4



In-Patient Treatment (IPT) Rates Among San Diego County Residents by Demographics, 2021:

- Total Rate
 - Race/Ethnicity
 - Asian/Pacific Islander (API)
 - Black
 - Hispanic
 - White
 - Age Group
 - 0-9 Years
 - 10-19 Years
 - 20-29 Years
 - 30-39 Years
 - 40-49 Years
 - 50-59 Years
 - 60-69 Years
 - 70-79 Years
 - 80+ Years



**No SRA-level rate data
available for this section.**