



# 2021 MAP ATLAS

## Hip Fractures

---

AUGUST 2023



County of San Diego | Health and Human Services Agency | Public Health Services | Community Health Statistics Unit



## Data Sources

**Death\*** is based on underlying cause of death among San Diego County residents. Rates calculated per 100,000 residents. Rates not calculated for < 11 cases. Maps not produced for conditions/outcomes with no SRA-level rates. Some sections may have no maps.

Sources: California Department of Public Health, Center for Health Statistics, Office of Health Information and Research, Vital Records Business Intelligence System (VRBIS), 2021. ***The COVID-19 pandemic was associated with increases in all-cause mortality. COVID-19 deaths have affected the patterns of mortality.*** SANDAG: San Diego Association of Governments (SANDAG) Population Estimates, 2021 (v09/2022). ***Population estimates for 2021 were derived using the 2010 Census and data should be considered preliminary.***

\*For substance/drug overdoses, death rate is based on the multiple/contributing cause of death among San Diego County residents.

**Hospitalization** refers to treatment at a general acute care facility in San Diego County. Rates calculated per 100,000 residents. Rates not calculated for < 11 cases. Maps not produced for conditions/outcomes with no SRA-level rates. Some sections may have no maps.

Sources: California Department of Health Care Access and Information (HCAI), Patient Discharge Database, 2021. San Diego Association of Governments (SANDAG) Population Estimates, 2021 (v09/2022). ***Population estimates for 2021 were derived using the 2010 Census and data should be considered preliminary.***

**Emergency Department (ED) Discharge** refers to treatment at an ED facility in San Diego County.

Rates calculated per 100,000 residents. Rates not calculated for < 11 cases. Maps not produced for conditions/outcomes with no SRA-level rates. Some sections may have no maps.

Sources: California Department of Health Care Access and Information (HCAI), Emergency Department Discharge Database, 2021. San Diego Association of Governments (SANDAG) Population Estimates, 2021 (v09/2022). ***Population estimates for 2021 were derived using the 2010 Census and data should be considered preliminary.***

**In-Patient Treatment (IPT)** refers to treatment at a psychiatric care or chemical rehabilitation facility in San Diego County. Rates calculated per 100,000 residents. Rates not calculated for < 11 cases. Maps not produced for conditions/outcomes with no SRA-level rates. Some sections may have no maps.

Sources: California Department of Health Care Access and Information (HCAI), Patient Discharge Database, 2021. San Diego Association of Governments (SANDAG) Population Estimates, 2021 (v09/2022). ***Population estimates for 2021 were derived using the 2010 Census and data should be considered preliminary.***

Maps & Analysis by County of San Diego, Health and Human Services Agency, Public Health Services, Community Health Statistics Unit. Contact 619.692.6672. August 2023.

[https://www.sandiegocounty.gov/hhsa/programs/phs/community\\_health\\_statistics/LiveWellSD.org](https://www.sandiegocounty.gov/hhsa/programs/phs/community_health_statistics/LiveWellSD.org).

For more detailed explanation of geography, methods, and sources, please refer to CHSU's [2020 Community Profiles Data Guide and Data Dictionary Dashboards](#).

# Table of Contents

Section 1: Deaths .....	1
Section 2: Hospitalizations .....	3
Section 3: Emergency Department (ED) Discharges .....	10
Section 4: In-Patient Treatments (IPT).....	14

# SECTION 1



## Death Rates Among San Diego County Residents by Demographics, 2021:

- Total Rate
  - Race/Ethnicity
    - Asian/Pacific Islander (API)
    - Black
    - Hispanic
    - White
  - Age Group
    - 0-9 Years
    - 10-19 Years
    - 20-29 Years
    - 30-39 Years
    - 40-49 Years
    - 50-59 Years
    - 60-69 Years
    - 70-79 Years
    - 80+ Years

- 
- 
- 
- 
-

**No SRA-level rate data  
available for this section.**

# SECTION 2

## Hospitalization Rates Among San Diego County Residents by Demographics, 2021:

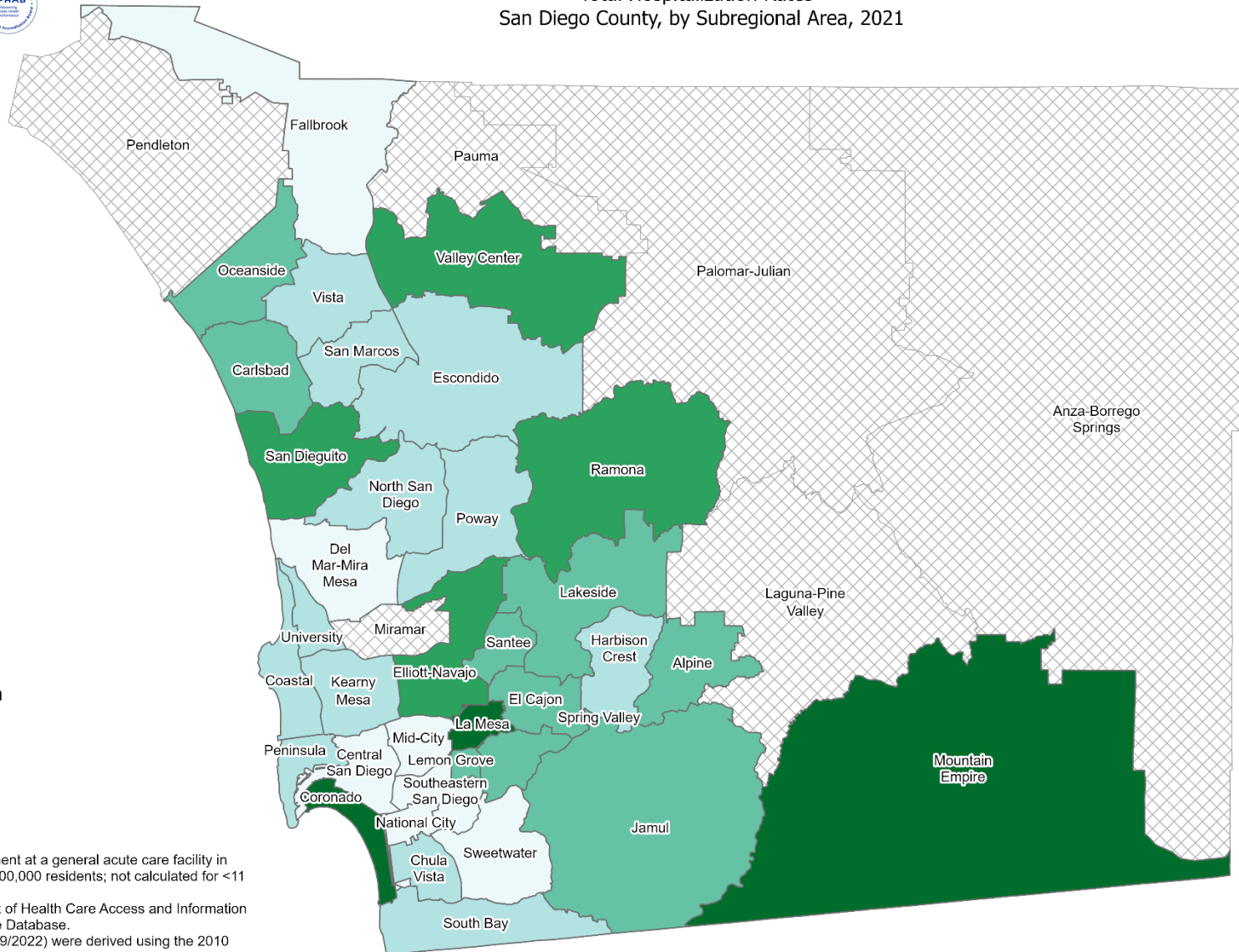
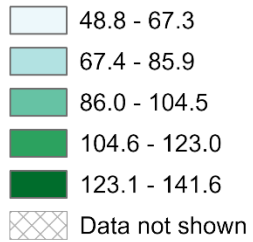
- Total Rate
  - Race/Ethnicity
    - Asian/Pacific Islander (API)
    - Black
    - Hispanic
    - White
  - Age Group
    - 0-9 Years
    - 10-19 Years
    - 20-29 Years
    - 30-39 Years
    - 40-49 Years
    - 50-59 Years
    - 60-69 Years
    - 70-79 Years
    - 80+ Years



## Total Hospitalization Rates\* San Diego County, by Subregional Area, 2021



### Hip Fractures



\*Hospitalization refers to treatment at a general acute care facility in San Diego County. Rates per 100,000 residents; not calculated for <11 cases.  
Sources: California Department of Health Care Access and Information (HCAI), 2021 Patient Discharge Database.  
Population Estimates, 2021 (v09/2022) were derived using the 2010 Census and should be considered preliminary.

Maps & Analysis by County of San Diego, Health and Human Services Agency, Public Health Services, Community Health Statistics Unit.  
Contact 619.692.6672. [https://www.sandiegocounty.gov/hhsa/programs/phs/community\\_health\\_statistics/](https://www.sandiegocounty.gov/hhsa/programs/phs/community_health_statistics/).  
August, 2023.  
[LiveWellSD.org](http://LiveWellSD.org).

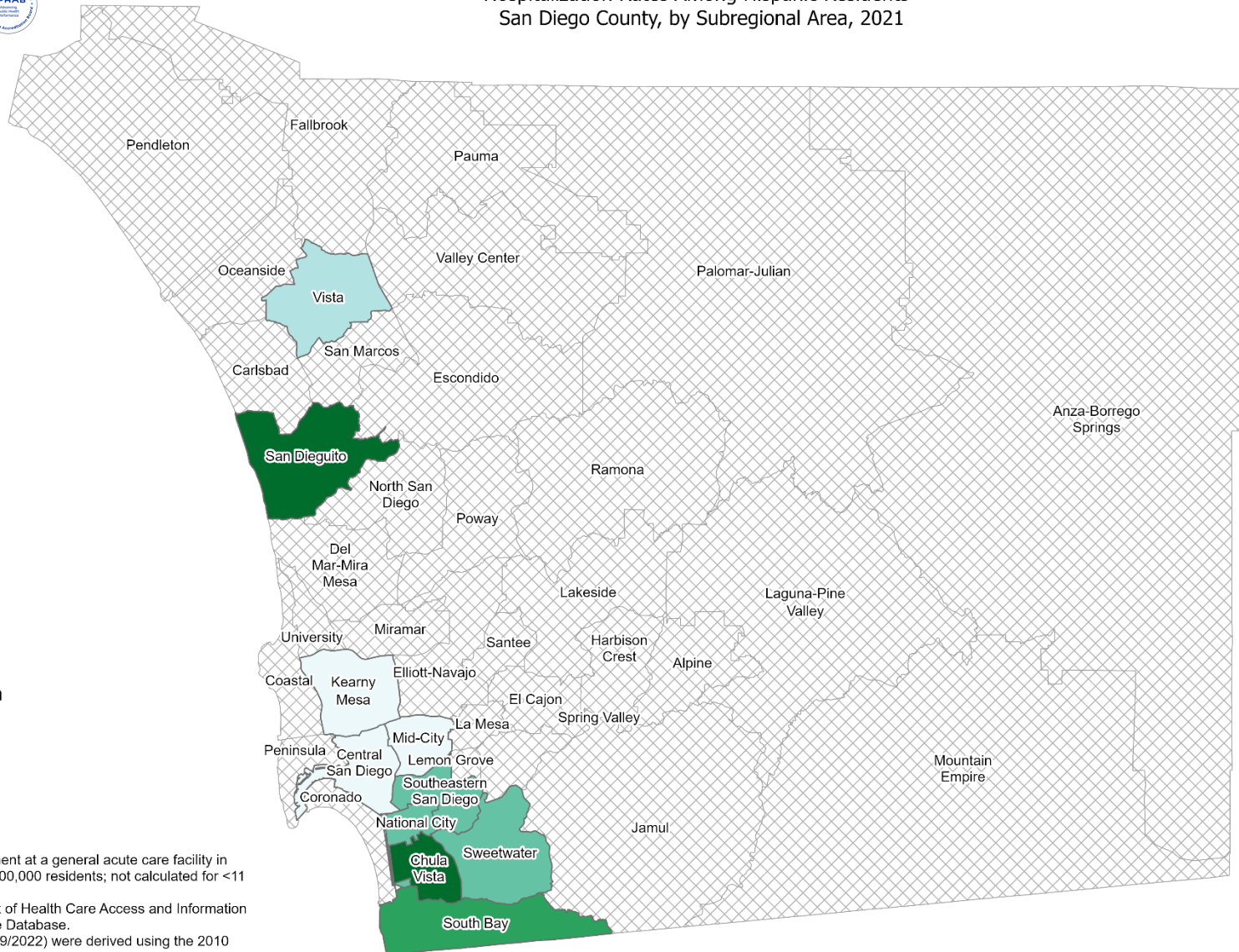
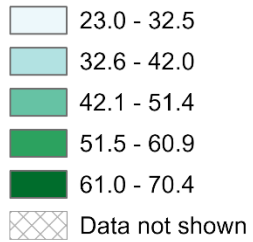




### Hospitalization Rates Among Hispanic Residents\* San Diego County, by Subregional Area, 2021



#### Hip Fractures



\*Hospitalization refers to treatment at a general acute care facility in San Diego County. Rates per 100,000 residents; not calculated for <11 cases.  
Sources: California Department of Health Care Access and Information (HCAI), 2021 Patient Discharge Database.  
Population Estimates, 2021 (v09/2022) were derived using the 2010 Census and should be considered preliminary.

Maps & Analysis by County of San Diego, Health and Human Services Agency, Public Health Services, Community Health Statistics Unit.  
Contact 619.692.6672. [https://www.sandiegocounty.gov/hhsa/programs/phs/community\\_health\\_statistics/](https://www.sandiegocounty.gov/hhsa/programs/phs/community_health_statistics/).  
August, 2023.  
LiveWellSD.org.



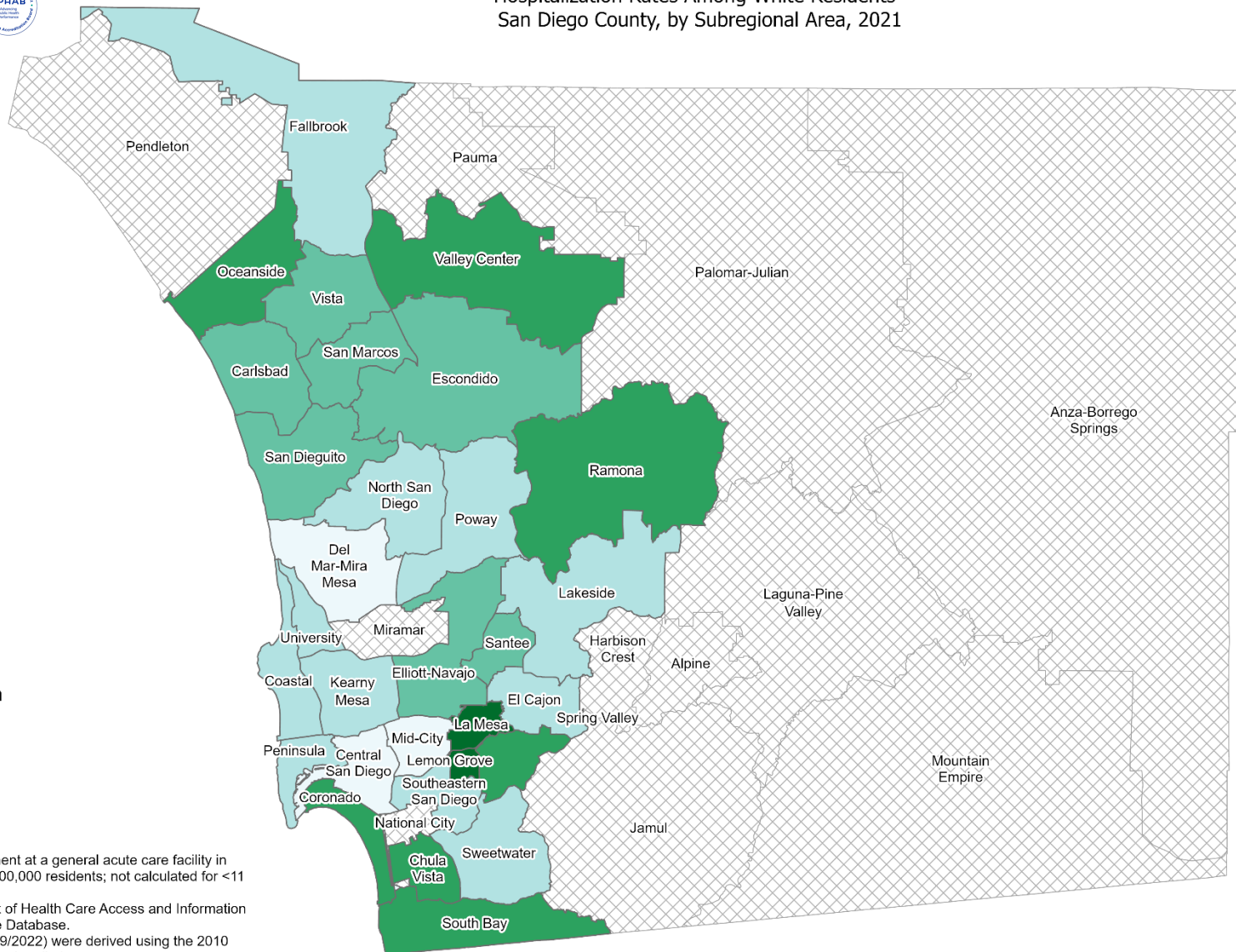
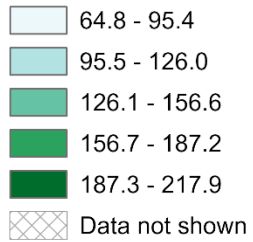




### Hospitalization Rates Among White Residents\* San Diego County, by Subregional Area, 2021

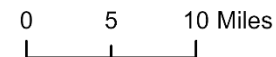


#### Hip Fractures



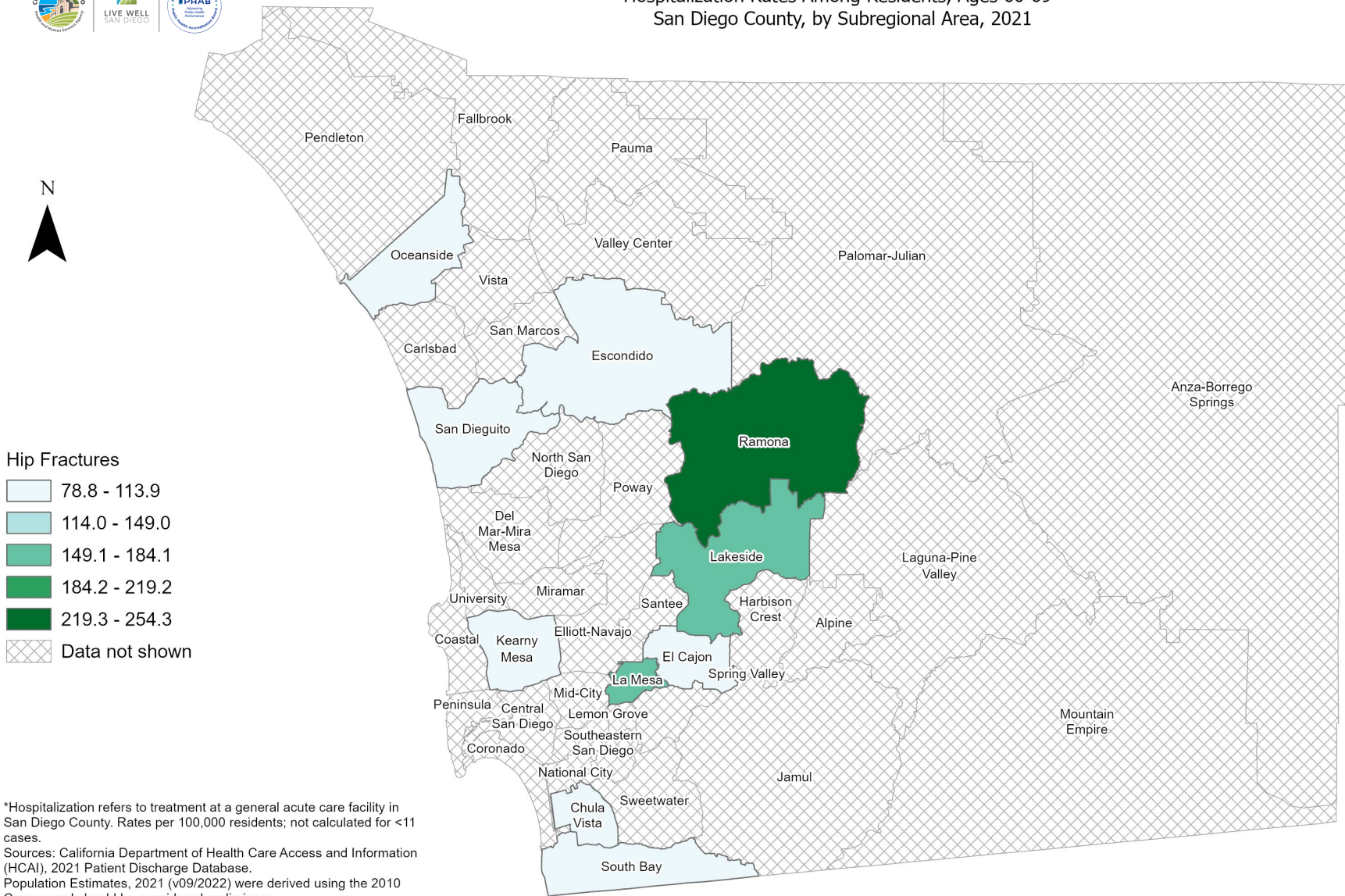
\*Hospitalization refers to treatment at a general acute care facility in San Diego County. Rates per 100,000 residents; not calculated for <11 cases.  
Sources: California Department of Health Care Access and Information (HCAI), 2021 Patient Discharge Database.  
Population Estimates, 2021 (v09/2022) were derived using the 2010 Census and should be considered preliminary.

Maps & Analysis by County of San Diego, Health and Human Services Agency, Public Health Services, Community Health Statistics Unit.  
Contact 619.692.6672. [https://www.sandiegocounty.gov/hhsa/programs/phs/community\\_health\\_statistics/](https://www.sandiegocounty.gov/hhsa/programs/phs/community_health_statistics/).  
August, 2023.  
LiveWellSD.org.





### Hospitalization Rates Among Residents, Ages 60-69\* San Diego County, by Subregional Area, 2021



**Hip Fractures**

- 78.8 - 113.9
- 114.0 - 149.0
- 149.1 - 184.1
- 184.2 - 219.2
- 219.3 - 254.3
- Data not shown

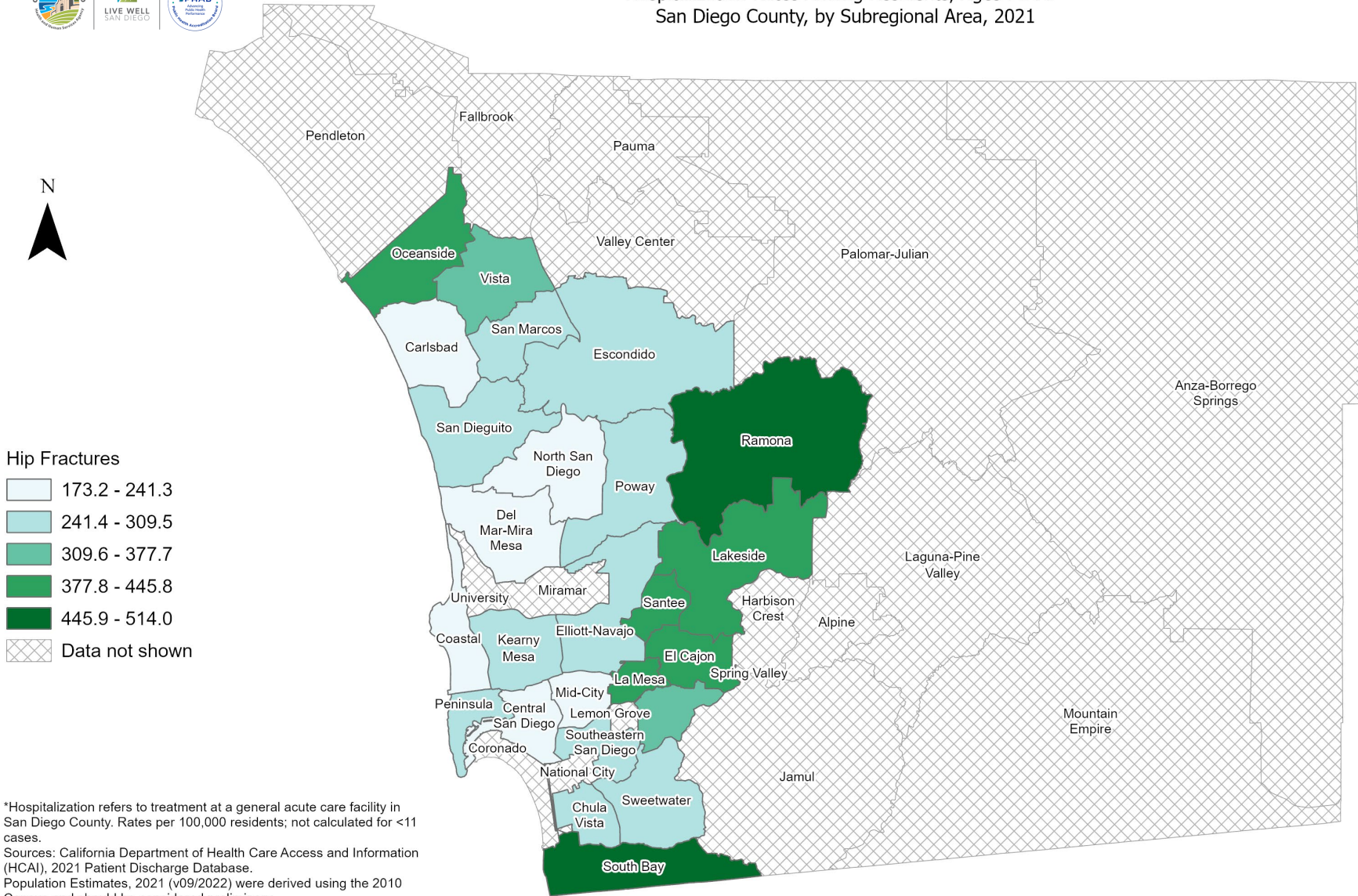
\*Hospitalization refers to treatment at a general acute care facility in San Diego County. Rates per 100,000 residents; not calculated for <11 cases.  
Sources: California Department of Health Care Access and Information (HCAI), 2021 Patient Discharge Database, Population Estimates, 2021 (v09/2022) were derived using the 2010 Census and should be considered preliminary.

Maps & Analysis by County of San Diego, Health and Human Services Agency, Public Health Services, Community Health Statistics Unit. Contact 619.692.6672. [https://www.sandiegocounty.gov/hhsa/programs/phs/community\\_health\\_statistics/](https://www.sandiegocounty.gov/hhsa/programs/phs/community_health_statistics/), August, 2023. LiveWellSD.org.





### Hospitalization Rates Among Residents, Ages 70-79\* San Diego County, by Subregional Area, 2021

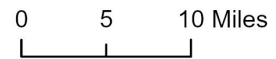


**Hip Fractures**

- 173.2 - 241.3
- 241.4 - 309.5
- 309.6 - 377.7
- 377.8 - 445.8
- 445.9 - 514.0
- Data not shown

\*Hospitalization refers to treatment at a general acute care facility in San Diego County. Rates per 100,000 residents; not calculated for <11 cases.  
Sources: California Department of Health Care Access and Information (HCAI), 2021 Patient Discharge Database, Population Estimates, 2021 (v09/2022) were derived using the 2010 Census and should be considered preliminary.

Maps & Analysis by County of San Diego, Health and Human Services Agency, Public Health Services, Community Health Statistics Unit. Contact 619.692.6672. [https://www.sandiegocounty.gov/hhsa/programs/phs/community\\_health\\_statistics/](https://www.sandiegocounty.gov/hhsa/programs/phs/community_health_statistics/), August, 2023. LiveWellSD.org.



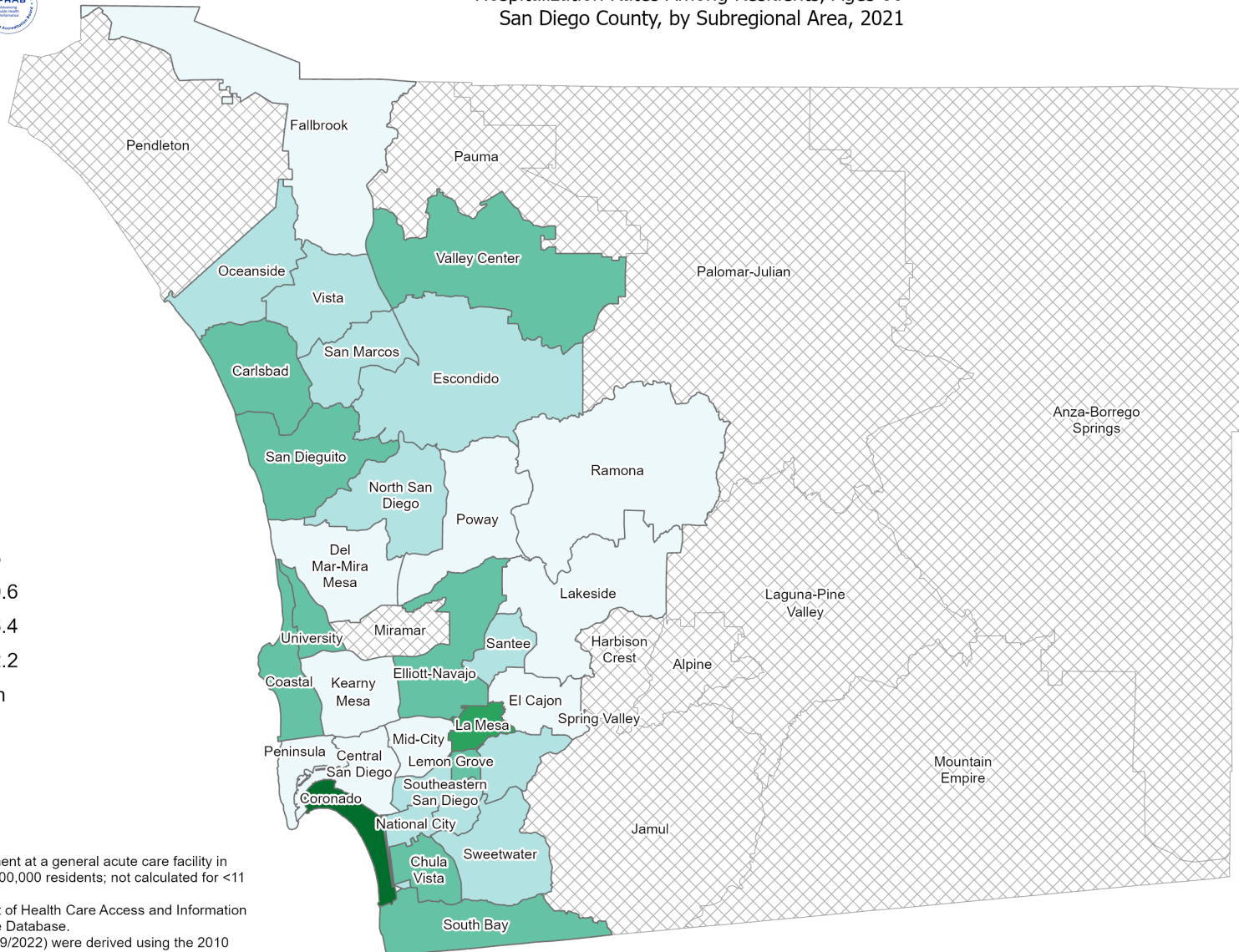


### Hospitalization Rates Among Residents, Ages 80+\* San Diego County, by Subregional Area, 2021



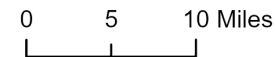
#### Hip Fractures

- 663.2 - 959.0
- 959.1 - 1,254.8
- 1,254.9 - 1,550.6
- 1,550.7 - 1,846.4
- 1,846.5 - 2,142.2
- Data not shown

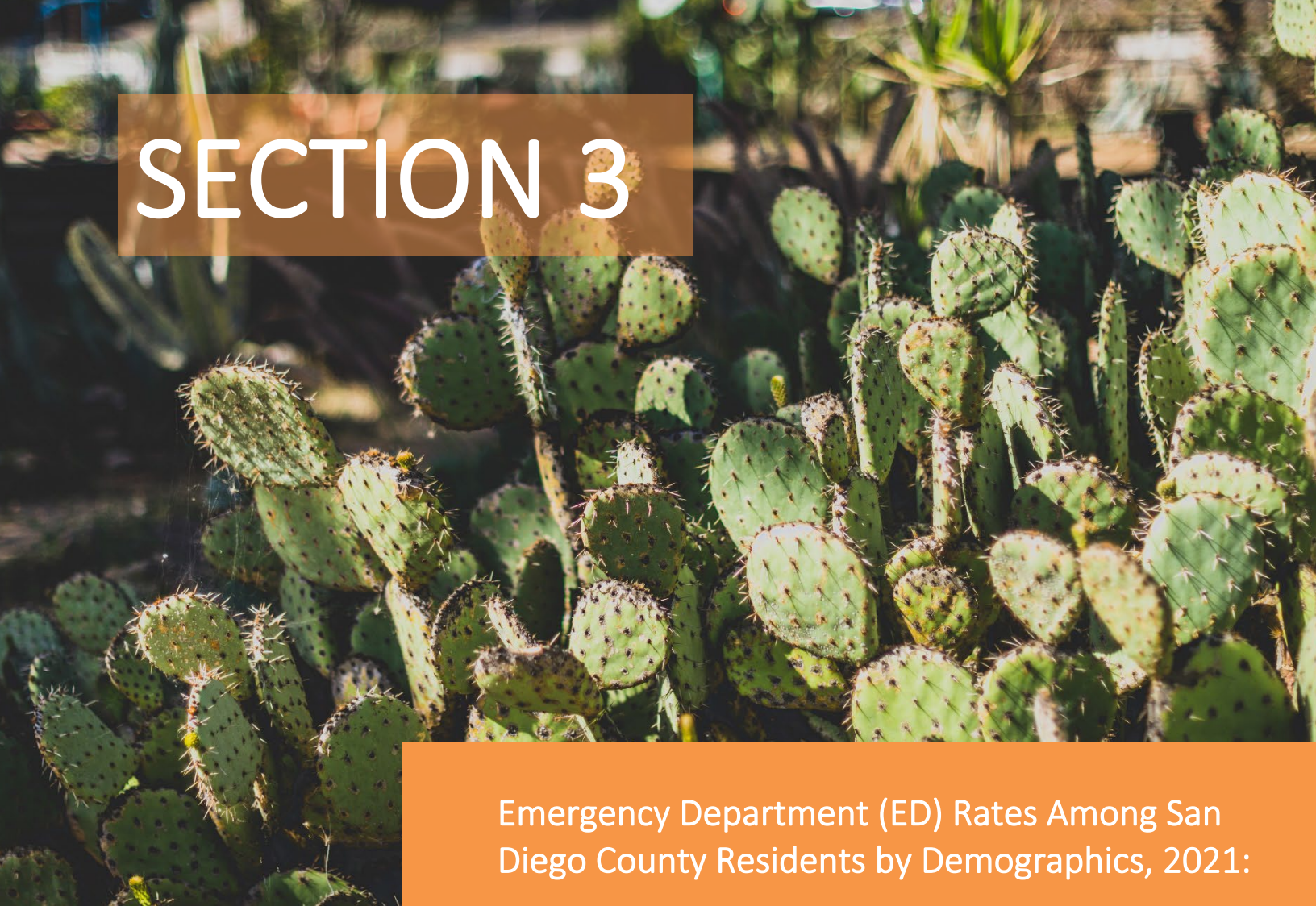


\*Hospitalization refers to treatment at a general acute care facility in San Diego County. Rates per 100,000 residents; not calculated for <11 cases.  
Sources: California Department of Health Care Access and Information (HCAI), 2021 Patient Discharge Database, Population Estimates, 2021 (v09/2022) were derived using the 2010 Census and should be considered preliminary.

Maps & Analysis by County of San Diego, Health and Human Services Agency, Public Health Services, Community Health Statistics Unit. Contact 619.692.6672. [https://www.sandiegocounty.gov/hhsa/programs/phs/community\\_health\\_statistics/](https://www.sandiegocounty.gov/hhsa/programs/phs/community_health_statistics/). August, 2023. LiveWellSD.org.



# SECTION 3



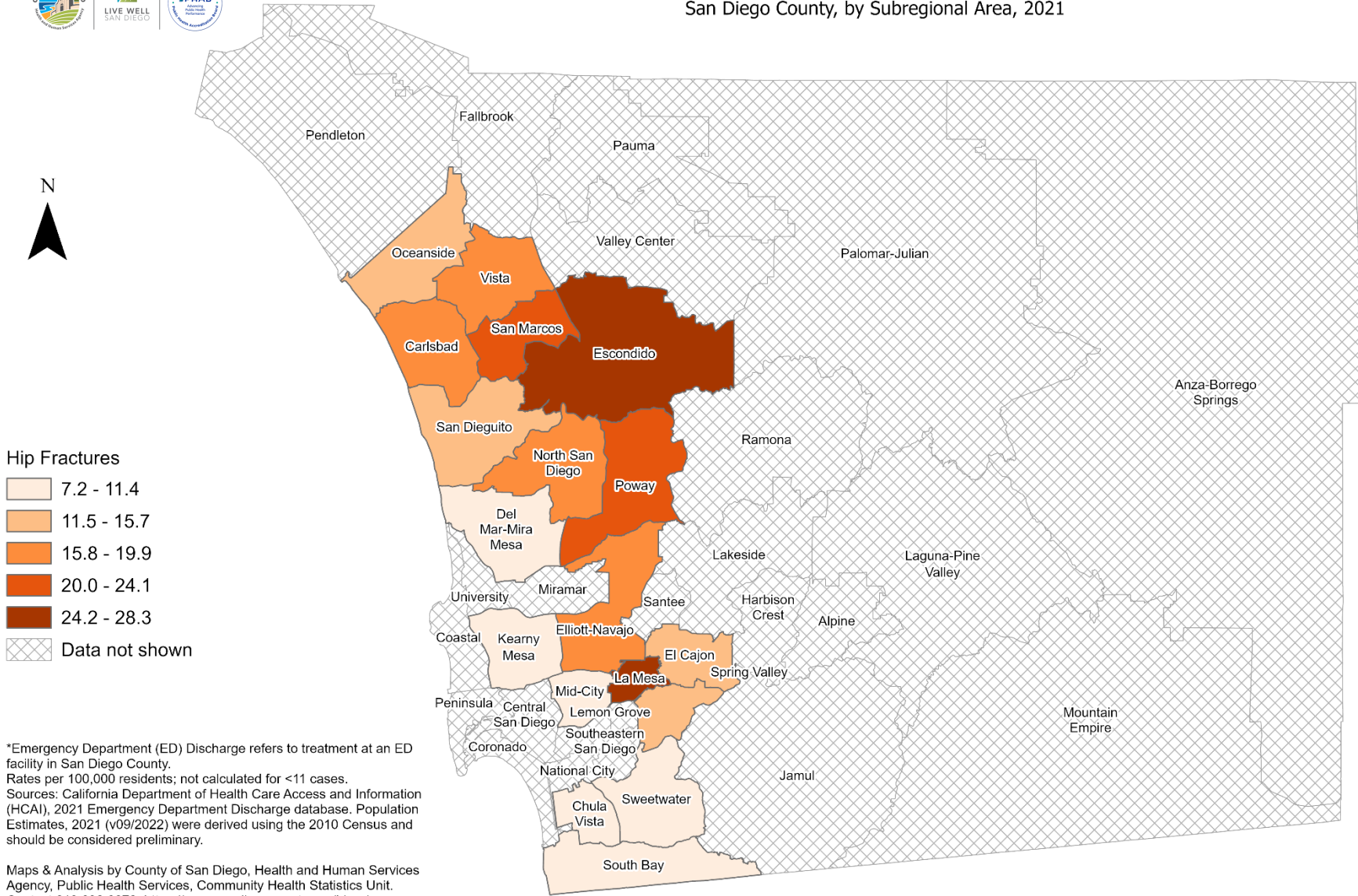
## Emergency Department (ED) Rates Among San Diego County Residents by Demographics, 2021:

- Total Rate
  - Race/Ethnicity
    - Asian/Pacific Islander (API)
    - Black
    - Hispanic
    - White
  - Age Group
    - 0-9 Years
    - 10-19 Years
    - 20-29 Years
    - 30-39 Years
    - 40-49 Years
    - 50-59 Years
    - 60-69 Years
    - 70-79 Years
    - 80+ Years





### Total Emergency Department Discharge Rates\* San Diego County, by Subregional Area, 2021



#### Hip Fractures

- 7.2 - 11.4
- 11.5 - 15.7
- 15.8 - 19.9
- 20.0 - 24.1
- 24.2 - 28.3
- Data not shown

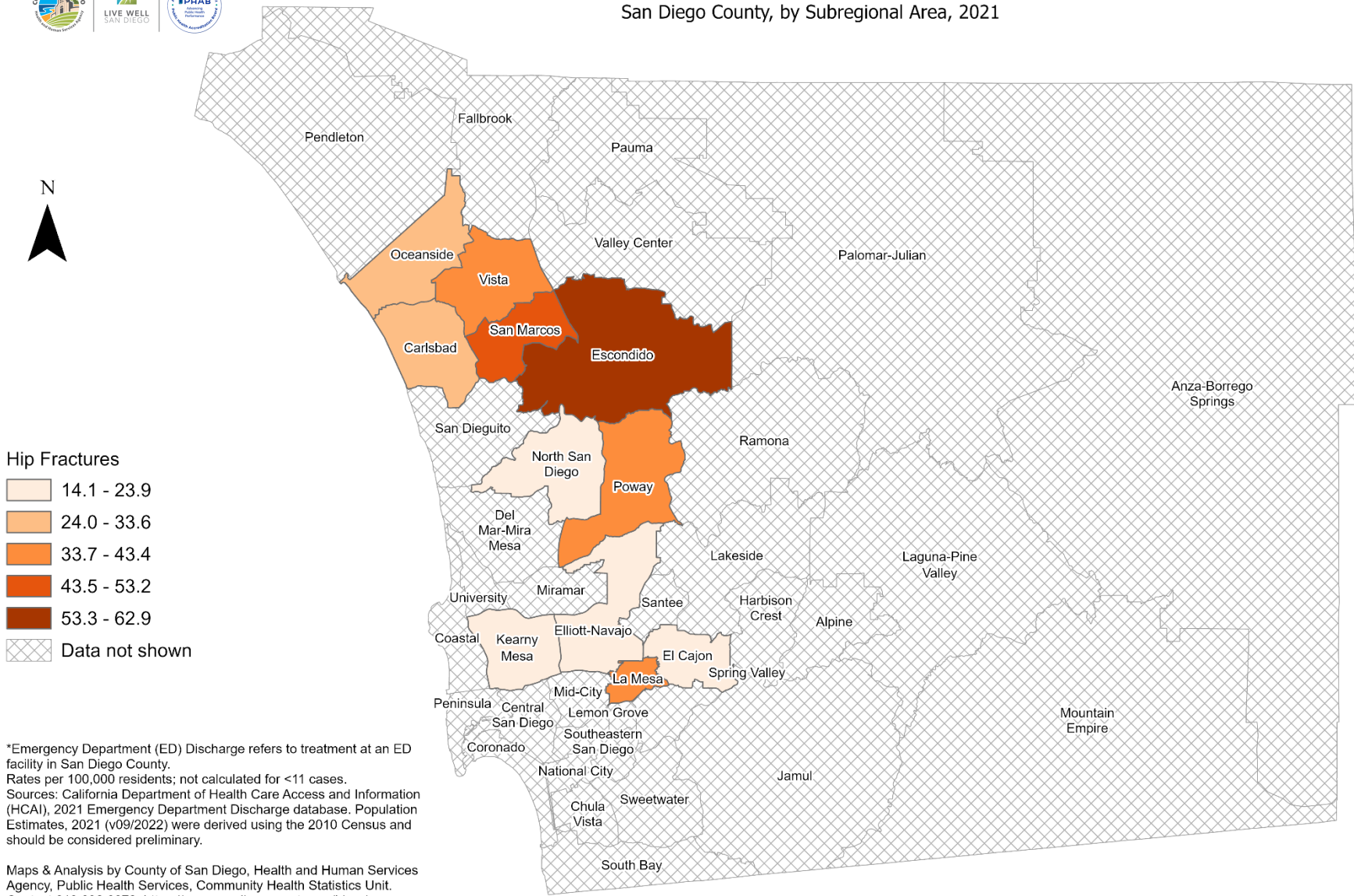
\*Emergency Department (ED) Discharge refers to treatment at an ED facility in San Diego County.  
 Rates per 100,000 residents; not calculated for <11 cases.  
 Sources: California Department of Health Care Access and Information (HCAI), 2021 Emergency Department Discharge database. Population Estimates, 2021 (v09/2022) were derived using the 2010 Census and should be considered preliminary.

Maps & Analysis by County of San Diego, Health and Human Services Agency, Public Health Services, Community Health Statistics Unit.  
 Contact 619.692.6672. [https://www.sandiegocounty.gov/hhsa/programs/phs/community\\_health\\_statistics/](https://www.sandiegocounty.gov/hhsa/programs/phs/community_health_statistics/).  
 August, 2023.  
 LiveWellSD.org.



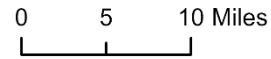


### Emergency Department Discharge Rates Among White Residents\* San Diego County, by Subregional Area, 2021



\*Emergency Department (ED) Discharge refers to treatment at an ED facility in San Diego County.  
 Rates per 100,000 residents; not calculated for <11 cases.  
 Sources: California Department of Health Care Access and Information (HCAI), 2021 Emergency Department Discharge database. Population Estimates, 2021 (v09/2022) were derived using the 2010 Census and should be considered preliminary.

Maps & Analysis by County of San Diego, Health and Human Services Agency, Public Health Services, Community Health Statistics Unit.  
 Contact 619.692.6672. [https://www.sandiegocounty.gov/hhsa/programs/phs/community\\_health\\_statistics/](https://www.sandiegocounty.gov/hhsa/programs/phs/community_health_statistics/).  
 August, 2023.  
 LiveWellSD.org.

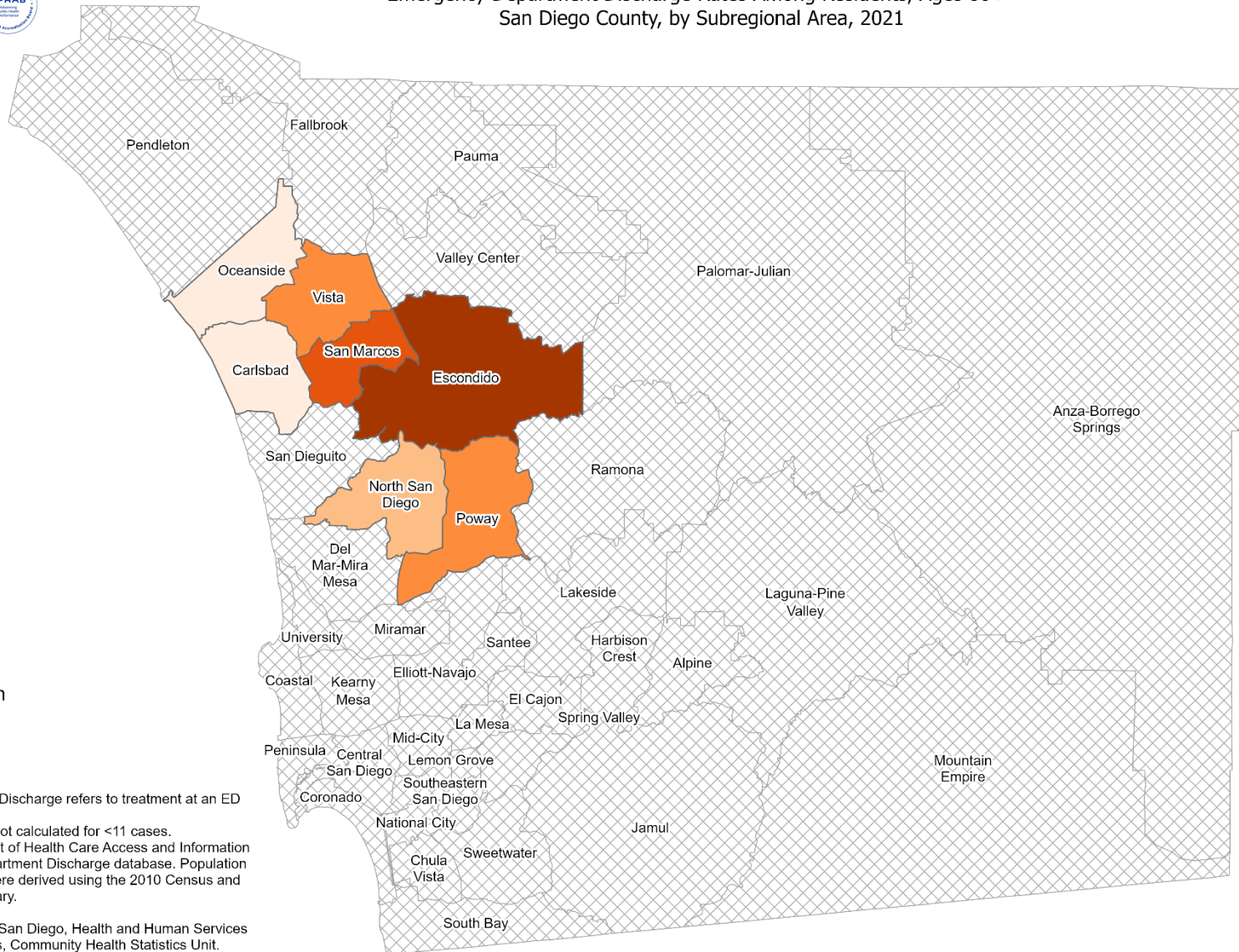
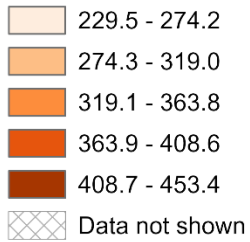




### Emergency Department Discharge Rates Among Residents, Ages 80+\* San Diego County, by Subregional Area, 2021

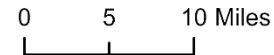


#### Hip Fractures



\*Emergency Department (ED) Discharge refers to treatment at an ED facility in San Diego County.  
Rates per 100,000 residents; not calculated for <11 cases.  
Sources: California Department of Health Care Access and Information (HCAI), 2021 Emergency Department Discharge database. Population Estimates, 2021 (v09/2022) were derived using the 2010 Census and should be considered preliminary.

Maps & Analysis by County of San Diego, Health and Human Services Agency, Public Health Services, Community Health Statistics Unit.  
Contact 619.692.6672. [https://www.sandiegocounty.gov/hhsa/programs/phs/community\\_health\\_statistics/](https://www.sandiegocounty.gov/hhsa/programs/phs/community_health_statistics/).  
August, 2023.  
LiveWellSD.org.





# SECTION 4



## In-Patient Treatment (IPT) Rates Among San Diego County Residents by Demographics, 2021:

- 
- 
- 
- 
- 

- Total Rate
  - Race/Ethnicity
    - Asian/Pacific Islander (API)
    - Black
    - Hispanic
    - White
  - Age Group
    - 0-9 Years
    - 10-19 Years
    - 20-29 Years
    - 30-39 Years
    - 40-49 Years
    - 50-59 Years
    - 60-69 Years
    - 70-79 Years
    - 80+ Years

**No SRA-level rate data  
available for this section.**