



# 2021 MAP ATLAS

## Motor Vehicle Injuries

---

AUGUST 2023



County of San Diego | Health and Human Services Agency | Public Health Services | Community Health Statistics Unit



## Data Sources

**Death\*** is based on underlying cause of death among San Diego County residents. Rates calculated per 100,000 residents. Rates not calculated for < 11 cases. Maps not produced for conditions/outcomes with no SRA-level rates. Some sections may have no maps.

Sources: California Department of Public Health, Center for Health Statistics, Office of Health Information and Research, Vital Records Business Intelligence System (VRBIS), 2021. ***The COVID-19 pandemic was associated with increases in all-cause mortality. COVID-19 deaths have affected the patterns of mortality.*** SANDAG: San Diego Association of Governments (SANDAG) Population Estimates, 2021 (v09/2022). ***Population estimates for 2021 were derived using the 2010 Census and data should be considered preliminary.***

\*For substance/drug overdoses, death rate is based on the multiple/contributing cause of death among San Diego County residents.

**Hospitalization** refers to treatment at a general acute care facility in San Diego County. Rates calculated per 100,000 residents. Rates not calculated for < 11 cases. Maps not produced for conditions/outcomes with no SRA-level rates. Some sections may have no maps.

Sources: California Department of Health Care Access and Information (HCAI), Patient Discharge Database, 2021. San Diego Association of Governments (SANDAG) Population Estimates, 2021 (v09/2022). ***Population estimates for 2021 were derived using the 2010 Census and data should be considered preliminary.***

**Emergency Department (ED) Discharge** refers to treatment at an ED facility in San Diego County.

Rates calculated per 100,000 residents. Rates not calculated for < 11 cases. Maps not produced for conditions/outcomes with no SRA-level rates. Some sections may have no maps.

Sources: California Department of Health Care Access and Information (HCAI), Emergency Department Discharge Database, 2021. San Diego Association of Governments (SANDAG) Population Estimates, 2021 (v09/2022). ***Population estimates for 2021 were derived using the 2010 Census and data should be considered preliminary.***

**In-Patient Treatment (IPT)** refers to treatment at a psychiatric care or chemical rehabilitation facility in San Diego County. Rates calculated per 100,000 residents. Rates not calculated for < 11 cases. Maps not produced for conditions/outcomes with no SRA-level rates. Some sections may have no maps.

Sources: California Department of Health Care Access and Information (HCAI), Patient Discharge Database, 2021. San Diego Association of Governments (SANDAG) Population Estimates, 2021 (v09/2022). ***Population estimates for 2021 were derived using the 2010 Census and data should be considered preliminary.***

Maps & Analysis by County of San Diego, Health and Human Services Agency, Public Health Services, Community Health Statistics Unit. Contact 619.692.6672. August 2023.

[https://www.sandiegocounty.gov/hhsa/programs/phs/community\\_health\\_statistics/](https://www.sandiegocounty.gov/hhsa/programs/phs/community_health_statistics/)  
LiveWellSD.org.

For more detailed explanation of geography, methods, and sources, please refer to CHSU's [2020 Community Profiles Data Guide and Data Dictionary Dashboards](#).

# Table of Contents

Section 1: Deaths .....	1
Section 2: Hospitalizations .....	4
Section 3: Emergency Department (ED) Discharges .....	17
Section 4: In-Patient Treatments (IPT).....	32

# SECTION 1



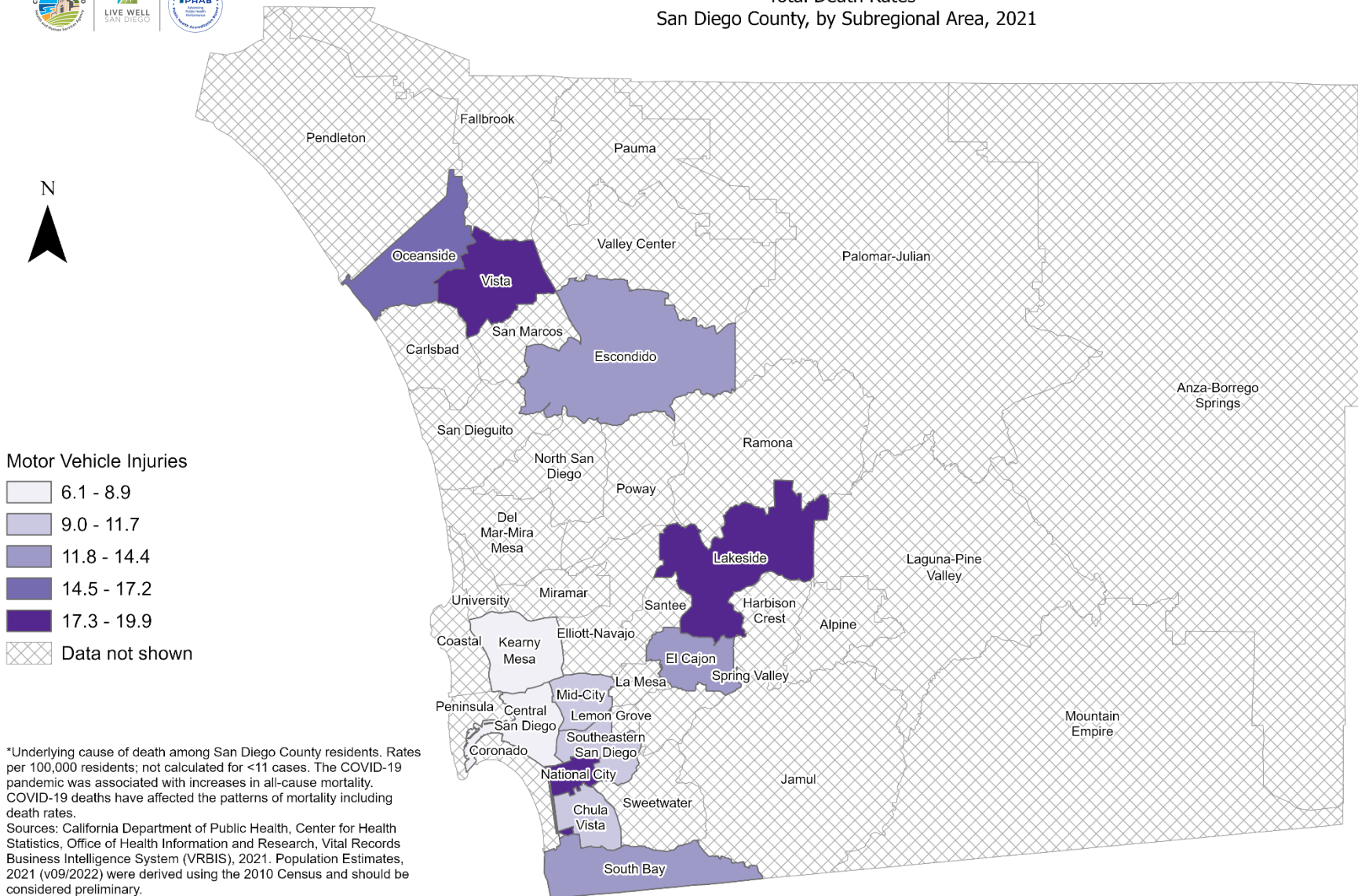
## Death Rates Among San Diego County Residents by Demographics, 2021:

- Total Rate
  - Race/Ethnicity
    - Asian/Pacific Islander (API)
    - Black
    - Hispanic
    - White
  - Age Group
    - 0-9 Years
    - 10-19 Years
    - 20-29 Years
    - 30-39 Years
    - 40-49 Years
    - 50-59 Years
    - 60-69 Years
    - 70-79 Years
    - 80+ Years



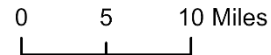


## Total Death Rates\* San Diego County, by Subregional Area, 2021



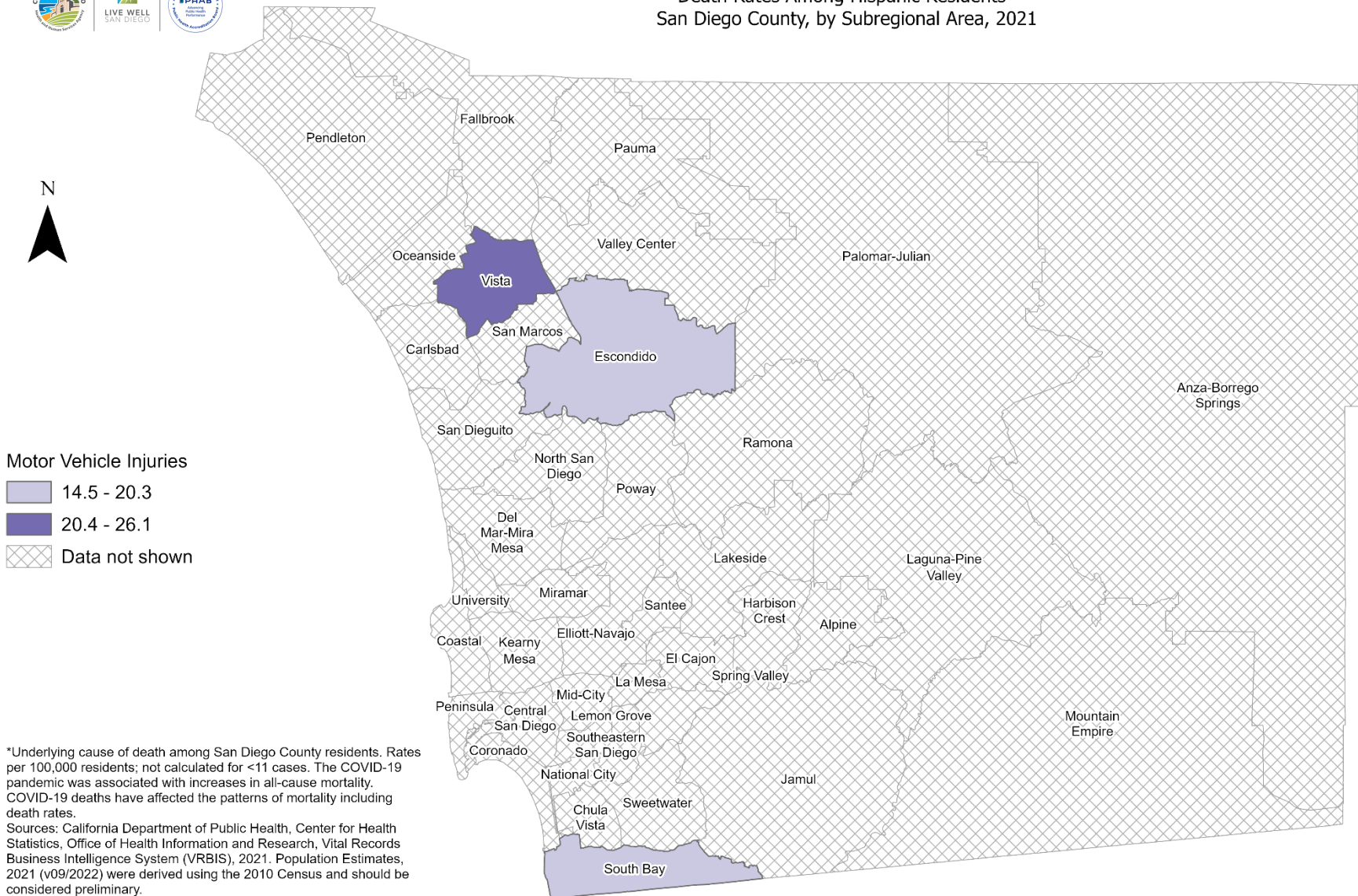
\*Underlying cause of death among San Diego County residents. Rates per 100,000 residents; not calculated for <11 cases. The COVID-19 pandemic was associated with increases in all-cause mortality. COVID-19 deaths have affected the patterns of mortality including death rates.  
 Sources: California Department of Public Health, Center for Health Statistics, Office of Health Information and Research, Vital Records Business Intelligence System (VRBIS), 2021. Population Estimates, 2021 (v09/2022) were derived using the 2010 Census and should be considered preliminary.

Maps & Analysis by County of San Diego, Health and Human Services Agency, Public Health Services, Community Health Statistics Unit.  
 Contact 619.692.6672.  
[https://www.sandiegocounty.gov/hhsa/programs/phs/community\\_health\\_statistics/](https://www.sandiegocounty.gov/hhsa/programs/phs/community_health_statistics/)  
 August, 2023.  
 LiveWellSD.org.



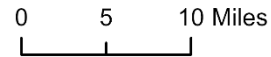


## Death Rates Among Hispanic Residents\* San Diego County, by Subregional Area, 2021



\*Underlying cause of death among San Diego County residents. Rates per 100,000 residents; not calculated for <11 cases. The COVID-19 pandemic was associated with increases in all-cause mortality. COVID-19 deaths have affected the patterns of mortality including death rates.  
Sources: California Department of Public Health, Center for Health Statistics, Office of Health Information and Research, Vital Records Business Intelligence System (VRBIS), 2021. Population Estimates, 2021 (v09/2022) were derived using the 2010 Census and should be considered preliminary.

Maps & Analysis by County of San Diego, Health and Human Services Agency, Public Health Services, Community Health Statistics Unit.  
Contact 619.692.6672.  
[https://www.sandiegocounty.gov/hhsa/programs/phs/community\\_health\\_statistics/](https://www.sandiegocounty.gov/hhsa/programs/phs/community_health_statistics/)  
August, 2023.  
LiveWellSD.org.



# SECTION 2



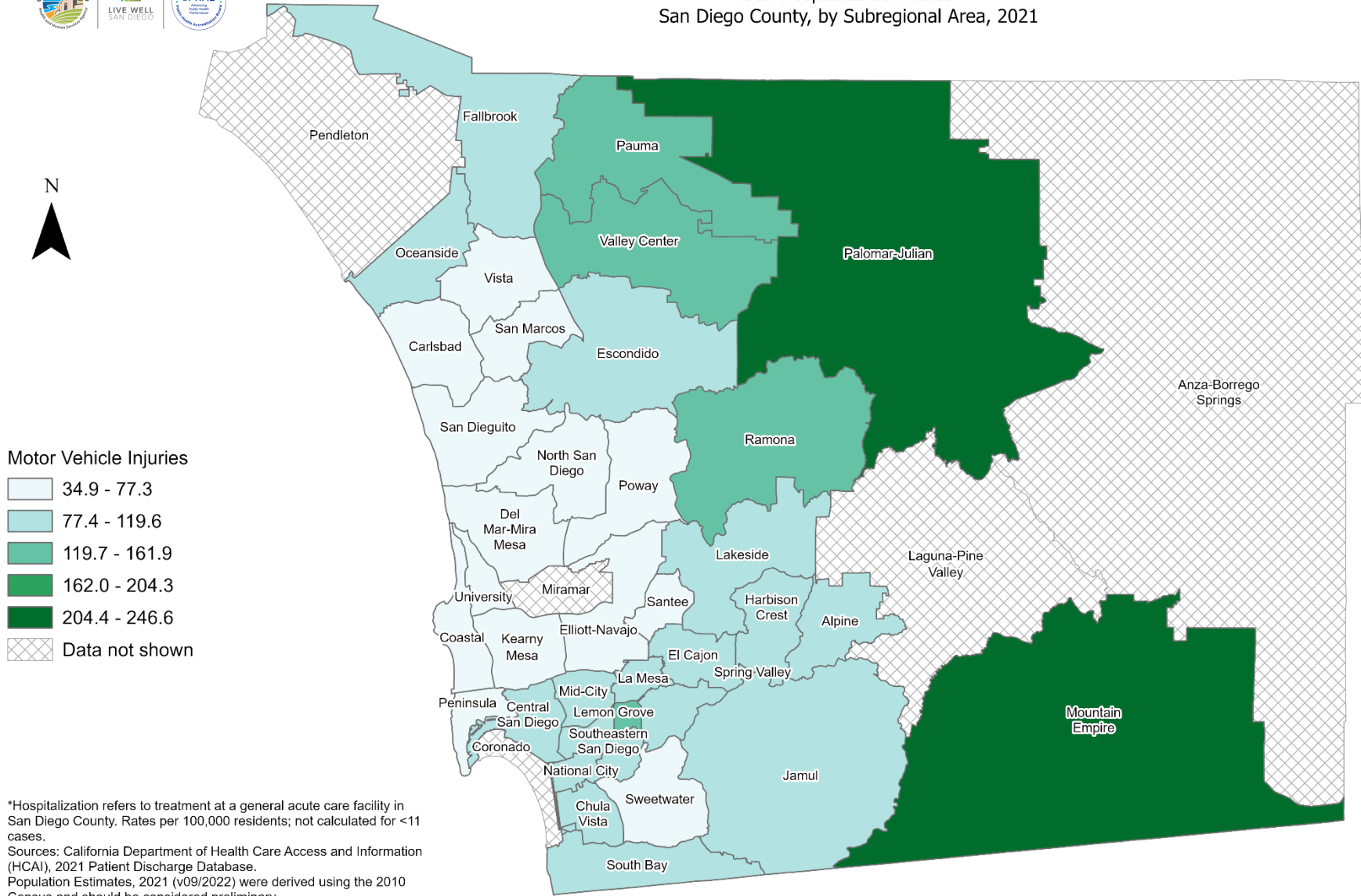
## Hospitalization Rates Among San Diego County Residents by Demographics, 2021:

- Total Rate
  - Race/Ethnicity
    - Asian/Pacific Islander (API)
    - Black
    - Hispanic
    - White
  - Age Group
    - 0-9 Years
    - 10-19 Years
    - 20-29 Years
    - 30-39 Years
    - 40-49 Years
    - 50-59 Years
    - 60-69 Years
    - 70-79 Years
    - 80+ Years



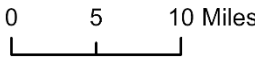


### Total Hospitalization Rates\* San Diego County, by Subregional Area, 2021



\*Hospitalization refers to treatment at a general acute care facility in San Diego County. Rates per 100,000 residents; not calculated for <11 cases.  
Sources: California Department of Health Care Access and Information (HCAI), 2021 Patient Discharge Database.  
Population Estimates, 2021 (v09/2022) were derived using the 2010 Census and should be considered preliminary.

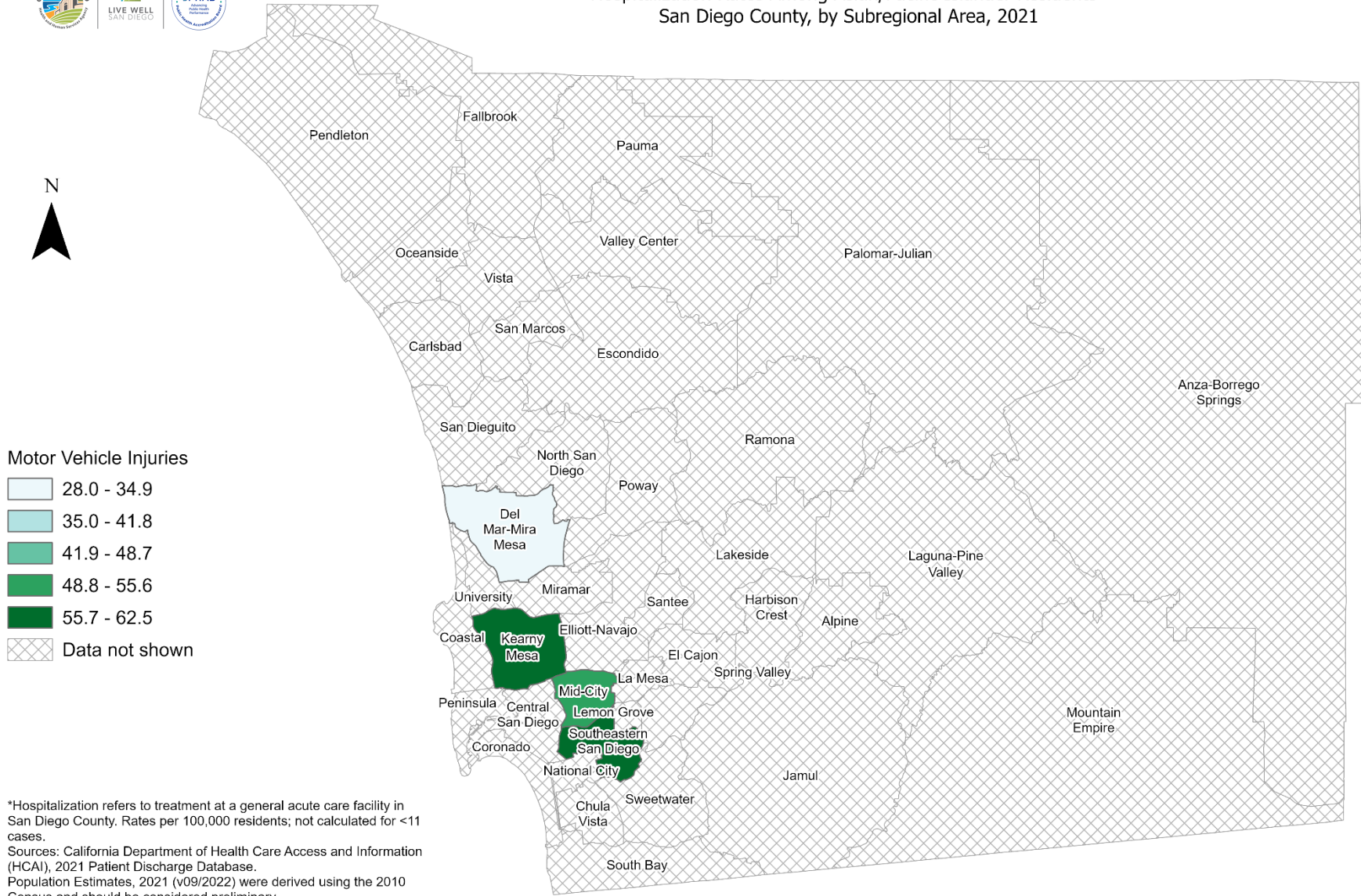
Maps & Analysis by County of San Diego, Health and Human Services Agency, Public Health Services, Community Health Statistics Unit.  
Contact 619.692.6672. [https://www.sandiegocounty.gov/hhsa/programs/phs/community\\_health\\_statistics/](https://www.sandiegocounty.gov/hhsa/programs/phs/community_health_statistics/).  
August, 2023.  
LiveWellSD.org.





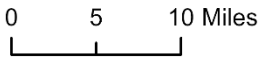


### Hospitalization Rates Among Asian/Pacific Islander Residents\* San Diego County, by Subregional Area, 2021



\*Hospitalization refers to treatment at a general acute care facility in San Diego County. Rates per 100,000 residents; not calculated for <11 cases.  
Sources: California Department of Health Care Access and Information (HCAI), 2021 Patient Discharge Database.  
Population Estimates, 2021 (v09/2022) were derived using the 2010 Census and should be considered preliminary.

Maps & Analysis by County of San Diego, Health and Human Services Agency, Public Health Services, Community Health Statistics Unit.  
Contact 619.692.6672. [https://www.sandiegocounty.gov/hhsa/programs/phs/community\\_health\\_statistics/](https://www.sandiegocounty.gov/hhsa/programs/phs/community_health_statistics/).  
August, 2023.  
LiveWellSD.org.

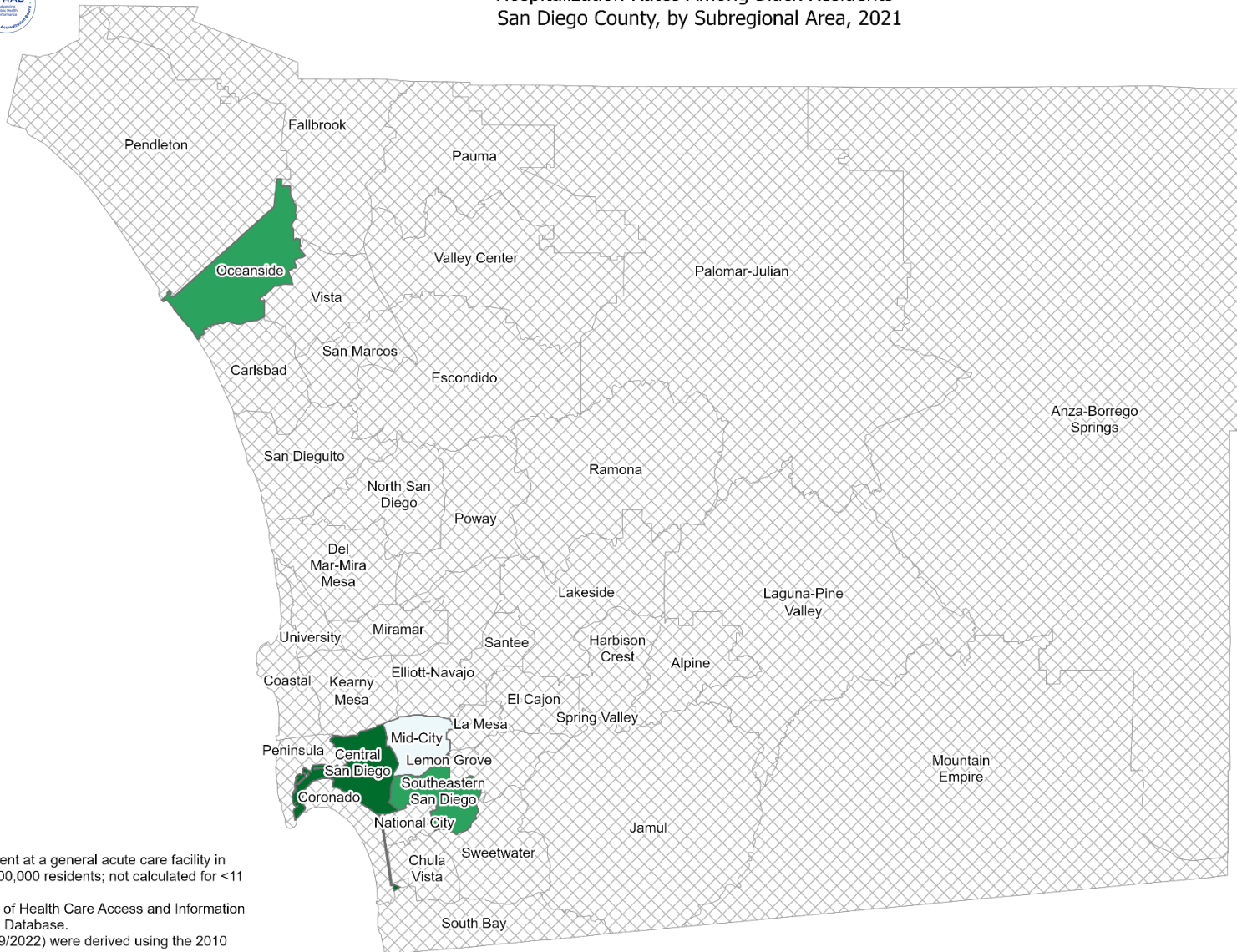
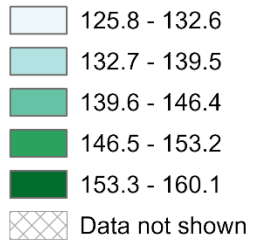




### Hospitalization Rates Among Black Residents\* San Diego County, by Subregional Area, 2021



#### Motor Vehicle Injuries



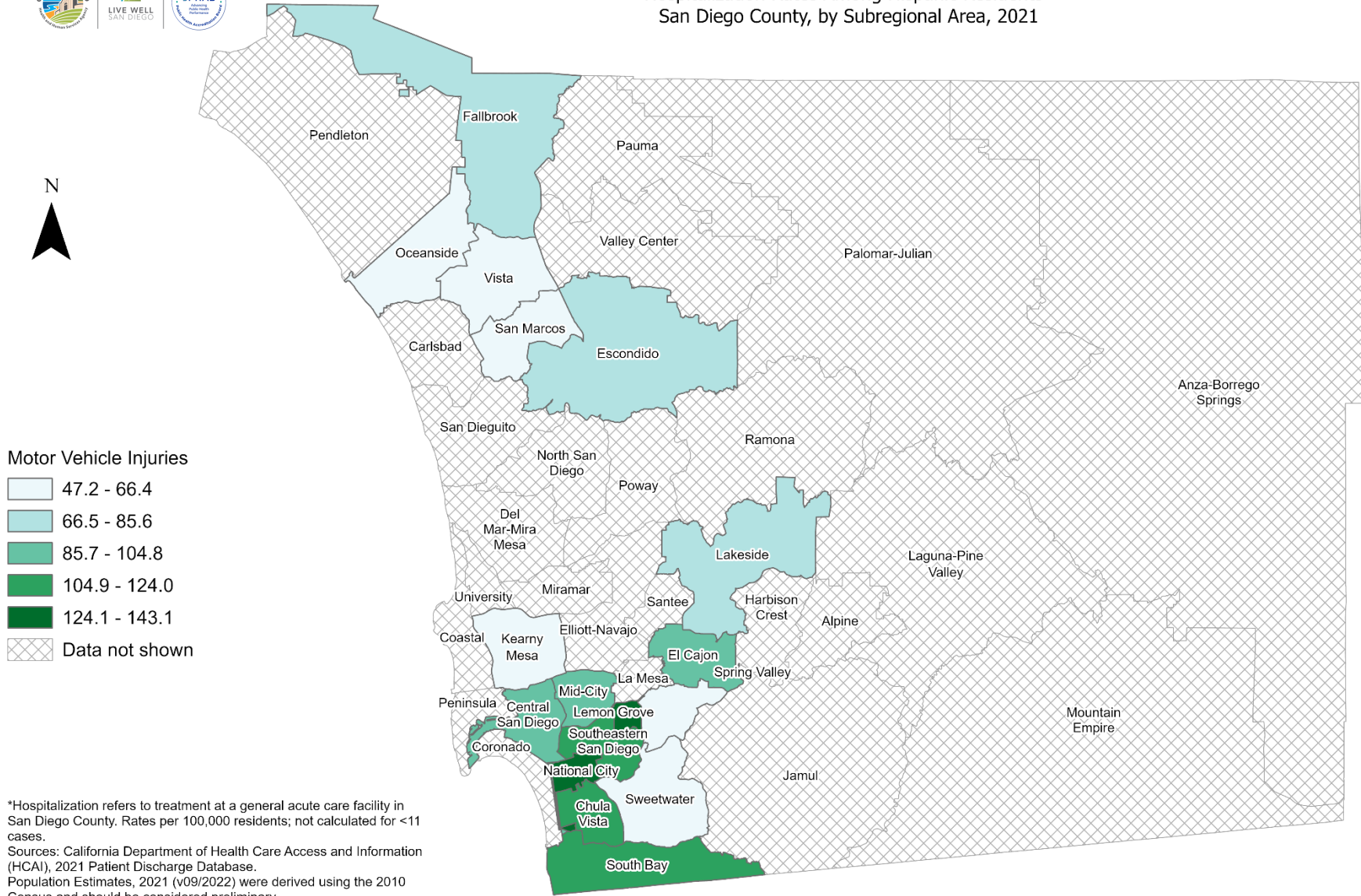
\*Hospitalization refers to treatment at a general acute care facility in San Diego County. Rates per 100,000 residents; not calculated for <11 cases.  
Sources: California Department of Health Care Access and Information (HCAI), 2021 Patient Discharge Database.  
Population Estimates, 2021 (v09/2022) were derived using the 2010 Census and should be considered preliminary.

Maps & Analysis by County of San Diego, Health and Human Services Agency, Public Health Services, Community Health Statistics Unit.  
Contact 619.692.6672. [https://www.sandiegocounty.gov/hhsa/programs/phs/community\\_health\\_statistics/](https://www.sandiegocounty.gov/hhsa/programs/phs/community_health_statistics/).  
August, 2023.  
LiveWellSD.org.



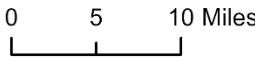


### Hospitalization Rates Among Hispanic Residents\* San Diego County, by Subregional Area, 2021



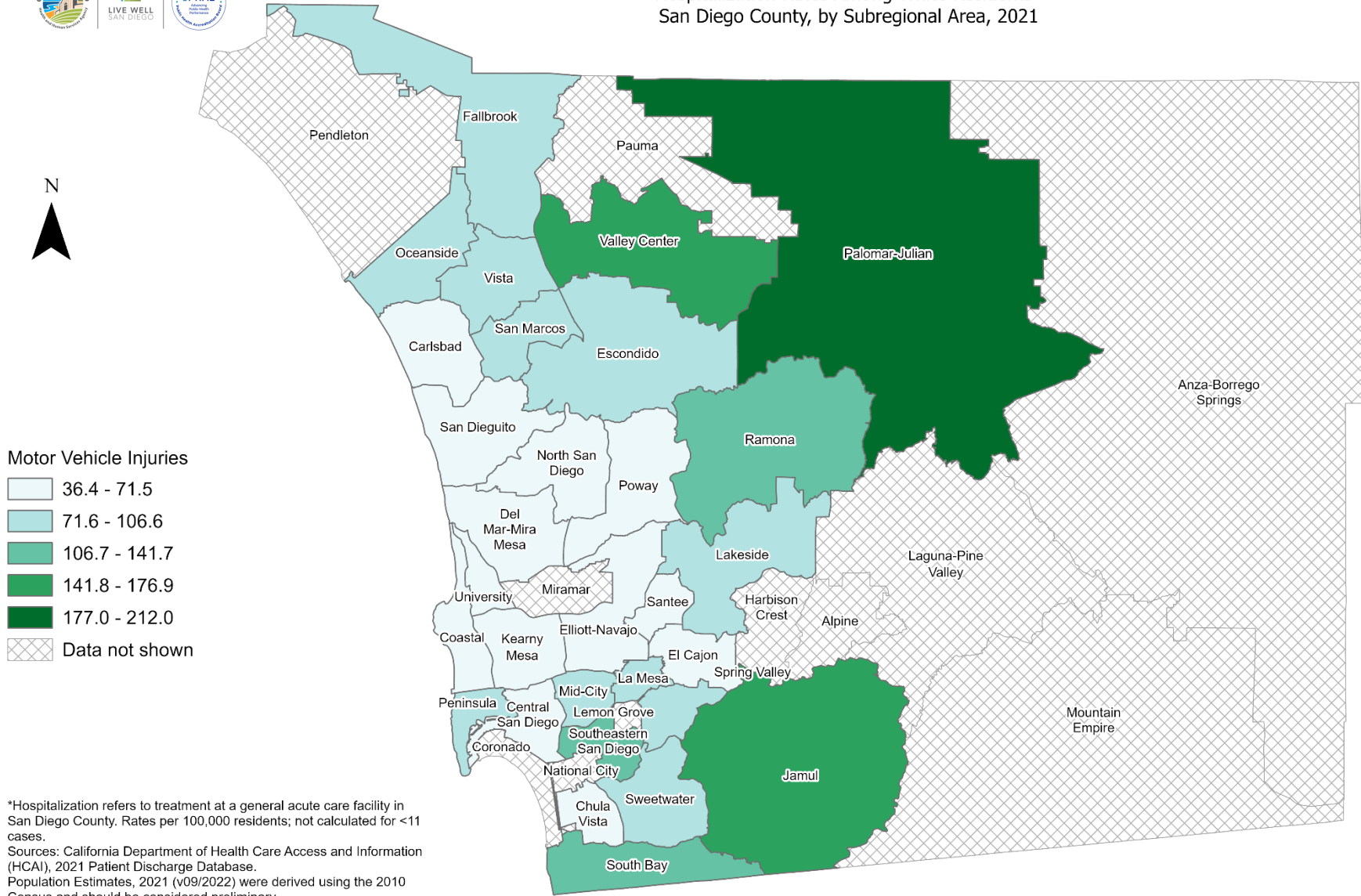
\*Hospitalization refers to treatment at a general acute care facility in San Diego County. Rates per 100,000 residents; not calculated for <11 cases.  
Sources: California Department of Health Care Access and Information (HCAI), 2021 Patient Discharge Database.  
Population Estimates, 2021 (v09/2022) were derived using the 2010 Census and should be considered preliminary.

Maps & Analysis by County of San Diego, Health and Human Services Agency, Public Health Services, Community Health Statistics Unit.  
Contact 619.692.6672. [https://www.sandiegocounty.gov/hhsa/programs/phs/community\\_health\\_statistics/](https://www.sandiegocounty.gov/hhsa/programs/phs/community_health_statistics/)  
August, 2023.  
LiveWellSD.org.



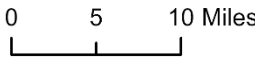


### Hospitalization Rates Among White Residents\* San Diego County, by Subregional Area, 2021



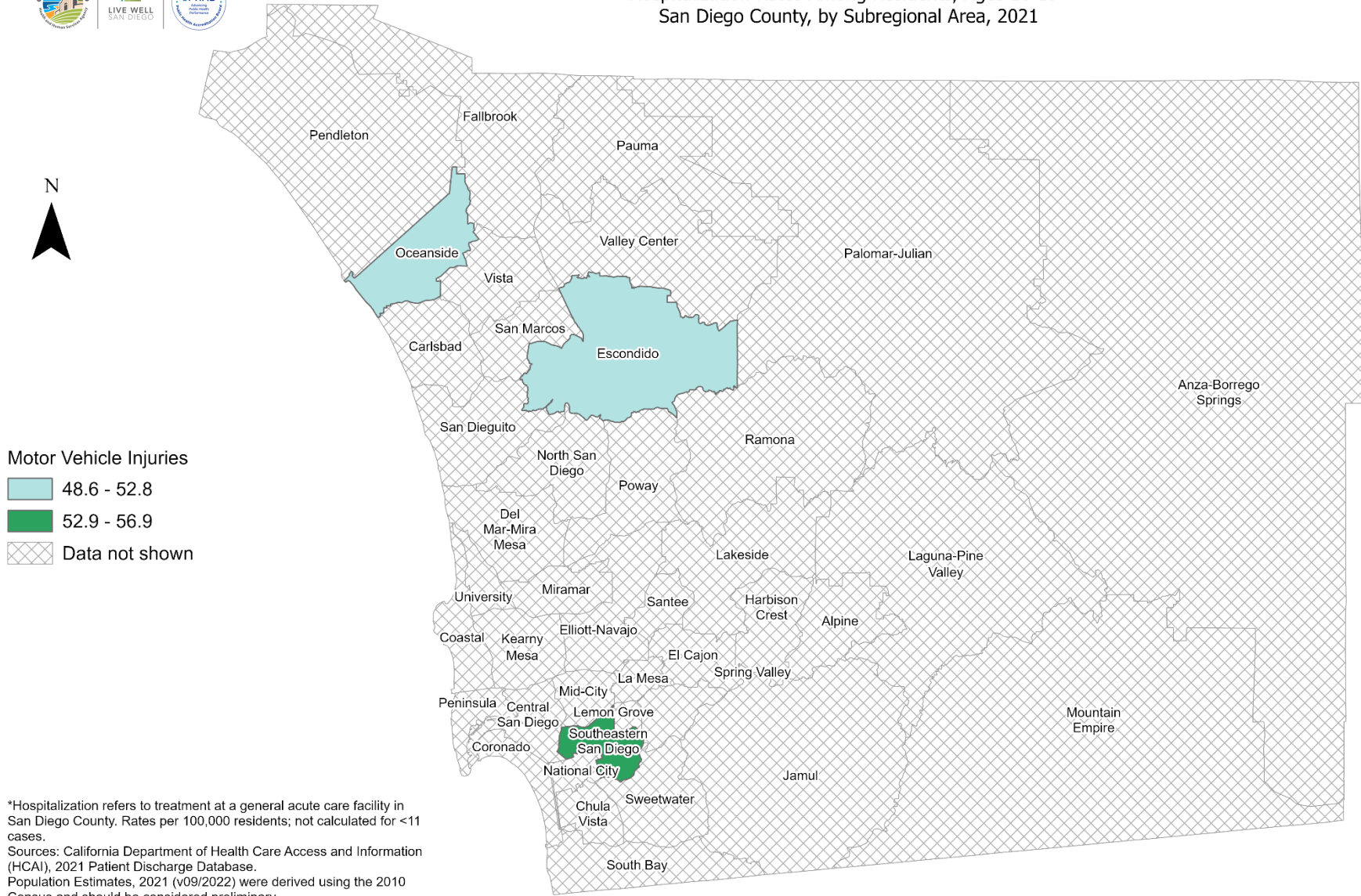
\*Hospitalization refers to treatment at a general acute care facility in San Diego County. Rates per 100,000 residents; not calculated for <11 cases.  
Sources: California Department of Health Care Access and Information (HCAI), 2021 Patient Discharge Database.  
Population Estimates, 2021 (v09/2022) were derived using the 2010 Census and should be considered preliminary.

Maps & Analysis by County of San Diego, Health and Human Services Agency, Public Health Services, Community Health Statistics Unit.  
Contact 619.692.6672. [https://www.sandiegocounty.gov/hhsa/programs/phs/community\\_health\\_statistics/](https://www.sandiegocounty.gov/hhsa/programs/phs/community_health_statistics/).  
August, 2023.  
LiveWellSD.org.





### Hospitalization Rates Among Residents, Ages 10-19\* San Diego County, by Subregional Area, 2021

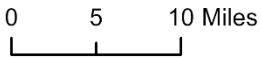


**Motor Vehicle Injuries**

- 48.6 - 52.8
- 52.9 - 56.9
- Data not shown

\*Hospitalization refers to treatment at a general acute care facility in San Diego County. Rates per 100,000 residents; not calculated for <11 cases.  
Sources: California Department of Health Care Access and Information (HCAI), 2021 Patient Discharge Database.  
Population Estimates, 2021 (v09/2022) were derived using the 2010 Census and should be considered preliminary.

Maps & Analysis by County of San Diego, Health and Human Services Agency, Public Health Services, Community Health Statistics Unit.  
Contact 619.692.6672. [https://www.sandiegocounty.gov/hhsa/programs/phs/community\\_health\\_statistics/](https://www.sandiegocounty.gov/hhsa/programs/phs/community_health_statistics/).  
August, 2023.  
LiveWellSD.org.

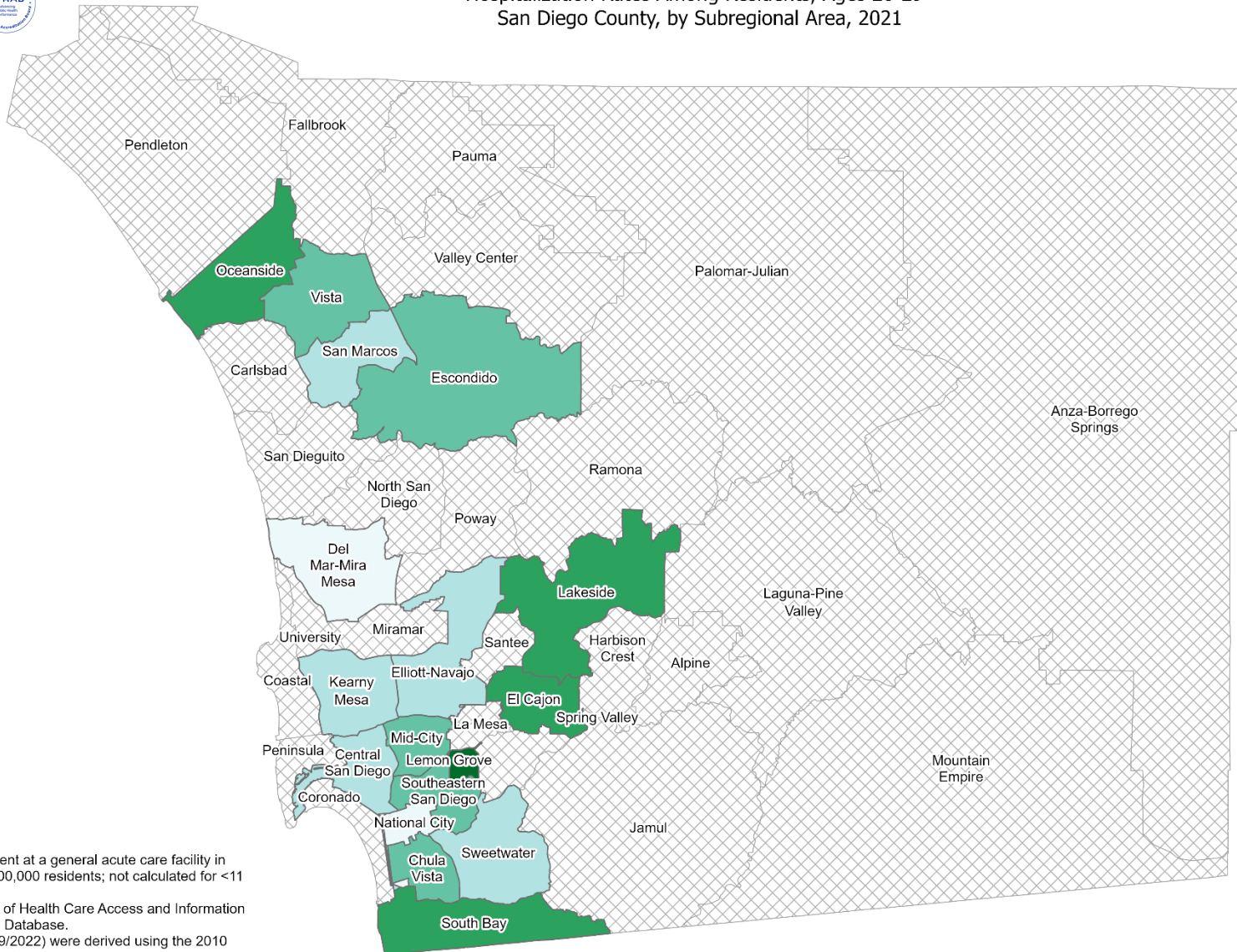
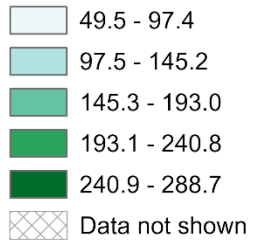




### Hospitalization Rates Among Residents, Ages 20-29\* San Diego County, by Subregional Area, 2021



#### Motor Vehicle Injuries



\*Hospitalization refers to treatment at a general acute care facility in San Diego County. Rates per 100,000 residents; not calculated for <11 cases.  
Sources: California Department of Health Care Access and Information (HCAI), 2021 Patient Discharge Database.  
Population Estimates, 2021 (v09/2022) were derived using the 2010 Census and should be considered preliminary.

Maps & Analysis by County of San Diego, Health and Human Services Agency, Public Health Services, Community Health Statistics Unit.  
Contact 619.692.6672. [https://www.sandiegocounty.gov/hhsa/programs/phs/community\\_health\\_statistics/](https://www.sandiegocounty.gov/hhsa/programs/phs/community_health_statistics/).  
August, 2023.  
LiveWellSD.org.



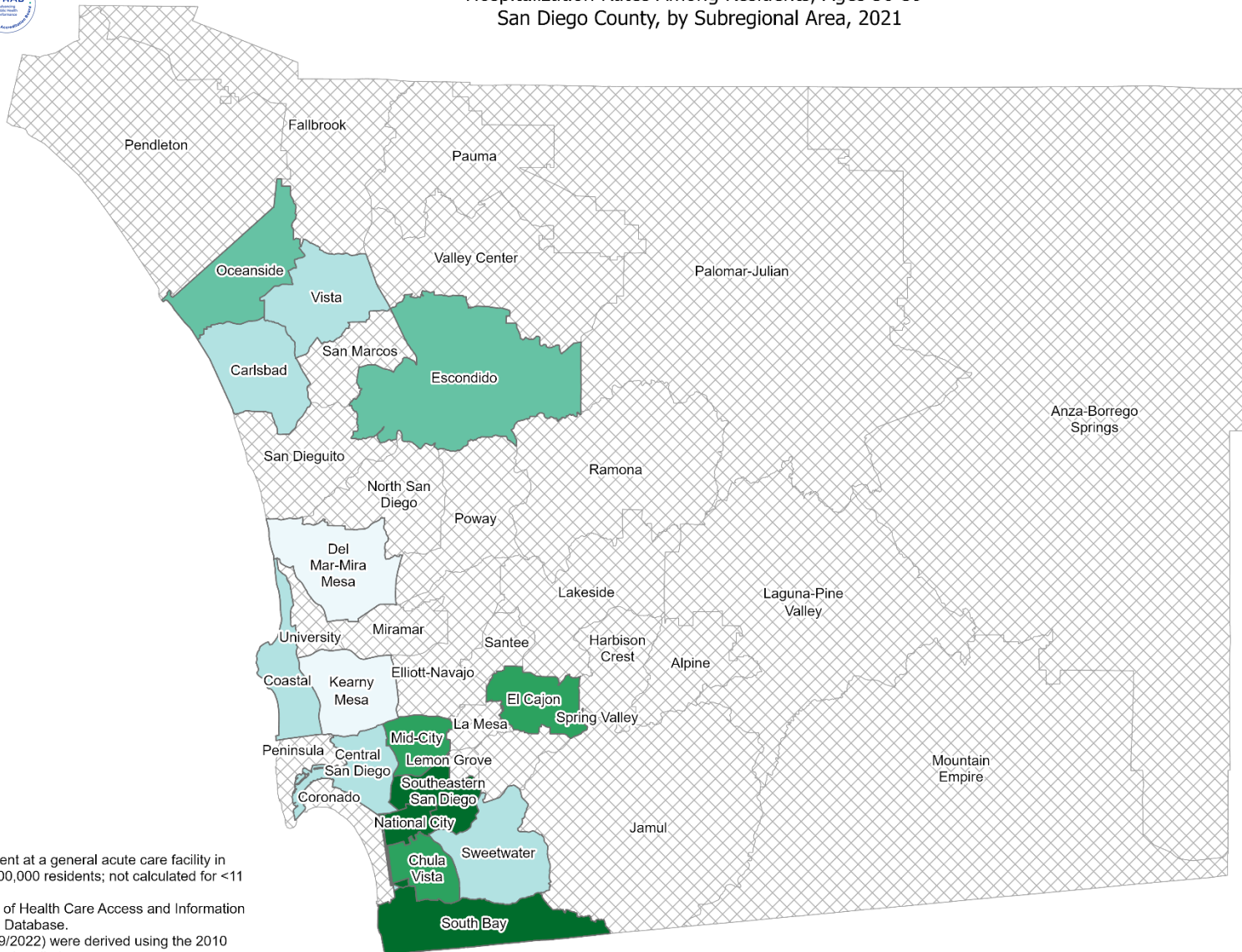


### Hospitalization Rates Among Residents, Ages 30-39\* San Diego County, by Subregional Area, 2021



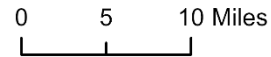
#### Motor Vehicle Injuries

- 55.1 - 80.6
- 80.7 - 106.1
- 106.2 - 131.6
- 131.7 - 157.2
- 157.3 - 182.7
- Data not shown



\*Hospitalization refers to treatment at a general acute care facility in San Diego County. Rates per 100,000 residents; not calculated for <11 cases.  
Sources: California Department of Health Care Access and Information (HCAI), 2021 Patient Discharge Database.  
Population Estimates, 2021 (v09/2022) were derived using the 2010 Census and should be considered preliminary.

Maps & Analysis by County of San Diego, Health and Human Services Agency, Public Health Services, Community Health Statistics Unit.  
Contact 619.692.6672. [https://www.sandiegocounty.gov/hhsa/programs/phs/community\\_health\\_statistics/](https://www.sandiegocounty.gov/hhsa/programs/phs/community_health_statistics/).  
August, 2023.  
LiveWellSD.org.

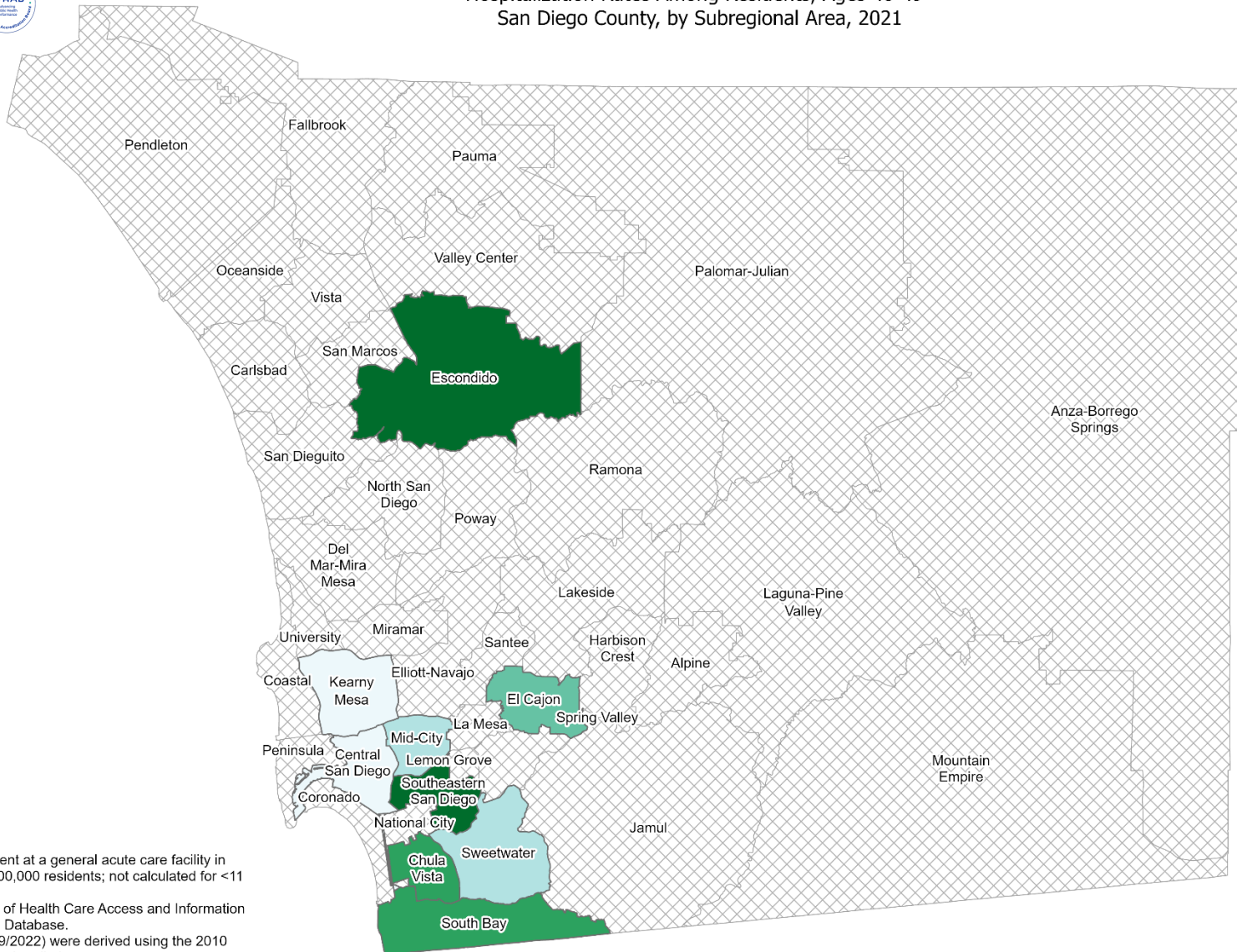
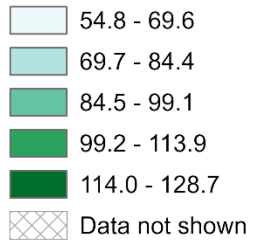




### Hospitalization Rates Among Residents, Ages 40-49\* San Diego County, by Subregional Area, 2021



#### Motor Vehicle Injuries



\*Hospitalization refers to treatment at a general acute care facility in San Diego County. Rates per 100,000 residents; not calculated for <11 cases.  
Sources: California Department of Health Care Access and Information (HCAI), 2021 Patient Discharge Database.  
Population Estimates, 2021 (v09/2022) were derived using the 2010 Census and should be considered preliminary.

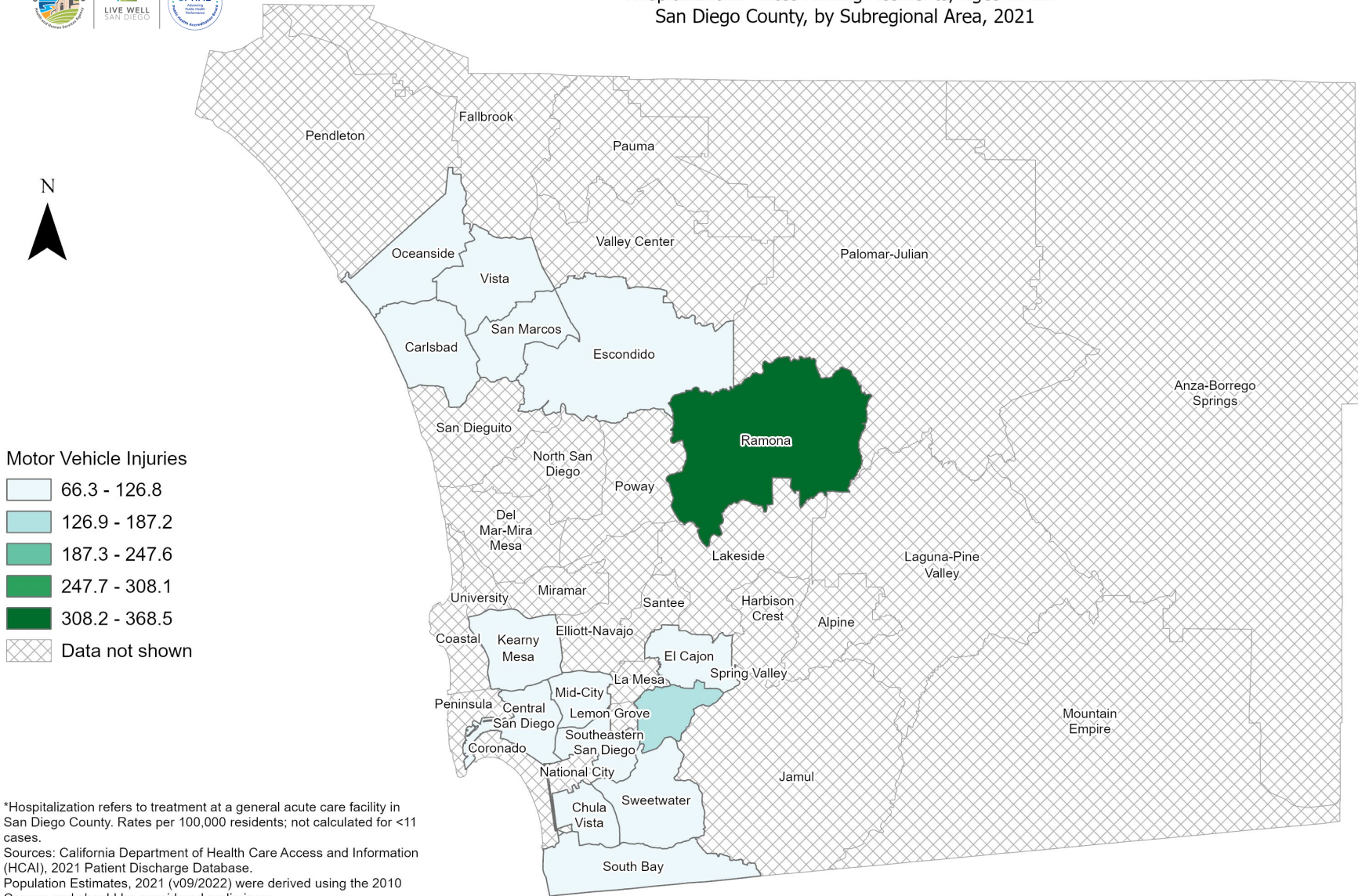
Maps & Analysis by County of San Diego, Health and Human Services Agency, Public Health Services, Community Health Statistics Unit.  
Contact 619.692.6672. [https://www.sandiegocounty.gov/hhsa/programs/phs/community\\_health\\_statistics/](https://www.sandiegocounty.gov/hhsa/programs/phs/community_health_statistics/).  
August, 2023.  
LiveWellSD.org.





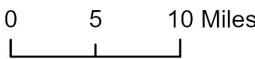


### Hospitalization Rates Among Residents, Ages 50-59\* San Diego County, by Subregional Area, 2021



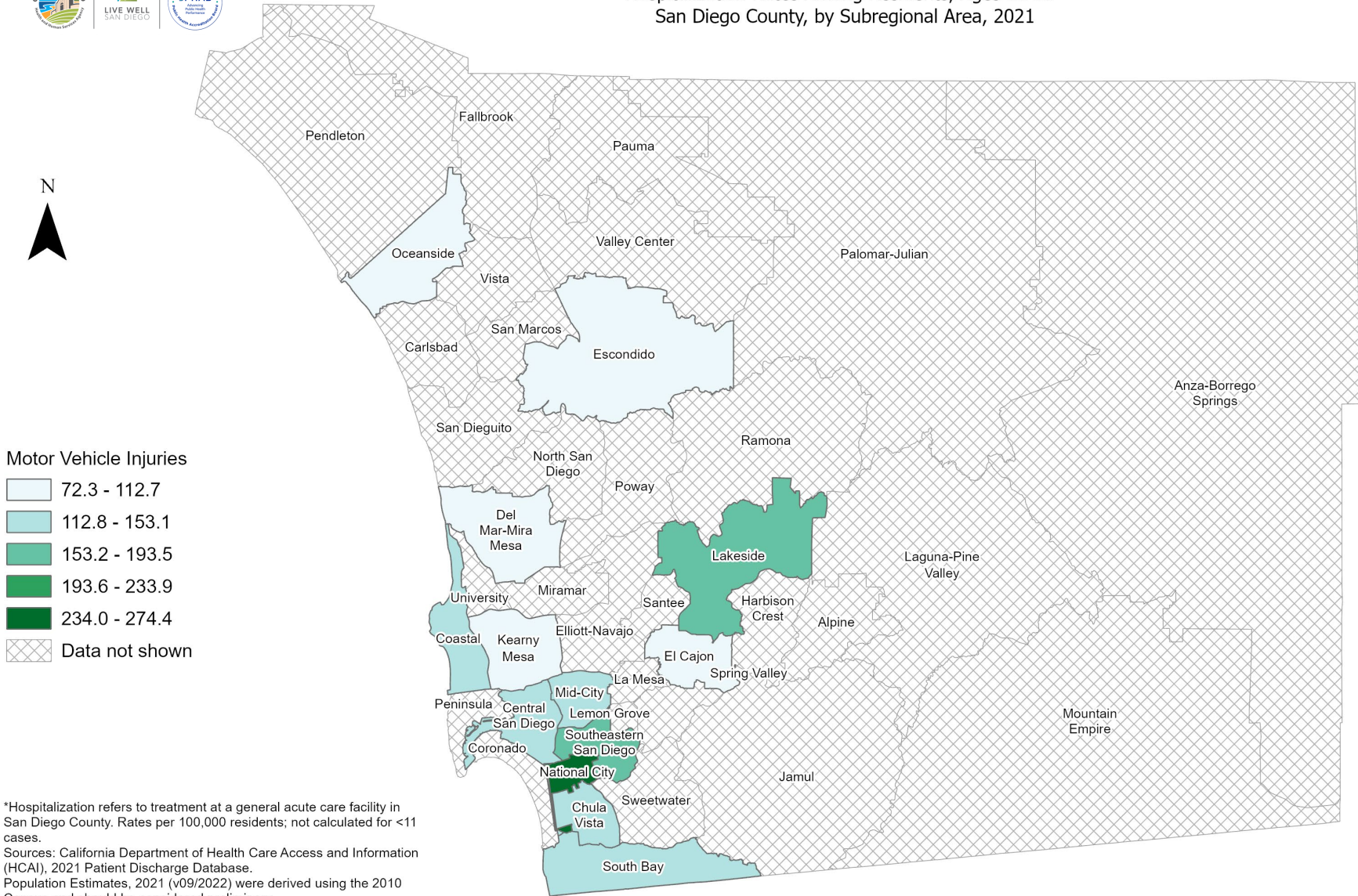
\*Hospitalization refers to treatment at a general acute care facility in San Diego County. Rates per 100,000 residents; not calculated for <11 cases.  
Sources: California Department of Health Care Access and Information (HCAI), 2021 Patient Discharge Database, Population Estimates, 2021 (v09/2022) were derived using the 2010 Census and should be considered preliminary.

Maps & Analysis by County of San Diego, Health and Human Services Agency, Public Health Services, Community Health Statistics Unit. Contact 619.692.6672. [https://www.sandiegocounty.gov/hhsa/programs/phs/community\\_health\\_statistics/](https://www.sandiegocounty.gov/hhsa/programs/phs/community_health_statistics/), August, 2023. LiveWellSD.org.



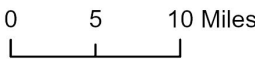


### Hospitalization Rates Among Residents, Ages 60-69\* San Diego County, by Subregional Area, 2021



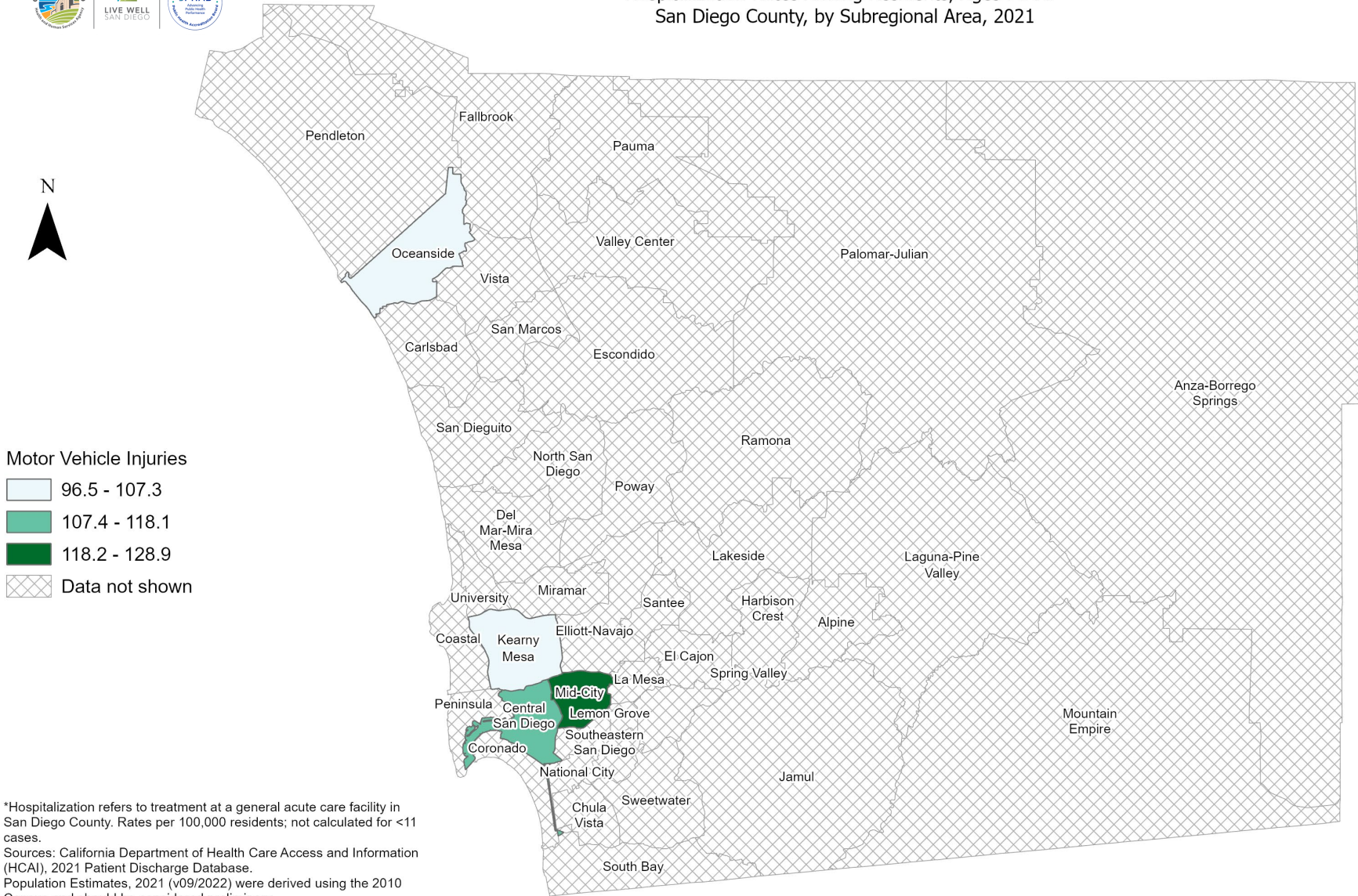
\*Hospitalization refers to treatment at a general acute care facility in San Diego County. Rates per 100,000 residents; not calculated for <11 cases.  
Sources: California Department of Health Care Access and Information (HCAI), 2021 Patient Discharge Database, Population Estimates, 2021 (v09/2022) were derived using the 2010 Census and should be considered preliminary.

Maps & Analysis by County of San Diego, Health and Human Services Agency, Public Health Services, Community Health Statistics Unit. Contact 619.692.6672. [https://www.sandiegocounty.gov/hhsa/programs/phs/community\\_health\\_statistics/](https://www.sandiegocounty.gov/hhsa/programs/phs/community_health_statistics/), August, 2023. LiveWellSD.org.



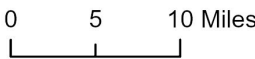


### Hospitalization Rates Among Residents, Ages 70-79\* San Diego County, by Subregional Area, 2021



\*Hospitalization refers to treatment at a general acute care facility in San Diego County. Rates per 100,000 residents; not calculated for <11 cases.  
Sources: California Department of Health Care Access and Information (HCAI), 2021 Patient Discharge Database, Population Estimates, 2021 (v09/2022) were derived using the 2010 Census and should be considered preliminary.

Maps & Analysis by County of San Diego, Health and Human Services Agency, Public Health Services, Community Health Statistics Unit. Contact 619.692.6672. [https://www.sandiegocounty.gov/hhsa/programs/phs/community\\_health\\_statistics/](https://www.sandiegocounty.gov/hhsa/programs/phs/community_health_statistics/), August, 2023. LiveWellSD.org.



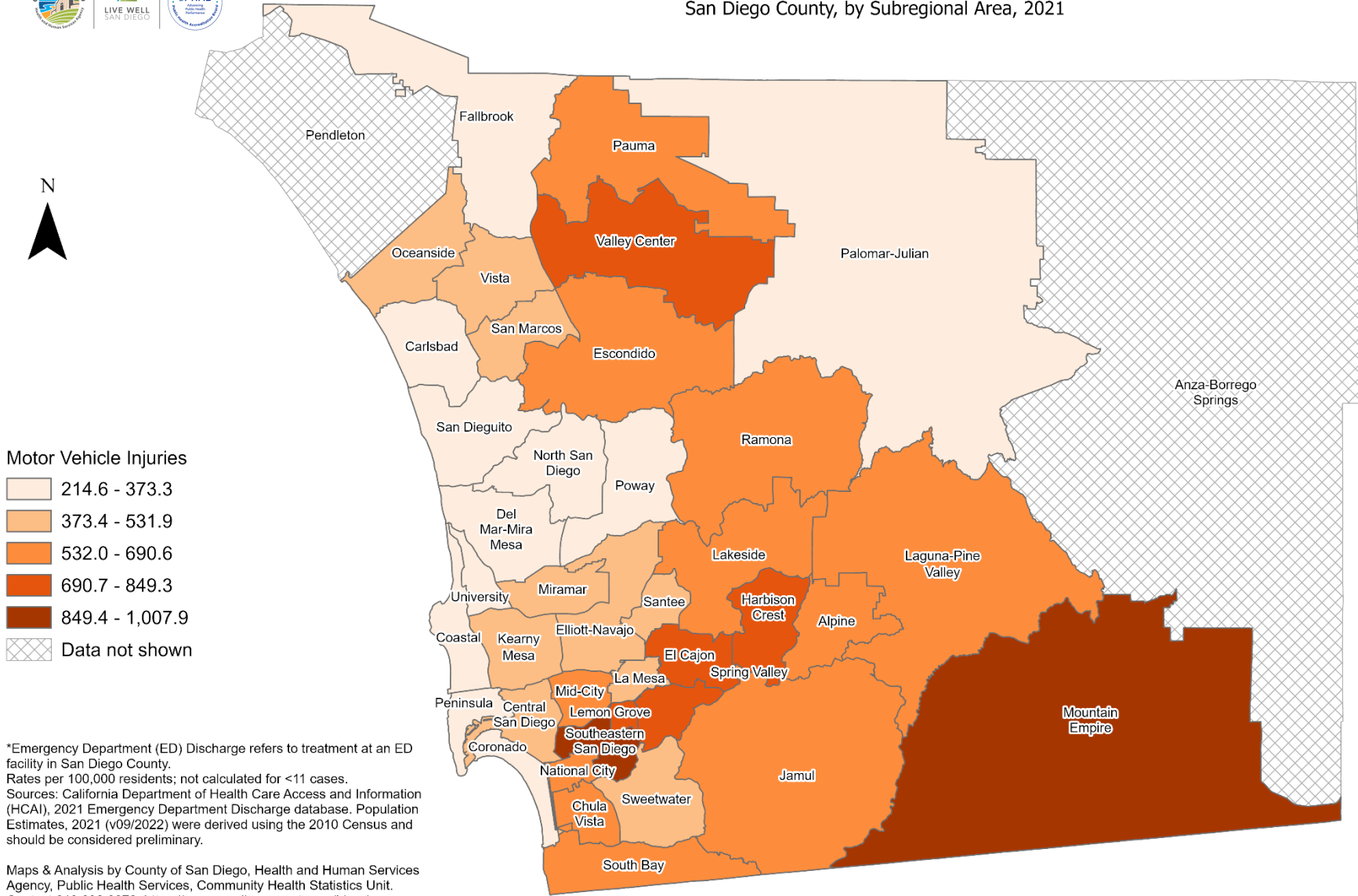
# SECTION 3

## Emergency Department (ED) Rates Among San Diego County Residents by Demographics, 2021:

- Total Rate
  - Race/Ethnicity
    - Asian/Pacific Islander (API)
    - Black
    - Hispanic
    - White
  - Age Group
    - 0-9 Years
    - 10-19 Years
    - 20-29 Years
    - 30-39 Years
    - 40-49 Years
    - 50-59 Years
    - 60-69 Years
    - 70-79 Years
    - 80+ Years



### Total Emergency Department Discharge Rates\* San Diego County, by Subregional Area, 2021



**Motor Vehicle Injuries**

- 214.6 - 373.3
- 373.4 - 531.9
- 532.0 - 690.6
- 690.7 - 849.3
- 849.4 - 1,007.9
- Data not shown

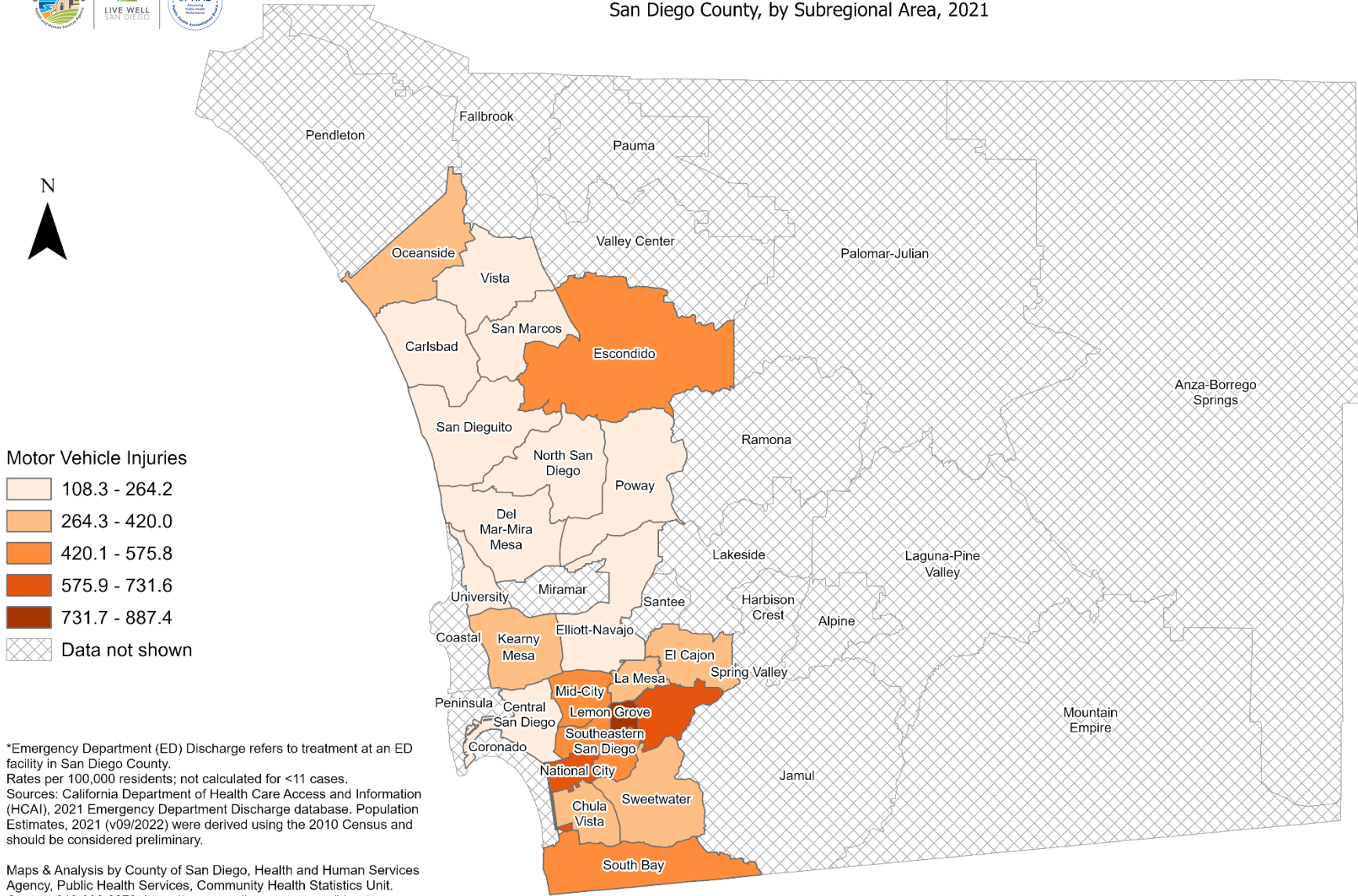
\*Emergency Department (ED) Discharge refers to treatment at an ED facility in San Diego County. Rates per 100,000 residents; not calculated for <11 cases. Sources: California Department of Health Care Access and Information (HCAI), 2021 Emergency Department Discharge database. Population Estimates, 2021 (v09/2022) were derived using the 2010 Census and should be considered preliminary.

Maps & Analysis by County of San Diego, Health and Human Services Agency, Public Health Services, Community Health Statistics Unit. Contact 619.692.6672. [https://www.sandiegocounty.gov/hhsa/programs/phs/community\\_health\\_statistics/](https://www.sandiegocounty.gov/hhsa/programs/phs/community_health_statistics/). August, 2023. LiveWellSD.org.





### Emergency Department Discharge Rates Among Asian/Pacific Islander Residents\* San Diego County, by Subregional Area, 2021

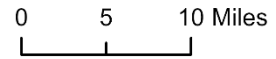


**Motor Vehicle Injuries**

- 108.3 - 264.2
- 264.3 - 420.0
- 420.1 - 575.8
- 575.9 - 731.6
- 731.7 - 887.4
- Data not shown

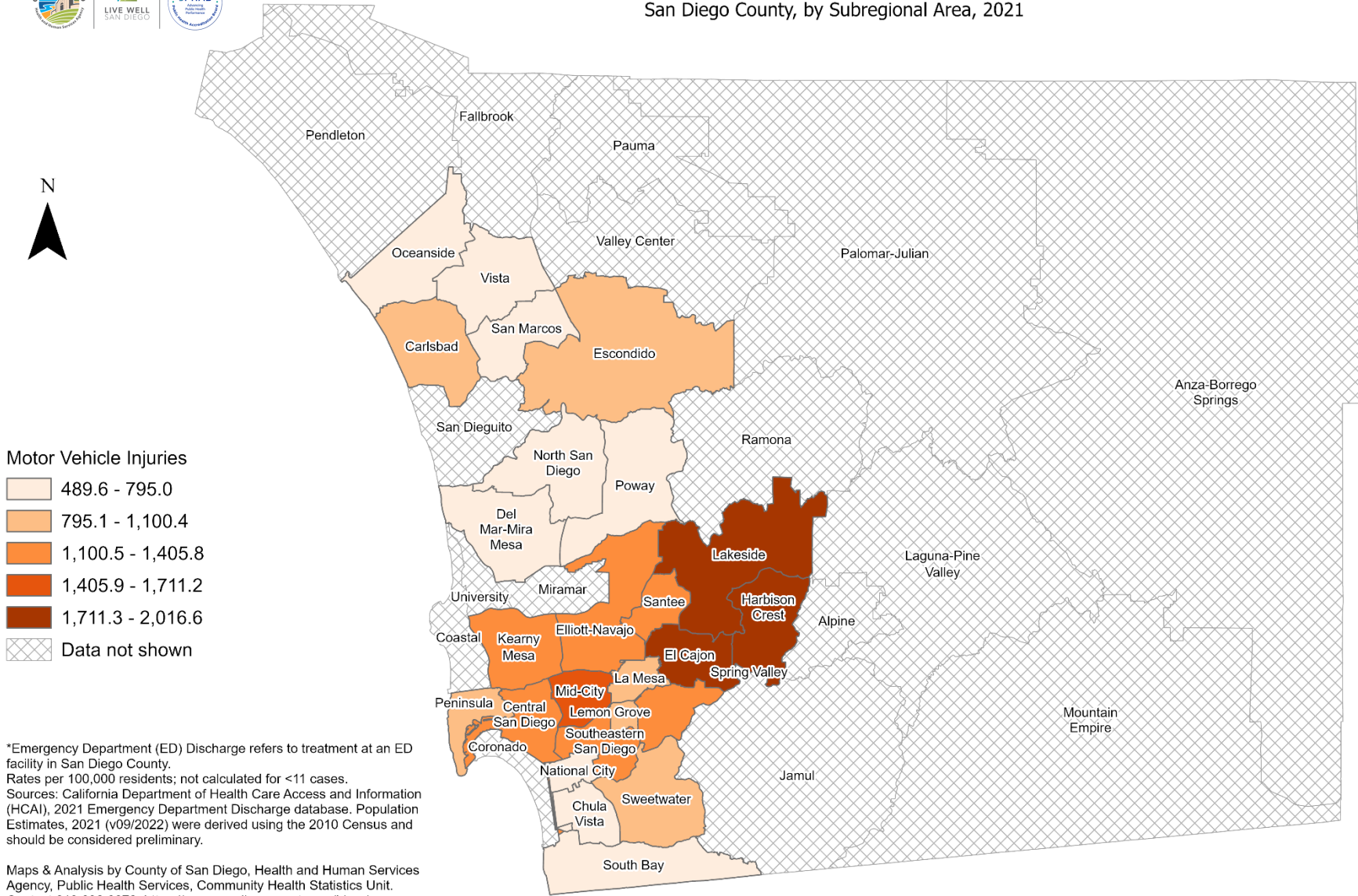
\*Emergency Department (ED) Discharge refers to treatment at an ED facility in San Diego County. Rates per 100,000 residents; not calculated for <11 cases. Sources: California Department of Health Care Access and Information (HCAI), 2021 Emergency Department Discharge database. Population Estimates, 2021 (v09/2022) were derived using the 2010 Census and should be considered preliminary.

Maps & Analysis by County of San Diego, Health and Human Services Agency, Public Health Services, Community Health Statistics Unit. Contact 619.692.6672. [https://www.sandiegocounty.gov/hhsa/programs/phs/community\\_health\\_statistics/](https://www.sandiegocounty.gov/hhsa/programs/phs/community_health_statistics/). August, 2023. LiveWellSD.org.



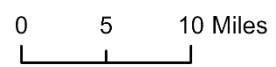


### Emergency Department Discharge Rates Among Black Residents\* San Diego County, by Subregional Area, 2021



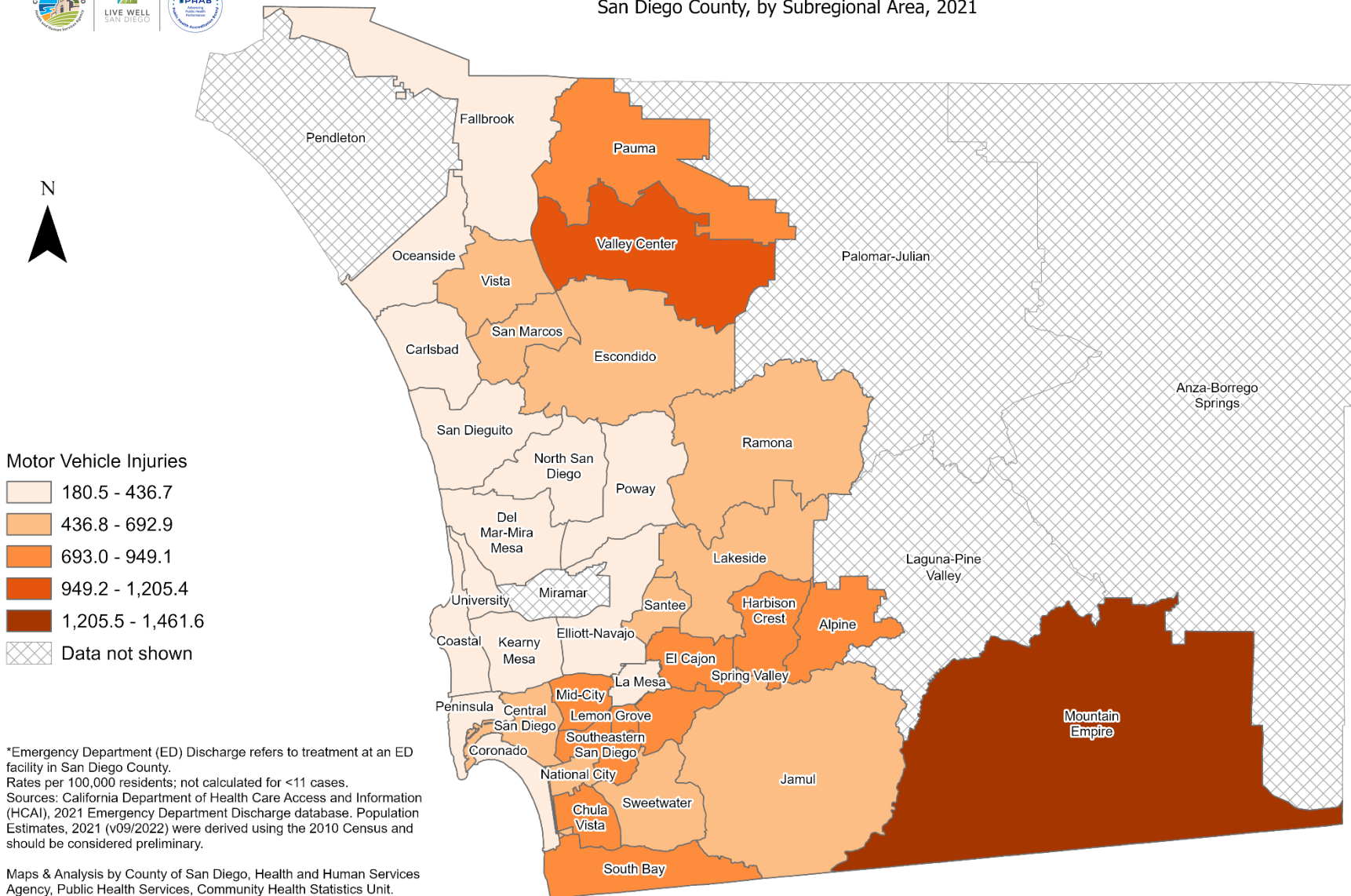
\*Emergency Department (ED) Discharge refers to treatment at an ED facility in San Diego County.  
 Rates per 100,000 residents; not calculated for <11 cases.  
 Sources: California Department of Health Care Access and Information (HCAI), 2021 Emergency Department Discharge database. Population Estimates, 2021 (v09/2022) were derived using the 2010 Census and should be considered preliminary.

Maps & Analysis by County of San Diego, Health and Human Services Agency, Public Health Services, Community Health Statistics Unit.  
 Contact 619.692.6672. [https://www.sandiegocounty.gov/hhsa/programs/phs/community\\_health\\_statistics/](https://www.sandiegocounty.gov/hhsa/programs/phs/community_health_statistics/).  
 August, 2023.  
 LiveWellSD.org.





### Emergency Department Discharge Rates Among Hispanic Residents\* San Diego County, by Subregional Area, 2021

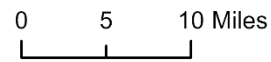


**Motor Vehicle Injuries**

- 180.5 - 436.7
- 436.8 - 692.9
- 693.0 - 949.1
- 949.2 - 1,205.4
- 1,205.5 - 1,461.6
- Data not shown

\*Emergency Department (ED) Discharge refers to treatment at an ED facility in San Diego County.  
 Rates per 100,000 residents; not calculated for <11 cases.  
 Sources: California Department of Health Care Access and Information (HCAI), 2021 Emergency Department Discharge database. Population Estimates, 2021 (v09/2022) were derived using the 2010 Census and should be considered preliminary.

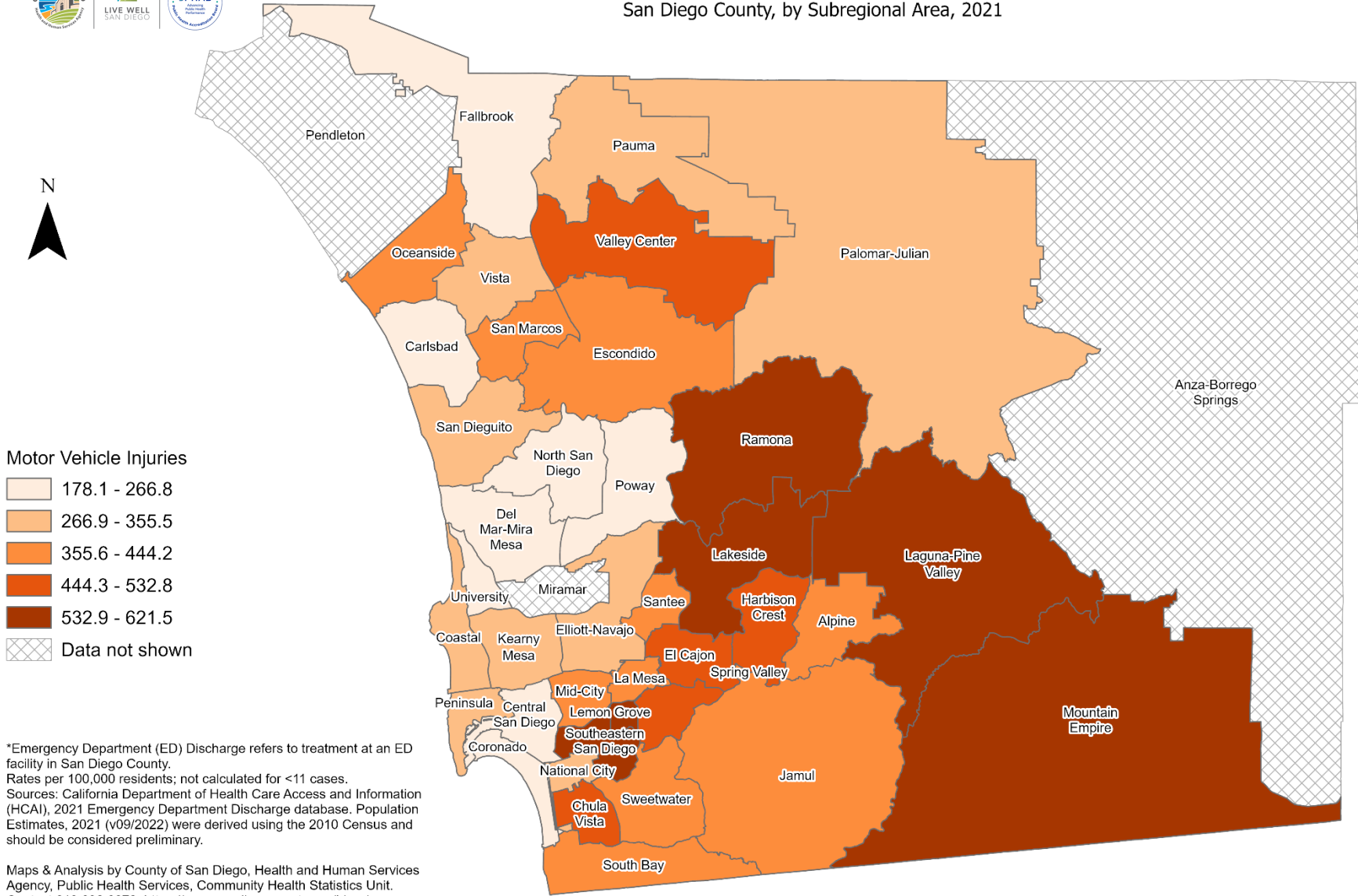
Maps & Analysis by County of San Diego, Health and Human Services Agency, Public Health Services, Community Health Statistics Unit.  
 Contact 619.692.6672. [https://www.sandiegocounty.gov/hhsa/programs/phs/community\\_health\\_statistics/](https://www.sandiegocounty.gov/hhsa/programs/phs/community_health_statistics/).  
 August, 2023.  
 LiveWellSD.org.







### Emergency Department Discharge Rates Among White Residents\* San Diego County, by Subregional Area, 2021

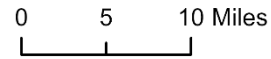


**Motor Vehicle Injuries**

- 178.1 - 266.8
- 266.9 - 355.5
- 355.6 - 444.2
- 444.3 - 532.8
- 532.9 - 621.5
- Data not shown

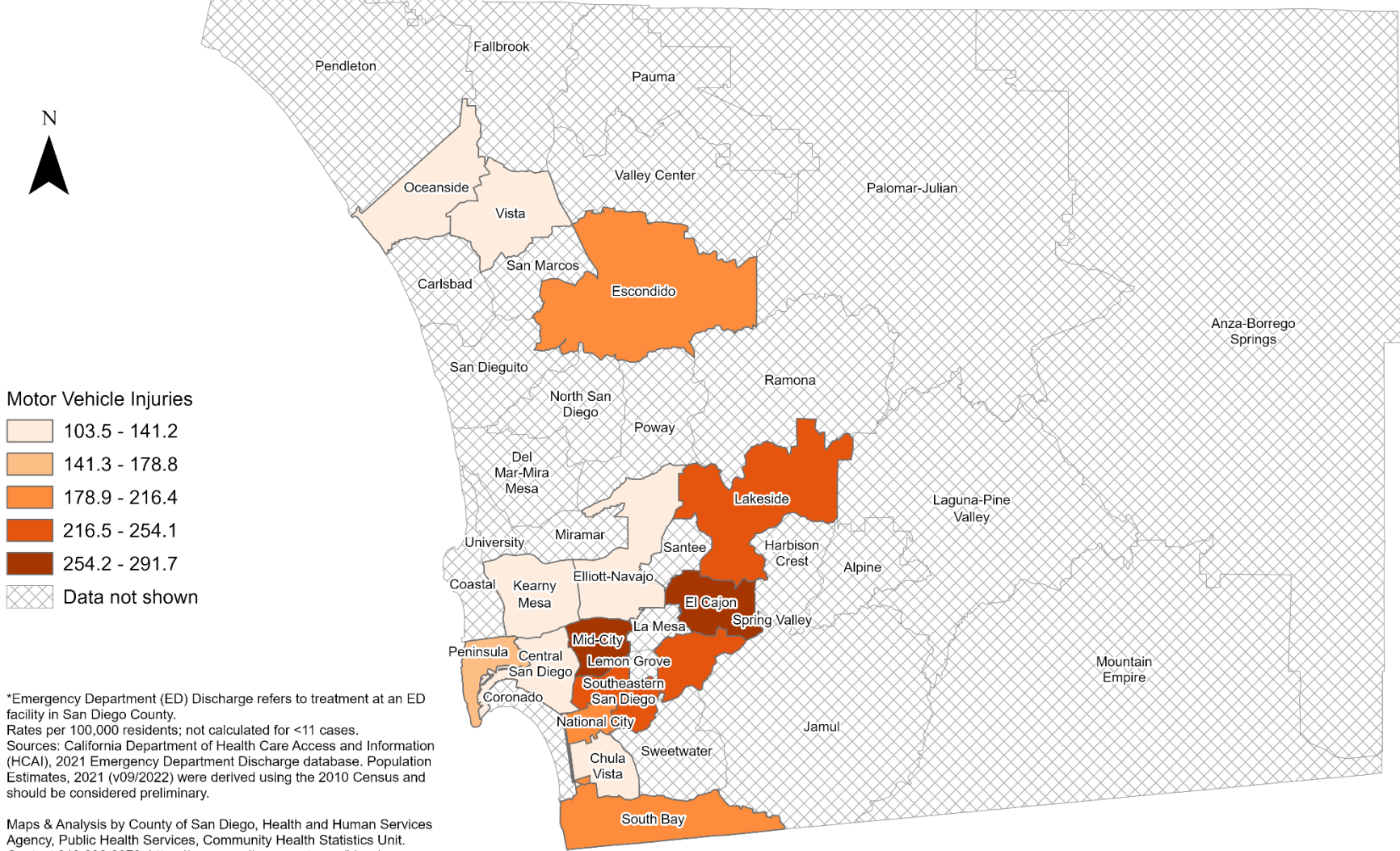
\*Emergency Department (ED) Discharge refers to treatment at an ED facility in San Diego County.  
Rates per 100,000 residents; not calculated for <11 cases.  
Sources: California Department of Health Care Access and Information (HCAI), 2021 Emergency Department Discharge database. Population Estimates, 2021 (v09/2022) were derived using the 2010 Census and should be considered preliminary.

Maps & Analysis by County of San Diego, Health and Human Services Agency, Public Health Services, Community Health Statistics Unit.  
Contact 619.692.6672. [https://www.sandiegocounty.gov/hhsa/programs/phs/community\\_health\\_statistics/](https://www.sandiegocounty.gov/hhsa/programs/phs/community_health_statistics/).  
August, 2023.  
LiveWellSD.org.





## Emergency Department Discharge Rates Among Residents, Ages 0-9\* San Diego County, by Subregional Area, 2021

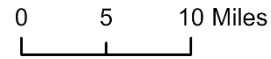


### Motor Vehicle Injuries

- 103.5 - 141.2
- 141.3 - 178.8
- 178.9 - 216.4
- 216.5 - 254.1
- 254.2 - 291.7
- Data not shown

\*Emergency Department (ED) Discharge refers to treatment at an ED facility in San Diego County.  
 Rates per 100,000 residents; not calculated for <11 cases.  
 Sources: California Department of Health Care Access and Information (HCAI), 2021 Emergency Department Discharge database. Population Estimates, 2021 (v09/2022) were derived using the 2010 Census and should be considered preliminary.

Maps & Analysis by County of San Diego, Health and Human Services Agency, Public Health Services, Community Health Statistics Unit.  
 Contact 619.692.6672. [https://www.sandiegocounty.gov/hhsa/programs/phs/community\\_health\\_statistics/](https://www.sandiegocounty.gov/hhsa/programs/phs/community_health_statistics/).  
 August, 2023.  
 LiveWellSD.org.

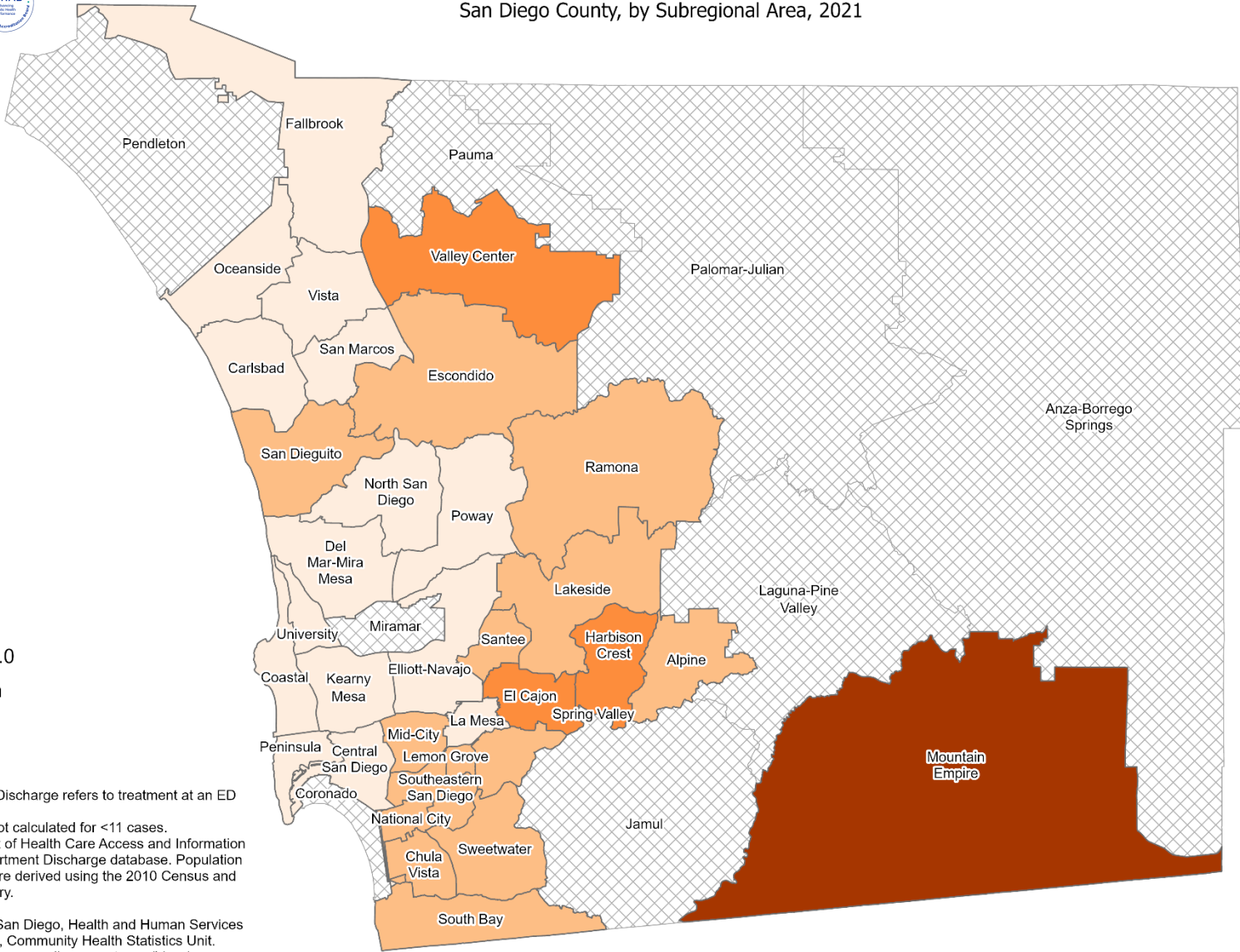
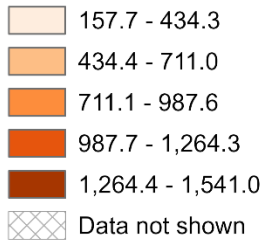




### Emergency Department Discharge Rates Among Residents, Ages 10-19\* San Diego County, by Subregional Area, 2021

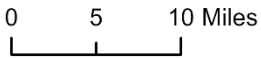


#### Motor Vehicle Injuries



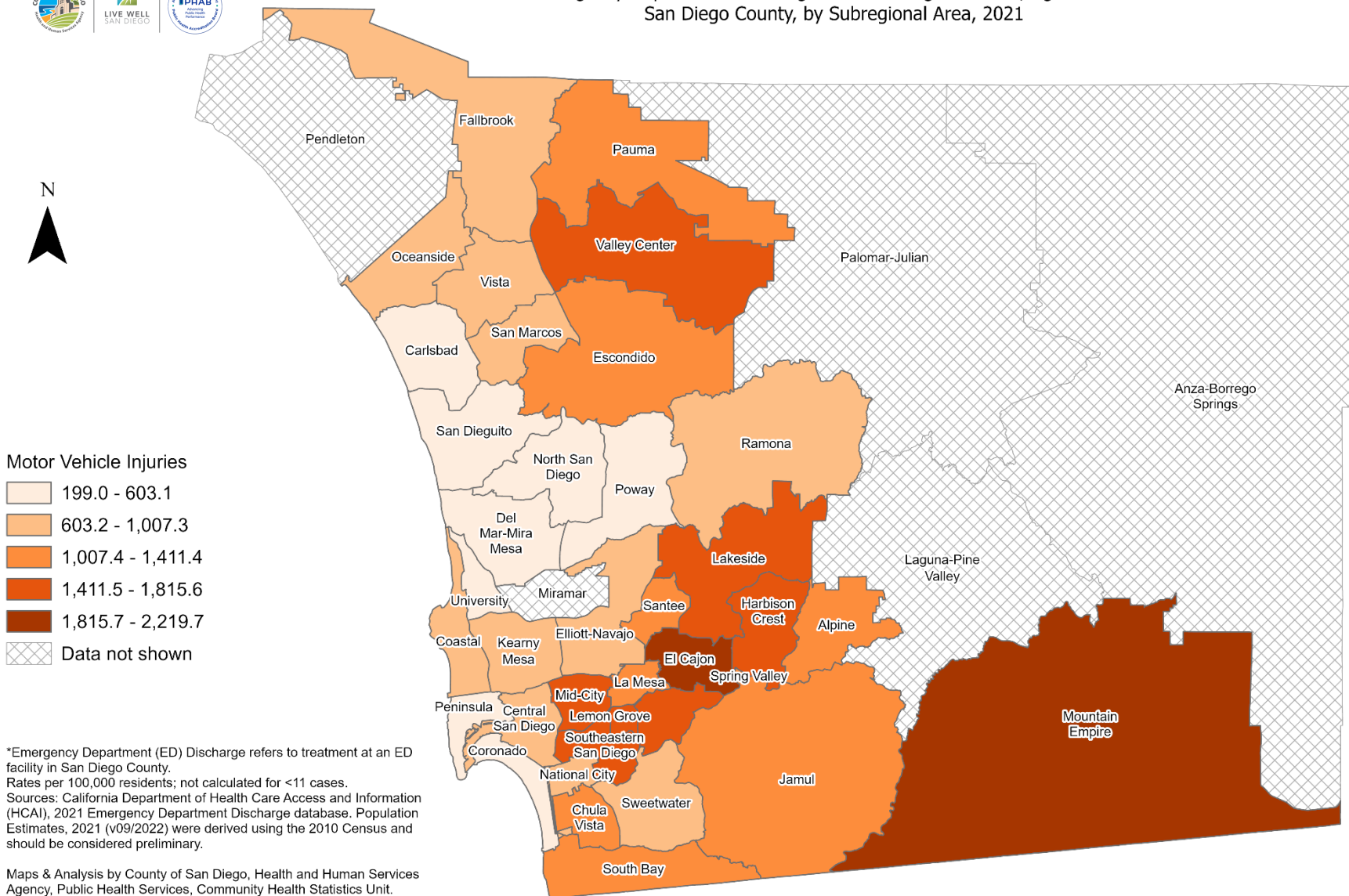
\*Emergency Department (ED) Discharge refers to treatment at an ED facility in San Diego County.  
Rates per 100,000 residents; not calculated for <11 cases.  
Sources: California Department of Health Care Access and Information (HCAI), 2021 Emergency Department Discharge database. Population Estimates, 2021 (v09/2022) were derived using the 2010 Census and should be considered preliminary.

Maps & Analysis by County of San Diego, Health and Human Services Agency, Public Health Services, Community Health Statistics Unit.  
Contact 619.692.6672. [https://www.sandiegocounty.gov/hhsa/programs/phs/community\\_health\\_statistics/](https://www.sandiegocounty.gov/hhsa/programs/phs/community_health_statistics/).  
August, 2023.  
LiveWellSD.org.



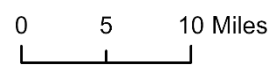


### Emergency Department Discharge Rates Among Residents, Ages 20-29\* San Diego County, by Subregional Area, 2021



\*Emergency Department (ED) Discharge refers to treatment at an ED facility in San Diego County.  
Rates per 100,000 residents; not calculated for <11 cases.  
Sources: California Department of Health Care Access and Information (HCAI), 2021 Emergency Department Discharge database. Population Estimates, 2021 (v09/2022) were derived using the 2010 Census and should be considered preliminary.

Maps & Analysis by County of San Diego, Health and Human Services Agency, Public Health Services, Community Health Statistics Unit.  
Contact 619.692.6672. [https://www.sandiegocounty.gov/hhsa/programs/phs/community\\_health\\_statistics/](https://www.sandiegocounty.gov/hhsa/programs/phs/community_health_statistics/).  
August, 2023.  
LiveWellSD.org.



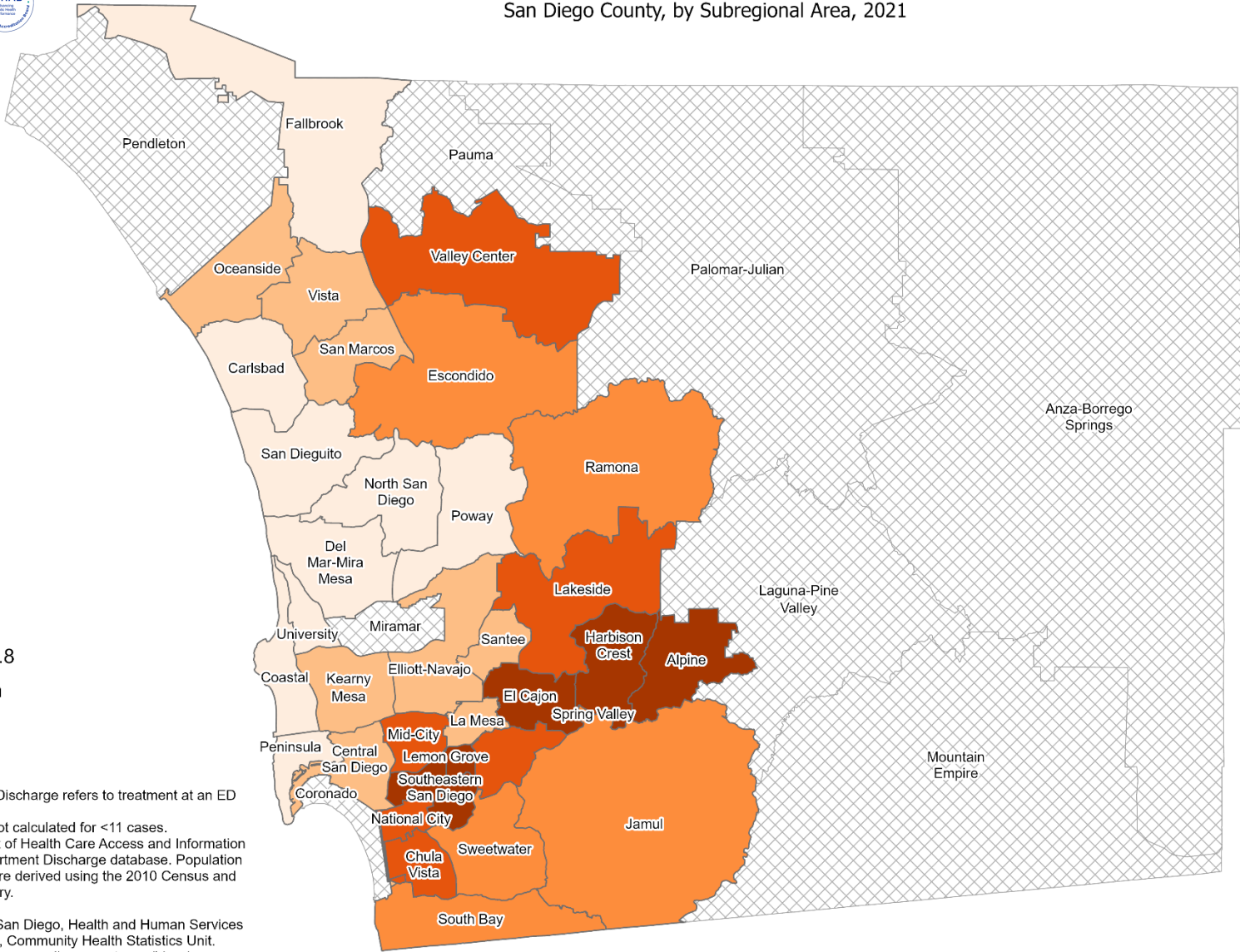


### Emergency Department Discharge Rates Among Residents, Ages 30-39\* San Diego County, by Subregional Area, 2021



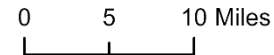
#### Motor Vehicle Injuries

- 231.1 - 485.5
- 485.6 - 739.8
- 739.9 - 994.1
- 994.2 - 1,248.5
- 1,248.6 - 1,502.8
- Data not shown



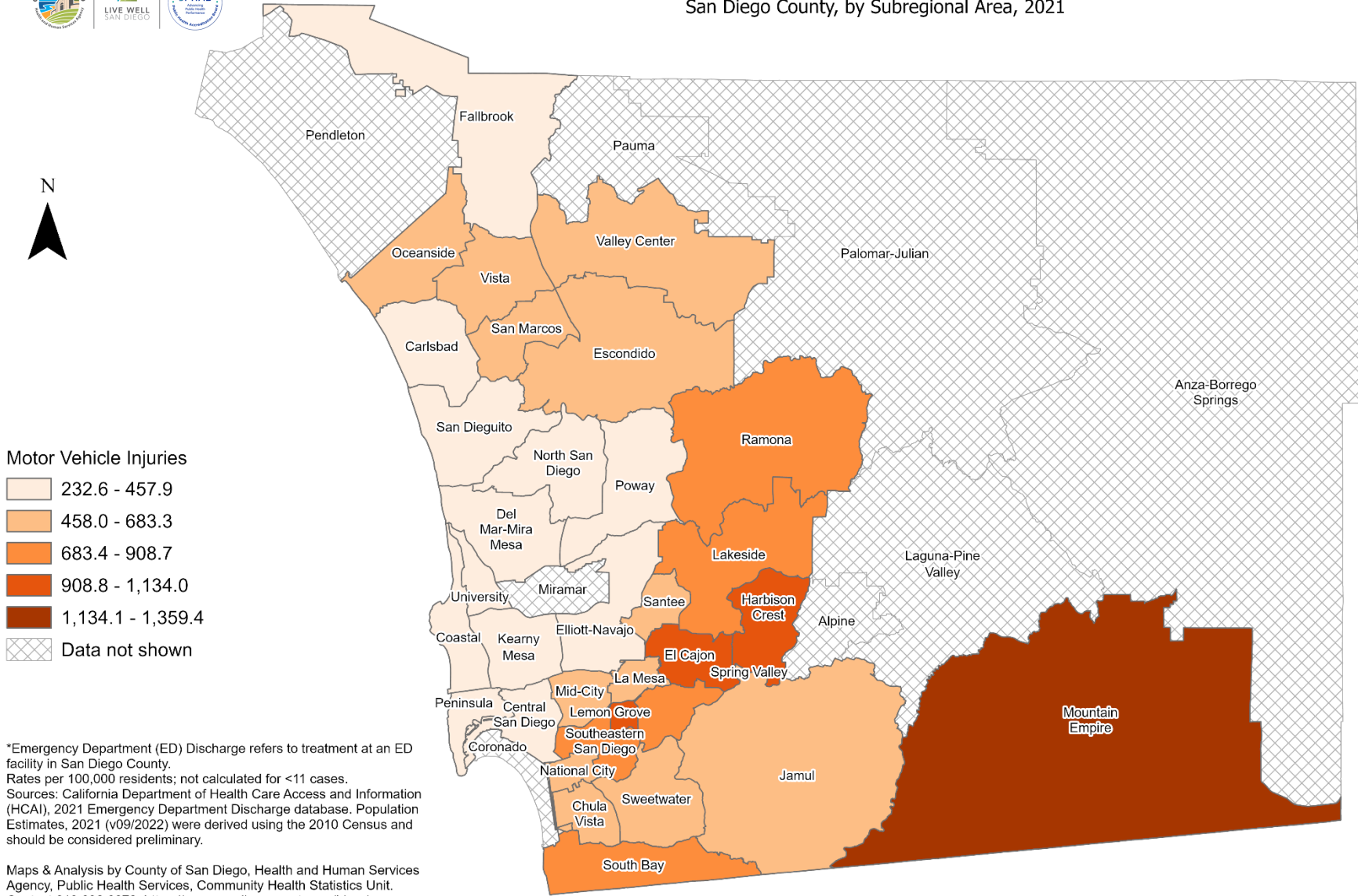
\*Emergency Department (ED) Discharge refers to treatment at an ED facility in San Diego County.  
Rates per 100,000 residents; not calculated for <11 cases.  
Sources: California Department of Health Care Access and Information (HCAI), 2021 Emergency Department Discharge database. Population Estimates, 2021 (v09/2022) were derived using the 2010 Census and should be considered preliminary.

Maps & Analysis by County of San Diego, Health and Human Services Agency, Public Health Services, Community Health Statistics Unit.  
Contact 619.692.6672. [https://www.sandiegocounty.gov/hhsa/programs/phs/community\\_health\\_statistics/](https://www.sandiegocounty.gov/hhsa/programs/phs/community_health_statistics/).  
August, 2023.  
LiveWellSD.org.





## Emergency Department Discharge Rates Among Residents, Ages 40-49\* San Diego County, by Subregional Area, 2021

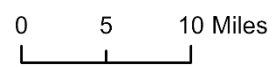


**Motor Vehicle Injuries**

- 232.6 - 457.9
- 458.0 - 683.3
- 683.4 - 908.7
- 908.8 - 1,134.0
- 1,134.1 - 1,359.4
- Data not shown

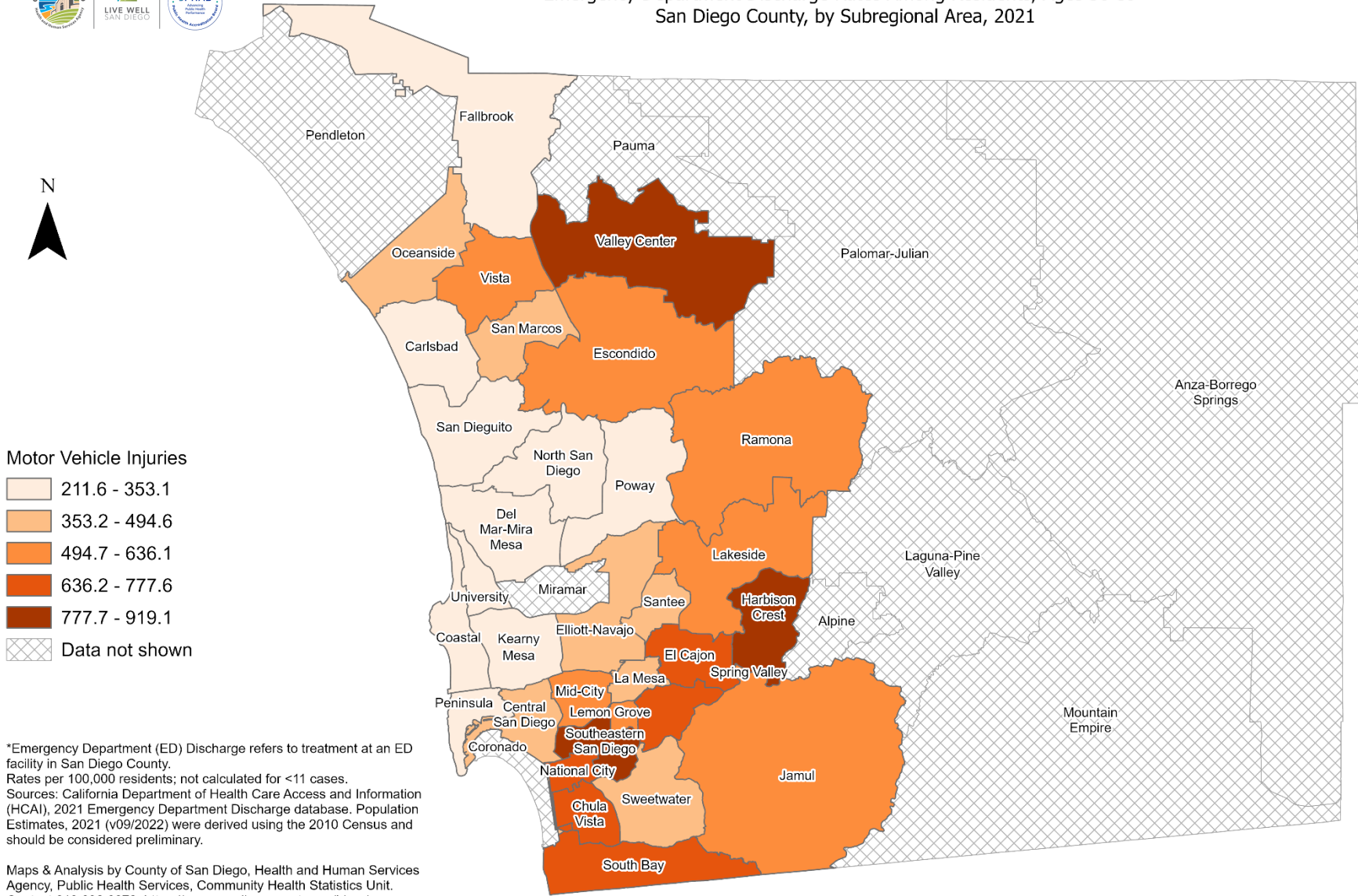
\*Emergency Department (ED) Discharge refers to treatment at an ED facility in San Diego County.  
 Rates per 100,000 residents; not calculated for <11 cases.  
 Sources: California Department of Health Care Access and Information (HCAI), 2021 Emergency Department Discharge database. Population Estimates, 2021 (v09/2022) were derived using the 2010 Census and should be considered preliminary.

Maps & Analysis by County of San Diego, Health and Human Services Agency, Public Health Services, Community Health Statistics Unit.  
 Contact 619.692.6672. [https://www.sandiegocounty.gov/hhsa/programs/phs/community\\_health\\_statistics/](https://www.sandiegocounty.gov/hhsa/programs/phs/community_health_statistics/).  
 August, 2023.  
 LiveWellSD.org.





### Emergency Department Discharge Rates Among Residents, Ages 50-59\* San Diego County, by Subregional Area, 2021

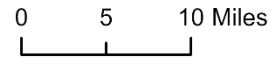


**Motor Vehicle Injuries**

- 211.6 - 353.1
- 353.2 - 494.6
- 494.7 - 636.1
- 636.2 - 777.6
- 777.7 - 919.1
- Data not shown

\*Emergency Department (ED) Discharge refers to treatment at an ED facility in San Diego County.  
Rates per 100,000 residents; not calculated for <11 cases.  
Sources: California Department of Health Care Access and Information (HCAI), 2021 Emergency Department Discharge database. Population Estimates, 2021 (v09/2022) were derived using the 2010 Census and should be considered preliminary.

Maps & Analysis by County of San Diego, Health and Human Services Agency, Public Health Services, Community Health Statistics Unit.  
Contact 619.692.6672. [https://www.sandiegocounty.gov/hhsa/programs/phs/community\\_health\\_statistics/](https://www.sandiegocounty.gov/hhsa/programs/phs/community_health_statistics/).  
August, 2023.  
LiveWellSD.org.

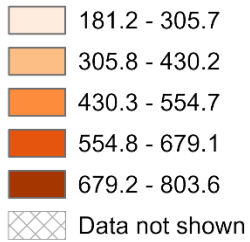




### Emergency Department Discharge Rates Among Residents, Ages 60-69\* San Diego County, by Subregional Area, 2021

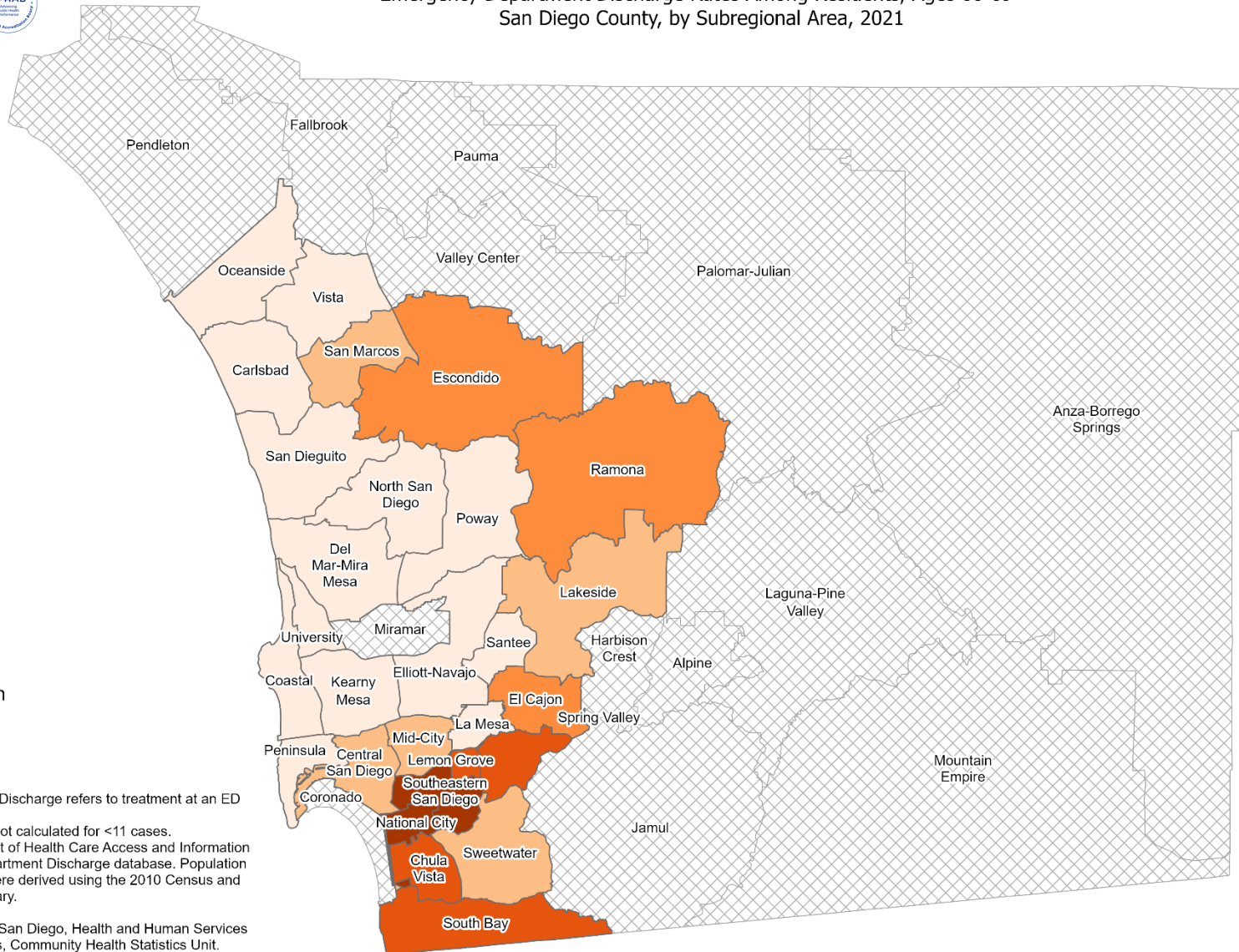


#### Motor Vehicle Injuries



\*Emergency Department (ED) Discharge refers to treatment at an ED facility in San Diego County.  
Rates per 100,000 residents; not calculated for <11 cases.  
Sources: California Department of Health Care Access and Information (HCAI), 2021 Emergency Department Discharge database. Population Estimates, 2021 (v09/2022) were derived using the 2010 Census and should be considered preliminary.

Maps & Analysis by County of San Diego, Health and Human Services Agency, Public Health Services, Community Health Statistics Unit.  
Contact 619.692.6672. [https://www.sandiegocounty.gov/hhsa/programs/phs/community\\_health\\_statistics/](https://www.sandiegocounty.gov/hhsa/programs/phs/community_health_statistics/).  
August, 2023.  
LiveWellSD.org.



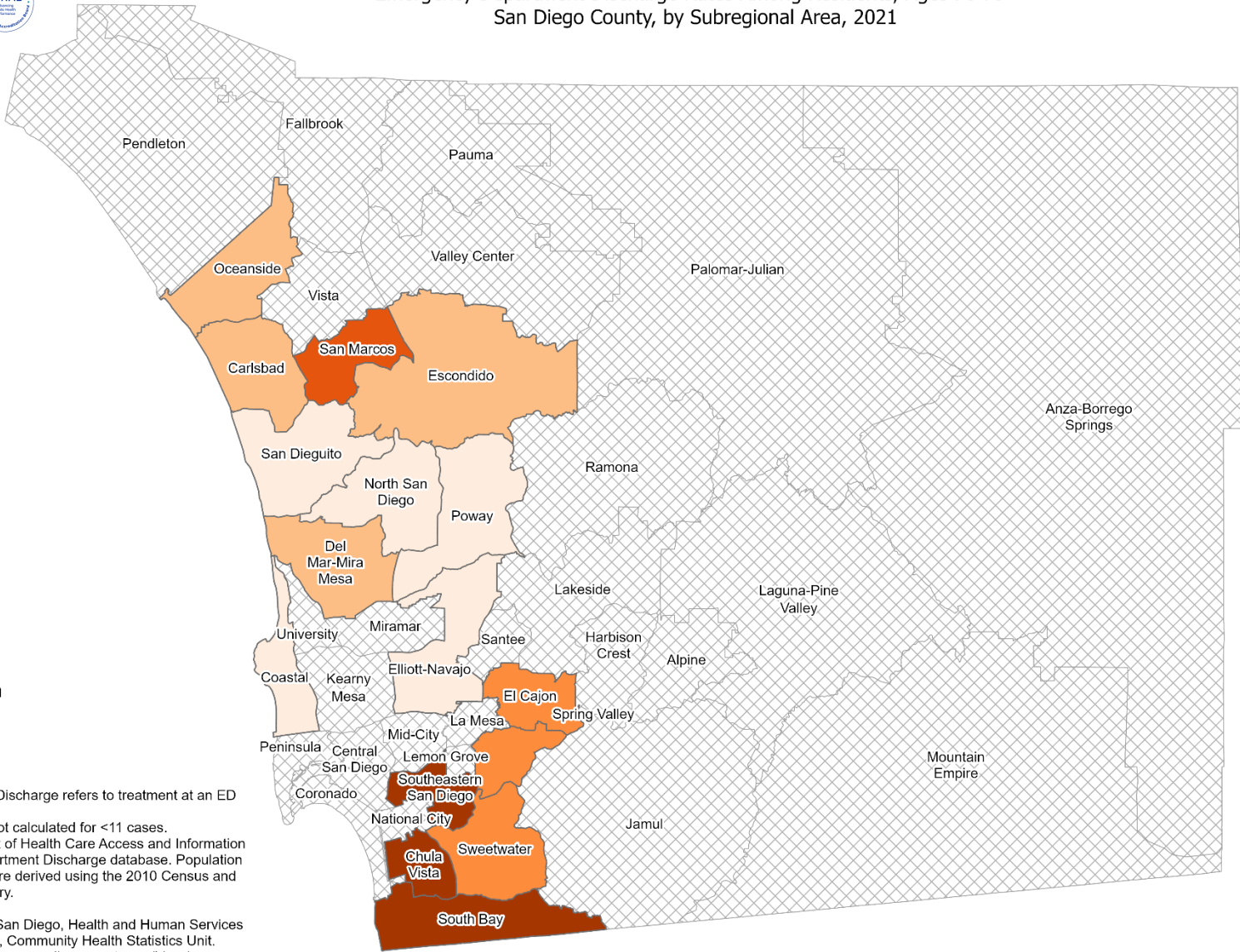
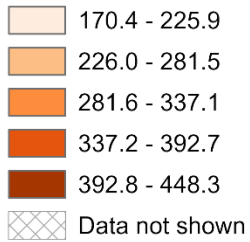




### Emergency Department Discharge Rates Among Residents, Ages 70-79\* San Diego County, by Subregional Area, 2021



#### Motor Vehicle Injuries



\*Emergency Department (ED) Discharge refers to treatment at an ED facility in San Diego County.  
Rates per 100,000 residents; not calculated for <11 cases.  
Sources: California Department of Health Care Access and Information (HCAI), 2021 Emergency Department Discharge database. Population Estimates, 2021 (v09/2022) were derived using the 2010 Census and should be considered preliminary.

Maps & Analysis by County of San Diego, Health and Human Services Agency, Public Health Services, Community Health Statistics Unit.  
Contact 619.692.6672. [https://www.sandiegocounty.gov/hhsa/programs/phs/community\\_health\\_statistics/](https://www.sandiegocounty.gov/hhsa/programs/phs/community_health_statistics/).  
August, 2023.  
LiveWellSD.org.





### Emergency Department Discharge Rates Among Residents, Ages 80+\* San Diego County, by Subregional Area, 2021

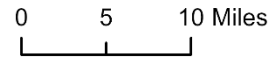
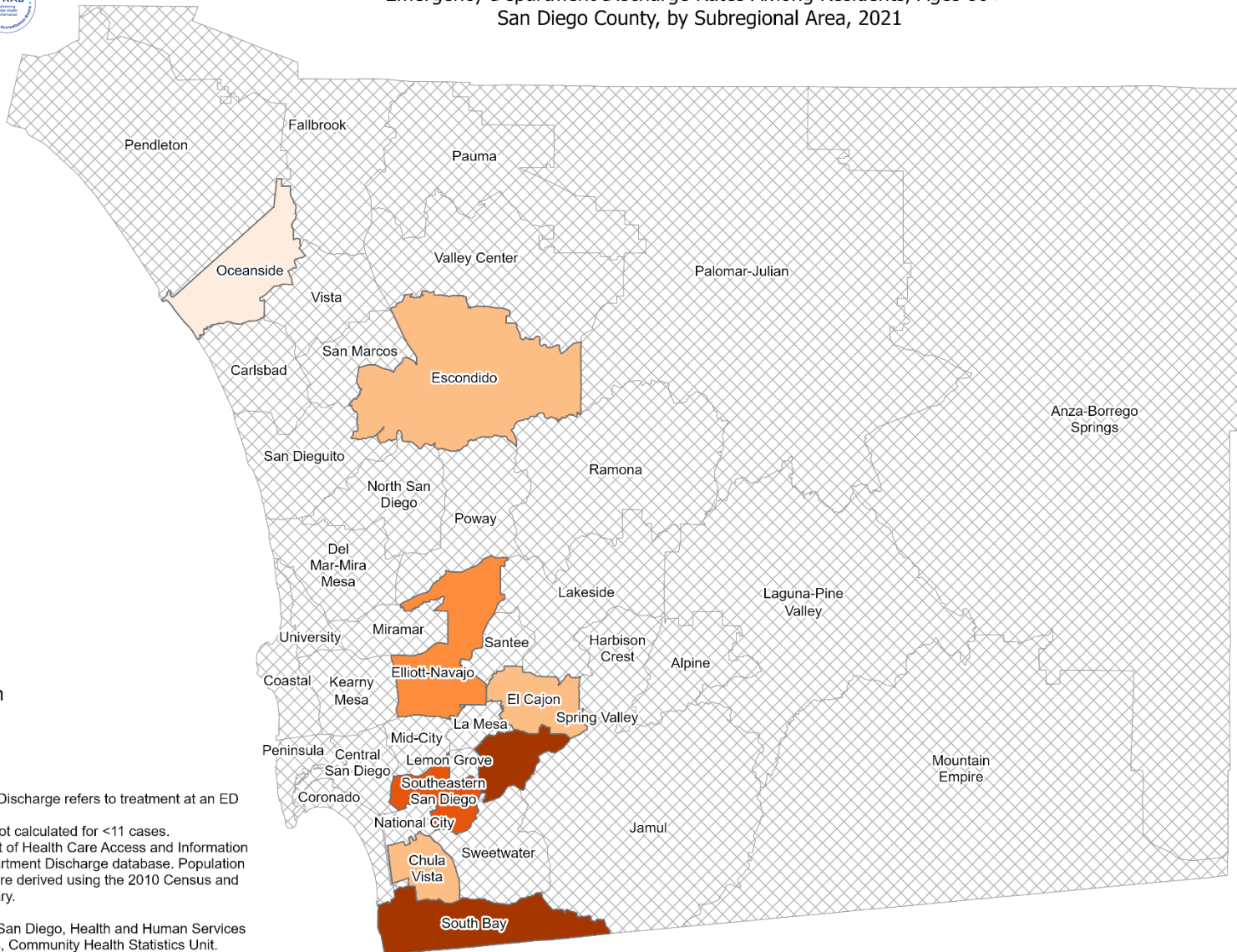


#### Motor Vehicle Injuries

- 204.9 - 242.8
- 242.9 - 280.8
- 280.9 - 318.8
- 318.9 - 356.7
- 356.8 - 394.7
- Data not shown

\*Emergency Department (ED) Discharge refers to treatment at an ED facility in San Diego County.  
Rates per 100,000 residents; not calculated for <11 cases.  
Sources: California Department of Health Care Access and Information (HCAI), 2021 Emergency Department Discharge database. Population Estimates, 2021 (v09/2022) were derived using the 2010 Census and should be considered preliminary.

Maps & Analysis by County of San Diego, Health and Human Services Agency, Public Health Services, Community Health Statistics Unit.  
Contact 619.692.6672. [https://www.sandiegocounty.gov/hhsa/programs/phs/community\\_health\\_statistics/](https://www.sandiegocounty.gov/hhsa/programs/phs/community_health_statistics/).  
August, 2023.  
LiveWellSD.org.



# SECTION 4



## In-Patient Treatment (IPT) Rates Among San Diego County Residents by Demographics, 2021:



- Total Rate
  - Race/Ethnicity
    - Asian/Pacific Islander (API)
    - Black
    - Hispanic
    - White
  - Age Group
    - 0-9 Years
    - 10-19 Years
    - 20-29 Years
    - 30-39 Years
    - 40-49 Years
    - 50-59 Years
    - 60-69 Years
    - 70-79 Years
    - 80+ Years

**No SRA-level rate data  
available for this section.**