



2021 MAP ATLAS

Overall Cancer

AUGUST 2023



County of San Diego | Health and Human Services Agency | Public Health Services | Community Health Statistics Unit



Data Sources

Death* is based on underlying cause of death among San Diego County residents. Rates calculated per 100,000 residents. Rates not calculated for < 11 cases. Maps not produced for conditions/outcomes with no SRA-level rates. Some sections may have no maps.

Sources: California Department of Public Health, Center for Health Statistics, Office of Health Information and Research, Vital Records Business Intelligence System (VRBIS), 2021. ***The COVID-19 pandemic was associated with increases in all-cause mortality. COVID-19 deaths have affected the patterns of mortality.*** SANDAG: San Diego Association of Governments (SANDAG) Population Estimates, 2021 (v09/2022). ***Population estimates for 2021 were derived using the 2010 Census and data should be considered preliminary.***

*For substance/drug overdoses, death rate is based on the multiple/contributing cause of death among San Diego County residents.

Hospitalization refers to treatment at a general acute care facility in San Diego County. Rates calculated per 100,000 residents. Rates not calculated for < 11 cases. Maps not produced for conditions/outcomes with no SRA-level rates. Some sections may have no maps.

Sources: California Department of Health Care Access and Information (HCAI), Patient Discharge Database, 2021. San Diego Association of Governments (SANDAG) Population Estimates, 2021 (v09/2022). ***Population estimates for 2021 were derived using the 2010 Census and data should be considered preliminary.***

Emergency Department (ED) Discharge refers to treatment at an ED facility in San Diego County.

Rates calculated per 100,000 residents. Rates not calculated for < 11 cases. Maps not produced for conditions/outcomes with no SRA-level rates. Some sections may have no maps.

Sources: California Department of Health Care Access and Information (HCAI), Emergency Department Discharge Database, 2021. San Diego Association of Governments (SANDAG) Population Estimates, 2021 (v09/2022). ***Population estimates for 2021 were derived using the 2010 Census and data should be considered preliminary.***

In-Patient Treatment (IPT) refers to treatment at a psychiatric care or chemical rehabilitation facility in San Diego County. Rates calculated per 100,000 residents. Rates not calculated for < 11 cases. Maps not produced for conditions/outcomes with no SRA-level rates. Some sections may have no maps.

Sources: California Department of Health Care Access and Information (HCAI), Patient Discharge Database, 2021. San Diego Association of Governments (SANDAG) Population Estimates, 2021 (v09/2022). ***Population estimates for 2021 were derived using the 2010 Census and data should be considered preliminary.***

Maps & Analysis by County of San Diego, Health and Human Services Agency, Public Health Services, Community Health Statistics Unit. Contact 619.692.6672. August 2023.

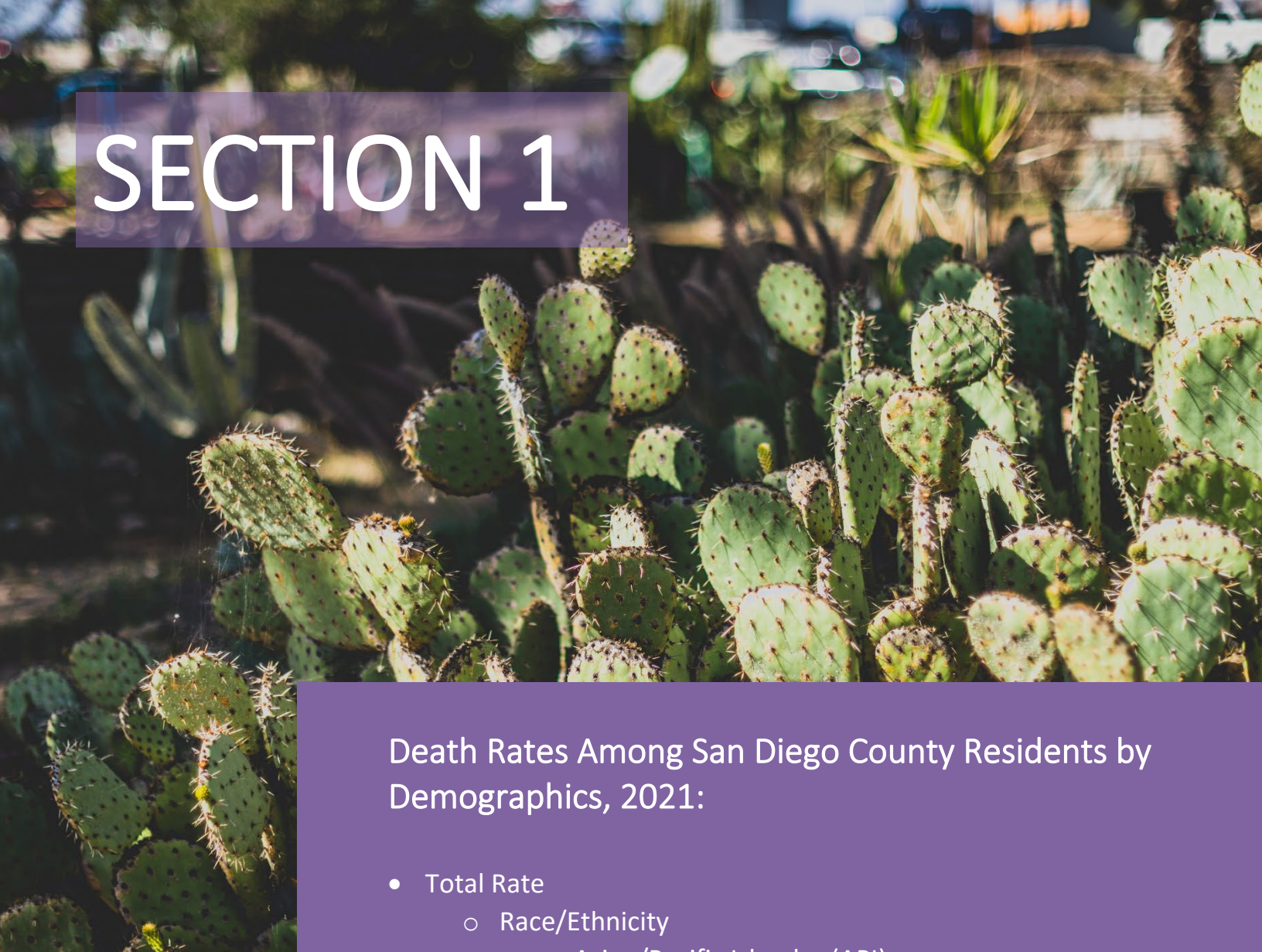
https://www.sandiegocounty.gov/hhsa/programs/phs/community_health_statistics/LiveWellSD.org.

For more detailed explanation of geography, methods, and sources, please refer to CHSU's [2020 Community Profiles Data Guide and Data Dictionary Dashboards](#).

Table of Contents

Section 1: Deaths	1
Section 2: Hospitalizations	12
Section 3: Emergency Department (ED) Discharges	25
Section 4: In-Patient Treatments (IPT).....	35

SECTION 1



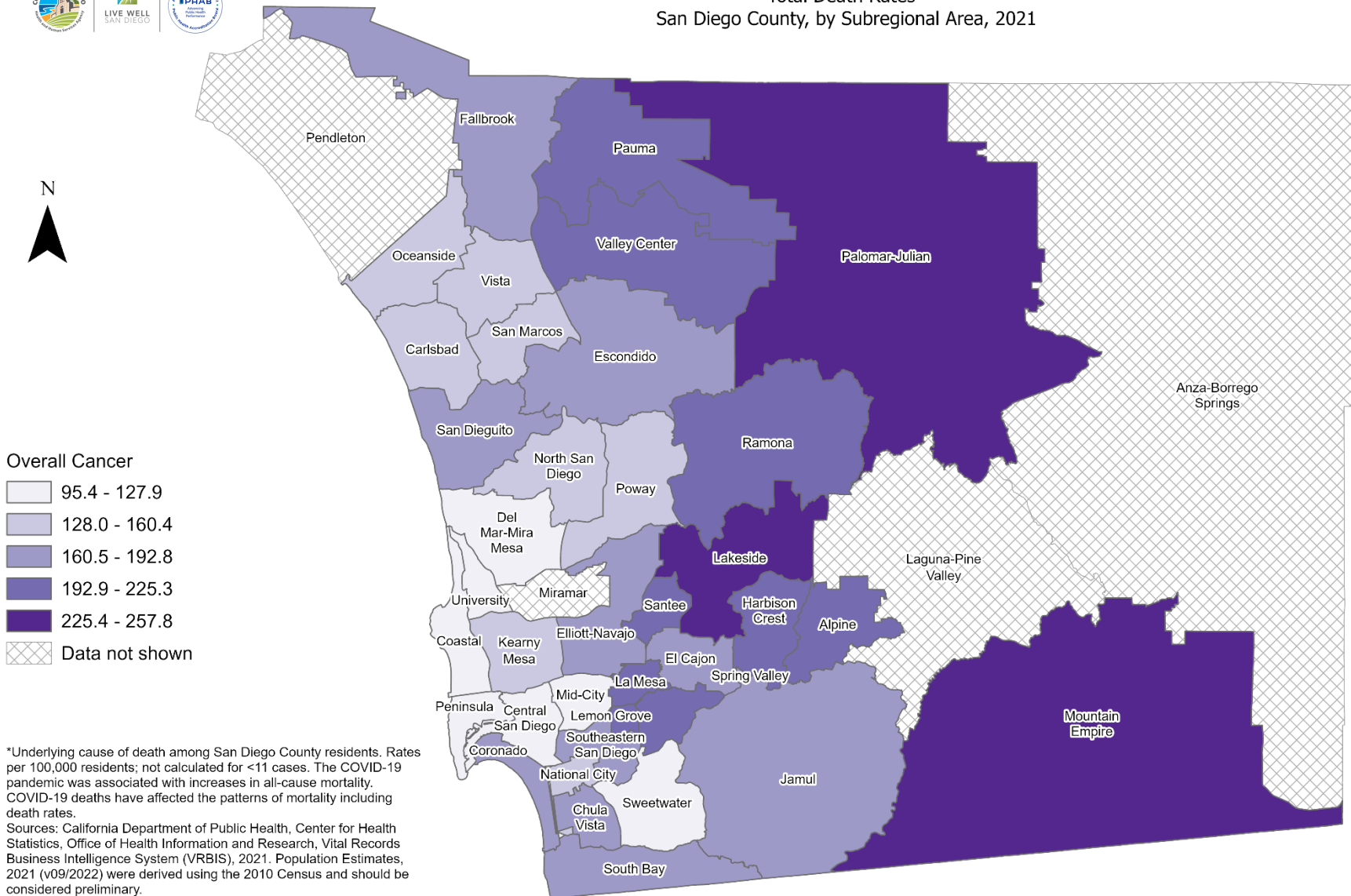
Death Rates Among San Diego County Residents by Demographics, 2021:

- Total Rate
 - Race/Ethnicity
 - Asian/Pacific Islander (API)
 - Black
 - Hispanic
 - White
 - Age Group
 - 0-9 Years
 - 10-19 Years
 - 20-29 Years
 - 30-39 Years
 - 40-49 Years
 - 50-59 Years
 - 60-69 Years
 - 70-79 Years
 - 80+ Years



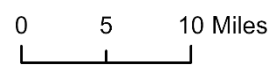


Total Death Rates* San Diego County, by Subregional Area, 2021



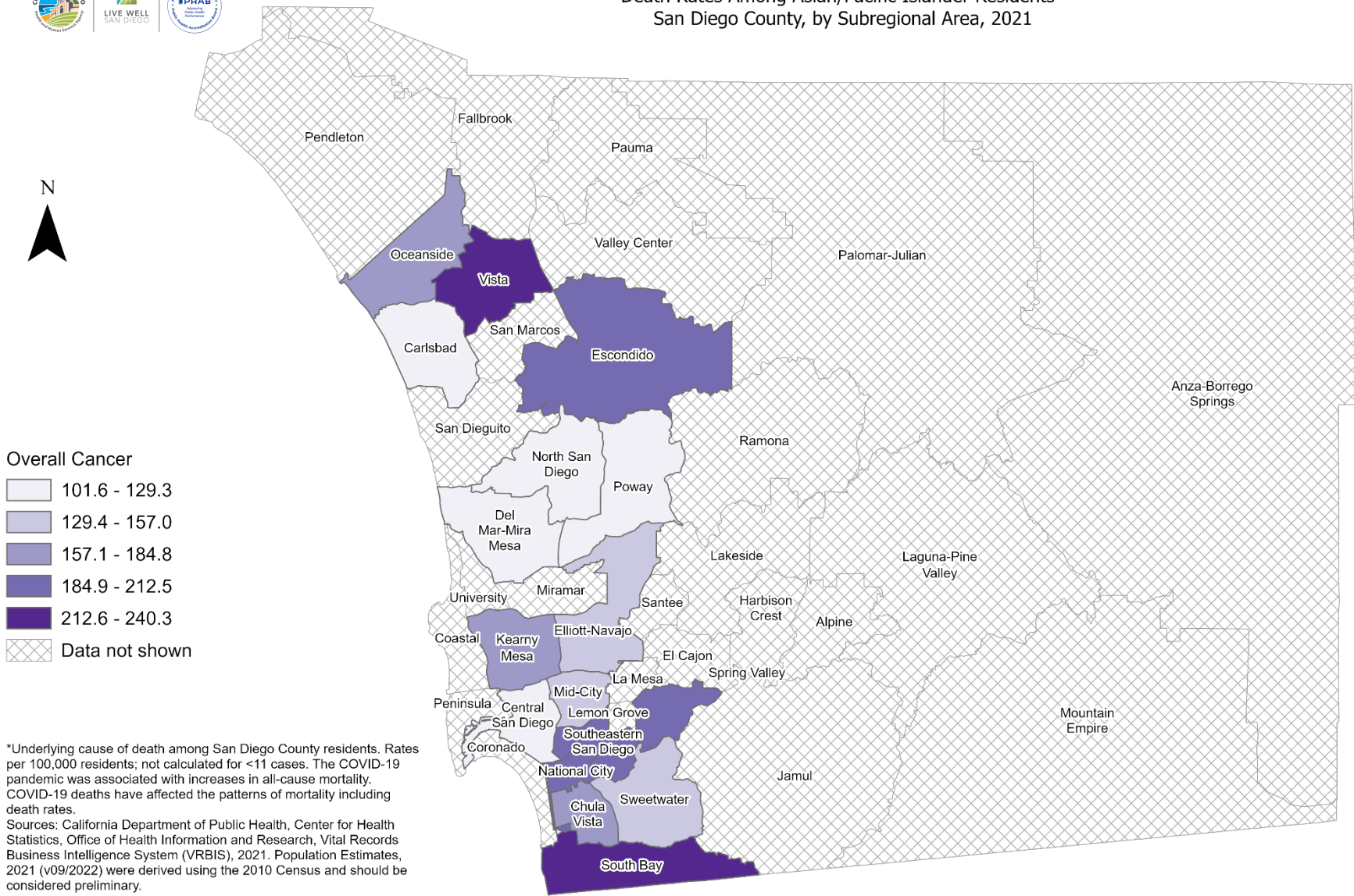
*Underlying cause of death among San Diego County residents. Rates per 100,000 residents; not calculated for <11 cases. The COVID-19 pandemic was associated with increases in all-cause mortality. COVID-19 deaths have affected the patterns of mortality including death rates.
Sources: California Department of Public Health, Center for Health Statistics, Office of Health Information and Research, Vital Records Business Intelligence System (VRBIS), 2021. Population Estimates, 2021 (v09/2022) were derived using the 2010 Census and should be considered preliminary.

Maps & Analysis by County of San Diego, Health and Human Services Agency, Public Health Services, Community Health Statistics Unit.
Contact 619.692.6672.
https://www.sandiegocounty.gov/hhsa/programs/phs/community_health_statistics/
August, 2023.
LiveWellSD.org.



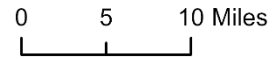


Death Rates Among Asian/Pacific Islander Residents* San Diego County, by Subregional Area, 2021



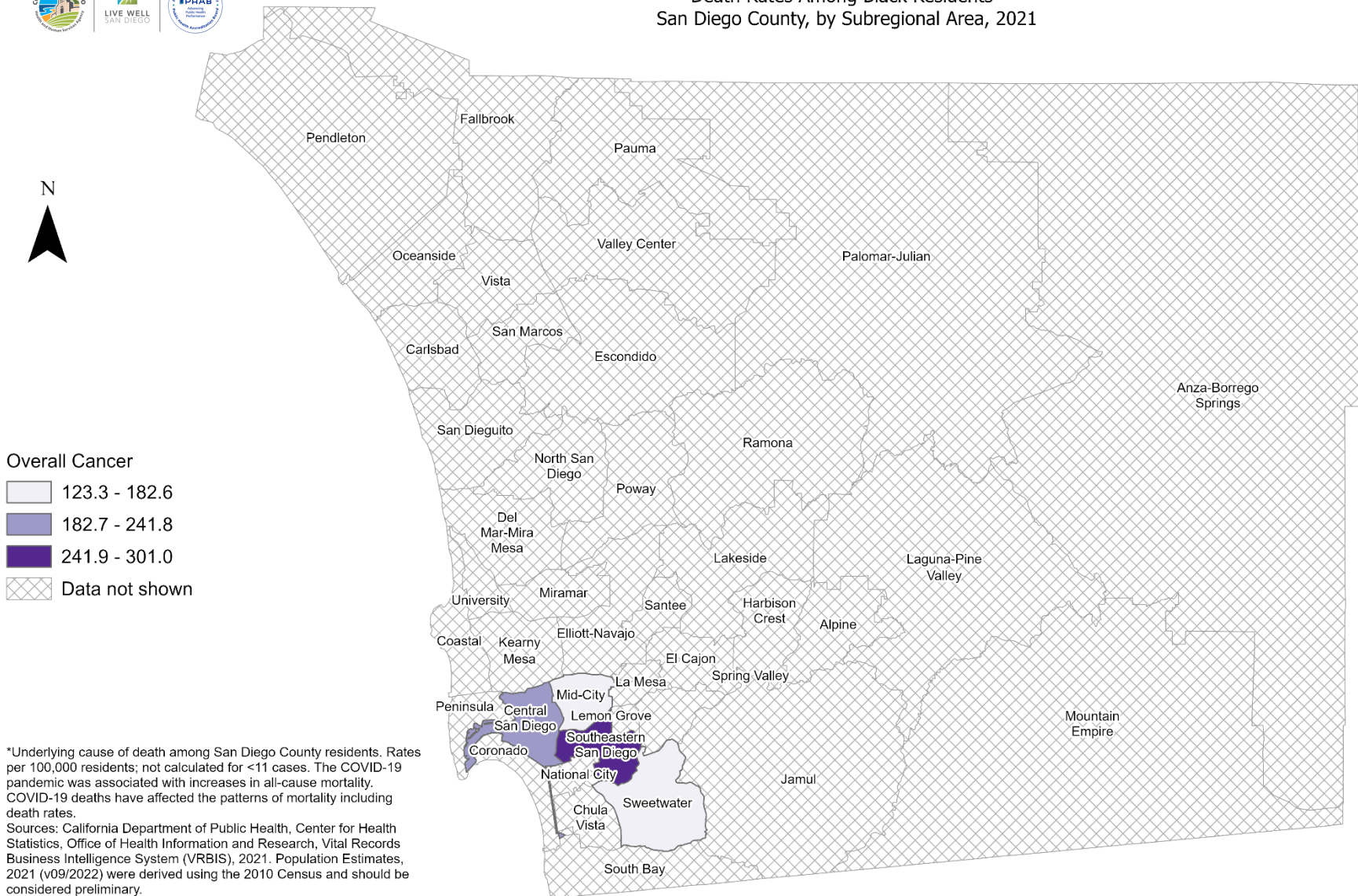
*Underlying cause of death among San Diego County residents. Rates per 100,000 residents; not calculated for <11 cases. The COVID-19 pandemic was associated with increases in all-cause mortality. COVID-19 deaths have affected the patterns of mortality including death rates.
Sources: California Department of Public Health, Center for Health Statistics, Office of Health Information and Research, Vital Records Business Intelligence System (VRBIS), 2021. Population Estimates, 2021 (v09/2022) were derived using the 2010 Census and should be considered preliminary.

Maps & Analysis by County of San Diego, Health and Human Services Agency, Public Health Services, Community Health Statistics Unit.
Contact 619.692.6672.
https://www.sandiegocounty.gov/hhsa/programs/phs/community_health_statistics/
August, 2023.
LiveWellSD.org.



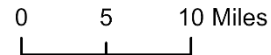


Death Rates Among Black Residents* San Diego County, by Subregional Area, 2021



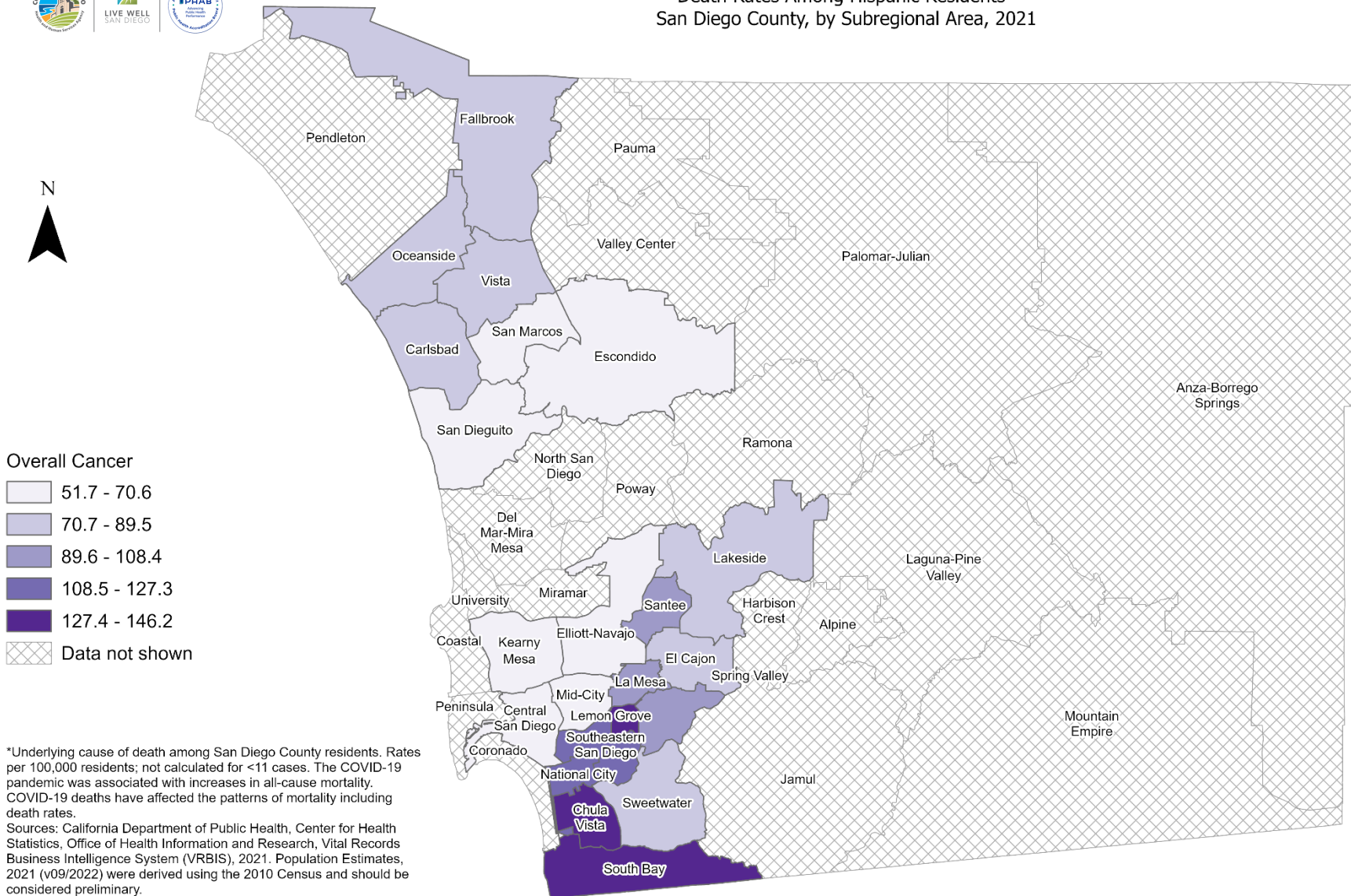
*Underlying cause of death among San Diego County residents. Rates per 100,000 residents; not calculated for <11 cases. The COVID-19 pandemic was associated with increases in all-cause mortality. COVID-19 deaths have affected the patterns of mortality including death rates.
Sources: California Department of Public Health, Center for Health Statistics, Office of Health Information and Research, Vital Records Business Intelligence System (VRBIS), 2021. Population Estimates, 2021 (v09/2022) were derived using the 2010 Census and should be considered preliminary.

Maps & Analysis by County of San Diego, Health and Human Services Agency, Public Health Services, Community Health Statistics Unit.
Contact 619.692.6672.
https://www.sandiegocounty.gov/hhsa/programs/phs/community_health_statistics/
August, 2023.
LiveWellSD.org.



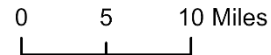


Death Rates Among Hispanic Residents* San Diego County, by Subregional Area, 2021



*Underlying cause of death among San Diego County residents. Rates per 100,000 residents; not calculated for <11 cases. The COVID-19 pandemic was associated with increases in all-cause mortality. COVID-19 deaths have affected the patterns of mortality including death rates.
Sources: California Department of Public Health, Center for Health Statistics, Office of Health Information and Research, Vital Records Business Intelligence System (VRBIS), 2021. Population Estimates, 2021 (v09/2022) were derived using the 2010 Census and should be considered preliminary.

Maps & Analysis by County of San Diego, Health and Human Services Agency, Public Health Services, Community Health Statistics Unit.
Contact 619.692.6672.
https://www.sandiegocounty.gov/hhsa/programs/phs/community_health_statistics/
August, 2023.
LiveWellSD.org.









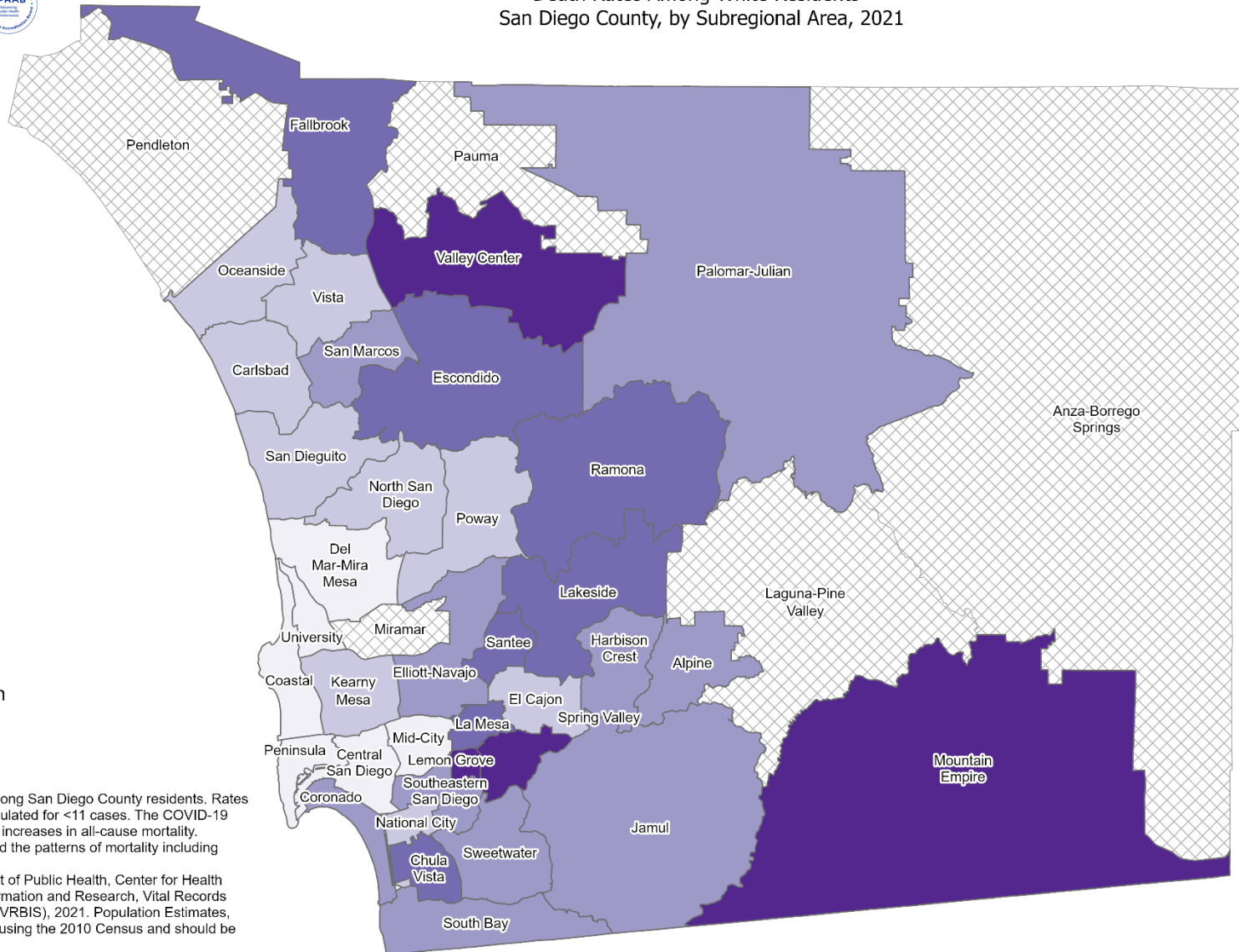


Death Rates Among White Residents* San Diego County, by Subregional Area, 2021



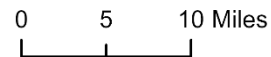
Overall Cancer

-  129.5 - 176.8
-  176.9 - 224.1
-  224.2 - 271.4
-  271.5 - 318.8
-  318.9 - 366.1
-  Data not shown



*Underlying cause of death among San Diego County residents. Rates per 100,000 residents; not calculated for <11 cases. The COVID-19 pandemic was associated with increases in all-cause mortality. COVID-19 deaths have affected the patterns of mortality including death rates.
Sources: California Department of Public Health, Center for Health Statistics, Office of Health Information and Research, Vital Records Business Intelligence System (VRBIS), 2021. Population Estimates, 2021 (v09/2022) were derived using the 2010 Census and should be considered preliminary.

Maps & Analysis by County of San Diego, Health and Human Services Agency, Public Health Services, Community Health Statistics Unit.
Contact 619.692.6672.
https://www.sandiegocounty.gov/hhsa/programs/phs/community_health_statistics/
August, 2023.
LiveWellSD.org.



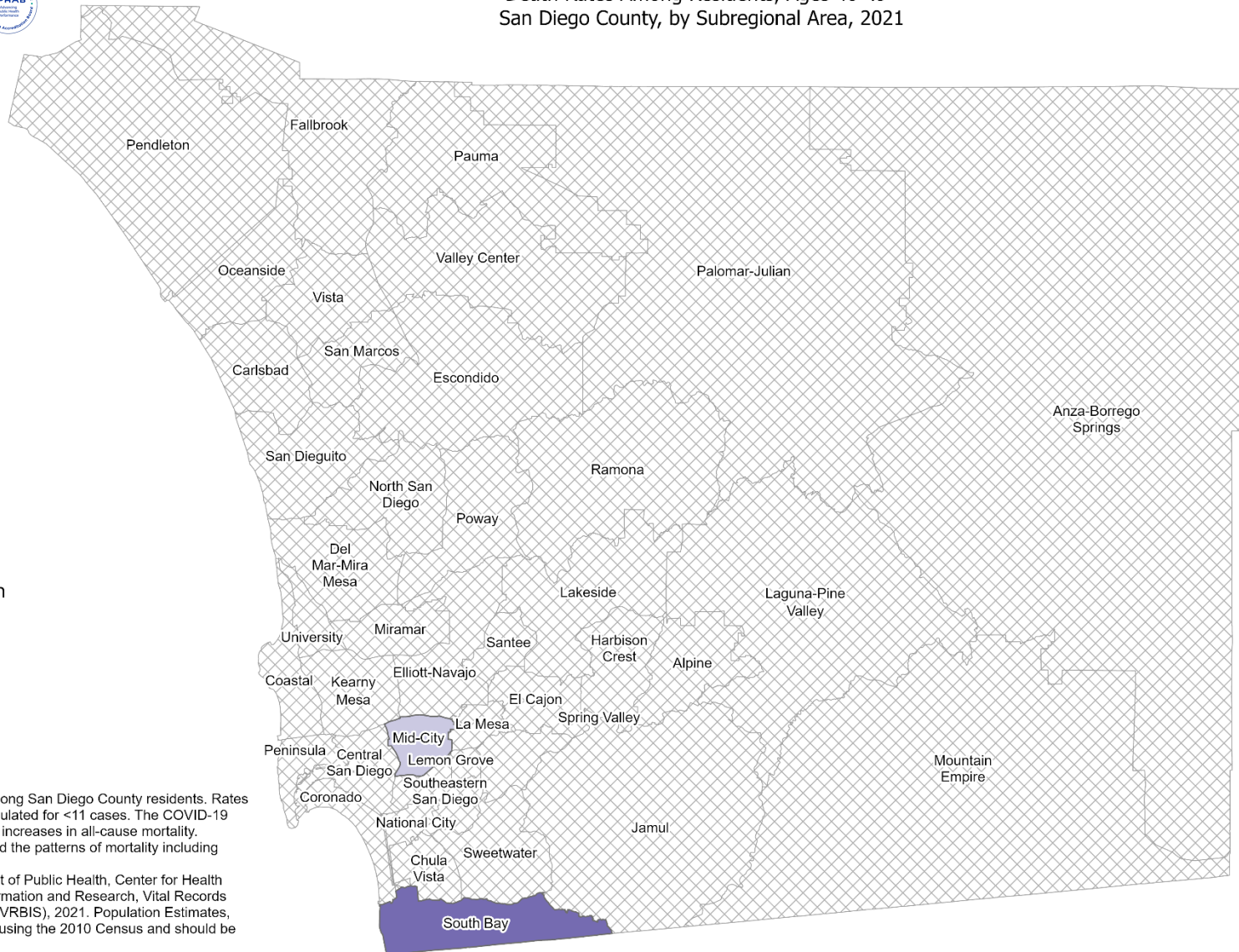


Death Rates Among Residents, Ages 40-49* San Diego County, by Subregional Area, 2021



Overall Cancer

- 49.8 - 60.7
- 60.8 - 71.6
- Data not shown



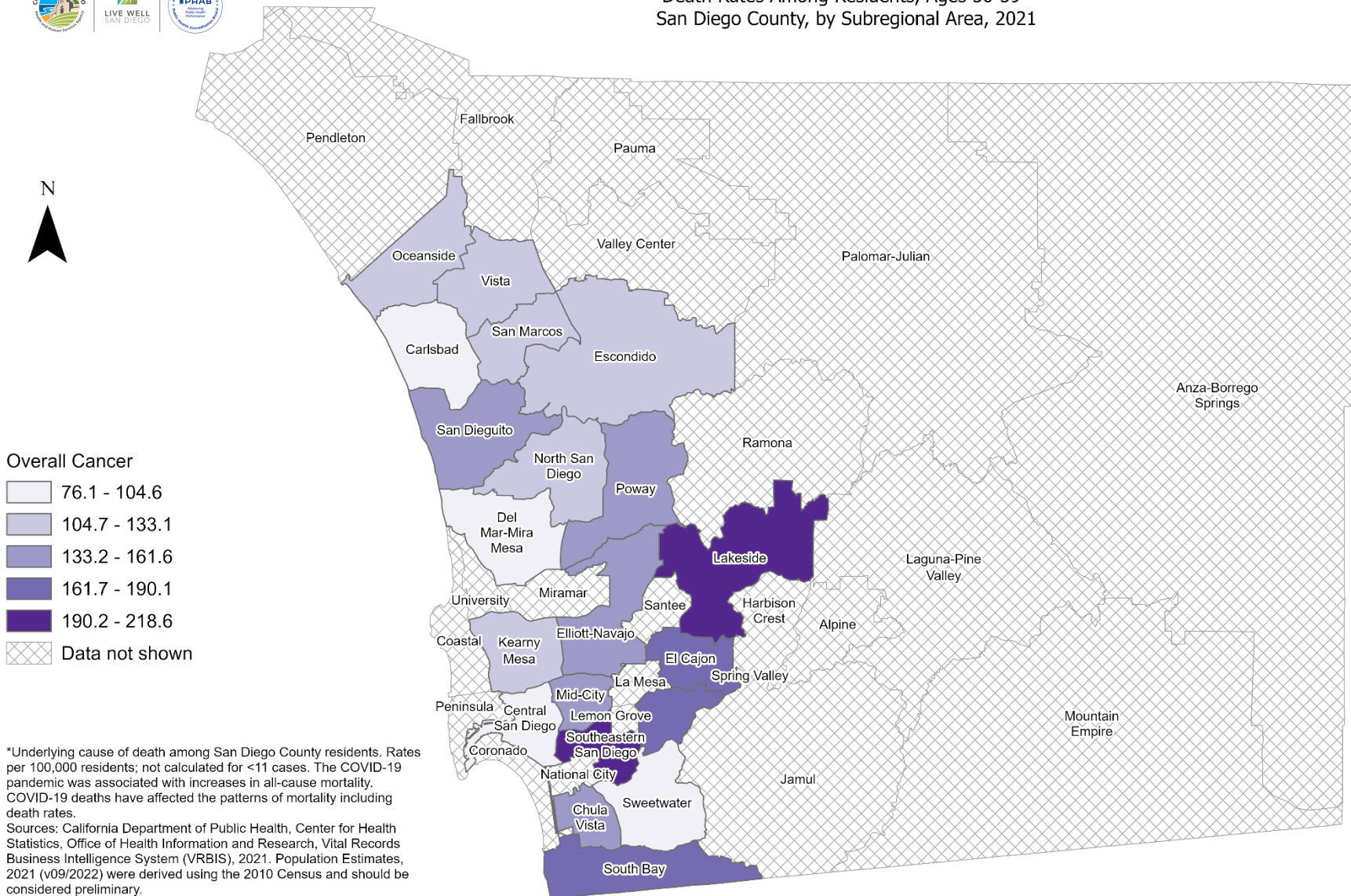
*Underlying cause of death among San Diego County residents. Rates per 100,000 residents; not calculated for <11 cases. The COVID-19 pandemic was associated with increases in all-cause mortality. COVID-19 deaths have affected the patterns of mortality including death rates.
Sources: California Department of Public Health, Center for Health Statistics, Office of Health Information and Research, Vital Records Business Intelligence System (VRBIS), 2021. Population Estimates, 2021 (v09/2022) were derived using the 2010 Census and should be considered preliminary.

Maps & Analysis by County of San Diego, Health and Human Services Agency, Public Health Services, Community Health Statistics Unit.
Contact 619.692.6672.
https://www.sandiegocounty.gov/hhsa/programs/phs/community_health_statistics/
August, 2023.
LiveWellSD.org.





Death Rates Among Residents, Ages 50-59* San Diego County, by Subregional Area, 2021

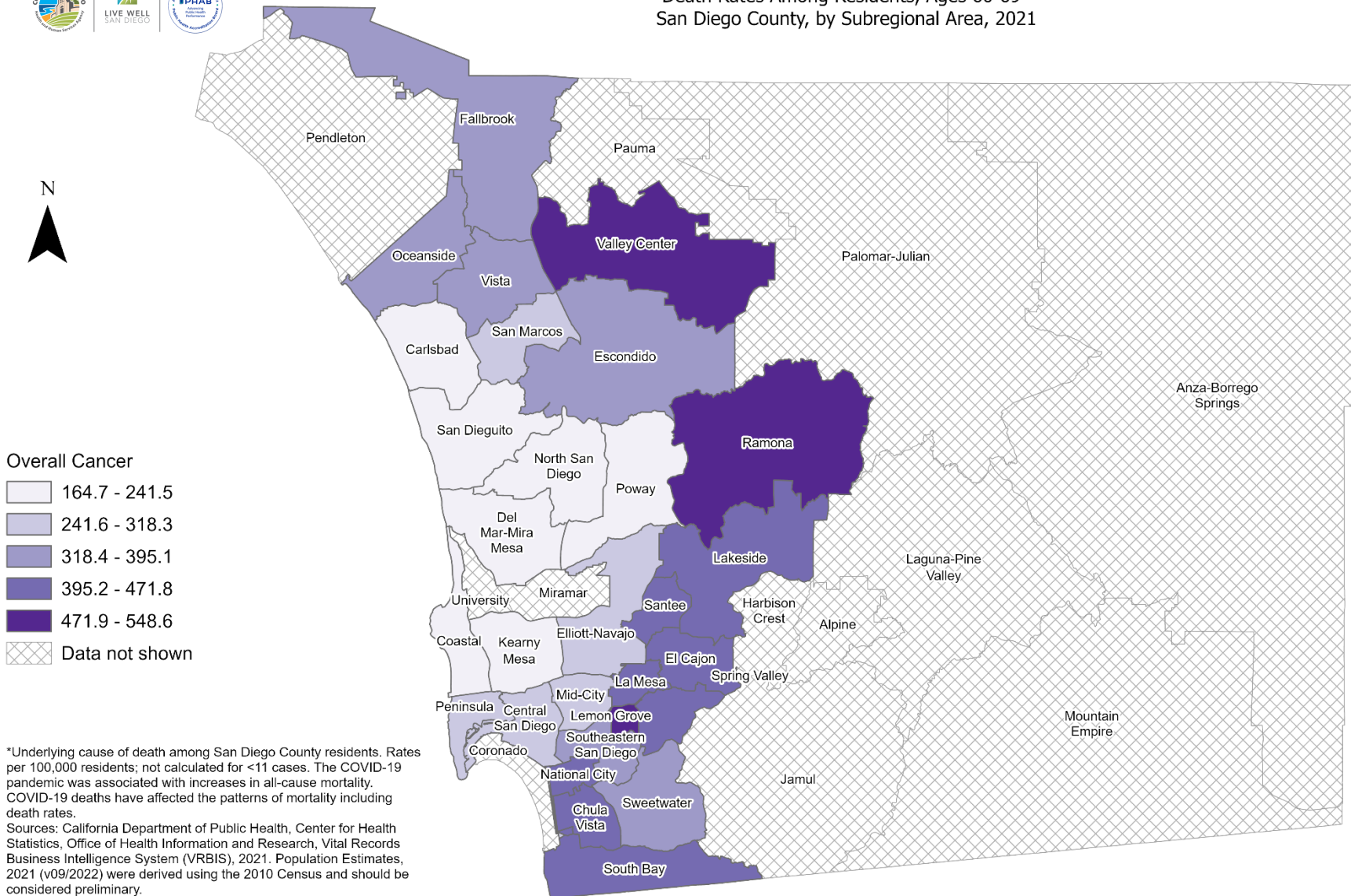


Maps & Analysis by County of San Diego, Health and Human Services Agency, Public Health Services, Community Health Statistics Unit.
Contact 619.692.6672.
https://www.sandiegocounty.gov/hhsa/programs/phs/community_health_statistics/
August, 2023.
LiveWellSD.org.



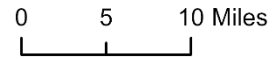


Death Rates Among Residents, Ages 60-69* San Diego County, by Subregional Area, 2021



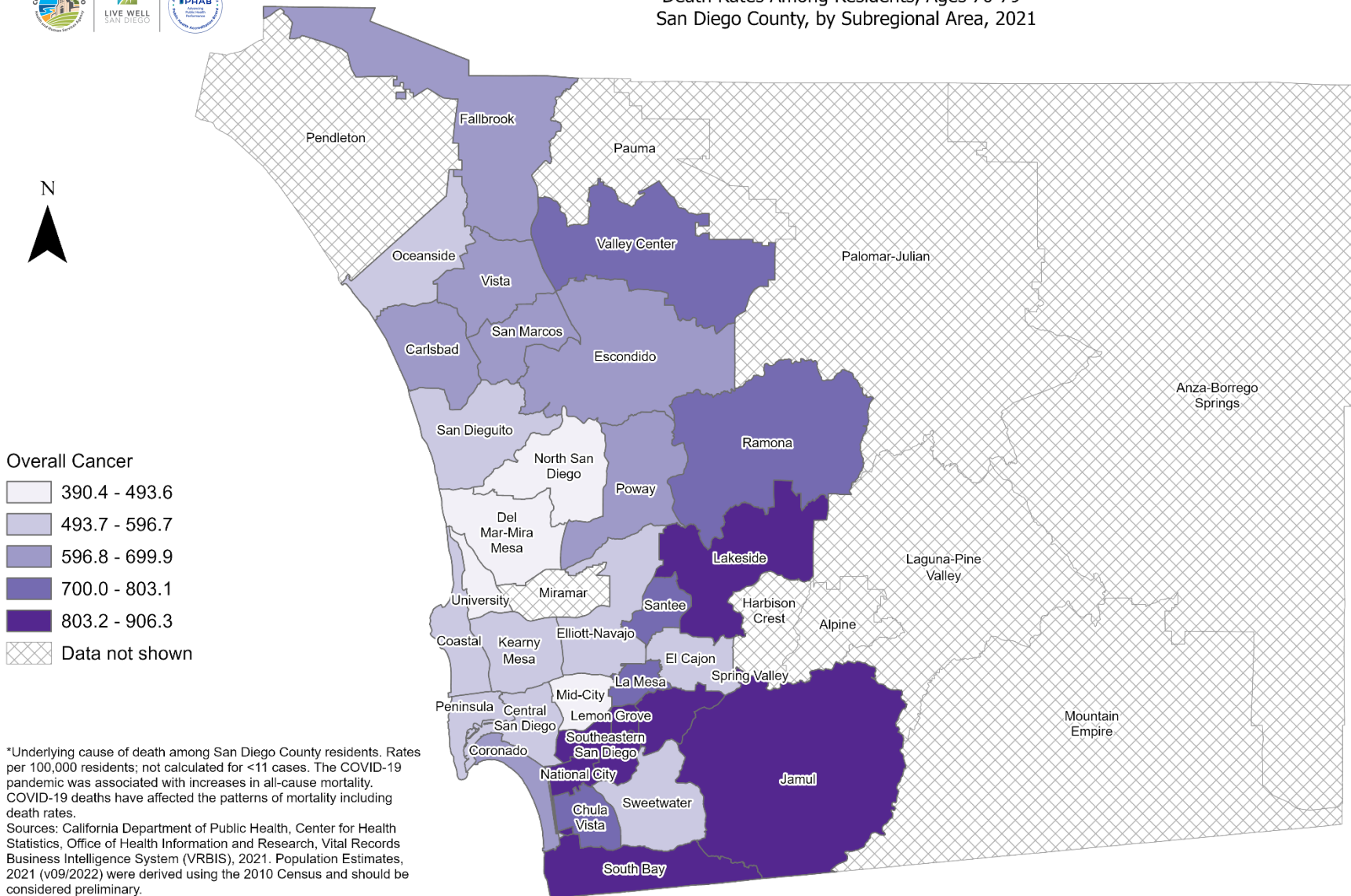
*Underlying cause of death among San Diego County residents. Rates per 100,000 residents; not calculated for <11 cases. The COVID-19 pandemic was associated with increases in all-cause mortality. COVID-19 deaths have affected the patterns of mortality including death rates.
Sources: California Department of Public Health, Center for Health Statistics, Office of Health Information and Research, Vital Records Business Intelligence System (VRBIS), 2021. Population Estimates, 2021 (v09/2022) were derived using the 2010 Census and should be considered preliminary.

Maps & Analysis by County of San Diego, Health and Human Services Agency, Public Health Services, Community Health Statistics Unit.
Contact 619.692.6672.
https://www.sandiegocounty.gov/hhsa/programs/phs/community_health_statistics/
August, 2023.
LiveWellSD.org.



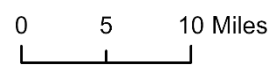


Death Rates Among Residents, Ages 70-79* San Diego County, by Subregional Area, 2021



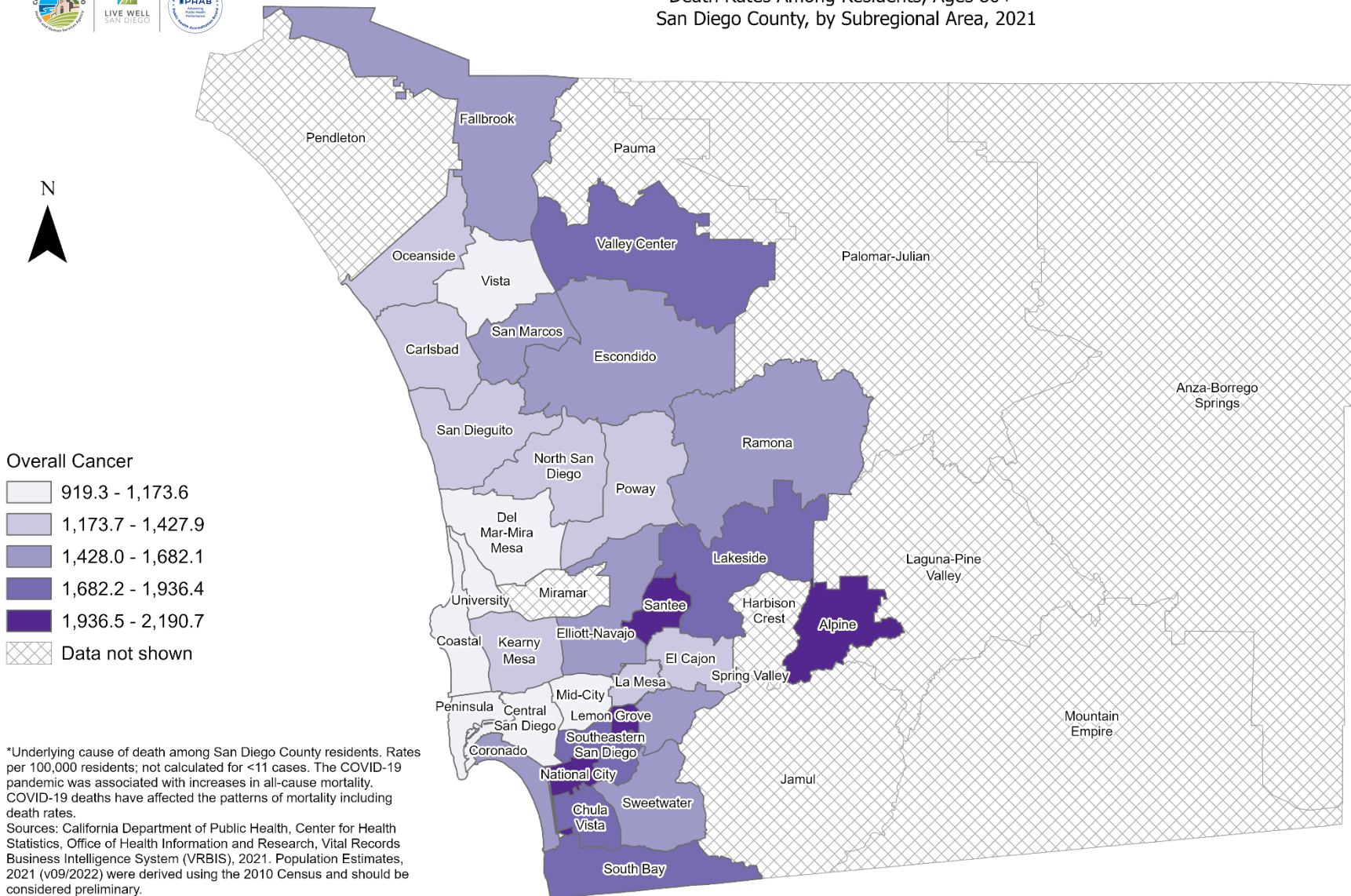
*Underlying cause of death among San Diego County residents. Rates per 100,000 residents; not calculated for <11 cases. The COVID-19 pandemic was associated with increases in all-cause mortality. COVID-19 deaths have affected the patterns of mortality including death rates.
Sources: California Department of Public Health, Center for Health Statistics, Office of Health Information and Research, Vital Records Business Intelligence System (VRBIS), 2021. Population Estimates, 2021 (v09/2022) were derived using the 2010 Census and should be considered preliminary.

Maps & Analysis by County of San Diego, Health and Human Services Agency, Public Health Services, Community Health Statistics Unit.
Contact 619.692.6672.
https://www.sandiegocounty.gov/hhsa/programs/phs/community_health_statistics/
August, 2023.
LiveWellSD.org.





Death Rates Among Residents, Ages 80+* San Diego County, by Subregional Area, 2021



Maps & Analysis by County of San Diego, Health and Human Services Agency, Public Health Services, Community Health Statistics Unit.
Contact 619.692.6672.
https://www.sandiegocounty.gov/hhsa/programs/phs/community_health_statistics/
August, 2023.
LiveWellSD.org.



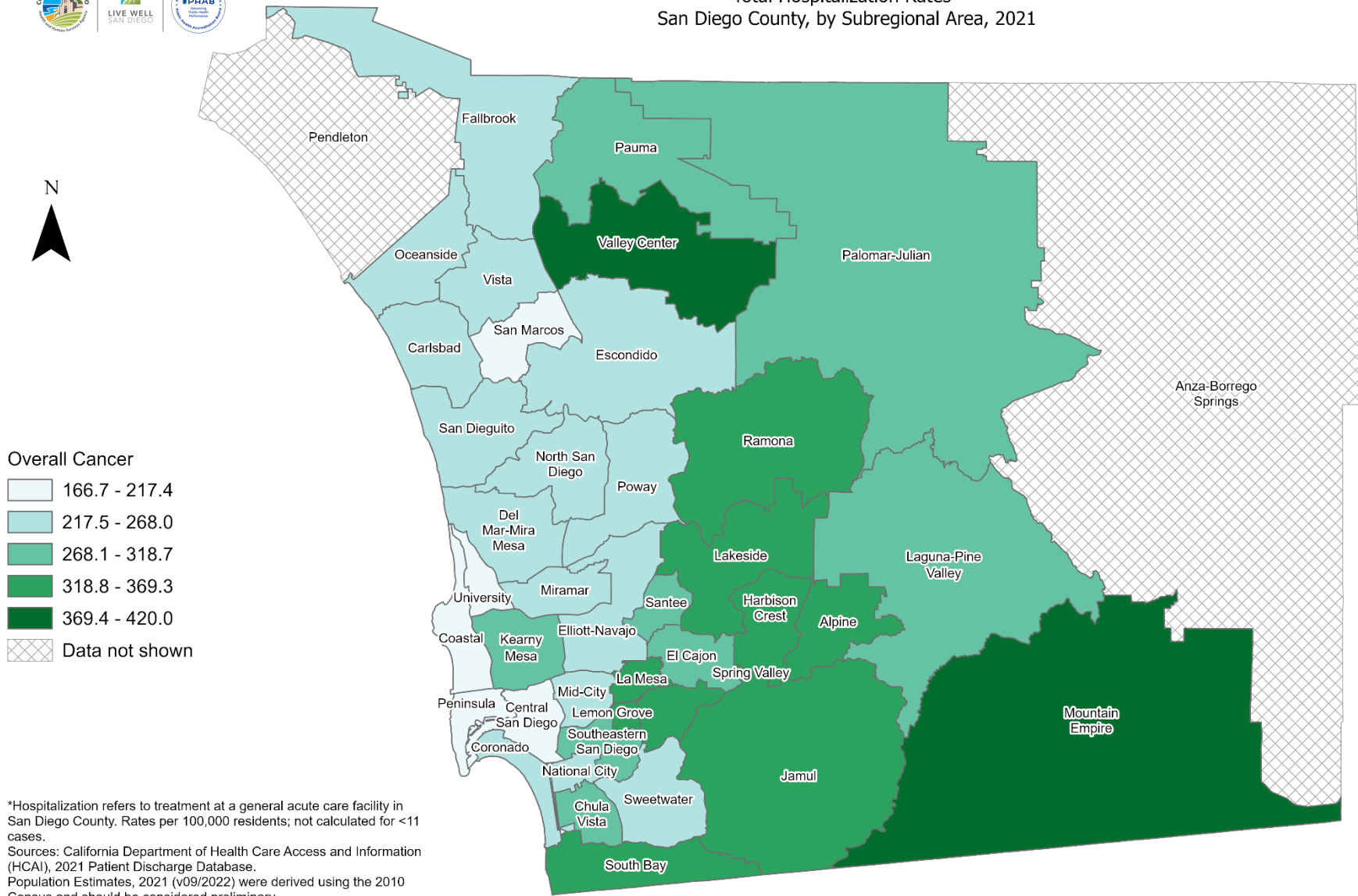
SECTION 2

Hospitalization Rates Among San Diego County Residents by Demographics, 2021:

- Total Rate
 - Race/Ethnicity
 - Asian/Pacific Islander (API)
 - Black
 - Hispanic
 - White
 - Age Group
 - 0-9 Years
 - 10-19 Years
 - 20-29 Years
 - 30-39 Years
 - 40-49 Years
 - 50-59 Years
 - 60-69 Years
 - 70-79 Years
 - 80+ Years

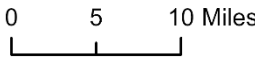


Total Hospitalization Rates* San Diego County, by Subregional Area, 2021



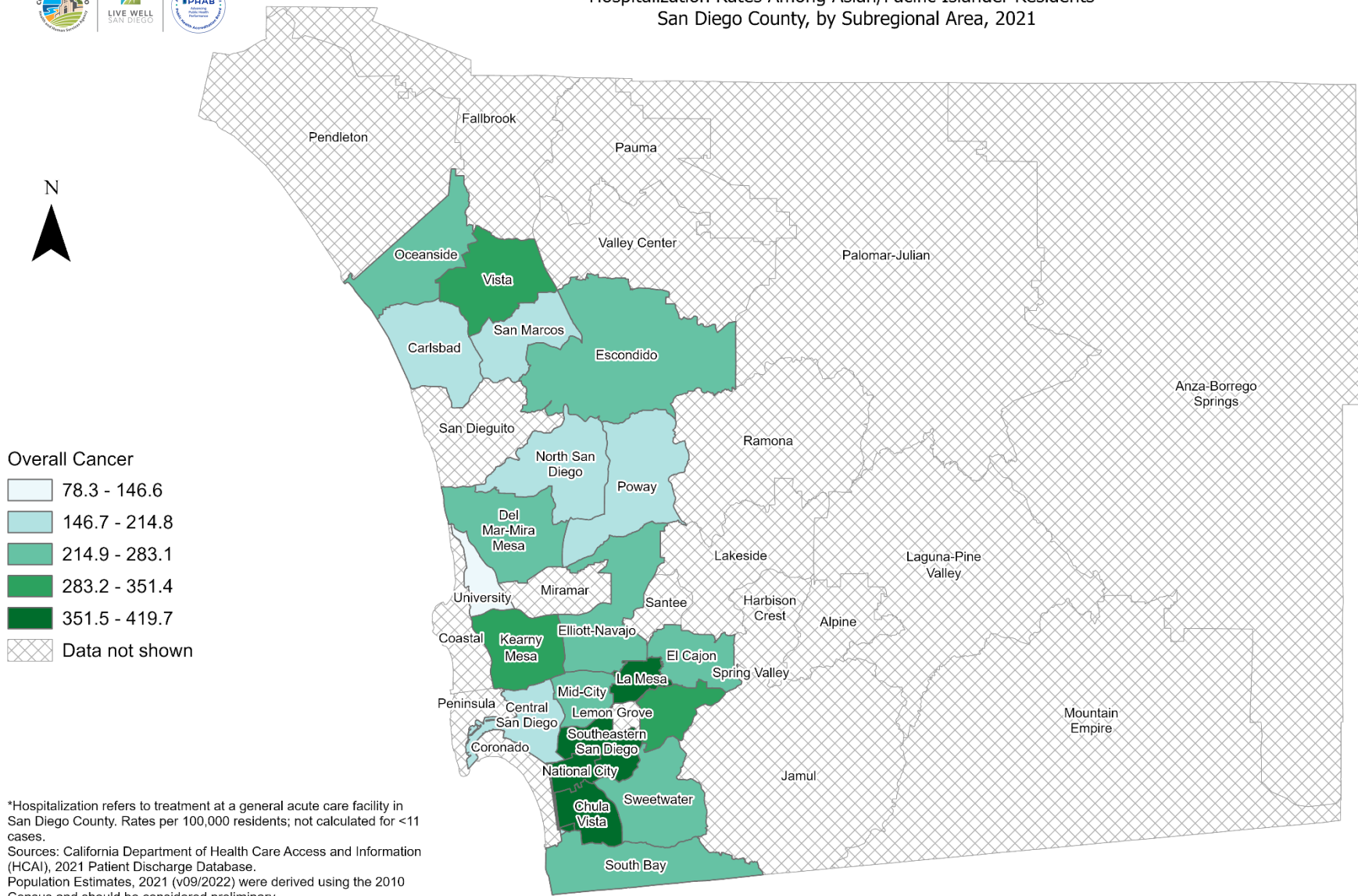
*Hospitalization refers to treatment at a general acute care facility in San Diego County. Rates per 100,000 residents; not calculated for <11 cases.
Sources: California Department of Health Care Access and Information (HCAI), 2021 Patient Discharge Database.
Population Estimates, 2021 (v09/2022) were derived using the 2010 Census and should be considered preliminary.

Maps & Analysis by County of San Diego, Health and Human Services Agency, Public Health Services, Community Health Statistics Unit.
Contact 619.692.6672. https://www.sandiegocounty.gov/hhsa/programs/phs/community_health_statistics/
August, 2023.
LiveWellSD.org.



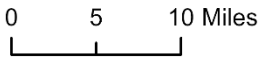


Hospitalization Rates Among Asian/Pacific Islander Residents* San Diego County, by Subregional Area, 2021



*Hospitalization refers to treatment at a general acute care facility in San Diego County. Rates per 100,000 residents; not calculated for <11 cases.
Sources: California Department of Health Care Access and Information (HCAI), 2021 Patient Discharge Database.
Population Estimates, 2021 (v09/2022) were derived using the 2010 Census and should be considered preliminary.

Maps & Analysis by County of San Diego, Health and Human Services Agency, Public Health Services, Community Health Statistics Unit.
Contact 619.692.6672. https://www.sandiegocounty.gov/hhsa/programs/phs/community_health_statistics/.
August, 2023.
LiveWellSD.org.



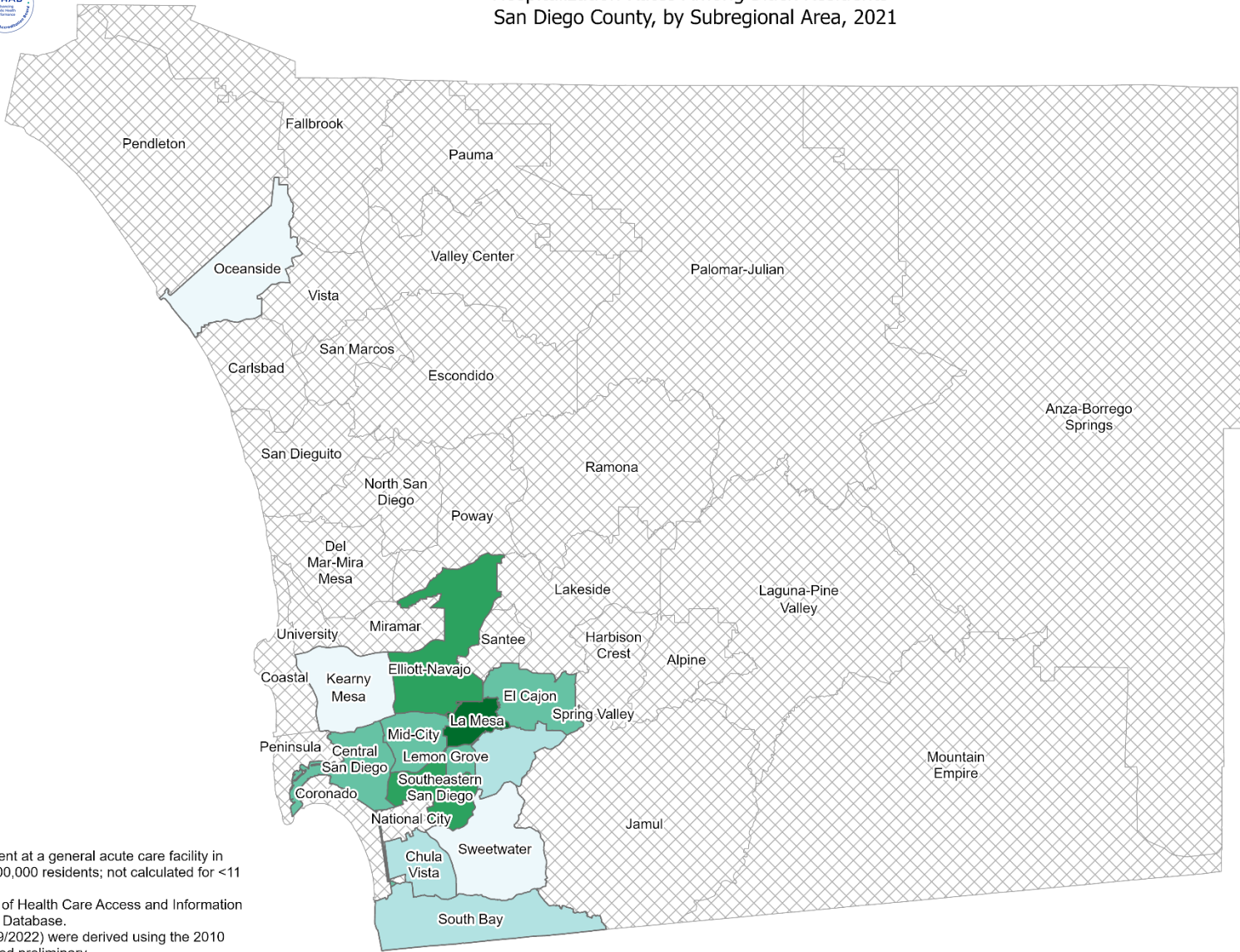


Hospitalization Rates Among Black Residents* San Diego County, by Subregional Area, 2021



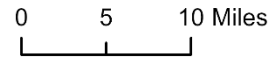
Overall Cancer

- 204.1 - 252.8
- 252.9 - 301.5
- 301.6 - 350.1
- 350.2 - 398.8
- 398.9 - 447.4
- Data not shown



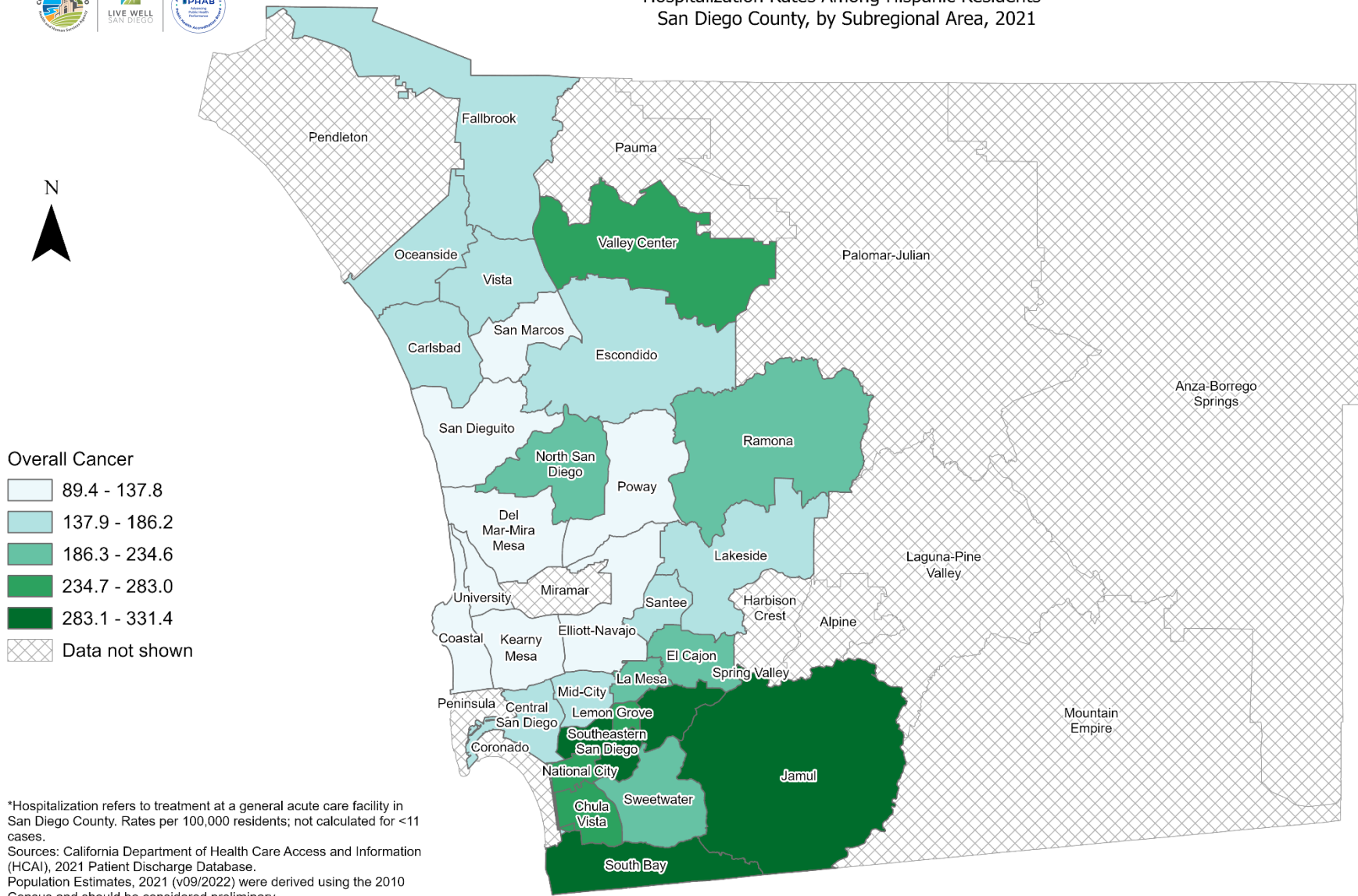
*Hospitalization refers to treatment at a general acute care facility in San Diego County. Rates per 100,000 residents; not calculated for <11 cases.
Sources: California Department of Health Care Access and Information (HCAI), 2021 Patient Discharge Database.
Population Estimates, 2021 (v09/2022) were derived using the 2010 Census and should be considered preliminary.

Maps & Analysis by County of San Diego, Health and Human Services Agency, Public Health Services, Community Health Statistics Unit.
Contact 619.692.6672. https://www.sandiegocounty.gov/hhsa/programs/phs/community_health_statistics/.
August, 2023.
LiveWellSD.org.



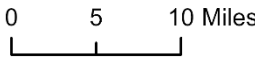


Hospitalization Rates Among Hispanic Residents* San Diego County, by Subregional Area, 2021



*Hospitalization refers to treatment at a general acute care facility in San Diego County. Rates per 100,000 residents; not calculated for <11 cases.
Sources: California Department of Health Care Access and Information (HCAI), 2021 Patient Discharge Database.
Population Estimates, 2021 (v09/2022) were derived using the 2010 Census and should be considered preliminary.

Maps & Analysis by County of San Diego, Health and Human Services Agency, Public Health Services, Community Health Statistics Unit.
Contact 619.692.6672. https://www.sandiegocounty.gov/hhsa/programs/phs/community_health_statistics/.
August, 2023.
LiveWellSD.org.

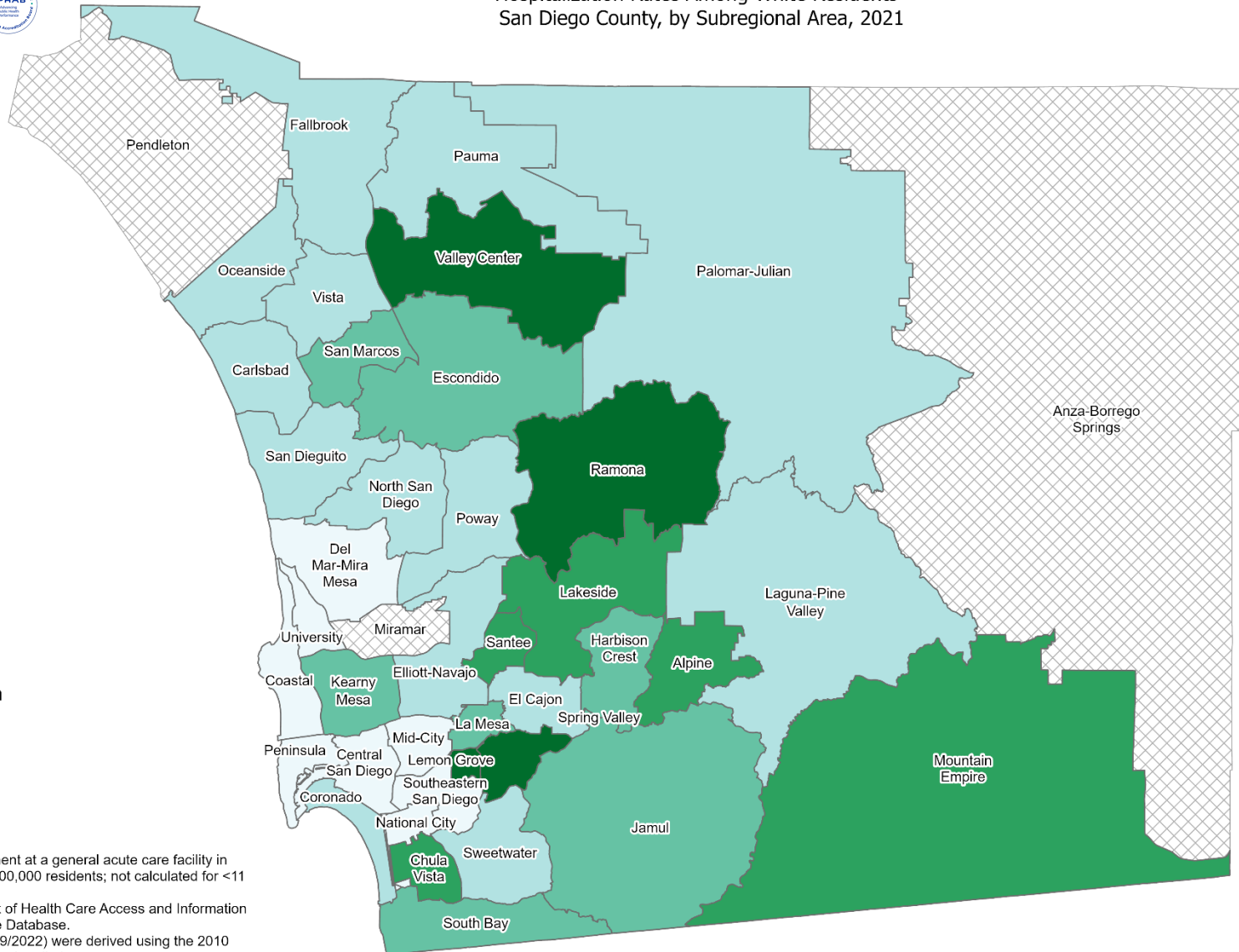
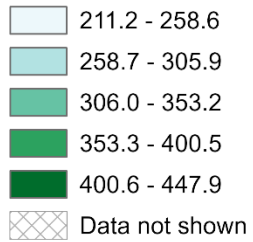




Hospitalization Rates Among White Residents* San Diego County, by Subregional Area, 2021



Overall Cancer



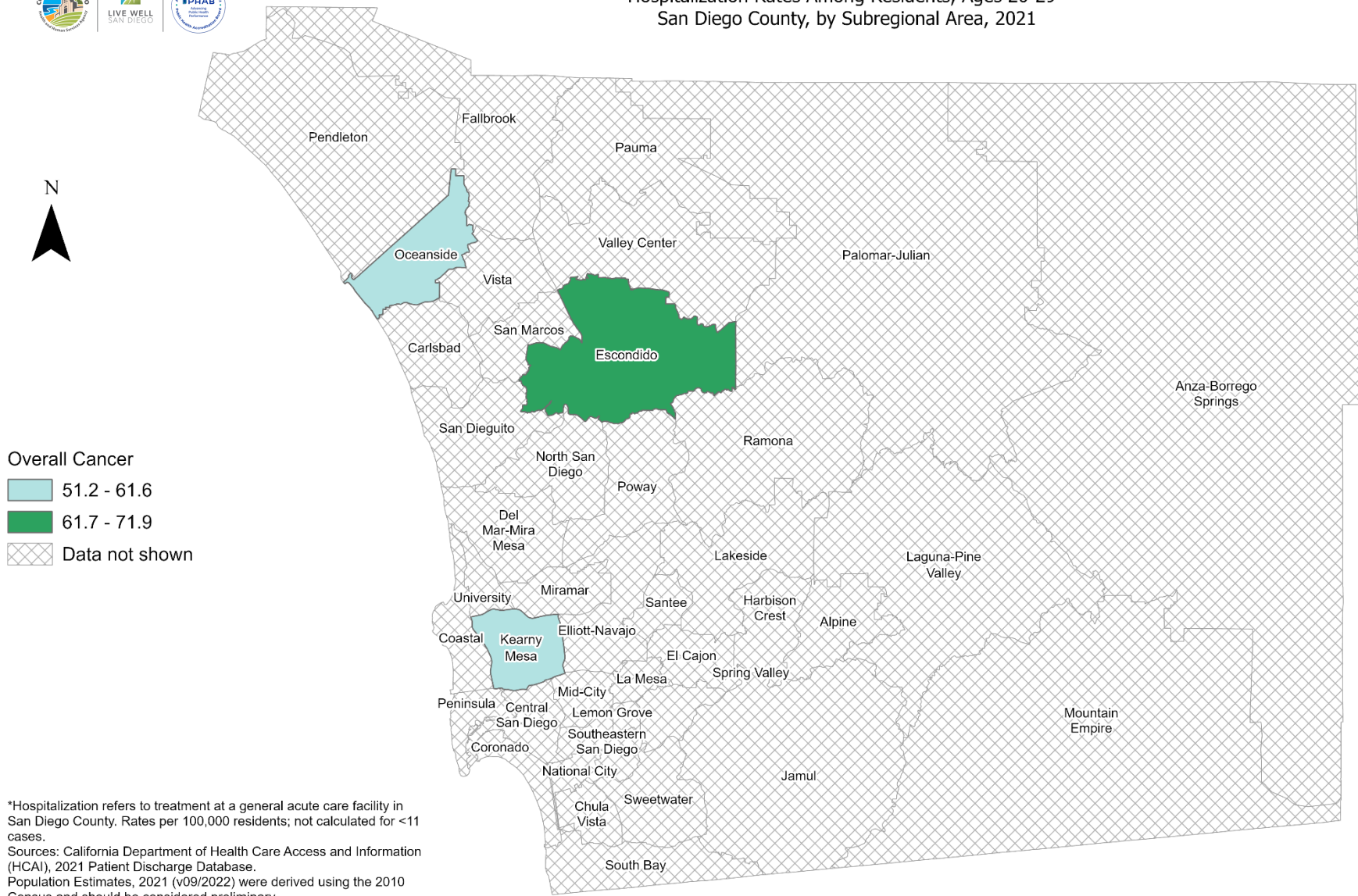
*Hospitalization refers to treatment at a general acute care facility in San Diego County. Rates per 100,000 residents; not calculated for <11 cases.
Sources: California Department of Health Care Access and Information (HCAI), 2021 Patient Discharge Database.
Population Estimates, 2021 (v09/2022) were derived using the 2010 Census and should be considered preliminary.

Maps & Analysis by County of San Diego, Health and Human Services Agency, Public Health Services, Community Health Statistics Unit.
Contact 619.692.6672. https://www.sandiegocounty.gov/hhsa/programs/phs/community_health_statistics/
August, 2023.
LiveWellSD.org.



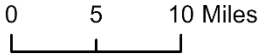


Hospitalization Rates Among Residents, Ages 20-29* San Diego County, by Subregional Area, 2021



*Hospitalization refers to treatment at a general acute care facility in San Diego County. Rates per 100,000 residents; not calculated for <11 cases.
Sources: California Department of Health Care Access and Information (HCAI), 2021 Patient Discharge Database.
Population Estimates, 2021 (v09/2022) were derived using the 2010 Census and should be considered preliminary.

Maps & Analysis by County of San Diego, Health and Human Services Agency, Public Health Services, Community Health Statistics Unit.
Contact 619.692.6672. https://www.sandiegocounty.gov/hhsa/programs/phs/community_health_statistics/.
August, 2023.
LiveWellSD.org.

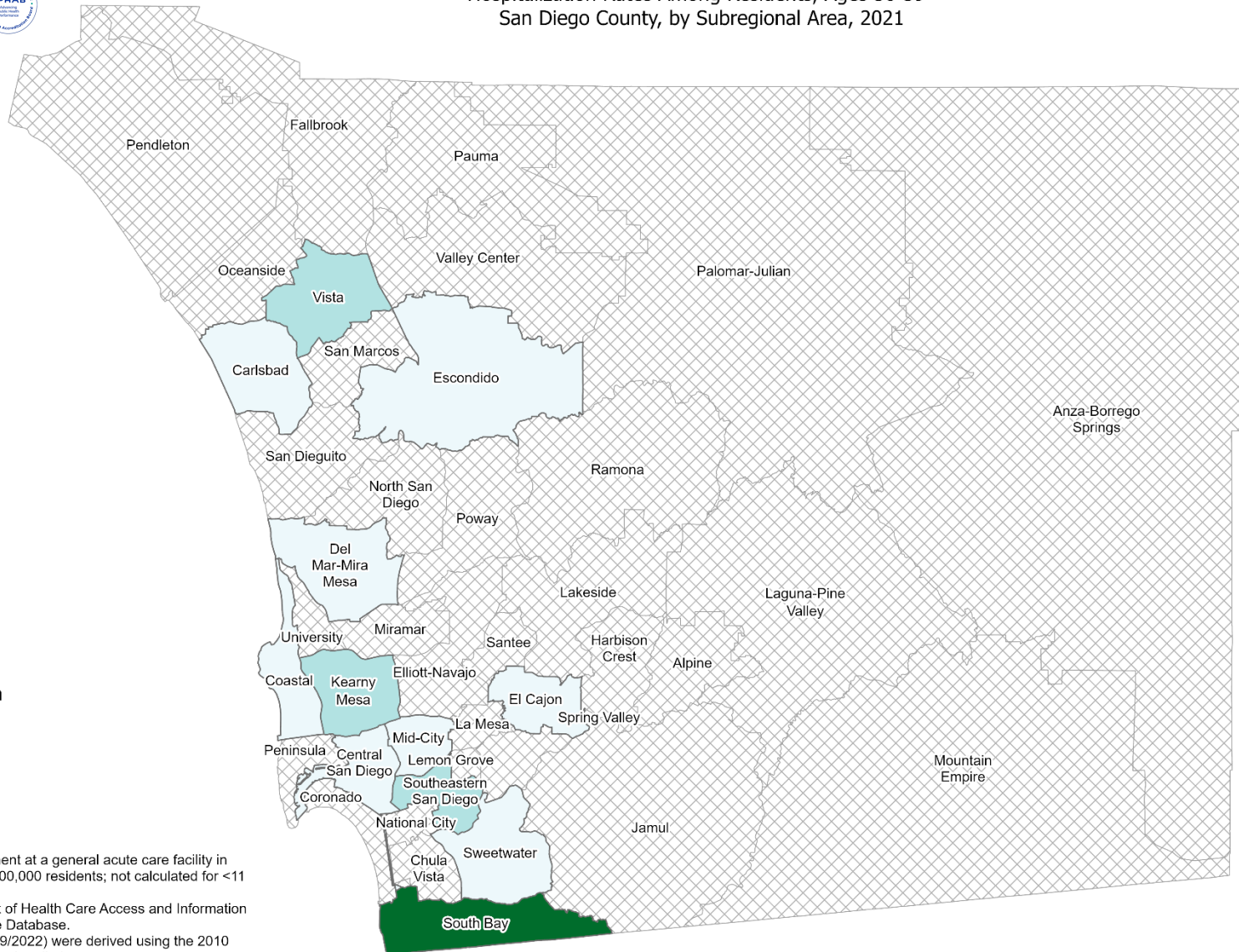
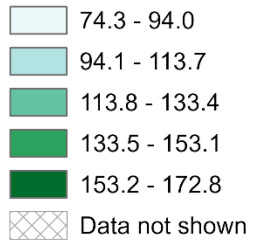




Hospitalization Rates Among Residents, Ages 30-39* San Diego County, by Subregional Area, 2021



Overall Cancer



*Hospitalization refers to treatment at a general acute care facility in San Diego County. Rates per 100,000 residents; not calculated for <11 cases.
Sources: California Department of Health Care Access and Information (HCAI), 2021 Patient Discharge Database.
Population Estimates, 2021 (v09/2022) were derived using the 2010 Census and should be considered preliminary.

Maps & Analysis by County of San Diego, Health and Human Services Agency, Public Health Services, Community Health Statistics Unit.
Contact 619.692.6672. https://www.sandiegocounty.gov/hhsa/programs/phs/community_health_statistics/.
August, 2023.
LiveWellSD.org.



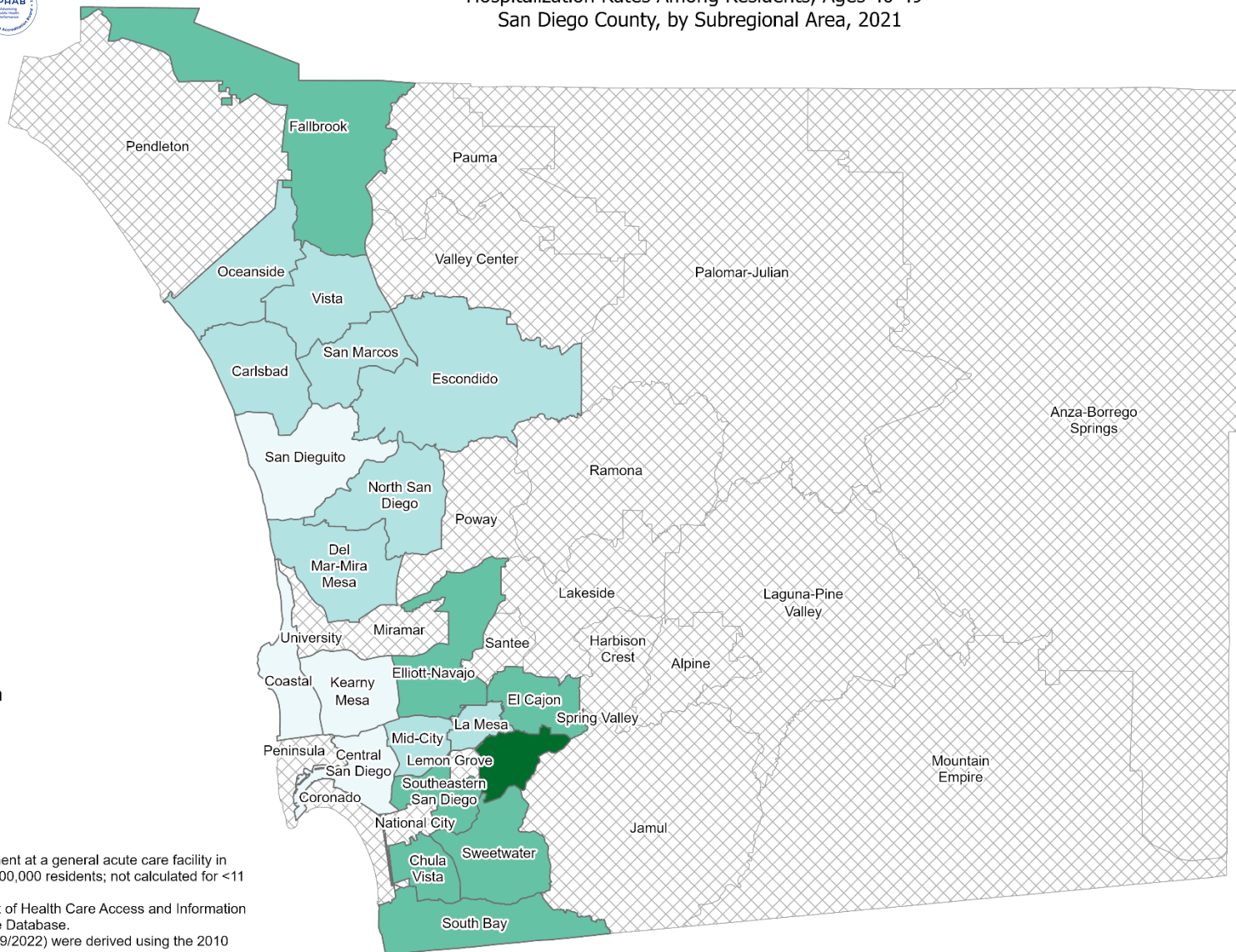


Hospitalization Rates Among Residents, Ages 40-49* San Diego County, by Subregional Area, 2021



Overall Cancer

- 94.6 - 148.3
- 148.4 - 202.1
- 202.2 - 255.9
- 256.0 - 309.6
- 309.7 - 363.4
- Data not shown



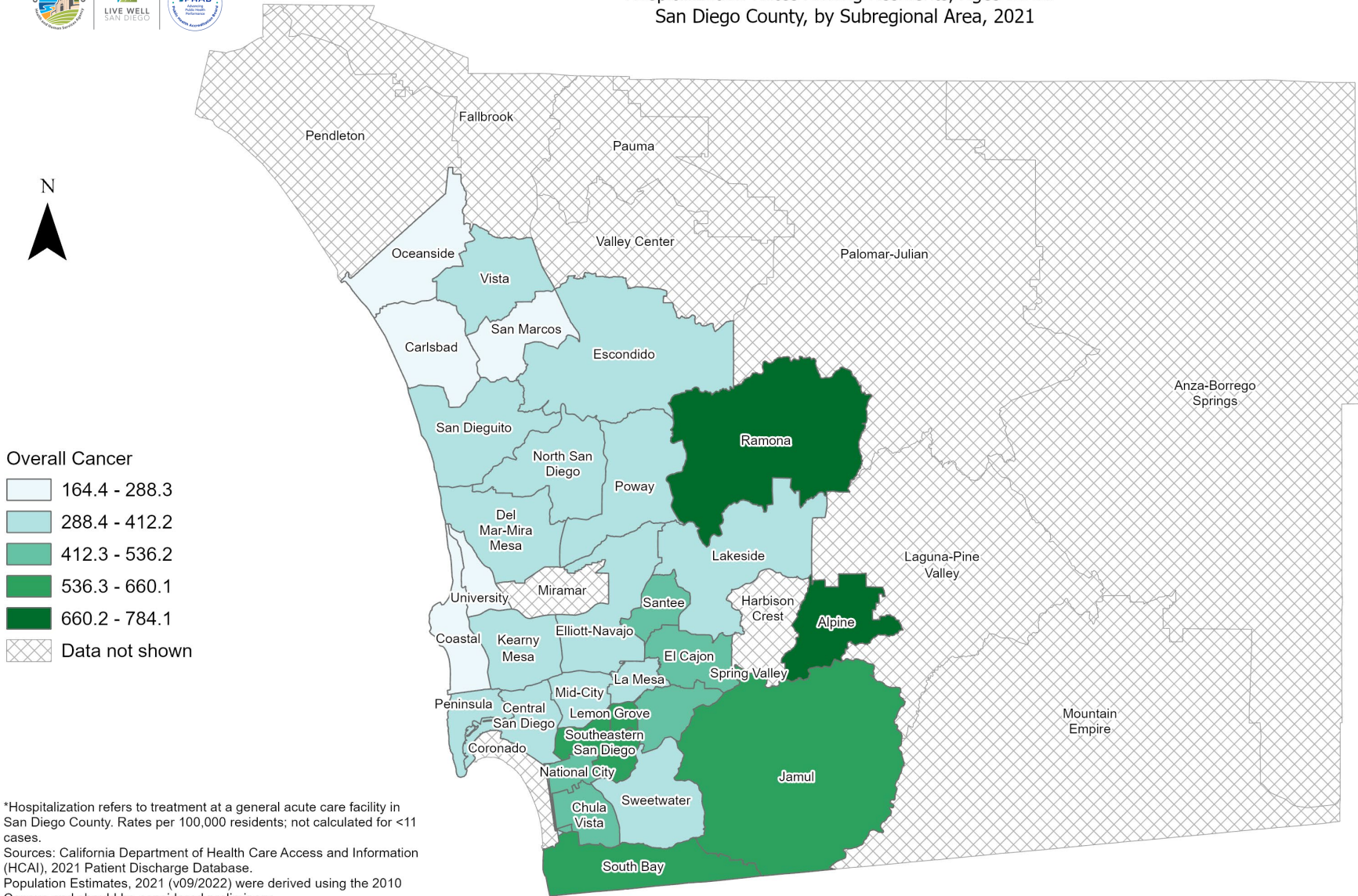
*Hospitalization refers to treatment at a general acute care facility in San Diego County. Rates per 100,000 residents; not calculated for <11 cases.
Sources: California Department of Health Care Access and Information (HCAI), 2021 Patient Discharge Database.
Population Estimates, 2021 (v09/2022) were derived using the 2010 Census and should be considered preliminary.

Maps & Analysis by County of San Diego, Health and Human Services Agency, Public Health Services, Community Health Statistics Unit.
Contact 619.692.6672. https://www.sandiegocounty.gov/hhsa/programs/phs/community_health_statistics/.
August, 2023.
LiveWellSD.org.





Hospitalization Rates Among Residents, Ages 50-59* San Diego County, by Subregional Area, 2021

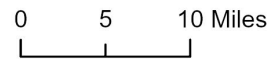


Overall Cancer

- 164.4 - 288.3
- 288.4 - 412.2
- 412.3 - 536.2
- 536.3 - 660.1
- 660.2 - 784.1
- Data not shown

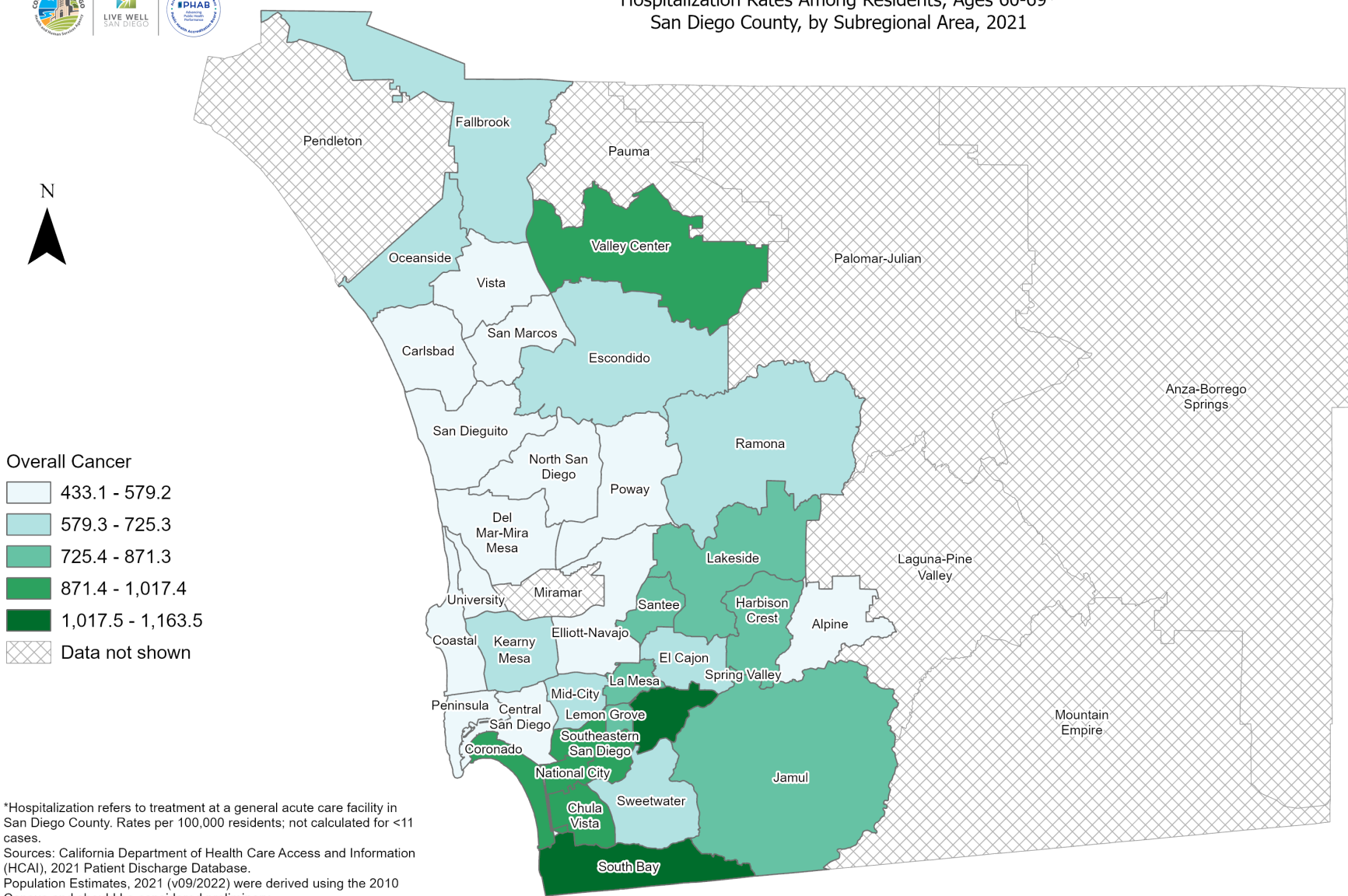
*Hospitalization refers to treatment at a general acute care facility in San Diego County. Rates per 100,000 residents; not calculated for <11 cases.
Sources: California Department of Health Care Access and Information (HCAI), 2021 Patient Discharge Database, Population Estimates, 2021 (v09/2022) were derived using the 2010 Census and should be considered preliminary.

Maps & Analysis by County of San Diego, Health and Human Services Agency, Public Health Services, Community Health Statistics Unit. Contact 619.692.6672. https://www.sandiegocounty.gov/hhsa/programs/phs/community_health_statistics/. August, 2023. LiveWellSD.org.



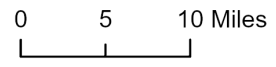


Hospitalization Rates Among Residents, Ages 60-69* San Diego County, by Subregional Area, 2021



*Hospitalization refers to treatment at a general acute care facility in San Diego County. Rates per 100,000 residents; not calculated for <11 cases.
Sources: California Department of Health Care Access and Information (HCAI), 2021 Patient Discharge Database, Population Estimates, 2021 (v09/2022) were derived using the 2010 Census and should be considered preliminary.

Maps & Analysis by County of San Diego, Health and Human Services Agency, Public Health Services, Community Health Statistics Unit. Contact 619.692.6672. https://www.sandiegocounty.gov/hhsa/programs/phs/community_health_statistics/. August, 2023. LiveWellSD.org.



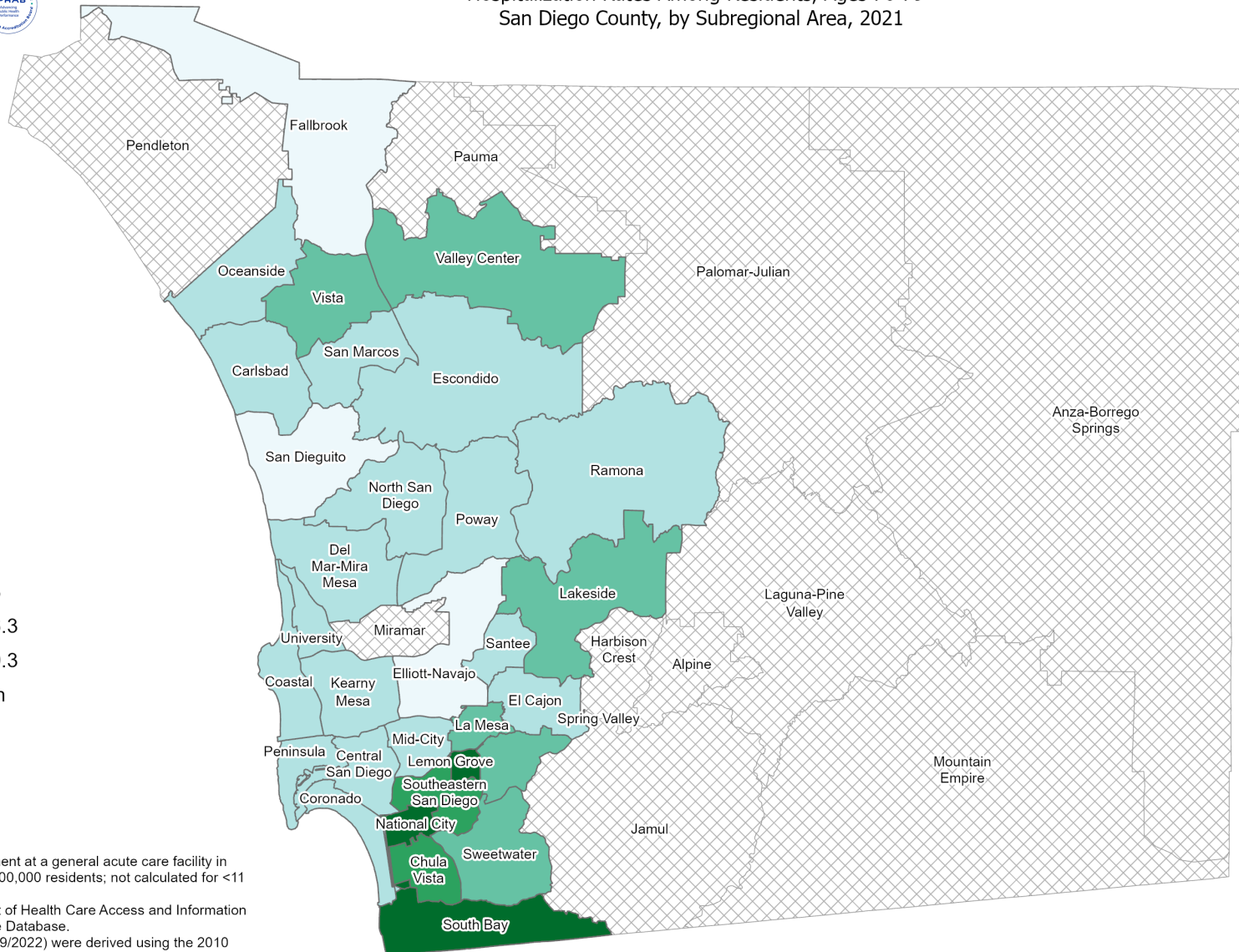


Hospitalization Rates Among Residents, Ages 70-79* San Diego County, by Subregional Area, 2021



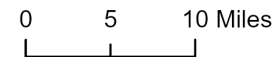
Overall Cancer

- 454.2 - 657.2
- 657.3 - 860.2
- 860.3 - 1,063.3
- 1,063.4 - 1,266.3
- 1,266.4 - 1,469.3
- Data not shown



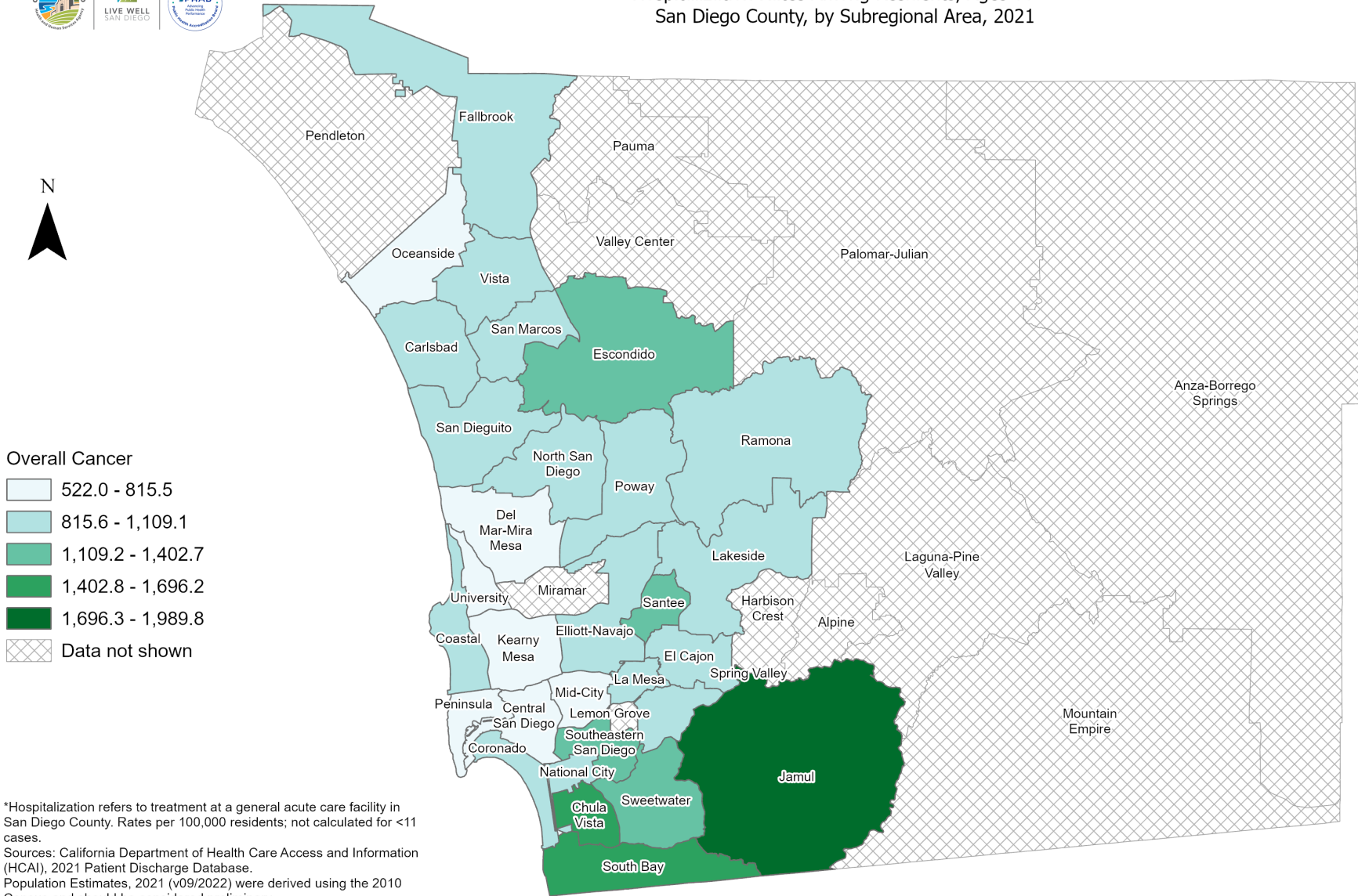
*Hospitalization refers to treatment at a general acute care facility in San Diego County. Rates per 100,000 residents; not calculated for <11 cases.
Sources: California Department of Health Care Access and Information (HCAI), 2021 Patient Discharge Database, Population Estimates, 2021 (v09/2022) were derived using the 2010 Census and should be considered preliminary.

Maps & Analysis by County of San Diego, Health and Human Services Agency, Public Health Services, Community Health Statistics Unit. Contact 619.692.6672. https://www.sandiegocounty.gov/hhsa/programs/phs/community_health_statistics/. August, 2023. LiveWellSD.org.





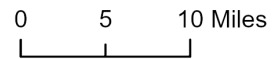
Hospitalization Rates Among Residents, Ages 80+* San Diego County, by Subregional Area, 2021



- Overall Cancer**
- 522.0 - 815.5
 - 815.6 - 1,109.1
 - 1,109.2 - 1,402.7
 - 1,402.8 - 1,696.2
 - 1,696.3 - 1,989.8
 - Data not shown

*Hospitalization refers to treatment at a general acute care facility in San Diego County. Rates per 100,000 residents; not calculated for <11 cases.
Sources: California Department of Health Care Access and Information (HCAI), 2021 Patient Discharge Database. Population Estimates, 2021 (v09/2022) were derived using the 2010 Census and should be considered preliminary.

Maps & Analysis by County of San Diego, Health and Human Services Agency, Public Health Services, Community Health Statistics Unit. Contact 619.692.6672. https://www.sandiegocounty.gov/hhsa/programs/phs/community_health_statistics/. August, 2023. LiveWellSD.org.



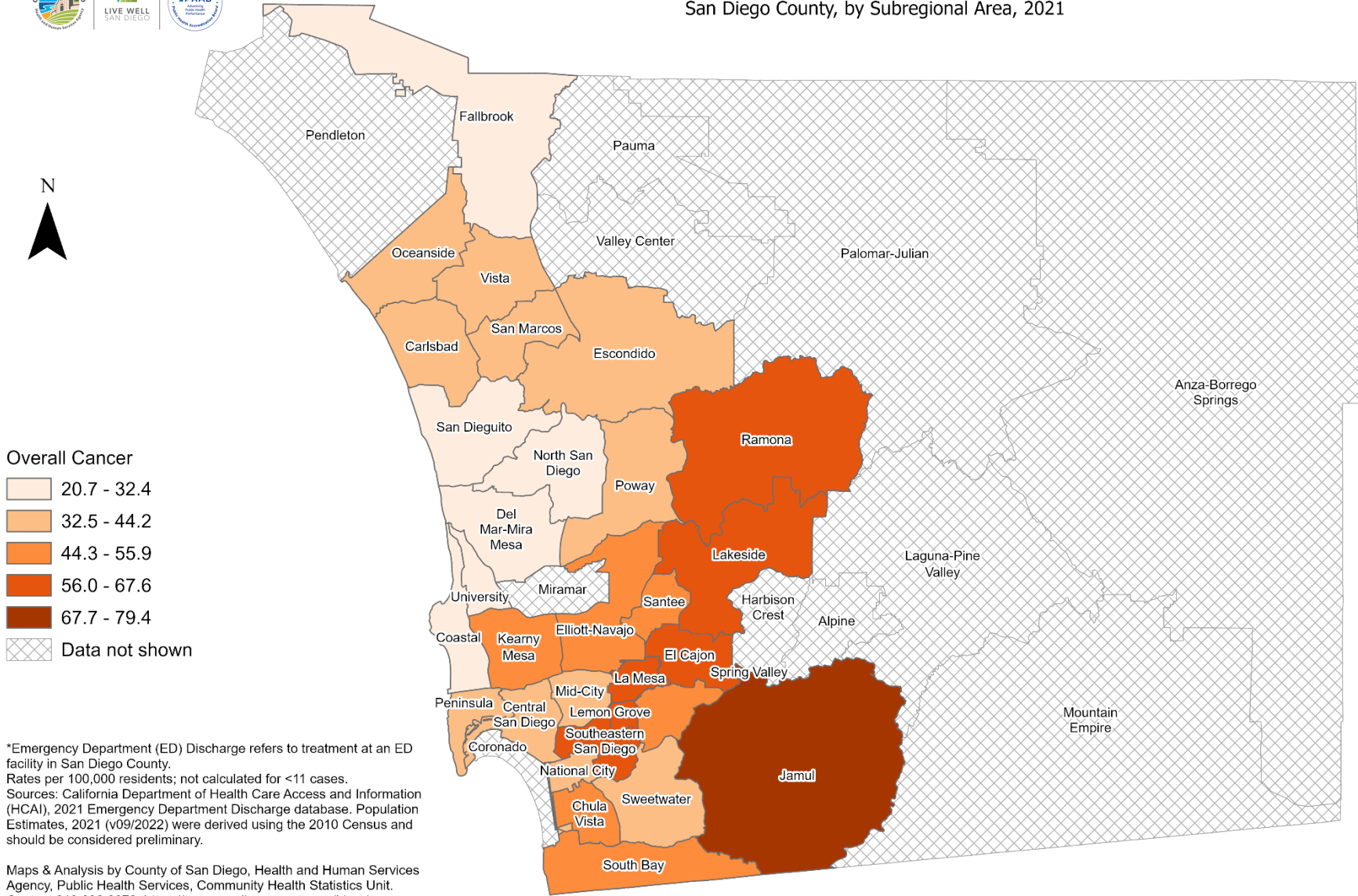
SECTION 3

Emergency Department (ED) Rates Among San Diego County Residents by Demographics, 2021:

- Total Rate
 - Race/Ethnicity
 - Asian/Pacific Islander (API)
 - Black
 - Hispanic
 - White
 - Age Group
 - 0-9 Years
 - 10-19 Years
 - 20-29 Years
 - 30-39 Years
 - 40-49 Years
 - 50-59 Years
 - 60-69 Years
 - 70-79 Years
 - 80+ Years



Total Emergency Department Discharge Rates* San Diego County, by Subregional Area, 2021

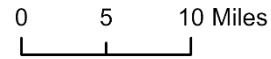


Overall Cancer

- 20.7 - 32.4
- 32.5 - 44.2
- 44.3 - 55.9
- 56.0 - 67.6
- 67.7 - 79.4
- Data not shown

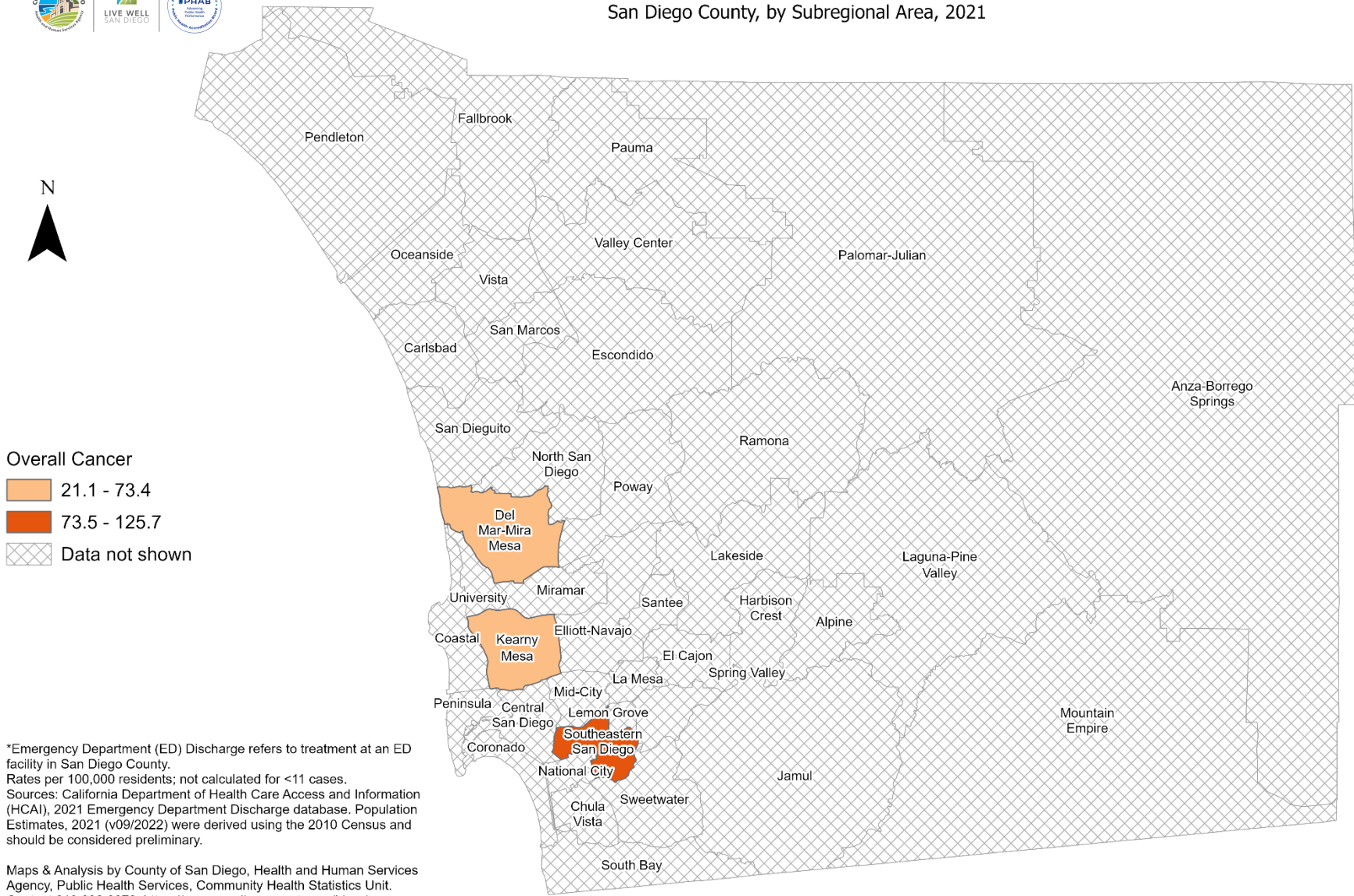
*Emergency Department (ED) Discharge refers to treatment at an ED facility in San Diego County. Rates per 100,000 residents; not calculated for <11 cases. Sources: California Department of Health Care Access and Information (HCAI), 2021 Emergency Department Discharge database. Population Estimates, 2021 (v09/2022) were derived using the 2010 Census and should be considered preliminary.

Maps & Analysis by County of San Diego, Health and Human Services Agency, Public Health Services, Community Health Statistics Unit. Contact 619.692.6672. https://www.sandiegocounty.gov/hhsa/programs/phs/community_health_statistics/. August, 2023. LiveWellSD.org.





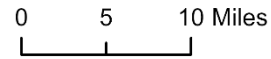
Emergency Department Discharge Rates Among Asian/Pacific Islander Residents* San Diego County, by Subregional Area, 2021



- Overall Cancer**
- 21.1 - 73.4
 - 73.5 - 125.7
 - Data not shown

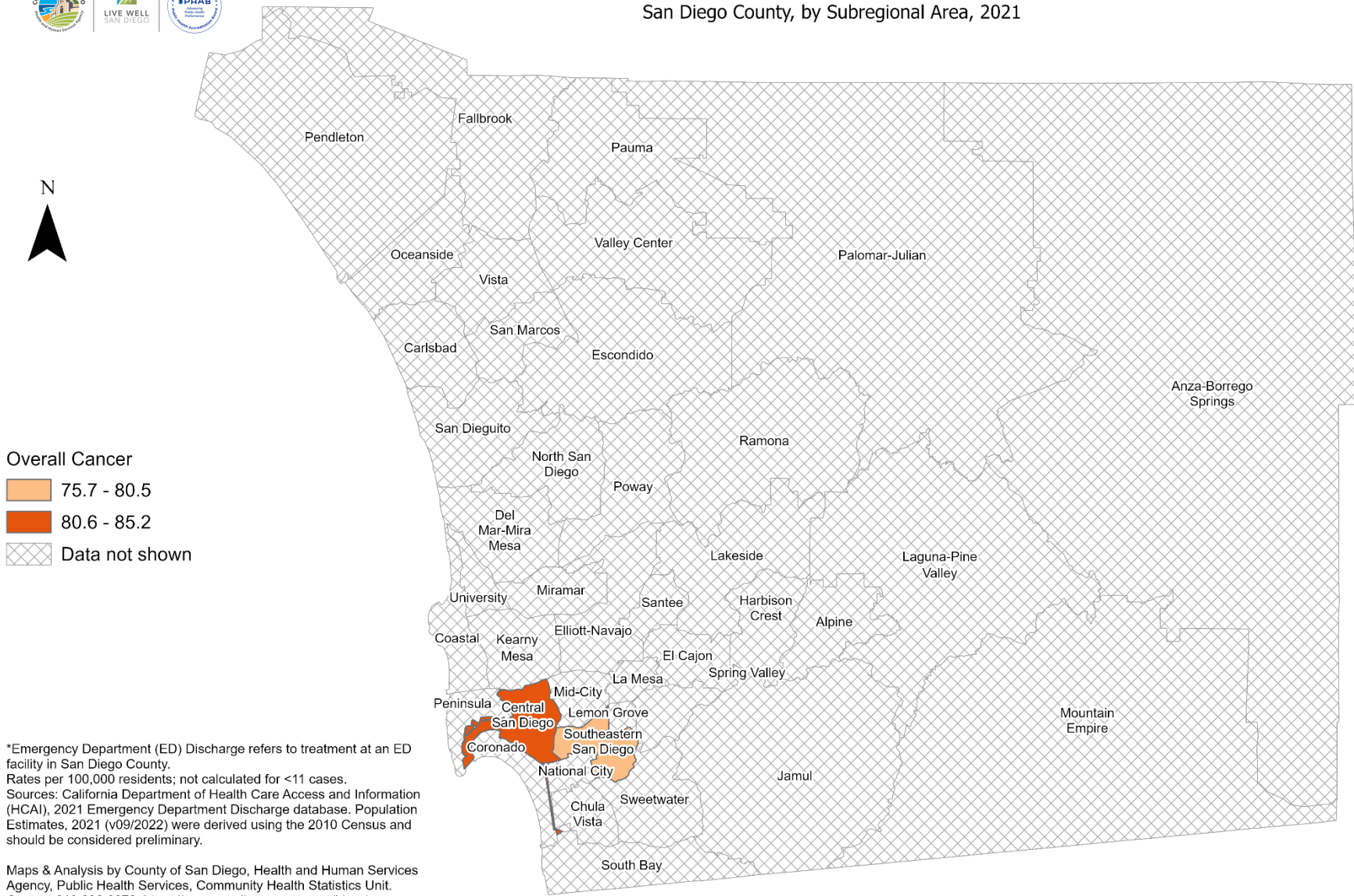
*Emergency Department (ED) Discharge refers to treatment at an ED facility in San Diego County.
 Rates per 100,000 residents; not calculated for <11 cases.
 Sources: California Department of Health Care Access and Information (HCAI), 2021 Emergency Department Discharge database. Population Estimates, 2021 (v09/2022) were derived using the 2010 Census and should be considered preliminary.

Maps & Analysis by County of San Diego, Health and Human Services Agency, Public Health Services, Community Health Statistics Unit.
 Contact 619.692.6672. https://www.sandiegocounty.gov/hhsa/programs/phs/community_health_statistics/.
 August, 2023.
 LiveWellSD.org.





Emergency Department Discharge Rates Among Black Residents* San Diego County, by Subregional Area, 2021

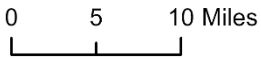


Overall Cancer

- 75.7 - 80.5
- 80.6 - 85.2
- Data not shown

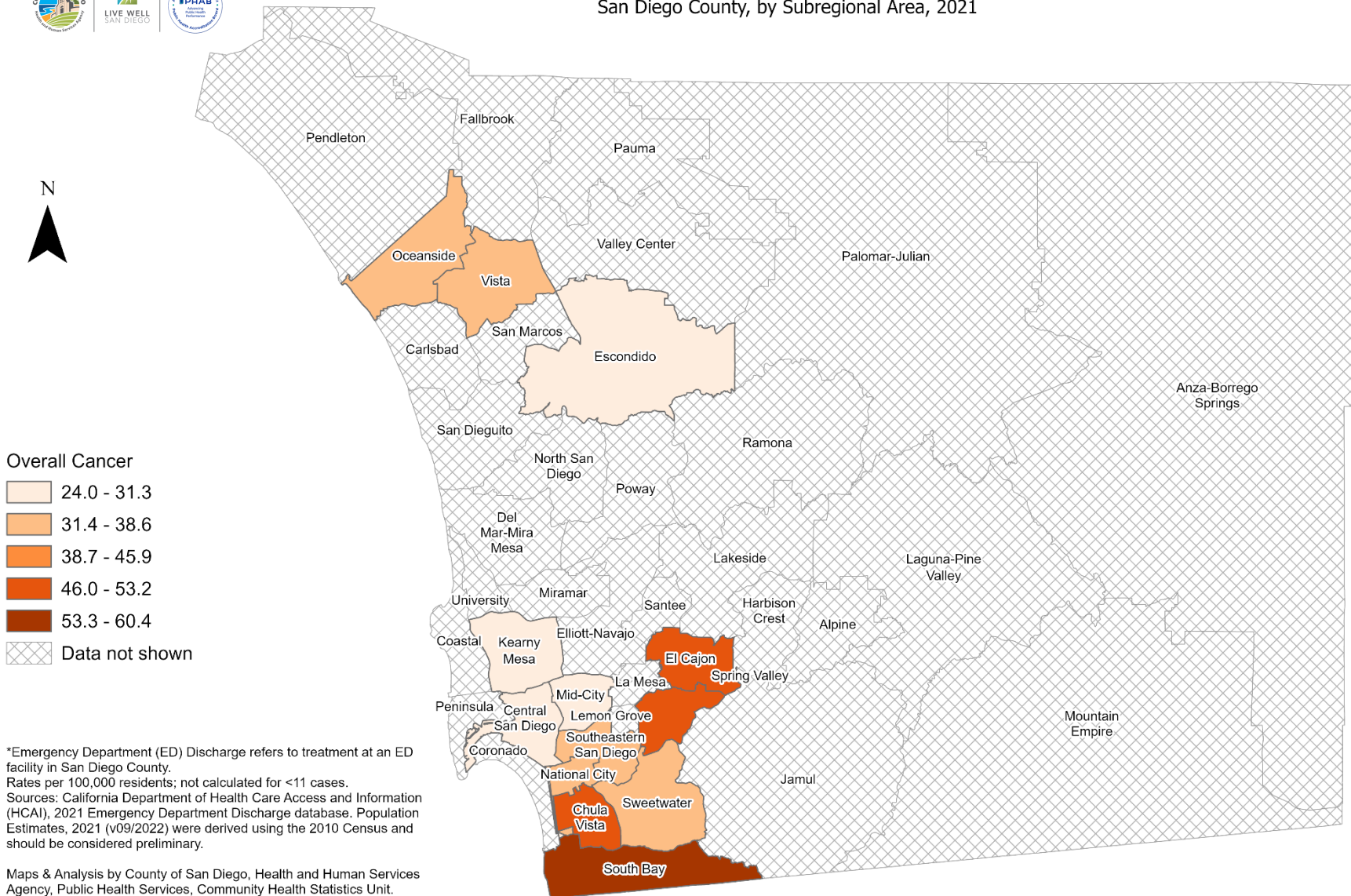
*Emergency Department (ED) Discharge refers to treatment at an ED facility in San Diego County.
 Rates per 100,000 residents; not calculated for <11 cases.
 Sources: California Department of Health Care Access and Information (HCAI), 2021 Emergency Department Discharge database. Population Estimates, 2021 (v09/2022) were derived using the 2010 Census and should be considered preliminary.

Maps & Analysis by County of San Diego, Health and Human Services Agency, Public Health Services, Community Health Statistics Unit.
 Contact 619.692.6672. https://www.sandiegocounty.gov/hhsa/programs/phs/community_health_statistics/.
 August, 2023.
 LiveWellSD.org.



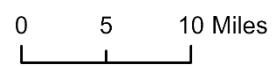


Emergency Department Discharge Rates Among Hispanic Residents* San Diego County, by Subregional Area, 2021



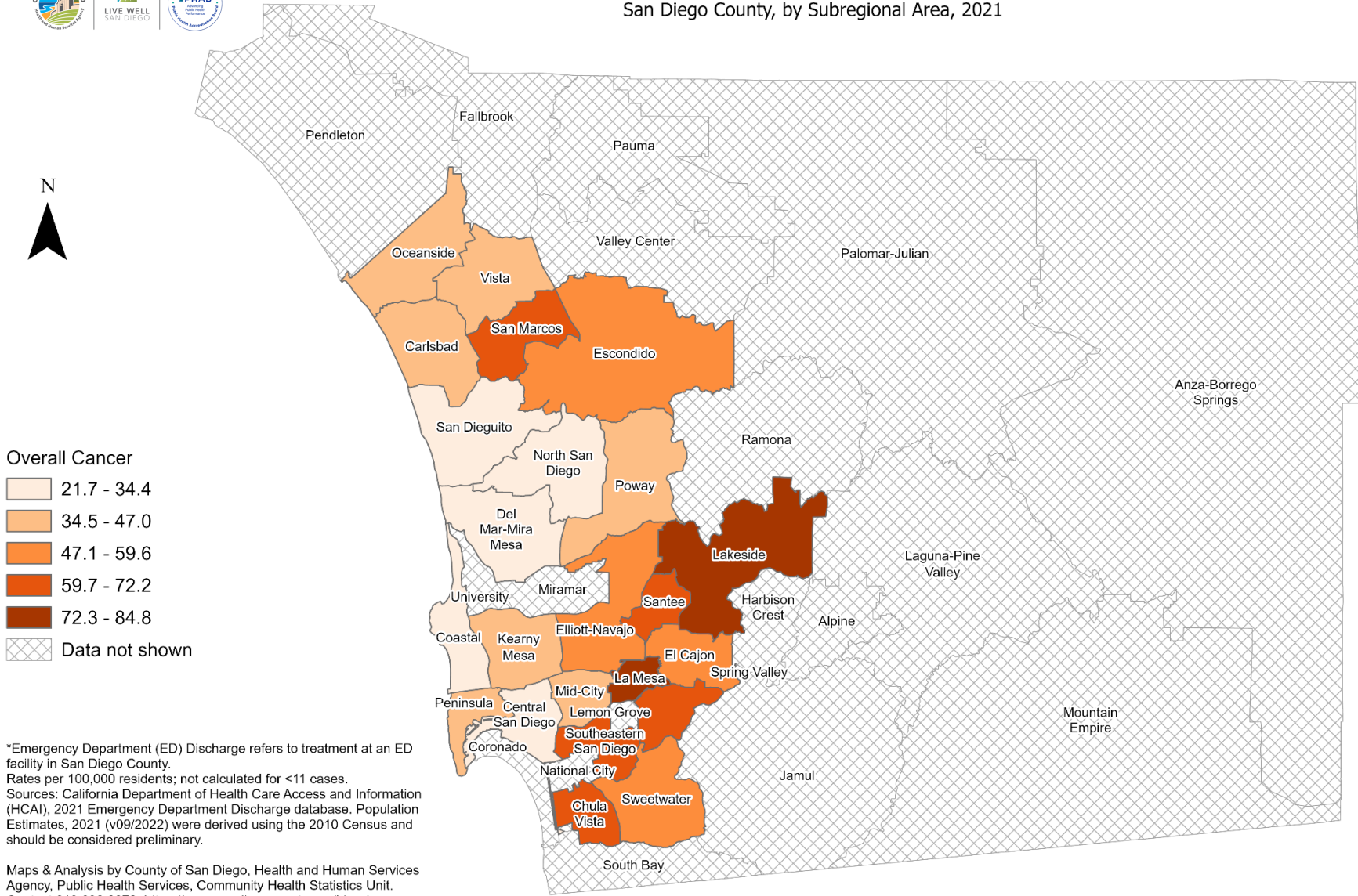
*Emergency Department (ED) Discharge refers to treatment at an ED facility in San Diego County.
 Rates per 100,000 residents; not calculated for <11 cases.
 Sources: California Department of Health Care Access and Information (HCAI), 2021 Emergency Department Discharge database. Population Estimates, 2021 (v09/2022) were derived using the 2010 Census and should be considered preliminary.

Maps & Analysis by County of San Diego, Health and Human Services Agency, Public Health Services, Community Health Statistics Unit.
 Contact 619.692.6672. https://www.sandiegocounty.gov/hhsa/programs/phs/community_health_statistics/.
 August, 2023.
 LiveWellSD.org.



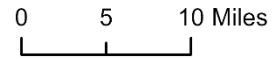


Emergency Department Discharge Rates Among White Residents* San Diego County, by Subregional Area, 2021



*Emergency Department (ED) Discharge refers to treatment at an ED facility in San Diego County.
 Rates per 100,000 residents; not calculated for <11 cases.
 Sources: California Department of Health Care Access and Information (HCAI), 2021 Emergency Department Discharge database. Population Estimates, 2021 (v09/2022) were derived using the 2010 Census and should be considered preliminary.

Maps & Analysis by County of San Diego, Health and Human Services Agency, Public Health Services, Community Health Statistics Unit.
 Contact 619.692.6672. https://www.sandiegocounty.gov/hhsa/programs/phs/community_health_statistics/.
 August, 2023.
 LiveWellSD.org.



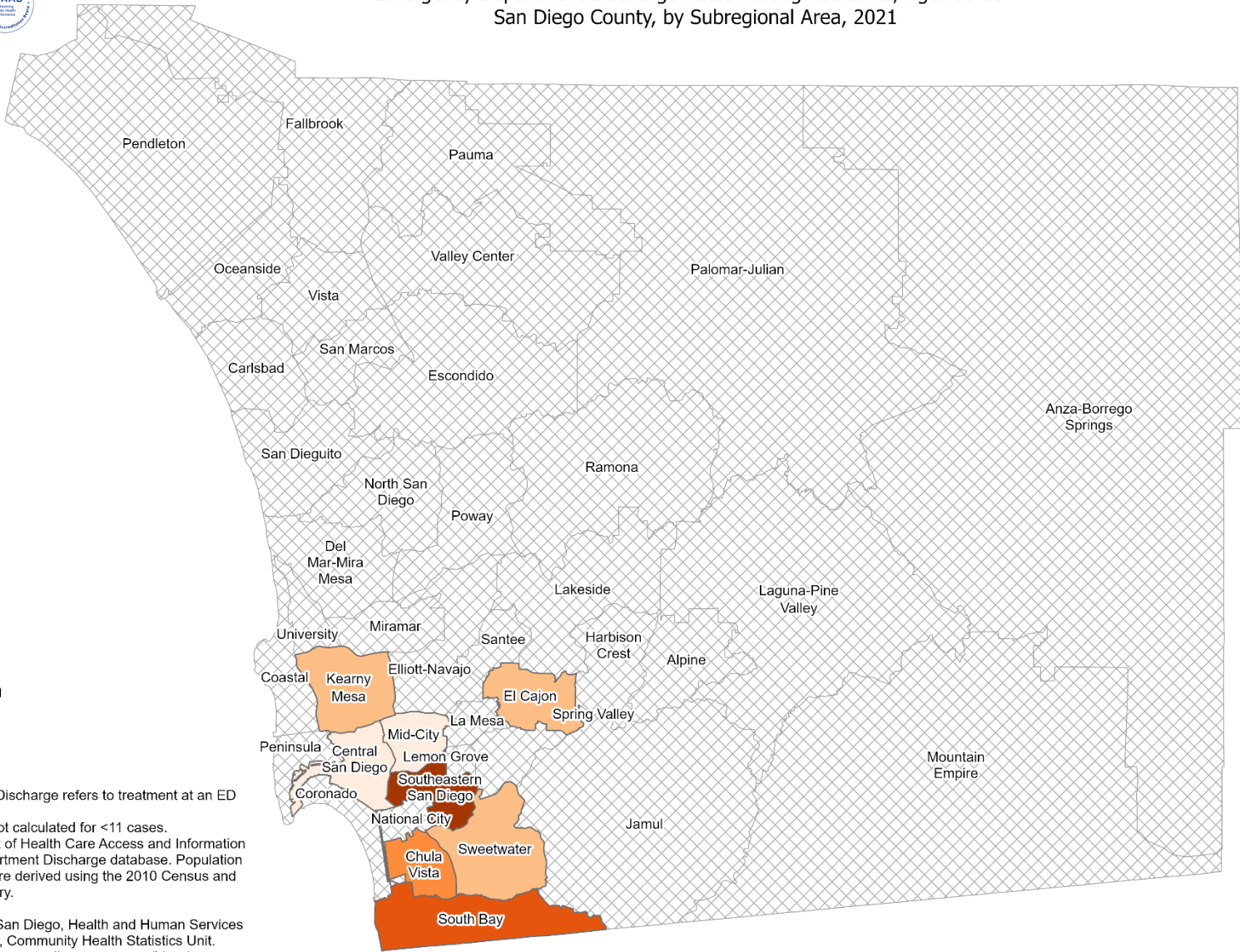


Emergency Department Discharge Rates Among Residents, Ages 50-59* San Diego County, by Subregional Area, 2021



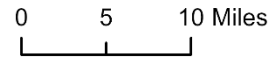
Overall Cancer

- 48.5 - 63.6
- 63.7 - 78.8
- 78.9 - 94.0
- 94.1 - 109.1
- 109.2 - 124.3
- Data not shown



*Emergency Department (ED) Discharge refers to treatment at an ED facility in San Diego County.
 Rates per 100,000 residents; not calculated for <11 cases.
 Sources: California Department of Health Care Access and Information (HCAI), 2021 Emergency Department Discharge database. Population Estimates, 2021 (v09/2022) were derived using the 2010 Census and should be considered preliminary.

Maps & Analysis by County of San Diego, Health and Human Services Agency, Public Health Services, Community Health Statistics Unit.
 Contact 619.692.6672. https://www.sandiegocounty.gov/hhsa/programs/phs/community_health_statistics/.
 August, 2023.
 LiveWellSD.org.





Emergency Department Discharge Rates Among Residents, Ages 60-69* San Diego County, by Subregional Area, 2021

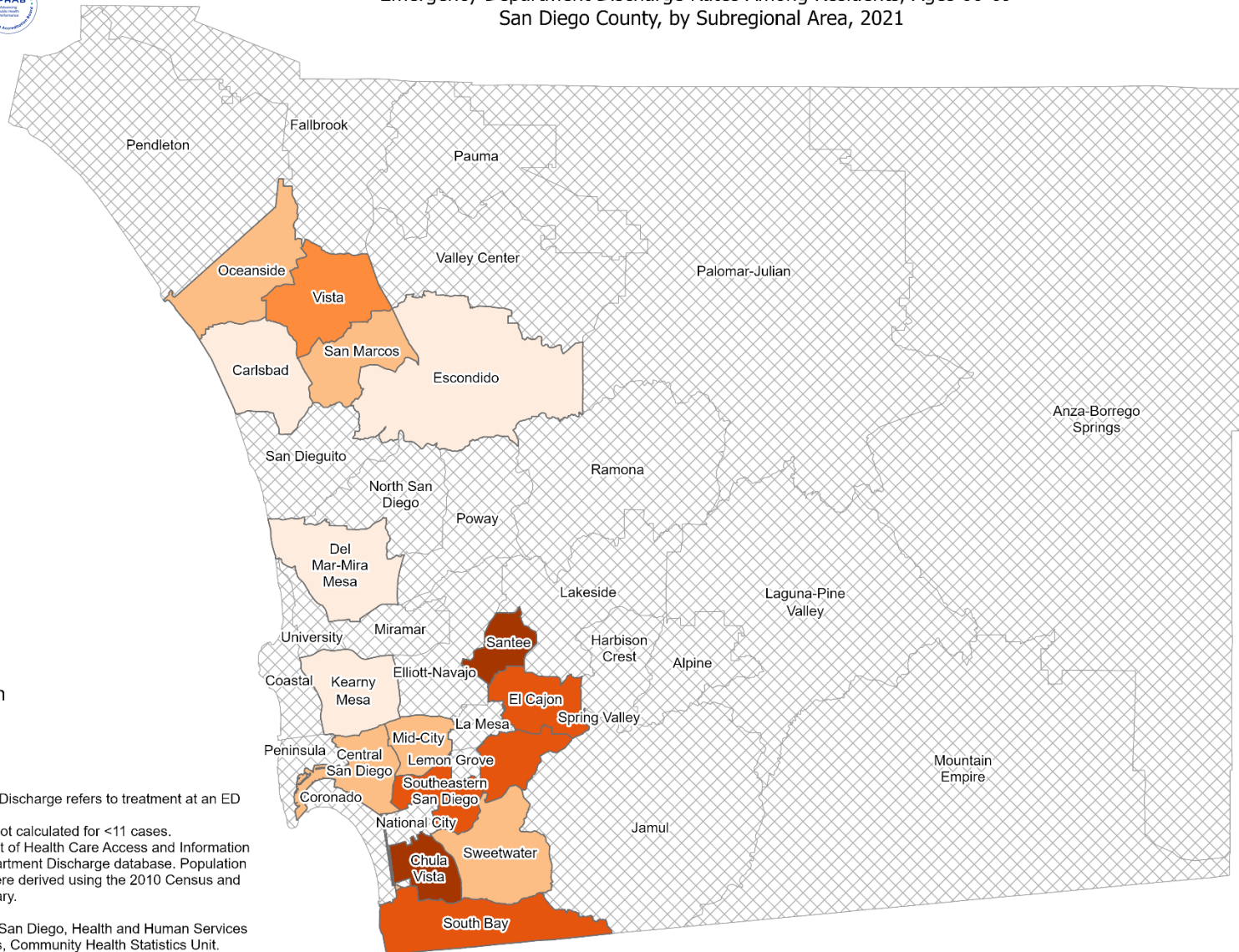


Overall Cancer

- 65.0 - 89.8
- 89.9 - 114.6
- 114.7 - 139.4
- 139.5 - 164.3
- 164.4 - 189.1
- Data not shown

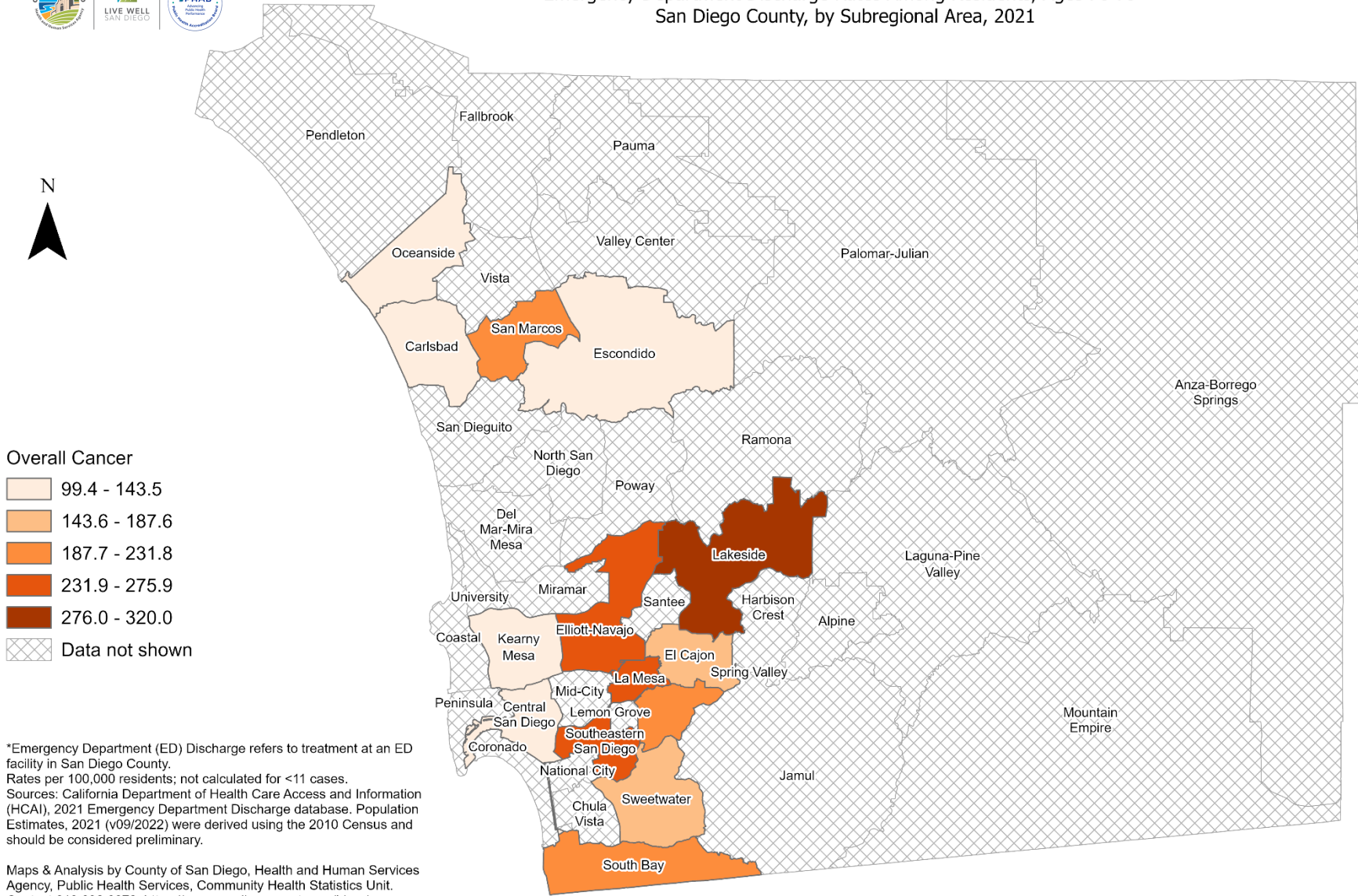
*Emergency Department (ED) Discharge refers to treatment at an ED facility in San Diego County.
Rates per 100,000 residents; not calculated for <11 cases.
Sources: California Department of Health Care Access and Information (HCAI), 2021 Emergency Department Discharge database. Population Estimates, 2021 (v09/2022) were derived using the 2010 Census and should be considered preliminary.

Maps & Analysis by County of San Diego, Health and Human Services Agency, Public Health Services, Community Health Statistics Unit.
Contact 619.692.6672. https://www.sandiegocounty.gov/hhsa/programs/phs/community_health_statistics/.
August, 2023.
LiveWellSD.org.





Emergency Department Discharge Rates Among Residents, Ages 70-79* San Diego County, by Subregional Area, 2021



Overall Cancer

- 99.4 - 143.5
- 143.6 - 187.6
- 187.7 - 231.8
- 231.9 - 275.9
- 276.0 - 320.0
- Data not shown

*Emergency Department (ED) Discharge refers to treatment at an ED facility in San Diego County.
Rates per 100,000 residents; not calculated for <11 cases.
Sources: California Department of Health Care Access and Information (HCAI), 2021 Emergency Department Discharge database. Population Estimates, 2021 (v09/2022) were derived using the 2010 Census and should be considered preliminary.

Maps & Analysis by County of San Diego, Health and Human Services Agency, Public Health Services, Community Health Statistics Unit.
Contact 619.692.6672. https://www.sandiegocounty.gov/hhsa/programs/phs/community_health_statistics/.
August, 2023.
LiveWellSD.org.





Emergency Department Discharge Rates Among Residents, Ages 80+* San Diego County, by Subregional Area, 2021

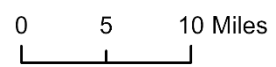
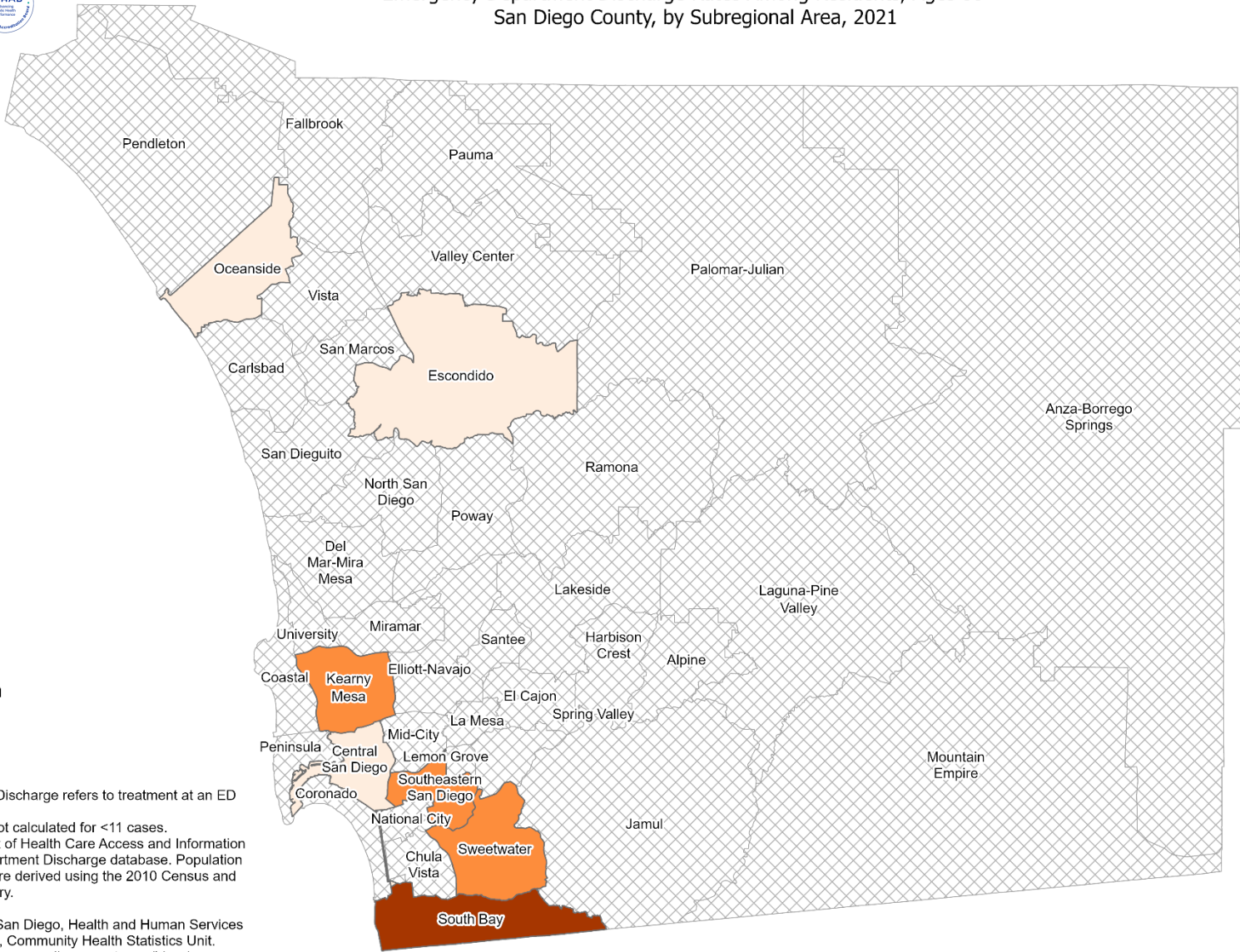


Overall Cancer

- 160.3 - 211.7
- 211.8 - 263.2
- 263.3 - 314.6
- 314.7 - 366.1
- 366.2 - 417.5
- Data not shown

*Emergency Department (ED) Discharge refers to treatment at an ED facility in San Diego County.
Rates per 100,000 residents; not calculated for <11 cases.
Sources: California Department of Health Care Access and Information (HCAI), 2021 Emergency Department Discharge database. Population Estimates, 2021 (v09/2022) were derived using the 2010 Census and should be considered preliminary.

Maps & Analysis by County of San Diego, Health and Human Services Agency, Public Health Services, Community Health Statistics Unit.
Contact 619.692.6672. https://www.sandiegocounty.gov/hhsa/programs/phs/community_health_statistics/.
August, 2023.
LiveWellSD.org.



SECTION 4



In-Patient Treatment (IPT) Rates Among San Diego County Residents by Demographics, 2021:

-
-
-
-
-

- Total Rate
 - Race/Ethnicity
 - Asian/Pacific Islander (API)
 - Black
 - Hispanic
 - White
 - Age Group
 - 0-9 Years
 - 10-19 Years
 - 20-29 Years
 - 30-39 Years
 - 40-49 Years
 - 50-59 Years
 - 60-69 Years
 - 70-79 Years
 - 80+ Years

**No SRA-level rate data
available for this section.**