



2021 MAP ATLAS

Poisoning

AUGUST 2023



County of San Diego | Health and Human Services Agency | Public Health Services | Community Health Statistics Unit



Data Sources

Death* is based on underlying cause of death among San Diego County residents. Rates calculated per 100,000 residents. Rates not calculated for < 11 cases. Maps not produced for conditions/outcomes with no SRA-level rates. Some sections may have no maps.

Sources: California Department of Public Health, Center for Health Statistics, Office of Health Information and Research, Vital Records Business Intelligence System (VRBIS), 2021. ***The COVID-19 pandemic was associated with increases in all-cause mortality. COVID-19 deaths have affected the patterns of mortality.*** SANDAG: San Diego Association of Governments (SANDAG) Population Estimates, 2021 (v09/2022). ***Population estimates for 2021 were derived using the 2010 Census and data should be considered preliminary.***

*For substance/drug overdoses, death rate is based on the multiple/contributing cause of death among San Diego County residents.

Hospitalization refers to treatment at a general acute care facility in San Diego County. Rates calculated per 100,000 residents. Rates not calculated for < 11 cases. Maps not produced for conditions/outcomes with no SRA-level rates. Some sections may have no maps.

Sources: California Department of Health Care Access and Information (HCAI), Patient Discharge Database, 2021. San Diego Association of Governments (SANDAG) Population Estimates, 2021 (v09/2022). ***Population estimates for 2021 were derived using the 2010 Census and data should be considered preliminary.***

Emergency Department (ED) Discharge refers to treatment at an ED facility in San Diego County.

Rates calculated per 100,000 residents. Rates not calculated for < 11 cases. Maps not produced for conditions/outcomes with no SRA-level rates. Some sections may have no maps.

Sources: California Department of Health Care Access and Information (HCAI), Emergency Department Discharge Database, 2021. San Diego Association of Governments (SANDAG) Population Estimates, 2021 (v09/2022). ***Population estimates for 2021 were derived using the 2010 Census and data should be considered preliminary.***

In-Patient Treatment (IPT) refers to treatment at a psychiatric care or chemical rehabilitation facility in San Diego County. Rates calculated per 100,000 residents. Rates not calculated for < 11 cases. Maps not produced for conditions/outcomes with no SRA-level rates. Some sections may have no maps.

Sources: California Department of Health Care Access and Information (HCAI), Patient Discharge Database, 2021. San Diego Association of Governments (SANDAG) Population Estimates, 2021 (v09/2022). ***Population estimates for 2021 were derived using the 2010 Census and data should be considered preliminary.***

Maps & Analysis by County of San Diego, Health and Human Services Agency, Public Health Services, Community Health Statistics Unit. Contact 619.692.6672. August 2023.

https://www.sandiegocounty.gov/hhsa/programs/phs/community_health_statistics/LiveWellSD.org.

For more detailed explanation of geography, methods, and sources, please refer to CHSU's [2020 Community Profiles Data Guide and Data Dictionary Dashboards](#).

Table of Contents

Section 1: Deaths	1
Section 2: Hospitalizations	11
Section 3: Emergency Department (ED) Discharges	24
Section 4: In-Patient Treatments (IPT).....	37

SECTION 1



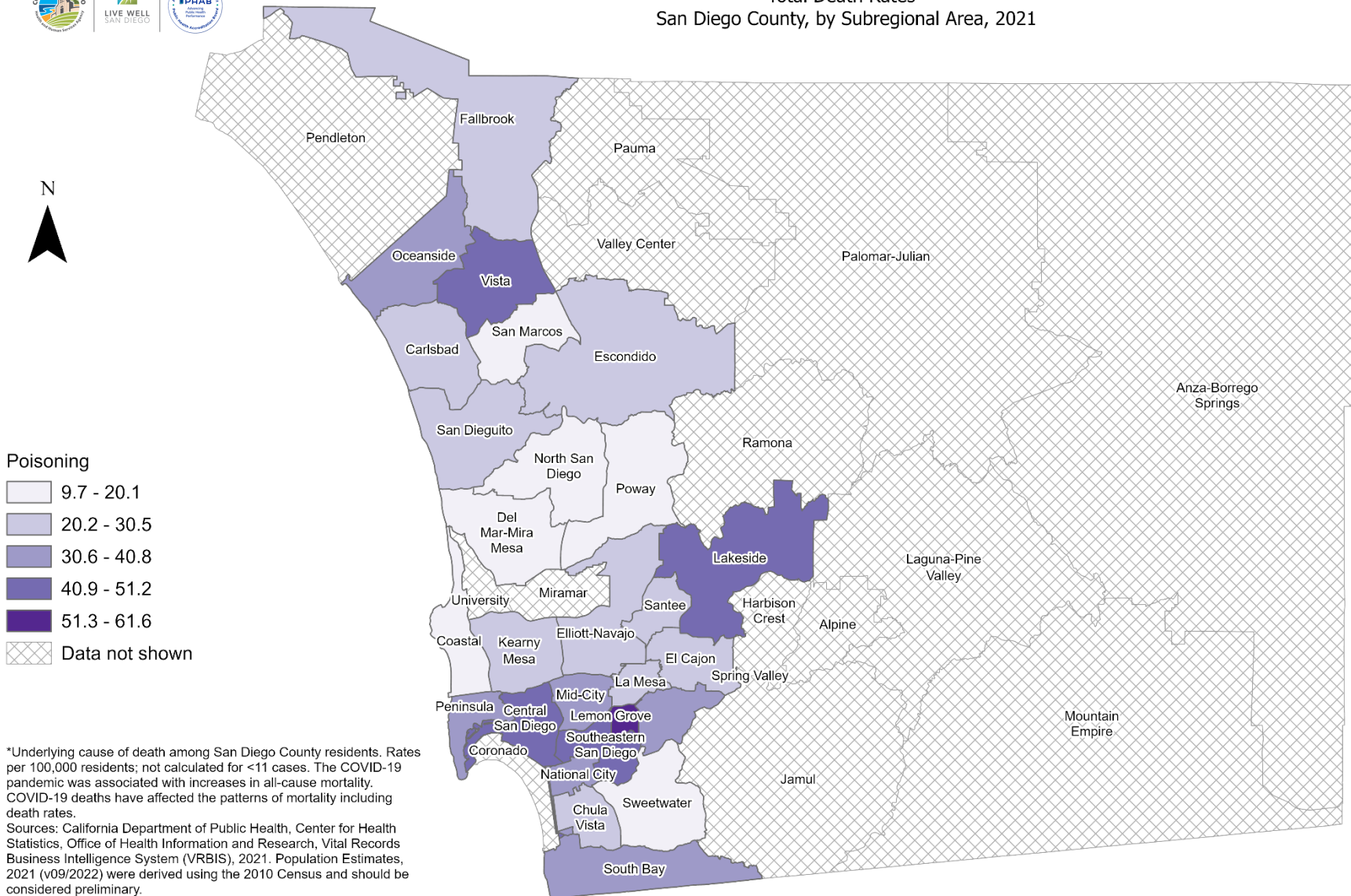
Death Rates Among San Diego County Residents by Demographics, 2021:

- Total Rate
 - Race/Ethnicity
 - Asian/Pacific Islander (API)
 - Black
 - Hispanic
 - White
 - Age Group
 - 0-9 Years
 - 10-19 Years
 - 20-29 Years
 - 30-39 Years
 - 40-49 Years
 - 50-59 Years
 - 60-69 Years
 - 70-79 Years
 - 80+ Years



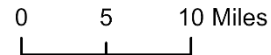


Total Death Rates* San Diego County, by Subregional Area, 2021



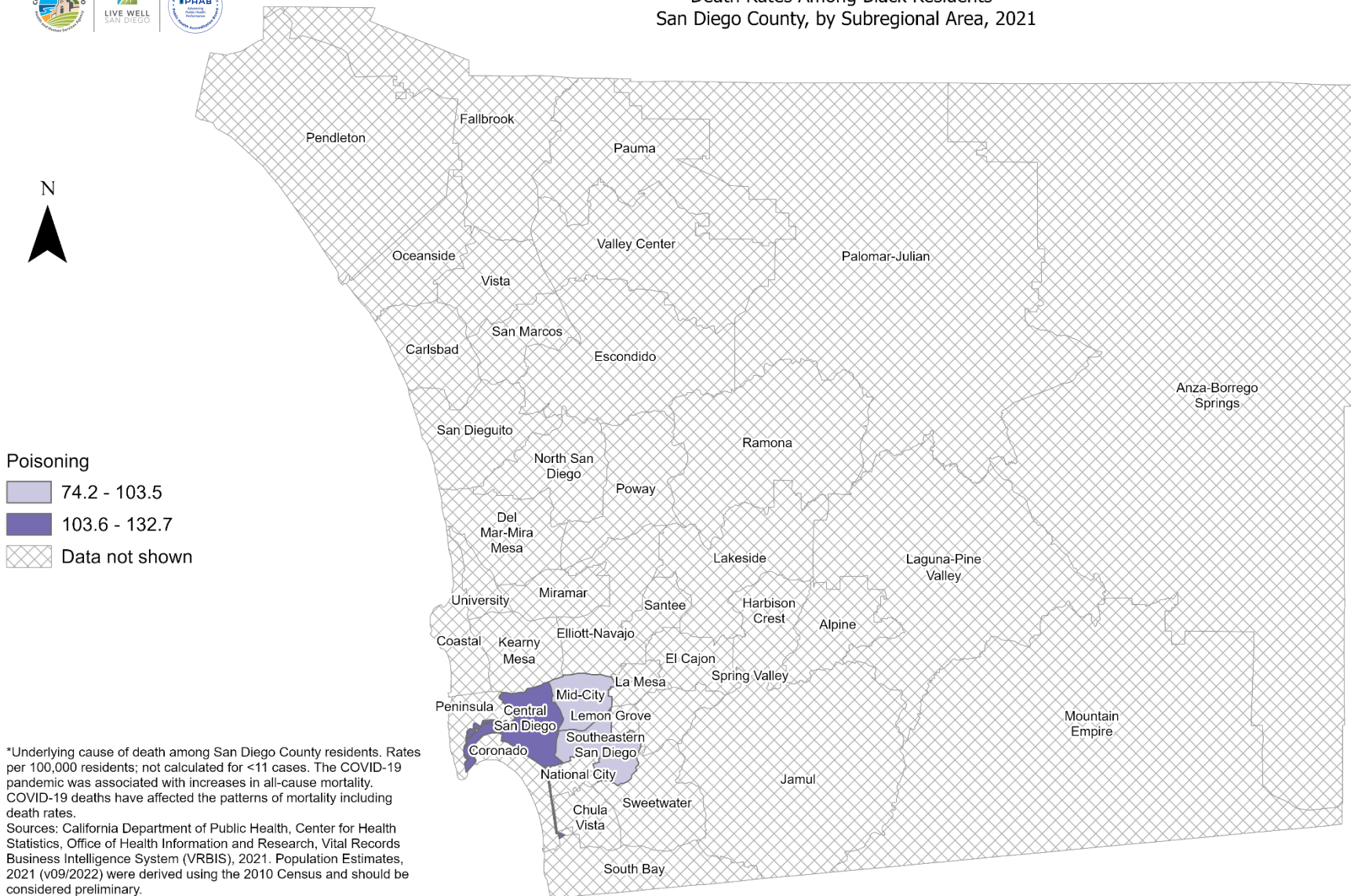
*Underlying cause of death among San Diego County residents. Rates per 100,000 residents; not calculated for <11 cases. The COVID-19 pandemic was associated with increases in all-cause mortality. COVID-19 deaths have affected the patterns of mortality including death rates.
Sources: California Department of Public Health, Center for Health Statistics, Office of Health Information and Research, Vital Records Business Intelligence System (VRBIS), 2021. Population Estimates, 2021 (v09/2022) were derived using the 2010 Census and should be considered preliminary.

Maps & Analysis by County of San Diego, Health and Human Services Agency, Public Health Services, Community Health Statistics Unit.
Contact 619.692.6672.
https://www.sandiegocounty.gov/hhsa/programs/phs/community_health_statistics/
August, 2023.
LiveWellSD.org.

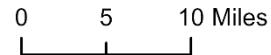




Death Rates Among Black Residents* San Diego County, by Subregional Area, 2021

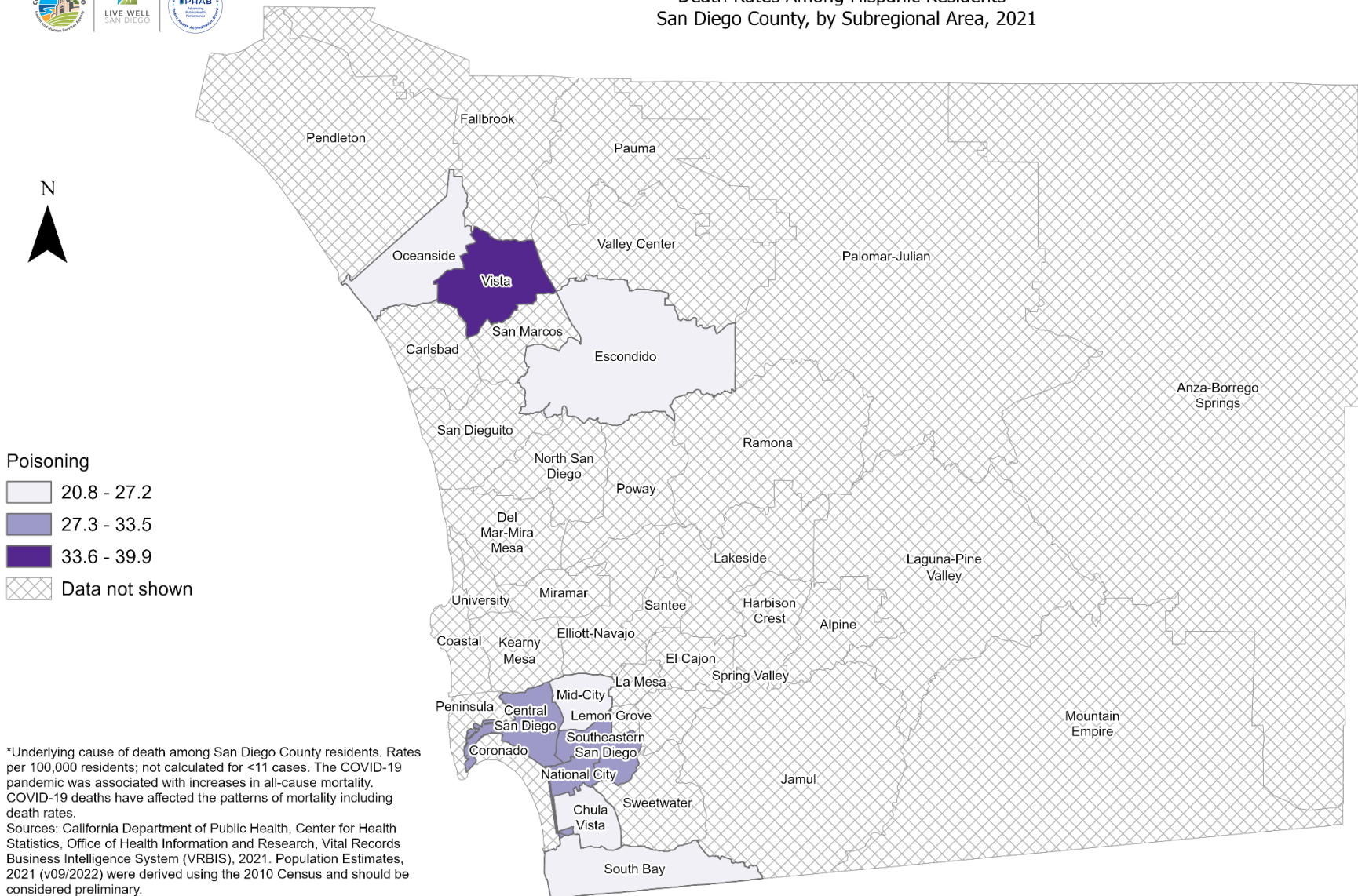


Maps & Analysis by County of San Diego, Health and Human Services Agency, Public Health Services, Community Health Statistics Unit.
Contact 619.692.6672.
https://www.sandiegocounty.gov/hhsa/programs/phs/community_health_statistics/
August, 2023.
LiveWellSD.org.





Death Rates Among Hispanic Residents* San Diego County, by Subregional Area, 2021



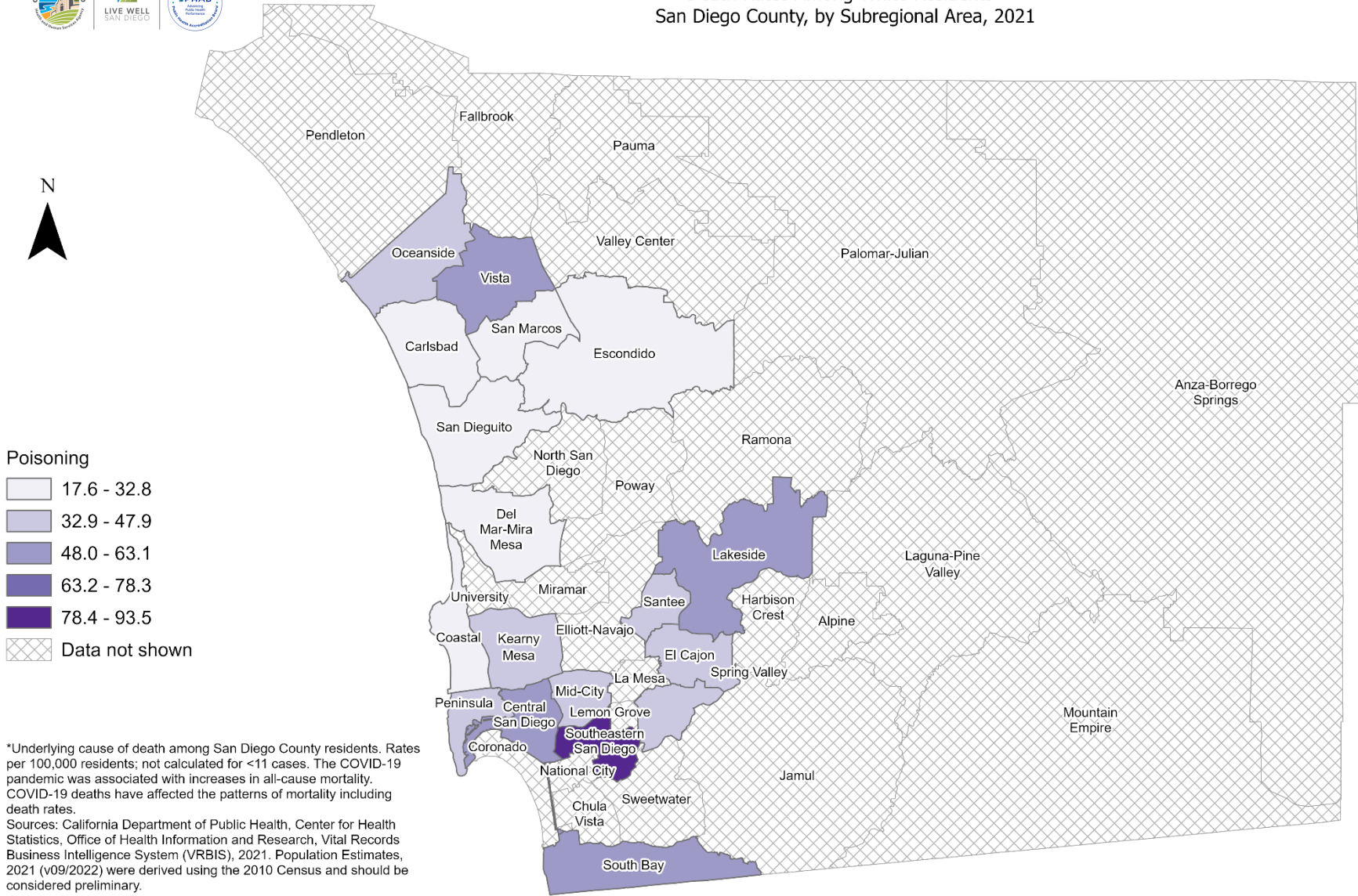
Maps & Analysis by County of San Diego, Health and Human Services Agency, Public Health Services, Community Health Statistics Unit.
Contact 619.692.6672.
https://www.sandiegocounty.gov/hhsa/programs/phs/community_health_statistics/
August, 2023.
LiveWellSD.org.

0 5 10 Miles





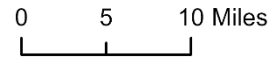
Death Rates Among White Residents* San Diego County, by Subregional Area, 2021



- Poisoning**
- 17.6 - 32.8
 - 32.9 - 47.9
 - 48.0 - 63.1
 - 63.2 - 78.3
 - 78.4 - 93.5
 - Data not shown

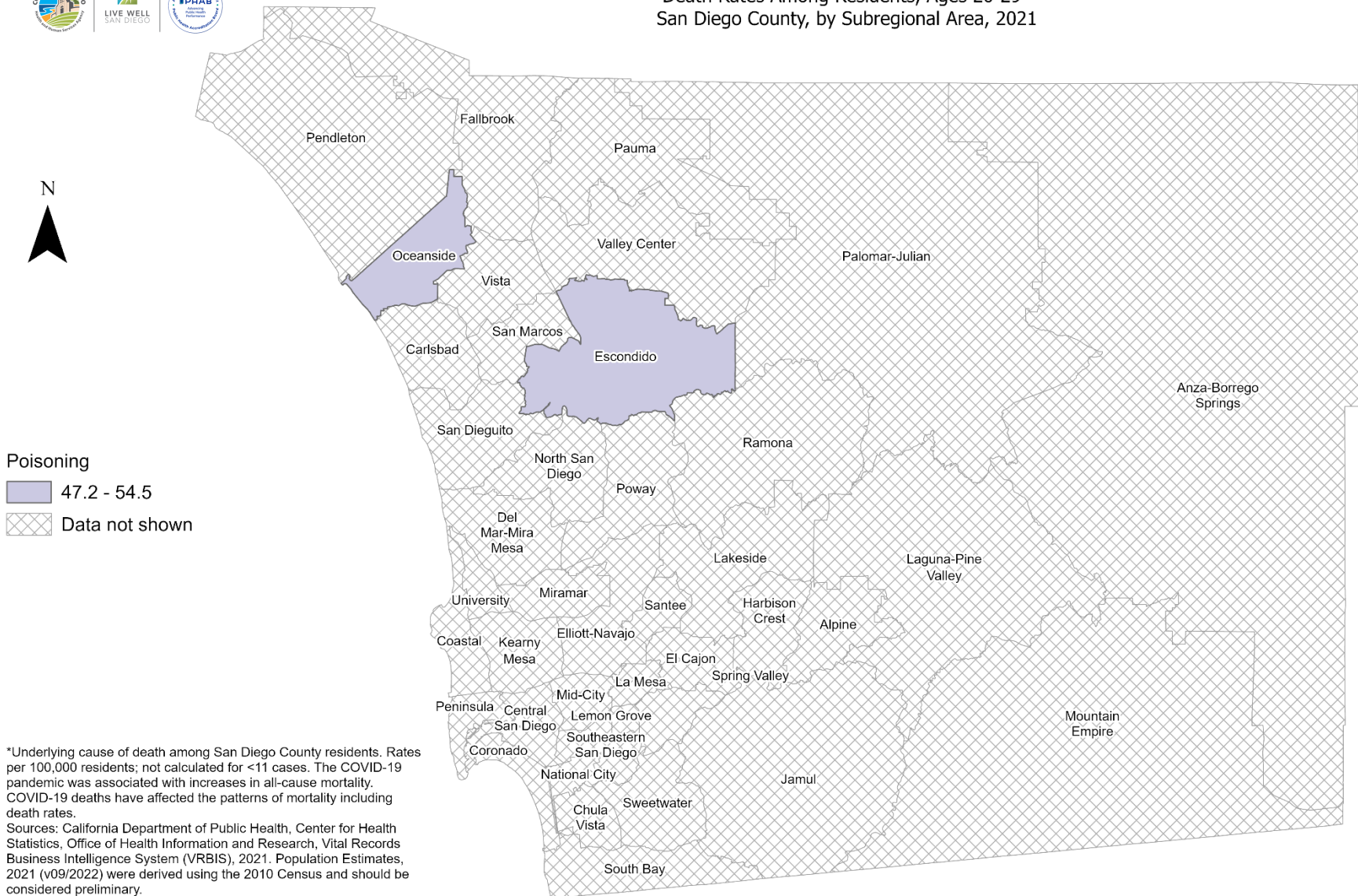
*Underlying cause of death among San Diego County residents. Rates per 100,000 residents; not calculated for <11 cases. The COVID-19 pandemic was associated with increases in all-cause mortality. COVID-19 deaths have affected the patterns of mortality including death rates.
 Sources: California Department of Public Health, Center for Health Statistics, Office of Health Information and Research, Vital Records Business Intelligence System (VRBIS), 2021. Population Estimates, 2021 (v09/2022) were derived using the 2010 Census and should be considered preliminary.

Maps & Analysis by County of San Diego, Health and Human Services Agency, Public Health Services, Community Health Statistics Unit.
 Contact 619.692.6672.
https://www.sandiegocounty.gov/hhsa/programs/phs/community_health_statistics/
 August, 2023.
 LiveWellSD.org.



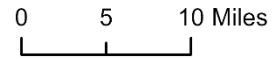


Death Rates Among Residents, Ages 20-29* San Diego County, by Subregional Area, 2021



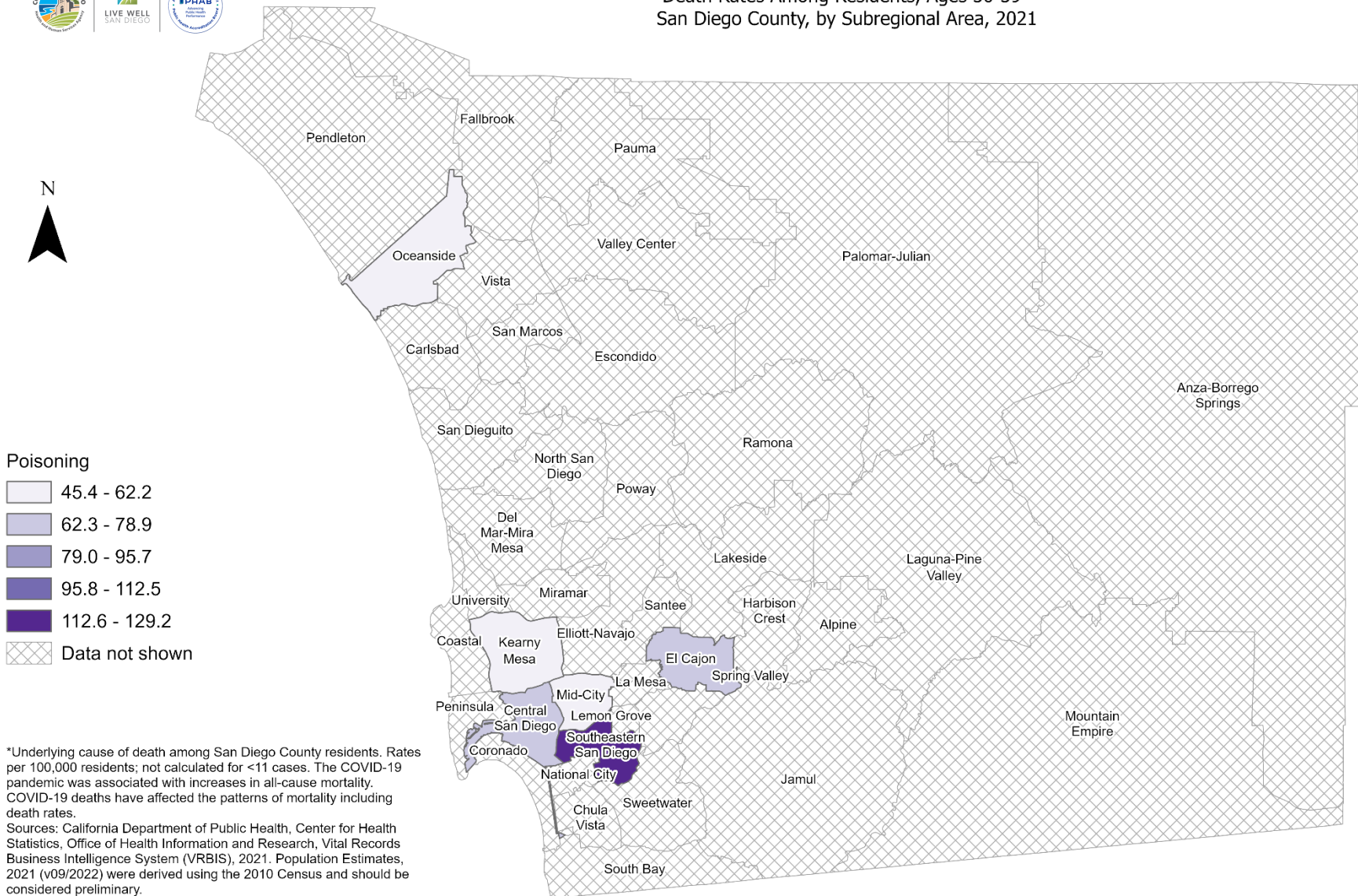
*Underlying cause of death among San Diego County residents. Rates per 100,000 residents; not calculated for <11 cases. The COVID-19 pandemic was associated with increases in all-cause mortality. COVID-19 deaths have affected the patterns of mortality including death rates.
Sources: California Department of Public Health, Center for Health Statistics, Office of Health Information and Research, Vital Records Business Intelligence System (VRBIS), 2021. Population Estimates, 2021 (v09/2022) were derived using the 2010 Census and should be considered preliminary.

Maps & Analysis by County of San Diego, Health and Human Services Agency, Public Health Services, Community Health Statistics Unit.
Contact 619.692.6672.
https://www.sandiegocounty.gov/hhsa/programs/phs/community_health_statistics/
August, 2023.
LiveWellSD.org.



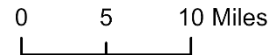


Death Rates Among Residents, Ages 30-39* San Diego County, by Subregional Area, 2021



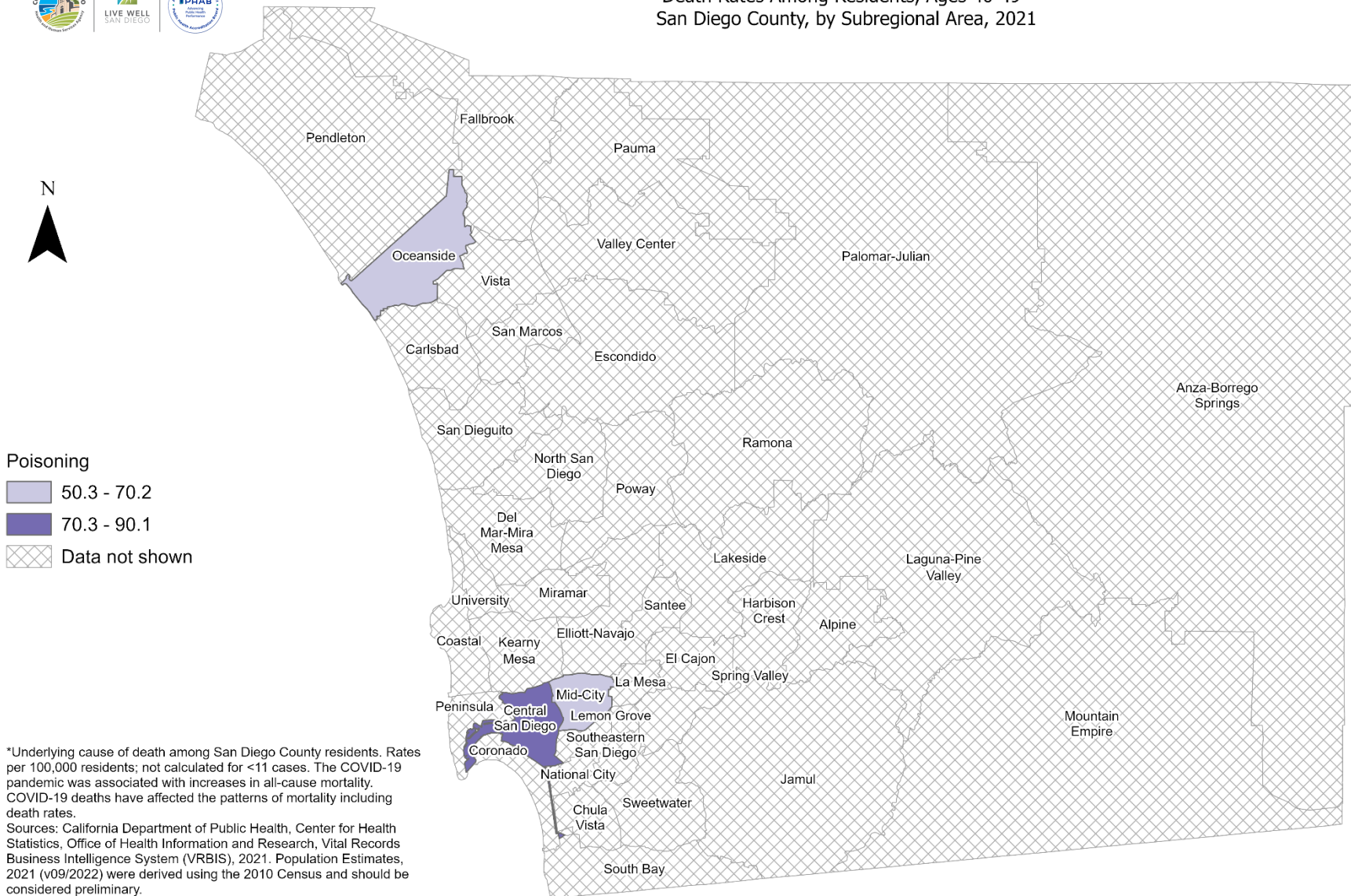
*Underlying cause of death among San Diego County residents. Rates per 100,000 residents; not calculated for <11 cases. The COVID-19 pandemic was associated with increases in all-cause mortality. COVID-19 deaths have affected the patterns of mortality including death rates.
Sources: California Department of Public Health, Center for Health Statistics, Office of Health Information and Research, Vital Records Business Intelligence System (VRBIS), 2021. Population Estimates, 2021 (v09/2022) were derived using the 2010 Census and should be considered preliminary.

Maps & Analysis by County of San Diego, Health and Human Services Agency, Public Health Services, Community Health Statistics Unit.
Contact 619.692.6672.
https://www.sandiegocounty.gov/hhsa/programs/phs/community_health_statistics/
August, 2023.
LiveWellSD.org.





Death Rates Among Residents, Ages 40-49* San Diego County, by Subregional Area, 2021

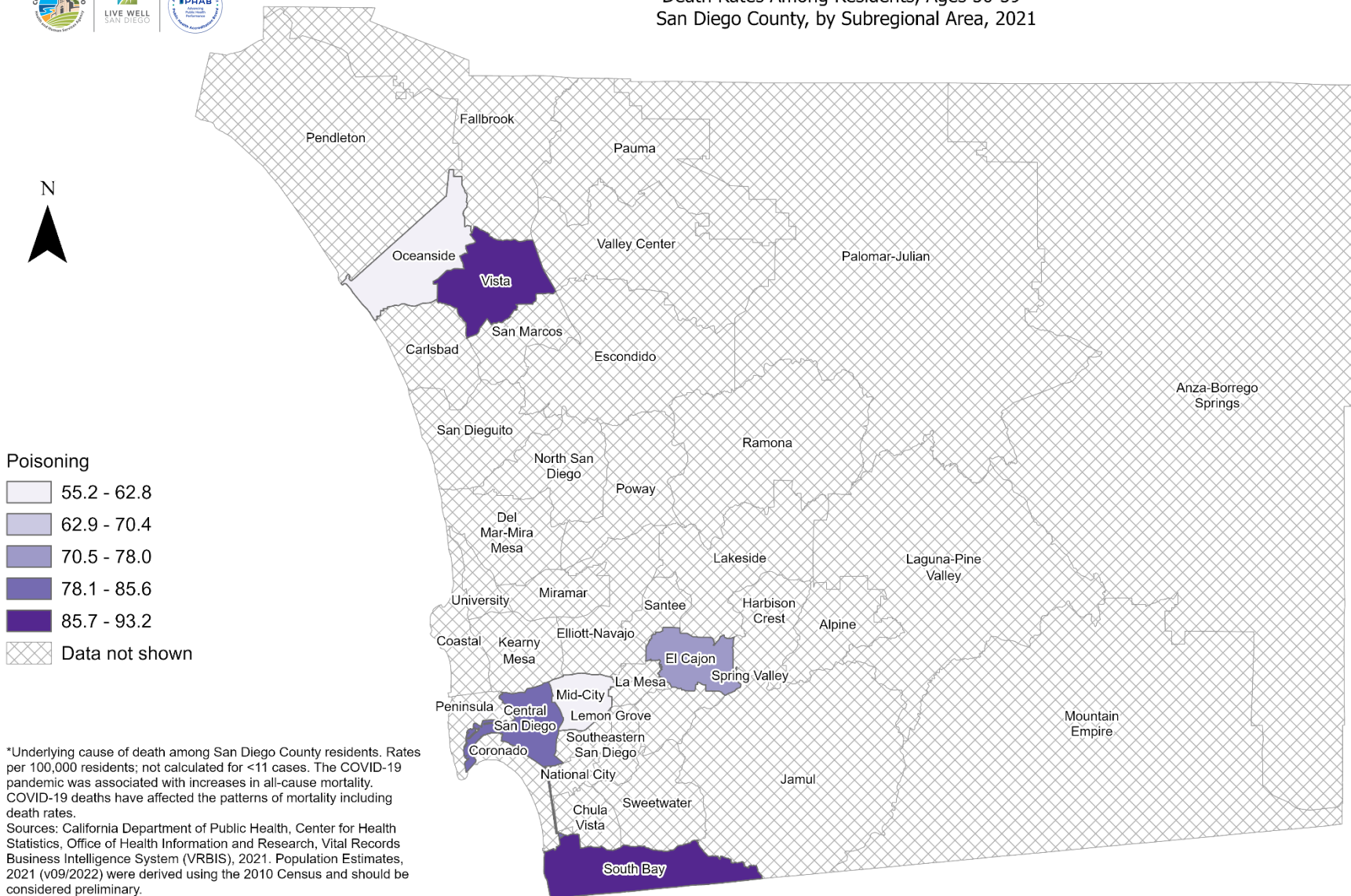


Maps & Analysis by County of San Diego, Health and Human Services Agency, Public Health Services, Community Health Statistics Unit. Contact 619.692.6672.
https://www.sandiegocounty.gov/hhsa/programs/phs/community_health_statistics/
 August, 2023.
 LiveWellSD.org.





Death Rates Among Residents, Ages 50-59* San Diego County, by Subregional Area, 2021



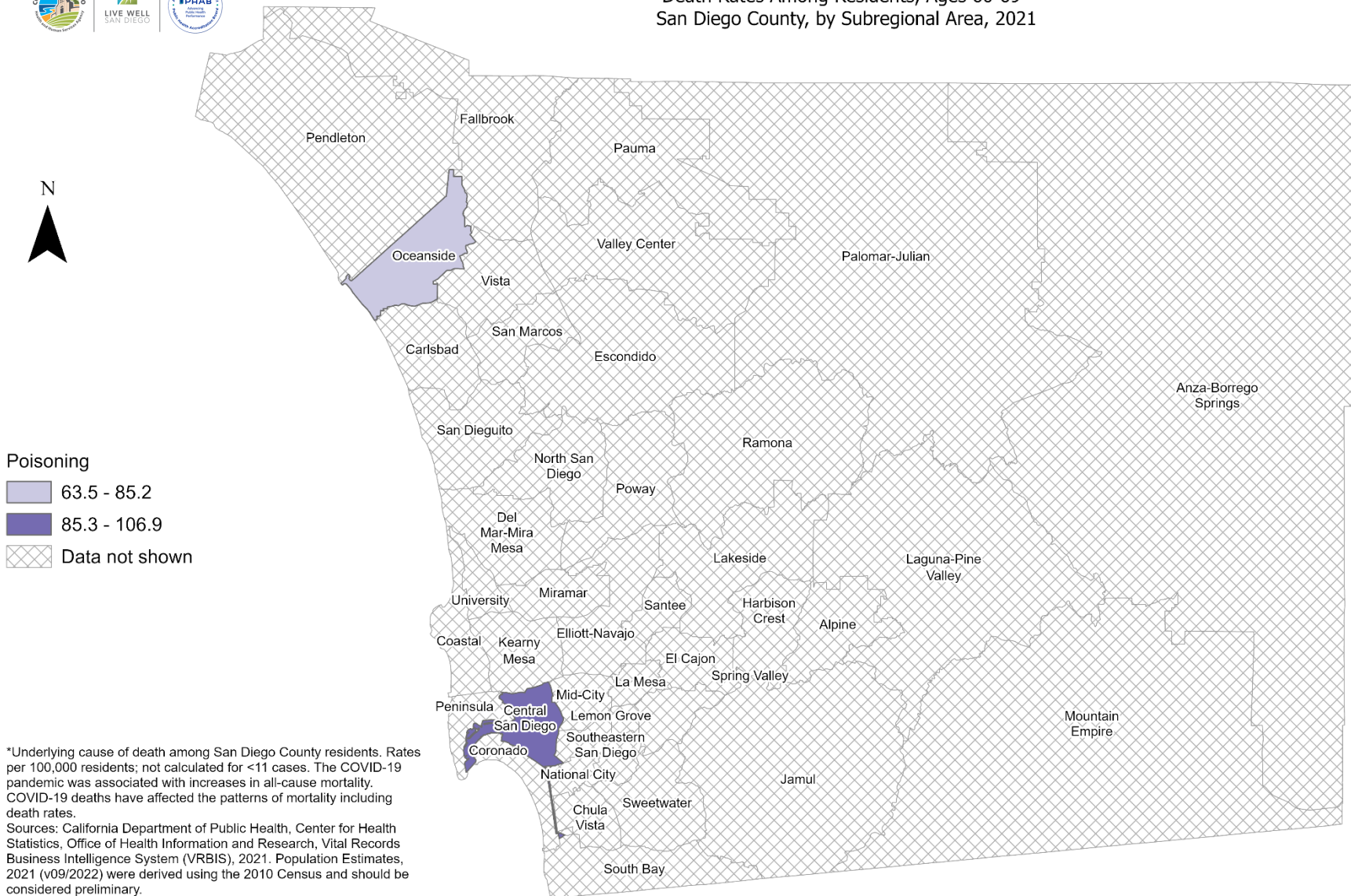
*Underlying cause of death among San Diego County residents. Rates per 100,000 residents; not calculated for <11 cases. The COVID-19 pandemic was associated with increases in all-cause mortality. COVID-19 deaths have affected the patterns of mortality including death rates.
Sources: California Department of Public Health, Center for Health Statistics, Office of Health Information and Research, Vital Records Business Intelligence System (VRBIS), 2021. Population Estimates, 2021 (v09/2022) were derived using the 2010 Census and should be considered preliminary.

Maps & Analysis by County of San Diego, Health and Human Services Agency, Public Health Services, Community Health Statistics Unit.
Contact 619.692.6672.
https://www.sandiegocounty.gov/hhsa/programs/phs/community_health_statistics/
August, 2023.
LiveWellSD.org.



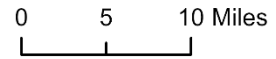


Death Rates Among Residents, Ages 60-69* San Diego County, by Subregional Area, 2021



*Underlying cause of death among San Diego County residents. Rates per 100,000 residents; not calculated for <11 cases. The COVID-19 pandemic was associated with increases in all-cause mortality. COVID-19 deaths have affected the patterns of mortality including death rates.
Sources: California Department of Public Health, Center for Health Statistics, Office of Health Information and Research, Vital Records Business Intelligence System (VRBIS), 2021. Population Estimates, 2021 (v09/2022) were derived using the 2010 Census and should be considered preliminary.

Maps & Analysis by County of San Diego, Health and Human Services Agency, Public Health Services, Community Health Statistics Unit.
Contact 619.692.6672.
https://www.sandiegocounty.gov/hhsa/programs/phs/community_health_statistics/
August, 2023.
LiveWellSD.org.



SECTION 2

Hospitalization Rates Among San Diego County Residents by Demographics, 2021:

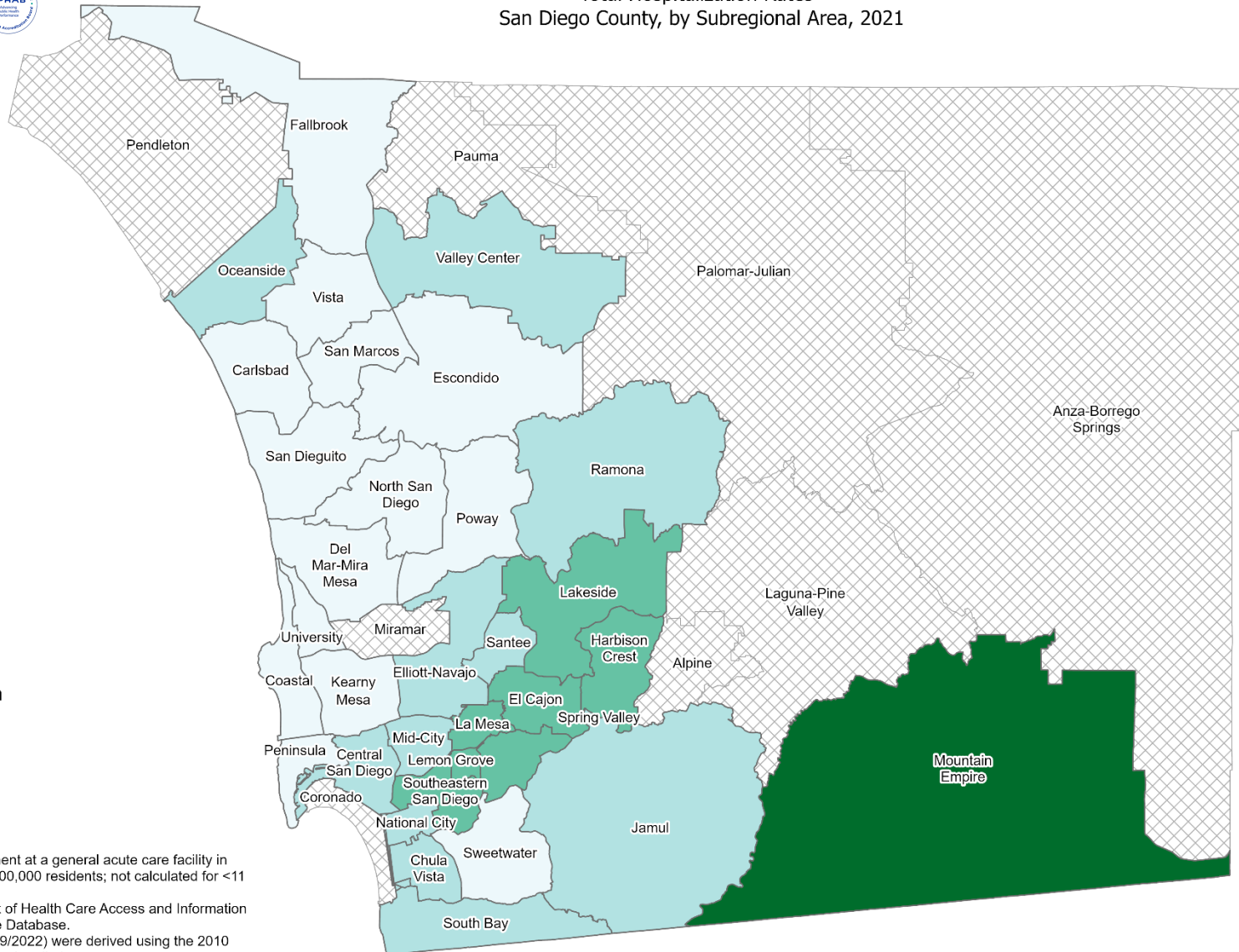
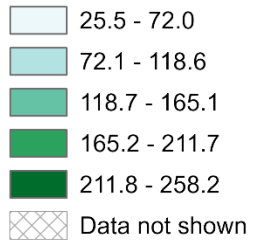
- Total Rate
 - Race/Ethnicity
 - Asian/Pacific Islander (API)
 - Black
 - Hispanic
 - White
 - Age Group
 - 0-9 Years
 - 10-19 Years
 - 20-29 Years
 - 30-39 Years
 - 40-49 Years
 - 50-59 Years
 - 60-69 Years
 - 70-79 Years
 - 80+ Years



Total Hospitalization Rates* San Diego County, by Subregional Area, 2021



Poisoning



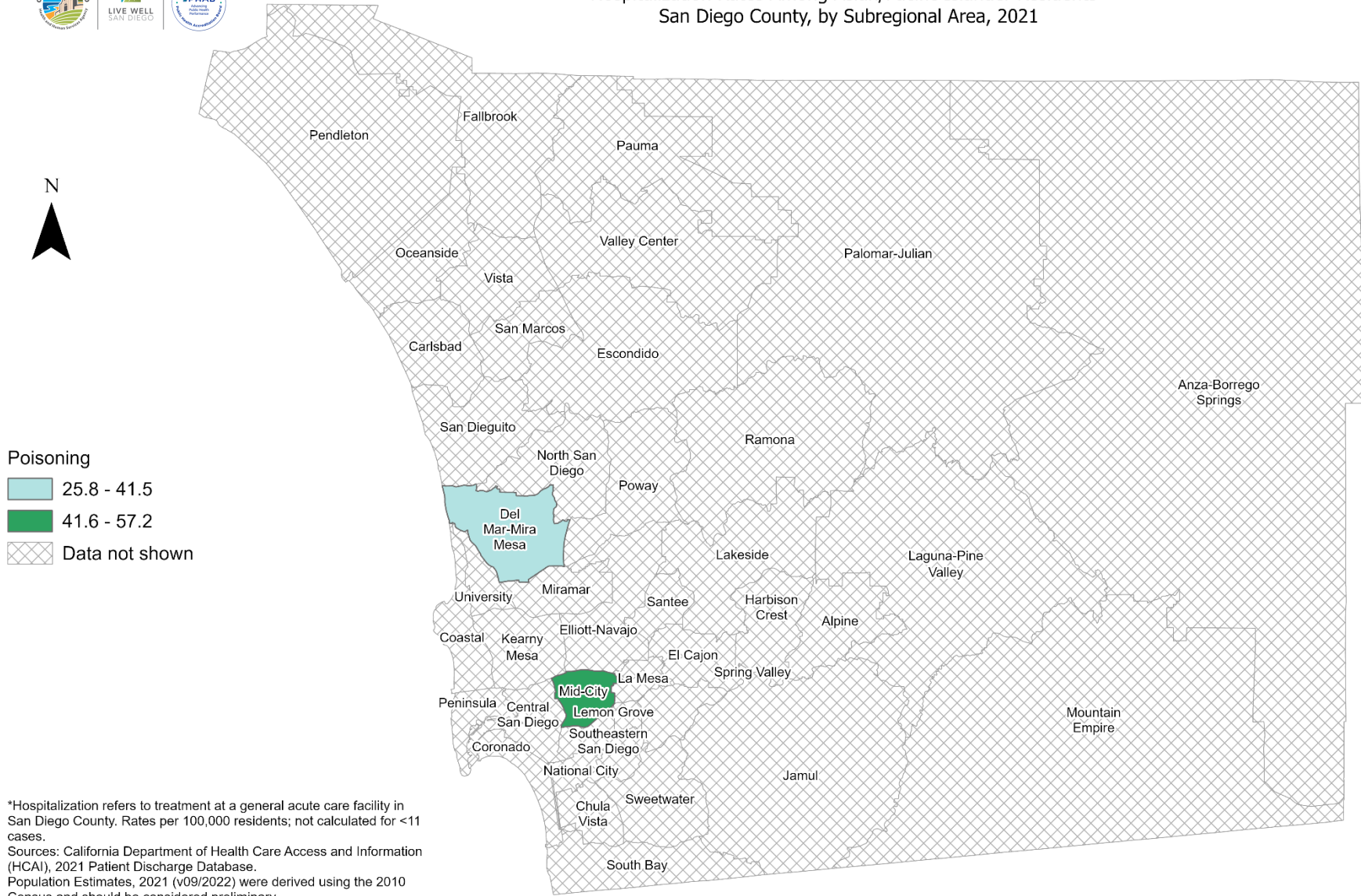
*Hospitalization refers to treatment at a general acute care facility in San Diego County. Rates per 100,000 residents; not calculated for <11 cases.
Sources: California Department of Health Care Access and Information (HCAI), 2021 Patient Discharge Database.
Population Estimates, 2021 (v09/2022) were derived using the 2010 Census and should be considered preliminary.

Maps & Analysis by County of San Diego, Health and Human Services Agency, Public Health Services, Community Health Statistics Unit.
Contact 619.692.6672. https://www.sandiegocounty.gov/hhsa/programs/phs/community_health_statistics/.
August, 2023.
LiveWellSD.org.



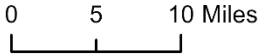


Hospitalization Rates Among Asian/Pacific Islander Residents* San Diego County, by Subregional Area, 2021



*Hospitalization refers to treatment at a general acute care facility in San Diego County. Rates per 100,000 residents; not calculated for <11 cases.
Sources: California Department of Health Care Access and Information (HCAI), 2021 Patient Discharge Database.
Population Estimates, 2021 (v09/2022) were derived using the 2010 Census and should be considered preliminary.

Maps & Analysis by County of San Diego, Health and Human Services Agency, Public Health Services, Community Health Statistics Unit.
Contact 619.692.6672. https://www.sandiegocounty.gov/hhsa/programs/phs/community_health_statistics/.
August, 2023.
LiveWellSD.org.

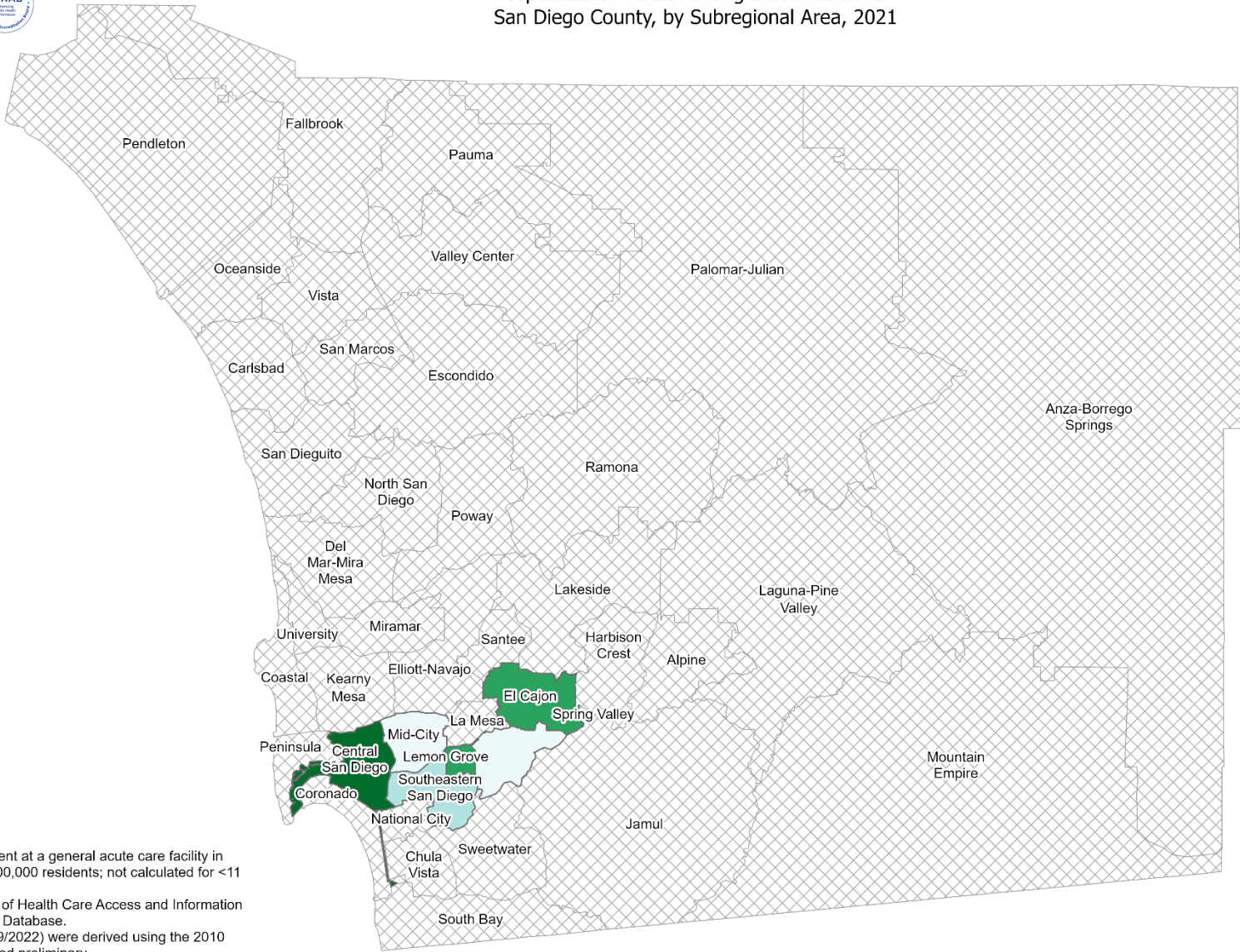
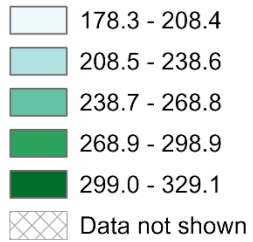




Hospitalization Rates Among Black Residents* San Diego County, by Subregional Area, 2021

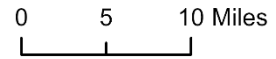


Poisoning



*Hospitalization refers to treatment at a general acute care facility in San Diego County. Rates per 100,000 residents; not calculated for <11 cases.
Sources: California Department of Health Care Access and Information (HCAI), 2021 Patient Discharge Database.
Population Estimates, 2021 (v09/2022) were derived using the 2010 Census and should be considered preliminary.

Maps & Analysis by County of San Diego, Health and Human Services Agency, Public Health Services, Community Health Statistics Unit.
Contact 619.692.6672. https://www.sandiegocounty.gov/hhsa/programs/phs/community_health_statistics/.
August, 2023.
LiveWellSD.org.



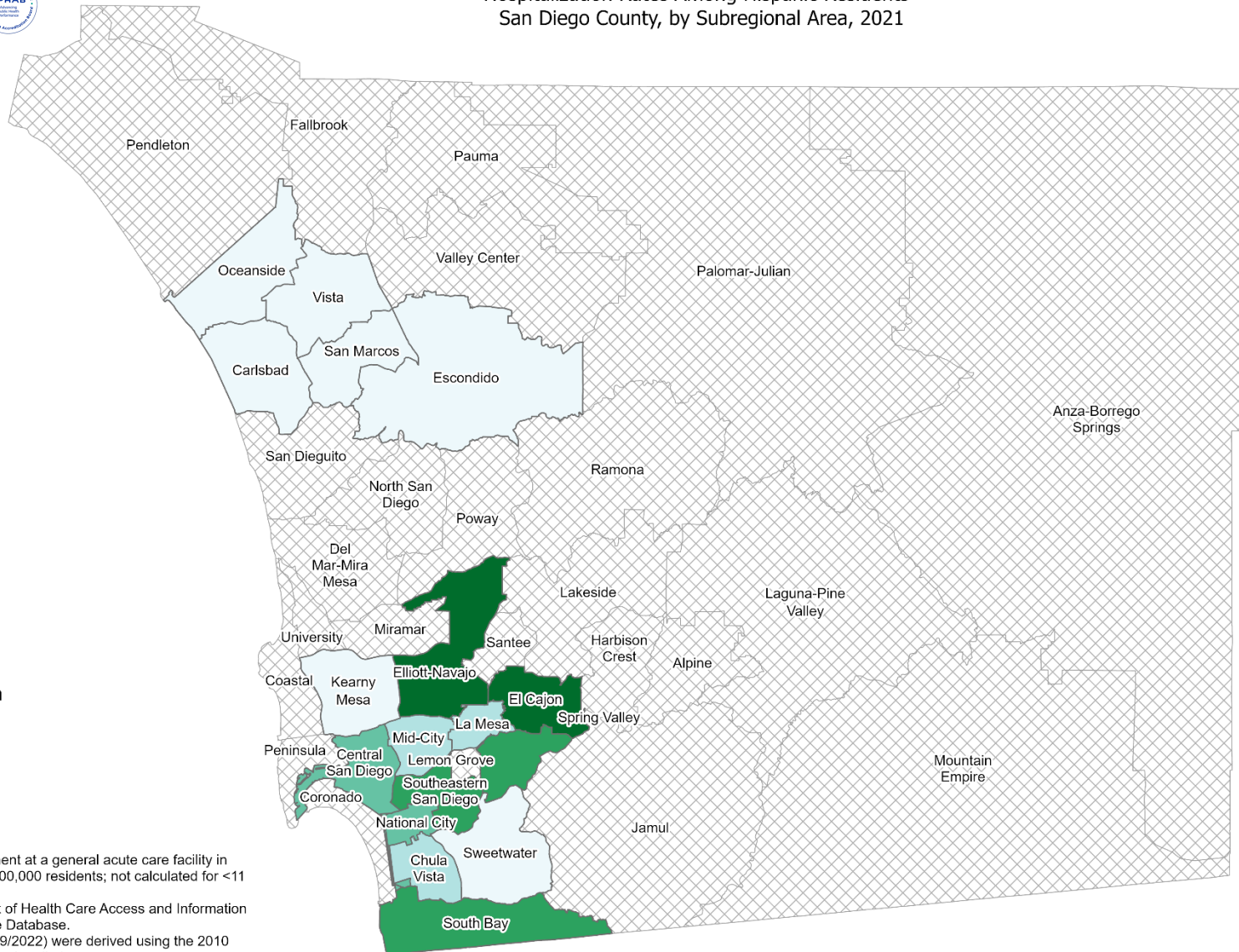


Hospitalization Rates Among Hispanic Residents* San Diego County, by Subregional Area, 2021



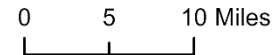
Poisoning

- 40.3 - 58.6
- 58.7 - 76.9
- 77.0 - 95.2
- 95.3 - 113.6
- 113.7 - 131.9
- Data not shown



*Hospitalization refers to treatment at a general acute care facility in San Diego County. Rates per 100,000 residents; not calculated for <11 cases.
Sources: California Department of Health Care Access and Information (HCAI), 2021 Patient Discharge Database.
Population Estimates, 2021 (v09/2022) were derived using the 2010 Census and should be considered preliminary.

Maps & Analysis by County of San Diego, Health and Human Services Agency, Public Health Services, Community Health Statistics Unit.
Contact 619.692.6672. https://www.sandiegocounty.gov/hhsa/programs/phs/community_health_statistics/.
August, 2023.
LiveWellSD.org.

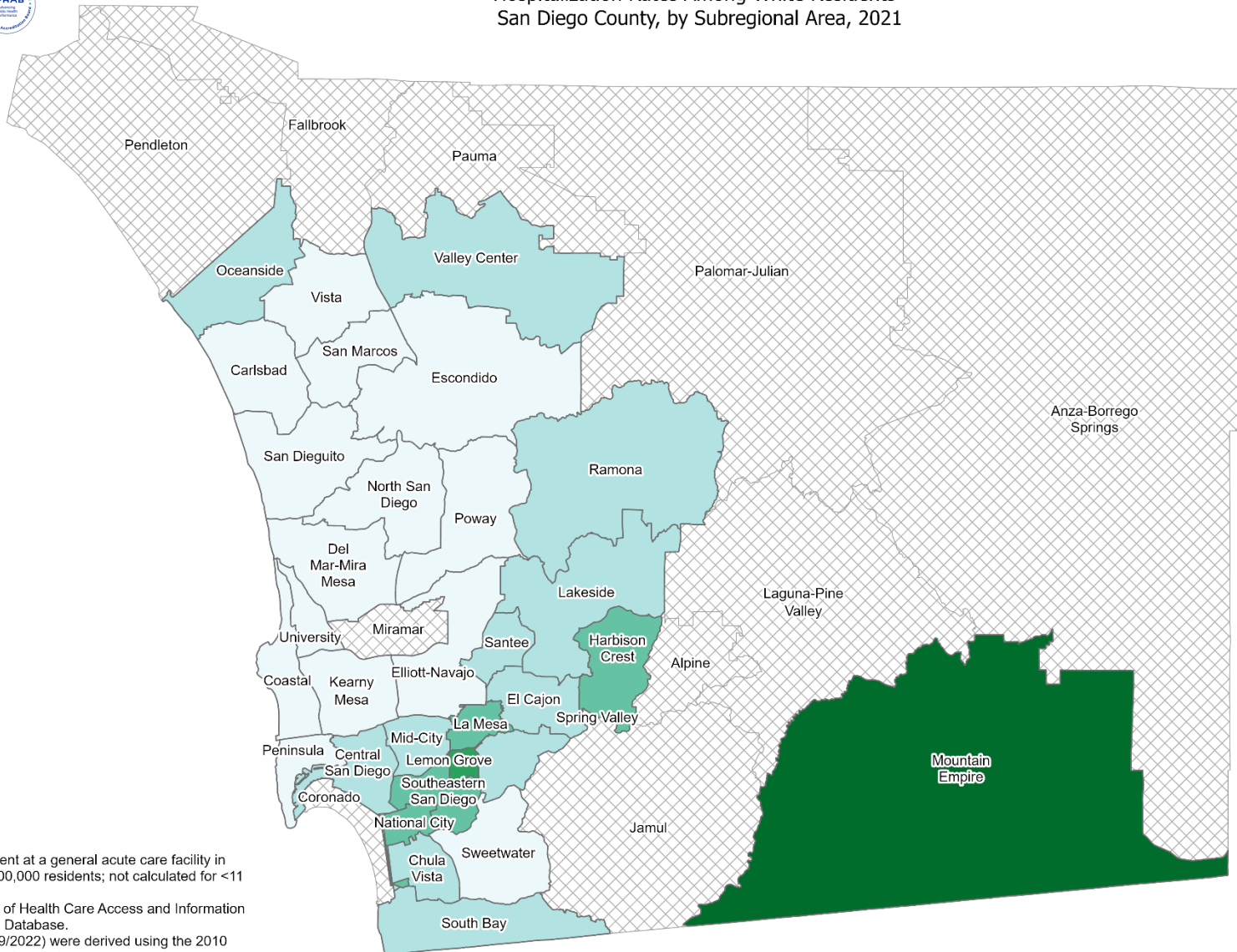
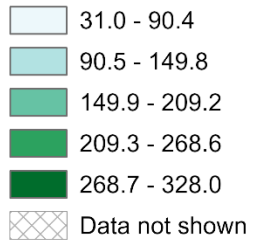




Hospitalization Rates Among White Residents* San Diego County, by Subregional Area, 2021

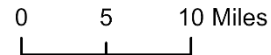


Poisoning



*Hospitalization refers to treatment at a general acute care facility in San Diego County. Rates per 100,000 residents; not calculated for <11 cases.
Sources: California Department of Health Care Access and Information (HCAI), 2021 Patient Discharge Database.
Population Estimates, 2021 (v09/2022) were derived using the 2010 Census and should be considered preliminary.

Maps & Analysis by County of San Diego, Health and Human Services Agency, Public Health Services, Community Health Statistics Unit.
Contact 619.692.6672. https://www.sandiegocounty.gov/hhsa/programs/phs/community_health_statistics/.
August, 2023.
LiveWellSD.org.



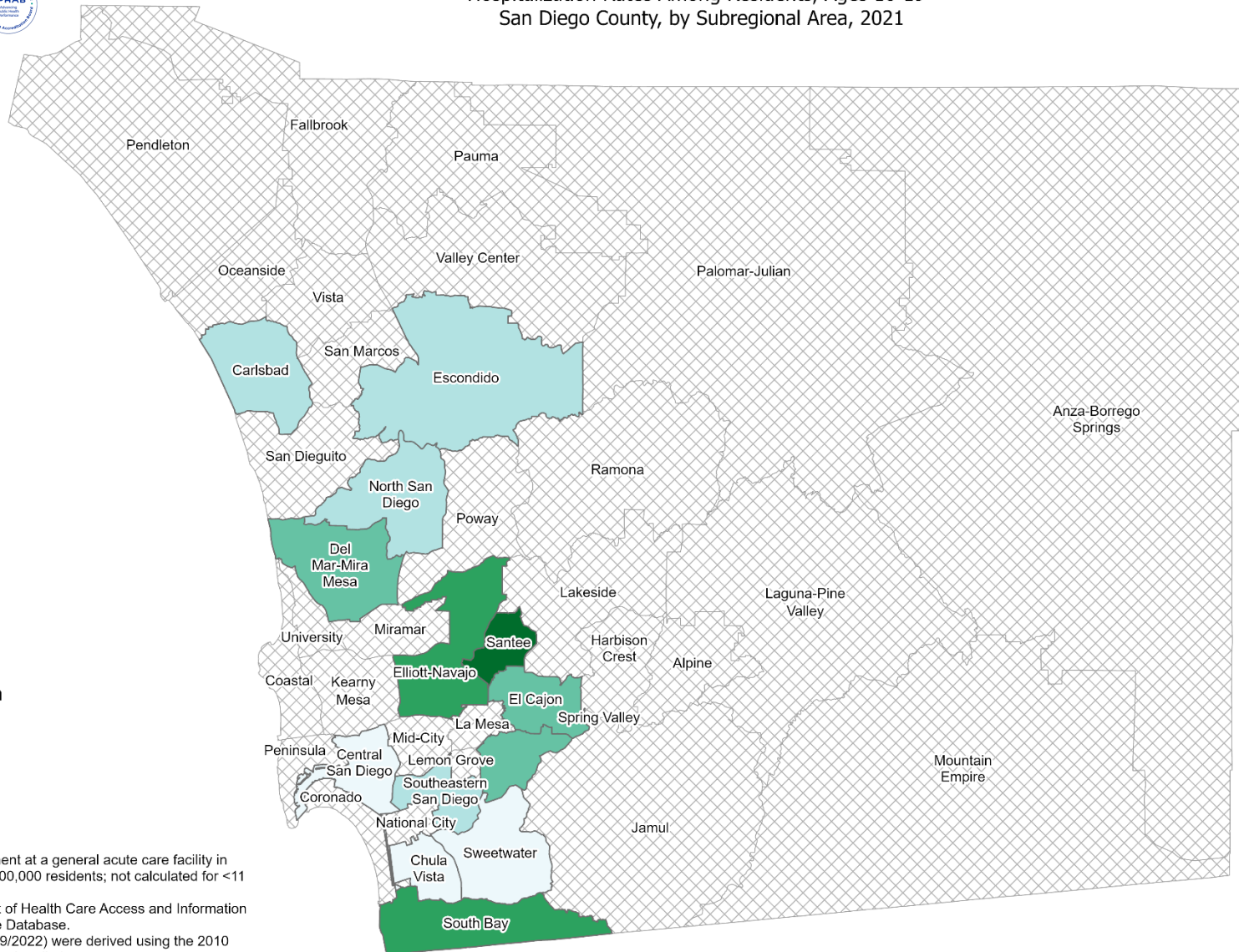


Hospitalization Rates Among Residents, Ages 10-19* San Diego County, by Subregional Area, 2021



Poisoning

- 46.5 - 68.8
- 68.9 - 91.2
- 91.3 - 113.5
- 113.6 - 135.9
- 136.0 - 158.3
- Data not shown



*Hospitalization refers to treatment at a general acute care facility in San Diego County. Rates per 100,000 residents; not calculated for <11 cases.
Sources: California Department of Health Care Access and Information (HCAI), 2021 Patient Discharge Database.
Population Estimates, 2021 (v09/2022) were derived using the 2010 Census and should be considered preliminary.

Maps & Analysis by County of San Diego, Health and Human Services Agency, Public Health Services, Community Health Statistics Unit.
Contact 619.692.6672. https://www.sandiegocounty.gov/hhsa/programs/phs/community_health_statistics/
August, 2023.
LiveWellSD.org.



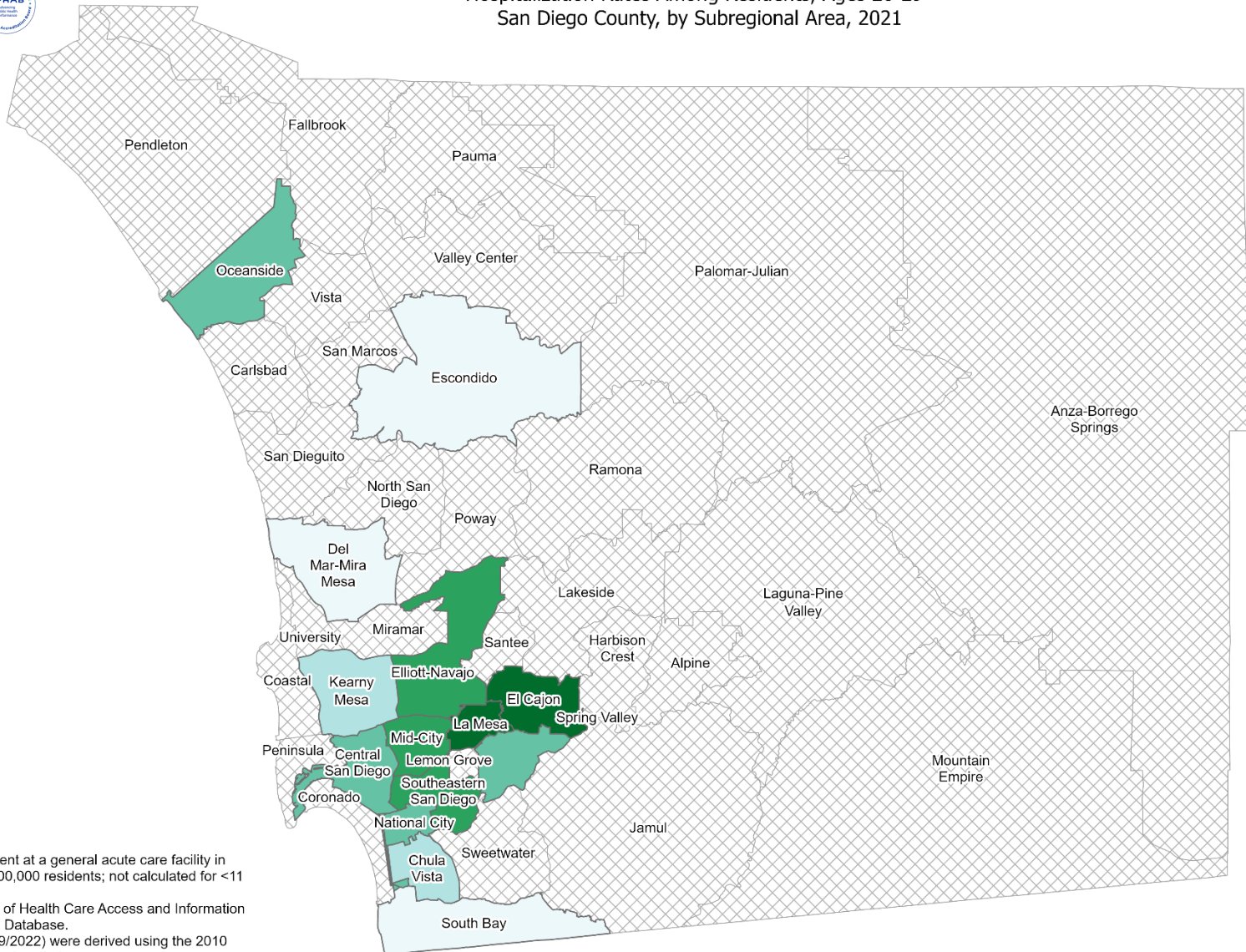


Hospitalization Rates Among Residents, Ages 20-29* San Diego County, by Subregional Area, 2021



Poisoning

- 50.8 - 73.2
- 73.3 - 95.5
- 95.6 - 117.9
- 118.0 - 140.2
- 140.3 - 162.6
- Data not shown



*Hospitalization refers to treatment at a general acute care facility in San Diego County. Rates per 100,000 residents; not calculated for <11 cases.
Sources: California Department of Health Care Access and Information (HCAI), 2021 Patient Discharge Database.
Population Estimates, 2021 (v09/2022) were derived using the 2010 Census and should be considered preliminary.

Maps & Analysis by County of San Diego, Health and Human Services Agency, Public Health Services, Community Health Statistics Unit.
Contact 619.692.6672. https://www.sandiegocounty.gov/hhsa/programs/phs/community_health_statistics/.
August, 2023.
LiveWellSD.org.

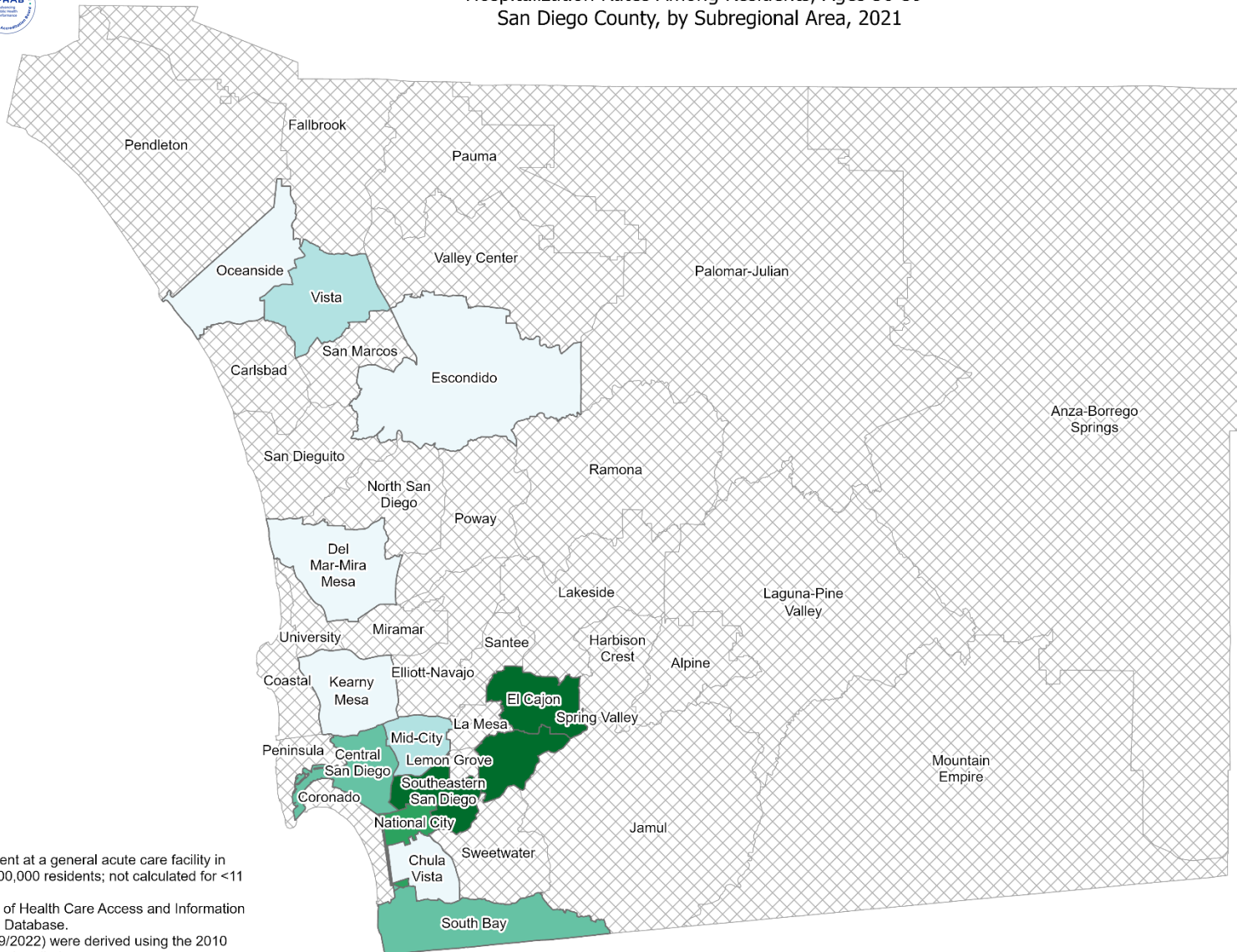
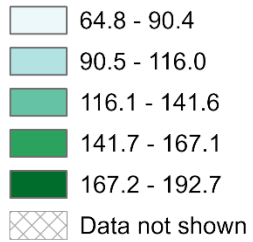




Hospitalization Rates Among Residents, Ages 30-39* San Diego County, by Subregional Area, 2021

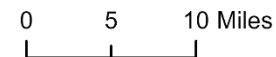


Poisoning



*Hospitalization refers to treatment at a general acute care facility in San Diego County. Rates per 100,000 residents; not calculated for <11 cases.
Sources: California Department of Health Care Access and Information (HCAI), 2021 Patient Discharge Database.
Population Estimates, 2021 (v09/2022) were derived using the 2010 Census and should be considered preliminary.

Maps & Analysis by County of San Diego, Health and Human Services Agency, Public Health Services, Community Health Statistics Unit.
Contact 619.692.6672. https://www.sandiegocounty.gov/hhsa/programs/phs/community_health_statistics/.
August, 2023.
LiveWellSD.org.

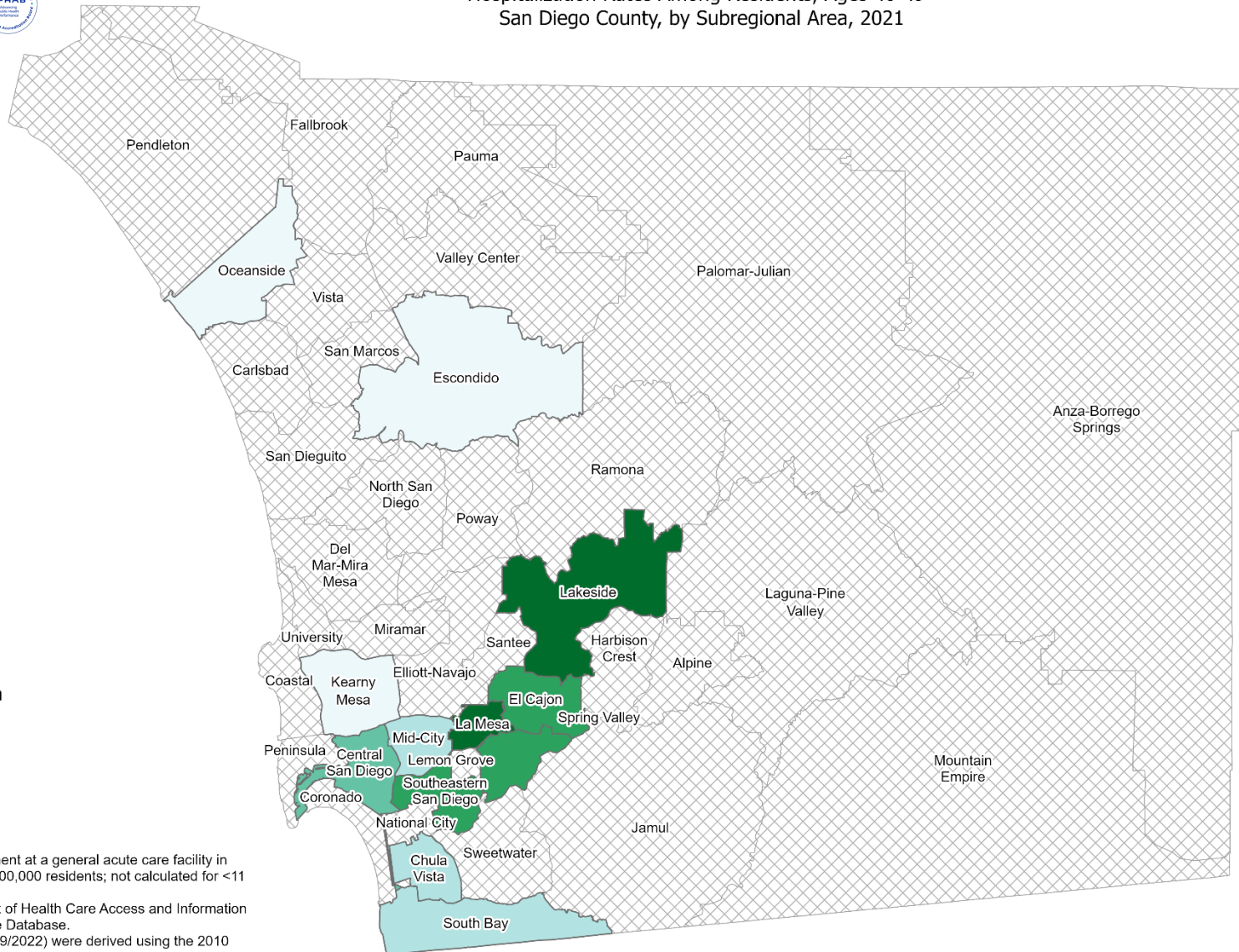
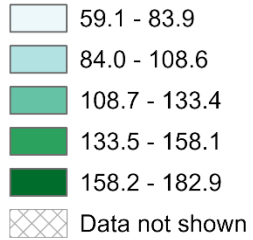




Hospitalization Rates Among Residents, Ages 40-49* San Diego County, by Subregional Area, 2021

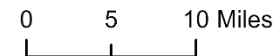


Poisoning



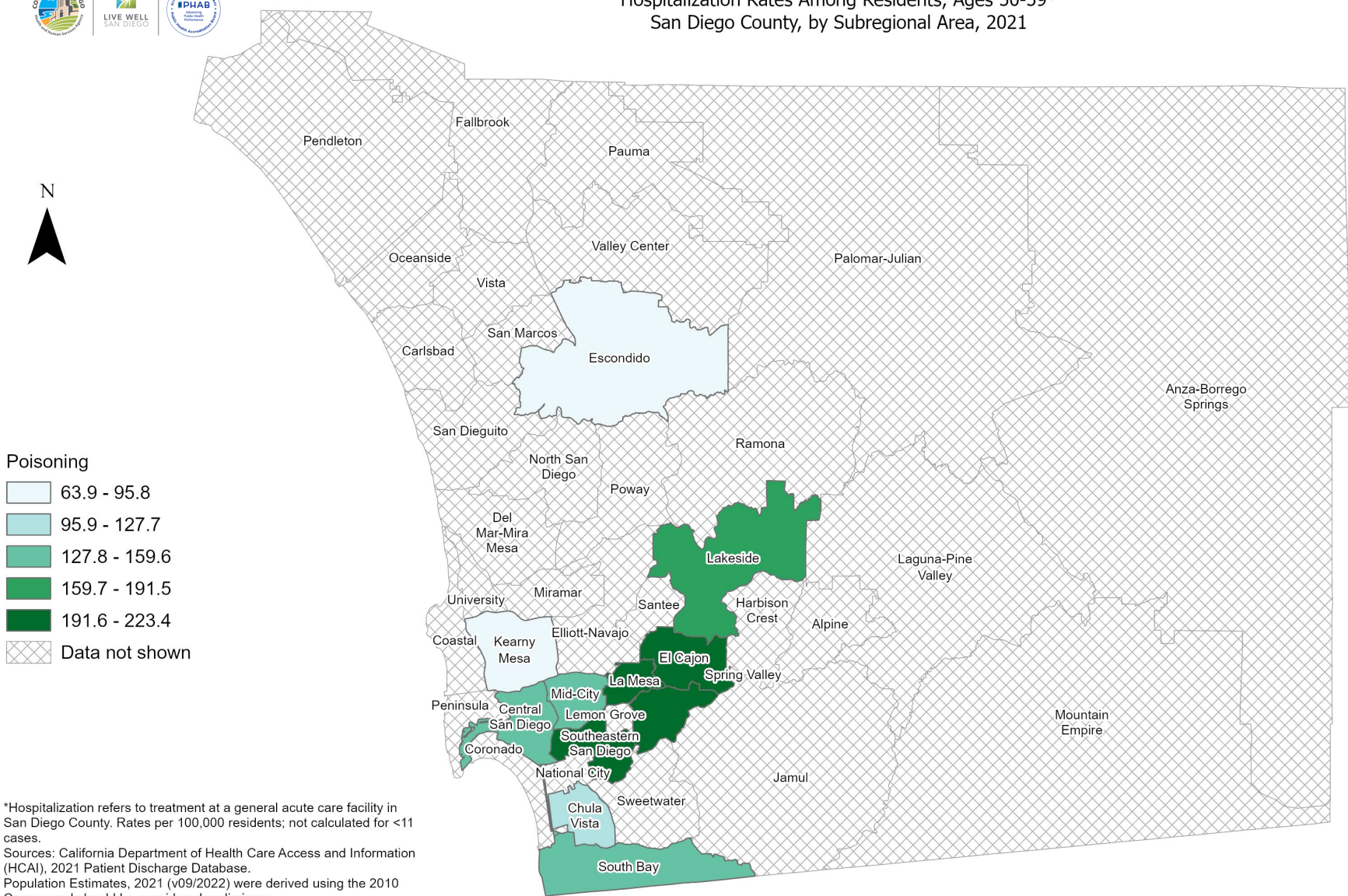
*Hospitalization refers to treatment at a general acute care facility in San Diego County. Rates per 100,000 residents; not calculated for <11 cases.
Sources: California Department of Health Care Access and Information (HCAI), 2021 Patient Discharge Database.
Population Estimates, 2021 (v09/2022) were derived using the 2010 Census and should be considered preliminary.

Maps & Analysis by County of San Diego, Health and Human Services Agency, Public Health Services, Community Health Statistics Unit.
Contact 619.692.6672. https://www.sandiegocounty.gov/hhsa/programs/phs/community_health_statistics/.
August, 2023.
LiveWellSD.org.



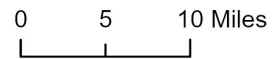


Hospitalization Rates Among Residents, Ages 50-59* San Diego County, by Subregional Area, 2021



*Hospitalization refers to treatment at a general acute care facility in San Diego County. Rates per 100,000 residents; not calculated for <11 cases.
Sources: California Department of Health Care Access and Information (HCAI), 2021 Patient Discharge Database, Population Estimates, 2021 (v09/2022) were derived using the 2010 Census and should be considered preliminary.

Maps & Analysis by County of San Diego, Health and Human Services Agency, Public Health Services, Community Health Statistics Unit. Contact 619.692.6672. https://www.sandiegocounty.gov/hhsa/programs/phs/community_health_statistics/, August, 2023. LiveWellSD.org.



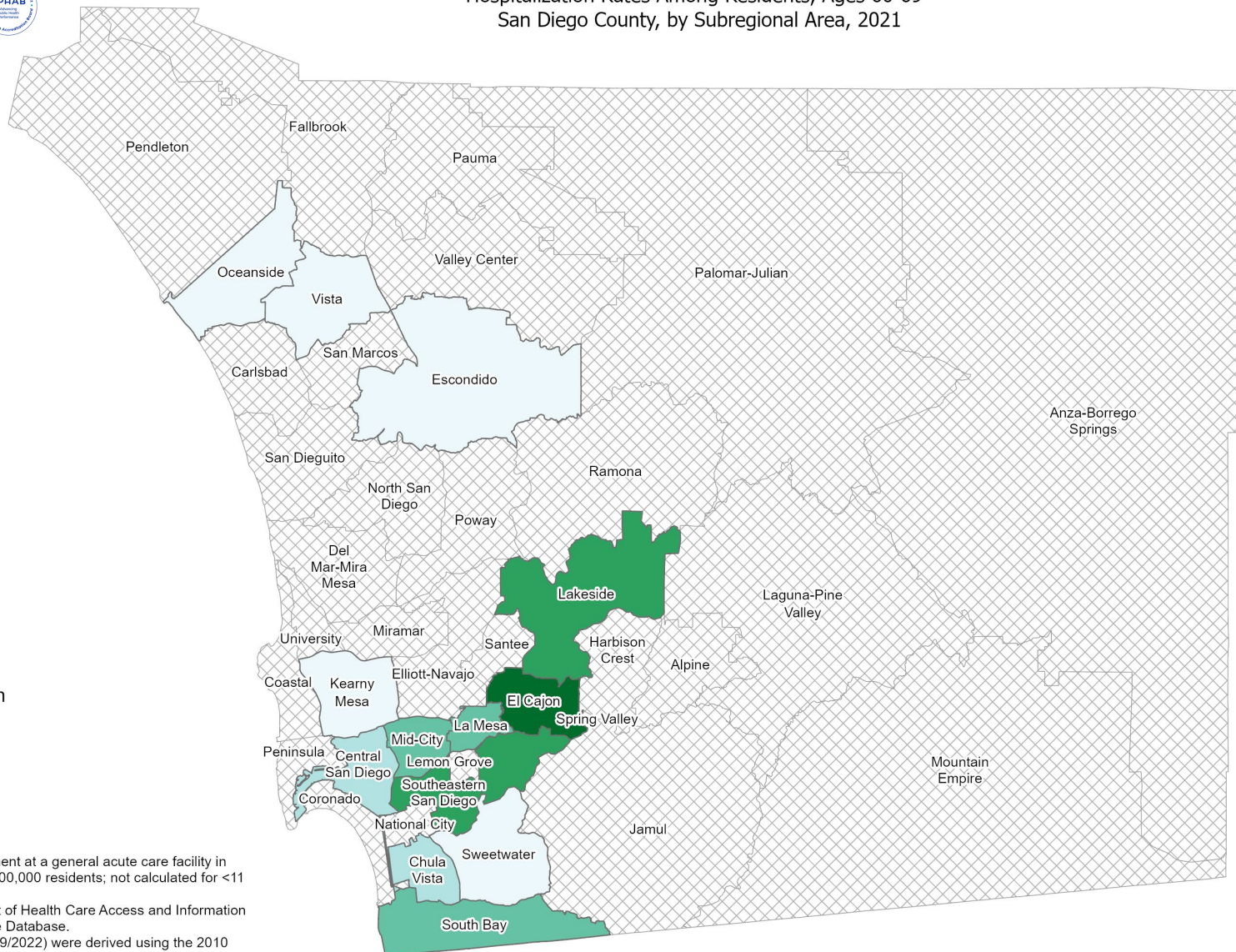


Hospitalization Rates Among Residents, Ages 60-69* San Diego County, by Subregional Area, 2021



Poisoning

- 94.4 - 129.8
- 129.9 - 165.3
- 165.4 - 200.7
- 200.8 - 236.1
- 236.2 - 271.6
- Data not shown



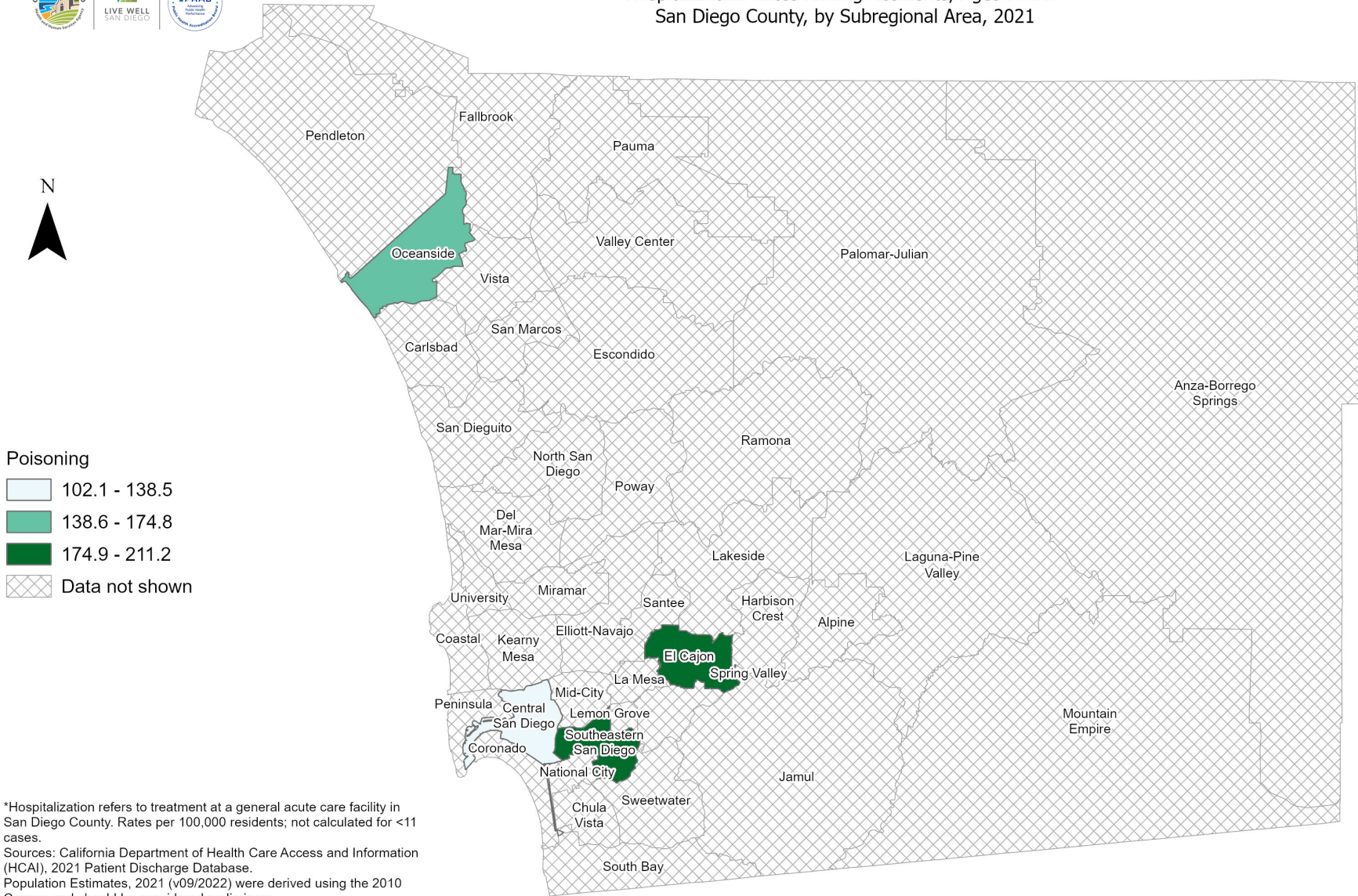
*Hospitalization refers to treatment at a general acute care facility in San Diego County. Rates per 100,000 residents; not calculated for <11 cases.
Sources: California Department of Health Care Access and Information (HCAI), 2021 Patient Discharge Database, Population Estimates, 2021 (v09/2022) were derived using the 2010 Census and should be considered preliminary.

Maps & Analysis by County of San Diego, Health and Human Services Agency, Public Health Services, Community Health Statistics Unit. Contact 619.692.6672. https://www.sandiegocounty.gov/hhsa/programs/phs/community_health_statistics/, August, 2023. LiveWellSD.org.



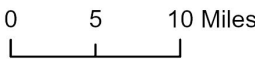


Hospitalization Rates Among Residents, Ages 70-79* San Diego County, by Subregional Area, 2021



*Hospitalization refers to treatment at a general acute care facility in San Diego County. Rates per 100,000 residents; not calculated for <11 cases.
Sources: California Department of Health Care Access and Information (HCAI), 2021 Patient Discharge Database, Population Estimates, 2021 (v09/2022) were derived using the 2010 Census and should be considered preliminary.

Maps & Analysis by County of San Diego, Health and Human Services Agency, Public Health Services, Community Health Statistics Unit. Contact 619.692.6672. https://www.sandiegocounty.gov/hhsa/programs/phs/community_health_statistics/. August, 2023. LiveWellSD.org.



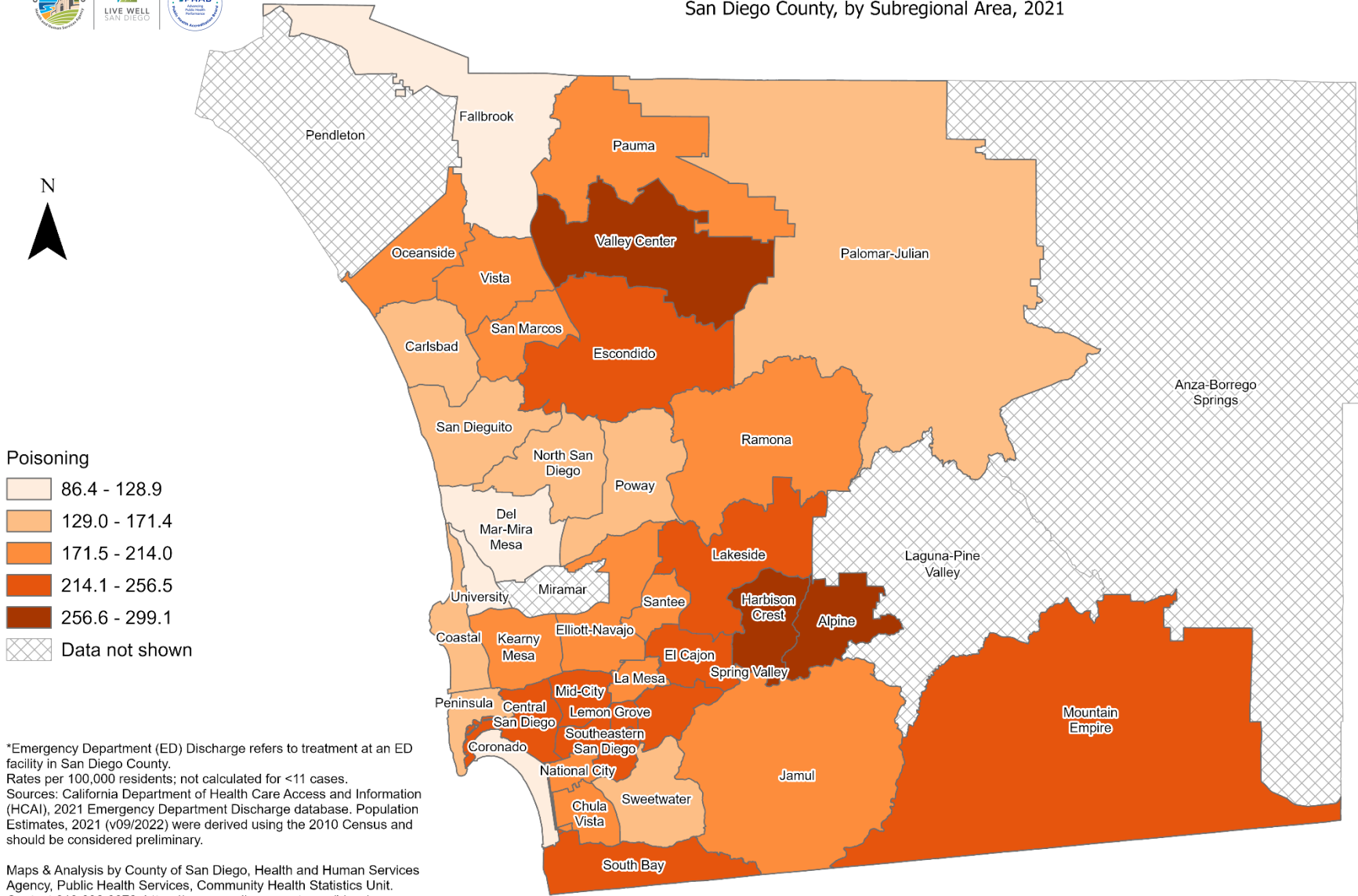
SECTION 3

Emergency Department (ED) Rates Among San Diego County Residents by Demographics, 2021:

- Total Rate
 - Race/Ethnicity
 - Asian/Pacific Islander (API)
 - Black
 - Hispanic
 - White
 - Age Group
 - 0-9 Years
 - 10-19 Years
 - 20-29 Years
 - 30-39 Years
 - 40-49 Years
 - 50-59 Years
 - 60-69 Years
 - 70-79 Years
 - 80+ Years



Total Emergency Department Discharge Rates* San Diego County, by Subregional Area, 2021

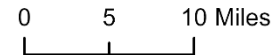


Poisoning

- 86.4 - 128.9
- 129.0 - 171.4
- 171.5 - 214.0
- 214.1 - 256.5
- 256.6 - 299.1
- Data not shown

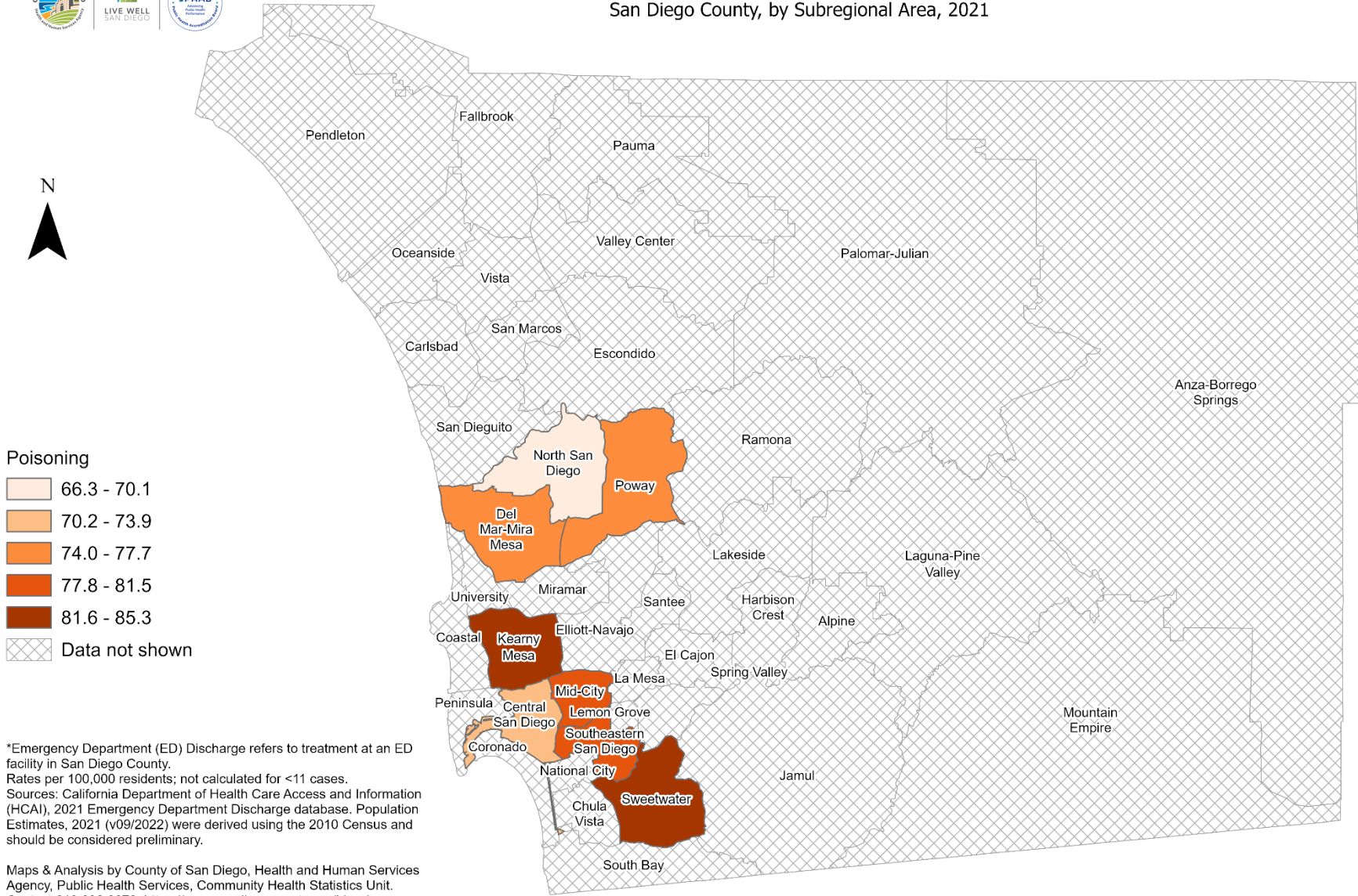
*Emergency Department (ED) Discharge refers to treatment at an ED facility in San Diego County. Rates per 100,000 residents; not calculated for <11 cases. Sources: California Department of Health Care Access and Information (HCAI), 2021 Emergency Department Discharge database. Population Estimates, 2021 (v09/2022) were derived using the 2010 Census and should be considered preliminary.

Maps & Analysis by County of San Diego, Health and Human Services Agency, Public Health Services, Community Health Statistics Unit. Contact 619.692.6672. https://www.sandiegocounty.gov/hhsa/programs/phs/community_health_statistics/. August, 2023. LiveWellSD.org.





Emergency Department Discharge Rates Among Asian/Pacific Islander Residents* San Diego County, by Subregional Area, 2021

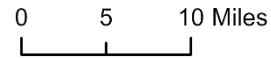


Poisoning

- 66.3 - 70.1
- 70.2 - 73.9
- 74.0 - 77.7
- 77.8 - 81.5
- 81.6 - 85.3
- Data not shown

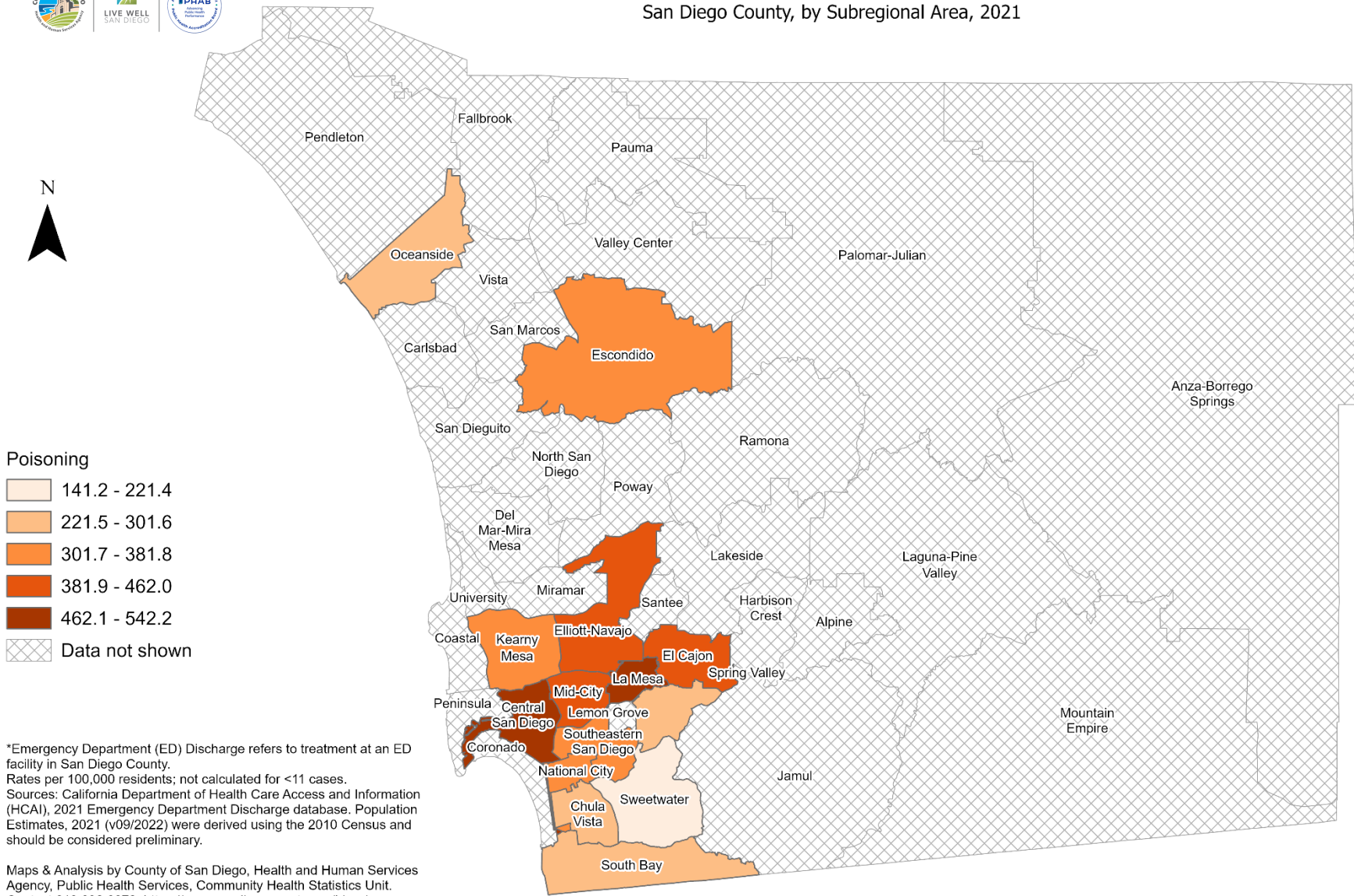
*Emergency Department (ED) Discharge refers to treatment at an ED facility in San Diego County.
Rates per 100,000 residents; not calculated for <11 cases.
Sources: California Department of Health Care Access and Information (HCAI), 2021 Emergency Department Discharge database. Population Estimates, 2021 (v09/2022) were derived using the 2010 Census and should be considered preliminary.

Maps & Analysis by County of San Diego, Health and Human Services Agency, Public Health Services, Community Health Statistics Unit.
Contact 619.692.6672. https://www.sandiegocounty.gov/hhsa/programs/phs/community_health_statistics/.
August, 2023.
LiveWellSD.org.





Emergency Department Discharge Rates Among Black Residents* San Diego County, by Subregional Area, 2021

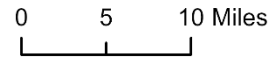


Poisoning

- 141.2 - 221.4
- 221.5 - 301.6
- 301.7 - 381.8
- 381.9 - 462.0
- 462.1 - 542.2
- Data not shown

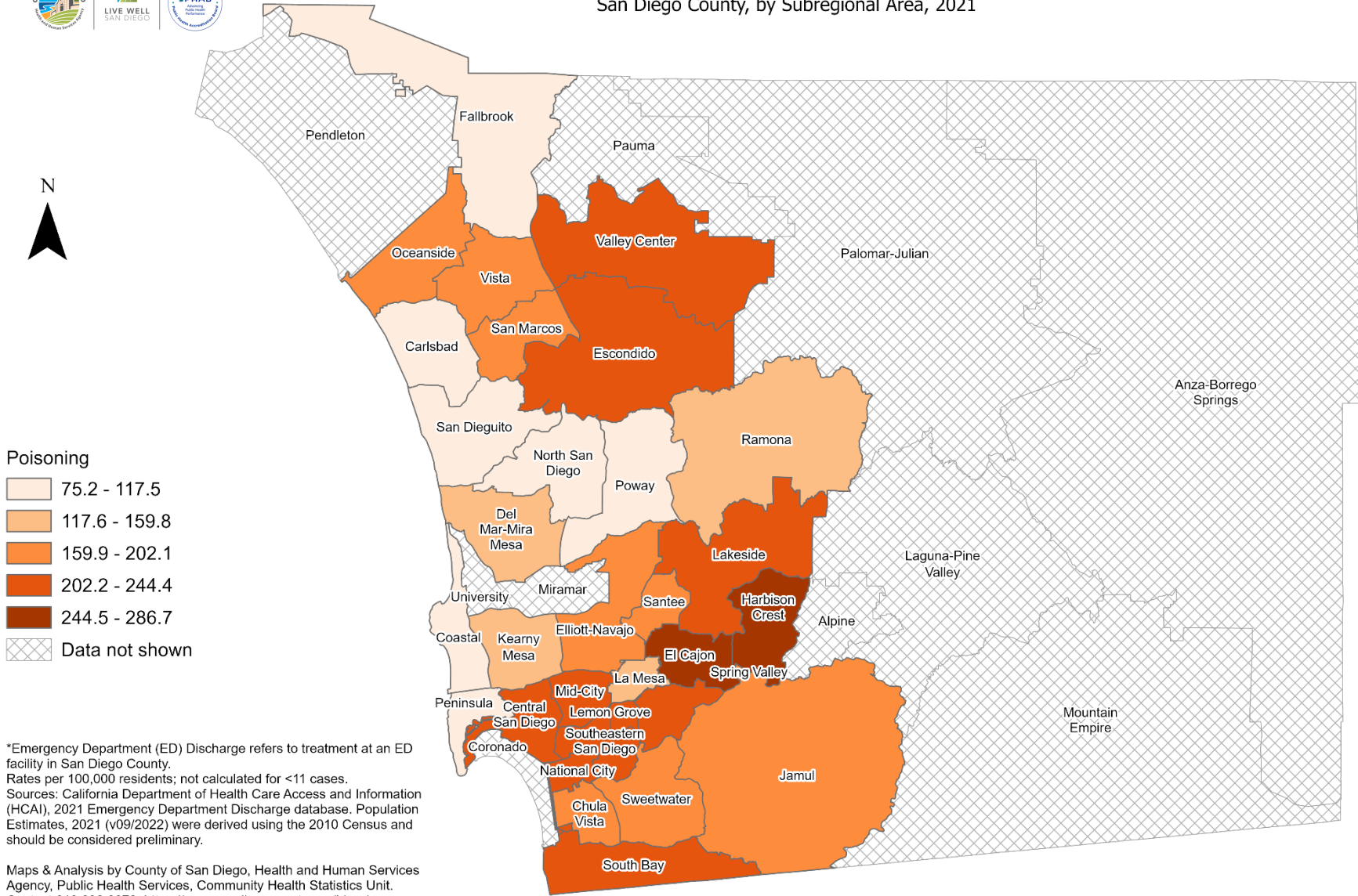
*Emergency Department (ED) Discharge refers to treatment at an ED facility in San Diego County.
 Rates per 100,000 residents; not calculated for <11 cases.
 Sources: California Department of Health Care Access and Information (HCAI), 2021 Emergency Department Discharge database. Population Estimates, 2021 (v09/2022) were derived using the 2010 Census and should be considered preliminary.

Maps & Analysis by County of San Diego, Health and Human Services Agency, Public Health Services, Community Health Statistics Unit.
 Contact 619.692.6672. https://www.sandiegocounty.gov/hhsa/programs/phs/community_health_statistics/.
 August, 2023.
 LiveWellSD.org.



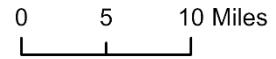


Emergency Department Discharge Rates Among Hispanic Residents* San Diego County, by Subregional Area, 2021



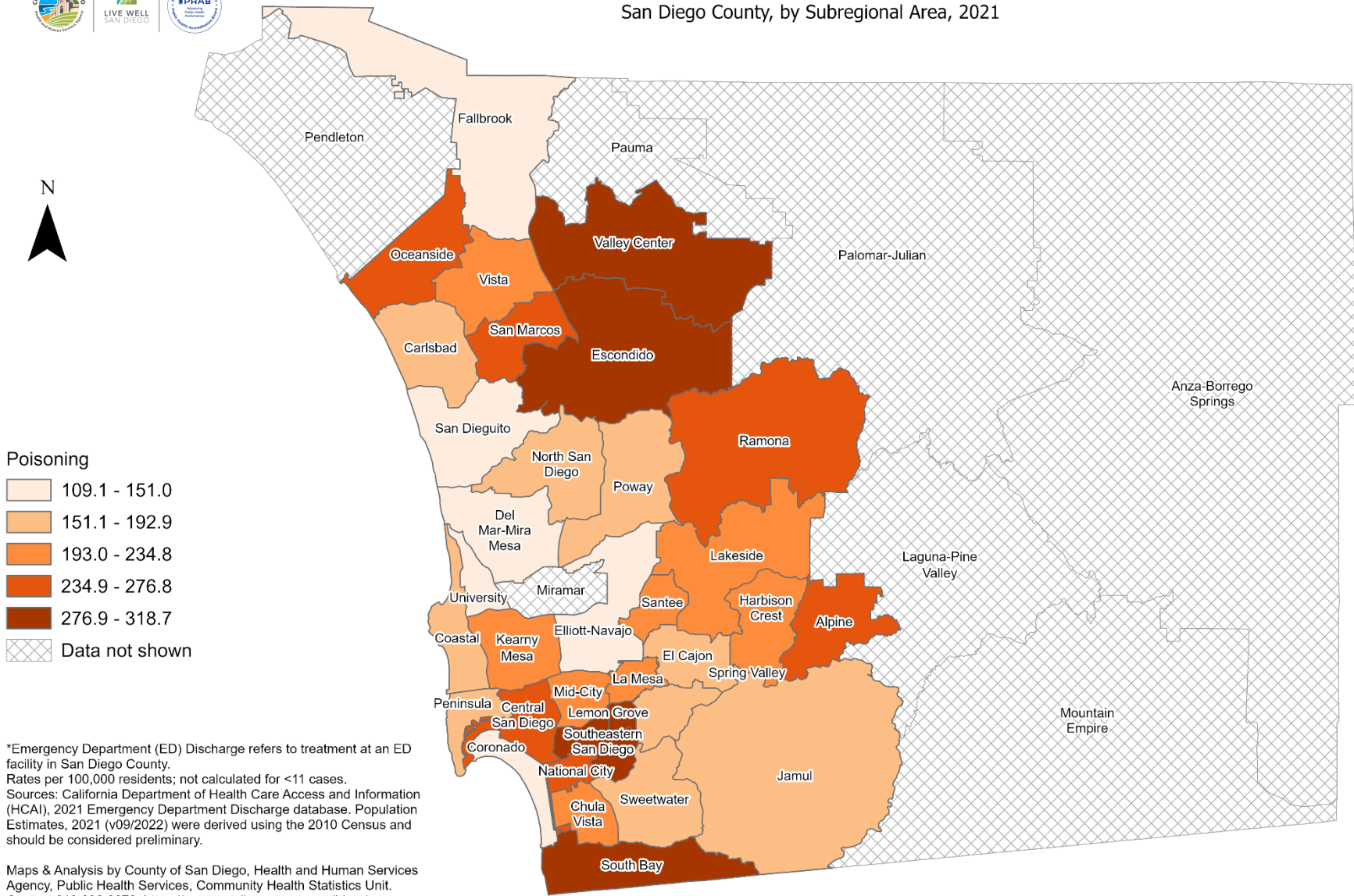
*Emergency Department (ED) Discharge refers to treatment at an ED facility in San Diego County.
 Rates per 100,000 residents; not calculated for <11 cases.
 Sources: California Department of Health Care Access and Information (HCAI), 2021 Emergency Department Discharge database. Population Estimates, 2021 (v09/2022) were derived using the 2010 Census and should be considered preliminary.

Maps & Analysis by County of San Diego, Health and Human Services Agency, Public Health Services, Community Health Statistics Unit.
 Contact 619.692.6672. https://www.sandiegocounty.gov/hhsa/programs/phs/community_health_statistics/.
 August, 2023.
 LiveWellSD.org.





Emergency Department Discharge Rates Among White Residents* San Diego County, by Subregional Area, 2021

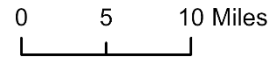


Poisoning

- 109.1 - 151.0
- 151.1 - 192.9
- 193.0 - 234.8
- 234.9 - 276.8
- 276.9 - 318.7
- Data not shown

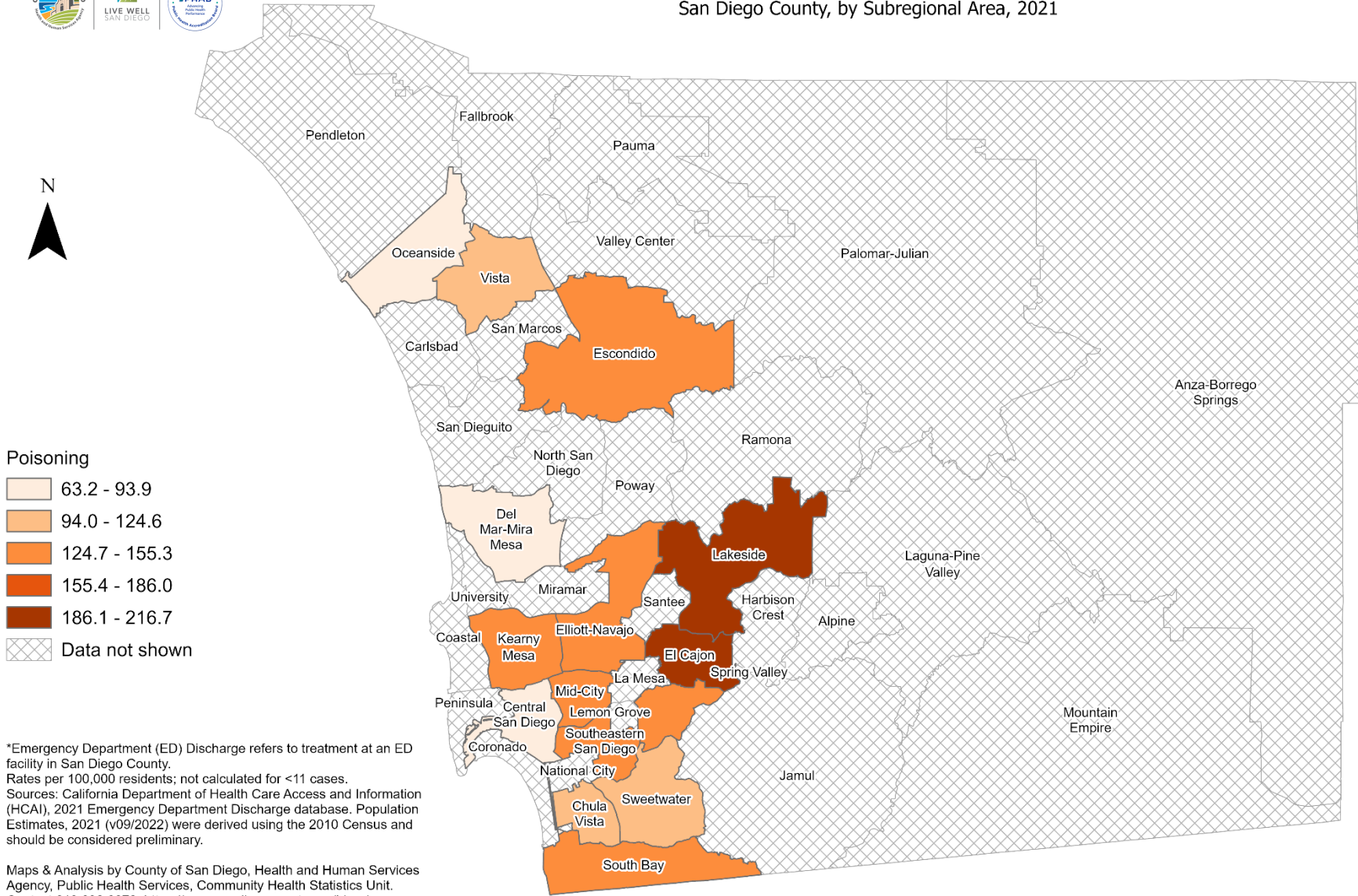
*Emergency Department (ED) Discharge refers to treatment at an ED facility in San Diego County.
Rates per 100,000 residents; not calculated for <11 cases.
Sources: California Department of Health Care Access and Information (HCAI), 2021 Emergency Department Discharge database. Population Estimates, 2021 (v09/2022) were derived using the 2010 Census and should be considered preliminary.

Maps & Analysis by County of San Diego, Health and Human Services Agency, Public Health Services, Community Health Statistics Unit.
Contact 619.692.6672. https://www.sandiegocounty.gov/hhsa/programs/phs/community_health_statistics/.
August, 2023.
LiveWellSD.org.





Emergency Department Discharge Rates Among Residents, Ages 0-9* San Diego County, by Subregional Area, 2021

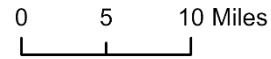


Poisoning

- 63.2 - 93.9
- 94.0 - 124.6
- 124.7 - 155.3
- 155.4 - 186.0
- 186.1 - 216.7
- Data not shown

*Emergency Department (ED) Discharge refers to treatment at an ED facility in San Diego County. Rates per 100,000 residents; not calculated for <11 cases. Sources: California Department of Health Care Access and Information (HCAI), 2021 Emergency Department Discharge database. Population Estimates, 2021 (v09/2022) were derived using the 2010 Census and should be considered preliminary.

Maps & Analysis by County of San Diego, Health and Human Services Agency, Public Health Services, Community Health Statistics Unit. Contact 619.692.6672. https://www.sandiegocounty.gov/hhsa/programs/phs/community_health_statistics/. August, 2023. LiveWellSD.org.



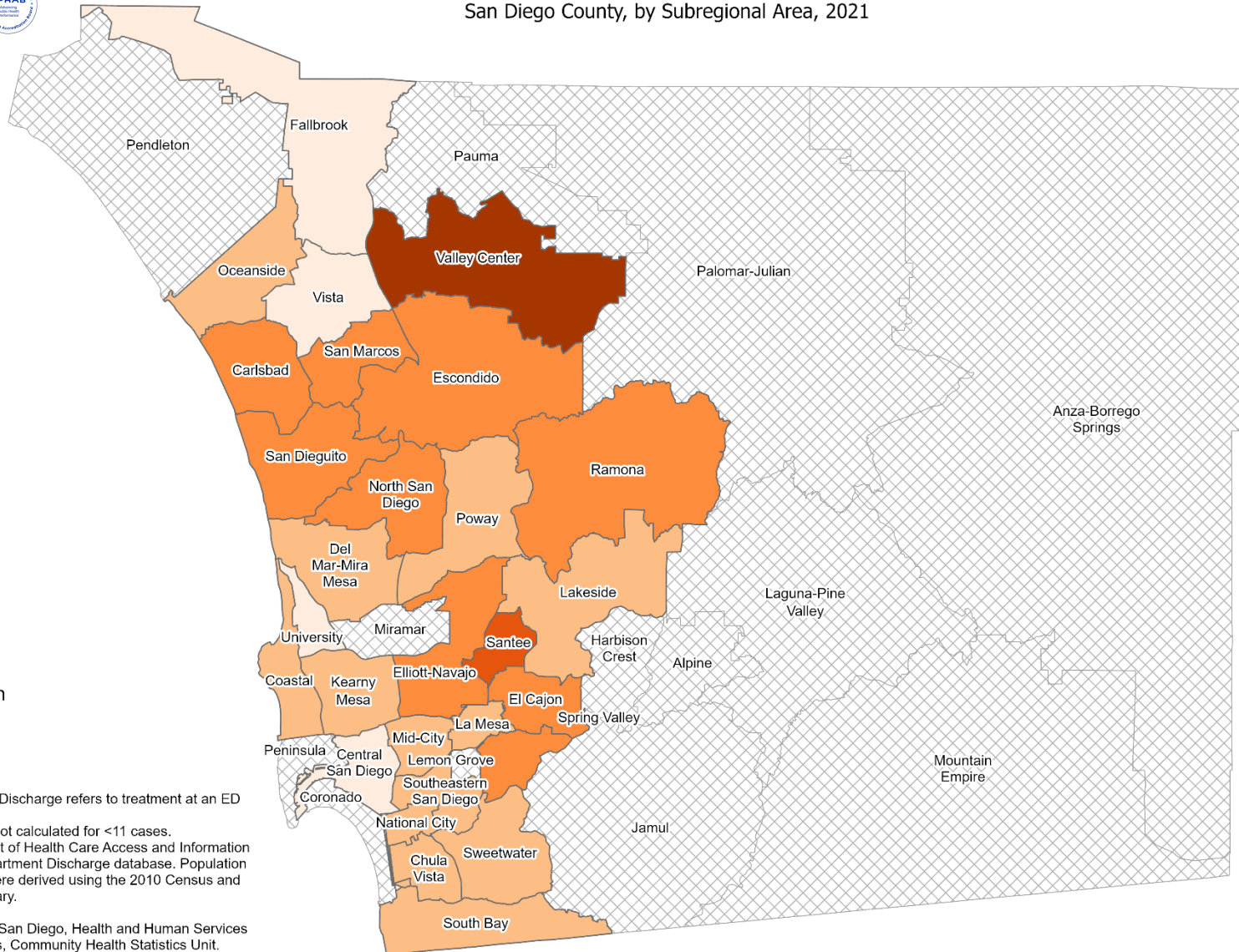


Emergency Department Discharge Rates Among Residents, Ages 10-19* San Diego County, by Subregional Area, 2021



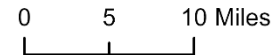
Poisoning

- 114.3 - 203.8
- 203.9 - 293.4
- 293.5 - 383.0
- 383.1 - 472.5
- 472.6 - 562.1
- Data not shown



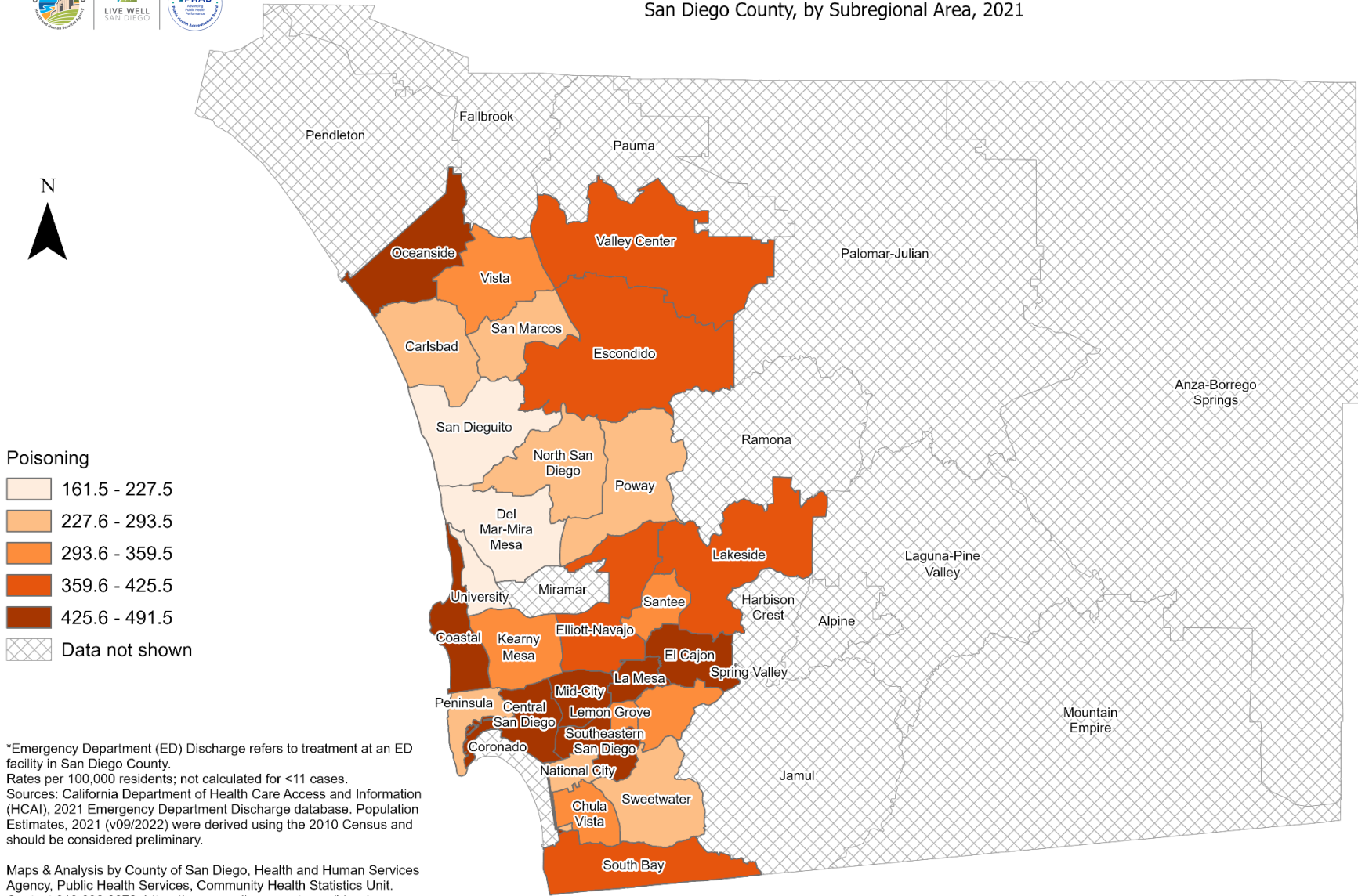
*Emergency Department (ED) Discharge refers to treatment at an ED facility in San Diego County.
Rates per 100,000 residents; not calculated for <11 cases.
Sources: California Department of Health Care Access and Information (HCAI), 2021 Emergency Department Discharge database. Population Estimates, 2021 (v09/2022) were derived using the 2010 Census and should be considered preliminary.

Maps & Analysis by County of San Diego, Health and Human Services Agency, Public Health Services, Community Health Statistics Unit.
Contact 619.692.6672. https://www.sandiegocounty.gov/hhsa/programs/phs/community_health_statistics/.
August, 2023.
LiveWellSD.org.





Emergency Department Discharge Rates Among Residents, Ages 20-29* San Diego County, by Subregional Area, 2021



Poisoning

- 161.5 - 227.5
- 227.6 - 293.5
- 293.6 - 359.5
- 359.6 - 425.5
- 425.6 - 491.5
- Data not shown

*Emergency Department (ED) Discharge refers to treatment at an ED facility in San Diego County. Rates per 100,000 residents; not calculated for <11 cases. Sources: California Department of Health Care Access and Information (HCAI), 2021 Emergency Department Discharge database. Population Estimates, 2021 (v09/2022) were derived using the 2010 Census and should be considered preliminary.

Maps & Analysis by County of San Diego, Health and Human Services Agency, Public Health Services, Community Health Statistics Unit. Contact 619.692.6672. https://www.sandiegocounty.gov/hhsa/programs/phs/community_health_statistics/. August, 2023. LiveWellSD.org.



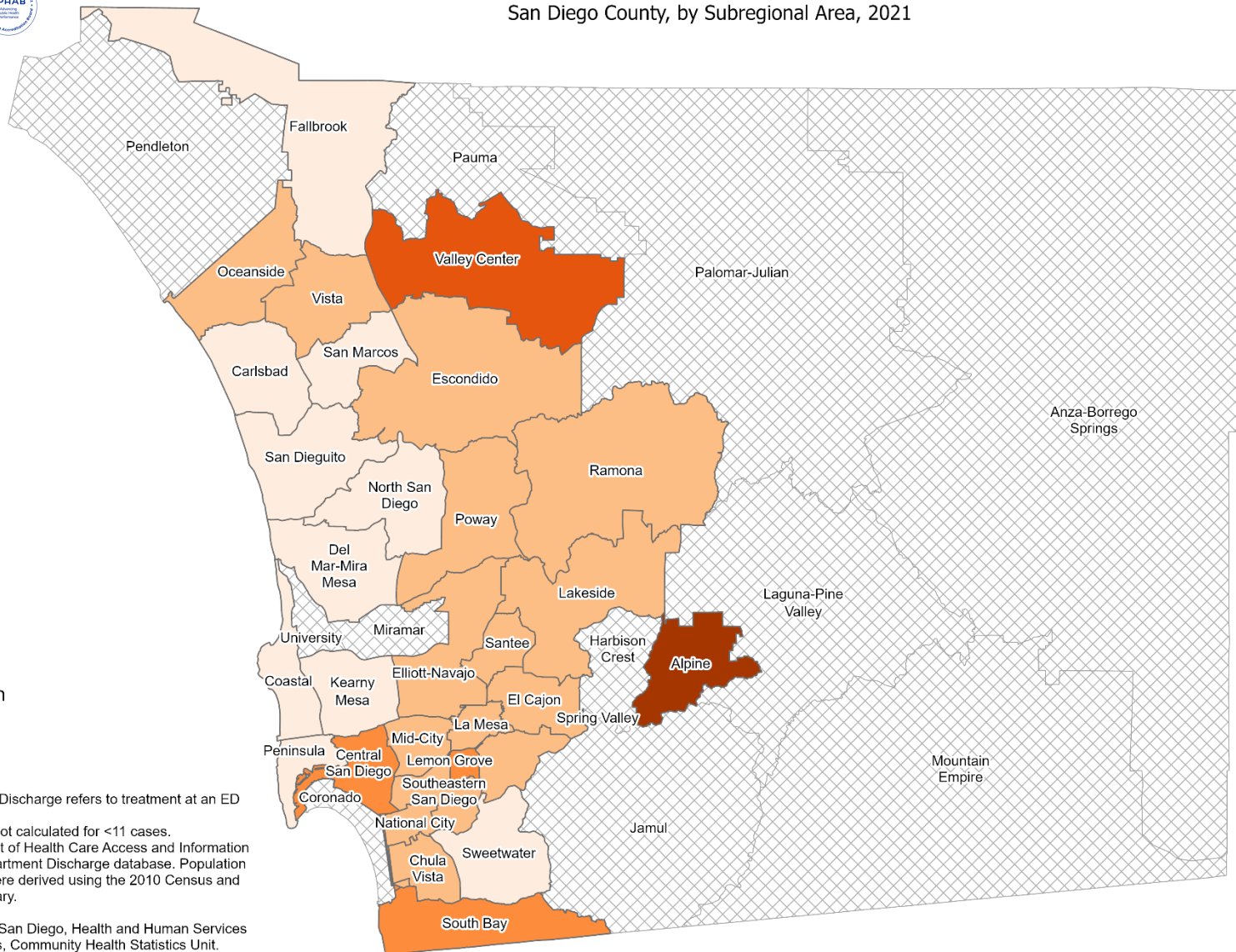


Emergency Department Discharge Rates Among Residents, Ages 30-39* San Diego County, by Subregional Area, 2021



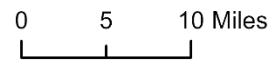
Poisoning

- 104.9 - 242.4
- 242.5 - 379.9
- 380.0 - 517.4
- 517.5 - 655.0
- 655.1 - 792.5
- Data not shown



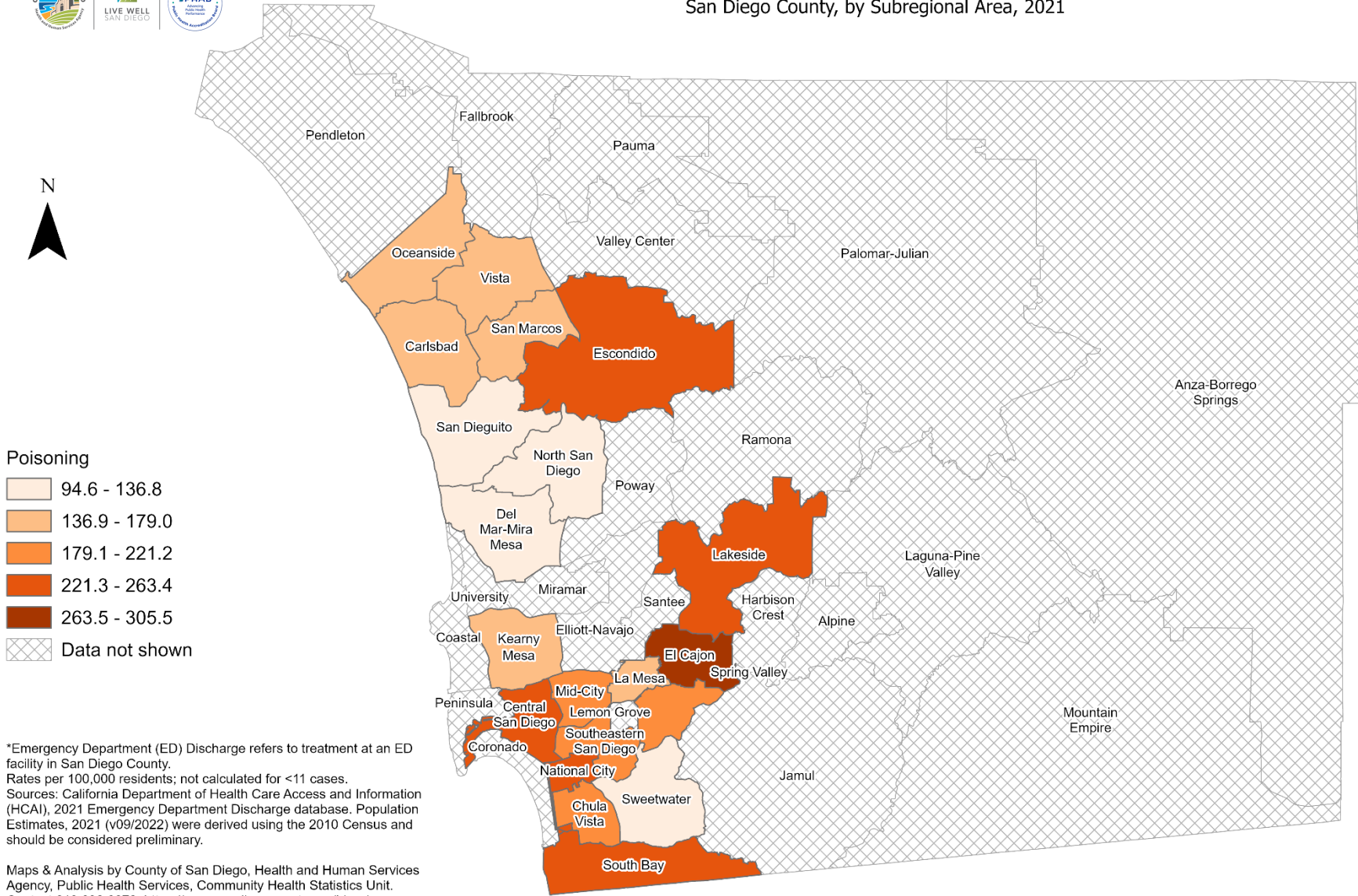
*Emergency Department (ED) Discharge refers to treatment at an ED facility in San Diego County.
Rates per 100,000 residents; not calculated for <11 cases.
Sources: California Department of Health Care Access and Information (HCAI), 2021 Emergency Department Discharge database. Population Estimates, 2021 (v09/2022) were derived using the 2010 Census and should be considered preliminary.

Maps & Analysis by County of San Diego, Health and Human Services Agency, Public Health Services, Community Health Statistics Unit.
Contact 619.692.6672. https://www.sandiegocounty.gov/hhsa/programs/phs/community_health_statistics/.
August, 2023.
LiveWellSD.org.



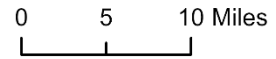


Emergency Department Discharge Rates Among Residents, Ages 40-49* San Diego County, by Subregional Area, 2021



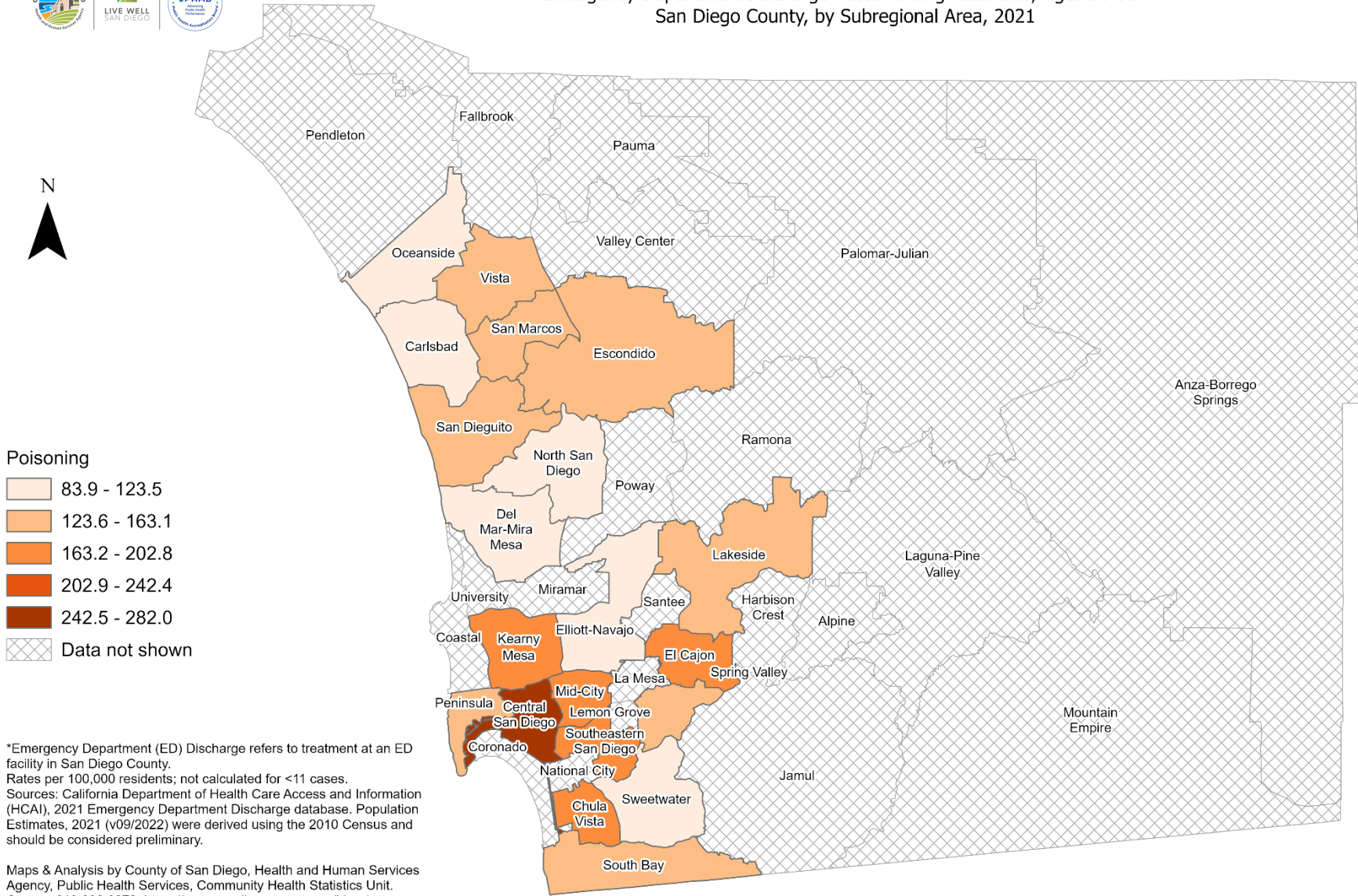
*Emergency Department (ED) Discharge refers to treatment at an ED facility in San Diego County.
 Rates per 100,000 residents; not calculated for <11 cases.
 Sources: California Department of Health Care Access and Information (HCAI), 2021 Emergency Department Discharge database. Population Estimates, 2021 (v09/2022) were derived using the 2010 Census and should be considered preliminary.

Maps & Analysis by County of San Diego, Health and Human Services Agency, Public Health Services, Community Health Statistics Unit.
 Contact 619.692.6672. https://www.sandiegocounty.gov/hhsa/programs/phs/community_health_statistics/.
 August, 2023.
 LiveWellSD.org.





Emergency Department Discharge Rates Among Residents, Ages 50-59* San Diego County, by Subregional Area, 2021

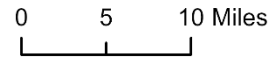


Poisoning

- 83.9 - 123.5
- 123.6 - 163.1
- 163.2 - 202.8
- 202.9 - 242.4
- 242.5 - 282.0
- Data not shown

*Emergency Department (ED) Discharge refers to treatment at an ED facility in San Diego County.
Rates per 100,000 residents; not calculated for <11 cases.
Sources: California Department of Health Care Access and Information (HCAI), 2021 Emergency Department Discharge database. Population Estimates, 2021 (v09/2022) were derived using the 2010 Census and should be considered preliminary.

Maps & Analysis by County of San Diego, Health and Human Services Agency, Public Health Services, Community Health Statistics Unit.
Contact 619.692.6672. https://www.sandiegocounty.gov/hhsa/programs/phs/community_health_statistics/.
August, 2023.
LiveWellSD.org.

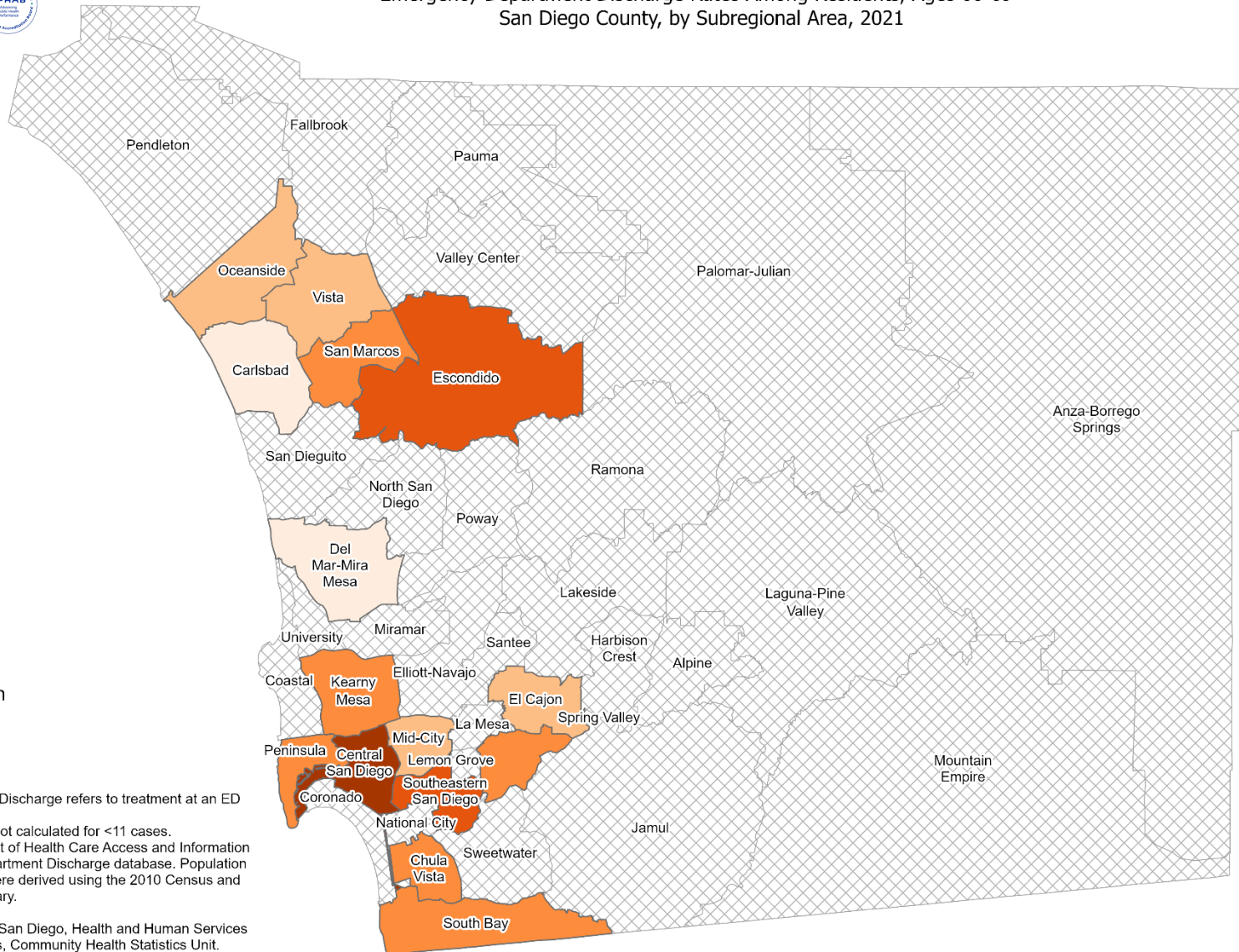
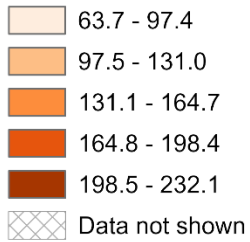




Emergency Department Discharge Rates Among Residents, Ages 60-69* San Diego County, by Subregional Area, 2021

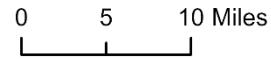


Poisoning



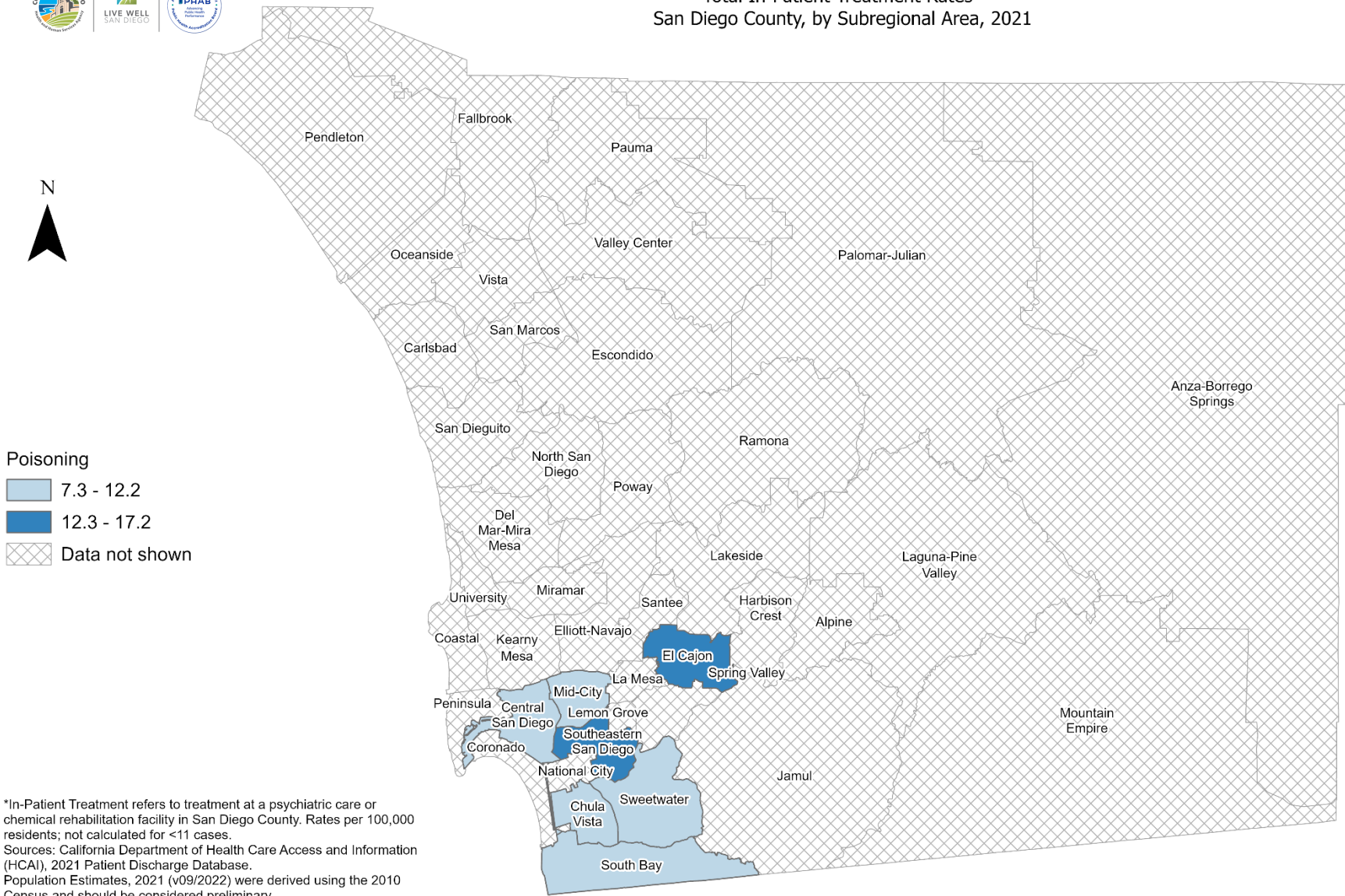
*Emergency Department (ED) Discharge refers to treatment at an ED facility in San Diego County.
Rates per 100,000 residents; not calculated for <11 cases.
Sources: California Department of Health Care Access and Information (HCAI), 2021 Emergency Department Discharge database. Population Estimates, 2021 (v09/2022) were derived using the 2010 Census and should be considered preliminary.

Maps & Analysis by County of San Diego, Health and Human Services Agency, Public Health Services, Community Health Statistics Unit.
Contact 619.692.6672. https://www.sandiegocounty.gov/hhsa/programs/phs/community_health_statistics/.
August, 2023.
LiveWellSD.org.





Total In-Patient Treatment Rates* San Diego County, by Subregional Area, 2021



*In-Patient Treatment refers to treatment at a psychiatric care or chemical rehabilitation facility in San Diego County. Rates per 100,000 residents; not calculated for <11 cases.
Sources: California Department of Health Care Access and Information (HCAI), 2021 Patient Discharge Database.
Population Estimates, 2021 (v09/2022) were derived using the 2010 Census and should be considered preliminary.

Maps & Analysis by County of San Diego, Health and Human Services Agency, Public Health Services, Community Health Statistics Unit.
Contact 619.692.6672. https://www.sandiegocounty.gov/hhsa/programs/phs/community_health_statistics/.
August, 2023.
LiveWellSD.org.

