



2021 MAP ATLAS

Stimulant Overdoses

AUGUST 2023



County of San Diego | Health and Human Services Agency | Public Health Services | Community Health Statistics Unit



Data Sources

Death* is based on underlying cause of death among San Diego County residents. Rates calculated per 100,000 residents. Rates not calculated for < 11 cases. Maps not produced for conditions/outcomes with no SRA-level rates. Some sections may have no maps.

Sources: California Department of Public Health, Center for Health Statistics, Office of Health Information and Research, Vital Records Business Intelligence System (VRBIS), 2021. ***The COVID-19 pandemic was associated with increases in all-cause mortality. COVID-19 deaths have affected the patterns of mortality.*** SANDAG: San Diego Association of Governments (SANDAG) Population Estimates, 2021 (v09/2022). ***Population estimates for 2021 were derived using the 2010 Census and data should be considered preliminary.***

*For substance/drug overdoses, death rate is based on the multiple/contributing cause of death among San Diego County residents.

Hospitalization refers to treatment at a general acute care facility in San Diego County. Rates calculated per 100,000 residents. Rates not calculated for < 11 cases. Maps not produced for conditions/outcomes with no SRA-level rates. Some sections may have no maps.

Sources: California Department of Health Care Access and Information (HCAI), Patient Discharge Database, 2021. San Diego Association of Governments (SANDAG) Population Estimates, 2021 (v09/2022). ***Population estimates for 2021 were derived using the 2010 Census and data should be considered preliminary.***

Emergency Department (ED) Discharge refers to treatment at an ED facility in San Diego County.

Rates calculated per 100,000 residents. Rates not calculated for < 11 cases. Maps not produced for conditions/outcomes with no SRA-level rates. Some sections may have no maps.

Sources: California Department of Health Care Access and Information (HCAI), Emergency Department Discharge Database, 2021. San Diego Association of Governments (SANDAG) Population Estimates, 2021 (v09/2022). ***Population estimates for 2021 were derived using the 2010 Census and data should be considered preliminary.***

In-Patient Treatment (IPT) refers to treatment at a psychiatric care or chemical rehabilitation facility in San Diego County. Rates calculated per 100,000 residents. Rates not calculated for < 11 cases. Maps not produced for conditions/outcomes with no SRA-level rates. Some sections may have no maps.

Sources: California Department of Health Care Access and Information (HCAI), Patient Discharge Database, 2021. San Diego Association of Governments (SANDAG) Population Estimates, 2021 (v09/2022). ***Population estimates for 2021 were derived using the 2010 Census and data should be considered preliminary.***

Maps & Analysis by County of San Diego, Health and Human Services Agency, Public Health Services, Community Health Statistics Unit. Contact 619.692.6672. August 2023.

https://www.sandiegocounty.gov/hhsa/programs/phs/community_health_statistics/LiveWellSD.org.

For more detailed explanation of geography, methods, and sources, please refer to CHSU's [2020 Community Profiles Data Guide and Data Dictionary Dashboards](#).

Table of Contents

Section 1: Deaths	1
Section 2: Hospitalizations	8
Section 3: Emergency Department (ED) Discharges	11
Section 4: In-Patient Treatments (IPT).....	13

SECTION 1



Death Rates Among San Diego County Residents by Demographics, 2021:

- Total Rate
 - Race/Ethnicity
 - Asian/Pacific Islander (API)
 - Black
 - Hispanic
 - White
 - Age Group
 - 0-9 Years
 - 10-19 Years
 - 20-29 Years
 - 30-39 Years
 - 40-49 Years
 - 50-59 Years
 - 60-69 Years
 - 70-79 Years
 - 80+ Years

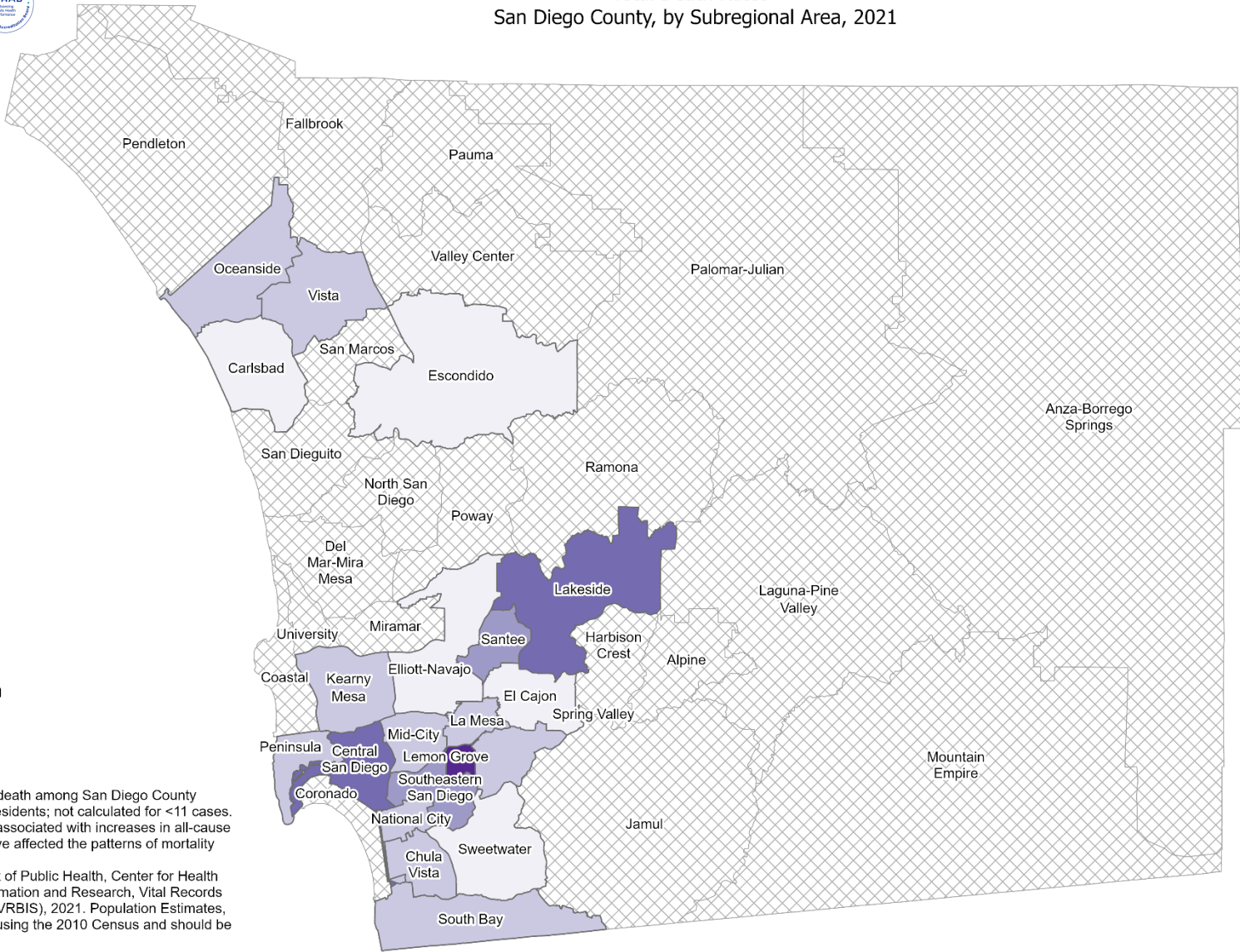
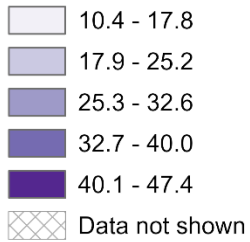
-
-
-
-
-



Total Death Rates* San Diego County, by Subregional Area, 2021

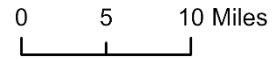


Stimulant Overdoses



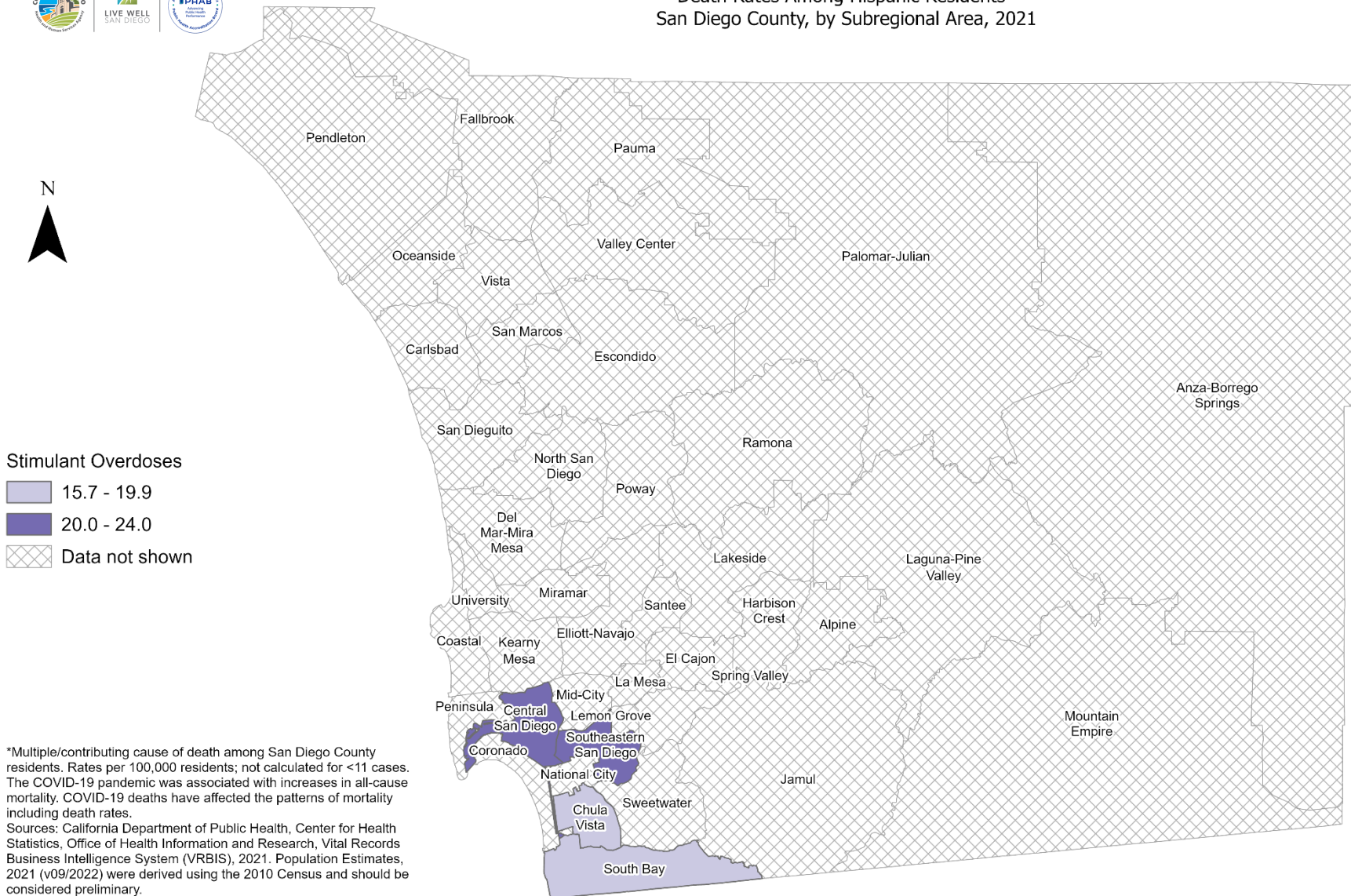
*Multiple/contributing cause of death among San Diego County residents. Rates per 100,000 residents; not calculated for <11 cases. The COVID-19 pandemic was associated with increases in all-cause mortality. COVID-19 deaths have affected the patterns of mortality including death rates.
 Sources: California Department of Public Health, Center for Health Statistics, Office of Health Information and Research, Vital Records Business Intelligence System (VRBIS), 2021. Population Estimates, 2021 (v09/2022) were derived using the 2010 Census and should be considered preliminary.

Maps & Analysis by County of San Diego, Health and Human Services Agency, Public Health Services, Community Health Statistics Unit.
 Contact 619.692.6672.
https://www.sandiegocounty.gov/hhsa/programs/phs/community_health_statistics/
 August, 2023.
 LiveWellSD.org.



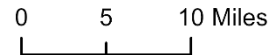


Death Rates Among Hispanic Residents* San Diego County, by Subregional Area, 2021



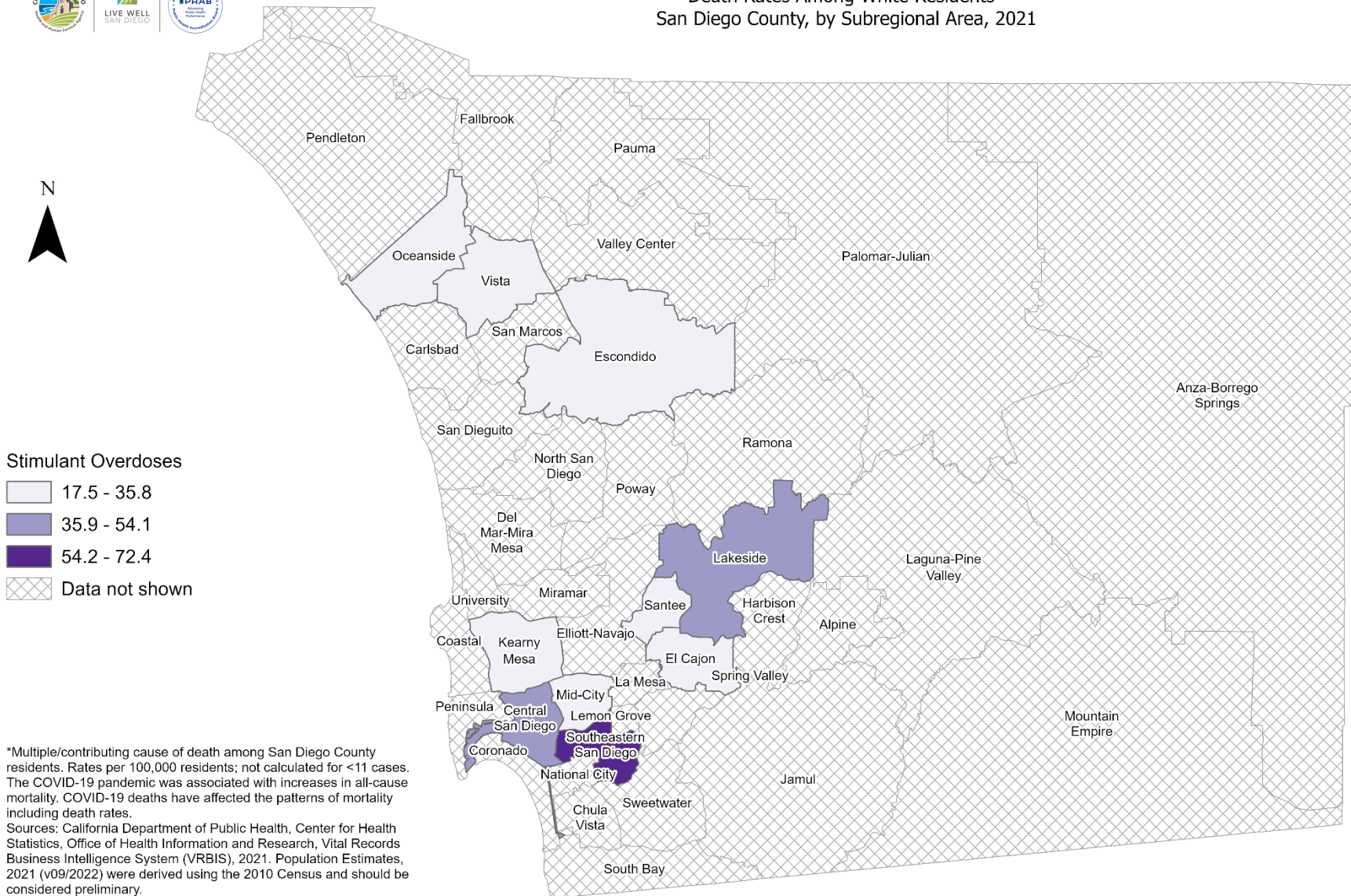
*Multiple/contributing cause of death among San Diego County residents. Rates per 100,000 residents; not calculated for <11 cases. The COVID-19 pandemic was associated with increases in all-cause mortality. COVID-19 deaths have affected the patterns of mortality including death rates.
Sources: California Department of Public Health, Center for Health Statistics, Office of Health Information and Research, Vital Records Business Intelligence System (VRBIS), 2021. Population Estimates, 2021 (v09/2022) were derived using the 2010 Census and should be considered preliminary.

Maps & Analysis by County of San Diego, Health and Human Services Agency, Public Health Services, Community Health Statistics Unit.
Contact 619.692.6672.
https://www.sandiegocounty.gov/hhsa/programs/phs/community_health_statistics/
August, 2023.
LiveWellSD.org.





Death Rates Among White Residents* San Diego County, by Subregional Area, 2021



*Multiple/contributing cause of death among San Diego County residents. Rates per 100,000 residents; not calculated for <11 cases. The COVID-19 pandemic was associated with increases in all-cause mortality. COVID-19 deaths have affected the patterns of mortality including death rates.
Sources: California Department of Public Health, Center for Health Statistics, Office of Health Information and Research, Vital Records Business Intelligence System (VRBIS), 2021. Population Estimates, 2021 (v09/2022) were derived using the 2010 Census and should be considered preliminary.

Maps & Analysis by County of San Diego, Health and Human Services Agency, Public Health Services, Community Health Statistics Unit.
Contact 619.692.6672.
https://www.sandiegocounty.gov/hhsa/programs/phs/community_health_statistics/
August, 2023.
LiveWellSD.org.



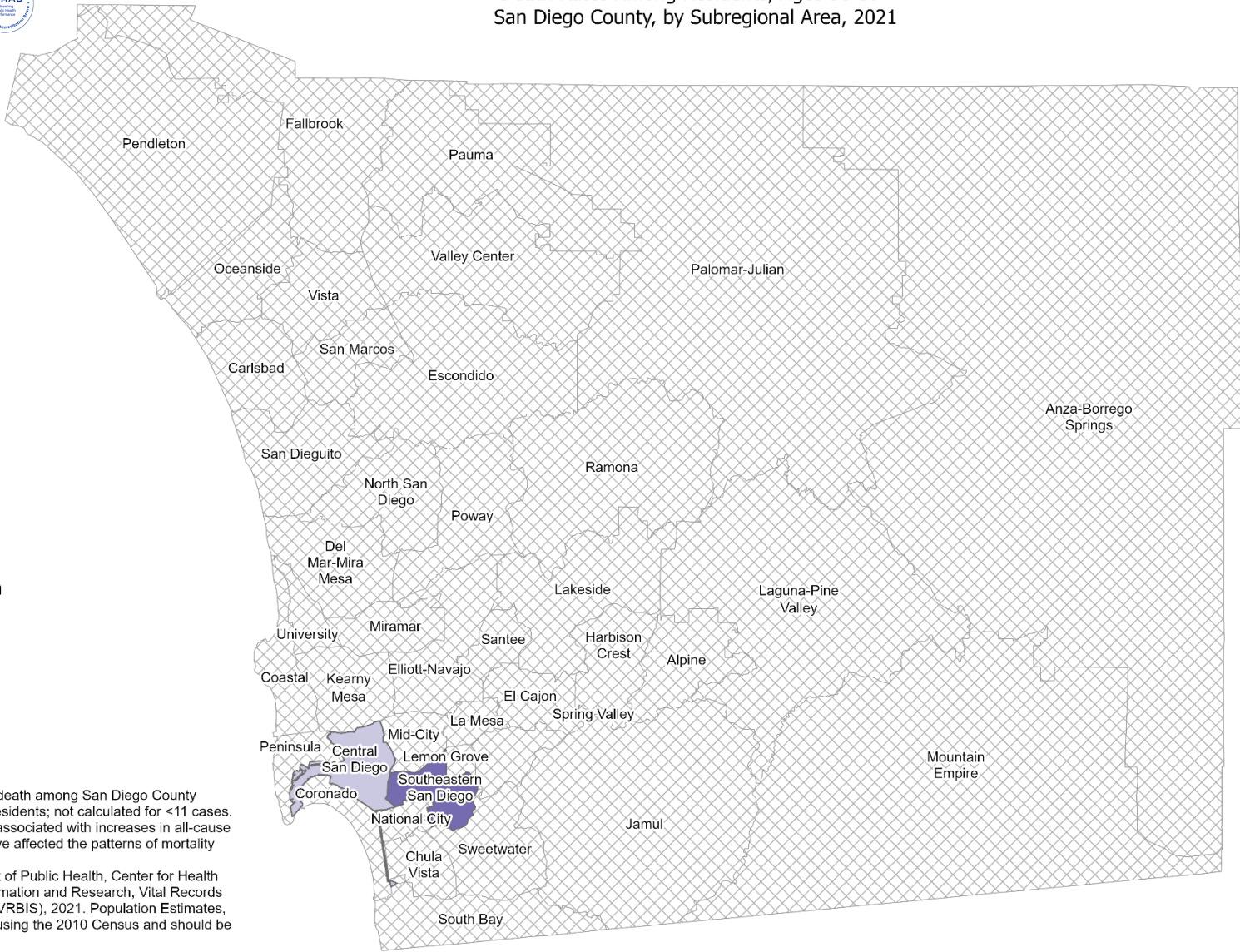


Death Rates Among Residents, Ages 30-39* San Diego County, by Subregional Area, 2021



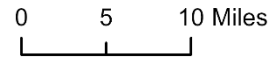
Stimulant Overdoses

- 41.8 - 53.5
- 53.6 - 65.2
- Data not shown



*Multiple/contributing cause of death among San Diego County residents. Rates per 100,000 residents; not calculated for <11 cases. The COVID-19 pandemic was associated with increases in all-cause mortality. COVID-19 deaths have affected the patterns of mortality including death rates.
Sources: California Department of Public Health, Center for Health Statistics, Office of Health Information and Research, Vital Records Business Intelligence System (VRBIS), 2021. Population Estimates, 2021 (v09/2022) were derived using the 2010 Census and should be considered preliminary.

Maps & Analysis by County of San Diego, Health and Human Services Agency, Public Health Services, Community Health Statistics Unit. Contact 619.692.6672.
https://www.sandiegocounty.gov/hhsa/programs/phs/community_health_statistics/.
August, 2023.
LiveWellSD.org.

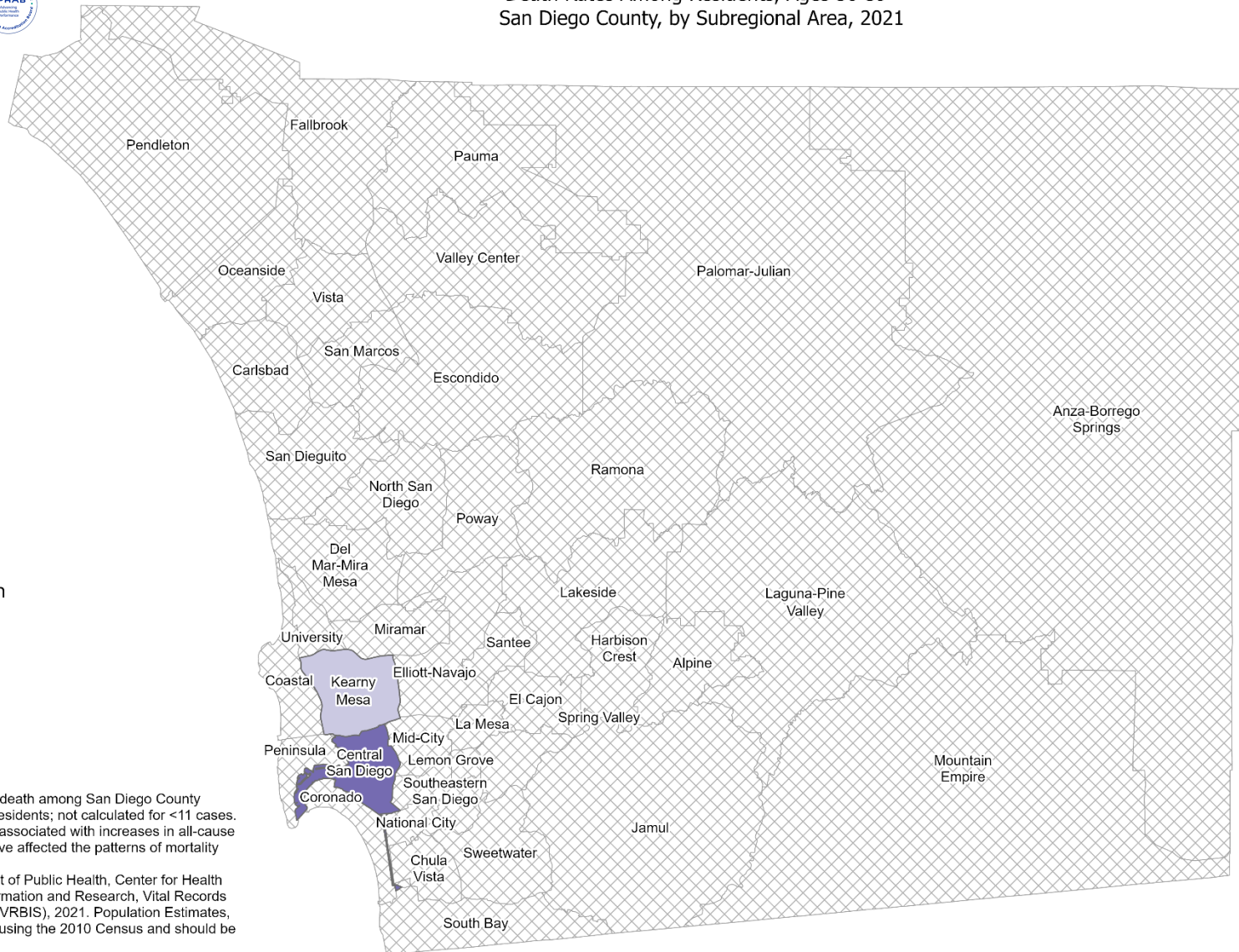
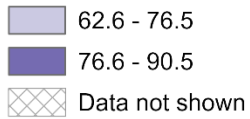




Death Rates Among Residents, Ages 50-59* San Diego County, by Subregional Area, 2021



Stimulant Overdoses



*Multiple/contributing cause of death among San Diego County residents. Rates per 100,000 residents; not calculated for <11 cases. The COVID-19 pandemic was associated with increases in all-cause mortality. COVID-19 deaths have affected the patterns of mortality including death rates.

Sources: California Department of Public Health, Center for Health Statistics, Office of Health Information and Research, Vital Records Business Intelligence System (VRBIS), 2021. Population Estimates, 2021 (v09/2022) were derived using the 2010 Census and should be considered preliminary.

Maps & Analysis by County of San Diego, Health and Human Services Agency, Public Health Services, Community Health Statistics Unit. Contact 619.692.6672.

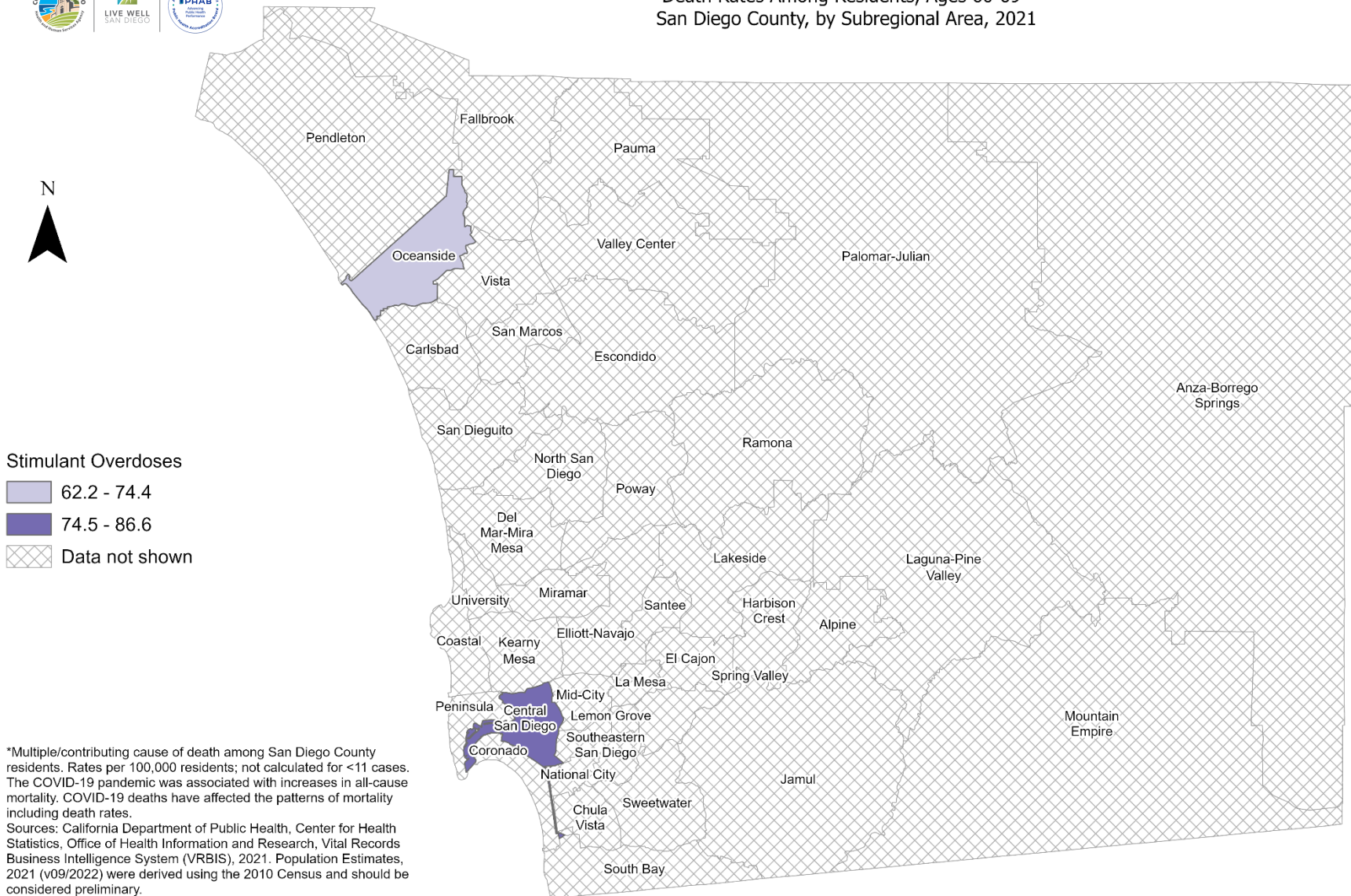
https://www.sandiegocounty.gov/hhsa/programs/phs/community_health_statistics/

August, 2023.
LiveWellSD.org.





Death Rates Among Residents, Ages 60-69* San Diego County, by Subregional Area, 2021



*Multiple/contributing cause of death among San Diego County residents. Rates per 100,000 residents; not calculated for <11 cases. The COVID-19 pandemic was associated with increases in all-cause mortality. COVID-19 deaths have affected the patterns of mortality including death rates.
Sources: California Department of Public Health, Center for Health Statistics, Office of Health Information and Research, Vital Records Business Intelligence System (VRBIS), 2021. Population Estimates, 2021 (v09/2022) were derived using the 2010 Census and should be considered preliminary.

Maps & Analysis by County of San Diego, Health and Human Services Agency, Public Health Services, Community Health Statistics Unit.
Contact 619.692.6672.
https://www.sandiegocounty.gov/hhsa/programs/phs/community_health_statistics/
August, 2023.
LiveWellSD.org.



SECTION 2

Hospitalization Rates Among San Diego County Residents by Demographics, 2021:

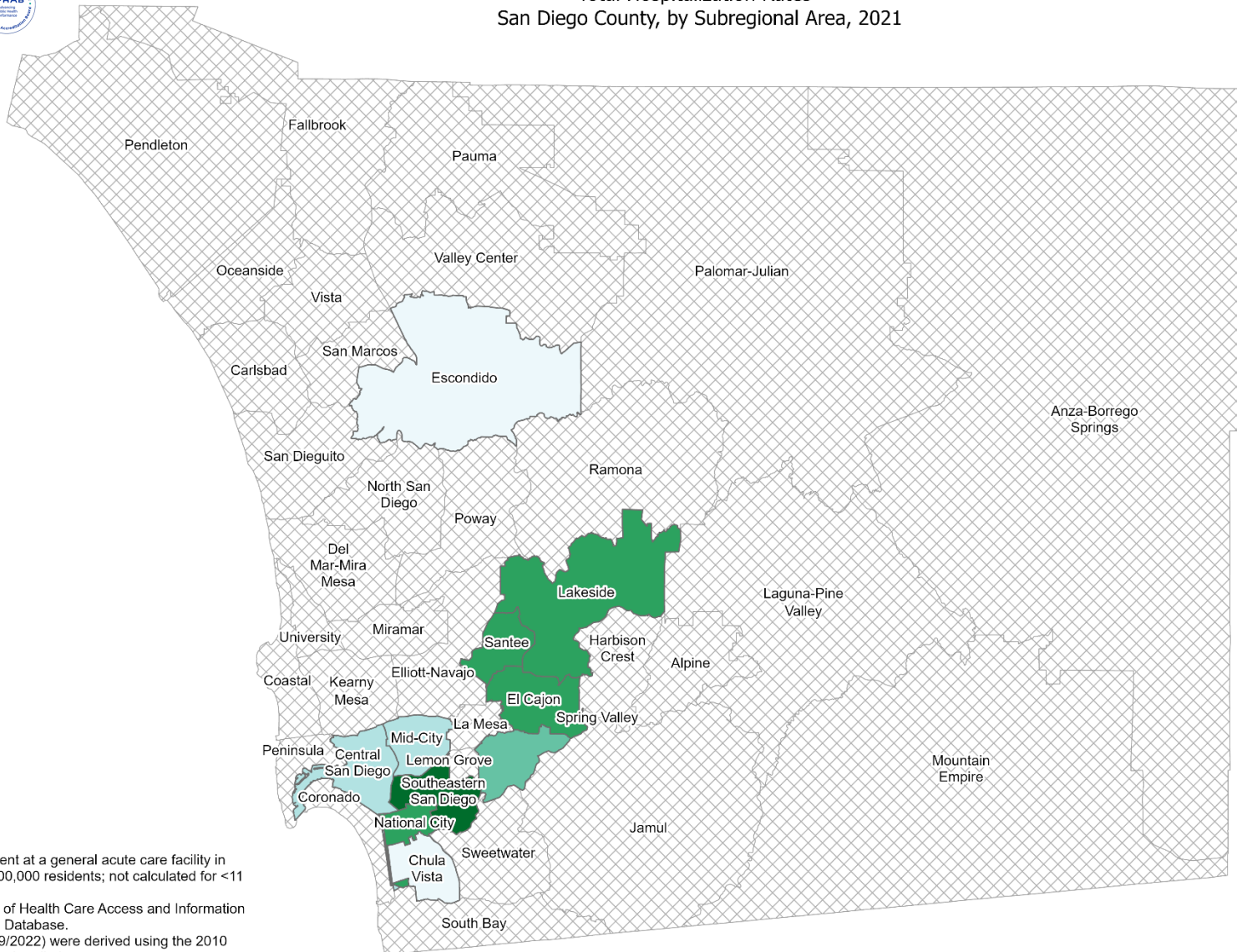
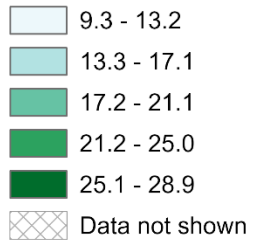
- Total Rate
 - Race/Ethnicity
 - Asian/Pacific Islander (API)
 - Black
 - Hispanic
 - White
 - Age Group
 - 0-9 Years
 - 10-19 Years
 - 20-29 Years
 - 30-39 Years
 - 40-49 Years
 - 50-59 Years
 - 60-69 Years
 - 70-79 Years
 - 80+ Years



Total Hospitalization Rates* San Diego County, by Subregional Area, 2021



Stimulant Overdoses



*Hospitalization refers to treatment at a general acute care facility in San Diego County. Rates per 100,000 residents; not calculated for <11 cases.
Sources: California Department of Health Care Access and Information (HCAI), 2021 Patient Discharge Database.
Population Estimates, 2021 (v09/2022) were derived using the 2010 Census and should be considered preliminary.

Maps & Analysis by County of San Diego, Health and Human Services Agency, Public Health Services, Community Health Statistics Unit.
Contact 619.692.6672. https://www.sandiegocounty.gov/hhsa/programs/phs/community_health_statistics/.
August, 2023.
LiveWellSD.org.

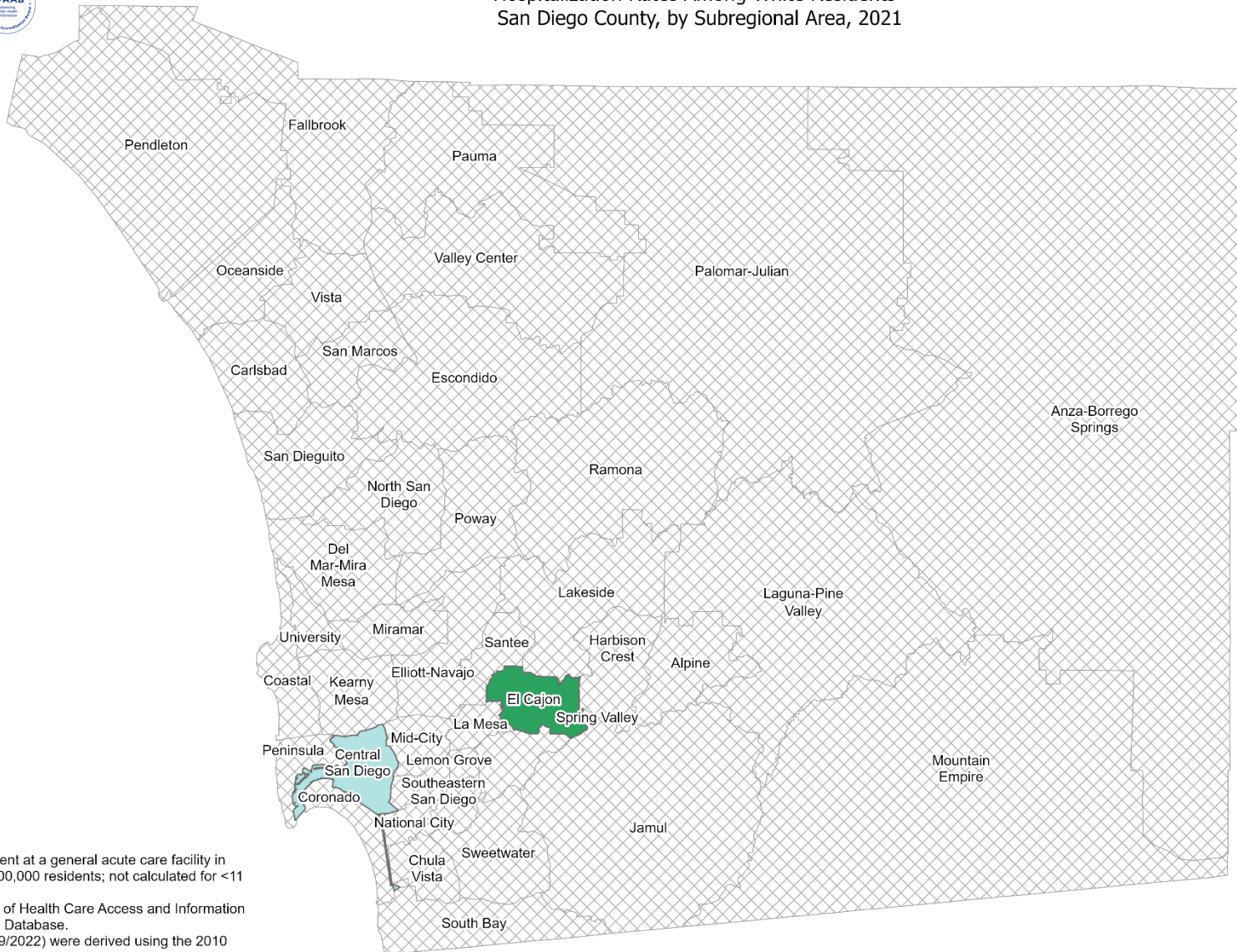




Hospitalization Rates Among White Residents* San Diego County, by Subregional Area, 2021



- Stimulant Overdoses**
- 12.6 - 14.7
 - 14.8 - 16.8
 - Data not shown



*Hospitalization refers to treatment at a general acute care facility in San Diego County. Rates per 100,000 residents; not calculated for <11 cases.
Sources: California Department of Health Care Access and Information (HCAI), 2021 Patient Discharge Database.
Population Estimates, 2021 (v09/2022) were derived using the 2010 Census and should be considered preliminary.

Maps & Analysis by County of San Diego, Health and Human Services Agency, Public Health Services, Community Health Statistics Unit.
Contact 619.692.6672. https://www.sandiegocounty.gov/hhsa/programs/phs/community_health_statistics/.
August, 2023.
LiveWellSD.org.



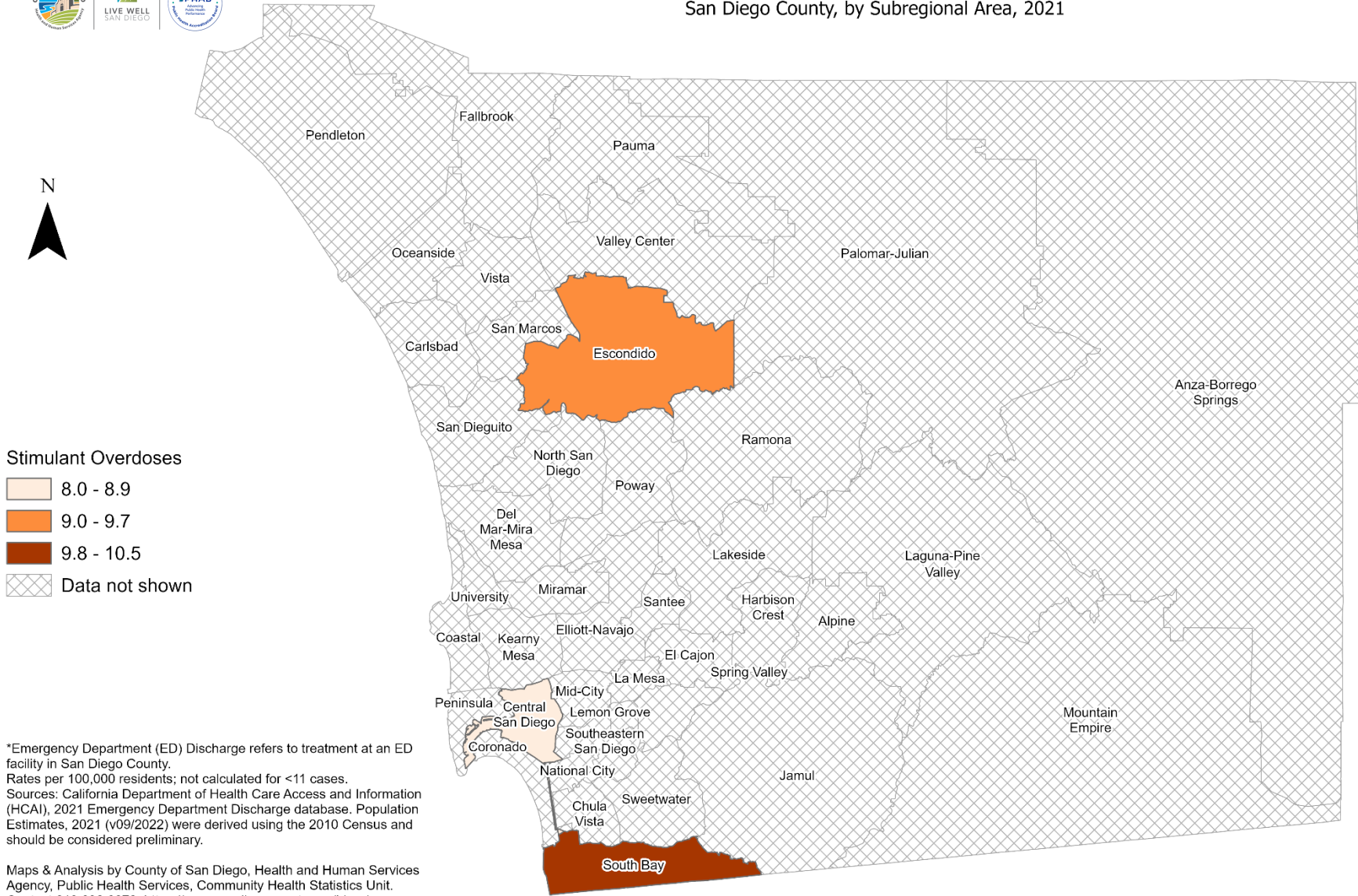
SECTION 3

Emergency Department (ED) Rates Among San Diego County Residents by Demographics, 2021:

- Total Rate
 - Race/Ethnicity
 - Asian/Pacific Islander (API)
 - Black
 - Hispanic
 - White
 - Age Group
 - 0-9 Years
 - 10-19 Years
 - 20-29 Years
 - 30-39 Years
 - 40-49 Years
 - 50-59 Years
 - 60-69 Years
 - 70-79 Years
 - 80+ Years



Total Emergency Department Discharge Rates* San Diego County, by Subregional Area, 2021

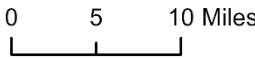


Stimulant Overdoses

- 8.0 - 8.9
- 9.0 - 9.7
- 9.8 - 10.5
- Data not shown

*Emergency Department (ED) Discharge refers to treatment at an ED facility in San Diego County. Rates per 100,000 residents; not calculated for <11 cases. Sources: California Department of Health Care Access and Information (HCAI), 2021 Emergency Department Discharge database. Population Estimates, 2021 (v09/2022) were derived using the 2010 Census and should be considered preliminary.

Maps & Analysis by County of San Diego, Health and Human Services Agency, Public Health Services, Community Health Statistics Unit. Contact 619.692.6672. https://www.sandiegocounty.gov/hhsa/programs/phs/community_health_statistics/. August, 2023. LiveWellSD.org.



SECTION 4



In-Patient Treatment (IPT) Rates Among San Diego County Residents by Demographics, 2021:

- Total Rate
 - Race/Ethnicity
 - Asian/Pacific Islander (API)
 - Black
 - Hispanic
 - White
 - Age Group
 - 0-9 Years
 - 10-19 Years
 - 20-29 Years
 - 30-39 Years
 - 40-49 Years
 - 50-59 Years
 - 60-69 Years
 - 70-79 Years
 - 80+ Years

-
-
-
-
-

**No SRA-level rate data
available for this section.**