



2021 MAP ATLAS

Stroke

AUGUST 2023



County of San Diego | Health and Human Services Agency | Public Health Services | Community Health Statistics Unit



Data Sources

Death* is based on underlying cause of death among San Diego County residents. Rates calculated per 100,000 residents. Rates not calculated for < 11 cases. Maps not produced for conditions/outcomes with no SRA-level rates. Some sections may have no maps.

Sources: California Department of Public Health, Center for Health Statistics, Office of Health Information and Research, Vital Records Business Intelligence System (VRBIS), 2021. ***The COVID-19 pandemic was associated with increases in all-cause mortality. COVID-19 deaths have affected the patterns of mortality.*** SANDAG: San Diego Association of Governments (SANDAG) Population Estimates, 2021 (v09/2022). ***Population estimates for 2021 were derived using the 2010 Census and data should be considered preliminary.***

*For substance/drug overdoses, death rate is based on the multiple/contributing cause of death among San Diego County residents.

Hospitalization refers to treatment at a general acute care facility in San Diego County. Rates calculated per 100,000 residents. Rates not calculated for < 11 cases. Maps not produced for conditions/outcomes with no SRA-level rates. Some sections may have no maps.

Sources: California Department of Health Care Access and Information (HCAI), Patient Discharge Database, 2021. San Diego Association of Governments (SANDAG) Population Estimates, 2021 (v09/2022). ***Population estimates for 2021 were derived using the 2010 Census and data should be considered preliminary.***

Emergency Department (ED) Discharge refers to treatment at an ED facility in San Diego County.

Rates calculated per 100,000 residents. Rates not calculated for < 11 cases. Maps not produced for conditions/outcomes with no SRA-level rates. Some sections may have no maps.

Sources: California Department of Health Care Access and Information (HCAI), Emergency Department Discharge Database, 2021. San Diego Association of Governments (SANDAG) Population Estimates, 2021 (v09/2022). ***Population estimates for 2021 were derived using the 2010 Census and data should be considered preliminary.***

In-Patient Treatment (IPT) refers to treatment at a psychiatric care or chemical rehabilitation facility in San Diego County. Rates calculated per 100,000 residents. Rates not calculated for < 11 cases. Maps not produced for conditions/outcomes with no SRA-level rates. Some sections may have no maps.

Sources: California Department of Health Care Access and Information (HCAI), Patient Discharge Database, 2021. San Diego Association of Governments (SANDAG) Population Estimates, 2021 (v09/2022). ***Population estimates for 2021 were derived using the 2010 Census and data should be considered preliminary.***

Maps & Analysis by County of San Diego, Health and Human Services Agency, Public Health Services, Community Health Statistics Unit. Contact 619.692.6672. August 2023.

https://www.sandiegocounty.gov/hhsa/programs/phs/community_health_statistics/LiveWellSD.org.

For more detailed explanation of geography, methods, and sources, please refer to CHSU's [2020 Community Profiles Data Guide and Data Dictionary Dashboards](#).

Table of Contents

Section 1: Deaths	1
Section 2: Hospitalizations	9
Section 3: Emergency Department (ED) Discharges	21
Section 4: In-Patient Treatments (IPT).....	31

SECTION 1



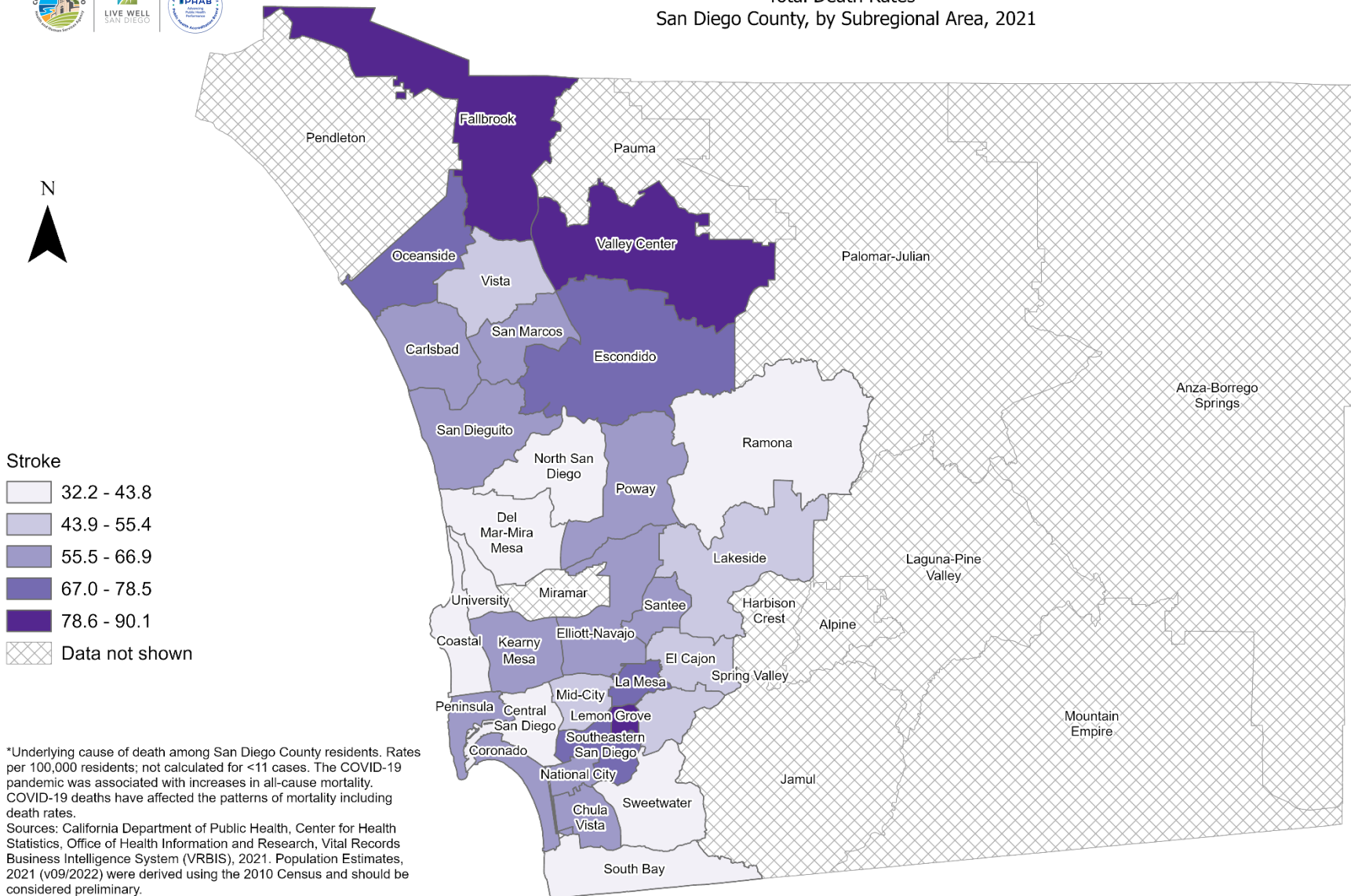
Death Rates Among San Diego County Residents by Demographics, 2021:

- Total Rate
 - Race/Ethnicity
 - Asian/Pacific Islander (API)
 - Black
 - Hispanic
 - White
 - Age Group
 - 0-9 Years
 - 10-19 Years
 - 20-29 Years
 - 30-39 Years
 - 40-49 Years
 - 50-59 Years
 - 60-69 Years
 - 70-79 Years
 - 80+ Years



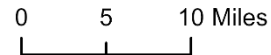


Total Death Rates* San Diego County, by Subregional Area, 2021



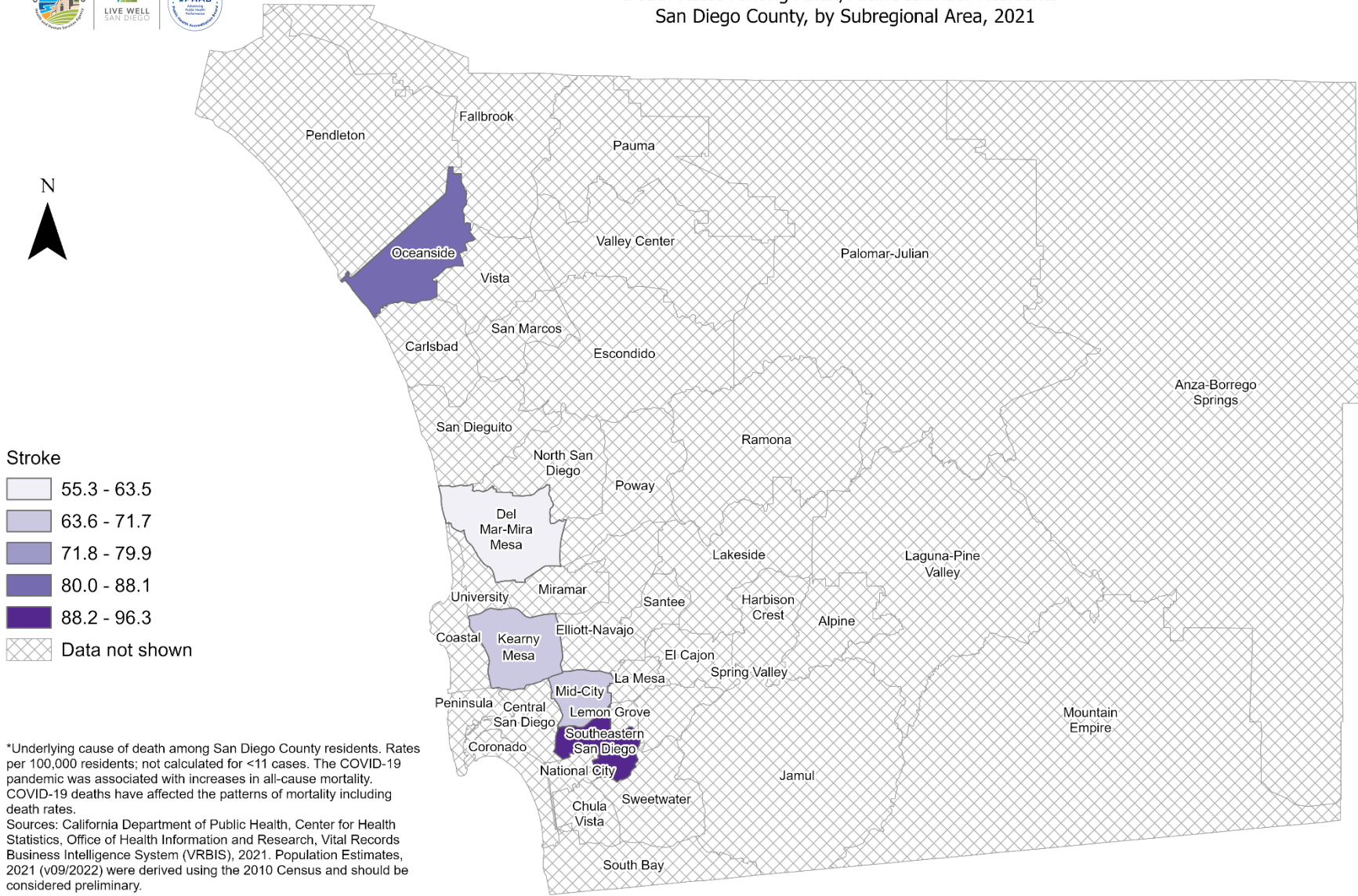
*Underlying cause of death among San Diego County residents. Rates per 100,000 residents; not calculated for <11 cases. The COVID-19 pandemic was associated with increases in all-cause mortality. COVID-19 deaths have affected the patterns of mortality including death rates.
Sources: California Department of Public Health, Center for Health Statistics, Office of Health Information and Research, Vital Records Business Intelligence System (VRBIS), 2021. Population Estimates, 2021 (v09/2022) were derived using the 2010 Census and should be considered preliminary.

Maps & Analysis by County of San Diego, Health and Human Services Agency, Public Health Services, Community Health Statistics Unit.
Contact 619.692.6672.
https://www.sandiegocounty.gov/hhsa/programs/phs/community_health_statistics/
August, 2023.
LiveWellSD.org.



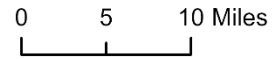


Death Rates Among Asian/Pacific Islander Residents* San Diego County, by Subregional Area, 2021



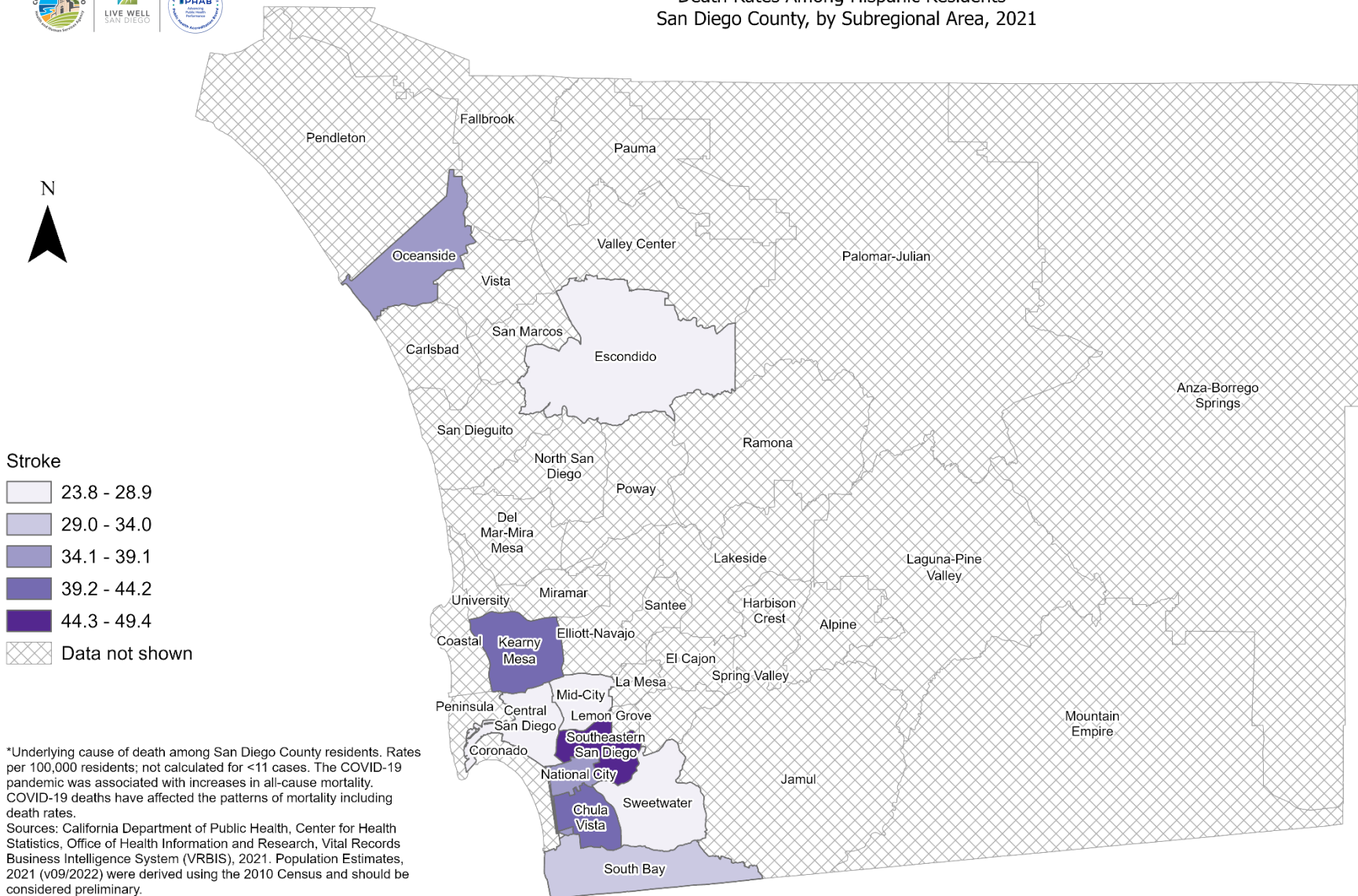
*Underlying cause of death among San Diego County residents. Rates per 100,000 residents; not calculated for <11 cases. The COVID-19 pandemic was associated with increases in all-cause mortality. COVID-19 deaths have affected the patterns of mortality including death rates.
Sources: California Department of Public Health, Center for Health Statistics, Office of Health Information and Research, Vital Records Business Intelligence System (VRBIS), 2021. Population Estimates, 2021 (v09/2022) were derived using the 2010 Census and should be considered preliminary.

Maps & Analysis by County of San Diego, Health and Human Services Agency, Public Health Services, Community Health Statistics Unit.
Contact 619.692.6672.
https://www.sandiegocounty.gov/hhsa/programs/phs/community_health_statistics/
August, 2023.
LiveWellSD.org.





Death Rates Among Hispanic Residents* San Diego County, by Subregional Area, 2021



Stroke

- 23.8 - 28.9
- 29.0 - 34.0
- 34.1 - 39.1
- 39.2 - 44.2
- 44.3 - 49.4
- Data not shown

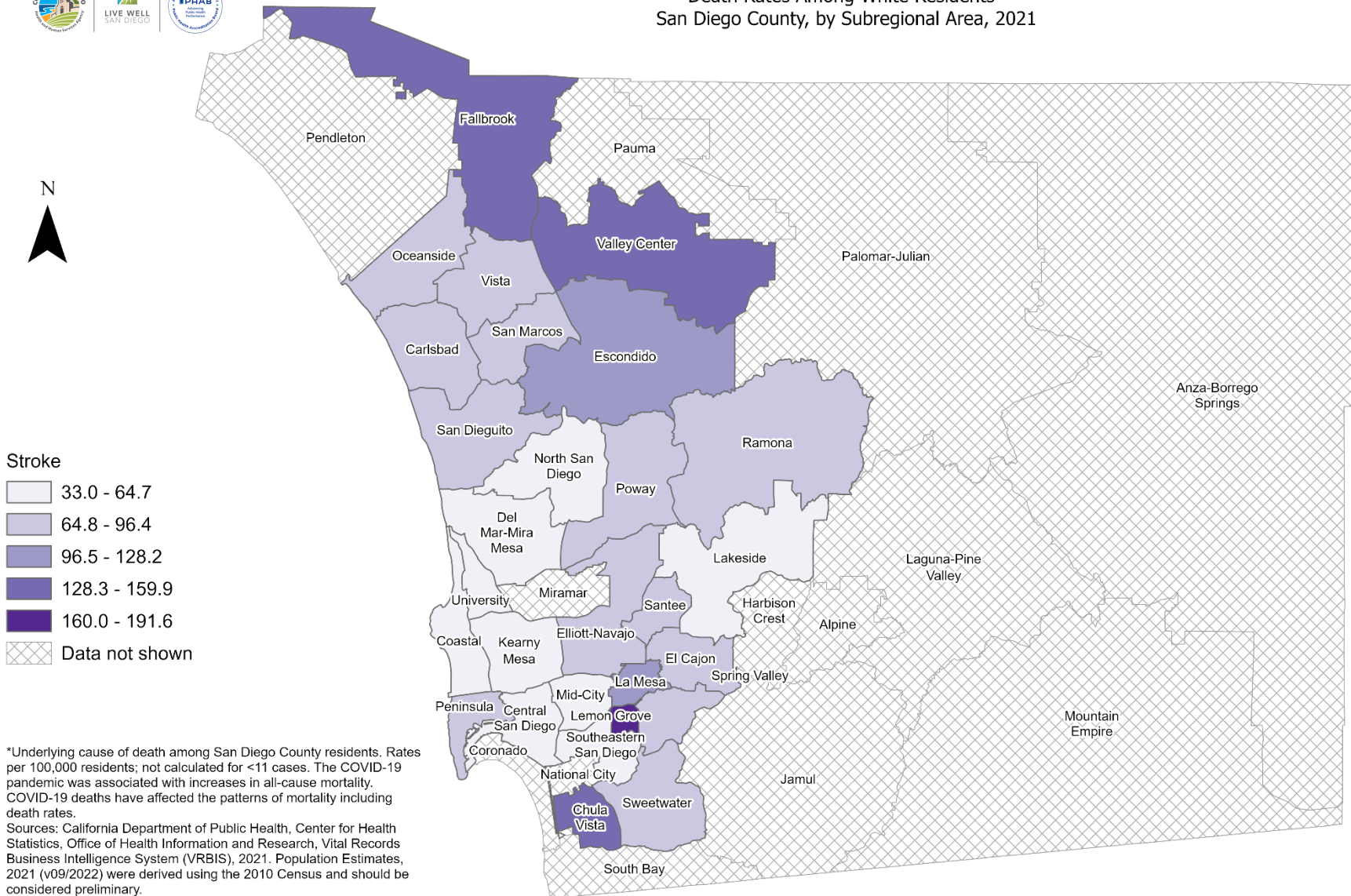
*Underlying cause of death among San Diego County residents. Rates per 100,000 residents; not calculated for <11 cases. The COVID-19 pandemic was associated with increases in all-cause mortality. COVID-19 deaths have affected the patterns of mortality including death rates.
Sources: California Department of Public Health, Center for Health Statistics, Office of Health Information and Research, Vital Records Business Intelligence System (VRBIS), 2021. Population Estimates, 2021 (v09/2022) were derived using the 2010 Census and should be considered preliminary.

Maps & Analysis by County of San Diego, Health and Human Services Agency, Public Health Services, Community Health Statistics Unit. Contact 619.692.6672.
https://www.sandiegocounty.gov/hhsa/programs/phs/community_health_statistics/.
August, 2023.
LiveWellSD.org.



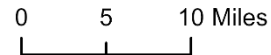


Death Rates Among White Residents* San Diego County, by Subregional Area, 2021



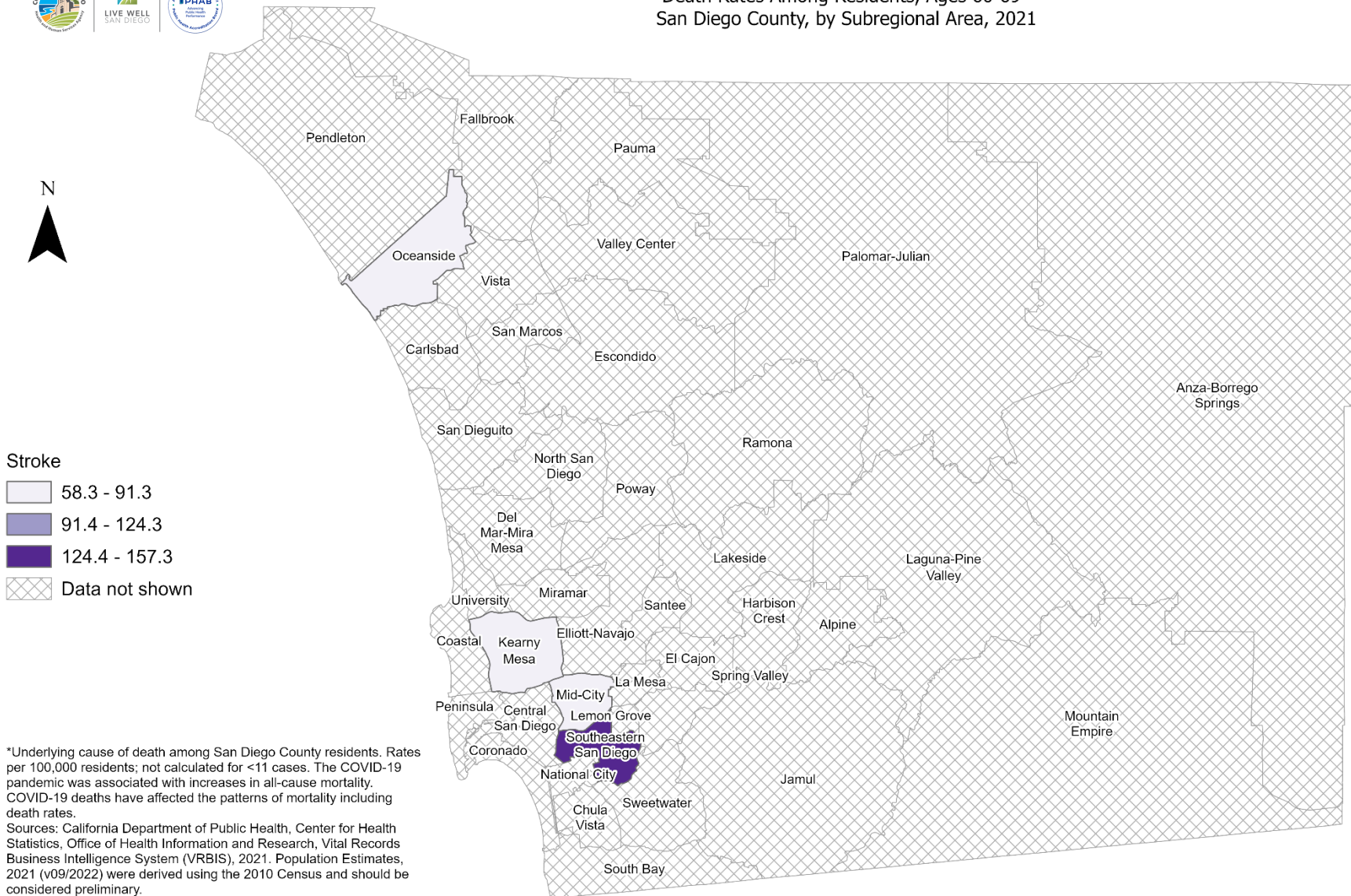
*Underlying cause of death among San Diego County residents. Rates per 100,000 residents; not calculated for <11 cases. The COVID-19 pandemic was associated with increases in all-cause mortality. COVID-19 deaths have affected the patterns of mortality including death rates.
Sources: California Department of Public Health, Center for Health Statistics, Office of Health Information and Research, Vital Records Business Intelligence System (VRBIS), 2021. Population Estimates, 2021 (v09/2022) were derived using the 2010 Census and should be considered preliminary.

Maps & Analysis by County of San Diego, Health and Human Services Agency, Public Health Services, Community Health Statistics Unit.
Contact 619.692.6672.
https://www.sandiegocounty.gov/hhsa/programs/phs/community_health_statistics/
August, 2023.
LiveWellSD.org.





Death Rates Among Residents, Ages 60-69* San Diego County, by Subregional Area, 2021

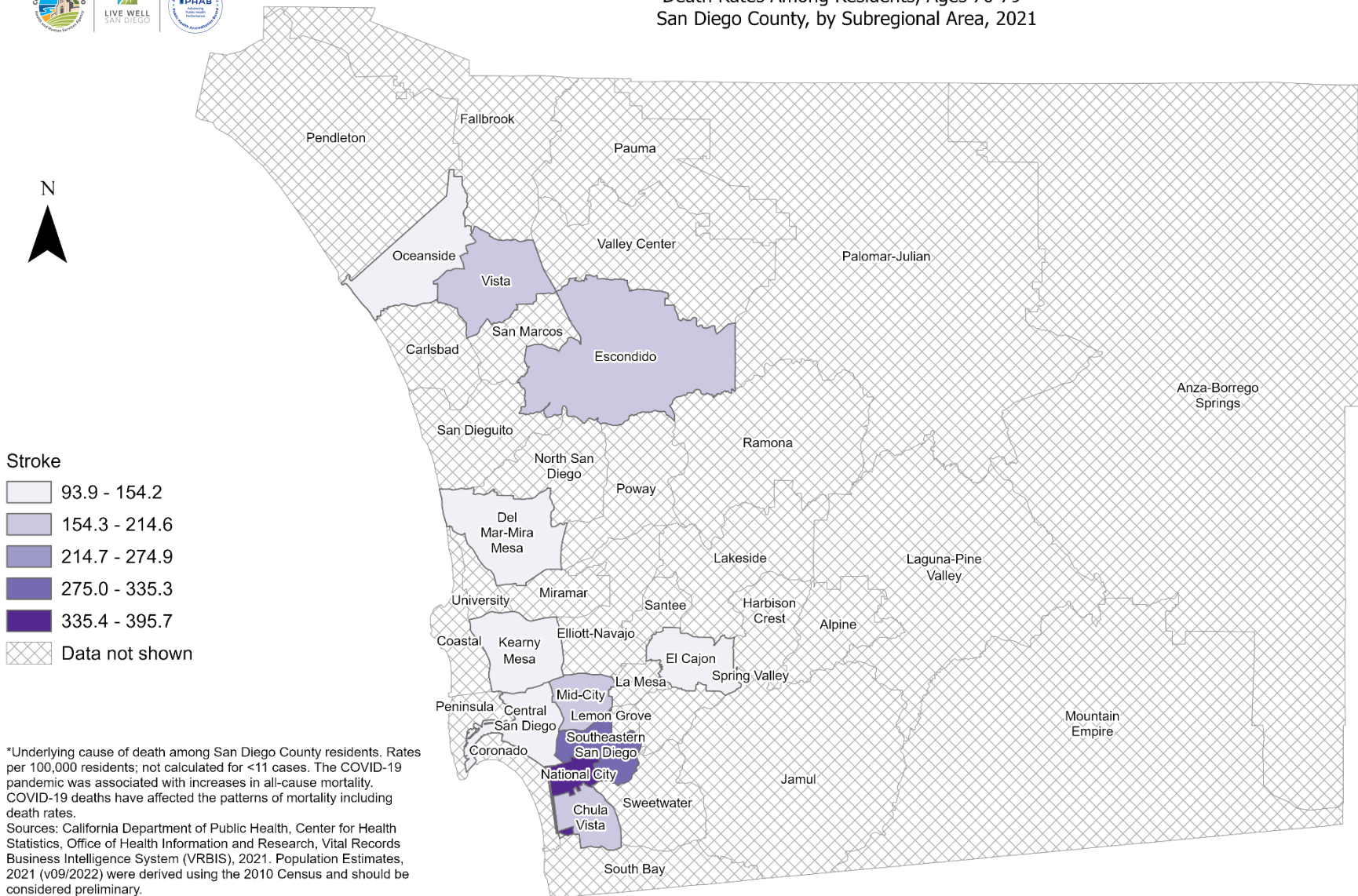


Maps & Analysis by County of San Diego, Health and Human Services Agency, Public Health Services, Community Health Statistics Unit.
 Contact 619.692.6672.
https://www.sandiegocounty.gov/hhsa/programs/phs/community_health_statistics/
 August, 2023.
 LiveWellSD.org.





Death Rates Among Residents, Ages 70-79* San Diego County, by Subregional Area, 2021



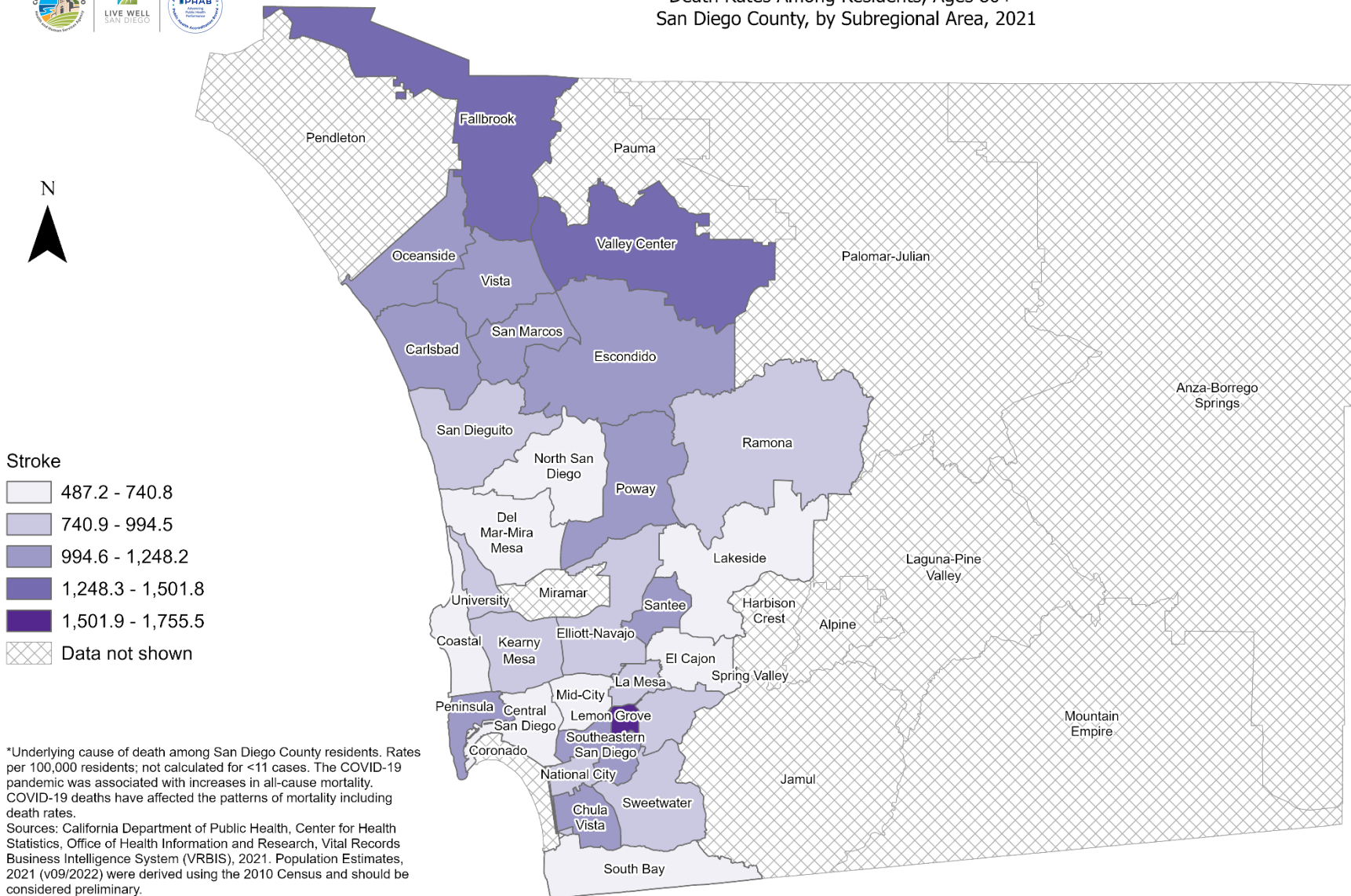
Maps & Analysis by County of San Diego, Health and Human Services Agency, Public Health Services, Community Health Statistics Unit.
Contact 619.692.6672.
https://www.sandiegocounty.gov/hhsa/programs/phs/community_health_statistics/
August, 2023.
LiveWellSD.org.

0 5 10 Miles



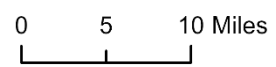


Death Rates Among Residents, Ages 80+* San Diego County, by Subregional Area, 2021



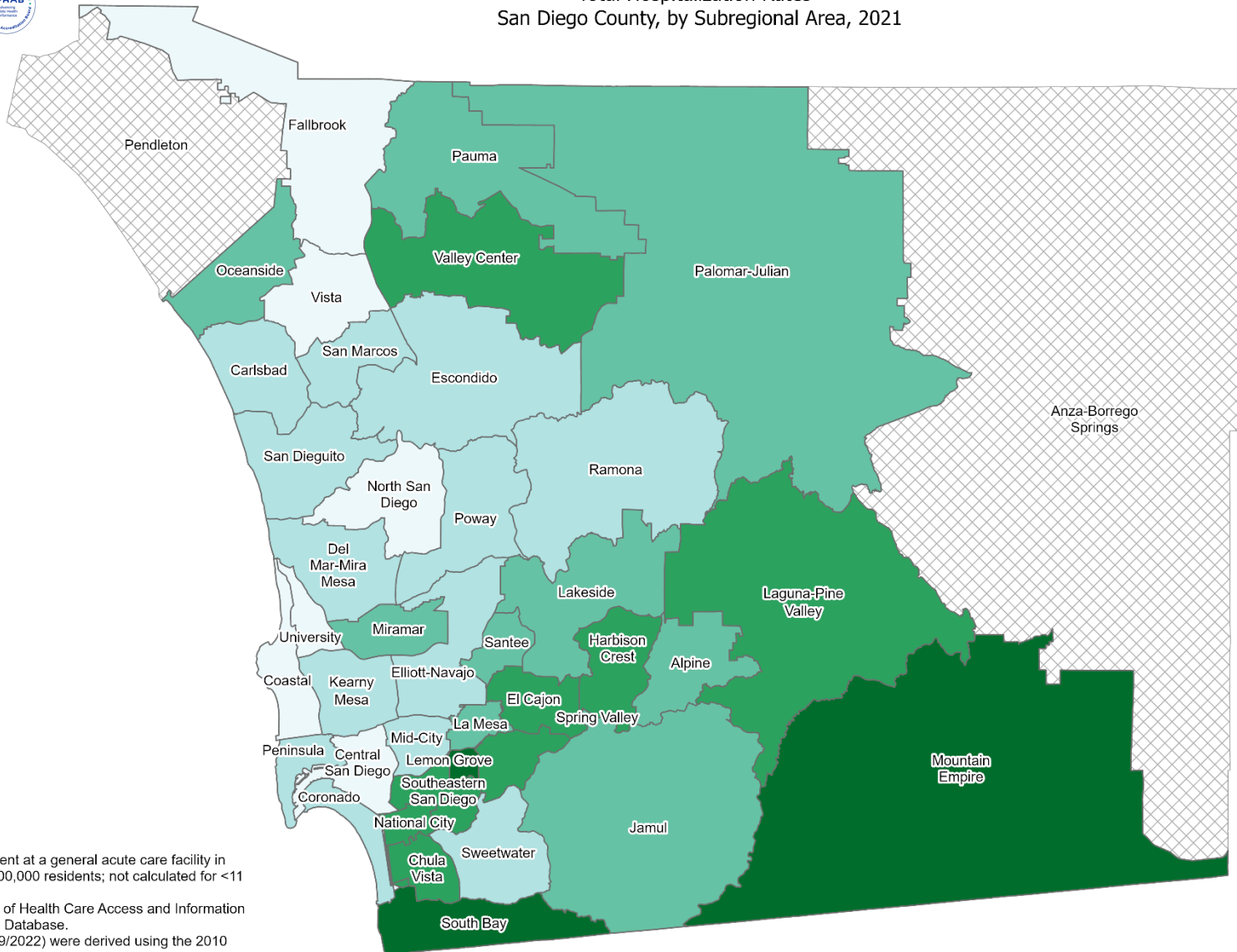
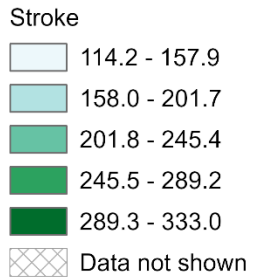
*Underlying cause of death among San Diego County residents. Rates per 100,000 residents; not calculated for <11 cases. The COVID-19 pandemic was associated with increases in all-cause mortality. COVID-19 deaths have affected the patterns of mortality including death rates.
Sources: California Department of Public Health, Center for Health Statistics, Office of Health Information and Research, Vital Records Business Intelligence System (VRBIS), 2021. Population Estimates, 2021 (v09/2022) were derived using the 2010 Census and should be considered preliminary.

Maps & Analysis by County of San Diego, Health and Human Services Agency, Public Health Services, Community Health Statistics Unit.
Contact 619.692.6672.
https://www.sandiegocounty.gov/hhsa/programs/phs/community_health_statistics/
August, 2023.
LiveWellSD.org.





Total Hospitalization Rates* San Diego County, by Subregional Area, 2021



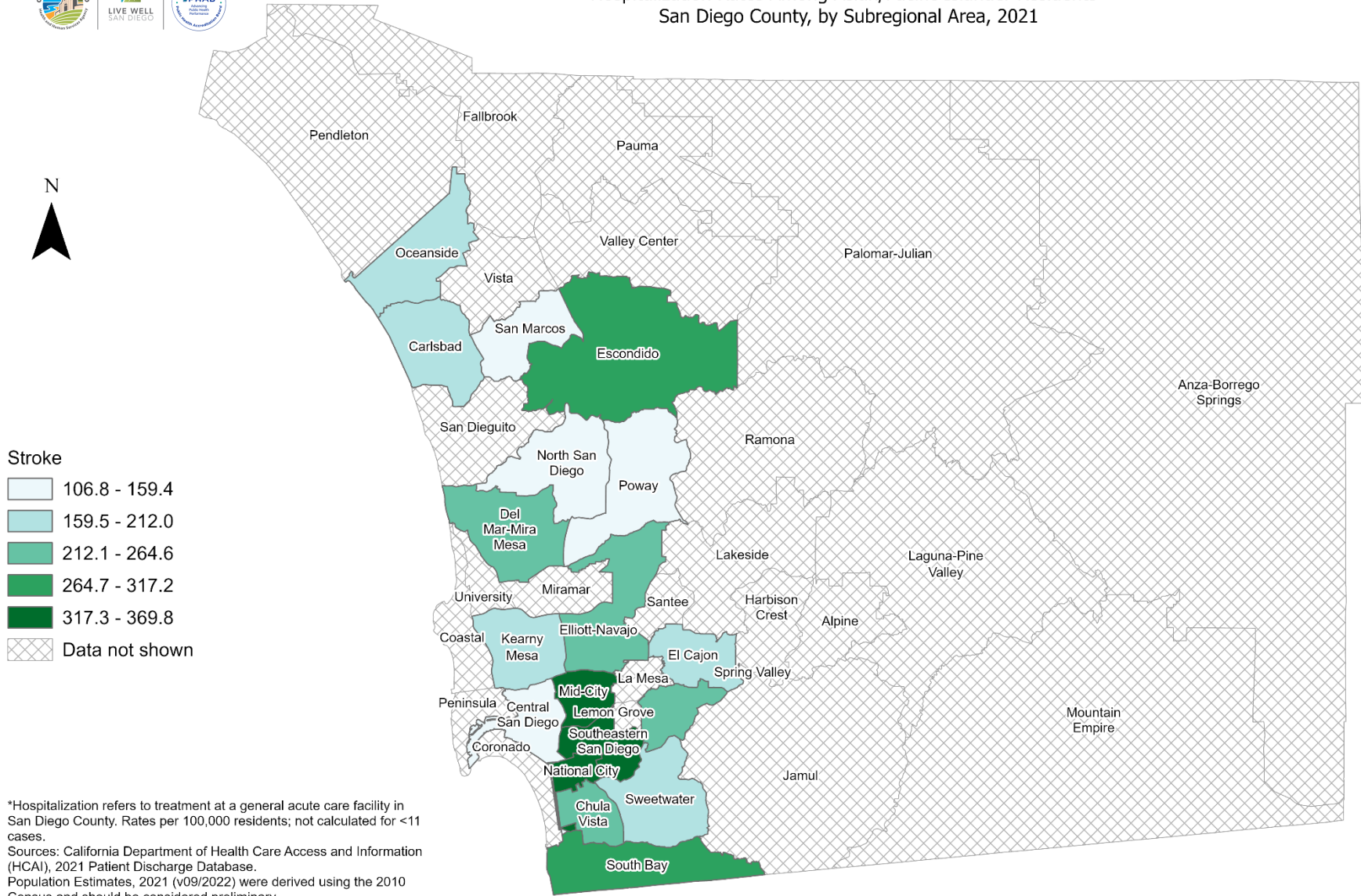
*Hospitalization refers to treatment at a general acute care facility in San Diego County. Rates per 100,000 residents; not calculated for <11 cases.
Sources: California Department of Health Care Access and Information (HCAI), 2021 Patient Discharge Database.
Population Estimates, 2021 (v09/2022) were derived using the 2010 Census and should be considered preliminary.

Maps & Analysis by County of San Diego, Health and Human Services Agency, Public Health Services, Community Health Statistics Unit.
Contact 619.692.6672. https://www.sandiegocounty.gov/hhsa/programs/phs/community_health_statistics/.
August, 2023.
LiveWellSD.org.



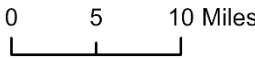


Hospitalization Rates Among Asian/Pacific Islander Residents* San Diego County, by Subregional Area, 2021



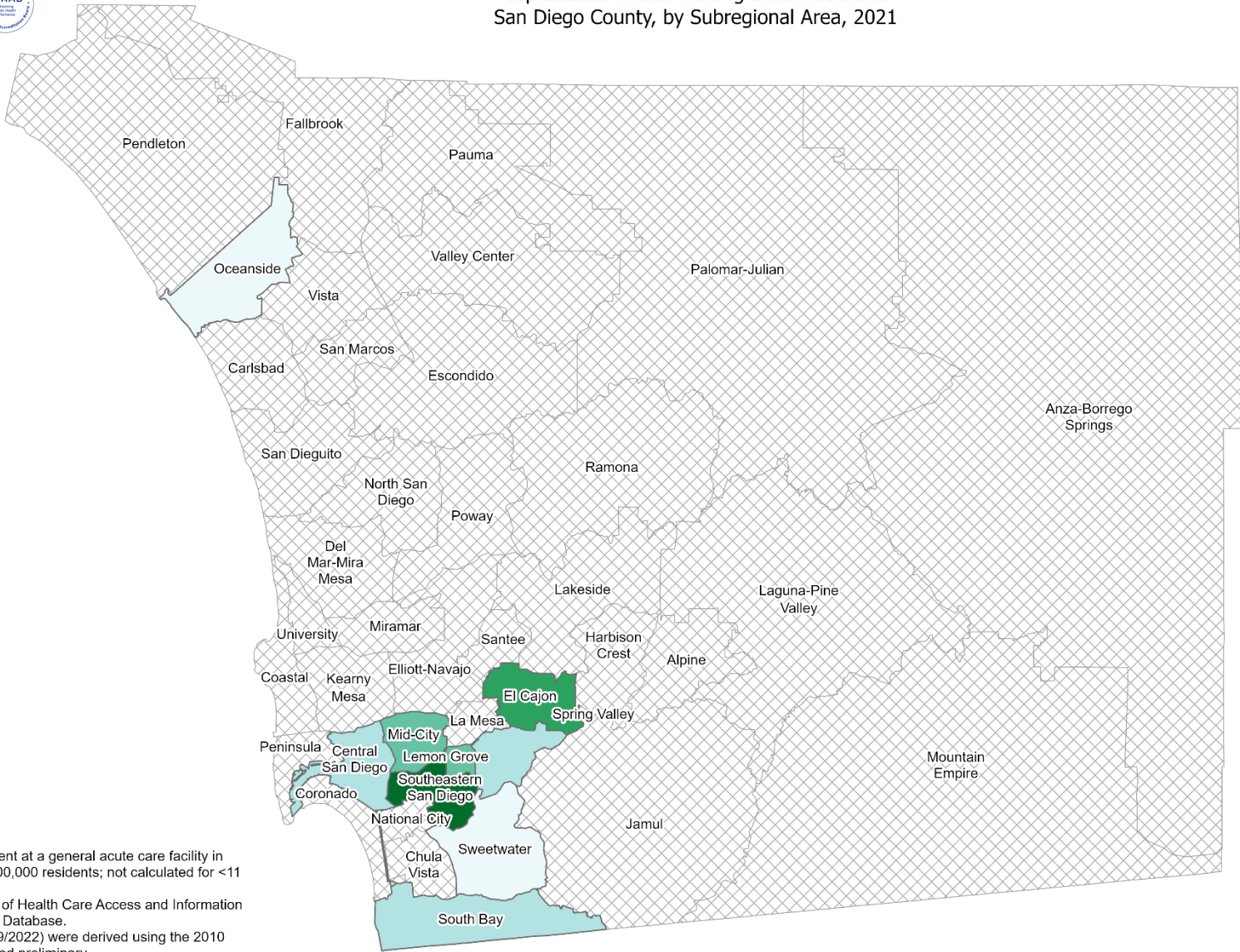
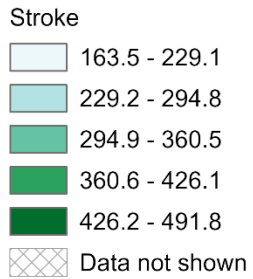
*Hospitalization refers to treatment at a general acute care facility in San Diego County. Rates per 100,000 residents; not calculated for <11 cases.
Sources: California Department of Health Care Access and Information (HCAI), 2021 Patient Discharge Database.
Population Estimates, 2021 (v09/2022) were derived using the 2010 Census and should be considered preliminary.

Maps & Analysis by County of San Diego, Health and Human Services Agency, Public Health Services, Community Health Statistics Unit.
Contact 619.692.6672. https://www.sandiegocounty.gov/hhsa/programs/phs/community_health_statistics/.
August, 2023.
LiveWellSD.org.



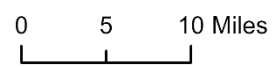


Hospitalization Rates Among Black Residents* San Diego County, by Subregional Area, 2021



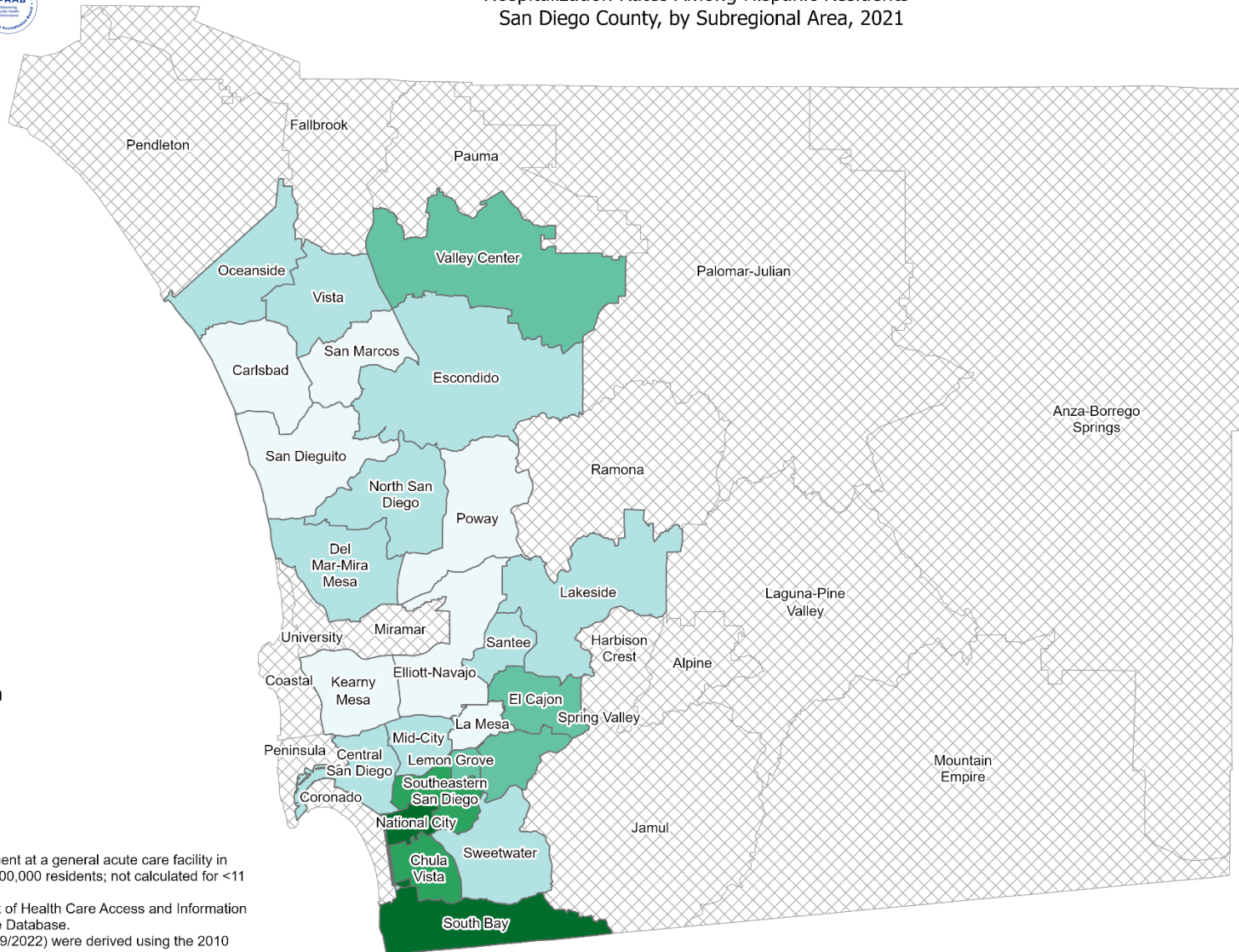
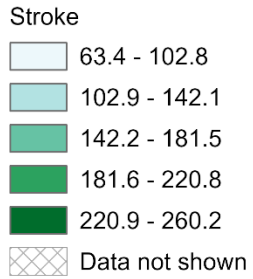
*Hospitalization refers to treatment at a general acute care facility in San Diego County. Rates per 100,000 residents; not calculated for <11 cases.
Sources: California Department of Health Care Access and Information (HCAI), 2021 Patient Discharge Database.
Population Estimates, 2021 (v09/2022) were derived using the 2010 Census and should be considered preliminary.

Maps & Analysis by County of San Diego, Health and Human Services Agency, Public Health Services, Community Health Statistics Unit.
Contact 619.692.6672. https://www.sandiegocounty.gov/hhsa/programs/phs/community_health_statistics/.
August, 2023.
LiveWellSD.org.





Hospitalization Rates Among Hispanic Residents* San Diego County, by Subregional Area, 2021



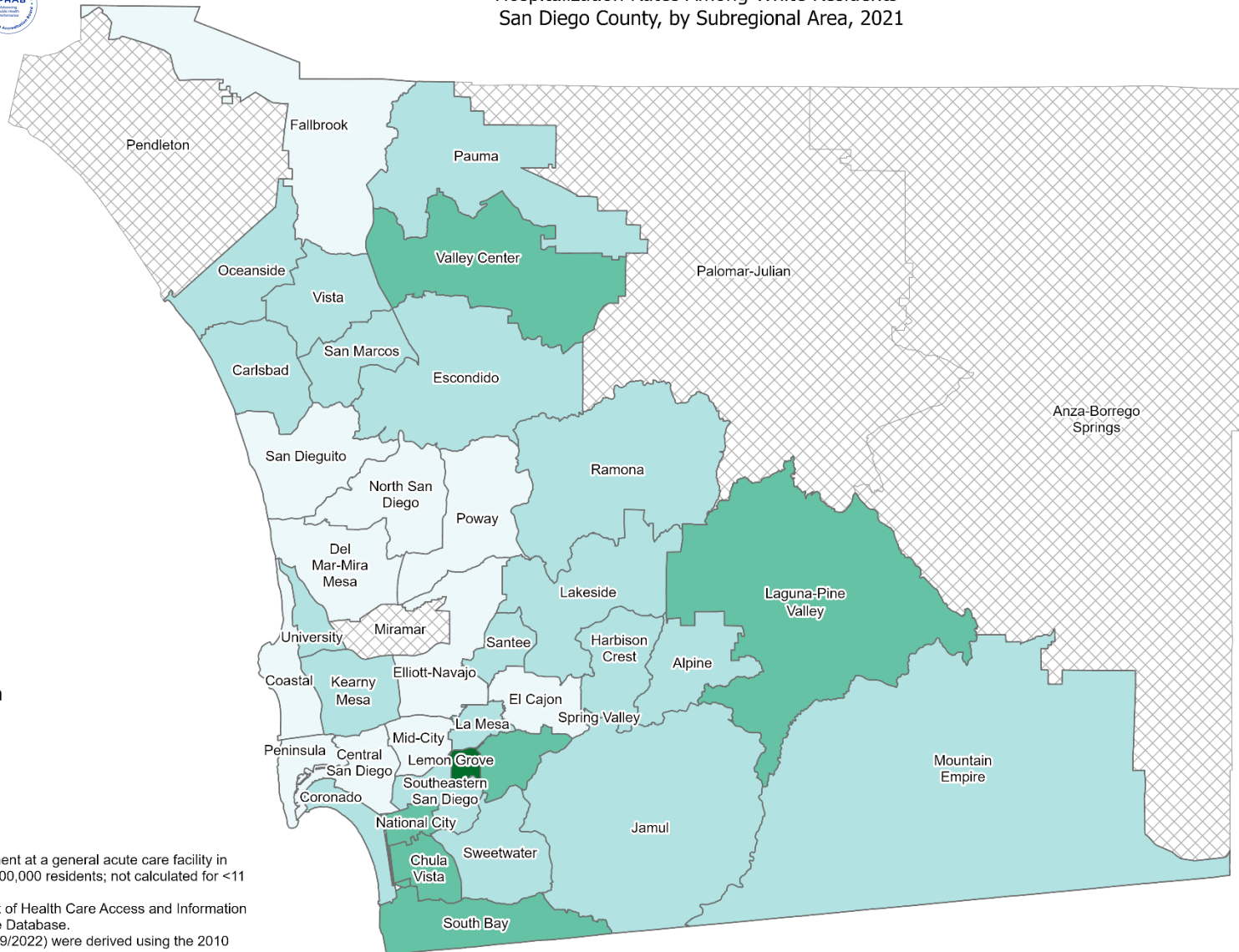
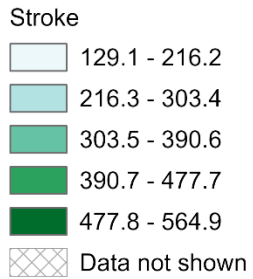
*Hospitalization refers to treatment at a general acute care facility in San Diego County. Rates per 100,000 residents; not calculated for <11 cases.
Sources: California Department of Health Care Access and Information (HCAI), 2021 Patient Discharge Database.
Population Estimates, 2021 (v09/2022) were derived using the 2010 Census and should be considered preliminary.

Maps & Analysis by County of San Diego, Health and Human Services Agency, Public Health Services, Community Health Statistics Unit.
Contact 619.692.6672. https://www.sandiegocounty.gov/hhsa/programs/phs/community_health_statistics/.
August, 2023.
LiveWellSD.org.



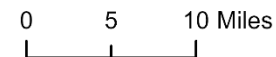


Hospitalization Rates Among White Residents* San Diego County, by Subregional Area, 2021



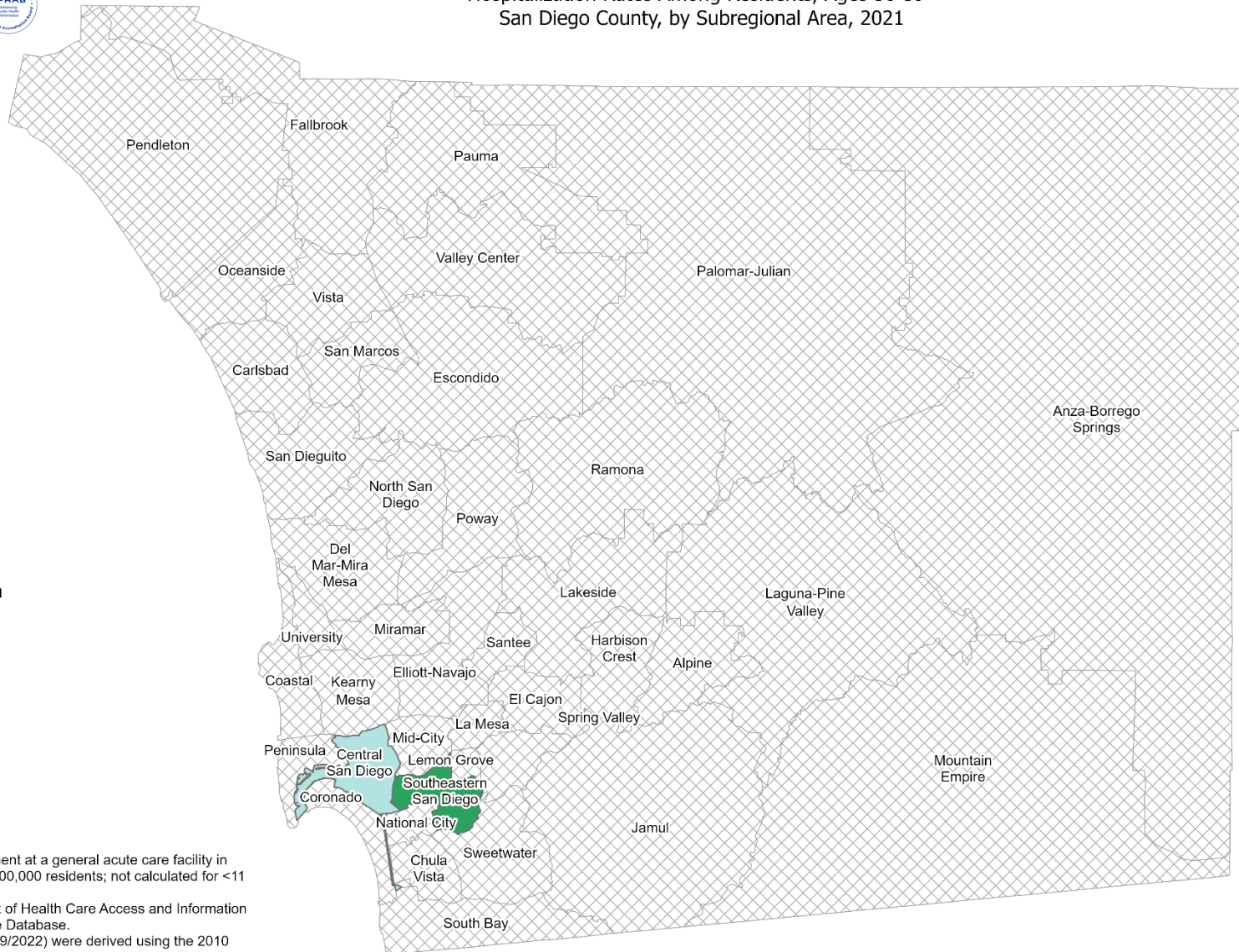
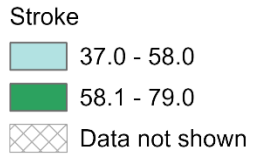
*Hospitalization refers to treatment at a general acute care facility in San Diego County. Rates per 100,000 residents; not calculated for <11 cases.
Sources: California Department of Health Care Access and Information (HCAI), 2021 Patient Discharge Database.
Population Estimates, 2021 (v09/2022) were derived using the 2010 Census and should be considered preliminary.

Maps & Analysis by County of San Diego, Health and Human Services Agency, Public Health Services, Community Health Statistics Unit.
Contact 619.692.6672. https://www.sandiegocounty.gov/hhsa/programs/phs/community_health_statistics/.
August, 2023.
LiveWellSD.org.





Hospitalization Rates Among Residents, Ages 30-39* San Diego County, by Subregional Area, 2021



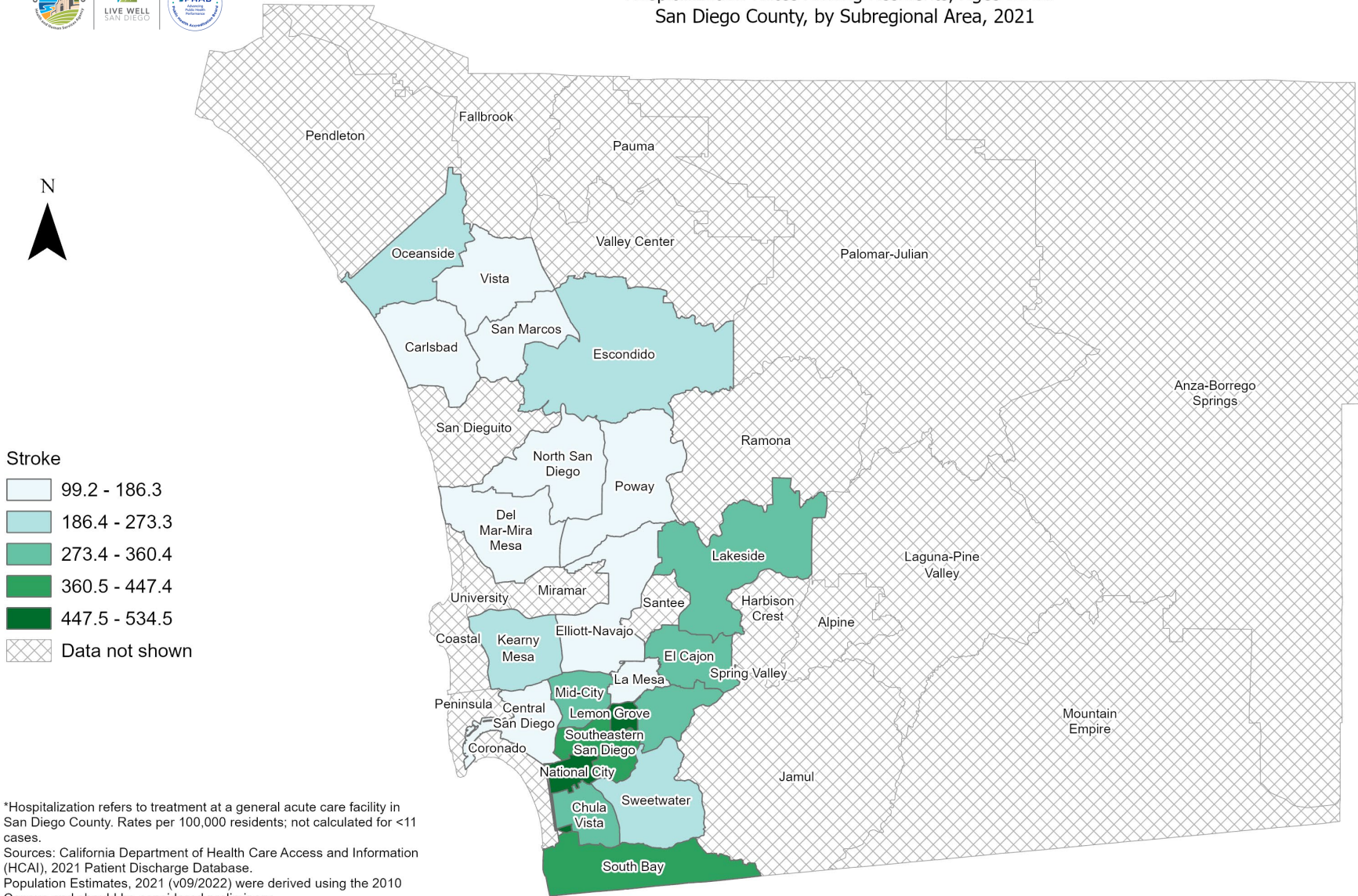
*Hospitalization refers to treatment at a general acute care facility in San Diego County. Rates per 100,000 residents; not calculated for <11 cases.
Sources: California Department of Health Care Access and Information (HCAI), 2021 Patient Discharge Database.
Population Estimates, 2021 (v09/2022) were derived using the 2010 Census and should be considered preliminary.

Maps & Analysis by County of San Diego, Health and Human Services Agency, Public Health Services, Community Health Statistics Unit.
Contact 619.692.6672. https://www.sandiegocounty.gov/hhsa/programs/phs/community_health_statistics/.
August, 2023.
LiveWellSD.org.





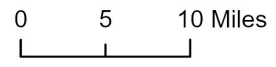
Hospitalization Rates Among Residents, Ages 50-59* San Diego County, by Subregional Area, 2021



- Stroke**
- 99.2 - 186.3
 - 186.4 - 273.3
 - 273.4 - 360.4
 - 360.5 - 447.4
 - 447.5 - 534.5
 - Data not shown

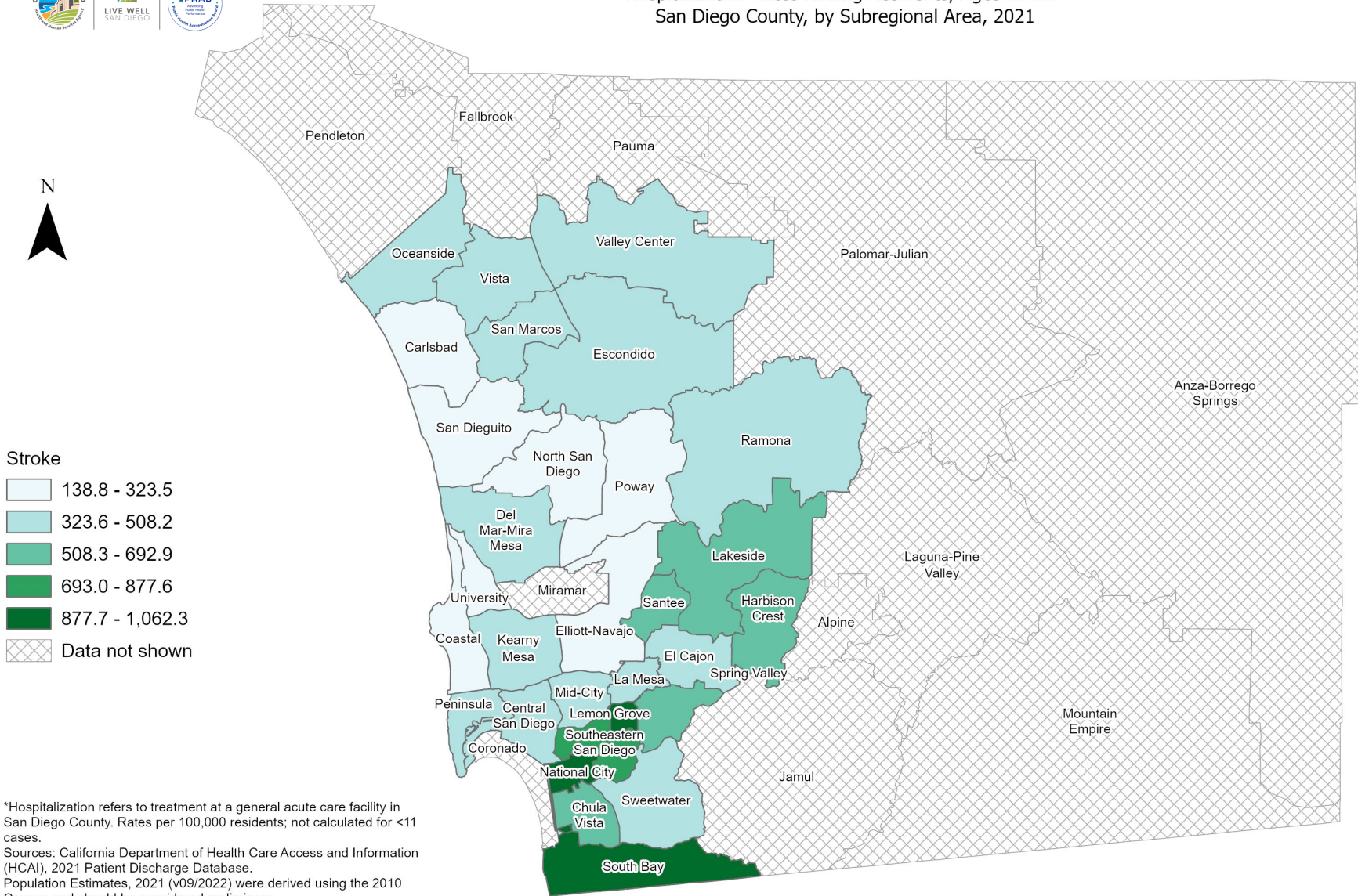
*Hospitalization refers to treatment at a general acute care facility in San Diego County. Rates per 100,000 residents; not calculated for <11 cases.
 Sources: California Department of Health Care Access and Information (HCAI), 2021 Patient Discharge Database.
 Population Estimates, 2021 (v09/2022) were derived using the 2010 Census and should be considered preliminary.

Maps & Analysis by County of San Diego, Health and Human Services Agency, Public Health Services, Community Health Statistics Unit.
 Contact 619.692.6672. https://www.sandiegocounty.gov/hhsa/programs/phs/community_health_statistics/.
 August, 2023.
 LiveWellSD.org.



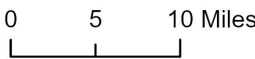


Hospitalization Rates Among Residents, Ages 60-69* San Diego County, by Subregional Area, 2021



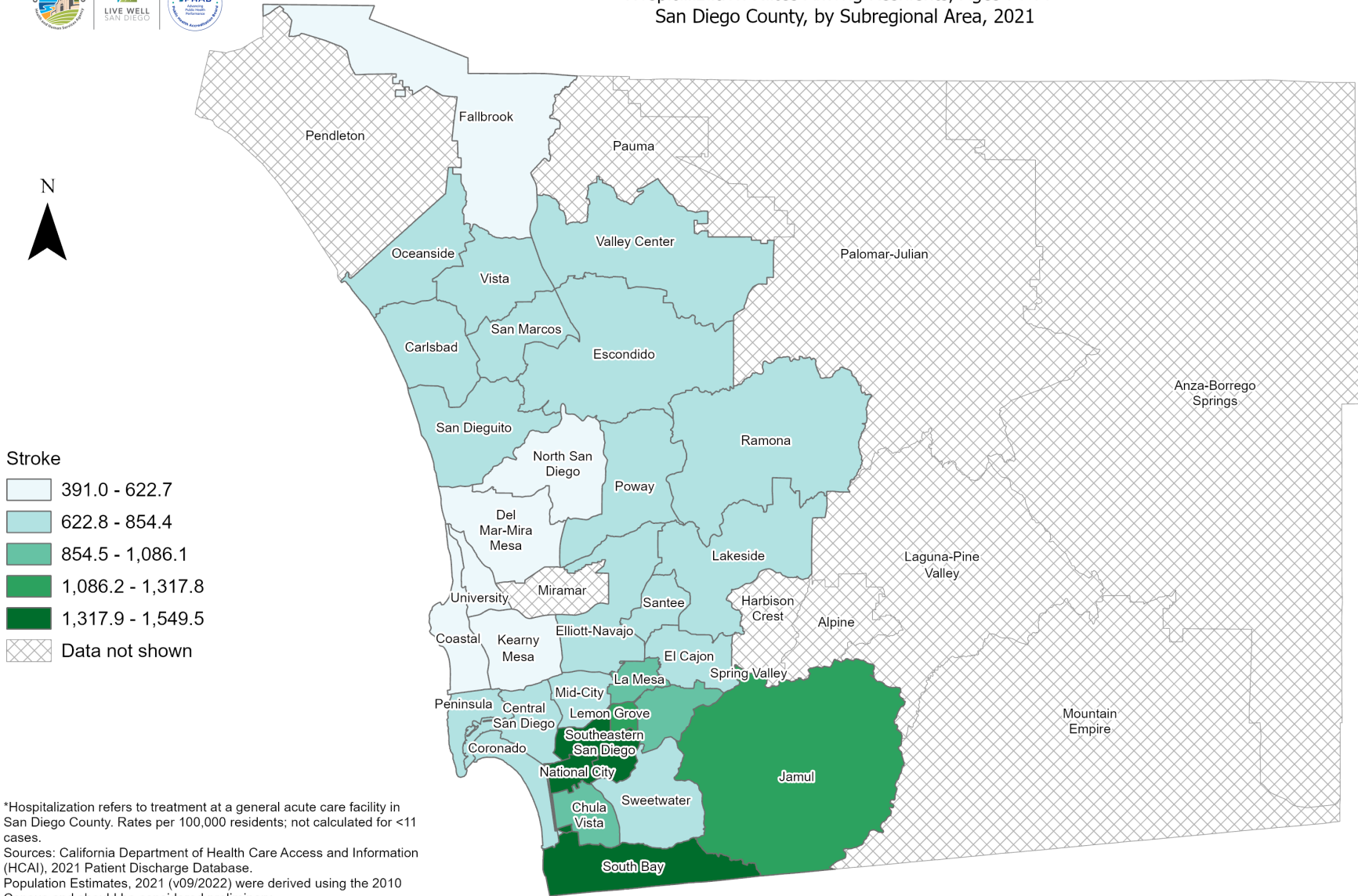
*Hospitalization refers to treatment at a general acute care facility in San Diego County. Rates per 100,000 residents; not calculated for <11 cases.
Sources: California Department of Health Care Access and Information (HCAI), 2021 Patient Discharge Database, Population Estimates, 2021 (v09/2022) were derived using the 2010 Census and should be considered preliminary.

Maps & Analysis by County of San Diego, Health and Human Services Agency, Public Health Services, Community Health Statistics Unit. Contact 619.692.6672. https://www.sandiegocounty.gov/hhsa/programs/phs/community_health_statistics/. August, 2023. LiveWellSD.org.





Hospitalization Rates Among Residents, Ages 70-79* San Diego County, by Subregional Area, 2021



Stroke

- 391.0 - 622.7
- 622.8 - 854.4
- 854.5 - 1,086.1
- 1,086.2 - 1,317.8
- 1,317.9 - 1,549.5
- Data not shown

*Hospitalization refers to treatment at a general acute care facility in San Diego County. Rates per 100,000 residents; not calculated for <11 cases.
Sources: California Department of Health Care Access and Information (HCAI), 2021 Patient Discharge Database, Population Estimates, 2021 (v09/2022) were derived using the 2010 Census and should be considered preliminary.

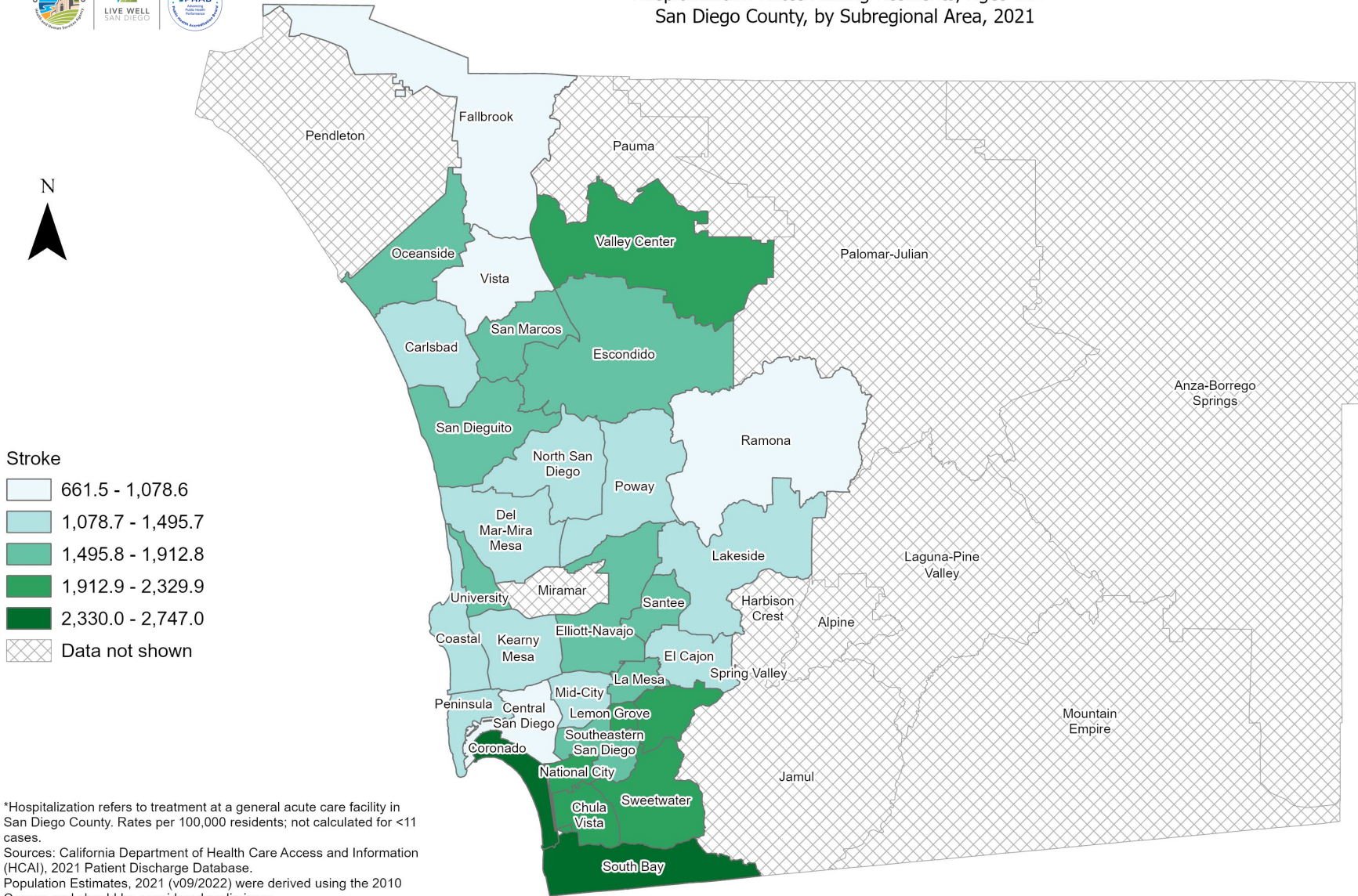
Maps & Analysis by County of San Diego, Health and Human Services Agency, Public Health Services, Community Health Statistics Unit. Contact 619.692.6672. https://www.sandiegocounty.gov/hhsa/programs/phs/community_health_statistics/. August, 2023. LiveWellSD.org.

0 5 10 Miles





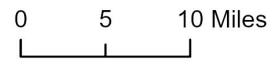
Hospitalization Rates Among Residents, Ages 80+* San Diego County, by Subregional Area, 2021



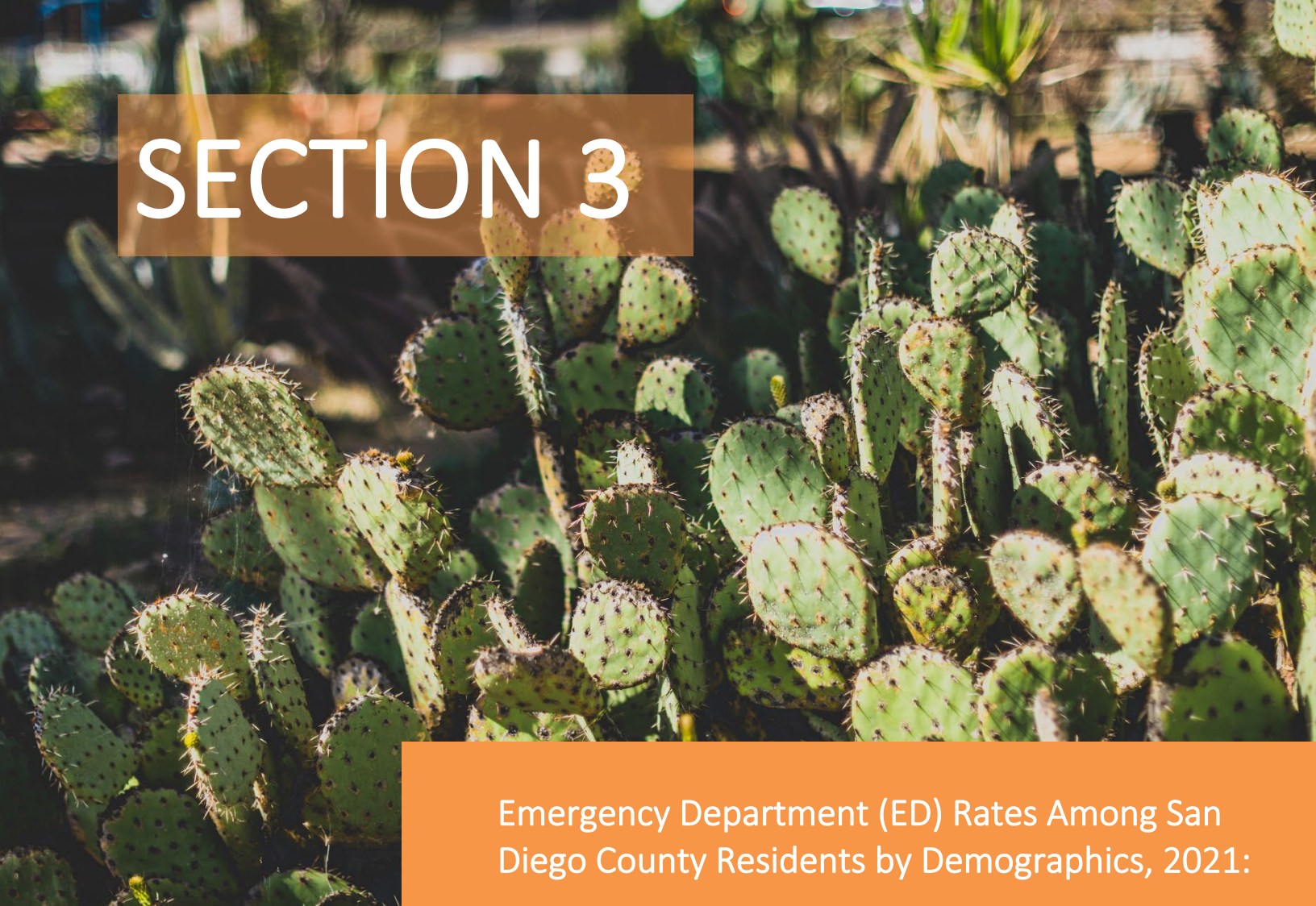
- Stroke**
- 661.5 - 1,078.6
 - 1,078.7 - 1,495.7
 - 1,495.8 - 1,912.8
 - 1,912.9 - 2,329.9
 - 2,330.0 - 2,747.0
 - Data not shown

*Hospitalization refers to treatment at a general acute care facility in San Diego County. Rates per 100,000 residents; not calculated for <11 cases.
 Sources: California Department of Health Care Access and Information (HCAI), 2021 Patient Discharge Database.
 Population Estimates, 2021 (v09/2022) were derived using the 2010 Census and should be considered preliminary.

Maps & Analysis by County of San Diego, Health and Human Services Agency, Public Health Services, Community Health Statistics Unit.
 Contact 619.692.6672. https://www.sandiegocounty.gov/hhsa/programs/phs/community_health_statistics/.
 August, 2023.
 LiveWellSD.org.



SECTION 3



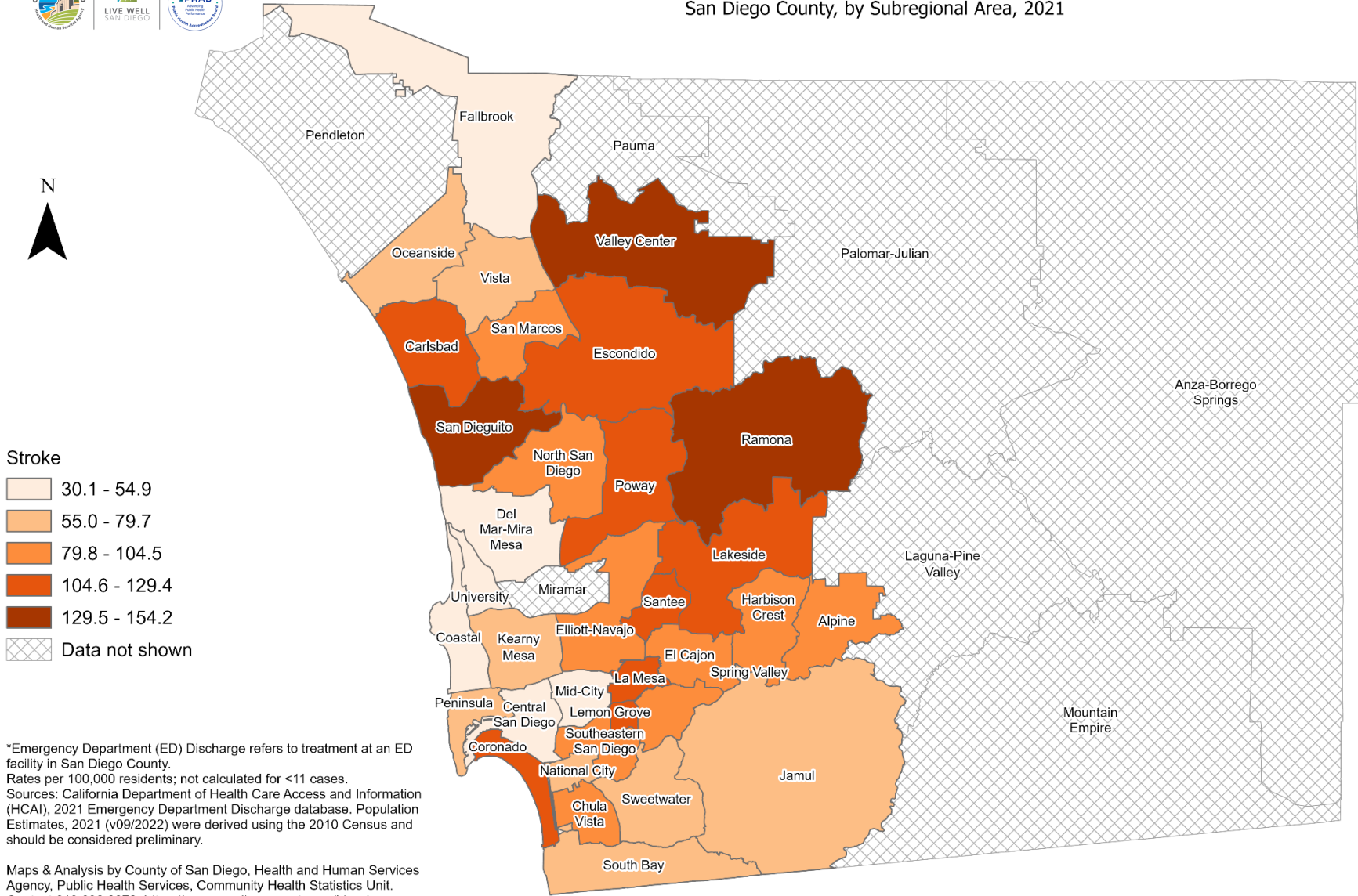
Emergency Department (ED) Rates Among San Diego County Residents by Demographics, 2021:

- Total Rate
 - Race/Ethnicity
 - Asian/Pacific Islander (API)
 - Black
 - Hispanic
 - White
 - Age Group
 - 0-9 Years
 - 10-19 Years
 - 20-29 Years
 - 30-39 Years
 - 40-49 Years
 - 50-59 Years
 - 60-69 Years
 - 70-79 Years
 - 80+ Years





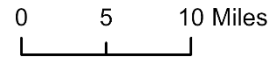
Total Emergency Department Discharge Rates* San Diego County, by Subregional Area, 2021



- Stroke**
- 30.1 - 54.9
 - 55.0 - 79.7
 - 79.8 - 104.5
 - 104.6 - 129.4
 - 129.5 - 154.2
 - Data not shown

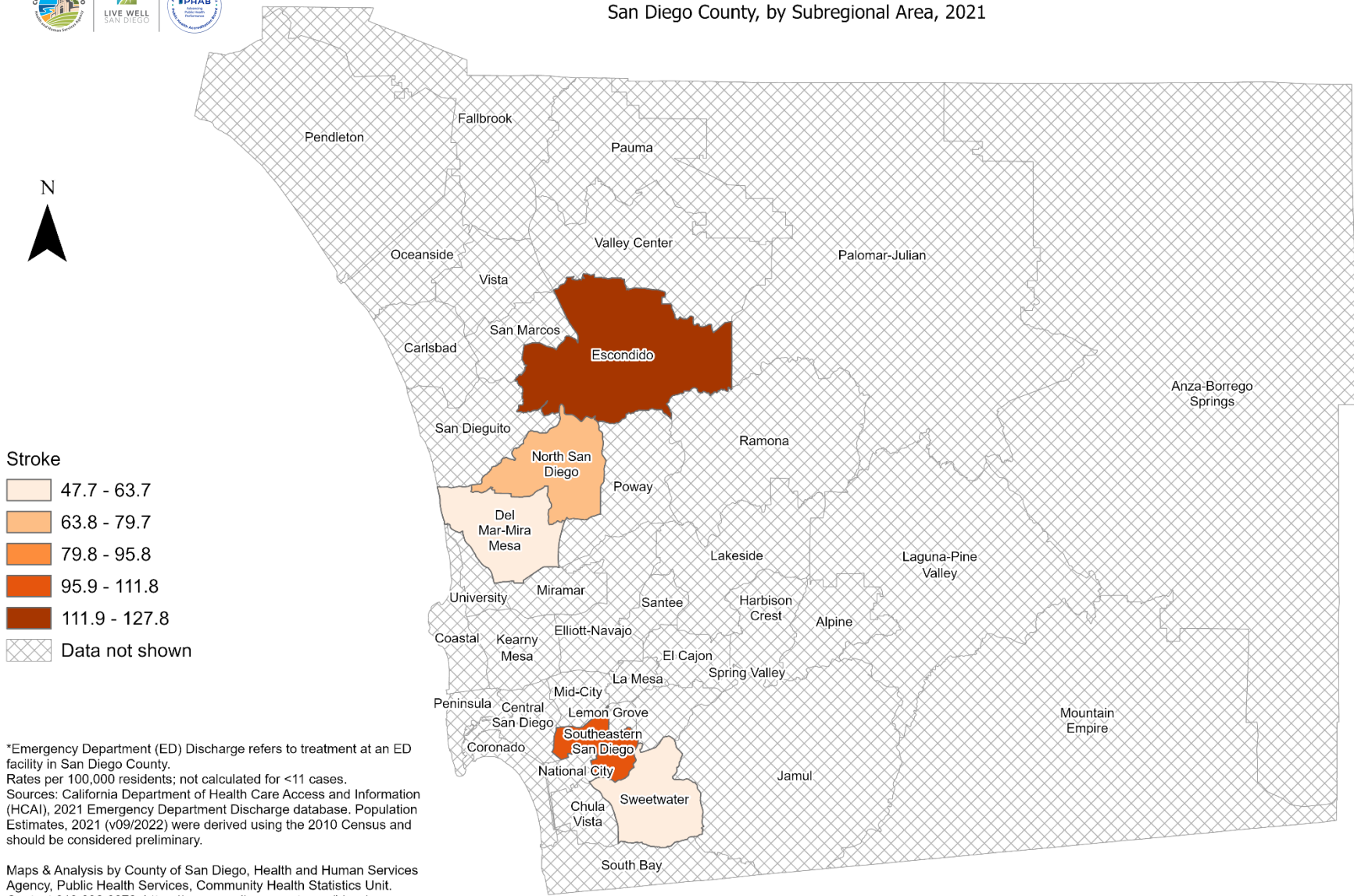
*Emergency Department (ED) Discharge refers to treatment at an ED facility in San Diego County.
 Rates per 100,000 residents; not calculated for <11 cases.
 Sources: California Department of Health Care Access and Information (HCAI), 2021 Emergency Department Discharge database. Population Estimates, 2021 (v09/2022) were derived using the 2010 Census and should be considered preliminary.

Maps & Analysis by County of San Diego, Health and Human Services Agency, Public Health Services, Community Health Statistics Unit.
 Contact 619.692.6672. https://www.sandiegocounty.gov/hhsa/programs/phs/community_health_statistics/.
 August, 2023.
 LiveWellSD.org.



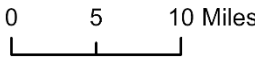


Emergency Department Discharge Rates Among Asian/Pacific Islander Residents* San Diego County, by Subregional Area, 2021



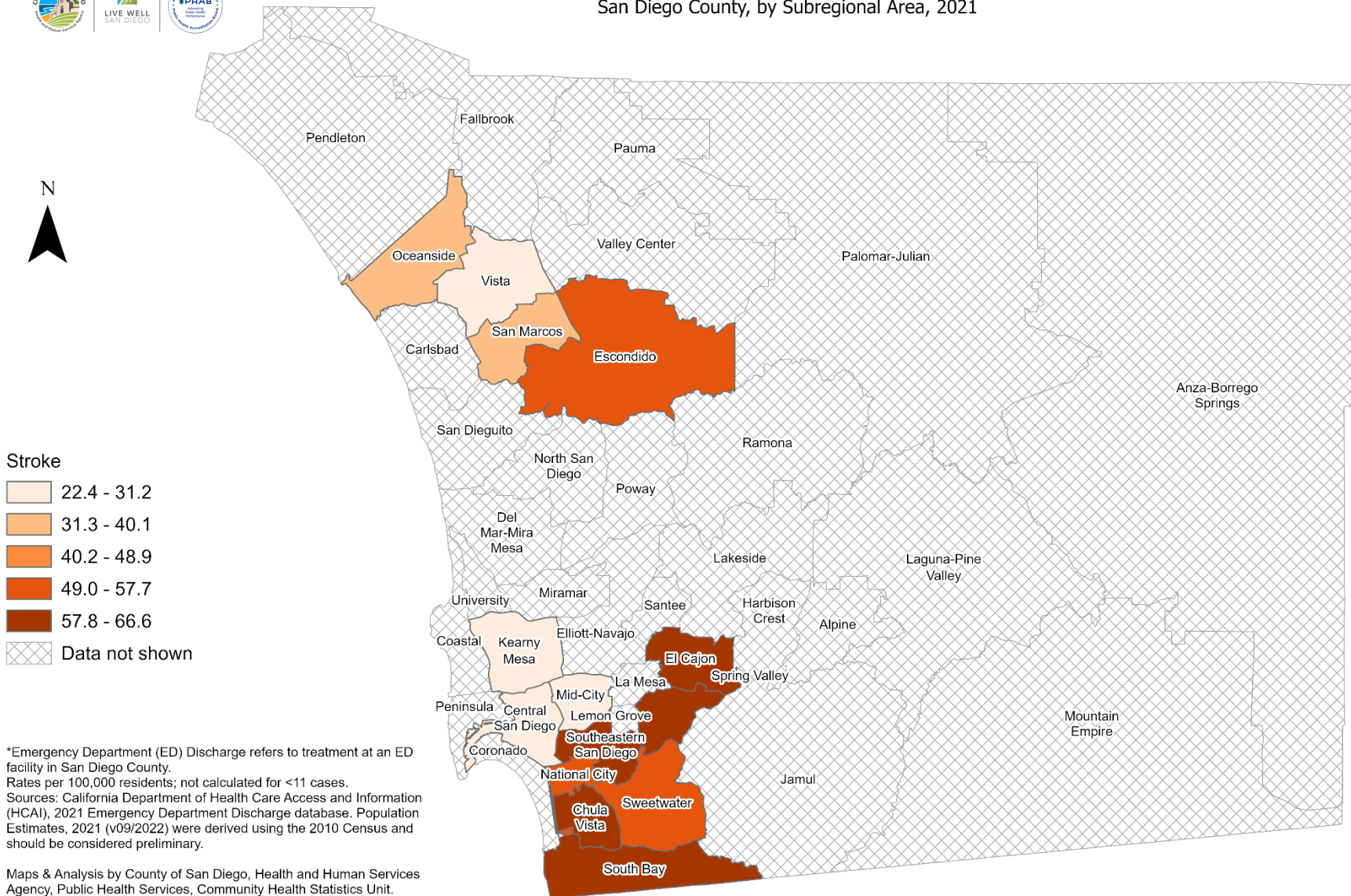
*Emergency Department (ED) Discharge refers to treatment at an ED facility in San Diego County.
Rates per 100,000 residents; not calculated for <11 cases.
Sources: California Department of Health Care Access and Information (HCAI), 2021 Emergency Department Discharge database. Population Estimates, 2021 (v09/2022) were derived using the 2010 Census and should be considered preliminary.

Maps & Analysis by County of San Diego, Health and Human Services Agency, Public Health Services, Community Health Statistics Unit.
Contact 619.692.6672. https://www.sandiegocounty.gov/hhsa/programs/phs/community_health_statistics/.
August, 2023.
LiveWellSD.org.





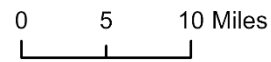
Emergency Department Discharge Rates Among Hispanic Residents* San Diego County, by Subregional Area, 2021



- Stroke**
- 22.4 - 31.2
 - 31.3 - 40.1
 - 40.2 - 48.9
 - 49.0 - 57.7
 - 57.8 - 66.6
 - Data not shown

*Emergency Department (ED) Discharge refers to treatment at an ED facility in San Diego County.
 Rates per 100,000 residents; not calculated for <11 cases.
 Sources: California Department of Health Care Access and Information (HCAI), 2021 Emergency Department Discharge database. Population Estimates, 2021 (v09/2022) were derived using the 2010 Census and should be considered preliminary.

Maps & Analysis by County of San Diego, Health and Human Services Agency, Public Health Services, Community Health Statistics Unit.
 Contact 619.692.6672. https://www.sandiegocounty.gov/hhsa/programs/phs/community_health_statistics/.
 August, 2023.
 LiveWellSD.org.









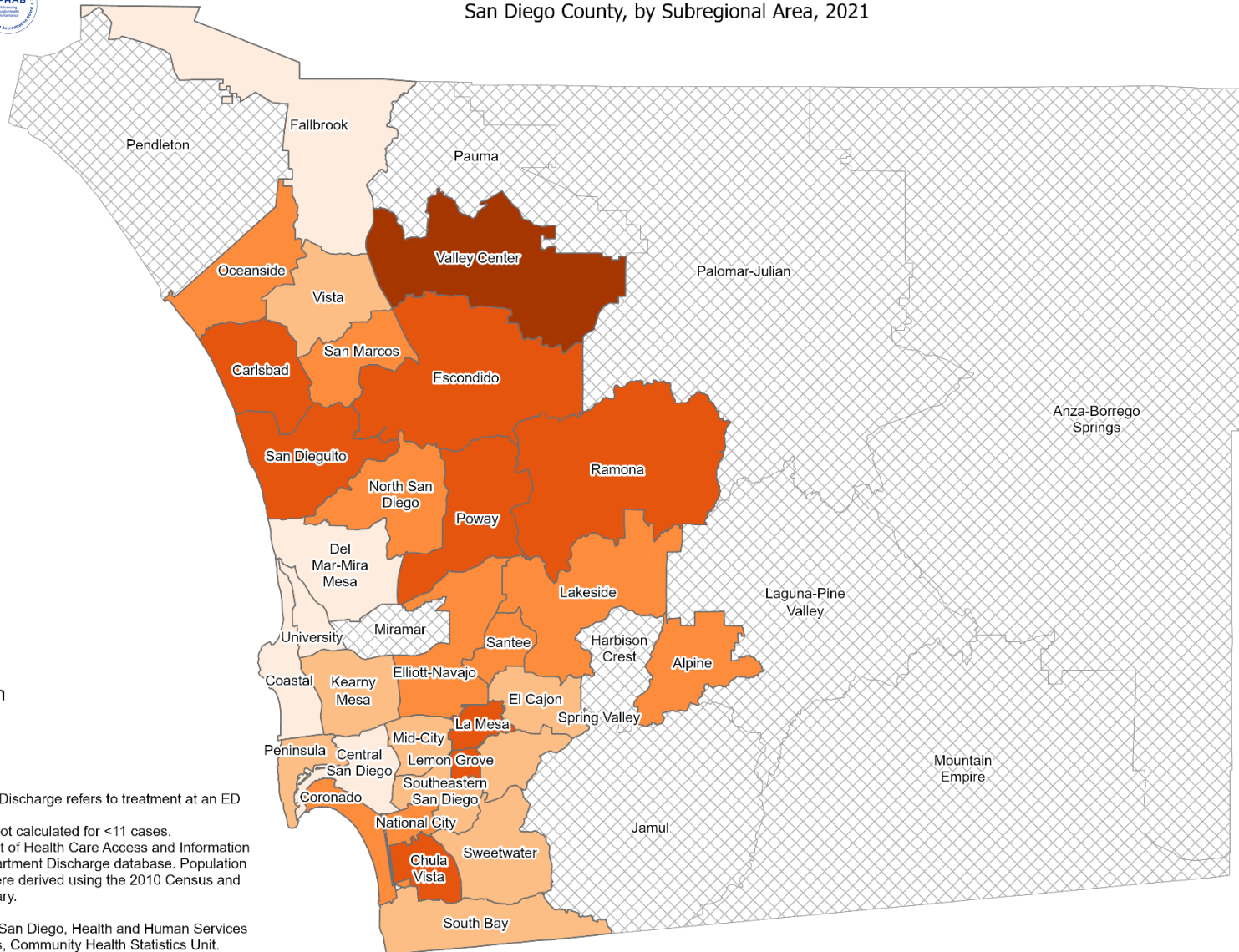


Emergency Department Discharge Rates Among White Residents* San Diego County, by Subregional Area, 2021



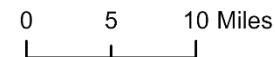
Stroke

-  34.2 - 72.1
-  72.2 - 110.0
-  110.1 - 148.0
-  148.1 - 185.9
-  186.0 - 223.8
-  Data not shown



*Emergency Department (ED) Discharge refers to treatment at an ED facility in San Diego County.
Rates per 100,000 residents; not calculated for <11 cases.
Sources: California Department of Health Care Access and Information (HCAI), 2021 Emergency Department Discharge database. Population Estimates, 2021 (v09/2022) were derived using the 2010 Census and should be considered preliminary.

Maps & Analysis by County of San Diego, Health and Human Services Agency, Public Health Services, Community Health Statistics Unit.
Contact 619.692.6672. https://www.sandiegocounty.gov/hhsa/programs/phs/community_health_statistics/.
August, 2023.
LiveWellSD.org.



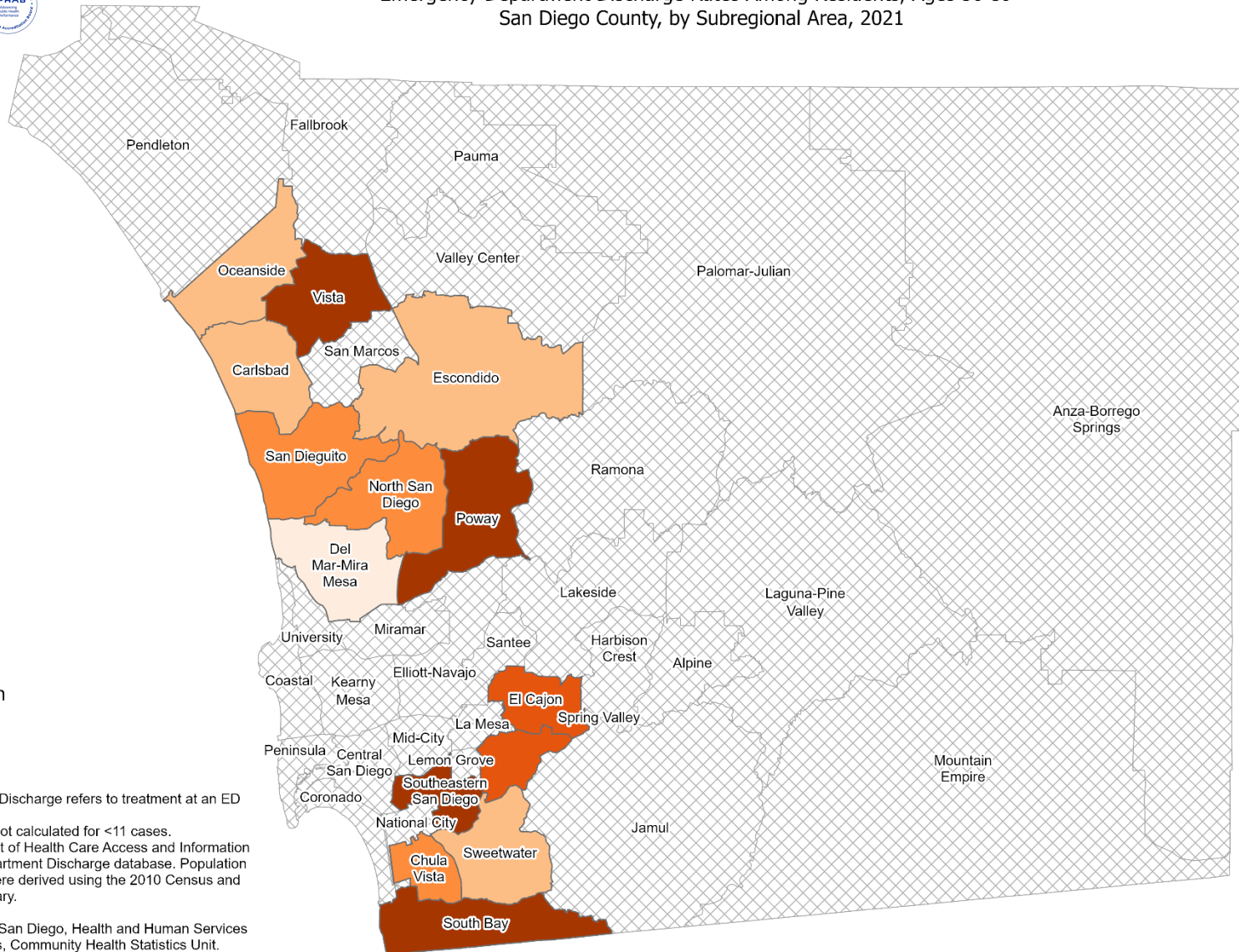


Emergency Department Discharge Rates Among Residents, Ages 50-59* San Diego County, by Subregional Area, 2021



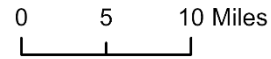
Stroke

- 59.7 - 74.6
- 74.7 - 89.6
- 89.7 - 104.5
- 104.6 - 119.4
- 119.5 - 134.4
- Data not shown



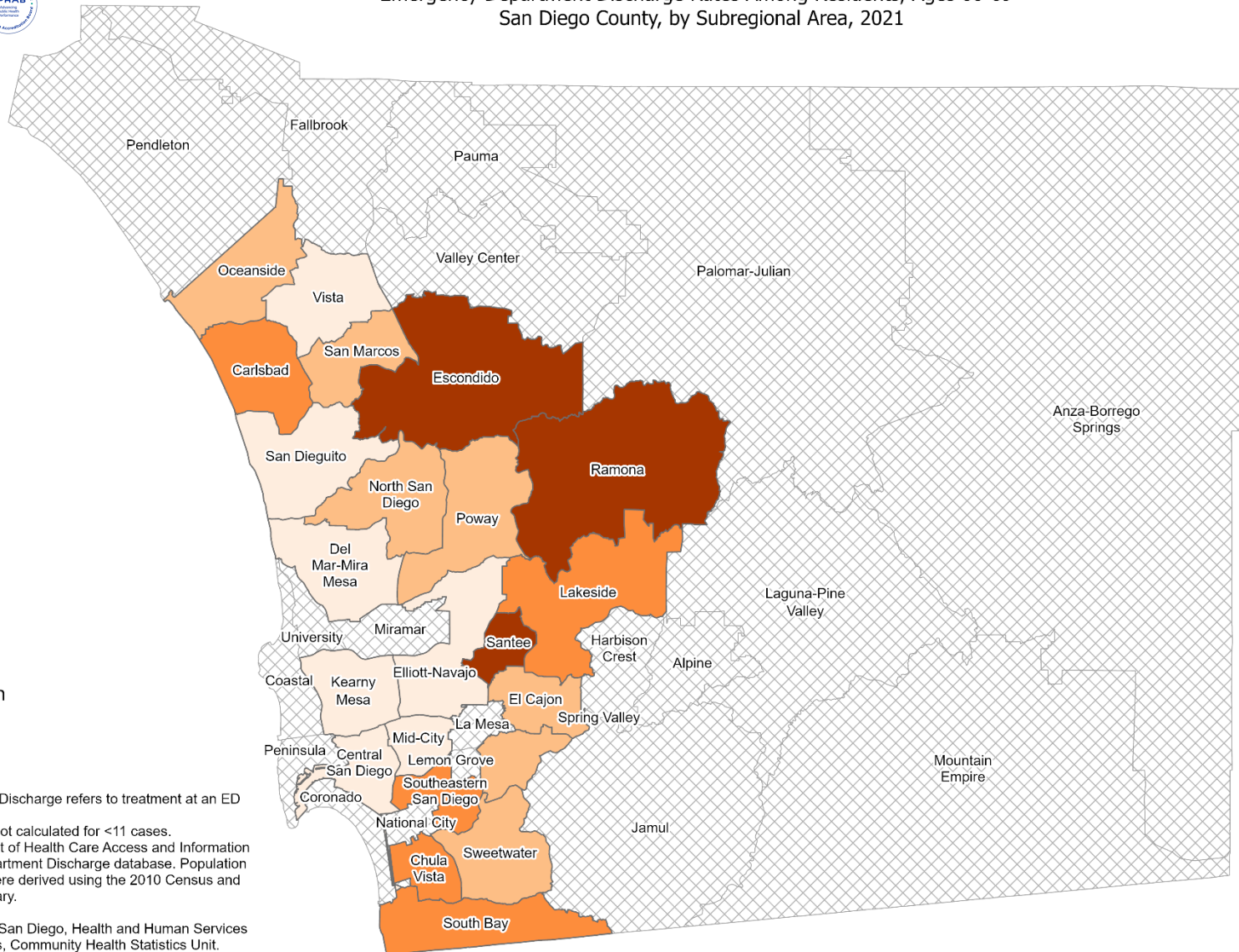
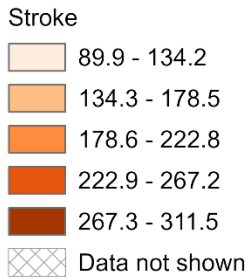
*Emergency Department (ED) Discharge refers to treatment at an ED facility in San Diego County.
Rates per 100,000 residents; not calculated for <11 cases.
Sources: California Department of Health Care Access and Information (HCAI), 2021 Emergency Department Discharge database. Population Estimates, 2021 (v09/2022) were derived using the 2010 Census and should be considered preliminary.

Maps & Analysis by County of San Diego, Health and Human Services Agency, Public Health Services, Community Health Statistics Unit.
Contact 619.692.6672. https://www.sandiegocounty.gov/hhsa/programs/phs/community_health_statistics/.
August, 2023.
LiveWellSD.org.





Emergency Department Discharge Rates Among Residents, Ages 60-69* San Diego County, by Subregional Area, 2021



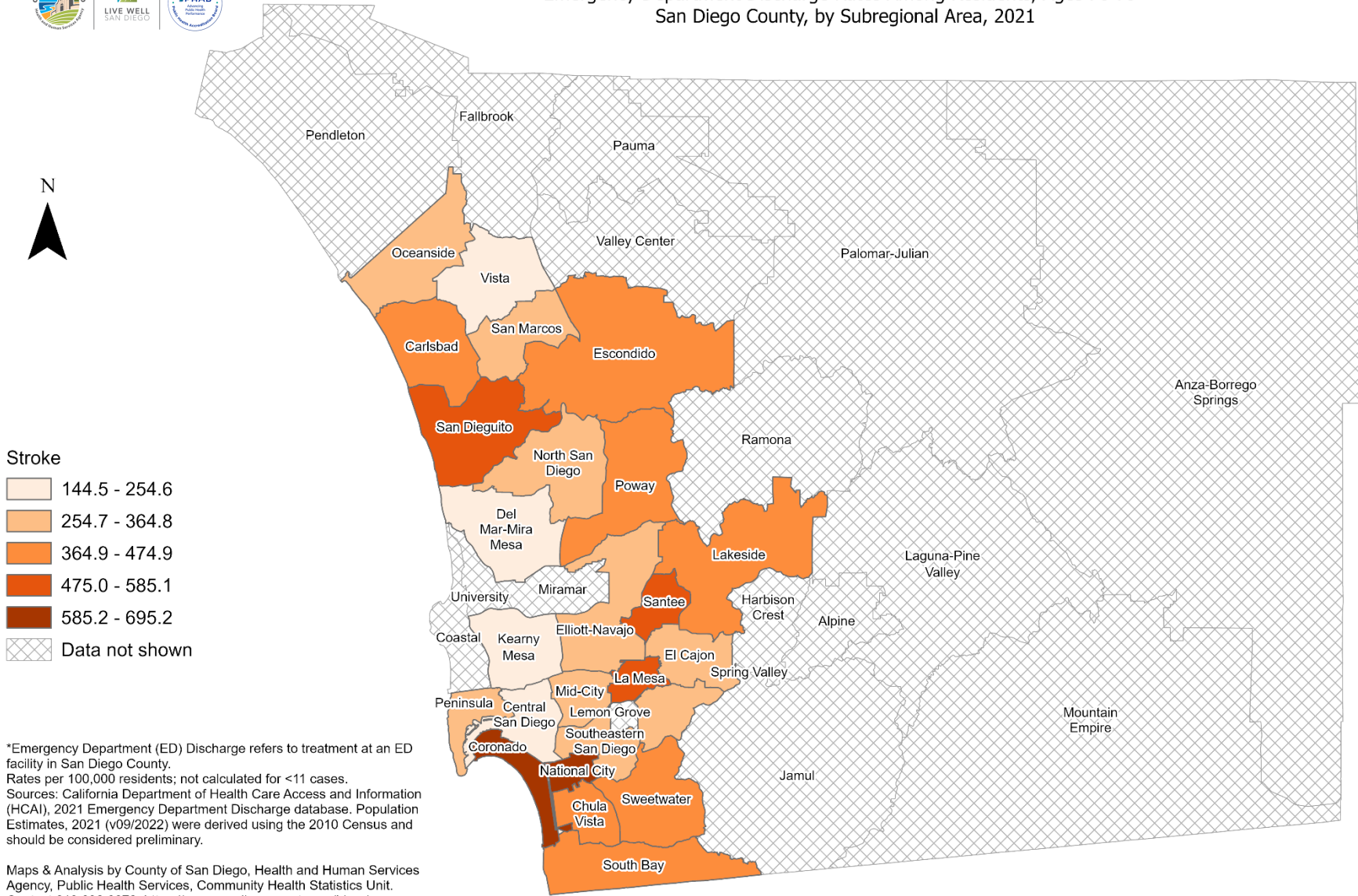
*Emergency Department (ED) Discharge refers to treatment at an ED facility in San Diego County.
Rates per 100,000 residents; not calculated for <11 cases.
Sources: California Department of Health Care Access and Information (HCAI), 2021 Emergency Department Discharge database. Population Estimates, 2021 (v09/2022) were derived using the 2010 Census and should be considered preliminary.

Maps & Analysis by County of San Diego, Health and Human Services Agency, Public Health Services, Community Health Statistics Unit.
Contact 619.692.6672. https://www.sandiegocounty.gov/hhsa/programs/phs/community_health_statistics/.
August, 2023.
LiveWellSD.org.





Emergency Department Discharge Rates Among Residents, Ages 70-79* San Diego County, by Subregional Area, 2021

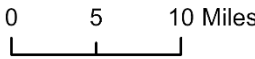


Stroke

- 144.5 - 254.6
- 254.7 - 364.8
- 364.9 - 474.9
- 475.0 - 585.1
- 585.2 - 695.2
- Data not shown

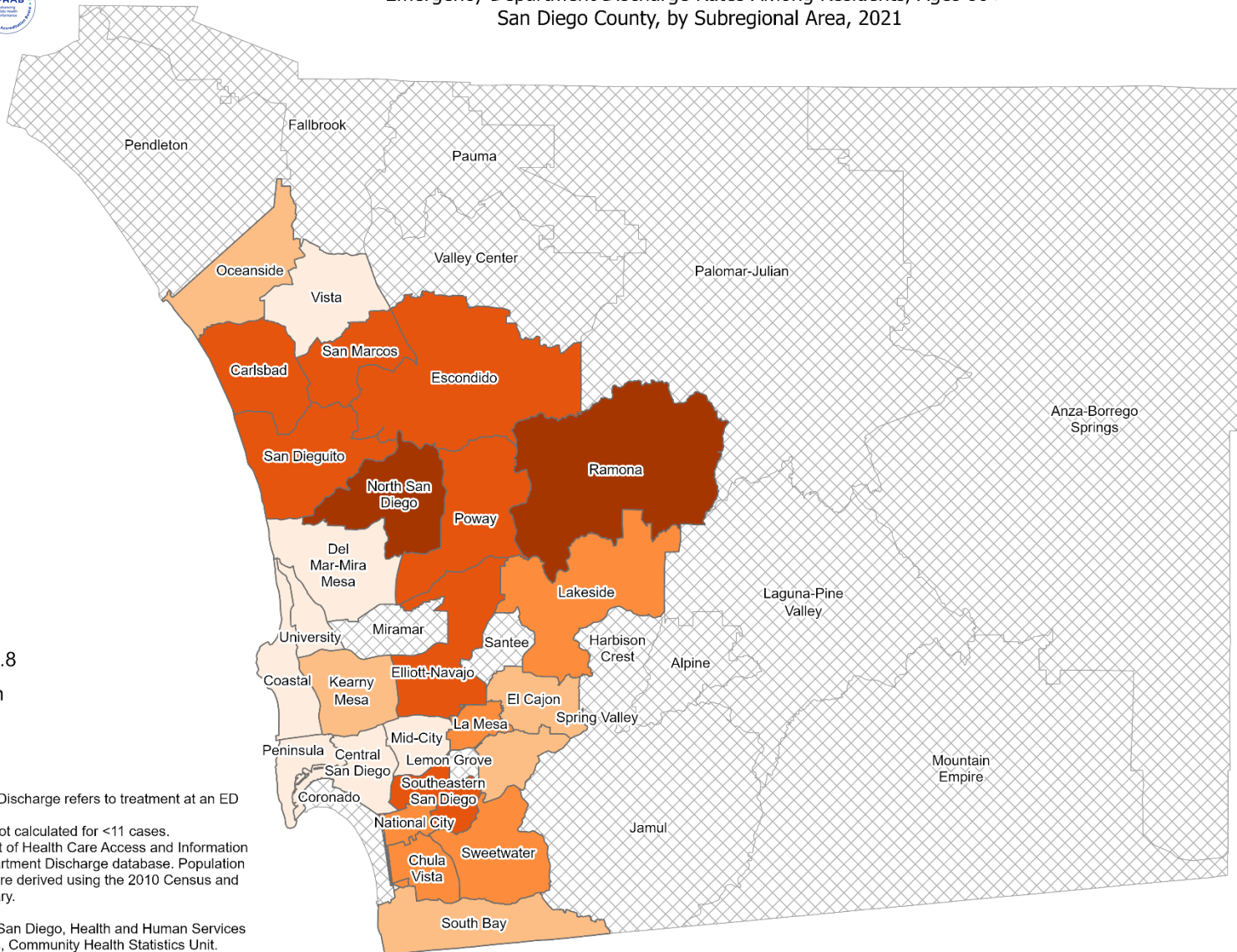
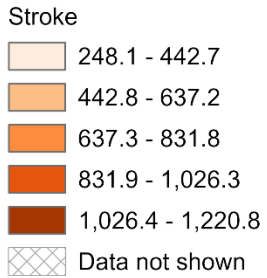
*Emergency Department (ED) Discharge refers to treatment at an ED facility in San Diego County. Rates per 100,000 residents; not calculated for <11 cases. Sources: California Department of Health Care Access and Information (HCAI), 2021 Emergency Department Discharge database. Population Estimates, 2021 (v09/2022) were derived using the 2010 Census and should be considered preliminary.

Maps & Analysis by County of San Diego, Health and Human Services Agency, Public Health Services, Community Health Statistics Unit. Contact 619.692.6672. https://www.sandiegocounty.gov/hhsa/programs/phs/community_health_statistics/. August, 2023. LiveWellSD.org.



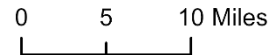


Emergency Department Discharge Rates Among Residents, Ages 80+* San Diego County, by Subregional Area, 2021



*Emergency Department (ED) Discharge refers to treatment at an ED facility in San Diego County.
 Rates per 100,000 residents; not calculated for <11 cases.
 Sources: California Department of Health Care Access and Information (HCAI), 2021 Emergency Department Discharge database. Population Estimates, 2021 (v09/2022) were derived using the 2010 Census and should be considered preliminary.

Maps & Analysis by County of San Diego, Health and Human Services Agency, Public Health Services, Community Health Statistics Unit.
 Contact 619.692.6672. https://www.sandiegocounty.gov/hhsa/programs/phs/community_health_statistics/.
 August, 2023.
 LiveWellSD.org.



SECTION 4



In-Patient Treatment (IPT) Rates Among San Diego County Residents by Demographics, 2021:

- Total Rate
 - Race/Ethnicity
 - Asian/Pacific Islander (API)
 - Black
 - Hispanic
 - White
 - Age Group
 - 0-9 Years
 - 10-19 Years
 - 20-29 Years
 - 30-39 Years
 - 40-49 Years
 - 50-59 Years
 - 60-69 Years
 - 70-79 Years
 - 80+ Years

-
-
-
-
-

**No SRA-level rate data
available for this section.**