



LIVE WELL
SAN DIEGO

San Diego County Annual 2023-24 Respiratory Virus Surveillance Report

Prepared by Epidemiology and Immunization Services Branch

www.sdepi.org

October 24, 2024

COVID-19

Cases

48,876

Deaths

362

Outbreaks*

488

7/2/2023 – 6/29/2024

Influenza

Cases

19,035

Deaths

63

Outbreaks*

32

7/2/2023 – 6/29/2024

RSV

Cases

5,918

Deaths

24

Outbreaks*

10

7/2/2023 – 6/29/2024

*In residential congregate settings

Report Content Links

- Page 2: [COVID-19, Influenza, and RSV Fiscal Year Overview](#)
- Page 3: [COVID-19, Influenza, and RSV Cases by Episode Week, Fiscal Year](#)
- Page 4: [Cumulative COVID-19, Influenza, and RSV Cases](#)
- Page 5: [COVID-19 and Influenza Hospital and ICU Census](#)
- Page 6: [Emergency Department Data: Respiratory Symptoms](#)
- Page 7: [Proportion of Cases by Age Group and Episode Month, Fiscal Year](#)
- Page 8: [Proportion of Cases by Age Group and Fiscal Year](#)
- Page 9: [COVID-19, Influenza, and RSV Positivity and Outbreaks](#)
- Page 10: [COVID-19, Influenza, and RSV Deaths by Age and Fiscal Year](#)
- Page 11: [Summary of Deaths, Fiscal Year](#)
- Page 12: [Vaccinations Administered](#)
- Page 13: [Vaccine Recipients by Age](#)
- Page 14: [Wastewater Surveillance](#)
- Page 15: [Influenza Subtypes](#)
- Page 16: [COVID-19 Surveillance on Variants](#)

Data are preliminary and may change due to delayed reporting and additional information obtained during investigations.

Most data in this report are presented by fiscal year, which runs July 1–June 30. Because data are also presented by CDC disease week, which runs Sunday–Saturday, we start the data for 2023-24 on July 2, 2023.

The purpose of the **Respiratory Virus Surveillance Report** is to summarize current COVID-19, RSV, and influenza surveillance in San Diego County. Additional information on COVID-19, RSV, and influenza reporting, resources, data sources, and definitions can be found in the [Supplemental Information](#) document. A link to subscribe to this report is available via the Epidemiology Unit [website](#).

Visit the Respiratory Viruses Data and Reports [website](#) and the COVID-19 in San Diego County [website](#) to see additional data.

Epidemiology and Immunization Services Branch

www.sdepi.org (619) 692-8499



Respiratory Virus Surveillance Report

Data through 6/29/2024



LIVE WELL
SAN DIEGO

COVID-19, Influenza, and RSV Fiscal Year Overview

Table 1. Respiratory Surveillance Indicators

| Indicator | 2023-24 Fiscal Year | | 2022-23 Fiscal Year | | Prior Years Average* |
|------------------------------|---------------------|--|---------------------|--|----------------------|
| CASES | | | | | |
| COVID-19 [†] | 48,876 | | 177,416 | | 352,298 |
| Influenza | 19,035 | | 21,711 | | 11,426 |
| RSV | 5,918 | | 5,885 | | 2,749 |
| DEATHS[‡] | | | | | |
| COVID-19 | 362 | | 632 | | 1,890 |
| Influenza | 63 | | 44 | | 48 |
| RSV | 24 | | 21 | | 8 |
| OUTBREAKS[§] | | | | | |
| COVID-19 | 488 | | 501 | | 515 |
| Influenza | 32 | | 25 | | 22 |
| RSV | 10 | | 2 | | 1 |

FY 2023-24 is 7/2/2023- 6/29/2024, Weeks 27-26. Previous weeks' case counts or percentages may change due to delayed processing or reporting.

*Includes FYs 2018-19, 2019-20, 2020-21, 2021-22, and 2022-23 for influenza and 2020-21, 2021-22, and 2022-23 for COVID-19 and RSV.

[†]Confirmed and probable COVID-19 cases.

[‡]Current FY deaths are shown by week of report; prior FY deaths are shown by week of death.

[§]See the [Supplemental Information](#) document for outbreak definitions. Includes only outbreaks occurring in skilled nursing facilities and other residential congregate settings.



Respiratory Virus Surveillance Report



COVID-19, Influenza, and RSV Cases by CDC Episode Week, * 2023-24 Fiscal Year

Figure 1.1. San Diego County **COVID-19** Confirmed and Probable Cases (N=48,876)

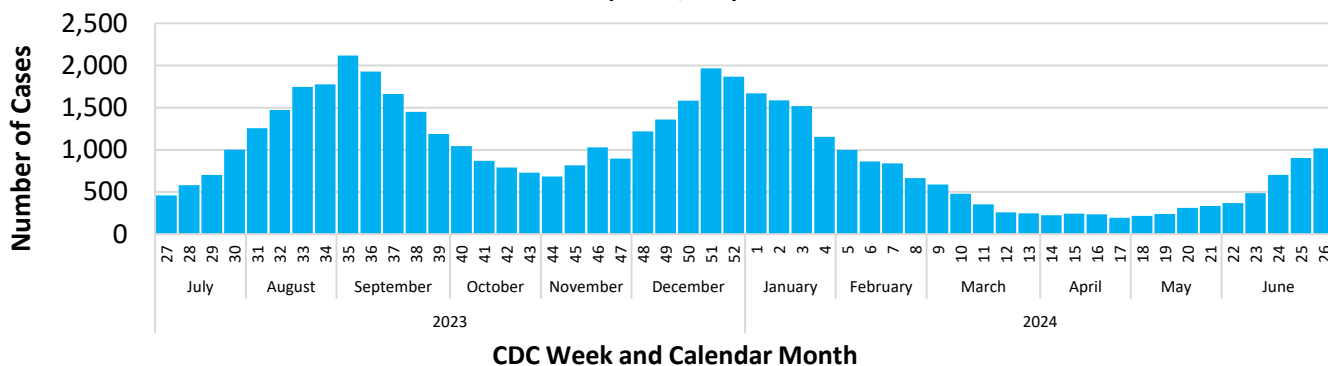


Figure 1.2. San Diego County **Influenza** Cases (N=19,035)

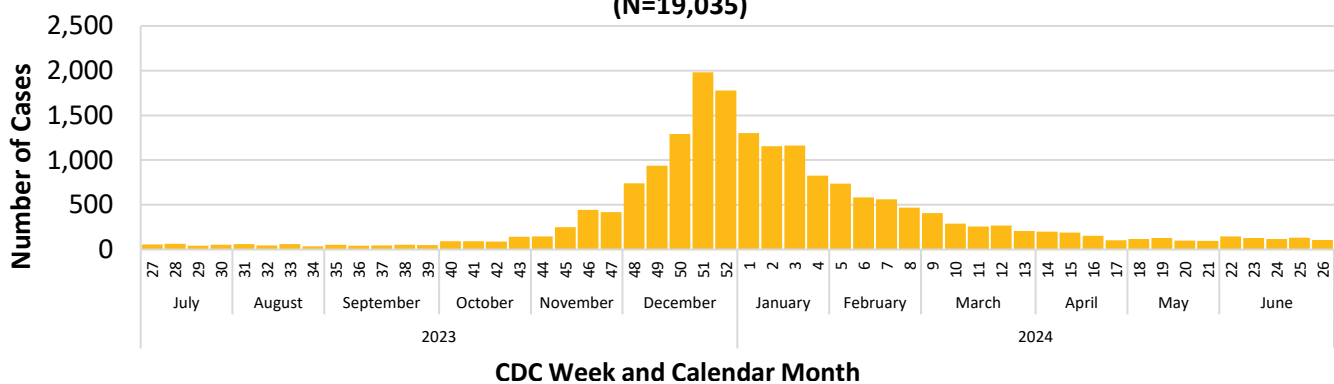
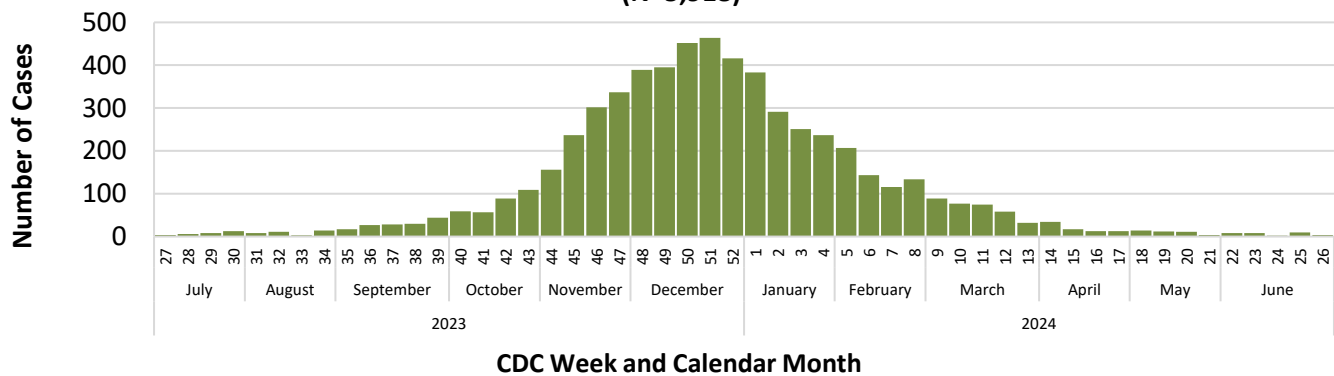


Figure 1.3. San Diego County **RSV** Cases (N=5,918)



*Episode date is the earliest available of symptom onset date, specimen collection date, date of death, date reported. Data for the most recent week may be incomplete.



Respiratory Virus Surveillance Report



Cumulative COVID-19, Influenza, and RSV Cases by CDC Episode Week* and Fiscal Year

— 2023-24 — 2022-23 — 2021-22 — 2020-21 — 2019-20

Figure 2.1. Cumulative COVID-19 Confirmed and Probable Cases

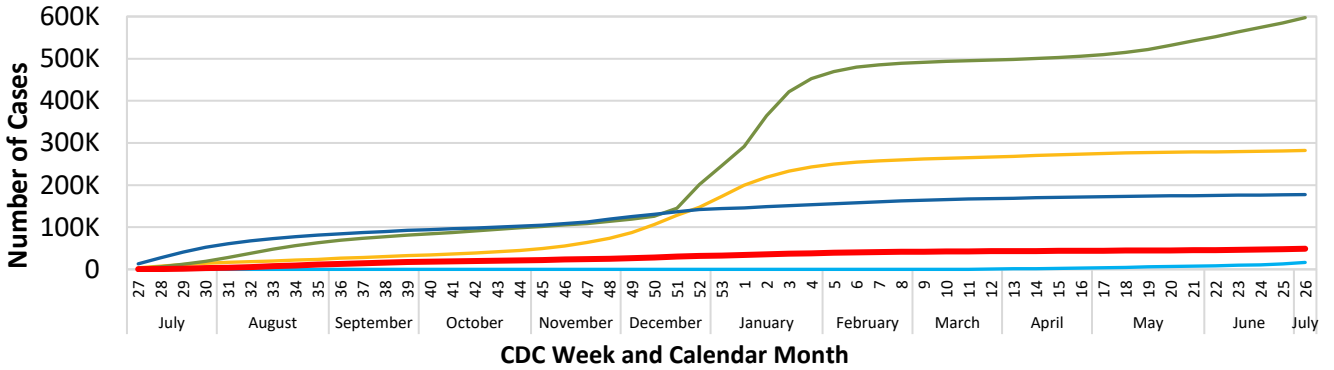


Figure 2.2. Cumulative Influenza Cases

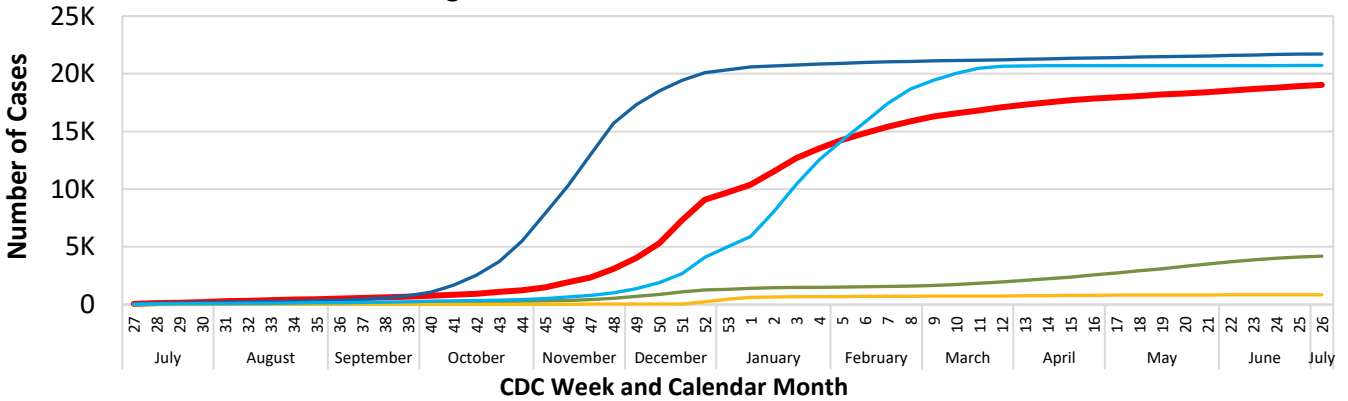
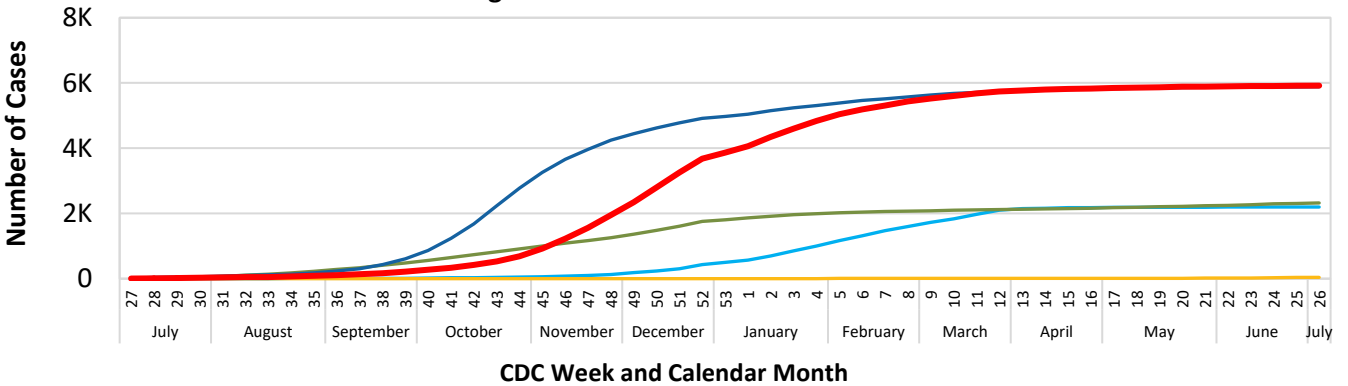


Figure 2.3. Cumulative RSV Cases



*Episode date is the earliest available of symptom onset date, specimen collection date, date of death, date reported. Data for the most recent week may be incomplete.

Data through
6/29/2024

Epidemiology and Immunization Services Branch
www.sdepi.org (619) 692-8499



Respiratory Virus Surveillance Report



COVID-19 and Influenza Hospital and ICU Census

Figure 3. COVID-19 and Influenza-Positive Hospitalized Patients, Weekly Average Census,* San Diego County

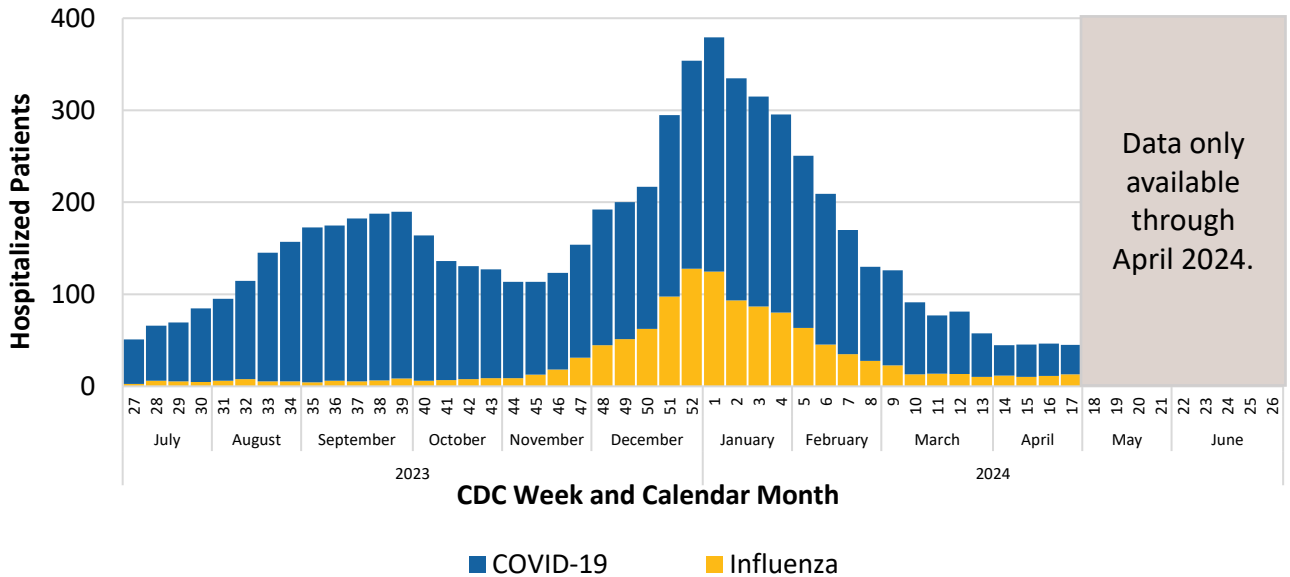
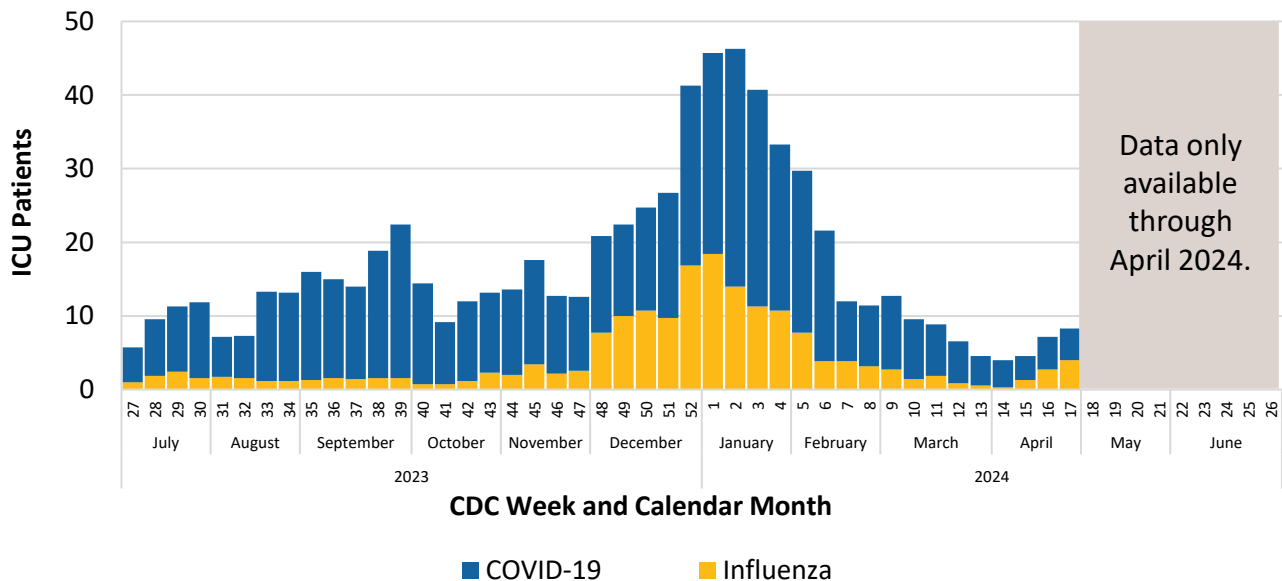


Figure 4. COVID-19 and Influenza-Positive ICU Patients, Weekly Average Census,* San Diego County



*Calculated by taking the 7-day daily average census for the week.



Respiratory Virus Surveillance Report



Emergency Department Data: Respiratory Symptoms

Figure 5. Percent of Emergency Department Visit Chief Complaints for ILI,[†] Respiratory Symptoms, or COVID-like Illness* by Week

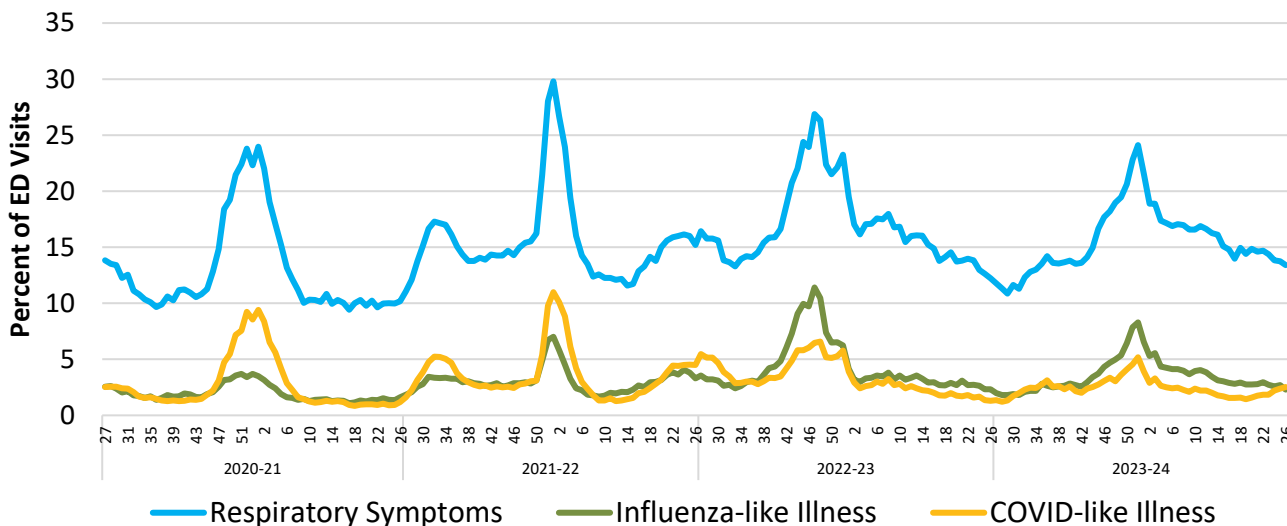
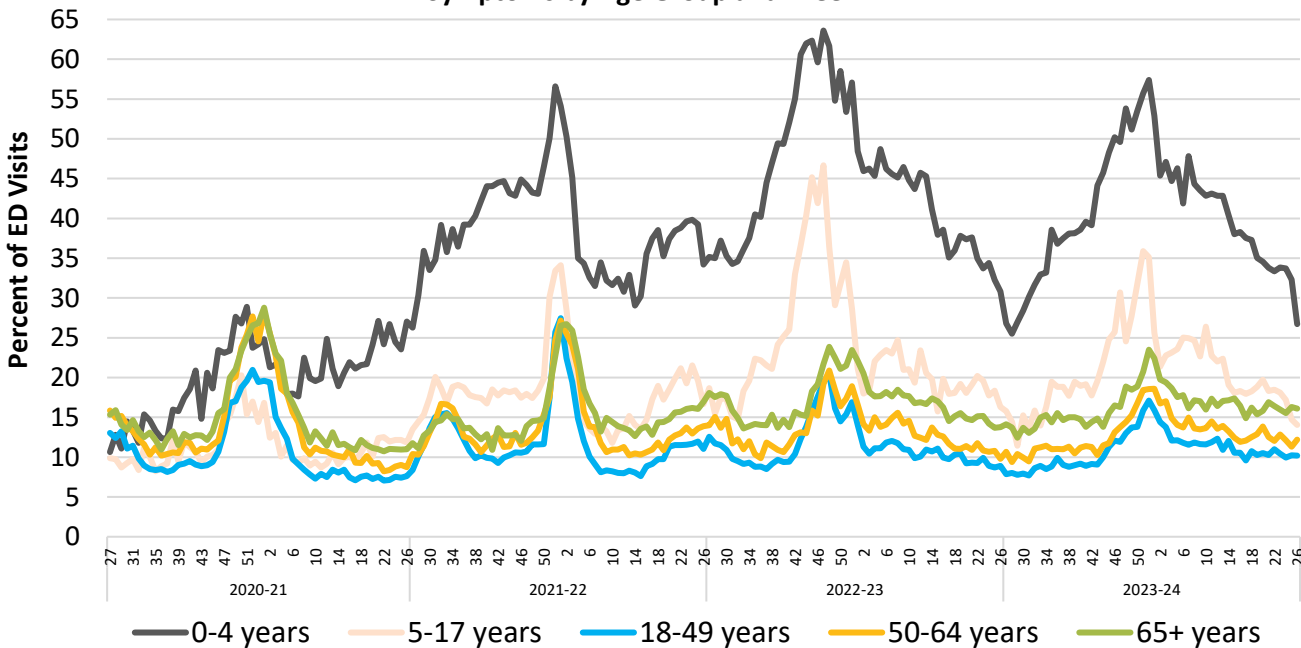


Figure 6. Percent of Emergency Department Visit Chief Complaints for Respiratory Symptoms by Age Group and Week



*COVID-like Illness (CLI) includes fever and cough, shortness of breath, or difficulty breathing OR coronavirus diagnostic codes.

[†]Influenza-like illness (ILI) includes fever plus cough and/or sore throat.

Data through
6/29/2024

Epidemiology and Immunization Services Branch

www.sdepi.org (619) 692-8499



Respiratory Virus Surveillance Report



Proportion of Cases by Age Group and Episode Month, 2023-24 Fiscal Year

■ 0-4 yrs ■ 5-17 yrs ■ 18-49 yrs ■ 50-64 yrs ■ 65+ yrs

Figure 7. Proportion of COVID-19 Cases

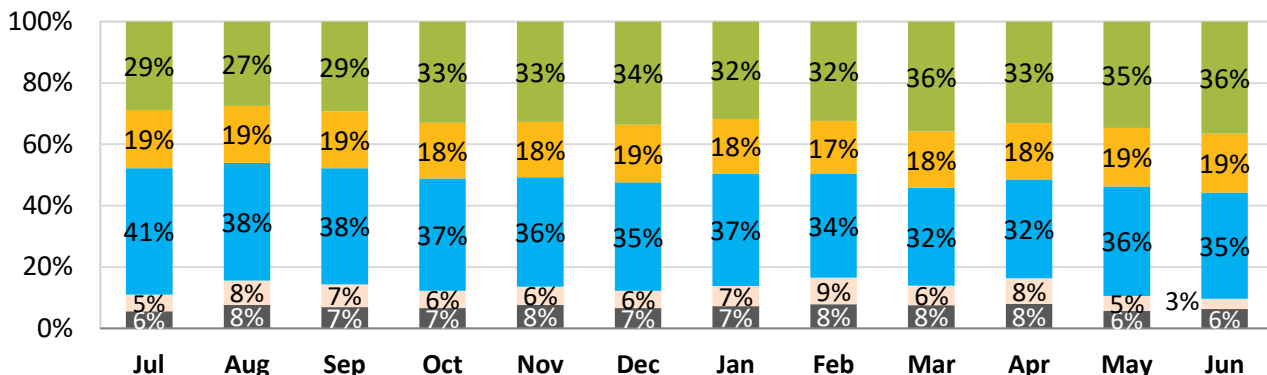


Figure 8. Proportion of Influenza Cases

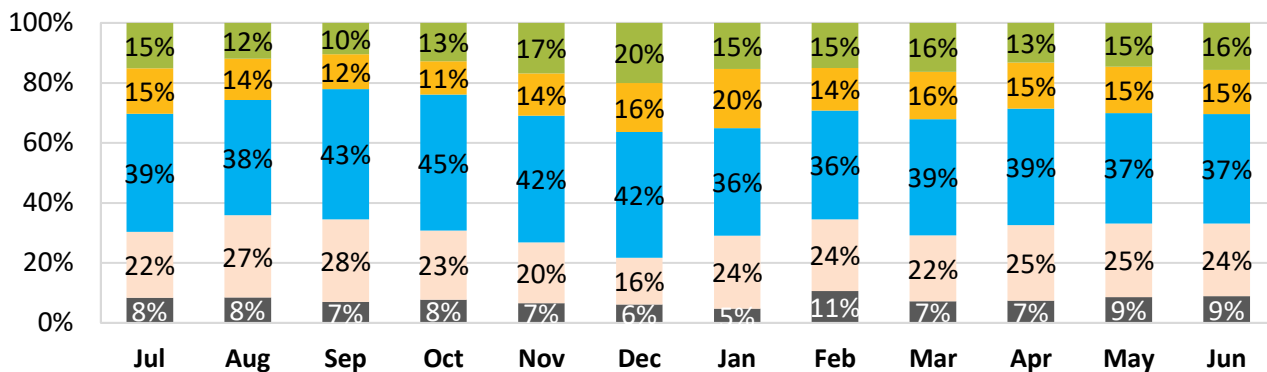
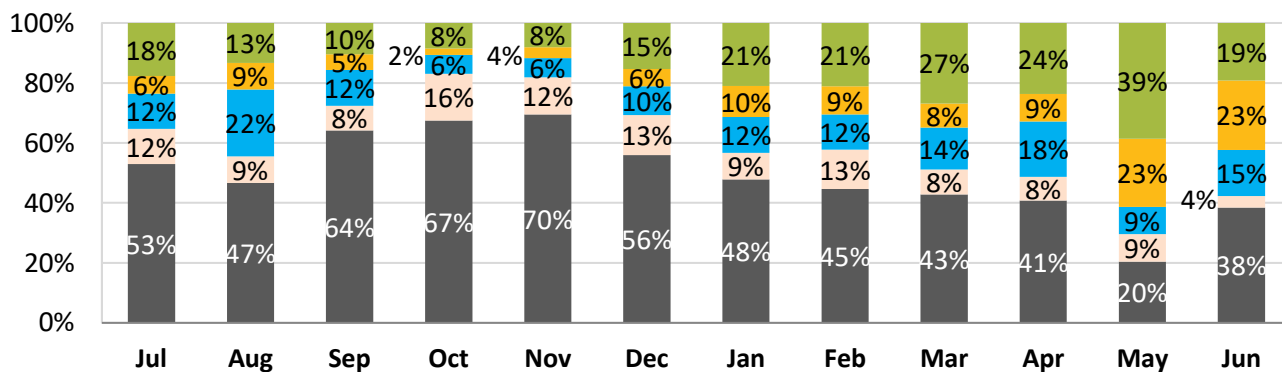


Figure 9. Proportion of RSV Cases



Episode date is the earliest available of symptom onset date, specimen collection date, date of death, date reported. Date admitted is not known for all hospitalizations; information may be updated as case investigations proceed.

Data through
6/29/2024

Epidemiology and Immunization Services Branch

www.sdepi.org (619) 692-8499



Respiratory Virus Surveillance Report



Proportion of Cases by Age Group and Fiscal Year

■ 0-4 yrs ■ 5-17 yrs ■ 18-49 yrs ■ 50-64 yrs ■ 65+ yrs

Figure 10. Proportion of COVID-19 Cases by Age Group and Fiscal Year

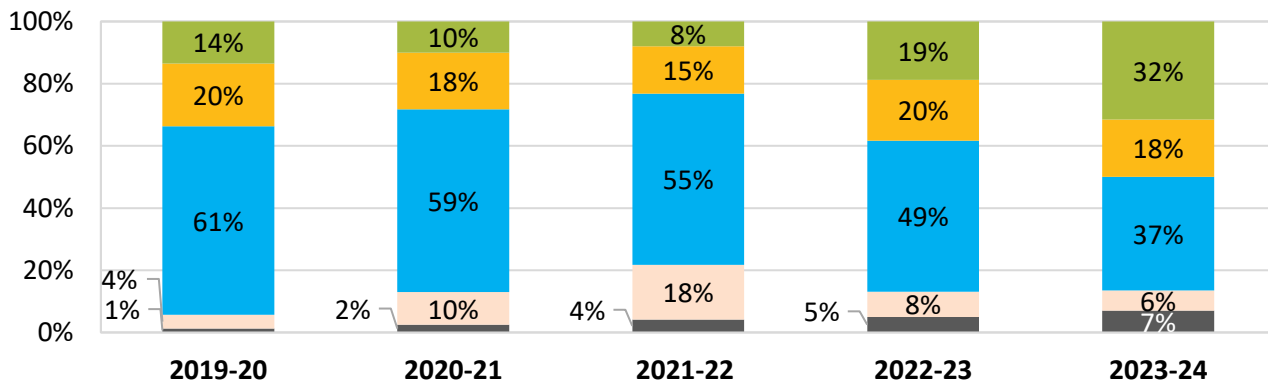


Figure 11. Proportion of Influenza Cases by Age Group and Fiscal Year

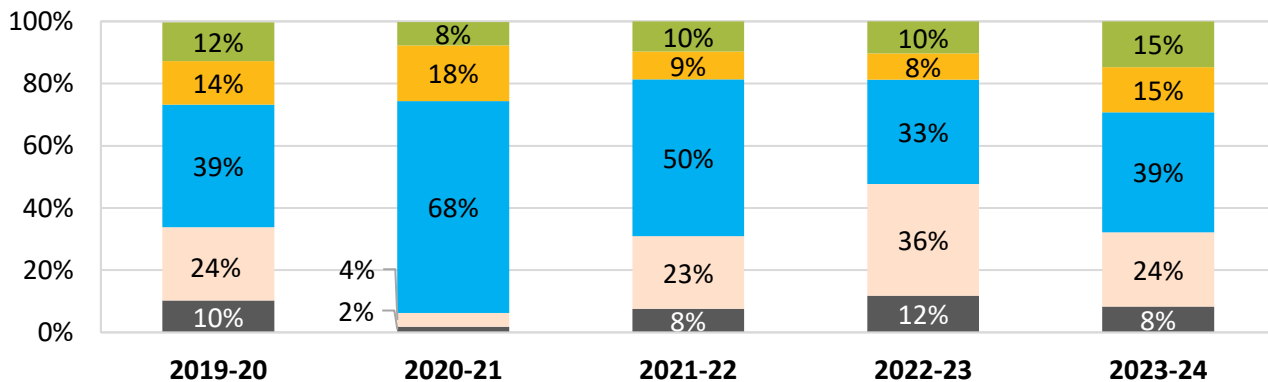
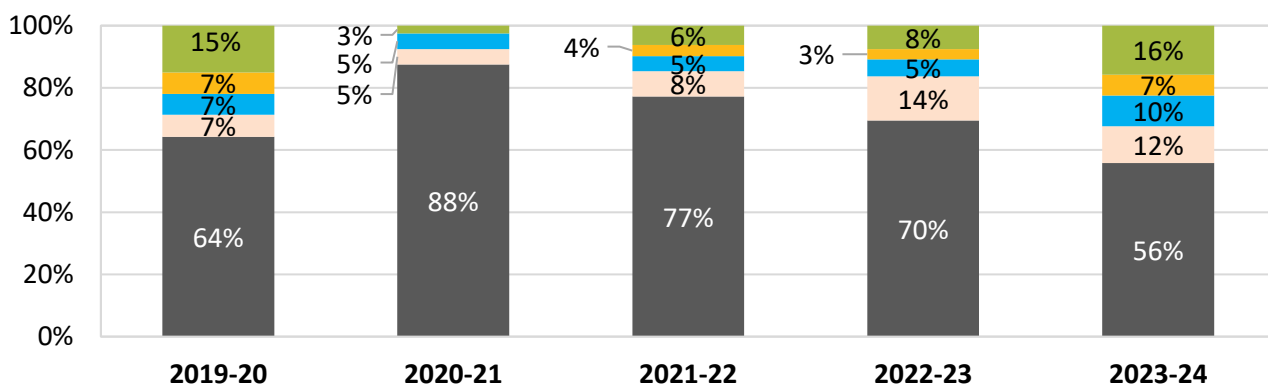


Figure 12. Proportion of RSV Cases by Age Group and Fiscal Year

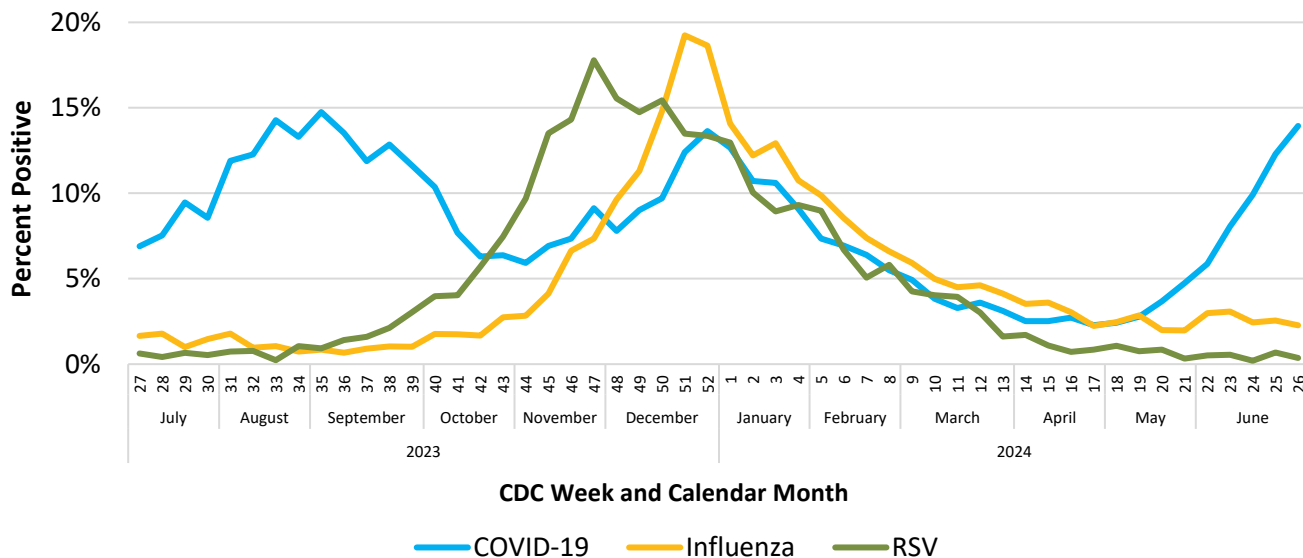


Respiratory Virus Surveillance Report



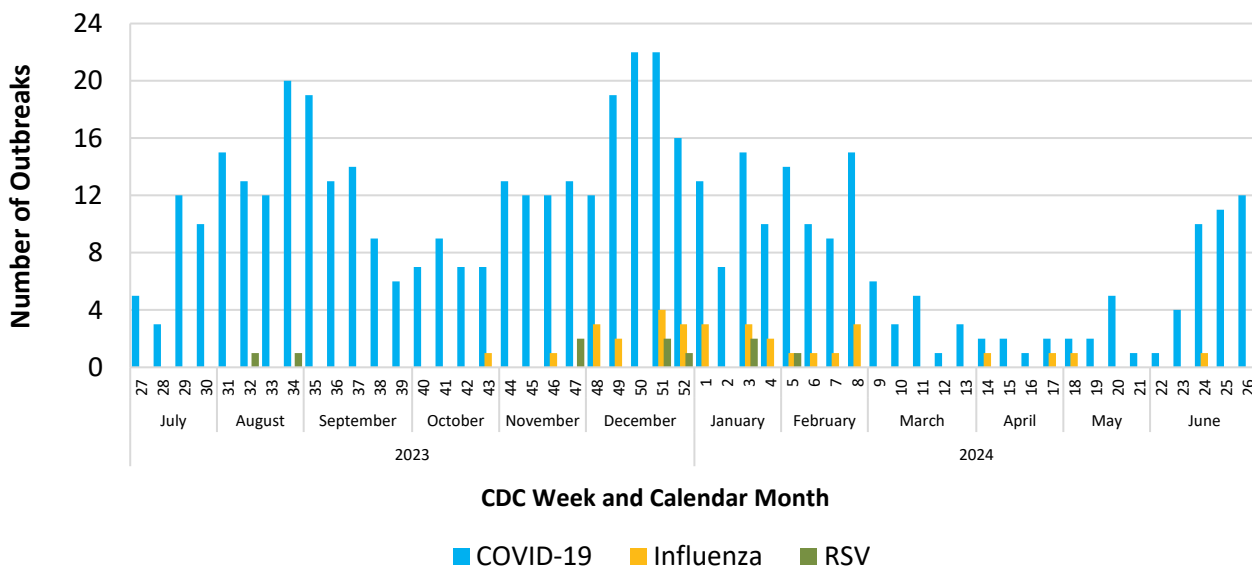
COVID-19, Influenza, and RSV Positivity

Figure 13. COVID-19, Influenza, and RSV Positivity by Week of Specimen Collection



COVID-19, Influenza, and RSV Outbreaks in Residential Congregate Settings*

Figure 14. COVID-19, Influenza, and RSV Outbreaks by Week of Onset



*Includes skilled nursing facilities, assisted living facilities, group homes, correctional facilities, homeless shelters.



Respiratory Virus Surveillance Report



COVID-19, Influenza, and RSV Deaths by Age and Fiscal Year

■ 0-4 yrs
 ■ 5-17 yrs
 ■ 18-49 yrs
 ■ 50-64 yrs
 ■ 65+ yrs

Figure 15. **COVID-19** Deaths by Age and Fiscal Year

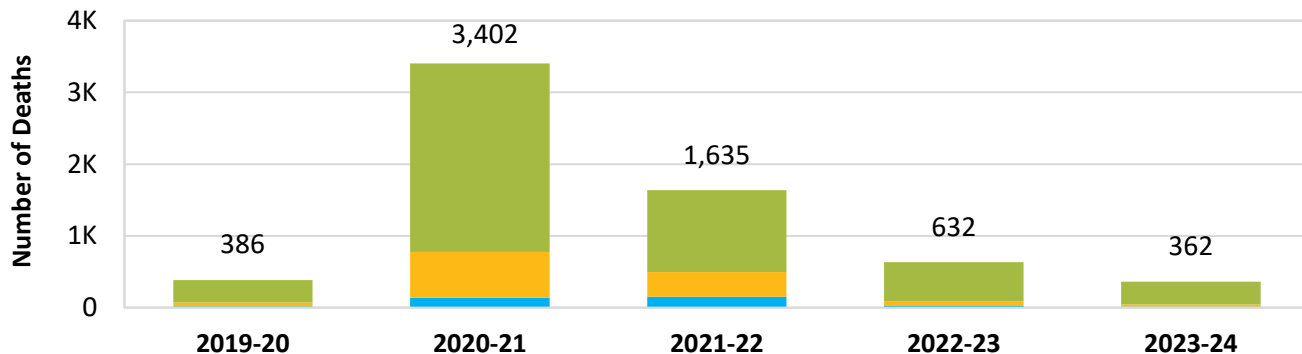


Figure 16. **Influenza** Deaths by Age and Fiscal Year

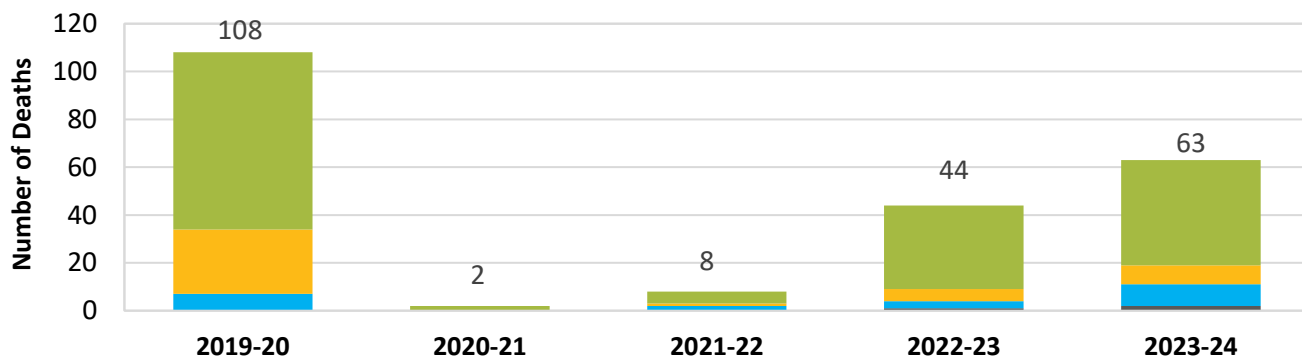
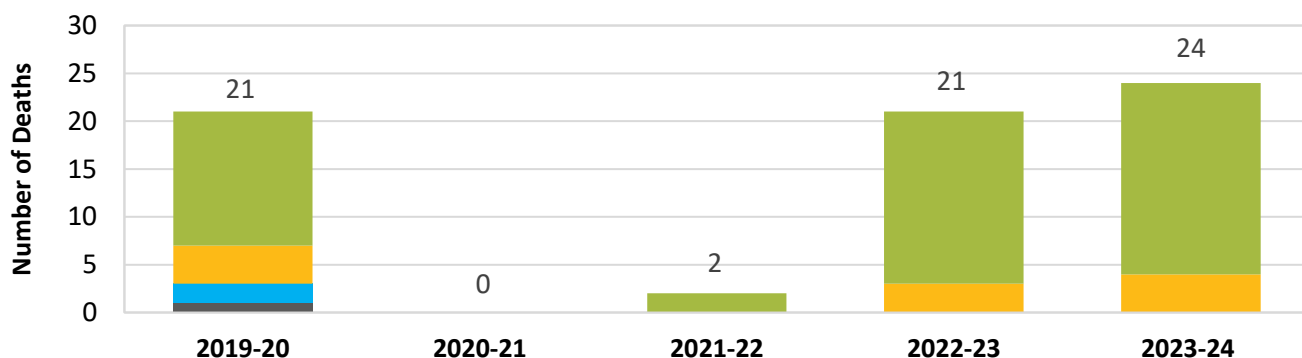


Figure 17. **RSV** Deaths by Age and Fiscal Year



Respiratory Virus Surveillance Report



Table 2. Summary of Deaths, Fiscal Year

| | COVID-19 Deaths | Influenza Deaths | RSV Deaths |
|---|-----------------|------------------|------------|
| Age | | | |
| 0-4 years | 2 (0.6%) | 2 (3.2%) | 0 (0.0%) |
| 5-17 years | 0 (0.0%) | 0 (0.0%) | 0 (0.0%) |
| 18-49 years | 11 (3.0%) | 9 (14.3%) | 0 (0.0%) |
| 50-64 years | 32 (8.8%) | 8 (12.7%) | 4 (16.7%) |
| 65+ years | 317 (87.6%) | 44 (69.8%) | 20 (83.3%) |
| Gender | | | |
| Male | 216 (59.7%) | 34 (54.0%) | 11 (45.8%) |
| Female | 146 (40.3%) | 29 (46.0%) | 13 (54.2%) |
| Race/Ethnicity | | | |
| American Indian or Alaska Native | 3 (0.8%) | 1 (1.6%) | 0 (0.0%) |
| Asian | 34 (9.4%) | 13 (20.6%) | 5 (20.8%) |
| Black or African American | 9 (2.5%) | 1 (1.6%) | 2 (8.3%) |
| Hispanic or Latino | 61 (16.9%) | 16 (25.4%) | 7 (29.2%) |
| Native Hawaiian or Other Pacific Islander | 0 (0.0%) | 1 (1.6%) | 0 (0.0%) |
| Other/Multiple Race | 6 (1.7%) | 1 (1.6%) | 0 (0.0%) |
| White | 249 (68.8%) | 30 (47.6%) | 10 (41.7%) |
| Other Significant Conditions | 269 (74.3%) | 52 (82.5%) | 19 (79.2%) |

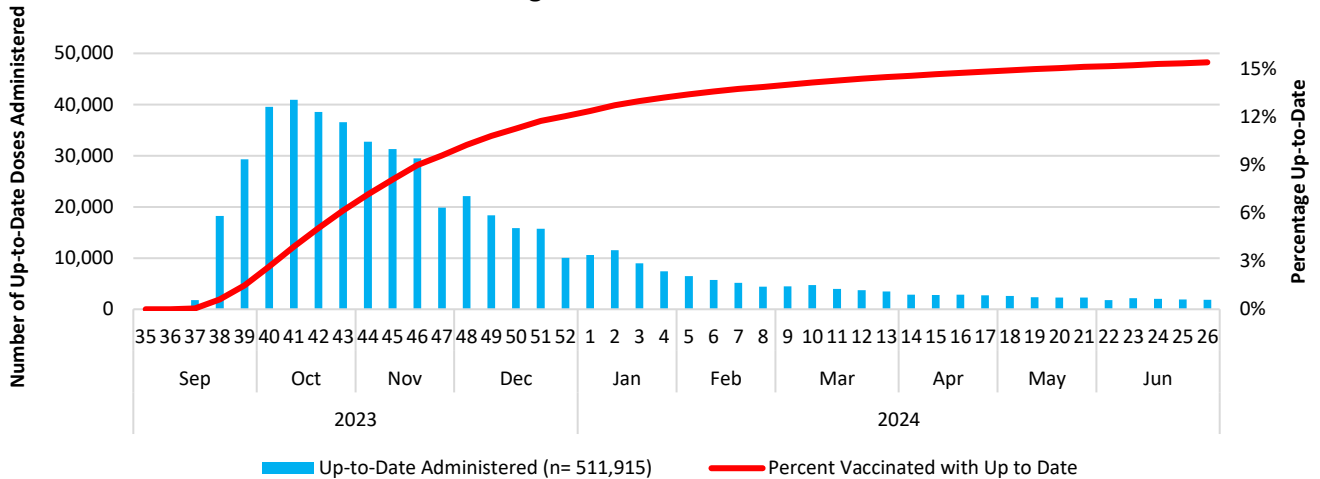


Respiratory Virus Surveillance Report



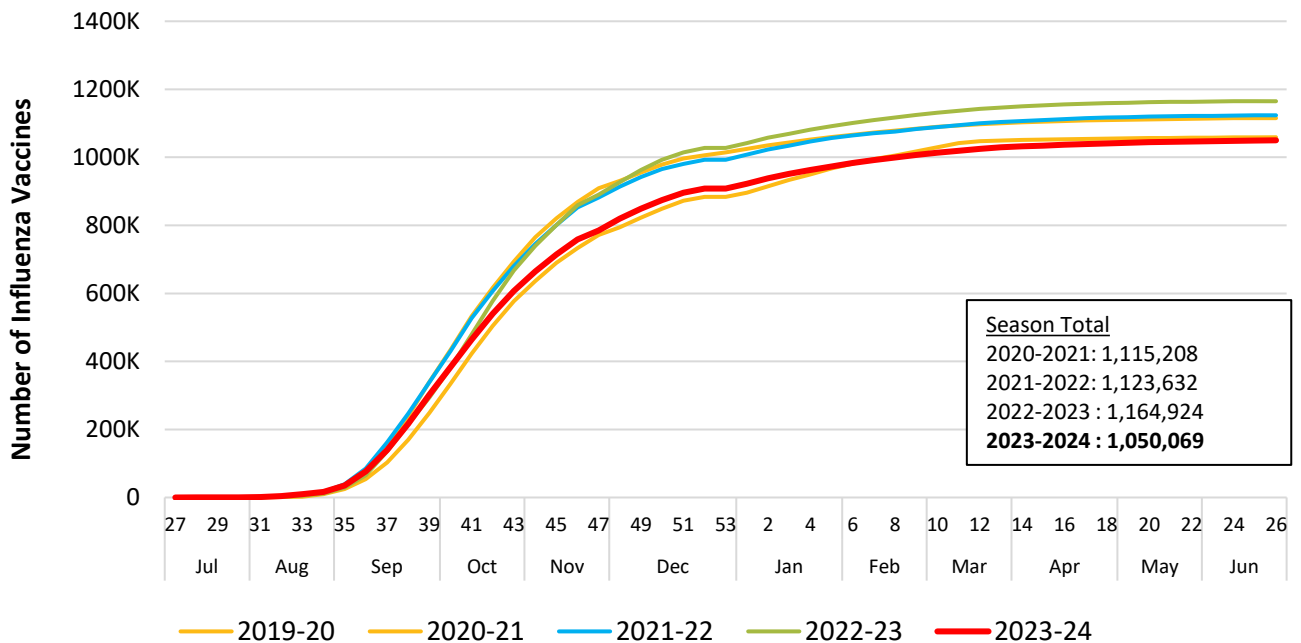
Vaccinations Administered

Figure 18. San Diego County Residents with Up-to-Date COVID-19 Vaccination Status, Ages 6 Months and Older



The line shows the percent of persons vaccinated as Up-to-Date (UTD) per the 2023/2024 guidelines. The bars show the number of UTD doses administered to San Diego County Residents. The 2023/2024 UTD guidelines per the CDC are that individuals who are at least 5 years of age and older should receive one dose of an updated COVID-19 vaccine and individuals 6 months to 4 years of age should receive multiple COVID-19 vaccines in addition to at least one dose of the updated COVID-19 vaccine. [Stay Up to Date with COVID-19 Vaccines | CDC](#)

Figure 19. Cumulative Number of Influenza Vaccinations Administered* by CDC Week and Fiscal Year



*Week 52 data are repeated for week 53 for years that do not include week 53.

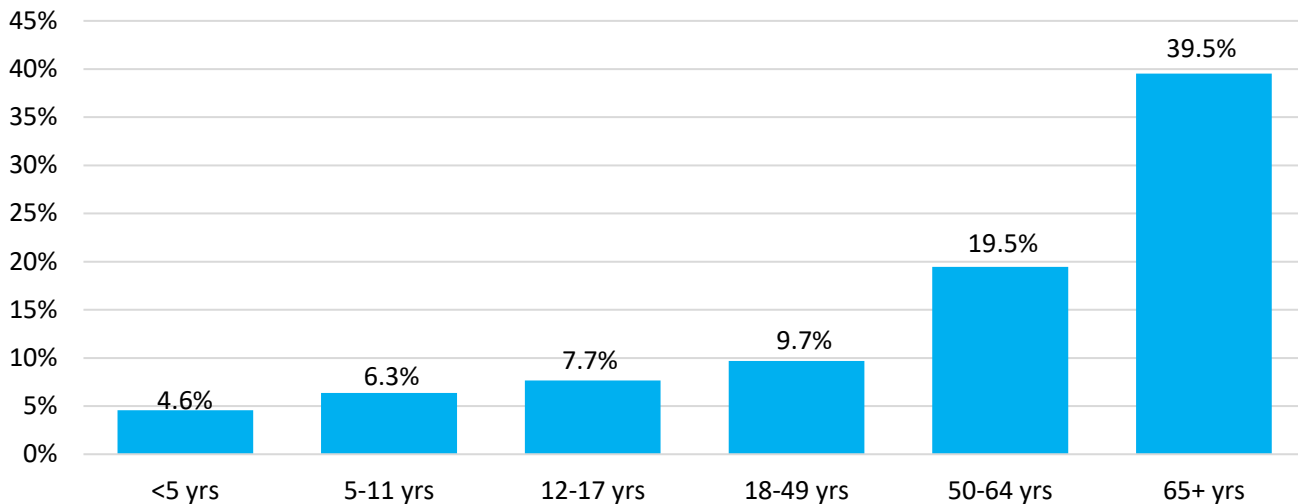


Respiratory Virus Surveillance Report



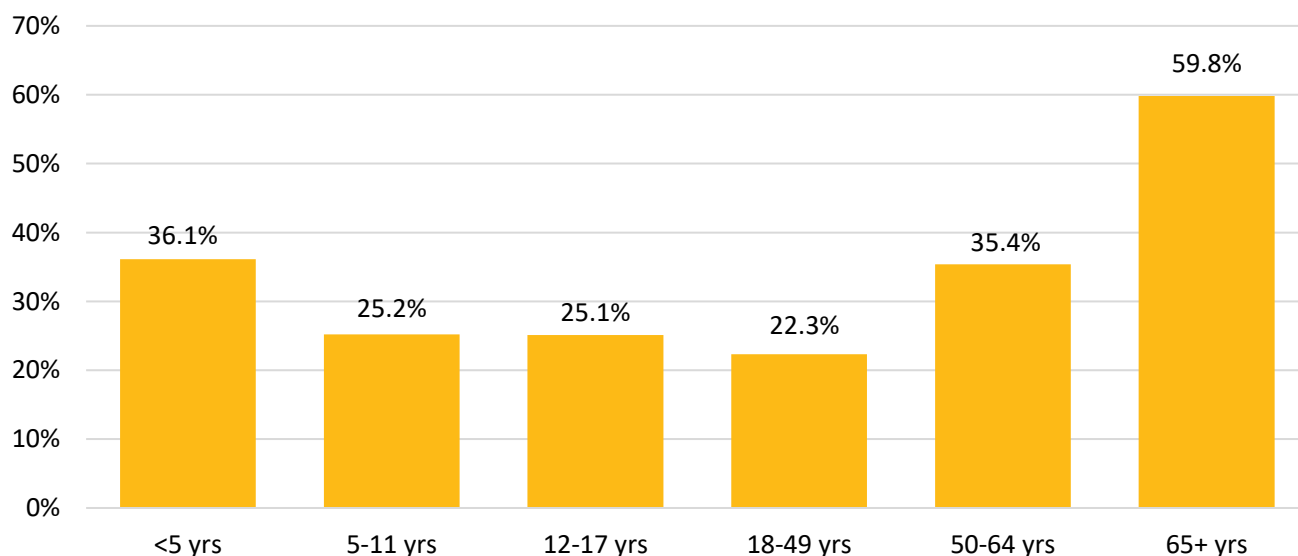
Vaccine Recipients by Age

Figure 20. Percentage of San Diego Resident Age Groups Up to Date*
on COVID-19 Vaccination



*Using the Up to Date (UTD) criteria per the 2023/2024 guidelines. [Stay Up to Date with COVID-19 Vaccines | CDC](#)

Figure 21. Percentage of San Diego Resident Age Groups that Received an Influenza
Vaccination, 2023-24 Fiscal Year

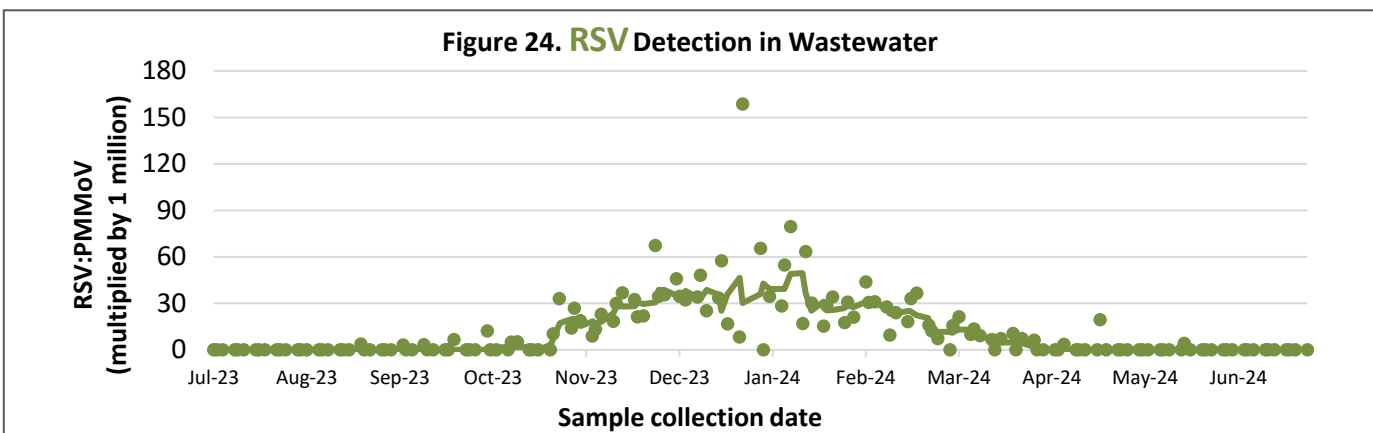
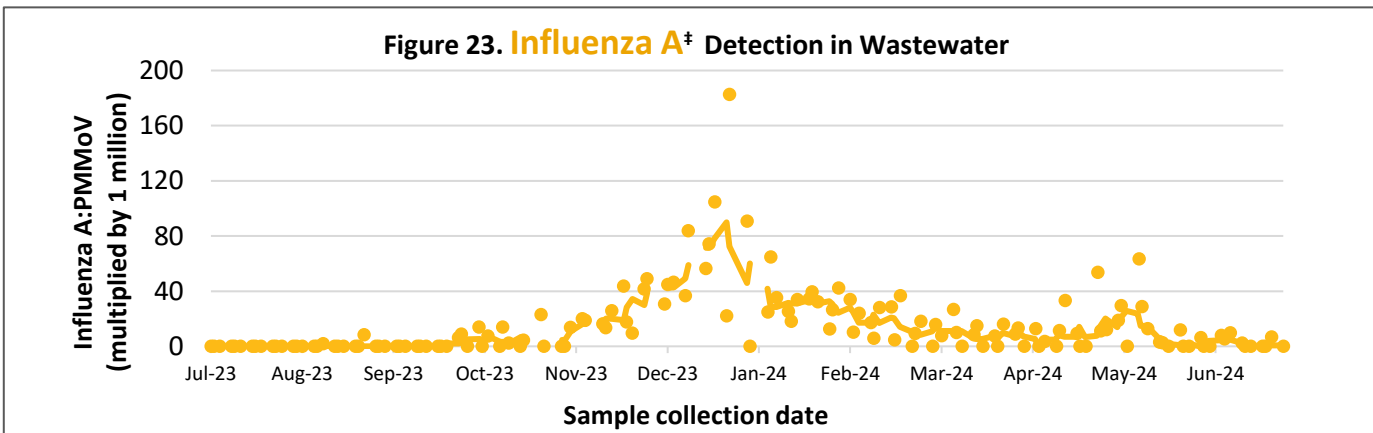
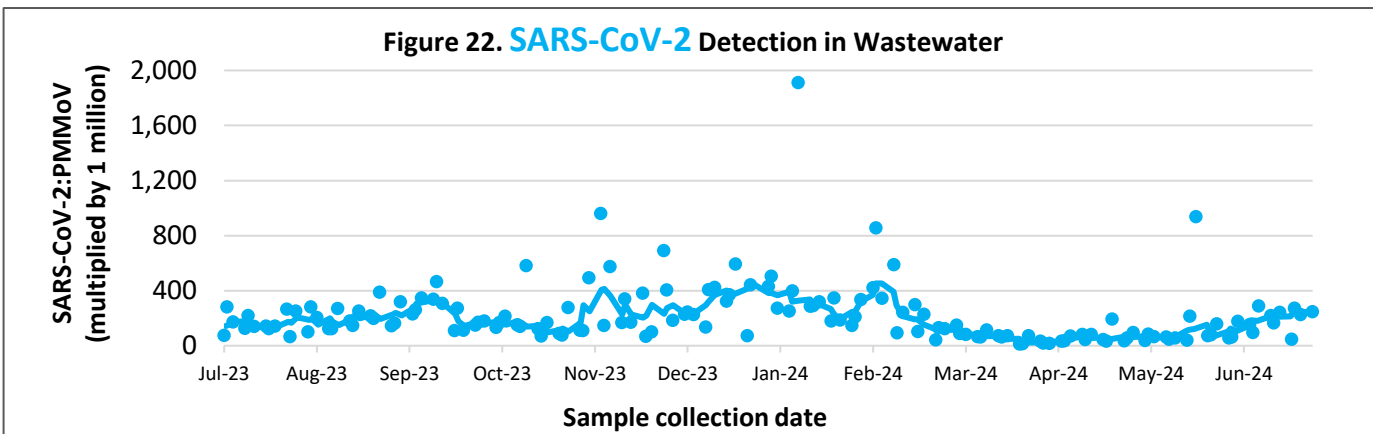


Respiratory Virus Surveillance Report



Wastewater Surveillance

— Moving Average* ● Normalized daily level†



Data provided by Wastewater SCAN: <https://wastewaterscan.org/>.

*Calculated by taking the average of the 5 samples centered around a date after excluding the highest and lowest values.

† Data are normalized to a common, harmless plant virus that is consumed when people eat called pepper mild mottle virus (PMMoV).

‡ Detection of influenza in wastewater is specific to influenza A.

Data through
6/29/2024

Epidemiology and Immunization Services Branch

www.sdepi.org (619) 692-8499



Respiratory Virus Surveillance Report



Influenza Subtypes

Figure 25. Influenza Subtypes by CDC Episode Week*

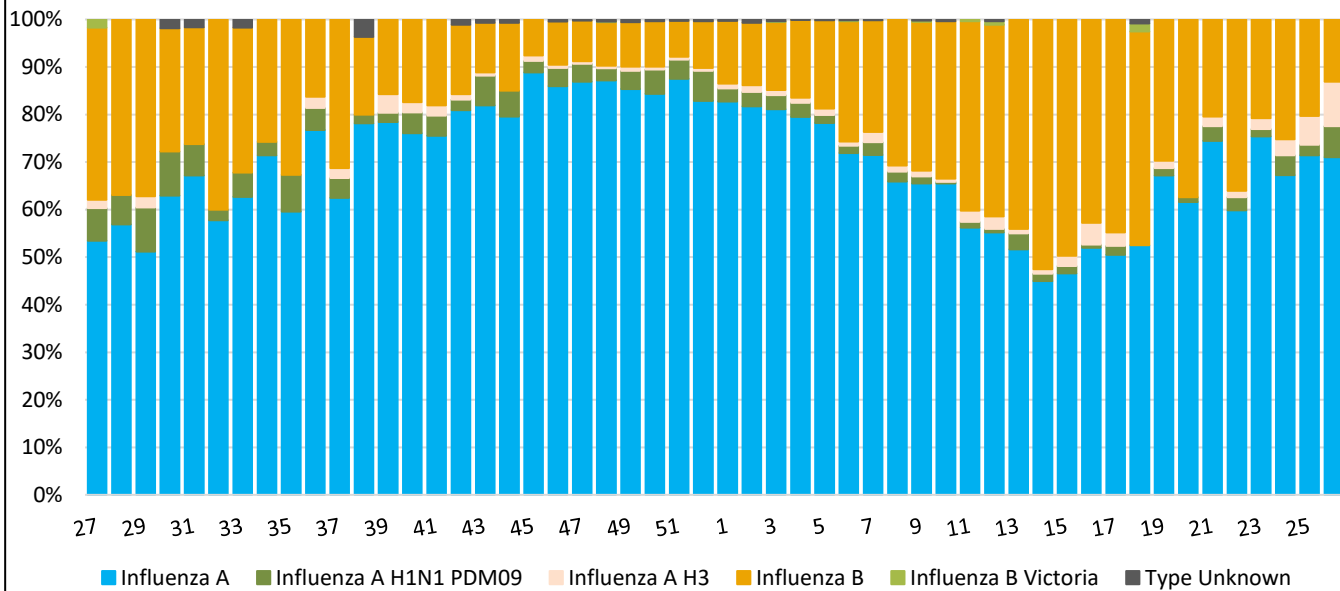
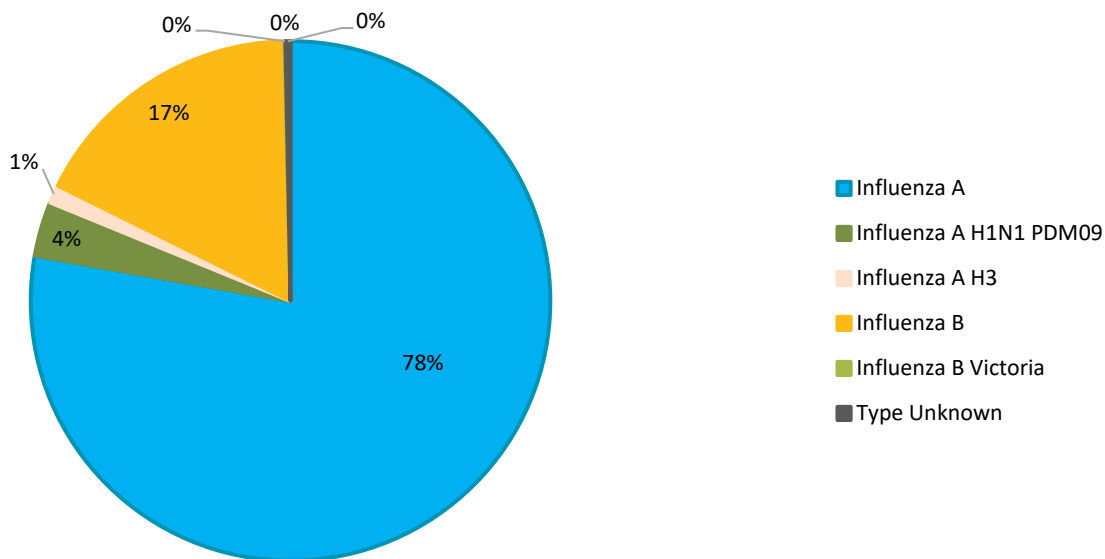


Figure 26. Influenza Subtypes, 2023-24 Fiscal Year



*Episode date is the earliest available of symptom onset date, specimen collection date, date of death, date reported. Data for the most recent week may be incomplete.

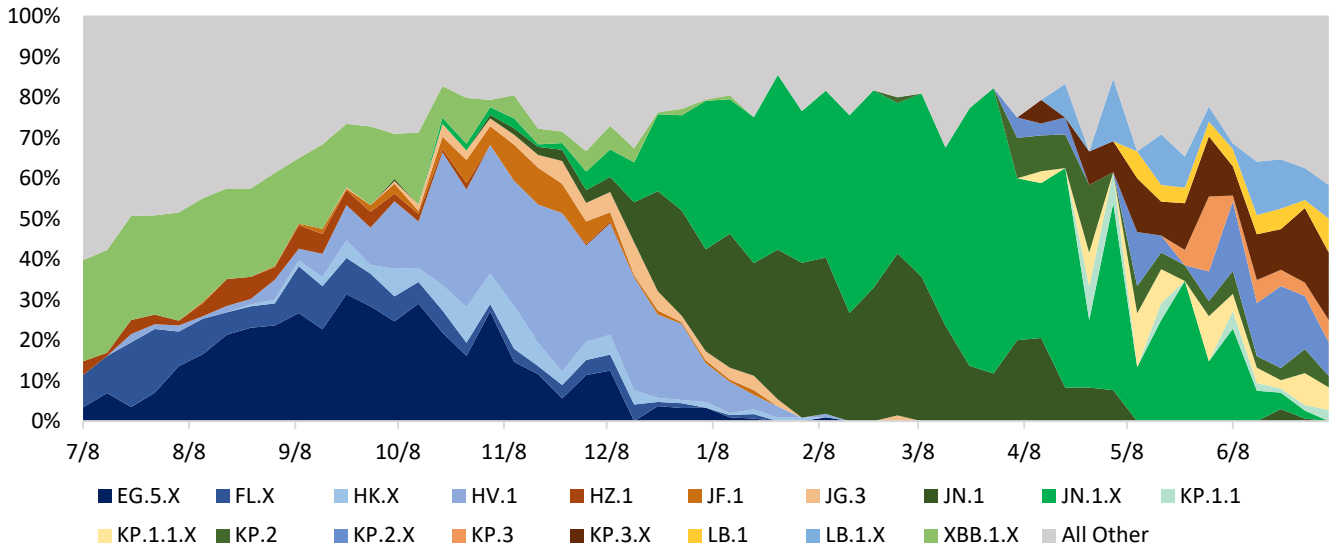


Respiratory Virus Surveillance Report



COVID-19 Surveillance on Variants

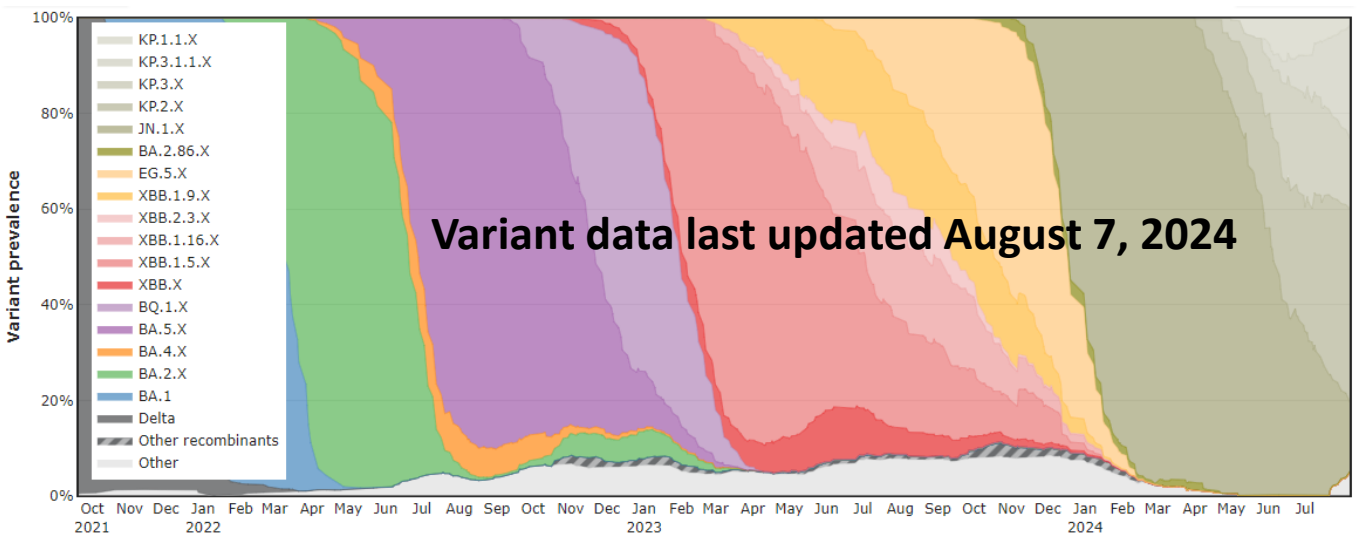
Figure 27. SARS-CoV-2 Variant Prevalence from Genomic Surveillance



Variant calls for SARS-CoV-2 genomes generated from clinical samples were obtained from the CDPH COVIDNET dashboard and GISAID. Data was then filtered to only include samples from San Diego county within the past 3-months (<https://testing.covid19.ca.gov/covidnet/>, <https://gisaid.org/>).

For some weeks, very limited specimens may have been tested and findings should be interpreted with caution.

Figure 28. SARS-CoV-2 Wastewater Lineage Prevalence Over Time in San Diego



Source: SARS-CoV-2 variant prevalence in wastewater was generated by the SEARCH consortia (<https://searchcovid.info/dashboards/wastewater-surveillance/>).

Data through
6/29/2024

Epidemiology and Immunization Services Branch
www.sdepi.org (619) 692-8499

