

# County of San Diego Monthly STD Report

Volume 16, Issue 11: Data through June, 2024; Report released November 27, 2024.



**Table 1. STDs Reported Among County of San Diego Residents, by Month and Previous 12 Months Combined.**

	2023		2024	
	June	Previous 12-Month Period*	June	Previous 12-Month Period*
Chlamydia	1495	17946	1102	15749
Female age 18-25	486	6017	347	5065
Female age ≤ 17	54	588	50	610
Male rectal chlamydia	148	1718	86	1498
Gonorrhea	547	7279	499	6120
Female age 18-25	60	904	48	587
Female age ≤ 17	7	86	14	93
Male rectal gonorrhea	140	1602	123	1471
Early Syphilis (adult total)	91	1095	34	655
Primary	15	193	7	91
Secondary	33	317	7	184
Early latent	43	585	20	379
Congenital syphilis	6	39	3	29

\* Cumulative case count of the previous 12 months.

**Table 2. Selected STD Cases and Annualized Rates per 100,000 Population for San Diego County by Age and Race/Ethnicity, Year-to-Date.**

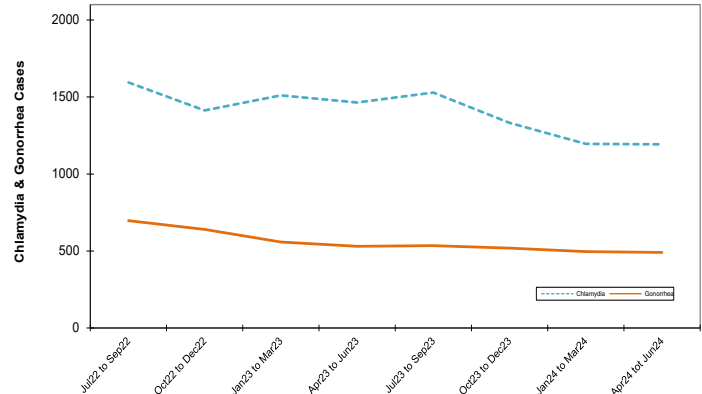
	All Races*		Asian/PI		Black		Hispanic		White	
	cases	rate	cases	rate	cases	rate	cases	rate	cases	rate
<i>All ages</i>										
Chlamydia	7165	435.9	229	106.7	285	397.7	829	147.7	963	137.8
Gonorrhea	2962	180.2	112	52.2	174	242.8	618	343.1	616	88.2
Early Syphilis	209	12.7	12	5.6	14	19.5	97	17.3	59	8.4
<i>Under 20 yrs</i>										
Chlamydia	1054	255.3	16	37.5	47	263.3	119	66.1	175	129.7
Gonorrhea	189	45.8	0	0.0	18	100.9	35	19.4	29	21.5
Early Syphilis	5	1.2	0	0.0	1	5.6	1	0.6	1	0.7

Note: Rates are calculated using 2022 Population Estimates; County of San Diego, Health and Human Services Agency, Public Health Services Division, Community Health Statistics Unit. 10/2023.

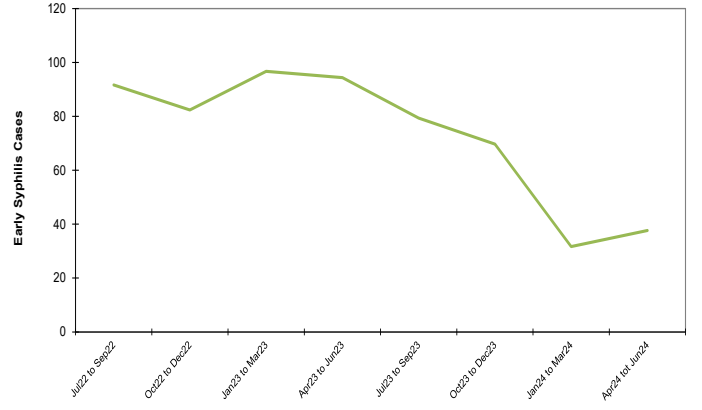
\* Includes cases designated as "other," "unknown," or missing race/ethnicity.

**Note: All data are provisional.** Case counts are based on the earliest of date of diagnosis, date of specimen collection, and treatment date. Totals for past months might change because of delays in reporting from labs and providers.

**Figure 1. Chlamydia and Gonorrhea Reported Among County of San Diego Residents, by 3-Month Period.**



**Figure 2. Early Syphilis Reported Among County of San Diego Residents, by 3-Month Period.**



## Editorial Note: First Case of Clade I Mpox Diagnosed in California in Returning Traveler

On November 15, 2024, the California Department of Public Health (CDPH) confirmed the [first reported case of mpox infection from clade I monkeypox virus \(MPXV\) in California and the United States](#). The patient recently traveled from a [country where clade I MPXV is actively spreading](#), has a relatively mild illness, and is recovering after seeking medical care for mpox symptoms in San Mateo County. CDPH, along with local health departments and the Centers for Disease Control and Prevention (CDC), is investigating potential contacts to the patient, and no additional cases have been detected to date. The overall risk of clade I MPXV to the general population in California and the U.S. continues to be low. No cases of clade I MPXV infection have been reported in San Diego County, although cases of clade IIb MPXV continue to be reported.

Providers are encouraged to have a heightened suspicion for clade I MPXV for patients with mpox-like symptoms or probable/confirmed MPXV infection who have been in [affected Central or Eastern African countries](#) in the previous 21 days and/or have had close or intimate contact with symptomatic people who have been in those countries. Clade-specific MPXV testing is recommended if clade I MPXV infection is suspected and is available through commercial laboratories and the [San Diego County Public Health Laboratory](#). The two-dose JYNNEOS [mpox vaccine](#) is recommended for people who are vulnerable to mpox or request the vaccine, including people who are traveling to countries with ongoing person-to-person transmission of clade I MPXV.

For further details, see recent health advisories from the [County of San Diego](#), [CDPH](#), and [CDC](#).

County of San Diego STD Clinics: [www.STDSanDiego.org](http://www.STDSanDiego.org)  
 Phone: (619) 692-8550 Fax: (619) 692-8543  
 STD Clinical Consultation Line: (619) 609-3245 (8am-5pm, M-F)



Provider STD Reporting: (619) 692-8520; fax (619) 692-8541  
 Sign up to receive Monthly STD Reports,  
 email [STD@sdcountry.ca.gov](mailto:STD@sdcountry.ca.gov)