

County of San Diego Monthly STD Report

Volume 17, Issue 2: Data through September 2024; Report released February 27, 2025.



Table 1. STDs Reported Among County of San Diego Residents, by Month and Previous 12 Months Combined.

| | 2023 | | 2024 | |
|------------------------------|-----------|-------------------------------|-----------|-------------------------------|
| | September | Previous 12- Month Period* | September | Previous 12- Month Period* |
| Chlamydia | 1411 | 17751 | 1282 | 15610 |
| Female age 18-25 | 439 | 5838 | 395 | 5078 |
| Female age ≤ 17 | 45 | 583 | 49 | 602 |
| Male rectal chlamydia | 135 | 1743 | 106 | 1305 |
| Gonorrhea | 517 | 6791 | 529 | 6159 |
| Female age 18-25 | 53 | 804 | 57 | 589 |
| Female age ≤ 17 | 8 | 96 | 7 | 85 |
| Male rectal gonorrhea | 115 | 1528 | 116 | 1467 |
| Early Syphilis (adult total) | 67 | 1058 | 20 | 549 |
| Primary | 6 | 169 | 5 | 74 |
| Secondary | 24 | 308 | 4 | 152 |
| Early latent | 37 | 581 | 11 | 323 |
| Congenital syphilis | 0 | 41 | 1 | 21 |

* Cumulative case count of the previous 12 months.

Table 2. Selected STD Cases and Annualized Rates per 100,000 Population for San Diego County by Age and Race/Ethnicity, Year-to-Date.

| | All Races* | | Asian/PI | | Black | | Hispanic | | White | |
|----------------|------------|-------|----------|-------|-------|-------|----------|-------|-------|-------|
| | cases | rate | cases | rate | cases | rate | cases | rate | cases | rate |
| All ages | | | | | | | | | | |
| Chlamydia | 11613 | 470.6 | 362 | 115.7 | 459 | 396.3 | 1289 | 150.2 | 1544 | 144.6 |
| Gonorrhea | 4604 | 186.6 | 184 | 58.8 | 284 | 245.2 | 925 | 345.2 | 968 | 90.6 |
| Early Syphilis | 342 | 13.9 | 22 | 7.0 | 32 | 27.6 | 146 | 17.0 | 97 | 9.1 |
| Under 20 yrs | | | | | | | | | | |
| Chlamydia | 1765 | 287.0 | 30 | 46.1 | 70 | 246.6 | 177 | 66.1 | 255 | 119.6 |
| Gonorrhea | 305 | 49.6 | 3 | 4.6 | 26 | 91.6 | 51 | 19.0 | 38 | 17.8 |
| Early Syphilis | 9 | 1.5 | 0 | 0.0 | 1 | 3.5 | 5 | 1.9 | 1 | 0.5 |

Note: Rates are calculated using 2023 Population Estimates; County of San Diego, Health and Human Services Agency, Public Health Services Division, Community Health Statistics Unit. 01/2025.

* Includes cases designated as "other," "unknown," or missing race/ethnicity.

Note: All data are provisional. Case counts are based on the earliest of date of diagnosis, date of specimen collection, and treatment date. Totals for past months might change because of delays in reporting from labs and providers.

Figure 1. Chlamydia and Gonorrhea Reported Among County of San Diego Residents, by 3-Month Period.

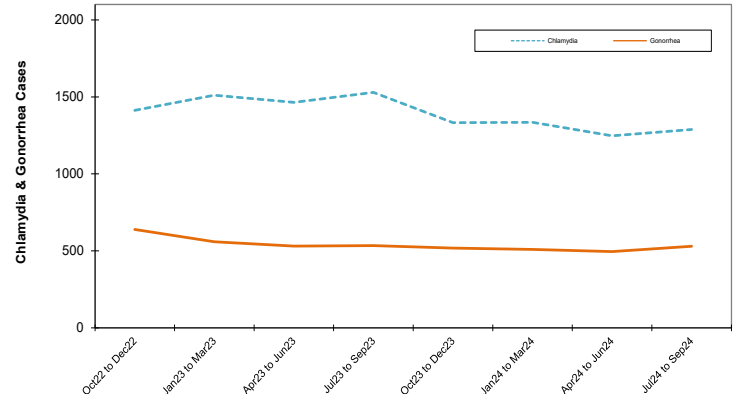
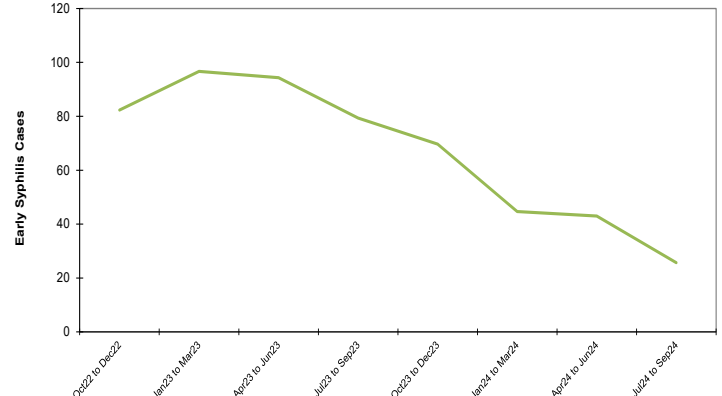


Figure 2. Early Syphilis Reported Among County of San Diego Residents, by 3-Month Period.



Editorial Note: Adverse Events Following Receipt of Injectable Ceftriaxone

The Centers for Disease Control and Prevention (CDC), in collaboration with state and local health departments, is investigating reports of serious adverse events, including deaths, following receipt of injectable ceftriaxone. To date, events have not been associated with a single product manufacturer or lot, and a definitive causal link to ceftriaxone has not been established. CDC is requesting reports of serious adverse events following the administration of ceftriaxone to assist with the ongoing investigation. Currently, there is no recommendation to withhold ceftriaxone administration for patients who need it. Please report adverse events that meet the following criteria, occurring after September 1, 2024, to the Epidemiology Unit by calling 619-692-8499 (Monday-Friday 8 AM - 5 PM):

1. Occurred within 6 hours after receipt of injectable* ceftriaxone in a non-ICU setting, and
2. Resulted in death or required cardiopulmonary resuscitation**, and
3. Not attributed by the treating provider(s) to a cause other than ceftriaxone administration***

*including both intramuscular and intravenous routes of administration

**cardiopulmonary resuscitation defined as the use of chest compressions and mechanical ventilation or provision of rescue breaths to maintain circulatory flow and oxygenation during cardiac arrest

***such as known infection, other underlying medical condition, or exposure to a medication or medical product other than ceftriaxone

Healthcare providers should also report serious adverse events that might be associated with a medical product to the Food and Drug Administration or [FDA's MedWatch Program](#) and to the product manufacturer. For additional guidance, please see the [health advisory](#) released on 2/26/25.

County of San Diego STD Clinics: www.STDSanDiego.org
Phone: (619) 692-8550 Fax: (619) 692-8543
STD Clinical Consultation Line: (619) 609-3245 (8am-5pm, M-F)



Provider STD Reporting: (619) 692-8520; fax (619) 692-8541
Sign up to receive Monthly STD Reports,
email STD@sdcounty.ca.gov