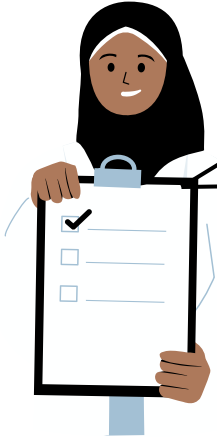


# Test Requisition Form: Extended Race and Ethnicity

**\*Race**  American Indian/ Alaska Native  Asian Pacific Islander  Black/African American  
 White  Unknown  Decline

**\*Ethnicity**  Hispanic/ Latino  Not Hispanic/ Latino  Unknown  Decline

For More Information on Extended Race and Ethnicity Click [Here](#).



Extended Race

Extended Ethnicity

If expanded race and ethnicity are available for the patient/case (e.g., documented in medical records), please include it on the test requisition form. **Please keep in mind, options for extended race and ethnicity are limited to those listed below.**

## Extended Ethnicity Options

### 1. Hispanic or Latino

- Andalusian
- Argentinian
- Asturian
- Balearic Islander
- Bolivian
- Canal Zone
- Canarian
- Castillian
- Catalanian
- Central American
- Central American Indian
- Chicano
- Chilean
- Colombian
- Costa Rican
- Criollo
- Cuban
- Dominican
- Ecuadorian
- Gallego
- Guatemalan
- Honduran
- La Raza
- Latin American
- Mexican
- Mexican American
- Mexican American Indian
- Mexicano
- Nicaraguan
- Panamanian
- Paraguayan
- Peruvian
- Puerto Rican
- Salvadoran
- South American
- South American Indian
- Spaniard
- Spanish Basque
- Uruguayan
- Valencian
- Venezuelan

### 2. Not Hispanic or Latino

\*No further options after choosing this

## Extended Race Options

### 1. Asian

- Asian Indian
- Bangladeshi
- Bhutanese
- Burmese
- Cambodian
- Chinese
- Filipino
- Hmong
- Indonesian
- Iwo Jiman
- Japanese
- Korean
- Laotian
- Madagascar
- Malaysian
- Maldivian
- Nepalese
- Okinawan
- Pakistani
- Singaporean
- Sri Lankan
- Taiwanese
- Thai
- Vietnamese

## 2. American Indian or Alaska Native

- Alaska Indian
- Alaska Native
- Aleut
- American Indian
- Apache
- Arctic Slope Inupiat
- Bering Straits Inupiat
- Blackfeet
- Bristol Bay Yupik
- Cahuilla
- Calista Yupik
- Campo
- Canadian Indian
- Capitan Grande
- Central American Indian
- Cherokee
- Cheyenne
- Chickasaw
- Chippewa
- Choctaw
- Comanche
- Creek
- Cupeno
- Cuyapaipa
- Diegueno
- French American Indian
- Georgetown (Yupik-Eskimo)
- Inaja-Cosmit
- Inupiaq
- Inupiat Eskimo
- Iroquois
- La Jolla
- La Posta
- Los Coyotes
- Luiseno
- Lumbee
- Manzanita
- Mauneluk Inupiat
- Mesa Grande
- Mexican American Indian
- Mission Indians
- Nana Inupiat
- Navajo
- Pala
- Pauma
- Pima
- Potawatomi
- Pueblo
- Puget Sound Salish
- San Pasqual
- Santa Ysabel
- Seminole
- Siberian Yupik
- Sioux
- South American Indian
- Spanish American Indian
- Sycuan
- Tlingit-Haida
- Tohono O'Odham
- White Mountain Inupiat
- Yaqui
- Yupik Eskimo

## 3. Black or African American

- African
- African American
- Bahamian
- Barbadian
- Black
- Botswanan
- Dominica Islander
- Dominican
- Ethiopian
- Haitian
- Jamaican
- Liberian
- Namibian
- Nigerian
- Tobagonian
- Trinidadian
- West Indian
- Zairean

## 4. Native Hawaiian or Other Pacific Islander

- Carolinian
- Chamorro
- Chuukese
- Fijian
- Guamanian
- Kiribati
- Kosraean
- Mariana Islander
- Marshallese
- Melanesian
- Micronesian
- Native Hawaiian
- New Hebrides
- Other Pacific Islander
- Palauan
- Papua New Guinean
- Pohnpeian
- Polynesian
- Saipanese
- Samoan
- Solomon Islander
- Tahitian
- Tokelauan
- Tongan
- Yapese

## 5. White

- Armenian
- English
- European
- French
- German
- Irish
- Italian
- Polish
- Scottish
- Middle Eastern or North African (MENA)\*
- Afghan
- Arab
- Assyrian
- Egyptian
- Israeli
- Iranian
- Iraqi
- Lebanese
- Palestinian
- Syrian

\*MENA is aggregated up to the White group. For documentation purposes this racial group is in its own subgroup from White.



This sheet is supported by the Centers for Disease Control and Prevention of the U.S. Department of Health and Human Services (HHS) as part of a financial assistance award totaling \$24,255,805 with 100 percent funded by CDC/HHS. The contents are those of the author(s) and do not necessarily represent the official views of, nor an endorsement, by CDC/HHS, or the U.S. Government.

