



INFLUENZA WATCH

Week 10
Ending 3/12/2016

The purpose of the weekly *Influenza Watch* is to summarize current influenza surveillance in San Diego County. **Please note that reported weekly data are preliminary and may change due to delayed submissions and additional laboratory results.**

Report Contents

- Page 1: Overview & Indicators
- Page 2: Virus Characteristics
- Pages 3-7: Trend graphs
- Page 7: Reporting Information

Current Week

Current Week 10 (ending 3/12/2016)

- 483 new influenza detections reported: *Elevated level*
- 6% influenza-like-illness (ILI) among emergency department visits: *Expected level*
- 15 influenza-related deaths reported this week
- 14% of deaths registered with pneumonia and/or influenza: *Elevated level*

Current Season Summary

4,928

Total Cases

95

ICU Cases

41

Deaths

15

Outbreaks

Virus Characteristics

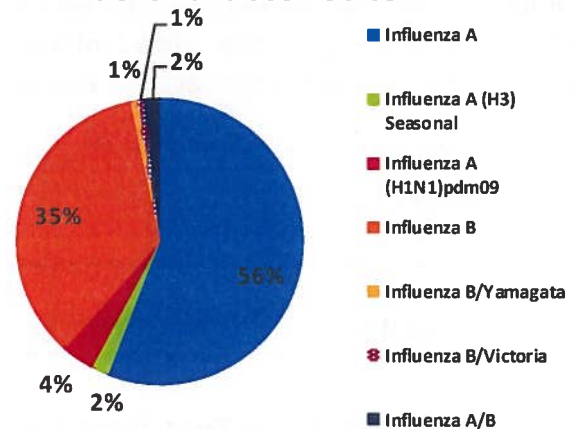


Table 1. Influenza Surveillance Indicators

Indicator	FY 2015-16*			FY 2014-15		Prior 3-Year Average**	
	Week 10	Week 9	FYTD#	Week 10	FYTD#	Week 10	FYTD#
	All influenza detections reported (rapid or PCR)	483	847	4,928	153	6,391	149
Percent of emergency department visits for ILI	6%	6%		5%		5%	
Percent of deaths registered with pneumonia and/or influenza	14%	10%		9%		8%	
Number of influenza-related deaths reported^	15	11	41	6	90	4	69

* FYTD=Fiscal Year To Date (FY is July 1- June 30, Weeks 27-26). Total deaths reported in prior years: 97 in 2014-15, 70 in 2013-14, 65 in 2012-13.

Previous weeks case counts or percentages may change due to delayed processing or reporting.

** Includes FYs 2014-15, 2013-14, and 2012-13.

^ Current FY deaths are shown by week of report; by week of death for prior FYs.

Vaccine Changes for Next Flu Season

On March 4, 2016, the Food and Drug Administration’s Vaccines and Related Biological Products Advisory Committee unanimously approved recommendations regarding the trivalent and quadrivalent influenza vaccines to be distributed during the 2016-2017 flu season.

The committee voted that the components of the trivalent influenza vaccine for the upcoming flu season should include:

- An A/California/7/2009 (H1N1) pdm09-like virus (same as current season);
- An A/Hong Kong/4801/2014 (H3N2)-like virus (new); and
- A B/Brisbane/60/2008-like virus of the B/Victoria lineage (in current season quadrivalent vaccine, but not in current season trivalent vaccine).

Additionally, the quadrivalent influenza vaccine should include a B/Phuket/3073/2013-like virus of the B/Yamagata lineage as the second influenza B strain in the vaccine. This is a component of both the trivalent and quadrivalent vaccines this season.

All four components correspond with the recommendations of the World Health Organization, which [announced](#) its proposed components for influenza vaccines in the Northern Hemisphere on February 25, 2016.

Table 2. Influenza Detections Reported, FY 2015-16*

Positive Test Type/Subtype	Week 10	Total To-Date
Influenza A†	241	2,755
Influenza A(H1N1) Pandemic 2009	16	178
Influenza A (H3) Seasonal	4	98
Influenza B†	206	1,734
Influenza B/Victoria	1	26
Influenza B/Yamagata	1	47
Influenza A/B†	14	90
Total	483	4,928

* FY is July 1- June 30.

† No further characterization performed, or results were not yet available at time of publication.

Note: Totals may change due to further laboratory findings.

Influenza Watch

Figure 1. Percent of Emergency Department Visits for Influenza-like Illness by Week and FY

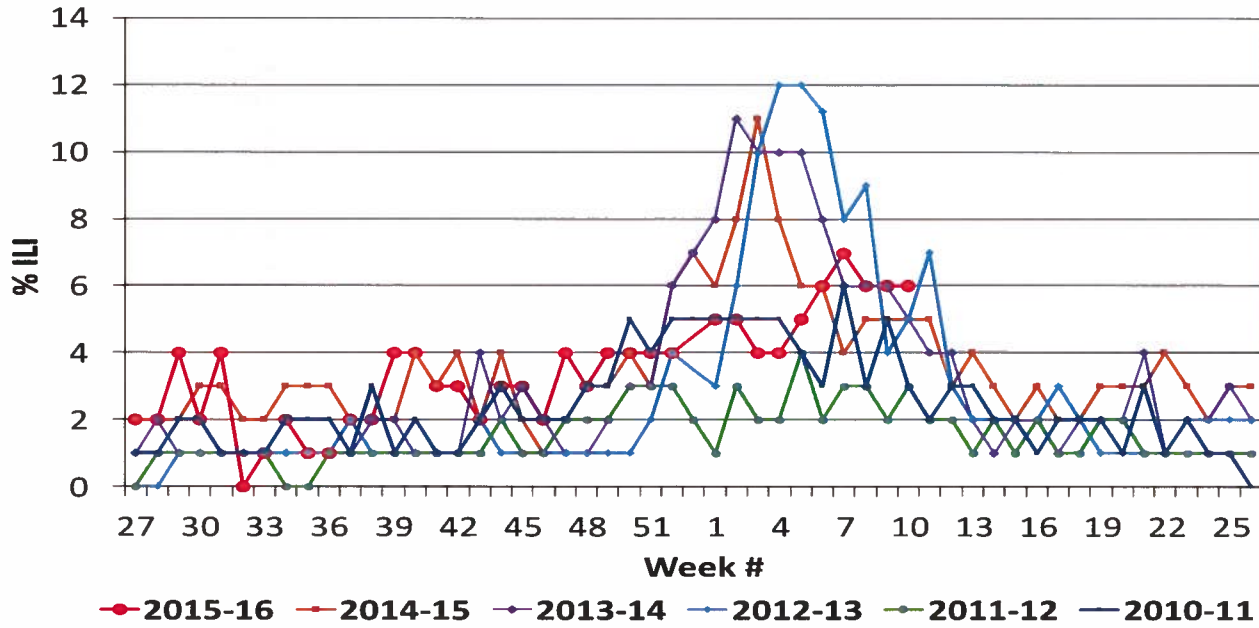
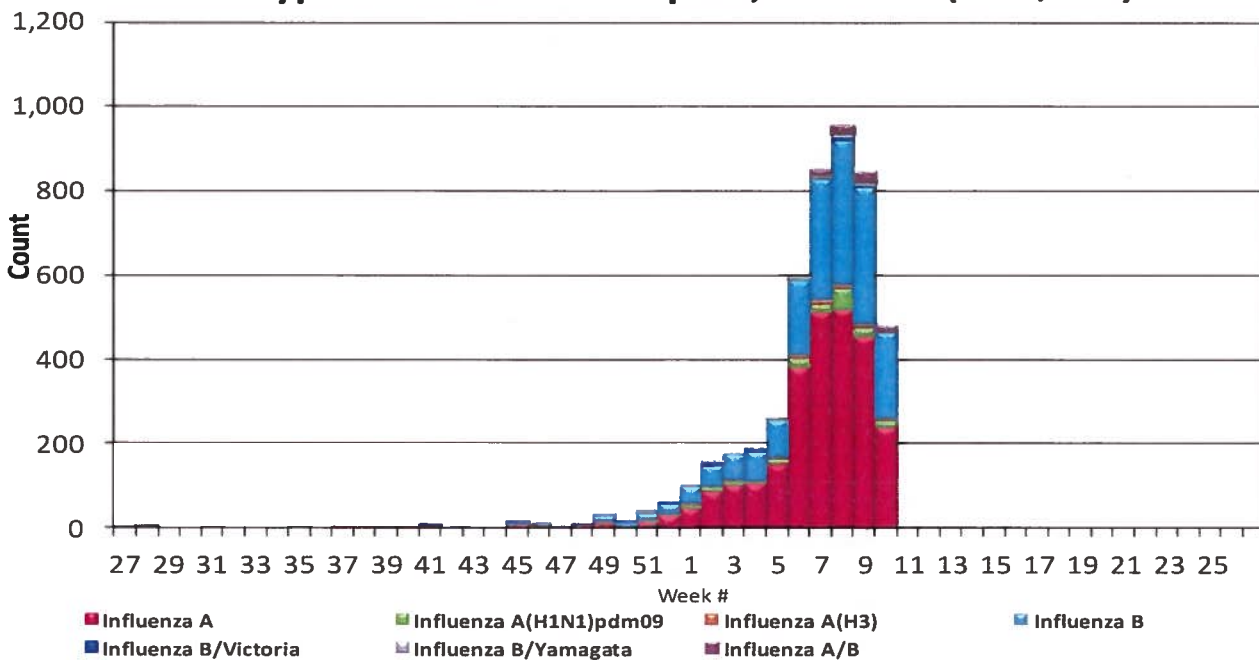


Figure 2. San Diego County Influenza Detections by Type and Week of Report, 2015-16 (N=4,928)



Influenza Watch

Figure 3. Percent of Reported Influenza Cases by Age Group and Season, 2009-10 to 2015-16 YTD

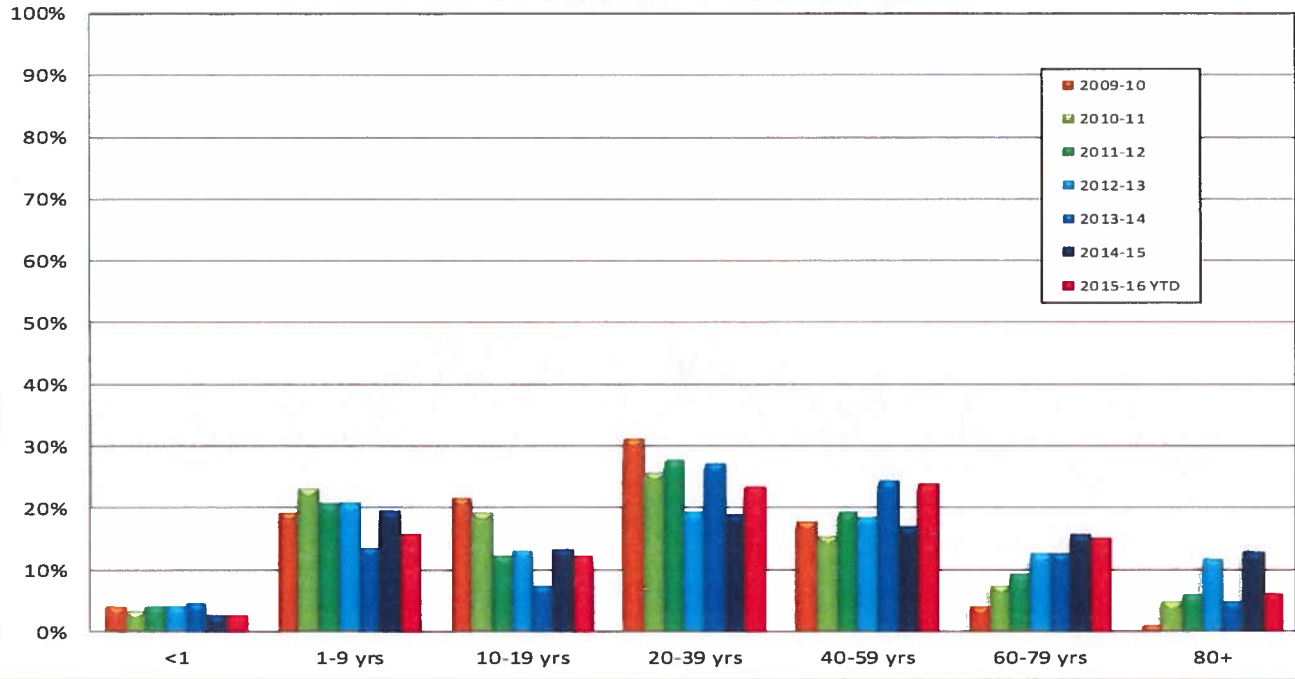


Figure 4. Cumulative Influenza Case Reports by Week & Season

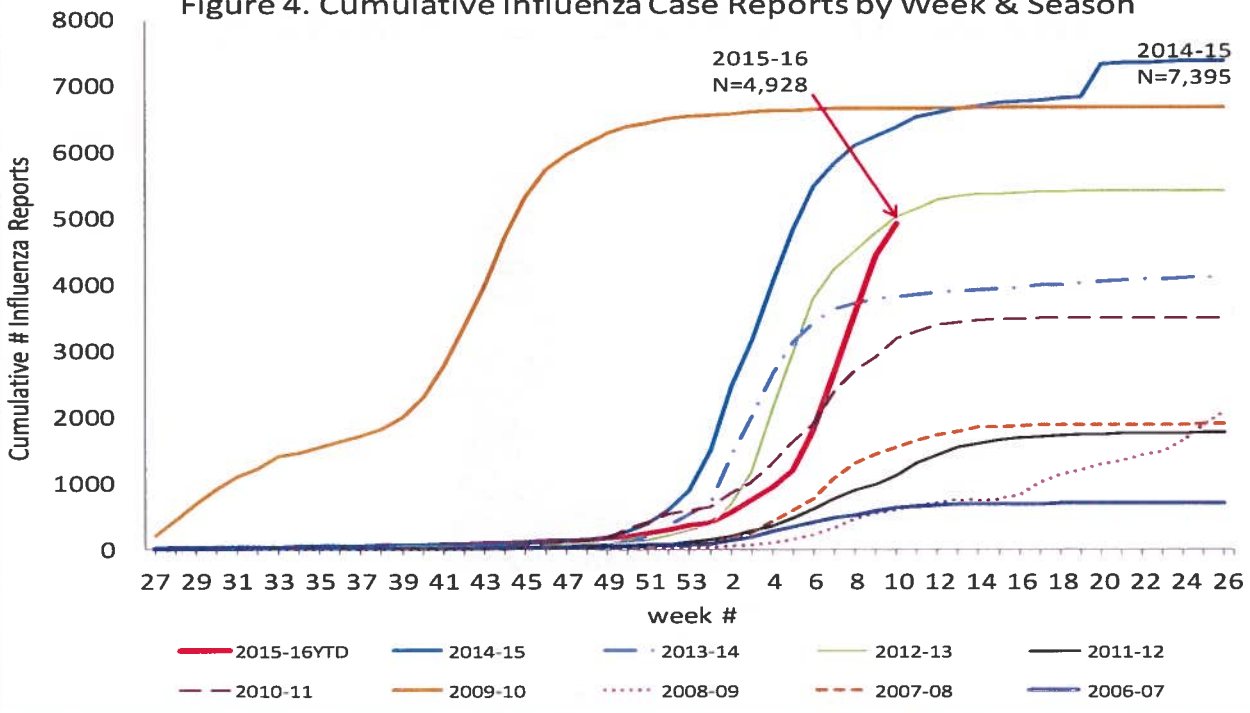


Figure 5. Percent of San Diego County Emergency Department Visits for Influenza-like-Illness by Week and FY Compared to 5-Year Baseline & Upper 95% Threshold Values (Serfling Method)

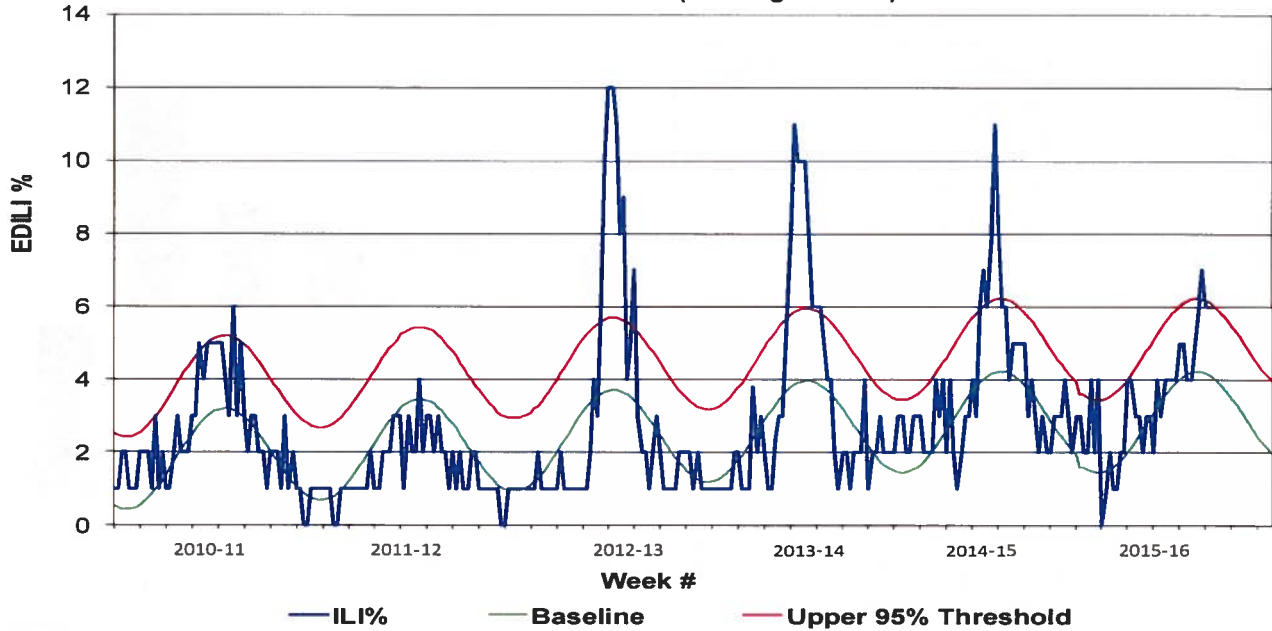


Figure 6. Percent of All San Diego County Deaths Registered with Pneumonia and/or Influenza by Week and FY Compared to Prior 5-Year Baseline & Upper 95% Threshold (Serfling Method)

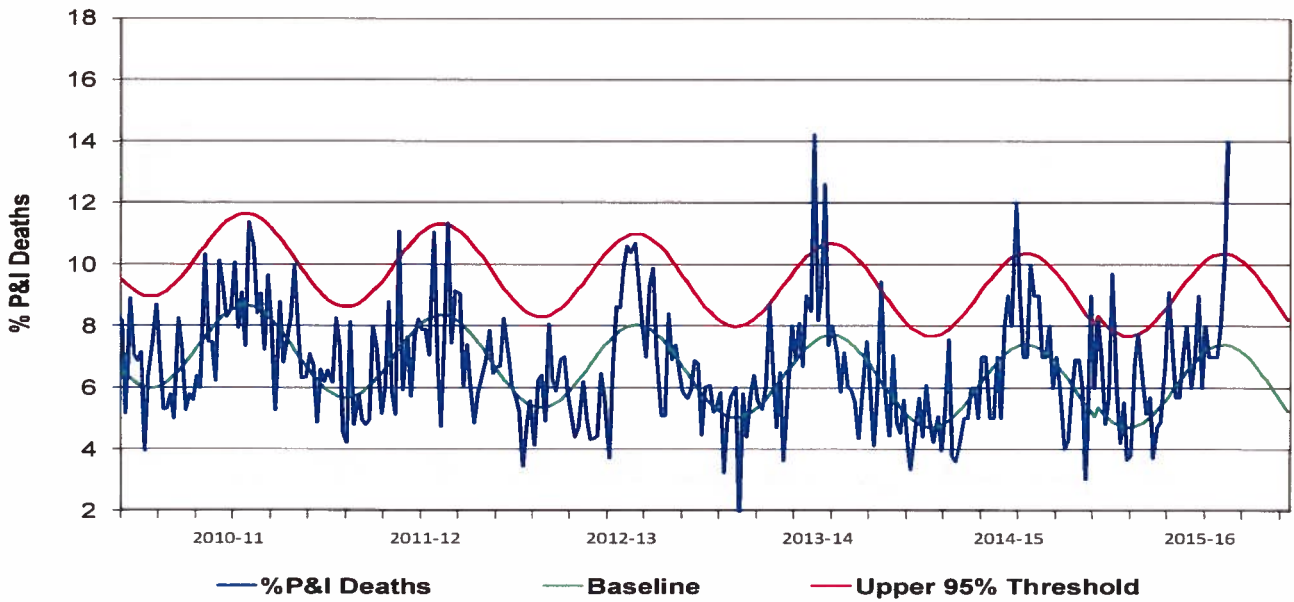


Figure 7. Influenza Deaths by Type, and Season

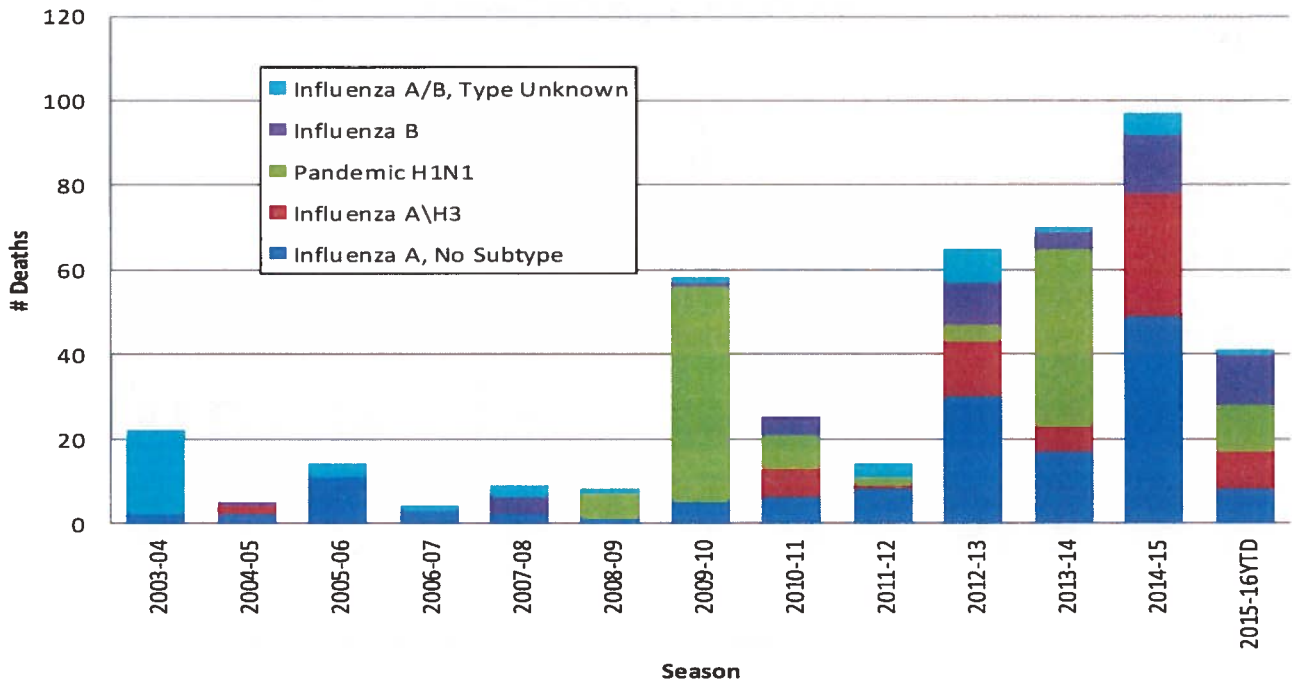


Figure 8. Influenza Deaths by Age and Season

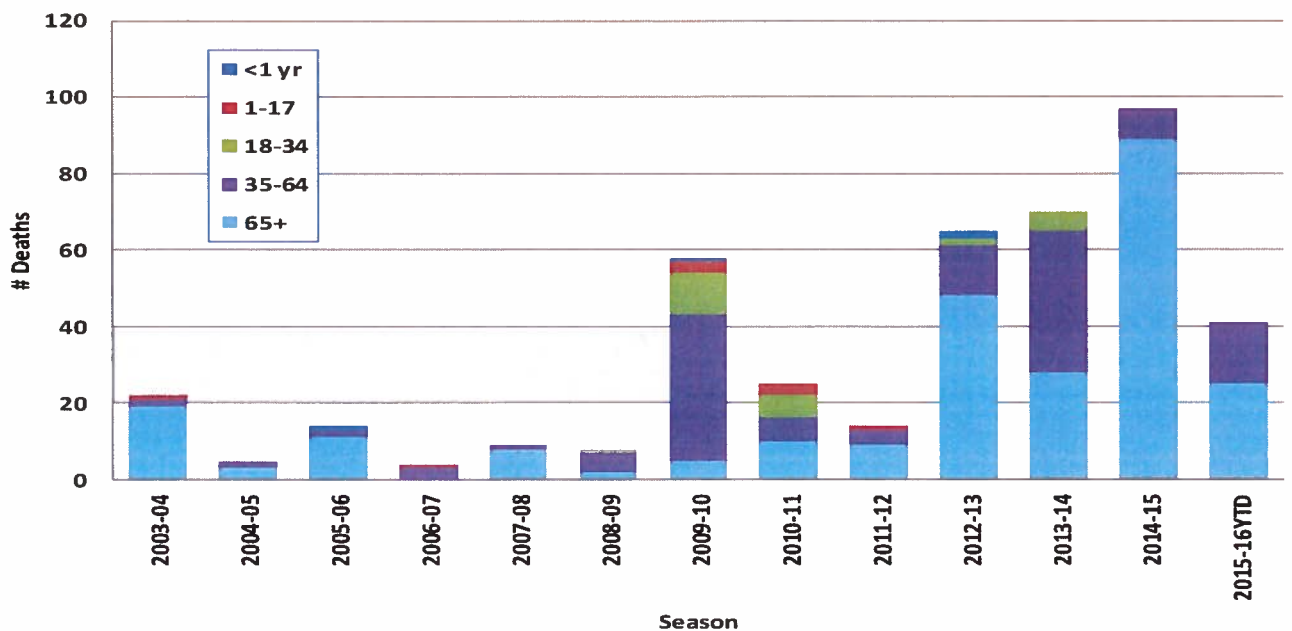
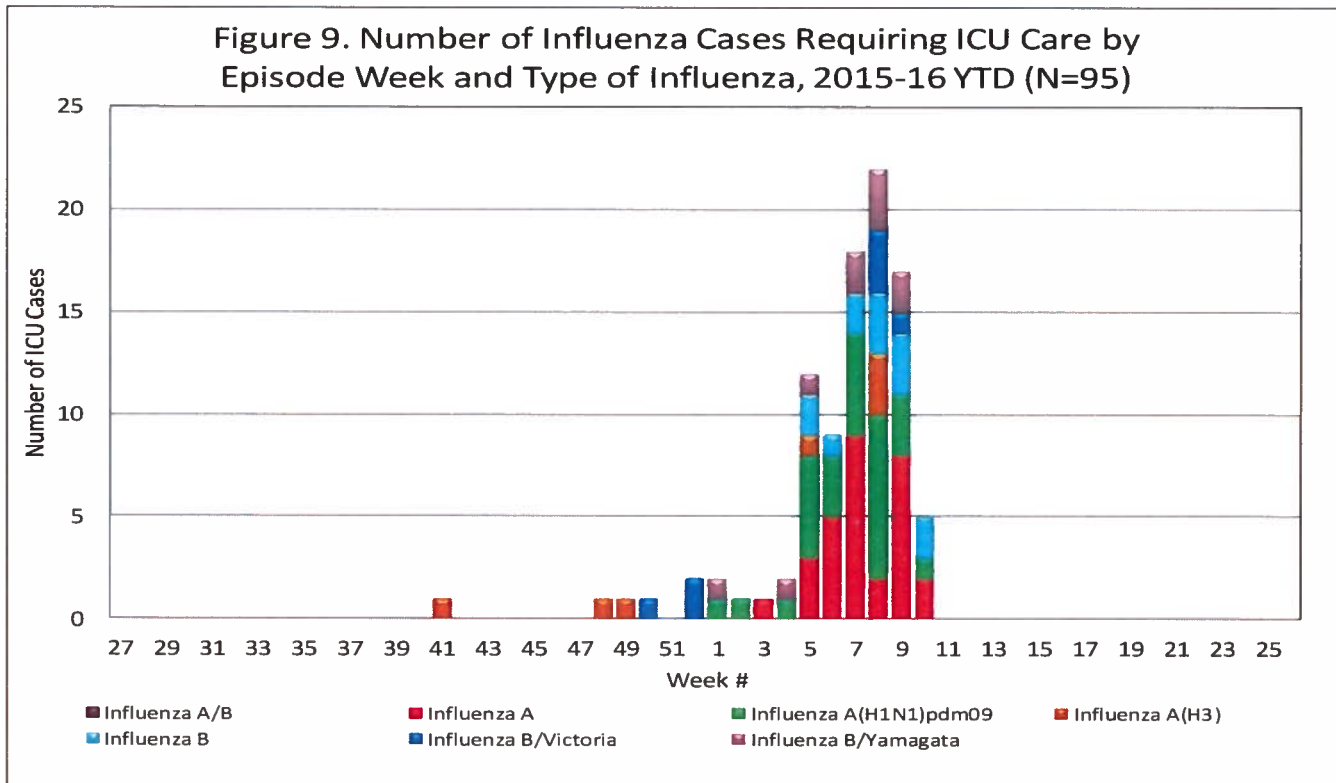


Figure 9. Number of Influenza Cases Requiring ICU Care by Episode Week and Type of Influenza, 2015-16 YTD (N=95)



Episode Week is the Week of Onset, or earliest available date in which the case is identified.

Influenza Reporting in San Diego County

Local providers are encouraged to report laboratory positive influenza detections to the County Epidemiology Program by **FAX (858) 715-6458**. Please fax a [Case Report](#) Form and/or a printed laboratory result, and indicate if patient was admitted to ICU or died, and/or is a resident of a congregate living facility.

For questions regarding sending specimens to Public Health Laboratory (PHL), call (619) 692-8500. Click here for the updated PHL [PCR Test Request Form](#). Contact Epidemiology with any questions at **(619) 692-8499** or by email to: EpiDiv.HHSA@sdcounty.ca.gov.

Resources

County of San Diego Immunization Branch www.sdiz.org

California Department of Public Health [Influenza](#)

CDC Influenza Surveillance [Weekly Report](#)

