



ACCEPT THE GIFT OF A MODULAR LABORATORY FROM
THE COUNTY OF PLACER, AUTHORIZE THE CHAIR TO
SIGN A LETTER OF APPRECIATION, AUTHORIZE
SIGNATURE OF TRANSFER AND REMOVAL AGREEMENT,
AND AUTHORIZE COMPETITIVE SOLICITATION FOR
RELATED COSTS

Health Services Advisory Board Meeting, May 3, 2022

Jeremy Corrigan, DrPH, HCLD/TS(ABB), Director, Agency Operations,
Public Health Services – Laboratory





Mission statement: "Providing quality laboratory services to protect community health and prevent the spread of disease."

- The Public Health Laboratory (PHL) works in conjunction with public health clinics, local hospitals and healthcare providers, and the departments of Epidemiology and Environmental Health.
- By analyzing clinical and environmental samples, the PHL participates in the core activities of surveillance, assessment and assurance.

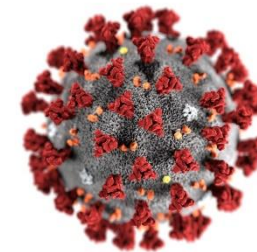


SAN DIEGO COUNTY PUBLIC HEALTH LABORATORY



TYPES OF LABORATORY SERVICES

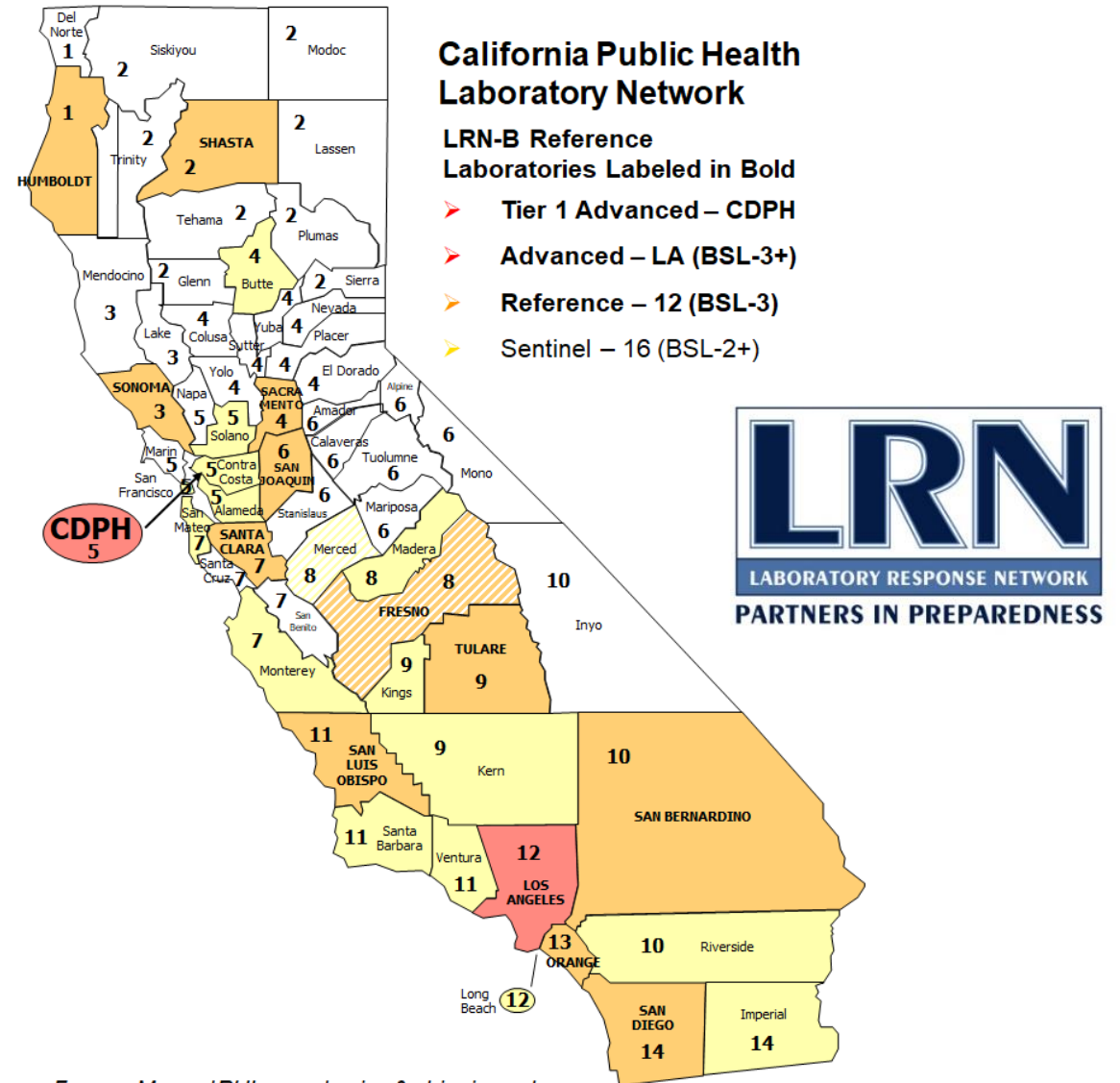
- ENVIRONMENTAL TESTING
 - Drinking water testing
 - Beach water testing
- CLINICAL TESTING
 - Enteric Disease (i.e., salmonella, shigella)
 - STDs (HIV, chlamydia, gonorrhea)
 - Vaccine Preventable Diseases (i.e., measles, mumps)
 - Tuberculosis testing and COVID Testing
- BIOTERRORISM PREPAREDNESS (BSL-3)
 - Clinical and Environmental Samples
 - Detect Select Agents (i.e., anthrax, plague, ricin toxin)



LABORATORY RESPONSE NETWORK



- Created as part of the government bioterrorism response program
- Interconnected system of laboratories
- Provides standardized testing in response to a terrorism event
- Biological and chemical threat preparedness and response



OVERVIEW



- Public Health Laboratory staff moved out of the Health Services Complex on 2/16/22 due to a potential structural issue.
- The *Continuity of Operations Plan* was implemented immediately.
- The County of Placer offered a BSL-3, decommissioned, fully equipped modular laboratory, as a gift to the County of San Diego.





OVERVIEW



- The acceptance of this gift would allow the County to:
 - Resume to **near full BSL-3 capacity**;
 - **Restart Laboratory Response Network (LRN) testing**, which includes testing to prepare and respond to biological and chemical threats; and
 - Allow for **additional space** to bring on **limited, additional testing** including norovirus, measles, and mumps.

INTERIM PLAN

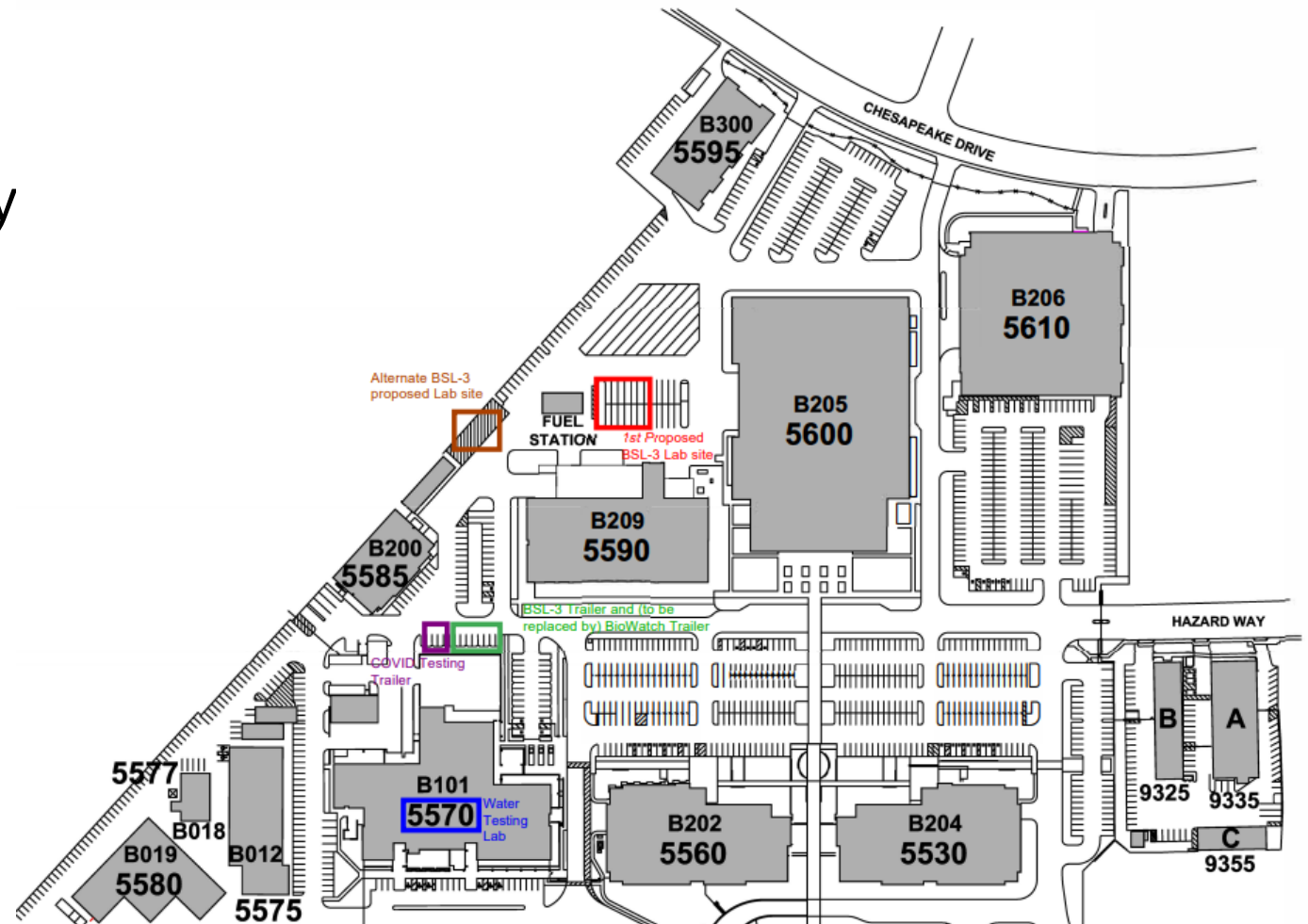


Short-Term

- Place the BSL-3 modular laboratory on the existing County Operations Center (COC).

Long-Term

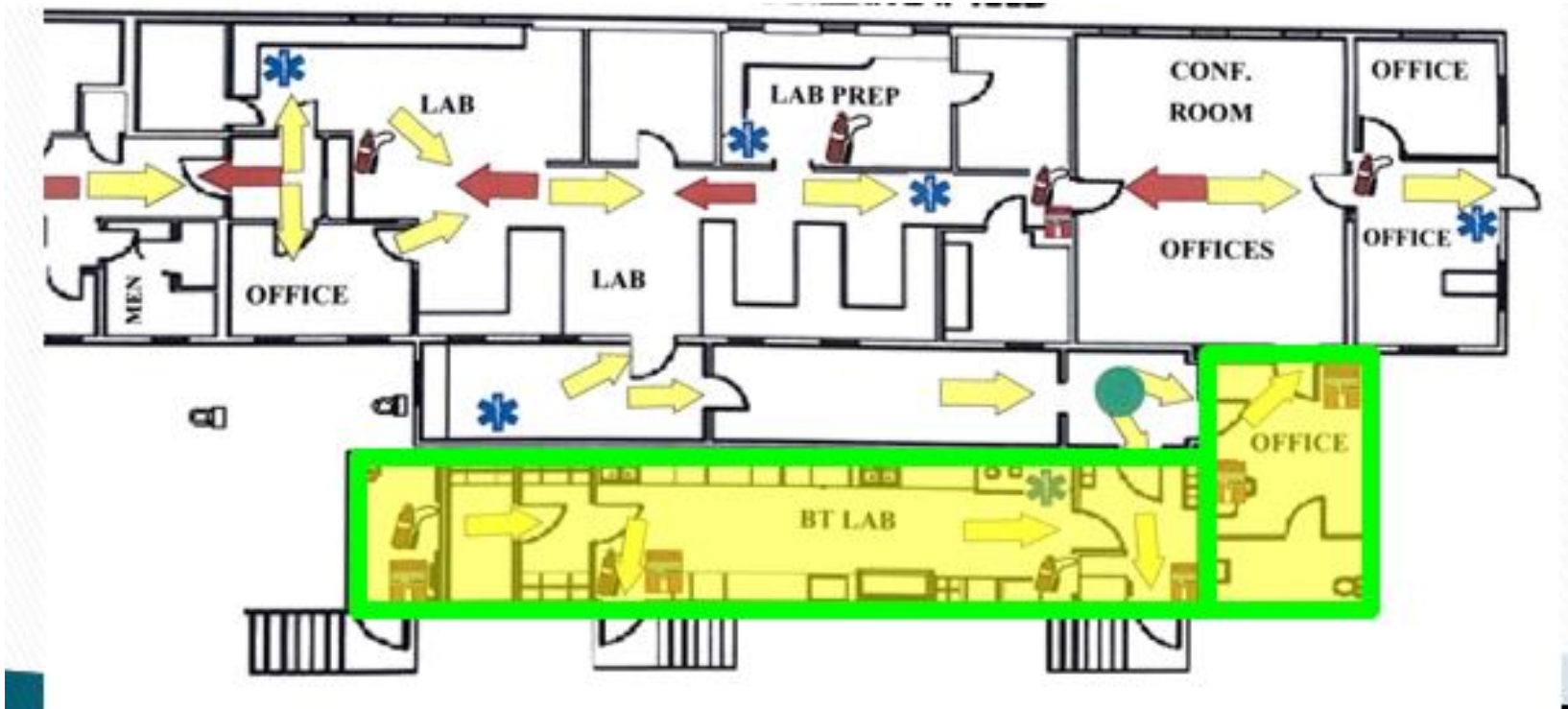
- County's PHL is to construct a new BSL-3 facility, which will take years to design and complete.



BIOSAFETY LABORATORY – TRAILER BREAKDOWN



LIVE WELL
SAN DIEGO



BSL-3 INTERIOR



Interior Space



BSL-3 EXTERIOR



FISCAL IMPACT AND TIMELINE



FY 21-22 Costs:
\$500,000

FY 22-23 Costs:
\$50,000

Deconstruction, transportation, and
reconstruction:
Approximately 3 months

TARGET POPULATION



- PHL will provide testing, sample processing, data collection for outbreaks of contagious diseases such as COVID-19, tuberculosis, hepatitis and more to the communities and population in San Diego County.
- County of San Diego's vision of *Live Well San Diego* and 2022-2027 Strategic Plan Initiatives of **Sustainability (Resiliency)**, **Equity (Health)**, and **Community (Safety)** by protecting the population through continued Public Health Laboratory testing services.



CHALLENGES AND SOLUTIONS



Challenges

Limited resources and space for staff to be able to process various testing

COVID-19 testing van and BLS-3 mobile laboratory are temporary and will need to be returned by end of June 2022

Redirecting testing to contractors and neighboring counties (Orange and Los Angeles Counties)

Solutions

BSL-3 modular laboratory will provide additional space to perform testing for San Diego County

Regain nearly full BSL-3 testing ability and have the space to process non-BSL-3 required testing

The addition of the BSL-3 modular laboratory will allow PHL to reclaim redirected testing back to County



ACCEPT THE GIFT OF A MODULAR LABORATORY FROM
THE COUNTY OF PLACER, AUTHORIZE THE CHAIR TO
SIGN A LETTER OF APPRECIATION, AUTHORIZE
SIGNATURE OF TRANSFER AND REMOVAL AGREEMENT,
AND AUTHORIZE COMPETITIVE SOLICITATION FOR
RELATED COSTS

Health Services Advisory Board Meeting, May 3, 2022

Jeremy Corrigan, DrPH, HCLD/TS(ABB), Director, Agency Operations,
Public Health Services – Laboratory



BOARD LETTER RECOMMENDATIONS



1. Accept the gift of a modular laboratory and its equipment from the County of Placer (valued at over \$1 million).

2. Authorize to sign a letter of appreciation on behalf of the County of San Diego to the County of Placer.

3. Authorize signature of the Transfer and Removal Agreement for the modular laboratory.

4. Authorize signature of the Transfer and Removal Agreement for the modular laboratory.

5. Authorize a Competitive Solicitation for BSL-3 equipment certification and maintenance.