



**BOARD LETTER:
AUTHORIZE ACCEPTANCE OF THE COMMUNITY
PROJECT FUNDING / CONGRESSIONALLY
DIRECTED SPENDING: FACILITIES AND/OR
EQUIPMENT (CPF/CDS) GRANT FUNDING**

Epidemiology and Immunizations Services Branch

Public Health Laboratory

October 1, 2024



Public Health Laboratory



Mission Statement:

Providing quality laboratory services to protect community health and prevent the spread of disease.



Core Activities:

Surveillance, Assessment, and Assurance.



Rendering of new Public Health Laboratory ~
expected Grand Opening April 2025

Community Project Funding / Congressionally Directed Spending (CPF/CDS)



- April 8, 2024, PHL received a notification from HRSA to submit application for CPF/CDS grant.
- Co-sponsored by Senators Padilla and Feinstein
- June 12, 2024, PHL submitted application for CPF/CDS one-time funding of \$2,500,000.
- Funding valid through September 29, 2027.

Benefits and Outcomes



This funding will assist with the new Public Health Laboratory construction project by:

- Improving workflow and surge capacity.
- Purchase additional laboratory and IT equipment, and preventative maintenance service plans.
- Capacity to support Local, State, and Regional efforts to identify, track and respond to emerging infectious diseases.



Plans for the Grant



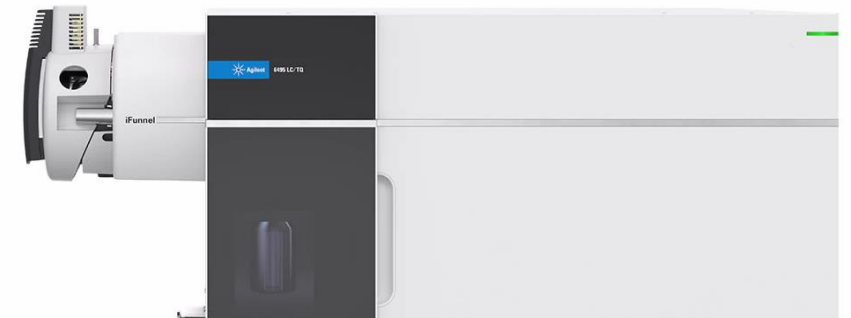
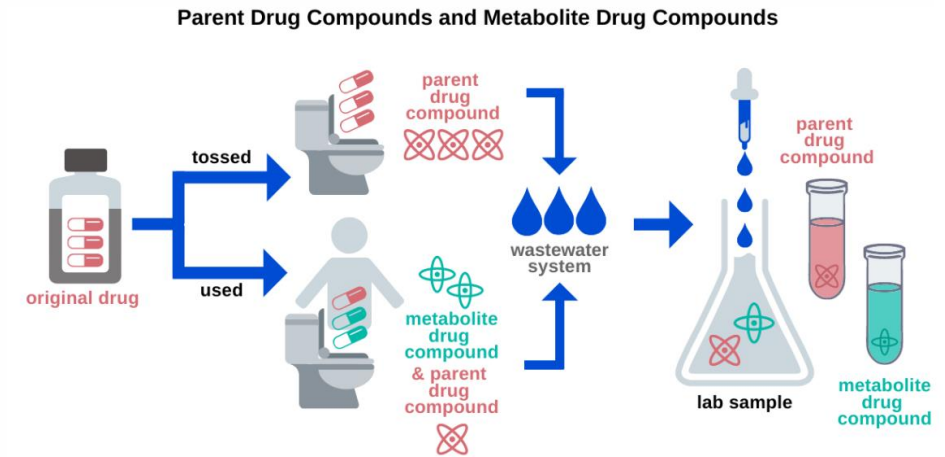
- Moveable Equipment → \$950,000
- Related Equipment Costs (delivery, shipping, warranty, **service contracts**) → \$101,592
- Staff Equipment (IT costs, subscriptions, equipment) → \$530,170
- Laboratory Ancillary Supplies and Equipment → \$904,934



Genomic Epidemiology and Sequencing Team



- Agilent 6495 Triple Quadrupole LC/MS System
 - Mass Spectrometer and Autotrace
- Testing of High-risk substances- (fentanyl, methamphetamine, cocaine, etc.) in wastewater.
 - Inform Public Health Action
- *Future*: Pharmaceutical monitoring, bacterial toxins, emerging contaminants (PFAS)



Critical Equipment for Operations



DiaSorin
Liaison XL



- Automated platform for high-throughput testing
- Screen patients for Tuberculosis - Quantiferon
- Assess vaccine status for measles, mumps and rubella
- Support EPI and Outbreak Investigations

Qiagen
QIAcube HT Extractor



- Automated platform for high-throughput extractions
- More efficient processing of Beach Samples
 - Can do more samples at one time
- Support DNA/RNA extractions in the molecular lab

Water Laboratory – ddPCR and Culture Testing



- Replace and upgrade aging ddPCR equipment
 - Beach Monitoring program testing
- New Incubator
 - Culture testing
- New Autoclave
 - Sterilizes waste, used to make media and sterilize bottles, etc.

ddPCR Equipment



Incubator



Autoclave



SAFETY FIRST!

Recommendations



- Authorize the acceptance of \$2,500,000 from the Health Resources and Services Administration, for the Community Project Funding/Congressionally Directed Spending: Facilities and/or Equipment grant allocation for the period of September 30, 2024, through September 29, 2027.
- Authorize the Agency Director, Health and Human Services Agency, to apply for additional funding opportunity announcements, if available, to support the Public Health Laboratory.

Contact



For additional information, contact:

Matthew Lui, Matthew.Lui@sdcounty.ca.gov or (619) 366-7862

Dr. Jeremy Corrigan, Jeremy.Corrigan@sdcounty.ca.gov or (619) 339-9883



**BOARD LETTER:
AUTHORIZE ACCEPTANCE OF THE COMMUNITY
PROJECT FUNDING / CONGRESSIONALLY
DIRECTED SPENDING: FACILITIES AND/OR
EQUIPMENT (CPF/CDS) GRANT FUNDING**

Epidemiology and Immunizations Services Branch

Public Health Laboratory

October 1, 2024



Laboratory Services Provided



TYPES OF LABORATORY SERVICES

■ ENVIRONMENTAL TESTING

- Drinking water testing
- Beach water testing – ddPCR and Culture

■ CLINICAL TESTING

- Enteric Disease (e.g., Salmonella, Shigella, STEC)
- STDs (HIV, chlamydia, gonorrhea)
- Vaccine Preventable Diseases (i.e., measles, mumps)
- Tuberculosis testing and COVID Testing

■ BIOTERRORISM PREPAREDNESS (BSL-3)

- Clinical and Environmental Samples
- Detect Select Agents (i.e., anthrax, plague, ricin toxin)

■ OTHER

- BioWatch Program – Environmental Air Sampling
- Rabies and Sequencing

