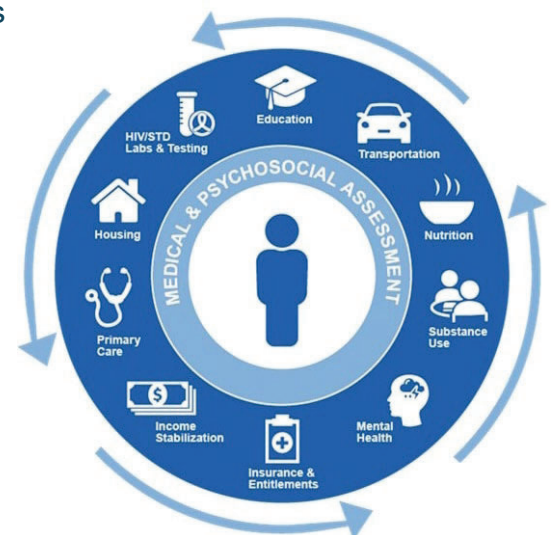


HRSA Status Neutral and Whole Person Care Approaches – Implementation Update

Lynn Carson
September 25, 2024

Project Overview

- Develop, implement, and evaluate whole person strategies within Ryan White HIV/AIDS Program (RWHAP) Part A jurisdictions for racial and ethnic minority subpopulations who need HIV prevention services.
 - Ensures both people with HIV and vulnerable to HIV have access to a spectrum of tools and services to support overall health and wellbeing, such as housing support, mental health care, etc.
- Focus on the prevention pathway and apply it to people who test negative for HIV and are at substantial risk for HIV in order to assist in improving access to needed services.
- Funding source: HRSA-23-126 - Status Neutral Approach to Improve HIV Prevention and Health Outcomes for Racial and Ethnic Minorities – Implementation Sites





Project Activities

- Expand Ryan White Program Non-medical Case Management Services (NMCM) framework to individuals who are HIV negative leveraging existing infrastructure.
- Develop, implement, and evaluate Social Networking Strategy (SNS) that aligns with Centers of Disease Control and Prevention SNS recommendations and guidance.
- Update HIV Service Standards to align with whole person care practices.
 - Translating how existing tools, such as integrated care plans and risk assessment tools, could be redirected to assist people who are HIV positive, HIV negative and/or unaware of their status.
 - Introducing comprehensive HIV prevention approaches into an existing HIV care system that includes case management, behavioral health, and housing services.



Non-medical Case Management

- Ensures both people with HIV and vulnerable to HIV have access to a spectrum of tools and services to support overall health and wellbeing, such housing support, mental health care, etc.
- Develops critical service pathways for people vulnerable to HIV who would benefit from the more robust supportive services currently available to people with HIV through Ryan White.
- To implement, we will be partnering with a local organization currently funded to perform Ryan White NMCM to expand services to individuals vulnerable to HIV.
- Technical assistance provider JSI will be conducting evaluation of the activity.



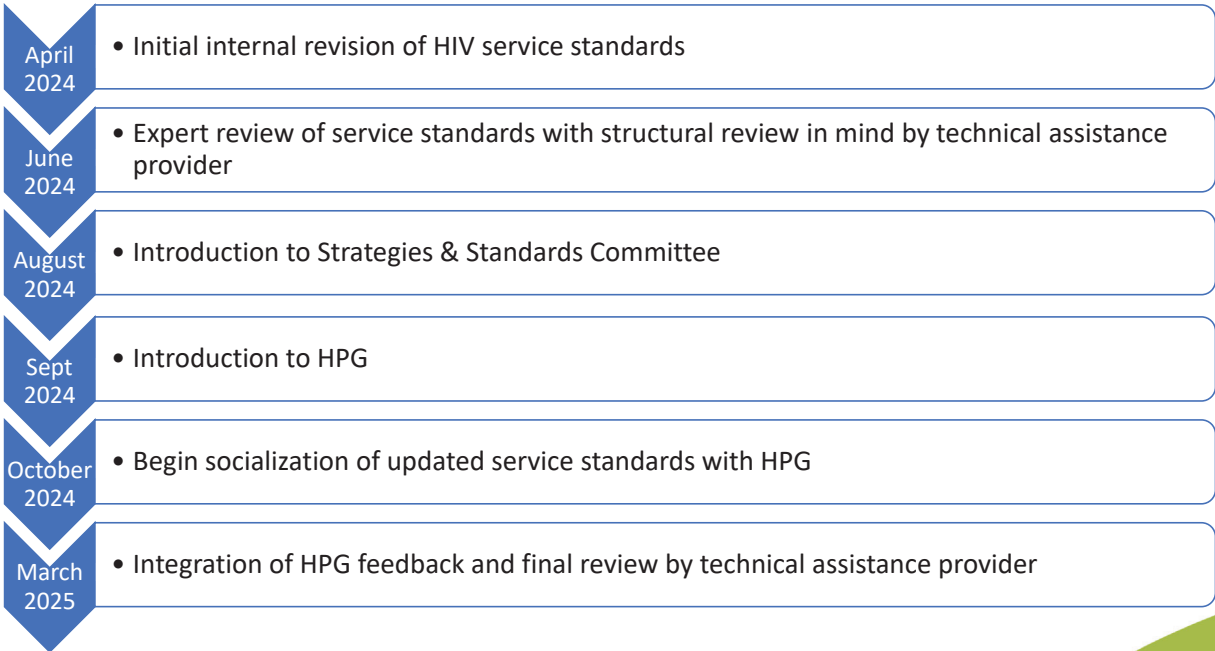


Social Networking Strategy

- SNS helps to identify, engage, and motivate people who are unaware of their status to accept HIV testing and engage in available care and prevention services.
- It is an evidence-based strategy founded on two principles:
 - People in the same social network share the same behaviors that increase the chances of getting or transmitting HIV; and
 - People in the same social network know and trust each other.
- To implement, we are partnering with a local organization to identify and work with members of focus population, who will serve as recruiters in their social networks.
 - They will work with the NMCM-funded organization to connect individuals to services.
- The local organization will also be conducting evaluation of the activity.



HPG Service Standards Timeline



Role of HIV Planning Group



- Review of changes
- Discussion of barriers, challenges, and misgivings
- Inclusion of status-neutral approach in HPG work plan
- Eventual adoption of updated service standards reflecting status-neutral approach



Questions?

