

**Housing for Individuals and Families
Experiencing Homelessness:
System Overview and Unique Programs
for Clients Diagnosed with HIV/AIDS**





January Miller
Resident Services Coordinator



Mark Seymour
Case Manager, PSH



How do you interact with the Homeless Services System in your role?

How familiar are you with Townspeople programs?

About Us



STARTED IN 1984

A group of friends & concerned San Diegans united during the onset of the HIV/AIDS epidemic

1994

Opened the first HIV/AIDS Permanent Supportive Housing in San Diego

TO DAY

HOPWA Emergency Housing Program
NEW HOPWA Housing Navigation Program
Permanent Supportive Housing
Wrap Around Supportive Services

Homeless System Overview

Access Sites and Outreach



Emergency Housing

Transitional Housing



Permanent Housing

Access Sites & Outreach

*Starting Points for accessing
services*

Coordinated Entry System (CES) Access Sites

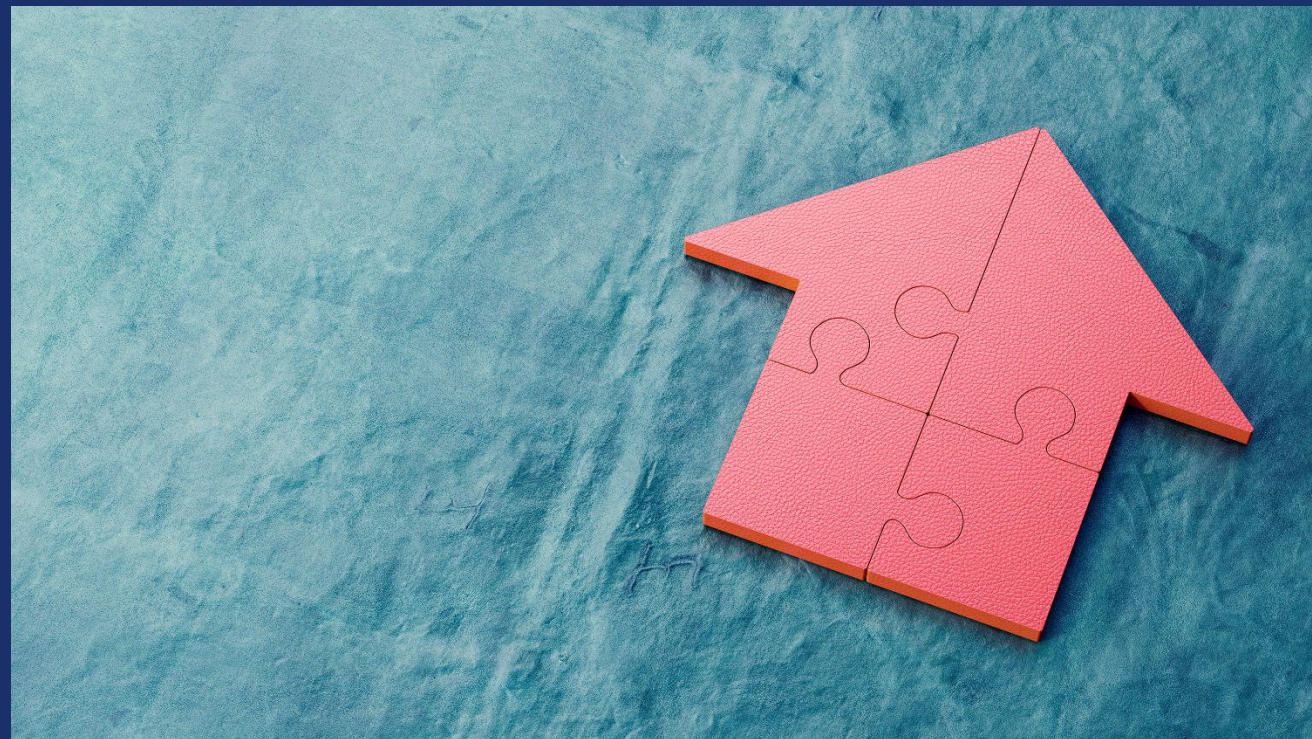
Homelessness Response Center

Outreach Workers

211 San Diego

Other Service Providers (ex. Medical Case
Managers)

Emergency Housing



Short Term-Typically 30-90 days

Emergency Shelters

Hotel/Motel Voucher Programs

Safe Parking Lots

New Safe Camping areas

Townspeople Programs

Emergency Housing



Housing Navigation

Permanent Housing



Shared Housing

HOPWA EMERGENCY HOUSING PROGRAM



- Hotel Voucher Program, max 30 days (dependent on current funding)
- We partner with hotels around San Diego County
- Supportive Services provided with weekly follow-up, coordination of care

- Referral process:
 - Email referral@townspeople.org
 - Must be HIV+
 - Actively Experiencing Homelessness

HOPWA Housing Navigation



- Helps clients navigate the complex housing system to permanent housing.
- Client Centered, many different housing options
- Referral process:
 - Email referral@townspeople.org
 - Must be HIV+
 - Actively Experiencing Homelessness

PERMANENT SUPPORTIVE HOUSING



4 Townspeople -owned
properties + scattered site
community units



On-site Supportive Services
provided, including housing
case management

Variety of Housing Programs
and different types of
funding



All referrals come from
Coordinate Entry System.
Eligibility Criteria different
based on the available unit

Shared Housing



- Model is based on client choice:
 - Split lease
 - Own bedroom, shared common areas
 - Choice of housemates
- Developed a Shared Housing Online Portal as tool for finding compatible housemates
- Partnering with existing Landlord Engagement programs for housing location services and financial incentives

HIV/ AIDS Resources



Medical Case Management:

- UCSD Owen Clinic
- UCSD Mother Child Adolescent Program
- Family Health Centers San Diego HIV Services
- San Ysidro Health- CASA and Our Place
- Christie's Place (for women)
- Neighborhood House Association Coordinated HIV Services
- VA

Other Resources:

- The Center
- County HOPWA Section 8

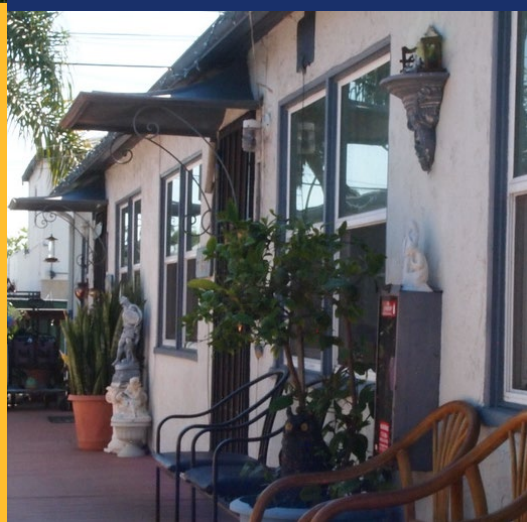
Questions?

Contact

Stacey Drew- Director of Supportive Services
stacey@townspeople.org

Referrals to Emergency Housing & Housing Navigation:
referral@townspeople.org

Shared Housing General Questions:
sharedhousing@townspeople.org



Resources

CES Access sites

https://www.rtfhsd.org/wp-content/uploads/CES-Access-Sites_SD-County-1.pdf

HRC website

<https://www.sdhc.org/homelessness-solutions/hrc/>

Housing Choice Voucher info

<https://www.sdhc.org/housing-opportunities/help-with-your-rent/> - San Diego Housing Commission, City

<https://www.sandiegocounty.gov/content/sdc/sdhcd/hopwa.html> - San Diego County- HOPWA

Shelter referral info, safe parking, safe camping

<https://www.jfssd.org/our-services/adults-families/safe-parking-program/>

<https://www.sandiego.gov/department/safe-sleeping-program>