



County of San Diego, Health and Human Services Agency

# *CENTRAL AND SOUTH REGION*

## LEADERSHIP TEAM OVERVIEW

---

Barbara Jiménez, MPH

Director of Regional Operations

*Health and Human Services Agency-Central & South Regions*

September 14, 2017



# OUR VISION



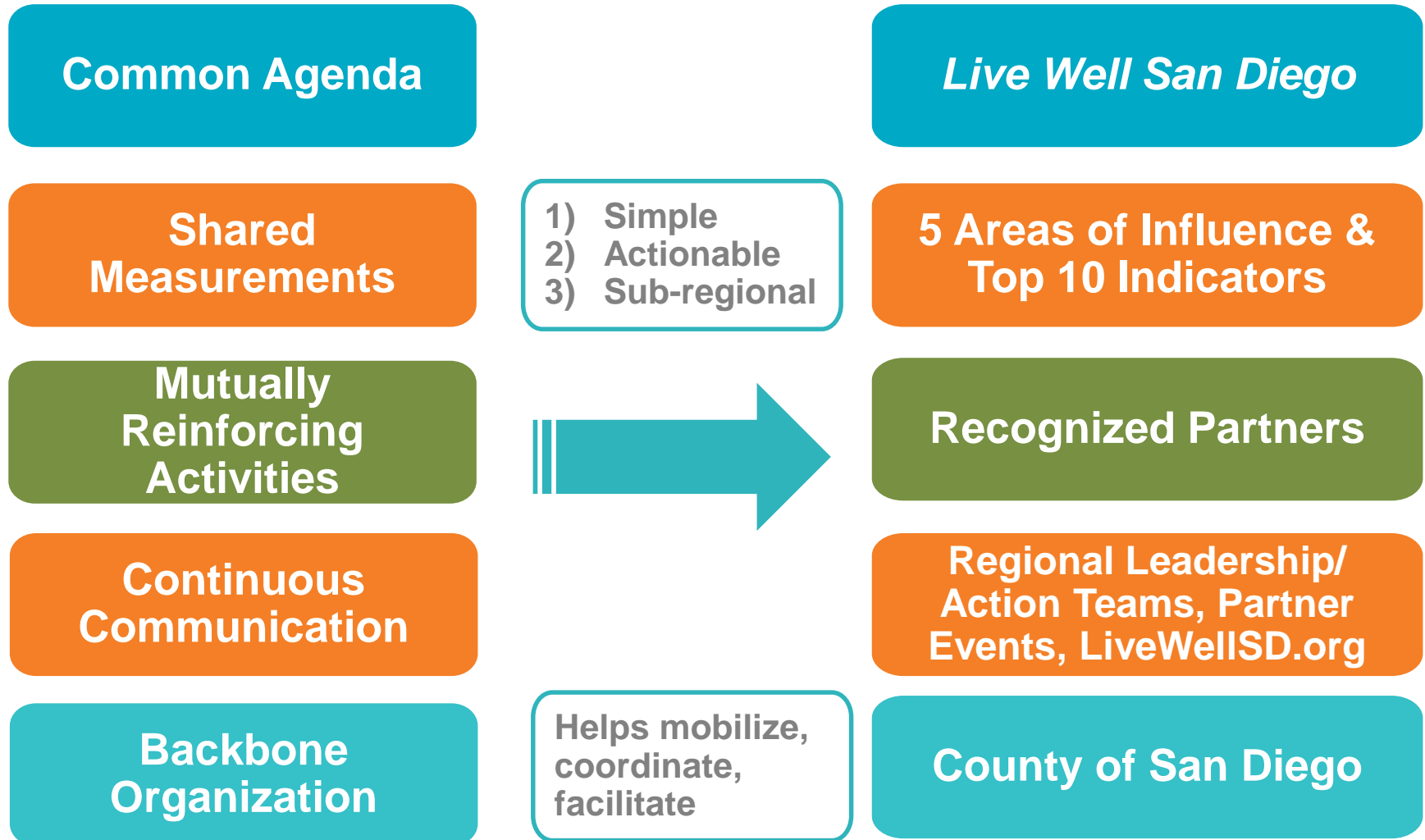
**LIVE WELL**  
SAN DIEGO

Building  
Better  
Health

Living  
Safely

Thriving

# 5 CONDITIONS OF COLLECTIVE IMPACT

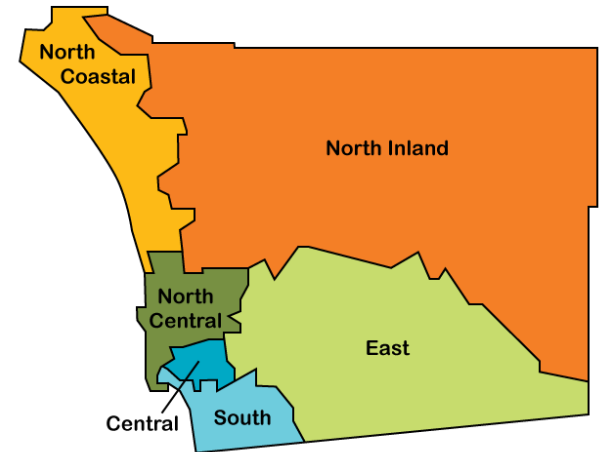




## Regional Structure within HHSA:

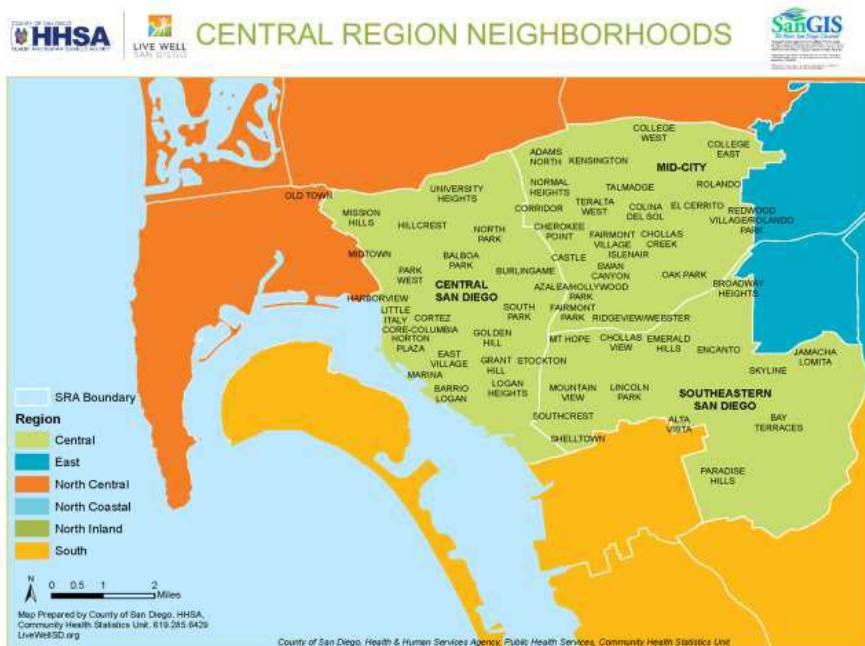
Under the leadership of Agency Director, **Nick Macchione**, the six regions within HHSA are overseen by three Regional Directors.

- **Barbara Jiménez**  
Director, Central & South Regions
- **Chuck Matthews**  
Director, North Coastal & Inland Regions
- **Kimberly Gallo**  
Director, East & North Central Regions



The county of San Diego is divided into six Health and Human Services Agency regions based on zip code.

# CENTRAL REGION



- 1 in 6 San Diegans live in Central Region (2014)
- Nearly 3 in 10 families with children living in poverty (2014)
- Over 29% of residents are foreign-born (2013)
- Southeastern San Diego 3-4-57 (2013)



## Leadership Team Structure

3 co-chairs

- **Health:** Barbara Jiménez, Regional Director, Central & South Regions
- **Safety:** Adolfo Gonzales, Chief of Probation
- **Thriving:** Barry Pollard, Executive Director of The Urban Collaborative Project





## Let's Connect Expo/Grandparents Raising Grandchildren



# LIVE WELL SAN DIEGO CENTRAL REGION LEADERSHIP TEAM - ACHIEVEMENTS



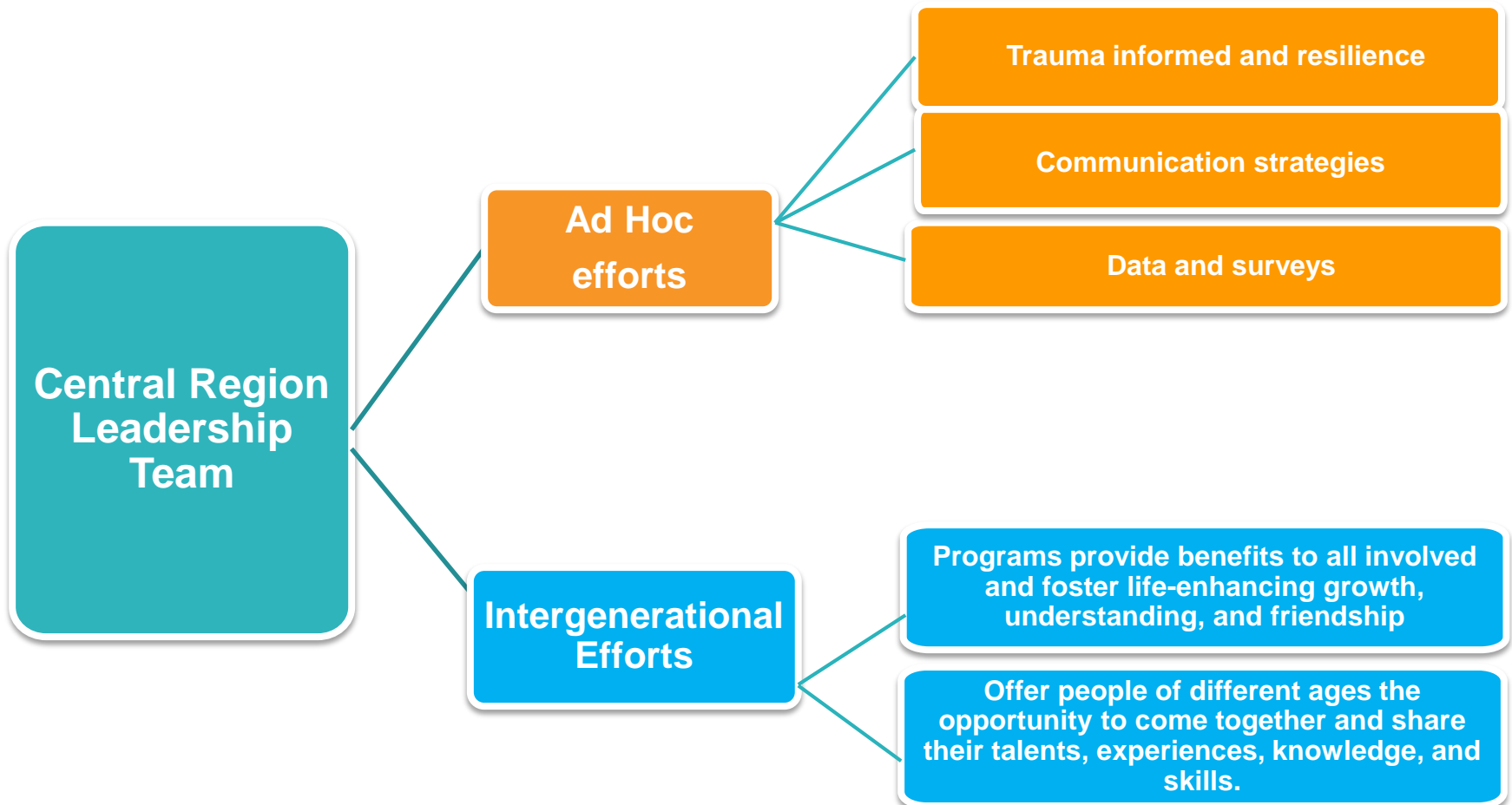
LIVE WELL  
SAN DIEGO

## Healthiest Cities & Counties Challenge/*Resident Leaders in Action*



HEALTHY  
COMMUNITY 50  
SAN DIEGO COUNTY,  
CALIFORNIA





# SOUTH REGION



- 1 in 7 San Diegans live in South Region (2013)
- Nearly 1 in 5 families with children are below poverty level
- 3 in 5 South Region residents are Hispanic (2013)
- South Region 3-4-59 (2013)



## Leadership Team Structure

2 co-chairs

- Barbara Jiménez, Regional Director, Central & South Regions
- Kathryn Lembo President/CEO, South Bay Community Services





## communities of excellence 2026

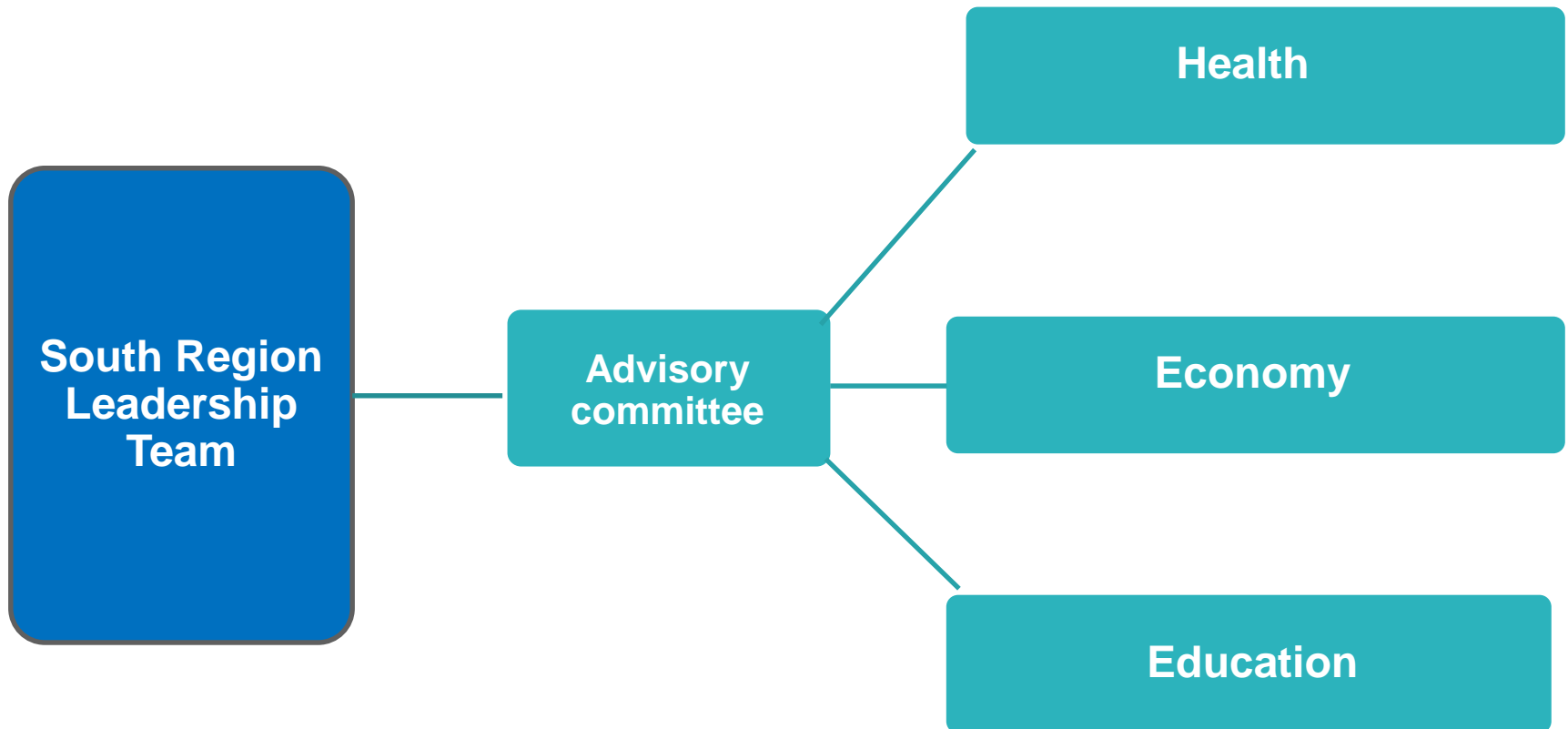
- Journey from great to excellent
- Two-year pilot
- South region





## Thriving Summit/Let's Connect Expos







# *QUESTIONS?*

---

