



WORKPLACE JUSTICE FUND

Frequently Asked Questions

WHAT IS THE WORKPLACE JUSTICE FUND?



The Fund provides financial assistance to workers who have a legal judgement in their favor and have been unable to collect. The judgements covered by the Fund are limited to judgements that are the result of a favorable Order, Decision, or Award (ODA) from the California Labor Commissioner's Office.



A limited number of eligible workers can receive up to \$3,000 from the Fund and the County will work to recover money from the employer.



The Workplace Justice Fund can also assist workers who are retaliated against by their employer for filing a complaint with OLSE under an ordinance OLSE enforces.



WHO IS ELIGIBLE?

An eligible worker must be all 3 of the following:

1. A resident of San Diego County or worker of an employer doing business in the County.
2. A worker who has a legal judgment from winning a favorable decision from the San Diego office of the California Labor Commissioner's Office that ordered the employer to pay money. The decision must have been issued on or after May 2020.
3. Unable to collect the judgment from their employer despite multiple attempts.



*Workers who meet the eligibility requirements are not guaranteed to be selected for financial assistance through the Workplace Justice Fund





WORKPLACE JUSTICE FUND

Frequently Asked Questions



WHAT DO I NEED TO DO?

If you believe that you are an eligible worker, please contact OLSE at:

olse@sdcounty.ca.gov



OR

619-531-5129

After reviewing eligibility requirements, you will attend a meeting with OLSE staff where we will provide additional information about how the program works and answer any questions you might have.



IF I AM SELECTED TO BE PART OF THE PROGRAM, WHAT COMES NEXT?

You will complete paperwork to assign the judgment to the County.

After the assignment, the County will provide you a check for up to \$3,000.

The County will attempt to collect the amount of the judgment from the employer. If the County collects from the employer, the amount you received from the County will go back to the Fund. If the County collects over \$3,000, you will receive the additional amount.





WORKPLACE JUSTICE FUND

Frequently Asked Questions

IF I AM SELECTED TO PARTICIPATE FOR THIS PROGRAM, WHAT TYPE OF PAPERWORK WILL I NEED TO COMPLETE?



A program application.

An Agreement with the County.

An “Assignment of Judgment Form” that will assign the judgment to the County.

A W-9 tax Form.

Provide copies of California ID and Social Security Number or Individual Tax Identification Number (ITIN).



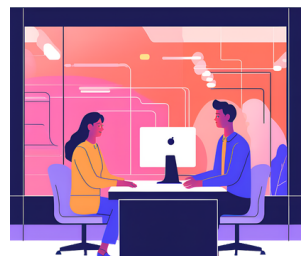
DO I HAVE TO PAY FOR THESE SERVICES?

No. The County will pay you the amount owed to you by the employer up to a maximum of \$3000. If the employer does not pay the amount of the judgment owed, you will not be required to repay the County.



WHATEVER MONEY I RECEIVE, IS IT CONSIDERED INCOME?

You should consult with a tax professional regarding this question. Depending upon the underlying basis for the judgment, you may be required to report it as income on your taxes, as the County will be issuing a Form 1099 for any payment issued to you by the County.





WORKPLACE JUSTICE FUND

Frequently Asked Questions

HOW CAN I CONTACT OLSE FOR GENERAL QUESTIONS?

General information is available on the website:
<https://www.sandiegocounty.gov/OLSE.html>

By phone: 619-531-5129

By email: OLSE@sdcounty.ca.gov

