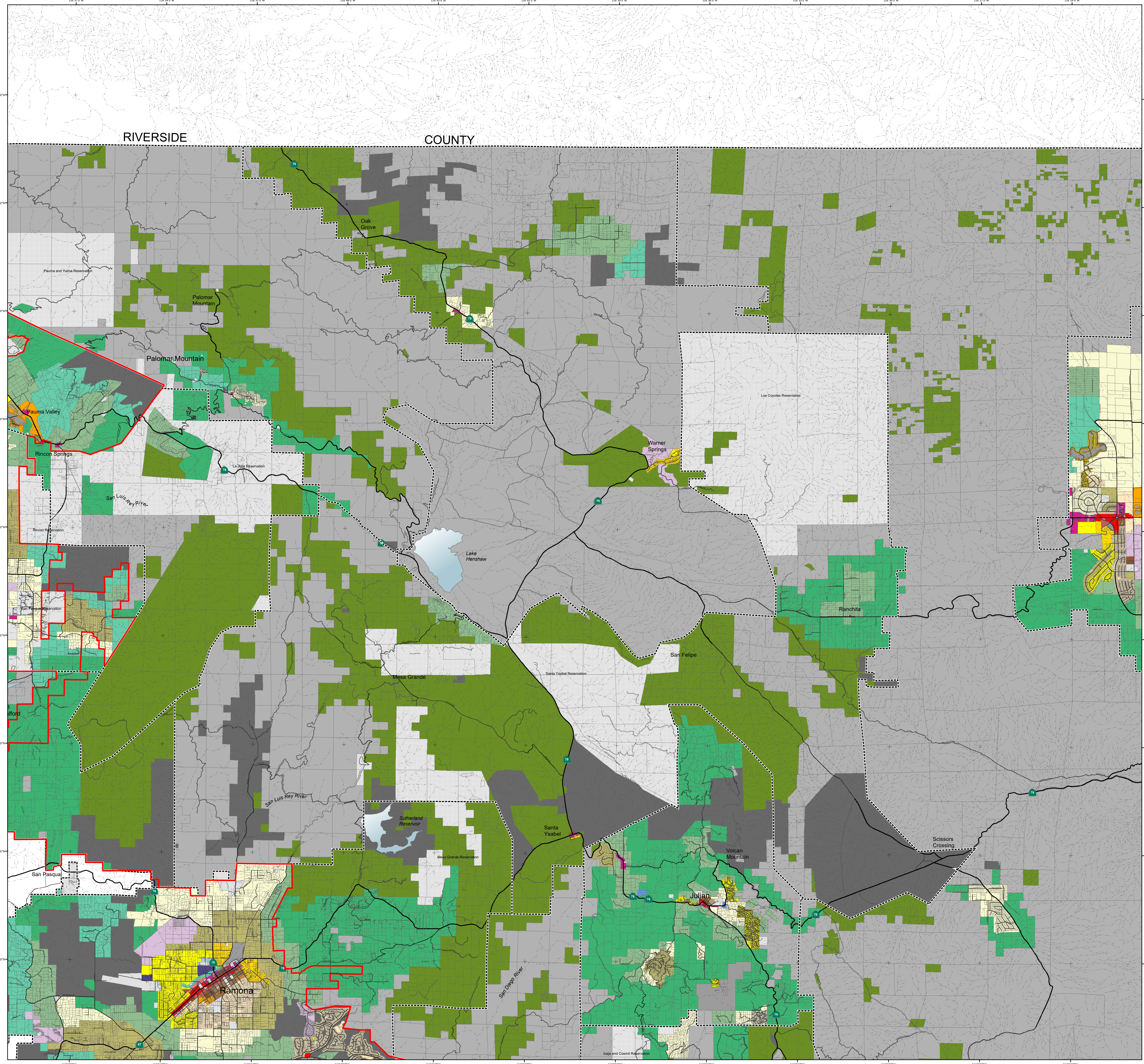


North Mountain

Subregional Planning Area



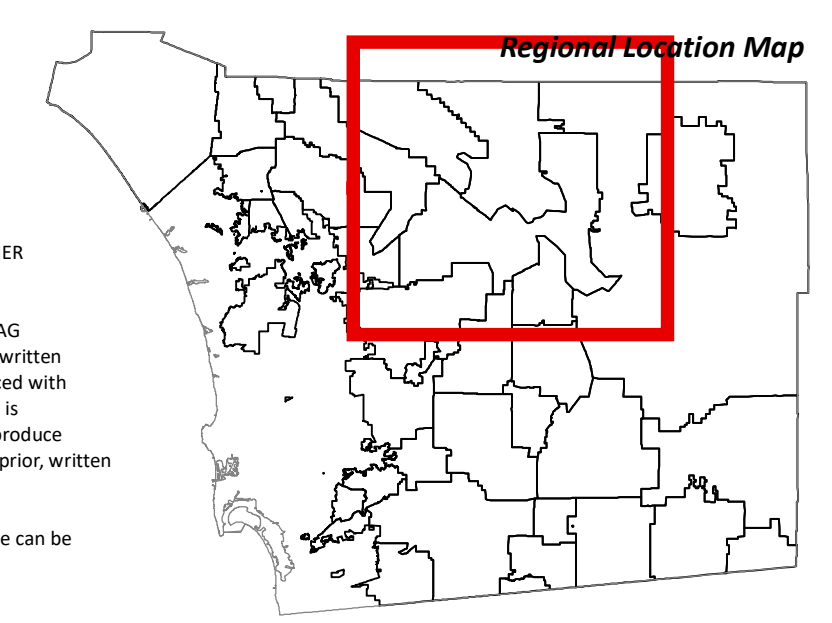
General Plan Land Use Designations^{1,2}

- Village Residential (VR-30)
- Village Residential (VR-24)
- Village Residential (VR-20)
- Village Residential (VR-15)
- Village Residential (VR-10,9)
- Village Residential (VR-7,3)
- Village Residential (VR-4,3)
- Village Residential (VR-2,9)
- Village Residential (VR-2)
- Semi-Rural Residential (SR-5)
- Semi-Rural Residential (SR-1)
- Semi-Rural Residential (SR-2)
- Semi-Rural Residential (SR-4)
- Semi-Rural Residential (SR-10)
- Rural Lands (RL-20)
- Rural Lands (RL-40)
- Rural Lands (RL-80)
- Specific Plan Area⁴
- Office Professional³
- Neighborhood Commercial³
- General Commercial³
- Rural Commercial³
- Limited Impact Industrial³
- Medium Impact Industrial³
- High Impact Industrial³
- Village Core Mixed Use
- Public/Semi-Public Facilities³
- Public/Semi-Public Lands (Solid Waste Facility)
- Public Agency Lands
- Tribal Lands
- Open Space (Recreation)
- Open Space (Conservation)
- Subject to Specific Plan Regulations⁴
- County Water Authority Boundary
- Planning Area Boundary

- NOTES:**
- 1: The type and intensity of development depicted on the map must be implemented in accordance with General Plan goals and policies and other County regulations which may further affect the type and intensity of use.
 - 2: Land Use Element, Table LU-1 indicates the applicable Regional Category for each designation.
 - 3: Maximum development intensity for non-residential designations is provided in Land Use Element, Table LU-1.
 - 4: Refer to Community Plan for general land uses and intensities allowed in Specific Plan area (SPA).

Map Prepared By:
LUFGIS
 Land Use & Environmental Group - Geographics & Remote Sensing

Coordinates: NAD83 Feet
 THIS MAP/DATA IS PROVIDED WITHOUT WARRANTY OF ANY KIND, EITHER EXPRESS OR IMPLIED, INCLUDING BUT NOT LIMITED TO, THE IMPLIED WARRANTIES OF MERCHANTABILITY AND FITNESS FOR A PARTICULAR PURPOSE. Note: This product may contain information reproduced with permission granted by Rand McNally & Company to SARGIS. This map is copyrighted by Rand McNally & Company. It is intended to copy or reproduce all or any part thereof, whether for personal use or resale, without the prior written permission of Rand McNally & Company.
 Copyright SARGIS 2017 - All Rights Reserved. Full text of this legal notice can be found at: http://www.sargis.org/Legal_Notice.htm



20
 ACRES

0 6,000 12,000 24,000
 Feet

Map Date: 5/24/2024

Source: County of San Diego, SARGIS, SANSDIG
 Document Path: S:\land_use\lupupdate_map\official_map\mof\new_general_plan_atlas.mxd