

Hidden Meadows Community Sponsor Group

Covering the area bordered by Escondido, 1-15, Valley Center, & Circle R

Meeting location: The Hidden Meadows Community Center 28208 Meadow Glen Way West
Thursday, February 27, 2025 at 7:00 p.m.

FINAL AGENDA

<p>Assistance for those with disabilities: If you need accommodation to participate in this meeting, please call Bret Sealey at 619-808-3020 so necessary arrangements can be made.</p>
--

(Please note that persons desiring to speak on any action or information item are requested to fill out a speaker slip, available from the Secretary.)

- 1) CALL TO ORDER: Bret Sealey, Chair
- 2) ROLL CALL: Quorum establishment
- 3) PLEDGE OF ALLEGIANCE
- 4) MINUTES
 - a) *Approval of minutes from January 23, 2025
- 5) OPEN FORUM: attendees may speak on any subject not covered by this Agenda
(Time limit – 3 minutes per speaker)
- 6) ACTION ITEMS
 - a) *Establishment of a stop sign at the intersection of Forest Drive and Kaywood Drive. A stop control is to be placed facing westbound traffic on Forest Drive. The location meets the necessary criteria as defined in §72.101 of the San Diego County Code and therefore has been deemed appropriate to be signed by the Department of Public Works.
 - b) *Draft Environmental Impact Report for the San Diego County Socially Equitable Cannabis Program (SCH #2023090330). The Draft EIR identifies and studies potential impacts to the environment from the proposed Cannabis Program, while evaluating ways to avoid or reduce impacts.
 - c) *Application by Edward Van Liew to serve as a member of the Hidden Meadows Community Sponsor Group.
- 7) ADMINISTRATIVE ITEMS/CORRESPONDENCE
 - a) Status of vacancies and appointment recommendations
 - i) Seat #1 – Michael Richman recommended
 - ii) Seat #6 – Robert Riha recommended
 - iii) Seat #7 – Vacant
 - iv) Seat #8 – Vacant

- v) I-15 Corridor Design Review Board Seat #3 – Vacant
- b) Compliance requirements update
 - i) Annual training
 - ii) Form 700
 - iii) Bi-annual ethics training
- 8) SUB-COMMITTEE REPORTS
 - a) Trails & Parks
- 9) MEMBERS' COMMENTS
- 10) AJOURNMENT

* Denotes Attachment

Next regular meeting will be on March 27, 2025, at the Hidden Meadows Community Center, 28208 Meadow Glen West. If this agenda is further revised, it will be posted 3 days prior to the meeting on the community web site: <https://www.sandiegocounty.gov/content/sdc/pds/gpupdate/comm/hidmdws.html>. A final agenda may include additional items if added more than 72 hours prior to the meeting. For further information, contact the Chair.

Public Disclosure

We strive to protect personally identifiable information by collecting only information necessary to deliver our services. All information that may be collected becomes public record that may be subject to inspection and copying by the public, unless an exemption in law exists. In the event of a conflict between this Privacy Notice and any County ordinance or other law governing the County's disclosure of records, the County ordinance or other applicable law will control.

At the discretion of the Sponsor Group, all items appearing on this agenda, whether or not expressly listed for action, may be deliberated and may be subject to action by the Sponsor Group. All public records relating to an agenda item are available for public inspection at the time they are available to Sponsor Group members. Please contact Bret Sealey at 619-808-3020 or bret@bretsealey.com for a copy of those items (identified on the agenda with an asterisk).

Hidden Meadows Community Sponsor Group

Covering the area bordered by Escondido, 1-15, Valley Center, & Circle R

Thursday, Jan 23, 2025 at 7:00 p.m.

DRAFT MINUTES

- 1) CALL TO ORDER: Bret Sealey, Vice Chairman, 7:00 PM
- 2) ROLL CALL: Delin, Michalowski, Chagala, Sealey, Cook, present. Quorum established.
- 3) PLEDGE OF ALLEGIANCE TO THE FLAG OF THE UNITED STATES OF AMERICA
- 4) MINUTES: Motion to approve minutes of Nov 7, 2024, Chagala, Seconded Delin, Motion passes 5 yea, 0 nay
- 5) OPEN FORUM: attendees may speak on any subject not covered by this Agenda.
No members of the public make comments
- 6) ACTION ITEM: Bret Sealey elected Chairman, Jim Chagala elected Vice Chairman, Joe Michalowski elected Secretary, all on 5 yea 0 nay vote
- 7) ADMINISTRATIVE ITEMS: Milo ??Name, Ed Van Liu, suggested to replace open positions of Hogan, and Brower, who have resigned
- 8) SUB COMMITTEES: No Action
- 9) MEMBER COMMENTS:
 - a) Cook, apparently Hidden Meadows Winery intends to build multiple ADU units on the property we reviewed with owners in November. Owners had not mentioned such intent to the group.
 - b) Delin, asks to have Neil Steinbeck present ??? to group. Former Chair Hogan had not followed up. Group does want to have Mr. Steinbeck present.
 - c) Michalowski, asks for follow up regarding coordination of traffic lights at intersections of Hidden Meadows/Center City Pkwy, Hidden Meadows/I15 off/on ramps, and Deer Springs Road/??Road name
 - d) Chagala, asks to look into sidewalk/gravel at intersection of Hidden Meadows/Center City Pkwy
- 10) ADJOURNMENT: Sealey motions, Delin seconds, passes 5 yea, 0 nay, Meeting ends 7:21pm



PUBLIC WORKS

5510 OVERLAND AVENUE, SUITE 410, SAN DIEGO, CALIFORNIA 92123-1237
(858) 694-2212

MURALI PASUMARTHI
DEPUTY DIRECTOR

October 23, 2024

SEC. 72.101. ESTABLISHMENT OF STOP SIGNS AT STOP INTERSECTIONS

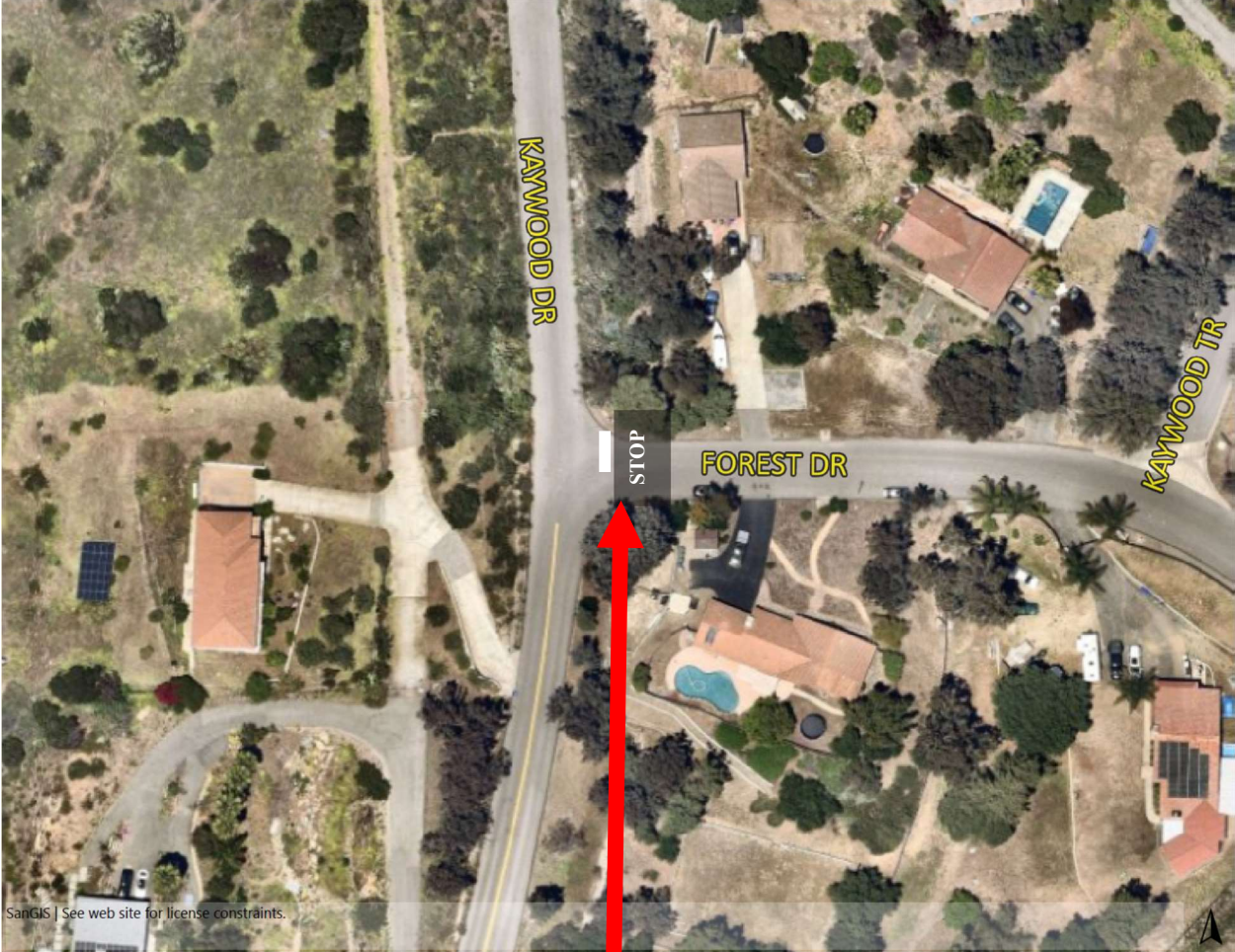
The Road Commissioner shall erect and maintain stop signs in compliance with the provisions of the Vehicle Code at the entrance to every intersection where a Civil or Traffic Engineer licensed by the State of California has determined traffic safety and/or intersectional operation will be enhanced, the proposed stop control shall be supported by a safe approach speed of less than 5 MPH and the Community Planning/Sponsor Group (where applicable). If there is opposition to the proposed stop control, the matter will be reviewed by the San Diego County Traffic Advisory Committee as a full item and a recommendation will be submitted to the Board. The Board can then determine if there is special hazard to life or property by reason of the volume of traffic at such intersection, or because of the lack of visibility to the drivers of vehicles approaching such intersection, or because of the number of reported accidents or the apparent probability thereof, or by reasons of physical conditions which render any such intersection exceptionally dangerous or hazardous to life or property, and where the factors creating this special hazard are such that according to the principles and experience of traffic engineering, the installation of stop signs is reasonably calculated to reduce the expectancy of accidents and that the use of warning signs would be inadequate.

The following location meets the necessary criteria as defined in Section 72.101. of the San Diego County Code and therefore has been deemed appropriate to be signed accordingly:

ESCONDIDO

The intersection of Forest Drive and Kaywood Drive. A stop control is to be placed facing westbound traffic on Forest Drive.

Hidden Meadows Community Sponsor Group



Proposed location for the stop control to be installed.

**Draft Environmental Impact Report
for the
San Diego County Socially Equitable Cannabis Program
SCH # 2023090330**

PREPARED FOR
County of San Diego
Planning & Development Services Department
5510 Overland Avenue, Suite 210
San Diego, CA 92123

PREPARED BY
Ascent, DBA Ascent Environmental, Inc.
2550 Fifth Avenue, Suite 640
San Diego, CA 92103

January 2025

**Draft Environmental Impact Report
for the
San Diego County Socially Equitable Cannabis Program**

SCH # 2023090330

Prepared for:

**County of San Diego
Planning & Development Services Department
5510 Overland Avenue, Suite 210
San Diego, CA 92123**

**Contact: Jessica Norton, Senior Planner
(619) 541-0016**

Prepared by:

**Ascent
2550 Fifth Avenue, Suite 640
San Diego, CA 92103
Contact: Patrick Angell, Principal
(916) 764-0108**

January 2025

TABLE OF CONTENTS

Section	Page
LIST OF ABBREVIATIONS	VII
SUMMARY	S-1
Overview	S-1
Project Description	S-1
Project Objectives	S-2
Impact Summary	S-3
Alternatives to the Cannabis Program	S-3
Areas of Controversy and Issues to Be Resolved by the Decision-Making Body	S-5
1 PROJECT DESCRIPTION, LOCATION, AND ENVIRONMENTAL SETTING	1-1
1.1 Introduction	1-1
1.2 Project Objectives	1-1
1.3 Regional Location and Characteristics	1-2
1.4 Environmental Setting	1-3
1.5 Cannabis Overview	1-3
1.6 Project Description	1-12
1.7 Purpose and Use of this Program Environmental Impact Report	1-20
1.8 EIR Review Process	1-22
1.9 EIR Impact Analysis Methodology	1-26
1.10 Project Consistency with Applicable Plans	1-27
1.11 History of Cannabis Program Development	1-27
1.12 Projected Future Commercial Cannabis Uses Under the Cannabis Program ...	1-29
1.13 Cumulative Impact Analysis	1-29
1.14 Program EIR Organization	1-33
2 SIGNIFICANT ENVIRONMENTAL EFFECTS OF THE PROPOSED PROJECT	2-1
2.1 Approach to the Environmental Analysis	2-1
2.2 Aesthetics	2.2-1
2.3 Agricultural and Forest Resources	2.3-1
2.4 Air Quality	2.4-1
2.5 Biological Resources	2.5-1
2.6 Cultural and Paleontological Resources	2.6-1
2.7 Energy	2.7-1
2.8 Geology, Soils, and Mineral Resources	2.8-1
2.9 Greenhouse Gas Emissions and Climate Change	2.9-1
2.10 Hazards and Hazardous Materials	2.10-1
2.11 Hydrology and Water Quality	2.11-1
2.12 Land Use and Planning	2.12-1
2.13 Noise	2.13-1
2.14 Population and Housing	2.14-1
2.15 Public Services	2.15-1
2.16 Transportation	2.16-1
2.17 Tribal Cultural Resources	2.17-1
2.18 Utilities and Service Systems	2.18-1
2.19 Wildfire	2.19-1

3	ENVIRONMENTAL EFFECTS FOUND NOT TO BE SIGNIFICANT	3-1
4	ALTERNATIVES	4-1
4.1	Introduction	4-1
4.2	Rationale for Alternative Selection	4-2
4.3	Alternatives Considered but Not Evaluated Further	4-5
4.4	Analysis of the Alternatives	4-5
4.5	Environmentally Superior Alternative	4-12
5	OTHER CEQA SECTIONS	5-1
5.1	Growth Inducement.....	5-1
5.2	Significant and Unavoidable Adverse Impacts	5-3
5.3	Significant Irreversible Environmental Changes.....	5-4
6	REFERENCES	6-1
7	REPORT PREPARERS	7-1
7.1	San Diego County (Lead Agency).....	7-1
7.2	Ascent (CEQA Compliance).....	7-1
7.3	Intersecting Metrics (Transportation).....	7-1
8	MITIGATION MEASURES	8-1
8.1	List of Mitigation Measures.....	8-1

APPENDICES

Appendix A: Notice of Preparation and Comments Received

Appendix B: Proposed Amendments to the San Diego County Zoning Ordinance and Code of Regulatory Ordinances for Cannabis Uses (October 2024 version)

Appendix C: Air Quality, Greenhouse Gas, and Energy Modeling

Appendix D: Noise Measurement Data and Noise Modeling Calculations

FIGURES

Figure 1.1	Regional Location	1-42
Figure 1.2	Unincorporated Areas Where Commercial Cannabis Would Be Allowed....	1-43
Figure 2.2.1a	Representative Views from Public Vantage Points in San Diego County. 2.2-	41
Figure 2.2.1b	Representative Views from Public Vantage Points in San Diego County. 2.2-	42
Figure 2.2.1c	Representative Views from Public Vantage Points in San Diego County. 2.2-	43
Figure 2.2.1d	Representative Views from Public Vantage Points in San Diego County. 2.2-	44
Figure 2.2.1e	Representative Views from Public Vantage Points in San Diego County. 2.2-	45
Figure 2.2.2	Community Planning Areas in San Diego County	2.2-47
Figure 2.2.3	State Scenic Highways and National Scenic Byways in San Diego County. 2.2-	49
Figure 2.2.4a	Views of Existing Commercial Cannabis Facilities in San Diego County . 2.2-	51
Figure 2.2.4b	Views of Existing Commercial Cannabis Facilities in San Diego County . 2.2-	52
Figure 2.2.4c	Views of Existing Commercial Cannabis Facilities in San Diego County . 2.2-	53

Figure 2.2.5a	Representative Examples of Cannabis Cultivation Uses	2.2-54
Figure 2.2.5b	Representative Examples of Cannabis Cultivation Uses	2.2-55
Figure 2.2.5c	Representative Examples of Cannabis Cultivation Uses	2.2-56
Figure 2.2.5d	Representative Examples of Cannabis Cultivation Uses	2.2-57
Figure 2.2.5e	Representative Examples of Cannabis Cultivation Uses	2.2-58
Figure 2.2.5f	Representative Examples of Cannabis Cultivation Uses	2.2-59
Figure 2.2.5g	Representative Examples of Cannabis Cultivation Uses	2.2-60
Figure 2.2.5h	Representative Examples of Cannabis Cultivation Uses	2.2-61
Figure 2.2.6	Aerial View of Small Mixed-Light Commercial Cannabis Cultivation Site in Mendocino County	2.2-62
Figure 2.2.7	Aerial View of Outdoor Commercial Cannabis Cultivation Site in Mendocino County	2.2-63
Figure 2.3.1	Farmland Classification	2.3-19
Figure 2.5.1	Vegetation and Habitat Types in the Program Area	2.5-141
Figure 2.5.2	Vegetation Alliances in Western San Diego County.....	2.5-143
Figure 2.5.3	Aquatic Habitat in the Program Area	2.5-145
Figure 2.5.4	Designated Critical Habitat in San Diego County	2.5-147
Figure 2.5.5	California Essential Habitat Connectivity	2.5-149
Figure 2.5.6	Mountain Lion Habitat Connectivity	2.5-151
Figure 2.5.7	MSCP Plan Areas and Draft Plan Areas	2.5-153
Figure 2.8.1	Potential Expansive Soils in San Diego County	2.8-41
Figure 2.8.2	Areas Susceptible to Landslides in San Diego County	2.8-43
Figure 2.8.3	Mapped Faults in San Diego County.....	2.8-45
Figure 2.8.4	Potential Liquefaction Zones in San Diego County	2.8-47
Figure 2.8.5	Mineral Resource Zones in San Diego County	2.8-49
Figure 2.8.6	Mineral Resources in San Diego County	2.8-50
Figure 2.11.1	2019 SGMA Basin Prioritization	2.11-63
Figure 2.11.2	San Diego County Watersheds	2.11-65
Figure 2.18.1	Water Service Districts	2.18-35
Figure 2.19.1	Fire Responsibility Area and Wildfire Hazard Severity Zones	2.19-43
Figure 5.1	Statewide Sales of Cannabis Products by Year	5-6

TABLES

Table S.1	Summary of Impacts and Mitigation Measures	S-6
Table S.2	Summary of the Environmental Effects of the Alternatives Relative to Those of the Proposed Project.....	S-13
Table 1.1	Proposed Permit Type Required by Zone for Commercial Cannabis Uses...	1-35
Table 1.2	State Cannabis Operation License Types	1-35
Table 1.3	Required Project Approvals.....	1-37
Table 1.4	Alternative Development Assumptions.....	1-37
Table 1.5	In-Process Projects That Include General Plan Amendments	1-41
Table 2.2.1	Aesthetics Summary of Impacts.....	2.2-1
Table 2.3.1	Agricultural and Forest Resources Summary of Impacts	2.3-1
Table 2.3.2	Existing Extent of Crop Types in San Diego County	2.3-17
Table 2.3.3	Farmland Mapping and Monitoring Program Mapping Categories	2.3-17
Table 2.3.4	Important Farmland Acreages in San Diego County (2020).....	2.3-18
Table 2.4.1	Air Quality Summary of Impacts.....	2.4-1
Table 2.4.2	Ambient Air Quality Standards and Attainment Status for the San Diego Air Basin	2.4-34
Table 2.4.3	Sources and Health Effects of Criteria Air Pollutants	2.4-35
Table 2.4.4	Summary of Annual Ambient Air Quality Data in San Diego County (2021–2023).....	2.4-36
Table 2.4.5	Screening-Level Thresholds for Air Quality Impact Analysis.....	2.4-36
Table 2.4.6	Criteria Air Pollutant and Precursor Emissions Associated with Construction of Each New Individual Commercial Cannabis Cultivation Type and Noncultivation Site	2.4-37
Table 2.4.7	Criteria Air Pollutant and Precursor Emissions Associated with Operation of Each New Individual Commercial Cannabis Cultivation Type and Noncultivation Site.....	2.4-37
Table 2.4.8	Cumulative Criteria Air Pollutant and Precursor Emissions Associated with Construction of 12 New Licensed Commercial Cannabis Sites Simultaneously.....	2.4-37
Table 2.4.9	Cumulative Criteria Air Pollutant and Precursor Emissions Associated with Operation of New Commercial Cannabis Sites (Alternatives 2, 3, and 5).....	2.4-38
Table 2.4.10	Cumulative Criteria Air Pollutant and Precursor Emissions Associated with Operation of New Commercial Cannabis Sites (Alternative 4).....	2.4-38
Table 2.5.1	Biological Resources Summary of Impacts.....	2.5-1
Table 2.5.2	Habitat and Land Cover Types in the Program Area.....	2.5-90
Table 2.5.3	Special-Status Plant Species Known to Occur in San Diego County	2.5-92
Table 2.5.4	Special-Status Wildlife Species Known to Occur in San Diego County..	2.5-118

Table 2.5.5	Legacy Sensitive Natural Communities Known to Occur in San Diego County	2.5-136
Table 2.5.6	Sensitive Natural Communities Known to Occur and with Potential to Occur in San Diego County.....	2.5-137
Table 2.5.7	Minimum Riparian Setbacks.....	2.5-140
Table 2.6.1	Cultural and Paleontological Resources Summary of Impacts.....	2.6-1
Table 2.6.2	Resources Previously Recorded in San Diego County	2.6-48
Table 2.7.1	Energy Summary of Impacts	2.7-1
Table 2.7.2	SDG&E and the State of California Power Mix in 2022.....	2.7-20
Table 2.7.3	SDCP and the State of California Power Mix in 2022	2.7-21
Table 2.7.4	Energy Consumption Associated with Construction of Individual New Commercial Cannabis Cultivation Site Types and Noncultivation Sites ...	2.7-21
Table 2.7.5	Energy Consumption Associated with Operation of Individual New Commercial Cannabis Cultivation Site Types and Noncultivation Sites ...	2.7-21
Table 2.7.6	Cumulative Operational Energy Consumption Associated with Operation of New Commercial Cannabis Cultivation Site Types and Noncultivation Sites (Alternatives 2, 3, and 5).....	2.7-22
Table 2.7.7	Cumulative Operational Energy Consumption Associated with Operation of New Commercial Cannabis Cultivation Site Types and Noncultivation Sites (Alternative 4)	2.7-22
Table 2.7.8	Cumulative Construction Energy Consumption Associated with Construction of 12 New Commercial Cannabis Cultivation Site Types Simultaneously.....	2.7-22
Table 2.8.1	Geology, Soils, and Mineral Resources Summary of Impacts	2.8-1
Table 2.8.2	Active Faults in and Adjacent to San Diego County	2.8-36
Table 2.8.3	The Modified Mercalli Scale of Earthquake Intensities.....	2.8-37
Table 2.8.4	Unique Geologic Features in San Diego County.....	2.8-39
Table 2.9.1	Greenhouse Gas Emissions and Climate Change Summary of Impacts ...	2.9-1
Table 2.9.2	County Greenhouse Gas Emissions Inventory by Sector in 2019.....	2.9-20
Table 2.9.3	Greenhouse Gas Emissions Associated with Operation of Individual New Commercial Cannabis Cultivation Site Types and Noncultivation Sites	2.9-20
Table 2.10.1	Hazards and Hazardous Materials Summary of Impacts	2.10-1
Table 2.10.2	DTSC Hazardous Materials and Contamination Sites.....	2.10-42
Table 2.10.3	GeoTracker Database Hazardous Materials and Contamination Sites ..	2.10-43
Table 2.10.4	CDO and CAO Hazardous Materials and Contamination Sites.....	2.10-44
Table 2.11.1	Hydrology and Water Quality Summary of Impacts.....	2.11-1
Table 2.11.2	Impaired Waterbodies in San Diego County	2.11-56
Table 2.11.3	Technical Report Requirements by Tier.....	2.11-59
Table 2.11.4	Facility Status.....	2.11-60

Table 2.11.5	Site Maintenance Status	2.11-60
Table 2.11.6	Stormwater Runoff Monitoring.....	2.11-60
Table 2.11.7	Estimated Project Irrigation Water Demand for Future New Commercial Cannabis Cultivation, Processing, and Distribution Uses...	2.11-61
Table 2.12.1	Land Use and Planning Summary of Impacts	2.12-1
Table 2.13.1	Noise Summary of Impacts	2.13-1
Table 2.13.2	Typical A-Weighted Noise Levels.....	2.13-47
Table 2.13.3	Human Response to Different Levels of Ground Noise and Vibration....	2.13-47
Table 2.13.4	FTA Construction Damage Vibration Criteria	2.13-47
Table 2.13.5	Caltrans Recommendations Regarding Levels of Exposure	2.13-47
Table 2.13.6	County of San Diego Noise Compatibility Guidelines.....	2.13-48
Table 2.13.7	County of San Diego Noise Standards.....	2.13-49
Table 2.13.8	San Diego County Noise Abatement and Control Ordinance Exterior Noise Standards.....	2.13-50
Table 2.13.9	Noise Emission Levels from Construction Equipment.....	2.13-51
Table 2.13.10	Vibration Reference Levels for Construction Equipment.....	2.13-51
Table 2.13.11	Typical Noise Source Levels for Special Events (A-Weighted L50 Levels).....	2.13-51
Table 2.13.12	Groundborne Vibration and Noise Standards	2.13-52
Table 2.13.13	Modeled Average Daily Traffic	2.13-53
Table 2.14.1	Population and Housing Summary of Impacts	2.14-1
Table 2.14.2	Existing and Projected Population.....	2.14-11
Table 2.14.3	Employment by Industry in San Diego County (2023).....	2.14-11
Table 2.14.4	Existing and Projected Housing Units	2.14-12
Table 2.15.1	Public Services Summary of Impacts.....	2.15-1
Table 2.16.1	Transportation Summary of Impacts	2.16-1
Table 2.16.2	Project Maximum Allowable Size per the Small Project Screening Criteria	2.16-29
Table 2.16.3	Project VMT Screening Criteria Summary	2.16-29
Table 2.17.1	Tribal Cultural Resources Summary of Impacts	2.17-1
Table 2.18.1	Utilities and Service Systems Summary of Impacts	2.18-1
Table 2.18.2	Wastewater Treatment Plants in San Diego County	2.18-34
Table 2.18.3	Active Solid Waste Facilities in San Diego County.....	2.18-34
Table 2.18.4	Estimated Project Irrigation Water Demand for Future New Commercial Cannabis Cultivation, Processing, and Distribution Uses.....	2.18-34
Table 2.19.1	Wildfire Summary of Impacts	2.19-1
Table 2.19.2	Wildfire Risk in the Unincorporated County.....	2.19-40
Table 2.19.3	Major Wildfires in San Diego County 2003–2024.....	2.19-40

Table 2.19.4	Causes of Fire in San Diego County and the State within the SRA (2019–2023).....	2.19-41
Table 2.19.5	Fire Hazard Severity Zone Area within the Program Area	2.19-41
Table 4.1	Summary of the Environmental Effects of the Alternatives Relative to Those of the Proposed Project.....	4-13
Table 5.1	Statewide Cannabis Harvest, Packaging, and Sales 2020–2023.....	5-6

LIST OF ABBREVIATIONS

°F	degrees Fahrenheit
2020 Strategic Plan	County's 2020–2030 County Operations Strategic Sustainability Plan
2021 Regional Plan	<i>San Diego Forward: The Regional Plan</i>
2022 SIP	2022 State SIP Strategy
AB	Assembly Bill
ACM	asbestos containing material
ADT	average daily traffic
af	acre-feet
AFV	alternative fuel vehicles
AFY	acre-feet per year
AIA	Airport Influence Area
AICUZ	Air Installation Compatible Use Zone
ALUC	Airport Land Use Commission
ALUCP	Airport Land Use Compatibility Plans
amsl	above mean sea level
ASD	Alpine Sanitation District
ASTREA	Air Support to Regional Enforcement Agencies
ATP	County of San Diego Active Transportation Plan
AUMA	Adult Use of Marijuana Act
BERD	Build Environment Resources Directory
BIOS	Biogeographic Information and Observation System
BLM	US Bureau of Land Management
BMO	Biological Mitigation Ordinance
BMP	best management practice
Board	San Diego County Board of Supervisors
Borrego Basin	Borrego Valley Groundwater Basin
BOS	Board of Supervisors
BPTC	best practical treatment or control
BWD	Borrego Water District
CA MUTCD	California Manual on Uniform Traffic Control Devices
CA SDWA	California Safe Drinking Water Act
CAA	Clean Air Act
CAAQS	California Ambient Air Quality Standards
CAFE	Corporate Average Fuel Economy
CAL FIRE	California Department of Forestry and Fire Protection
Cal/OSHA	California Occupational Safety and Health Administration

CalARP	California Accidental Release Prevention
CalEEMod	California Emissions Estimator Model
CalEPA	California Environmental Protection Agency
CALGreen Code	California Green Building Standards Code
CALGreen	State Building Energy Efficiency Standards
CalIPC	California Invasive Plant Council
CalRecycle	California Department of Resources Recycling and Recovery
Caltrans	California Department of Transportation
Cannabis Program	Socially Equitable Cannabis Program
Cannabis SIUR	Cannabis Small Irrigation Use Registration
CAP Checklist	2024 Climate Action Plan Consistency Review Checklist
CAP	Climate Action Plan
CARB	California Air Resources Board
CBC	California Building Code
CCA	Community Choice Aggregation
CCAA	California Clean Air Act
CCR	California Code of Regulations
CDC	Center for Disease Control
CDFW	California Department of Fish and Wildlife
CDPR	California Department of Pesticide Regulation
CEC	California Energy Commission
CEQA	California Environmental Quality Act
CESA	California Endangered Species Act
CFC	California Fire Code
CFR	Code of Federal Regulations
CGS	California Geological Survey
CHHSL	Human Health Screening Levels
CHR	Colorado Hydrologic Region
CHRIS	California Historical Resources Information System
CHSC	California Health and Safety Code
CNDDDB	California Natural Diversity Database
CNEL	community noise equivalent
CNPS	California Native Plant Society
CO	carbon monoxide
CO ₂	carbon dioxide
CP	countywide policies
CPA	Community Plan Area
CRHR	California Register of Historic Resources
CRPR	California Rare Plant Rank
CSA	County Service Area

CSD	Pauma Valley Community Services District
CTMP	Community Trails Master Plan
CTP	County of San Diego Trails Program
CUPA	Certified Unified Program Agency
CVC	California Vehicle Code
CWA	Clean Water Act
CWSMD	Campo Water and Sewer Maintenance District
dB	decibels
dBA	A-weighting decibel scale
DCC	California Department of Cannabis Control
DEHQ	Department of Environmental Health and Quality
DHS	California Department of Health Services
diesel PM	diesel particular matter
District	San Diego County Sanitation District
DOC	California Department of Conservation
DOD	US Department of Defense
DOF	California Department of Finance
DPLU	Department of Planning and Land Use
DPR	Department of Parks and Recreation
DTSC	California Department of Toxic Substances Control
DWR	California Department of Water Resources
ECA	Essential Connectivity Area
EDD	California Employment Development Department
EIR	Environmental Impact Report
Emergency Plan	State of California Emergency Plan
EMS	emergency medical service
EO	Executive Order
EOMSMD	East Otay Mesa Sewer Maintenance District
EPA	US Environmental Protection Agency
EPAct	Energy Policy Act of 1992
EPCRA	Emergency Planning and Community Right-to-Know Act of 1986
ESA	Endangered Species Act
EV	electric vehicles
FEIR	Final Environmental Impact Report
FEMA	Federal Emergency Management Agency
FHSZ	fire hazard severity zone
FIRM	Federal Insurance Rate Map
FMCSA 2020	Federal Motor Carrier Safety Administration

FMMP	Farmland Mapping and Monitoring Program
FPA	Z'berg-Nejedly Forest Practice Act of 1973
FPD	Fire Protection District
FPP	Fire Protection Plan
FRA	federal responsibility areas
FRAP	Fire and Resource Assessment Program
FSC	Fire Safe Council
FTA	Federal Transit Administration
FUDS	Formerly Used Defense Sites
General Plan	The County of San Diego General Plan
GHG	greenhouse gas
GMP	groundwater management plan
GPA	General Plan Amendment
GPU Draft EIR	General Plan Update Draft EIR
GPU PEIR	2011 General Plan Update Program EIR
GSA	groundwater sustainability agency
GSP	groundwater sustainability plan
H&SC	Health and Safety Code
HA	hydrologic area
HAM	Hazardous Agricultural Materials
HAP	hazardous air pollutant
HCD	California Department of Housing and Community Development
HCP	Habitat Conservation Plan
HIRT	Hazardous Incident Response Team
HLP	Habitat Loss Permit
HM	hazardous materials
HMBP	Hazardous Materials Business Plan
HMD	Hazardous Materials Division
HMIS	hazardous materials inventory statement
HMMP	hazardous material management plan
hp	horsepower
HR	Hydrologic Region
HU	hydrologic units
HVAC	heating, ventilation, and air conditioning
Hz	hertz
I-5	Interstate 5
IA	Implementing Agreement
IEPR	Integrated Energy Policy Report

IRWM	Integrated Regional Water Management
ITE's	the Institute Transportation of Engineers'
IWMP	Integrated Waste Management Plan
JPA	Joint Powers Authority
JRMP	Jurisdictional Runoff Management Program
JSD	Julian Sanitation District
kBTU	kilowatt-hours of electricity, British Thermal Units
LBP	lead based paint
LCFS	Low Carbon Fuel Standard
L _{dn}	Day-Night Level
LEA	Local Enforcement Agency
L _{eq}	Equivalent Continuous Sound Level
L _{max}	Maximum Sound Level
LOS	level of service
LRA	Local Responsibility Area
LSA Agreement	Lake and Streambed Alteration Agreement
LSD	Lakeside Sanitation District
LTO	Licensed Timber Operator
LUFT	leaking underground fuel tanks
maf	million acre-feet
MAUCRSA	Medicinal and Adult-Use Cannabis Regulation and Safety Act
MBTA	Migratory Bird Treaty Act
MCAS	Marine Corps Air Station
MCL	maximum contaminant levels
MCRSA	Medical Cannabis Regulation and Safety Act
MCV	Manual of California Vegetation
Metro	Metropolitan Wastewater System
mgd	million gallons per day
MLD	most likely descendant
mm/yr	millimeters per year
MMRP	mitigation monitoring and reporting program
MMTCO _{2e}	million metric tons of carbon dioxide-equivalent
mPa	micro-Pascals
MPO	metropolitan planning organization
MRZ	Mineral Resource Zones
MS4	Municipal Separate Storm Sewer Systems
MSCP	Multiple Species Conservation Program

MTS	Metropolitan Transit System
MUP	Major Use Permit
MWD	Metropolitan Water District
NAAQS	National Ambient Air Quality Standards
NAHC	Native American Heritage Commission
NCTD	North County Transit District
NEHRP	National Earthquake Hazards Reduction Program
NFIP	National Flood Insurance Program
NHTSA	National Highway Transportation Safety Administration
NO	nitric oxide
NO ₂	nitrogen dioxide
NOP	notice of preparation
NO _x	oxides of nitrogen
NPDES	National Pollution Discharge Elimination System
NPPA	Native Plant Protection Act
NPS	National Park Services
NRHP	National Register of Historic Places
NVCS	National Vegetation Classification System
OAEP	Operational Area Emergency Plan
OAL	Office of Administrative Law
OAV	odor activity value
OEHHA	Office of Environmental Health Hazard Assessment
OES	County of San Diego Office of Emergency Services
OSHA	Occupational Safety and Health Administration
OWTS	onsite wastewater treatment systems
PAMA	Preapproved Mitigation Area
Pauma MWD	Pauma Municipal Water District
P-C	Production-Consumption
PDS	Planning & Development Services
PEIR	program environmental impact report
PM ₁₀	respirable particulate matter that have an aerodynamic diameter of 10 micrometers or less
PM _{2.5}	fine particulate matter that have an aerodynamic diameter of 2.5 micrometers or less
Porter-Cologne Act	Porter-Cologne Water Quality Control Act of 1970
PPV	Peak Particle Velocity
PRC	Public Resources Code
PRG	Preliminary Remediation Goal
PRP	Pesticide Regulation Program

PUD	City of San Diego's Public Utilities Department
PV	photovoltaic
PVSD	Pine Valley Sanitation District
RAQS	regional air quality strategy
RCA	Resource Conservation Area
RCRA	Resource Conservation and Recovery Act
Regulator Code	San Diego County Code of Regulatory Ordinances
RHNA	Regional Housing Needs Assessment
RMP	Risk Management Plan
RMS	root-mean-square
RPO	Resource Protection Ordinance
RTIP	Regional Transportation Improvement Program
RTP/SCS	Regional Transportation Plan/Sustainable Communities Strategy
RWQCB	regional water quality control board
SAM	Site Assessment and Mitigation
SANDAG	San Diego Association of Governments
SB	Senate Bill
SBAB	San Diego Air Basin
SCIC	South Coastal Information Center
SCS	Sustainable Communities Strategy
SDAPCD	San Diego Air Pollution Control District
SDCP	San Diego Community Power
SDCRAA	San Diego County Regional Airport Authority
SDCWA	San Diego County Water Authority
SDG&E	San Diego Gas and Electric Company
SDHR	San Diego Hydrologic Region
SDMMP	San Diego Management and Monitoring Program
SDTC	San Diego Transit Corporation
SEMS	Standard Emergency Management System
sf	square feet
SFHAs	Special Flood Hazard Areas
SGMA	Sustainable Groundwater Management Act
SGMP	Sustainable Groundwater Management Plan
SIP	state implementation plan
SIUR	Small Irrigation Use Registration
SLRMWD	San Luis Rey Municipal Water District
SMARA	Surface Mining and Reclamation Act
SO ₂	sulfur dioxide
SoCalGas	Southern California Gas Company

Social Equity Program	Social Equity Program
South County Plan	County Subarea Plan
SPCC	Spill Prevention, Control, and Countermeasure
SPL	sound pressure level
SR	State Route
SRA	state responsibility area
SSMP	Sewer System Management Plan
State CEQA Guidelines	California Environmental Quality Act Guidelines
State Water Board	State Water Resources Control Board
SVSD	Spring Valley Sanitation District
SWPPP	stormwater pollution prevention plan
SWRCB	State Water Resources Control Board
SWRP	Stormwater Resource Plan
TAC	toxic air contaminant
TDM	Transportation Demand Management
THP	timber harvest plan
TM	Tentative Map
TMDL	total maximum daily load
TPMs	Tentative Parcel Maps
TPZ	timberland production zone
TRI	Toxic Release Inventory
TSDF	Treatment, Storage and Disposal Facilities
UDC	Unified Disaster Council
URM	unreinforced masonry buildings
US	United States
USACE	US Army Corps of Engineers
USC	US Code
USFS	US Forest Service
USFWS	US Fish and Wildlife Service
USGS	US Geological Survey
USLR	Upper San Luis Rey
USLRRCD	Upper San Luis Rey Resource Conservation District
USMC	United States Marine Corps
UST	underground storage tank
UWMP	Urban Water Management Plan
UWMPA	Urban Water Management Planning Act
VAP	Voluntary Assistance Program
VdB	vibration decibels
VegCAMP	Vegetation Classification and Mapping Program

VMT	vehicle miles traveled
VOC	volatile organic compound
WDR	waste discharge requirement
WGSMD	Winter Gardens Sewer Maintenance District
Williamson Act	California Land Conservation Act of 1965
WMA	Watershed Management Area
WPO	Watershed Protection, Stormwater Management, and Discharge Control Ordinance
WUI	wildland-urban interface
WWTP	Wastewater Treatment Plant
YMWD	Yuima Municipal Water District
ZEV	zero-emission vehicle
Zoning Ordinance	San Diego County Zoning Ordinance

SUMMARY

This summary is provided in accordance with California Environmental Quality Act Guidelines (State CEQA Guidelines) Section 15123. As stated in Section 15123(a), “an EIR [environmental impact report] shall contain a brief summary of the proposed action and its consequences. The language of the summary should be as clear and simple as reasonably practical.” As required by the guidelines, this chapter includes (1) a summary description of the Socially Equitable Cannabis Program (Cannabis Program), (2) identification of the alternatives evaluated and of the environmentally superior alternative, (3) a discussion of the areas of controversy associated with the project, and (4) a synopsis of environmental impacts and recommended mitigation measures (Table S.1, presented at the end of this chapter).

Overview

As required by CEQA, this program environmental impact report (PEIR) (1) assesses the potentially significant direct, indirect, and cumulative environmental effects of the Cannabis Program; (2) identifies potential feasible means of avoiding or substantially lessening significant adverse impacts; and (3) evaluates a range of reasonable alternatives to the Cannabis Program, including the required No Project Alternative. The County of San Diego (County) is the “lead agency” for the Cannabis Program evaluated in this PEIR and has the principal responsibility for certifying the PEIR and approving the Cannabis Program. Pursuant to State CEQA Guidelines, this PEIR evaluates the effects of the entire Cannabis Program. This PEIR will be used by the County to evaluate the environmental implications of adopting the Cannabis Program.

Project Description

On January 27, 2021, the Board of Supervisors (Board) directed County staff to develop the Cannabis Program, which would establish a licensing and permitting system for new commercial cannabis activities, including retail, cultivation, manufacturing, distribution, testing, microbusinesses, temporary events, and consumption lounges. The proposed Cannabis Program consists of 3 main components, which are discussed further below, (1) Social Equity Program, (2) Cannabis Ordinance amendments, and (3) a cannabis licensing and permitting system. The proposed Cannabis Program would follow the state regulations for buffers from sensitive uses.

The Cannabis Program would contain a Social Equity Program. The goal of the Social Equity Program is to ensure that individuals negatively or adversely impacted by cannabis criminalization are provided the opportunity to successfully participate in the regulated cannabis market. The Social Equity Program would help qualified social equity applicants participate in the legal cannabis industry by providing different types of assistance, including, but not limited to, expungement services, business and technical assistance, one-on-one coaching and mentoring, and grant opportunities.

The Cannabis Program also includes amendments to the San Diego County Code of Regulatory Ordinances (Regulatory Code) and Zoning Ordinance. Under these amendments, medicinal use and adult-use would be under the same regulations and referred to as “commercial cannabis,” with no distinction between medicinal and adult-use. Amendments to the Regulatory Code and Zoning Ordinance would establish the requirements for operating a

commercial cannabis business, and the Zoning Ordinance update would establish the zoning regulations to allow for commercial cannabis facilities. The Regulatory Code amendments developed for the Cannabis Program outline the requirements for running a commercial cannabis business in the unincorporated county, including retail, cultivation, manufacturing, distribution, testing, microbusinesses, temporary events, and consumption lounges. The Zoning Ordinance amendments under the Cannabis Program would designate where cannabis operations can take place and would detail any performance standards required based on the cannabis activity type.

Development of the cannabis licensing and permitting system is being led by the County of San Diego Planning & Development Services (PDS). The licensing and permitting system would establish the structure (application framework, review processes) and procedures for obtaining the required County license(s) and permit(s) to operate commercial cannabis facilities. A corresponding fee structure would be established as part of the system's development. This licensing and permitting system would be established after initial adoption of the Cannabis Program.

Project Objectives

The overall purpose of the Cannabis Program is to acknowledge the will of the voters in passing Proposition 64, Marijuana Legalization, in 2016 and allow for medicinal and commercial adult-use cannabis operations in unincorporated San Diego County, including retail, cultivation, manufacturing, distribution, testing, microbusinesses, temporary events, and consumption lounges. The primary objectives of the Cannabis Program are to:

- develop a regulated and legal cannabis industry that allows for greater economic opportunity and safe access to cannabis;
- provide consistency with state law and County regulations associated with commercial cannabis operations;
- prioritize social equity, economic access, and business opportunities for those who have been impacted by cannabis-related criminalization and the War on Drugs;
- develop an efficient and user-friendly cannabis licensing and permitting system;
- develop a regulatory program that will assist in protecting public health, safety, and welfare;
- minimize the effects of commercial cannabis activities on sensitive populations and land uses;
- minimize the potential adverse effects of cannabis activities on the environment, natural resources, and wildlife, including wetlands and sensitive habitats, narrow endemic species, and vernal pools, as well as effects on water supply, water quality, and instream flows; and
- develop and implement a program designed to support and encourage farming in San Diego County, preserve agricultural land, and create new opportunities for farmers.

Impact Summary

This PEIR examines the potential environmental effects from implementation of the Cannabis Program, including information related to existing site conditions, analyses of the types and magnitude of individual and cumulative environmental impacts, and feasible mitigation measures that could reduce or avoid environmental impacts. In accordance with Appendix G of the State CEQA Guidelines, the potential environmental effects of the Cannabis Program are analyzed for the following issue areas:

- aesthetics;
- agricultural and forest resources;
- air quality;
- biological resources;
- cultural and paleontological resources;
- energy;
- geology, soil, and mineral resources;
- greenhouse gas emissions and climate change;
- hazards and hazardous materials;
- hydrology and water quality;
- land use and planning;
- noise;
- population and housing;
- public services;
- transportation;
- tribal cultural resources;
- utilities and service systems; and
- wildfire.

Table S.1, presented at the end of this chapter, provides a summary of the environmental impacts that could result from implementation of the Cannabis Program and feasible mitigation measures that could reduce or avoid environmental impacts. For each impact, Table S.1 identifies the significance of the impact before mitigation, applicable mitigation measures, and the level of significance of the impact after the implementation of the mitigation measures.

Alternatives to the Cannabis Program

The County is considering 5 alternative variations to the Cannabis Program, including the No Project Alternative. Alternative 2 (Proposed Project), Alternative 3 (Expanded Regulations), Alternative 4 (Outdoor Cannabis Cultivation Prohibition), and Alternative 5 (Maximum 1 Acre Outdoor Cannabis Cultivation), which would involve the same 3 components of the Cannabis Program (Social Equity Program, Cannabis Ordinance amendments, and a cannabis licensing and permitting system). The project alternatives differ in regard to the definition and buffer distance from sensitive uses, allowed license types, and allowed maximum outdoor cultivation canopy. Alternatives 2, 3, 4, and 5 would include the storefront license ceiling of 25 facilities established by the Social Equity Program. All alternatives will comply with State Water Resources Control Board Cannabis Cultivation General Order (Order No. WQ 2023-0102-DWQ) and other state operation requirements for cannabis facilities siting and design. These alternatives are described below.

- **Alternative 1: No Project—Retention of Current Cannabis Regulations.** This alternative would consist of not adopting the proposed Cannabis Program and ordinance amendments. The existing 5 commercial cannabis facilities in the unincorporated areas of El Cajon, Escondido, and Ramona would be allowed to continue to operate under the existing ordinances, which allow expansion of their

existing facilities and operations to a total of 10,000 square feet of building area. However, no new commercial cannabis operations would be allowed.

- **Alternative 2: Proposed Project—Cannabis Program Consistent with State Requirements.** This alternative would implement the Cannabis Program and would use state regulations for buffer standards (Business and Professional Code Section 26054(b)). Cannabis facilities would be required to observe a 600-foot buffer from certain state-defined sensitive uses, including schools, daycares, and youth centers.
- **Alternative 3: Cannabis Program with Expanded County Regulations.** This alternative would implement the Cannabis Program with incorporation of Measures 1, 2, and 3 from the June 15, 2022, Board direction. With inclusion of Measures 1 and 2, the definition of “sensitive uses” would be expanded beyond schools, daycares, and youth centers to also include regional parks, local parks, public trails, recreation facilities, preserves with visitor-serving amenities, religious assembly, childcare centers, public libraries operated by the County or other cities, residential care facilities, and other cannabis facilities. The required sensitive use buffer would be expanded to 1,000 feet. Measure 3 would expand existing County billboard regulations to prohibit advertising of cannabis on a billboard within 1,000 feet of a sensitive use.
- **Alternative 4: Cannabis Program with Outdoor Cannabis Cultivation Prohibition.** Under Alternative 4, all commercial outdoor cannabis cultivation within the unincorporated county would be prohibited and mixed-light and indoor cultivation would be allowed only within a building or greenhouse. This alternative would include a 1,000-foot buffer from sensitive uses, defined as schools, daycares, and youth centers to also include regional parks, local parks, public trails, recreation facilities, preserves with visitor-serving amenities, religious assembly, childcare centers, public libraries operated by the County or other cities, residential care facilities, and other cannabis facilities. Advertising of cannabis on a billboard would be prohibited within 1,000 feet of a sensitive use.
- **Alternative 5: Cannabis Program with Maximum 1 Acre of Outdoor Cannabis Cultivation Canopy.** Under Alternative 5, outdoor commercial cannabis cultivation would be limited to 1 acre of total canopy area, or 25 percent of the lot size, whichever is less. This alternative would include a 1,000-foot buffer from sensitive uses, defined as schools, daycares, and youth centers to also include regional parks, local parks, public trails, recreation facilities, preserves with visitor-serving amenities, religious assembly, childcare centers, public libraries operated by the County or other cities, residential care facilities, and other cannabis facilities. Advertising of cannabis on a billboard would be prohibited within 1,000 feet of a sensitive use.

Table S.2, included at the end of this chapter, presents the significant environmental impacts of these alternatives compared to those of the Alternative 2 (proposed project).

Under Alternative 1, the No Project Alternative, there would be no changes to the Cannabis Program and ordinance amendments. Therefore, overall, Alternative 1 would be the environmentally superior alternative because this alternative would reduce and avoid significant environmental impacts under Alternative 2. However, if the No Project Alternative is the environmentally superior alternative, CEQA requires that the EIR “shall also identify an environmentally superior alternative among the other alternatives” (Section 15126.6(e)(2)). Of the remaining alternatives, Alternative 4 would eliminate significant impacts to odors associated

with Alternative 2 and would reduce the severity of significant and unavoidable impacts related to hydrology and water quality and water supply, discussed in Chapter 4, "Alternatives." Therefore, Alternative 4 is the environmentally superior alternative.

Areas of Controversy and Issues to Be Resolved by the Decision-Making Body

Areas of Controversy Known to the Lead Agency

State CEQA Guidelines Section 15123(b)(2) requires that an EIR identify areas of controversy, including issues raised by other agencies and the public. Areas of known controversy associated with the Cannabis Program that are relevant to the EIR are listed below:

- adverse effects on and potential changes in aesthetic character,
- light pollution,
- loss of agricultural land,
- impacts on sensitive habitats and species,
- land preserves under the San Diego Multiple Species Conservation Program,
- introduction of nonnative species,
- energy usage and demands and the use of renewable energy sources,
- greenhouse gas emissions and climate change impacts,
- pesticide and hazardous chemical use,
- groundwater management,
- water quality degradation,
- increased traffic noise,
- operational nighttime noise,
- roadway safety and transportation hazards,
- reduced access to public transportation,
- increased vehicle miles traveled,
- increased traffic,
- adequate water supply,
- utility infrastructure impacts,
- wildfire risk during operation of cannabis facilities,
- increased odors, and
- increased noise.

Issues to be Resolved by the Decision-Making Body

State CEQA Guidelines Section 15123 requires the summary section of a Draft EIR to identify issues to be resolved related to the proposed project. Issues to be resolved by the County are identified below, including issues that will not necessarily be resolved through the PEIR:

- Should the proposed Cannabis Program be adopted?
- Which project alternative (or combination) should be adopted?
- What buffers are most appropriate and from what uses?
- Should the proposed mitigation measures identified in this PEIR be applied to future licensing actions?

Table S.1 Summary of Impacts and Mitigation Measures

Issue Topic	Potential Direct Impact	Potential Cumulative Impact	Mitigation Measure(s)	Impact After Mitigation
<i>2.2 Aesthetics</i>				
1. Change or Obstruct Scenic Vistas and Scenic Resources	Alternatives 1–5: Less than Significant	Alternatives 1–5: Less than Significant	No Mitigation Required	Alternatives 1–5: Less than Significant
2. Substantially Degrade Visual Character or Quality	Alternative 1: Less than Significant Alternatives 2–5: Significant	Alternative 1: Less than Significant Alternatives 2–5: Significant	M-AE.2-1	Alternative 1: Less than Significant Alternatives 2–5: Significant and Unavoidable
3. Adversely Affect Views due to New Light and Glare	Alternatives 1–5: Less than Significant	Alternatives 1–5: Less than Significant	No Mitigation Required	Alternatives 1–5: Less than Significant
<i>2.3 Agricultural and Forest Resources</i>				
1. Directly or Indirectly Convert Agricultural Resources or Conflict with Agricultural Zoning or Land Conservation Programs	Alternatives 1–5: No Impact	Alternatives 1–5: No Impact	No Mitigation Required	Alternatives 1–5: No Impact
<i>2.4 Air Quality</i>				
1. Conflict with Air Quality Plans	Alternatives 1-5: Less than Significant	Alternatives 1-5: Less than Significant	No Mitigation Required	Alternatives 1-5: Less than Significant
2. Result in a Cumulatively Considerable Net Increase of Any Nonattainment Criteria Pollutant	Alternatives 1-5: Less than Significant	Alternatives 1-5: Less than Significant	No Mitigation Required	Alternatives 1-5: Less than Significant
3. Result in Emissions of Odors Adversely Affecting a Substantial Number of People	Alternative 1 and 4: Less than Significant Alternatives 2, 3, and 5: Significant	Alternatives 1-5: Less than Significant	No Mitigation Available	Alternative 1 and 4: Less than Significant Alternatives 2, 3, and 5: Significant and Unavoidable

Issue Topic	Potential Direct Impact	Potential Cumulative Impact	Mitigation Measure(s)	Impact After Mitigation
<i>2.5 Biological Resources</i>				
1. Special-Status Plant and Wildlife Species	Alternative 1: Less than Significant Alternatives 2–5: Significant	Alternative 1: Less than Significant Alternatives 2–5: Significant	M-BI.1-1, M-BI.1-2, M-BI.1-3, M-BI.1-4, M-BI.1-5, M-BI.1-6, M-BI.1-7, M-BI.1-8, M-BI.1-9, M-BI.1-10, M-BI.1-11, M-BI.1-12, M-BI.1-13, M-BI.1-14, M-BI.1-15, M-BI.1-16, M-BI.1-17, M-BI.1-18, and M-BI.1-19	Alternative 1: Less than Significant Alternatives 2–5: Less than Significant
2. Riparian Habitat and Other Sensitive Natural Communities	Alternative 1: No Impact Alternatives 2–5: Significant	Alternative 1: No Impact Alternatives 2–5: Significant	M-BI.2-1	Alternative 1: No Impact Alternatives 2–5: Less than Significant
3. State and Federally Protected Wetlands	Alternative 1: No Impact Alternatives 2–5: Significant	Alternative 1: No Impact Alternatives 2–5: Significant	M-BI.3-1	Alternative 1: No Impact Alternatives 2–5: Less than Significant
4. Wildlife Movement Corridors and Nursery Sites	Alternative 1: No Impact Alternatives 2–5: Significant	Alternative 1: No Impact Alternatives 2–5: Significant	M-BI.4-1 and M-BI.4-2	Alternative 1: No Impact Alternatives 2–5: Less than Significant
5. Conflict with Local Policies or Ordinances	Alternative 1: No Impact Alternatives 2–5: Significant	Alternative 1: No Impact Alternatives 2–5: Significant	M-BI.5-1	Alternative 1: No Impact Alternatives 2–5: Less than Significant
6. Conflict with Adopted Habitat Conservation Plans and Natural Community Conservation Plans	Alternative 1: No Impact Alternatives 2–5: Less than Significant	Alternative 1: No Impact Alternatives 2–5: Less than Significant	No Mitigation Required	Alternative 1: No Impact Alternatives 2–5: Less than Significant

Issue Topic	Potential Direct Impact	Potential Cumulative Impact	Mitigation Measure(s)	Impact After Mitigation
<i>2.6 Cultural and Paleontological Resources</i>				
1. Cause a Substantial Adverse Change in the Significance of a Historical Resource	Alternatives 1–5: Significant	Alternatives 1–5: Significant	M-CR.1-1	Alternatives 1–5: Less than Significant
2. Cause a Substantial Adverse Change in the Significance of an Archaeological Resource	Alternatives 1–5: Less than Significant	Alternatives 1–5: Less than Significant	No Mitigation Required	Alternatives 1–5: Less than Significant
3. Directly or Indirectly Destroy a Unique Paleontological Resource	Alternatives 1–5: Less than Significant	Alternatives 1–5: Less than Significant	No Mitigation Required	Alternatives 1–5: Less than Significant
4. Disturb Any Human Remains	Alternatives 1–5: Less than Significant	Alternatives 1–5: Less than Significant	No Mitigation Required	Alternatives 1–5: Less than Significant
<i>2.7 Energy</i>				
1. Result in a Potentially Significant Environmental Impact Due to Wasteful, Inefficient, or Unnecessary Consumption of Energy Resources	Alternatives 1–5: Less than Significant	Alternatives 1–5: Less than Significant	No Mitigation Required	Alternatives 1–5: Less than Significant
2. Conflict with or Obstruct a State or Local Plan for Renewable Energy or Energy Efficiency	Alternatives 1–5: Significant	Alternatives 1–5: Significant	M-EN.2-1	Alternatives 1–5: Less than Significant
<i>2.8 Geology, Soils, and Mineral Resources</i>				
1. Exposure to Seismic-Related Hazards	Alternative 1: No Impact Alternatives 2–5: Less than Significant	Alternative 1: No Impact Alternatives 2–5: Less than Significant	No Mitigation Required	Alternative 1: No Impact Alternatives 2–5: Less than Significant
2. Soil Erosion or Topsoil Loss	Alternatives 1–5: Less than Significant	Alternatives 1–5: Less than Significant	No Mitigation Required	Alternatives 1–5: Less than Significant
3. Soil Stability	Alternatives 1–5: Less than Significant	Alternatives 1–5: Less than Significant	No Mitigation Required	Alternatives 1–5: Less than Significant
4. Expansive Soils	Alternative 1: No Impact Alternatives 2–5: Less than Significant	Alternative 1: No Impact Alternatives 2–5: Less than Significant	No Mitigation Required	Alternative 1: No Impact Alternatives 2–5: Less than Significant

Issue Topic	Potential Direct Impact	Potential Cumulative Impact	Mitigation Measure(s)	Impact After Mitigation
5. Unique Geologic Features	Alternative 1: No Impact Alternatives 2–5: Less than Significant	Alternative 1: No Impact Alternatives 2–5: Less than Significant	No Mitigation Required	Alternative 1: No Impact Alternatives 2–5: Less than Significant
<i>2.9 Greenhouse Gas Emissions and Climate Change</i>				
1. Conflict with the San Diego County Climate Action Plan	Alternative 1: Less than Significant Alternatives 2–5: Significant	Alternative 1: Less than Significant Alternatives 2–5: Significant	M-GC.1-1	Alternatives 1–5: Less than Significant
<i>2.10 Hazards and Hazardous Materials</i>				
1. Transport, Use, Disposal, or Accidental Release of Hazardous Materials; Hazards to Schools; and Existing Hazardous Materials Sites	Alternatives 1–5: Less than Significant	Alternatives 1–5: Less than Significant	No Mitigation Required	Alternatives 1–5: Less than Significant
2. Airports	Alternative 1: No Impact Alternatives 2–5: Less than Significant	Alternative 1: No Impact Alternatives 2–5: Less than Significant	No Mitigation Required	Alternative 1: No Impact Alternatives 2–5: Less than Significant
3. Emergency Response and Evacuation Plans	Alternative 1: No Impact Alternatives 2–5: Less than Significant	Alternative 1: No Impact Alternatives 2–5: Less than Significant	No Mitigation Required	Alternative 1: No Impact Alternatives 2–5: Less than Significant
4. Vectors	Alternative 1: No Impact Alternatives 2–5: Less than Significant	Alternative 1: No Impact Alternatives 2–5: Less than Significant	No Mitigation Required	Alternative 1: No Impact Alternatives 2–5: Less than Significant

Issue Topic	Potential Direct Impact	Potential Cumulative Impact	Mitigation Measure(s)	Impact After Mitigation
<i>2.11 Hydrology and Water Quality</i>				
1. Water Quality Standards and Requirements and Consistency with Water Quality Control Plans	Alternatives 1–5: Less than Significant	Alternatives 1–5: Less than Significant	No Mitigation Required	Alternatives 1–5: Less than Significant
2. Substantial Decrease of Groundwater Supplies or Interfere Substantially with Groundwater Recharge	Alternative 1: Less than Significant Alternatives 2–5: Significant	Alternative 1: Less than Significant Alternatives 2–5: Significant	M-HYD.2-1	Alternative 1: Less than Significant Alternatives 2–5: Significant and Unavoidable
3. Consistency with Sustainable Groundwater Management Plans	Alternative 1: No Impact Alternatives 2–5: Less than Significant	Alternative 1: No Impact Alternatives 2–5: Less than Significant	No Mitigation Required	Alternative 1: No Impact Alternatives 2–5: Less than Significant
<i>2.12 Land Use and Planning</i>				
1. Conflict with Land Use Plans, Policies, or Regulations	Alternative 1: No Impact Alternatives 2–5: Less than Significant	Alternative 1: No Impact Alternatives 2–5: Less than Significant	No Mitigation Required	Alternative 1: No Impact Alternatives 2–5: Less than Significant
<i>2.13 Noise</i>				
1. Excessive Temporary (Construction-Related) Noise Levels	Alternative 1: Less than Significant Alternatives 2–5: Significant	Alternatives 1–5: Less than Significant	M-N.1-1	Alternative 1: Less than Significant Alternatives 2–5: Significant and Unavoidable
2. Excessive Long-Term Stationary Noise Levels	Alternative 1: Less than Significant Alternatives 2–5: Significant	Alternatives 1–5: Less than Significant	M-N.2-1	Alternatives 1–5: Less than Significant
3. Excessive Long-Term Traffic Noise Levels	Alternatives 1–5: Less than Significant	Alternatives 1–5: Less than Significant	No Mitigation Required	Alternatives 1–5: Less than Significant
4. Excessive Groundborne Vibration	Alternatives 1–5: Less than Significant	Alternatives 1–5: Less than Significant	No Mitigation Required	Alternatives 1–5: Less than Significant

Issue Topic	Potential Direct Impact	Potential Cumulative Impact	Mitigation Measure(s)	Impact After Mitigation
<i>2.14 Population and Housing</i>				
1. Unplanned Population Growth	Alternatives 1–5: Less than Significant	Alternatives 1–5: Less than Significant	No Mitigation Required	Alternatives 1–5: Less than Significant
<i>2.15 Public Services</i>				
1. Fire Protection Services	Alternative 1: No Impact Alternatives 2-5: Less than Significant	Alternative 1: No Impact Alternatives 2-5: Less than Significant	No Mitigation Required	Alternative 1: No Impact Alternatives 2-5: Less than Significant
2. Police Protection Services	Alternative 1: No Impact Alternatives 2-5: Less than Significant	Alternative 1: No Impact Alternatives 2-5: Less than Significant	No Mitigation Required	Alternative 1: No Impact Alternatives 2-5: Less than Significant
<i>2.16 Transportation</i>				
1. Conflict with a Program, Plan, Ordinance, or Policy Addressing the Circulation System	Alternative 1: No Impact Alternatives 2–5: Less than Significant	Alternative 1: No Impact Alternatives 2–5: Less than Significant	No Mitigation Required	Alternative 1: No Impact Alternatives 2–5: Less than Significant
2. Exceed the Threshold for VMT	Alternative 1: Less than Significant Alternatives 2–5: Significant	Alternative 1: Less than Significant Alternatives 2–5: Significant	M-TR.2-1	Alternative 1: Less than Significant Alternatives 2–5: Significant and Unavoidable
3. Substantially Increase Hazards due to a Design Feature	Alternative 1: No Impact Alternatives 2–5: Less than Significant Impact	Alternative 1: No Impact Alternatives 2–5: Less than Significant Impact	No Mitigation Required	Alternative 1: No Impact Alternatives 2–5: Less than Significant Impact
4. Result in Inadequate Emergency Access	Alternative 1: No Impact Alternatives 2–5: Less than Significant	Alternative 1: No Impact Alternatives 2–5: Less than Significant	No Mitigation Required	Alternative 1: No Impact Alternatives 2–5: Less than Significant

Issue Topic	Potential Direct Impact	Potential Cumulative Impact	Mitigation Measure(s)	Impact After Mitigation
<i>2.17 Tribal Cultural Resources</i>				
1. Substantial Adverse Change in the Significance of Tribal Cultural Resources	Alternatives 1-5: Less than Significant	Alternatives 1-5: Less than Significant	No Mitigation Required	Alternatives 1-5: Less than Significant
<i>2.18 Utilities and Service Systems</i>				
1. Adequate Water Supplies	Alternative 1: Less than Significant Alternatives 2-5: Significant	Alternative 1: Less than Significant Alternatives 2-5: Significant	M-UT.1-1 M-UT.1-2	Alternative 1: Less than Significant Alternatives 2-5: Significant and Unavoidable
2. Adequate Wastewater Treatment Facilities	Alternatives 1-5: Less than Significant	Alternatives 1-5: Less than Significant	No Mitigation Required	Alternatives 1-5: Less than Significant
3. Sufficient Landfill Capacity and Solid Waste Regulations	Alternatives 1-5: Less than Significant	Alternatives 1-5: Less than Significant	No Mitigation Required	Alternatives 1-5: Less than Significant
<i>2.19 Wildfire</i>				
1. Increase the Risk of Wildland Fire Ignition	Alternatives 1-5: Less than Significant	Alternatives 1-5: Less than Significant	No Mitigation Required	Alternatives 1-5: Less than Significant
2. Exacerbate Wildfire Risks Due to Slope, Prevailing Winds, and Other Factors	Alternatives 1-5: Less than Significant	Alternatives 1-5: Less than Significant	No Mitigation Required	Alternatives 1-5: Less than Significant
3. Install Infrastructure That Exacerbates Fire Risk	Alternatives 1-5: Less than Significant	Alternatives 1-5: Less than Significant	No Mitigation Required	Alternatives 1-5: Less than Significant
4. Expose People or Structures to Post-Fire Risks	Alternatives 1-5: Less than Significant	Alternatives 1-5: Less than Significant	No Mitigation Required	Alternatives 1-5: Less than Significant

**Table S.2 Summary of the Environmental Effects of the Alternatives
Relative to Those of the Proposed Project**

Environmental Topic	Alternative 2: Proposed Project—Cannabis Program Consistent with State Requirements	Alternative 1: No Project—Retention of Current Cannabis Regulations	Alternative 3: Cannabis Program with Expanded County Regulations	Alternative 4: Cannabis Program with Outdoor Cannabis Cultivation Prohibition	Alternative 5: Cannabis Program with Maximum 1 Acre of Outdoor Cannabis Cultivation Canopy
Aesthetics	Significant and unavoidable	Less (LTS, eliminates SU impact)	Similar	Less	Similar
Agriculture and Forest Resources	No impact	Similar (NI)	Similar (NI)	Similar (NI)	Similar (NI)
Air Quality	Significant and unavoidable (odor impacts only)	Less (LTS, eliminates SU impact)	Less	Less (LTS, eliminates SU impact)	Less
Biological Resources	Less than significant (with mitigation)	Less	Similar	Less	Similar
Cultural and Paleontological Resources	Less than significant	Less	Similar	Less	Similar
Energy	Less than significant (with mitigation)	Less	Similar	Less	Similar
Geology, Soils, and Mineral Resources	Less than significant	Less	Similar	Less	Similar
Greenhouse Gas Emissions and Climate Change	Less than significant (with mitigation)	Less	Similar	Less	Similar
Hazards and Hazardous Materials	Less than significant	Less	Similar	Less	Similar
Hydrology and Water Quality	Significant and unavoidable (groundwater supply impacts only)	Less (LTS, eliminates SU impact)	Similar	Less	Similar
Land Use and Planning	Less than significant	Less (NI)	Similar	Similar	Similar
Noise	Significant and unavoidable (construction noise impacts only)	Less (LTS, eliminates SU impact)	Similar	Similar	Similar
Population, and Housing	Less than significant	Less	Similar	Similar	Similar
Public Services	Less than significant	Less (NI)	Similar	Similar	Similar

Environmental Topic	Alternative 2: Proposed Project—Cannabis Program Consistent with State Requirements	Alternative 1: No Project—Retention of Current Cannabis Regulations	Alternative 3: Cannabis Program with Expanded County Regulations	Alternative 4: Cannabis Program with Outdoor Cannabis Cultivation Prohibition	Alternative 5: Cannabis Program with Maximum 1 Acre of Outdoor Cannabis Cultivation Canopy
Transportation	Significant and unavoidable (vehicle miles traveled impacts only)	Less (LTS, eliminates SU impact)	Similar	Similar	Similar
Tribal Cultural Resources	Less than significant	Less	Similar	Less	Similar
Utilities and Service Systems	Significant and unavoidable (water supply impacts only)	Less (LTS, eliminates SU impact)	Similar	Less	Similar
Wildfire	Less than significant	Less	Similar	Less	Similar

Notes: NI = no impact; LTS = less than significant; SU = significant and unavoidable.

Source: Compiled by Ascent in 2024.



COUNTY OF SAN DIEGO

APPLICATION FOR COUNTY OF SAN DIEGO BOARD, COMMISSION, OR COMMITTEE

Item 6c

INSTRUCTIONS: Please complete this form in its entirety. Be sure to include the full title of the Board, Commission or Committee for which you desire consideration. Note the additional requirements listed at the bottom of the second page.

(For Official Use Only)

Please note that this application is a public record subject to disclosure. This application will be active for a period of one year. After one year, it is necessary to file a new application for another year of eligibility.

Submit the completed application to the Clerk of the Board of Supervisors, BCC Desk, 1600 Pacific Highway, Room 402, San Diego, CA 92101-2471 or via e-mail at bcc@sdcounty.ca.gov

Form with fields for Last Name (Van Liew), First Name (Edward), Name of Board (Hidden Meadows Community Sponsor Group), and District (District 5).

Form asking if the applicant can schedule time accordingly, with Yes/No options and a field for time restrictions.

Form asking for principal areas of interest in County Government, with the example 'Planning and land usage'.

Form for listing current County Boards, Commissions or Committees, including a checkbox for 'Not a current member' and columns for Name and Date Appointed.

Form for listing past County appointments with dates served, including a checkbox for 'Not a current member' and columns for Name and Dates Served.

STATEMENT OF OCCUPATIONAL EXPERIENCE

Self employed/retired	
<hr/>	
<i>Current Employer</i>	
Inventor	6 Years
<i>Job Title</i>	<i>Length of Employment</i>

Previous Employers	Position Title	Length of Employment
Foxconn	Sr. Director of R&D/ VP of Innovation	7 year
Hewlett Packard	Senior Director of Quality Engineering	22 years
CA	CA	CA
CA	CA	CA

What experience or special knowledge can you bring to your area(s) of interest?
Problem solving, leadership, innovation, process control, and common sense.

Please list community organizations to which you belong:
Escondido Creek Conservancy - Board Member

Please describe your ethnic origin:
WHITE (not of Hispanic Origin): All persons having origins in any of the original peoples of Europe

Select the gender you identify as:
Male

What is your age?
45-54 years old

What is your total income?
[REDACTED]

NOTE: Candidates for the Assessment Appeals Board, County Hearing Officer, Eye Gnat Abatement

Appeals Board, Fly Abatement and Appeals Board and/or Planning Commission, are required to submit evidence of their qualifications and a Statement of Incompatible Activities Related to County Duties (Form 519) that can be found on the Clerk of the Board's website at: www.sandiegocounty.gov/content/sdc/cob/forms.html. Candidates may be asked to provide additional information.

Membership qualifications for all County Boards, Commissions and Committees may be accessed through the Clerk of the Board's website at www.sandiegocounty.gov/cob/bcac/ or by calling (619) 531-5600. This Application will be considered complete when such requirements are provided by the applicant.

By signing below, I declare that the information provided above is accurate and complete to the best of my knowledge.

Edward Van Liew

2/12/2025

Applicant's Signature

Date