

SOURCE: Fuscoe Engineering 2017

DUDEK

Newland Sierra Project Draft Resource Protection Plan

FIGURE 6C
Jurisdictional Resources

INTENTIONALLY LEFT BLANK

Project Site		Vegetation Communities	
	On-site		AGR, Agriculture
	Off-site		CLOW, Coast live oak woodland
	RPO Wetlands		CSS, Diegan coastal sage scrub
Jurisdictional Wetlands			CSS-CHP, Coastal sage - chaparral transition
	ACOE/CDFW/RWQCB/RPO COUNTY WETLANDS		CSSB, Coastal sage scrub - Baccharis dominated
	CDFW/COUNTY RPO WETLANDS		DEV, Urban/developed
	ACOE/CDFW/RWQCB WETLANDS		DH, Disturbed habitat
	CDFW ONLY		DW, Disturbed Wetland
Jurisdictional Waters (ACOE/CDFW/RWQCB)			E-AGR, Agriculture
	Ephemeral		EUC, Eucalyptus woodland
	Intermittent		FWM, Freshwater marsh
	Perennial		I-AGR, Intensive agriculture
			IA, Intensive agriculture
			MFS, Mulefat scrub
			NNG, Non-native grassland
			NNW, Non-native Woodland
			ORC, Orchard and vineyards
			ORF, Southern coast live oak riparian forest
			SMX, Southern mixed chaparral
			SOC, Scrub oak chaparral
			SWS, Southern willow scrub
			SWS/TS, Southern willow scrub/tamarisk scrub
			dBSC, Flat-topped buckwheat - disturbed
			dCLOW, Coast Live Oak Woodland - disturbed
			dCSS, Diegan coastal sage scrub - disturbed
			dCSSB, Coastal sage scrub - Baccharis dominated - disturbed
			dSMX, Southern mixed chaparral - disturbed

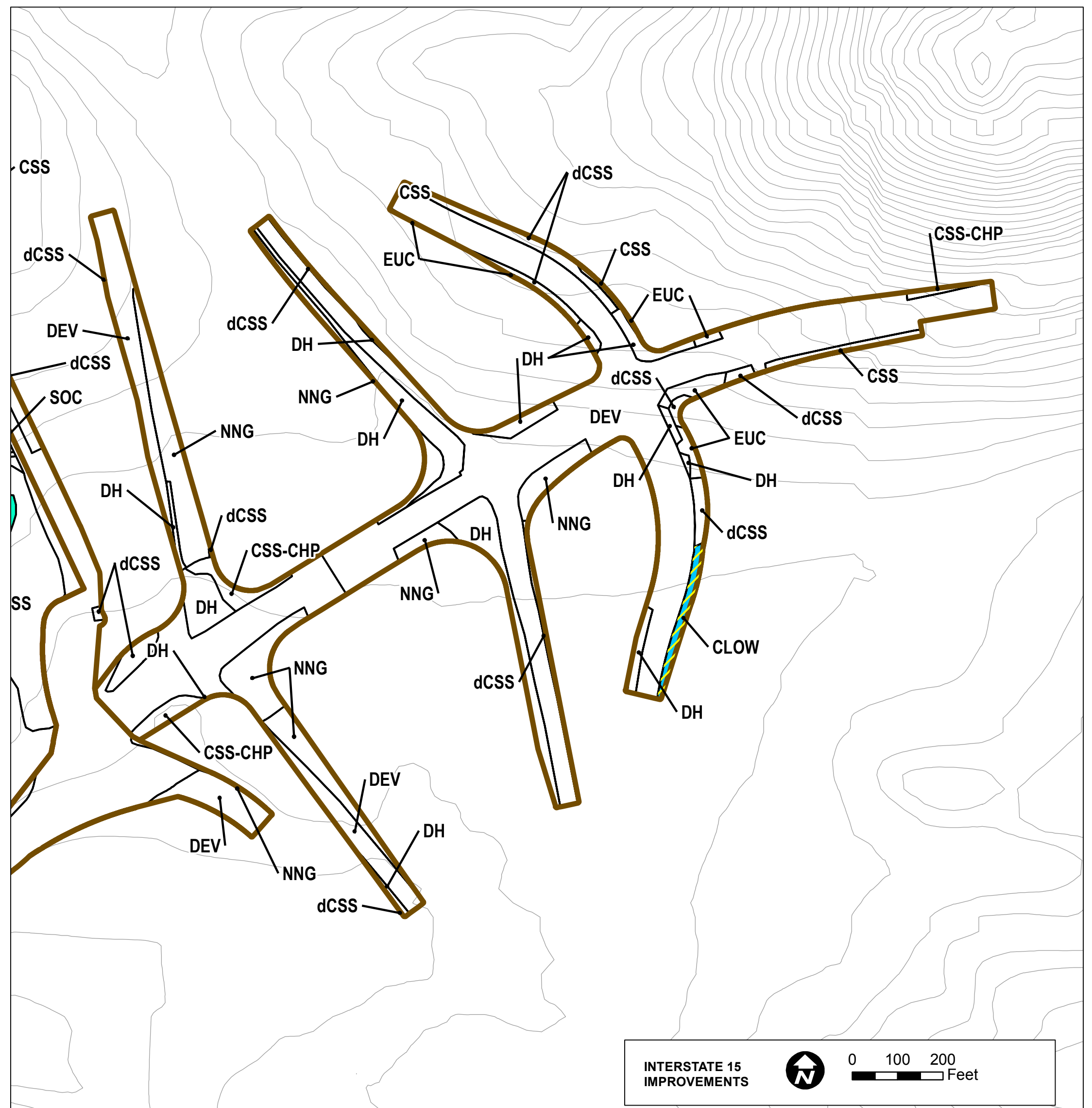
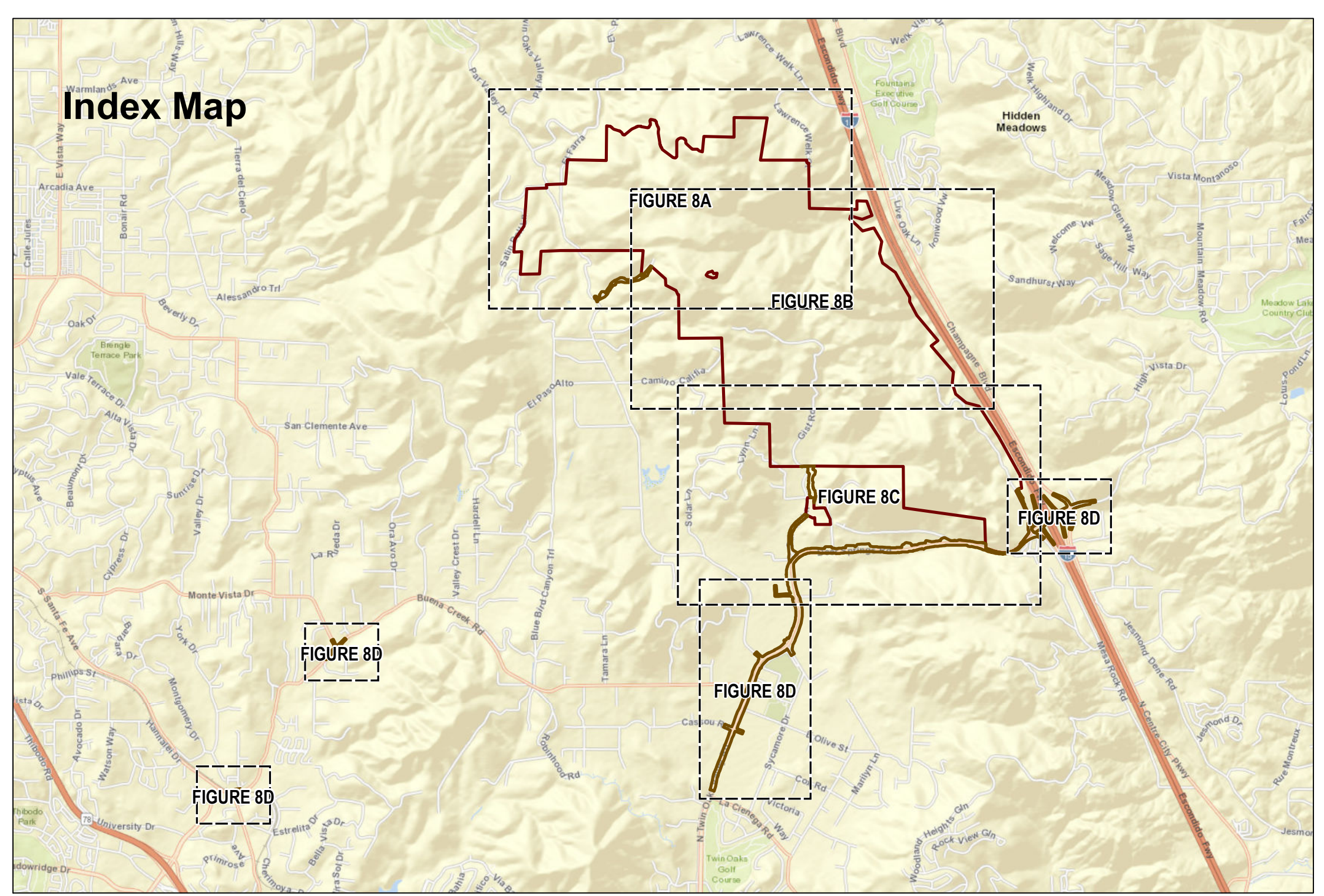
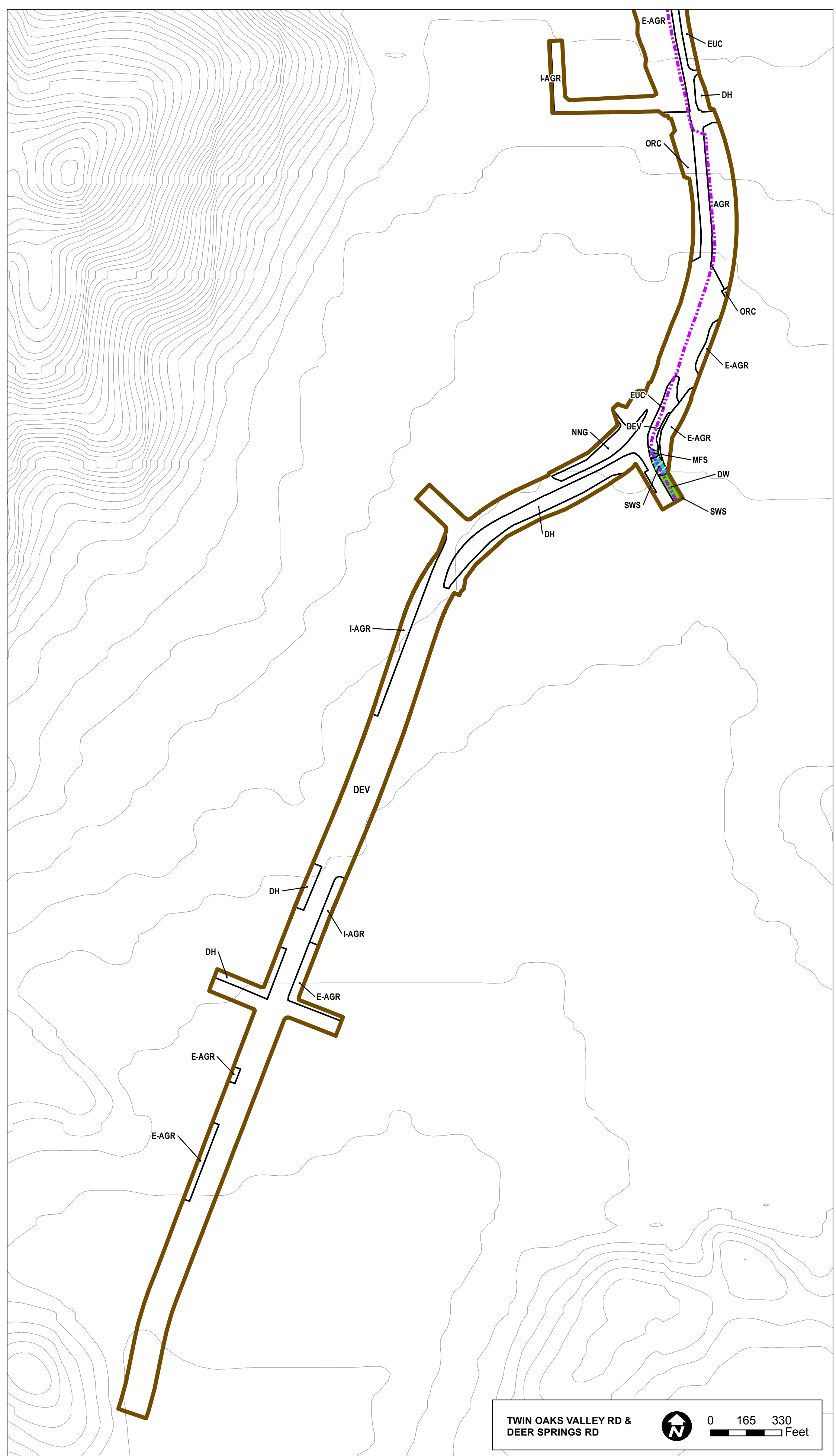
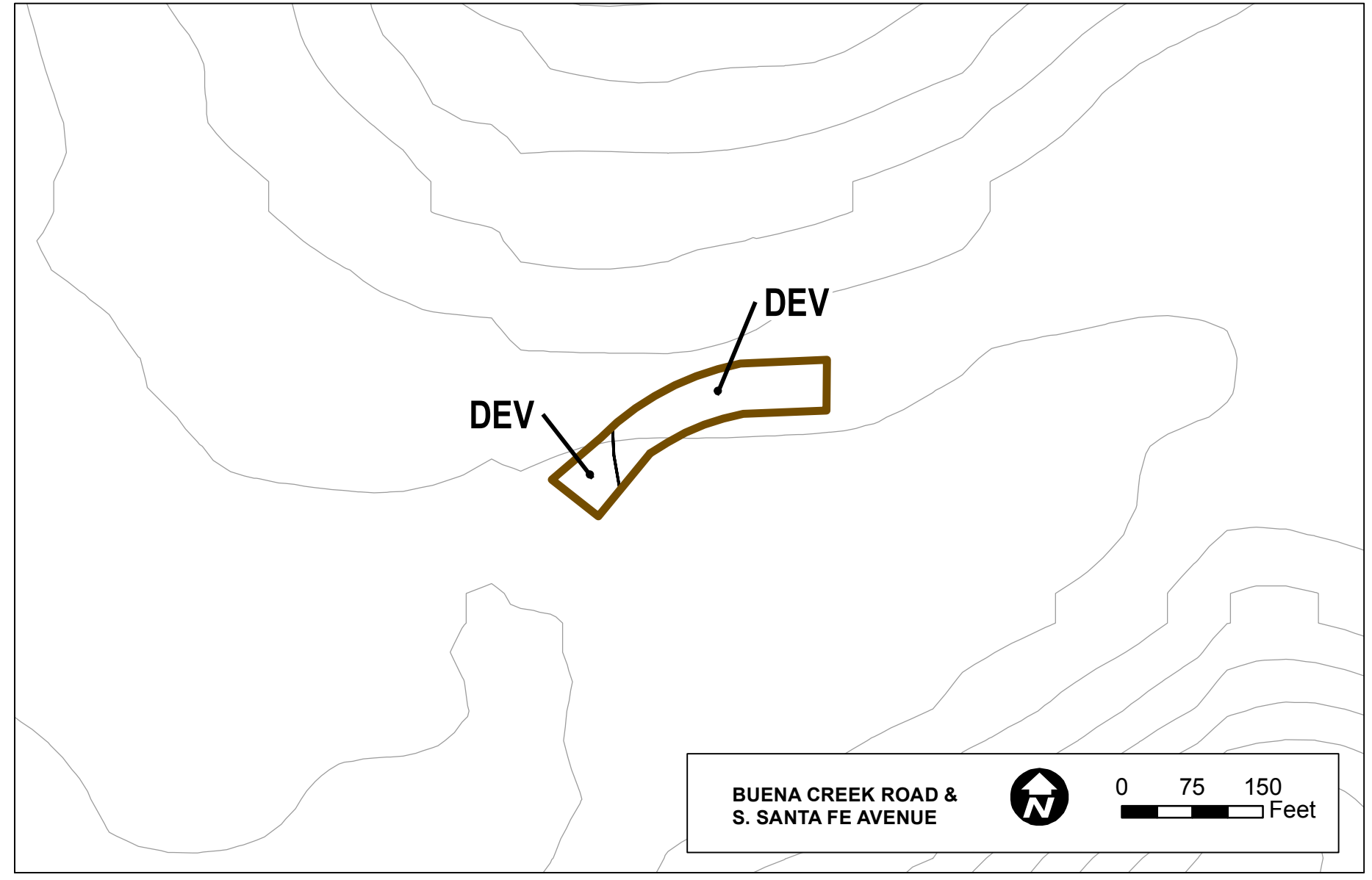
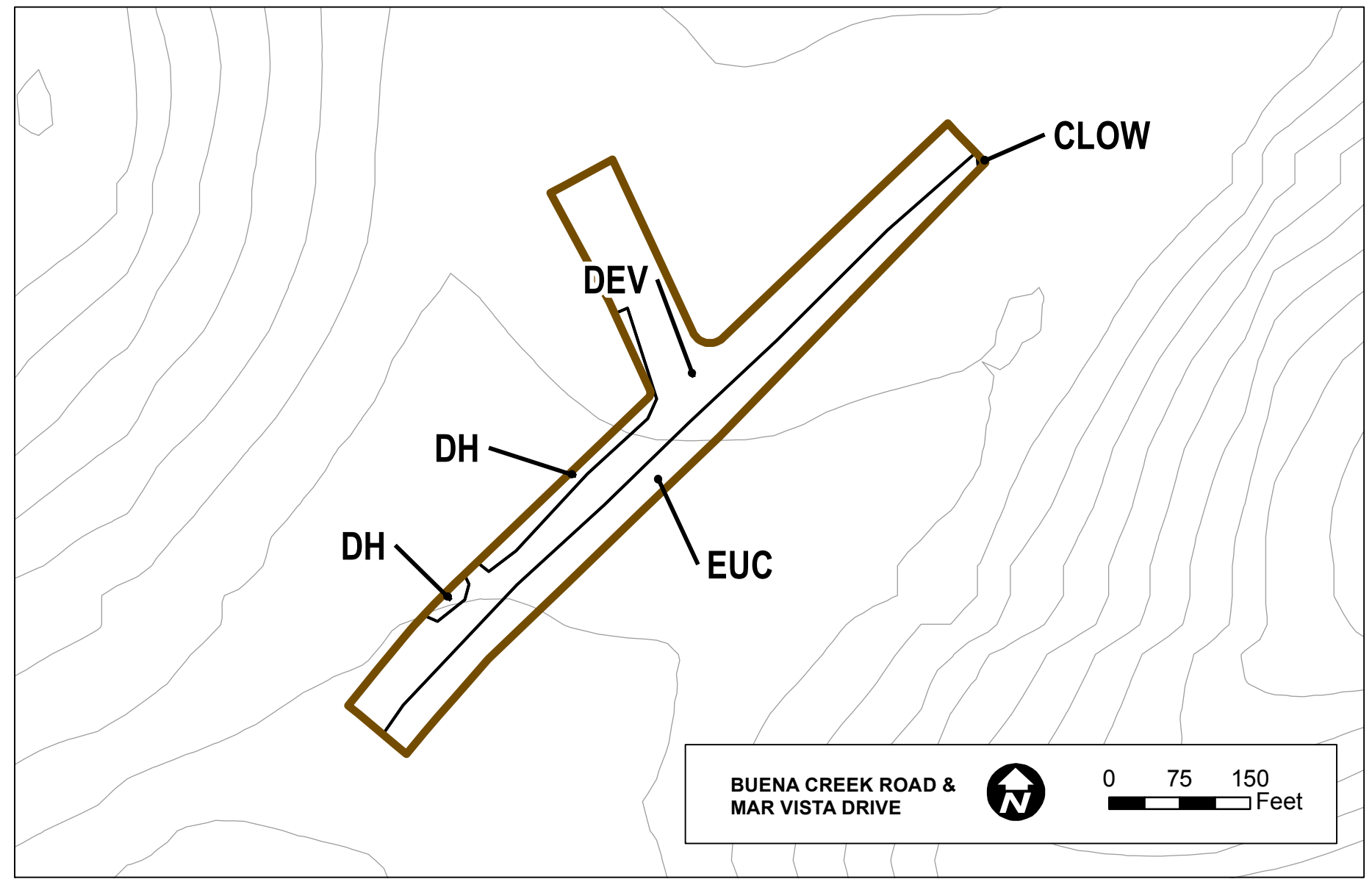

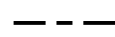


FIGURE 6D
Jurisdictional Resources

INTENTIONALLY LEFT BLANK

Date: 4/12/2017 - Last saved by: lterry - Path: Z:\Projects\1760801\MAPDOC\MAPS\Tech Reports\ResourceProtectionPlan\Figure6E_ID_Offsite_Sewer_TOV\RD.mxd

 100-Ft Buffer Of 30-Ft Sewer Easement

 Proposed Sewer Line

 Vegetation Mapping

Jurisdictional Wetlands

 ACOE/CDFW/RWQCB/RPO COUNTY WETLANDS

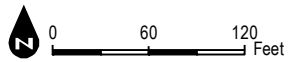
Vegetation Communities/Land Covers

ARU, Arundo Dominated Riparian

DEV, Urban Developed Ornamental

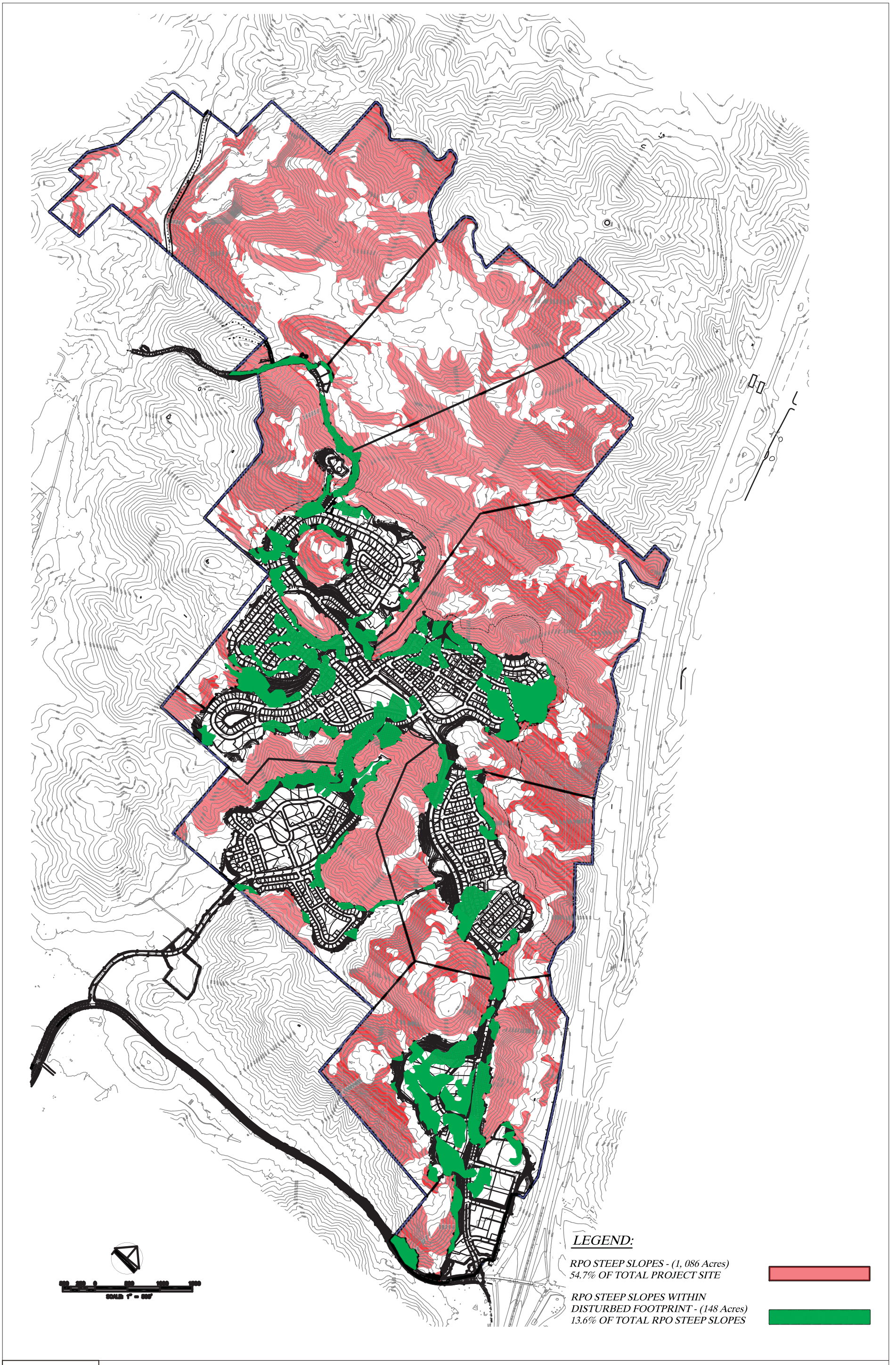
DH, Disturbed Habitat

SWS, Southern Willow Scrub



SANDAG Technical Services - GIS

INTENTIONALLY LEFT BLANK



SOURCE: FUSCOE ENGINEERING 2016

INTENTIONALLY LEFT BLANK