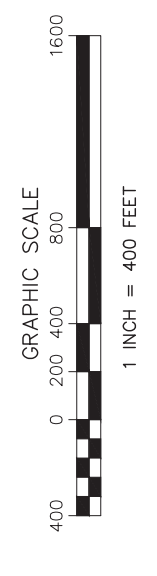
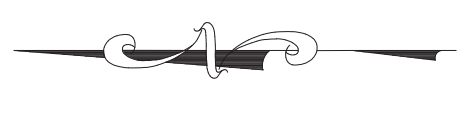
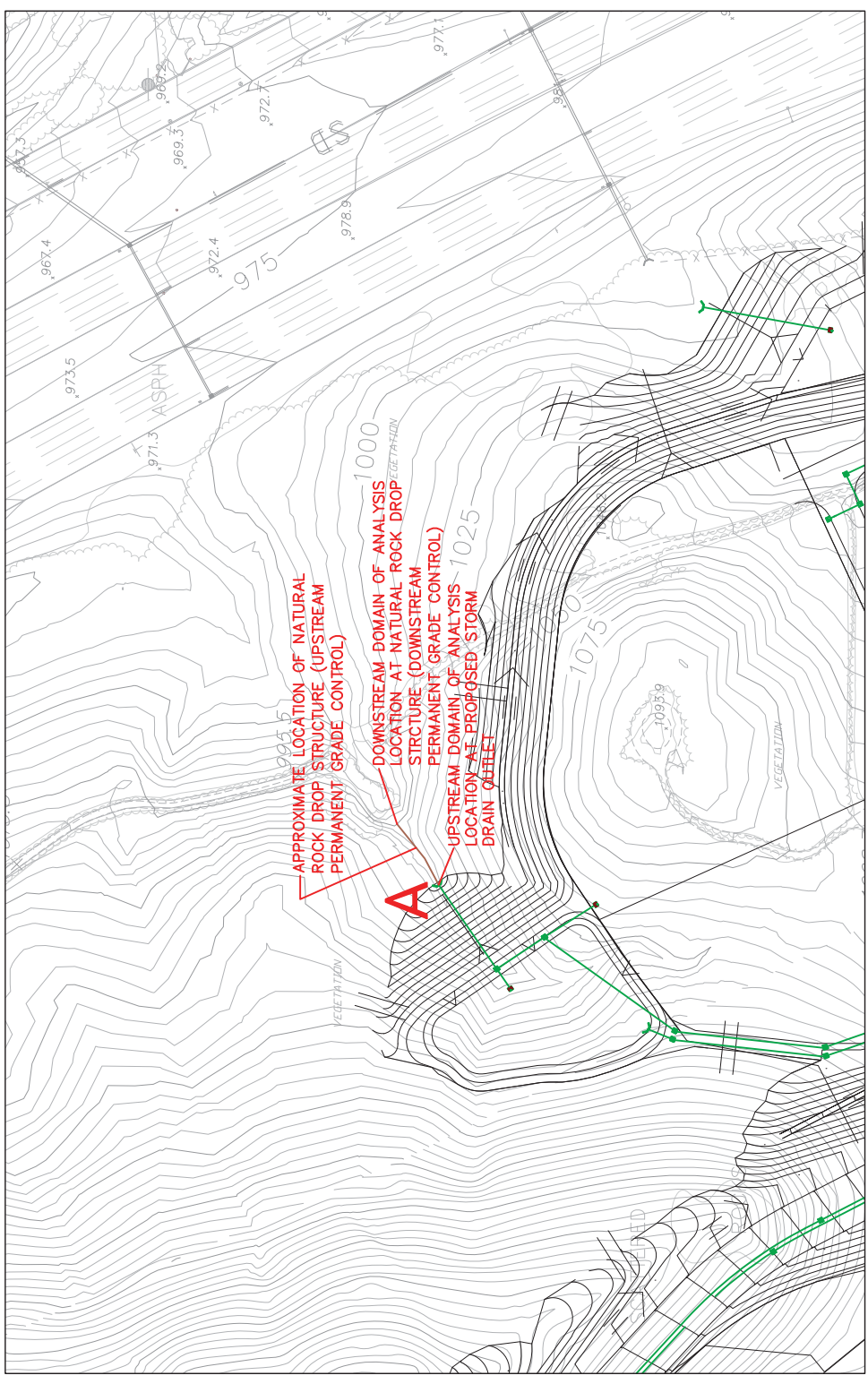


# NEWLAND SIERRA STUDY AREA EXHIBIT

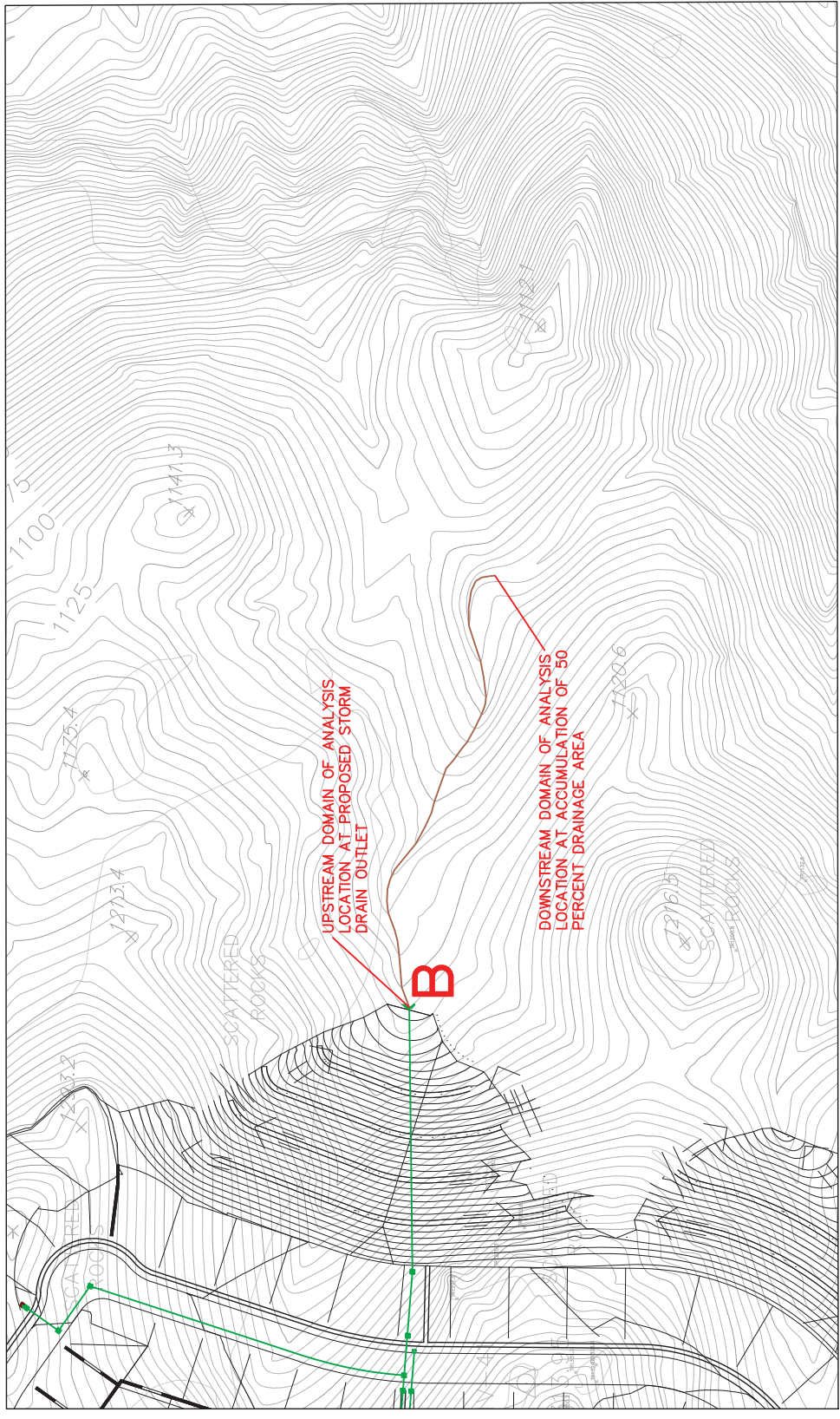


PLAN - STUDY AREA  
AND DRAINAGE BASINS  
SCALE 1"=400'

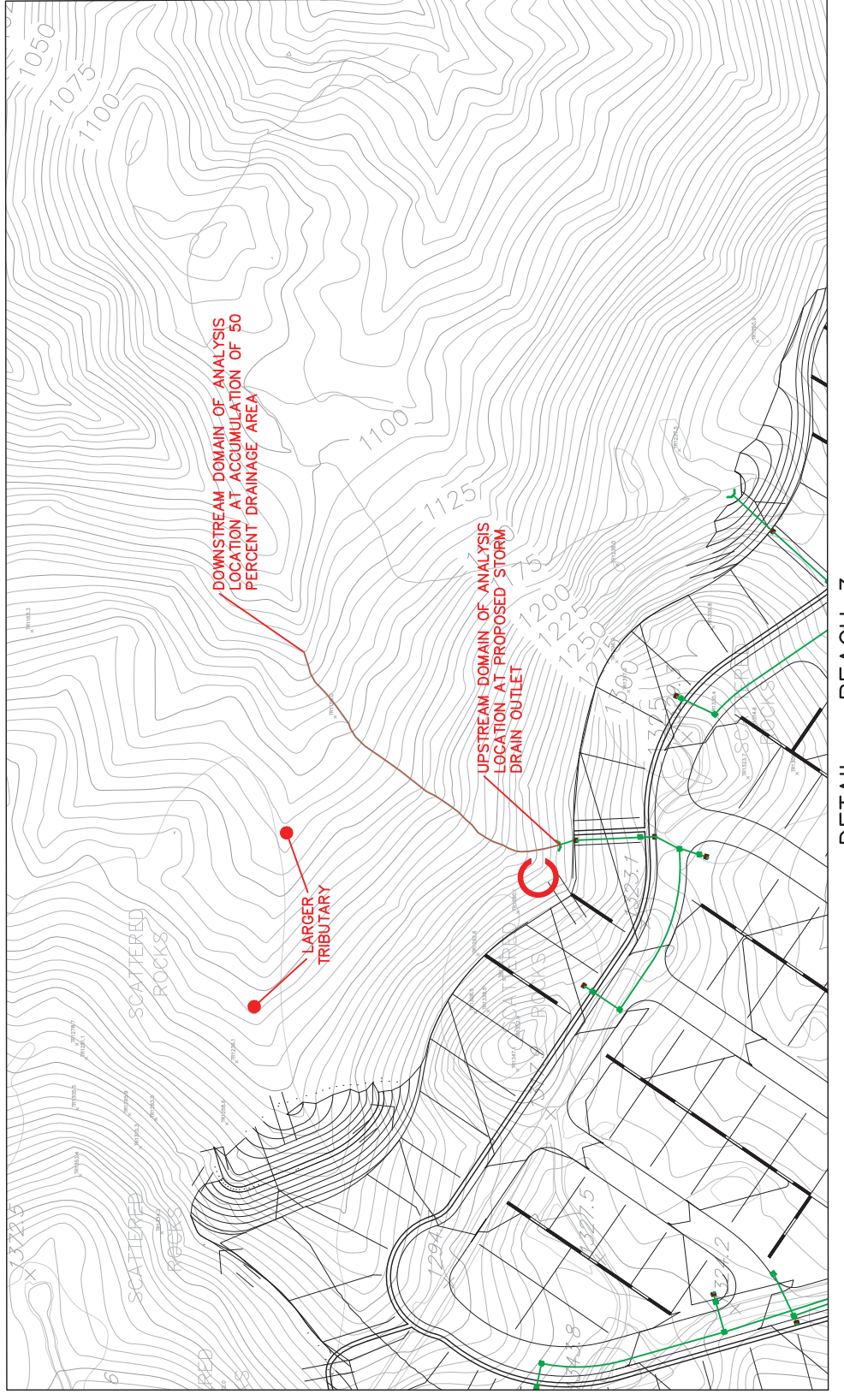
- LEGEND
- PROPERTY BOUNDARY
  - PROPOSED GRADING
  - PROPOSED STORM DRAIN
  - R2 STUDY REACH (OVERLAND NATURAL FLOW PATH)
  - 123.04 AC DRAINAGE BASIN AREA
  - A POINT OF COMPLIANCE



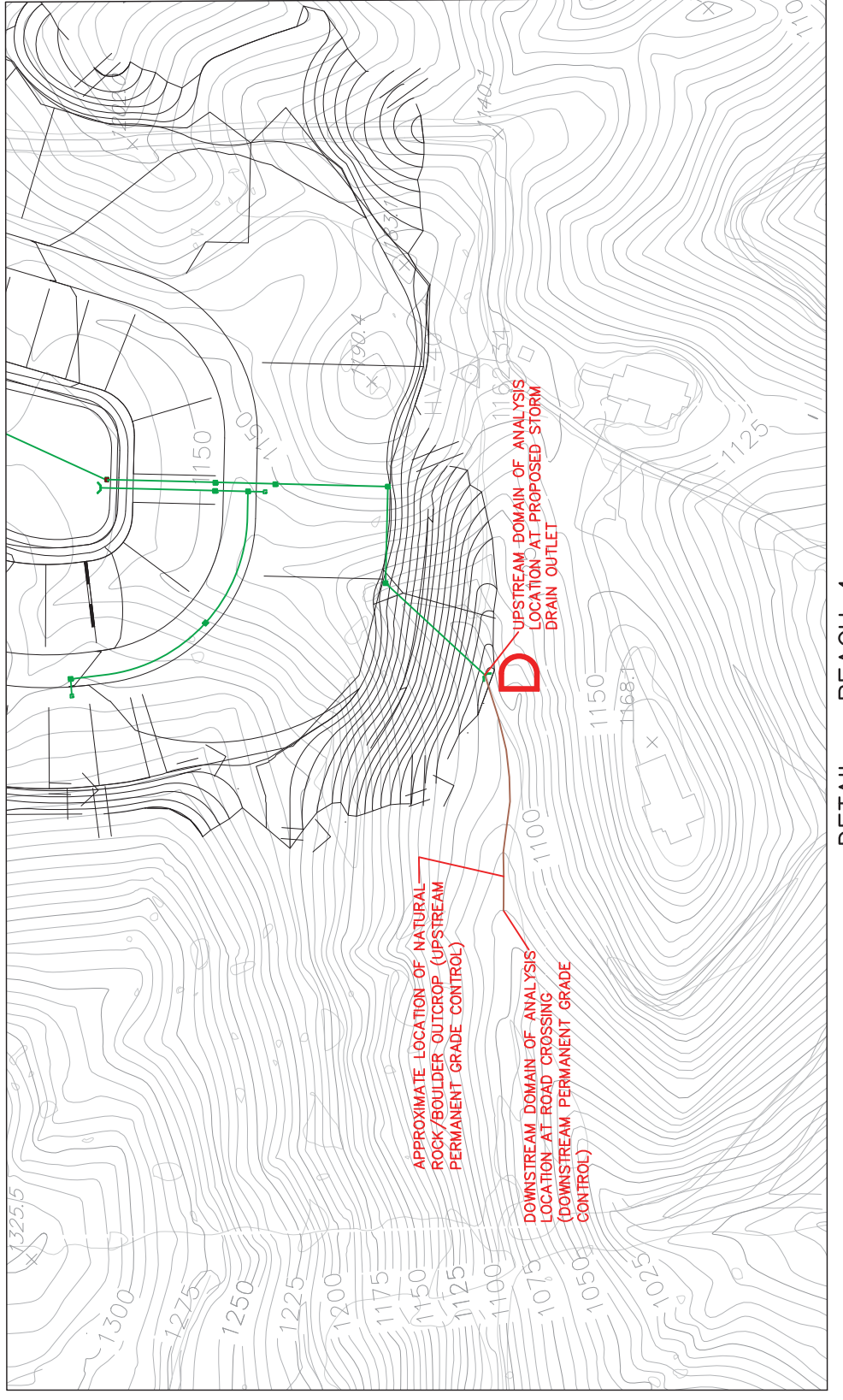
DETAIL - REACH 1  
SCALE 1"=100'



DETAIL - REACH 2  
SCALE 1"=100'



DETAIL - REACH 3  
SCALE 1"=100'



DETAIL - REACH 4  
SCALE 1"=100'



PHOTO No. 7



PHOTO No. 8

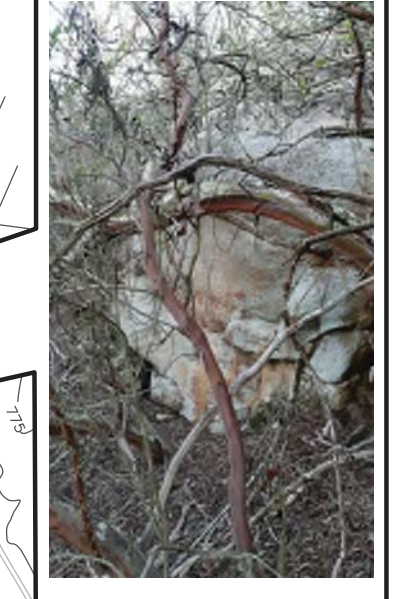


PHOTO No. 5



PHOTO No. 4



PHOTO No. 6

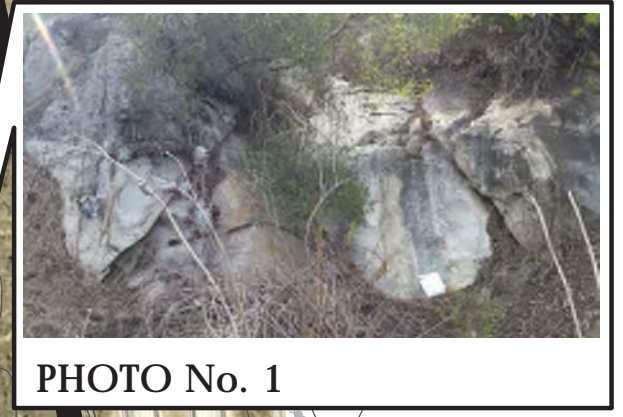


PHOTO No. 1



PHOTO No. 19



PHOTO No. 20



PHOTO No. 21



PHOTO No. 2



PHOTO No. 3



PHOTO No. 10

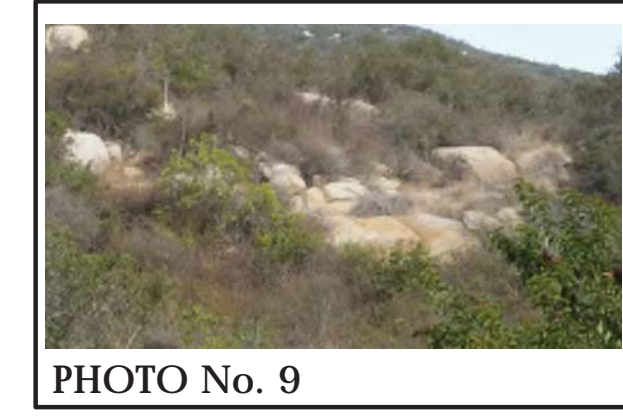
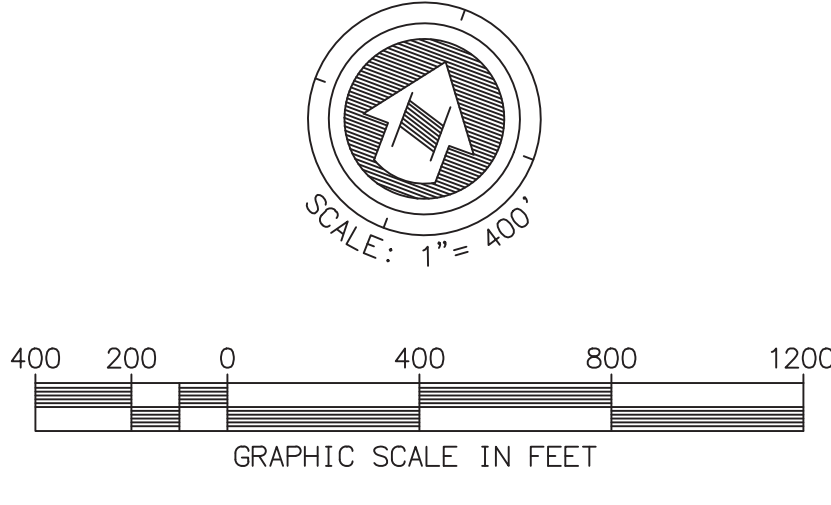


PHOTO No. 9



**NEWLAND SIERRA  
CCSYA PHOTO EXHIBIT  
DECEMBER 2016**

PHOTO 1: Aerial view of a rocky slope with sparse vegetation. PHOTO 2: Aerial view of a rocky slope with sparse vegetation. PHOTO 3: Aerial view of a rocky slope with sparse vegetation. PHOTO 4: Aerial view of a rocky slope with sparse vegetation. PHOTO 5: Close-up of a rocky outcrop with a small plant. PHOTO 6: Aerial view of a rocky slope with sparse vegetation. PHOTO 7: Aerial view of a rocky, sparsely vegetated slope. PHOTO 8: Aerial view of a rocky slope with sparse vegetation. PHOTO 9: Aerial view of a rocky slope with sparse vegetation. PHOTO 10: Aerial view of a rocky slope with sparse vegetation. PHOTO 19: Aerial view of a rocky slope with sparse vegetation. PHOTO 20: Aerial view of a rocky slope with sparse vegetation. PHOTO 21: Aerial view of a rocky slope with sparse vegetation.