

San Pasqual Valley Groundwater Basin Sustainable Groundwater Management Act Advisory Committee Meeting

GSP Development
Undesirable Results



January 9, 2020



- Review
 - Meeting Objectives
 - Meeting Summary
 - Final Advisory Committee Bylaws
 - November 7 Technical Peer Review Recap
- GSP Content Review
 - SGMA Terminology
 - GSP Workplan
 - Plan Area
 - Hydrogeologic Conceptual Model
 - Groundwater Conditions
- Undesirable Results
- Public Comment



San Pasqual Valley GSP Advisory Committee Meeting

REVIEW



- Meeting Objectives
 - Share GSP content describing physical conditions
 - GSP Sections: Plan Area, Hydrogeologic Conceptual Model, and Groundwater Conditions
 - Explain the SGMA term: Undesirable Results
 - Gain input from stakeholders on what is undesirable and what is desirable regarding groundwater
- Meeting Summary and Bylaws
 - Handout 1

- Received Technical Input on:
 - GSP outline
 - Approach to develop Plan Area, Hydrogeologic Conceptual Model, and Groundwater Conditions
 - Review proposed monitoring well sites
 - Bottom of basin discussion
 - Requested data
- Mission Statement and Principles of Participation
 - Modified per AC input
 - Accepted by TPR



- SGMA Terminology
- GSP Workplan (Handout #2)
- Project Schedule
- Plan Area
- Hydrogeologic Conceptual Model
- Groundwater Conditions





SGMA Terminology

- Sustainable Groundwater Management Act – SGMA
- Groundwater Sustainability Agency – GSA
- Groundwater Sustainability Plan – GSP
- Sustainable Management Criteria – SMC
- Projects and Management Actions – PMAs
- Hydrogeologic Conceptual Model – HCM
- State Water Resources Control Board – SWRCB

Introduction and public engagement

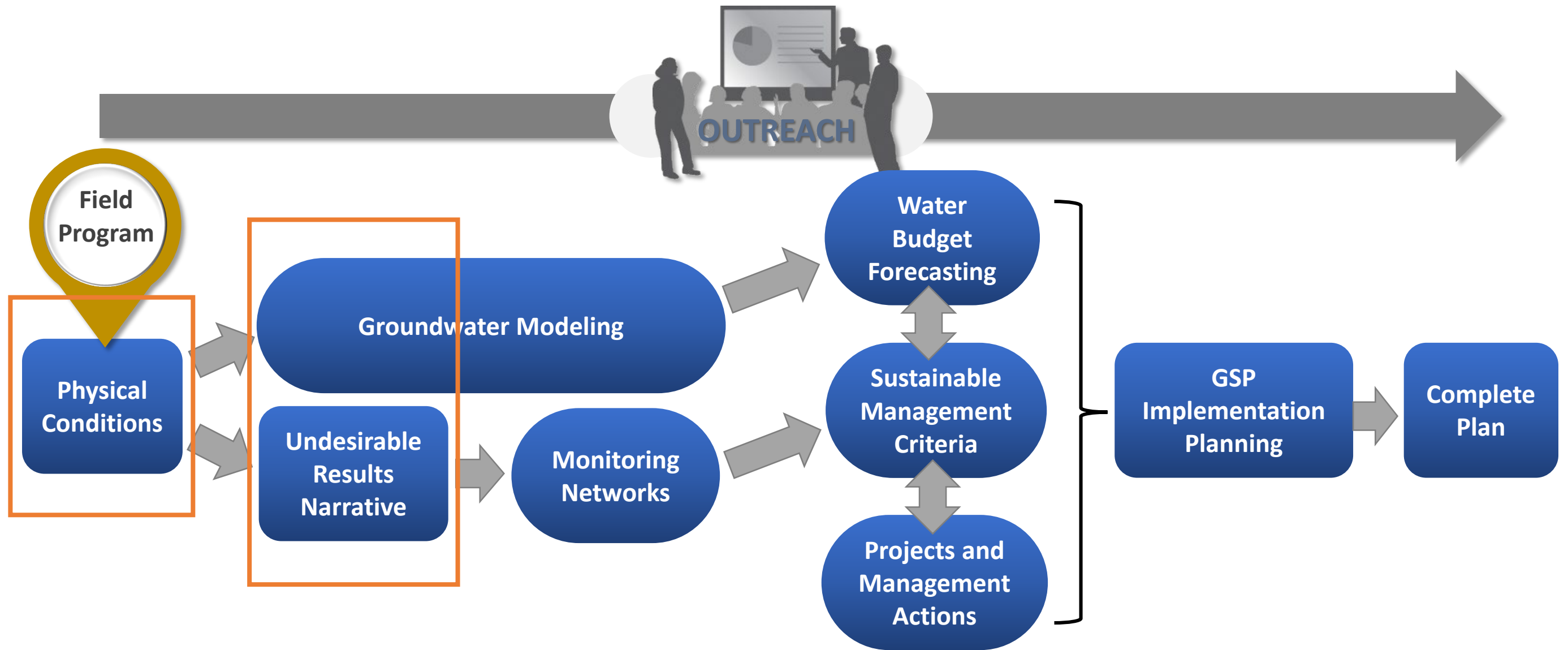
Physical conditions (plan area, HCM, groundwater conditions)

Water budget and groundwater flow model

Monitoring program and data management system

Sustainable management criteria

Projects and management actions and Implementation





GSP Schedule

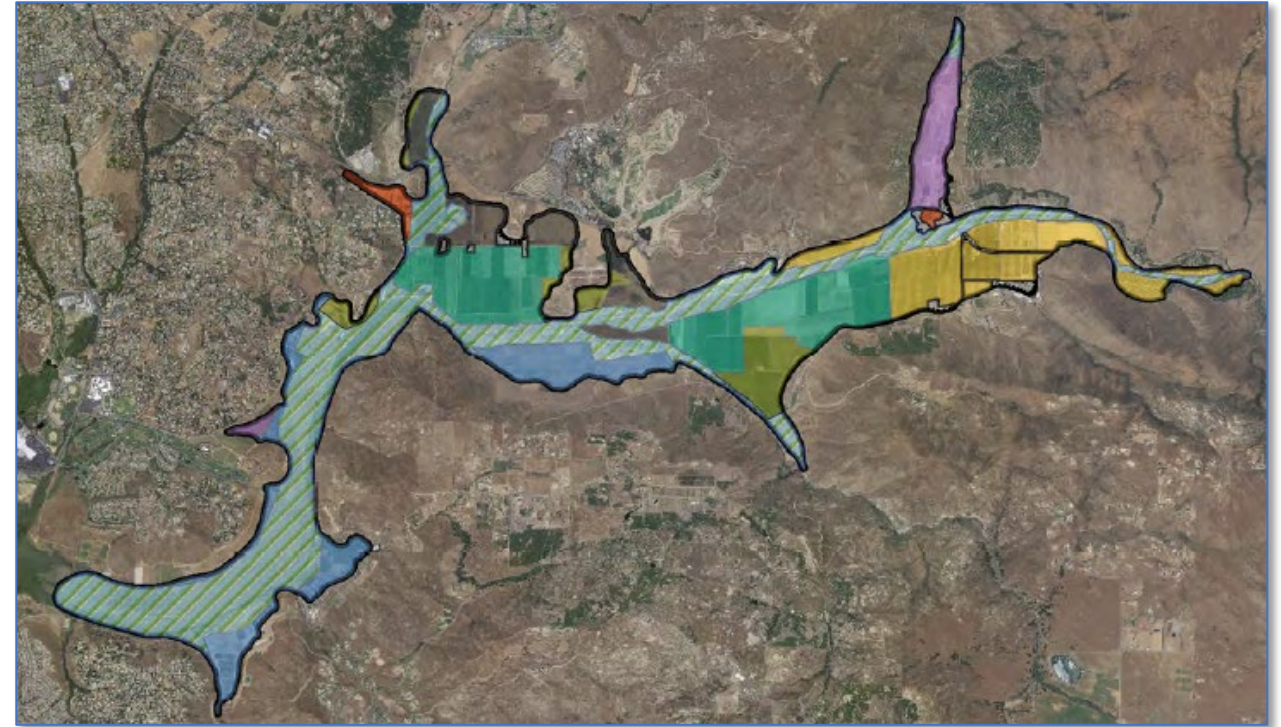
Year	Quarter	Advisory Committee Topics	Technical Peer Review Topics	Outreach	Plan Area, HCM, GW Conditions	Model Development and Water Budgets	Monitoring and DMS	Undesirable Results and Sustainable Management Criteria	Projects and Management Actions and Implementation	Field Program	GSP Compilation
2019	Q4	<ul style="list-style-type: none"> Introduce the consulting team Initiate data collection efforts Review GSP development process Review communications plan 	<ul style="list-style-type: none"> TPR schedule Data Collection Section 2: Plan Area Section 3: Hydrogeologic Conceptual Model Section 4: Groundwater Conditions 								
2020	Q1	<ul style="list-style-type: none"> Hydrogeologic Conceptual Model Groundwater Conditions Undesirable Results Introduction 	<ul style="list-style-type: none"> Section 2: Plan Area Section 3: Hydrogeologic Conceptual Model Section 4: Groundwater Conditions Section 6: Undesirable results, Groundwater model approach <ul style="list-style-type: none"> - Model code - Model data 								
2020	Q2	<ul style="list-style-type: none"> Undesirable Results Groundwater Model Overview Sustainable Management Criteria Review Field Program Update 	<ul style="list-style-type: none"> Section 6: Undesirable results, Groundwater model approach <ul style="list-style-type: none"> - Model code - Model data Groundwater model check in <ul style="list-style-type: none"> - calibration - Fate and transport Section 7: Monitoring Networks Section 8: Sustainable Management Criteria 							Completed Analysis: <div style="border: 1px solid black; padding: 5px; margin-top: 10px;"> Physical Conditions Sections: Section 2: Plan Area Section 3: Hydrogeologic Conceptual Model Section 4: Groundwater Conditions </div>	

San Pasqual Valley GSP Advisory Committee Meeting

GSP CONTENT



- Describes conditions on the ground surface
 - Jurisdictions and management
 - Land uses
 - Well infrastructure



- Plan Area Boundary
- GSA Boundary
- Neighboring Basins

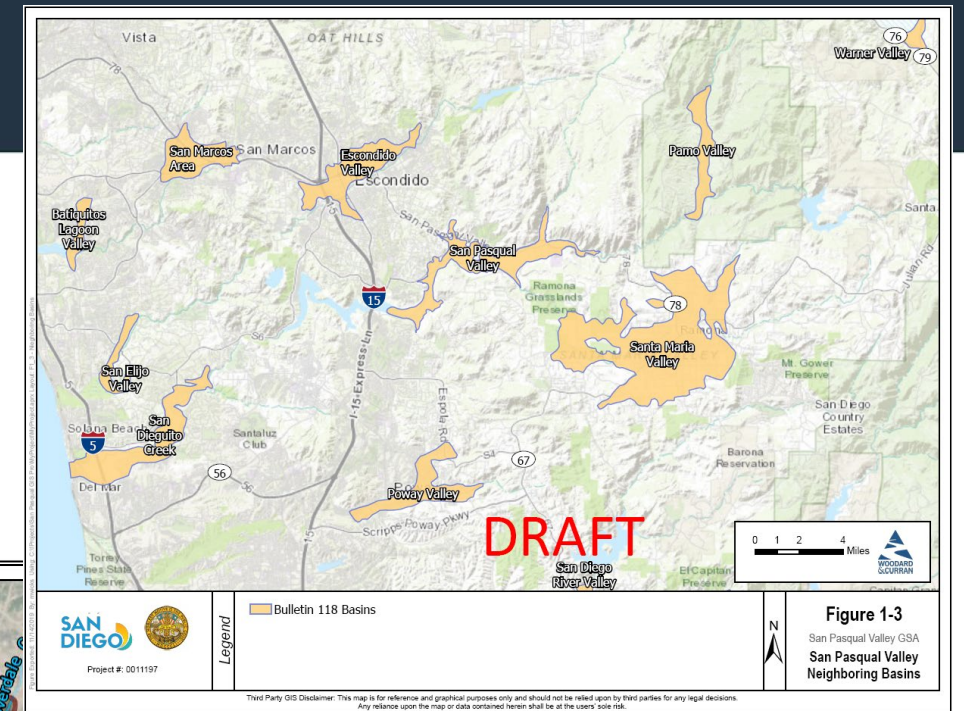


Figure 1-3
San Pasqual Valley GSA
San Pasqual Valley
Neighboring Basins

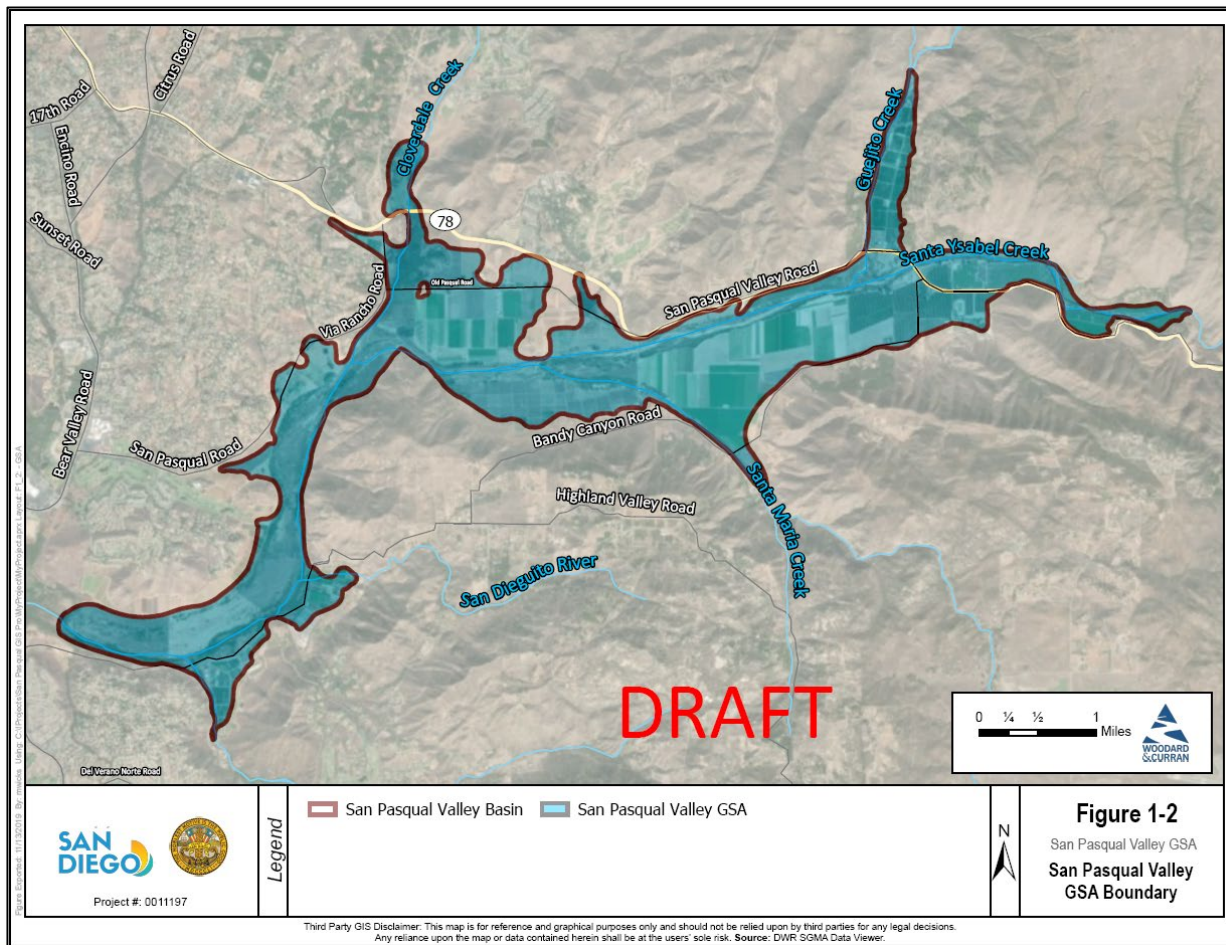


Figure 1-2
San Pasqual Valley GSA
San Pasqual Valley
GSA Boundary

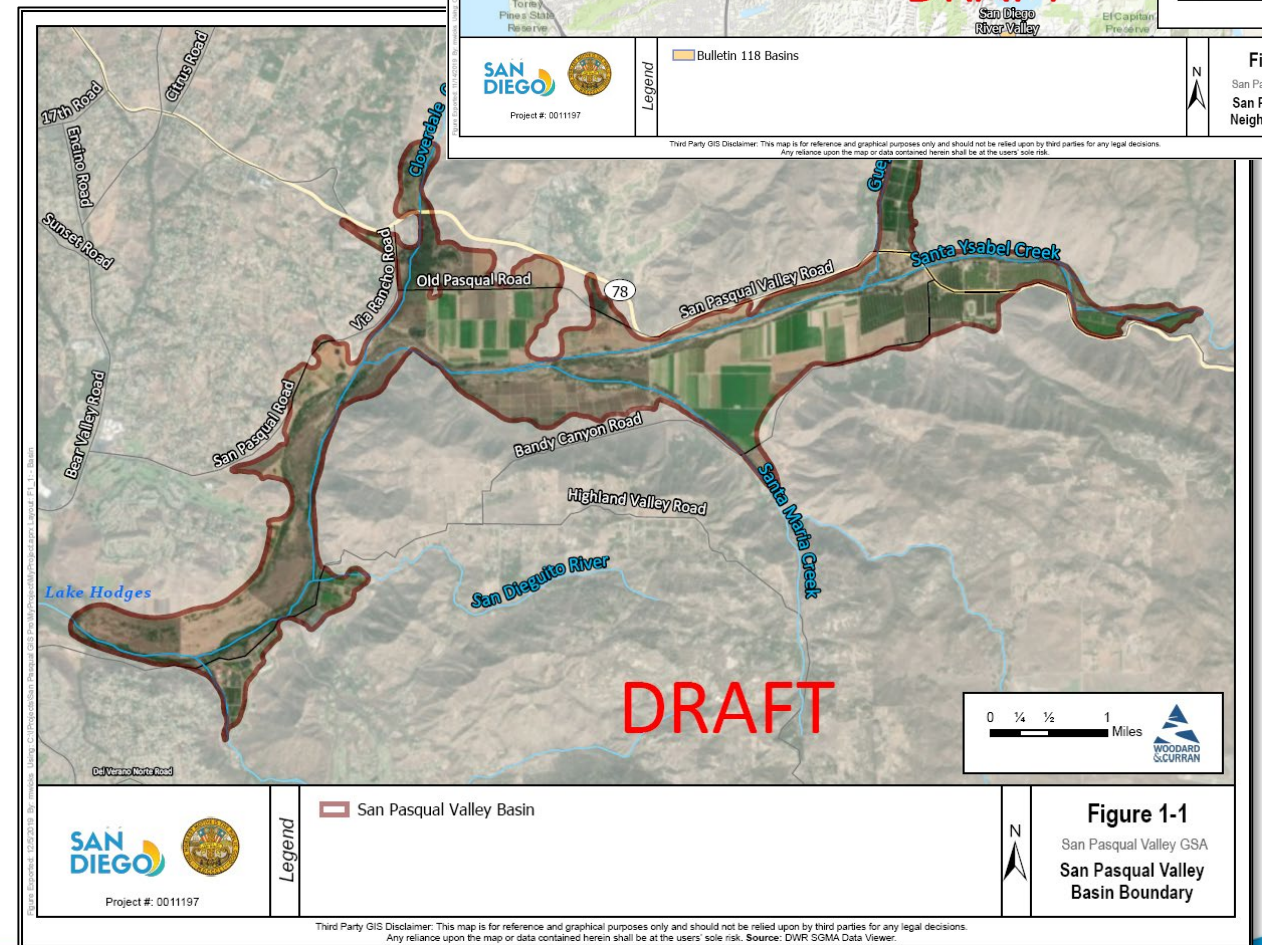
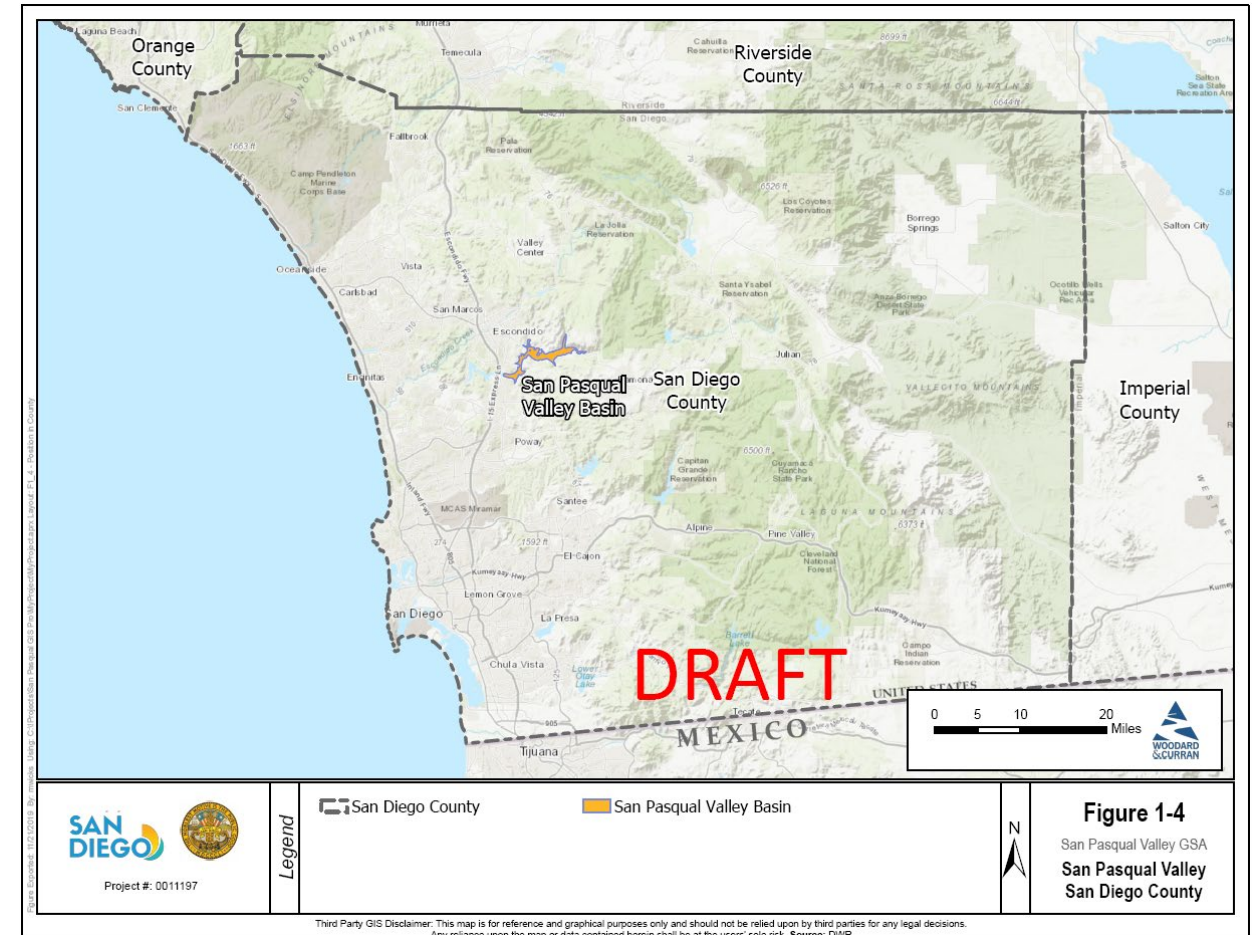
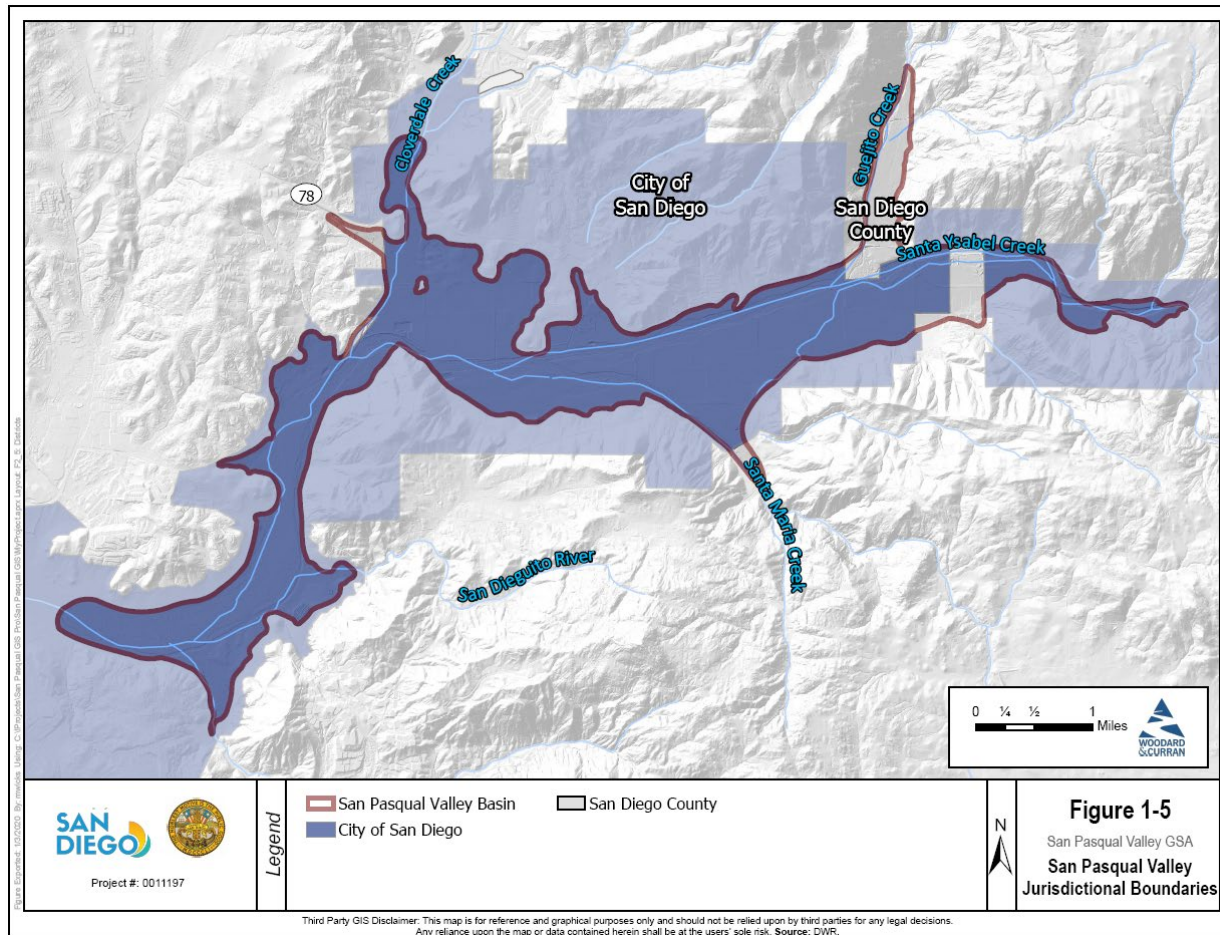


Figure 1-1
San Pasqual Valley GSA
San Pasqual Valley
Basin Boundary

Third Party GIS Disclaimer: This map is for reference and graphical purposes only and should not be relied upon by third parties for any legal decisions. Any reliance upon the map or data contained herein shall be at the user's sole risk. Source: DWR, SGMA Data Viewer.

- Location in County
- Local Jurisdictions



- Land Use

- From SanDAG/SanGIS

- 1986

- 1990

- 1995

- 2000

- 2004

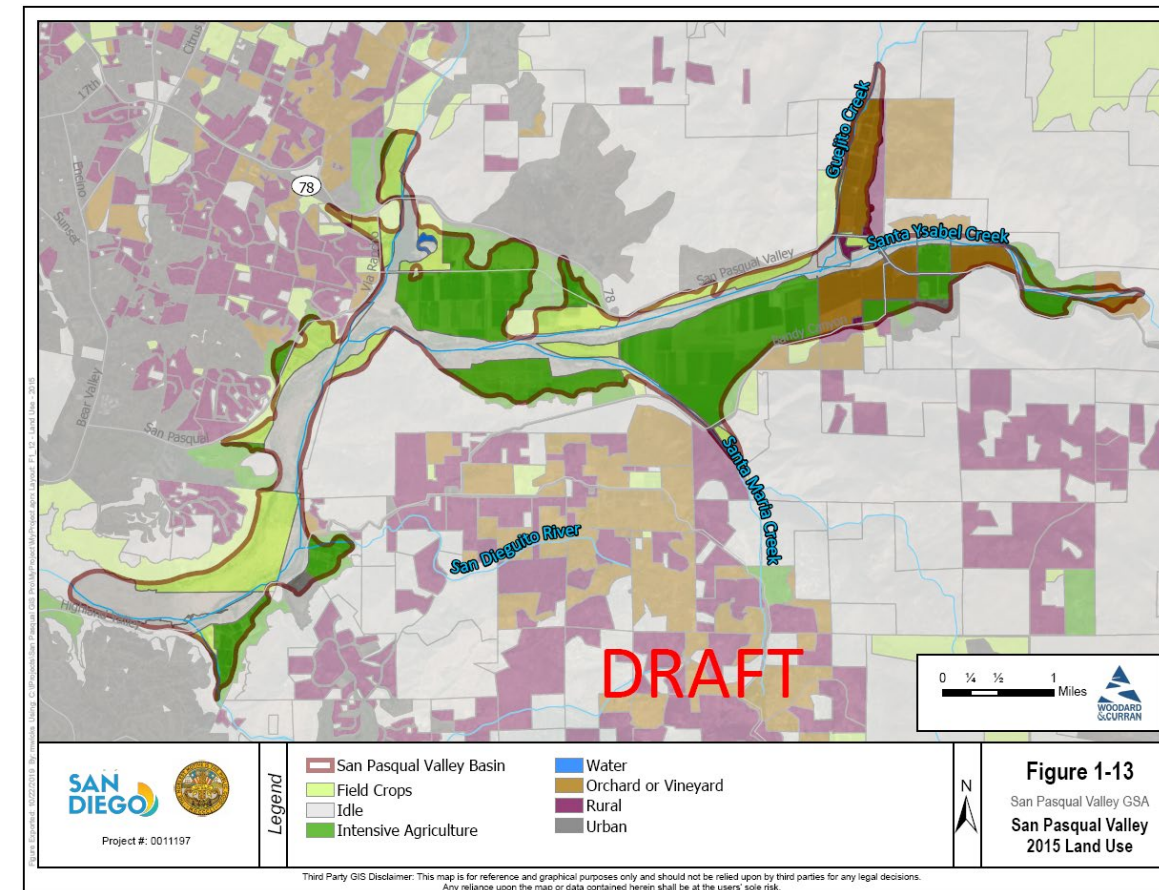
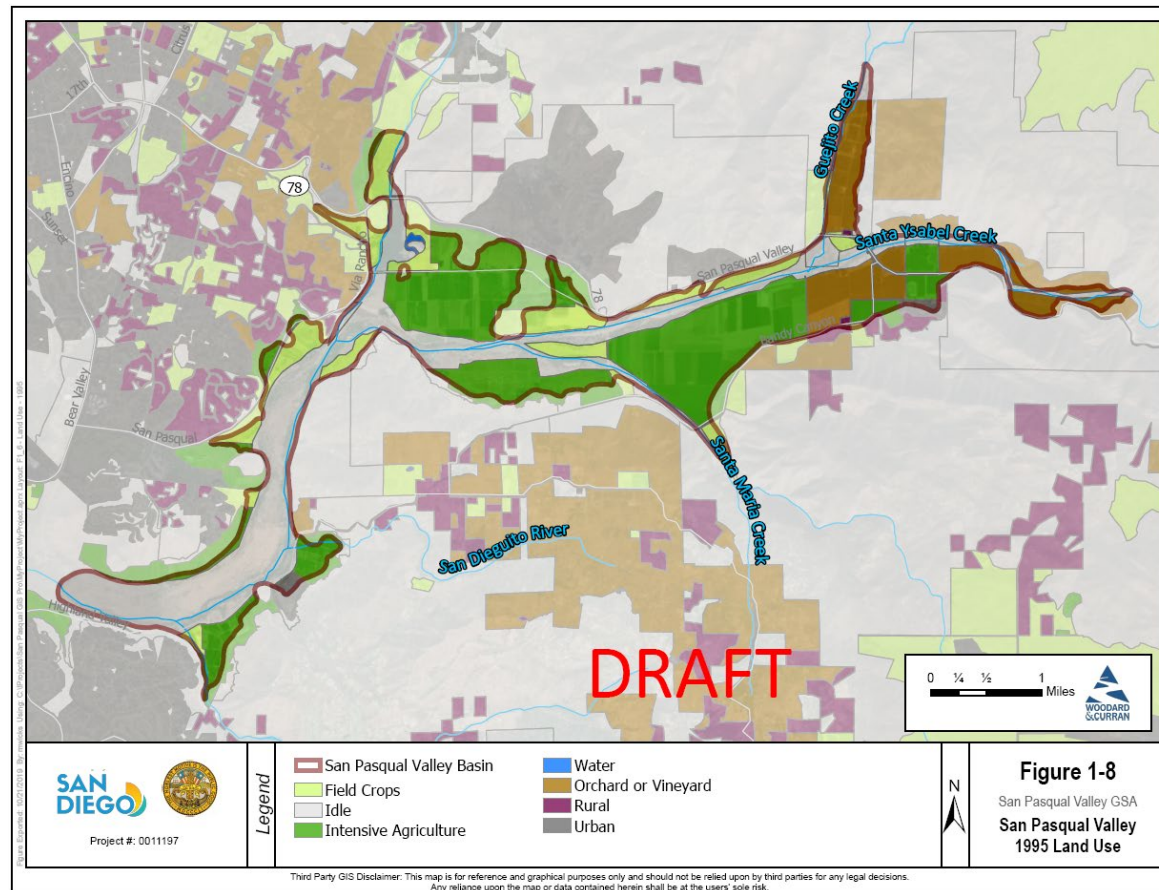
- 2008

- 2013

- 2015

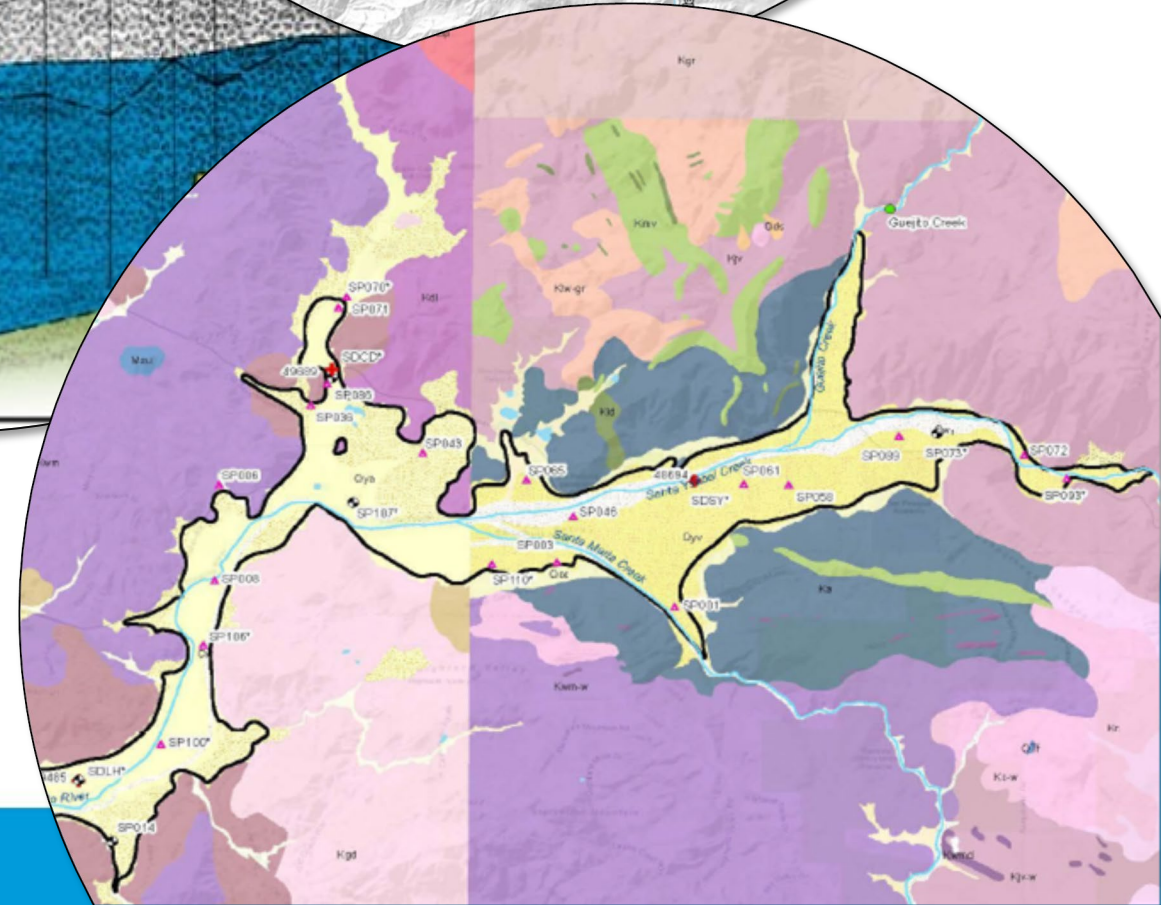
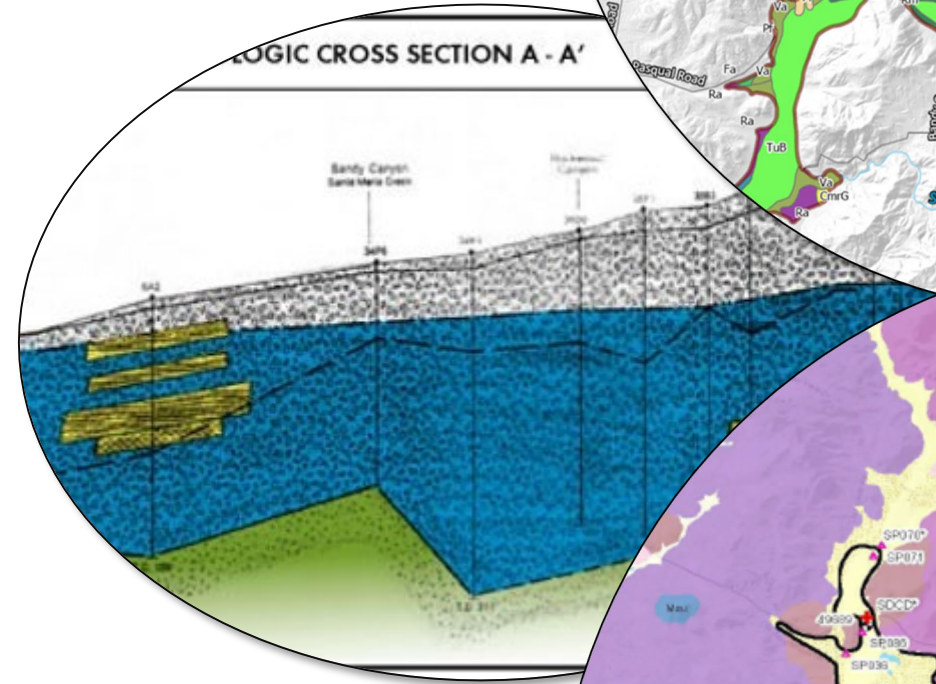
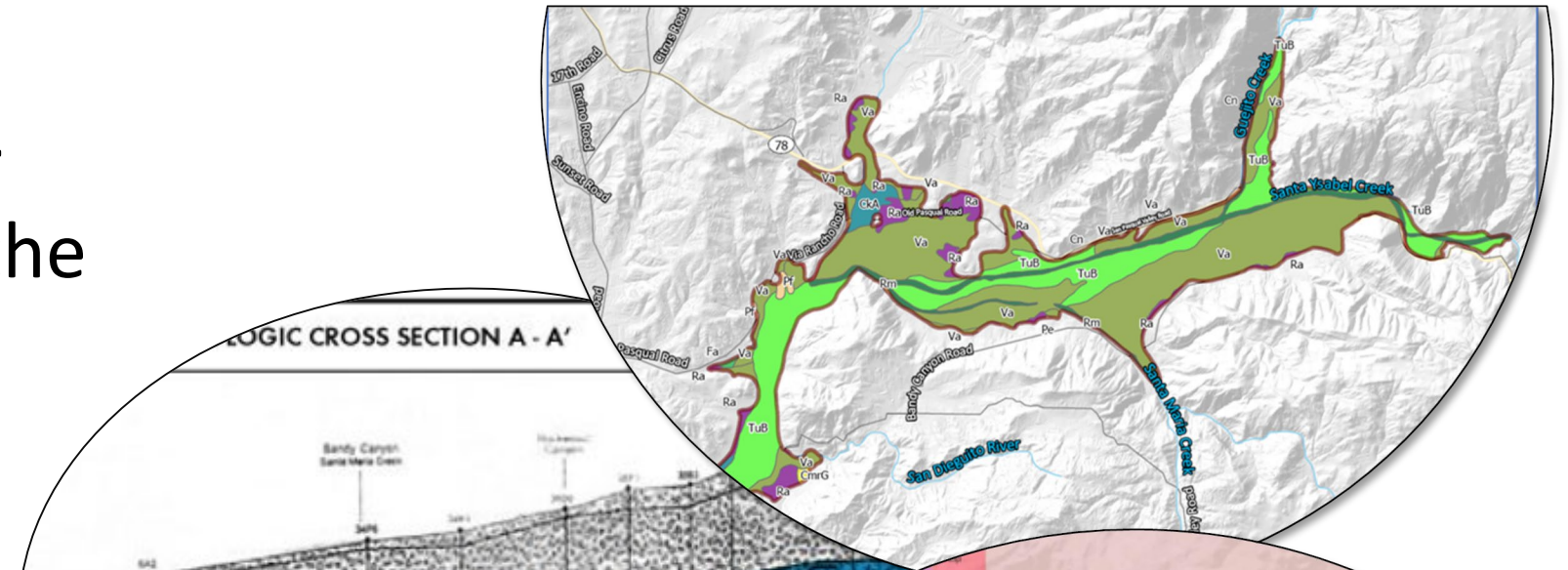
- 2016

- 2017

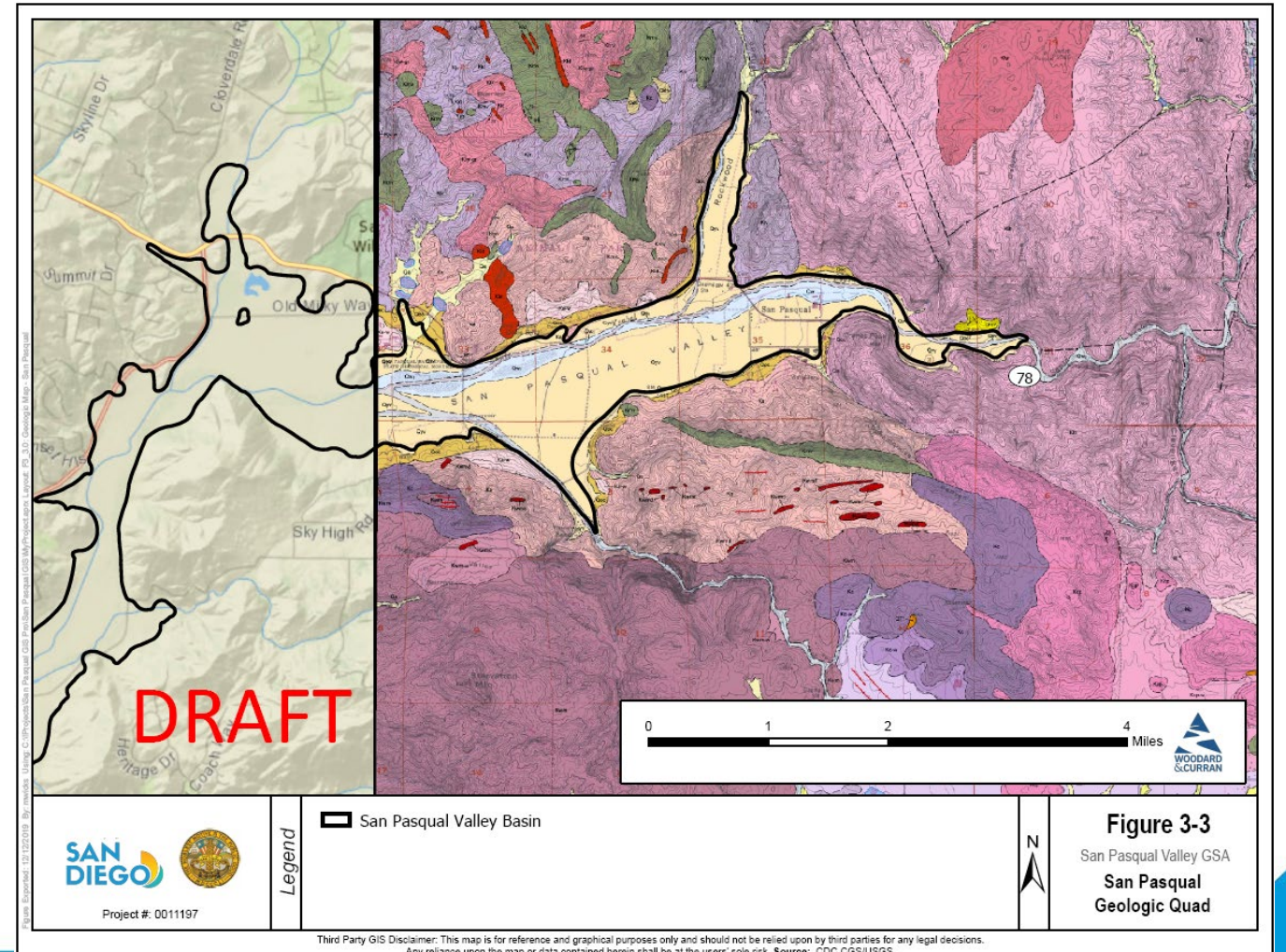
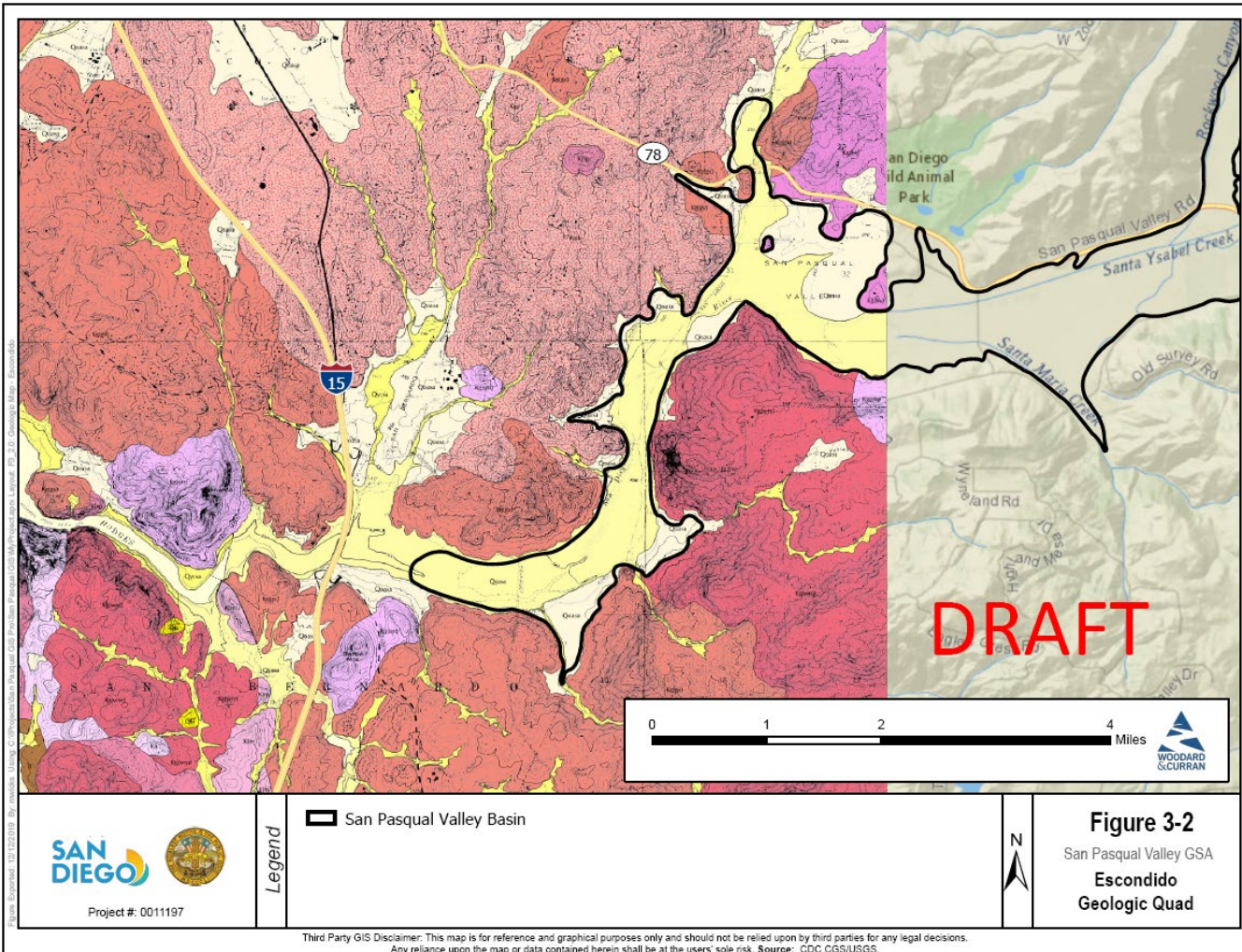


Hydrogeologic Conceptual Model

- Describes geology and aquifer characteristics and describes the materials that groundwater moves through
 - Geologic maps
 - Topography
 - Soils

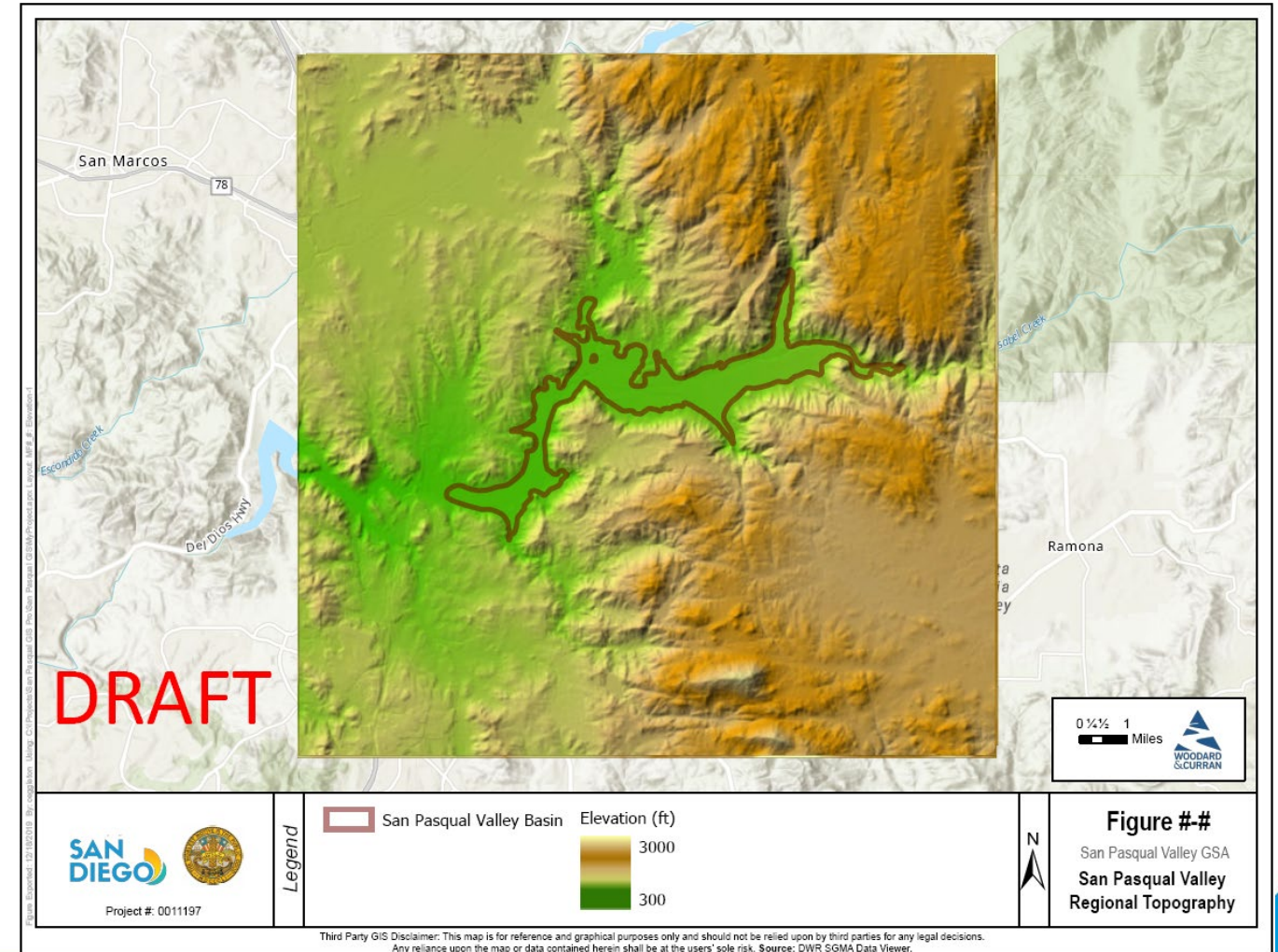
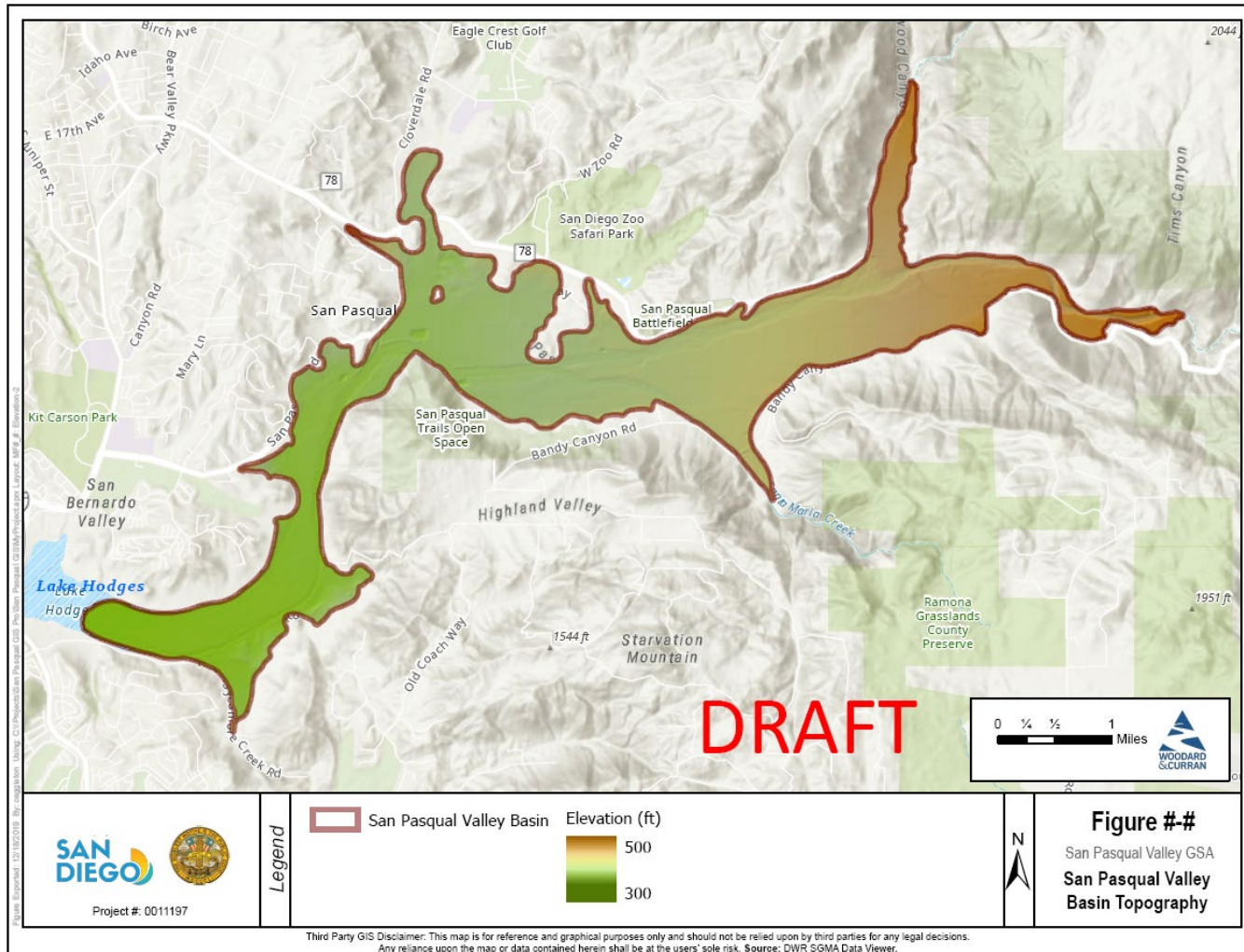


- Geologic Maps
 - Split in half; Two different authors



- Topography

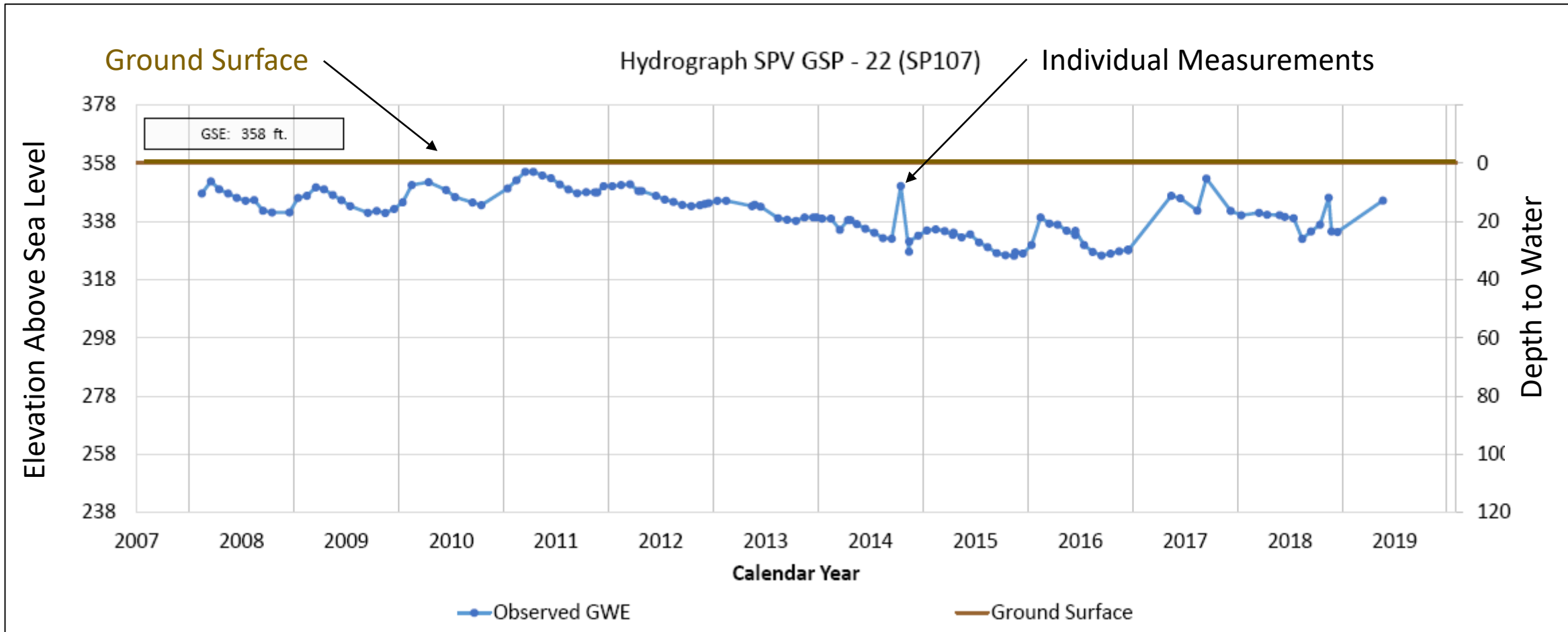
- Basin slopes 200 feet generally from east to west



- Describes where groundwater is, how it has changed over time, and groundwater quality
- Hydrographs (next slide)

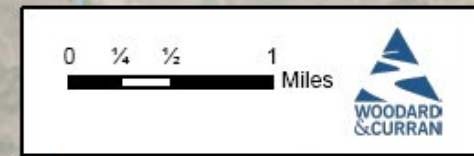
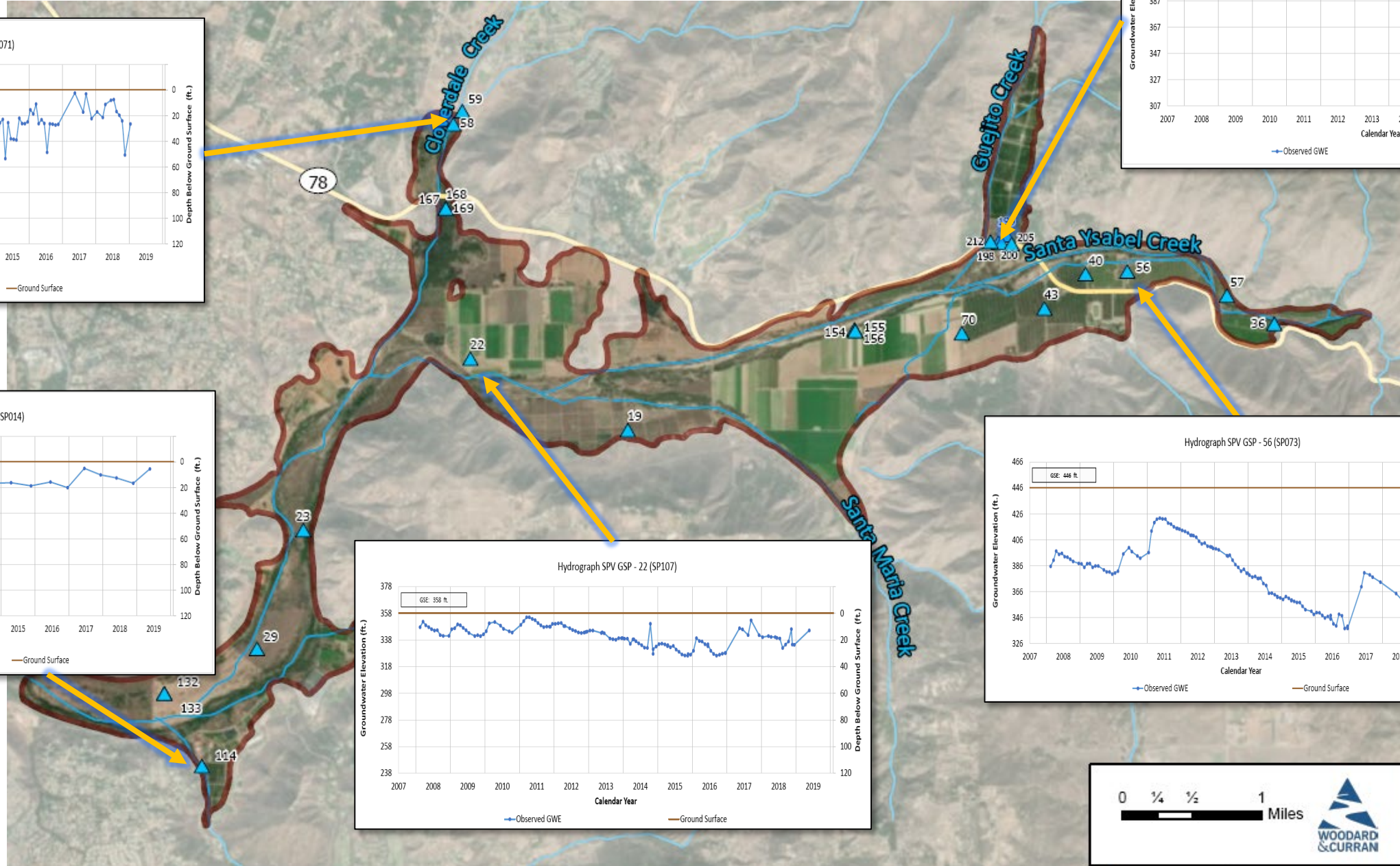
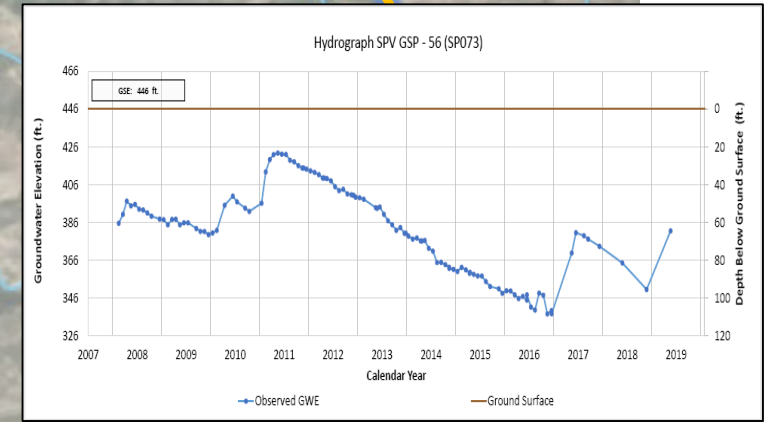
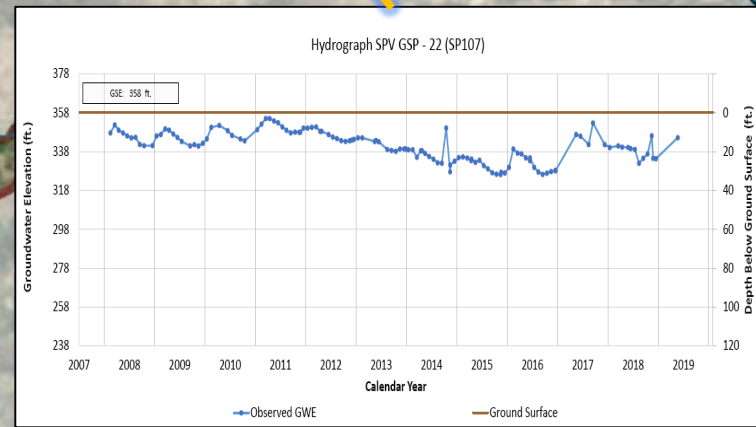
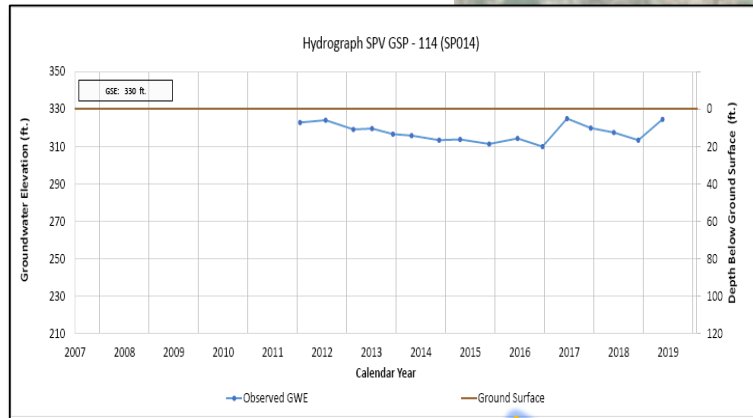
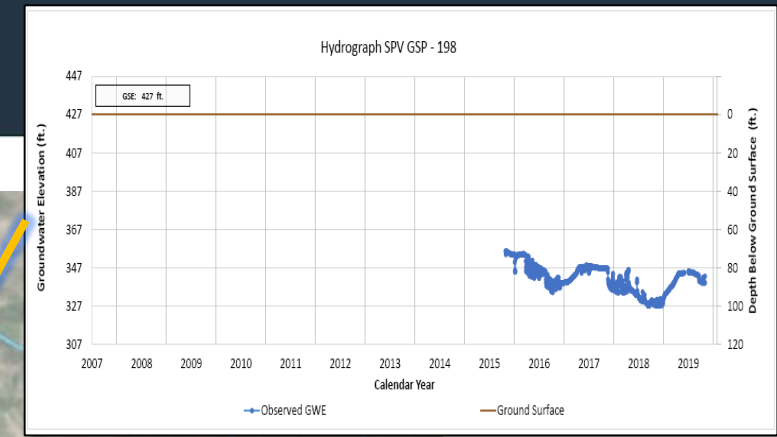
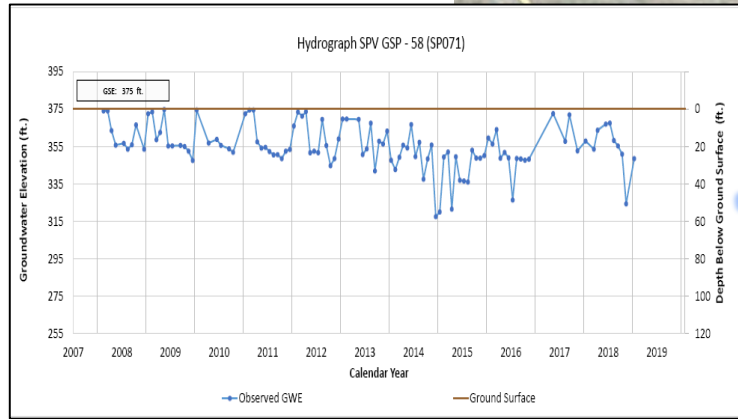


- Hydrographs





Groundwater Conditions



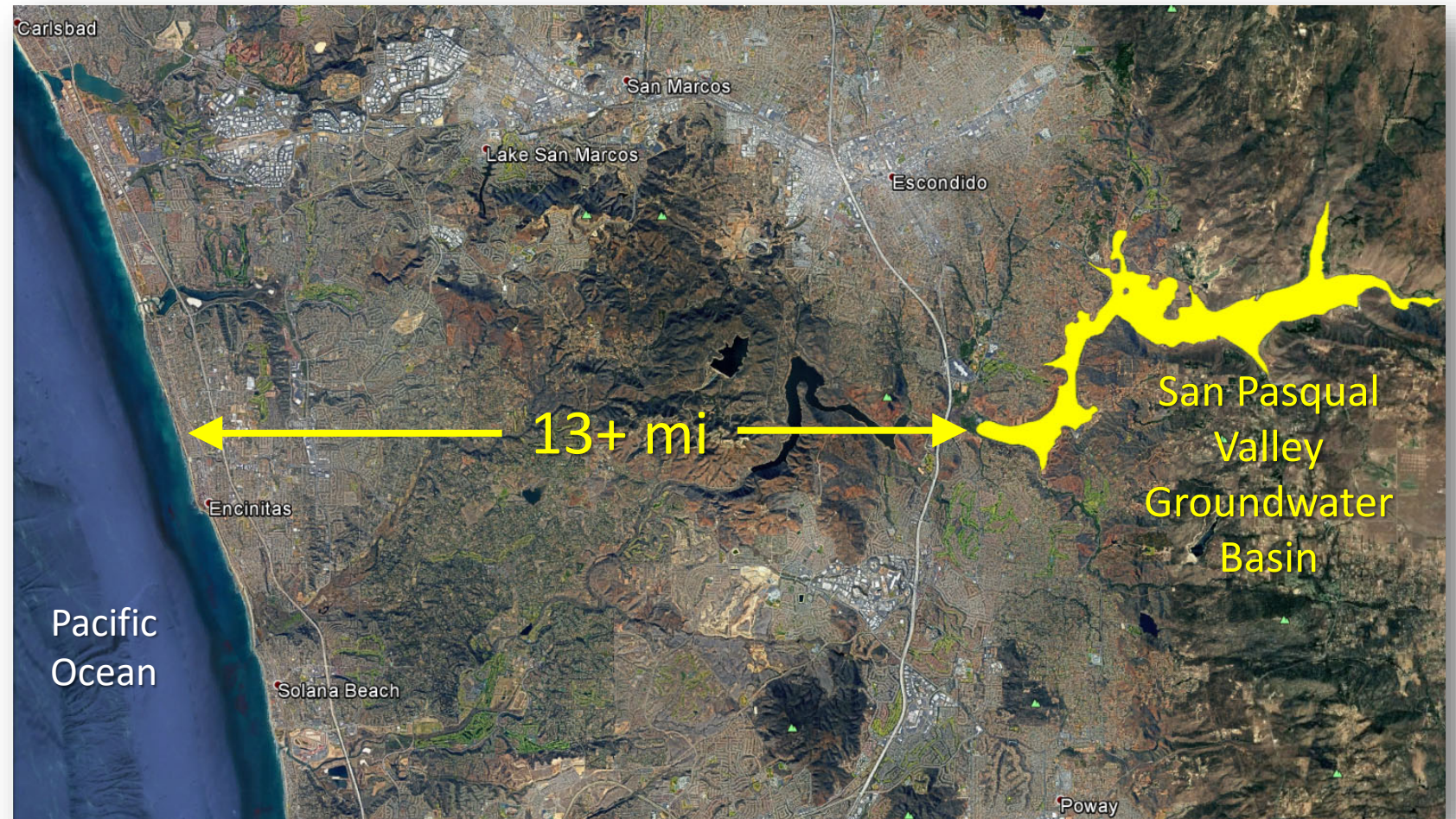
**San Pasqual Valley GSP
Advisory Committee Meeting**

UNDESIRABLE RESULTS



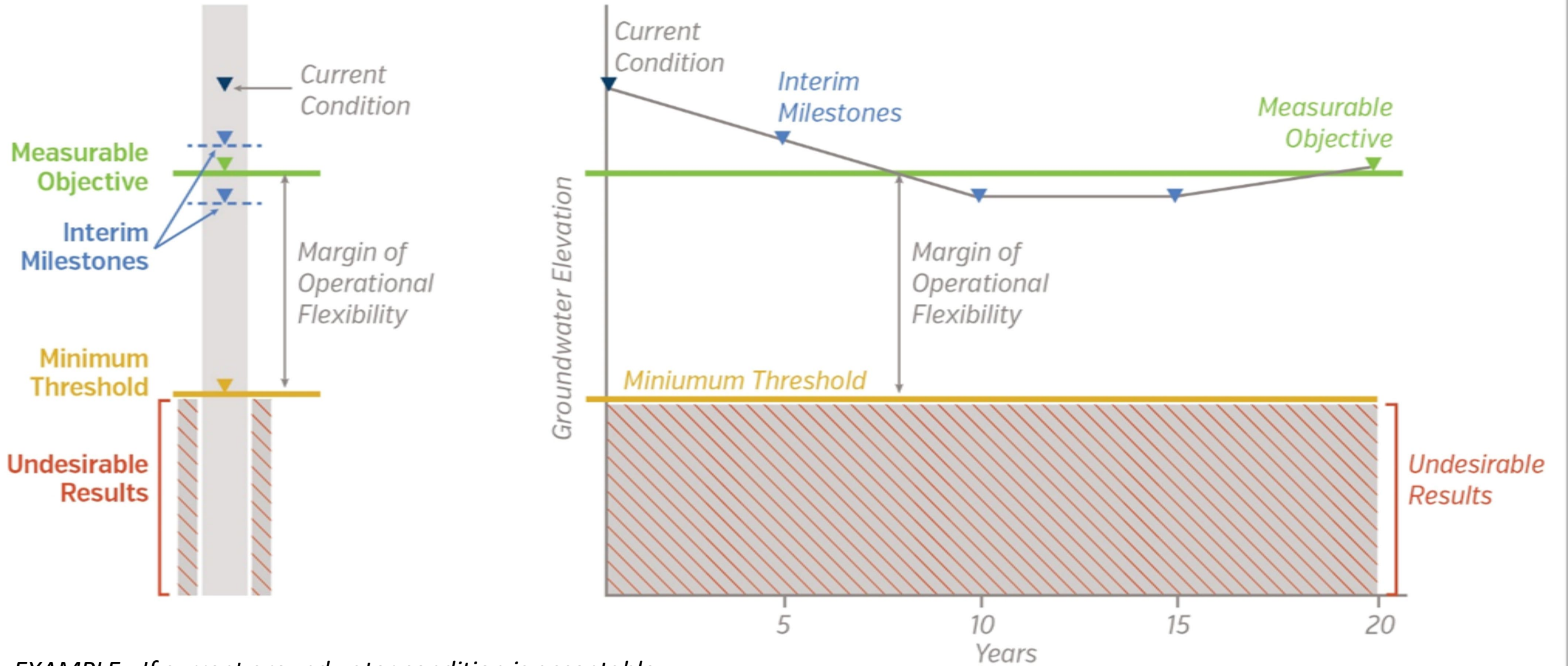
- Describes what we do not want to happen for each of the six sustainability indicators

- Chronic lowering of GW levels?
- Significant reduction of GW storage?
- ~~Seawater intrusion?~~
- Degraded water quality?
- ~~Land subsidence?~~
- Depletions of inter-connected SW and GW?



- Describes what we do not want to happen for each of the six sustainability indicators
- Considers stakeholder input
- Purpose is to avoid “significant and unreasonable effects...caused by groundwater conditions”
- Drives monitoring network, thresholds, projects and management actions sections of GSP

Undesirable Results



EXAMPLE - If current groundwater condition is acceptable

- Facilitated exercise:
 - Split into two groups
 - Discuss:
 - What do you want to happen with groundwater in the future?
 - What do you not want to happen with groundwater in the future?
 - 20 minutes
 - Rejoin groups – report input to everyone
- GSP team will compile results into a SGMA matrix and discuss at the next meeting

- What do you want to happen with groundwater in the future?
- What do you not want to happen with groundwater in the future?

San Pasqual Valley GSP Advisory Committee Meeting

PUBLIC COMMENT



**San Pasqual Valley GSP
Advisory Committee Meeting**

NEXT STEPS & CLOSING REMARKS





- Next AC Meeting:
 - Thursday April 9, 2020, 2-4pm
- Public Notices are at:
 - Online:
<https://www.sandiegocounty.gov/content/sdc/pds/SGMA/san-pasqual-valley.html>
 - Posted at:
 - San Diego County Farm Bureau, and
 - Escondido Public Library

- For additional information, please contact:
Sandra Carlson at (619) 533-4235
carlsons@san-diego.gov

Thank You!